



Full wwPDB X-ray Structure Validation Report ⓘ

May 26, 2020 – 11:54 pm BST

PDB ID : 1QJP
Title : HIGH RESOLUTION STRUCTURE OF THE OUTER MEMBRANE PROTEIN A (OMPA) TRANSMEMBRANE DOMAIN
Authors : Pautsch, A.; Schulz, G.E.
Deposited on : 1999-06-29
Resolution : 1.65 Å(reported)

This is a Full wwPDB X-ray Structure Validation Report for a publicly released PDB entry.

We welcome your comments at validation@mail.wwpdb.org

A user guide is available at

<https://www.wwpdb.org/validation/2017/XrayValidationReportHelp>

with specific help available everywhere you see the ⓘ symbol.

The following versions of software and data (see [references ⓘ](#)) were used in the production of this report:

MolProbity : 4.02b-467
Mogul : 1.8.5 (274361), CSD as541be (2020)
Xtriage (Phenix) : 1.13
EDS : 2.11
buster-report : 1.1.7 (2018)
Percentile statistics : 20191225.v01 (using entries in the PDB archive December 25th 2019)
Refmac : 5.8.0158
CCP4 : 7.0.044 (Gargrove)
Ideal geometry (proteins) : Engh & Huber (2001)
Ideal geometry (DNA, RNA) : Parkinson et al. (1996)
Validation Pipeline (wwPDB-VP) : 2.11

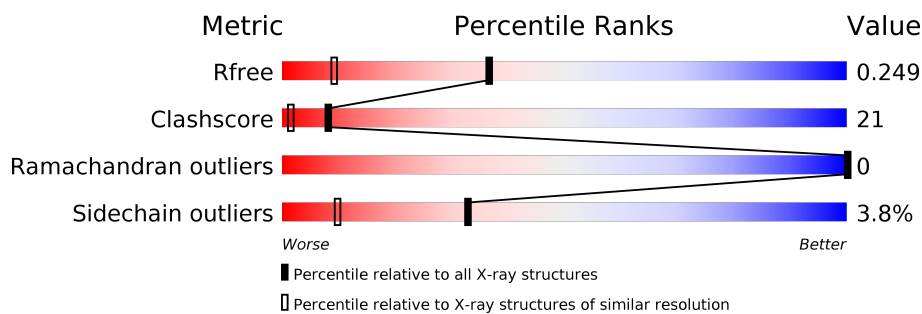
1 Overall quality at a glance

The following experimental techniques were used to determine the structure:

X-RAY DIFFRACTION

The reported resolution of this entry is 1.65 Å.

Percentile scores (ranging between 0-100) for global validation metrics of the entry are shown in the following graphic. The table shows the number of entries on which the scores are based.



Metric	Whole archive (#Entries)	Similar resolution (#Entries, resolution range(Å))
R_{free}	130704	1827 (1.66-1.66)
Clashscore	141614	1931 (1.66-1.66)
Ramachandran outliers	138981	1891 (1.66-1.66)
Sidechain outliers	138945	1891 (1.66-1.66)

The table below summarises the geometric issues observed across the polymeric chains and their fit to the electron density. The red, orange, yellow and green segments on the lower bar indicate the fraction of residues that contain outliers for ≥ 3 , 2, 1 and 0 types of geometric quality criteria respectively. A grey segment represents the fraction of residues that are not modelled. The numeric value for each fraction is indicated below the corresponding segment, with a dot representing fractions $\leq 5\%$

Mol	Chain	Length	Quality of chain
1	A	171	

The following table lists non-polymeric compounds, carbohydrate monomers and non-standard residues in protein, DNA, RNA chains that are outliers for geometric or electron-density-fit criteria:

Mol	Type	Chain	Res	Chirality	Geometry	Clashes	Electron density
2	C8E	A	1174	-	-	X	-

2 Entry composition [i](#)

There are 3 unique types of molecules in this entry. The entry contains 1291 atoms, of which 0 are hydrogens and 0 are deuteriums.

In the tables below, the ZeroOcc column contains the number of atoms modelled with zero occupancy, the AltConf column contains the number of residues with at least one atom in alternate conformation and the Trace column contains the number of residues modelled with at most 2 atoms.

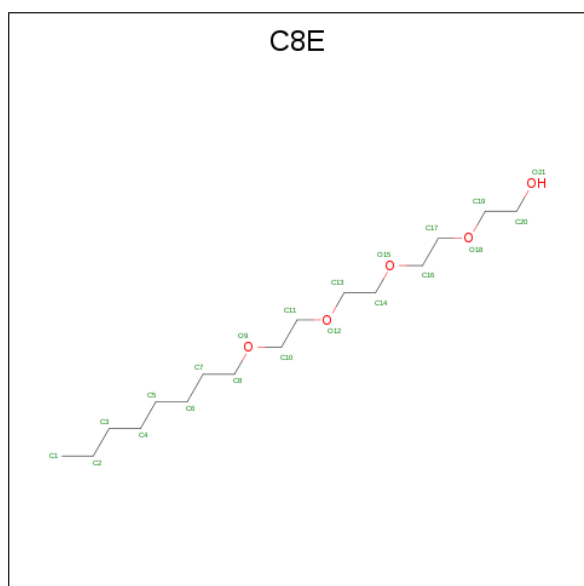
- Molecule 1 is a protein called OUTER MEMBRANE PROTEIN A.

Mol	Chain	Residues	Atoms					ZeroOcc	AltConf	Trace
1	A	137	Total	C	N	O	S	0	6	0
			1101	715	178	204	4			

There are 3 discrepancies between the modelled and reference sequences:

Chain	Residue	Modelled	Actual	Comment	Reference
A	23	PHE	LEU	engineered mutation	UNP P02934
A	34	LYS	GLN	engineered mutation	UNP P02934
A	107	TYR	LYS	engineered mutation	UNP P02934

- Molecule 2 is (HYDROXYETHYLOXY)TRI(ETHYLOXY)OCTANE (three-letter code: C8E) (formula: C₁₆H₃₄O₅).



Mol	Chain	Residues	Atoms			ZeroOcc	AltConf
2	A	1	Total	C	O	0	0
			21	16	5		

Continued on next page...

Continued from previous page...

Mol	Chain	Residues	Atoms			ZeroOcc	AltConf
2	A	1	Total	C	O	0	0
			21	16	5		
2	A	1	Total	C	O	5	0
			21	16	5		
2	A	1	Total	C	O	6	0
			21	16	5		
2	A	1	Total	C	O	0	0
			21	16	5		
2	A	1	Total	C	O	2	0
			21	16	5		

- Molecule 3 is water.

Mol	Chain	Residues	Atoms		ZeroOcc	AltConf
3	A	64	Total	O	0	0
			64	64		

3 Residue-property plots [i](#)

These plots are drawn for all protein, RNA and DNA chains in the entry. The first graphic for a chain summarises the proportions of the various outlier classes displayed in the second graphic. The second graphic shows the sequence view annotated by issues in geometry. Residues are color-coded according to the number of geometric quality criteria for which they contain at least one outlier: green = 0, yellow = 1, orange = 2 and red = 3 or more. Stretches of 2 or more consecutive residues without any outlier are shown as a green connector. Residues present in the sample, but not in the model, are shown in grey.

• Molecule 1: OUTER MEMBRANE PROTEIN A



4 Data and refinement statistics

Property	Value	Source
Space group	C 1 2 1	Depositor
Cell constants a, b, c, α , β , γ	65.10Å 79.70Å 50.20Å 90.00° 94.30° 90.00°	Depositor
Resolution (Å)	12.00 – 1.65 31.18 – 1.65	Depositor EDS
% Data completeness (in resolution range)	95.4 (12.00-1.65) 95.1 (31.18-1.65)	Depositor EDS
R_{merge}	(Not available)	Depositor
R_{sym}	0.06	Depositor
$\langle I/\sigma(I) \rangle$ ¹	3.36 (at 1.65Å)	Xtriage
Refinement program	REFMAC	Depositor
R, R_{free}	0.155 , 0.198 0.219 , 0.249	Depositor DCC
R_{free} test set	1479 reflections (5.06%)	wwPDB-VP
Wilson B-factor (Å ²)	25.4	Xtriage
Anisotropy	0.344	Xtriage
Bulk solvent k_{sol} (e/Å ³), B_{sol} (Å ²)	0.29 , 83.9	EDS
L-test for twinning ²	$\langle L \rangle = 0.50$, $\langle L^2 \rangle = 0.33$	Xtriage
Estimated twinning fraction	No twinning to report.	Xtriage
F_o, F_c correlation	0.95	EDS
Total number of atoms	1291	wwPDB-VP
Average B, all atoms (Å ²)	44.0	wwPDB-VP

Xtriage's analysis on translational NCS is as follows: *The largest off-origin peak in the Patterson function is 10.56% of the height of the origin peak. No significant pseudotranslation is detected.*

¹Intensities estimated from amplitudes.

²Theoretical values of $\langle |L| \rangle$, $\langle L^2 \rangle$ for acentric reflections are 0.5, 0.333 respectively for untwinned datasets, and 0.375, 0.2 for perfectly twinned datasets.

5 Model quality ⓘ

5.1 Standard geometry ⓘ

Bond lengths and bond angles in the following residue types are not validated in this section: C8E

The Z score for a bond length (or angle) is the number of standard deviations the observed value is removed from the expected value. A bond length (or angle) with $|Z| > 5$ is considered an outlier worth inspection. RMSZ is the root-mean-square of all Z scores of the bond lengths (or angles).

Mol	Chain	Bond lengths		Bond angles	
		RMSZ	# Z >5	RMSZ	# Z >5
1	A	0.56	0/1165	1.56	17/1582 (1.1%)

There are no bond length outliers.

All (17) bond angle outliers are listed below:

Mol	Chain	Res	Type	Atoms	Z	Observed(°)	Ideal(°)
1	A	90	ASP	CB-CG-OD2	-7.40	111.64	118.30
1	A	85[A]	TYR	CB-CG-CD2	-7.31	116.61	121.00
1	A	85[B]	TYR	CB-CG-CD2	-7.31	116.61	121.00
1	A	60	ARG	NE-CZ-NH2	-7.06	116.77	120.30
1	A	96	ARG	NE-CZ-NH2	-6.46	117.07	120.30
1	A	139	LEU	CA-CB-CG	6.42	130.07	115.30
1	A	89	ASP	CB-CG-OD2	-6.35	112.59	118.30
1	A	91	LEU	CA-CB-CG	6.19	129.53	115.30
1	A	48	TYR	CB-CG-CD1	-5.97	117.42	121.00
1	A	111	TYR	CB-CG-CD1	5.96	124.58	121.00
1	A	92	ASP	CA-CB-CG	5.77	126.10	113.40
1	A	71	ALA	N-CA-CB	5.72	118.10	110.10
1	A	116	ASP	CB-CG-OD1	5.19	122.97	118.30
1	A	72	TYR	N-CA-CB	5.17	119.91	110.60
1	A	94	TYR	CB-CG-CD1	5.15	124.09	121.00
1	A	8	TYR	CG-CD1-CE1	5.07	125.36	121.30
1	A	8	TYR	CB-CG-CD2	5.06	124.03	121.00

There are no chirality outliers.

There are no planarity outliers.

5.2 Too-close contacts ⓘ

In the following table, the Non-H and H(model) columns list the number of non-hydrogen atoms and hydrogen atoms in the chain respectively. The H(added) column lists the number of hydrogen atoms added and optimized by MolProbity. The Clashes column lists the number of clashes within the asymmetric unit, whereas Symm-Clashes lists symmetry related clashes.

Mol	Chain	Non-H	H(model)	H(added)	Clashes	Symm-Clashes
1	A	1101	0	1040	52	0
2	A	126	0	200	24	0
3	A	64	0	0	5	0
All	All	1291	0	1240	52	0

The all-atom clashscore is defined as the number of clashes found per 1000 atoms (including hydrogen atoms). The all-atom clashscore for this structure is 21.

All (52) close contacts within the same asymmetric unit are listed below, sorted by their clash magnitude.

Atom-1	Atom-2	Interatomic distance (Å)	Clash overlap (Å)
1:A:93[A]:ILE:CD1	1:A:127[A]:VAL:HG12	1.76	1.15
1:A:93[B]:ILE:HD12	2:A:1174:C8E:H21	1.26	1.13
1:A:93[A]:ILE:HD13	1:A:127[A]:VAL:HG12	1.09	1.06
1:A:35:LEU:HB2	1:A:61:MET:HE2	1.38	1.03
1:A:93[B]:ILE:CD1	2:A:1174:C8E:H21	1.90	1.01
1:A:93[A]:ILE:HD13	1:A:127[A]:VAL:CG1	1.89	1.01
1:A:93[A]:ILE:CD1	1:A:127[A]:VAL:CG1	2.40	0.98
1:A:93[B]:ILE:CD1	2:A:1174:C8E:C1	2.46	0.94
1:A:93[B]:ILE:HD12	2:A:1174:C8E:C2	1.99	0.92
1:A:35:LEU:HB2	1:A:61:MET:CE	2.05	0.86
1:A:93[B]:ILE:CD1	2:A:1174:C8E:C2	2.54	0.85
1:A:101:VAL:HG13	2:A:1175:C8E:H32	1.57	0.85
1:A:139:LEU:HD21	2:A:1173:C8E:H62	1.61	0.80
1:A:1:ALA:N	3:A:2001:HOH:O	2.22	0.73
1:A:60:ARG:NH2	1:A:72:TYR:CD1	2.56	0.73
1:A:93[B]:ILE:HD13	2:A:1174:C8E:C1	2.22	0.67
1:A:17:GLN:HE22	2:A:1173:C8E:H202	1.59	0.67
1:A:93[B]:ILE:CD1	2:A:1174:C8E:H11	2.22	0.67
1:A:5:ASN:HB2	3:A:2010:HOH:O	1.94	0.66
1:A:93[B]:ILE:HD13	2:A:1174:C8E:H12	1.78	0.65
1:A:84:GLY:HA3	3:A:2043:HOH:O	2.00	0.62
1:A:93[A]:ILE:HG22	2:A:1174:C8E:H21	1.83	0.60
1:A:93[A]:ILE:HD11	1:A:127[A]:VAL:CG1	2.29	0.60
1:A:101:VAL:HG12	1:A:119:VAL:HG22	1.83	0.59

Continued on next page...

Continued from previous page...

Atom-1	Atom-2	Interatomic distance (Å)	Clash overlap (Å)
1:A:60:ARG:NH2	1:A:72:TYR:CE1	2.71	0.59
1:A:93[B]:ILE:HD11	2:A:1174:C8E:H11	1.85	0.58
1:A:95[A]:THR:OG1	2:A:1174:C8E:H13	2.03	0.58
1:A:91:LEU:HD22	1:A:127[B]:VAL:CG1	2.34	0.57
1:A:101:VAL:CG1	2:A:1175:C8E:H32	2.34	0.56
1:A:93[B]:ILE:HD13	2:A:1174:C8E:C2	2.36	0.55
1:A:94:TYR:HB3	3:A:2043:HOH:O	2.09	0.52
1:A:91:LEU:HD22	1:A:127[B]:VAL:HG12	1.92	0.51
1:A:83:LEU:HD12	1:A:83:LEU:N	2.26	0.51
1:A:77:VAL:HG21	2:A:1175:C8E:H141	1.92	0.51
1:A:87:ILE:HG12	1:A:93[A]:ILE:HG12	1.93	0.50
1:A:91:LEU:CD2	1:A:127[B]:VAL:CG1	2.89	0.49
1:A:93[A]:ILE:HD11	1:A:127[A]:VAL:HG12	1.81	0.47
1:A:92:ASP:HB3	3:A:2043:HOH:O	2.14	0.47
1:A:93[B]:ILE:HG23	2:A:1174:C8E:H21	1.96	0.47
1:A:93[A]:ILE:CD1	1:A:127[A]:VAL:HG13	2.40	0.46
1:A:60:ARG:NH2	1:A:72:TYR:CG	2.84	0.46
1:A:17:GLN:HE22	2:A:1173:C8E:C20	2.29	0.45
1:A:95[A]:THR:HG21	2:A:1177:C8E:C6	2.48	0.44
1:A:71:ALA:HB3	1:A:107:TYR:HD2	1.82	0.44
1:A:51:PHE:CG	2:A:1172:C8E:H51	2.53	0.43
1:A:60:ARG:CZ	1:A:72:TYR:CG	3.02	0.43
1:A:91:LEU:CD2	1:A:127[B]:VAL:HG12	2.47	0.43
1:A:87:ILE:CG1	1:A:93[A]:ILE:HG12	2.49	0.42
1:A:93[B]:ILE:HD13	2:A:1174:C8E:H21	1.86	0.42
1:A:60:ARG:NH1	1:A:72:TYR:CD2	2.89	0.41
1:A:139:LEU:CD2	2:A:1173:C8E:H62	2.43	0.41
1:A:143:TRP:HE1	2:A:1177:C8E:H131	1.86	0.41

There are no symmetry-related clashes.

5.3 Torsion angles [i](#)

5.3.1 Protein backbone [i](#)

In the following table, the Percentiles column shows the percent Ramachandran outliers of the chain as a percentile score with respect to all X-ray entries followed by that with respect to entries of similar resolution.

The Analysed column shows the number of residues for which the backbone conformation was analysed, and the total number of residues.

Mol	Chain	Analysed	Favoured	Allowed	Outliers	Percentiles	
1	A	135/171 (79%)	134 (99%)	1 (1%)	0	100	100

There are no Ramachandran outliers to report.

5.3.2 Protein sidechains ⓘ

In the following table, the Percentiles column shows the percent sidechain outliers of the chain as a percentile score with respect to all X-ray entries followed by that with respect to entries of similar resolution.

The Analysed column shows the number of residues for which the sidechain conformation was analysed, and the total number of residues.

Mol	Chain	Analysed	Rotameric	Outliers	Percentiles	
1	A	112/133 (84%)	108 (96%)	4 (4%)	35	11

All (4) residues with a non-rotameric sidechain are listed below:

Mol	Chain	Res	Type
1	A	91	LEU
1	A	107	TYR
1	A	139	LEU
1	A	145	ASN

Some sidechains can be flipped to improve hydrogen bonding and reduce clashes. All (1) such sidechains are listed below:

Mol	Chain	Res	Type
1	A	17	GLN

5.3.3 RNA ⓘ

There are no RNA molecules in this entry.

5.4 Non-standard residues in protein, DNA, RNA chains ⓘ

There are no non-standard protein/DNA/RNA residues in this entry.

5.5 Carbohydrates [i](#)

There are no carbohydrates in this entry.

5.6 Ligand geometry [i](#)

6 ligands are modelled in this entry.

In the following table, the Counts columns list the number of bonds (or angles) for which Mogul statistics could be retrieved, the number of bonds (or angles) that are observed in the model and the number of bonds (or angles) that are defined in the Chemical Component Dictionary. The Link column lists molecule types, if any, to which the group is linked. The Z score for a bond length (or angle) is the number of standard deviations the observed value is removed from the expected value. A bond length (or angle) with $|Z| > 2$ is considered an outlier worth inspection. RMSZ is the root-mean-square of all Z scores of the bond lengths (or angles).

Mol	Type	Chain	Res	Link	Bond lengths			Bond angles		
					Counts	RMSZ	# Z > 2	Counts	RMSZ	# Z > 2
2	C8E	A	1173	-	20,20,20	0.84	0	19,19,19	1.70	5 (26%)
2	C8E	A	1177	-	20,20,20	2.31	1 (5%)	19,19,19	1.66	3 (15%)
2	C8E	A	1174	-	20,20,20	1.69	1 (5%)	19,19,19	3.05	8 (42%)
2	C8E	A	1175	-	20,20,20	0.90	0	19,19,19	1.98	7 (36%)
2	C8E	A	1172	-	20,20,20	0.86	0	19,19,19	2.02	6 (31%)
2	C8E	A	1176	-	20,20,20	0.84	0	19,19,19	1.97	6 (31%)

In the following table, the Chirals column lists the number of chiral outliers, the number of chiral centers analysed, the number of these observed in the model and the number defined in the Chemical Component Dictionary. Similar counts are reported in the Torsion and Rings columns. '-' means no outliers of that kind were identified.

Mol	Type	Chain	Res	Link	Chirals	Torsions	Rings
2	C8E	A	1173	-	-	11/18/18/18	-
2	C8E	A	1177	-	-	12/18/18/18	-
2	C8E	A	1174	-	-	12/18/18/18	-
2	C8E	A	1175	-	-	13/18/18/18	-
2	C8E	A	1172	-	-	10/18/18/18	-
2	C8E	A	1176	-	-	11/18/18/18	-

All (2) bond length outliers are listed below:

Mol	Chain	Res	Type	Atoms	Z	Observed(Å)	Ideal(Å)
2	A	1177	C8E	C19-C20	9.75	2.01	1.49

Continued on next page...

Continued from previous page...

Mol	Chain	Res	Type	Atoms	Z	Observed(Å)	Ideal(Å)
2	A	1174	C8E	C17-C16	-6.61	1.14	1.49

All (35) bond angle outliers are listed below:

Mol	Chain	Res	Type	Atoms	Z	Observed(°)	Ideal(°)
2	A	1174	C8E	O15-C16-C17	7.97	146.34	110.39
2	A	1174	C8E	O18-C17-C16	6.43	139.38	110.39
2	A	1174	C8E	O15-C14-C13	5.44	134.92	110.39
2	A	1175	C8E	O15-C14-C13	4.70	131.59	110.39
2	A	1172	C8E	O15-C14-C13	4.59	131.09	110.39
2	A	1176	C8E	O15-C14-C13	4.33	129.90	110.39
2	A	1177	C8E	O15-C14-C13	4.19	129.27	110.39
2	A	1173	C8E	O15-C14-C13	4.07	128.76	110.39
2	A	1172	C8E	O12-C13-C14	3.43	125.86	110.39
2	A	1174	C8E	O18-C19-C20	3.40	124.99	110.07
2	A	1175	C8E	O18-C17-C16	3.38	125.62	110.39
2	A	1176	C8E	O18-C19-C20	3.20	124.12	110.07
2	A	1176	C8E	O12-C13-C14	3.18	124.71	110.39
2	A	1172	C8E	O18-C19-C20	3.08	123.59	110.07
2	A	1177	C8E	O18-C17-C16	3.06	124.19	110.39
2	A	1175	C8E	C7-C6-C5	-3.05	98.92	114.42
2	A	1172	C8E	O9-C8-C7	3.04	126.26	110.26
2	A	1176	C8E	O18-C17-C16	3.02	124.00	110.39
2	A	1174	C8E	O12-C13-C14	2.98	123.81	110.39
2	A	1175	C8E	O18-C19-C20	2.94	122.99	110.07
2	A	1172	C8E	C7-C6-C5	-2.93	99.55	114.42
2	A	1173	C8E	O18-C17-C16	2.87	123.32	110.39
2	A	1172	C8E	O18-C17-C16	2.79	122.95	110.39
2	A	1174	C8E	C5-C4-C3	-2.73	100.57	114.42
2	A	1173	C8E	C7-C6-C5	-2.57	101.38	114.42
2	A	1173	C8E	O18-C19-C20	2.42	120.71	110.07
2	A	1175	C8E	C5-C4-C3	-2.36	102.44	114.42
2	A	1176	C8E	C5-C4-C3	-2.36	102.45	114.42
2	A	1174	C8E	O9-C8-C7	2.33	122.52	110.26
2	A	1173	C8E	O12-C13-C14	2.31	120.80	110.39
2	A	1175	C8E	O12-C13-C14	2.28	120.70	110.39
2	A	1176	C8E	C7-C6-C5	-2.27	102.91	114.42
2	A	1177	C8E	C7-C6-C5	-2.26	102.95	114.42
2	A	1174	C8E	C7-C6-C5	-2.11	103.73	114.42
2	A	1175	C8E	O9-C8-C7	2.06	121.07	110.26

There are no chirality outliers.

All (69) torsion outliers are listed below:

Mol	Chain	Res	Type	Atoms
2	A	1176	C8E	O12-C13-C14-O15
2	A	1175	C8E	O12-C13-C14-O15
2	A	1173	C8E	O12-C13-C14-O15
2	A	1176	C8E	O15-C16-C17-O18
2	A	1172	C8E	O15-C16-C17-O18
2	A	1174	C8E	O12-C13-C14-O15
2	A	1173	C8E	C6-C7-C8-O9
2	A	1172	C8E	C6-C7-C8-O9
2	A	1174	C8E	C6-C7-C8-O9
2	A	1174	C8E	C16-C17-O18-C19
2	A	1174	C8E	O15-C16-C17-O18
2	A	1177	C8E	O12-C13-C14-O15
2	A	1175	C8E	C6-C7-C8-O9
2	A	1172	C8E	O12-C13-C14-O15
2	A	1172	C8E	C2-C3-C4-C5
2	A	1173	C8E	C3-C4-C5-C6
2	A	1177	C8E	C3-C4-C5-C6
2	A	1176	C8E	C2-C3-C4-C5
2	A	1174	C8E	C3-C4-C5-C6
2	A	1176	C8E	C4-C5-C6-C7
2	A	1173	C8E	C4-C5-C6-C7
2	A	1173	C8E	O15-C16-C17-O18
2	A	1177	C8E	C2-C3-C4-C5
2	A	1172	C8E	C3-C4-C5-C6
2	A	1175	C8E	C3-C4-C5-C6
2	A	1174	C8E	C5-C6-C7-C8
2	A	1175	C8E	C2-C3-C4-C5
2	A	1177	C8E	C4-C5-C6-C7
2	A	1175	C8E	O15-C16-C17-O18
2	A	1174	C8E	C1-C2-C3-C4
2	A	1176	C8E	C1-C2-C3-C4
2	A	1172	C8E	C7-C8-O9-C10
2	A	1173	C8E	C5-C6-C7-C8
2	A	1174	C8E	C4-C5-C6-C7
2	A	1177	C8E	C16-C17-O18-C19
2	A	1177	C8E	O15-C16-C17-O18
2	A	1177	C8E	C5-C6-C7-C8
2	A	1177	C8E	C1-C2-C3-C4
2	A	1175	C8E	C14-C13-O12-C11
2	A	1177	C8E	C14-C13-O12-C11
2	A	1174	C8E	C14-C13-O12-C11
2	A	1174	C8E	C10-C11-O12-C13

Continued on next page...

Continued from previous page...

Mol	Chain	Res	Type	Atoms
2	A	1172	C8E	C20-C19-O18-C17
2	A	1175	C8E	C20-C19-O18-C17
2	A	1173	C8E	C2-C3-C4-C5
2	A	1177	C8E	C10-C11-O12-C13
2	A	1172	C8E	C14-C13-O12-C11
2	A	1176	C8E	C20-C19-O18-C17
2	A	1175	C8E	C16-C17-O18-C19
2	A	1176	C8E	C13-C14-O15-C16
2	A	1176	C8E	C5-C6-C7-C8
2	A	1175	C8E	C4-C5-C6-C7
2	A	1174	C8E	C20-C19-O18-C17
2	A	1172	C8E	C10-C11-O12-C13
2	A	1176	C8E	C6-C7-C8-O9
2	A	1174	C8E	C7-C8-O9-C10
2	A	1175	C8E	C1-C2-C3-C4
2	A	1175	C8E	C10-C11-O12-C13
2	A	1177	C8E	C20-C19-O18-C17
2	A	1177	C8E	C13-C14-O15-C16
2	A	1176	C8E	C11-C10-O9-C8
2	A	1172	C8E	O18-C19-C20-O21
2	A	1175	C8E	C7-C8-O9-C10
2	A	1176	C8E	C16-C17-O18-C19
2	A	1173	C8E	C10-C11-O12-C13
2	A	1175	C8E	C13-C14-O15-C16
2	A	1173	C8E	C20-C19-O18-C17
2	A	1173	C8E	C16-C17-O18-C19
2	A	1173	C8E	C13-C14-O15-C16

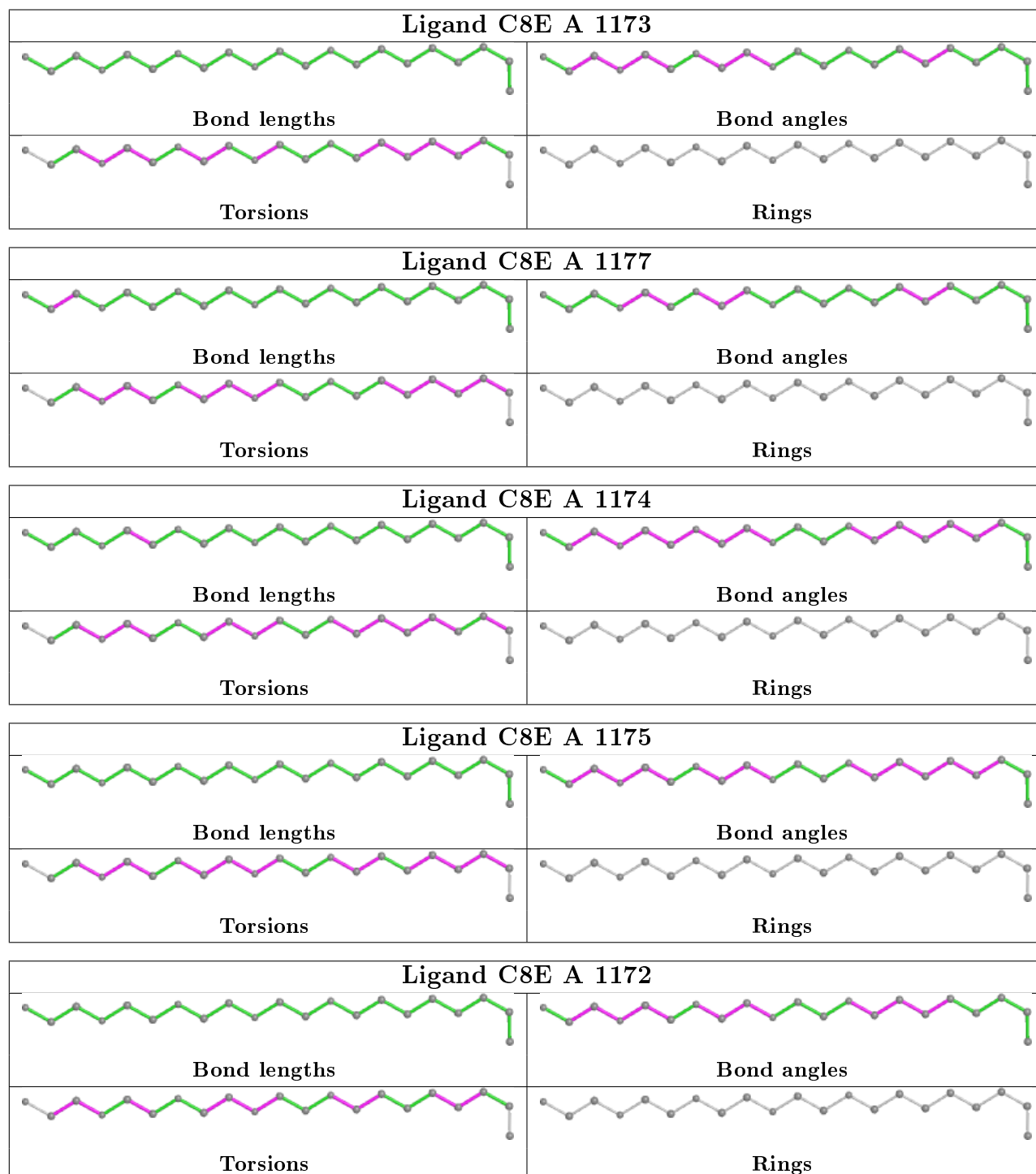
There are no ring outliers.

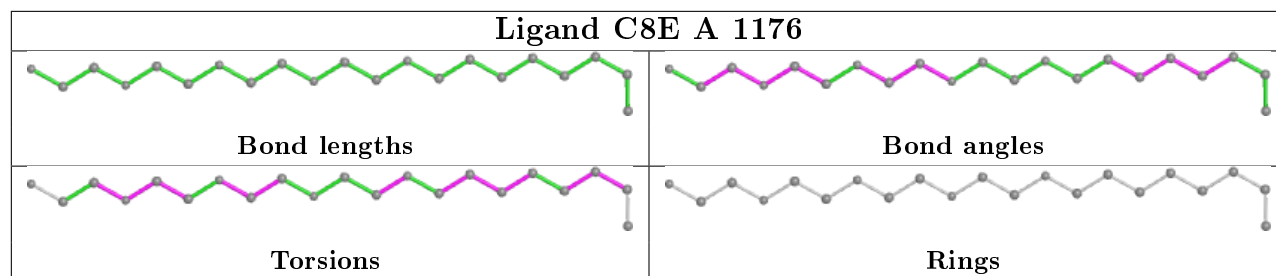
5 monomers are involved in 24 short contacts:

Mol	Chain	Res	Type	Clashes	Symm-Clashes
2	A	1173	C8E	4	0
2	A	1177	C8E	2	0
2	A	1174	C8E	14	0
2	A	1175	C8E	3	0
2	A	1172	C8E	1	0

The following is a two-dimensional graphical depiction of Mogul quality analysis of bond lengths, bond angles, torsion angles, and ring geometry for all instances of the Ligand of Interest. In addition, ligands with molecular weight > 250 and outliers as shown on the validation Tables will also be included. For torsion angles, if less than 5% of the Mogul distribution of torsion angles is

within 10 degrees of the torsion angle in question, then that torsion angle is considered an outlier. Any bond that is central to one or more torsion angles identified as an outlier by Mogul will be highlighted in the graph. For rings, the root-mean-square deviation (RMSD) between the ring in question and similar rings identified by Mogul is calculated over all ring torsion angles. If the average RMSD is greater than 60 degrees and the minimal RMSD between the ring in question and any Mogul-identified rings is also greater than 60 degrees, then that ring is considered an outlier. The outliers are highlighted in purple. The color gray indicates Mogul did not find sufficient equivalents in the CSD to analyse the geometry.





5.7 Other polymers [i](#)

There are no such residues in this entry.

5.8 Polymer linkage issues [i](#)

There are no chain breaks in this entry.

6 Fit of model and data

6.1 Protein, DNA and RNA chains

Unable to reproduce the depositors R factor - this section is therefore empty.

6.2 Non-standard residues in protein, DNA, RNA chains

Unable to reproduce the depositors R factor - this section is therefore empty.

6.3 Carbohydrates

Unable to reproduce the depositors R factor - this section is therefore empty.

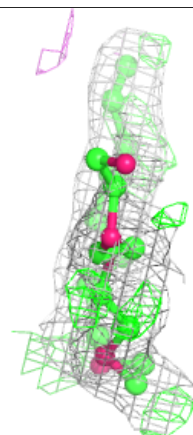
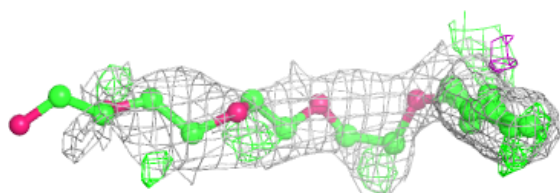
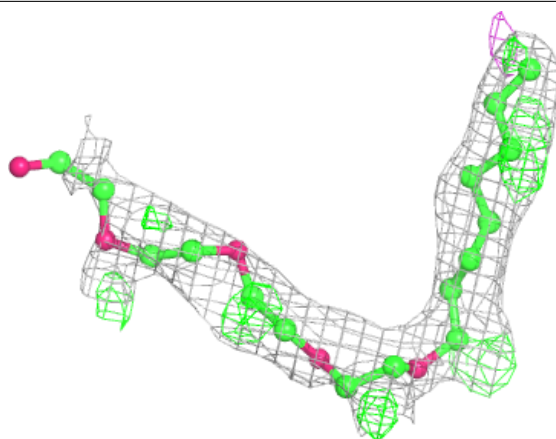
6.4 Ligands

Unable to reproduce the depositors R factor - this section is therefore empty.

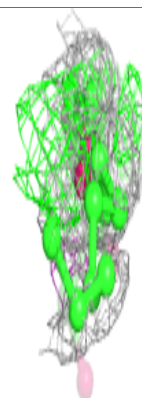
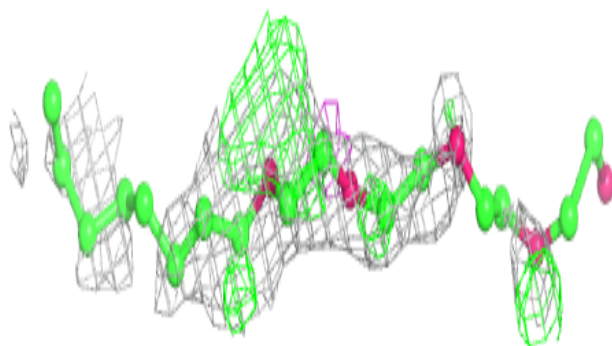
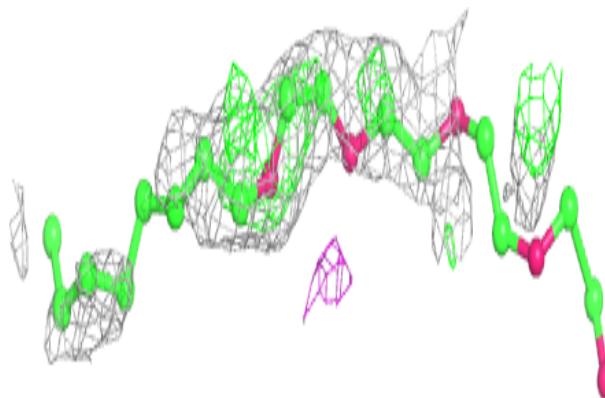
The following is a graphical depiction of the model fit to experimental electron density of all instances of the Ligand of Interest. In addition, ligands with molecular weight > 250 and outliers as shown on the geometry validation Tables will also be included. Each fit is shown from different orientation to approximate a three-dimensional view.

Electron density around C8E A 1173:

$2mF_o-DF_c$ (at 0.7 rmsd) in gray
 mF_o-DF_c (at 3 rmsd) in purple (negative)
and green (positive)

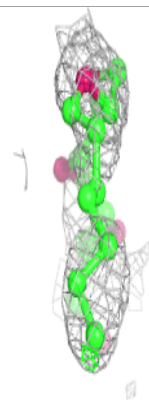
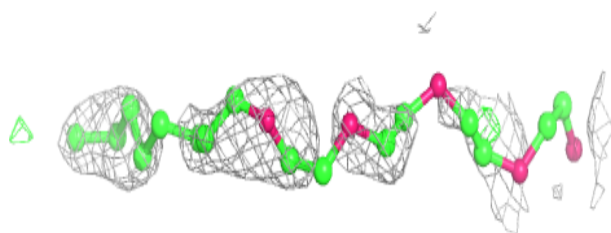
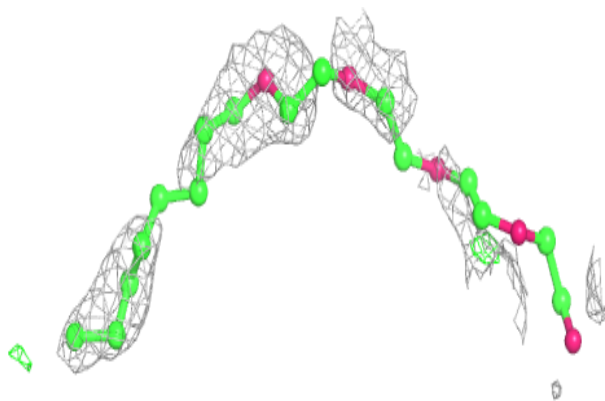
**Electron density around C8E A 1177:**

$2mF_o-DF_c$ (at 0.7 rmsd) in gray
 mF_o-DF_c (at 3 rmsd) in purple (negative)
and green (positive)

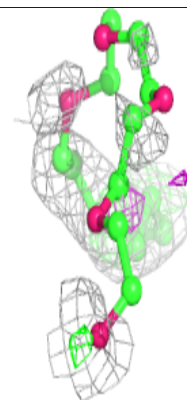
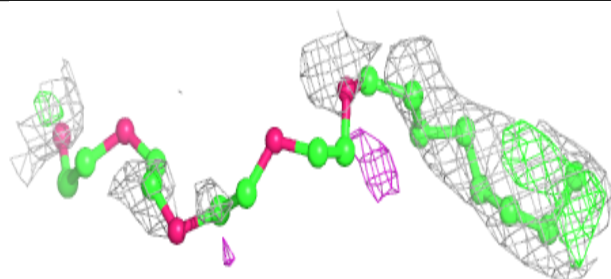
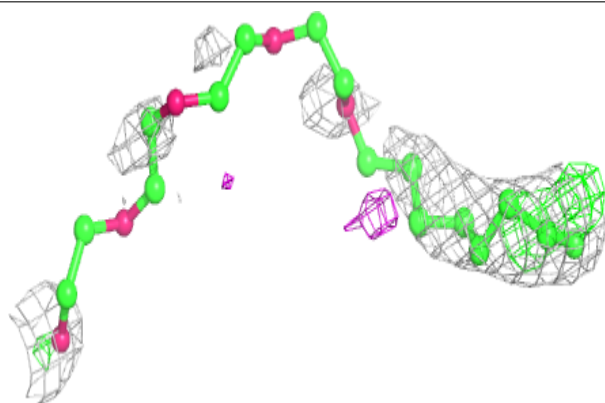


Electron density around C8E A 1174:

$2mF_o-DF_c$ (at 0.7 rmsd) in gray
 mF_o-DF_c (at 3 rmsd) in purple (negative)
and green (positive)

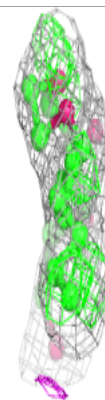
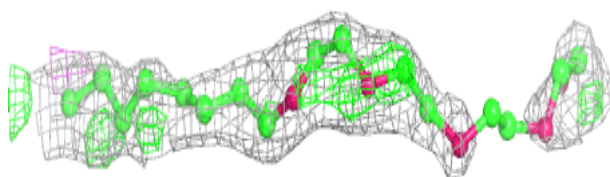
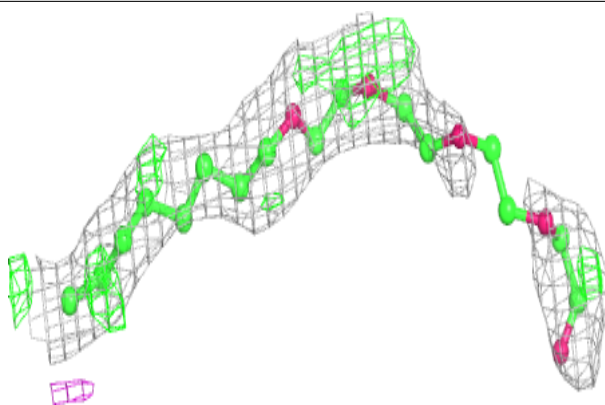
**Electron density around C8E A 1175:**

$2mF_o-DF_c$ (at 0.7 rmsd) in gray
 mF_o-DF_c (at 3 rmsd) in purple (negative)
and green (positive)

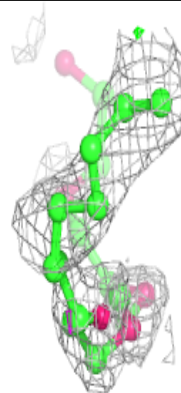
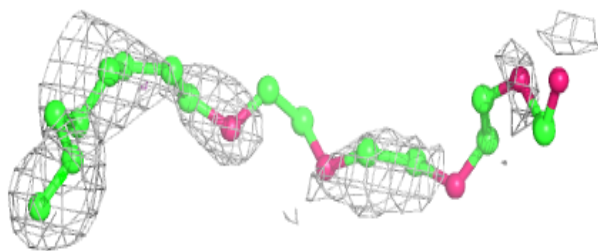
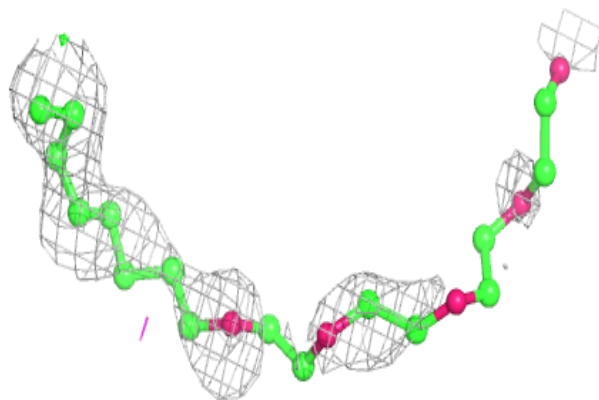


Electron density around C8E A 1172:

$2mF_o-DF_c$ (at 0.7 rmsd) in gray
 mF_o-DF_c (at 3 rmsd) in purple (negative)
and green (positive)

**Electron density around C8E A 1176:**

$2mF_o-DF_c$ (at 0.7 rmsd) in gray
 mF_o-DF_c (at 3 rmsd) in purple (negative)
and green (positive)



6.5 Other polymers

Unable to reproduce the depositors R factor - this section is therefore empty.