



# Full wwPDB X-ray Structure Validation Report ⓘ

May 16, 2020 – 01:12 am BST

PDB ID : 5QJI  
Title : PanDDA analysis group deposition of models with modelled events (e.g. bound ligands) – Crystal Structure of NUDT5 in complex with Z1899842917  
Authors : Dubianok, Y.; Collins, P.; Krojer, T.; Wright, N.; Strain-Damerell, C.; Burgess-Brown, N.; Bountra, C.; Arrowsmith, C.H.; Edwards, A.; Huber, K.; von Delft, F.  
Deposited on : 2018-10-31  
Resolution : 1.69 Å(reported)

This is a Full wwPDB X-ray Structure Validation Report for a publicly released PDB entry.

We welcome your comments at [validation@mail.wwpdb.org](mailto:validation@mail.wwpdb.org)

A user guide is available at

<https://www.wwpdb.org/validation/2017/XrayValidationReportHelp>

with specific help available everywhere you see the ⓘ symbol.

---

The following versions of software and data (see [references ⓘ](#)) were used in the production of this report:

MolProbity : 4.02b-467  
Mogul : 1.8.5 (274361), CSD as541be (2020)  
Xtriage (Phenix) : 1.13  
EDS : 2.11  
Percentile statistics : 20191225.v01 (using entries in the PDB archive December 25th 2019)  
Refmac : 5.8.0158  
CCP4 : 7.0.044 (Gargrove)  
Ideal geometry (proteins) : Engh & Huber (2001)  
Ideal geometry (DNA, RNA) : Parkinson et al. (1996)  
Validation Pipeline (wwPDB-VP) : 2.11

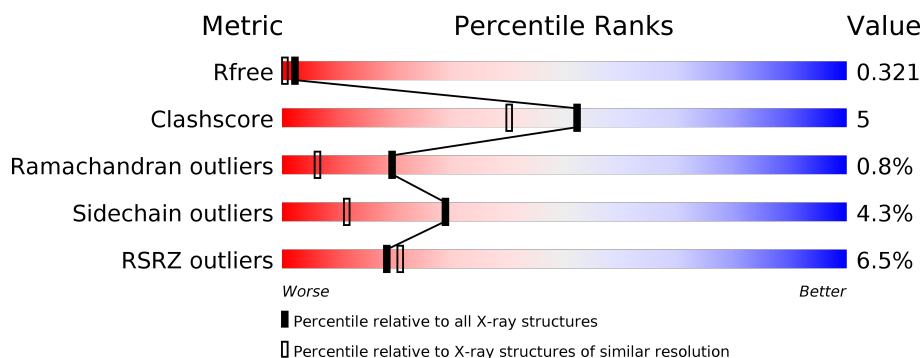
# 1 Overall quality at a glance

The following experimental techniques were used to determine the structure:

## *X-RAY DIFFRACTION*

The reported resolution of this entry is 1.69 Å.

Percentile scores (ranging between 0-100) for global validation metrics of the entry are shown in the following graphic. The table shows the number of entries on which the scores are based.



Metric	Whole archive (#Entries)	Similar resolution (#Entries, resolution range(Å))
$R_{free}$	130704	4298 (1.70-1.70)
Clashscore	141614	4695 (1.70-1.70)
Ramachandran outliers	138981	4610 (1.70-1.70)
Sidechain outliers	138945	4610 (1.70-1.70)
RSRZ outliers	127900	4222 (1.70-1.70)

The table below summarises the geometric issues observed across the polymeric chains and their fit to the electron density. The red, orange, yellow and green segments on the lower bar indicate the fraction of residues that contain outliers for  $\geq 3$ , 2, 1 and 0 types of geometric quality criteria respectively. A grey segment represents the fraction of residues that are not modelled. The numeric value for each fraction is indicated below the corresponding segment, with a dot representing fractions  $\leq 5\%$ . The upper red bar (where present) indicates the fraction of residues that have poor fit to the electron density. The numeric value is given above the bar.

Mol	Chain	Length	Quality of chain
1	A	209	<div> <div>5%</div> <div> <div></div> <div>82%</div> <div>9%</div> <div>7%</div> </div> </div>
1	B	209	<div> <div>4%</div> <div> <div></div> <div>82%</div> <div>9%</div> <div>7%</div> </div> </div>
1	C	209	<div> <div>4%</div> <div> <div></div> <div>78%</div> <div>12%</div> <div>8%</div> </div> </div>
1	D	209	<div> <div>11%</div> <div> <div></div> <div>74%</div> <div>16%</div> <div>9%</div> </div> </div>

## 2 Entry composition

There are 6 unique types of molecules in this entry. The entry contains 6010 atoms, of which 0 are hydrogens and 0 are deuteriums.

In the tables below, the ZeroOcc column contains the number of atoms modelled with zero occupancy, the AltConf column contains the number of residues with at least one atom in alternate conformation and the Trace column contains the number of residues modelled with at most 2 atoms.

- Molecule 1 is a protein called ADP-sugar pyrophosphatase.

Mol	Chain	Residues	Atoms					ZeroOcc	AltConf	Trace
1	A	194	Total	C	N	O	S	0	0	0
			1454	920	243	283	8			
1	B	194	Total	C	N	O	S	0	0	0
			1464	924	244	288	8			
1	C	192	Total	C	N	O	S	0	0	0
			1412	890	238	277	7			
1	D	190	Total	C	N	O	S	0	1	0
			1400	885	235	272	8			

There are 4 discrepancies between the modelled and reference sequences:

Chain	Residue	Modelled	Actual	Comment	Reference
A	0	SER	-	expression tag	UNP Q9UKK9
B	0	SER	-	expression tag	UNP Q9UKK9
C	0	SER	-	expression tag	UNP Q9UKK9
D	0	SER	-	expression tag	UNP Q9UKK9

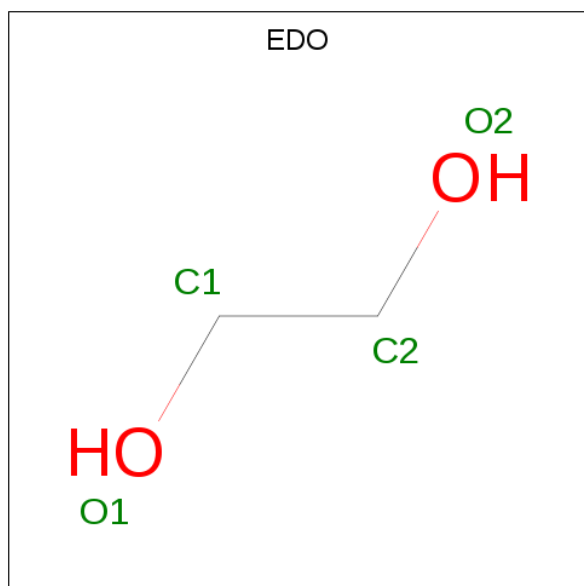
- Molecule 2 is MAGNESIUM ION (three-letter code: MG) (formula: Mg).

Mol	Chain	Residues	Atoms		ZeroOcc	AltConf
2	B	2	Total	Mg	0	0
			2	2		
2	A	2	Total	Mg	0	0
			2	2		
2	D	2	Total	Mg	0	0
			2	2		
2	C	2	Total	Mg	0	0
			2	2		

- Molecule 3 is CHLORIDE ION (three-letter code: CL) (formula: Cl).

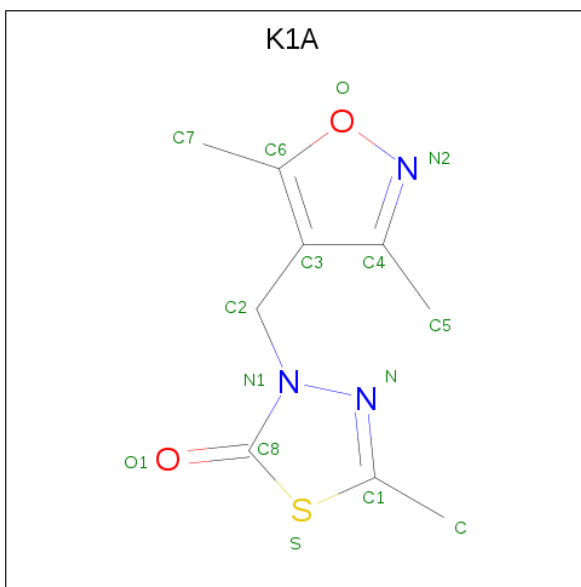
Mol	Chain	Residues	Atoms	ZeroOcc	AltConf
3	A	1	Total Cl 1 1	0	0

- Molecule 4 is 1,2-ETHANEDIOL (three-letter code: EDO) (formula: C<sub>2</sub>H<sub>6</sub>O<sub>2</sub>).



Mol	Chain	Residues	Atoms	ZeroOcc	AltConf
4	B	1	Total C O 4 2 2	0	0
4	B	1	Total C O 4 2 2	0	0
4	C	1	Total C O 4 2 2	0	0

- Molecule 5 is 3-[(3,5-dimethyl-1,2-oxazol-4-yl)methyl]-5-methyl-1,3,4-thiadiazol-2(3H)-one (three-letter code: K1A) (formula: C<sub>9</sub>H<sub>11</sub>N<sub>3</sub>O<sub>2</sub>S).



Mol	Chain	Residues	Atoms					ZeroOcc	AltConf
5	B	1	Total	C	N	O	S	0	0
			15	9	3	2	1		
5	D	1	Total	C	N	O	S	0	0
			15	9	3	2	1		

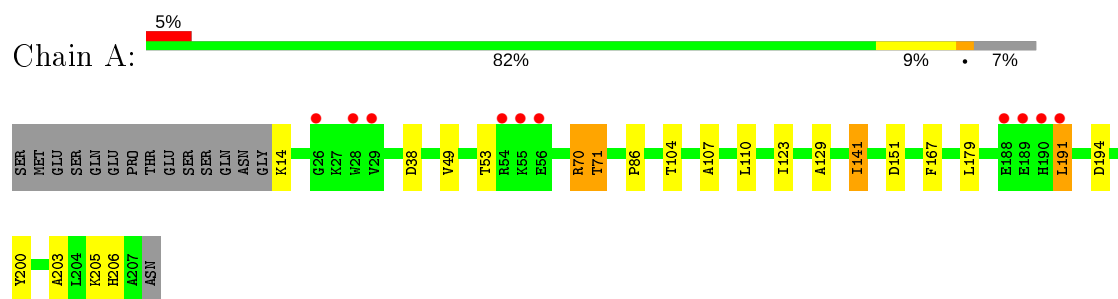
- Molecule 6 is water.

Mol	Chain	Residues	Atoms		ZeroOcc	AltConf
6	A	68	Total	O	0	0
			68	68		
6	B	67	Total	O	0	0
			67	67		
6	C	68	Total	O	0	0
			68	68		
6	D	26	Total	O	0	0
			26	26		

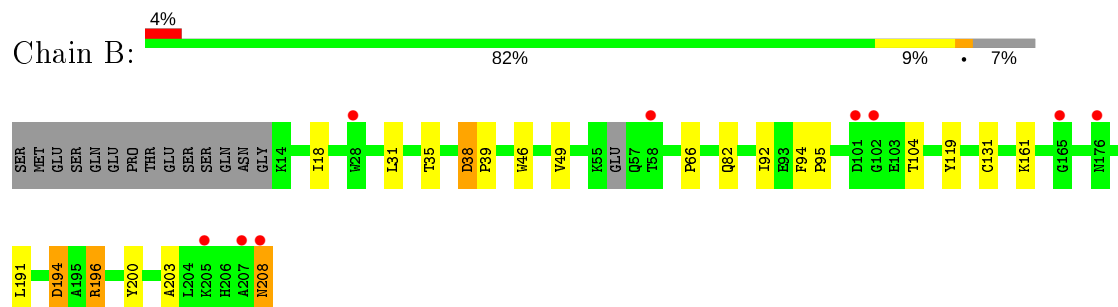
### 3 Residue-property plots [i](#)

These plots are drawn for all protein, RNA and DNA chains in the entry. The first graphic for a chain summarises the proportions of the various outlier classes displayed in the second graphic. The second graphic shows the sequence view annotated by issues in geometry and electron density. Residues are color-coded according to the number of geometric quality criteria for which they contain at least one outlier: green = 0, yellow = 1, orange = 2 and red = 3 or more. A red dot above a residue indicates a poor fit to the electron density ( $RSRZ > 2$ ). Stretches of 2 or more consecutive residues without any outlier are shown as a green connector. Residues present in the sample, but not in the model, are shown in grey.

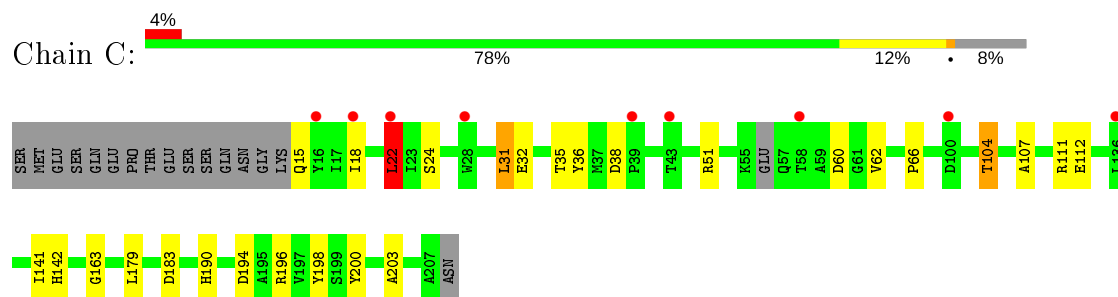
- Molecule 1: ADP-sugar pyrophosphatase



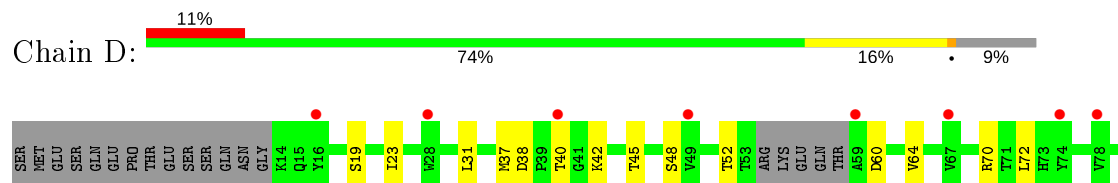
- Molecule 1: ADP-sugar pyrophosphatase

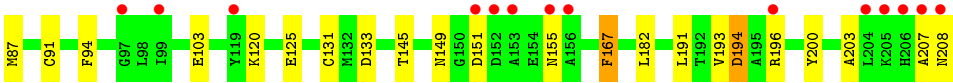


- Molecule 1: ADP-sugar pyrophosphatase



- Molecule 1: ADP-sugar pyrophosphatase





## 4 Data and refinement statistics

Property	Value	Source
Space group	P 1	Depositor
Cell constants a, b, c, $\alpha$ , $\beta$ , $\gamma$	48.98Å 59.77Å 79.38Å 79.84° 81.43° 75.99°	Depositor
Resolution (Å)	77.65 – 1.69 77.65 – 1.69	Depositor EDS
% Data completeness (in resolution range)	97.1 (77.65-1.69) 97.1 (77.65-1.69)	Depositor EDS
$R_{merge}$	0.05	Depositor
$R_{sym}$	(Not available)	Depositor
$\langle I/\sigma(I) \rangle$ <sup>1</sup>	1.30 (at 1.69Å)	Xtriage
Refinement program	REFMAC 5.8.0189	Depositor
R, $R_{free}$	0.257 , 0.301 0.275 , 0.321	Depositor DCC
$R_{free}$ test set	4681 reflections (5.04%)	wwPDB-VP
Wilson B-factor (Å <sup>2</sup> )	29.6	Xtriage
Anisotropy	0.301	Xtriage
Bulk solvent $k_{sol}$ (e/Å <sup>3</sup> ), $B_{sol}$ (Å <sup>2</sup> )	0.33 , 45.9	EDS
L-test for twinning <sup>2</sup>	$\langle  L  \rangle = 0.50$ , $\langle L^2 \rangle = 0.33$	Xtriage
Estimated twinning fraction	No twinning to report.	Xtriage
$F_o, F_c$ correlation	0.94	EDS
Total number of atoms	6010	wwPDB-VP
Average B, all atoms (Å <sup>2</sup> )	42.0	wwPDB-VP

Xtriage's analysis on translational NCS is as follows: *The largest off-origin peak in the Patterson function is 7.01% of the height of the origin peak. No significant pseudotranslation is detected.*

<sup>1</sup>Intensities estimated from amplitudes.

<sup>2</sup>Theoretical values of  $\langle |L| \rangle$ ,  $\langle L^2 \rangle$  for acentric reflections are 0.5, 0.333 respectively for untwinned datasets, and 0.375, 0.2 for perfectly twinned datasets.



## 5 Model quality [i](#)

### 5.1 Standard geometry [i](#)

Bond lengths and bond angles in the following residue types are not validated in this section: K1A, CL, MG, EDO

The Z score for a bond length (or angle) is the number of standard deviations the observed value is removed from the expected value. A bond length (or angle) with  $|Z| > 5$  is considered an outlier worth inspection. RMSZ is the root-mean-square of all Z scores of the bond lengths (or angles).

Mol	Chain	Bond lengths		Bond angles	
		RMSZ	# Z  >5	RMSZ	# Z  >5
1	A	0.88	0/1482	0.99	2/2023 (0.1%)
1	B	0.77	0/1492	0.94	3/2035 (0.1%)
1	C	0.91	0/1439	1.04	5/1969 (0.3%)
1	D	0.84	0/1426	0.96	4/1949 (0.2%)
All	All	0.85	0/5839	0.98	14/7976 (0.2%)

Chiral center outliers are detected by calculating the chiral volume of a chiral center and verifying if the center is modelled as a planar moiety or with the opposite hand. A planarity outlier is detected by checking planarity of atoms in a peptide group, atoms in a mainchain group or atoms of a sidechain that are expected to be planar.

Mol	Chain	#Chirality outliers	#Planarity outliers
1	A	0	1
1	C	0	2
1	D	0	1
All	All	0	4

There are no bond length outliers.

All (14) bond angle outliers are listed below:

Mol	Chain	Res	Type	Atoms	Z	Observed(°)	Ideal(°)
1	A	70	ARG	NE-CZ-NH1	9.42	125.01	120.30
1	B	196	ARG	NE-CZ-NH1	7.37	123.98	120.30
1	C	51	ARG	NE-CZ-NH1	6.58	123.59	120.30
1	C	22	LEU	CA-CB-CG	5.72	128.47	115.30
1	D	131	CYS	CA-CB-SG	5.70	124.25	114.00
1	D	194	ASP	CB-CG-OD1	-5.69	113.18	118.30
1	C	60	ASP	CB-CG-OD1	-5.66	113.20	118.30
1	D	31	LEU	CA-CB-CG	5.66	128.32	115.30
1	C	183	ASP	CB-CG-OD1	5.60	123.34	118.30

*Continued on next page...*

*Continued from previous page...*

Mol	Chain	Res	Type	Atoms	Z	Observed(°)	Ideal(°)
1	A	70	ARG	NE-CZ-NH2	-5.60	117.50	120.30
1	D	38	ASP	CB-CG-OD1	5.56	123.30	118.30
1	B	38	ASP	CB-CG-OD1	5.43	123.19	118.30
1	B	194	ASP	CB-CG-OD2	-5.27	113.55	118.30
1	C	190	HIS	N-CA-CB	5.12	119.82	110.60

There are no chirality outliers.

All (4) planarity outliers are listed below:

Mol	Chain	Res	Type	Group
1	A	141	ILE	Peptide
1	C	141	ILE	Peptide
1	C	163	GLY	Peptide
1	D	52	THR	Peptide

## 5.2 Too-close contacts

In the following table, the Non-H and H(model) columns list the number of non-hydrogen atoms and hydrogen atoms in the chain respectively. The H(added) column lists the number of hydrogen atoms added and optimized by MolProbity. The Clashes column lists the number of clashes within the asymmetric unit, whereas Symm-Clashes lists symmetry related clashes.

Mol	Chain	Non-H	H(model)	H(added)	Clashes	Symm-Clashes
1	A	1454	0	1416	18	0
1	B	1464	0	1414	16	0
1	C	1412	0	1320	13	0
1	D	1400	0	1334	26	0
2	A	2	0	0	0	0
2	B	2	0	0	0	0
2	C	2	0	0	1	0
2	D	2	0	0	0	0
3	A	1	0	0	0	0
4	B	8	0	12	1	0
4	C	4	0	6	0	0
5	B	15	0	0	0	0
5	D	15	0	0	0	0
6	A	68	0	0	1	0
6	B	67	0	0	3	0
6	C	68	0	0	3	0
6	D	26	0	0	1	0
All	All	6010	0	5502	62	0

The all-atom clashscore is defined as the number of clashes found per 1000 atoms (including hydrogen atoms). The all-atom clashscore for this structure is 5.

All (62) close contacts within the same asymmetric unit are listed below, sorted by their clash magnitude.

Atom-1	Atom-2	Interatomic distance (Å)	Clash overlap (Å)
1:D:196[B]:ARG:HH21	1:D:196[B]:ARG:CG	1.53	1.18
1:D:196[B]:ARG:NH2	1:D:196[B]:ARG:HG3	1.62	1.01
1:D:196[B]:ARG:HH21	1:D:196[B]:ARG:HG3	0.82	0.97
1:A:70:ARG:NH1	6:A:401:HOH:O	2.07	0.87
1:D:196[B]:ARG:NH2	1:D:196[B]:ARG:N	2.37	0.72
1:A:104:THR:HG23	1:A:107:ALA:H	1.58	0.67
1:B:208:ASN:C	1:B:208:ASN:HD22	1.98	0.67
1:D:196[B]:ARG:CG	1:D:196[B]:ARG:NH2	2.26	0.65
1:D:196[B]:ARG:HH21	1:D:196[B]:ARG:CB	2.10	0.64
2:C:302:MG:MG	6:C:408:HOH:O	1.41	0.62
1:D:196[B]:ARG:CB	1:D:196[B]:ARG:NH2	2.62	0.61
1:A:203:ALA:HB3	1:B:203:ALA:HB3	1.82	0.61
1:C:203:ALA:HB3	1:D:203:ALA:HB3	1.83	0.59
1:D:149:ASN:HD21	1:D:151:ASP:HB2	1.67	0.59
1:A:206:HIS:HD2	1:B:200:TYR:OH	1.86	0.58
1:C:104:THR:HG23	1:C:107:ALA:H	1.68	0.57
1:D:196[B]:ARG:H	1:D:196[B]:ARG:NH2	1.99	0.56
1:A:191:LEU:C	1:A:191:LEU:CD2	2.73	0.56
1:C:179:LEU:HD11	1:C:198:TYR:CZ	2.40	0.56
1:B:92:ILE:HD11	1:B:191:LEU:HD13	1.88	0.55
1:B:208:ASN:ND2	1:B:208:ASN:C	2.59	0.55
1:A:191:LEU:HD22	1:A:191:LEU:O	2.06	0.54
1:C:111:ARG:NH1	1:C:112:GLU:OE1	2.41	0.54
1:C:194:ASP:OD2	1:C:196:ARG:NH2	2.41	0.54
1:C:15:GLN:N	6:C:407:HOH:O	2.41	0.53
1:D:64:VAL:O	1:D:94:PHE:HB3	2.07	0.53
1:B:194:ASP:OD2	1:B:196:ARG:NH2	2.36	0.53
1:A:200:TYR:CD1	1:B:203:ALA:HB2	2.43	0.52
1:D:196[B]:ARG:CA	1:D:196[B]:ARG:NH2	2.74	0.50
1:C:200:TYR:CD1	1:D:203:ALA:HB2	2.48	0.49
1:C:38:ASP:HB2	1:D:167:PHE:CZ	2.49	0.48
1:A:110:LEU:HD11	1:A:123:ILE:HG12	1.95	0.48
1:C:38:ASP:HB2	1:D:167:PHE:CE2	2.48	0.48
1:C:36:TYR:OH	6:C:401:HOH:O	2.20	0.47
1:D:120:LYS:H	1:D:155:ASN:HD21	1.63	0.47
1:D:194:ASP:OD2	1:D:196[B]:ARG:NH1	2.48	0.46
1:D:182:LEU:HD22	1:D:193:VAL:HG13	1.97	0.46

*Continued on next page...*

Continued from previous page...

Atom-1	Atom-2	Interatomic distance (Å)	Clash overlap (Å)
1:D:207:ALA:O	1:D:208:ASN:HB3	2.15	0.46
1:A:129:ALA:HA	1:A:141:ILE:O	2.15	0.45
1:C:203:ALA:HB2	1:D:200:TYR:CD1	2.52	0.45
1:A:194:ASP:HA	1:B:131:CYS:SG	2.57	0.45
1:B:119:TYR:O	6:B:401:HOH:O	2.21	0.44
1:B:82:GLN:OE1	6:B:402:HOH:O	2.21	0.44
1:A:179:LEU:HD23	1:A:205:LYS:HD2	1.99	0.43
1:A:200:TYR:CG	1:B:203:ALA:HB2	2.54	0.43
1:D:120:LYS:N	1:D:155:ASN:HD21	2.16	0.43
1:D:125:GLU:HG2	1:D:145:THR:HB	2.01	0.42
1:D:133:ASP:OD2	6:D:401:HOH:O	2.21	0.42
1:A:104:THR:HG22	1:A:107:ALA:CB	2.50	0.42
1:A:86:PRO:HD3	1:B:46:TRP:CD1	2.54	0.42
1:A:167:PHE:CZ	1:B:39:PRO:HD2	2.55	0.42
1:D:182:LEU:HD22	1:D:193:VAL:CG1	2.50	0.42
1:A:49:VAL:HG21	1:B:49:VAL:HG11	2.02	0.42
1:B:94:PHE:O	1:B:95:PRO:C	2.57	0.42
1:C:62:VAL:HG12	1:C:142:HIS:HB2	2.02	0.42
1:B:18:ILE:HD12	1:B:35:THR:HG22	2.01	0.42
1:C:31:LEU:HD23	1:C:32:GLU:H	1.86	0.41
1:A:191:LEU:C	1:A:191:LEU:HD23	2.40	0.41
1:A:71:THR:HG23	1:A:151:ASP:OD2	2.21	0.41
1:D:87:MET:HG3	1:D:91:CYS:SG	2.61	0.41
4:B:301:EDO:C2	6:B:414:HOH:O	2.68	0.40
1:D:191:LEU:C	1:D:191:LEU:HD12	2.42	0.40

There are no symmetry-related clashes.

## 5.3 Torsion angles

### 5.3.1 Protein backbone

In the following table, the Percentiles column shows the percent Ramachandran outliers of the chain as a percentile score with respect to all X-ray entries followed by that with respect to entries of similar resolution.

The Analysed column shows the number of residues for which the backbone conformation was analysed, and the total number of residues.

Mol	Chain	Analysed	Favoured	Allowed	Outliers	Percentiles	
1	A	192/209 (92%)	187 (97%)	5 (3%)	0	100	100

Continued on next page...

*Continued from previous page...*

Mol	Chain	Analysed	Favoured	Allowed	Outliers	Percentiles	
1	B	190/209 (91%)	182 (96%)	6 (3%)	2 (1%)	14	3
1	C	188/209 (90%)	176 (94%)	8 (4%)	4 (2%)	7	1
1	D	187/209 (90%)	173 (92%)	14 (8%)	0	100	100
All	All	757/836 (91%)	718 (95%)	33 (4%)	6 (1%)	19	6

All (6) Ramachandran outliers are listed below:

Mol	Chain	Res	Type
1	C	24	SER
1	C	22	LEU
1	B	66	PRO
1	C	18	ILE
1	C	66	PRO
1	B	161	LYS

### 5.3.2 Protein sidechains ⓘ

In the following table, the Percentiles column shows the percent sidechain outliers of the chain as a percentile score with respect to all X-ray entries followed by that with respect to entries of similar resolution.

The Analysed column shows the number of residues for which the sidechain conformation was analysed, and the total number of residues.

Mol	Chain	Analysed	Rotameric	Outliers	Percentiles	
1	A	152/179 (85%)	147 (97%)	5 (3%)	38	19
1	B	154/179 (86%)	150 (97%)	4 (3%)	46	28
1	C	141/179 (79%)	137 (97%)	4 (3%)	43	25
1	D	142/179 (79%)	130 (92%)	12 (8%)	10	2
All	All	589/716 (82%)	564 (96%)	25 (4%)	29	12

All (25) residues with a non-rotameric sidechain are listed below:

Mol	Chain	Res	Type
1	A	14	LYS
1	A	38	ASP
1	A	53	THR
1	A	71	THR
1	A	191	LEU

*Continued on next page...*

*Continued from previous page...*

Mol	Chain	Res	Type
1	B	31	LEU
1	B	38	ASP
1	B	104	THR
1	B	208	ASN
1	C	22	LEU
1	C	31	LEU
1	C	35	THR
1	C	104	THR
1	D	19	SER
1	D	23	ILE
1	D	37	MET
1	D	40	THR
1	D	42	LYS
1	D	45	THR
1	D	48	SER
1	D	60	ASP
1	D	70	ARG
1	D	72	LEU
1	D	103	GLU
1	D	167	PHE

Some sidechains can be flipped to improve hydrogen bonding and reduce clashes. All (11) such sidechains are listed below:

Mol	Chain	Res	Type
1	A	73	HIS
1	A	180	GLN
1	A	206	HIS
1	B	176	ASN
1	B	206	HIS
1	B	208	ASN
1	C	206	HIS
1	D	149	ASN
1	D	155	ASN
1	D	206	HIS
1	D	208	ASN

### 5.3.3 RNA ⓘ

There are no RNA molecules in this entry.

## 5.4 Non-standard residues in protein, DNA, RNA chains [i](#)

There are no non-standard protein/DNA/RNA residues in this entry.

## 5.5 Carbohydrates [i](#)

There are no carbohydrates in this entry.

## 5.6 Ligand geometry [i](#)

Of 14 ligands modelled in this entry, 9 are monoatomic - leaving 5 for Mogul analysis.

In the following table, the Counts columns list the number of bonds (or angles) for which Mogul statistics could be retrieved, the number of bonds (or angles) that are observed in the model and the number of bonds (or angles) that are defined in the Chemical Component Dictionary. The Link column lists molecule types, if any, to which the group is linked. The Z score for a bond length (or angle) is the number of standard deviations the observed value is removed from the expected value. A bond length (or angle) with  $|Z| > 2$  is considered an outlier worth inspection. RMSZ is the root-mean-square of all Z scores of the bond lengths (or angles).

Mol	Type	Chain	Res	Link	Bond lengths			Bond angles		
					Counts	RMSZ	# $ Z  > 2$	Counts	RMSZ	# $ Z  > 2$
4	EDO	B	305	-	3,3,3	0.49	0	2,2,2	0.57	0
5	K1A	B	304	-	10,16,16	1.93	3 (30%)	8,23,23	1.38	1 (12%)
5	K1A	D	303	-	10,16,16	1.63	2 (20%)	8,23,23	1.50	3 (37%)
4	EDO	B	301	-	3,3,3	0.65	0	2,2,2	0.38	0
4	EDO	C	301	-	3,3,3	0.45	0	2,2,2	0.61	0

In the following table, the Chirals column lists the number of chiral outliers, the number of chiral centers analysed, the number of these observed in the model and the number defined in the Chemical Component Dictionary. Similar counts are reported in the Torsion and Rings columns. '-' means no outliers of that kind were identified.

Mol	Type	Chain	Res	Link	Chirals	Torsions	Rings
4	EDO	B	305	-	-	0/1/1/1	-
5	K1A	B	304	-	-	0/2/4/4	0/2/2/2
5	K1A	D	303	-	-	0/2/4/4	0/2/2/2
4	EDO	B	301	-	-	0/1/1/1	-
4	EDO	C	301	-	-	0/1/1/1	-

All (5) bond length outliers are listed below:

Mol	Chain	Res	Type	Atoms	Z	Observed(Å)	Ideal(Å)
5	B	304	K1A	C3-C4	3.93	1.46	1.39
5	D	303	K1A	C3-C4	3.82	1.46	1.39
5	B	304	K1A	C2-C3	-3.68	1.45	1.51
5	B	304	K1A	O1-C8	2.18	1.24	1.21
5	D	303	K1A	C2-C3	-2.07	1.48	1.51

All (4) bond angle outliers are listed below:

Mol	Chain	Res	Type	Atoms	Z	Observed(°)	Ideal(°)
5	D	303	K1A	C7-C6-C3	2.54	135.12	126.51
5	B	304	K1A	C7-C6-C3	2.24	134.12	126.51
5	D	303	K1A	C3-C2-N1	-2.16	107.67	112.78
5	D	303	K1A	C-C1-N	2.01	124.07	119.65

There are no chirality outliers.

There are no torsion outliers.

There are no ring outliers.

1 monomer is involved in 1 short contact:

Mol	Chain	Res	Type	Clashes	Symm-Clashes
4	B	301	EDO	1	0

## 5.7 Other polymers [i](#)

There are no such residues in this entry.

## 5.8 Polymer linkage issues [i](#)

There are no chain breaks in this entry.



## 6 Fit of model and data

### 6.1 Protein, DNA and RNA chains

In the following table, the column labelled ‘#RSRZ> 2’ contains the number (and percentage) of RSRZ outliers, followed by percent RSRZ outliers for the chain as percentile scores relative to all X-ray entries and entries of similar resolution. The OWAB column contains the minimum, median, 95<sup>th</sup> percentile and maximum values of the occupancy-weighted average B-factor per residue. The column labelled ‘Q< 0.9’ lists the number of (and percentage) of residues with an average occupancy less than 0.9.

Mol	Chain	Analysed	<RSRZ>	#RSRZ>2		OWAB(Å <sup>2</sup> )	Q<0.9
1	A	194/209 (92%)	0.18	10 (5%)	27 30	23, 35, 58, 69	12 (6%)
1	B	194/209 (92%)	0.17	9 (4%)	32 36	25, 39, 64, 84	4 (2%)
1	C	192/209 (91%)	0.33	9 (4%)	31 35	20, 41, 68, 86	0
1	D	190/209 (90%)	0.92	22 (11%)	4 5	27, 45, 70, 89	7 (3%)
All	All	770/836 (92%)	0.40	50 (6%)	18 21	20, 40, 67, 89	23 (2%)

All (50) RSRZ outliers are listed below:

Mol	Chain	Res	Type	RSRZ
1	D	207	ALA	8.7
1	A	191	LEU	7.6
1	B	208	ASN	7.4
1	B	207	ALA	7.2
1	D	204	LEU	6.7
1	D	208	ASN	6.6
1	A	54	ARG	6.5
1	D	206	HIS	6.3
1	D	196[A]	ARG	5.0
1	A	55	LYS	4.7
1	D	205	LYS	4.6
1	B	58	THR	4.5
1	A	190	HIS	4.4
1	B	28	TRP	4.0
1	B	165	GLY	3.9
1	D	99	ILE	3.7
1	B	205	LYS	3.6
1	A	189	GLU	3.6
1	D	155	ASN	3.6
1	D	28	TRP	3.5
1	C	22	LEU	3.5

*Continued on next page...*

*Continued from previous page...*

Mol	Chain	Res	Type	RSRZ
1	D	78	VAL	3.2
1	C	16	TYR	3.1
1	D	40	THR	3.0
1	A	56	GLU	2.9
1	D	152	ASP	2.9
1	D	119	TYR	2.8
1	D	153	ALA	2.7
1	B	101	ASP	2.7
1	C	28	TRP	2.7
1	C	100	ASP	2.7
1	C	58	THR	2.6
1	A	26	GLY	2.6
1	A	29	VAL	2.6
1	A	188	GLU	2.5
1	C	18	ILE	2.5
1	C	43	THR	2.5
1	D	59	ALA	2.4
1	D	156	ALA	2.4
1	D	67	VAL	2.3
1	D	49	VAL	2.3
1	A	28	TRP	2.3
1	D	151	ASP	2.2
1	B	176	ASN	2.2
1	C	136	LEU	2.2
1	C	39	PRO	2.2
1	D	16	TYR	2.1
1	D	74	TYR	2.1
1	B	102	GLY	2.1
1	D	97	GLY	2.0

## 6.2 Non-standard residues in protein, DNA, RNA chains ⓘ

There are no non-standard protein/DNA/RNA residues in this entry.

## 6.3 Carbohydrates ⓘ

There are no carbohydrates in this entry.

## 6.4 Ligands [i](#)

In the following table, the Atoms column lists the number of modelled atoms in the group and the number defined in the chemical component dictionary. The B-factors column lists the minimum, median, 95<sup>th</sup> percentile and maximum values of B factors of atoms in the group. The column labelled 'Q< 0.9' lists the number of atoms with occupancy less than 0.9.

Mol	Type	Chain	Res	Atoms	RSCC	RSR	B-factors(Å <sup>2</sup> )	Q<0.9
5	K1A	D	303	15/15	0.70	0.16	51,58,79,79	0
3	CL	A	303	1/1	0.74	0.09	71,71,71,71	0
4	EDO	B	305	4/4	0.78	0.12	42,43,43,43	0
5	K1A	B	304	15/15	0.79	0.16	39,43,47,49	15
2	MG	B	303	1/1	0.86	0.08	73,73,73,73	0
2	MG	A	302	1/1	0.91	0.10	61,61,61,61	0
4	EDO	B	301	4/4	0.92	0.19	34,38,39,44	0
4	EDO	C	301	4/4	0.92	0.11	32,42,43,53	0
2	MG	C	302	1/1	0.94	0.06	47,47,47,47	0
2	MG	D	301	1/1	0.94	0.07	40,40,40,40	0
2	MG	D	302	1/1	0.95	0.07	47,47,47,47	0
2	MG	B	302	1/1	0.98	0.04	39,39,39,39	0
2	MG	C	303	1/1	0.99	0.06	39,39,39,39	0
2	MG	A	301	1/1	0.99	0.10	39,39,39,39	0

## 6.5 Other polymers [i](#)

There are no such residues in this entry.