



Full wwPDB X-ray Structure Validation Report ⓘ

Aug 6, 2020 – 12:50 PM BST

PDB ID : 1QM8
Title : Structure of Bacteriorhodopsin at 100 K
Authors : Takeda, K.; Matsui, Y.; Sato, H.; Hino, T.; Kanamori, E.; Okumura, H.; Yamane, T.; Kamiya, N.; Kouyama, T.
Deposited on : 1999-09-22
Resolution : 2.50 Å(reported)

This is a Full wwPDB X-ray Structure Validation Report for a publicly released PDB entry.

We welcome your comments at validation@mail.wwpdb.org

A user guide is available at

<https://www.wwpdb.org/validation/2017/XrayValidationReportHelp>

with specific help available everywhere you see the ⓘ symbol.

The following versions of software and data (see [references ⓘ](#)) were used in the production of this report:

MolProbity : 4.02b-467
Mogul : 1.8.5 (274361), CSD as541be (2020)
Xtriage (Phenix) : **NOT EXECUTED**
EDS : **NOT EXECUTED**
buster-report : 1.1.7 (2018)
Percentile statistics : 20191225.v01 (using entries in the PDB archive December 25th 2019)
Ideal geometry (proteins) : Engh & Huber (2001)
Ideal geometry (DNA, RNA) : Parkinson et al. (1996)
Validation Pipeline (wwPDB-VP) : 2.13.1

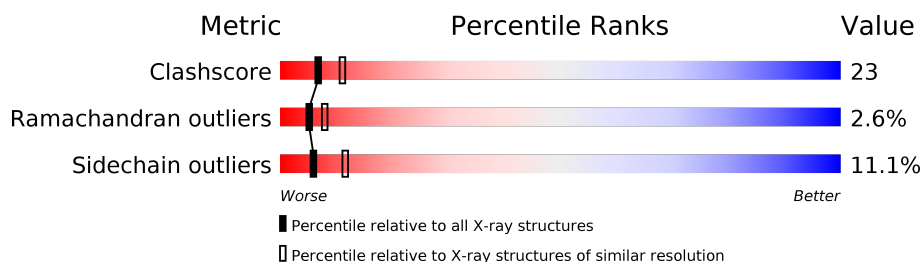
1 Overall quality at a glance

The following experimental techniques were used to determine the structure:

X-RAY DIFFRACTION

The reported resolution of this entry is 2.50 Å.

Percentile scores (ranging between 0-100) for global validation metrics of the entry are shown in the following graphic. The table shows the number of entries on which the scores are based.



Metric	Whole archive (#Entries)	Similar resolution (#Entries, resolution range(Å))
Clashscore	141614	5346 (2.50-2.50)
Ramachandran outliers	138981	5231 (2.50-2.50)
Sidechain outliers	138945	5233 (2.50-2.50)

The table below summarises the geometric issues observed across the polymeric chains and their fit to the electron density. The red, orange, yellow and green segments on the lower bar indicate the fraction of residues that contain outliers for ≥ 3 , 2, 1 and 0 types of geometric quality criteria respectively. A grey segment represents the fraction of residues that are not modelled. The numeric value for each fraction is indicated below the corresponding segment, with a dot representing fractions $\leq 5\%$.

Note EDS was not executed.

Mol	Chain	Length	Quality of chain
1	A	248	
2	B	3	

2 Entry composition [i](#)

There are 8 unique types of molecules in this entry. The entry contains 2039 atoms, of which 0 are hydrogens and 0 are deuteriums.

In the tables below, the ZeroOcc column contains the number of atoms modelled with zero occupancy, the AltConf column contains the number of residues with at least one atom in alternate conformation and the Trace column contains the number of residues modelled with at most 2 atoms.

- Molecule 1 is a protein called BACTERIORHODOPSIN.

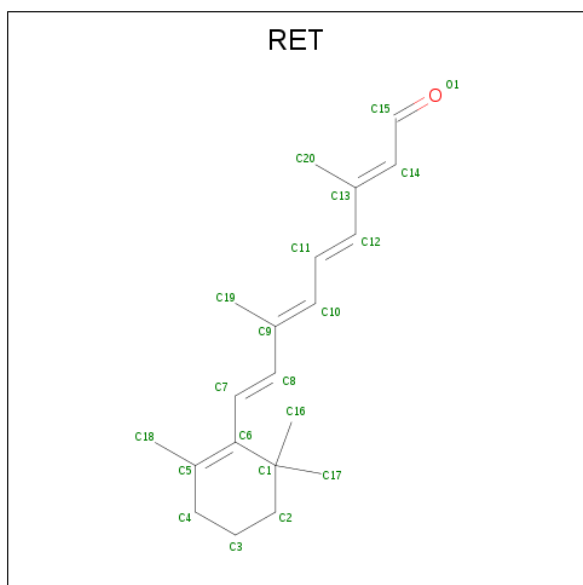
Mol	Chain	Residues	Atoms					ZeroOcc	AltConf	Trace
			Total	C	N	O	S			
1	A	229	1759	1183	267	300	9	0	0	0

- Molecule 2 is an oligosaccharide called beta-D-galactopyranose-(1-6)-alpha-D-mannopyranose-(1-2)-alpha-D-glucopyranose.



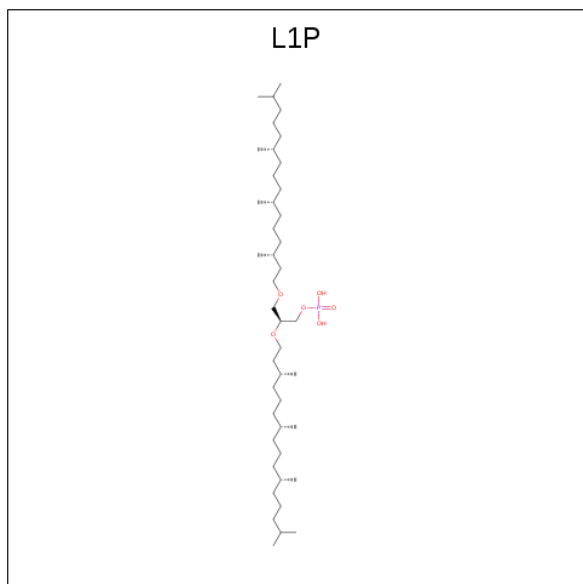
Mol	Chain	Residues	Atoms			ZeroOcc	AltConf	Trace
			Total	C	O			
2	B	3	33	18	15	0	0	0

- Molecule 3 is RETINAL (three-letter code: RET) (formula: C₂₀H₂₈O).



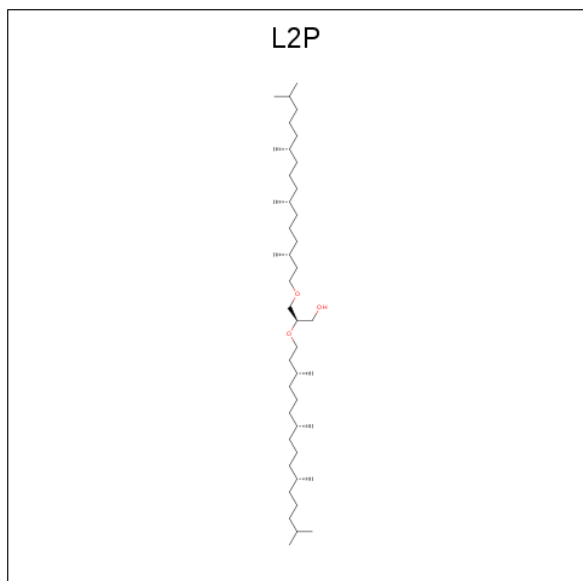
Mol	Chain	Residues	Atoms		ZeroOcc	AltConf
3	A	1	Total	C	0	0
			20	20		

- Molecule 4 is 3-PHOSPHORYL-[1,2-DI-PHYTANYL]GLYCEROL (three-letter code: L1P) (formula: $C_{43}H_{89}O_6P$).



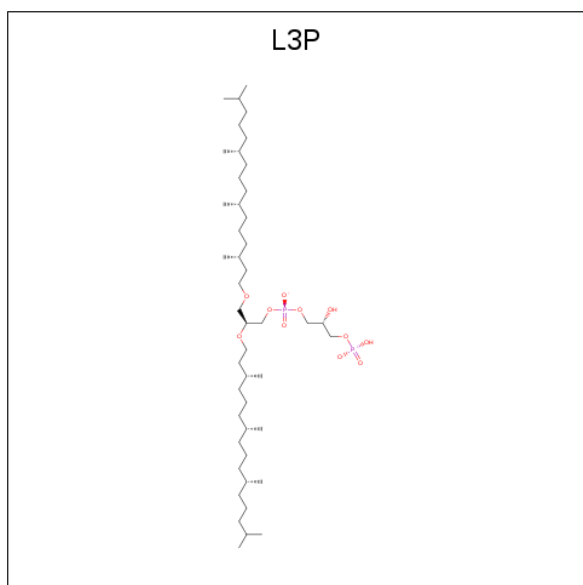
Mol	Chain	Residues	Atoms				ZeroOcc	AltConf
4	A	1	Total	C	O	P	0	0
			50	43	6	1		

- Molecule 5 is 2,3-DI-PHYTANYL-GLYCEROL (three-letter code: L2P) (formula: $C_{43}H_{88}O_3$).



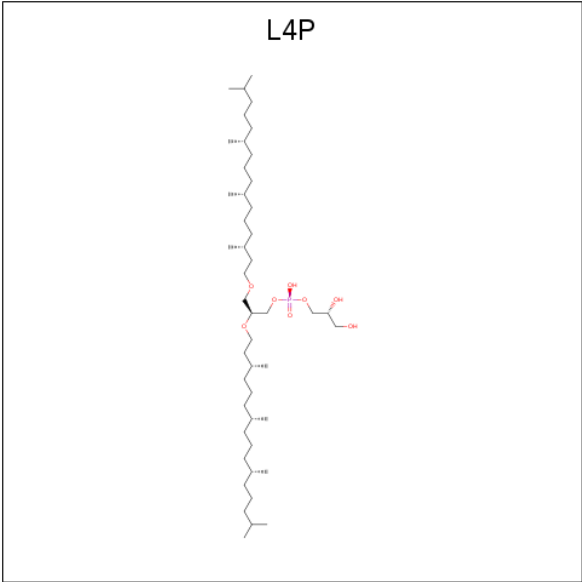
Mol	Chain	Residues	Atoms			ZeroOcc	AltConf
5	A	1	Total	C	O	0	0
			43	40	3		
5	A	1	Total	C	O	0	0
			30	27	3		

- Molecule 6 is 2,3-DI-O-PHYTANLY-3-SN-GLYCERO-1-PHOSPHORYL-3'-SN-GLYCEROL-1'-PHOSPHATE (three-letter code: L3P) (formula: C₄₆H₉₄O₁₁P₂).



Mol	Chain	Residues	Atoms				ZeroOcc	AltConf
6	A	1	Total	C	O	P	0	0
			40	27	11	2		

- Molecule 7 is 3-[GLYCEROLYLPHOSPHONYL]-[1,2-DI-PHYTANYL]GLYCEROL (three-letter code: L4P) (formula: C₄₆H₉₅O₈P).



Mol	Chain	Residues	Atoms				ZeroOcc	AltConf
7	A	1	Total	C	O	P	0	0
			41	33	7	1		

- Molecule 8 is water.

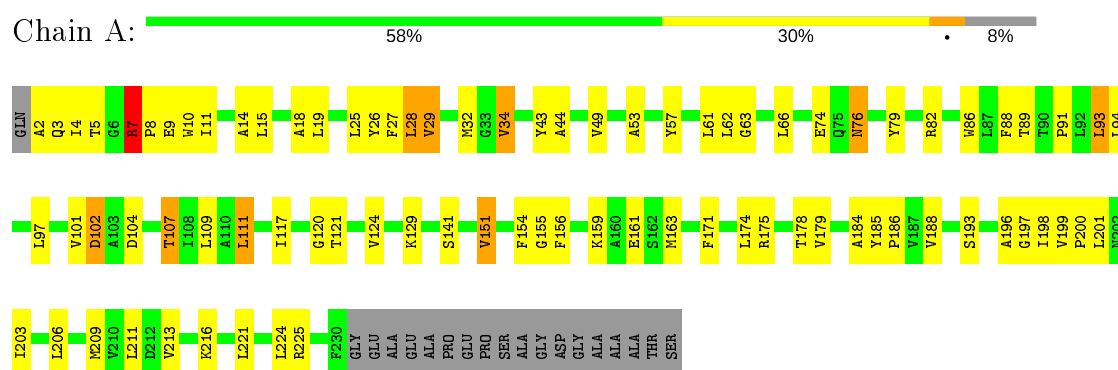
Mol	Chain	Residues	Atoms		ZeroOcc	AltConf
8	A	23	Total	O	0	0
			23	23		

3 Residue-property plots [i](#)

These plots are drawn for all protein, RNA, DNA and oligosaccharide chains in the entry. The first graphic for a chain summarises the proportions of the various outlier classes displayed in the second graphic. The second graphic shows the sequence view annotated by issues in geometry. Residues are color-coded according to the number of geometric quality criteria for which they contain at least one outlier: green = 0, yellow = 1, orange = 2 and red = 3 or more. Stretches of 2 or more consecutive residues without any outlier are shown as a green connector. Residues present in the sample, but not in the model, are shown in grey.

Note EDS was not executed.

- Molecule 1: BACTERIORHODOPSIN



- Molecule 2: beta-D-galactopyranose-(1-6)-alpha-D-mannopyranose-(1-2)-alpha-D-glucopyranose



4 Data and refinement statistics

Xtriage (Phenix) and EDS were not executed - this section is therefore incomplete.

Property	Value	Source
Space group	P 6 2 2	Depositor
Cell constants a, b, c, α , β , γ	102.10 Å 102.10 Å 112.30 Å 90.00° 90.00° 120.00°	Depositor
Resolution (Å)	8.00 – 2.50	Depositor
% Data completeness (in resolution range)	100.0 (8.00-2.50)	Depositor
R_{merge}	(Not available)	Depositor
R_{sym}	0.06	Depositor
Refinement program	X-PLOR 3.851	Depositor
R, R_{free}	0.251 , 0.278	Depositor
Estimated twinning fraction	No twinning to report.	Xtriage
Total number of atoms	2039	wwPDB-VP
Average B, all atoms (Å ²)	34.0	wwPDB-VP

5 Model quality [i](#)

5.1 Standard geometry [i](#)

Bond lengths and bond angles in the following residue types are not validated in this section: L4P, GLC, L1P, RET, L2P, GAL, L3P, MAN

The Z score for a bond length (or angle) is the number of standard deviations the observed value is removed from the expected value. A bond length (or angle) with $|Z| > 5$ is considered an outlier worth inspection. RMSZ is the root-mean-square of all Z scores of the bond lengths (or angles).

Mol	Chain	Bond lengths		Bond angles	
		RMSZ	$\# Z > 5$	RMSZ	$\# Z > 5$
1	A	0.43	0/1807	0.66	1/2470 (0.0%)

There are no bond length outliers.

All (1) bond angle outliers are listed below:

Mol	Chain	Res	Type	Atoms	Z	Observed($^{\circ}$)	Ideal($^{\circ}$)
1	A	7	ARG	N-CA-CB	-5.51	100.68	110.60

There are no chirality outliers.

There are no planarity outliers.

5.2 Too-close contacts [i](#)

In the following table, the Non-H and H(model) columns list the number of non-hydrogen atoms and hydrogen atoms in the chain respectively. The H(added) column lists the number of hydrogen atoms added and optimized by MolProbity. The Clashes column lists the number of clashes within the asymmetric unit, whereas Symm-Clashes lists symmetry related clashes.

Mol	Chain	Non-H	H(model)	H(added)	Clashes	Symm-Clashes
1	A	1759	0	1803	64	0
2	B	33	0	28	0	0
3	A	20	0	27	7	0
4	A	50	0	87	13	0
5	A	73	0	128	17	0
6	A	40	0	49	13	0
7	A	41	0	62	8	0
8	A	23	0	0	3	0
All	All	2039	0	2184	98	0

The all-atom clashscore is defined as the number of clashes found per 1000 atoms (including hydrogen atoms). The all-atom clashscore for this structure is 23.

All (98) close contacts within the same asymmetric unit are listed below, sorted by their clash magnitude.

Atom-1	Atom-2	Interatomic distance (Å)	Clash overlap (Å)
7:A:290:L4P:H221	7:A:290:L4P:H193	1.55	0.88
6:A:280:L3P:O3	6:A:280:L3P:H412	1.77	0.84
1:A:44:ALA:HA	4:A:260:L1P:H142	1.60	0.84
1:A:44:ALA:HA	4:A:260:L1P:C14	2.17	0.74
1:A:7:ARG:H	1:A:8:PRO:HD2	1.53	0.73
5:A:270:L2P:H172	5:A:270:L2P:H143	1.70	0.73
1:A:29:VAL:O	1:A:29:VAL:HG12	1.89	0.72
1:A:186:PRO:HB3	3:A:250:RET:H183	1.73	0.70
1:A:89:THR:HG21	1:A:216:LYS:NZ	2.08	0.69
1:A:14:ALA:HA	1:A:61:LEU:HD22	1.76	0.68
7:A:290:L4P:O1	7:A:290:L4P:H411	1.93	0.67
6:A:280:L3P:H141	6:A:280:L3P:C50	2.26	0.65
4:A:260:L1P:H112	8:A:2020:HOH:O	1.97	0.65
7:A:290:L4P:H193	7:A:290:L4P:C22	2.24	0.65
1:A:34:VAL:HG21	1:A:43:TYR:CE2	2.32	0.65
5:A:270:L2P:H472	5:A:270:L2P:H422	1.78	0.65
1:A:221:LEU:HD11	5:A:300:L2P:H543	1.80	0.63
1:A:63:GLY:HA2	6:A:280:L3P:O5P	1.98	0.63
6:A:280:L3P:H41	8:A:2022:HOH:O	1.98	0.63
1:A:62:LEU:HD21	6:A:280:L3P:H12	1.81	0.62
1:A:49:VAL:HG13	1:A:89:THR:HG23	1.81	0.62
1:A:89:THR:HG21	1:A:216:LYS:HE3	1.83	0.60
1:A:18:ALA:HB2	6:A:280:L3P:H491	1.83	0.60
1:A:89:THR:HG21	1:A:216:LYS:CE	2.32	0.59
1:A:3:GLN:CB	1:A:200:PRO:HA	2.34	0.58
5:A:270:L2P:H32	5:A:270:L2P:H421	1.85	0.58
1:A:86:TRP:CD1	3:A:250:RET:H14	2.40	0.57
7:A:290:L4P:C27	7:A:290:L4P:H243	2.36	0.56
1:A:2:ALA:CB	1:A:76:ASN:HB3	2.35	0.56
1:A:27:PHE:CD1	1:A:224:LEU:HD12	2.41	0.56
1:A:120:GLY:HA3	5:A:270:L2P:H191	1.88	0.55
5:A:270:L2P:H541	5:A:270:L2P:H151	1.88	0.55
1:A:121:THR:HG22	1:A:141:SER:HB2	1.88	0.55
1:A:15:LEU:HB3	1:A:209:MET:HE2	1.89	0.55
1:A:28:LEU:HD22	4:A:260:L1P:C49	2.37	0.54
5:A:270:L2P:C47	5:A:270:L2P:H422	2.38	0.53
1:A:174:LEU:O	1:A:178:THR:HG23	2.09	0.52

Continued on next page...

Continued from previous page...

Atom-1	Atom-2	Interatomic distance (Å)	Clash overlap (Å)
1:A:7:ARG:O	1:A:10:TRP:HB3	2.10	0.52
1:A:117:ILE:O	1:A:121:THR:HB	2.09	0.51
5:A:270:L2P:H143	5:A:270:L2P:C17	2.39	0.51
4:A:260:L1P:H301	6:A:280:L3P:C19	2.41	0.51
4:A:260:L1P:H302	6:A:280:L3P:H192	1.92	0.51
1:A:199:VAL:HG13	1:A:203:ILE:HB	1.93	0.50
1:A:53:ALA:HB2	1:A:216:LYS:HE2	1.93	0.50
1:A:49:VAL:HG21	1:A:93:LEU:HD13	1.93	0.50
1:A:196:ALA:HB2	7:A:290:L4P:H31	1.92	0.49
1:A:82:ARG:HH11	1:A:82:ARG:HG2	1.78	0.49
1:A:2:ALA:HB1	1:A:193:SER:HB2	1.95	0.48
1:A:124:VAL:CG2	5:A:270:L2P:H142	2.44	0.48
1:A:185:TYR:N	1:A:186:PRO:HD2	2.29	0.48
1:A:18:ALA:HB2	6:A:280:L3P:C49	2.44	0.47
4:A:260:L1P:H142	4:A:260:L1P:H111	1.50	0.47
4:A:260:L1P:C30	6:A:280:L3P:C19	2.93	0.47
1:A:196:ALA:O	1:A:198:ILE:N	2.44	0.47
1:A:111:LEU:HD11	1:A:151:VAL:CG2	2.46	0.46
1:A:9:GLU:OE2	1:A:79:TYR:HE2	1.97	0.46
5:A:270:L2P:C14	5:A:270:L2P:C17	2.93	0.46
1:A:104:ASP:HB2	1:A:107:THR:CG2	2.46	0.46
1:A:141:SER:HB3	3:A:250:RET:H41	1.97	0.46
1:A:141:SER:CB	3:A:250:RET:H41	2.46	0.46
1:A:200:PRO:HG2	1:A:203:ILE:HG12	1.98	0.46
1:A:141:SER:OG	3:A:250:RET:H41	2.16	0.46
1:A:15:LEU:HD23	1:A:209:MET:HE1	1.99	0.45
5:A:270:L2P:C15	5:A:270:L2P:H562	2.46	0.45
4:A:260:L1P:H161	4:A:260:L1P:H143	1.78	0.45
1:A:29:VAL:O	1:A:29:VAL:CG1	2.60	0.45
7:A:290:L4P:H202	7:A:290:L4P:H161	1.62	0.45
1:A:102:ASP:O	1:A:159:LYS:HE2	2.16	0.45
1:A:26:TYR:HE1	5:A:300:L2P:H412	1.82	0.44
7:A:290:L4P:O1	7:A:290:L4P:C41	2.62	0.44
1:A:5:THR:CB	1:A:201:LEU:HD23	2.48	0.44
1:A:5:THR:O	1:A:201:LEU:HD23	2.18	0.44
4:A:260:L1P:H292	4:A:260:L1P:H262	1.66	0.44
1:A:2:ALA:HB2	1:A:76:ASN:HB3	1.98	0.44
6:A:280:L3P:O3	6:A:280:L3P:C41	2.57	0.44
1:A:156:PHE:HB3	1:A:171:PHE:CZ	2.52	0.44
5:A:300:L2P:H12	5:A:300:L2P:H411	1.74	0.43
1:A:28:LEU:HD22	4:A:260:L1P:H492	2.00	0.43

Continued on next page...

Continued from previous page...

Atom-1	Atom-2	Interatomic distance (Å)	Clash overlap (Å)
1:A:88:PHE:C	1:A:91:PRO:HD2	2.38	0.43
1:A:175:ARG:O	1:A:179:VAL:HG23	2.19	0.43
3:A:250:RET:H7	3:A:250:RET:H181	1.58	0.43
5:A:270:L2P:H262	5:A:270:L2P:H243	1.86	0.43
4:A:260:L1P:H592	4:A:260:L1P:H562	1.74	0.43
1:A:109:LEU:HD12	1:A:109:LEU:O	2.19	0.43
1:A:184:ALA:O	1:A:188:VAL:HG23	2.19	0.42
7:A:290:L4P:H271	7:A:290:L4P:H243	2.00	0.42
1:A:9:GLU:OE2	1:A:79:TYR:CE2	2.72	0.42
1:A:19:LEU:HD12	1:A:213:VAL:HG21	2.02	0.42
5:A:270:L2P:H172	5:A:270:L2P:C14	2.45	0.41
1:A:225:ARG:HH21	5:A:300:L2P:H441	1.86	0.41
1:A:82:ARG:NH1	1:A:82:ARG:HG2	2.35	0.41
4:A:260:L1P:C30	6:A:280:L3P:H192	2.50	0.41
1:A:76:ASN:ND2	1:A:76:ASN:N	2.68	0.41
1:A:129:LYS:NZ	8:A:2014:HOH:O	2.54	0.41
6:A:280:L3P:C14	6:A:280:L3P:C50	2.95	0.41
1:A:10:TRP:CG	1:A:11:ILE:N	2.88	0.41
3:A:250:RET:H161	3:A:250:RET:H8	2.02	0.41
1:A:109:LEU:HD11	5:A:270:L2P:H303	2.04	0.40

There are no symmetry-related clashes.

5.3 Torsion angles [i](#)

5.3.1 Protein backbone [i](#)

In the following table, the Percentiles column shows the percent Ramachandran outliers of the chain as a percentile score with respect to all X-ray entries followed by that with respect to entries of similar resolution.

The Analysed column shows the number of residues for which the backbone conformation was analysed, and the total number of residues.

Mol	Chain	Analysed	Favoured	Allowed	Outliers	Percentiles
1	A	227/248 (92%)	209 (92%)	12 (5%)	6 (3%)	5 8

All (6) Ramachandran outliers are listed below:

Mol	Chain	Res	Type
1	A	7	ARG

Continued on next page...

Continued from previous page...

Mol	Chain	Res	Type
1	A	34	VAL
1	A	197	GLY
1	A	4	ILE
1	A	29	VAL
1	A	155	GLY

5.3.2 Protein sidechains ⓘ

In the following table, the Percentiles column shows the percent sidechain outliers of the chain as a percentile score with respect to all X-ray entries followed by that with respect to entries of similar resolution.

The Analysed column shows the number of residues for which the sidechain conformation was analysed, and the total number of residues.

Mol	Chain	Analysed	Rotameric	Outliers	Percentiles
1	A	180/194 (93%)	160 (89%)	20 (11%)	6 11

All (20) residues with a non-rotameric sidechain are listed below:

Mol	Chain	Res	Type
1	A	25	LEU
1	A	28	LEU
1	A	32	MET
1	A	57	TYR
1	A	66	LEU
1	A	74	GLU
1	A	76	ASN
1	A	93	LEU
1	A	94	LEU
1	A	97	LEU
1	A	101	VAL
1	A	102	ASP
1	A	107	THR
1	A	111	LEU
1	A	151	VAL
1	A	154	PHE
1	A	161	GLU
1	A	163	MET
1	A	206	LEU
1	A	211	LEU

Some sidechains can be flipped to improve hydrogen bonding and reduce clashes. There are no such sidechains identified.

5.3.3 RNA ⓘ

There are no RNA molecules in this entry.

5.4 Non-standard residues in protein, DNA, RNA chains ⓘ

There are no non-standard protein/DNA/RNA residues in this entry.

5.5 Carbohydrates ⓘ

3 monosaccharides are modelled in this entry.

In the following table, the Counts columns list the number of bonds (or angles) for which Mogul statistics could be retrieved, the number of bonds (or angles) that are observed in the model and the number of bonds (or angles) that are defined in the Chemical Component Dictionary. The Link column lists molecule types, if any, to which the group is linked. The Z score for a bond length (or angle) is the number of standard deviations the observed value is removed from the expected value. A bond length (or angle) with $|Z| > 2$ is considered an outlier worth inspection. RMSZ is the root-mean-square of all Z scores of the bond lengths (or angles).

Mol	Type	Chain	Res	Link	Bond lengths			Bond angles		
					Counts	RMSZ	# Z > 2	Counts	RMSZ	# Z > 2
2	GLC	B	1	2,5	11,11,12	1.58	2 (18%)	15,15,17	2.82	2 (13%)
2	MAN	B	2	2	11,11,12	0.80	0	15,15,17	0.78	0
2	GAL	B	3	2	11,11,12	1.49	3 (27%)	15,15,17	1.59	2 (13%)

In the following table, the Chirals column lists the number of chiral outliers, the number of chiral centers analysed, the number of these observed in the model and the number defined in the Chemical Component Dictionary. Similar counts are reported in the Torsion and Rings columns. '-' means no outliers of that kind were identified.

Mol	Type	Chain	Res	Link	Chirals	Torsions	Rings
2	GLC	B	1	2,5	-	0/2/19/22	0/1/1/1
2	MAN	B	2	2	-	2/2/19/22	0/1/1/1
2	GAL	B	3	2	-	0/2/19/22	0/1/1/1

All (5) bond length outliers are listed below:

Mol	Chain	Res	Type	Atoms	Z	Observed(Å)	Ideal(Å)
2	B	1	GLC	O5-C5	3.10	1.49	1.43
2	B	3	GAL	C4-C5	2.89	1.59	1.53
2	B	1	GLC	O5-C1	2.48	1.47	1.43
2	B	3	GAL	C4-C3	2.26	1.58	1.52
2	B	3	GAL	O4-C4	-2.05	1.38	1.43

All (4) bond angle outliers are listed below:

Mol	Chain	Res	Type	Atoms	Z	Observed(°)	Ideal(°)
2	B	1	GLC	O5-C5-C6	-9.22	92.75	107.20
2	B	3	GAL	C1-O5-C5	4.19	117.87	112.19
2	B	1	GLC	O3-C3-C4	-3.19	102.98	110.35
2	B	3	GAL	C1-C2-C3	-2.32	106.81	109.67

There are no chirality outliers.

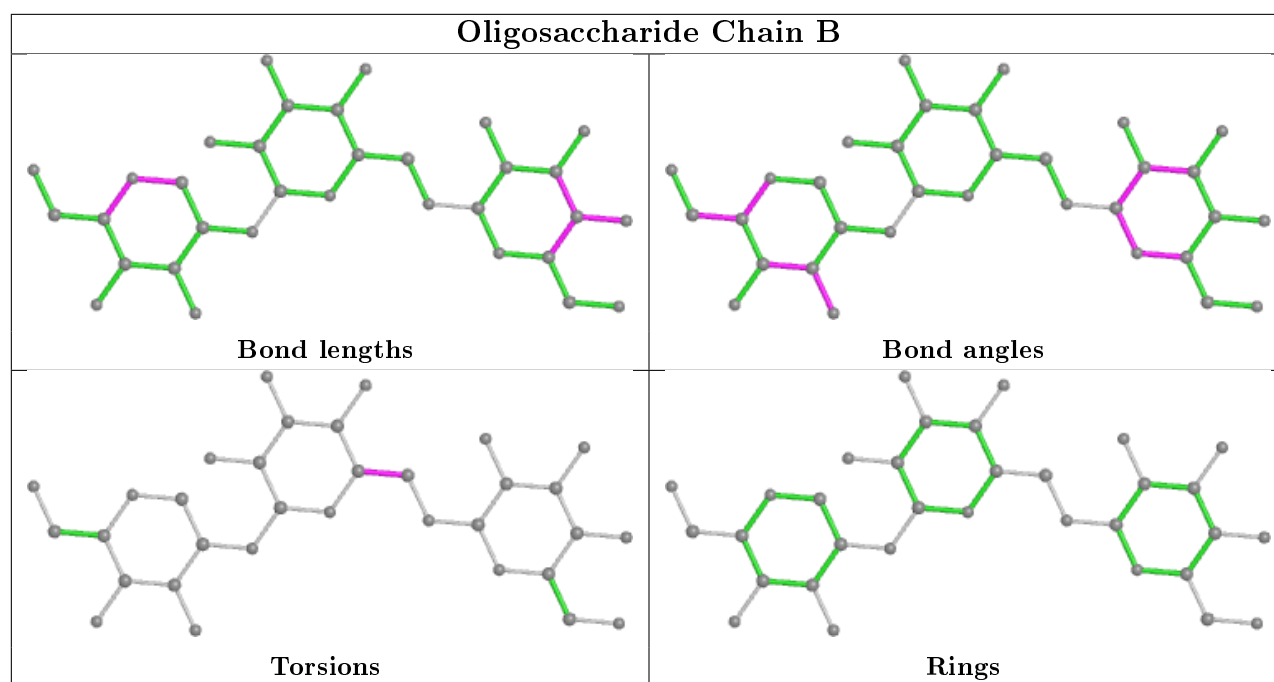
All (2) torsion outliers are listed below:

Mol	Chain	Res	Type	Atoms
2	B	2	MAN	O5-C5-C6-O6
2	B	2	MAN	C4-C5-C6-O6

There are no ring outliers.

No monomer is involved in short contacts.

The following is a two-dimensional graphical depiction of Mogul quality analysis of bond lengths, bond angles, torsion angles, and ring geometry for oligosaccharide.



5.6 Ligand geometry [i](#)

6 ligands are modelled in this entry.

In the following table, the Counts columns list the number of bonds (or angles) for which Mogul statistics could be retrieved, the number of bonds (or angles) that are observed in the model and the number of bonds (or angles) that are defined in the Chemical Component Dictionary. The Link column lists molecule types, if any, to which the group is linked. The Z score for a bond length (or angle) is the number of standard deviations the observed value is removed from the expected value. A bond length (or angle) with $|Z| > 2$ is considered an outlier worth inspection. RMSZ is the root-mean-square of all Z scores of the bond lengths (or angles).

Mol	Type	Chain	Res	Link	Bond lengths			Bond angles		
					Counts	RMSZ	$\# Z > 2$	Counts	RMSZ	$\# Z > 2$
5	L2P	A	300	-	29,29,45	0.55	0	31,33,53	1.22	4 (12%)
7	L4P	A	290	-	39,40,54	0.74	0	43,49,66	1.10	5 (11%)
3	RET	A	250	1	20,20,21	1.27	2 (10%)	27,27,28	1.48	6 (22%)
5	L2P	A	270	2	42,42,45	0.78	1 (2%)	47,49,53	1.01	2 (4%)
4	L1P	A	260	-	49,49,49	0.70	1 (2%)	57,60,60	1.15	7 (12%)
6	L3P	A	280	-	39,39,58	0.99	2 (5%)	44,50,73	0.86	0

In the following table, the Chirals column lists the number of chiral outliers, the number of chiral centers analysed, the number of these observed in the model and the number defined in the Chemical Component Dictionary. Similar counts are reported in the Torsion and Rings columns. '-' means no outliers of that kind were identified.

Mol	Type	Chain	Res	Link	Chirals	Torsions	Rings
5	L2P	A	300	-	-	20/33/33/51	-
7	L4P	A	290	-	-	18/46/46/63	-
3	RET	A	250	1	-	0/13/30/31	0/1/1/1
5	L2P	A	270	2	-	9/48/48/51	-
4	L1P	A	260	-	-	20/55/55/55	-
6	L3P	A	280	-	-	13/45/45/67	-

All (6) bond length outliers are listed below:

Mol	Chain	Res	Type	Atoms	Z	Observed(Å)	Ideal(Å)
3	A	250	RET	C2-C3	-3.73	1.43	1.52
4	A	260	L1P	P-O3P	2.43	1.64	1.54
3	A	250	RET	C7-C6	2.12	1.52	1.45
5	A	270	L2P	C49-C48	2.12	1.59	1.52
6	A	280	L3P	C4-C5	2.01	1.58	1.51
6	A	280	L3P	P1-O4	2.00	1.67	1.59

All (24) bond angle outliers are listed below:

Mol	Chain	Res	Type	Atoms	Z	Observed(°)	Ideal(°)
7	A	290	L4P	C41-O2-C2	3.34	123.07	115.40
3	A	250	RET	C1-C6-C7	3.31	125.16	115.78
3	A	250	RET	C18-C5-C6	-3.22	120.91	124.53
5	A	300	L2P	C41-O2-C2	3.20	122.75	115.40
5	A	270	L2P	C1-C2-C3	-2.87	105.09	111.80
7	A	290	L4P	C26-C25-C23	-2.77	106.97	115.92
3	A	250	RET	C7-C6-C5	-2.54	115.31	121.46
4	A	260	L1P	C41-O2-C2	2.54	121.23	115.40
5	A	300	L2P	C46-C47-C48	-2.52	107.76	115.92
5	A	270	L2P	C41-O2-C2	2.50	121.14	115.40
5	A	300	L2P	C46-C45-C43	-2.40	108.16	115.92
4	A	260	L1P	C16-C17-C18	-2.33	108.40	115.92
4	A	260	L1P	C21-C22-C23	-2.31	108.44	115.92
3	A	250	RET	C20-C13-C12	2.28	121.67	118.08
7	A	290	L4P	C16-C15-C13	-2.27	108.59	115.92
4	A	260	L1P	C21-C20-C18	-2.24	108.69	115.92
3	A	250	RET	C1-C6-C5	-2.23	119.47	122.61
3	A	250	RET	C10-C11-C12	-2.19	116.38	123.22
5	A	300	L2P	C51-C52-C53	-2.17	108.91	115.92
7	A	290	L4P	C11-O1-C1	2.09	122.95	113.61
7	A	290	L4P	C21-C22-C23	-2.07	109.22	115.92
4	A	260	L1P	C51-C52-C53	-2.05	109.30	115.92

Continued on next page...

Continued from previous page...

Mol	Chain	Res	Type	Atoms	Z	Observed(°)	Ideal(°)
4	A	260	L1P	C26-C25-C23	-2.04	109.34	115.92
4	A	260	L1P	C46-C47-C48	-2.01	109.44	115.92

There are no chirality outliers.

All (80) torsion outliers are listed below:

Mol	Chain	Res	Type	Atoms
5	A	300	L2P	O2-C2-C3-O3
5	A	300	L2P	C41-C42-C43-C44
7	A	290	L4P	O4-C4-C5-O5
5	A	270	L2P	O1-C1-C2-O2
5	A	270	L2P	C1-C2-C3-O3
5	A	270	L2P	O2-C2-C3-O3
6	A	280	L3P	O4-C4-C5-C6
6	A	280	L3P	C3-O3-P1-O1P
6	A	280	L3P	C4-O4-P1-O3
6	A	280	L3P	C4-O4-P1-O1P
6	A	280	L3P	O4-C4-C5-O5
6	A	280	L3P	O5-C5-C6-O6
6	A	280	L3P	C4-C5-C6-O6
4	A	260	L1P	C25-C26-C27-C28
7	A	290	L4P	C25-C26-C27-C28
4	A	260	L1P	C50-C51-C52-C53
5	A	270	L2P	C50-C51-C52-C53
4	A	260	L1P	C48-C50-C51-C52
6	A	280	L3P	C3-O3-P1-O4
7	A	290	L4P	C43-C45-C46-C47
4	A	260	L1P	C20-C21-C22-C23
5	A	270	L2P	C42-C41-O2-C2
4	A	260	L1P	C42-C41-O2-C2
4	A	260	L1P	C55-C56-C57-C58
5	A	300	L2P	C13-C15-C16-C17
7	A	290	L4P	C12-C13-C15-C16
4	A	260	L1P	C46-C47-C48-C50
7	A	290	L4P	C18-C20-C21-C22
6	A	280	L3P	C46-C47-C48-C50
7	A	290	L4P	C14-C13-C15-C16
6	A	280	L3P	C46-C47-C48-C49
5	A	300	L2P	C41-C42-C43-C45
5	A	300	L2P	O1-C1-C2-C3
5	A	270	L2P	O1-C1-C2-C3
7	A	290	L4P	O4-C4-C5-C6

Continued on next page...

Continued from previous page...

Mol	Chain	Res	Type	Atoms
5	A	300	L2P	C42-C43-C45-C46
4	A	260	L1P	C21-C22-C23-C25
4	A	260	L1P	C42-C43-C45-C46
4	A	260	L1P	C47-C48-C50-C51
5	A	300	L2P	C44-C43-C45-C46
5	A	300	L2P	C54-C53-C55-C56
4	A	260	L1P	C21-C22-C23-C24
4	A	260	L1P	C44-C43-C45-C46
4	A	260	L1P	C46-C47-C48-C49
4	A	260	L1P	C49-C48-C50-C51
6	A	280	L3P	C42-C41-O2-C2
7	A	290	L4P	C1-C2-C3-O3
5	A	300	L2P	C1-C2-O2-C41
7	A	290	L4P	C1-C2-O2-C41
5	A	300	L2P	C1-C2-C3-O3
5	A	300	L2P	O2-C41-C42-C43
5	A	300	L2P	C46-C47-C48-C50
5	A	300	L2P	C52-C53-C55-C56
6	A	280	L3P	C42-C43-C45-C46
5	A	300	L2P	C53-C55-C56-C57
4	A	260	L1P	C2-C3-O3-P
7	A	290	L4P	O2-C2-C3-O3
4	A	260	L1P	O2-C41-C42-C43
7	A	290	L4P	C5-C4-O4-P1
7	A	290	L4P	C26-C27-C28-C30
5	A	300	L2P	C12-C13-C15-C16
7	A	290	L4P	C16-C17-C18-C20
7	A	290	L4P	C41-C42-C43-C44
5	A	300	L2P	O1-C1-C2-O2
5	A	270	L2P	C23-C25-C26-C27
5	A	300	L2P	C46-C47-C48-C49
7	A	290	L4P	C24-C23-C25-C26
6	A	280	L3P	C44-C43-C45-C46
4	A	260	L1P	C15-C16-C17-C18
5	A	300	L2P	C12-C11-O1-C1
5	A	270	L2P	C2-C1-O1-C11
7	A	290	L4P	C3-O3-P1-O4
5	A	300	L2P	C14-C13-C15-C16
4	A	260	L1P	C43-C45-C46-C47
5	A	270	L2P	C13-C15-C16-C17
5	A	300	L2P	C2-C1-O1-C11
7	A	290	L4P	C19-C18-C20-C21

Continued on next page...

Continued from previous page...

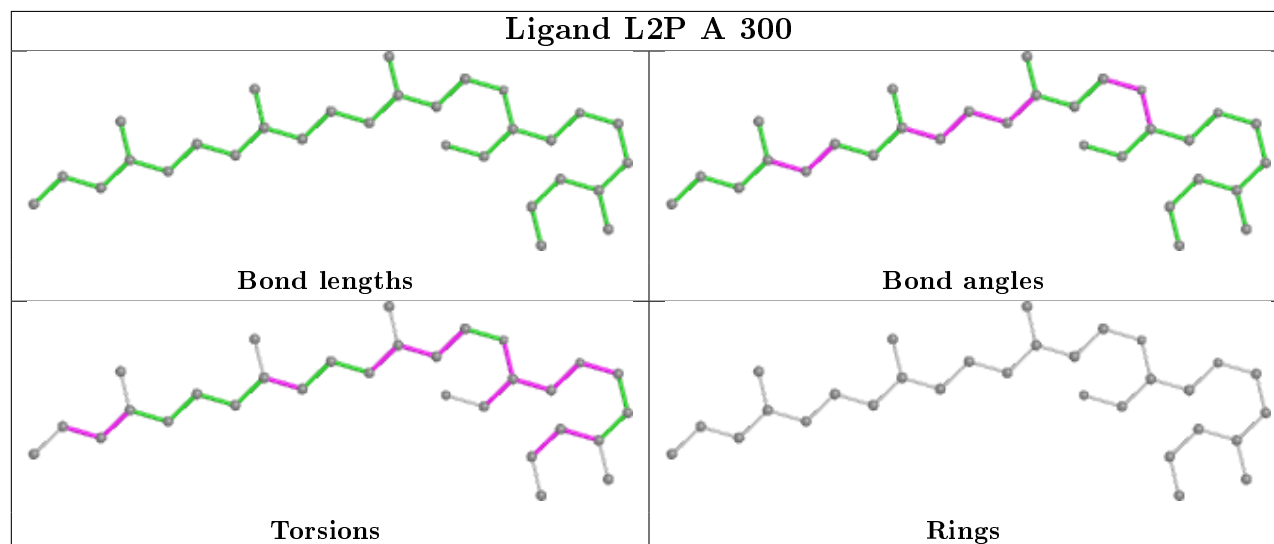
Mol	Chain	Res	Type	Atoms
4	A	260	L1P	C19-C18-C20-C21
7	A	290	L4P	C26-C27-C28-C29
4	A	260	L1P	C26-C27-C28-C29

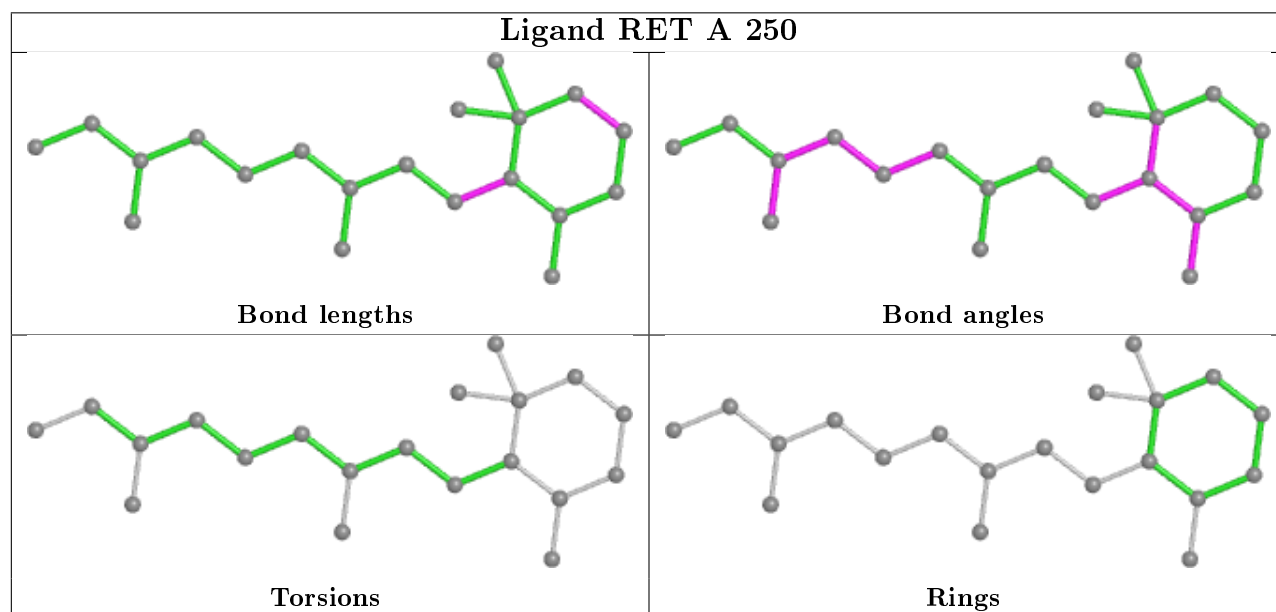
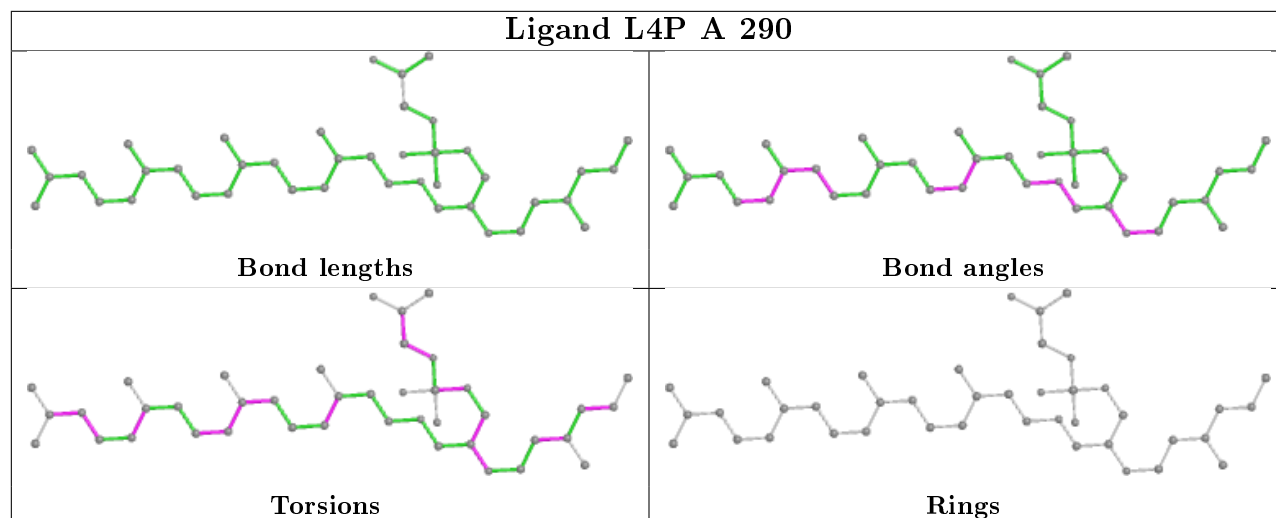
There are no ring outliers.

6 monomers are involved in 54 short contacts:

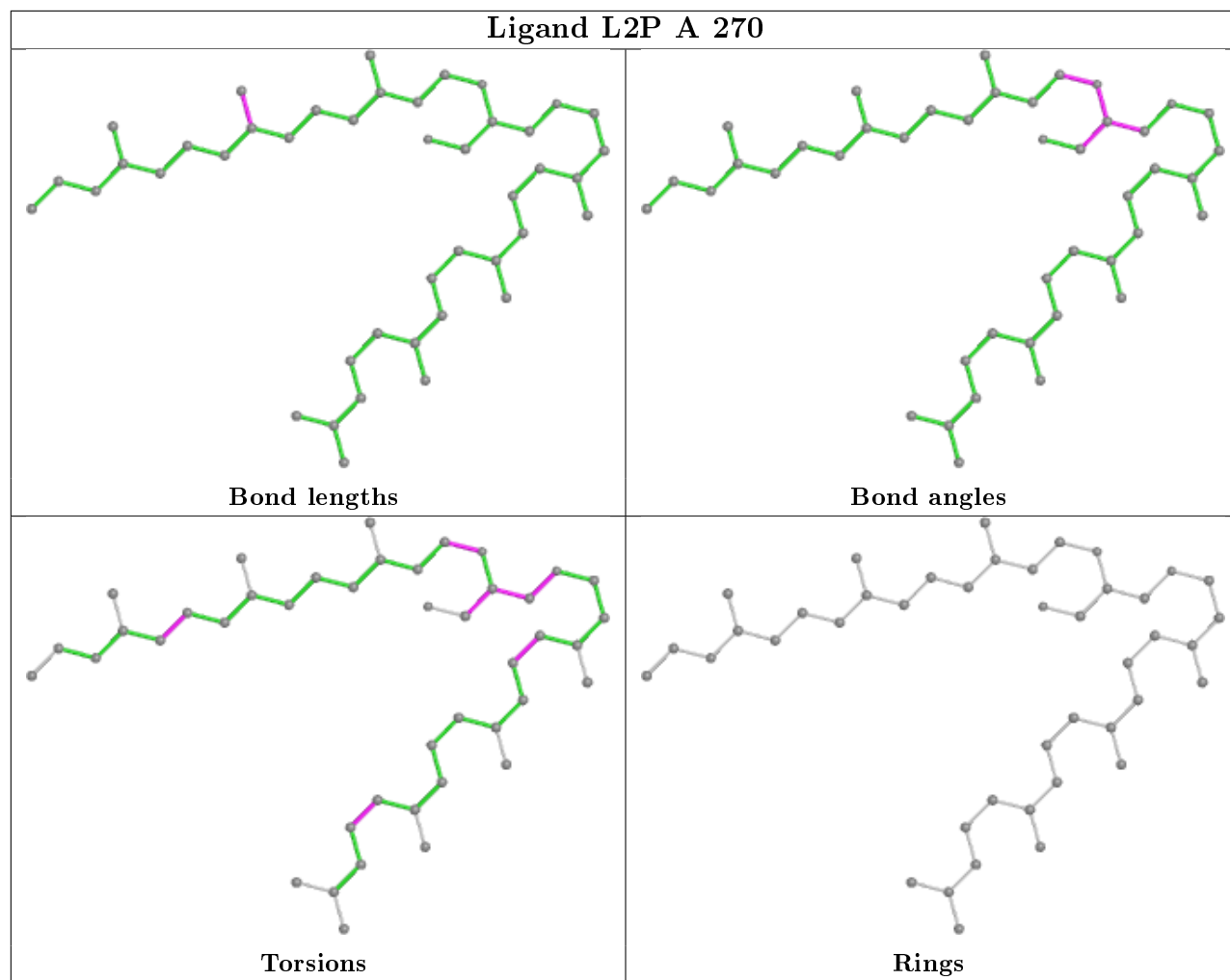
Mol	Chain	Res	Type	Clashes	Symm-Clashes
5	A	300	L2P	4	0
7	A	290	L4P	8	0
3	A	250	RET	7	0
5	A	270	L2P	13	0
4	A	260	L1P	13	0
6	A	280	L3P	13	0

The following is a two-dimensional graphical depiction of Mogul quality analysis of bond lengths, bond angles, torsion angles, and ring geometry for all instances of the Ligand of Interest. In addition, ligands with molecular weight > 250 and outliers as shown on the validation Tables will also be included. For torsion angles, if less than 5% of the Mogul distribution of torsion angles is within 10 degrees of the torsion angle in question, then that torsion angle is considered an outlier. Any bond that is central to one or more torsion angles identified as an outlier by Mogul will be highlighted in the graph. For rings, the root-mean-square deviation (RMSD) between the ring in question and similar rings identified by Mogul is calculated over all ring torsion angles. If the average RMSD is greater than 60 degrees and the minimal RMSD between the ring in question and any Mogul-identified rings is also greater than 60 degrees, then that ring is considered an outlier. The outliers are highlighted in purple. The color gray indicates Mogul did not find sufficient equivalents in the CSD to analyse the geometry.

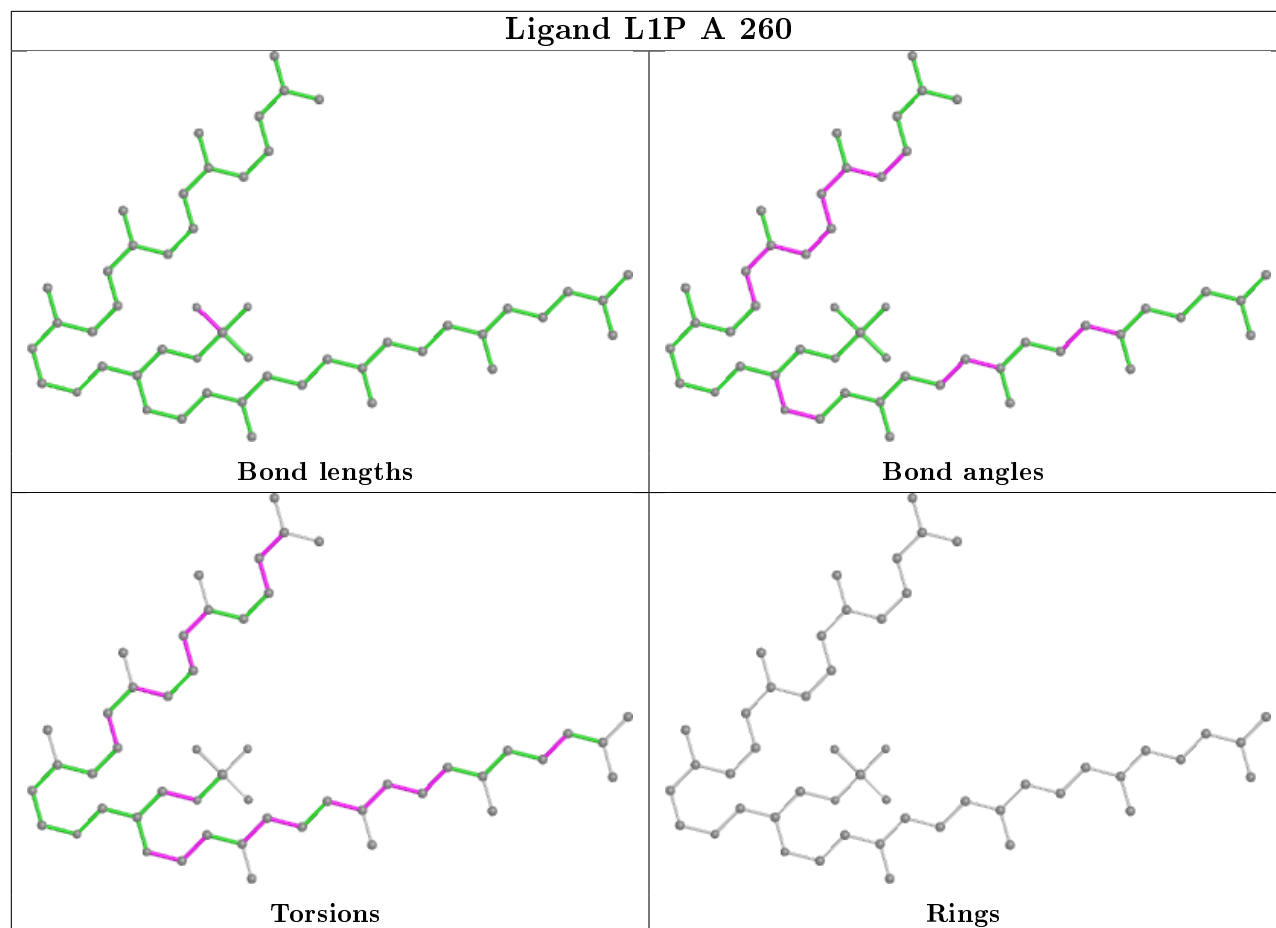




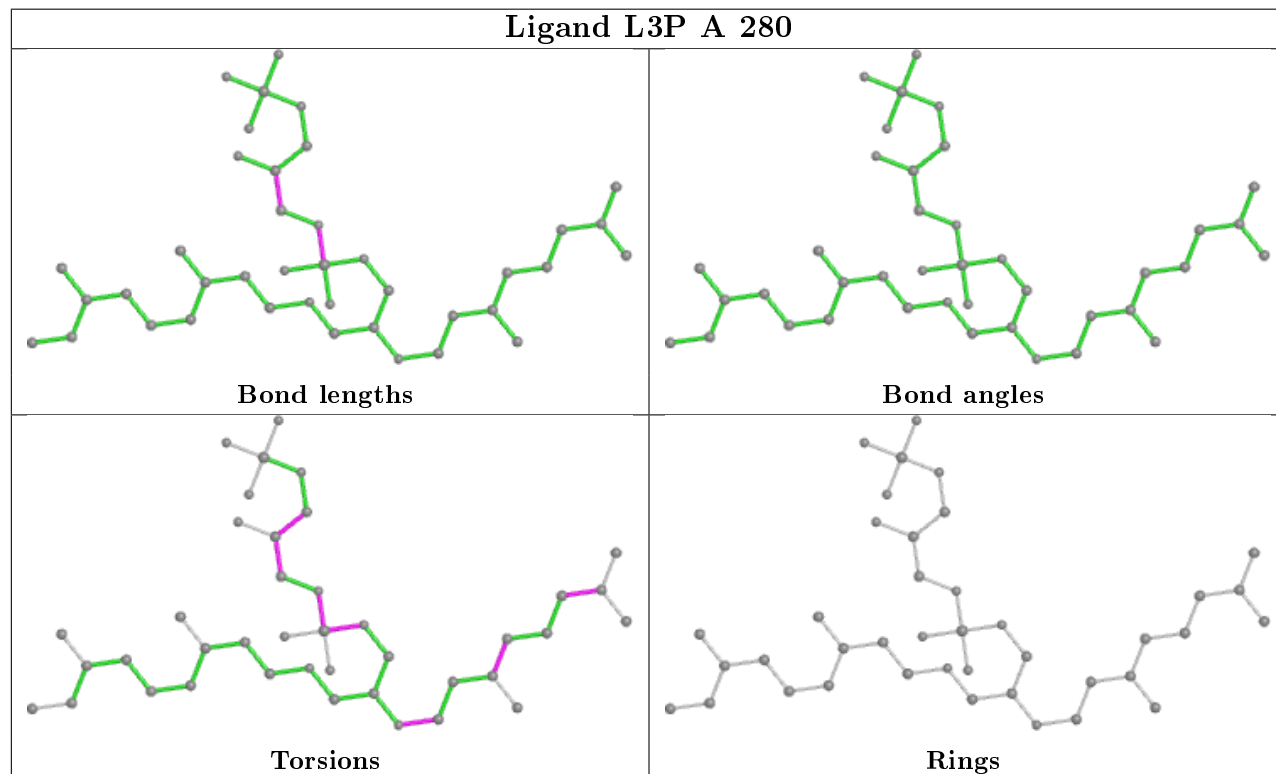
Ligand L2P A 270



Ligand L1P A 260



Ligand L3P A 280



5.7 Other polymers

There are no such residues in this entry.

5.8 Polymer linkage issues

There are no chain breaks in this entry.

6 Fit of model and data ⓘ

6.1 Protein, DNA and RNA chains ⓘ

EDS was not executed - this section is therefore empty.

6.2 Non-standard residues in protein, DNA, RNA chains ⓘ

EDS was not executed - this section is therefore empty.

6.3 Carbohydrates ⓘ

EDS was not executed - this section is therefore empty.

6.4 Ligands ⓘ

EDS was not executed - this section is therefore empty.

6.5 Other polymers ⓘ

EDS was not executed - this section is therefore empty.