



wwPDB EM Validation Summary Report ⓘ

Apr 10, 2022 – 07:08 am BST

PDB ID : 7QN7
EMDB ID : EMD-14069
Title : Cryo-EM structure of human full-length extrasynaptic alpha4beta3delta GABA(A)R in complex with GABA, histamine and nanobody Nb25
Authors : Sente, A.; Desai, R.; Naydenova, K.; Malinauskas, T.; Jounaidi, Y.; Miehl, J.; Zhou, X.; Masiulis, S.; Hardwick, S.W.; Chirgadze, D.Y.; Miller, K.W.; Aricescu, A.R.
Deposited on : 2021-12-20
Resolution : 3.00 Å(reported)

This is a wwPDB EM Validation Summary Report for a publicly released PDB entry.

We welcome your comments at validation@mail.wwpdb.org

A user guide is available at

<https://www.wwpdb.org/validation/2017/EMValidationReportHelp>

with specific help available everywhere you see the ⓘ symbol.

The following versions of software and data (see [references ⓘ](#)) were used in the production of this report:

EMDB validation analysis : 0.0.0.dev97
Mogul : 1.8.4, CSD as541be (2020)
MolProbity : 4.02b-467
buster-report : 1.1.7 (2018)
Percentile statistics : 20191225.v01 (using entries in the PDB archive December 25th 2019)
Ideal geometry (proteins) : Engh & Huber (2001)
Ideal geometry (DNA, RNA) : Parkinson et al. (1996)
Validation Pipeline (wwPDB-VP) : 2.27

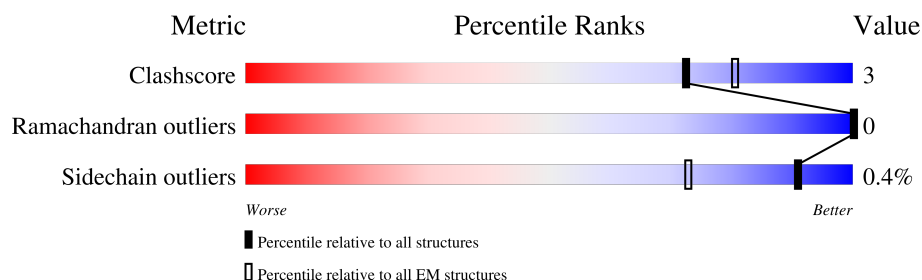
1 Overall quality at a glance

The following experimental techniques were used to determine the structure:

ELECTRON MICROSCOPY

The reported resolution of this entry is 3.00 Å.

Percentile scores (ranging between 0-100) for global validation metrics of the entry are shown in the following graphic. The table shows the number of entries on which the scores are based.



Metric	Whole archive (#Entries)	EM structures (#Entries)
Clashscore	158937	4297
Ramachandran outliers	154571	4023
Sidechain outliers	154315	3826

The table below summarises the geometric issues observed across the polymeric chains and their fit to the map. The red, orange, yellow and green segments of the bar indicate the fraction of residues that contain outliers for ≥ 3 , 2, 1 and 0 types of geometric quality criteria respectively. A grey segment represents the fraction of residues that are not modelled. The numeric value for each fraction is indicated below the corresponding segment, with a dot representing fractions $\leq 5\%$. The upper red bar (where present) indicates the fraction of residues that have poor fit to the EM map (all-atom inclusion $< 40\%$). The numeric value is given above the bar.

Mol	Chain	Length	Quality of chain
1	A	554	
2	B	473	
2	C	473	
2	D	473	
3	E	472	
4	F	121	
4	G	121	
5	H	5	

Continued on next page...

Continued from previous page...

Mol	Chain	Length	Quality of chain
5	I	5	 100%
5	J	5	 100%
5	a	5	 100%
6	b	2	 100%
6	c	2	 100%
6	d	2	 100%

2 Entry composition

There are 13 unique types of molecules in this entry. The entry contains 15918 atoms, of which 0 are hydrogens and 0 are deuteriums.

In the tables below, the AltConf column contains the number of residues with at least one atom in alternate conformation and the Trace column contains the number of residues modelled with at most 2 atoms.

- Molecule 1 is a protein called Gamma-aminobutyric acid receptor subunit alpha-4.

Mol	Chain	Residues	Atoms					AltConf	Trace
1	A	335	Total	C	N	O	S	0	0
			2711	1769	435	485	22		

- Molecule 2 is a protein called Gamma-aminobutyric acid receptor subunit beta-3.

Mol	Chain	Residues	Atoms					AltConf	Trace
2	B	327	Total	C	N	O	S	5	0
			2724	1795	439	474	16		
2	C	327	Total	C	N	O	S	7	0
			2745	1807	443	479	16		
2	D	327	Total	C	N	O	S	2	0
			2709	1781	438	474	16		

- Molecule 3 is a protein called Gamma-aminobutyric acid receptor subunit delta.

Mol	Chain	Residues	Atoms					AltConf	Trace
3	E	323	Total	C	N	O	S	1	0
			2595	1687	426	469	13		

There are 20 discrepancies between the modelled and reference sequences:

Chain	Residue	Modelled	Actual	Comment	Reference
E	453	GLY	-	expression tag	UNP O14764
E	454	GLY	-	expression tag	UNP O14764
E	455	SER	-	expression tag	UNP O14764
E	456	GLY	-	expression tag	UNP O14764
E	457	GLY	-	expression tag	UNP O14764
E	458	SER	-	expression tag	UNP O14764
E	459	GLY	-	expression tag	UNP O14764
E	460	GLY	-	expression tag	UNP O14764
E	461	SER	-	expression tag	UNP O14764
E	462	GLY	-	expression tag	UNP O14764
E	463	LYS	-	expression tag	UNP O14764

Continued on next page...

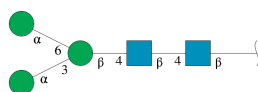
Continued from previous page...

Chain	Residue	Modelled	Actual	Comment	Reference
E	464	THR	-	expression tag	UNP O14764
E	465	GLU	-	expression tag	UNP O14764
E	466	THR	-	expression tag	UNP O14764
E	467	SER	-	expression tag	UNP O14764
E	468	GLN	-	expression tag	UNP O14764
E	469	VAL	-	expression tag	UNP O14764
E	470	ALA	-	expression tag	UNP O14764
E	471	PRO	-	expression tag	UNP O14764
E	472	ALA	-	expression tag	UNP O14764

- Molecule 4 is a protein called Nanobody Nb25.

Mol	Chain	Residues	Atoms					AltConf	Trace
4	F	121	Total	C	N	O	S	0	0
			940	593	161	182	4		
4	G	121	Total	C	N	O	S	0	0
			940	593	161	182	4		

- Molecule 5 is an oligosaccharide called alpha-D-mannopyranose-(1-3)-[alpha-D-mannopyranose-(1-6)]beta-D-mannopyranose-(1-4)-2-acetamido-2-deoxy-beta-D-glucopyranose-(1-4)-2-acetamido-2-deoxy-beta-D-glucopyranose.



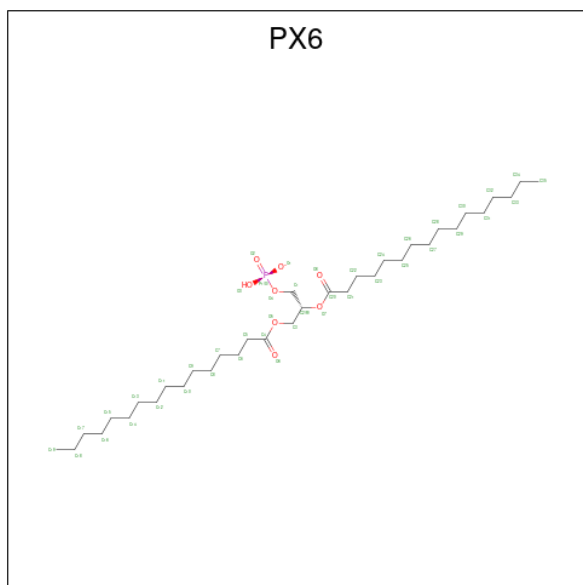
Mol	Chain	Residues	Atoms				AltConf	Trace
5	a	5	Total	C	N	O	0	0
			61	34	2	25		
5	H	5	Total	C	N	O	0	0
			61	34	2	25		
5	I	5	Total	C	N	O	0	0
			61	34	2	25		
5	J	5	Total	C	N	O	0	0
			61	34	2	25		

- Molecule 6 is an oligosaccharide called 2-acetamido-2-deoxy-beta-D-glucopyranose-(1-4)-2-acetamido-2-deoxy-beta-D-glucopyranose.



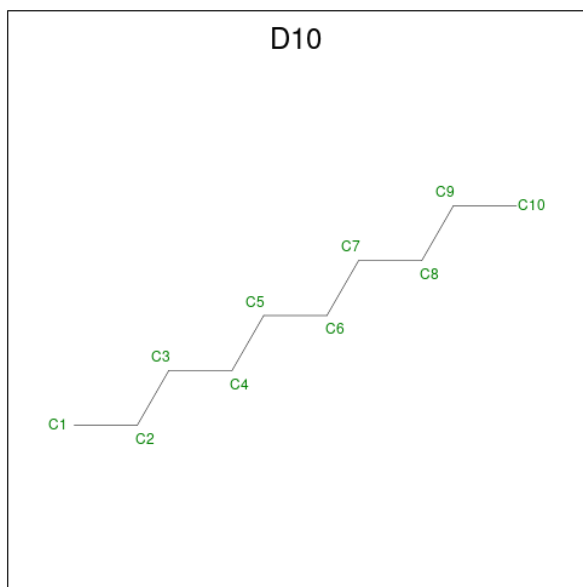
Mol	Chain	Residues	Atoms				AltConf	Trace
6	b	2	Total	C	N	O	0	0
			28	16	2	10		
6	c	2	Total	C	N	O	0	0
			28	16	2	10		
6	d	2	Total	C	N	O	0	0
			28	16	2	10		

- Molecule 7 is 1,2-DIPALMITOYL-SN-GLYCERO-3-PHOSPHATE (three-letter code: PX6) (formula: $C_{35}H_{68}O_8P$).



Mol	Chain	Residues	Atoms				AltConf
7	A	1	Total	C	O	P	0
			44	35	8	1	

- Molecule 8 is DECANE (three-letter code: D10) (formula: $C_{10}H_{22}$).



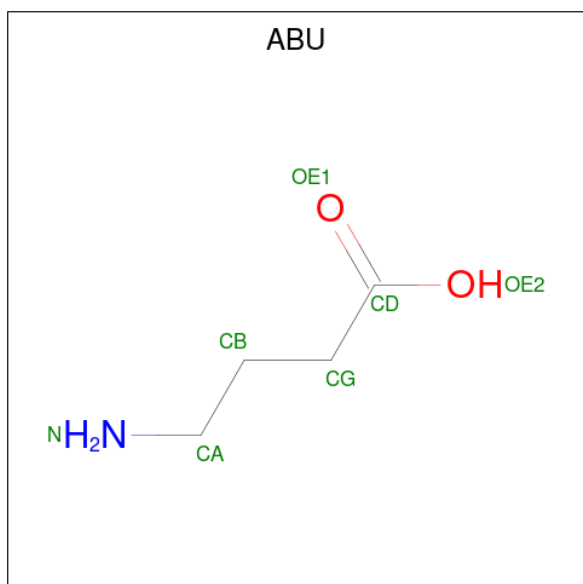
Mol	Chain	Residues	Atoms	AltConf
8	A	1	Total C 10 10	0
8	B	1	Total C 10 10	0
8	D	1	Total C 10 10	0
8	E	1	Total C 10 10	0

- Molecule 9 is 2-acetamido-2-deoxy-beta-D-glucopyranose (three-letter code: NAG) (formula: $C_8H_{15}NO_6$).



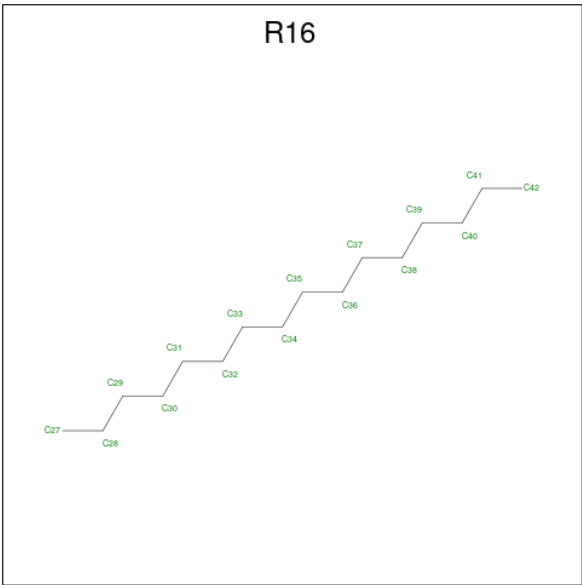
Mol	Chain	Residues	Atoms				AltConf
9	A	1	Total	C	N	O	0
			14	8	1	5	
9	B	1	Total	C	N	O	0
			14	8	1	5	
9	C	1	Total	C	N	O	0
			14	8	1	5	
9	D	1	Total	C	N	O	0
			14	8	1	5	
9	E	1	Total	C	N	O	0
			28	16	2	10	
9	E	1	Total	C	N	O	0
			28	16	2	10	

- Molecule 10 is GAMMA-AMINO-BUTANOIC ACID (three-letter code: ABU) (formula: $C_4H_9NO_2$) (labeled as "Ligand of Interest" by depositor).



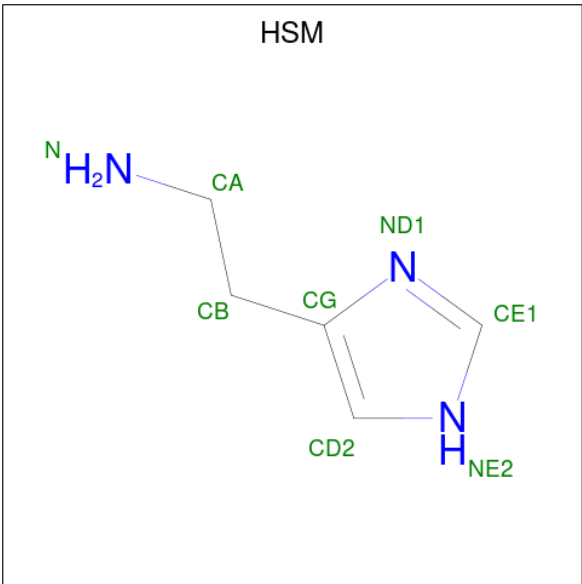
Mol	Chain	Residues	Atoms				AltConf
10	B	1	Total	C	N	O	0
			7	4	1	2	

- Molecule 11 is HEXADECANE (three-letter code: R16) (formula: $C_{16}H_{34}$).



Mol	Chain	Residues	Atoms		AltConf
11	B	1	Total	C	0
			16	16	
11	C	1	Total	C	0
			16	16	

- Molecule 12 is HISTAMINE (three-letter code: HSM) (formula: C₅H₉N₃) (labeled as "Ligand of Interest" by depositor).



Mol	Chain	Residues	Atoms			AltConf
12	C	1	Total	C	N	0
			8	5	3	

Continued on next page...

Continued from previous page...

Mol	Chain	Residues	Atoms			AltConf
12	D	1	Total	C	N	0
			8	5	3	

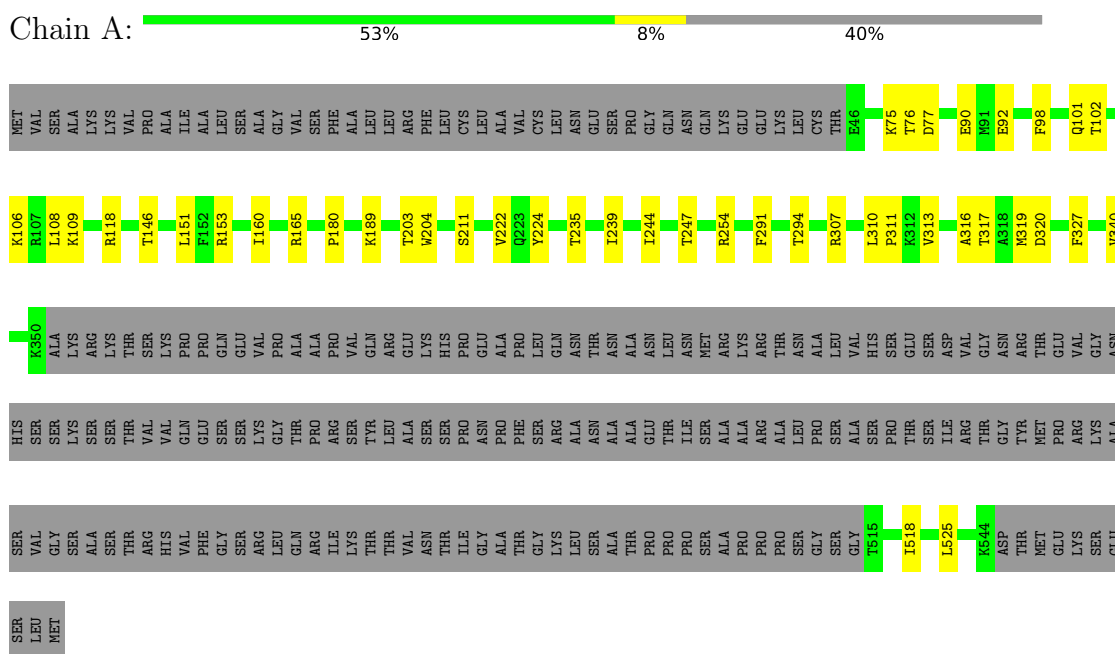
- Molecule 13 is water.

Mol	Chain	Residues	Atoms		AltConf
13	A	3	Total	O	0
			3	3	

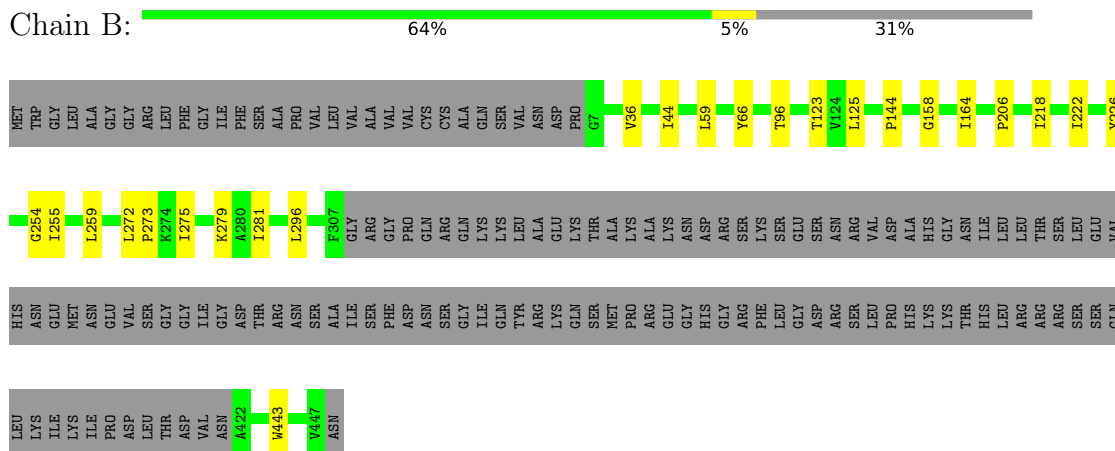
3 Residue-property plots

These plots are drawn for all protein, RNA, DNA and oligosaccharide chains in the entry. The first graphic for a chain summarises the proportions of the various outlier classes displayed in the second graphic. The second graphic shows the sequence view annotated by issues in geometry and atom inclusion in map density. Residues are color-coded according to the number of geometric quality criteria for which they contain at least one outlier: green = 0, yellow = 1, orange = 2 and red = 3 or more. A red diamond above a residue indicates a poor fit to the EM map for this residue (all-atom inclusion < 40%). Stretches of 2 or more consecutive residues without any outlier are shown as a green connector. Residues present in the sample, but not in the model, are shown in grey.

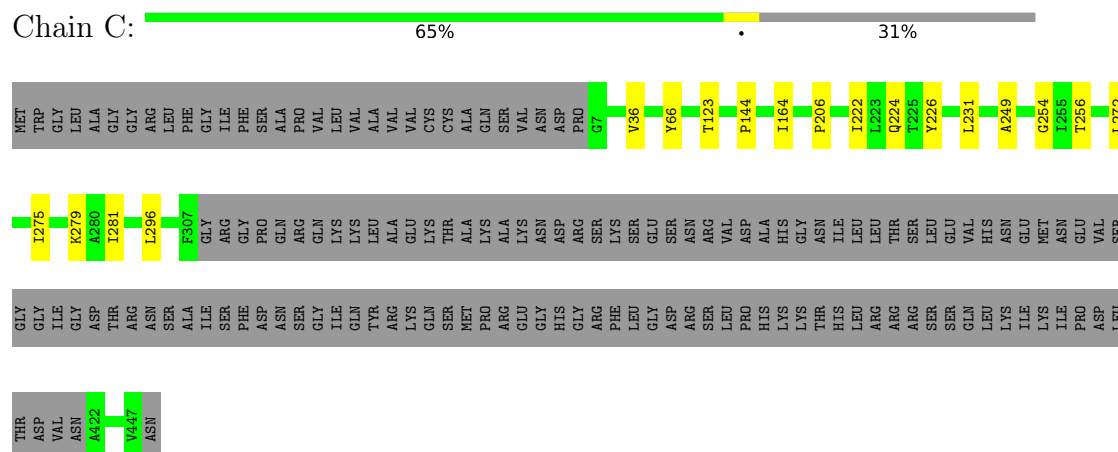
• Molecule 1: Gamma-aminobutyric acid receptor subunit alpha-4



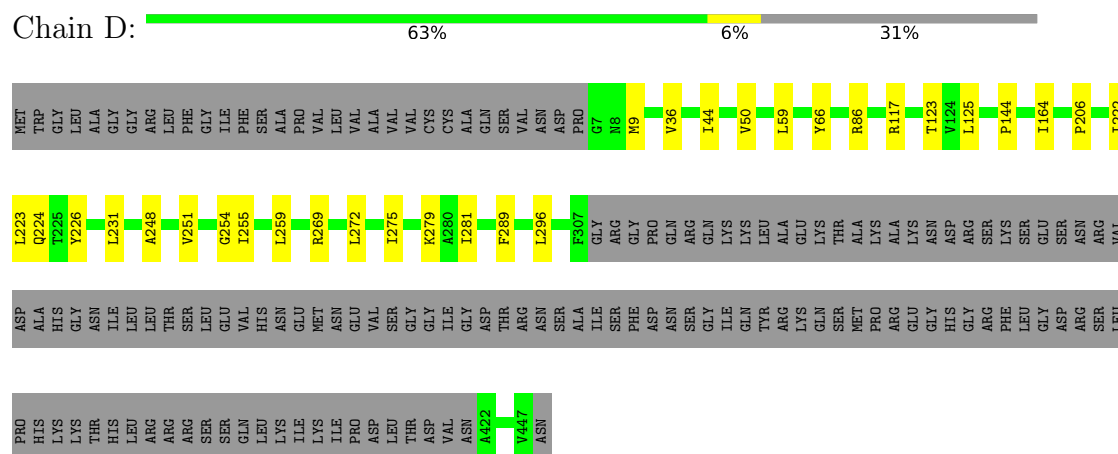
• Molecule 2: Gamma-aminobutyric acid receptor subunit beta-3



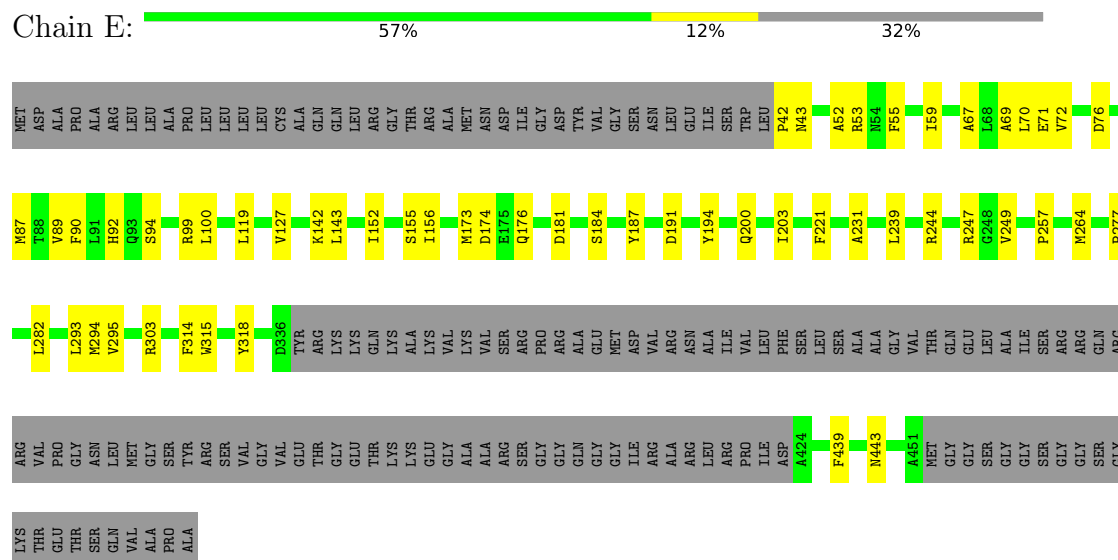
- Molecule 2: Gamma-aminobutyric acid receptor subunit beta-3



- Molecule 2: Gamma-aminobutyric acid receptor subunit beta-3



- Molecule 3: Gamma-aminobutyric acid receptor subunit delta



- Molecule 4: Nanobody Nb25

Chain F:  93% 7%



- Molecule 4: Nanobody Nb25

Chain G:  93% 7%



- Molecule 5: alpha-D-mannopyranose-(1-3)-[alpha-D-mannopyranose-(1-6)]beta-D-mannopyranose-(1-4)-2-acetamido-2-deoxy-beta-D-glucopyranose-(1-4)-2-acetamido-2-deoxy-beta-D-glucopyranose

Chain a:  100%



- Molecule 5: alpha-D-mannopyranose-(1-3)-[alpha-D-mannopyranose-(1-6)]beta-D-mannopyranose-(1-4)-2-acetamido-2-deoxy-beta-D-glucopyranose-(1-4)-2-acetamido-2-deoxy-beta-D-glucopyranose

Chain H:  100%



- Molecule 5: alpha-D-mannopyranose-(1-3)-[alpha-D-mannopyranose-(1-6)]beta-D-mannopyranose-(1-4)-2-acetamido-2-deoxy-beta-D-glucopyranose-(1-4)-2-acetamido-2-deoxy-beta-D-glucopyranose

Chain I:  100%



- Molecule 5: alpha-D-mannopyranose-(1-3)-[alpha-D-mannopyranose-(1-6)]beta-D-mannopyranose-(1-4)-2-acetamido-2-deoxy-beta-D-glucopyranose-(1-4)-2-acetamido-2-deoxy-beta-D-glucopyranose

Chain J:  100%



- Molecule 6: 2-acetamido-2-deoxy-beta-D-glucopyranose-(1-4)-2-acetamido-2-deoxy-beta-D-glucopyranose

Chain b:  100%

MAP1
MAP2

- Molecule 6: 2-acetamido-2-deoxy-beta-D-glucopyranose-(1-4)-2-acetamido-2-deoxy-beta-D-glucopyranose

Chain c:  100%

MAP1
MAP2

- Molecule 6: 2-acetamido-2-deoxy-beta-D-glucopyranose-(1-4)-2-acetamido-2-deoxy-beta-D-glucopyranose

Chain d:  100%

MAP1
MAP2

4 Experimental information

Property	Value	Source
EM reconstruction method	SINGLE PARTICLE	Depositor
Imposed symmetry	POINT, Not provided	
Number of particles used	37979	Depositor
Resolution determination method	FSC 0.143 CUT-OFF	Depositor
CTF correction method	PHASE FLIPPING AND AMPLITUDE CORRECTION	Depositor
Microscope	FEI TITAN KRIOS	Depositor
Voltage (kV)	300	Depositor
Electron dose ($e^-/\text{\AA}^2$)	40	Depositor
Minimum defocus (nm)	700	Depositor
Maximum defocus (nm)	2100	Depositor
Magnification	130000	Depositor
Image detector	GATAN K3 (6k x 4k)	Depositor
Maximum map value	0.101	Depositor
Minimum map value	-0.034	Depositor
Average map value	0.000	Depositor
Map value standard deviation	0.003	Depositor
Recommended contour level	0.008	Depositor
Map size (\AA)	259.84, 259.84, 259.84	wwPDB
Map dimensions	290, 290, 290	wwPDB
Map angles ($^\circ$)	90.0, 90.0, 90.0	wwPDB
Pixel spacing (\AA)	0.89599997, 0.89599997, 0.89599997	Depositor

5 Model quality

5.1 Standard geometry

Bond lengths and bond angles in the following residue types are not validated in this section: R16, NAG, D10, BMA, ABU, HSM, PX6, MAN

The Z score for a bond length (or angle) is the number of standard deviations the observed value is removed from the expected value. A bond length (or angle) with $|Z| > 5$ is considered an outlier worth inspection. RMSZ is the root-mean-square of all Z scores of the bond lengths (or angles).

Mol	Chain	Bond lengths		Bond angles	
		RMSZ	# Z >5	RMSZ	# Z >5
1	A	0.25	0/2782	0.44	0/3772
2	B	0.26	0/2811	0.48	0/3825
2	C	0.26	0/2826	0.49	0/3845
2	D	0.25	0/2787	0.49	0/3793
3	E	0.24	0/2671	0.44	0/3643
4	F	0.25	0/963	0.49	0/1304
4	G	0.25	0/963	0.49	0/1304
All	All	0.25	0/15803	0.47	0/21486

There are no bond length outliers.

There are no bond angle outliers.

There are no chirality outliers.

There are no planarity outliers.

5.2 Too-close contacts

In the following table, the Non-H and H(model) columns list the number of non-hydrogen atoms and hydrogen atoms in the chain respectively. The H(added) column lists the number of hydrogen atoms added and optimized by MolProbity. The Clashes column lists the number of clashes within the asymmetric unit, whereas Symm-Clashes lists symmetry-related clashes.

Mol	Chain	Non-H	H(model)	H(added)	Clashes	Symm-Clashes
1	A	2711	0	2722	29	0
2	B	2724	0	2729	17	0
2	C	2745	0	2743	14	0
2	D	2709	0	2696	24	0
3	E	2595	0	2532	37	0
4	F	940	0	887	4	0

Continued on next page...

Continued from previous page...

Mol	Chain	Non-H	H(model)	H(added)	Clashes	Symm-Clashes
4	G	940	0	887	4	0
5	H	61	0	52	0	0
5	I	61	0	52	0	0
5	J	61	0	52	0	0
5	a	61	0	52	0	0
6	b	28	0	25	0	0
6	c	28	0	25	0	0
6	d	28	0	25	0	0
7	A	44	0	68	1	0
8	A	10	0	22	0	0
8	B	10	0	22	1	0
8	D	10	0	22	0	0
8	E	10	0	22	0	0
9	A	14	0	13	0	0
9	B	14	0	13	0	0
9	C	14	0	13	0	0
9	D	14	0	13	0	0
9	E	28	0	26	0	0
10	B	7	0	5	0	0
11	B	16	0	34	3	0
11	C	16	0	34	0	0
12	C	8	0	9	0	0
12	D	8	0	9	0	0
13	A	3	0	0	0	0
All	All	15918	0	15804	108	0

The all-atom clashscore is defined as the number of clashes found per 1000 atoms (including hydrogen atoms). The all-atom clashscore for this structure is 3.

The worst 5 of 108 close contacts within the same asymmetric unit are listed below, sorted by their clash magnitude.

Atom-1	Atom-2	Interatomic distance (Å)	Clash overlap (Å)
2:C:272:LEU:HD13	2:C:279:LYS:HE2	1.79	0.65
2:B:272:LEU:HD13	2:B:279:LYS:HE2	1.79	0.65
3:E:52:ALA:O	3:E:99:ARG:NH1	2.31	0.63
3:E:257:PRO:HB2	3:E:293:LEU:HD21	1.80	0.63
2:D:272:LEU:HD13	2:D:279:LYS:HE2	1.79	0.63

There are no symmetry-related clashes.

5.3 Torsion angles

5.3.1 Protein backbone

In the following table, the Percentiles column shows the percent Ramachandran outliers of the chain as a percentile score with respect to all PDB entries followed by that with respect to all EM entries.

The Analysed column shows the number of residues for which the backbone conformation was analysed, and the total number of residues.

Mol	Chain	Analysed	Favoured	Allowed	Outliers	Percentiles	
1	A	331/554 (60%)	326 (98%)	5 (2%)	0	100	100
2	B	328/473 (69%)	324 (99%)	4 (1%)	0	100	100
2	C	330/473 (70%)	326 (99%)	4 (1%)	0	100	100
2	D	325/473 (69%)	321 (99%)	4 (1%)	0	100	100
3	E	320/472 (68%)	317 (99%)	3 (1%)	0	100	100
4	F	117/121 (97%)	111 (95%)	6 (5%)	0	100	100
4	G	117/121 (97%)	111 (95%)	6 (5%)	0	100	100
All	All	1868/2687 (70%)	1836 (98%)	32 (2%)	0	100	100

There are no Ramachandran outliers to report.

5.3.2 Protein sidechains

In the following table, the Percentiles column shows the percent sidechain outliers of the chain as a percentile score with respect to all PDB entries followed by that with respect to all EM entries.

The Analysed column shows the number of residues for which the sidechain conformation was analysed, and the total number of residues.

Mol	Chain	Analysed	Rotameric	Outliers	Percentiles	
1	A	304/486 (63%)	302 (99%)	2 (1%)	84	94
2	B	299/417 (72%)	299 (100%)	0	100	100
2	C	301/417 (72%)	301 (100%)	0	100	100
2	D	296/417 (71%)	296 (100%)	0	100	100
3	E	277/389 (71%)	277 (100%)	0	100	100
4	F	97/97 (100%)	95 (98%)	2 (2%)	53	82
4	G	97/97 (100%)	95 (98%)	2 (2%)	53	82

Continued on next page...

Continued from previous page...

Mol	Chain	Analysed	Rotameric	Outliers	Percentiles	
All	All	1671/2320 (72%)	1665 (100%)	6 (0%)	91	97

5 of 6 residues with a non-rotameric sidechain are listed below:

Mol	Chain	Res	Type
4	F	459	ARG
4	G	445	THR
4	G	459	ARG
1	A	327	PHE
1	A	291	PHE

Sometimes sidechains can be flipped to improve hydrogen bonding and reduce clashes. 5 of 7 such sidechains are listed below:

Mol	Chain	Res	Type
2	D	64	GLN
3	E	43	ASN
3	E	213	GLN
3	E	141	ASN
2	C	64	GLN

5.3.3 RNA ⓘ

There are no RNA molecules in this entry.

5.4 Non-standard residues in protein, DNA, RNA chains ⓘ

There are no non-standard protein/DNA/RNA residues in this entry.

5.5 Carbohydrates ⓘ

26 monosaccharides are modelled in this entry.

In the following table, the Counts columns list the number of bonds (or angles) for which Mogul statistics could be retrieved, the number of bonds (or angles) that are observed in the model and the number of bonds (or angles) that are defined in the Chemical Component Dictionary. The Link column lists molecule types, if any, to which the group is linked. The Z score for a bond length (or angle) is the number of standard deviations the observed value is removed from the expected value. A bond length (or angle) with $|Z| > 2$ is considered an outlier worth inspection. RMSZ is the root-mean-square of all Z scores of the bond lengths (or angles).

Mol	Type	Chain	Res	Link	Bond lengths			Bond angles		
					Counts	RMSZ	# Z > 2	Counts	RMSZ	# Z > 2
5	NAG	H	1	2,5	14,14,15	0.24	0	17,19,21	0.41	0
5	NAG	H	2	5	14,14,15	0.24	0	17,19,21	0.48	0
5	BMA	H	3	5	11,11,12	0.61	0	15,15,17	0.76	0
5	MAN	H	4	5	11,11,12	0.21	0	15,15,17	0.25	0
5	MAN	H	5	5	11,11,12	0.19	0	15,15,17	0.26	0
5	NAG	I	1	2,5	14,14,15	0.23	0	17,19,21	0.41	0
5	NAG	I	2	5	14,14,15	0.23	0	17,19,21	0.47	0
5	BMA	I	3	5	11,11,12	0.62	0	15,15,17	0.78	0
5	MAN	I	4	5	11,11,12	0.20	0	15,15,17	0.26	0
5	MAN	I	5	5	11,11,12	0.21	0	15,15,17	0.25	0
5	NAG	J	1	2,5	14,14,15	0.24	0	17,19,21	0.41	0
5	NAG	J	2	5	14,14,15	0.23	0	17,19,21	0.46	0
5	BMA	J	3	5	11,11,12	0.62	0	15,15,17	0.78	0
5	MAN	J	4	5	11,11,12	0.20	0	15,15,17	0.24	0
5	MAN	J	5	5	11,11,12	0.21	0	15,15,17	0.25	0
5	NAG	a	1	1,5	14,14,15	0.25	0	17,19,21	0.40	0
5	NAG	a	2	5	14,14,15	0.23	0	17,19,21	0.41	0
5	BMA	a	3	5	11,11,12	0.60	0	15,15,17	0.82	0
5	MAN	a	4	5	11,11,12	0.21	0	15,15,17	0.23	0
5	MAN	a	5	5	11,11,12	0.21	0	15,15,17	0.24	0
6	NAG	b	1	2,6	14,14,15	0.24	0	17,19,21	0.41	0
6	NAG	b	2	6	14,14,15	0.23	0	17,19,21	0.42	0
6	NAG	c	1	2,6	14,14,15	0.24	0	17,19,21	0.41	0
6	NAG	c	2	6	14,14,15	0.23	0	17,19,21	0.41	0
6	NAG	d	1	2,6	14,14,15	0.24	0	17,19,21	0.42	0
6	NAG	d	2	6	14,14,15	0.23	0	17,19,21	0.42	0

In the following table, the Chirals column lists the number of chiral outliers, the number of chiral centers analysed, the number of these observed in the model and the number defined in the Chemical Component Dictionary. Similar counts are reported in the Torsion and Rings columns. '-' means no outliers of that kind were identified.

Mol	Type	Chain	Res	Link	Chirals	Torsions	Rings
5	NAG	H	1	2,5	-	0/6/23/26	0/1/1/1
5	NAG	H	2	5	-	0/6/23/26	0/1/1/1
5	BMA	H	3	5	-	1/2/19/22	0/1/1/1
5	MAN	H	4	5	-	0/2/19/22	0/1/1/1
5	MAN	H	5	5	-	0/2/19/22	0/1/1/1
5	NAG	I	1	2,5	-	0/6/23/26	0/1/1/1
5	NAG	I	2	5	-	0/6/23/26	0/1/1/1
5	BMA	I	3	5	-	1/2/19/22	0/1/1/1
5	MAN	I	4	5	-	0/2/19/22	0/1/1/1
5	MAN	I	5	5	-	0/2/19/22	0/1/1/1

Continued on next page...

Continued from previous page...

Mol	Type	Chain	Res	Link	Chirals	Torsions	Rings
5	NAG	J	1	2,5	-	0/6/23/26	0/1/1/1
5	NAG	J	2	5	-	0/6/23/26	0/1/1/1
5	BMA	J	3	5	-	1/2/19/22	0/1/1/1
5	MAN	J	4	5	-	0/2/19/22	0/1/1/1
5	MAN	J	5	5	-	0/2/19/22	0/1/1/1
5	NAG	a	1	1,5	-	0/6/23/26	0/1/1/1
5	NAG	a	2	5	-	0/6/23/26	0/1/1/1
5	BMA	a	3	5	-	0/2/19/22	0/1/1/1
5	MAN	a	4	5	-	0/2/19/22	0/1/1/1
5	MAN	a	5	5	-	0/2/19/22	0/1/1/1
6	NAG	b	1	2,6	-	0/6/23/26	0/1/1/1
6	NAG	b	2	6	-	0/6/23/26	0/1/1/1
6	NAG	c	1	2,6	-	0/6/23/26	0/1/1/1
6	NAG	c	2	6	-	0/6/23/26	0/1/1/1
6	NAG	d	1	2,6	-	0/6/23/26	0/1/1/1
6	NAG	d	2	6	-	0/6/23/26	0/1/1/1

There are no bond length outliers.

There are no bond angle outliers.

There are no chirality outliers.

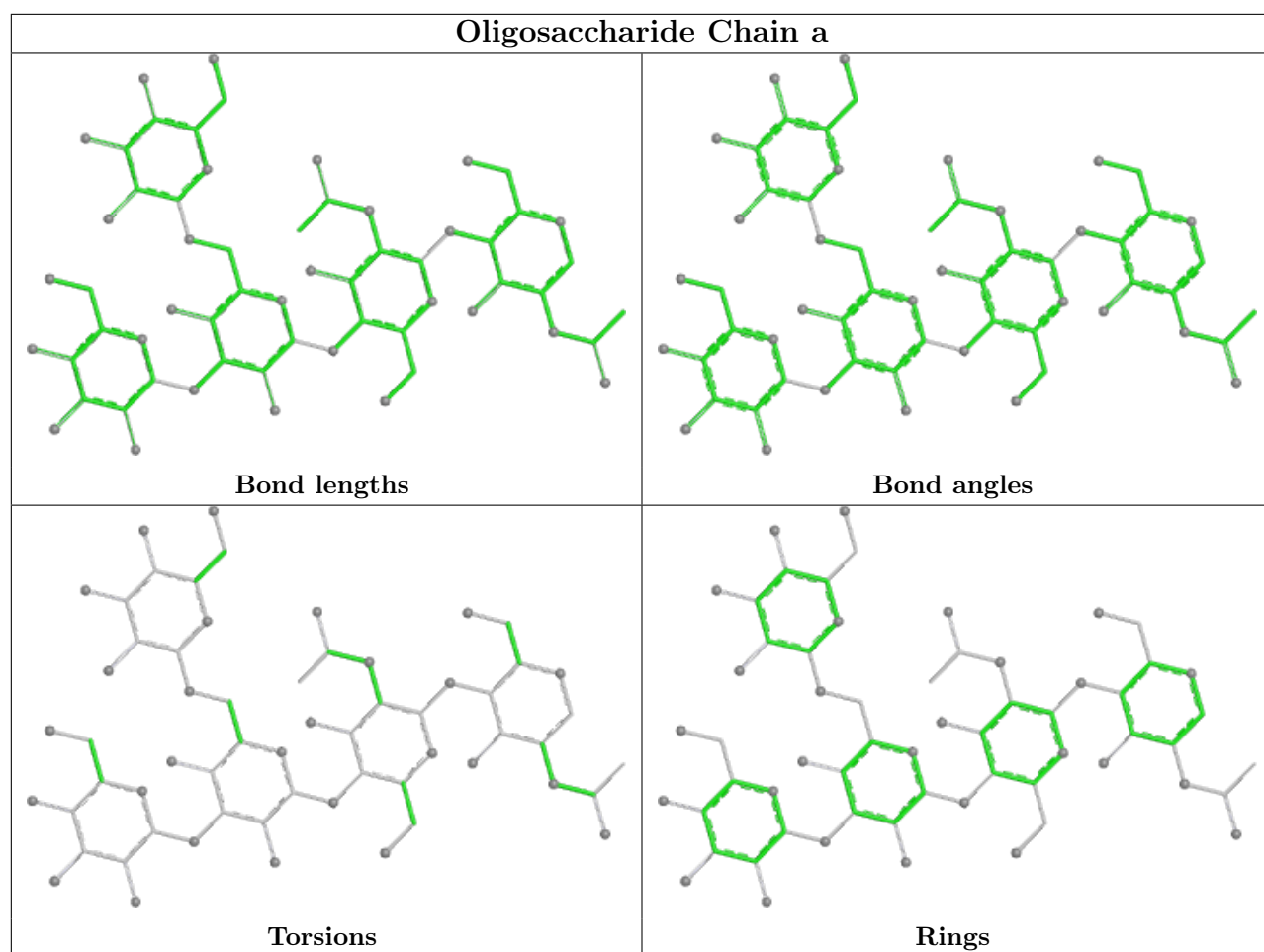
All (3) torsion outliers are listed below:

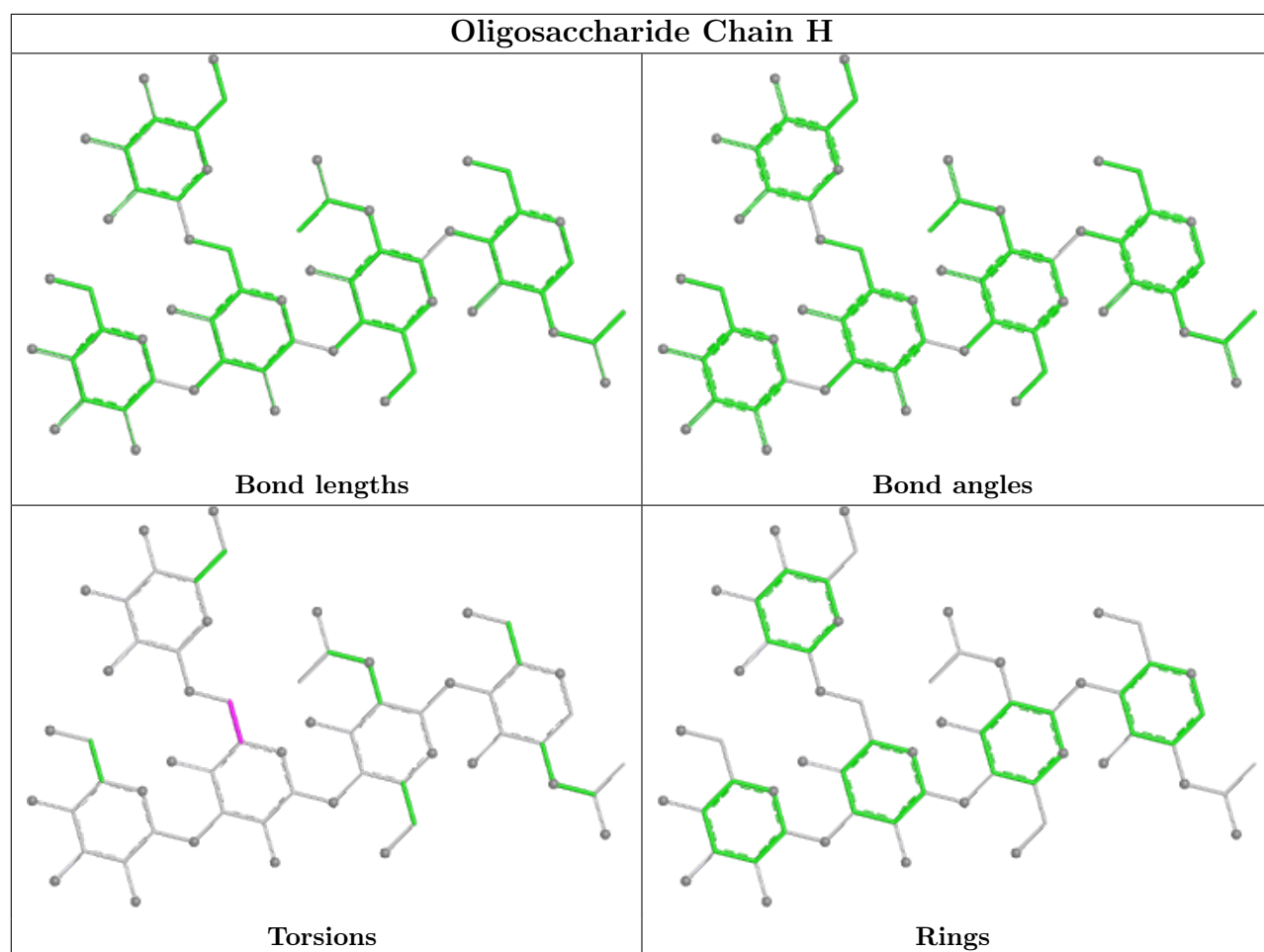
Mol	Chain	Res	Type	Atoms
5	H	3	BMA	C4-C5-C6-O6
5	J	3	BMA	C4-C5-C6-O6
5	I	3	BMA	C4-C5-C6-O6

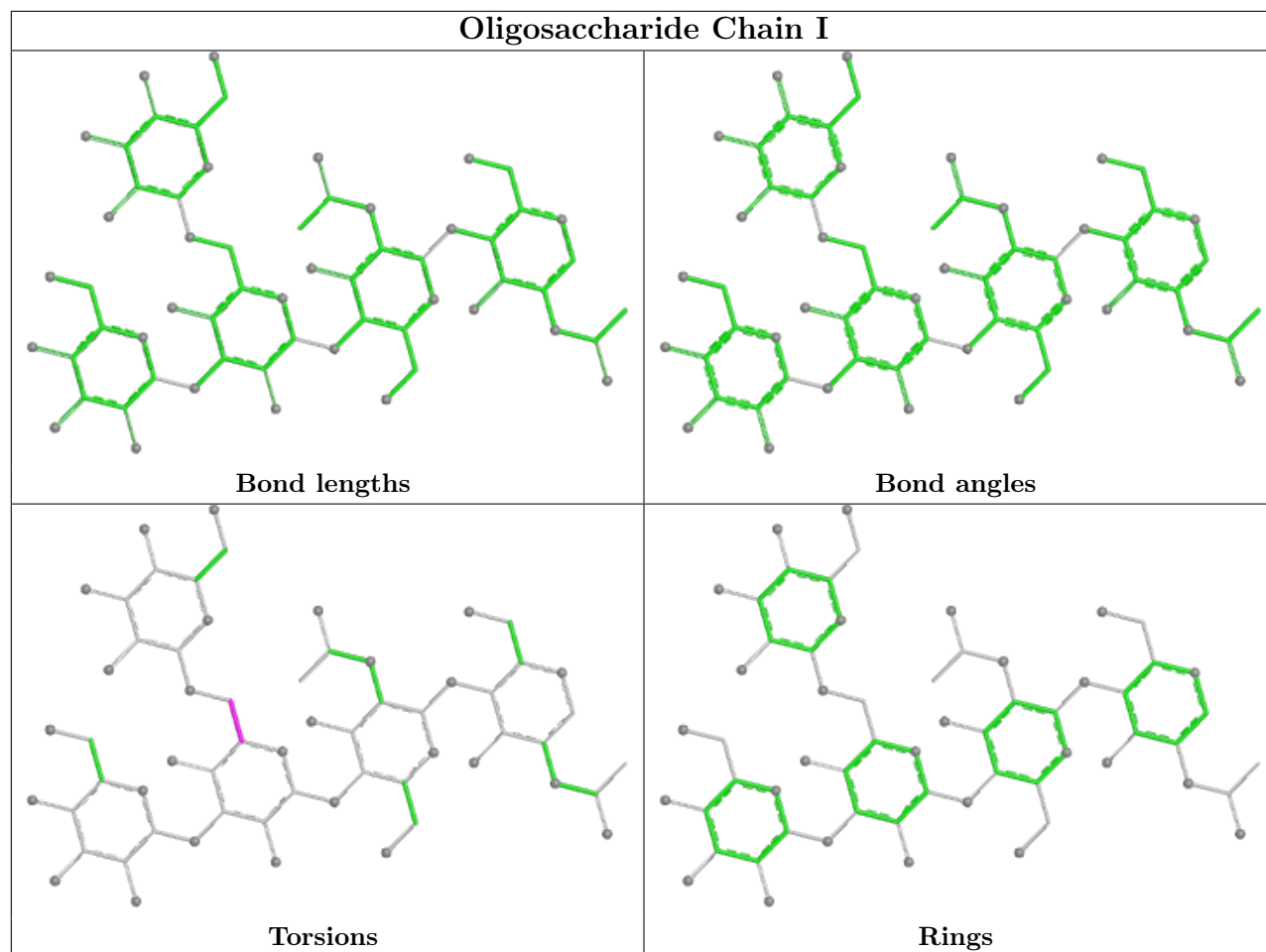
There are no ring outliers.

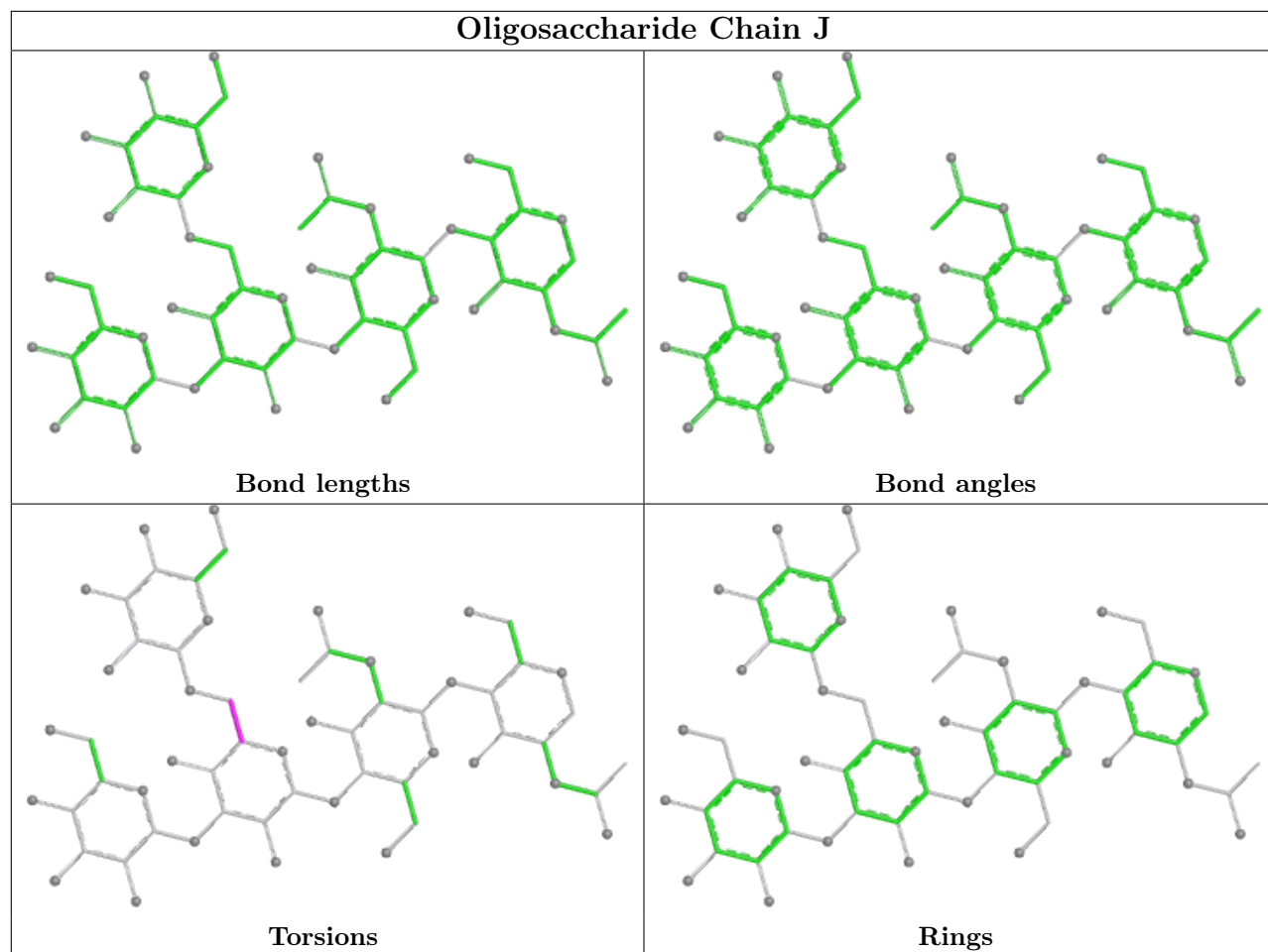
No monomer is involved in short contacts.

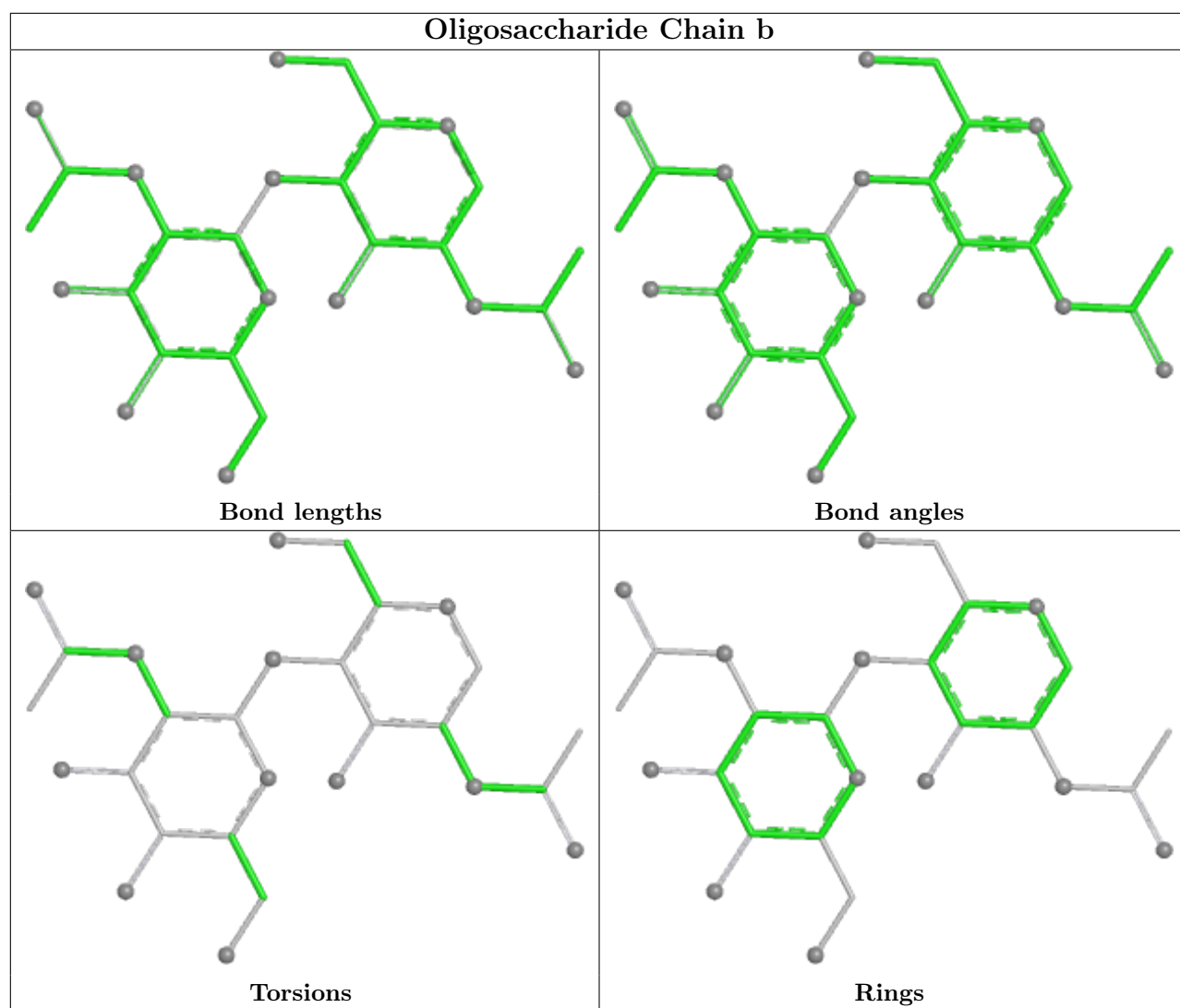
The following is a two-dimensional graphical depiction of Mogul quality analysis of bond lengths, bond angles, torsion angles, and ring geometry for oligosaccharide.

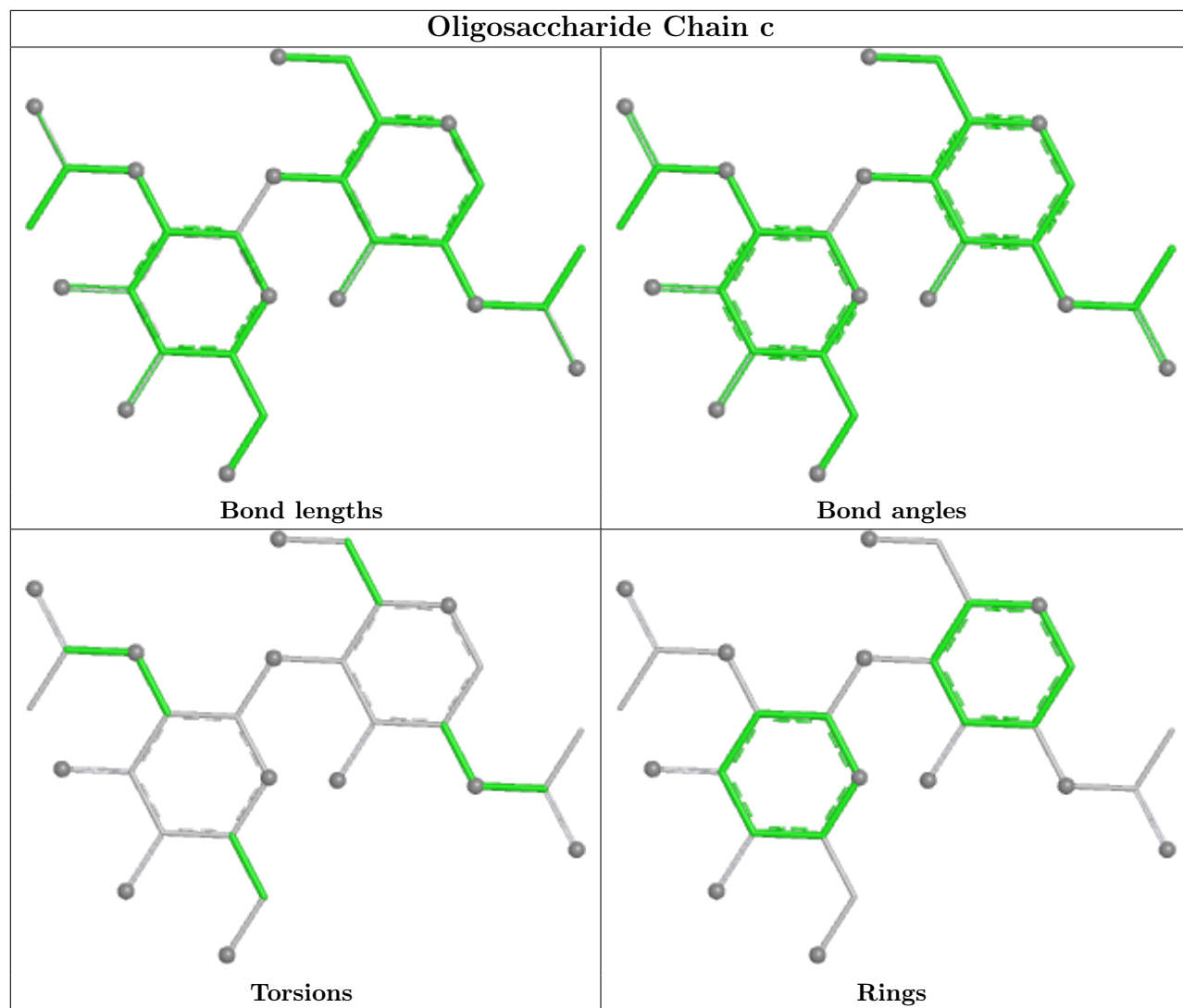


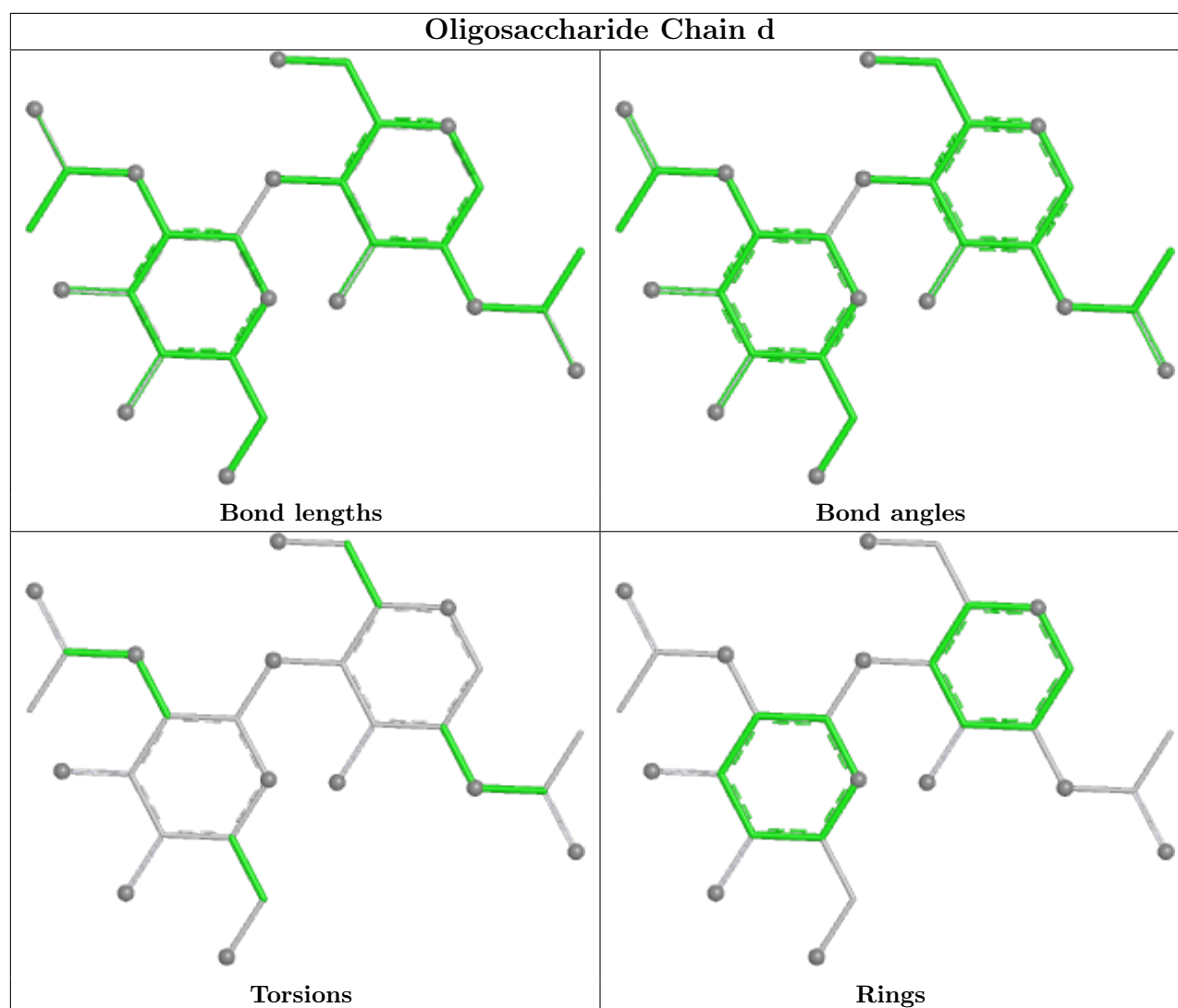












5.6 Ligand geometry [i](#)

16 ligands are modelled in this entry.

In the following table, the Counts columns list the number of bonds (or angles) for which Mogul statistics could be retrieved, the number of bonds (or angles) that are observed in the model and the number of bonds (or angles) that are defined in the Chemical Component Dictionary. The Link column lists molecule types, if any, to which the group is linked. The Z score for a bond length (or angle) is the number of standard deviations the observed value is removed from the expected value. A bond length (or angle) with $|Z| > 2$ is considered an outlier worth inspection. RMSZ is the root-mean-square of all Z scores of the bond lengths (or angles).

Mol	Type	Chain	Res	Link	Bond lengths			Bond angles		
					Counts	RMSZ	$\# Z > 2$	Counts	RMSZ	$\# Z > 2$
9	NAG	E	503	3	14,14,15	0.22	0	17,19,21	0.42	0
10	ABU	B	501	-	3,6,6	0.11	0	2,6,6	0.04	0
11	R16	C	501	-	15,15,15	0.14	0	14,14,14	0.11	0

Mol	Type	Chain	Res	Link	Bond lengths			Bond angles		
					Counts	RMSZ	# Z > 2	Counts	RMSZ	# Z > 2
9	NAG	E	502	3	14,14,15	0.23	0	17,19,21	0.42	0
12	HSM	C	503	-	3,8,8	0.42	0	3,9,9	0.86	0
12	HSM	D	503	-	3,8,8	0.40	0	3,9,9	0.86	0
9	NAG	C	502	2	14,14,15	0.23	0	17,19,21	0.43	0
7	PX6	A	601	-	43,43,43	0.28	0	47,48,48	0.30	0
8	D10	A	602	-	9,9,9	0.13	0	8,8,8	0.11	0
8	D10	B	503	-	9,9,9	0.14	0	8,8,8	0.11	0
11	R16	B	502	-	15,15,15	0.13	0	14,14,14	0.11	0
8	D10	E	501	-	9,9,9	0.14	0	8,8,8	0.10	0
9	NAG	B	504	2	14,14,15	0.23	0	17,19,21	0.44	0
9	NAG	A	603	1	14,14,15	0.23	0	17,19,21	0.48	0
9	NAG	D	502	2	14,14,15	0.23	0	17,19,21	0.44	0
8	D10	D	501	-	9,9,9	0.15	0	8,8,8	0.11	0

In the following table, the Chirals column lists the number of chiral outliers, the number of chiral centers analysed, the number of these observed in the model and the number defined in the Chemical Component Dictionary. Similar counts are reported in the Torsion and Rings columns. '-' means no outliers of that kind were identified.

Mol	Type	Chain	Res	Link	Chirals	Torsions	Rings
9	NAG	E	503	3	-	0/6/23/26	0/1/1/1
10	ABU	B	501	-	-	0/2/4/4	-
11	R16	C	501	-	-	0/13/13/13	-
9	NAG	E	502	3	-	0/6/23/26	0/1/1/1
12	HSM	C	503	-	-	0/2/3/3	0/1/1/1
12	HSM	D	503	-	-	0/2/3/3	0/1/1/1
9	NAG	C	502	2	-	0/6/23/26	0/1/1/1
7	PX6	A	601	-	-	7/45/45/45	-
8	D10	A	602	-	-	0/7/7/7	-
8	D10	B	503	-	-	0/7/7/7	-
11	R16	B	502	-	-	0/13/13/13	-
8	D10	E	501	-	-	0/7/7/7	-
9	NAG	B	504	2	-	0/6/23/26	0/1/1/1
9	NAG	A	603	1	-	1/6/23/26	0/1/1/1
9	NAG	D	502	2	-	0/6/23/26	0/1/1/1
8	D10	D	501	-	-	0/7/7/7	-

There are no bond length outliers.

There are no bond angle outliers.

There are no chirality outliers.

5 of 8 torsion outliers are listed below:

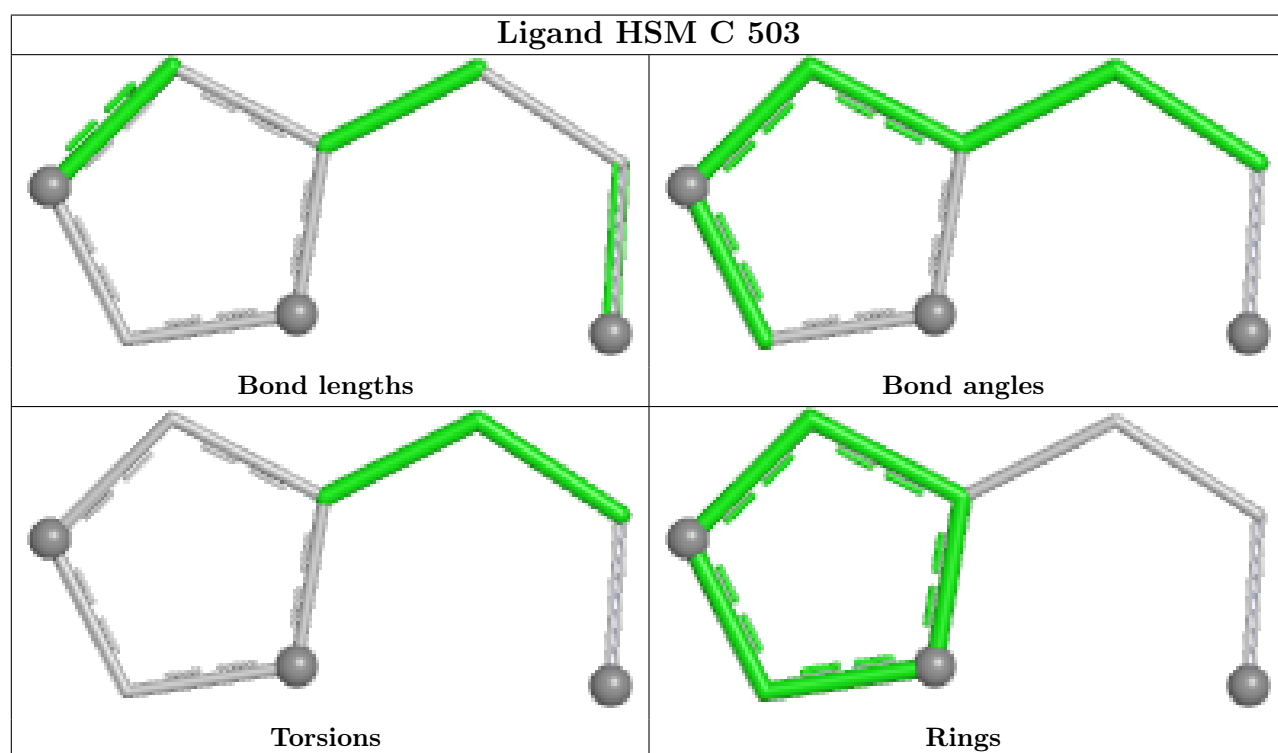
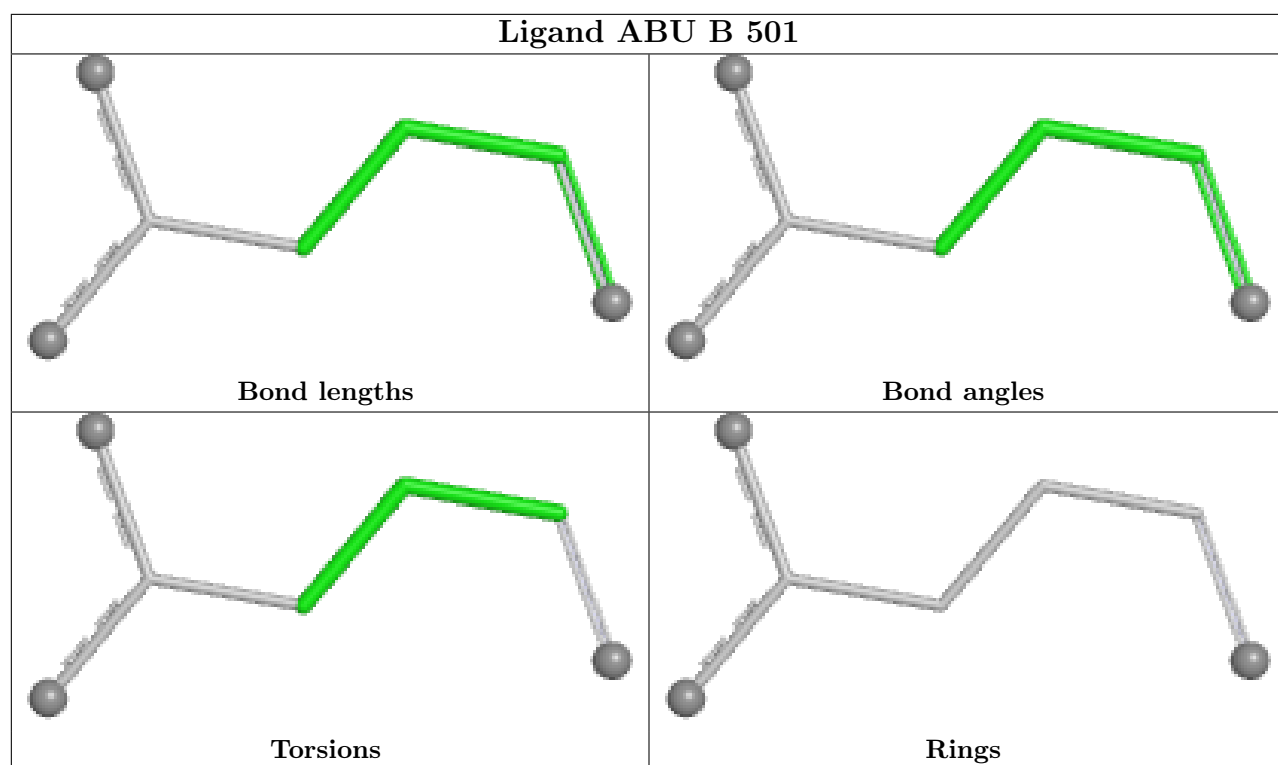
Mol	Chain	Res	Type	Atoms
7	A	601	PX6	C1-O4-P1-O1
7	A	601	PX6	C1-O4-P1-O2
7	A	601	PX6	C1-O4-P1-O3
9	A	603	NAG	O5-C5-C6-O6
7	A	601	PX6	O4-C1-C2-O7

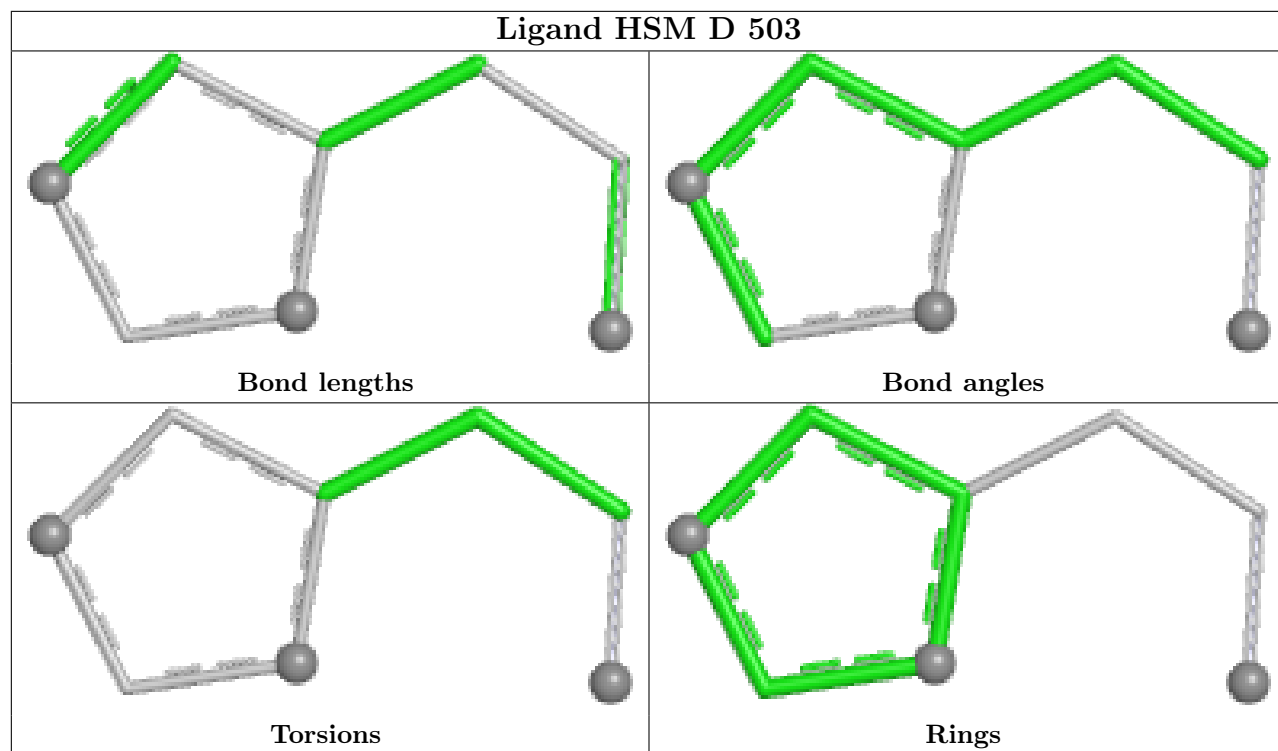
There are no ring outliers.

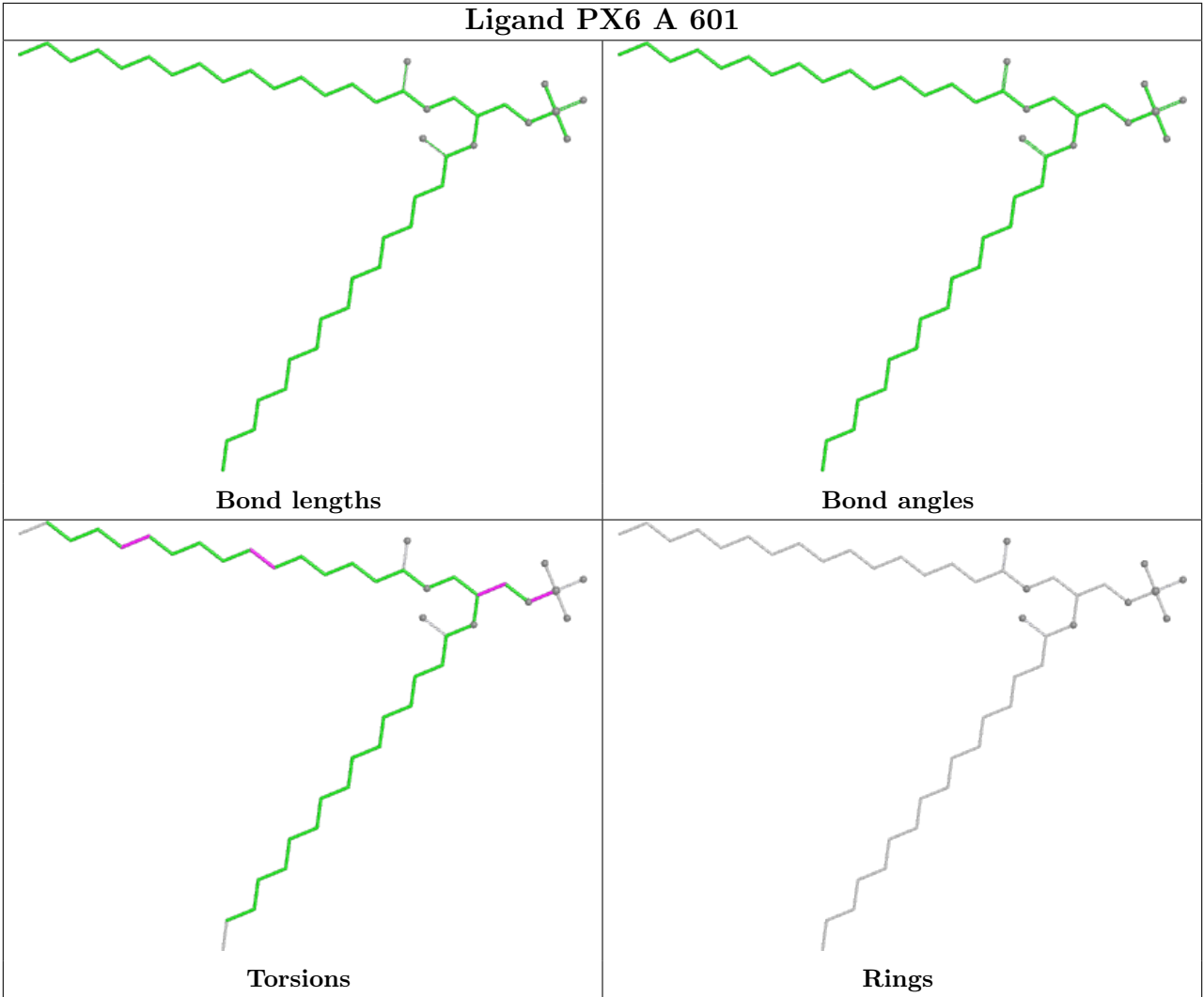
3 monomers are involved in 4 short contacts:

Mol	Chain	Res	Type	Clashes	Symm-Clashes
7	A	601	PX6	1	0
8	B	503	D10	1	0
11	B	502	R16	3	0

The following is a two-dimensional graphical depiction of Mogul quality analysis of bond lengths, bond angles, torsion angles, and ring geometry for all instances of the Ligand of Interest. In addition, ligands with molecular weight > 250 and outliers as shown on the validation Tables will also be included. For torsion angles, if less than 5% of the Mogul distribution of torsion angles is within 10 degrees of the torsion angle in question, then that torsion angle is considered an outlier. Any bond that is central to one or more torsion angles identified as an outlier by Mogul will be highlighted in the graph. For rings, the root-mean-square deviation (RMSD) between the ring in question and similar rings identified by Mogul is calculated over all ring torsion angles. If the average RMSD is greater than 60 degrees and the minimal RMSD between the ring in question and any Mogul-identified rings is also greater than 60 degrees, then that ring is considered an outlier. The outliers are highlighted in purple. The color gray indicates Mogul did not find sufficient equivalents in the CSD to analyse the geometry.







5.7 Other polymers ⓘ

There are no such residues in this entry.

5.8 Polymer linkage issues ⓘ

The following chains have linkage breaks:

Mol	Chain	Number of breaks
4	F	1
4	G	1

All chain breaks are listed below:

Model	Chain	Residue-1	Atom-1	Residue-2	Atom-2	Distance (Å)
1	F	13:GLN	C	403:GLY	N	5.42

Continued on next page...

Continued from previous page...

Model	Chain	Residue-1	Atom-1	Residue-2	Atom-2	Distance (Å)
1	G	13:GLN	C	403:GLY	N	5.42

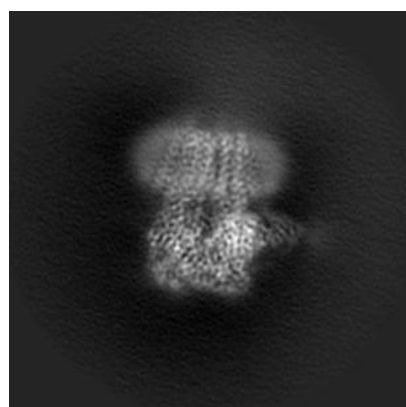
6 Map visualisation [i](#)

This section contains visualisations of the EMDB entry EMD-14069. These allow visual inspection of the internal detail of the map and identification of artifacts.

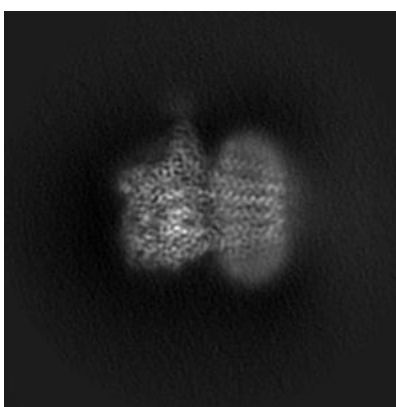
No raw map or half-maps were deposited for this entry and therefore no images, graphs, etc. pertaining to the raw map can be shown.

6.1 Orthogonal projections [i](#)

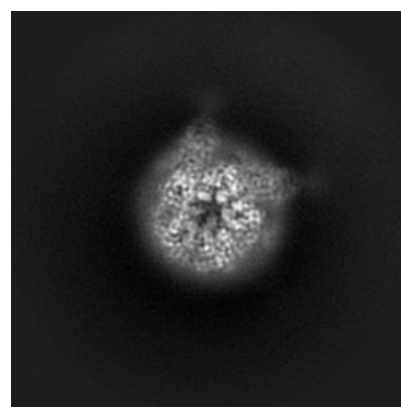
6.1.1 Primary map



X



Y

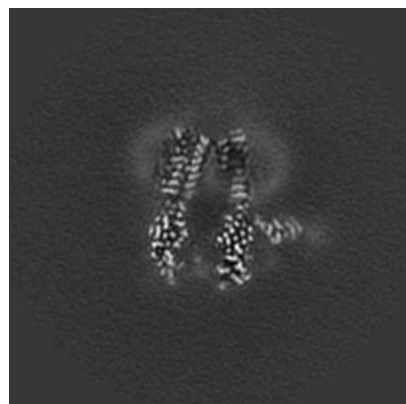


Z

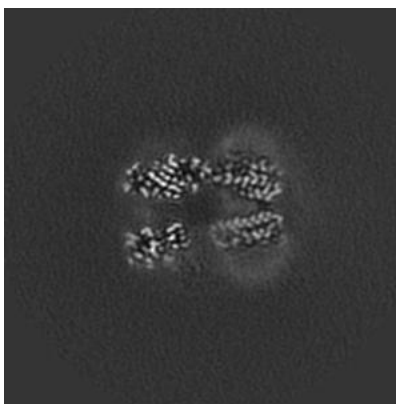
The images above show the map projected in three orthogonal directions.

6.2 Central slices [i](#)

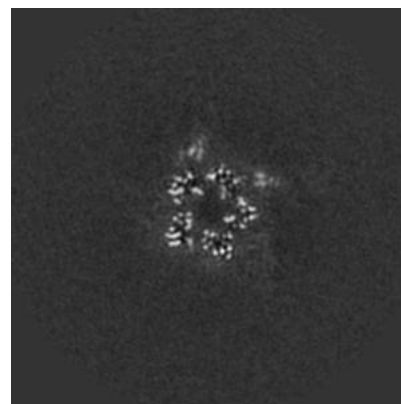
6.2.1 Primary map



X Index: 145



Y Index: 145

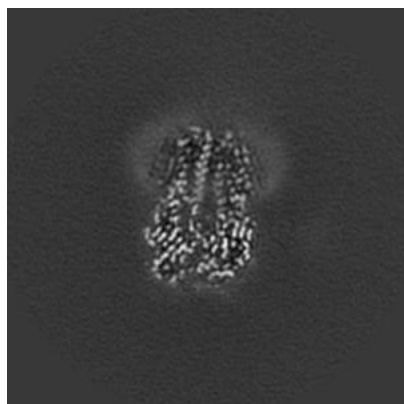


Z Index: 145

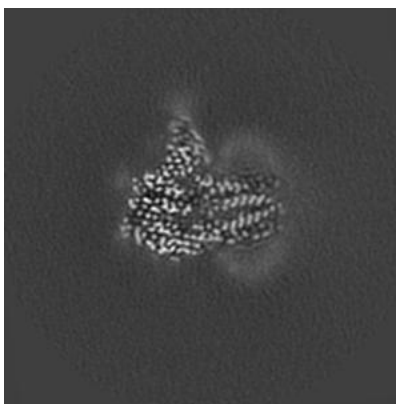
The images above show central slices of the map in three orthogonal directions.

6.3 Largest variance slices [i](#)

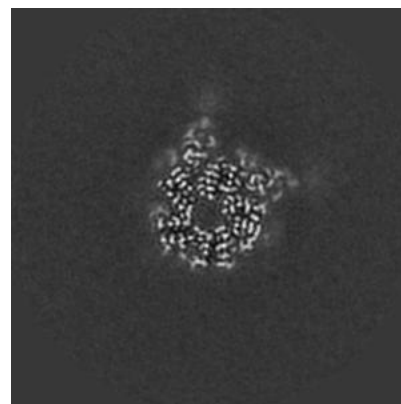
6.3.1 Primary map



X Index: 156



Y Index: 164



Z Index: 121

The images above show the largest variance slices of the map in three orthogonal directions.

6.4 Orthogonal surface views [i](#)

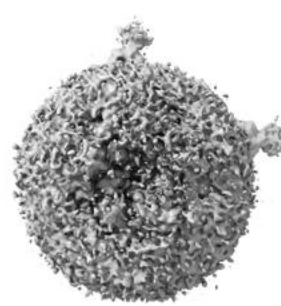
6.4.1 Primary map



X



Y



Z

The images above show the 3D surface view of the map at the recommended contour level 0.008. These images, in conjunction with the slice images, may facilitate assessment of whether an appropriate contour level has been provided.

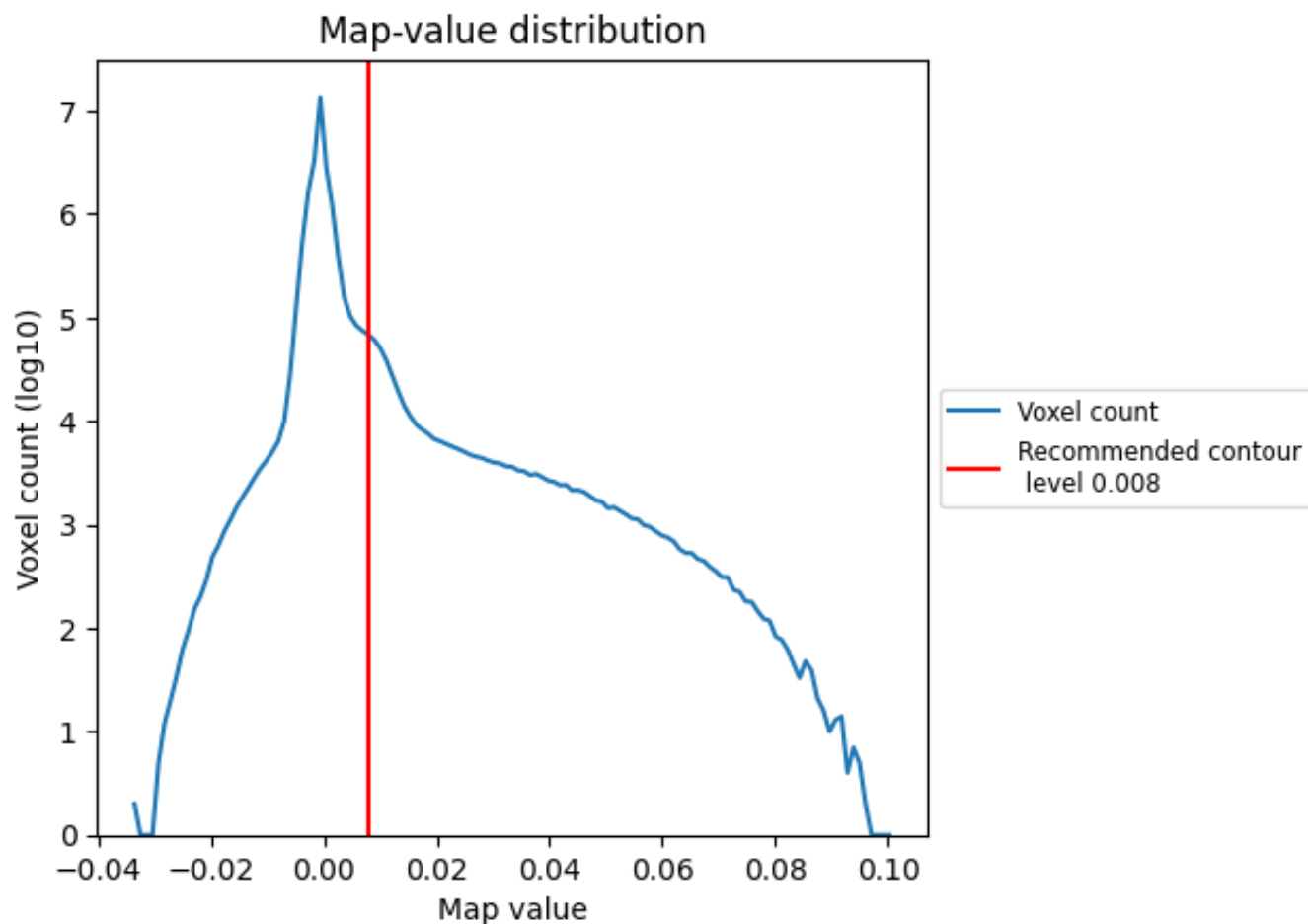
6.5 Mask visualisation

This section was not generated. No masks/segmentation were deposited.

7 Map analysis [i](#)

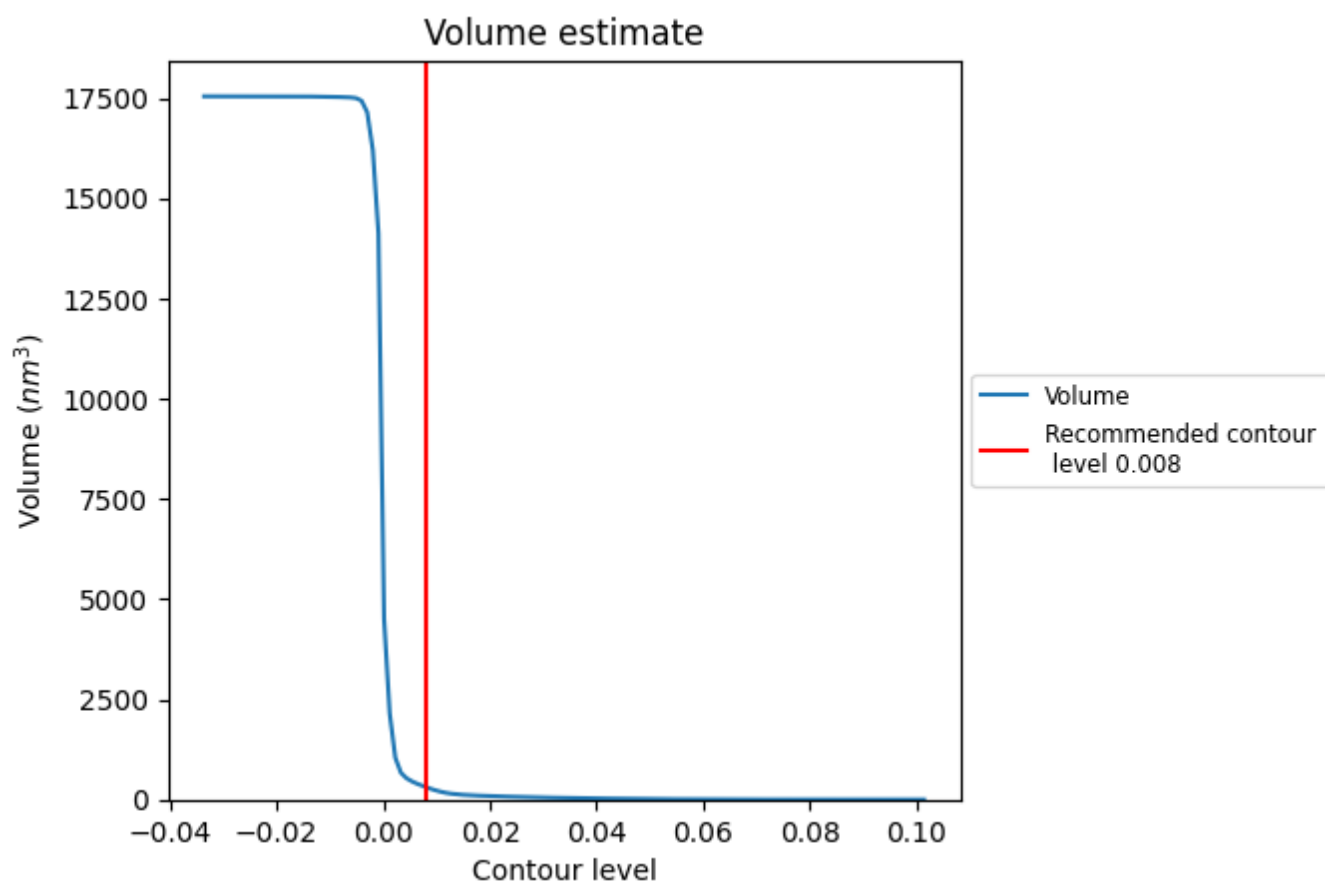
This section contains the results of statistical analysis of the map.

7.1 Map-value distribution [i](#)



The map-value distribution is plotted in 128 intervals along the x-axis. The y-axis is logarithmic. A spike in this graph at zero usually indicates that the volume has been masked.

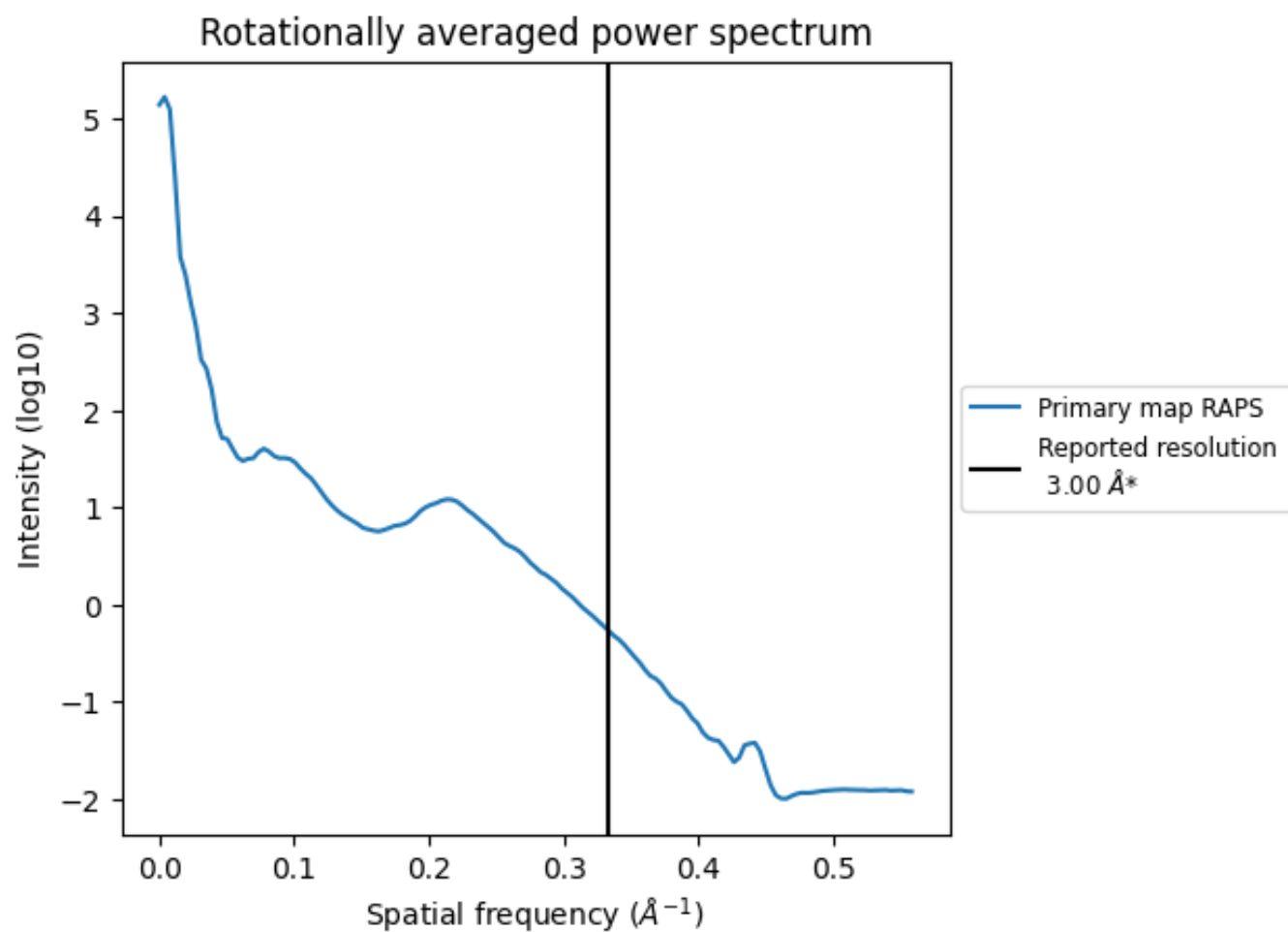
7.2 Volume estimate [i](#)



The volume at the recommended contour level is 311 nm³; this corresponds to an approximate mass of 281 kDa.

The volume estimate graph shows how the enclosed volume varies with the contour level. The recommended contour level is shown as a vertical line and the intersection between the line and the curve gives the volume of the enclosed surface at the given level.

7.3 Rotationally averaged power spectrum ⓘ



*Reported resolution corresponds to spatial frequency of 0.333 Å⁻¹

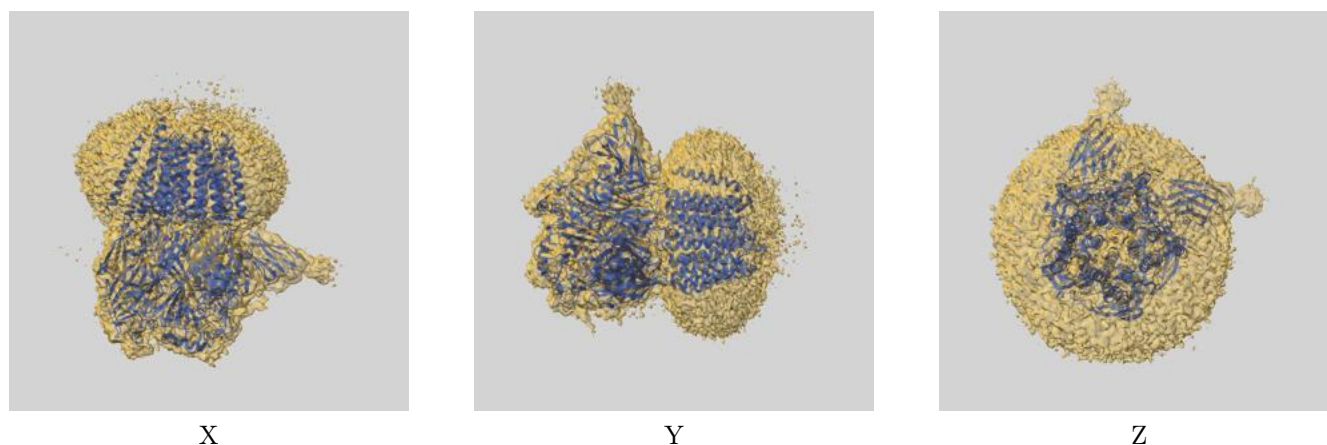
8 Fourier-Shell correlation

This section was not generated. No FSC curve or half-maps provided.

9 Map-model fit [i](#)

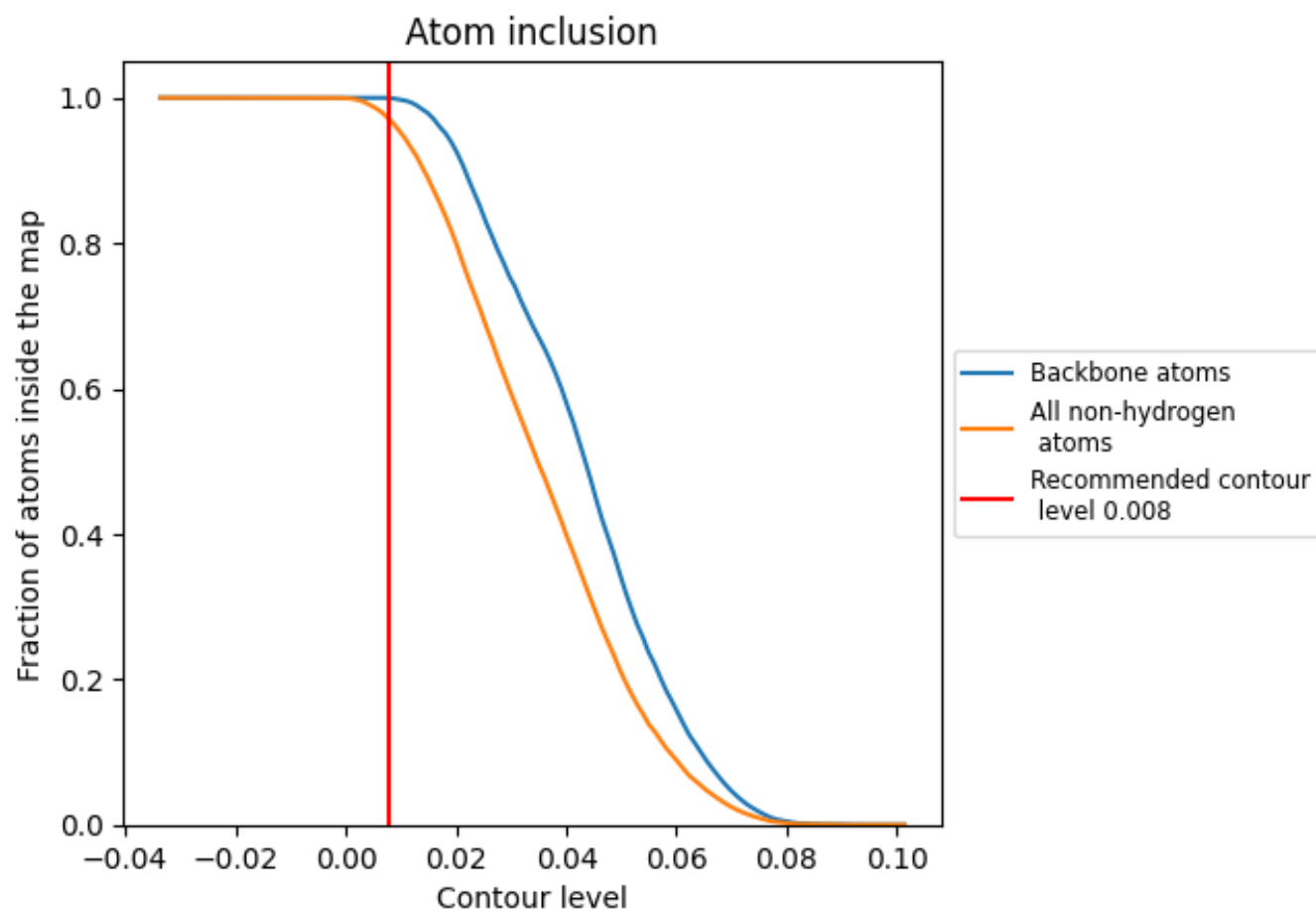
This section contains information regarding the fit between EMDB map EMD-14069 and PDB model 7QN7. Per-residue inclusion information can be found in section 3 on page 11.

9.1 Map-model overlay [i](#)



The images above show the 3D surface view of the map at the recommended contour level 0.008 at 50% transparency in yellow overlaid with a ribbon representation of the model coloured in blue. These images allow for the visual assessment of the quality of fit between the atomic model and the map.

9.2 Atom inclusion [i](#)



At the recommended contour level, 100% of all backbone atoms, 97% of all non-hydrogen atoms, are inside the map.