



# Full wwPDB X-ray Structure Validation Report ⓘ

May 3, 2021 – 10:05 pm BST

PDB ID : 1QO9  
Title : Native acetylcholinesterase from Drosophila Melanogaster  
Authors : Harel, M.; Silman, I.; Sussman, J.L.  
Deposited on : 1999-11-08  
Resolution : 2.70 Å(reported)

This is a Full wwPDB X-ray Structure Validation Report for a publicly released PDB entry.

We welcome your comments at [validation@mail.wwpdb.org](mailto:validation@mail.wwpdb.org)

A user guide is available at

<https://www.wwpdb.org/validation/2017/XrayValidationReportHelp>

with specific help available everywhere you see the ⓘ symbol.

---

The following versions of software and data (see [references ⓘ](#)) were used in the production of this report:

MolProbity : 4.02b-467  
Mogul : 1.8.5 (274361), CSD as541be (2020)  
Xtriage (Phenix) : 1.13  
EDS : 2.18  
Percentile statistics : 20191225.v01 (using entries in the PDB archive December 25th 2019)  
Refmac : 5.8.0158  
CCP4 : 7.0.044 (Gargrove)  
Ideal geometry (proteins) : Engh & Huber (2001)  
Ideal geometry (DNA, RNA) : Parkinson et al. (1996)  
Validation Pipeline (wwPDB-VP) : 2.18

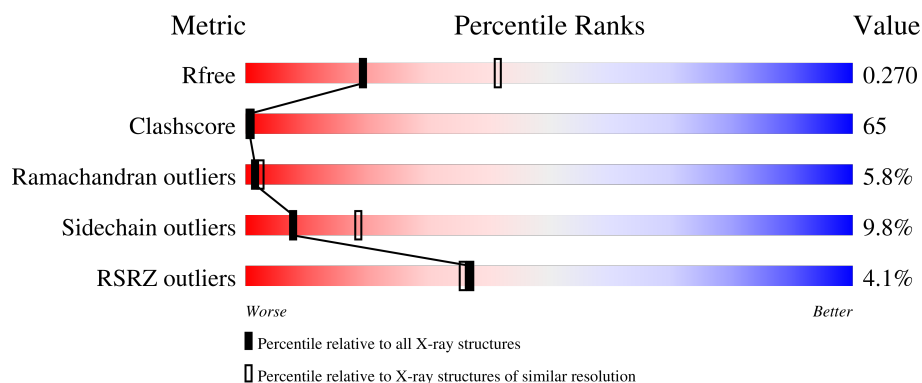
# 1 Overall quality at a glance

The following experimental techniques were used to determine the structure:

*X-RAY DIFFRACTION*

The reported resolution of this entry is 2.70 Å.

Percentile scores (ranging between 0-100) for global validation metrics of the entry are shown in the following graphic. The table shows the number of entries on which the scores are based.



Metric	Whole archive (#Entries)	Similar resolution (#Entries, resolution range(Å))
$R_{free}$	130704	2808 (2.70-2.70)
Clashscore	141614	3122 (2.70-2.70)
Ramachandran outliers	138981	3069 (2.70-2.70)
Sidechain outliers	138945	3069 (2.70-2.70)
RSRZ outliers	127900	2737 (2.70-2.70)

The table below summarises the geometric issues observed across the polymeric chains and their fit to the electron density. The red, orange, yellow and green segments of the lower bar indicate the fraction of residues that contain outliers for  $\geq 3$ , 2, 1 and 0 types of geometric quality criteria respectively. A grey segment represents the fraction of residues that are not modelled. The numeric value for each fraction is indicated below the corresponding segment, with a dot representing fractions  $\leq 5\%$ . The upper red bar (where present) indicates the fraction of residues that have poor fit to the electron density. The numeric value is given above the bar.

Mol	Chain	Length	Quality of chain
1	A	585	
2	B	5	

The following table lists non-polymeric compounds, carbohydrate monomers and non-standard residues in protein, DNA, RNA chains that are outliers for geometric or electron-density-fit criteria:

Mol	Type	Chain	Res	Chirality	Geometry	Clashes	Electron density
2	BMA	B	3	X	-	-	-
2	BMA	B	4	X	-	-	-
2	BMA	B	5	X	-	-	-
3	NAG	A	601	X	-	-	-

## 2 Entry composition [i](#)

There are 4 unique types of molecules in this entry. The entry contains 4479 atoms, of which 0 are hydrogens and 0 are deuteriums.

In the tables below, the ZeroOcc column contains the number of atoms modelled with zero occupancy, the AltConf column contains the number of residues with at least one atom in alternate conformation and the Trace column contains the number of residues modelled with at most 2 atoms.

- Molecule 1 is a protein called ACETYLCHOLINESTERASE.

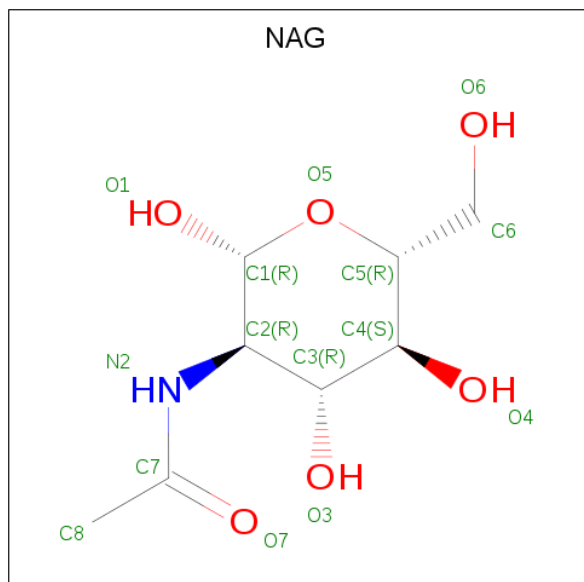
Mol	Chain	Residues	Atoms					ZeroOcc	AltConf	Trace
1	A	540	Total	C	N	O	S	0	5	0
			4273	2731	710	807	25			

- Molecule 2 is an oligosaccharide called beta-D-mannopyranose-(1-3)-beta-D-mannopyranose-(1-3)-beta-D-mannopyranose-(1-4)-2-acetamido-2-deoxy-beta-D-glucopyranose-(1-4)-2-acetamido-2-deoxy-beta-D-glucopyranose.



Mol	Chain	Residues	Atoms				ZeroOcc	AltConf	Trace
2	B	5	Total	C	N	O	0	0	0
			61	34	2	25			

- Molecule 3 is 2-acetamido-2-deoxy-beta-D-glucopyranose (three-letter code: NAG) (formula: C<sub>8</sub>H<sub>15</sub>NO<sub>6</sub>).



Mol	Chain	Residues	Atoms				ZeroOcc	AltConf
3	A	1	Total	C	N	O	0	0
			14	8	1	5		

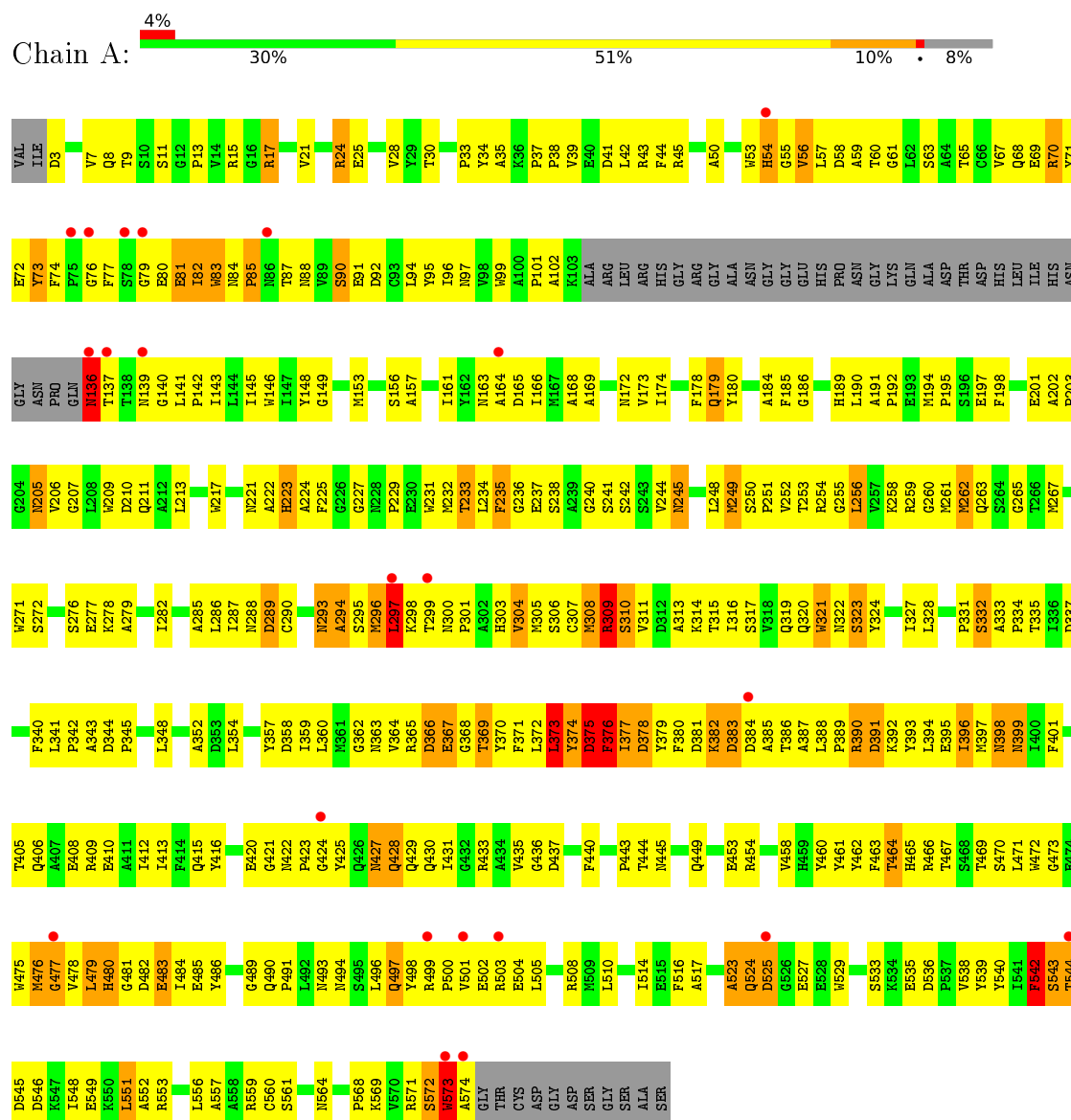
- Molecule 4 is water.

Mol	Chain	Residues	Atoms		ZeroOcc	AltConf
4	A	131	Total	O	0	0
			131	131		

### 3 Residue-property plots [i](#)

These plots are drawn for all protein, RNA, DNA and oligosaccharide chains in the entry. The first graphic for a chain summarises the proportions of the various outlier classes displayed in the second graphic. The second graphic shows the sequence view annotated by issues in geometry and electron density. Residues are color-coded according to the number of geometric quality criteria for which they contain at least one outlier: green = 0, yellow = 1, orange = 2 and red = 3 or more. A red dot above a residue indicates a poor fit to the electron density ( $RSRZ > 2$ ). Stretches of 2 or more consecutive residues without any outlier are shown as a green connector. Residues present in the sample, but not in the model, are shown in grey.

#### • Molecule 1: ACETYLCHOLINESTERASE



#### • Molecule 2: beta-D-mannopyranose-(1-3)-beta-D-mannopyranose-(1-3)-beta-D-mannopyranose-(1-4)-2-acetamido-2-deoxy-beta-D-glucopyranose-(1-4)-2-acetamido-2-deoxy-beta-D-glucopyranos e

Chain B:

60%

40%

EM61
EM62
EM63
EM64
EM65

## 4 Data and refinement statistics

Property	Value	Source
Space group	P 43 21 2	Depositor
Cell constants a, b, c, $\alpha$ , $\beta$ , $\gamma$	94.34Å 94.34Å 159.00Å 90.00° 90.00° 90.00°	Depositor
Resolution (Å)	30.00 – 2.70 29.83 – 2.70	Depositor EDS
% Data completeness (in resolution range)	95.7 (30.00-2.70) 99.1 (29.83-2.70)	Depositor EDS
$R_{merge}$	(Not available)	Depositor
$R_{sym}$	0.05	Depositor
$\langle I/\sigma(I) \rangle$ <sup>1</sup>	3.84 (at 2.68Å)	Xtriage
Refinement program	CNS 3.8	Depositor
R, $R_{free}$	0.258 , 0.301 0.273 , 0.270	Depositor DCC
$R_{free}$ test set	1990 reflections (9.85%)	wwPDB-VP
Wilson B-factor (Å <sup>2</sup> )	45.0	Xtriage
Anisotropy	0.153	Xtriage
Bulk solvent $k_{sol}$ (e/Å <sup>3</sup> ), $B_{sol}$ (Å <sup>2</sup> )	0.30 , 49.9	EDS
L-test for twinning <sup>2</sup>	$\langle  L  \rangle = 0.49$ , $\langle L^2 \rangle = 0.33$	Xtriage
Estimated twinning fraction	No twinning to report.	Xtriage
$F_o, F_c$ correlation	0.89	EDS
Total number of atoms	4479	wwPDB-VP
Average B, all atoms (Å <sup>2</sup> )	58.0	wwPDB-VP

Xtriage's analysis on translational NCS is as follows: *The largest off-origin peak in the Patterson function is 4.53% of the height of the origin peak. No significant pseudotranslation is detected.*

<sup>1</sup>Intensities estimated from amplitudes.

<sup>2</sup>Theoretical values of  $\langle |L| \rangle$ ,  $\langle L^2 \rangle$  for acentric reflections are 0.5, 0.333 respectively for untwinned datasets, and 0.375, 0.2 for perfectly twinned datasets.



## 5 Model quality

### 5.1 Standard geometry

Bond lengths and bond angles in the following residue types are not validated in this section: NAG, BMA

The Z score for a bond length (or angle) is the number of standard deviations the observed value is removed from the expected value. A bond length (or angle) with  $|Z| > 5$  is considered an outlier worth inspection. RMSZ is the root-mean-square of all Z scores of the bond lengths (or angles).

Mol	Chain	Bond lengths		Bond angles	
		RMSZ	# Z  >5	RMSZ	# Z  >5
1	A	0.50	0/4395	0.85	15/5982 (0.3%)

Chiral center outliers are detected by calculating the chiral volume of a chiral center and verifying if the center is modelled as a planar moiety or with the opposite hand. A planarity outlier is detected by checking planarity of atoms in a peptide group, atoms in a mainchain group or atoms of a sidechain that are expected to be planar.

Mol	Chain	#Chirality outliers	#Planarity outliers
1	A	0	3

There are no bond length outliers.

All (15) bond angle outliers are listed below:

Mol	Chain	Res	Type	Atoms	Z	Observed(°)	Ideal(°)
1	A	136	ASN	O-C-N	-17.56	94.60	122.70
1	A	136	ASN	CA-C-N	10.15	139.53	117.20
1	A	136	ASN	C-N-CA	9.20	144.71	121.70
1	A	309	ARG	NE-CZ-NH2	7.15	123.88	120.30
1	A	262	MET	CG-SD-CE	6.13	110.02	100.20
1	A	476	MET	CG-SD-CE	6.13	110.02	100.20
1	A	308	MET	CG-SD-CE	6.00	109.81	100.20
1	A	249	MET	CG-SD-CE	5.98	109.77	100.20
1	A	544	THR	N-CA-CB	-5.78	99.32	110.30
1	A	376[A]	PHE	N-CA-C	5.75	126.54	111.00
1	A	376[B]	PHE	N-CA-C	5.75	126.54	111.00
1	A	140	GLY	N-CA-C	-5.28	99.91	113.10
1	A	376[A]	PHE	CA-C-N	-5.22	105.71	117.20
1	A	376[B]	PHE	CA-C-N	-5.22	105.71	117.20
1	A	375	ASP	CA-C-N	-5.20	105.76	117.20

There are no chirality outliers.

All (3) planarity outliers are listed below:

Mol	Chain	Res	Type	Group
1	A	136	ASN	Peptide,Mainchain
1	A	376[A]	PHE	Sidechain

## 5.2 Too-close contacts

In the following table, the Non-H and H(model) columns list the number of non-hydrogen atoms and hydrogen atoms in the chain respectively. The H(added) column lists the number of hydrogen atoms added and optimized by MolProbity. The Clashes column lists the number of clashes within the asymmetric unit, whereas Symm-Clashes lists symmetry-related clashes.

Mol	Chain	Non-H	H(model)	H(added)	Clashes	Symm-Clashes
1	A	4273	0	4043	541	0
2	B	61	0	52	9	0
3	A	14	0	13	3	0
4	A	131	0	0	16	0
All	All	4479	0	4108	547	0

The all-atom clashscore is defined as the number of clashes found per 1000 atoms (including hydrogen atoms). The all-atom clashscore for this structure is 65.

All (547) close contacts within the same asymmetric unit are listed below, sorted by their clash magnitude.

Atom-1	Atom-2	Interatomic distance (Å)	Clash overlap (Å)
1:A:377:ILE:CG2	1:A:380:PHE:O	1.66	1.43
1:A:380:PHE:HA	1:A:386:THR:HG21	1.23	1.18
1:A:327:ILE:HA	1:A:375:ASP:OD2	1.47	1.12
1:A:377:ILE:HG22	1:A:380:PHE:O	1.39	1.11
1:A:136:ASN:OD1	1:A:137:THR:HG23	1.51	1.07
1:A:377:ILE:O	1:A:379:TYR:N	1.88	1.06
1:A:494:ASN:HA	1:A:503:ARG:HH21	1.19	1.06
1:A:166:ILE:HD12	1:A:166:ILE:H	1.19	1.05
1:A:163:ASN:HD21	1:A:165:ASP:HB2	1.21	1.04
1:A:222:ALA:HB3	1:A:229:PRO:HG3	1.39	1.04
1:A:377:ILE:C	1:A:379:TYR:H	1.57	1.03
1:A:245:ASN:HB2	1:A:262:MET:HE3	1.40	1.03
1:A:285:ALA:O	1:A:289:ASP:HB2	1.59	1.01
1:A:508:ARG:NH2	1:A:544:THR:OG1	1.95	1.00
1:A:473:GLY:H	1:A:476:MET:HE3	1.23	0.99

*Continued on next page...*

*Continued from previous page...*

Atom-1	Atom-2	Interatomic distance (Å)	Clash overlap (Å)
1:A:8:GLN:HG2	4:A:752:HOH:O	1.63	0.98
1:A:245:ASN:HB2	1:A:262:MET:CE	1.92	0.98
1:A:80:GLU:O	1:A:81:GLU:HB2	1.65	0.97
1:A:377:ILE:O	1:A:379:TYR:CD1	2.17	0.96
1:A:374:TYR:C	1:A:376[A]:PHE:H	1.69	0.95
1:A:377:ILE:HG21	1:A:380:PHE:O	1.66	0.94
1:A:201:GLU:HG2	1:A:305:MET:HG3	1.50	0.94
1:A:465:HIS:CD2	1:A:545:ASP:HB2	2.03	0.94
1:A:542:PHE:O	1:A:543:SER:O	1.86	0.94
1:A:60:THR:OG1	2:B:5:BMA:H62	1.69	0.93
1:A:390:ARG:HH11	1:A:394:LEU:HD11	1.31	0.92
1:A:297:LEU:O	1:A:301:PRO:HG3	1.67	0.92
1:A:375:ASP:OD1	1:A:376[A]:PHE:CE2	2.23	0.92
1:A:300:ASN:N	1:A:301:PRO:HD3	1.85	0.92
1:A:424:GLY:H	1:A:427:ASN:HB2	1.36	0.90
1:A:377:ILE:C	1:A:379:TYR:N	2.17	0.89
1:A:380:PHE:CA	1:A:386:THR:HG21	2.01	0.89
1:A:377:ILE:O	1:A:379:TYR:HD1	1.56	0.88
1:A:297:LEU:HD22	1:A:304:VAL:HG21	1.55	0.87
1:A:473:GLY:H	1:A:476:MET:CE	1.86	0.87
1:A:374:TYR:C	1:A:376[B]:PHE:H	1.70	0.87
1:A:493:ASN:HB3	1:A:496:LEU:HD12	1.57	0.87
1:A:382:LYS:HB3	1:A:382:LYS:NZ	1.91	0.86
1:A:464:THR:N	1:A:543:SER:OG	2.09	0.85
1:A:245:ASN:CB	1:A:262:MET:CE	2.55	0.85
1:A:471:LEU:HD23	4:A:784:HOH:O	1.77	0.85
1:A:305:MET:O	1:A:309:ARG:HG3	1.78	0.84
1:A:327:ILE:CA	1:A:375:ASP:OD2	2.25	0.84
1:A:376[B]:PHE:CE1	1:A:378:ASP:CG	2.50	0.84
1:A:369:THR:OG1	1:A:476:MET:HB3	1.77	0.84
1:A:287:ILE:HB	1:A:294:ALA:HB2	1.58	0.84
1:A:74:PHE:CZ	1:A:382:LYS:HB2	2.12	0.83
1:A:377:ILE:CG2	1:A:380:PHE:C	2.46	0.83
1:A:505:LEU:HD13	1:A:544:THR:HB	1.61	0.83
1:A:373:LEU:HD22	1:A:476:MET:SD	2.20	0.81
1:A:494:ASN:HA	1:A:503:ARG:NH2	1.93	0.81
1:A:380:PHE:HE2	1:A:428:GLN:HB2	1.44	0.81
1:A:309:ARG:O	1:A:310:SER:CB	2.27	0.80
1:A:375:ASP:OD1	1:A:376[A]:PHE:HE2	1.62	0.80
1:A:54:HIS:CD2	1:A:55:GLY:H	1.99	0.80
1:A:389:PRO:HD2	1:A:392:LYS:HG2	1.65	0.79

*Continued on next page...*

*Continued from previous page...*

Atom-1	Atom-2	Interatomic distance (Å)	Clash overlap (Å)
1:A:473:GLY:N	1:A:476:MET:HE3	1.98	0.79
1:A:387:ALA:HB2	1:A:425:TYR:CD1	2.18	0.78
1:A:377:ILE:HG23	1:A:380:PHE:O	1.82	0.78
1:A:499:ARG:HG2	1:A:499:ARG:HH11	1.49	0.77
1:A:382:LYS:HB3	1:A:382:LYS:HZ2	1.50	0.77
1:A:139:ASN:OD1	1:A:139:ASN:O	2.03	0.77
1:A:309:ARG:O	1:A:310:SER:OG	2.01	0.77
1:A:394:LEU:O	1:A:398:ASN:HB2	1.85	0.77
1:A:374:TYR:O	1:A:376[A]:PHE:N	2.16	0.77
1:A:548:ILE:HG22	1:A:549:GLU:N	1.97	0.77
1:A:433:ARG:HG3	1:A:559:ARG:NH1	2.00	0.76
1:A:464:THR:C	1:A:478:VAL:HG21	2.05	0.76
1:A:381:ASP:H	1:A:386:THR:CG2	1.98	0.76
1:A:525:ASP:OD1	1:A:525:ASP:N	2.15	0.76
1:A:25:GLU:HB3	1:A:102:ALA:HB3	1.68	0.76
1:A:60:THR:CB	2:B:5:BMA:H62	2.15	0.76
1:A:505:LEU:HD13	1:A:544:THR:CB	2.14	0.76
1:A:17:ARG:NH1	1:A:28:VAL:HB	2.00	0.76
1:A:390:ARG:NH1	1:A:394:LEU:HD11	1.99	0.76
1:A:241:SER:HB3	1:A:265:GLY:HA3	1.66	0.76
1:A:538:VAL:HG22	1:A:553:ARG:NE	2.01	0.76
1:A:166:ILE:H	1:A:166:ILE:CD1	1.96	0.75
1:A:467:THR:HG22	1:A:486:TYR:CE1	2.22	0.74
1:A:201:GLU:CG	1:A:305:MET:HG3	2.17	0.74
1:A:387:ALA:HA	1:A:424:GLY:O	1.88	0.74
1:A:87:THR:HG22	1:A:88:ASN:H	1.50	0.74
1:A:153:MET:CE	1:A:332:SER:HB2	2.18	0.73
1:A:245:ASN:CB	1:A:262:MET:HE3	2.14	0.73
1:A:249:MET:CE	1:A:354:LEU:HD21	2.17	0.73
1:A:238:SER:HB2	1:A:480:HIS:CE1	2.23	0.73
1:A:81:GLU:HA	1:A:84:ASN:ND2	2.04	0.73
1:A:309:ARG:HH11	1:A:309:ARG:HG2	1.53	0.73
1:A:179:GLN:HE21	1:A:179:GLN:HA	1.54	0.73
1:A:366:ASP:O	1:A:369:THR:HG23	1.89	0.73
1:A:38:PRO:HG3	1:A:94:LEU:HD11	1.70	0.72
1:A:234:LEU:HB2	1:A:244:VAL:HG13	1.69	0.72
1:A:309:ARG:HG2	1:A:309:ARG:NH1	2.04	0.72
1:A:382:LYS:HG2	1:A:383:ASP:OD1	1.89	0.72
1:A:70:ARG:HG3	1:A:84:ASN:HB3	1.71	0.72
1:A:166:ILE:HD12	1:A:166:ILE:N	2.02	0.72
1:A:568:PRO:HA	1:A:571:ARG:HD2	1.70	0.72

*Continued on next page...*

*Continued from previous page...*

Atom-1	Atom-2	Interatomic distance (Å)	Clash overlap (Å)
1:A:374:TYR:C	1:A:376[A]:PHE:N	2.40	0.72
1:A:381:ASP:N	1:A:386:THR:CG2	2.53	0.71
1:A:524:GLN:NE2	1:A:527:GLU:OE1	2.23	0.71
1:A:223:HIS:CD2	1:A:224:ALA:H	2.09	0.70
1:A:387:ALA:HB2	1:A:425:TYR:CE1	2.26	0.70
1:A:79:GLY:O	1:A:82:ILE:HG12	1.92	0.70
1:A:377:ILE:HG23	1:A:380:PHE:C	2.12	0.70
1:A:380:PHE:HE2	1:A:428:GLN:CB	2.04	0.70
1:A:70:ARG:NH1	1:A:81:GLU:OE2	2.25	0.70
1:A:473:GLY:HA3	1:A:476:MET:HE2	1.74	0.70
1:A:568:PRO:O	1:A:571:ARG:HB2	1.92	0.69
1:A:249:MET:HE1	1:A:354:LEU:HD11	1.74	0.69
1:A:424:GLY:N	1:A:427:ASN:HB2	2.08	0.69
1:A:300:ASN:N	1:A:301:PRO:CD	2.55	0.69
1:A:420:GLU:OE1	1:A:420:GLU:HA	1.91	0.69
1:A:388:LEU:O	1:A:424:GLY:HA2	1.92	0.69
1:A:548:ILE:CG2	1:A:549:GLU:N	2.56	0.68
3:A:601:NAG:H83	4:A:738:HOH:O	1.93	0.68
1:A:74:PHE:CE1	1:A:382:LYS:HB2	2.28	0.68
1:A:389:PRO:HD2	1:A:392:LYS:CG	2.23	0.68
1:A:87:THR:HG22	1:A:88:ASN:N	2.09	0.68
1:A:416:TYR:C	1:A:430:GLN:HE21	1.97	0.67
1:A:553:ARG:HH11	1:A:553:ARG:HG3	1.59	0.67
1:A:497:GLN:O	1:A:497:GLN:HG2	1.94	0.67
1:A:499:ARG:HG2	1:A:500:PRO:HD2	1.76	0.67
1:A:166:ILE:HD13	1:A:490[B]:GLN:OE1	1.95	0.67
1:A:396:ILE:O	1:A:399:ASN:N	2.26	0.67
2:B:4:BMA:C1	2:B:5:BMA:O2	2.42	0.67
1:A:35:ALA:HA	1:A:50:ALA:N	2.09	0.67
1:A:380:PHE:CE2	1:A:428:GLN:HB2	2.29	0.67
1:A:233:THR:HB	1:A:259:ARG:HG2	1.76	0.67
1:A:364:VAL:HG12	1:A:463:PHE:HD2	1.58	0.66
1:A:498:TYR:H	1:A:503:ARG:HH12	1.40	0.66
1:A:249:MET:HE1	1:A:354:LEU:HD21	1.76	0.66
1:A:306:SER:O	1:A:309:ARG:O	2.14	0.66
1:A:61:GLY:HA2	2:B:4:BMA:O4	1.96	0.66
1:A:571:ARG:O	1:A:573:TRP:N	2.29	0.66
1:A:551:LEU:O	1:A:552:ALA:HB3	1.95	0.65
1:A:81:GLU:CA	1:A:84:ASN:HD22	2.09	0.65
1:A:149:GLY:HA2	1:A:240:GLY:H	1.62	0.65
1:A:322:ASN:O	1:A:324:TYR:N	2.26	0.65

*Continued on next page...*

*Continued from previous page...*

Atom-1	Atom-2	Interatomic distance (Å)	Clash overlap (Å)
1:A:499:ARG:HG2	1:A:499:ARG:NH1	2.11	0.65
2:B:2:NAG:O7	2:B:2:NAG:H3	1.96	0.65
1:A:375:ASP:C	1:A:376[A]:PHE:CD2	2.70	0.65
1:A:431:ILE:O	1:A:435:VAL:HG23	1.96	0.65
1:A:57:LEU:HD23	1:A:58:ASP:N	2.11	0.64
1:A:445:ASN:O	1:A:449:GLN:HG3	1.97	0.64
1:A:304:VAL:O	1:A:307:CYS:HB3	1.97	0.64
1:A:233:THR:HG21	1:A:517:ALA:HA	1.78	0.64
1:A:327:ILE:HD12	1:A:375:ASP:HB3	1.80	0.64
1:A:466:ARG:HG2	1:A:470:SER:OG	1.98	0.64
1:A:81:GLU:CA	1:A:84:ASN:ND2	2.61	0.63
1:A:309:ARG:HH11	1:A:309:ARG:CG	2.10	0.63
1:A:467:THR:HG22	1:A:486:TYR:OH	1.98	0.63
1:A:163:ASN:HD21	1:A:165:ASP:CB	2.06	0.63
1:A:17:ARG:HG2	1:A:17:ARG:HH11	1.63	0.63
1:A:573:TRP:O	1:A:574:ALA:HB2	1.99	0.63
1:A:80:GLU:O	1:A:81:GLU:CB	2.43	0.63
1:A:153:MET:CE	1:A:331:PRO:HG2	2.29	0.63
1:A:320:GLN:HG3	1:A:321:TRP:N	2.14	0.63
1:A:415:GLN:HE21	1:A:415:GLN:HA	1.62	0.62
1:A:299:THR:C	1:A:301:PRO:HD3	2.20	0.62
1:A:136:ASN:OD1	1:A:137:THR:CG2	2.38	0.62
1:A:238:SER:HB2	1:A:480:HIS:HE1	1.64	0.62
1:A:267:MET:HA	1:A:272:SER:OG	2.00	0.61
1:A:189:HIS:HB3	1:A:279:ALA:HB1	1.82	0.61
1:A:70:ARG:HD3	1:A:72:GLU:OE1	2.01	0.61
1:A:153:MET:HE2	1:A:332:SER:HB2	1.80	0.61
1:A:245:ASN:CG	1:A:262:MET:CE	2.69	0.61
1:A:67:VAL:HG11	1:A:313:ALA:HB1	1.83	0.61
1:A:286:LEU:HD21	1:A:316:ILE:HG23	1.83	0.61
1:A:494:ASN:C	1:A:496:LEU:H	2.03	0.61
1:A:249:MET:HE3	1:A:354:LEU:HD21	1.83	0.60
1:A:545:ASP:O	1:A:546:ASP:HB3	2.00	0.60
1:A:498:TYR:HB2	1:A:503:ARG:NH1	2.17	0.60
1:A:491:PRO:HG3	1:A:498:TYR:CE2	2.35	0.60
1:A:467:THR:HG22	1:A:486:TYR:HE1	1.66	0.60
1:A:535:GLU:CD	1:A:535:GLU:H	2.04	0.60
1:A:42:LEU:HA	1:A:45:ARG:HD2	1.84	0.60
1:A:365:ARG:HD3	1:A:464:THR:HB	1.84	0.60
1:A:465:HIS:N	1:A:543:SER:OG	2.34	0.60
1:A:560:CYS:HB3	1:A:564:ASN:ND2	2.17	0.60

*Continued on next page...*

*Continued from previous page...*

Atom-1	Atom-2	Interatomic distance (Å)	Clash overlap (Å)
1:A:542:PHE:O	1:A:543:SER:C	2.40	0.60
1:A:473:GLY:N	1:A:476:MET:CE	2.61	0.60
1:A:54:HIS:CD2	1:A:55:GLY:N	2.70	0.60
1:A:376[B]:PHE:HE1	1:A:378:ASP:N	2.00	0.60
1:A:380:PHE:HE2	1:A:428:GLN:CG	2.15	0.59
1:A:465:HIS:HD2	1:A:545:ASP:HB2	1.65	0.59
1:A:143:ILE:HD11	1:A:222:ALA:HB1	1.84	0.59
1:A:499:ARG:CG	1:A:500:PRO:HD2	2.32	0.59
1:A:553:ARG:HG3	1:A:553:ARG:NH1	2.18	0.59
1:A:388:LEU:HB3	1:A:427:ASN:HB3	1.84	0.59
1:A:523:ALA:O	1:A:524:GLN:CB	2.50	0.59
1:A:539:TYR:CE2	1:A:556:LEU:HD12	2.38	0.59
1:A:548:ILE:CG2	1:A:549:GLU:H	2.16	0.59
1:A:67:VAL:HB	1:A:185:PHE:CE2	2.38	0.59
1:A:373:LEU:CD2	1:A:476:MET:SD	2.90	0.59
1:A:41[A]:ASP:O	1:A:45:ARG:HD2	2.03	0.59
1:A:317:SER:O	1:A:320:GLN:HG2	2.02	0.59
1:A:465:HIS:HB2	1:A:543:SER:HA	1.84	0.59
1:A:368:GLY:H	1:A:436:GLY:CA	2.16	0.58
1:A:41[B]:ASP:O	1:A:45:ARG:HD2	2.03	0.58
1:A:60:THR:O	2:B:4:BMA:H4	2.03	0.58
1:A:376[B]:PHE:CE1	1:A:378:ASP:N	2.71	0.58
1:A:433:ARG:HG3	1:A:559:ARG:HH12	1.65	0.58
1:A:328:LEU:HD21	1:A:371:PHE:CD2	2.39	0.58
1:A:365:ARG:HB2	1:A:464:THR:HB	1.86	0.58
1:A:491:PRO:HG3	1:A:498:TYR:HE2	1.67	0.58
1:A:153:MET:HE3	1:A:331:PRO:HG2	1.84	0.58
1:A:203:PRO:HD2	4:A:726:HOH:O	2.04	0.58
1:A:372:LEU:C	1:A:374:TYR:H	2.07	0.58
1:A:24:ARG:NH2	1:A:172:ASN:HB2	2.19	0.58
1:A:54:HIS:HD2	1:A:55:GLY:H	1.49	0.57
1:A:251:PRO:HG3	1:A:342:PRO:CG	2.35	0.57
1:A:364:VAL:HG12	1:A:463:PHE:CD2	2.39	0.57
1:A:538:VAL:HA	1:A:553:ARG:HG2	1.86	0.57
1:A:523:ALA:O	1:A:524:GLN:HB3	2.05	0.57
1:A:289:ASP:OD2	1:A:322:ASN:ND2	2.38	0.57
1:A:376[B]:PHE:CD1	1:A:377:ILE:N	2.72	0.57
1:A:461:TYR:CD1	1:A:461:TYR:C	2.78	0.57
1:A:137:THR:HA	1:A:231:TRP:CH2	2.39	0.57
1:A:286:LEU:O	1:A:290:CYS:HB2	2.04	0.57
1:A:34:TYR:OH	1:A:210:ASP:HB3	2.04	0.57

*Continued on next page...*

*Continued from previous page...*

Atom-1	Atom-2	Interatomic distance (Å)	Clash overlap (Å)
1:A:467:THR:HG22	1:A:486:TYR:CZ	2.38	0.57
1:A:288:ASN:ND2	1:A:294:ALA:HB3	2.19	0.57
1:A:69:GLU:O	1:A:70:ARG:HB3	2.05	0.56
1:A:24:ARG:HH22	1:A:172:ASN:HB2	1.70	0.56
1:A:244:VAL:O	1:A:248:LEU:HG	2.06	0.56
1:A:301:PRO:O	1:A:304:VAL:HG23	2.04	0.56
1:A:391:ASP:OD1	1:A:392:LYS:HD3	2.05	0.56
1:A:491:PRO:HB3	1:A:498:TYR:HD2	1.69	0.56
1:A:556:LEU:O	1:A:559:ARG:HB2	2.04	0.56
1:A:69:GLU:O	1:A:70:ARG:CB	2.53	0.56
1:A:81:GLU:C	1:A:83:TRP:H	2.09	0.56
1:A:377:ILE:HG22	1:A:380:PHE:C	2.20	0.56
1:A:305:MET:C	1:A:309:ARG:HG3	2.25	0.56
1:A:352:ALA:O	1:A:454:ARG:HD3	2.06	0.56
1:A:76:GLY:O	1:A:77:PHE:C	2.43	0.55
1:A:223:HIS:HD2	1:A:224:ALA:H	1.55	0.55
1:A:278:LYS:O	1:A:282:ILE:HG13	2.06	0.55
1:A:287:ILE:CB	1:A:294:ALA:HB2	2.31	0.55
1:A:161:ILE:HD11	1:A:485:GLU:HG3	1.87	0.55
1:A:142:PRO:HG2	1:A:173:VAL:HG12	1.89	0.55
1:A:299:THR:O	1:A:299:THR:HG22	2.06	0.55
1:A:309:ARG:O	1:A:310:SER:HB2	2.06	0.55
1:A:408:GLU:O	1:A:412:ILE:HG13	2.07	0.55
1:A:499:ARG:NH1	1:A:500:PRO:HG2	2.21	0.55
1:A:271:TRP:HB3	1:A:328:LEU:O	2.07	0.54
1:A:223:HIS:CD2	1:A:224:ALA:N	2.75	0.54
1:A:381:ASP:N	1:A:386:THR:HG21	2.21	0.54
1:A:261:MET:HA	1:A:360:LEU:O	2.08	0.54
1:A:282:ILE:HG23	1:A:323:SER:CB	2.38	0.54
2:B:2:NAG:H61	2:B:3:BMA:C2	2.38	0.54
2:B:2:NAG:H61	2:B:3:BMA:H2	1.90	0.54
1:A:206:VAL:HA	1:A:209:TRP:HD1	1.71	0.54
1:A:465:HIS:O	1:A:478:VAL:HG13	2.07	0.54
1:A:197[B]:GLU:HG3	4:A:779:HOH:O	2.06	0.54
1:A:206:VAL:HA	1:A:209:TRP:CD1	2.42	0.54
1:A:237:GLU:HA	1:A:263:GLN:HB2	1.90	0.54
1:A:504:GLU:O	1:A:508:ARG:HG3	2.07	0.54
1:A:322:ASN:C	1:A:324:TYR:H	2.11	0.54
1:A:464:THR:O	1:A:464:THR:OG1	2.26	0.54
1:A:296:MET:O	1:A:298:LYS:N	2.41	0.54
1:A:396:ILE:HG21	1:A:431:ILE:HG21	1.89	0.54

*Continued on next page...*



*Continued from previous page...*

Atom-1	Atom-2	Interatomic distance (Å)	Clash overlap (Å)
1:A:297:LEU:CD2	1:A:304:VAL:HG21	2.34	0.54
1:A:359:ILE:HB	1:A:458:VAL:HG22	1.90	0.54
1:A:34:TYR:HB3	1:A:96:ILE:HG13	1.90	0.54
3:A:601:NAG:C8	4:A:738:HOH:O	2.53	0.53
1:A:33:PRO:HD2	1:A:57:LEU:HD11	1.90	0.53
1:A:376[B]:PHE:CE1	1:A:378:ASP:OD1	2.60	0.53
1:A:545:ASP:O	1:A:546:ASP:CB	2.54	0.53
1:A:369:THR:O	1:A:372:LEU:HB3	2.08	0.53
1:A:440:PHE:O	1:A:444:THR:HG23	2.09	0.53
1:A:73:TYR:HA	4:A:762:HOH:O	2.09	0.53
1:A:44:PHE:HE2	1:A:308:MET:HB3	1.74	0.53
1:A:45:ARG:NH2	1:A:201:GLU:OE1	2.42	0.53
1:A:241:SER:OG	1:A:263:GLN:N	2.40	0.53
1:A:490[A]:GLN:NE2	4:A:709:HOH:O	2.42	0.53
1:A:234:LEU:O	1:A:260:GLY:HA2	2.09	0.53
1:A:296:MET:O	1:A:297:LEU:C	2.48	0.53
1:A:327:ILE:CB	1:A:375:ASP:OD2	2.56	0.53
1:A:296:MET:HB2	4:A:705:HOH:O	2.07	0.53
1:A:467:THR:HA	1:A:486:TYR:OH	2.09	0.53
1:A:573:TRP:O	1:A:574:ALA:CB	2.57	0.52
1:A:251:PRO:HG3	1:A:342:PRO:HG2	1.92	0.52
1:A:380:PHE:CE2	1:A:428:GLN:HG3	2.44	0.52
1:A:72:GLU:C	1:A:74:PHE:H	2.13	0.52
1:A:358:ASP:C	1:A:359:ILE:HD12	2.30	0.52
1:A:406:GLN:O	1:A:410:GLU:HG3	2.10	0.52
1:A:548:ILE:CG2	4:A:725:HOH:O	2.57	0.52
1:A:381:ASP:H	1:A:386:THR:HG23	1.74	0.52
1:A:409:ARG:O	1:A:413:ILE:HG13	2.09	0.52
1:A:415:GLN:HA	1:A:415:GLN:NE2	2.25	0.52
1:A:453[B]:GLU:OE1	4:A:702:HOH:O	2.19	0.52
1:A:282:ILE:HG23	1:A:323:SER:HB3	1.92	0.52
1:A:392:LYS:HD3	1:A:395:GLU:OE2	2.09	0.52
1:A:80:GLU:HG2	1:A:81:GLU:N	2.23	0.52
1:A:141:LEU:H	1:A:227:GLY:HA2	1.74	0.52
1:A:245:ASN:HB2	1:A:262:MET:HE2	1.87	0.52
1:A:524:GLN:HE21	1:A:527:GLU:CD	2.12	0.52
1:A:250:SER:O	1:A:254:ARG:HB2	2.10	0.52
1:A:263:GLN:HB3	1:A:483:GLU:OE1	2.08	0.52
1:A:392:LYS:O	1:A:395:GLU:N	2.43	0.52
1:A:81:GLU:HA	1:A:81:GLU:OE1	2.09	0.51
1:A:333:ALA:HB1	1:A:334:PRO:HD2	1.93	0.51

*Continued on next page...*

*Continued from previous page...*

Atom-1	Atom-2	Interatomic distance (Å)	Clash overlap (Å)
1:A:527:GLU:OE1	4:A:703:HOH:O	2.19	0.51
1:A:30:THR:O	1:A:59:ALA:HA	2.11	0.51
1:A:241:SER:OG	1:A:262:MET:HB3	2.09	0.51
1:A:319:GLN:HA	1:A:322:ASN:ND2	2.26	0.51
1:A:359:ILE:HD12	1:A:359:ILE:N	2.26	0.51
1:A:323:SER:O	1:A:331:PRO:HB3	2.11	0.51
1:A:17:ARG:HH11	1:A:28:VAL:HB	1.73	0.51
1:A:71:TYR:O	1:A:80:GLU:CD	2.48	0.51
1:A:195:PRO:HG2	1:A:198:PHE:CD2	2.45	0.51
1:A:157:ALA:H	1:A:179:GLN:NE2	2.09	0.51
1:A:498:TYR:N	1:A:503:ARG:HH12	2.09	0.51
1:A:242:SER:O	1:A:245:ASN:HB3	2.11	0.51
1:A:505:LEU:HD22	1:A:544:THR:HB	1.94	0.51
1:A:380:PHE:HD2	1:A:428:GLN:OE1	1.94	0.50
1:A:9:THR:C	1:A:11:SER:H	2.14	0.50
1:A:255:GLY:HA2	1:A:258:LYS:NZ	2.26	0.50
1:A:493:ASN:O	1:A:496:LEU:HB2	2.11	0.50
1:A:320:GLN:CG	1:A:321:TRP:N	2.74	0.50
1:A:380:PHE:CE2	1:A:428:GLN:CG	2.94	0.50
1:A:21:VAL:HG23	1:A:169:ALA:CB	2.42	0.50
1:A:65:THR:HG22	1:A:156:SER:OG	2.12	0.50
1:A:388:LEU:HD21	1:A:396:ILE:HD12	1.94	0.50
1:A:489:GLY:N	1:A:510:LEU:HD23	2.27	0.50
1:A:96:ILE:HG22	1:A:97:ASN:N	2.26	0.50
1:A:364:VAL:HG11	1:A:483:GLU:HG2	1.94	0.50
1:A:465:HIS:HB2	1:A:543:SER:CB	2.42	0.50
1:A:178:PHE:CE1	1:A:211:GLN:HA	2.47	0.49
1:A:217:TRP:CE2	1:A:221:ASN:ND2	2.80	0.49
1:A:236:GLY:N	1:A:244:VAL:HG21	2.27	0.49
1:A:382:LYS:HB3	1:A:382:LYS:HZ3	1.76	0.49
1:A:74:PHE:CD1	1:A:382:LYS:HD3	2.47	0.49
1:A:235:PHE:HA	1:A:261:MET:O	2.11	0.49
1:A:536:ASP:CG	1:A:538:VAL:HG23	2.33	0.49
1:A:375:ASP:C	1:A:376[A]:PHE:CG	2.81	0.49
1:A:380:PHE:CD2	1:A:428:GLN:OE1	2.66	0.49
1:A:539:TYR:CD2	1:A:556:LEU:HD12	2.48	0.49
1:A:7:VAL:HG11	1:A:225:PHE:CE1	2.48	0.49
1:A:365:ARG:HA	1:A:462:TYR:CZ	2.48	0.49
1:A:399:ASN:C	1:A:399:ASN:ND2	2.66	0.49
1:A:501:VAL:HG23	1:A:502:GLU:N	2.28	0.49
1:A:303:HIS:O	1:A:307:CYS:HB2	2.12	0.49

*Continued on next page...*

*Continued from previous page...*

Atom-1	Atom-2	Interatomic distance (Å)	Clash overlap (Å)
1:A:63:SER:HB2	1:A:95:TYR:CD2	2.48	0.48
1:A:363:ASN:ND2	1:A:460:TYR:OH	2.47	0.48
1:A:365:ARG:HB2	1:A:464:THR:HA	1.95	0.48
1:A:440:PHE:O	1:A:443:PRO:HD2	2.14	0.48
1:A:428:GLN:HG2	1:A:429:GLN:N	2.29	0.48
1:A:233:THR:HG22	1:A:259:ARG:HD2	1.95	0.48
1:A:35:ALA:HA	1:A:50:ALA:H	1.79	0.48
1:A:421:GLY:O	1:A:423:PRO:HD3	2.13	0.48
1:A:157:ALA:N	1:A:179:GLN:HE22	2.12	0.48
1:A:380:PHE:C	1:A:386:THR:HG21	2.33	0.48
1:A:389:PRO:HG2	1:A:392:LYS:NZ	2.28	0.48
1:A:311:VAL:HG12	1:A:315:THR:HB	1.96	0.48
1:A:510:LEU:O	1:A:514:ILE:HG12	2.13	0.48
1:A:69:GLU:CD	1:A:317:SER:OG	2.52	0.48
1:A:186:GLY:O	1:A:206:VAL:HG22	2.14	0.48
1:A:374:TYR:C	1:A:376[B]:PHE:N	2.43	0.48
1:A:381:ASP:O	1:A:475:TRP:HZ2	1.96	0.48
1:A:463:PHE:HE2	1:A:482:ASP:HB3	1.78	0.48
1:A:466:ARG:NH2	1:A:473:GLY:O	2.46	0.47
1:A:314:LYS:HG2	4:A:798:HOH:O	2.14	0.47
1:A:101:PRO:HD2	1:A:174:ILE:HD13	1.96	0.47
1:A:377:ILE:HA	1:A:380:PHE:H	1.79	0.47
1:A:485:GLU:HG2	1:A:490[A]:GLN:OE1	2.13	0.47
1:A:491:PRO:O	1:A:503:ARG:HG2	2.14	0.47
1:A:465:HIS:HB2	1:A:543:SER:HB3	1.96	0.47
1:A:533:SER:HB2	1:A:535:GLU:OE1	2.14	0.47
1:A:388:LEU:HA	1:A:389:PRO:HD3	1.77	0.47
1:A:157:ALA:H	1:A:179:GLN:CD	2.18	0.47
1:A:393:TYR:HE1	1:A:413:ILE:HG23	1.80	0.47
1:A:431:ILE:HD12	1:A:431:ILE:H	1.80	0.47
1:A:68:GLN:O	1:A:69:GLU:OE1	2.33	0.47
1:A:406:GLN:HA	1:A:409:ARG:HB2	1.97	0.47
1:A:473:GLY:CA	1:A:476:MET:HE2	2.43	0.47
1:A:503:ARG:HG3	1:A:503:ARG:HH11	1.80	0.47
1:A:529:TRP:CE2	1:A:540:TYR:HB2	2.50	0.47
1:A:571:ARG:NH2	4:A:716:HOH:O	2.47	0.47
1:A:141:LEU:HB3	1:A:142:PRO:HD2	1.97	0.47
1:A:148:TYR:HE2	1:A:179:GLN:HA	1.80	0.47
1:A:472:TRP:HE3	1:A:476:MET:CE	2.27	0.47
1:A:405:THR:OG1	1:A:408:GLU:HG2	2.15	0.46
1:A:523:ALA:O	1:A:524:GLN:CG	2.64	0.46

*Continued on next page...*

*Continued from previous page...*

Atom-1	Atom-2	Interatomic distance (Å)	Clash overlap (Å)
1:A:17:ARG:HH12	1:A:28:VAL:HB	1.80	0.46
1:A:234:LEU:CB	1:A:244:VAL:HG13	2.41	0.46
1:A:372:LEU:O	1:A:374:TYR:N	2.48	0.46
1:A:399:ASN:C	1:A:399:ASN:HD22	2.17	0.46
1:A:494:ASN:C	1:A:496:LEU:N	2.66	0.46
1:A:508:ARG:NH2	1:A:544:THR:HG1	2.11	0.46
1:A:99:TRP:CD2	1:A:164:ALA:HB3	2.50	0.46
1:A:287:ILE:CG2	1:A:294:ALA:HB2	2.46	0.46
1:A:42:LEU:O	1:A:43:ARG:C	2.53	0.46
1:A:392:LYS:O	1:A:395:GLU:HB2	2.16	0.46
1:A:88:ASN:HD22	3:A:601:NAG:H5	1.47	0.46
1:A:178:PHE:HE1	1:A:211:GLN:HG2	1.80	0.46
1:A:497:GLN:O	1:A:498:TYR:HD1	1.99	0.46
1:A:81:GLU:HA	1:A:84:ASN:HD22	1.71	0.46
1:A:191:ALA:HB3	1:A:192:PRO:HD3	1.98	0.45
1:A:344:ASP:OD1	1:A:345:PRO:HD2	2.16	0.45
1:A:393:TYR:HB2	1:A:427:ASN:ND2	2.31	0.45
1:A:465:HIS:HB2	1:A:543:SER:CA	2.46	0.45
1:A:38:PRO:HG3	1:A:94:LEU:CD1	2.43	0.45
1:A:179:GLN:HA	1:A:179:GLN:NE2	2.28	0.45
1:A:255:GLY:O	1:A:256:LEU:C	2.53	0.45
1:A:481:GLY:C	1:A:483:GLU:H	2.20	0.45
1:A:92:ASP:CG	1:A:95:TYR:HH	2.20	0.45
1:A:240:GLY:O	1:A:244:VAL:HG23	2.15	0.45
1:A:251:PRO:HG3	1:A:342:PRO:HG3	1.97	0.45
1:A:96:ILE:CG2	1:A:97:ASN:N	2.79	0.45
1:A:34:TYR:CD2	1:A:96:ILE:HG13	2.51	0.45
1:A:569:LYS:O	1:A:572:SER:HB2	2.17	0.45
1:A:343:ALA:HB3	1:A:348:LEU:CD2	2.47	0.45
1:A:249:MET:HE1	1:A:354:LEU:CD1	2.45	0.45
1:A:362:GLY:HA3	1:A:461:TYR:O	2.16	0.45
1:A:469:THR:HG22	1:A:469:THR:O	2.16	0.45
1:A:475:TRP:C	1:A:477:GLY:H	2.20	0.45
1:A:551:LEU:O	1:A:552:ALA:CB	2.60	0.45
1:A:74:PHE:HB3	1:A:77:PHE:HB2	1.99	0.45
1:A:81:GLU:C	1:A:83:TRP:N	2.70	0.45
1:A:377:ILE:O	1:A:379:TYR:CG	2.68	0.45
1:A:505:LEU:CD1	1:A:544:THR:HB	2.41	0.45
1:A:557:ALA:O	1:A:561:SER:HB2	2.16	0.45
1:A:223:HIS:CD2	1:A:223:HIS:N	2.85	0.44
1:A:237:GLU:HB2	1:A:263:GLN:NE2	2.32	0.44

*Continued on next page...*

*Continued from previous page...*

Atom-1	Atom-2	Interatomic distance (Å)	Clash overlap (Å)
1:A:87:THR:CG2	1:A:88:ASN:N	2.79	0.44
1:A:145:ILE:HB	1:A:234:LEU:HD23	1.99	0.44
1:A:35:ALA:HB2	1:A:213:LEU:HD23	1.99	0.44
1:A:235:PHE:HB2	1:A:261:MET:HB3	1.99	0.44
1:A:389:PRO:HG2	1:A:392:LYS:HZ3	1.83	0.44
1:A:461:TYR:CD1	1:A:461:TYR:O	2.70	0.44
1:A:77:PHE:CZ	1:A:471:LEU:O	2.70	0.44
1:A:168:ALA:O	1:A:172:ASN:N	2.49	0.44
1:A:63:SER:CB	1:A:95:TYR:HB2	2.47	0.44
1:A:370:TYR:HB2	1:A:479:LEU:HD12	2.00	0.44
1:A:548:ILE:HG22	1:A:549:GLU:O	2.17	0.44
1:A:390:ARG:NH1	1:A:394:LEU:HD21	2.33	0.44
1:A:437:ASP:OD1	1:A:559:ARG:NH1	2.50	0.44
1:A:307:CYS:O	1:A:310:SER:HB2	2.17	0.44
1:A:92:ASP:C	1:A:92:ASP:OD1	2.56	0.44
1:A:377:ILE:HB	1:A:378:ASP:H	1.64	0.44
1:A:195:PRO:HG2	1:A:198:PHE:HD2	1.83	0.43
1:A:289:ASP:O	1:A:319:GLN:OE1	2.36	0.43
1:A:233:THR:HG21	1:A:517:ALA:CA	2.45	0.43
1:A:255:GLY:HA2	1:A:258:LYS:HZ3	1.83	0.43
1:A:352:ALA:O	1:A:454:ARG:CD	2.65	0.43
1:A:305:MET:C	1:A:307:CYS:N	2.70	0.43
1:A:388:LEU:HD23	1:A:431:ILE:HD11	2.01	0.43
1:A:235:PHE:CB	1:A:261:MET:HB3	2.48	0.43
1:A:354:LEU:O	1:A:357:TYR:HB2	2.19	0.43
1:A:491:PRO:HA	1:A:498:TYR:CD2	2.53	0.43
1:A:72:GLU:O	1:A:74:PHE:N	2.51	0.43
1:A:157:ALA:H	1:A:179:GLN:HE22	1.65	0.43
1:A:168:ALA:O	1:A:172:ASN:HA	2.18	0.43
1:A:372:LEU:C	1:A:374:TYR:N	2.72	0.43
1:A:490[A]:GLN:N	1:A:491:PRO:CD	2.82	0.43
1:A:101:PRO:CD	1:A:174:ILE:HD13	2.49	0.43
1:A:321:TRP:HZ3	1:A:324:TYR:CD1	2.37	0.43
1:A:406:GLN:N	1:A:409:ARG:NH2	2.67	0.43
1:A:464:THR:CA	1:A:478:VAL:HG21	2.49	0.43
1:A:180:TYR:HB2	1:A:207:GLY:O	2.19	0.42
1:A:190:LEU:HB2	1:A:202:ALA:HB3	2.00	0.42
1:A:233:THR:CG2	1:A:259:ARG:HD2	2.49	0.42
1:A:17:ARG:NH1	1:A:28:VAL:CB	2.78	0.42
1:A:296:MET:N	4:A:705:HOH:O	2.31	0.42
1:A:7:VAL:HG11	1:A:225:PHE:CZ	2.54	0.42

*Continued on next page...*

*Continued from previous page...*

Atom-1	Atom-2	Interatomic distance (Å)	Clash overlap (Å)
1:A:13:PRO:HG2	1:A:56:VAL:HA	2.01	0.42
1:A:24:ARG:HB2	1:A:169:ALA:HB1	2.01	0.42
1:A:53:TRP:CE2	1:A:57:LEU:HD12	2.54	0.42
1:A:205:ASN:HD22	1:A:337:ASP:CG	2.22	0.42
1:A:277:GLU:H	1:A:277:GLU:HG2	1.54	0.42
1:A:396:ILE:CG2	1:A:431:ILE:HG21	2.49	0.42
1:A:286:LEU:CD1	1:A:320:GLN:HA	2.49	0.42
1:A:41[A]:ASP:O	1:A:45:ARG:CD	2.67	0.42
1:A:72:GLU:HA	1:A:80:GLU:OE2	2.19	0.42
1:A:148:TYR:CE2	1:A:179:GLN:NE2	2.88	0.42
1:A:17:ARG:HH11	1:A:17:ARG:CG	2.28	0.42
1:A:37:PRO:O	1:A:39:VAL:N	2.52	0.42
1:A:81:GLU:H	1:A:84:ASN:ND2	2.17	0.42
1:A:184:ALA:CB	1:A:286:LEU:HD22	2.50	0.42
1:A:367:GLU:HB2	1:A:436:GLY:HA3	2.02	0.42
1:A:377:ILE:O	1:A:379:TYR:CA	2.66	0.42
1:A:440:PHE:C	1:A:443:PRO:HD2	2.40	0.42
1:A:41[B]:ASP:O	1:A:45:ARG:CD	2.67	0.42
1:A:149:GLY:HA3	1:A:237:GLU:O	2.20	0.42
1:A:367:GLU:HB2	1:A:436:GLY:CA	2.50	0.42
1:A:368:GLY:H	1:A:436:GLY:HA3	1.82	0.42
1:A:60:THR:CB	2:B:5:BMA:C6	2.93	0.42
1:A:253:THR:O	1:A:256:LEU:HD13	2.20	0.42
1:A:293:ASN:O	1:A:295:SER:N	2.48	0.42
1:A:146:TRP:HB2	1:A:235:PHE:CE1	2.55	0.42
1:A:296:MET:SD	1:A:299:THR:HB	2.60	0.42
1:A:90:SER:O	1:A:91:GLU:C	2.57	0.41
1:A:377:ILE:HG23	1:A:380:PHE:CA	2.50	0.41
1:A:401:PHE:HA	4:A:733:HOH:O	2.19	0.41
1:A:427:ASN:O	1:A:431:ILE:HD12	2.20	0.41
1:A:464:THR:HA	1:A:478:VAL:HG21	2.01	0.41
1:A:15:ARG:O	1:A:15:ARG:HG3	2.19	0.41
1:A:72:GLU:C	1:A:74:PHE:N	2.72	0.41
1:A:92:ASP:OD1	1:A:95:TYR:OH	2.34	0.41
1:A:249:MET:HE1	1:A:354:LEU:CD2	2.47	0.41
1:A:572:SER:O	1:A:573:TRP:HB2	2.19	0.41
1:A:17:ARG:HH12	1:A:28:VAL:CB	2.34	0.41
1:A:81:GLU:N	1:A:84:ASN:ND2	2.68	0.41
1:A:43:ARG:HB3	1:A:309:ARG:HH12	1.85	0.41
1:A:245:ASN:CG	1:A:262:MET:HE2	2.41	0.41
1:A:535:GLU:CD	1:A:535:GLU:N	2.72	0.41

*Continued on next page...*

*Continued from previous page...*

Atom-1	Atom-2	Interatomic distance (Å)	Clash overlap (Å)
1:A:251:PRO:HB3	1:A:254:ARG:NH2	2.36	0.41
1:A:363:ASN:HB3	1:A:367:GLU:OE2	2.21	0.41
1:A:366:ASP:OD2	1:A:478:VAL:N	2.45	0.41
1:A:377:ILE:O	1:A:379:TYR:CB	2.68	0.41
1:A:143:ILE:HB	1:A:232:MET:HG2	2.02	0.41
1:A:377:ILE:CG2	1:A:380:PHE:CA	2.98	0.41
1:A:74:PHE:CD1	1:A:382:LYS:HE3	2.56	0.41
1:A:472:TRP:CE3	1:A:476:MET:CE	3.03	0.41
1:A:9:THR:C	1:A:11:SER:N	2.75	0.41
1:A:70:ARG:NH1	1:A:81:GLU:CD	2.74	0.41
1:A:70:ARG:CG	1:A:84:ASN:OD1	2.69	0.41
1:A:305:MET:CE	1:A:305:MET:HA	2.51	0.41
1:A:358:ASP:O	1:A:516:PHE:HZ	2.03	0.41
1:A:397:MET:SD	1:A:431:ILE:HG23	2.60	0.41
1:A:486:TYR:CD1	1:A:486:TYR:N	2.88	0.41
1:A:523:ALA:O	1:A:524:GLN:HG2	2.21	0.41
1:A:375:ASP:O	1:A:376[A]:PHE:CD2	2.74	0.41
1:A:536:ASP:OD2	1:A:538:VAL:HG23	2.20	0.41
1:A:77:PHE:O	1:A:80:GLU:O	2.38	0.40
1:A:256:LEU:HD12	1:A:256:LEU:H	1.85	0.40
1:A:371:PHE:O	1:A:375:ASP:CB	2.70	0.40
1:A:505:LEU:HD13	1:A:544:THR:OG1	2.20	0.40
1:A:141:LEU:N	1:A:227:GLY:HA2	2.35	0.40
1:A:252:VAL:HG21	1:A:340:PHE:HA	2.02	0.40
1:A:551:LEU:HA	1:A:551:LEU:HD23	1.81	0.40
1:A:69:GLU:OE2	1:A:317:SER:C	2.60	0.40
1:A:288:ASN:OD1	1:A:294:ALA:N	2.49	0.40
1:A:385:ALA:HA	1:A:475:TRP:CD1	2.55	0.40
1:A:276:SER:O	1:A:279:ALA:HB3	2.22	0.40
1:A:305:MET:O	1:A:308:MET:N	2.53	0.40
1:A:387:ALA:HB2	1:A:425:TYR:HD1	1.79	0.40
1:A:390:ARG:HD3	1:A:390:ARG:O	2.21	0.40
1:A:467:THR:OG1	1:A:470:SER:HA	2.22	0.40
1:A:476:MET:O	1:A:477:GLY:C	2.59	0.40
1:A:81:GLU:C	1:A:84:ASN:HD22	2.25	0.40
1:A:168:ALA:O	1:A:172:ASN:CA	2.70	0.40
1:A:189:HIS:HB3	1:A:279:ALA:CB	2.50	0.40
1:A:233:THR:HA	1:A:259:ARG:O	2.22	0.40
1:A:305:MET:HA	1:A:305:MET:HE3	2.03	0.40
1:A:416:TYR:C	1:A:430:GLN:NE2	2.71	0.40

There are no symmetry-related clashes.

## 5.3 Torsion angles

### 5.3.1 Protein backbone

In the following table, the Percentiles column shows the percent Ramachandran outliers of the chain as a percentile score with respect to all X-ray entries followed by that with respect to entries of similar resolution.

The Analysed column shows the number of residues for which the backbone conformation was analysed, and the total number of residues.

Mol	Chain	Analysed	Favoured	Allowed	Outliers	Percentiles
1	A	541/585 (92%)	418 (77%)	91 (17%)	32 (6%)	<b>1</b> <b>2</b>

All (32) Ramachandran outliers are listed below:

Mol	Chain	Res	Type
1	A	81	GLU
1	A	297	LEU
1	A	310	SER
1	A	323	SER
1	A	523	ALA
1	A	524	GLN
1	A	543	SER
1	A	551	LEU
1	A	572	SER
1	A	85	PRO
1	A	256	LEU
1	A	373	LEU
1	A	378	ASP
1	A	477	GLY
1	A	542	PHE
1	A	54	HIS
1	A	70	ARG
1	A	73	TYR
1	A	375	ASP
1	A	376[A]	PHE
1	A	376[B]	PHE
1	A	293	ASN
1	A	294	ALA
1	A	321	TRP
1	A	367	GLU
1	A	422	ASN
1	A	573	TRP
1	A	205	ASN

*Continued on next page...*



*Continued from previous page...*

Mol	Chain	Res	Type
1	A	480	HIS
1	A	484	ILE
1	A	82	ILE
1	A	396	ILE

### 5.3.2 Protein sidechains ⓘ

In the following table, the Percentiles column shows the percent sidechain outliers of the chain as a percentile score with respect to all X-ray entries followed by that with respect to entries of similar resolution.

The Analysed column shows the number of residues for which the sidechain conformation was analysed, and the total number of residues.

Mol	Chain	Analysed	Rotameric	Outliers	Percentiles
1	A	445/480 (93%)	402 (90%)	43 (10%)	8 19

All (43) residues with a non-rotameric sidechain are listed below:

Mol	Chain	Res	Type
1	A	3	ASP
1	A	17	ARG
1	A	24	ARG
1	A	56	VAL
1	A	83	TRP
1	A	85	PRO
1	A	90	SER
1	A	136	ASN
1	A	179	GLN
1	A	194	MET
1	A	223	HIS
1	A	233	THR
1	A	235	PHE
1	A	245	ASN
1	A	289	ASP
1	A	296	MET
1	A	297	LEU
1	A	304	VAL
1	A	309	ARG
1	A	332	SER
1	A	335	THR
1	A	341	LEU

*Continued on next page...*

*Continued from previous page...*

Mol	Chain	Res	Type
1	A	366	ASP
1	A	369	THR
1	A	373	LEU
1	A	374	TYR
1	A	377	ILE
1	A	382	LYS
1	A	383	ASP
1	A	384	ASP
1	A	390	ARG
1	A	391	ASP
1	A	398	ASN
1	A	399	ASN
1	A	427	ASN
1	A	428	GLN
1	A	464	THR
1	A	479	LEU
1	A	483	GLU
1	A	497	GLN
1	A	525	ASP
1	A	542	PHE
1	A	573	TRP

Sometimes sidechains can be flipped to improve hydrogen bonding and reduce clashes. All (21) such sidechains are listed below:

Mol	Chain	Res	Type
1	A	8	GLN
1	A	22	GLN
1	A	27	HIS
1	A	54	HIS
1	A	163	ASN
1	A	172	ASN
1	A	179	GLN
1	A	223	HIS
1	A	245	ASN
1	A	263	GLN
1	A	322	ASN
1	A	363	ASN
1	A	398	ASN
1	A	399	ASN
1	A	415	GLN
1	A	427	ASN
1	A	428	GLN

*Continued on next page...*

*Continued from previous page...*

Mol	Chain	Res	Type
1	A	430	GLN
1	A	480	HIS
1	A	524	GLN
1	A	564	ASN

### 5.3.3 RNA ⓘ

There are no RNA molecules in this entry.

### 5.4 Non-standard residues in protein, DNA, RNA chains ⓘ

There are no non-standard protein/DNA/RNA residues in this entry.

### 5.5 Carbohydrates ⓘ

5 monosaccharides are modelled in this entry.

In the following table, the Counts columns list the number of bonds (or angles) for which Mogul statistics could be retrieved, the number of bonds (or angles) that are observed in the model and the number of bonds (or angles) that are defined in the Chemical Component Dictionary. The Link column lists molecule types, if any, to which the group is linked. The Z score for a bond length (or angle) is the number of standard deviations the observed value is removed from the expected value. A bond length (or angle) with  $|Z| > 2$  is considered an outlier worth inspection. RMSZ is the root-mean-square of all Z scores of the bond lengths (or angles).

Mol	Type	Chain	Res	Link	Bond lengths			Bond angles		
					Counts	RMSZ	$\# Z  > 2$	Counts	RMSZ	$\# Z  > 2$
2	NAG	B	1	1,2	14,14,15	0.50	0	17,19,21	0.95	1 (5%)
2	NAG	B	2	2	14,14,15	0.56	0	17,19,21	0.72	0
2	BMA	B	3	2	11,11,12	0.63	0	15,15,17	0.68	0
2	BMA	B	4	2	11,11,12	0.62	0	15,15,17	1.11	1 (6%)
2	BMA	B	5	2	11,11,12	0.97	1 (9%)	15,15,17	2.09	2 (13%)

In the following table, the Chirals column lists the number of chiral outliers, the number of chiral centers analysed, the number of these observed in the model and the number defined in the Chemical Component Dictionary. Similar counts are reported in the Torsion and Rings columns. '-' means no outliers of that kind were identified.

Mol	Type	Chain	Res	Link	Chirals	Torsions	Rings
2	NAG	B	1	1,2	-	2/6/23/26	0/1/1/1

*Continued on next page...*

*Continued from previous page...*

Mol	Type	Chain	Res	Link	Chirals	Torsions	Rings
2	NAG	B	2	2	-	3/6/23/26	0/1/1/1
2	BMA	B	3	2	1/1/4/5	0/2/19/22	1/1/1/1
2	BMA	B	4	2	1/1/4/5	2/2/19/22	0/1/1/1
2	BMA	B	5	2	1/1/4/5	2/2/19/22	0/1/1/1

All (1) bond length outliers are listed below:

Mol	Chain	Res	Type	Atoms	Z	Observed(Å)	Ideal(Å)
2	B	5	BMA	C1-C2	2.31	1.57	1.52

All (4) bond angle outliers are listed below:

Mol	Chain	Res	Type	Atoms	Z	Observed(°)	Ideal(°)
2	B	5	BMA	C1-C2-C3	6.58	117.75	109.67
2	B	4	BMA	C1-C2-C3	3.07	113.44	109.67
2	B	5	BMA	C1-O5-C5	2.97	116.21	112.19
2	B	1	NAG	C4-C3-C2	-2.21	107.78	111.02

All (3) chirality outliers are listed below:

Mol	Chain	Res	Type	Atom
2	B	3	BMA	C1
2	B	4	BMA	C1
2	B	5	BMA	C1

All (9) torsion outliers are listed below:

Mol	Chain	Res	Type	Atoms
2	B	2	NAG	C3-C2-N2-C7
2	B	4	BMA	C4-C5-C6-O6
2	B	2	NAG	O5-C5-C6-O6
2	B	4	BMA	O5-C5-C6-O6
2	B	2	NAG	C4-C5-C6-O6
2	B	5	BMA	C4-C5-C6-O6
2	B	5	BMA	O5-C5-C6-O6
2	B	1	NAG	C1-C2-N2-C7
2	B	1	NAG	C3-C2-N2-C7

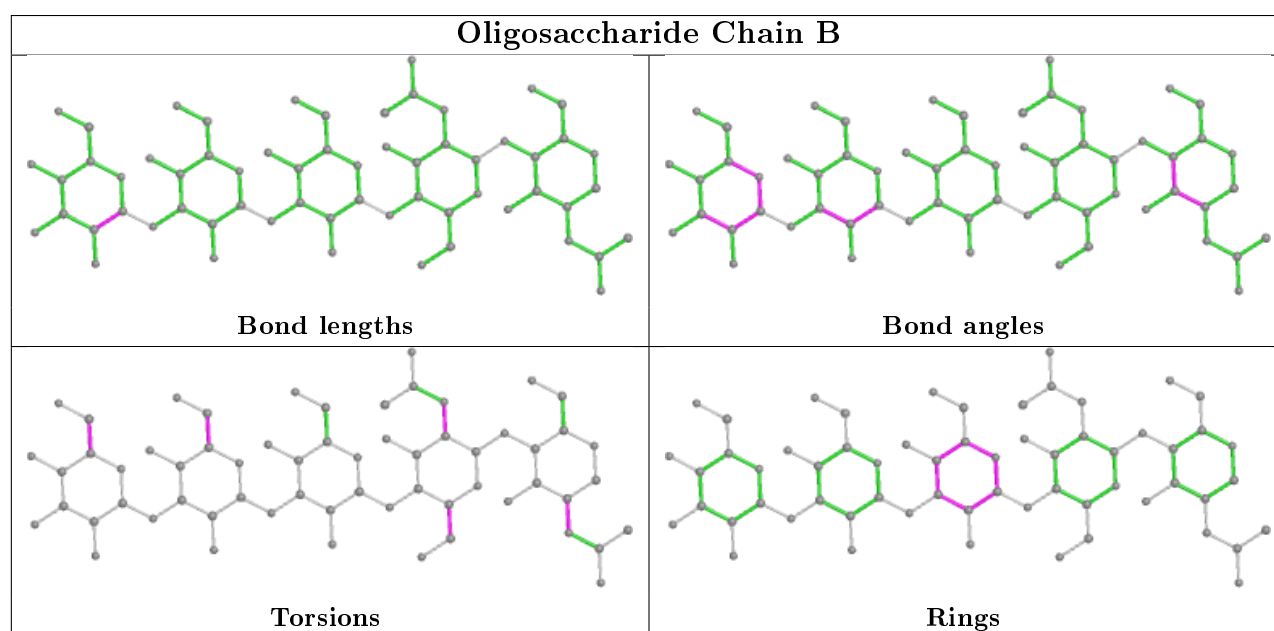
All (1) ring outliers are listed below:

Mol	Chain	Res	Type	Atoms
2	B	3	BMA	C1-C2-C3-C4-C5-O5

4 monomers are involved in 9 short contacts:

Mol	Chain	Res	Type	Clashes	Symm-Clashes
2	B	4	BMA	3	0
2	B	5	BMA	4	0
2	B	3	BMA	2	0
2	B	2	NAG	3	0

The following is a two-dimensional graphical depiction of Mogul quality analysis of bond lengths, bond angles, torsion angles, and ring geometry for oligosaccharide.



## 5.6 Ligand geometry [i](#)

1 ligand is modelled in this entry.

In the following table, the Counts columns list the number of bonds (or angles) for which Mogul statistics could be retrieved, the number of bonds (or angles) that are observed in the model and the number of bonds (or angles) that are defined in the Chemical Component Dictionary. The Link column lists molecule types, if any, to which the group is linked. The Z score for a bond length (or angle) is the number of standard deviations the observed value is removed from the expected value. A bond length (or angle) with  $|Z| > 2$  is considered an outlier worth inspection. RMSZ is the root-mean-square of all Z scores of the bond lengths (or angles).

Mol	Type	Chain	Res	Link	Bond lengths			Bond angles		
					Counts	RMSZ	$\# Z  > 2$	Counts	RMSZ	$\# Z  > 2$
3	NAG	A	601	1	14,14,15	0.61	0	17,19,21	1.21	2 (11%)

In the following table, the Chirals column lists the number of chiral outliers, the number of chiral centers analysed, the number of these observed in the model and the number defined in the Chemical Component Dictionary. Similar counts are reported in the Torsion and Rings columns. '-' means no outliers of that kind were identified.

Mol	Type	Chain	Res	Link	Chirals	Torsions	Rings
3	NAG	A	601	1	1/1/5/7	2/6/23/26	0/1/1/1

There are no bond length outliers.

All (2) bond angle outliers are listed below:

Mol	Chain	Res	Type	Atoms	Z	Observed(°)	Ideal(°)
3	A	601	NAG	O5-C1-C2	-3.19	106.26	111.29
3	A	601	NAG	C2-N2-C7	-2.28	119.66	122.90

All (1) chirality outliers are listed below:

Mol	Chain	Res	Type	Atom
3	A	601	NAG	C1

All (2) torsion outliers are listed below:

Mol	Chain	Res	Type	Atoms
3	A	601	NAG	C4-C5-C6-O6
3	A	601	NAG	O5-C5-C6-O6

There are no ring outliers.

1 monomer is involved in 3 short contacts:

Mol	Chain	Res	Type	Clashes	Symm-Clashes
3	A	601	NAG	3	0

## 5.7 Other polymers [i](#)

There are no such residues in this entry.

## 5.8 Polymer linkage issues [i](#)

There are no chain breaks in this entry.

## 6 Fit of model and data ⓘ

### 6.1 Protein, DNA and RNA chains ⓘ

In the following table, the column labelled ‘#RSRZ> 2’ contains the number (and percentage) of RSRZ outliers, followed by percent RSRZ outliers for the chain as percentile scores relative to all X-ray entries and entries of similar resolution. The OWAB column contains the minimum, median, 95<sup>th</sup> percentile and maximum values of the occupancy-weighted average B-factor per residue. The column labelled ‘Q< 0.9’ lists the number of (and percentage) of residues with an average occupancy less than 0.9.

Mol	Chain	Analysed	<RSRZ>	#RSRZ>2	OWAB(Å <sup>2</sup> )	Q<0.9
1	A	540/585 (92%)	0.31	22 (4%) 37 36	27, 55, 88, 100	4 (0%)

All (22) RSRZ outliers are listed below:

Mol	Chain	Res	Type	RSRZ
1	A	136	ASN	5.5
1	A	137	THR	5.3
1	A	574	ALA	4.3
1	A	297	LEU	3.7
1	A	299	THR	3.6
1	A	78	SER	3.5
1	A	525	ASP	3.2
1	A	573	TRP	3.1
1	A	79	GLY	3.0
1	A	54	HIS	2.8
1	A	139	ASN	2.7
1	A	75	PRO	2.6
1	A	503	ARG	2.5
1	A	501	VAL	2.5
1	A	424	GLY	2.4
1	A	384	ASP	2.3
1	A	499	ARG	2.3
1	A	164	ALA	2.2
1	A	544	THR	2.2
1	A	76	GLY	2.1
1	A	86	ASN	2.1
1	A	477	GLY	2.0

### 6.2 Non-standard residues in protein, DNA, RNA chains ⓘ

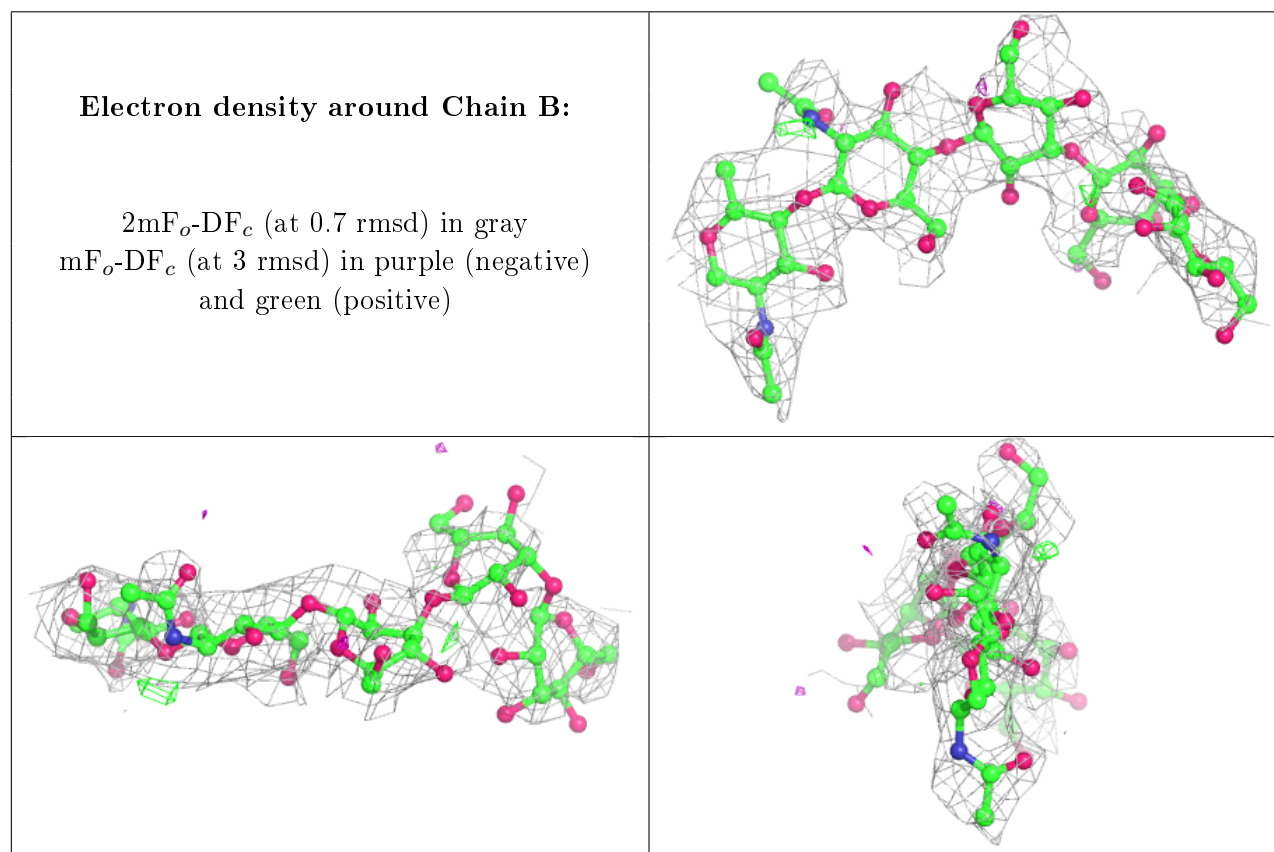
There are no non-standard protein/DNA/RNA residues in this entry.

### 6.3 Carbohydrates [i](#)

In the following table, the Atoms column lists the number of modelled atoms in the group and the number defined in the chemical component dictionary. The B-factors column lists the minimum, median, 95<sup>th</sup> percentile and maximum values of B factors of atoms in the group. The column labelled 'Q< 0.9' lists the number of atoms with occupancy less than 0.9.

Mol	Type	Chain	Res	Atoms	RSCC	RSR	B-factors(Å <sup>2</sup> )	Q<0.9
2	BMA	B	4	11/12	0.68	0.38	95,97,97,99	11
2	BMA	B	3	11/12	0.79	0.32	95,97,98,99	0
2	BMA	B	5	11/12	0.80	0.34	93,94,94,95	11
2	NAG	B	2	14/15	0.81	0.22	82,88,92,93	0
2	NAG	B	1	14/15	0.90	0.15	65,69,72,77	0

The following is a graphical depiction of the model fit to experimental electron density for oligosaccharide. Each fit is shown from different orientation to approximate a three-dimensional view.



### 6.4 Ligands [i](#)

In the following table, the Atoms column lists the number of modelled atoms in the group and the number defined in the chemical component dictionary. The B-factors column lists the minimum, median, 95<sup>th</sup> percentile and maximum values of B factors of atoms in the group. The column labelled 'Q< 0.9' lists the number of atoms with occupancy less than 0.9.



Mol	Type	Chain	Res	Atoms	RSCC	RSR	B-factors( $\text{\AA}^2$ )	Q<0.9
3	NAG	A	601	14/15	0.52	0.39	69,73,74,75	14

## 6.5 Other polymers [i](#)

There are no such residues in this entry.