



wwPDB X-ray Structure Validation Summary Report ⓘ

May 15, 2020 – 07:51 pm BST

PDB ID : 1QOV
Title : PHOTOSYNTHETIC REACTION CENTER MUTANT WITH ALA M260
REPLACED WITH TRP (CHAIN M, A260W)
Authors : McAuley, K.E.; Fyfe, P.K.; Ridge, J.P.; Isaacs, N.W.; Cogdell, R.J.; Jones,
M.R.
Deposited on : 1999-11-17
Resolution : 2.10 Å(reported)

This is a wwPDB X-ray Structure Validation Summary Report for a publicly released PDB entry.

We welcome your comments at validation@mail.wwpdb.org

A user guide is available at

<https://www.wwpdb.org/validation/2017/XrayValidationReportHelp>

with specific help available everywhere you see the ⓘ symbol.

The following versions of software and data (see [references ⓘ](#)) were used in the production of this report:

MolProbity : 4.02b-467
Mogul : 1.8.5 (274361), CSD as541be (2020)
Xtriage (Phenix) : **NOT EXECUTED**
EDS : **NOT EXECUTED**
buster-report : 1.1.7 (2018)
Percentile statistics : 20191225.v01 (using entries in the PDB archive December 25th 2019)
Ideal geometry (proteins) : Engh & Huber (2001)
Ideal geometry (DNA, RNA) : Parkinson et al. (1996)
Validation Pipeline (wwPDB-VP) : 2.11

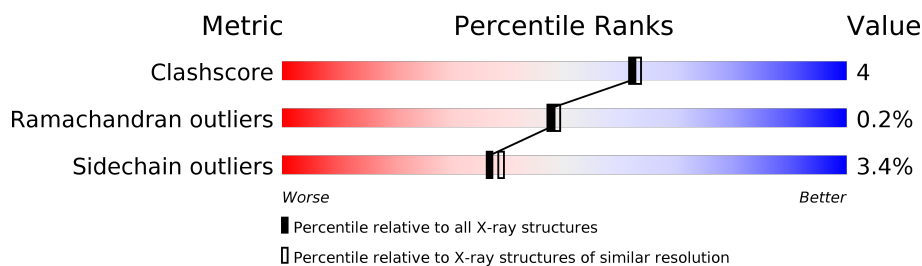
1 Overall quality at a glance

The following experimental techniques were used to determine the structure:

X-RAY DIFFRACTION

The reported resolution of this entry is 2.10 Å.

Percentile scores (ranging between 0-100) for global validation metrics of the entry are shown in the following graphic. The table shows the number of entries on which the scores are based.



Metric	Whole archive (#Entries)	Similar resolution (#Entries, resolution range(Å))
Clashscore	141614	5710 (2.10-2.10)
Ramachandran outliers	138981	5647 (2.10-2.10)
Sidechain outliers	138945	5648 (2.10-2.10)

The table below summarises the geometric issues observed across the polymeric chains and their fit to the electron density. The red, orange, yellow and green segments on the lower bar indicate the fraction of residues that contain outliers for ≥ 3 , 2, 1 and 0 types of geometric quality criteria respectively. A grey segment represents the fraction of residues that are not modelled. The numeric value for each fraction is indicated below the corresponding segment, with a dot representing fractions $\leq 5\%$.

Note EDS was not executed.

Mol	Chain	Length	Quality of chain
1	H	260	
2	L	281	
3	M	307	

The following table lists non-polymeric compounds, carbohydrate monomers and non-standard residues in protein, DNA, RNA chains that are outliers for geometric or electron-density-fit criteria:

Mol	Type	Chain	Res	Chirality	Geometry	Clashes	Electron density
4	BCL	M	1301	X	-	-	-
6	BPH	M	1401	X	-	-	-

2 Entry composition

There are 11 unique types of molecules in this entry. The entry contains 7312 atoms, of which 0 are hydrogens and 0 are deuteriums.

In the tables below, the ZeroOcc column contains the number of atoms modelled with zero occupancy, the AltConf column contains the number of residues with at least one atom in alternate conformation and the Trace column contains the number of residues modelled with at most 2 atoms.

- Molecule 1 is a protein called PHOTOSYNTHETIC REACTION CENTER.

Mol	Chain	Residues	Atoms					ZeroOcc	AltConf	Trace
1	H	240	Total	C	N	O	S	0	0	0
			1829	1169	314	337	9			

- Molecule 2 is a protein called PHOTOSYNTHETIC REACTION CENTER.

Mol	Chain	Residues	Atoms					ZeroOcc	AltConf	Trace
2	L	281	Total	C	N	O	S	0	1	0
			2235	1509	355	363	8			

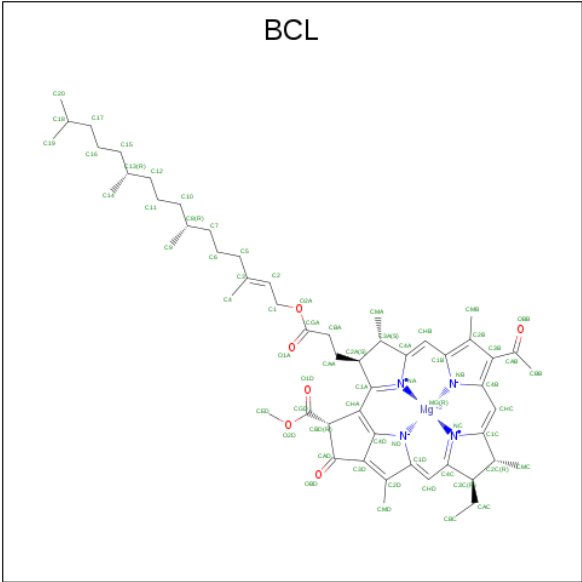
- Molecule 3 is a protein called PHOTOSYNTHETIC REACTION CENTER.

Mol	Chain	Residues	Atoms					ZeroOcc	AltConf	Trace
3	M	302	Total	C	N	O	S	0	2	0
			2430	1622	401	397	10			

There is a discrepancy between the modelled and reference sequences:

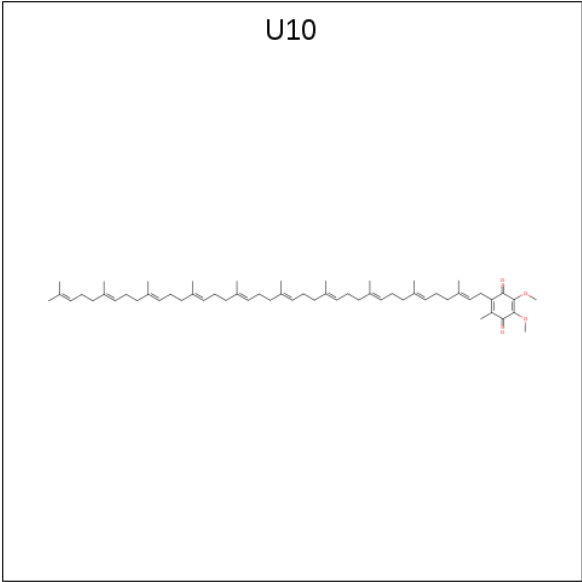
Chain	Residue	Modelled	Actual	Comment	Reference
M	260	TRP	ALA	engineered mutation	UNP P02953

- Molecule 4 is BACTERIOCHLOROPHYLL A (three-letter code: BCL) (formula: C₅₅H₇₄MgN₄O₆).



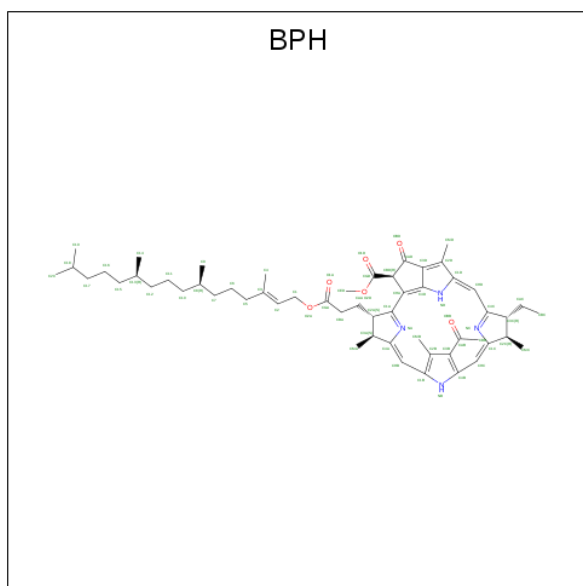
Mol	Chain	Residues	Atoms					ZeroOcc	AltConf
4	L	1	Total 66	C 55	Mg 1	N 4	O 6	0	0
4	L	1	Total 66	C 55	Mg 1	N 4	O 6	0	0
4	L	1	Total 66	C 55	Mg 1	N 4	O 6	0	0
4	M	1	Total 66	C 55	Mg 1	N 4	O 6	0	0

- Molecule 5 is UBIQUINONE-10 (three-letter code: U10) (formula: C₅₉H₉₀O₄).



Mol	Chain	Residues	Atoms			ZeroOcc	AltConf
5	L	1	Total	C	O	0	0
			48	44	4		

- Molecule 6 is BACTERIOPHEOPHYTIN A (three-letter code: BPH) (formula: $C_{55}H_{76}N_4O_6$).

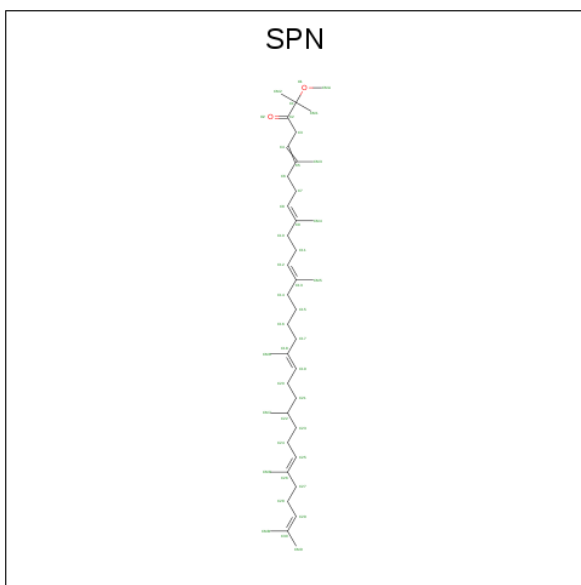


Mol	Chain	Residues	Atoms				ZeroOcc	AltConf
6	M	1	Total	C	N	O	10	0
			65	55	4	6		
6	M	1	Total	C	N	O	0	0
			65	55	4	6		

- Molecule 7 is FE (II) ION (three-letter code: FE2) (formula: Fe).

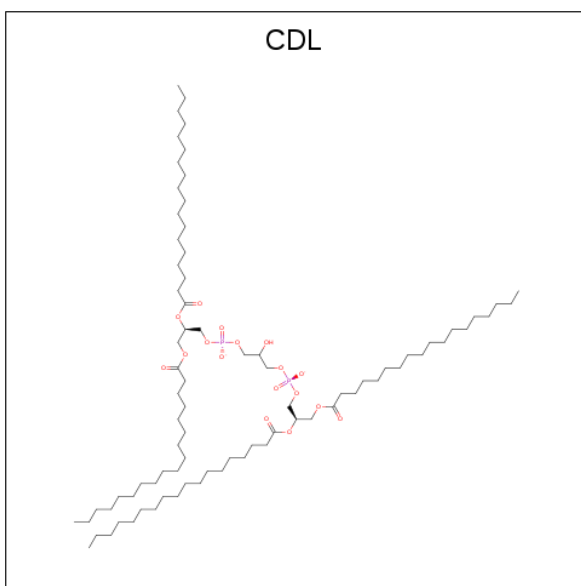
Mol	Chain	Residues	Atoms		ZeroOcc	AltConf
7	M	1	Total	Fe	0	0
			1	1		

- Molecule 8 is SPEROIDENONE (three-letter code: SPN) (formula: $C_{41}H_{70}O_2$).



Mol	Chain	Residues	Atoms			ZeroOcc	AltConf
8	M	1	Total	C	O	0	0
			43	41	2		

- Molecule 9 is CARDIOLIPIN (three-letter code: CDL) (formula: $C_{81}H_{156}O_{17}P_2$).



Mol	Chain	Residues	Atoms				ZeroOcc	AltConf
9	M	1	Total	C	O	P	0	0
			81	62	17	2		

- Molecule 10 is CHLORIDE ION (three-letter code: CL) (formula: Cl).

Mol	Chain	Residues	Atoms		ZeroOcc	AltConf
10	M	1	Total 1	Cl 1	0	0

- Molecule 11 is water.


Mol	Chain	Residues	Atoms		ZeroOcc	AltConf
11	H	118	Total 118	O 118	0	0
11	L	59	Total 59	O 59	0	0
11	M	73	Total 73	O 73	0	0

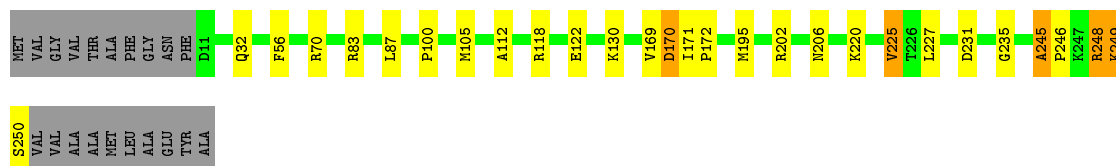
3 Residue-property plots [i](#)

These plots are drawn for all protein, RNA and DNA chains in the entry. The first graphic for a chain summarises the proportions of the various outlier classes displayed in the second graphic. The second graphic shows the sequence view annotated by issues in geometry. Residues are color-coded according to the number of geometric quality criteria for which they contain at least one outlier: green = 0, yellow = 1, orange = 2 and red = 3 or more. Stretches of 2 or more consecutive residues without any outlier are shown as a green connector. Residues present in the sample, but not in the model, are shown in grey.

Note EDS was not executed.

• Molecule 1: PHOTOSYNTHETIC REACTION CENTER

Chain H: 



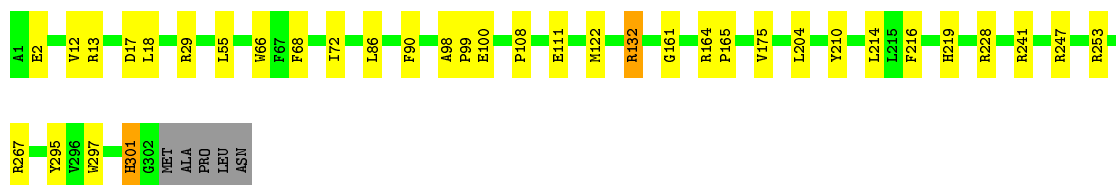
• Molecule 2: PHOTOSYNTHETIC REACTION CENTER

Chain L: 



• Molecule 3: PHOTOSYNTHETIC REACTION CENTER

Chain M: 



4 Data and refinement statistics

Xtriage (Phenix) and EDS were not executed - this section is therefore incomplete.

Property	Value	Source
Space group	P 31 2 1	Depositor
Cell constants a, b, c, α , β , γ	142.05Å 142.05Å 186.81Å 90.00° 90.00° 120.00°	Depositor
Resolution (Å)	30.00 – 2.10	Depositor
% Data completeness (in resolution range)	97.6 (30.00-2.10)	Depositor
R_{merge}	0.06	Depositor
R_{sym}	(Not available)	Depositor
Refinement program	REFMAC	Depositor
R, R_{free}	0.169 , 0.186	Depositor
Estimated twinning fraction	No twinning to report.	Xtriage
Total number of atoms	7312	wwPDB-VP
Average B, all atoms (Å ²)	40.0	wwPDB-VP

5 Model quality ⓘ

5.1 Standard geometry ⓘ

Bond lengths and bond angles in the following residue types are not validated in this section: BCL, CL, CDL, BPH, FE2, SPN, U10

The Z score for a bond length (or angle) is the number of standard deviations the observed value is removed from the expected value. A bond length (or angle) with $|Z| > 5$ is considered an outlier worth inspection. RMSZ is the root-mean-square of all Z scores of the bond lengths (or angles).

Mol	Chain	Bond lengths		Bond angles	
		RMSZ	$\# Z > 5$	RMSZ	$\# Z > 5$
1	H	0.60	0/1877	1.28	14/2553 (0.5%)
2	L	0.61	0/2326	1.08	11/3183 (0.3%)
3	M	0.57	0/2533	1.19	20/3457 (0.6%)
All	All	0.59	0/6736	1.18	45/9193 (0.5%)

There are no bond length outliers.

The worst 5 of 45 bond angle outliers are listed below:

Mol	Chain	Res	Type	Atoms	Z	Observed(°)	Ideal(°)
3	M	253[A]	ARG	NE-CZ-NH2	-14.39	113.10	120.30
3	M	253[B]	ARG	NE-CZ-NH2	-14.39	113.10	120.30
1	H	83	ARG	CD-NE-CZ	14.06	143.28	123.60
1	H	248	ARG	NE-CZ-NH1	13.96	127.28	120.30
1	H	248	ARG	CD-NE-CZ	12.23	140.72	123.60

There are no chirality outliers.

There are no planarity outliers.

5.2 Too-close contacts ⓘ

In the following table, the Non-H and H(model) columns list the number of non-hydrogen atoms and hydrogen atoms in the chain respectively. The H(added) column lists the number of hydrogen atoms added and optimized by MolProbity. The Clashes column lists the number of clashes within the asymmetric unit, whereas Symm-Clashes lists symmetry related clashes.

Mol	Chain	Non-H	H(model)	H(added)	Clashes	Symm-Clashes
1	H	1829	0	1836	17	0
2	L	2235	0	2192	9	0
3	M	2430	0	2344	17	0

Continued on next page...

Continued from previous page...

Mol	Chain	Non-H	H(model)	H(added)	Clashes	Symm-Clashes
4	L	198	0	222	8	0
4	M	66	0	71	7	0
5	L	48	0	62	11	0
6	M	130	0	145	2	0
7	M	1	0	0	0	0
8	M	43	0	69	2	0
9	M	81	0	106	0	0
10	M	1	0	0	1	0
11	H	118	0	0	2	0
11	L	59	0	0	0	0
11	M	73	0	0	1	0
All	All	7312	0	7047	62	0

The all-atom clashscore is defined as the number of clashes found per 1000 atoms (including hydrogen atoms). The all-atom clashscore for this structure is 4.

The worst 5 of 62 close contacts within the same asymmetric unit are listed below, sorted by their clash magnitude.

Atom-1	Atom-2	Interatomic distance (Å)	Clash overlap (Å)
5:L:1502:U10:H301	5:L:1502:U10:H38	1.29	1.07
5:L:1502:U10:C30	5:L:1502:U10:H38	1.80	0.94
5:L:1502:U10:H301	5:L:1502:U10:C38	2.03	0.87
5:L:1502:U10:H371	4:M:1301:BCL:HED2	1.63	0.80
5:L:1502:U10:H351	3:M:90:PHE:HE2	1.54	0.71

There are no symmetry-related clashes.

5.3 Torsion angles [i](#)

5.3.1 Protein backbone [i](#)

In the following table, the Percentiles column shows the percent Ramachandran outliers of the chain as a percentile score with respect to all X-ray entries followed by that with respect to entries of similar resolution.

The Analysed column shows the number of residues for which the backbone conformation was analysed, and the total number of residues.

Mol	Chain	Analysed	Favoured	Allowed	Outliers	Percentiles
1	H	238/260 (92%)	235 (99%)	2 (1%)	1 (0%)	34 32

Continued on next page...

Continued from previous page...

Mol	Chain	Analysed	Favoured	Allowed	Outliers	Percentiles	
2	L	280/281 (100%)	275 (98%)	5 (2%)	0	100	100
3	M	302/307 (98%)	292 (97%)	9 (3%)	1 (0%)	41	41
All	All	820/848 (97%)	802 (98%)	16 (2%)	2 (0%)	47	49

All (2) Ramachandran outliers are listed below:

Mol	Chain	Res	Type
3	M	301	HIS
1	H	245	ALA

5.3.2 Protein sidechains ⓘ

In the following table, the Percentiles column shows the percent sidechain outliers of the chain as a percentile score with respect to all X-ray entries followed by that with respect to entries of similar resolution.

The Analysed column shows the number of residues for which the sidechain conformation was analysed, and the total number of residues.

Mol	Chain	Analysed	Rotameric	Outliers	Percentiles	
1	H	195/208 (94%)	191 (98%)	4 (2%)	53	59
2	L	221/220 (100%)	210 (95%)	11 (5%)	24	23
3	M	239/241 (99%)	232 (97%)	7 (3%)	42	46
All	All	655/669 (98%)	633 (97%)	22 (3%)	37	39

5 of 22 residues with a non-rotameric sidechain are listed below:

Mol	Chain	Res	Type
2	L	207	ARG
2	L	267	VAL
3	M	204	LEU
2	L	210	ASP
2	L	247	CYS

Some sidechains can be flipped to improve hydrogen bonding and reduce clashes. All (4) such sidechains are listed below:

Mol	Chain	Res	Type
1	H	32	GLN
1	H	206	ASN

Continued on next page...

Continued from previous page...

Mol	Chain	Res	Type
3	M	188	ASN
3	M	299	GLN

5.3.3 RNA ⓘ

There are no RNA molecules in this entry.

5.4 Non-standard residues in protein, DNA, RNA chains ⓘ

There are no non-standard protein/DNA/RNA residues in this entry.

5.5 Carbohydrates ⓘ

There are no carbohydrates in this entry.

5.6 Ligand geometry ⓘ

Of 11 ligands modelled in this entry, 2 are monoatomic - leaving 9 for Mogul analysis.

In the following table, the Counts columns list the number of bonds (or angles) for which Mogul statistics could be retrieved, the number of bonds (or angles) that are observed in the model and the number of bonds (or angles) that are defined in the Chemical Component Dictionary. The Link column lists molecule types, if any, to which the group is linked. The Z score for a bond length (or angle) is the number of standard deviations the observed value is removed from the expected value. A bond length (or angle) with $|Z| > 2$ is considered an outlier worth inspection. RMSZ is the root-mean-square of all Z scores of the bond lengths (or angles).

Mol	Type	Chain	Res	Link	Bond lengths			Bond angles		
					Counts	RMSZ	# $ Z > 2$	Counts	RMSZ	# $ Z > 2$
4	BCL	L	1303	3	58,74,74	1.78	10 (17%)	69,115,115	2.68	20 (28%)
4	BCL	L	1304	2	58,74,74	1.64	14 (24%)	69,115,115	2.22	23 (33%)
5	U10	L	1502	-	48,48,63	1.79	11 (22%)	58,61,79	2.79	18 (31%)
6	BPH	M	1401	-	64,70,70	1.43	7 (10%)	76,101,101	2.19	25 (32%)
4	BCL	M	1301	3	58,74,74	1.58	10 (17%)	69,115,115	2.55	27 (39%)
9	CDL	M	1800	-	80,80,99	0.48	0	86,92,111	0.93	5 (5%)
6	BPH	M	1402	-	64,70,70	1.30	8 (12%)	76,101,101	1.92	19 (25%)
8	SPN	M	1600	-	40,42,42	3.75	18 (45%)	50,52,52	2.58	16 (32%)
4	BCL	L	1302	2	58,74,74	1.68	10 (17%)	69,115,115	2.51	22 (31%)

In the following table, the Chirals column lists the number of chiral outliers, the number of chiral centers analysed, the number of these observed in the model and the number defined in the Chemical Component Dictionary. Similar counts are reported in the Torsion and Rings columns. '-' means no outliers of that kind were identified.

Mol	Type	Chain	Res	Link	Chirals	Torsions	Rings
4	BCL	L	1303	3	-	3/37/137/137	-
4	BCL	L	1304	2	-	8/37/137/137	-
5	U10	L	1502	-	-	10/45/69/87	0/1/1/1
6	BPH	M	1401	-	2/2/18/22	18/54/105/105	0/5/6/6
4	BCL	M	1301	3	2/2/21/25	15/37/137/137	-
9	CDL	M	1800	-	-	30/91/91/110	-
6	BPH	M	1402	-	-	5/54/105/105	0/5/6/6
8	SPN	M	1600	-	-	19/50/51/51	-
4	BCL	L	1302	2	-	6/37/137/137	-

The worst 5 of 88 bond length outliers are listed below:

Mol	Chain	Res	Type	Atoms	Z	Observed(Å)	Ideal(Å)
8	M	1600	SPN	C4-C5	8.89	1.54	1.33
8	M	1600	SPN	C19-C18	8.77	1.54	1.33
8	M	1600	SPN	C8-C9	8.48	1.53	1.33
8	M	1600	SPN	C12-C13	8.17	1.52	1.33
8	M	1600	SPN	C3-C4	-6.51	1.41	1.50

The worst 5 of 175 bond angle outliers are listed below:

Mol	Chain	Res	Type	Atoms	Z	Observed(°)	Ideal(°)
5	L	1502	U10	C32-C33-C34	14.63	162.88	127.66
4	L	1303	BCL	C1C-NC-C4C	12.00	112.10	106.71
4	L	1303	BCL	C4A-NA-C1A	10.58	111.46	106.71
4	L	1302	BCL	C1C-NC-C4C	9.94	111.17	106.71
4	L	1302	BCL	C4A-NA-C1A	9.01	110.76	106.71

All (4) chirality outliers are listed below:

Mol	Chain	Res	Type	Atom
6	M	1401	BPH	C8
6	M	1401	BPH	C13
4	M	1301	BCL	C8
4	M	1301	BCL	C13

5 of 114 torsion outliers are listed below:

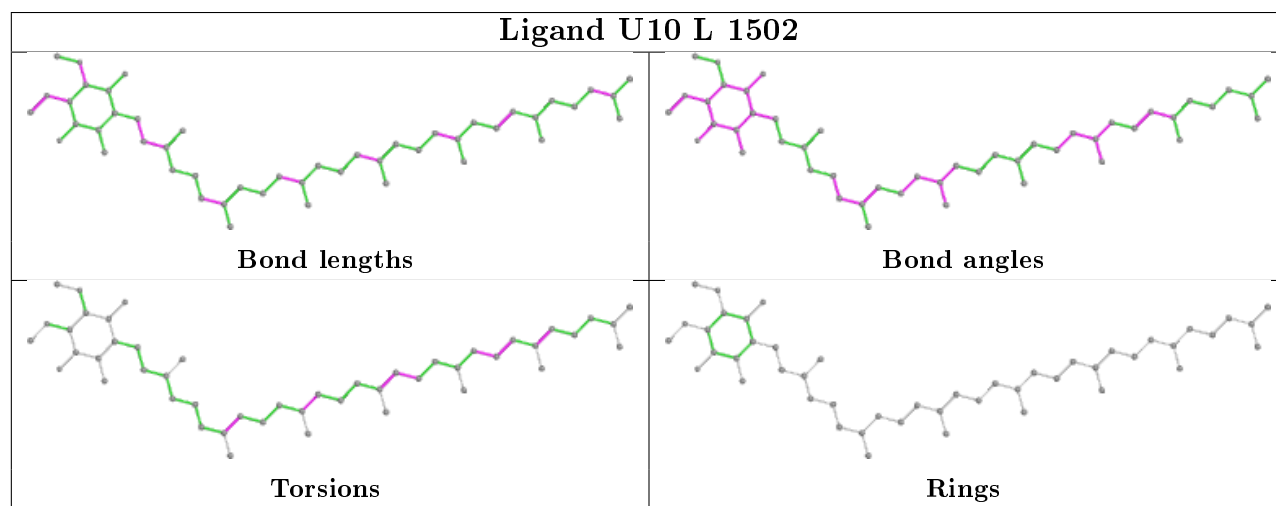
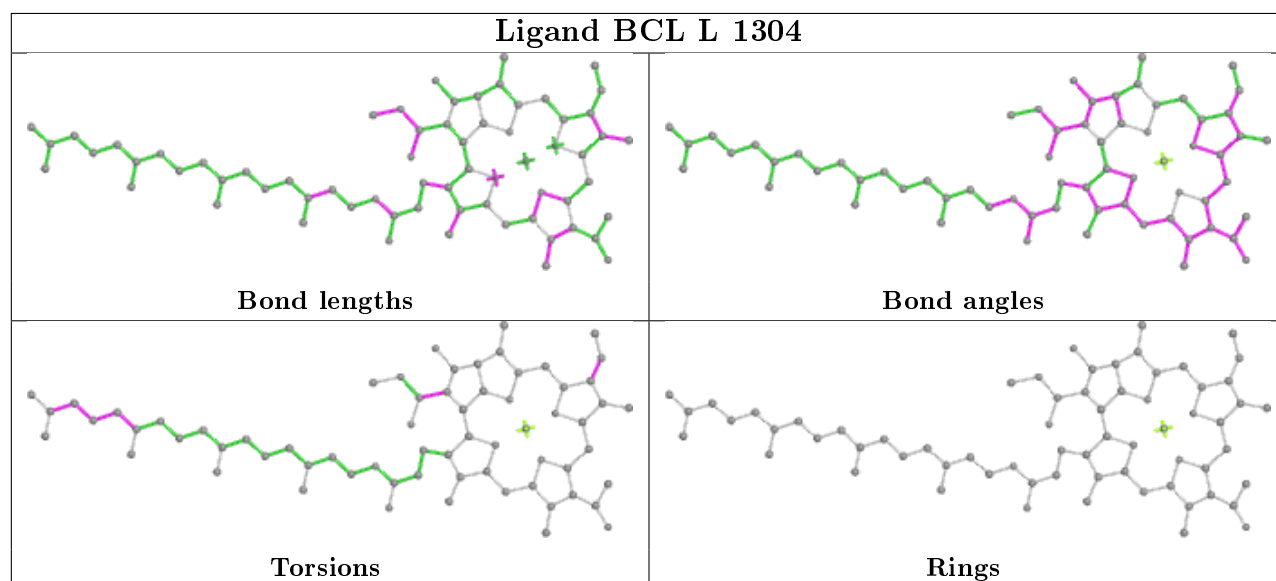
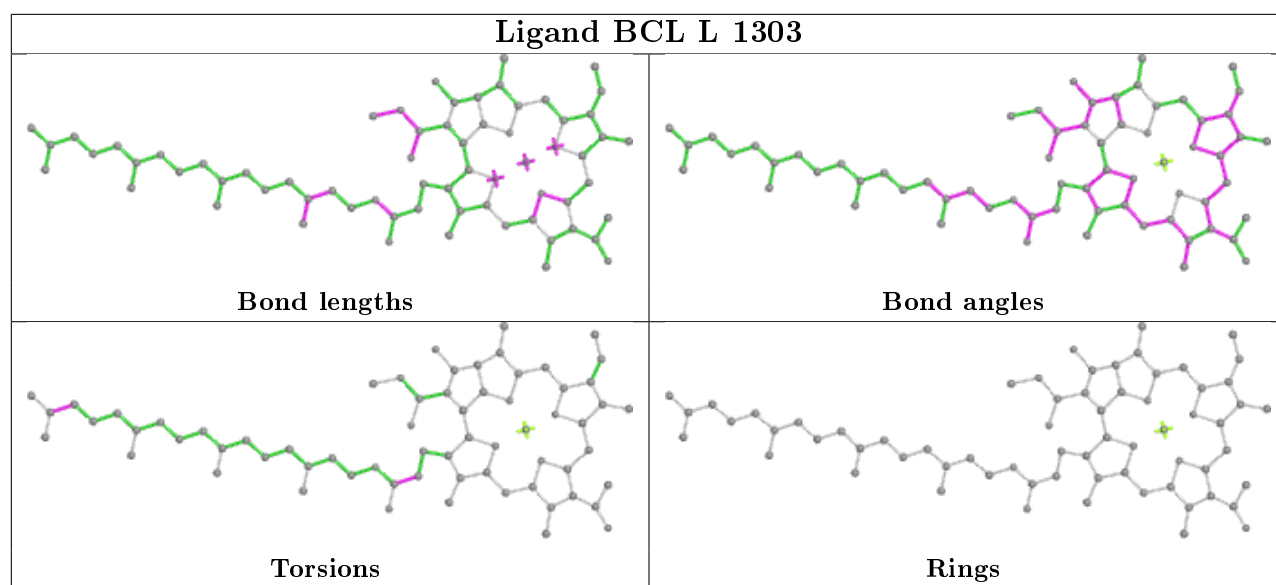
Mol	Chain	Res	Type	Atoms
5	L	1502	U10	C29-C31-C32-C33
5	L	1502	U10	C31-C32-C33-C34
6	M	1401	BPH	C4B-C3B-CAB-CBB
6	M	1401	BPH	C4B-C3B-CAB-OB
6	M	1401	BPH	C2B-C3B-CAB-CBB

There are no ring outliers.

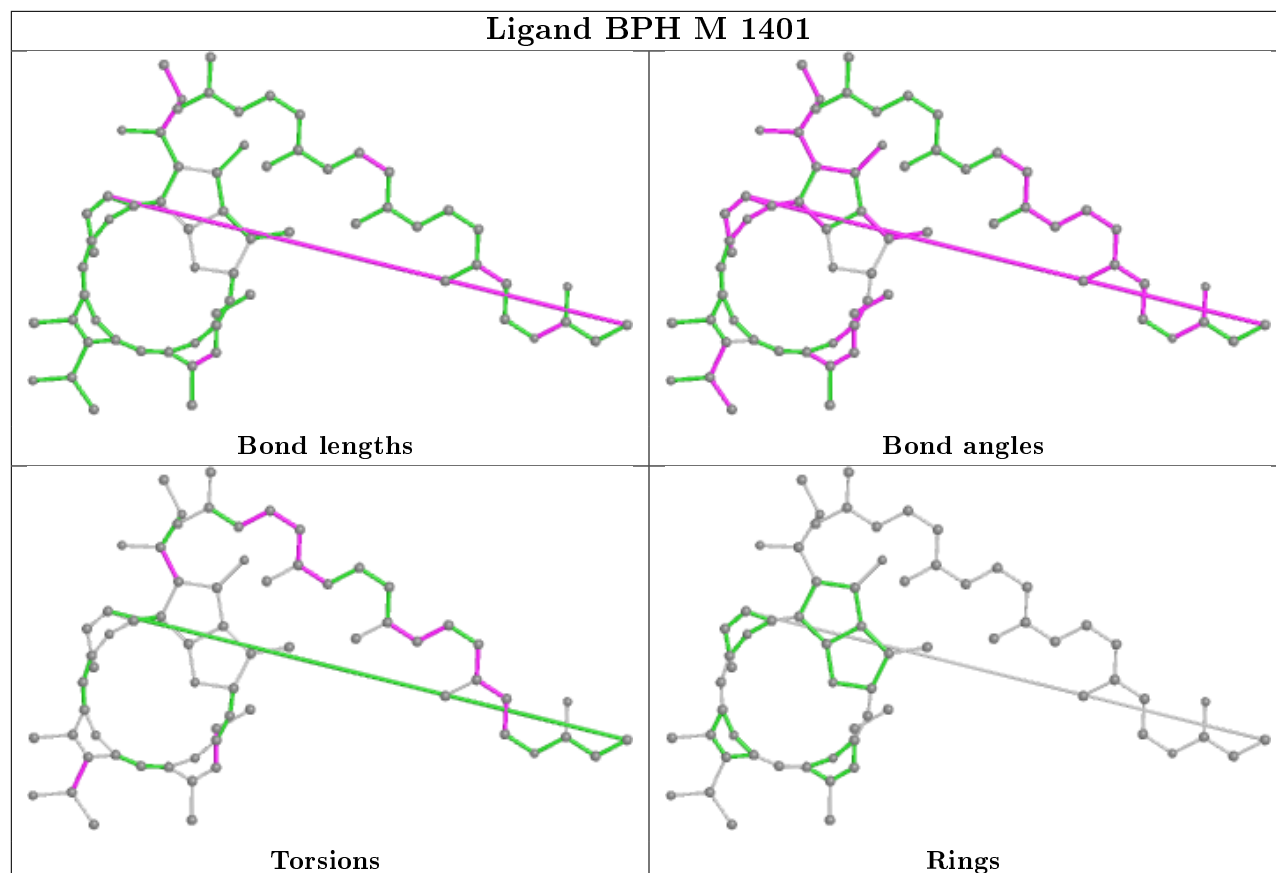
7 monomers are involved in 27 short contacts:

Mol	Chain	Res	Type	Clashes	Symm-Clashes
4	L	1303	BCL	3	0
4	L	1304	BCL	2	0
5	L	1502	U10	11	0
4	M	1301	BCL	7	0
6	M	1402	BPH	2	0
8	M	1600	SPN	2	0
4	L	1302	BCL	3	0

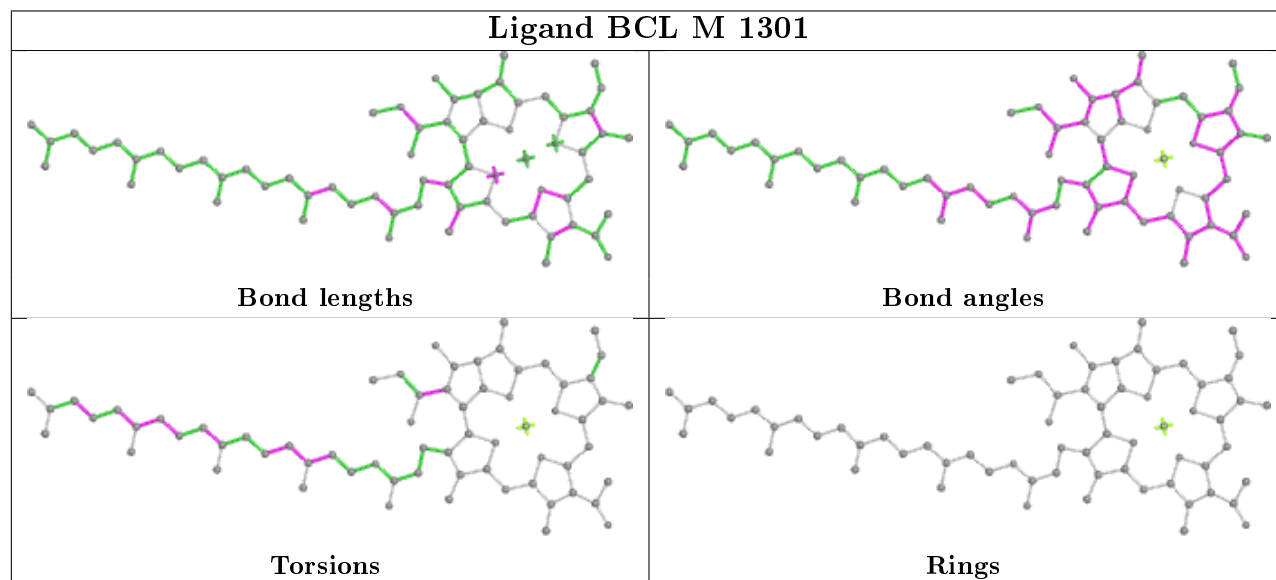
The following is a two-dimensional graphical depiction of Mogul quality analysis of bond lengths, bond angles, torsion angles, and ring geometry for all instances of the Ligand of Interest. In addition, ligands with molecular weight > 250 and outliers as shown on the validation Tables will also be included. For torsion angles, if less than 5% of the Mogul distribution of torsion angles is within 10 degrees of the torsion angle in question, then that torsion angle is considered an outlier. Any bond that is central to one or more torsion angles identified as an outlier by Mogul will be highlighted in the graph. For rings, the root-mean-square deviation (RMSD) between the ring in question and similar rings identified by Mogul is calculated over all ring torsion angles. If the average RMSD is greater than 60 degrees and the minimal RMSD between the ring in question and any Mogul-identified rings is also greater than 60 degrees, then that ring is considered an outlier. The outliers are highlighted in purple. The color gray indicates Mogul did not find sufficient equivalents in the CSD to analyse the geometry.

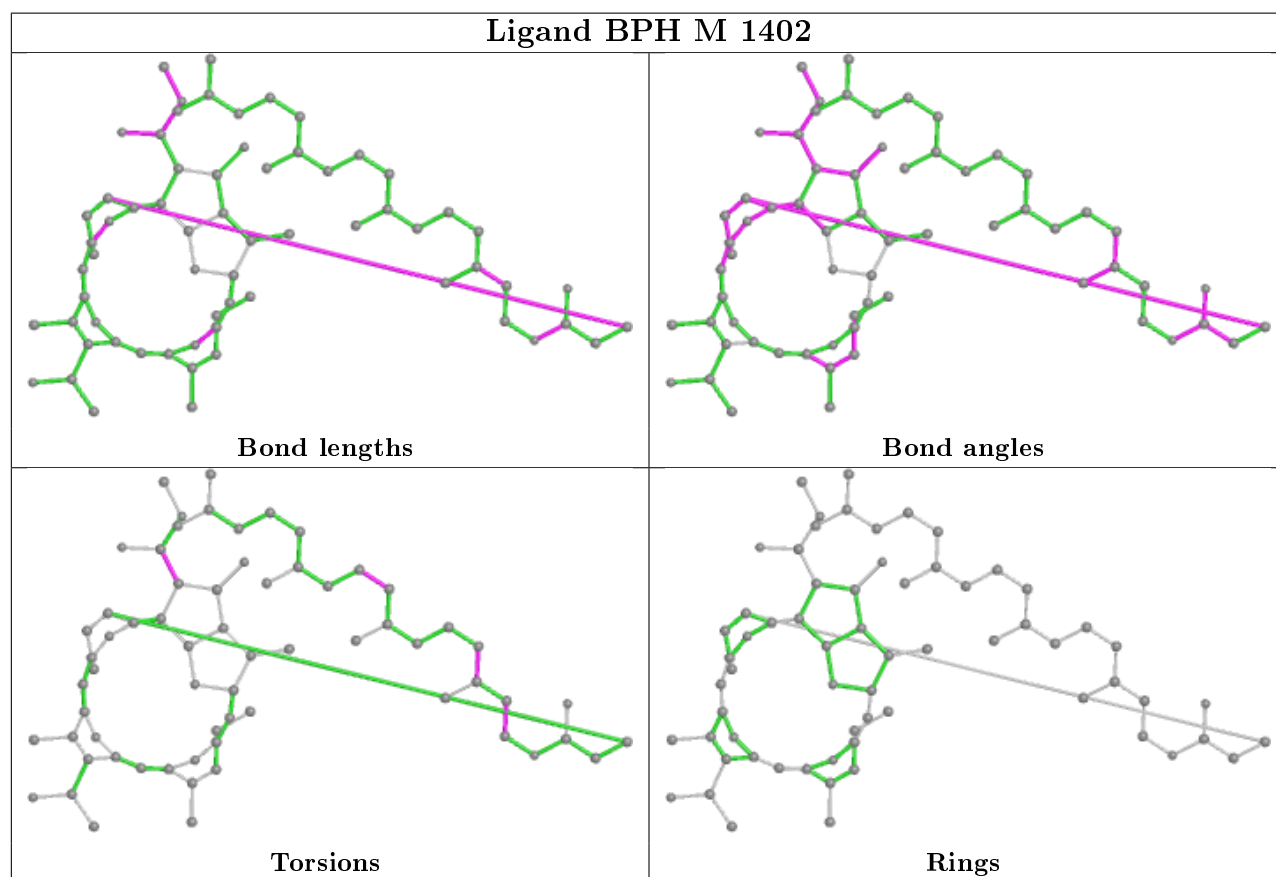
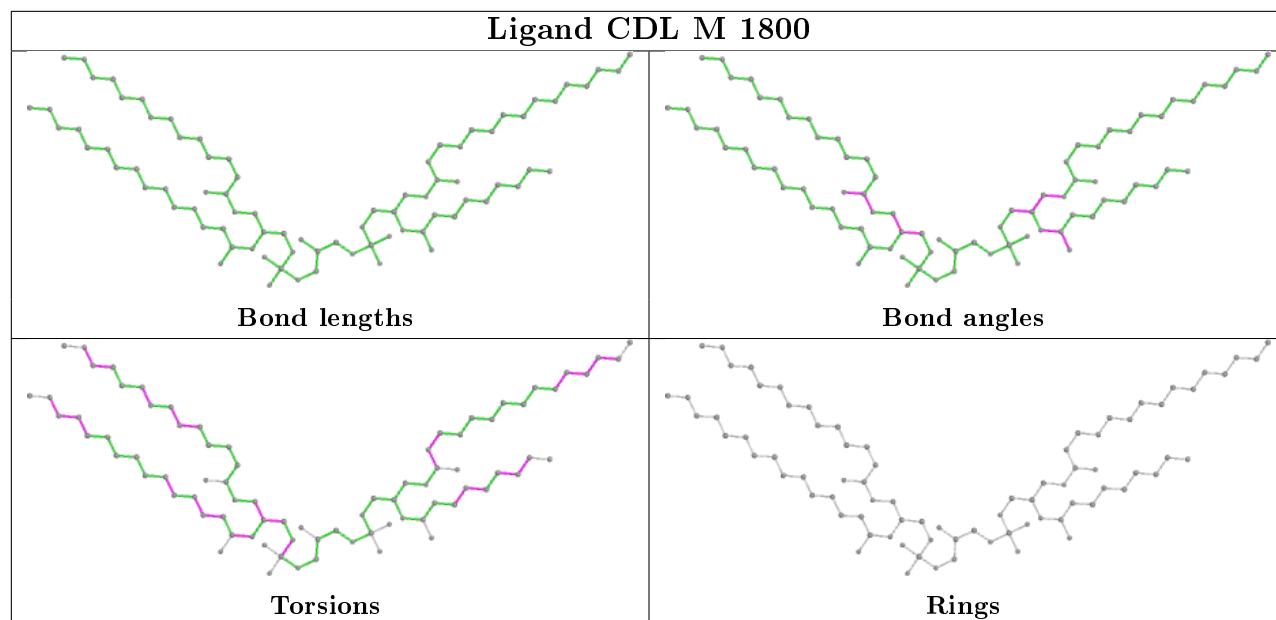


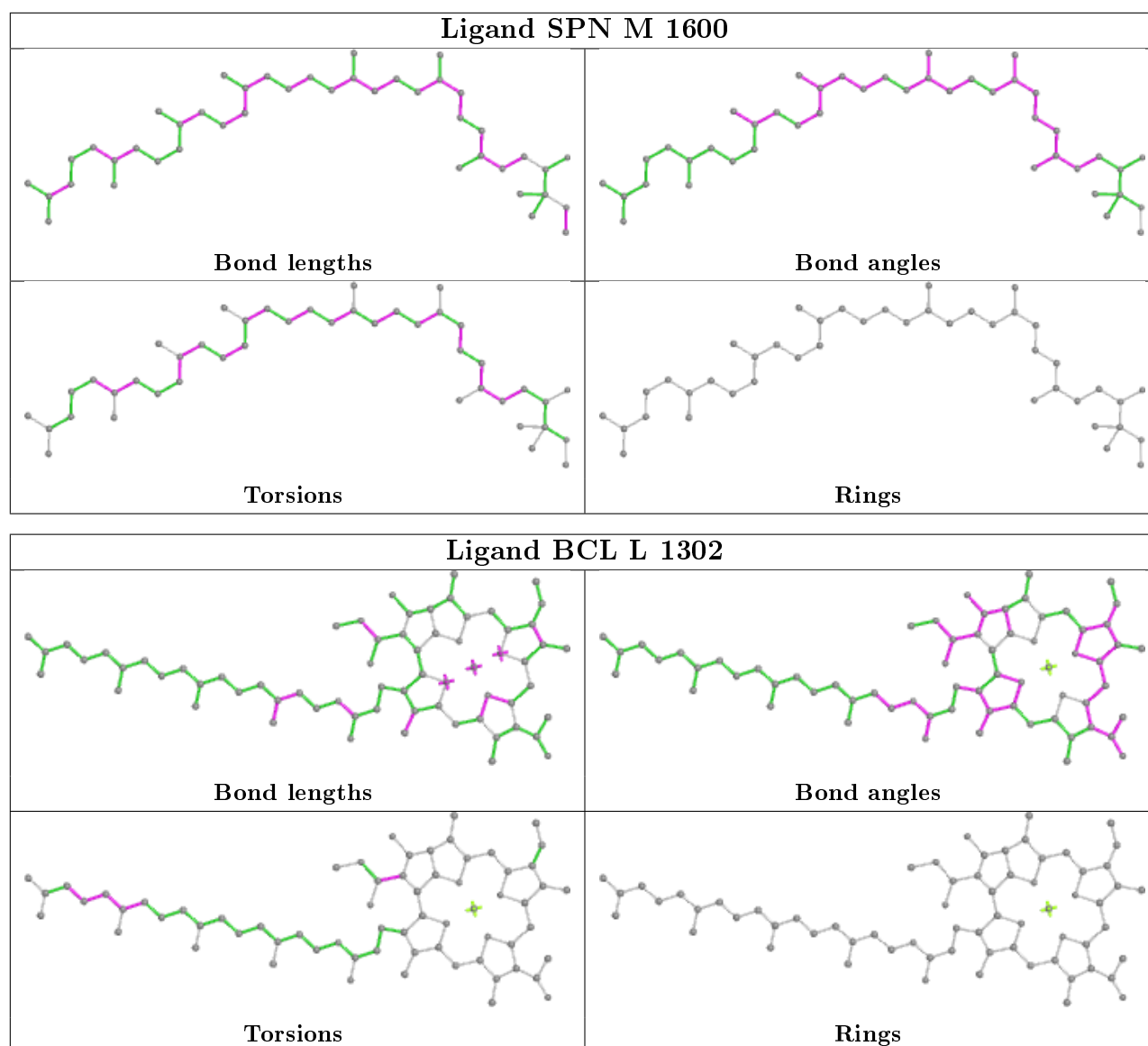
Ligand BPH M 1401



Ligand BCL M 1301







5.7 Other polymers [i](#)

There are no such residues in this entry.

5.8 Polymer linkage issues [i](#)

There are no chain breaks in this entry.

6 Fit of model and data ⓘ

6.1 Protein, DNA and RNA chains ⓘ

EDS was not executed - this section is therefore empty.

6.2 Non-standard residues in protein, DNA, RNA chains ⓘ

EDS was not executed - this section is therefore empty.

6.3 Carbohydrates ⓘ

EDS was not executed - this section is therefore empty.

6.4 Ligands ⓘ

EDS was not executed - this section is therefore empty.

6.5 Other polymers ⓘ

EDS was not executed - this section is therefore empty.