



# Full wwPDB X-ray Structure Validation Report ⓘ

May 16, 2020 – 12:46 pm BST

PDB ID : 4QOC  
Title : crystal structure of compound 16 bound to MDM2(17-111), {(3R,5R,6S)-5-(3-CHLOROPHENYL)-6-(4-CHLOROPHENYL)-1-[(1S)-1-CYCLOPROPYL-2-(PYRROLIDIN-1-YLSULFONYL)ETHYL]-3-METHYL-2-OXOPIPERIDIN-3-YL}ACETIC ACID  
Authors : Huang, X.  
Deposited on : 2014-06-19  
Resolution : 1.70 Å(reported)

This is a Full wwPDB X-ray Structure Validation Report for a publicly released PDB entry.

We welcome your comments at [validation@mail.wwpdb.org](mailto:validation@mail.wwpdb.org)

A user guide is available at

<https://www.wwpdb.org/validation/2017/XrayValidationReportHelp>

with specific help available everywhere you see the ⓘ symbol.

---

The following versions of software and data (see [references ⓘ](#)) were used in the production of this report:

MolProbity	:	4.02b-467
Mogul	:	1.8.5 (274361), CSD as541be (2020)
Xtriage (Phenix)	:	1.13
EDS	:	2.11
buster-report	:	1.1.7 (2018)
Percentile statistics	:	20191225.v01 (using entries in the PDB archive December 25th 2019)
Refmac	:	5.8.0158
CCP4	:	7.0.044 (Gargrove)
Ideal geometry (proteins)	:	Engh & Huber (2001)
Ideal geometry (DNA, RNA)	:	Parkinson et al. (1996)
Validation Pipeline (wwPDB-VP)	:	2.11

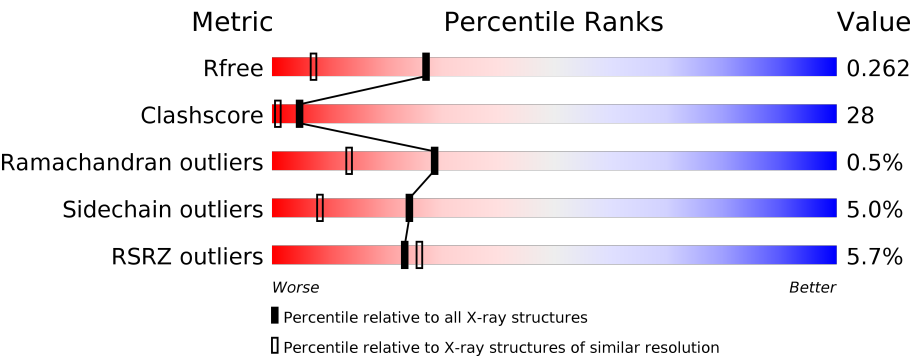
# 1 Overall quality at a glance i

The following experimental techniques were used to determine the structure:

*X-RAY DIFFRACTION*

The reported resolution of this entry is 1.70 Å.

Percentile scores (ranging between 0-100) for global validation metrics of the entry are shown in the following graphic. The table shows the number of entries on which the scores are based.



Metric	Whole archive (#Entries)	Similar resolution (#Entries, resolution range(Å))
$R_{free}$	130704	4298 (1.70-1.70)
Clashscore	141614	4695 (1.70-1.70)
Ramachandran outliers	138981	4610 (1.70-1.70)
Sidechain outliers	138945	4610 (1.70-1.70)
RSRZ outliers	127900	4222 (1.70-1.70)

The table below summarises the geometric issues observed across the polymeric chains and their fit to the electron density. The red, orange, yellow and green segments on the lower bar indicate the fraction of residues that contain outliers for  $\geq 3$ , 2, 1 and 0 types of geometric quality criteria respectively. A grey segment represents the fraction of residues that are not modelled. The numeric value for each fraction is indicated below the corresponding segment, with a dot representing fractions  $\leq 5\%$ . The upper red bar (where present) indicates the fraction of residues that have poor fit to the electron density. The numeric value is given above the bar.

Mol	Chain	Length	Quality of chain
1	A	96	<div><div>2%</div><div><div></div><div>60%</div><div>31%</div><div></div><div></div></div><div></div></div>
1	C	96	<div><div>3%</div><div><div></div><div>64%</div><div>27%</div><div></div><div></div></div><div></div></div>
1	E	96	<div><div>3%</div><div><div></div><div>64%</div><div>33%</div><div></div><div></div></div><div></div></div>
1	G	96	<div><div>14%</div><div><div></div><div>51%</div><div>35%</div><div>8%</div><div></div></div><div></div></div>
1	I	96	<div><div>2%</div><div><div></div><div>64%</div><div>31%</div><div></div><div></div></div><div></div></div>
1	K	96	<div><div>9%</div><div><div></div><div>65%</div><div>27%</div><div>5%</div><div></div></div><div></div></div>

## 2 Entry composition

There are 3 unique types of molecules in this entry. The entry contains 5403 atoms, of which 0 are hydrogens and 0 are deuteriums.

In the tables below, the ZeroOcc column contains the number of atoms modelled with zero occupancy, the AltConf column contains the number of residues with at least one atom in alternate conformation and the Trace column contains the number of residues modelled with at most 2 atoms.

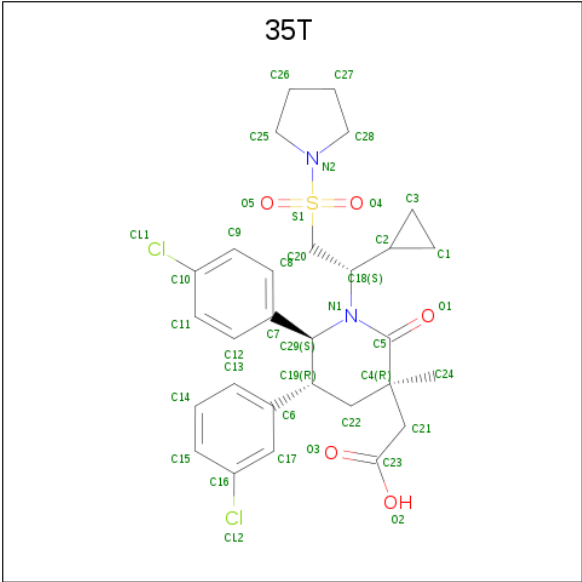
- Molecule 1 is a protein called E3 ubiquitin-protein ligase Mdm2.

Mol	Chain	Residues	Atoms					ZeroOcc	AltConf	Trace
1	A	92	Total	C	N	O	S	0	0	0
			748	489	122	133	4			
1	C	92	Total	C	N	O	S	0	0	0
			752	492	124	132	4			
1	E	94	Total	C	N	O	S	0	0	0
			757	493	123	137	4			
1	G	94	Total	C	N	O	S	0	0	0
			762	496	126	136	4			
1	I	94	Total	C	N	O	S	0	0	0
			767	500	127	136	4			
1	K	95	Total	C	N	O	S	0	0	0
			780	506	129	141	4			

There are 6 discrepancies between the modelled and reference sequences:

Chain	Residue	Modelled	Actual	Comment	Reference
A	16	GLY	-	EXPRESSION TAG	UNP Q00987
C	16	GLY	-	EXPRESSION TAG	UNP Q00987
E	16	GLY	-	EXPRESSION TAG	UNP Q00987
G	16	GLY	-	EXPRESSION TAG	UNP Q00987
I	16	GLY	-	EXPRESSION TAG	UNP Q00987
K	16	GLY	-	EXPRESSION TAG	UNP Q00987

- Molecule 2 is {(3R,5R,6S)-5-(3-chlorophenyl)-6-(4-chlorophenyl)-1-[(1S)-1-cyclopropyl-2-(pyrrolidin-1-ylsulfonyl)ethyl]-3-methyl-2-oxopiperidin-3-yl}acetic acid (three-letter code: 35T) (formula: C<sub>29</sub>H<sub>34</sub>Cl<sub>2</sub>N<sub>2</sub>O<sub>5</sub>S).



Mol	Chain	Residues	Atoms						ZeroOcc	AltConf
2	A	1	Total 39	C 29	Cl 2	N 2	O 5	S 1	0	0
2	C	1	Total 39	C 29	Cl 2	N 2	O 5	S 1	0	0
2	E	1	Total 39	C 29	Cl 2	N 2	O 5	S 1	0	0
2	G	1	Total 39	C 29	Cl 2	N 2	O 5	S 1	0	0
2	I	1	Total 39	C 29	Cl 2	N 2	O 5	S 1	0	0
2	K	1	Total 39	C 29	Cl 2	N 2	O 5	S 1	0	0

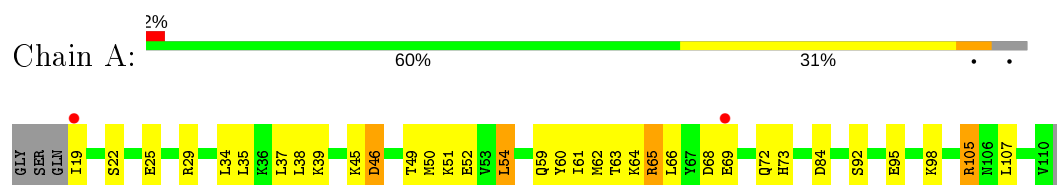
- Molecule 3 is water.

Mol	Chain	Residues	Atoms		ZeroOcc	AltConf
3	A	116	Total	O	0	0
			116	116		
3	C	118	Total	O	0	0
			118	118		
3	E	89	Total	O	0	0
			89	89		
3	G	88	Total	O	0	0
			88	88		
3	I	86	Total	O	0	0
			86	86		
3	K	106	Total	O	0	0
			106	106		

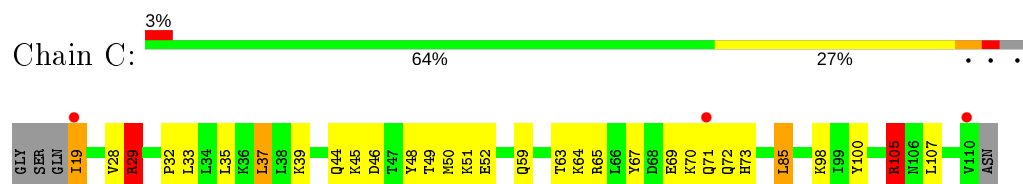
### 3 Residue-property plots [i](#)

These plots are drawn for all protein, RNA and DNA chains in the entry. The first graphic for a chain summarises the proportions of the various outlier classes displayed in the second graphic. The second graphic shows the sequence view annotated by issues in geometry and electron density. Residues are color-coded according to the number of geometric quality criteria for which they contain at least one outlier: green = 0, yellow = 1, orange = 2 and red = 3 or more. A red dot above a residue indicates a poor fit to the electron density ( $\text{RSRZ} > 2$ ). Stretches of 2 or more consecutive residues without any outlier are shown as a green connector. Residues present in the sample, but not in the model, are shown in grey.

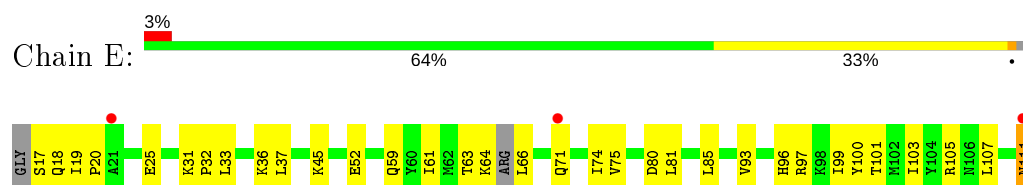
- Molecule 1: E3 ubiquitin-protein ligase Mdm2



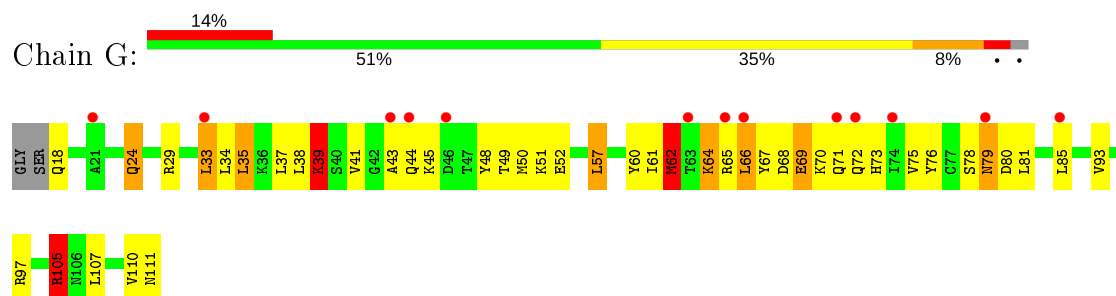
- Molecule 1: E3 ubiquitin-protein ligase Mdm2



- Molecule 1: E3 ubiquitin-protein ligase Mdm2

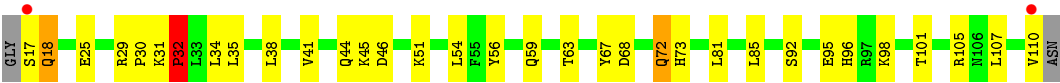


- Molecule 1: E3 ubiquitin-protein ligase Mdm2

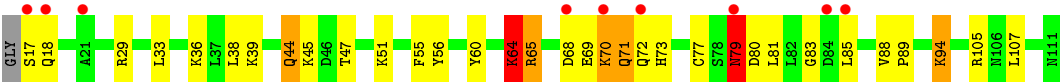


- Molecule 1: E3 ubiquitin-protein ligase Mdm2





● Molecule 1: E3 ubiquitin-protein ligase Mdm2



## 4 Data and refinement statistics

Property	Value	Source
Space group	P 21 21 21	Depositor
Cell constants a, b, c, $\alpha$ , $\beta$ , $\gamma$	56.58Å 98.92Å 103.92Å 90.00° 90.00° 90.00°	Depositor
Resolution (Å)	50.00 – 1.70 49.69 – 1.70	Depositor EDS
% Data completeness (in resolution range)	(Not available) (50.00-1.70) 95.9 (49.69-1.70)	Depositor EDS
$R_{merge}$	0.08	Depositor
$R_{sym}$	(Not available)	Depositor
$\langle I/\sigma(I) \rangle$ <sup>1</sup>	3.03 (at 1.70Å)	Xtriage
Refinement program	CNS	Depositor
R, $R_{free}$	0.238 , 0.253 0.246 , 0.262	Depositor DCC
$R_{free}$ test set	3186 reflections (5.07%)	wwPDB-VP
Wilson B-factor (Å <sup>2</sup> )	19.9	Xtriage
Anisotropy	0.271	Xtriage
Bulk solvent $k_{sol}$ (e/Å <sup>3</sup> ), $B_{sol}$ (Å <sup>2</sup> )	0.34 , 46.4	EDS
L-test for twinning <sup>2</sup>	$\langle  L  \rangle = 0.48$ , $\langle L^2 \rangle = 0.31$	Xtriage
Estimated twinning fraction	0.001 for -h,l,k	Xtriage
$F_o, F_c$ correlation	0.93	EDS
Total number of atoms	5403	wwPDB-VP
Average B, all atoms (Å <sup>2</sup> )	24.0	wwPDB-VP

Xtriage's analysis on translational NCS is as follows: *The analyses of the Patterson function reveals a significant off-origin peak that is 38.22 % of the origin peak, indicating pseudo-translational symmetry. The chance of finding a peak of this or larger height randomly in a structure without pseudo-translational symmetry is equal to 3.8117e-04. The detected translational NCS is most likely also responsible for the elevated intensity ratio.*

<sup>1</sup> Intensities estimated from amplitudes.

<sup>2</sup> Theoretical values of  $\langle |L| \rangle$ ,  $\langle L^2 \rangle$  for acentric reflections are 0.5, 0.333 respectively for untwinned datasets, and 0.375, 0.2 for perfectly twinned datasets.

## 5 Model quality

### 5.1 Standard geometry

Bond lengths and bond angles in the following residue types are not validated in this section: 35T

The Z score for a bond length (or angle) is the number of standard deviations the observed value is removed from the expected value. A bond length (or angle) with  $|Z| > 5$  is considered an outlier worth inspection. RMSZ is the root-mean-square of all Z scores of the bond lengths (or angles).

Mol	Chain	Bond lengths		Bond angles	
		RMSZ	$\# Z  > 5$	RMSZ	$\# Z  > 5$
1	A	0.59	0/763	1.09	4/1031 (0.4%)
1	C	0.60	0/767	1.39	10/1035 (1.0%)
1	E	0.66	0/771	0.90	2/1040 (0.2%)
1	G	0.69	0/777	1.54	14/1049 (1.3%)
1	I	0.51	0/782	0.77	1/1055 (0.1%)
1	K	0.72	2/795 (0.3%)	1.60	9/1071 (0.8%)
All	All	0.63	2/4655 (0.0%)	1.26	40/6281 (0.6%)

Chiral center outliers are detected by calculating the chiral volume of a chiral center and verifying if the center is modelled as a planar moiety or with the opposite hand. A planarity outlier is detected by checking planarity of atoms in a peptide group, atoms in a mainchain group or atoms of a sidechain that are expected to be planar.

Mol	Chain	#Chirality outliers	#Planarity outliers
1	C	0	1
1	G	0	1
1	K	0	1
All	All	0	3

All (2) bond length outliers are listed below:

Mol	Chain	Res	Type	Atoms	Z	Observed(Å)	Ideal(Å)
1	K	79	ASN	CB-CG	-5.33	1.38	1.51
1	K	71	GLN	CA-CB	-5.09	1.42	1.53

All (40) bond angle outliers are listed below:

Mol	Chain	Res	Type	Atoms	Z	Observed(°)	Ideal(°)
1	K	65	ARG	NE-CZ-NH1	-28.05	106.27	120.30
1	K	65	ARG	NE-CZ-NH2	25.35	132.97	120.30

*Continued on next page...*



*Continued from previous page...*

Mol	Chain	Res	Type	Atoms	Z	Observed(°)	Ideal(°)
1	G	105	ARG	NE-CZ-NH1	-24.84	107.88	120.30
1	C	29	ARG	NE-CZ-NH2	-18.12	111.24	120.30
1	C	29	ARG	NE-CZ-NH1	17.34	128.97	120.30
1	G	105	ARG	NE-CZ-NH2	17.02	128.81	120.30
1	A	46	ASP	CB-CG-OD1	13.89	130.80	118.30
1	C	105	ARG	NE-CZ-NH1	13.35	126.97	120.30
1	C	105	ARG	NE-CZ-NH2	-13.33	113.64	120.30
1	K	65	ARG	CD-NE-CZ	-11.78	107.11	123.60
1	A	46	ASP	CB-CG-OD2	-11.76	107.71	118.30
1	G	105	ARG	CD-NE-CZ	-11.28	107.81	123.60
1	G	62	MET	CG-SD-CE	-10.51	83.38	100.20
1	A	105	ARG	NE-CZ-NH2	-9.04	115.78	120.30
1	A	105	ARG	NE-CZ-NH1	7.72	124.16	120.30
1	C	85	LEU	CB-CG-CD1	-7.46	98.31	111.00
1	K	70	LYS	CB-CA-C	7.42	125.23	110.40
1	G	66	LEU	CB-CG-CD2	-7.30	98.59	111.00
1	C	85	LEU	CB-CG-CD2	7.25	123.33	111.00
1	G	33	LEU	CB-CG-CD2	-7.23	98.71	111.00
1	G	81	LEU	CB-CG-CD1	-7.17	98.80	111.00
1	G	39	LYS	CD-CE-NZ	-6.99	95.62	111.70
1	G	66	LEU	CB-CG-CD1	6.88	122.70	111.00
1	G	79	ASN	CB-CA-C	-6.85	96.70	110.40
1	C	37	LEU	CB-CG-CD2	-6.50	99.95	111.00
1	K	65	ARG	CG-CD-NE	6.48	125.41	111.80
1	G	57	LEU	CB-CG-CD1	-6.46	100.02	111.00
1	K	70	LYS	N-CA-CB	-6.23	99.38	110.60
1	C	51	LYS	CB-CG-CD	-6.21	95.47	111.60
1	K	71	GLN	CB-CG-CD	-6.12	95.69	111.60
1	C	37	LEU	CB-CG-CD1	6.05	121.29	111.00
1	K	70	LYS	CB-CG-CD	5.98	127.14	111.60
1	E	25	GLU	CG-CD-OE1	5.84	129.98	118.30
1	I	72	GLN	N-CA-CB	-5.49	100.72	110.60
1	G	24	GLN	CB-CG-CD	5.44	125.75	111.60
1	G	81	LEU	CB-CG-CD2	5.44	120.25	111.00
1	E	25	GLU	CG-CD-OE2	-5.29	107.73	118.30
1	C	29	ARG	CD-NE-CZ	5.11	130.76	123.60
1	G	62	MET	CA-CB-CG	-5.11	104.62	113.30
1	K	64	LYS	CB-CG-CD	5.05	124.74	111.60

There are no chirality outliers.

All (3) planarity outliers are listed below:

Mol	Chain	Res	Type	Group
1	C	29	ARG	Sidechain
1	G	105	ARG	Sidechain
1	K	105	ARG	Sidechain

## 5.2 Too-close contacts

In the following table, the Non-H and H(model) columns list the number of non-hydrogen atoms and hydrogen atoms in the chain respectively. The H(added) column lists the number of hydrogen atoms added and optimized by MolProbity. The Clashes column lists the number of clashes within the asymmetric unit, whereas Symm-Clashes lists symmetry related clashes.

Mol	Chain	Non-H	H(model)	H(added)	Clashes	Symm-Clashes
1	A	748	0	774	35	0
1	C	752	0	787	43	0
1	E	757	0	775	45	1
1	G	762	0	784	77	0
1	I	767	0	800	32	0
1	K	780	0	810	33	0
2	A	39	0	33	1	0
2	C	39	0	33	1	0
2	E	39	0	33	2	0
2	G	39	0	33	3	0
2	I	39	0	33	1	0
2	K	39	0	33	6	0
3	A	116	0	0	10	3
3	C	118	0	0	11	1
3	E	89	0	0	11	6
3	G	88	0	0	29	3
3	I	86	0	0	12	4
3	K	106	0	0	12	2
All	All	5403	0	4928	268	11

The all-atom clashscore is defined as the number of clashes found per 1000 atoms (including hydrogen atoms). The all-atom clashscore for this structure is 28.

All (268) close contacts within the same asymmetric unit are listed below, sorted by their clash magnitude.

Atom-1	Atom-2	Interatomic distance (Å)	Clash overlap (Å)
1:C:48:TYR:HE2	3:C:398:HOH:O	1.08	1.37
1:G:66:LEU:HD12	1:G:76:TYR:O	1.18	1.30
1:G:33:LEU:HD23	1:G:85:LEU:CD2	1.63	1.26

*Continued on next page...*

*Continued from previous page...*

Atom-1	Atom-2	Interatomic distance (Å)	Clash overlap (Å)
1:K:51:LYS:HE3	3:K:361:HOH:O	1.41	1.18
1:G:72:GLN:HG3	3:G:370:HOH:O	1.00	1.17
1:I:25:GLU:OE2	3:I:381:HOH:O	1.63	1.17
1:G:71:GLN:CA	3:G:363:HOH:O	1.93	1.16
1:C:19:ILE:HD12	1:C:100:TYR:CE1	1.80	1.15
1:K:79:ASN:HB2	3:K:360:HOH:O	1.48	1.14
1:A:19:ILE:N	3:A:389:HOH:O	1.78	1.13
1:E:111:ASN:CB	3:E:319:HOH:O	1.96	1.12
1:I:46:ASP:HB3	3:I:319:HOH:O	1.51	1.10
1:I:17:SER:HA	3:I:382:HOH:O	1.53	1.09
1:G:33:LEU:CD2	1:G:85:LEU:HD21	1.84	1.07
1:C:19:ILE:CD1	1:C:100:TYR:CE1	2.37	1.07
1:E:71:GLN:O	3:E:305:HOH:O	1.71	1.07
1:E:111:ASN:HB3	3:E:319:HOH:O	1.50	1.06
1:C:105:ARG:NH1	3:C:393:HOH:O	1.84	1.06
1:C:48:TYR:CE2	3:C:398:HOH:O	1.87	1.06
1:G:33:LEU:HD23	1:G:85:LEU:HD21	1.05	1.01
1:G:71:GLN:CB	3:G:363:HOH:O	2.11	0.98
1:G:66:LEU:CD1	1:G:76:TYR:O	2.11	0.98
1:C:105:ARG:HG2	1:C:105:ARG:HH11	1.28	0.98
1:G:35:LEU:HD13	1:G:44:GLN:HE21	1.26	0.98
1:G:69:GLU:HA	3:G:383:HOH:O	1.64	0.97
1:G:97:ARG:NH1	3:G:333:HOH:O	1.83	0.96
1:G:51:LYS:NZ	3:G:368:HOH:O	1.98	0.95
1:G:79:ASN:OD1	3:G:319:HOH:O	1.85	0.95
1:G:71:GLN:HB3	3:G:363:HOH:O	1.66	0.95
1:G:39:LYS:HG2	3:G:349:HOH:O	1.69	0.93
1:G:33:LEU:HB3	1:G:85:LEU:HD21	1.48	0.93
1:K:36:LYS:NZ	3:K:374:HOH:O	1.97	0.91
1:C:29:ARG:HD3	1:C:46:ASP:O	1.71	0.91
1:G:35:LEU:HD22	1:G:44:GLN:NE2	1.86	0.90
1:E:97:ARG:CZ	3:E:381:HOH:O	2.19	0.90
1:K:18:GLN:NE2	3:K:337:HOH:O	2.04	0.89
1:G:35:LEU:HD13	1:G:44:GLN:NE2	1.88	0.88
1:A:84:ASP:OD1	3:A:372:HOH:O	1.90	0.88
1:E:37:LEU:HD21	1:E:81:LEU:HD23	1.56	0.87
1:I:17:SER:N	3:I:379:HOH:O	2.09	0.85
1:C:19:ILE:HD12	1:C:100:TYR:HE1	1.40	0.84
1:C:59:GLN:O	1:C:63:THR:HG23	1.78	0.83
1:G:60:TYR:O	1:G:64:LYS:HB3	1.78	0.82
1:E:17:SER:N	3:E:383:HOH:O	2.13	0.81

*Continued on next page...*

*Continued from previous page...*

Atom-1	Atom-2	Interatomic distance (Å)	Clash overlap (Å)
1:E:18:GLN:CB	1:E:97:ARG:NH2	2.44	0.80
1:C:105:ARG:NH1	1:C:105:ARG:HG2	1.89	0.80
1:G:71:GLN:C	3:G:363:HOH:O	2.15	0.79
1:G:33:LEU:HD23	1:G:85:LEU:HD23	1.62	0.79
1:E:33:LEU:HD23	1:E:36:LYS:HE2	1.65	0.78
1:C:65:ARG:HH11	1:C:65:ARG:HG2	1.48	0.78
1:G:33:LEU:CB	1:G:85:LEU:HD21	2.14	0.78
1:E:33:LEU:CD2	1:E:36:LYS:CE	2.63	0.77
1:E:64:LYS:HE2	1:E:80:ASP:OD2	1.85	0.77
1:G:67:TYR:HB2	1:G:75:VAL:HG22	1.67	0.76
1:G:35:LEU:HD22	1:G:44:GLN:HE22	1.50	0.76
1:E:97:ARG:NH2	3:E:381:HOH:O	2.17	0.76
1:G:52:GLU:OE2	3:G:365:HOH:O	2.02	0.76
1:K:94:LYS:NZ	2:K:201:35T:O2	2.19	0.75
1:I:92:SER:HB3	1:I:95:GLU:HG3	1.68	0.74
1:A:65:ARG:CG	1:A:65:ARG:HH11	2.01	0.74
1:I:95:GLU:HB2	3:I:347:HOH:O	1.87	0.74
1:I:59:GLN:O	1:I:63:THR:HG23	1.88	0.73
1:G:71:GLN:HA	3:G:363:HOH:O	1.68	0.73
1:K:72:GLN:HG3	3:K:375:HOH:O	1.89	0.73
1:I:51:LYS:HD3	3:I:384:HOH:O	1.89	0.73
1:G:68:ASP:C	1:G:70:LYS:H	1.91	0.72
1:G:69:GLU:CA	3:G:383:HOH:O	2.28	0.72
1:A:65:ARG:NH1	1:A:65:ARG:O	2.21	0.72
1:E:37:LEU:HD23	3:E:384:HOH:O	1.90	0.72
1:G:35:LEU:CD1	1:G:44:GLN:HE21	2.01	0.72
1:E:111:ASN:HB2	3:E:319:HOH:O	1.77	0.72
1:G:18:GLN:N	3:G:373:HOH:O	2.22	0.71
1:C:19:ILE:CD1	1:C:100:TYR:CD1	2.72	0.71
1:E:19:ILE:HD13	1:E:100:TYR:CE2	2.25	0.71
1:A:65:ARG:HG2	1:A:65:ARG:HH11	1.56	0.71
1:K:89:PRO:HB3	3:K:400:HOH:O	1.91	0.69
1:C:19:ILE:HD11	1:C:100:TYR:CE1	2.26	0.69
1:C:19:ILE:CD1	1:C:100:TYR:HE1	1.97	0.69
1:G:78:SER:CB	3:G:354:HOH:O	2.40	0.68
1:G:35:LEU:CD2	1:G:44:GLN:NE2	2.55	0.68
1:E:19:ILE:HD13	1:E:100:TYR:HE2	1.59	0.68
1:I:110:VAL:O	1:I:110:VAL:HG12	1.93	0.68
1:G:33:LEU:HB3	1:G:85:LEU:CD2	2.22	0.68
1:I:46:ASP:CB	3:I:319:HOH:O	2.25	0.67
1:K:94:LYS:NZ	2:K:201:35T:C23	2.58	0.67

*Continued on next page...*

*Continued from previous page...*

Atom-1	Atom-2	Interatomic distance (Å)	Clash overlap (Å)
1:G:39:LYS:HB3	1:G:44:GLN:OE1	1.94	0.67
1:A:68:ASP:OD2	3:A:365:HOH:O	2.12	0.67
2:K:201:35T:H32	2:K:201:35T:O1	1.94	0.67
1:E:33:LEU:HD23	1:E:36:LYS:CE	2.26	0.66
1:E:111:ASN:OXT	1:K:29:ARG:NH1	2.28	0.66
1:K:60:TYR:CE1	1:K:64:LYS:HE2	2.30	0.66
1:E:33:LEU:HD22	1:E:36:LYS:HE3	1.76	0.66
1:G:35:LEU:CD1	1:G:44:GLN:NE2	2.56	0.66
2:C:201:35T:O1	2:C:201:35T:H32	1.95	0.66
1:C:69:GLU:O	3:C:373:HOH:O	2.14	0.65
1:K:94:LYS:HZ1	2:K:201:35T:C23	2.10	0.65
1:A:65:ARG:CB	1:A:65:ARG:HH11	2.09	0.65
1:A:68:ASP:OD1	1:A:69:GLU:N	2.30	0.65
1:C:44:GLN:H	1:G:111:ASN:HD21	1.44	0.65
1:E:33:LEU:CD2	1:E:36:LYS:HE2	2.27	0.64
1:G:65:ARG:NH2	3:G:352:HOH:O	2.22	0.63
1:G:37:LEU:C	1:G:37:LEU:HD23	2.18	0.63
1:G:51:LYS:NZ	3:G:378:HOH:O	2.30	0.63
1:C:19:ILE:HD11	1:C:100:TYR:CD1	2.33	0.63
1:E:37:LEU:CD2	1:E:81:LEU:HD23	2.28	0.63
1:G:79:ASN:CG	3:G:319:HOH:O	2.30	0.62
1:G:39:LYS:CB	1:G:44:GLN:OE1	2.48	0.61
1:E:59:GLN:O	1:E:63:THR:HG23	2.00	0.61
1:A:59:GLN:O	1:A:63:THR:HG23	1.99	0.61
1:C:98:LYS:HG3	2:E:201:35T:H24	1.82	0.60
1:E:18:GLN:CB	1:E:97:ARG:HH21	2.12	0.60
1:A:62:MET:HE1	3:A:378:HOH:O	2.01	0.60
1:K:81:LEU:O	1:K:85:LEU:HD13	2.02	0.60
1:C:69:GLU:CB	3:C:373:HOH:O	2.49	0.59
1:C:105:ARG:NH1	1:C:105:ARG:CG	2.64	0.59
1:E:97:ARG:HB2	1:E:97:ARG:NH1	2.18	0.59
1:C:37:LEU:C	1:C:37:LEU:HD23	2.24	0.58
1:A:45:LYS:HE3	3:A:319:HOH:O	2.02	0.58
1:K:55:PHE:CE1	2:K:201:35T:H26	2.39	0.58
1:A:29:ARG:HD3	1:A:46:ASP:O	2.05	0.57
1:G:33:LEU:CG	1:G:85:LEU:HD21	2.32	0.57
1:G:64:LYS:HD2	1:G:80:ASP:OD2	2.04	0.57
1:E:97:ARG:CB	1:E:97:ARG:NH1	2.68	0.56
1:A:95:GLU:OE1	1:A:98:LYS:HD2	2.05	0.56
1:K:44:GLN:NE2	3:K:370:HOH:O	2.31	0.56
1:K:39:LYS:NZ	3:K:403:HOH:O	2.38	0.56

*Continued on next page...*

*Continued from previous page...*

Atom-1	Atom-2	Interatomic distance (Å)	Clash overlap (Å)
1:K:79:ASN:CB	3:K:360:HOH:O	2.25	0.56
1:A:65:ARG:HB3	1:A:65:ARG:NH1	2.21	0.56
1:G:64:LYS:O	1:G:64:LYS:HG3	2.04	0.56
1:G:68:ASP:O	1:G:70:LYS:N	2.38	0.56
1:A:72:GLN:O	1:A:73:HIS:HB2	2.05	0.56
1:E:33:LEU:HD22	1:E:36:LYS:CE	2.33	0.56
1:C:69:GLU:C	3:C:373:HOH:O	2.43	0.55
1:A:64:LYS:HE2	1:C:64:LYS:HE2	1.89	0.55
1:G:111:ASN:C	3:G:384:HOH:O	2.45	0.55
1:A:65:ARG:HB3	1:A:65:ARG:HH11	1.70	0.55
2:G:201:35T:H32	2:G:201:35T:O1	2.04	0.55
1:G:51:LYS:HE2	3:G:327:HOH:O	2.07	0.55
2:I:201:35T:H32	2:I:201:35T:O1	2.06	0.55
1:K:79:ASN:HA	3:K:360:HOH:O	2.06	0.54
1:A:49:THR:OG1	1:A:52:GLU:HG3	2.07	0.54
1:G:69:GLU:C	3:G:383:HOH:O	2.46	0.54
1:C:65:ARG:HG2	1:C:65:ARG:NH1	2.21	0.54
1:E:111:ASN:N	1:E:111:ASN:HD22	2.05	0.54
1:G:72:GLN:NE2	1:G:73:HIS:ND1	2.55	0.54
1:I:44:GLN:NE2	3:I:301:HOH:O	2.41	0.53
1:E:33:LEU:CD2	1:E:36:LYS:HE3	2.35	0.53
1:G:68:ASP:C	1:G:70:LYS:N	2.58	0.53
1:C:33:LEU:HB3	1:C:85:LEU:HD21	1.91	0.53
1:C:35:LEU:HG	1:C:39:LYS:HD3	1.90	0.53
1:C:105:ARG:NE	3:C:389:HOH:O	1.83	0.53
1:K:81:LEU:HG	1:K:85:LEU:HD13	1.91	0.53
1:K:81:LEU:HG	1:K:85:LEU:CD1	2.39	0.53
1:I:17:SER:CA	3:I:382:HOH:O	2.30	0.52
1:A:107:LEU:C	1:A:107:LEU:HD12	2.29	0.52
2:E:201:35T:H32	2:E:201:35T:O1	2.09	0.52
1:A:51:LYS:NZ	3:A:364:HOH:O	2.27	0.52
1:A:92:SER:HB3	1:A:95:GLU:HG3	1.91	0.52
1:E:105:ARG:NH1	3:E:375:HOH:O	2.42	0.52
1:E:111:ASN:N	1:E:111:ASN:ND2	2.58	0.52
1:C:49:THR:OG1	1:C:52:GLU:HG3	2.09	0.52
1:I:107:LEU:HD12	1:I:107:LEU:C	2.30	0.52
1:C:45:LYS:NZ	1:C:52:GLU:OE2	2.35	0.51
1:K:77:CYS:O	1:K:83:GLY:HA3	2.09	0.51
2:G:201:35T:H3	3:G:387:HOH:O	2.10	0.51
1:G:33:LEU:CD2	1:G:85:LEU:CD2	2.57	0.51
1:E:99:ILE:O	1:E:103:ILE:HG13	2.11	0.51

*Continued on next page...*

*Continued from previous page...*

Atom-1	Atom-2	Interatomic distance (Å)	Clash overlap (Å)
1:I:18:GLN:NE2	3:I:324:HOH:O	2.43	0.51
1:K:45:LYS:NZ	3:K:351:HOH:O	2.44	0.51
1:G:72:GLN:O	3:G:370:HOH:O	2.19	0.50
1:A:45:LYS:CE	3:A:319:HOH:O	2.58	0.50
1:K:17:SER:OG	1:K:18:GLN:N	2.42	0.50
1:I:18:GLN:NE2	1:I:96:HIS:HB2	2.25	0.50
1:C:65:ARG:HD2	3:C:349:HOH:O	2.11	0.50
1:K:79:ASN:OD1	1:K:79:ASN:C	2.48	0.50
1:C:71:GLN:NE2	3:C:344:HOH:O	1.98	0.49
1:C:44:GLN:H	1:G:111:ASN:ND2	2.08	0.49
1:C:63:THR:HG22	3:G:305:HOH:O	2.12	0.49
1:C:71:GLN:CG	3:C:344:HOH:O	2.60	0.49
1:G:64:LYS:CG	1:G:66:LEU:HD23	2.43	0.49
1:C:65:ARG:CG	1:C:65:ARG:HH11	2.21	0.49
1:G:29:ARG:NH2	3:G:332:HOH:O	2.11	0.49
1:I:31:LYS:HB3	1:I:32:PRO:HD2	1.93	0.49
1:C:72:GLN:O	1:C:73:HIS:HB2	2.13	0.49
1:A:50:MET:HE3	1:A:54:LEU:CD2	2.43	0.49
1:E:107:LEU:C	1:E:107:LEU:HD12	2.33	0.49
1:K:72:GLN:O	1:K:73:HIS:HB2	2.13	0.49
1:A:60:TYR:CZ	1:A:64:LYS:HD3	2.48	0.48
1:E:97:ARG:HB2	1:E:97:ARG:CZ	2.43	0.48
1:E:19:ILE:HG22	1:E:20:PRO:O	2.14	0.48
1:A:35:LEU:O	1:A:39:LYS:HG3	2.13	0.48
1:G:57:LEU:O	1:G:61:ILE:HG13	2.14	0.48
1:G:79:ASN:CB	3:G:328:HOH:O	2.61	0.48
1:A:65:ARG:NH1	1:A:65:ARG:HG2	2.25	0.48
1:C:65:ARG:CG	1:C:65:ARG:NH1	2.77	0.47
1:G:49:THR:OG1	1:G:52:GLU:HG3	2.15	0.47
1:C:35:LEU:HG	1:C:39:LYS:CD	2.45	0.47
1:K:68:ASP:O	1:K:71:GLN:HG2	2.15	0.47
1:E:97:ARG:CB	1:E:97:ARG:HH11	2.28	0.47
1:A:37:LEU:HD23	1:A:37:LEU:C	2.35	0.47
1:G:37:LEU:HD23	1:G:37:LEU:O	2.14	0.47
1:G:78:SER:HB3	3:G:354:HOH:O	2.06	0.47
2:A:201:35T:O1	2:A:201:35T:H32	2.14	0.47
1:G:64:LYS:HG3	1:G:66:LEU:HD23	1.97	0.47
1:K:65:ARG:NH1	3:K:368:HOH:O	2.47	0.46
1:G:29:ARG:HG3	1:G:110:VAL:CG2	2.46	0.46
1:A:68:ASP:C	1:A:68:ASP:OD1	2.54	0.46
1:E:61:ILE:HG23	1:E:66:LEU:HB2	1.97	0.46

*Continued on next page...*

*Continued from previous page...*

Atom-1	Atom-2	Interatomic distance (Å)	Clash overlap (Å)
1:G:67:TYR:HE2	1:G:73:HIS:HA	1.80	0.46
1:K:71:GLN:HB3	1:K:71:GLN:HE21	0.98	0.46
1:E:101:THR:O	1:E:105:ARG:HD2	2.15	0.45
1:G:38:LEU:O	1:G:41:VAL:HG22	2.16	0.45
1:I:46:ASP:HB3	3:I:304:HOH:O	2.15	0.45
1:E:111:ASN:H	1:E:111:ASN:HD22	1.63	0.45
1:G:107:LEU:HD12	1:G:107:LEU:C	2.37	0.45
1:A:105:ARG:NH1	3:A:332:HOH:O	2.03	0.45
1:G:105:ARG:HH11	1:G:105:ARG:HD2	0.88	0.45
1:K:94:LYS:HZ2	2:K:201:35T:C23	2.30	0.45
1:E:31:LYS:HB3	1:E:32:PRO:HD2	1.99	0.44
1:I:17:SER:OG	1:I:18:GLN:N	2.44	0.44
1:G:34:LEU:HA	1:G:85:LEU:CD1	2.48	0.44
1:I:46:ASP:CB	3:I:304:HOH:O	2.65	0.44
1:I:72:GLN:O	1:I:73:HIS:HB2	2.18	0.43
1:K:88:VAL:HB	1:K:89:PRO:HD2	1.99	0.43
1:A:51:LYS:CE	3:A:385:HOH:O	2.65	0.43
1:G:67:TYR:CE2	1:G:73:HIS:HA	2.53	0.43
1:E:19:ILE:CD1	1:E:96:HIS:HB3	2.48	0.43
1:I:18:GLN:HG3	1:I:96:HIS:ND1	2.33	0.43
1:K:107:LEU:HD12	1:K:107:LEU:C	2.39	0.43
1:K:38:LEU:HD22	1:K:56:TYR:HB2	2.01	0.43
1:C:50:MET:HB3	1:C:50:MET:HE3	1.85	0.43
1:G:73:HIS:CD2	3:G:385:HOH:O	2.72	0.43
1:I:95:GLU:OE1	1:I:98:LYS:HD2	2.18	0.42
1:E:97:ARG:NE	3:E:381:HOH:O	2.44	0.42
1:E:64:LYS:HB2	1:E:66:LEU:HG	2.01	0.42
1:C:107:LEU:HD12	1:C:107:LEU:C	2.40	0.42
1:C:33:LEU:HD23	1:C:33:LEU:HA	1.80	0.42
1:G:33:LEU:C	1:G:85:LEU:HD11	2.40	0.42
1:A:22:SER:HA	1:A:25:GLU:OE1	2.19	0.42
1:K:29:ARG:NH1	1:K:47:THR:CG2	2.83	0.42
1:G:29:ARG:HG3	1:G:110:VAL:HG21	2.01	0.42
1:A:61:ILE:HG23	1:A:66:LEU:HB2	2.02	0.41
1:G:64:LYS:HE2	1:G:64:LYS:HB2	1.45	0.41
1:A:50:MET:HE2	1:A:50:MET:HB3	1.78	0.41
1:I:30:PRO:HB2	1:I:35:LEU:HD13	2.02	0.41
1:I:38:LEU:HD22	1:I:56:TYR:HB2	2.01	0.41
1:A:51:LYS:HE2	3:A:385:HOH:O	2.20	0.41
1:G:45:LYS:HB2	1:G:48:TYR:CZ	2.55	0.41
1:A:34:LEU:O	1:A:38:LEU:HG	2.20	0.41

*Continued on next page...*



*Continued from previous page...*

Atom-1	Atom-2	Interatomic distance (Å)	Clash overlap (Å)
1:G:93:VAL:O	2:G:201:35T:H8	2.21	0.41
1:I:101:THR:O	1:I:105:ARG:HG3	2.21	0.41
1:I:54:LEU:HA	1:I:54:LEU:HD13	1.93	0.41
1:K:72:GLN:O	1:K:72:GLN:CG	2.69	0.41
1:G:37:LEU:C	1:G:37:LEU:CD2	2.88	0.41
1:C:28:VAL:HB	1:C:107:LEU:HD13	2.03	0.41
1:E:75:VAL:HG23	1:E:93:VAL:CG1	2.51	0.41
1:E:45:LYS:NZ	1:E:52:GLU:OE2	2.41	0.41
1:E:74:ILE:HD11	3:E:379:HOH:O	2.21	0.41
1:I:29:ARG:HG3	1:I:110:VAL:HG22	2.02	0.41
1:G:62:MET:C	1:G:64:LYS:N	2.73	0.40
1:I:67:TYR:O	1:I:68:ASP:HB3	2.22	0.40
1:C:67:TYR:O	3:C:338:HOH:O	2.22	0.40
1:G:43:ALA:HA	3:G:317:HOH:O	2.21	0.40
1:I:110:VAL:O	1:I:110:VAL:CG1	2.62	0.40
1:I:45:LYS:HB2	1:I:45:LYS:HE3	1.89	0.40
1:I:34:LEU:HD13	1:I:85:LEU:HD21	2.04	0.40
1:E:97:ARG:HB3	1:E:97:ARG:HH11	1.86	0.40
1:I:18:GLN:HE21	1:I:96:HIS:HB2	1.85	0.40

All (11) symmetry-related close contacts are listed below. The label for Atom-2 includes the symmetry operator and encoded unit-cell translations to be applied.

Atom-1	Atom-2	Interatomic distance (Å)	Clash overlap (Å)
3:A:348:HOH:O	3:I:301:HOH:O[1_655]	1.70	0.50
3:A:309:HOH:O	3:C:309:HOH:O[1_655]	1.77	0.43
3:E:370:HOH:O	3:I:360:HOH:O[2_454]	1.80	0.40
3:A:342:HOH:O	3:K:381:HOH:O[1_655]	1.85	0.35
3:E:344:HOH:O	3:E:382:HOH:O[4_544]	1.90	0.30
3:E:333:HOH:O	3:E:344:HOH:O[4_444]	1.93	0.27
3:E:385:HOH:O	3:I:372:HOH:O[2_454]	1.98	0.22
1:E:17:SER:O	3:G:353:HOH:O[2_454]	2.11	0.09
3:E:357:HOH:O	3:G:327:HOH:O[2_454]	2.11	0.09
3:E:367:HOH:O	3:G:380:HOH:O[3_544]	2.14	0.06
3:I:336:HOH:O	3:K:352:HOH:O[2_455]	2.19	0.01

## 5.3 Torsion angles

### 5.3.1 Protein backbone

In the following table, the Percentiles column shows the percent Ramachandran outliers of the chain as a percentile score with respect to all X-ray entries followed by that with respect to entries of similar resolution.

The Analysed column shows the number of residues for which the backbone conformation was analysed, and the total number of residues.

Mol	Chain	Analysed	Favoured	Allowed	Outliers	Percentiles	
1	A	90/96 (94%)	87 (97%)	3 (3%)	0	100	100
1	C	90/96 (94%)	85 (94%)	5 (6%)	0	100	100
1	E	90/96 (94%)	88 (98%)	2 (2%)	0	100	100
1	G	92/96 (96%)	84 (91%)	7 (8%)	1 (1%)	14	3
1	I	92/96 (96%)	89 (97%)	2 (2%)	1 (1%)	14	3
1	K	93/96 (97%)	90 (97%)	2 (2%)	1 (1%)	14	3
All	All	547/576 (95%)	523 (96%)	21 (4%)	3 (0%)	29	13

All (3) Ramachandran outliers are listed below:

Mol	Chain	Res	Type
1	G	69	GLU
1	K	69	GLU
1	I	32	PRO

### 5.3.2 Protein sidechains

In the following table, the Percentiles column shows the percent sidechain outliers of the chain as a percentile score with respect to all X-ray entries followed by that with respect to entries of similar resolution.

The Analysed column shows the number of residues for which the sidechain conformation was analysed, and the total number of residues.

Mol	Chain	Analysed	Rotameric	Outliers	Percentiles	
1	A	84/89 (94%)	82 (98%)	2 (2%)	49	31
1	C	85/89 (96%)	81 (95%)	4 (5%)	26	10
1	E	85/89 (96%)	83 (98%)	2 (2%)	49	31
1	G	85/89 (96%)	78 (92%)	7 (8%)	11	2

*Continued on next page...*

*Continued from previous page...*

Mol	Chain	Analysed	Rotameric	Outliers	Percentiles	
1	I	87/89 (98%)	83 (95%)	4 (5%)	27	10
1	K	89/89 (100%)	82 (92%)	7 (8%)	12	2
All	All	515/534 (96%)	489 (95%)	26 (5%)	24	8

All (26) residues with a non-rotameric sidechain are listed below:

Mol	Chain	Res	Type
1	A	54	LEU
1	A	65	ARG
1	C	19	ILE
1	C	32	PRO
1	C	70	LYS
1	C	105	ARG
1	E	85	LEU
1	E	111	ASN
1	G	24	GLN
1	G	35	LEU
1	G	39	LYS
1	G	50	MET
1	G	62	MET
1	G	64	LYS
1	G	105	ARG
1	I	18	GLN
1	I	32	PRO
1	I	41	VAL
1	I	81	LEU
1	K	33	LEU
1	K	44	GLN
1	K	64	LYS
1	K	70	LYS
1	K	79	ASN
1	K	80	ASP
1	K	94	LYS

Some sidechains can be flipped to improve hydrogen bonding and reduce clashes. All (16) such sidechains are listed below:

Mol	Chain	Res	Type
1	A	59	GLN
1	A	72	GLN
1	A	106	ASN

*Continued on next page...*

*Continued from previous page...*

Mol	Chain	Res	Type
1	C	44	GLN
1	E	44	GLN
1	E	72	GLN
1	E	106	ASN
1	E	111	ASN
1	G	106	ASN
1	G	111	ASN
1	I	18	GLN
1	I	44	GLN
1	I	106	ASN
1	K	18	GLN
1	K	71	GLN
1	K	72	GLN

### 5.3.3 RNA [i](#)

There are no RNA molecules in this entry.

## 5.4 Non-standard residues in protein, DNA, RNA chains [i](#)

There are no non-standard protein/DNA/RNA residues in this entry.

## 5.5 Carbohydrates [i](#)

There are no carbohydrates in this entry.

## 5.6 Ligand geometry [i](#)

6 ligands are modelled in this entry.

In the following table, the Counts columns list the number of bonds (or angles) for which Mogul statistics could be retrieved, the number of bonds (or angles) that are observed in the model and the number of bonds (or angles) that are defined in the Chemical Component Dictionary. The Link column lists molecule types, if any, to which the group is linked. The Z score for a bond length (or angle) is the number of standard deviations the observed value is removed from the expected value. A bond length (or angle) with  $|Z| > 2$  is considered an outlier worth inspection. RMSZ is the root-mean-square of all Z scores of the bond lengths (or angles).

Mol	Type	Chain	Res	Link	Bond lengths			Bond angles		
					Counts	RMSZ	$\# Z  > 2$	Counts	RMSZ	$\# Z  > 2$
2	35T	K	201	-	39,43,43	3.04	24 (61%)	48,65,65	3.83	21 (43%)

Mol	Type	Chain	Res	Link	Bond lengths			Bond angles		
					Counts	RMSZ	# Z  > 2	Counts	RMSZ	# Z  > 2
2	35T	A	201	-	39,43,43	2.87	18 (46%)	48,65,65	3.39	22 (45%)
2	35T	C	201	-	39,43,43	3.18	21 (53%)	48,65,65	3.43	25 (52%)
2	35T	E	201	-	39,43,43	3.04	20 (51%)	48,65,65	3.17	19 (39%)
2	35T	G	201	-	39,43,43	3.63	21 (53%)	48,65,65	3.66	28 (58%)
2	35T	I	201	-	39,43,43	3.01	18 (46%)	48,65,65	3.42	22 (45%)

In the following table, the Chirals column lists the number of chiral outliers, the number of chiral centers analysed, the number of these observed in the model and the number defined in the Chemical Component Dictionary. Similar counts are reported in the Torsion and Rings columns. '-' means no outliers of that kind were identified.

Mol	Type	Chain	Res	Link	Chirals	Torsions	Rings
2	35T	K	201	-	-	5/30/64/64	0/5/5/5
2	35T	A	201	-	-	7/30/64/64	0/5/5/5
2	35T	C	201	-	-	5/30/64/64	0/5/5/5
2	35T	E	201	-	-	4/30/64/64	0/5/5/5
2	35T	G	201	-	-	5/30/64/64	0/5/5/5
2	35T	I	201	-	-	3/30/64/64	0/5/5/5

All (122) bond length outliers are listed below:

Mol	Chain	Res	Type	Atoms	Z	Observed(Å)	Ideal(Å)
2	G	201	35T	S1-N2	14.02	1.82	1.63
2	C	201	35T	S1-N2	11.20	1.78	1.63
2	E	201	35T	S1-N2	10.07	1.76	1.63
2	A	201	35T	S1-N2	9.25	1.75	1.63
2	I	201	35T	S1-N2	8.79	1.74	1.63
2	K	201	35T	S1-N2	8.52	1.74	1.63
2	E	201	35T	C3-C1	-7.73	1.19	1.48
2	K	201	35T	C3-C1	-7.69	1.19	1.48
2	C	201	35T	C3-C1	-7.64	1.19	1.48
2	G	201	35T	C3-C1	-7.63	1.20	1.48
2	A	201	35T	C3-C1	-7.60	1.20	1.48
2	I	201	35T	C3-C1	-7.55	1.20	1.48
2	G	201	35T	C5-N1	6.02	1.41	1.35
2	I	201	35T	C13-C6	4.99	1.47	1.39
2	I	201	35T	C5-N1	4.79	1.40	1.35
2	C	201	35T	C8-C7	4.65	1.46	1.39
2	K	201	35T	C13-C6	4.51	1.46	1.39
2	G	201	35T	C13-C6	4.49	1.46	1.39

*Continued on next page...*

*Continued from previous page...*

Mol	Chain	Res	Type	Atoms	Z	Observed(Å)	Ideal(Å)
2	A	201	35T	C13-C6	4.33	1.46	1.39
2	I	201	35T	C17-C16	4.21	1.45	1.38
2	E	201	35T	C8-C7	4.20	1.45	1.39
2	G	201	35T	C15-C16	4.19	1.46	1.38
2	G	201	35T	C12-C7	4.17	1.45	1.39
2	K	201	35T	C29-N1	4.07	1.53	1.48
2	G	201	35T	C29-N1	4.07	1.53	1.48
2	C	201	35T	C5-N1	3.96	1.39	1.35
2	E	201	35T	C13-C6	3.95	1.45	1.39
2	K	201	35T	C12-C7	3.94	1.45	1.39
2	E	201	35T	C9-C10	3.90	1.45	1.38
2	G	201	35T	C17-C6	3.81	1.45	1.39
2	G	201	35T	C17-C16	3.80	1.44	1.38
2	I	201	35T	C8-C7	3.79	1.45	1.39
2	A	201	35T	C17-C6	3.76	1.45	1.39
2	C	201	35T	C17-C6	3.74	1.45	1.39
2	G	201	35T	C11-C10	3.73	1.45	1.38
2	I	201	35T	C12-C7	3.68	1.45	1.39
2	I	201	35T	C4-C5	3.67	1.58	1.52
2	K	201	35T	C17-C6	3.67	1.44	1.39
2	C	201	35T	C17-C16	3.63	1.44	1.38
2	I	201	35T	C9-C10	3.62	1.44	1.38
2	E	201	35T	C17-C6	3.56	1.44	1.39
2	K	201	35T	C12-C11	3.55	1.45	1.38
2	C	201	35T	C12-C7	3.54	1.44	1.39
2	C	201	35T	C14-C13	3.54	1.46	1.38
2	A	201	35T	C14-C13	3.51	1.46	1.38
2	C	201	35T	C16-CL2	-3.51	1.66	1.74
2	A	201	35T	C5-N1	3.50	1.38	1.35
2	E	201	35T	C5-N1	3.50	1.38	1.35
2	I	201	35T	C7-C29	-3.48	1.46	1.51
2	E	201	35T	C12-C7	3.48	1.44	1.39
2	G	201	35T	C12-C11	3.47	1.45	1.38
2	I	201	35T	C14-C13	3.45	1.46	1.38
2	A	201	35T	C17-C16	3.45	1.44	1.38
2	G	201	35T	C8-C7	3.40	1.44	1.39
2	K	201	35T	C9-C10	3.40	1.44	1.38
2	C	201	35T	C11-C10	3.39	1.44	1.38
2	E	201	35T	C17-C16	3.38	1.43	1.38
2	C	201	35T	C13-C6	3.37	1.44	1.39
2	E	201	35T	C14-C13	3.35	1.46	1.38
2	K	201	35T	C5-N1	3.34	1.38	1.35

*Continued on next page...*

*Continued from previous page...*

Mol	Chain	Res	Type	Atoms	Z	Observed(Å)	Ideal(Å)
2	A	201	35T	C8-C7	3.34	1.44	1.39
2	K	201	35T	C17-C16	3.33	1.43	1.38
2	K	201	35T	C14-C15	3.32	1.45	1.38
2	G	201	35T	C14-C15	3.32	1.45	1.38
2	A	201	35T	C12-C7	3.31	1.44	1.39
2	K	201	35T	C11-C10	3.26	1.44	1.38
2	E	201	35T	C11-C10	3.24	1.44	1.38
2	C	201	35T	C15-C16	3.21	1.44	1.38
2	K	201	35T	C8-C7	3.20	1.44	1.39
2	A	201	35T	C7-C29	-3.17	1.47	1.51
2	A	201	35T	C9-C10	3.16	1.44	1.38
2	K	201	35T	C16-CL2	-3.13	1.67	1.74
2	E	201	35T	C15-C16	3.12	1.43	1.38
2	I	201	35T	C11-C10	3.12	1.43	1.38
2	A	201	35T	C15-C16	3.09	1.43	1.38
2	C	201	35T	C7-C29	-3.06	1.47	1.51
2	I	201	35T	C17-C6	3.02	1.43	1.39
2	C	201	35T	C12-C11	2.97	1.44	1.38
2	E	201	35T	C9-C8	2.96	1.44	1.38
2	E	201	35T	C1-C2	2.96	1.59	1.49
2	G	201	35T	C1-C2	2.95	1.59	1.49
2	K	201	35T	C14-C13	2.94	1.45	1.38
2	C	201	35T	C3-C2	2.93	1.59	1.49
2	K	201	35T	C3-C2	2.90	1.59	1.49
2	A	201	35T	C1-C2	2.88	1.58	1.49
2	K	201	35T	C1-C2	2.87	1.58	1.49
2	A	201	35T	C11-C10	2.87	1.43	1.38
2	C	201	35T	C1-C2	2.86	1.58	1.49
2	G	201	35T	C3-C2	2.86	1.58	1.49
2	G	201	35T	C9-C10	2.85	1.43	1.38
2	I	201	35T	C1-C2	2.84	1.58	1.49
2	I	201	35T	C3-C2	2.84	1.58	1.49
2	A	201	35T	C3-C2	2.81	1.58	1.49
2	E	201	35T	C3-C2	2.79	1.58	1.49
2	K	201	35T	C15-C16	2.76	1.43	1.38
2	I	201	35T	C14-C15	2.74	1.44	1.38
2	G	201	35T	C14-C13	2.72	1.44	1.38
2	E	201	35T	C12-C11	2.71	1.43	1.38
2	G	201	35T	O4-S1	2.65	1.46	1.43
2	E	201	35T	C4-C5	2.65	1.57	1.52
2	E	201	35T	C7-C29	-2.62	1.48	1.51
2	C	201	35T	C14-C15	2.61	1.44	1.38

*Continued on next page...*

*Continued from previous page...*

Mol	Chain	Res	Type	Atoms	Z	Observed(Å)	Ideal(Å)
2	I	201	35T	C15-C16	2.58	1.42	1.38
2	G	201	35T	C20-S1	-2.58	1.69	1.78
2	E	201	35T	C16-CL2	-2.57	1.68	1.74
2	A	201	35T	C14-C15	2.56	1.44	1.38
2	I	201	35T	C12-C11	2.56	1.43	1.38
2	G	201	35T	C7-C29	-2.55	1.48	1.51
2	C	201	35T	C9-C10	2.51	1.42	1.38
2	G	201	35T	C9-C8	2.49	1.43	1.38
2	A	201	35T	C10-CL1	-2.42	1.69	1.74
2	K	201	35T	O4-S1	2.23	1.45	1.43
2	K	201	35T	C7-C29	-2.19	1.48	1.51
2	K	201	35T	C28-N2	2.17	1.52	1.48
2	K	201	35T	C10-CL1	-2.17	1.69	1.74
2	C	201	35T	C25-N2	2.12	1.52	1.48
2	A	201	35T	C9-C8	2.11	1.42	1.38
2	C	201	35T	C24-C4	2.09	1.58	1.53
2	C	201	35T	C4-C5	2.07	1.56	1.52
2	K	201	35T	C9-C8	2.06	1.42	1.38
2	E	201	35T	C14-C15	2.02	1.43	1.38
2	K	201	35T	C27-C28	2.01	1.58	1.51

All (137) bond angle outliers are listed below:

Mol	Chain	Res	Type	Atoms	Z	Observed(°)	Ideal(°)
2	K	201	35T	O4-S1-N2	-14.61	94.85	107.23
2	E	201	35T	C3-C2-C1	-13.17	44.15	60.03
2	K	201	35T	C3-C2-C1	-13.12	44.21	60.03
2	C	201	35T	C3-C2-C1	-13.08	44.26	60.03
2	G	201	35T	C3-C2-C1	-13.07	44.27	60.03
2	A	201	35T	C3-C2-C1	-12.99	44.37	60.03
2	I	201	35T	C3-C2-C1	-12.92	44.45	60.03
2	I	201	35T	O5-S1-N2	-9.00	99.60	107.23
2	G	201	35T	O5-S1-N2	-7.72	100.69	107.23
2	C	201	35T	O5-S1-N2	-7.21	101.12	107.23
2	G	201	35T	O4-S1-C20	6.80	119.21	107.96
2	I	201	35T	C12-C7-C8	6.35	126.22	118.29
2	E	201	35T	O4-S1-N2	-6.27	101.92	107.23
2	A	201	35T	C12-C7-C8	6.24	126.08	118.29
2	G	201	35T	O1-C5-C4	-5.87	116.60	123.32
2	E	201	35T	C12-C7-C8	5.51	125.17	118.29
2	C	201	35T	C12-C7-C8	5.46	125.10	118.29
2	G	201	35T	C12-C7-C8	5.34	124.96	118.29

*Continued on next page...*



*Continued from previous page...*

Mol	Chain	Res	Type	Atoms	Z	Observed(°)	Ideal(°)
2	E	201	35T	C1-C3-C2	5.23	68.17	59.98
2	A	201	35T	O1-C5-C4	-5.22	117.34	123.32
2	G	201	35T	C1-C3-C2	5.12	67.99	59.98
2	C	201	35T	C3-C1-C2	5.10	67.97	59.98
2	K	201	35T	C3-C1-C2	5.08	67.93	59.98
2	A	201	35T	C1-C3-C2	5.06	67.90	59.98
2	A	201	35T	C24-C4-C5	-5.06	102.41	108.20
2	G	201	35T	C9-C10-CL1	-5.05	111.45	119.35
2	K	201	35T	C1-C3-C2	5.03	67.86	59.98
2	I	201	35T	C1-C3-C2	4.98	67.78	59.98
2	C	201	35T	C1-C3-C2	4.98	67.77	59.98
2	I	201	35T	C3-C1-C2	4.98	67.77	59.98
2	G	201	35T	C3-C1-C2	4.96	67.74	59.98
2	A	201	35T	C3-C1-C2	4.95	67.73	59.98
2	E	201	35T	C3-C1-C2	4.92	67.68	59.98
2	K	201	35T	C20-S1-N2	4.91	112.49	106.10
2	A	201	35T	C11-C10-C9	4.90	127.60	121.24
2	K	201	35T	C7-C29-N1	4.85	117.52	112.69
2	A	201	35T	C1-C2-C18	-4.77	109.08	119.32
2	A	201	35T	C11-C12-C7	-4.75	116.42	121.20
2	G	201	35T	C1-C2-C18	-4.69	109.24	119.32
2	C	201	35T	O1-C5-C4	-4.65	118.00	123.32
2	I	201	35T	C11-C12-C7	-4.60	116.57	121.20
2	K	201	35T	C1-C2-C18	-4.59	109.46	119.32
2	I	201	35T	C1-C2-C18	-4.54	109.57	119.32
2	C	201	35T	C11-C10-C9	4.53	127.11	121.24
2	C	201	35T	C24-C4-C5	-4.49	103.06	108.20
2	C	201	35T	C1-C2-C18	-4.40	109.86	119.32
2	E	201	35T	C1-C2-C18	-4.39	109.89	119.32
2	K	201	35T	C24-C4-C5	-4.38	103.17	108.20
2	C	201	35T	C11-C12-C7	-4.37	116.80	121.20
2	I	201	35T	C9-C8-C7	-4.34	116.83	121.20
2	K	201	35T	C12-C7-C8	4.30	123.65	118.29
2	I	201	35T	O1-C5-C4	-4.27	118.43	123.32
2	C	201	35T	O5-S1-O4	4.26	123.35	118.98
2	E	201	35T	C11-C12-C7	-4.24	116.93	121.20
2	K	201	35T	O5-S1-O4	4.21	123.30	118.98
2	G	201	35T	C7-C29-N1	4.16	116.83	112.69
2	G	201	35T	C11-C12-C7	-4.10	117.07	121.20
2	I	201	35T	C3-C2-C18	-4.10	110.52	119.32
2	K	201	35T	C11-C10-C9	4.08	126.53	121.24
2	I	201	35T	C7-C29-N1	4.06	116.73	112.69

*Continued on next page...*

*Continued from previous page...*

Mol	Chain	Res	Type	Atoms	Z	Observed(°)	Ideal(°)
2	G	201	35T	C21-C4-C5	-4.05	102.01	108.13
2	A	201	35T	C3-C2-C18	-4.05	110.62	119.32
2	E	201	35T	C3-C2-C18	-4.02	110.69	119.32
2	A	201	35T	C22-C4-C5	4.02	113.52	108.98
2	I	201	35T	C11-C10-C9	4.01	126.44	121.24
2	K	201	35T	O1-C5-C4	-4.01	118.73	123.32
2	G	201	35T	C27-C28-N2	3.98	109.28	103.43
2	K	201	35T	C12-C11-C10	-3.96	115.07	119.24
2	E	201	35T	O1-C5-C4	-3.95	118.80	123.32
2	A	201	35T	O4-S1-C20	3.91	114.42	107.96
2	C	201	35T	C3-C2-C18	-3.89	110.97	119.32
2	G	201	35T	C3-C2-C18	-3.89	110.97	119.32
2	E	201	35T	C9-C8-C7	-3.84	117.33	121.20
2	K	201	35T	C3-C2-C18	-3.81	111.15	119.32
2	C	201	35T	C9-C10-CL1	-3.77	113.47	119.35
2	A	201	35T	C7-C29-N1	3.70	116.37	112.69
2	A	201	35T	C8-C9-C10	-3.68	115.36	119.24
2	G	201	35T	C9-C8-C7	-3.65	117.53	121.20
2	E	201	35T	C22-C4-C5	3.63	113.08	108.98
2	C	201	35T	C9-C8-C7	-3.63	117.55	121.20
2	C	201	35T	C20-S1-N2	3.57	110.75	106.10
2	G	201	35T	O5-S1-O4	-3.53	115.36	118.98
2	A	201	35T	C9-C8-C7	-3.48	117.69	121.20
2	G	201	35T	C15-C16-CL2	3.35	124.59	119.35
2	G	201	35T	C26-C25-N2	3.29	108.26	103.43
2	G	201	35T	C13-C14-C15	-3.27	115.60	120.25
2	C	201	35T	C26-C25-N2	3.27	108.23	103.43
2	K	201	35T	C9-C10-CL1	-3.26	114.26	119.35
2	A	201	35T	C13-C14-C15	-3.25	115.63	120.25
2	K	201	35T	C13-C14-C15	-3.24	115.65	120.25
2	A	201	35T	O5-S1-N2	-3.23	104.49	107.23
2	G	201	35T	C11-C10-C9	3.20	125.39	121.24
2	I	201	35T	O4-S1-N2	3.12	109.87	107.23
2	E	201	35T	C12-C7-C29	-3.10	114.77	120.74
2	I	201	35T	C12-C7-C29	-3.03	114.90	120.74
2	C	201	35T	C7-C29-N1	3.02	115.70	112.69
2	K	201	35T	C9-C8-C7	-2.99	118.18	121.20
2	A	201	35T	C12-C7-C29	-2.97	115.01	120.74
2	I	201	35T	C13-C14-C15	-2.96	116.05	120.25
2	E	201	35T	C19-C29-N1	2.92	112.99	109.04
2	G	201	35T	C24-C4-C5	2.90	111.53	108.20
2	E	201	35T	O5-S1-N2	-2.87	104.79	107.23

*Continued on next page...*

*Continued from previous page...*

Mol	Chain	Res	Type	Atoms	Z	Observed(°)	Ideal(°)
2	I	201	35T	C24-C4-C21	-2.82	105.55	109.74
2	I	201	35T	C11-C10-CL1	-2.69	115.14	119.35
2	K	201	35T	O4-S1-C20	2.66	112.36	107.96
2	G	201	35T	O4-S1-N2	-2.65	104.98	107.23
2	E	201	35T	C11-C10-C9	2.64	124.66	121.24
2	E	201	35T	C13-C14-C15	-2.63	116.52	120.25
2	K	201	35T	C14-C13-C6	2.63	123.89	120.65
2	A	201	35T	O4-S1-N2	-2.61	105.01	107.23
2	A	201	35T	C26-C25-N2	2.54	107.17	103.43
2	I	201	35T	C26-C25-N2	2.53	107.16	103.43
2	G	201	35T	C11-C10-CL1	2.43	123.16	119.35
2	C	201	35T	C12-C11-C10	-2.41	116.70	119.24
2	E	201	35T	C14-C13-C6	2.39	123.60	120.65
2	C	201	35T	C8-C9-C10	-2.38	116.73	119.24
2	C	201	35T	C17-C16-CL2	-2.37	116.19	119.15
2	C	201	35T	C21-C4-C5	-2.36	104.57	108.13
2	G	201	35T	C14-C13-C6	2.34	123.54	120.65
2	C	201	35T	C12-C7-C29	-2.33	116.25	120.74
2	C	201	35T	O4-S1-C20	-2.32	104.12	107.96
2	C	201	35T	C13-C14-C15	-2.29	117.00	120.25
2	A	201	35T	C12-C11-C10	-2.26	116.86	119.24
2	A	201	35T	C11-C10-CL1	-2.23	115.87	119.35
2	E	201	35T	C7-C29-N1	2.20	114.88	112.69
2	I	201	35T	C8-C9-C10	-2.18	116.95	119.24
2	C	201	35T	C27-C28-N2	2.16	106.61	103.43
2	I	201	35T	C12-C11-C10	-2.14	116.98	119.24
2	G	201	35T	C12-C11-C10	-2.08	117.05	119.24
2	I	201	35T	C14-C13-C6	2.07	123.21	120.65
2	G	201	35T	C12-C7-C29	-2.07	116.75	120.74
2	G	201	35T	C15-C16-C17	-2.06	118.80	121.53
2	G	201	35T	C17-C16-CL2	-2.05	116.58	119.15
2	K	201	35T	C11-C12-C7	-2.04	119.14	121.20
2	I	201	35T	C27-C28-N2	2.03	106.42	103.43
2	E	201	35T	C21-C4-C5	-2.00	105.11	108.13
2	K	201	35T	C15-C16-CL2	-2.00	116.22	119.35

There are no chirality outliers.

All (29) torsion outliers are listed below:

Mol	Chain	Res	Type	Atoms
2	K	201	35T	N1-C18-C2-C3
2	K	201	35T	C20-C18-C2-C3

*Continued on next page...*

*Continued from previous page...*

Mol	Chain	Res	Type	Atoms
2	A	201	35T	N1-C18-C2-C1
2	A	201	35T	C20-C18-C2-C1
2	A	201	35T	C20-C18-C2-C3
2	A	201	35T	C28-N2-S1-O4
2	C	201	35T	N1-C18-C2-C3
2	C	201	35T	C20-C18-C2-C3
2	C	201	35T	C28-N2-S1-O4
2	E	201	35T	N1-C18-C2-C3
2	E	201	35T	C20-C18-C2-C3
2	G	201	35T	N1-C18-C2-C3
2	G	201	35T	C20-C18-C2-C3
2	G	201	35T	C28-N2-S1-O4
2	I	201	35T	N1-C18-C2-C3
2	I	201	35T	C20-C18-C2-C3
2	K	201	35T	C18-C20-S1-O5
2	A	201	35T	C28-N2-S1-C20
2	C	201	35T	C28-N2-S1-C20
2	E	201	35T	C25-N2-S1-O5
2	K	201	35T	C2-C18-N1-C29
2	K	201	35T	C2-C18-C20-S1
2	A	201	35T	C2-C18-N1-C29
2	A	201	35T	N1-C18-C2-C3
2	C	201	35T	C2-C18-N1-C29
2	E	201	35T	C2-C18-N1-C29
2	G	201	35T	C2-C18-N1-C29
2	I	201	35T	C2-C18-N1-C29
2	G	201	35T	C23-C21-C4-C24

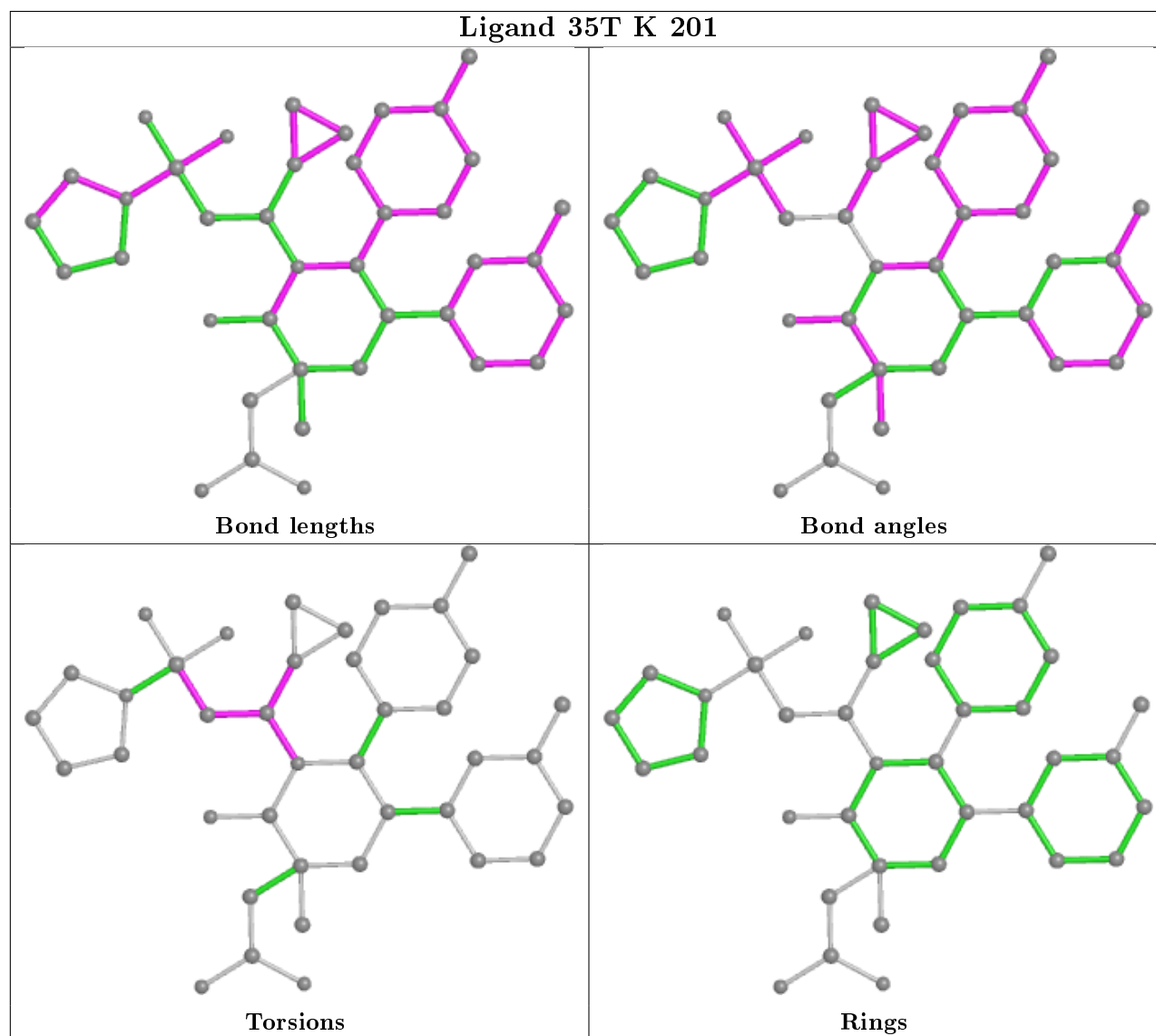
There are no ring outliers.

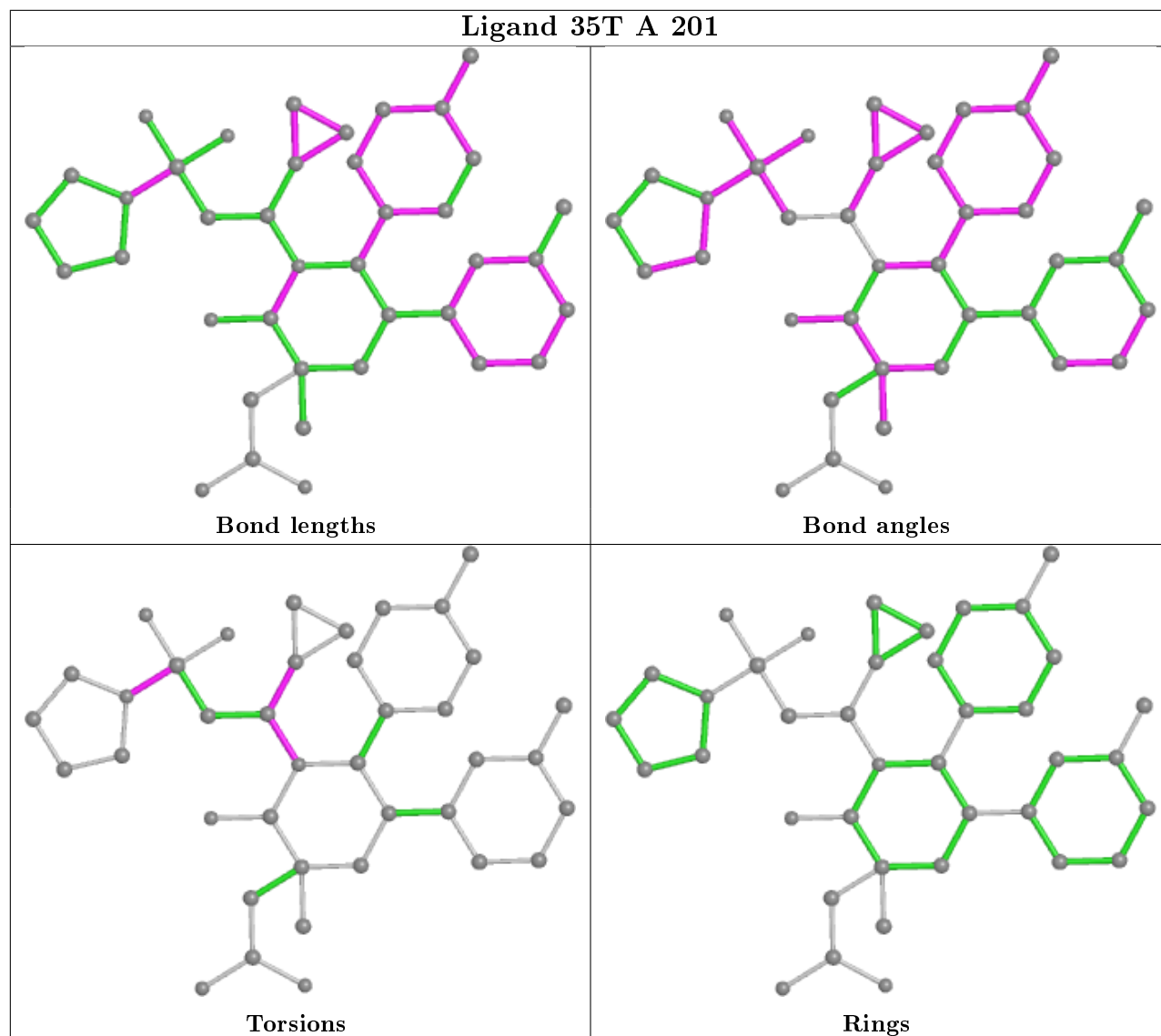
6 monomers are involved in 14 short contacts:

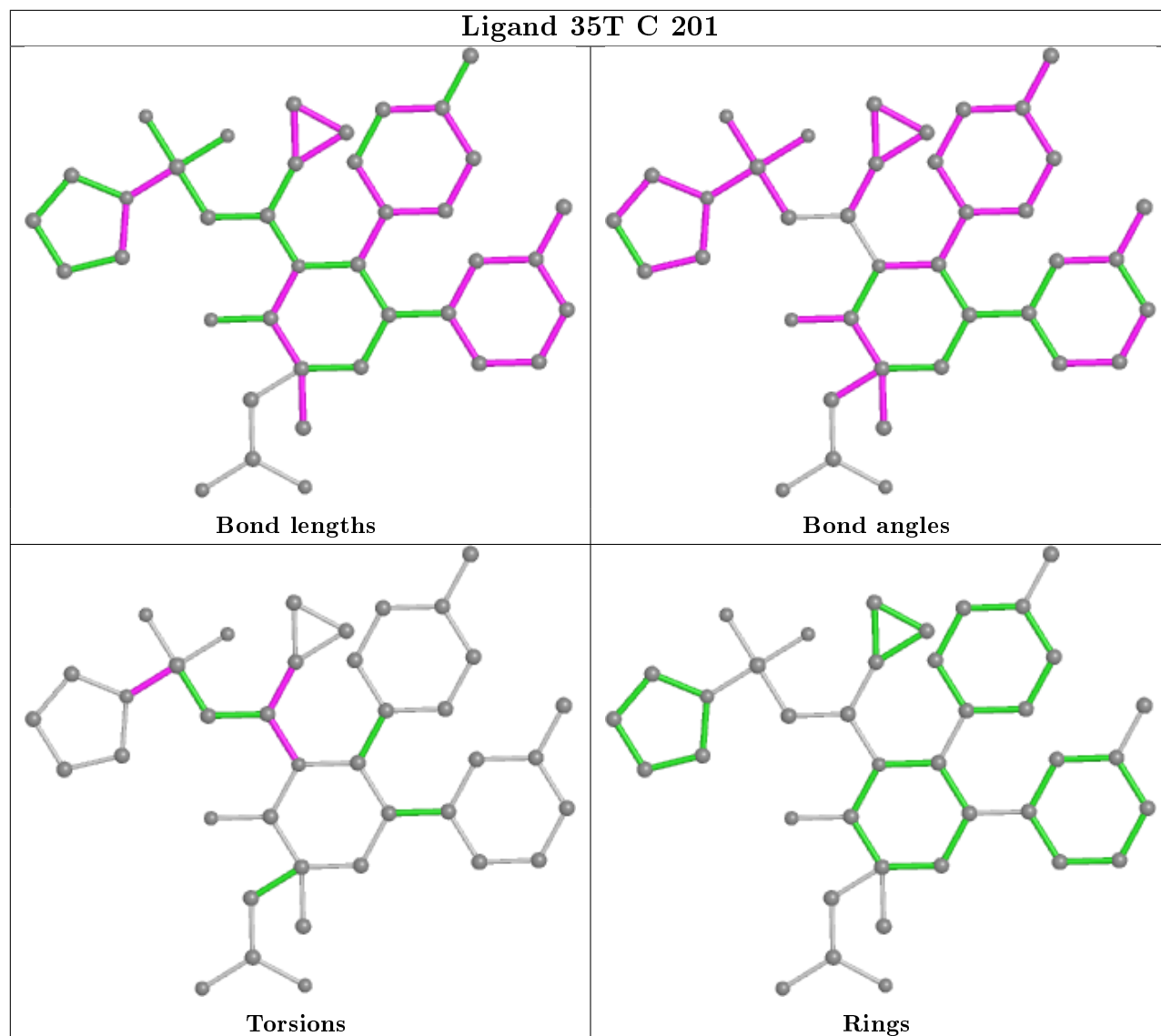
Mol	Chain	Res	Type	Clashes	Symm-Clashes
2	K	201	35T	6	0
2	A	201	35T	1	0
2	C	201	35T	1	0
2	E	201	35T	2	0
2	G	201	35T	3	0
2	I	201	35T	1	0

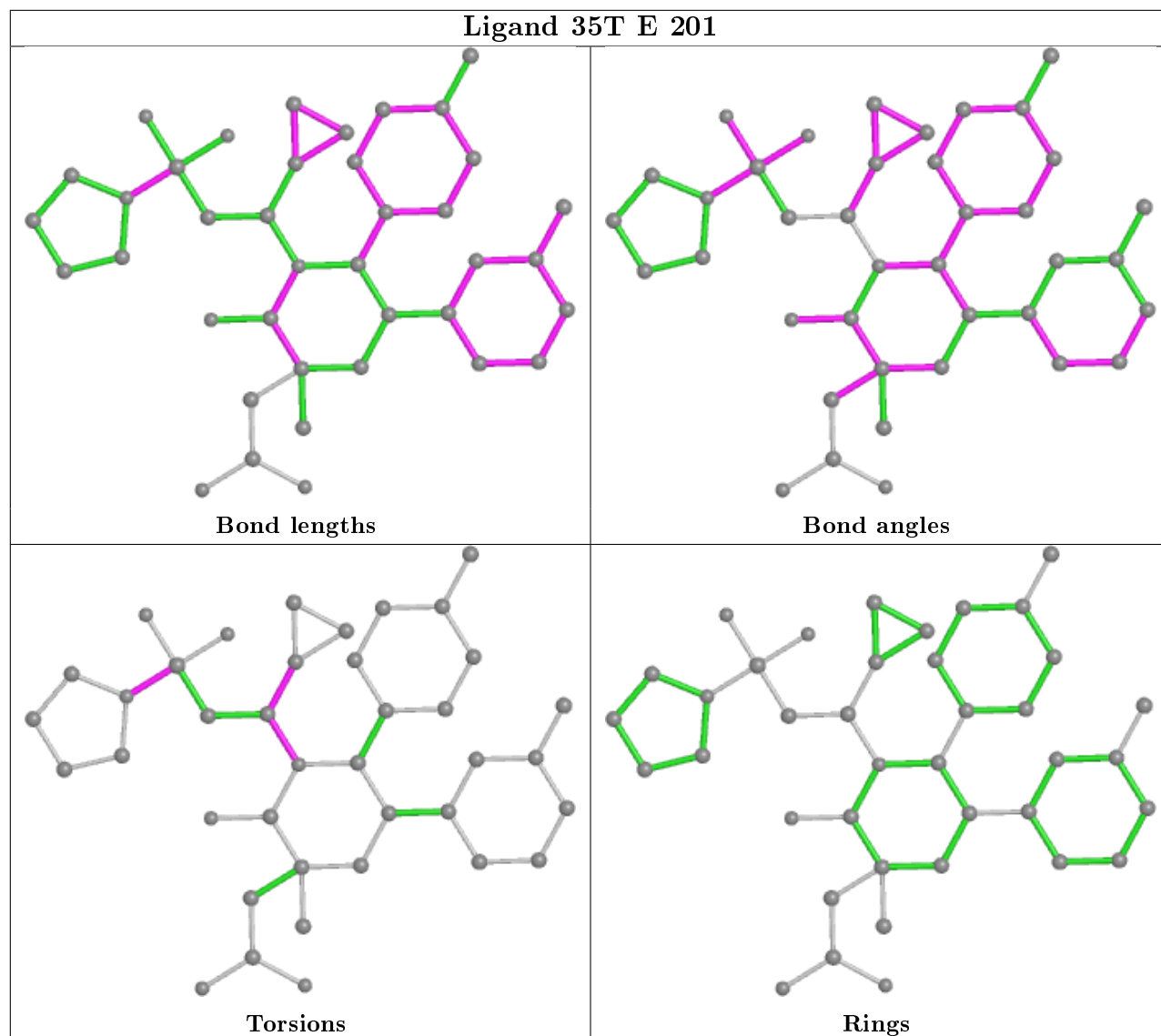
The following is a two-dimensional graphical depiction of Mogul quality analysis of bond lengths, bond angles, torsion angles, and ring geometry for all instances of the Ligand of Interest. In addition, ligands with molecular weight > 250 and outliers as shown on the validation Tables will

also be included. For torsion angles, if less than 5% of the Mogul distribution of torsion angles is within 10 degrees of the torsion angle in question, then that torsion angle is considered an outlier. Any bond that is central to one or more torsion angles identified as an outlier by Mogul will be highlighted in the graph. For rings, the root-mean-square deviation (RMSD) between the ring in question and similar rings identified by Mogul is calculated over all ring torsion angles. If the average RMSD is greater than 60 degrees and the minimal RMSD between the ring in question and any Mogul-identified rings is also greater than 60 degrees, then that ring is considered an outlier. The outliers are highlighted in purple. The color gray indicates Mogul did not find sufficient equivalents in the CSD to analyse the geometry.

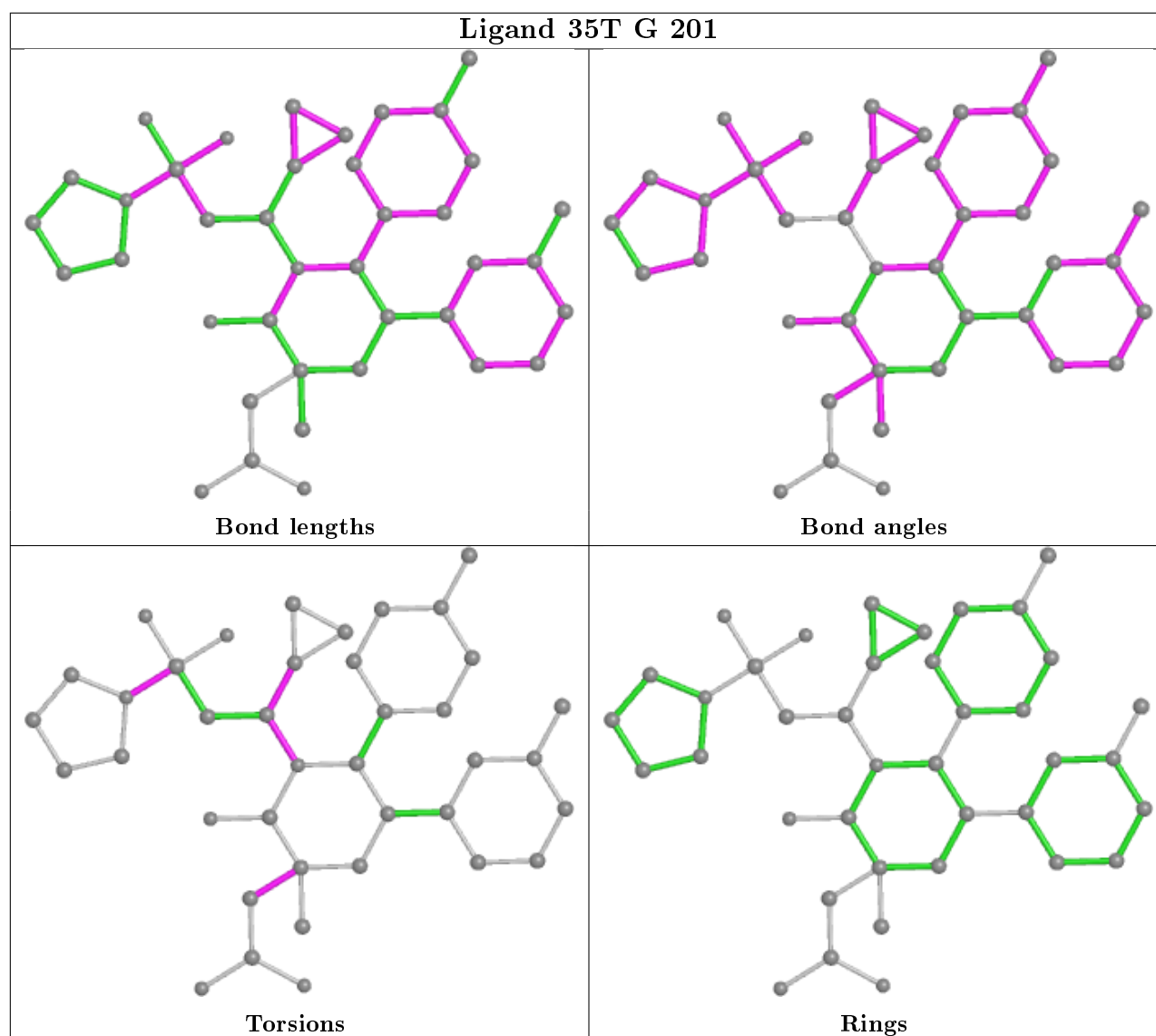


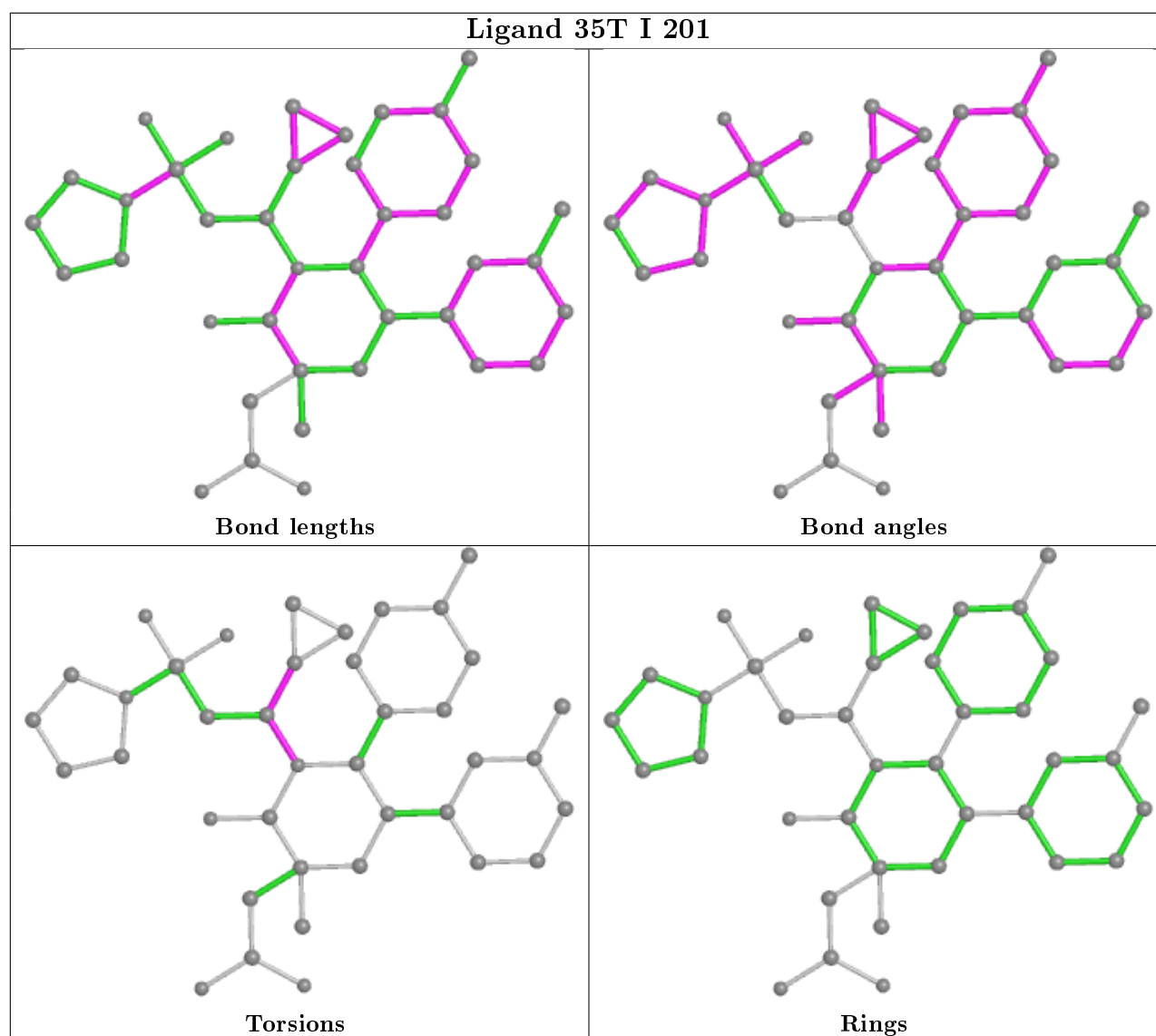












## 5.7 Other polymers [i](#)

There are no such residues in this entry.

## 5.8 Polymer linkage issues [i](#)

There are no chain breaks in this entry.

## 6 Fit of model and data

### 6.1 Protein, DNA and RNA chains

In the following table, the column labelled ‘#RSRZ> 2’ contains the number (and percentage) of RSRZ outliers, followed by percent RSRZ outliers for the chain as percentile scores relative to all X-ray entries and entries of similar resolution. The OWAB column contains the minimum, median, 95<sup>th</sup> percentile and maximum values of the occupancy-weighted average B-factor per residue. The column labelled ‘Q< 0.9’ lists the number of (and percentage) of residues with an average occupancy less than 0.9.

Mol	Chain	Analysed	<RSRZ>	#RSRZ>2	OWAB(Å <sup>2</sup> )	Q<0.9
1	A	92/96 (95%)	0.25	2 (2%) 62 66	11, 18, 32, 40	0
1	C	92/96 (95%)	0.22	3 (3%) 46 51	12, 19, 28, 41	0
1	E	94/96 (97%)	0.54	3 (3%) 47 52	14, 21, 38, 44	0
1	G	94/96 (97%)	1.15	13 (13%) 2 3	15, 29, 43, 48	0
1	I	94/96 (97%)	0.40	2 (2%) 63 67	13, 21, 29, 41	0
1	K	95/96 (98%)	0.61	9 (9%) 8 9	14, 22, 39, 46	0
All	All	561/576 (97%)	0.53	32 (5%) 23 26	11, 21, 39, 48	0

All (32) RSRZ outliers are listed below:

Mol	Chain	Res	Type	RSRZ
1	G	71	GLN	6.7
1	G	63	THR	5.8
1	E	71	GLN	4.8
1	K	17	SER	4.6
1	G	72	GLN	4.5
1	E	111	ASN	4.4
1	K	72	GLN	4.2
1	G	46	ASP	3.8
1	E	21	ALA	3.7
1	G	66	LEU	3.3
1	G	85	LEU	3.2
1	K	79	ASN	2.7
1	K	68	ASP	2.6
1	G	74	ILE	2.5
1	C	110	VAL	2.4
1	G	21	ALA	2.4
1	K	18	GLN	2.4
1	G	43	ALA	2.4
1	C	19	ILE	2.4

*Continued on next page...*

*Continued from previous page...*

Mol	Chain	Res	Type	RSRZ
1	A	69	GLU	2.4
1	K	21	ALA	2.3
1	G	44	GLN	2.3
1	G	33	LEU	2.3
1	K	85	LEU	2.2
1	C	71	GLN	2.2
1	G	65	ARG	2.2
1	I	17	SER	2.2
1	K	84	ASP	2.2
1	I	110	VAL	2.2
1	A	19	ILE	2.1
1	G	79	ASN	2.1
1	K	70	LYS	2.1

## 6.2 Non-standard residues in protein, DNA, RNA chains ⓘ

There are no non-standard protein/DNA/RNA residues in this entry.

## 6.3 Carbohydrates ⓘ

There are no carbohydrates in this entry.

## 6.4 Ligands ⓘ

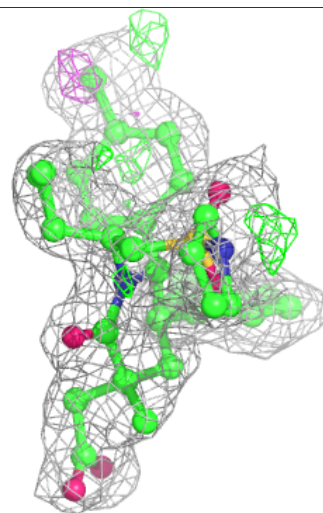
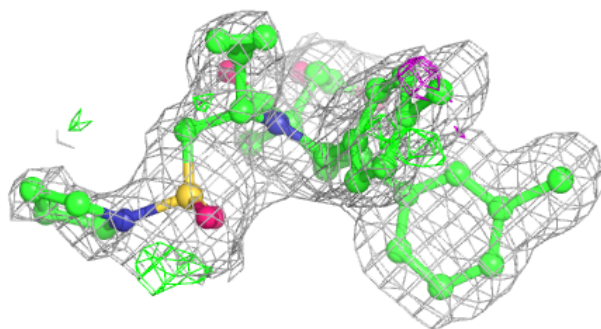
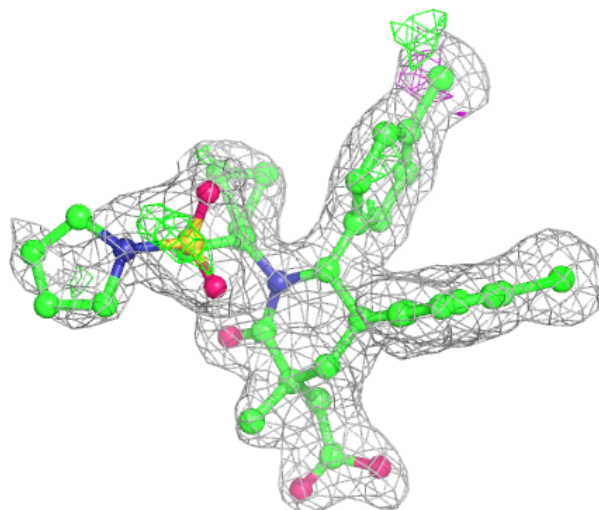
In the following table, the Atoms column lists the number of modelled atoms in the group and the number defined in the chemical component dictionary. The B-factors column lists the minimum, median, 95<sup>th</sup> percentile and maximum values of B factors of atoms in the group. The column labelled 'Q< 0.9' lists the number of atoms with occupancy less than 0.9.

Mol	Type	Chain	Res	Atoms	RSCC	RSR	B-factors(Å <sup>2</sup> )	Q<0.9
2	35T	G	201	39/39	0.87	0.13	24,31,43,43	0
2	35T	E	201	39/39	0.89	0.13	19,22,27,29	0
2	35T	K	201	39/39	0.90	0.12	20,23,31,34	0
2	35T	C	201	39/39	0.90	0.11	18,19,24,25	0
2	35T	A	201	39/39	0.92	0.11	16,19,25,27	0
2	35T	I	201	39/39	0.92	0.12	17,19,28,31	0

The following is a graphical depiction of the model fit to experimental electron density of all instances of the Ligand of Interest. In addition, ligands with molecular weight > 250 and outliers as shown on the geometry validation Tables will also be included. Each fit is shown from different orientation to approximate a three-dimensional view.

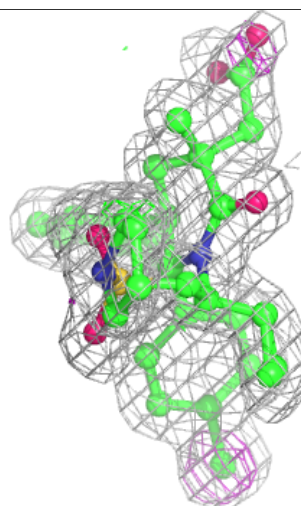
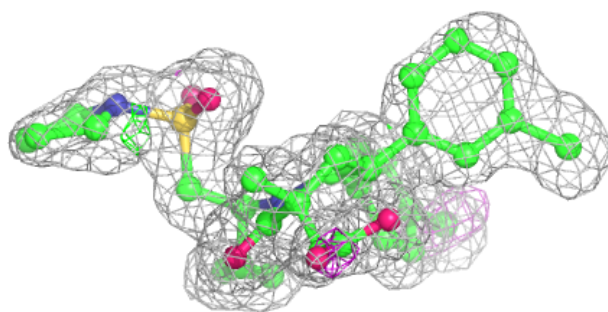
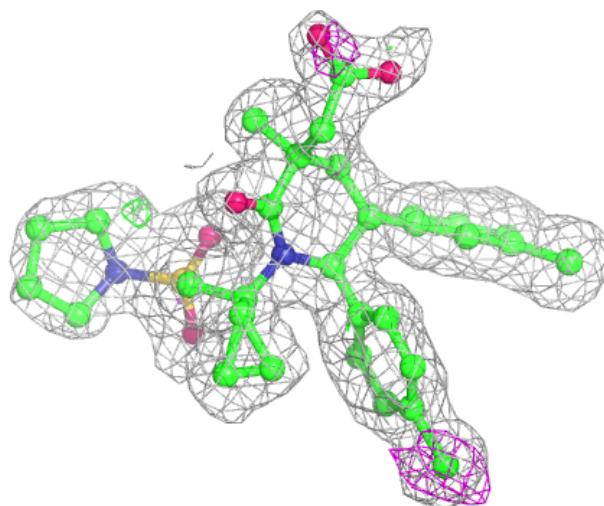
**Electron density around 35T G 201:**

$2mF_o-DF_c$  (at 0.7 rmsd) in gray  
 $mF_o-DF_c$  (at 3 rmsd) in purple (negative)  
and green (positive)



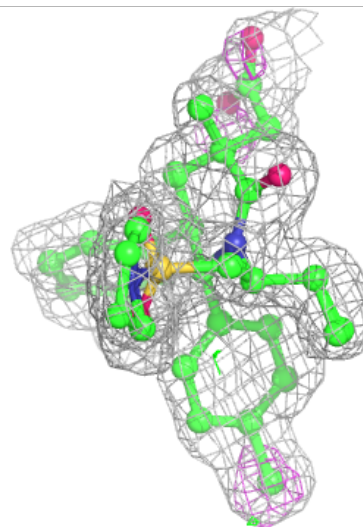
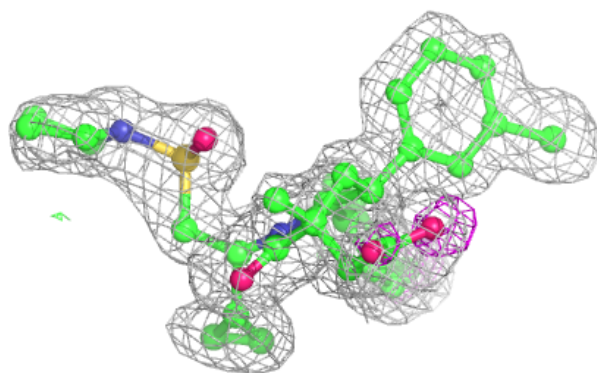
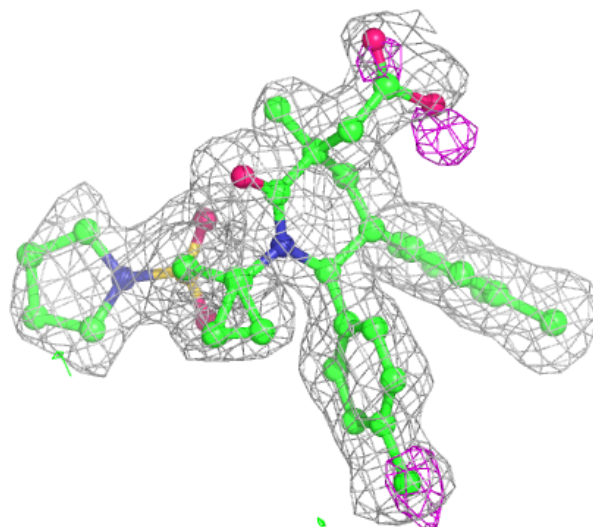
**Electron density around 35T E 201:**

$2mF_o-DF_c$  (at 0.7 rmsd) in gray  
 $mF_o-DF_c$  (at 3 rmsd) in purple (negative)  
and green (positive)



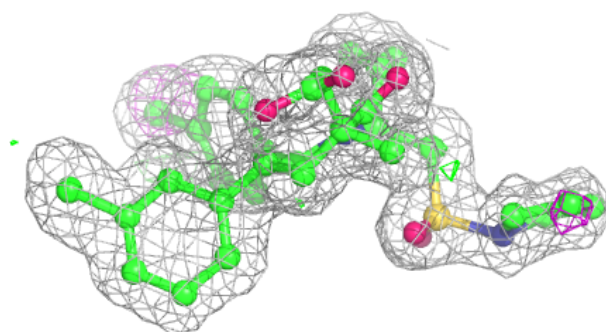
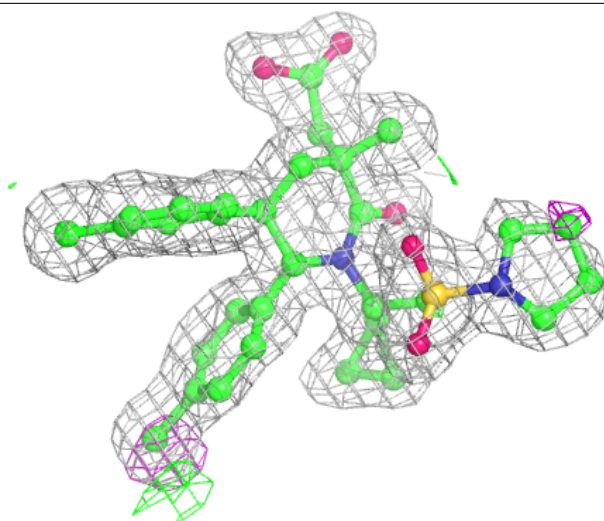
**Electron density around 35T K 201:**

$2mF_o-DF_c$  (at 0.7 rmsd) in gray  
 $mF_o-DF_c$  (at 3 rmsd) in purple (negative)  
and green (positive)



**Electron density around 35T C 201:**

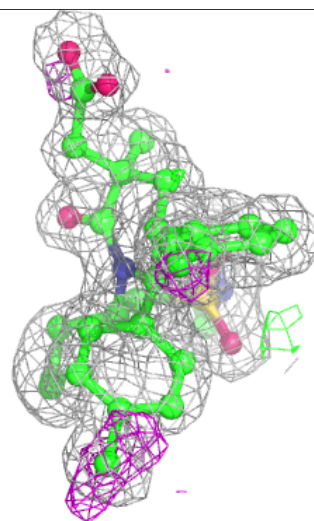
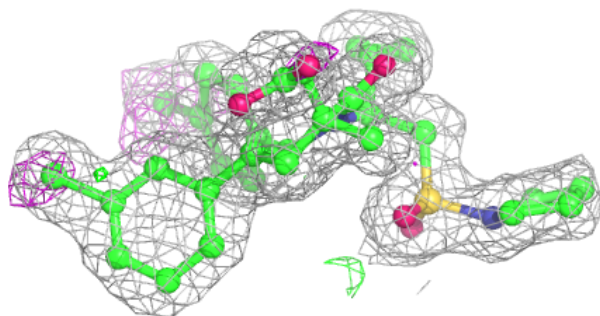
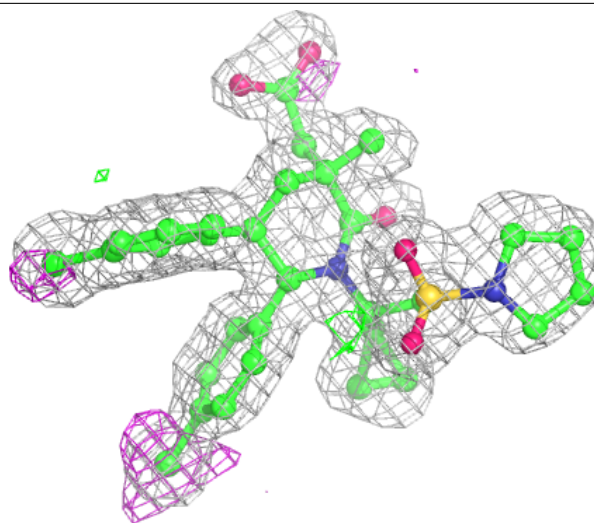
$2mF_o-DF_c$  (at 0.7 rmsd) in gray  
 $mF_o-DF_c$  (at 3 rmsd) in purple (negative)  
and green (positive)





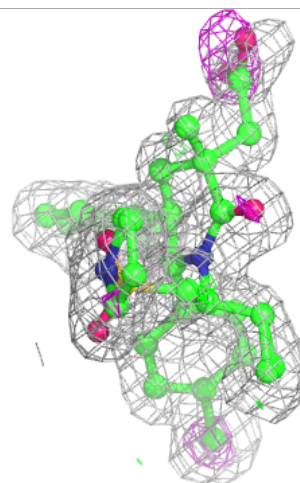
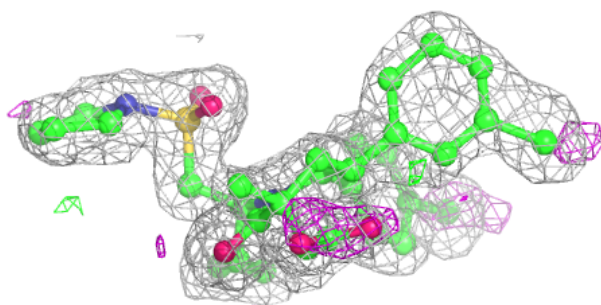
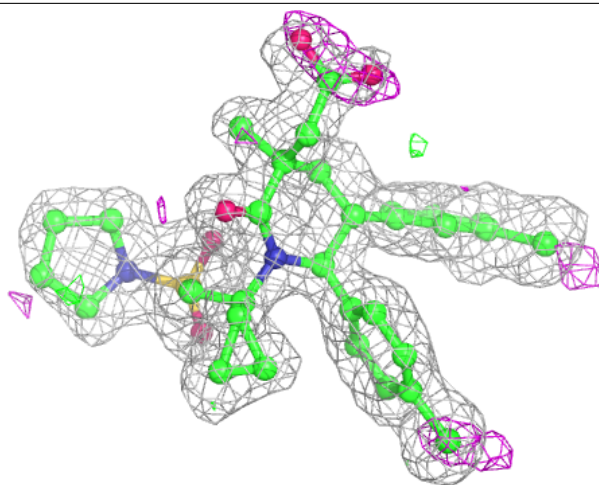
**Electron density around 35T A 201:**

$2mF_o-DF_c$  (at 0.7 rmsd) in gray  
 $mF_o-DF_c$  (at 3 rmsd) in purple (negative)  
and green (positive)



**Electron density around 35T I 201:**

$2mF_o-DF_c$  (at 0.7 rmsd) in gray  
 $mF_o-DF_c$  (at 3 rmsd) in purple (negative)  
and green (positive)



## 6.5 Other polymers [i](#)

There are no such residues in this entry.