



Full wwPDB X-ray Structure Validation Report ⓘ

Jun 15, 2020 – 06:29 am BST

PDB ID : 4QON
Title : Structure of Bacillus pumilus catalase with catechol bound.
Authors : Loewen, P.C.
Deposited on : 2014-06-20
Resolution : 1.80 Å(reported)

This is a Full wwPDB X-ray Structure Validation Report for a publicly released PDB entry.

We welcome your comments at validation@mail.wwpdb.org

A user guide is available at

<https://www.wwpdb.org/validation/2017/XrayValidationReportHelp>

with specific help available everywhere you see the ⓘ symbol.

The following versions of software and data (see [references ⓘ](#)) were used in the production of this report:

MolProbity : 4.02b-467
Mogul : 1.8.5 (274361), CSD as541be (2020)
Xtriage (Phenix) : 1.13
EDS : 2.11
buster-report : 1.1.7 (2018)
Percentile statistics : 20191225.v01 (using entries in the PDB archive December 25th 2019)
Refmac : 5.8.0158
CCP4 : 7.0.044 (Gargrove)
Ideal geometry (proteins) : Engh & Huber (2001)
Ideal geometry (DNA, RNA) : Parkinson et al. (1996)
Validation Pipeline (wwPDB-VP) : 2.11

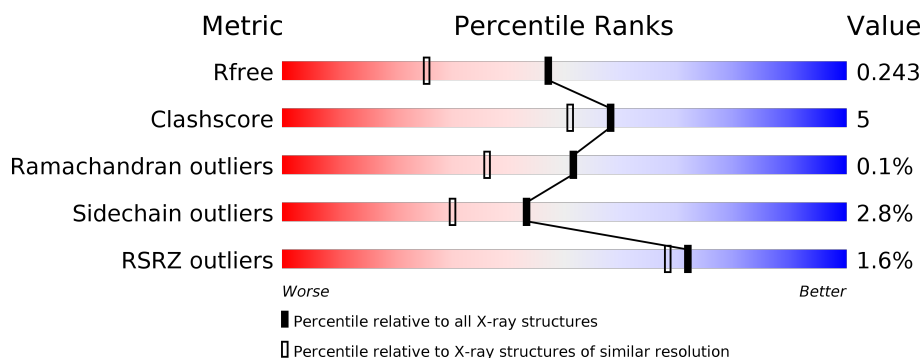
1 Overall quality at a glance ⓘ

The following experimental techniques were used to determine the structure:

X-RAY DIFFRACTION

The reported resolution of this entry is 1.80 Å.

Percentile scores (ranging between 0-100) for global validation metrics of the entry are shown in the following graphic. The table shows the number of entries on which the scores are based.



Metric	Whole archive (#Entries)	Similar resolution (#Entries, resolution range(Å))
R_{free}	130704	5950 (1.80-1.80)
Clashscore	141614	6793 (1.80-1.80)
Ramachandran outliers	138981	6697 (1.80-1.80)
Sidechain outliers	138945	6696 (1.80-1.80)
RSRZ outliers	127900	5850 (1.80-1.80)

The table below summarises the geometric issues observed across the polymeric chains and their fit to the electron density. The red, orange, yellow and green segments on the lower bar indicate the fraction of residues that contain outliers for ≥ 3 , 2, 1 and 0 types of geometric quality criteria respectively. A grey segment represents the fraction of residues that are not modelled. The numeric value for each fraction is indicated below the corresponding segment, with a dot representing fractions $\leq 5\%$. The upper red bar (where present) indicates the fraction of residues that have poor fit to the electron density. The numeric value is given above the bar.

Mol	Chain	Length	Quality of chain
1	A	491	<div> <div>3%</div> <div> <div></div> <div>88%</div> <div>9%</div> <div></div> </div> <div>.</div> </div>
1	B	491	<div> <div>%</div> <div> <div></div> <div>89%</div> <div>9%</div> <div></div> </div> <div>..</div> </div>
1	C	491	<div> <div>%</div> <div> <div></div> <div>89%</div> <div>9%</div> <div></div> </div> <div>.</div> </div>
1	D	491	<div> <div>2%</div> <div> <div></div> <div>90%</div> <div>7%</div> <div></div> </div> <div>.</div> </div>

The following table lists non-polymeric compounds, carbohydrate monomers and non-standard residues in protein, DNA, RNA chains that are outliers for geometric or electron-density-fit crite-

ria:

Mol	Type	Chain	Res	Chirality	Geometry	Clashes	Electron density
3	CAQ	D	504	-	-	X	-

2 Entry composition [i](#)

There are 6 unique types of molecules in this entry. The entry contains 17962 atoms, of which 0 are hydrogens and 0 are deuteriums.

In the tables below, the ZeroOcc column contains the number of atoms modelled with zero occupancy, the AltConf column contains the number of residues with at least one atom in alternate conformation and the Trace column contains the number of residues modelled with at most 2 atoms.

- Molecule 1 is a protein called Catalase.

Mol	Chain	Residues	Atoms					ZeroOcc	AltConf	Trace
1	A	480	Total	C	N	O	S	0	5	0
			3949	2488	692	755	14			
1	B	480	Total	C	N	O	S	0	5	0
			3951	2491	691	754	15			
1	C	480	Total	C	N	O	S	0	6	0
			3962	2498	695	755	14			
1	D	480	Total	C	N	O	S	0	7	0
			3964	2499	693	758	14			

- Molecule 2 is PROTOPORPHYRIN IX CONTAINING FE (three-letter code: HEM) (formula: $C_{34}H_{32}FeN_4O_4$).



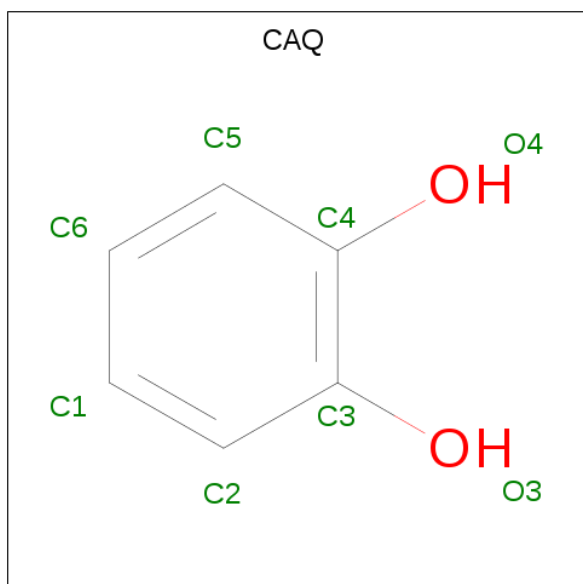
Mol	Chain	Residues	Atoms					ZeroOcc	AltConf
2	A	1	Total	C	Fe	N	O	0	1
			43	34	1	4	4		
2	A	1	Total	C	Fe	N	O	0	1
			43	34	1	4	4		

Continued on next page...

Continued from previous page...

Mol	Chain	Residues	Atoms				ZeroOcc	AltConf
2	B	1	Total	C	Fe	N	O	
			43	34	1	4	4	
2	B	1	Total	C	Fe	N	O	
			43	34	1	4	4	
2	C	1	Total	C	Fe	N	O	
			43	34	1	4	4	
2	C	1	Total	C	Fe	N	O	
			43	34	1	4	4	
2	D	1	Total	C	Fe	N	O	
			43	34	1	4	4	
2	D	1	Total	C	Fe	N	O	
			43	34	1	4	4	

- Molecule 3 is CATECHOL (three-letter code: CAQ) (formula: $C_6H_6O_2$).



Mol	Chain	Residues	Atoms			ZeroOcc	AltConf
3	A	1	Total	C	O		
			8	6	2		
3	A	1	Total	C	O		
			8	6	2		
3	B	1	Total	C	O		
			8	6	2		
3	B	1	Total	C	O		
			8	6	2		
3	B	1	Total	C	O		
			8	6	2		

Continued on next page...

Continued from previous page...

Mol	Chain	Residues	Atoms			ZeroOcc	AltConf
3	C	1	Total	C	O	0	0
			8	6	2		
3	C	1	Total	C	O	0	0
			8	6	2		
3	C	1	Total	C	O	0	0
			8	6	2		
3	D	1	Total	C	O	0	0
			8	6	2		
3	D	1	Total	C	O	0	0
			8	6	2		
3	D	1	Total	C	O	0	0
			8	6	2		

- Molecule 4 is CHLORIDE ION (three-letter code: CL) (formula: Cl).

Mol	Chain	Residues	Atoms		ZeroOcc	AltConf
4	B	1	Total	Cl	0	0
			1	1		
4	A	2	Total	Cl	0	0
			2	2		
4	D	1	Total	Cl	0	0
			1	1		
4	C	2	Total	Cl	0	0
			2	2		

- Molecule 5 is SODIUM ION (three-letter code: NA) (formula: Na).

Mol	Chain	Residues	Atoms		ZeroOcc	AltConf
5	B	1	Total	Na	0	0
			1	1		
5	A	1	Total	Na	0	0
			1	1		

- Molecule 6 is water.

Mol	Chain	Residues	Atoms		ZeroOcc	AltConf
6	A	423	Total	O	0	0
			423	423		
6	B	425	Total	O	0	0
			425	425		
6	C	445	Total	O	0	0
			445	445		

Continued on next page...

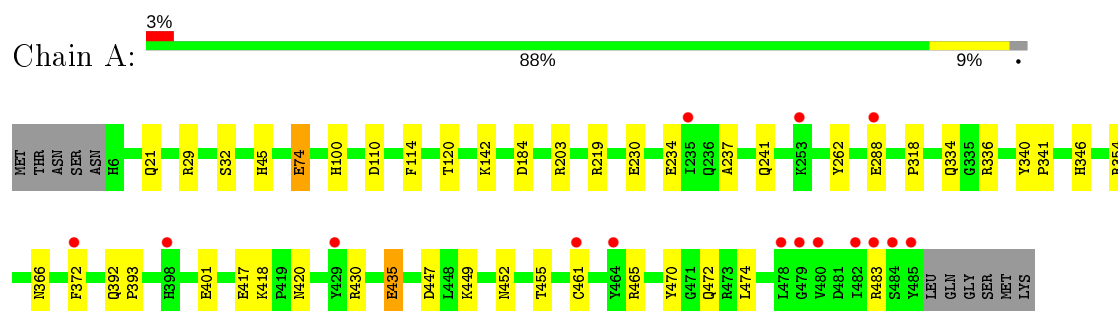
Continued from previous page...

Mol	Chain	Residues	Atoms		ZeroOcc	AltConf
6	D	403	Total 403	O 403	0	0

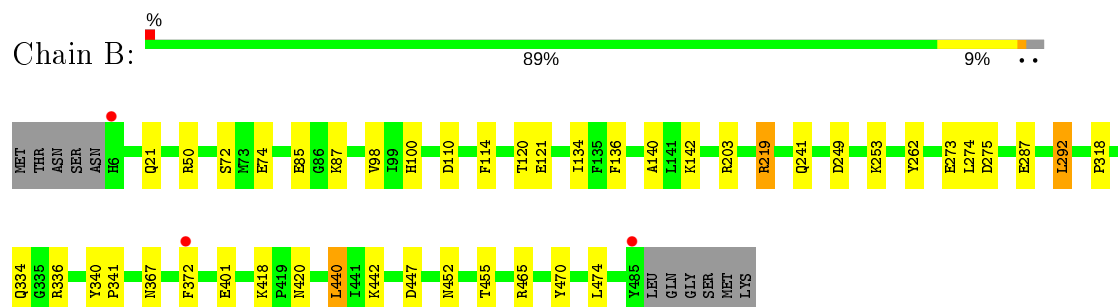
3 Residue-property plots [i](#)

These plots are drawn for all protein, RNA and DNA chains in the entry. The first graphic for a chain summarises the proportions of the various outlier classes displayed in the second graphic. The second graphic shows the sequence view annotated by issues in geometry and electron density. Residues are color-coded according to the number of geometric quality criteria for which they contain at least one outlier: green = 0, yellow = 1, orange = 2 and red = 3 or more. A red dot above a residue indicates a poor fit to the electron density ($RSRZ > 2$). Stretches of 2 or more consecutive residues without any outlier are shown as a green connector. Residues present in the sample, but not in the model, are shown in grey.

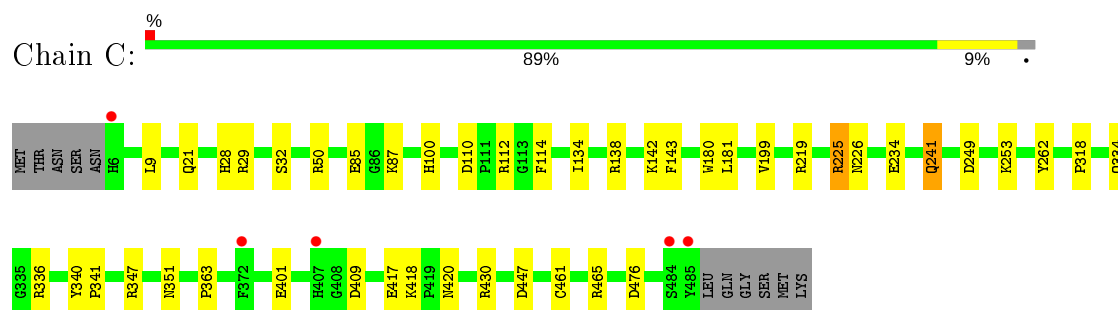
• Molecule 1: Catalase



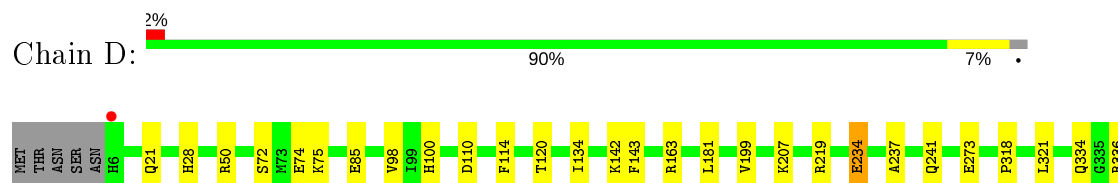
• Molecule 1: Catalase

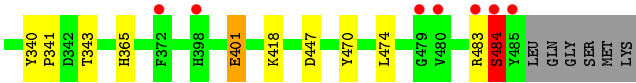


• Molecule 1: Catalase



• Molecule 1: Catalase





4 Data and refinement statistics

Property	Value	Source
Space group	P 1 21 1	Depositor
Cell constants a, b, c, α , β , γ	92.14Å 109.12Å 103.69Å 90.00° 92.20° 90.00°	Depositor
Resolution (Å)	109.12 – 1.80 46.94 – 1.80	Depositor EDS
% Data completeness (in resolution range)	91.3 (109.12-1.80) 91.3 (46.94-1.80)	Depositor EDS
R_{merge}	(Not available)	Depositor
R_{sym}	0.07	Depositor
$\langle I/\sigma(I) \rangle$ ¹	2.23 (at 1.79Å)	Xtriage
Refinement program	REFMAC 5.8.0069	Depositor
R, R_{free}	0.206 , 0.238 0.212 , 0.243	Depositor DCC
R_{free} test set	8813 reflections (5.10%)	wwPDB-VP
Wilson B-factor (Å ²)	18.8	Xtriage
Anisotropy	0.345	Xtriage
Bulk solvent k_{sol} (e/Å ³), B_{sol} (Å ²)	0.30 , 44.8	EDS
L-test for twinning ²	$\langle L \rangle = 0.43$, $\langle L^2 \rangle = 0.26$	Xtriage
Estimated twinning fraction	0.137 for h,-k,-l	Xtriage
F_o, F_c correlation	0.93	EDS
Total number of atoms	17962	wwPDB-VP
Average B, all atoms (Å ²)	22.0	wwPDB-VP

Xtriage's analysis on translational NCS is as follows: *The largest off-origin peak in the Patterson function is 4.27% of the height of the origin peak. No significant pseudotranslation is detected.*

¹Intensities estimated from amplitudes.

²Theoretical values of $\langle |L| \rangle$, $\langle L^2 \rangle$ for acentric reflections are 0.5, 0.333 respectively for untwinned datasets, and 0.375, 0.2 for perfectly twinned datasets.

5 Model quality

5.1 Standard geometry

Bond lengths and bond angles in the following residue types are not validated in this section: HEM, CAQ, CL, NA

The Z score for a bond length (or angle) is the number of standard deviations the observed value is removed from the expected value. A bond length (or angle) with $|Z| > 5$ is considered an outlier worth inspection. RMSZ is the root-mean-square of all Z scores of the bond lengths (or angles).

Mol	Chain	Bond lengths		Bond angles	
		RMSZ	# Z >5	RMSZ	# Z >5
1	A	0.81	0/4068	0.83	2/5516 (0.0%)
1	B	0.89	0/4069	0.85	3/5516 (0.1%)
1	C	0.95	0/4080	0.91	8/5531 (0.1%)
1	D	0.78	0/4085	0.81	3/5537 (0.1%)
All	All	0.86	0/16302	0.85	16/22100 (0.1%)

Chiral center outliers are detected by calculating the chiral volume of a chiral center and verifying if the center is modelled as a planar moiety or with the opposite hand. A planarity outlier is detected by checking planarity of atoms in a peptide group, atoms in a mainchain group or atoms of a sidechain that are expected to be planar.

Mol	Chain	#Chirality outliers	#Planarity outliers
1	D	0	1

There are no bond length outliers.

All (16) bond angle outliers are listed below:

Mol	Chain	Res	Type	Atoms	Z	Observed(°)	Ideal(°)
1	B	50	ARG	NE-CZ-NH2	-7.38	116.61	120.30
1	C	225	ARG	CG-CD-NE	-6.60	97.95	111.80
1	C	50	ARG	NE-CZ-NH1	6.23	123.42	120.30
1	C	225	ARG	NE-CZ-NH1	-6.23	117.18	120.30
1	A	203	ARG	NE-CZ-NH2	-6.04	117.28	120.30
1	C	430	ARG	NE-CZ-NH1	5.97	123.29	120.30
1	C	138	ARG	NE-CZ-NH1	5.96	123.28	120.30
1	D	50	ARG	NE-CZ-NH1	5.91	123.25	120.30
1	C	50	ARG	NE-CZ-NH2	-5.87	117.36	120.30
1	C	112	ARG	NE-CZ-NH2	-5.86	117.37	120.30
1	C	430	ARG	NE-CZ-NH2	-5.81	117.40	120.30
1	B	203	ARG	NE-CZ-NH2	-5.62	117.49	120.30

Continued on next page...

Continued from previous page...

Mol	Chain	Res	Type	Atoms	Z	Observed(°)	Ideal(°)
1	D	163	ARG	NE-CZ-NH2	5.56	123.08	120.30
1	A	461	CYS	CA-CB-SG	-5.50	104.11	114.00
1	D	219	ARG	NE-CZ-NH1	5.21	122.91	120.30
1	B	440	LEU	CA-CB-CG	5.04	126.90	115.30

There are no chirality outliers.

All (1) planarity outliers are listed below:

Mol	Chain	Res	Type	Group
1	D	484	SER	Peptide

5.2 Too-close contacts

In the following table, the Non-H and H(model) columns list the number of non-hydrogen atoms and hydrogen atoms in the chain respectively. The H(added) column lists the number of hydrogen atoms added and optimized by MolProbity. The Clashes column lists the number of clashes within the asymmetric unit, whereas Symm-Clashes lists symmetry related clashes.

Mol	Chain	Non-H	H(model)	H(added)	Clashes	Symm-Clashes
1	A	3949	0	3748	38	1
1	B	3951	0	3756	26	1
1	C	3962	0	3771	30	2
1	D	3964	0	3771	29	1
2	A	86	0	60	14	0
2	B	86	0	60	9	0
2	C	86	0	60	14	0
2	D	86	0	60	11	0
3	A	16	0	9	0	0
3	B	24	0	16	2	0
3	C	24	0	14	1	0
3	D	24	0	15	6	0
4	A	2	0	0	0	0
4	B	1	0	0	0	0
4	C	2	0	0	0	0
4	D	1	0	0	0	0
5	A	1	0	0	0	0
5	B	1	0	0	0	0
6	A	423	0	0	20	2
6	B	425	0	0	9	1
6	C	445	0	0	13	2
6	D	403	0	0	13	0

Continued on next page...

Continued from previous page...

Mol	Chain	Non-H	H(model)	H(added)	Clashes	Symm-Clashes
All	All	17962	0	15340	153	5

The all-atom clashscore is defined as the number of clashes found per 1000 atoms (including hydrogen atoms). The all-atom clashscore for this structure is 5.

All (153) close contacts within the same asymmetric unit are listed below, sorted by their clash magnitude.

Atom-1	Atom-2	Interatomic distance (Å)	Clash overlap (Å)
2:A:501[A]:HEM:HMB2	2:A:501[A]:HEM:HBB2	1.34	1.07
2:C:501[A]:HEM:HMB2	2:C:501[A]:HEM:HBB2	1.30	1.07
2:B:501[A]:HEM:HMB2	2:B:501[A]:HEM:HBB2	1.38	1.05
2:C:501[A]:HEM:HBC2	2:C:501[A]:HEM:CMC	1.87	1.03
2:C:501[A]:HEM:HBC2	2:C:501[A]:HEM:HMC2	1.40	0.99
2:B:501[A]:HEM:HBC2	2:B:501[A]:HEM:HMC2	1.46	0.97
1:B:372[A]:PHE:CE2	6:D:889:HOH:O	2.19	0.96
2:A:501[A]:HEM:CMB	2:A:501[A]:HEM:HBB2	1.98	0.94
1:C:28:HIS:ND1	6:C:846:HOH:O	2.02	0.92
2:B:501[A]:HEM:CMC	2:B:501[A]:HEM:HBC2	2.00	0.90
2:C:501[A]:HEM:CMB	2:C:501[A]:HEM:HBB2	2.03	0.87
2:B:501[A]:HEM:CMB	2:B:501[A]:HEM:HBB2	1.99	0.84
2:D:501[A]:HEM:HMC2	2:D:501[A]:HEM:HBC2	1.61	0.81
2:C:501[A]:HEM:CBC	2:C:501[A]:HEM:HMC2	2.10	0.80
1:A:219:ARG:HA	6:A:997:HOH:O	1.82	0.79
2:A:501[A]:HEM:HBC2	2:A:501[A]:HEM:CMC	2.12	0.79
1:A:74:GLU:OE1	6:A:1018:HOH:O	2.03	0.75
2:A:501[A]:HEM:HMB2	2:A:501[A]:HEM:CBB	2.14	0.74
1:D:483:ARG:O	1:D:484:SER:OG	2.05	0.74
2:D:501[A]:HEM:CMC	2:D:501[A]:HEM:HBC2	2.17	0.73
3:D:504:CAQ:O4	6:D:864:HOH:O	2.07	0.72
2:D:501[A]:HEM:HMB2	2:D:501[A]:HEM:HBB2	1.69	0.72
1:A:45:HIS:HE1	1:C:351:ASN:OD1	1.71	0.72
2:B:501[A]:HEM:CBC	2:B:501[A]:HEM:HMC2	2.19	0.69
2:B:502[B]:HEM:CMC	2:B:502[B]:HEM:HBC2	2.22	0.68
1:D:85:GLU:HG2	6:D:1000:HOH:O	1.93	0.68
1:A:430:ARG:NH1	6:A:763:HOH:O	2.19	0.67
1:D:401:GLU:OE1	6:D:926:HOH:O	2.12	0.67
1:A:29:ARG:O	6:A:835:HOH:O	2.12	0.66
2:B:501[A]:HEM:HMB2	2:B:501[A]:HEM:CBB	2.19	0.66
1:C:85:GLU:OE1	6:C:911:HOH:O	2.14	0.66
1:B:287:GLU:CD	1:B:292:LEU:HD21	2.16	0.65
1:B:452:ASN:HD22	1:B:455:THR:H	1.44	0.65

Continued on next page...

Continued from previous page...

Atom-1	Atom-2	Interatomic distance (Å)	Clash overlap (Å)
1:A:452:ASN:HD22	1:A:455:THR:H	1.45	0.64
1:C:29:ARG:HB3	6:C:846:HOH:O	1.98	0.64
2:A:502[B]:HEM:HBB2	2:A:502[B]:HEM:CMB	2.27	0.64
2:D:501[A]:HEM:HBB2	2:D:501[A]:HEM:CMB	2.26	0.63
1:A:449:LYS:NZ	6:A:1023:HOH:O	2.31	0.63
1:A:483:ARG:NH1	6:A:870:HOH:O	1.97	0.63
1:C:32:SER:HB3	6:C:695:HOH:O	1.99	0.63
1:D:483:ARG:O	1:D:484:SER:CB	2.47	0.63
1:D:181:LEU:HD21	3:D:504:CAQ:H2	1.82	0.62
2:A:502[B]:HEM:HBB2	2:A:502[B]:HEM:HMB1	1.81	0.62
1:A:100:HIS:HE1	6:D:670:HOH:O	1.83	0.61
2:A:501[A]:HEM:CBC	2:A:501[A]:HEM:CMC	2.78	0.61
1:B:372[A]:PHE:CD2	6:D:889:HOH:O	2.50	0.59
2:C:501[A]:HEM:HMB2	2:C:501[A]:HEM:CBB	2.11	0.59
1:B:442:LYS:NZ	6:B:1009:HOH:O	2.28	0.58
1:C:219:ARG:HD3	1:C:262:TYR:CD1	2.39	0.58
1:D:181:LEU:HD21	3:D:504:CAQ:C2	2.33	0.58
1:C:28:HIS:CE1	6:C:846:HOH:O	2.53	0.57
1:A:219:ARG:HD3	1:A:262:TYR:CE1	2.39	0.57
1:D:134[B]:ILE:HD13	1:D:134[B]:ILE:H	1.69	0.56
1:C:219:ARG:HD3	1:C:262:TYR:CE1	2.39	0.56
6:A:970:HOH:O	1:D:334:GLN:HG3	2.04	0.56
1:B:100:HIS:HE1	6:C:705:HOH:O	1.88	0.56
1:B:134[B]:ILE:HD13	1:B:134[B]:ILE:H	1.71	0.56
1:A:334:GLN:HG3	6:A:914:HOH:O	2.05	0.56
1:B:367:ASN:ND2	6:B:640:HOH:O	2.39	0.55
1:D:28:HIS:CD2	6:D:965:HOH:O	2.60	0.55
1:A:346:HIS:HE1	6:D:889:HOH:O	1.90	0.55
1:C:461:CYS:SG	1:C:465:ARG:NH2	2.80	0.54
1:D:199:VAL:HG11	2:D:502[B]:HEM:CBB	2.38	0.54
1:D:100:HIS:HE1	6:D:795:HOH:O	1.91	0.54
2:A:501[A]:HEM:HMC3	2:A:501[A]:HEM:HBC2	1.88	0.53
1:C:199:VAL:HG11	2:C:502[B]:HEM:CBB	2.39	0.53
1:A:435:GLU:HG2	6:A:971:HOH:O	2.07	0.53
1:B:465:ARG:NH2	6:B:928:HOH:O	2.42	0.52
1:A:472:GLN:HB3	6:A:1003:HOH:O	2.07	0.52
1:A:219:ARG:HD3	1:A:262:TYR:CD1	2.45	0.52
1:C:363:PRO:HD2	6:C:981:HOH:O	2.10	0.52
1:D:85:GLU:CG	6:D:1000:HOH:O	2.56	0.51
2:A:501[A]:HEM:CBC	2:A:501[A]:HEM:HMC2	2.40	0.51
1:B:140:ALA:HA	2:B:501[A]:HEM:HBB1	1.93	0.51

Continued on next page...

Continued from previous page...

Atom-1	Atom-2	Interatomic distance (Å)	Clash overlap (Å)
1:C:199:VAL:HG11	2:C:502[B]:HEM:HBB1	1.93	0.51
1:B:136:PHE:CZ	3:B:504:CAQ:H2	2.46	0.50
1:C:219:ARG:HD2	6:C:729:HOH:O	2.12	0.50
2:C:502[B]:HEM:HBC2	2:C:502[B]:HEM:CMC	2.42	0.50
1:D:72[B]:SER:OG	1:D:74:GLU:OE1	2.07	0.50
2:A:502[B]:HEM:CMC	2:A:502[B]:HEM:HBC2	2.42	0.49
1:C:134[B]:ILE:HD11	1:C:180:TRP:CD1	2.47	0.49
2:C:502[B]:HEM:CMB	2:C:502[B]:HEM:HBB2	2.42	0.49
1:D:321:LEU:HD12	6:D:829:HOH:O	2.13	0.49
2:B:502[B]:HEM:CMC	2:B:502[B]:HEM:CBC	2.91	0.48
2:D:501[A]:HEM:HMC2	2:D:501[A]:HEM:CBC	2.36	0.48
1:D:207:LYS:NZ	6:D:839:HOH:O	2.45	0.48
1:C:87:LYS:NZ	6:C:1001:HOH:O	2.46	0.48
1:A:417:GLU:HG3	1:D:28:HIS:CE1	2.48	0.48
1:A:142:LYS:HD3	1:D:21:GLN:HA	1.94	0.48
1:C:476:ASP:OD1	6:C:886:HOH:O	2.20	0.48
1:A:21:GLN:HA	1:D:142:LYS:HD3	1.96	0.48
1:A:219:ARG:HG2	6:A:997:HOH:O	2.14	0.48
1:A:452:ASN:ND2	1:A:455:THR:H	2.12	0.48
2:C:501[A]:HEM:HMC3	2:C:501[A]:HEM:HBC2	1.88	0.47
1:B:452:ASN:ND2	1:B:455:THR:H	2.12	0.47
1:D:143:PHE:CZ	3:D:503:CAQ:H5	2.50	0.47
1:B:334:GLN:HG3	6:C:706:HOH:O	2.15	0.47
1:A:472:GLN:OE1	6:A:867:HOH:O	2.21	0.47
1:A:336:ARG:HG3	2:A:502[B]:HEM:HMC3	1.95	0.47
1:D:343:THR:HG21	2:D:501[A]:HEM:HBA1	1.97	0.47
2:A:501[A]:HEM:HBC2	2:A:501[A]:HEM:HMC2	1.96	0.46
1:A:392:GLN:NE2	6:A:735:HOH:O	2.40	0.46
2:D:501[A]:HEM:HMB2	2:D:501[A]:HEM:CBB	2.44	0.45
2:A:502[B]:HEM:CBB	2:A:502[B]:HEM:HMB1	2.46	0.45
1:D:143:PHE:CD2	2:D:501[A]:HEM:CMB	3.00	0.45
1:A:230:GLU:O	1:A:234:GLU:HG3	2.15	0.45
2:C:502[B]:HEM:HMB1	2:C:502[B]:HEM:HBB2	1.99	0.45
1:A:32:SER:HB3	6:A:790:HOH:O	2.17	0.44
1:D:318:PRO:HG2	1:D:336:ARG:HB3	1.99	0.44
6:B:967:HOH:O	1:D:365:HIS:HD2	2.00	0.44
1:A:372[A]:PHE:HE1	1:C:347:ARG:O	2.00	0.44
1:B:87:LYS:NZ	1:B:121:GLU:OE2	2.45	0.44
1:B:21:GLN:HA	1:C:142:LYS:HD3	1.99	0.44
1:C:181:LEU:HD21	3:C:503:CAQ:C5	2.47	0.44
2:C:501[A]:HEM:CMB	2:C:501[A]:HEM:CBB	2.78	0.44

Continued on next page...

Continued from previous page...

Atom-1	Atom-2	Interatomic distance (Å)	Clash overlap (Å)
1:B:98:VAL:HG11	3:B:503:CAQ:C6	2.48	0.43
6:B:841:HOH:O	1:C:334:GLN:HG3	2.17	0.43
1:A:366:ASN:HA	1:C:9[B]:LEU:CD2	2.49	0.43
1:B:142:LYS:HD3	1:C:21:GLN:HA	1.99	0.43
1:C:340:TYR:HB2	1:C:341:PRO:HD3	1.99	0.43
1:B:340:TYR:HB2	1:B:341:PRO:HD3	2.01	0.43
1:A:435:GLU:CG	6:A:971:HOH:O	2.64	0.43
1:B:318:PRO:HG2	1:B:336:ARG:HB3	1.99	0.43
1:C:241:GLN:NE2	6:C:705:HOH:O	2.32	0.43
1:C:318:PRO:HG2	1:C:336:ARG:HB3	2.00	0.42
1:D:340:TYR:HB2	1:D:341:PRO:HD3	2.02	0.42
1:A:318:PRO:HG2	1:A:336:ARG:HB3	2.00	0.42
1:A:184:ASP:HB2	6:A:996:HOH:O	2.19	0.42
1:A:219:ARG:HD2	6:A:854:HOH:O	2.18	0.42
1:B:274:LEU:HA	6:B:812:HOH:O	2.20	0.42
1:D:98:VAL:HG11	3:D:503:CAQ:C1	2.49	0.42
1:B:72:SER:OG	1:B:74:GLU:OE1	2.38	0.41
1:A:354:ARG:NH2	6:A:925:HOH:O	2.52	0.41
1:A:465:ARG:NH2	6:A:1002:HOH:O	2.53	0.41
1:A:393:PRO:HB2	1:C:9[B]:LEU:HD23	2.02	0.41
1:C:143:PHE:CD2	2:C:501[A]:HEM:CMB	3.03	0.41
2:D:502[B]:HEM:CMC	2:D:502[B]:HEM:HBC2	2.51	0.41
2:A:502[B]:HEM:CBB	2:A:502[B]:HEM:CMB	2.97	0.41
1:B:142:LYS:HE2	6:B:851:HOH:O	2.20	0.41
6:B:739:HOH:O	1:C:100:HIS:HE1	2.03	0.41
1:B:219:ARG:NH2	1:B:262:TYR:OH	2.54	0.41
1:C:249:ASP:O	1:C:253:LYS:HG2	2.21	0.41
1:D:181:LEU:CD2	3:D:504:CAQ:H2	2.48	0.41
1:A:142:LYS:HE2	6:A:843:HOH:O	2.21	0.41
1:A:237:ALA:HB2	1:D:237:ALA:HB2	2.02	0.41
1:B:249:ASP:O	1:B:253:LYS:HG2	2.21	0.41
1:C:226:ASN:ND2	6:C:725:HOH:O	2.54	0.41
1:A:340:TYR:HB2	1:A:341:PRO:HD3	2.02	0.40
1:A:346:HIS:CE1	6:D:889:HOH:O	2.69	0.40
1:D:199:VAL:HG11	2:D:502[B]:HEM:HBB1	2.02	0.40
1:B:275:ASP:HB3	6:B:858:HOH:O	2.20	0.40

All (5) symmetry-related close contacts are listed below. The label for Atom-2 includes the symmetry operator and encoded unit-cell translations to be applied.

Atom-1	Atom-2	Interatomic distance (Å)	Clash overlap (Å)
6:A:836:HOH:O	6:C:990:HOH:O[2_656]	1.99	0.21
1:B:273:GLU:OE1	1:C:417:GLU:OE2[1_455]	2.02	0.18
1:C:234:GLU:OE1	6:A:952:HOH:O[2_646]	2.09	0.11
1:D:234:GLU:OE2	6:B:884:HOH:O[2_655]	2.12	0.08
1:A:74:GLU:OE2	6:C:770:HOH:O[2_656]	2.12	0.08

5.3 Torsion angles [i](#)

5.3.1 Protein backbone [i](#)

In the following table, the Percentiles column shows the percent Ramachandran outliers of the chain as a percentile score with respect to all X-ray entries followed by that with respect to entries of similar resolution.

The Analysed column shows the number of residues for which the backbone conformation was analysed, and the total number of residues.

Mol	Chain	Analysed	Favoured	Allowed	Outliers	Percentiles	
1	A	483/491 (98%)	473 (98%)	10 (2%)	0	100	100
1	B	483/491 (98%)	472 (98%)	11 (2%)	0	100	100
1	C	484/491 (99%)	471 (97%)	13 (3%)	0	100	100
1	D	485/491 (99%)	470 (97%)	14 (3%)	1 (0%)	47	33
All	All	1935/1964 (98%)	1886 (98%)	48 (2%)	1 (0%)	51	36

All (1) Ramachandran outliers are listed below:

Mol	Chain	Res	Type
1	D	484	SER

5.3.2 Protein sidechains [i](#)

In the following table, the Percentiles column shows the percent sidechain outliers of the chain as a percentile score with respect to all X-ray entries followed by that with respect to entries of similar resolution.

The Analysed column shows the number of residues for which the sidechain conformation was analysed, and the total number of residues.

Mol	Chain	Analysed	Rotameric	Outliers	Percentiles	
1	A	426/432 (99%)	413 (97%)	13 (3%)	40	25

Continued on next page...

Continued from previous page...

Mol	Chain	Analysed	Rotameric	Outliers	Percentiles	
1	B	426/432 (99%)	412 (97%)	14 (3%)	38	23
1	C	427/432 (99%)	418 (98%)	9 (2%)	53	42
1	D	428/432 (99%)	415 (97%)	13 (3%)	41	27
All	All	1707/1728 (99%)	1658 (97%)	49 (3%)	43	29

All (49) residues with a non-rotameric sidechain are listed below:

Mol	Chain	Res	Type
1	A	74	GLU
1	A	110	ASP
1	A	114	PHE
1	A	120	THR
1	A	241	GLN
1	A	288	GLU
1	A	401	GLU
1	A	418	LYS
1	A	420	ASN
1	A	435	GLU
1	A	447	ASP
1	A	470	TYR
1	A	474	LEU
1	B	85	GLU
1	B	110	ASP
1	B	114	PHE
1	B	120	THR
1	B	219	ARG
1	B	241	GLN
1	B	292	LEU
1	B	401	GLU
1	B	418	LYS
1	B	420	ASN
1	B	440	LEU
1	B	447	ASP
1	B	470	TYR
1	B	474	LEU
1	C	110	ASP
1	C	114	PHE
1	C	225	ARG
1	C	241	GLN
1	C	401	GLU
1	C	409	ASP

Continued on next page...

Continued from previous page...

Mol	Chain	Res	Type
1	C	418	LYS
1	C	420	ASN
1	C	447	ASP
1	D	75[A]	LYS
1	D	75[B]	LYS
1	D	110	ASP
1	D	114	PHE
1	D	120	THR
1	D	234	GLU
1	D	241	GLN
1	D	273	GLU
1	D	401	GLU
1	D	418	LYS
1	D	447	ASP
1	D	470	TYR
1	D	474	LEU

Some sidechains can be flipped to improve hydrogen bonding and reduce clashes. All (23) such sidechains are listed below:

Mol	Chain	Res	Type
1	A	45	HIS
1	A	100	HIS
1	A	157	ASN
1	A	226	ASN
1	A	346	HIS
1	A	392	GLN
1	A	407	HIS
1	A	420	ASN
1	A	452	ASN
1	B	100	HIS
1	B	157	ASN
1	B	226	ASN
1	B	367	ASN
1	B	420	ASN
1	B	452	ASN
1	C	100	HIS
1	C	157	ASN
1	C	226	ASN
1	C	420	ASN
1	D	28	HIS
1	D	100	HIS
1	D	157	ASN

Continued on next page...

Continued from previous page...

Mol	Chain	Res	Type
1	D	226	ASN

5.3.3 RNA [i](#)

There are no RNA molecules in this entry.

5.4 Non-standard residues in protein, DNA, RNA chains [i](#)

There are no non-standard protein/DNA/RNA residues in this entry.

5.5 Carbohydrates [i](#)

There are no carbohydrates in this entry.

5.6 Ligand geometry [i](#)

Of 27 ligands modelled in this entry, 8 are monoatomic - leaving 19 for Mogul analysis.

In the following table, the Counts columns list the number of bonds (or angles) for which Mogul statistics could be retrieved, the number of bonds (or angles) that are observed in the model and the number of bonds (or angles) that are defined in the Chemical Component Dictionary. The Link column lists molecule types, if any, to which the group is linked. The Z score for a bond length (or angle) is the number of standard deviations the observed value is removed from the expected value. A bond length (or angle) with $|Z| > 2$ is considered an outlier worth inspection. RMSZ is the root-mean-square of all Z scores of the bond lengths (or angles).

Mol	Type	Chain	Res	Link	Bond lengths			Bond angles		
					Counts	RMSZ	$\# Z > 2$	Counts	RMSZ	$\# Z > 2$
2	HEM	B	501[A]	1	27,50,50	1.30	4 (14%)	17,82,82	1.73	6 (35%)
2	HEM	A	502[B]	1	27,50,50	1.30	3 (11%)	17,82,82	1.84	6 (35%)
3	CAQ	C	504	-	8,8,8	1.80	3 (37%)	10,10,10	1.98	3 (30%)
2	HEM	C	501[A]	1	27,50,50	1.40	4 (14%)	17,82,82	2.35	8 (47%)
2	HEM	B	502[B]	1	27,50,50	1.01	2 (7%)	17,82,82	2.68	6 (35%)
3	CAQ	C	505	-	8,8,8	2.06	1 (12%)	10,10,10	0.70	0
2	HEM	C	502[B]	1	27,50,50	1.34	4 (14%)	17,82,82	2.69	11 (64%)
3	CAQ	D	505	-	8,8,8	1.97	1 (12%)	10,10,10	0.73	0
2	HEM	A	501[A]	1	27,50,50	1.24	2 (7%)	17,82,82	1.84	6 (35%)
3	CAQ	B	505	-	8,8,8	1.97	1 (12%)	10,10,10	0.59	0

Mol	Type	Chain	Res	Link	Bond lengths			Bond angles		
					Counts	RMSZ	# Z > 2	Counts	RMSZ	# Z > 2
3	CAQ	B	504	-	8,8,8	1.56	1 (12%)	10,10,10	0.89	0
2	HEM	D	502[B]	1	27,50,50	1.18	2 (7%)	17,82,82	1.82	5 (29%)
3	CAQ	D	504	-	8,8,8	1.79	1 (12%)	10,10,10	1.07	1 (10%)
2	HEM	D	501[A]	1	27,50,50	1.08	2 (7%)	17,82,82	1.99	6 (35%)
3	CAQ	B	503	-	8,8,8	2.34	2 (25%)	10,10,10	1.36	1 (10%)
3	CAQ	A	503	-	8,8,8	2.05	1 (12%)	10,10,10	1.22	1 (10%)
3	CAQ	D	503	-	8,8,8	2.56	2 (25%)	10,10,10	1.44	1 (10%)
3	CAQ	C	503	-	8,8,8	1.61	1 (12%)	10,10,10	0.67	0
3	CAQ	A	504	-	8,8,8	1.66	1 (12%)	10,10,10	1.06	0

In the following table, the Chirals column lists the number of chiral outliers, the number of chiral centers analysed, the number of these observed in the model and the number defined in the Chemical Component Dictionary. Similar counts are reported in the Torsion and Rings columns. '-' means no outliers of that kind were identified.

Mol	Type	Chain	Res	Link	Chirals	Torsions	Rings
2	HEM	B	501[A]	1	-	0/6/54/54	-
2	HEM	A	502[B]	1	-	0/6/54/54	-
3	CAQ	C	504	-	-	-	0/1/1/1
2	HEM	C	501[A]	1	-	0/6/54/54	-
2	HEM	B	502[B]	1	-	0/6/54/54	-
2	HEM	A	501[A]	1	-	0/6/54/54	-
2	HEM	C	502[B]	1	-	0/6/54/54	-
3	CAQ	D	505	-	-	-	0/1/1/1
3	CAQ	C	505	-	-	-	0/1/1/1
3	CAQ	B	505	-	-	-	0/1/1/1
3	CAQ	B	504	-	-	-	0/1/1/1
2	HEM	D	502[B]	1	-	1/6/54/54	-
3	CAQ	D	504	-	-	-	0/1/1/1
2	HEM	D	501[A]	1	-	0/6/54/54	-
3	CAQ	B	503	-	-	-	0/1/1/1
3	CAQ	A	503	-	-	-	0/1/1/1
3	CAQ	D	503	-	-	-	0/1/1/1
3	CAQ	C	503	-	-	-	0/1/1/1
3	CAQ	A	504	-	-	-	0/1/1/1

All (38) bond length outliers are listed below:

Mol	Chain	Res	Type	Atoms	Z	Observed(Å)	Ideal(Å)
3	D	503	CAQ	C4-C3	6.00	1.49	1.40

Continued on next page...

Continued from previous page...

Mol	Chain	Res	Type	Atoms	Z	Observed(Å)	Ideal(Å)
3	B	503	CAQ	C4-C3	5.76	1.49	1.40
3	C	505	CAQ	C4-C3	5.60	1.49	1.40
3	A	503	CAQ	C4-C3	5.44	1.48	1.40
3	D	505	CAQ	C4-C3	5.42	1.48	1.40
3	B	505	CAQ	C4-C3	5.29	1.48	1.40
3	D	504	CAQ	C4-C3	4.83	1.47	1.40
2	A	501[A]	HEM	C3B-C2B	-4.37	1.34	1.40
3	C	503	CAQ	C4-C3	4.30	1.47	1.40
3	A	504	CAQ	C4-C3	4.27	1.47	1.40
2	C	501[A]	HEM	C3B-C2B	-4.07	1.34	1.40
3	B	504	CAQ	C4-C3	3.88	1.46	1.40
2	C	502[B]	HEM	C4D-C3D	3.70	1.50	1.42
2	D	502[B]	HEM	C4D-C3D	3.44	1.50	1.42
2	D	501[A]	HEM	C3B-C2B	-3.13	1.36	1.40
3	C	504	CAQ	O4-C4	3.07	1.42	1.36
2	A	502[B]	HEM	C3B-C2B	-3.00	1.36	1.40
3	C	504	CAQ	C4-C3	2.85	1.44	1.40
2	A	502[B]	HEM	C4A-NA	2.78	1.41	1.36
2	C	501[A]	HEM	C4A-NA	2.69	1.41	1.36
2	A	502[B]	HEM	C4D-C3D	2.66	1.48	1.42
2	C	502[B]	HEM	C1A-NA	2.65	1.41	1.36
2	C	501[A]	HEM	C4D-C3D	2.58	1.48	1.42
2	B	501[A]	HEM	C4D-C3D	2.52	1.48	1.42
2	C	501[A]	HEM	C3C-C2C	-2.50	1.36	1.40
2	B	501[A]	HEM	C3B-CAB	-2.41	1.43	1.47
2	B	502[B]	HEM	C1A-NA	2.40	1.41	1.36
2	B	501[A]	HEM	C3B-C2B	-2.34	1.37	1.40
2	B	502[B]	HEM	C4D-C3D	2.32	1.47	1.42
2	C	502[B]	HEM	C3B-C2B	-2.32	1.37	1.40
2	D	502[B]	HEM	C1A-NA	2.31	1.40	1.36
3	B	503	CAQ	C6-C1	2.29	1.44	1.38
2	B	501[A]	HEM	C4B-NB	-2.24	1.31	1.36
3	C	504	CAQ	O3-C3	-2.14	1.32	1.36
2	A	501[A]	HEM	C4D-C3D	2.13	1.47	1.42
2	C	502[B]	HEM	C3C-CAC	-2.11	1.43	1.47
2	D	501[A]	HEM	C4D-C3D	2.06	1.47	1.42
3	D	503	CAQ	O4-C4	2.05	1.40	1.36

All (61) bond angle outliers are listed below:

Mol	Chain	Res	Type	Atoms	Z	Observed(°)	Ideal(°)
2	B	502[B]	HEM	C4A-C3A-C2A	6.16	111.28	107.00

Continued on next page...

Continued from previous page...

Mol	Chain	Res	Type	Atoms	Z	Observed(°)	Ideal(°)
2	B	502[B]	HEM	CBD-CAD-C3D	-5.44	102.46	112.48
2	C	501[A]	HEM	C4C-C3C-C2C	5.31	110.61	106.90
2	C	502[B]	HEM	C4C-C3C-C2C	5.08	110.45	106.90
3	C	504	CAQ	C5-C4-C3	-4.11	115.16	119.67
2	C	501[A]	HEM	CBA-CAA-C2A	-4.07	104.97	112.49
2	A	502[B]	HEM	CBD-CAD-C3D	-4.03	105.05	112.48
2	B	502[B]	HEM	CAD-CBD-CGD	3.67	118.83	112.67
2	A	501[A]	HEM	C4C-C3C-C2C	3.63	109.43	106.90
2	D	501[A]	HEM	CAD-CBD-CGD	-3.57	106.68	112.67
2	C	502[B]	HEM	CMA-C3A-C2A	-3.56	118.22	124.94
2	C	501[A]	HEM	CMA-C3A-C4A	-3.55	123.01	128.46
2	A	501[A]	HEM	CAD-CBD-CGD	-3.50	106.80	112.67
2	D	501[A]	HEM	C1D-C2D-C3D	-3.45	104.60	107.00
2	C	502[B]	HEM	CMD-C2D-C1D	-3.44	123.18	128.46
2	B	501[A]	HEM	C3B-C4B-NB	-3.41	104.80	109.21
2	B	502[B]	HEM	CMC-C2C-C3C	3.38	130.99	124.68
2	D	502[B]	HEM	CAD-CBD-CGD	3.29	118.19	112.67
2	C	502[B]	HEM	C3B-C4B-NB	-3.25	105.01	109.21
2	C	502[B]	HEM	CMA-C3A-C4A	3.23	133.44	128.46
2	C	501[A]	HEM	CMB-C2B-C3B	-3.17	118.74	124.68
3	D	503	CAQ	C5-C4-C3	-3.16	116.20	119.67
2	A	502[B]	HEM	C3C-C4C-NC	-3.07	105.15	110.94
2	C	502[B]	HEM	CAD-CBD-CGD	3.01	117.71	112.67
2	A	502[B]	HEM	CMC-C2C-C3C	2.93	130.16	124.68
3	C	504	CAQ	C2-C3-C4	2.92	122.87	119.67
2	D	501[A]	HEM	CMA-C3A-C4A	-2.91	124.00	128.46
2	C	502[B]	HEM	CMC-C2C-C3C	2.87	130.04	124.68
2	A	501[A]	HEM	C3C-C4C-NC	-2.84	105.59	110.94
2	D	502[B]	HEM	CMD-C2D-C1D	-2.80	124.16	128.46
2	D	502[B]	HEM	CMB-C2B-C3B	2.79	129.91	124.68
2	C	502[B]	HEM	C3C-C4C-NC	-2.79	105.68	110.94
2	D	501[A]	HEM	CBA-CAA-C2A	-2.78	107.36	112.49
2	C	502[B]	HEM	CMD-C2D-C3D	2.71	130.06	124.94
2	B	502[B]	HEM	C3C-C4C-NC	-2.68	105.89	110.94
3	C	504	CAQ	O4-C4-C5	2.67	126.58	119.33
2	A	502[B]	HEM	CAD-CBD-CGD	2.61	117.05	112.67
2	B	501[A]	HEM	C1D-C2D-C3D	2.60	108.80	107.00
2	C	501[A]	HEM	C1D-C2D-C3D	-2.55	105.22	107.00
2	B	501[A]	HEM	C3C-C4C-NC	-2.52	106.18	110.94
2	C	502[B]	HEM	CBD-CAD-C3D	-2.49	107.88	112.48
2	D	501[A]	HEM	CMD-C2D-C3D	2.48	129.62	124.94
2	C	501[A]	HEM	CMA-C3A-C2A	2.48	129.62	124.94

Continued on next page...

Continued from previous page...

Mol	Chain	Res	Type	Atoms	Z	Observed(°)	Ideal(°)
2	C	502[B]	HEM	CMB-C2B-C3B	2.40	129.16	124.68
3	A	503	CAQ	C6-C5-C4	-2.37	117.06	120.05
2	D	502[B]	HEM	CAA-CBA-CGA	2.31	116.55	112.67
2	A	501[A]	HEM	CMD-C2D-C1D	-2.30	124.93	128.46
3	B	503	CAQ	C6-C5-C4	-2.30	117.14	120.05
2	A	501[A]	HEM	CBA-CAA-C2A	-2.30	108.25	112.49
2	B	501[A]	HEM	C4C-C3C-C2C	2.27	108.48	106.90
2	A	502[B]	HEM	C4C-C3C-C2C	2.25	108.47	106.90
2	C	501[A]	HEM	CAD-CBD-CGD	-2.25	108.90	112.67
2	A	502[B]	HEM	CAA-CBA-CGA	-2.23	108.93	112.67
3	D	504	CAQ	C2-C3-C4	-2.21	117.24	119.67
2	D	502[B]	HEM	C3B-C4B-NB	-2.20	106.36	109.21
2	B	501[A]	HEM	CMD-C2D-C3D	-2.14	120.91	124.94
2	B	502[B]	HEM	CMB-C2B-C3B	2.13	128.67	124.68
2	A	501[A]	HEM	CMD-C2D-C3D	2.13	128.95	124.94
2	B	501[A]	HEM	CMA-C3A-C4A	-2.08	125.27	128.46
2	C	501[A]	HEM	C3C-C4C-NC	-2.05	107.08	110.94
2	D	501[A]	HEM	CMA-C3A-C2A	2.03	128.76	124.94

There are no chirality outliers.

All (1) torsion outliers are listed below:

Mol	Chain	Res	Type	Atoms
2	D	502[B]	HEM	C2D-C3D-CAD-CBD

There are no ring outliers.

13 monomers are involved in 57 short contacts:

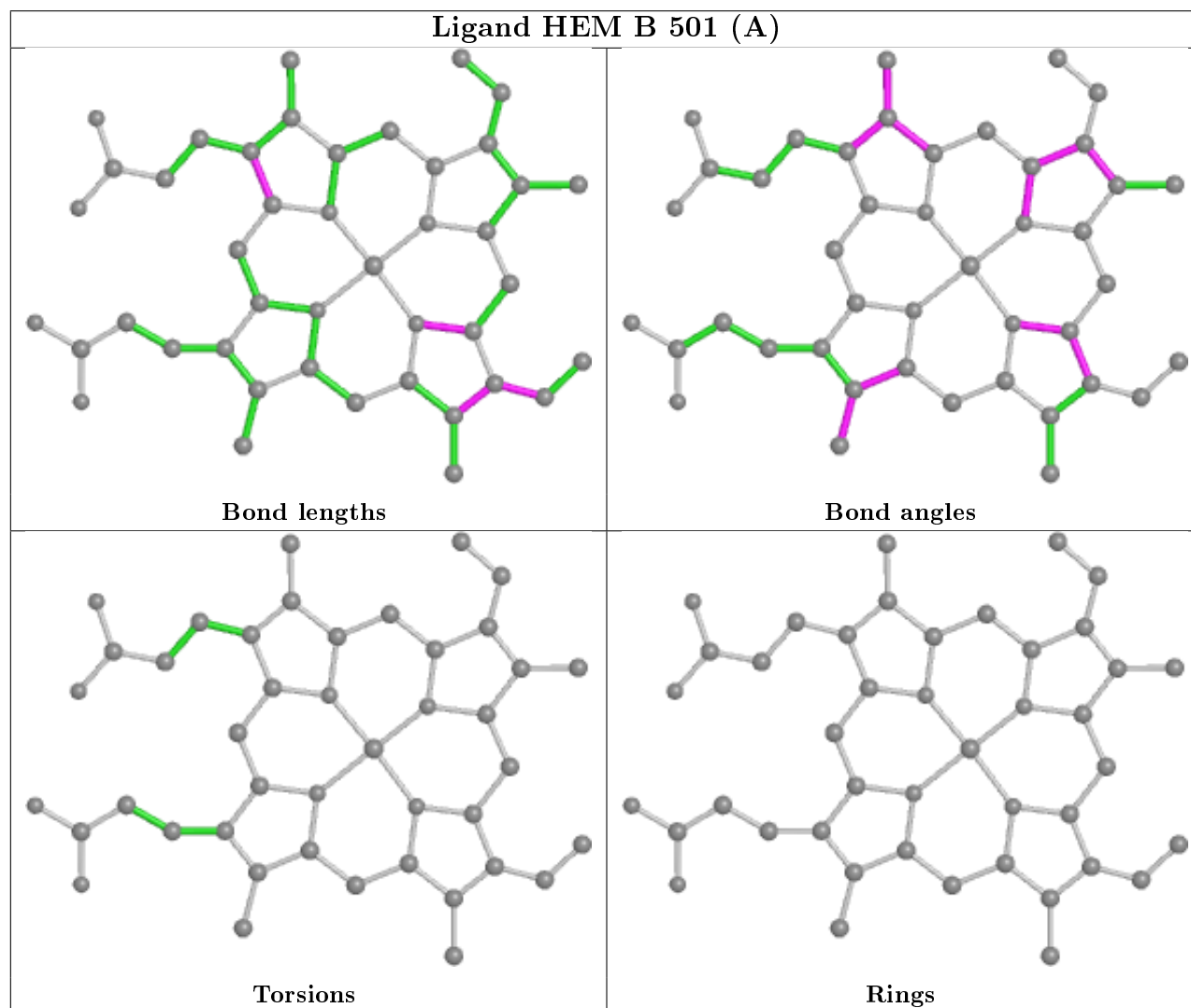
Mol	Chain	Res	Type	Clashes	Symm-Clashes
2	B	501[A]	HEM	7	0
2	A	502[B]	HEM	6	0
2	C	501[A]	HEM	9	0
2	B	502[B]	HEM	2	0
2	C	502[B]	HEM	5	0
2	A	501[A]	HEM	8	0
3	B	504	CAQ	1	0
2	D	502[B]	HEM	3	0
3	D	504	CAQ	4	0
2	D	501[A]	HEM	8	0
3	B	503	CAQ	1	0
3	D	503	CAQ	2	0

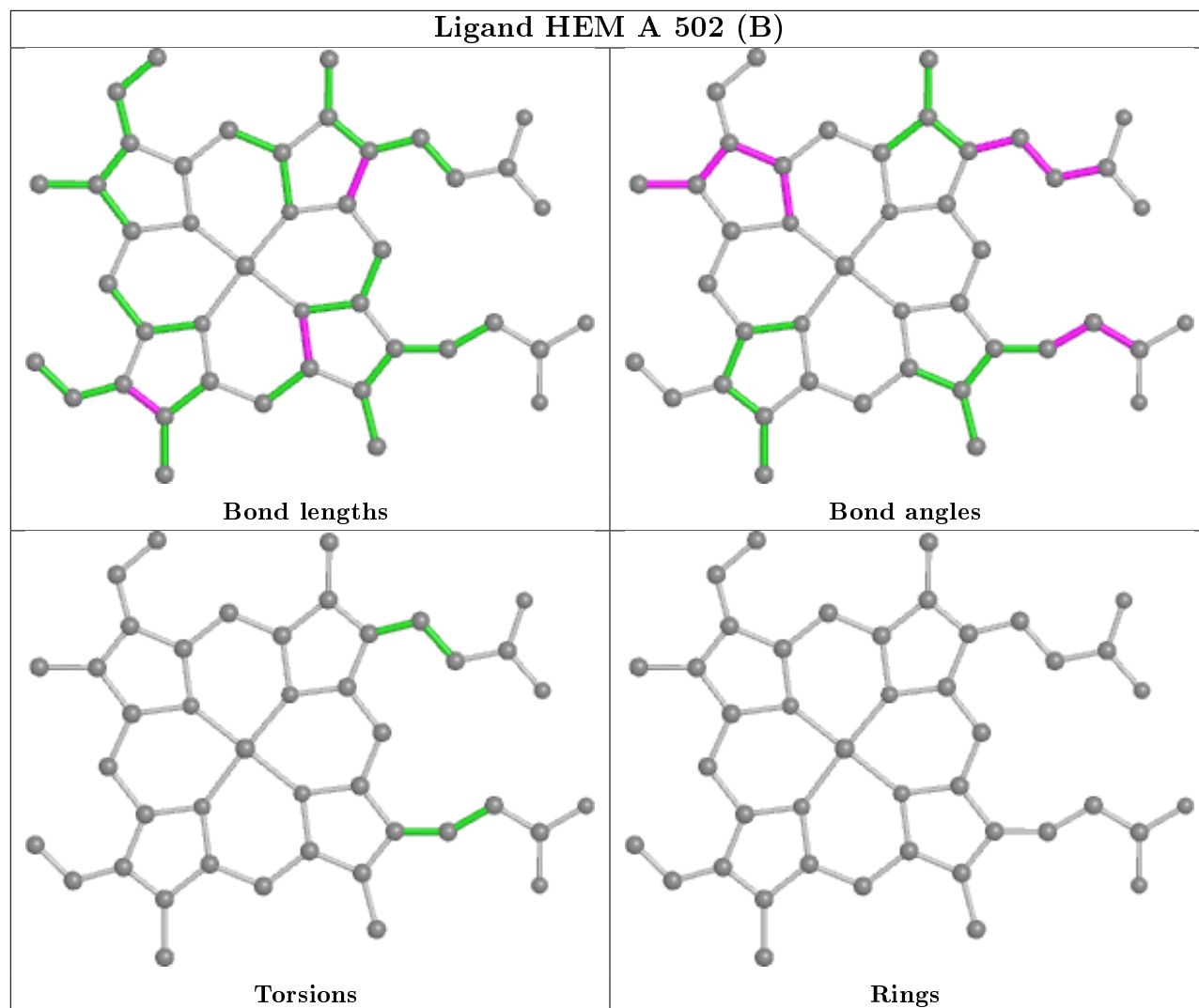
Continued on next page...

Continued from previous page...

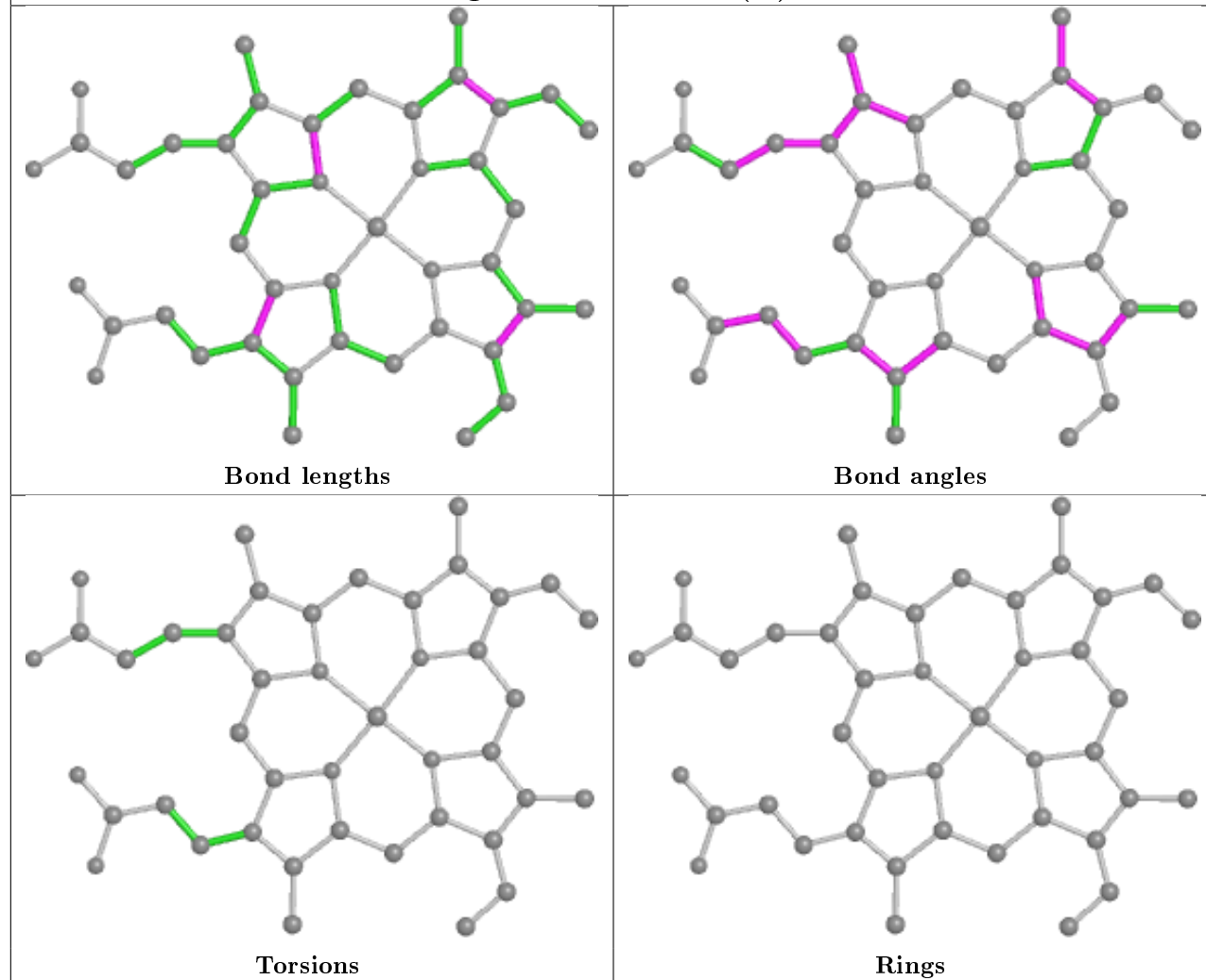
Mol	Chain	Res	Type	Clashes	Symm-Clashes
3	C	503	CAQ	1	0

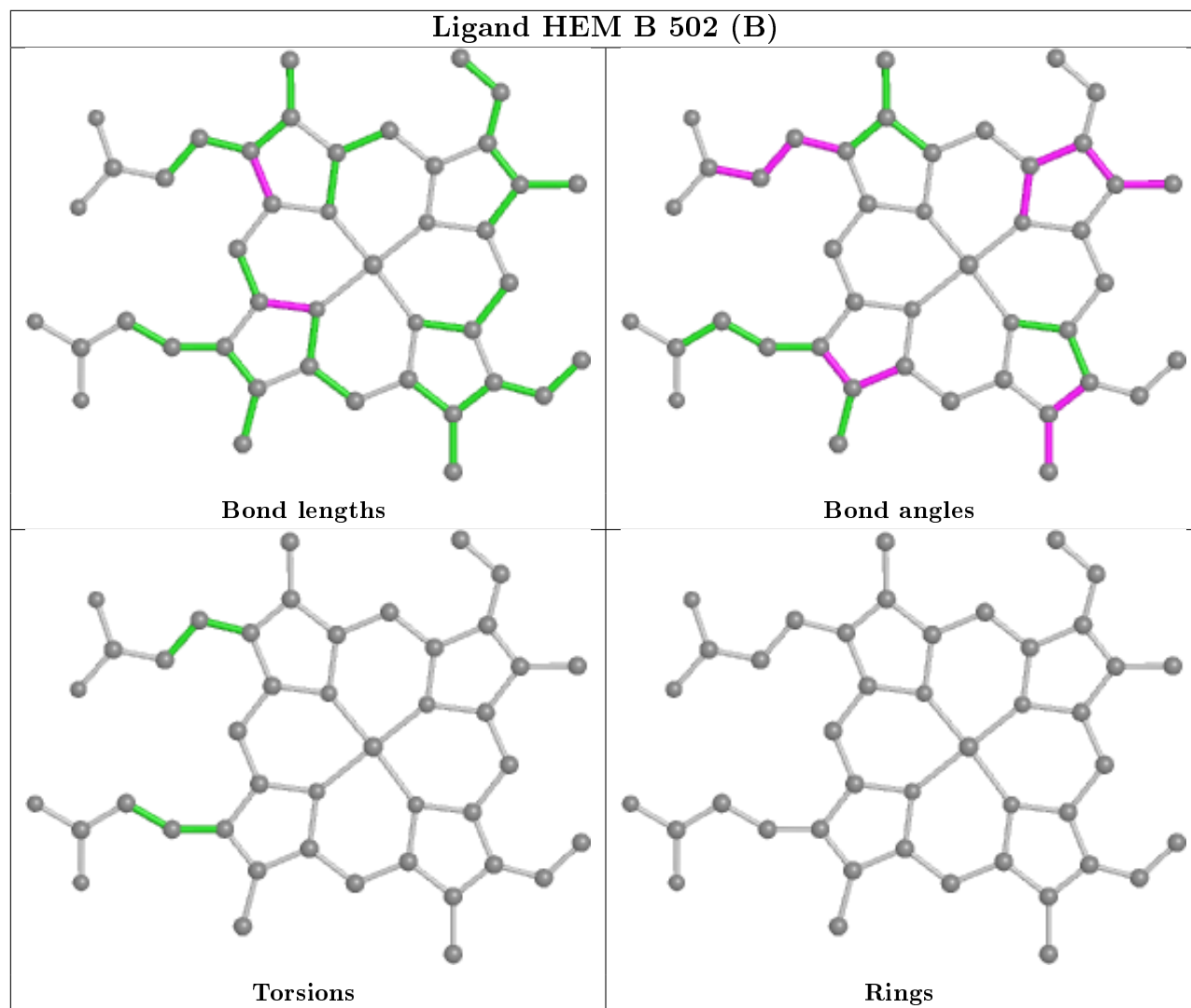
The following is a two-dimensional graphical depiction of Mogul quality analysis of bond lengths, bond angles, torsion angles, and ring geometry for all instances of the Ligand of Interest. In addition, ligands with molecular weight > 250 and outliers as shown on the validation Tables will also be included. For torsion angles, if less than 5% of the Mogul distribution of torsion angles is within 10 degrees of the torsion angle in question, then that torsion angle is considered an outlier. Any bond that is central to one or more torsion angles identified as an outlier by Mogul will be highlighted in the graph. For rings, the root-mean-square deviation (RMSD) between the ring in question and similar rings identified by Mogul is calculated over all ring torsion angles. If the average RMSD is greater than 60 degrees and the minimal RMSD between the ring in question and any Mogul-identified rings is also greater than 60 degrees, then that ring is considered an outlier. The outliers are highlighted in purple. The color gray indicates Mogul did not find sufficient equivalents in the CSD to analyse the geometry.



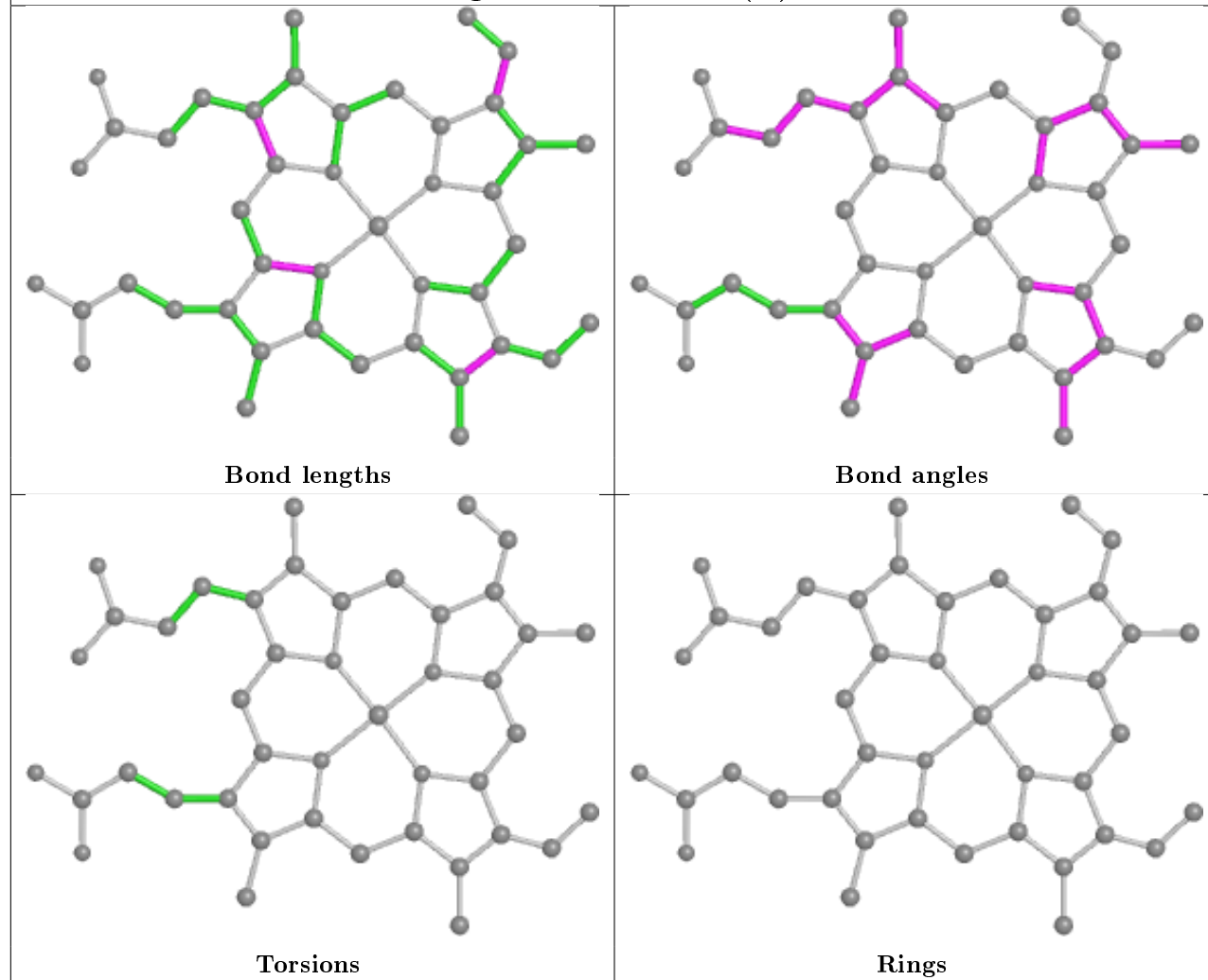


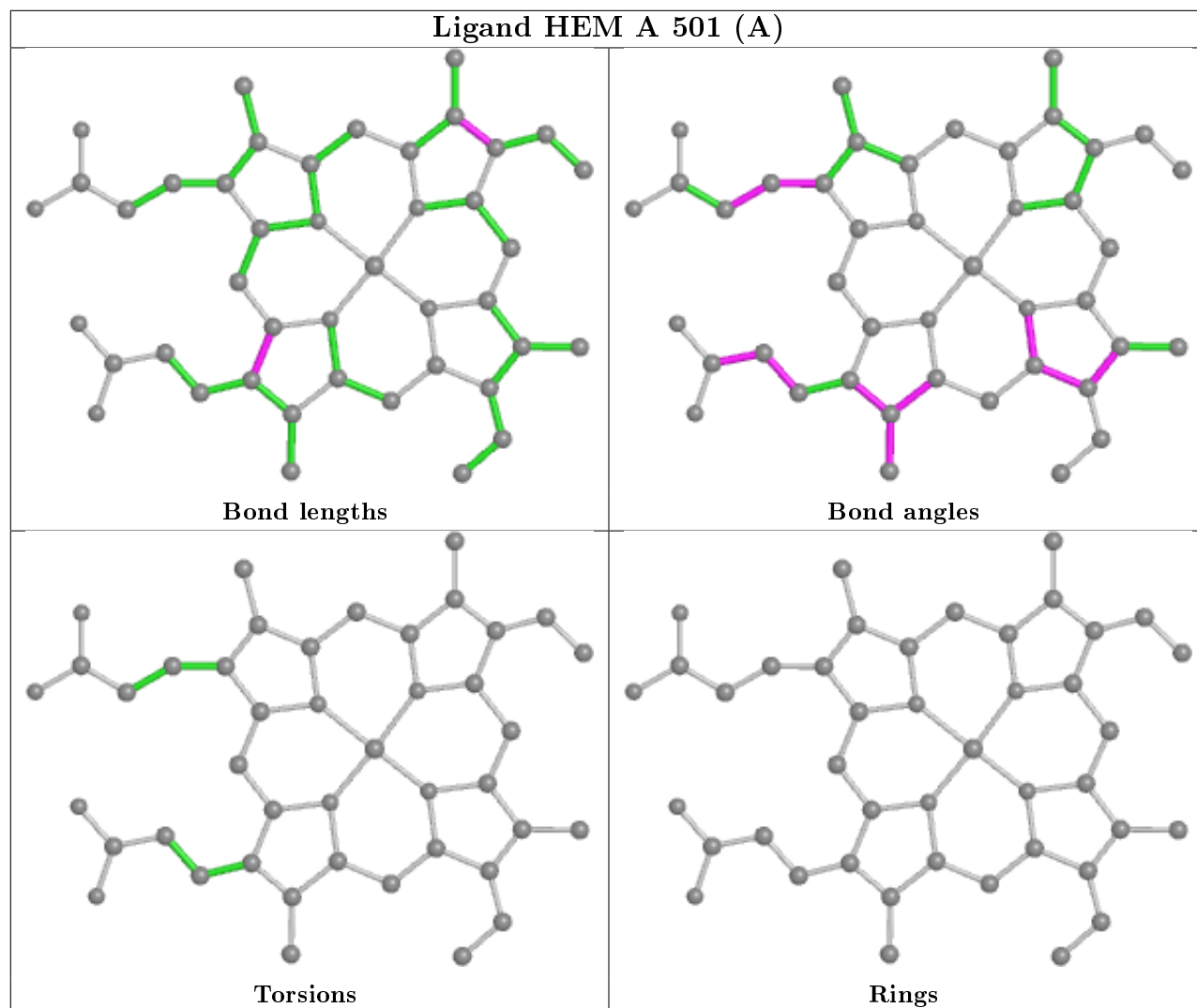
Ligand HEM C 501 (A)

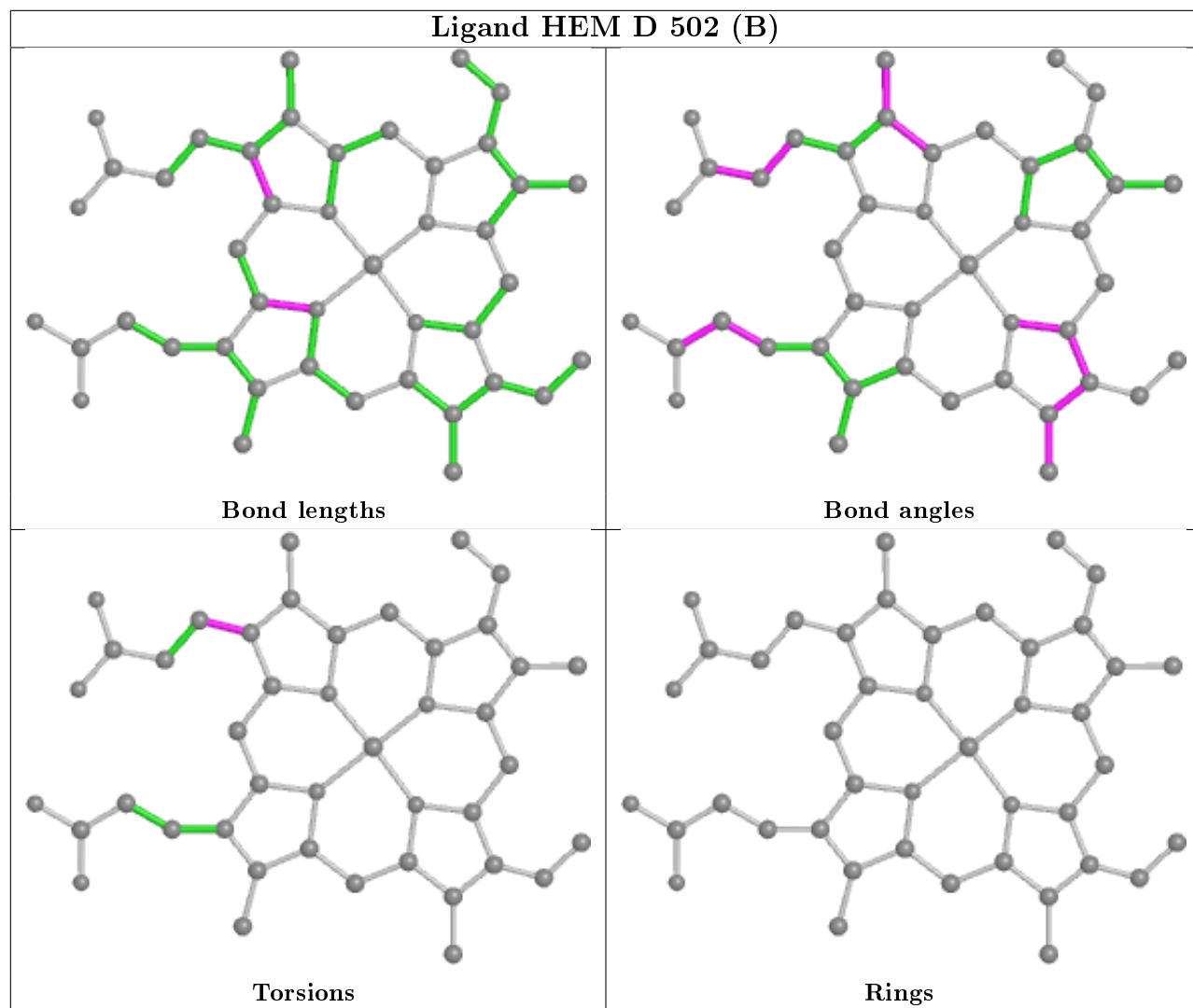


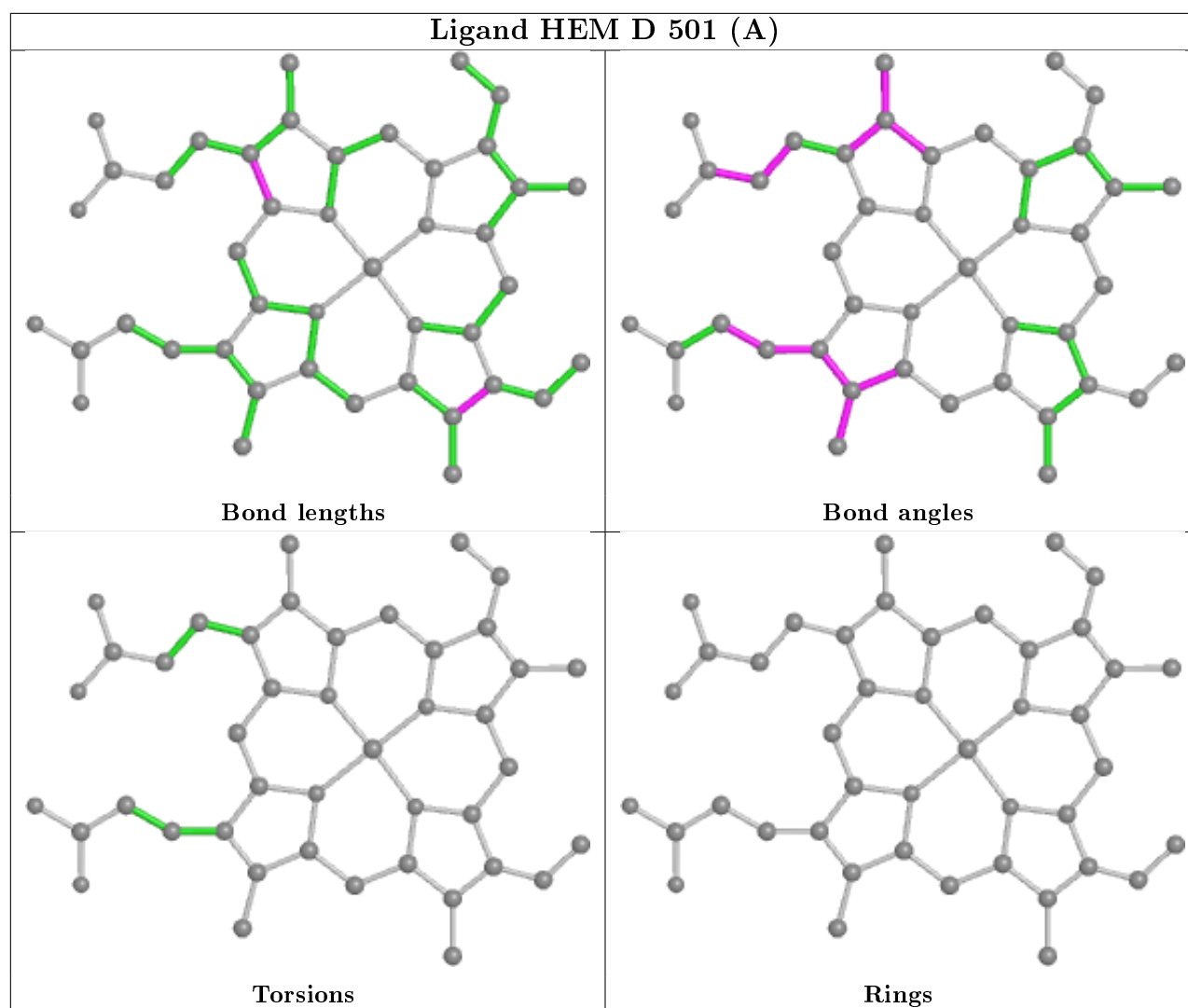


Ligand HEM C 502 (B)









5.7 Other polymers [i](#)

There are no such residues in this entry.

5.8 Polymer linkage issues [i](#)

There are no chain breaks in this entry.

6 Fit of model and data ⓘ

6.1 Protein, DNA and RNA chains ⓘ

In the following table, the column labelled ‘#RSRZ> 2’ contains the number (and percentage) of RSRZ outliers, followed by percent RSRZ outliers for the chain as percentile scores relative to all X-ray entries and entries of similar resolution. The OWAB column contains the minimum, median, 95th percentile and maximum values of the occupancy-weighted average B-factor per residue. The column labelled ‘Q< 0.9’ lists the number of (and percentage) of residues with an average occupancy less than 0.9.

Mol	Chain	Analysed	<RSRZ>	#RSRZ>2	OWAB(Å ²)	Q<0.9
1	A	480/491 (97%)	0.25	15 (3%) 49 43	12, 24, 41, 87	1 (0%)
1	B	480/491 (97%)	0.00	3 (0%) 89 87	11, 19, 32, 65	0
1	C	480/491 (97%)	0.04	5 (1%) 82 80	11, 17, 31, 61	0
1	D	480/491 (97%)	0.21	8 (1%) 70 66	12, 22, 38, 68	0
All	All	1920/1964 (97%)	0.13	31 (1%) 72 68	11, 20, 37, 87	1 (0%)

All (31) RSRZ outliers are listed below:

Mol	Chain	Res	Type	RSRZ
1	A	485	TYR	7.8
1	D	483	ARG	4.0
1	A	480	VAL	3.7
1	D	372[A]	PHE	3.5
1	C	372[A]	PHE	3.5
1	B	372[A]	PHE	3.5
1	A	288	GLU	3.4
1	A	484	SER	3.3
1	B	6	HIS	3.3
1	A	253	LYS	3.3
1	A	235	ILE	3.2
1	D	485	TYR	3.2
1	D	484	SER	3.2
1	C	6	HIS	3.1
1	A	482	ILE	3.0
1	A	461	CYS	2.8
1	A	464	TYR	2.8
1	A	479	GLY	2.8
1	D	480	VAL	2.7
1	D	398	HIS	2.7
1	C	485	TYR	2.6

Continued on next page...

Continued from previous page...

Mol	Chain	Res	Type	RSRZ
1	C	484	SER	2.6
1	A	483	ARG	2.5
1	C	407	HIS	2.5
1	D	6	HIS	2.5
1	A	372[A]	PHE	2.4
1	A	478	LEU	2.4
1	A	429	TYR	2.3
1	A	398	HIS	2.2
1	D	479	GLY	2.2
1	B	485	TYR	2.1

6.2 Non-standard residues in protein, DNA, RNA chains [i](#)

There are no non-standard protein/DNA/RNA residues in this entry.

6.3 Carbohydrates [i](#)

There are no carbohydrates in this entry.

6.4 Ligands [i](#)

In the following table, the Atoms column lists the number of modelled atoms in the group and the number defined in the chemical component dictionary. The B-factors column lists the minimum, median, 95th percentile and maximum values of B factors of atoms in the group. The column labelled 'Q< 0.9' lists the number of atoms with occupancy less than 0.9.

Mol	Type	Chain	Res	Atoms	RSCC	RSR	B-factors(Å ²)	Q<0.9
3	CAQ	C	505	8/8	0.68	0.28	41,45,47,47	0
3	CAQ	A	504	8/8	0.78	0.21	41,42,43,43	0
3	CAQ	B	505	8/8	0.83	0.21	38,39,41,45	0
3	CAQ	C	503	8/8	0.83	0.17	32,33,36,37	0
3	CAQ	B	504	8/8	0.84	0.19	31,32,33,38	0
3	CAQ	D	504	8/8	0.84	0.18	40,43,46,47	0
3	CAQ	D	503	8/8	0.84	0.17	24,28,30,30	0
3	CAQ	B	503	8/8	0.85	0.13	20,22,24,27	0
3	CAQ	D	505	8/8	0.86	0.25	42,45,46,46	0
3	CAQ	A	503	8/8	0.90	0.14	25,27,28,28	0
3	CAQ	C	504	8/8	0.91	0.15	21,25,26,29	0
2	HEM	B	502[B]	43/43	0.95	0.13	9,10,11,11	43
2	HEM	B	501[A]	43/43	0.95	0.13	12,13,14,16	43

Continued on next page...

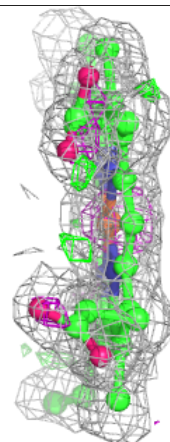
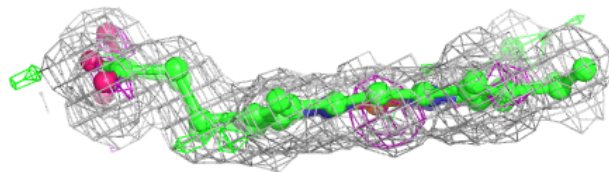
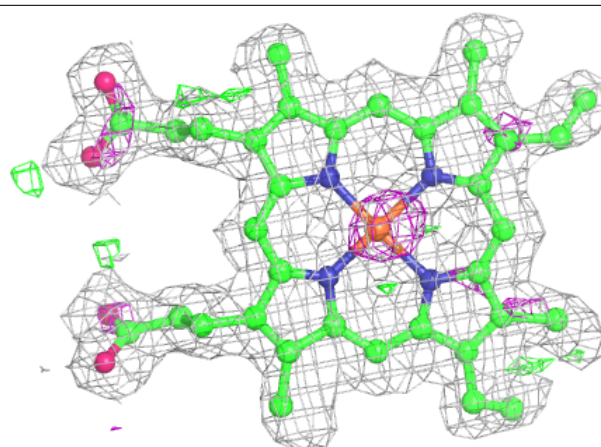
Continued from previous page...

Mol	Type	Chain	Res	Atoms	RSCC	RSR	B-factors(\AA^2)	Q<0.9
2	HEM	D	501[A]	43/43	0.95	0.13	15,18,20,23	43
2	HEM	D	502[B]	43/43	0.95	0.12	11,12,13,13	43
2	HEM	A	502[B]	43/43	0.96	0.13	14,17,19,21	43
2	HEM	A	501[A]	43/43	0.96	0.12	11,14,15,16	43
5	NA	B	507	1/1	0.96	0.09	20,20,20,20	0
5	NA	A	507	1/1	0.97	0.06	10,10,10,10	0
2	HEM	C	501[A]	43/43	0.97	0.10	10,12,12,13	43
2	HEM	C	502[B]	43/43	0.97	0.11	10,10,11,11	43
4	CL	C	506	1/1	0.99	0.10	24,24,24,24	0
4	CL	B	506	1/1	0.99	0.08	19,19,19,19	0
4	CL	D	506	1/1	0.99	0.06	18,18,18,18	0
4	CL	A	506	1/1	0.99	0.08	18,18,18,18	0
4	CL	A	505	1/1	0.99	0.14	22,22,22,22	0
4	CL	C	507	1/1	1.00	0.03	19,19,19,19	0

The following is a graphical depiction of the model fit to experimental electron density of all instances of the Ligand of Interest. In addition, ligands with molecular weight > 250 and outliers as shown on the geometry validation Tables will also be included. Each fit is shown from different orientation to approximate a three-dimensional view.

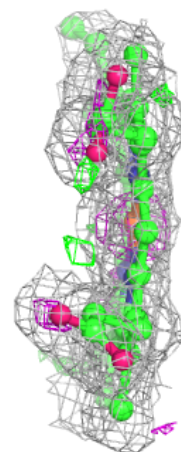
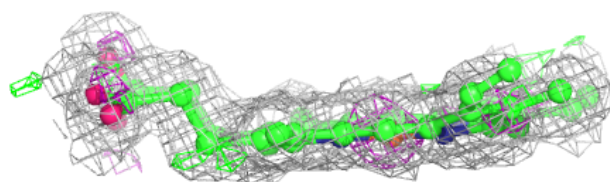
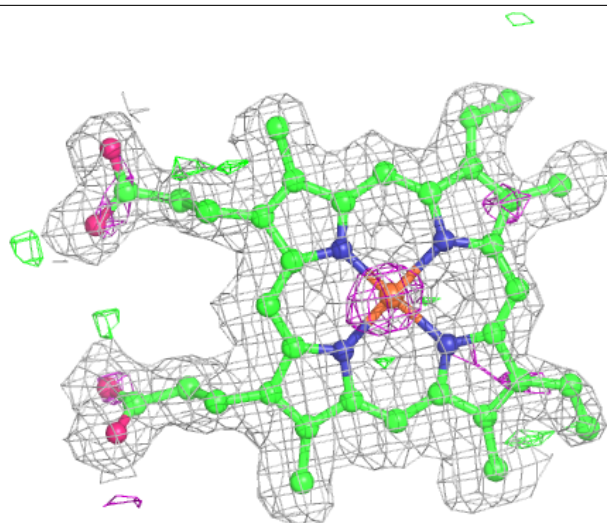
Electron density around HEM B 502 (B):

2mF_o-DF_c (at 0.7 rmsd) in gray
mF_o-DF_c (at 3 rmsd) in purple (negative)
and green (positive)



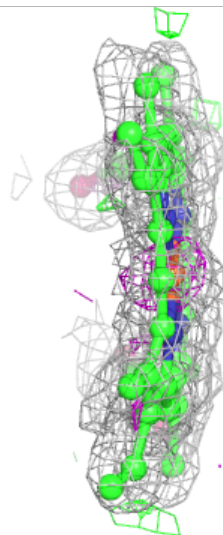
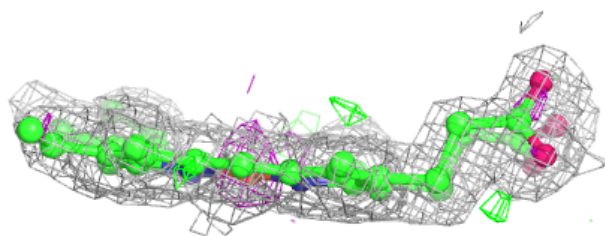
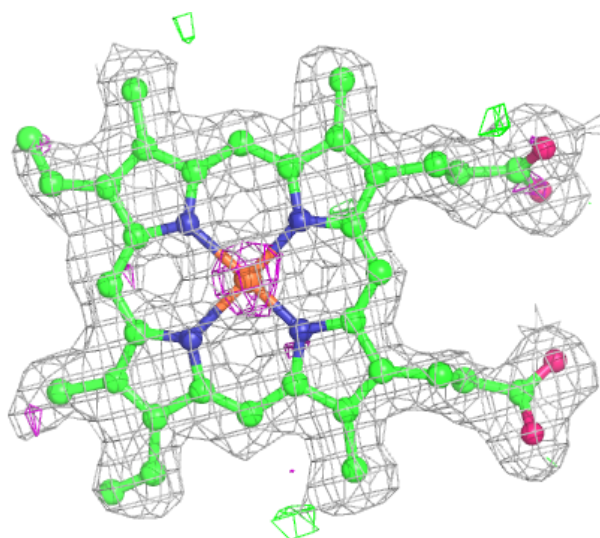
Electron density around HEM B 501 (A):

$2mF_o-DF_c$ (at 0.7 rmsd) in gray
 mF_o-DF_c (at 3 rmsd) in purple (negative)
and green (positive)



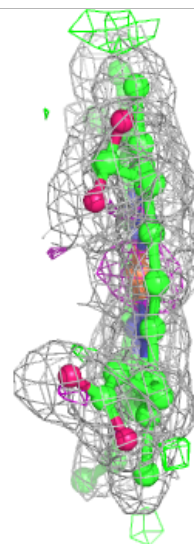
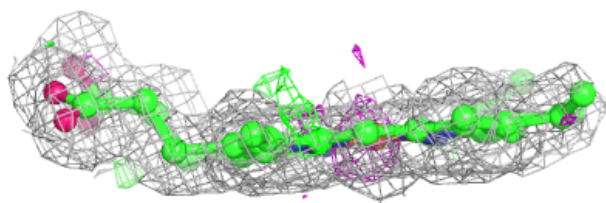
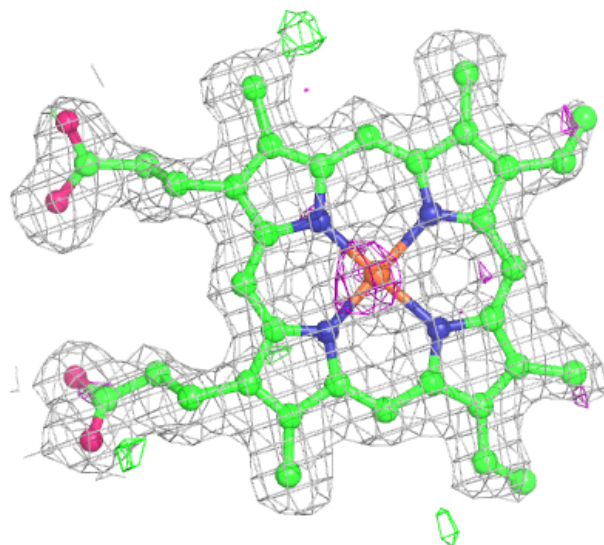
Electron density around HEM D 501 (A):

$2mF_o-DF_c$ (at 0.7 rmsd) in gray
 mF_o-DF_c (at 3 rmsd) in purple (negative)
and green (positive)



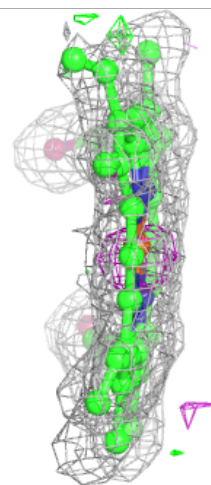
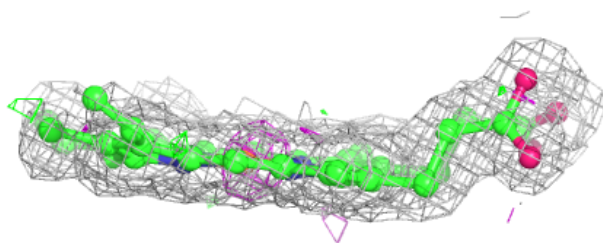
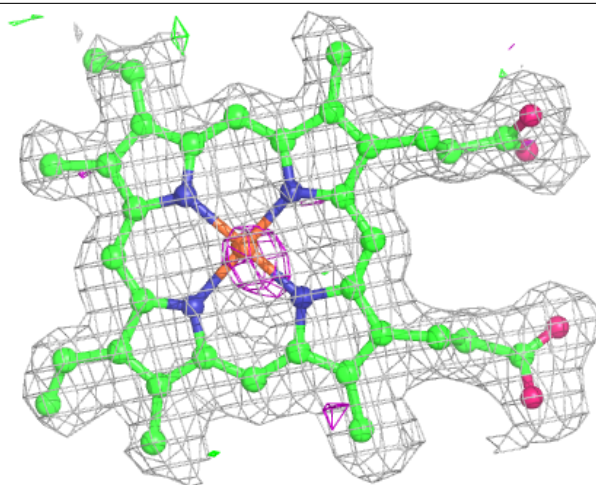
Electron density around HEM D 502 (B):

$2mF_o-DF_c$ (at 0.7 rmsd) in gray
 mF_o-DF_c (at 3 rmsd) in purple (negative)
and green (positive)



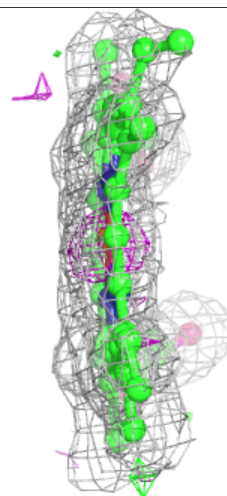
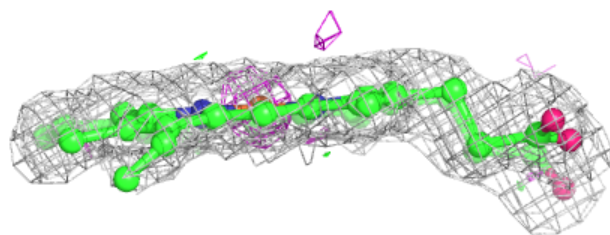
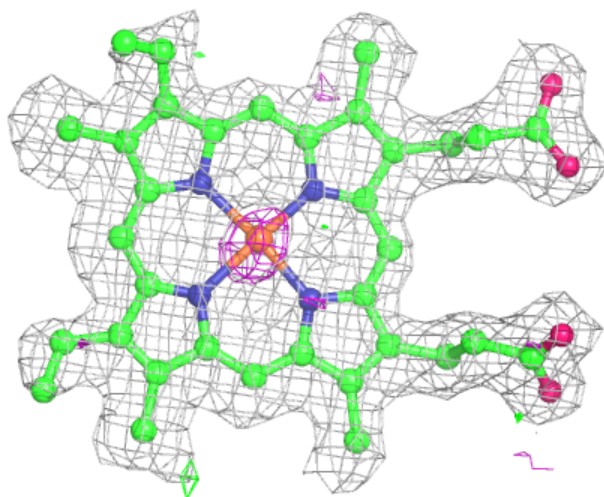
Electron density around HEM A 502 (B):

$2mF_o-DF_c$ (at 0.7 rmsd) in gray
 mF_o-DF_c (at 3 rmsd) in purple (negative)
and green (positive)



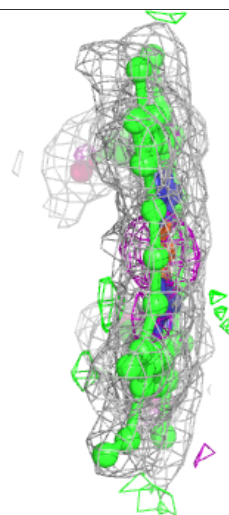
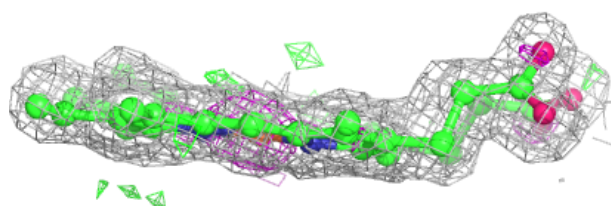
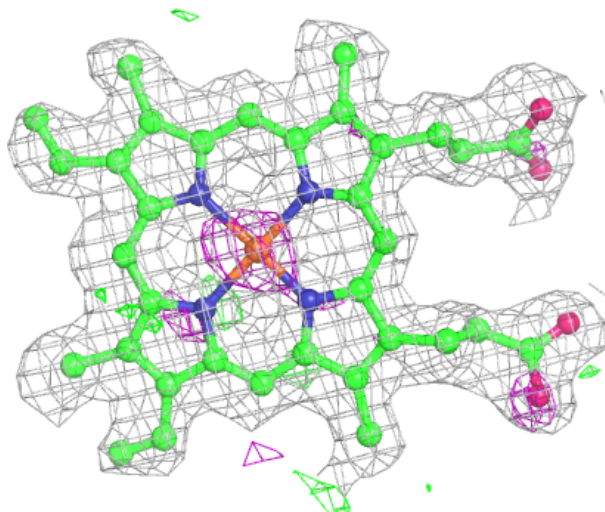
Electron density around HEM A 501 (A):

$2mF_o-DF_c$ (at 0.7 rmsd) in gray
 mF_o-DF_c (at 3 rmsd) in purple (negative)
and green (positive)



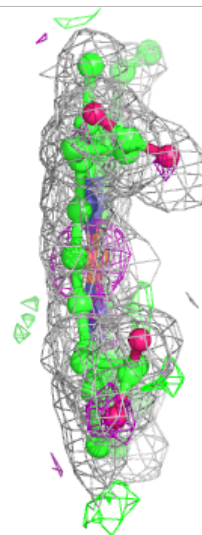
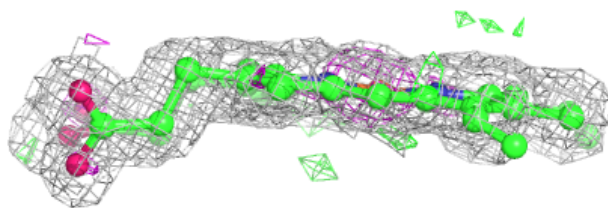
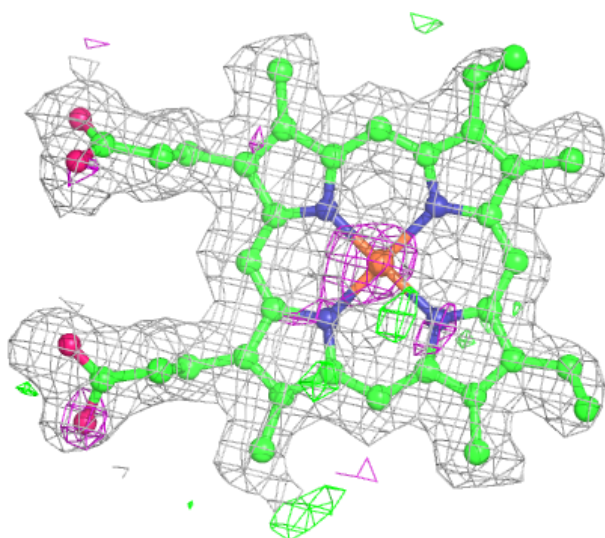
Electron density around HEM C 501 (A):

$2mF_o-DF_c$ (at 0.7 rmsd) in gray
 mF_o-DF_c (at 3 rmsd) in purple (negative)
and green (positive)



Electron density around HEM C 502 (B):

$2mF_o-DF_c$ (at 0.7 rmsd) in gray
 mF_o-DF_c (at 3 rmsd) in purple (negative)
and green (positive)



6.5 Other polymers [i](#)

There are no such residues in this entry.