



Full wwPDB X-ray Structure Validation Report ⓘ

May 18, 2020 – 08:59 am BST

PDB ID : 4QS6
Title : CRYSTAL STRUCTURE of 5-CARBOXYVANILLATE DECARBOXYLASE
LIGW2 FROM NOVOSPHINGOBIUM AROMATICIVORANS DSM 12444
(TARGET EFI-505250) WITH BOUND 4-HYDROXY-3-METHOXY-5-NIT
ROBENZOIC ACID, NO METAL, THE D314N MUTANT
Authors : Patskovsky, Y.; Vladimirova, A.; Toro, R.; Bhosle, R.; Gerlt, J.A.; Raushel,
F.M.; Almo, S.C.
Deposited on : 2014-07-03
Resolution : 1.76 Å(reported)

This is a Full wwPDB X-ray Structure Validation Report for a publicly released PDB entry.

We welcome your comments at validation@mail.wwpdb.org

A user guide is available at

<https://www.wwpdb.org/validation/2017/XrayValidationReportHelp>

with specific help available everywhere you see the ⓘ symbol.

The following versions of software and data (see [references ⓘ](#)) were used in the production of this report:

MolProbity : 4.02b-467
Mogul : 1.8.5 (274361), CSD as541be (2020)
Xtriage (Phenix) : 1.13
EDS : 2.11
Percentile statistics : 20191225.v01 (using entries in the PDB archive December 25th 2019)
Refmac : 5.8.0158
CCP4 : 7.0.044 (Gargrove)
Ideal geometry (proteins) : Engh & Huber (2001)
Ideal geometry (DNA, RNA) : Parkinson et al. (1996)
Validation Pipeline (wwPDB-VP) : 2.11

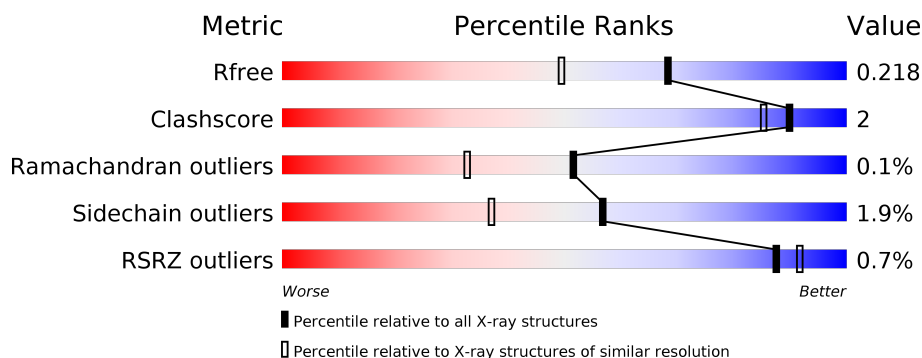
1 Overall quality at a glance

The following experimental techniques were used to determine the structure:

X-RAY DIFFRACTION

The reported resolution of this entry is 1.76 Å.

Percentile scores (ranging between 0-100) for global validation metrics of the entry are shown in the following graphic. The table shows the number of entries on which the scores are based.



Metric	Whole archive (#Entries)	Similar resolution (#Entries, resolution range(Å))
R_{free}	130704	2340 (1.76-1.76)
Clashscore	141614	2466 (1.76-1.76)
Ramachandran outliers	138981	2437 (1.76-1.76)
Sidechain outliers	138945	2437 (1.76-1.76)
RSRZ outliers	127900	2298 (1.76-1.76)

The table below summarises the geometric issues observed across the polymeric chains and their fit to the electron density. The red, orange, yellow and green segments on the lower bar indicate the fraction of residues that contain outliers for ≥ 3 , 2, 1 and 0 types of geometric quality criteria respectively. A grey segment represents the fraction of residues that are not modelled. The numeric value for each fraction is indicated below the corresponding segment, with a dot representing fractions $\leq 5\%$. The upper red bar (where present) indicates the fraction of residues that have poor fit to the electron density. The numeric value is given above the bar.

Mol	Chain	Length	Quality of chain
1	A	373	<div> <div style="width: 100%; height: 10px; background: linear-gradient(to right, red 1%, orange 1%, yellow 1%, green 98%);"></div> <div style="display: flex; justify-content: space-between; margin-top: 5px;"> % 90% • • 6% </div> </div>
1	B	373	<div> <div style="width: 100%; height: 10px; background: linear-gradient(to right, red 1%, orange 1%, yellow 1%, green 98%);"></div> <div style="display: flex; justify-content: space-between; margin-top: 5px;"> % 88% 5% • 6% </div> </div>

2 Entry composition

There are 5 unique types of molecules in this entry. The entry contains 6435 atoms, of which 0 are hydrogens and 0 are deuteriums.

In the tables below, the ZeroOcc column contains the number of atoms modelled with zero occupancy, the AltConf column contains the number of residues with at least one atom in alternate conformation and the Trace column contains the number of residues modelled with at most 2 atoms.

- Molecule 1 is a protein called Ligw2 Decarboxylase.

Mol	Chain	Residues	Atoms					ZeroOcc	AltConf	Trace
1	A	349	Total	C	N	O	S	0	4	0
			2807	1783	481	524	19			
1	B	349	Total	C	N	O	S	0	6	0
			2821	1796	484	522	19			

There are 46 discrepancies between the modelled and reference sequences:

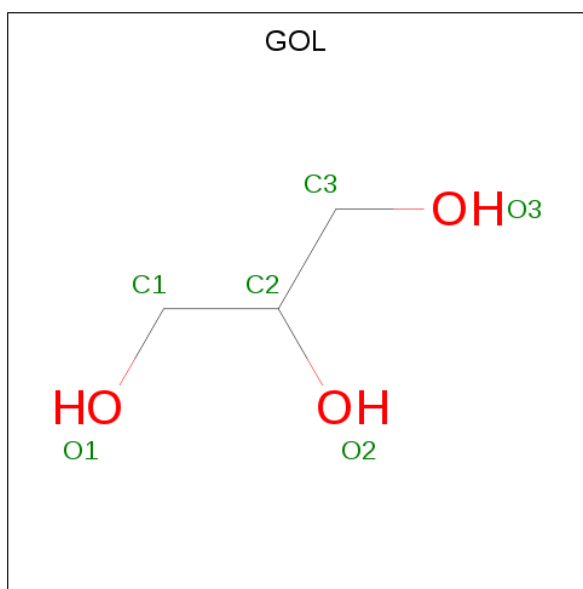
Chain	Residue	Modelled	Actual	Comment	Reference
A	-21	MET	-	EXPRESSION TAG	UNP Q2GA79
A	-20	HIS	-	EXPRESSION TAG	UNP Q2GA79
A	-19	HIS	-	EXPRESSION TAG	UNP Q2GA79
A	-18	HIS	-	EXPRESSION TAG	UNP Q2GA79
A	-17	HIS	-	EXPRESSION TAG	UNP Q2GA79
A	-16	HIS	-	EXPRESSION TAG	UNP Q2GA79
A	-15	HIS	-	EXPRESSION TAG	UNP Q2GA79
A	-14	SER	-	EXPRESSION TAG	UNP Q2GA79
A	-13	SER	-	EXPRESSION TAG	UNP Q2GA79
A	-12	GLY	-	EXPRESSION TAG	UNP Q2GA79
A	-11	VAL	-	EXPRESSION TAG	UNP Q2GA79
A	-10	ASP	-	EXPRESSION TAG	UNP Q2GA79
A	-9	LEU	-	EXPRESSION TAG	UNP Q2GA79
A	-8	GLY	-	EXPRESSION TAG	UNP Q2GA79
A	-7	THR	-	EXPRESSION TAG	UNP Q2GA79
A	-6	GLU	-	EXPRESSION TAG	UNP Q2GA79
A	-5	ASN	-	EXPRESSION TAG	UNP Q2GA79
A	-4	LEU	-	EXPRESSION TAG	UNP Q2GA79
A	-3	TYR	-	EXPRESSION TAG	UNP Q2GA79
A	-2	PHE	-	EXPRESSION TAG	UNP Q2GA79
A	-1	GLN	-	EXPRESSION TAG	UNP Q2GA79
A	0	SER	-	EXPRESSION TAG	UNP Q2GA79
A	314	ASN	ASP	ENGINEERED MUTATION	UNP Q2GA79
B	-21	MET	-	EXPRESSION TAG	UNP Q2GA79
B	-20	HIS	-	EXPRESSION TAG	UNP Q2GA79

Continued on next page...

Continued from previous page...

Chain	Residue	Modelled	Actual	Comment	Reference
B	-19	HIS	-	EXPRESSION TAG	UNP Q2GA79
B	-18	HIS	-	EXPRESSION TAG	UNP Q2GA79
B	-17	HIS	-	EXPRESSION TAG	UNP Q2GA79
B	-16	HIS	-	EXPRESSION TAG	UNP Q2GA79
B	-15	HIS	-	EXPRESSION TAG	UNP Q2GA79
B	-14	SER	-	EXPRESSION TAG	UNP Q2GA79
B	-13	SER	-	EXPRESSION TAG	UNP Q2GA79
B	-12	GLY	-	EXPRESSION TAG	UNP Q2GA79
B	-11	VAL	-	EXPRESSION TAG	UNP Q2GA79
B	-10	ASP	-	EXPRESSION TAG	UNP Q2GA79
B	-9	LEU	-	EXPRESSION TAG	UNP Q2GA79
B	-8	GLY	-	EXPRESSION TAG	UNP Q2GA79
B	-7	THR	-	EXPRESSION TAG	UNP Q2GA79
B	-6	GLU	-	EXPRESSION TAG	UNP Q2GA79
B	-5	ASN	-	EXPRESSION TAG	UNP Q2GA79
B	-4	LEU	-	EXPRESSION TAG	UNP Q2GA79
B	-3	TYR	-	EXPRESSION TAG	UNP Q2GA79
B	-2	PHE	-	EXPRESSION TAG	UNP Q2GA79
B	-1	GLN	-	EXPRESSION TAG	UNP Q2GA79
B	0	SER	-	EXPRESSION TAG	UNP Q2GA79
B	314	ASN	ASP	ENGINEERED MUTATION	UNP Q2GA79

- Molecule 2 is GLYCEROL (three-letter code: GOL) (formula: C₃H₈O₃).



Mol	Chain	Residues	Atoms			ZeroOcc	AltConf
2	A	1	Total	C	O	0	0
			6	3	3		

Continued on next page...

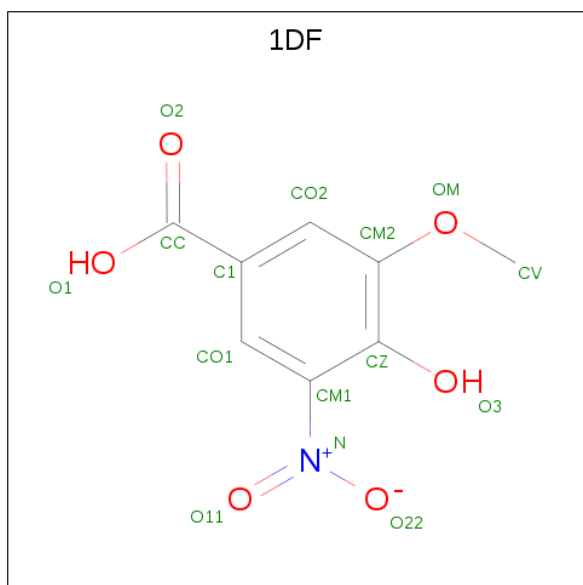
Continued from previous page...

Mol	Chain	Residues	Atoms			ZeroOcc	AltConf
2	B	1	Total	C	O	0	0
			6	3	3		
2	B	1	Total	C	O	0	0
			6	3	3		

- Molecule 3 is CHLORIDE ION (three-letter code: CL) (formula: Cl).

Mol	Chain	Residues	Atoms		ZeroOcc	AltConf
3	A	2	Total	Cl	0	0
			2	2		

- Molecule 4 is 4-hydroxy-3-methoxy-5-nitrobenzoic acid (three-letter code: 1DF) (formula: C₈H₇NO₆).



Mol	Chain	Residues	Atoms				ZeroOcc	AltConf
4	A	1	Total	C	N	O	0	0
			15	8	1	6		
4	B	1	Total	C	N	O	0	0
			15	8	1	6		

- Molecule 5 is water.

Mol	Chain	Residues	Atoms		ZeroOcc	AltConf
5	A	387	Total	O	0	1
			388	388		

Continued on next page...

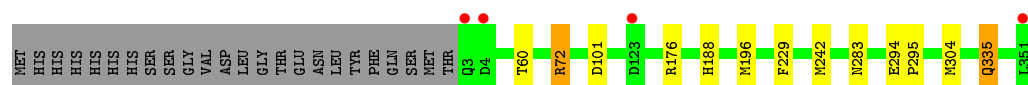
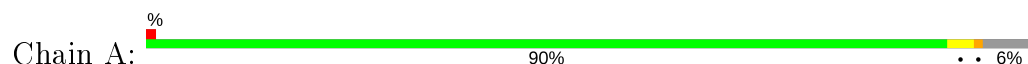
Continued from previous page...

Mol	Chain	Residues	Atoms		ZeroOcc	AltConf
5	B	368	Total	O	0	2
			369	369		

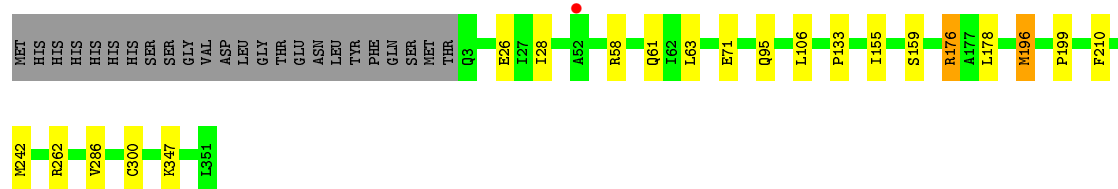
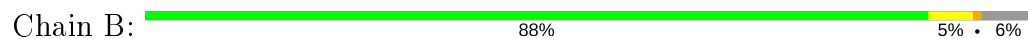
3 Residue-property plots [i](#)

These plots are drawn for all protein, RNA and DNA chains in the entry. The first graphic for a chain summarises the proportions of the various outlier classes displayed in the second graphic. The second graphic shows the sequence view annotated by issues in geometry and electron density. Residues are color-coded according to the number of geometric quality criteria for which they contain at least one outlier: green = 0, yellow = 1, orange = 2 and red = 3 or more. A red dot above a residue indicates a poor fit to the electron density ($RSRZ > 2$). Stretches of 2 or more consecutive residues without any outlier are shown as a green connector. Residues present in the sample, but not in the model, are shown in grey.

- Molecule 1: Ligw2 Decarboxylase



- Molecule 1: Ligw2 Decarboxylase



4 Data and refinement statistics

Property	Value	Source
Space group	P 21 21 21	Depositor
Cell constants a, b, c, α , β , γ	60.42Å 85.40Å 141.62Å 90.00° 90.00° 90.00°	Depositor
Resolution (Å)	50.00 – 1.76 42.70 – 1.76	Depositor EDS
% Data completeness (in resolution range)	99.5 (50.00-1.76) 99.5 (42.70-1.76)	Depositor EDS
R_{merge}	0.17	Depositor
R_{sym}	0.17	Depositor
$\langle I/\sigma(I) \rangle$ ¹	2.20 (at 1.76Å)	Xtriage
Refinement program	REFMAC 5.8.0069	Depositor
R, R_{free}	0.162 , 0.205 0.176 , 0.218	Depositor DCC
R_{free} test set	2262 reflections (3.10%)	wwPDB-VP
Wilson B-factor (Å ²)	17.3	Xtriage
Anisotropy	0.721	Xtriage
Bulk solvent k_{sol} (e/Å ³), B_{sol} (Å ²)	0.36 , 39.7	EDS
L-test for twinning ²	$\langle L \rangle = 0.50$, $\langle L^2 \rangle = 0.33$	Xtriage
Estimated twinning fraction	No twinning to report.	Xtriage
F_o, F_c correlation	0.96	EDS
Total number of atoms	6435	wwPDB-VP
Average B, all atoms (Å ²)	29.0	wwPDB-VP

Xtriage's analysis on translational NCS is as follows: *The largest off-origin peak in the Patterson function is 4.00% of the height of the origin peak. No significant pseudotranslation is detected.*

¹Intensities estimated from amplitudes.

²Theoretical values of $\langle |L| \rangle$, $\langle L^2 \rangle$ for acentric reflections are 0.5, 0.333 respectively for untwinned datasets, and 0.375, 0.2 for perfectly twinned datasets.

5 Model quality [i](#)

5.1 Standard geometry [i](#)

Bond lengths and bond angles in the following residue types are not validated in this section: 1DF, GOL, CL

The Z score for a bond length (or angle) is the number of standard deviations the observed value is removed from the expected value. A bond length (or angle) with $|Z| > 5$ is considered an outlier worth inspection. RMSZ is the root-mean-square of all Z scores of the bond lengths (or angles).

Mol	Chain	Bond lengths		Bond angles	
		RMSZ	$\# Z > 5$	RMSZ	$\# Z > 5$
1	A	0.54	0/2878	0.74	1/3888 (0.0%)
1	B	0.54	0/2901	0.75	1/3917 (0.0%)
All	All	0.54	0/5779	0.75	2/7805 (0.0%)

There are no bond length outliers.

All (2) bond angle outliers are listed below:

Mol	Chain	Res	Type	Atoms	Z	Observed(°)	Ideal(°)
1	A	176	ARG	NE-CZ-NH1	5.39	123.00	120.30
1	B	196	MET	CG-SD-CE	-5.20	91.88	100.20

There are no chirality outliers.

There are no planarity outliers.

5.2 Too-close contacts [i](#)

In the following table, the Non-H and H(model) columns list the number of non-hydrogen atoms and hydrogen atoms in the chain respectively. The H(added) column lists the number of hydrogen atoms added and optimized by MolProbity. The Clashes column lists the number of clashes within the asymmetric unit, whereas Symm-Clashes lists symmetry related clashes.

Mol	Chain	Non-H	H(model)	H(added)	Clashes	Symm-Clashes
1	A	2807	0	2765	9	0
1	B	2821	0	2803	13	0
2	A	6	0	8	0	0
2	B	12	0	16	1	0
3	A	2	0	0	0	0
4	A	15	0	5	1	0
4	B	15	0	5	0	0

Continued on next page...

Continued from previous page...

Mol	Chain	Non-H	H(model)	H(added)	Clashes	Symm-Clashes
5	A	388	0	0	1	0
5	B	369	0	0	2	0
All	All	6435	0	5602	20	0

The all-atom clashscore is defined as the number of clashes found per 1000 atoms (including hydrogen atoms). The all-atom clashscore for this structure is 2.

All (20) close contacts within the same asymmetric unit are listed below, sorted by their clash magnitude.

Atom-1	Atom-2	Interatomic distance (Å)	Clash overlap (Å)
1:B:176:ARG:HG2	1:B:176:ARG:HH11	1.35	0.89
1:A:60[A]:THR:HG22	5:A:720:HOH:O	1.82	0.80
1:B:176:ARG:NH1	1:B:176:ARG:HG2	2.05	0.71
1:B:58:ARG:NH2	5:B:861:HOH:O	2.29	0.63
1:B:176:ARG:NH1	5:B:663:HOH:O	2.31	0.63
1:B:28[B]:ILE:HD13	1:B:63:LEU:HD11	1.85	0.58
1:A:196:MET:HG3	1:B:199:PRO:HD2	1.88	0.55
1:A:72:ARG:CZ	1:A:72:ARG:HB3	2.39	0.53
1:A:335:GLN:H	1:A:335:GLN:HE21	1.62	0.48
1:B:95:GLN:HG2	1:B:133:PRO:HD2	1.98	0.45
1:A:188:HIS:CE1	4:A:404:1DF:O3	2.69	0.45
1:A:294:GLU:HB3	1:A:295:PRO:HD3	2.01	0.43
1:A:335:GLN:H	1:A:335:GLN:NE2	2.16	0.43
1:B:26[A]:GLU:HG3	1:B:106:LEU:HD22	2.00	0.43
1:B:155:ILE:HG12	1:B:178:LEU:HD21	2.00	0.42
1:A:229:PHE:CE1	1:A:283:ASN:HB3	2.55	0.42
1:B:347:LYS:HD2	2:B:402:GOL:H31	2.02	0.42
1:B:286[B]:VAL:HG21	1:B:300:CYS:SG	2.60	0.41
1:B:176:ARG:CG	1:B:176:ARG:NH1	2.73	0.41
1:A:196:MET:HG2	1:B:196:MET:O	2.20	0.40

There are no symmetry-related clashes.

5.3 Torsion angles ⓘ

5.3.1 Protein backbone ⓘ

In the following table, the Percentiles column shows the percent Ramachandran outliers of the chain as a percentile score with respect to all X-ray entries followed by that with respect to entries of similar resolution.

The Analysed column shows the number of residues for which the backbone conformation was analysed, and the total number of residues.

Mol	Chain	Analysed	Favoured	Allowed	Outliers	Percentiles	
1	A	351/373 (94%)	342 (97%)	9 (3%)	0	100	100
1	B	353/373 (95%)	343 (97%)	9 (2%)	1 (0%)	41	22
All	All	704/746 (94%)	685 (97%)	18 (3%)	1 (0%)	51	33

All (1) Ramachandran outliers are listed below:

Mol	Chain	Res	Type
1	B	210	PHE

5.3.2 Protein sidechains ⓘ

In the following table, the Percentiles column shows the percent sidechain outliers of the chain as a percentile score with respect to all X-ray entries followed by that with respect to entries of similar resolution.

The Analysed column shows the number of residues for which the sidechain conformation was analysed, and the total number of residues.

Mol	Chain	Analysed	Rotameric	Outliers	Percentiles	
1	A	293/312 (94%)	288 (98%)	5 (2%)	60	42
1	B	296/312 (95%)	290 (98%)	6 (2%)	55	34
All	All	589/624 (94%)	578 (98%)	11 (2%)	57	37

All (11) residues with a non-rotameric sidechain are listed below:

Mol	Chain	Res	Type
1	A	72	ARG
1	A	101	ASP
1	A	242	MET
1	A	304	MET
1	A	335	GLN
1	B	61	GLN
1	B	71	GLU
1	B	159	SER
1	B	176	ARG
1	B	242	MET
1	B	262	ARG

Some sidechains can be flipped to improve hydrogen bonding and reduce clashes. All (4) such sidechains are listed below:

Mol	Chain	Res	Type
1	A	156	GLN
1	A	158	ASN
1	A	302	GLN
1	A	335	GLN

5.3.3 RNA [i](#)

There are no RNA molecules in this entry.

5.4 Non-standard residues in protein, DNA, RNA chains [i](#)

There are no non-standard protein/DNA/RNA residues in this entry.

5.5 Carbohydrates [i](#)

There are no carbohydrates in this entry.

5.6 Ligand geometry [i](#)

Of 7 ligands modelled in this entry, 2 are monoatomic - leaving 5 for Mogul analysis.

In the following table, the Counts columns list the number of bonds (or angles) for which Mogul statistics could be retrieved, the number of bonds (or angles) that are observed in the model and the number of bonds (or angles) that are defined in the Chemical Component Dictionary. The Link column lists molecule types, if any, to which the group is linked. The Z score for a bond length (or angle) is the number of standard deviations the observed value is removed from the expected value. A bond length (or angle) with $|Z| > 2$ is considered an outlier worth inspection. RMSZ is the root-mean-square of all Z scores of the bond lengths (or angles).

Mol	Type	Chain	Res	Link	Bond lengths			Bond angles		
					Counts	RMSZ	$\# Z > 2$	Counts	RMSZ	$\# Z > 2$
2	GOL	B	401	-	5,5,5	0.18	0	5,5,5	0.78	0
2	GOL	B	402	-	5,5,5	0.22	0	5,5,5	0.60	0
4	1DF	A	404	-	12,15,15	2.27	2 (16%)	13,21,21	1.95	4 (30%)
4	1DF	B	403	-	12,15,15	2.61	1 (8%)	13,21,21	2.21	5 (38%)
2	GOL	A	401	-	5,5,5	0.24	0	5,5,5	0.61	0

In the following table, the Chirals column lists the number of chiral outliers, the number of chiral centers analysed, the number of these observed in the model and the number defined in the

Chemical Component Dictionary. Similar counts are reported in the Torsion and Rings columns.
'-' means no outliers of that kind were identified.

Mol	Type	Chain	Res	Link	Chirals	Torsions	Rings
2	GOL	B	401	-	-	1/4/4/4	-
2	GOL	B	402	-	-	2/4/4/4	-
4	1DF	A	404	-	-	0/4/10/10	0/1/1/1
4	1DF	B	403	-	-	0/4/10/10	0/1/1/1
2	GOL	A	401	-	-	0/4/4/4	-

All (3) bond length outliers are listed below:

Mol	Chain	Res	Type	Atoms	Z	Observed(Å)	Ideal(Å)
4	B	403	1DF	CM1-N	8.19	1.60	1.45
4	A	404	1DF	CM1-N	7.00	1.58	1.45
4	A	404	1DF	O11-N	2.41	1.26	1.22

All (9) bond angle outliers are listed below:

Mol	Chain	Res	Type	Atoms	Z	Observed(°)	Ideal(°)
4	A	404	1DF	OM-CM2-CZ	3.89	118.46	114.54
4	B	403	1DF	OM-CM2-CZ	3.80	118.37	114.54
4	B	403	1DF	CV-OM-CM2	3.68	123.09	117.53
4	B	403	1DF	O11-N-CM1	3.58	125.15	119.03
4	A	404	1DF	CV-OM-CM2	3.46	122.75	117.53
4	A	404	1DF	O11-N-CM1	2.78	123.78	119.03
4	B	403	1DF	CO1-C1-CC	-2.53	117.03	120.36
4	B	403	1DF	CO1-CM1-CZ	-2.39	119.35	122.51
4	A	404	1DF	CO1-CM1-CZ	-2.30	119.47	122.51

There are no chirality outliers.

All (3) torsion outliers are listed below:

Mol	Chain	Res	Type	Atoms
2	B	402	GOL	C1-C2-C3-O3
2	B	402	GOL	O2-C2-C3-O3
2	B	401	GOL	O1-C1-C2-C3

There are no ring outliers.

2 monomers are involved in 2 short contacts:

Mol	Chain	Res	Type	Clashes	Symm-Clashes
2	B	402	GOL	1	0

Continued on next page...

Continued from previous page...

Mol	Chain	Res	Type	Clashes	Symm-Clashes
4	A	404	1DF	1	0

5.7 Other polymers [i](#)

There are no such residues in this entry.

5.8 Polymer linkage issues [i](#)

There are no chain breaks in this entry.

6 Fit of model and data [i](#)

6.1 Protein, DNA and RNA chains [i](#)

In the following table, the column labelled ‘#RSRZ> 2’ contains the number (and percentage) of RSRZ outliers, followed by percent RSRZ outliers for the chain as percentile scores relative to all X-ray entries and entries of similar resolution. The OWAB column contains the minimum, median, 95th percentile and maximum values of the occupancy-weighted average B-factor per residue. The column labelled ‘Q< 0.9’ lists the number of (and percentage) of residues with an average occupancy less than 0.9.

Mol	Chain	Analysed	<RSRZ>	#RSRZ>2	OWAB(Å ²)	Q<0.9
1	A	349/373 (93%)	-0.04	4 (1%) 80 86	19, 25, 42, 91	0
1	B	349/373 (93%)	-0.08	1 (0%) 94 95	19, 25, 47, 77	0
All	All	698/746 (93%)	-0.06	5 (0%) 87 92	19, 25, 45, 91	0

All (5) RSRZ outliers are listed below:

Mol	Chain	Res	Type	RSRZ
1	A	3	GLN	3.4
1	B	52	ALA	3.1
1	A	4	ASP	2.3
1	A	123	ASP	2.3
1	A	351	LEU	2.0

6.2 Non-standard residues in protein, DNA, RNA chains [i](#)

There are no non-standard protein/DNA/RNA residues in this entry.

6.3 Carbohydrates [i](#)

There are no carbohydrates in this entry.

6.4 Ligands [i](#)

In the following table, the Atoms column lists the number of modelled atoms in the group and the number defined in the chemical component dictionary. The B-factors column lists the minimum, median, 95th percentile and maximum values of B factors of atoms in the group. The column labelled ‘Q< 0.9’ lists the number of atoms with occupancy less than 0.9.

Mol	Type	Chain	Res	Atoms	RSCC	RSR	B-factors(\AA^2)	Q<0.9
3	CL	A	403	1/1	0.84	0.08	43,43,43,43	0
2	GOL	B	402	6/6	0.91	0.27	39,53,60,64	0
4	1DF	B	403	15/15	0.91	0.11	22,34,47,60	0
4	1DF	A	404	15/15	0.91	0.11	20,30,42,43	0
2	GOL	A	401	6/6	0.95	0.09	27,33,38,39	0
2	GOL	B	401	6/6	0.95	0.08	26,34,37,72	0
3	CL	A	402	1/1	0.97	0.10	45,45,45,45	0

6.5 Other polymers [i](#)

There are no such residues in this entry.