



Full wwPDB X-ray Structure Validation Report ⓘ

May 26, 2020 – 05:15 am BST

PDB ID : 6QS9
Title : Bovine Serum Albumin in complex with Ketoprofen
Authors : Donini, S.; Parisini, E.
Deposited on : 2019-02-20
Resolution : 2.80 Å(reported)

This is a Full wwPDB X-ray Structure Validation Report for a publicly released PDB entry.

We welcome your comments at validation@mail.wwpdb.org

A user guide is available at

<https://www.wwpdb.org/validation/2017/XrayValidationReportHelp>

with specific help available everywhere you see the ⓘ symbol.

The following versions of software and data (see [references ⓘ](#)) were used in the production of this report:

MolProbity : 4.02b-467
Mogul : 1.8.5 (274361), CSD as541be (2020)
Xtriage (Phenix) : 1.13
EDS : 2.11
buster-report : 1.1.7 (2018)
Percentile statistics : 20191225.v01 (using entries in the PDB archive December 25th 2019)
Refmac : 5.8.0158
CCP4 : 7.0.044 (Gargrove)
Ideal geometry (proteins) : Engh & Huber (2001)
Ideal geometry (DNA, RNA) : Parkinson et al. (1996)
Validation Pipeline (wwPDB-VP) : 2.11

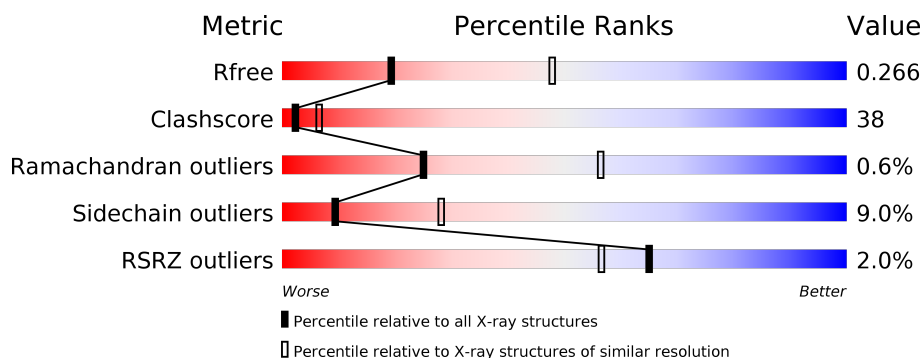
1 Overall quality at a glance

The following experimental techniques were used to determine the structure:

X-RAY DIFFRACTION

The reported resolution of this entry is 2.80 Å.

Percentile scores (ranging between 0-100) for global validation metrics of the entry are shown in the following graphic. The table shows the number of entries on which the scores are based.



Metric	Whole archive (#Entries)	Similar resolution (#Entries, resolution range(Å))
R_{free}	130704	3140 (2.80-2.80)
Clashscore	141614	3569 (2.80-2.80)
Ramachandran outliers	138981	3498 (2.80-2.80)
Sidechain outliers	138945	3500 (2.80-2.80)
RSRZ outliers	127900	3078 (2.80-2.80)

The table below summarises the geometric issues observed across the polymeric chains and their fit to the electron density. The red, orange, yellow and green segments on the lower bar indicate the fraction of residues that contain outliers for ≥ 3 , 2, 1 and 0 types of geometric quality criteria respectively. A grey segment represents the fraction of residues that are not modelled. The numeric value for each fraction is indicated below the corresponding segment, with a dot representing fractions $\leq 5\%$. The upper red bar (where present) indicates the fraction of residues that have poor fit to the electron density. The numeric value is given above the bar.

Mol	Chain	Length	Quality of chain
1	A	607	<div> <div>%</div> <div> <div></div> <div>46%</div> <div>44%</div> <div>5%</div> <div>.</div> </div> </div>
1	B	607	<div> <div>3%</div> <div> <div></div> <div>42%</div> <div>47%</div> <div>6%</div> <div>5%</div> </div> </div>

2 Entry composition [i](#)

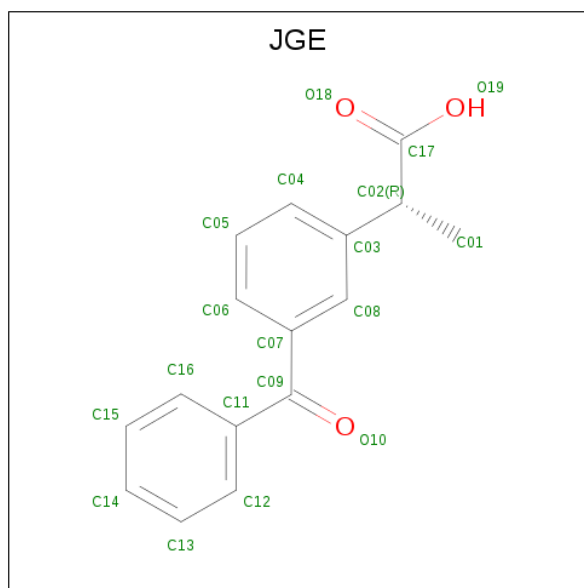
There are 4 unique types of molecules in this entry. The entry contains 9371 atoms, of which 26 are hydrogens and 0 are deuteriums.

In the tables below, the ZeroOcc column contains the number of atoms modelled with zero occupancy, the AltConf column contains the number of residues with at least one atom in alternate conformation and the Trace column contains the number of residues modelled with at most 2 atoms.

- Molecule 1 is a protein called Serum albumin.

Mol	Chain	Residues	Atoms					ZeroOcc	AltConf	Trace
1	A	580	Total	C	N	O	S	0	0	0
			4626	2920	776	891	39			
1	B	576	Total	C	N	O	S	0	0	0
			4600	2905	773	883	39			

- Molecule 2 is (R)-Ketoprofen (three-letter code: JGE) (formula: $C_{16}H_{14}O_3$) (labeled as "Ligand of Interest" by author).



Mol	Chain	Residues	Atoms				ZeroOcc	AltConf
2	A	1	Total	C	H	O	0	0
			32	16	13	3		
2	B	1	Total	C	H	O	0	0
			32	16	13	3		

- Molecule 3 is CALCIUM ION (three-letter code: CA) (formula: Ca).

Mol	Chain	Residues	Atoms	ZeroOcc	AltConf
3	B	2	Total Ca 2 2	0	0
3	A	2	Total Ca 2 2	0	0

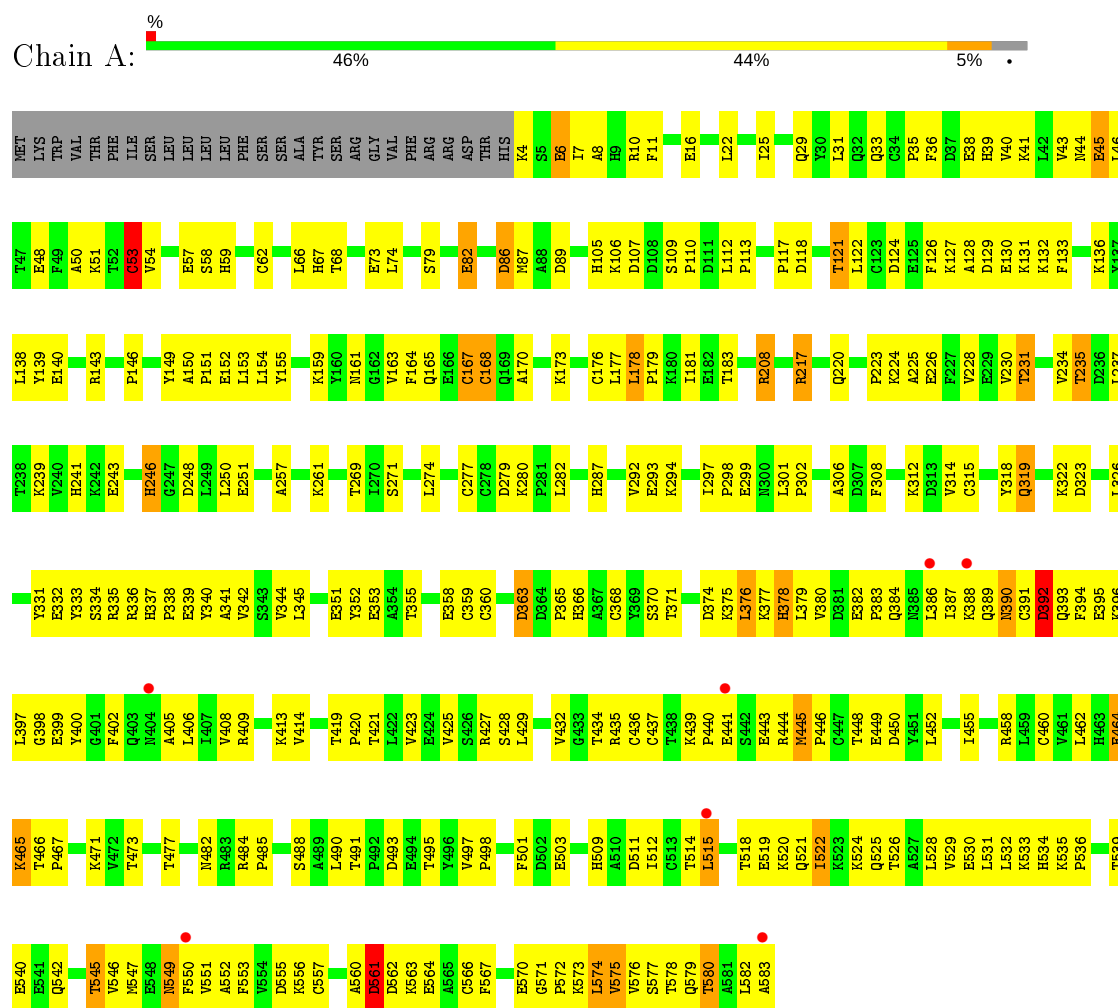
- Molecule 4 is water.

Mol	Chain	Residues	Atoms	ZeroOcc	AltConf
4	A	46	Total O 46 46	0	0
4	B	31	Total O 31 31	0	0

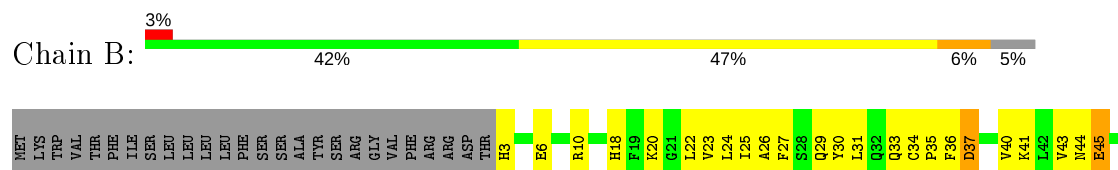
3 Residue-property plots

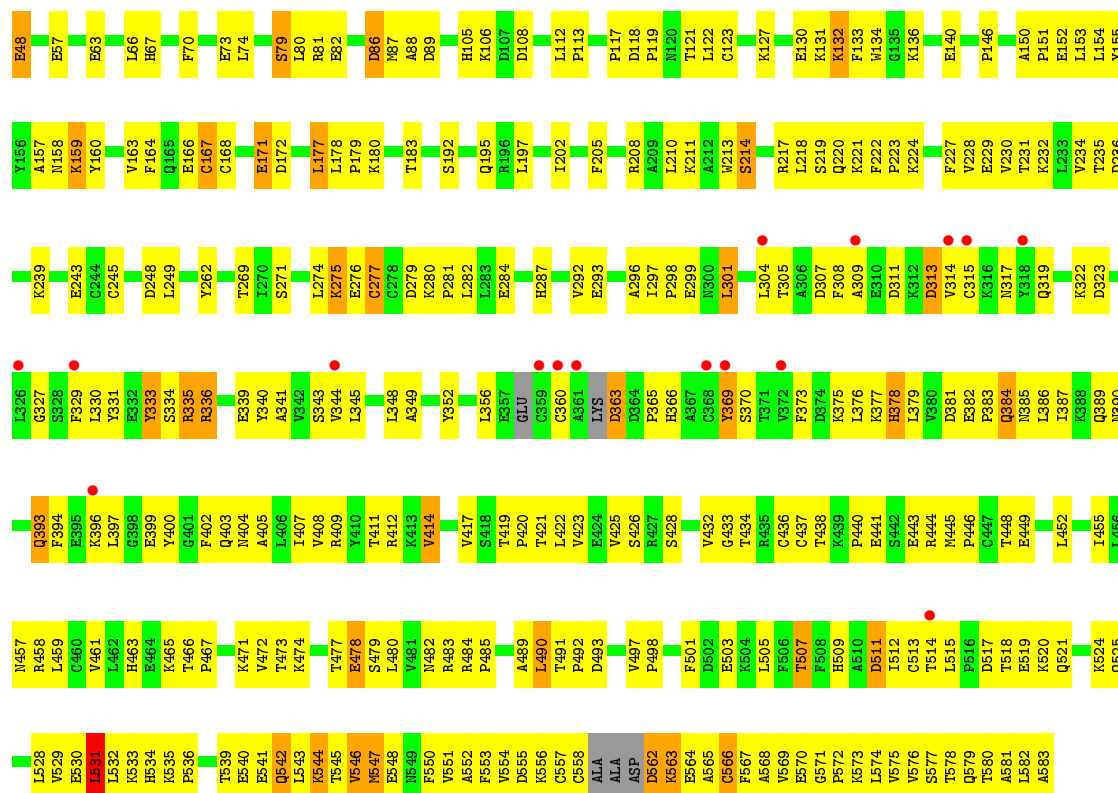
These plots are drawn for all protein, RNA and DNA chains in the entry. The first graphic for a chain summarises the proportions of the various outlier classes displayed in the second graphic. The second graphic shows the sequence view annotated by issues in geometry and electron density. Residues are color-coded according to the number of geometric quality criteria for which they contain at least one outlier: green = 0, yellow = 1, orange = 2 and red = 3 or more. A red dot above a residue indicates a poor fit to the electron density ($RSRZ > 2$). Stretches of 2 or more consecutive residues without any outlier are shown as a green connector. Residues present in the sample, but not in the model, are shown in grey.

• Molecule 1: Serum albumin



• Molecule 1: Serum albumin





4 Data and refinement statistics

Property	Value	Source
Space group	C 1 2 1	Depositor
Cell constants a, b, c, α , β , γ	212.49Å 44.37Å 142.72Å 90.00° 113.24° 90.00°	Depositor
Resolution (Å)	46.59 – 2.80 46.58 – 2.80	Depositor EDS
% Data completeness (in resolution range)	99.2 (46.59-2.80) 99.3 (46.58-2.80)	Depositor EDS
R_{merge}	0.03	Depositor
R_{sym}	(Not available)	Depositor
$\langle I/\sigma(I) \rangle$ ¹	2.81 (at 2.81Å)	Xtriage
Refinement program	PHENIX 1.8.2_1309	Depositor
R, R_{free}	0.215 , 0.272 0.217 , 0.266	Depositor DCC
R_{free} test set	1526 reflections (4.99%)	wwPDB-VP
Wilson B-factor (Å ²)	81.5	Xtriage
Anisotropy	0.122	Xtriage
Bulk solvent k_{sol} (e/Å ³), B_{sol} (Å ²)	0.30 , 55.9	EDS
L-test for twinning ²	$\langle L \rangle = 0.49$, $\langle L^2 \rangle = 0.33$	Xtriage
Estimated twinning fraction	No twinning to report.	Xtriage
F_o, F_c correlation	0.95	EDS
Total number of atoms	9371	wwPDB-VP
Average B, all atoms (Å ²)	67.0	wwPDB-VP

Xtriage's analysis on translational NCS is as follows: *The largest off-origin peak in the Patterson function is 4.58% of the height of the origin peak. No significant pseudotranslation is detected.*

¹Intensities estimated from amplitudes.

²Theoretical values of $\langle |L| \rangle$, $\langle L^2 \rangle$ for acentric reflections are 0.5, 0.333 respectively for untwinned datasets, and 0.375, 0.2 for perfectly twinned datasets.

5 Model quality [i](#)

5.1 Standard geometry [i](#)

Bond lengths and bond angles in the following residue types are not validated in this section: CA, JGE

The Z score for a bond length (or angle) is the number of standard deviations the observed value is removed from the expected value. A bond length (or angle) with $|Z| > 5$ is considered an outlier worth inspection. RMSZ is the root-mean-square of all Z scores of the bond lengths (or angles).

Mol	Chain	Bond lengths		Bond angles	
		RMSZ	$\# Z > 5$	RMSZ	$\# Z > 5$
1	A	0.58	2/4720 (0.0%)	0.68	1/6371 (0.0%)
1	B	0.55	1/4692 (0.0%)	0.67	1/6329 (0.0%)
All	All	0.56	3/9412 (0.0%)	0.68	2/12700 (0.0%)

All (3) bond length outliers are listed below:

Mol	Chain	Res	Type	Atoms	Z	Observed(Å)	Ideal(Å)
1	A	53	CYS	CB-SG	9.45	1.98	1.82
1	A	62	CYS	CB-SG	9.41	1.98	1.82
1	B	277	CYS	CB-SG	-5.28	1.73	1.81

All (2) bond angle outliers are listed below:

Mol	Chain	Res	Type	Atoms	Z	Observed(°)	Ideal(°)
1	B	531	LEU	CA-CB-CG	6.12	129.38	115.30
1	A	392	ASP	CB-CG-OD1	-5.58	113.28	118.30

There are no chirality outliers.

There are no planarity outliers.

5.2 Too-close contacts [i](#)

In the following table, the Non-H and H(model) columns list the number of non-hydrogen atoms and hydrogen atoms in the chain respectively. The H(added) column lists the number of hydrogen atoms added and optimized by MolProbity. The Clashes column lists the number of clashes within the asymmetric unit, whereas Symm-Clashes lists symmetry related clashes.

Mol	Chain	Non-H	H(model)	H(added)	Clashes	Symm-Clashes
1	A	4626	0	4542	310	0

Continued on next page...

Continued from previous page...

Mol	Chain	Non-H	H(model)	H(added)	Clashes	Symm-Clashes
1	B	4600	0	4513	389	0
2	A	19	13	0	2	0
2	B	19	13	0	0	0
3	A	2	0	0	0	0
3	B	2	0	0	0	0
4	A	46	0	0	21	0
4	B	31	0	0	14	0
All	All	9345	26	9055	699	0

The all-atom clashscore is defined as the number of clashes found per 1000 atoms (including hydrogen atoms). The all-atom clashscore for this structure is 38.

All (699) close contacts within the same asymmetric unit are listed below, sorted by their clash magnitude.

Atom-1	Atom-2	Interatomic distance (Å)	Clash overlap (Å)
1:B:314:VAL:HG21	1:B:369:TYR:CZ	1.32	1.58
1:B:314:VAL:CG2	1:B:369:TYR:CZ	1.92	1.48
1:B:314:VAL:CG2	1:B:369:TYR:CE2	2.00	1.45
1:A:400:TYR:CE1	4:A:701:HOH:O	1.84	1.27
1:B:314:VAL:HG21	1:B:369:TYR:CE2	1.64	1.26
1:A:400:TYR:HE1	4:A:701:HOH:O	1.10	1.26
1:B:579:GLN:HA	1:B:582:LEU:HD23	1.18	1.12
1:A:344:VAL:HG21	1:A:445:MET:HE1	1.32	1.12
1:B:314:VAL:HG22	1:B:369:TYR:CZ	1.82	1.10
1:B:314:VAL:HG22	1:B:369:TYR:OH	1.52	1.08
1:A:59:HIS:HD2	4:A:720:HOH:O	1.35	1.07
1:B:408:VAL:HG13	1:B:532:LEU:HD11	1.32	1.06
1:B:535:LYS:HE3	1:B:582:LEU:HD22	1.36	1.05
1:B:570:GLU:HA	1:B:573:LYS:HD3	1.35	1.03
1:A:306:ALA:HB3	4:A:706:HOH:O	1.58	1.01
1:B:314:VAL:CG2	1:B:369:TYR:OH	2.05	1.01
1:B:383:PRO:HG2	1:B:445:MET:HE3	1.43	1.00
1:B:29:GLN:HG2	1:B:146:PRO:HA	1.41	0.99
1:A:167:CYS:HB3	1:A:177:LEU:HD21	1.45	0.98
1:A:460:CYS:O	1:A:464:GLU:CG	2.12	0.97
1:B:400:TYR:CE2	1:B:521:GLN:HG2	1.98	0.97
1:B:314:VAL:HG22	1:B:369:TYR:CE2	1.94	0.96
1:A:45:GLU:OE2	1:A:46:LEU:N	1.97	0.96
1:A:560:ALA:CB	4:A:743:HOH:O	2.13	0.96
1:A:460:CYS:O	1:A:464:GLU:HG2	1.65	0.95
1:B:314:VAL:HG21	1:B:369:TYR:CE1	2.02	0.94

Continued on next page...

Continued from previous page...

Atom-1	Atom-2	Interatomic distance (Å)	Clash overlap (Å)
1:A:118:ASP:HB3	1:A:121:THR:CG2	1.97	0.94
1:A:29:GLN:HG2	1:A:146:PRO:HA	1.50	0.93
1:B:566:CYS:SG	1:B:570:GLU:HG3	2.09	0.92
1:A:498:PRO:HG3	1:A:536:PRO:HG2	1.52	0.92
1:A:326:LEU:HD11	1:A:353:GLU:HG3	1.51	0.91
1:A:560:ALA:HB2	4:A:743:HOH:O	1.69	0.91
1:B:473:THR:HG22	4:B:721:HOH:O	1.71	0.89
1:A:408:VAL:HG12	1:A:532:LEU:HD11	1.54	0.87
1:B:389:GLN:O	1:B:393:GLN:HB2	1.74	0.86
1:B:63:GLU:N	1:B:63:GLU:OE2	2.08	0.86
1:B:531:LEU:HD23	1:B:532:LEU:N	1.90	0.86
1:A:341:ALA:HB2	1:A:446:PRO:HA	1.55	0.86
1:B:543:LEU:HB2	1:B:544:LYS:HZ1	1.41	0.86
1:A:332:GLU:OE1	1:A:336:ARG:NH2	2.09	0.85
1:B:503:GLU:O	1:B:507:THR:HG22	1.78	0.84
1:B:400:TYR:HE2	1:B:521:GLN:HG2	1.41	0.83
1:A:59:HIS:CD2	4:A:720:HOH:O	2.17	0.83
1:A:511:ASP:O	1:A:515:LEU:HD13	1.79	0.82
1:A:6:GLU:OE1	4:A:702:HOH:O	1.96	0.82
1:B:471:LYS:NZ	1:B:493:ASP:OD2	2.10	0.82
1:B:544:LYS:H	1:B:544:LYS:NZ	1.77	0.82
1:A:33:GLN:HG2	4:A:738:HOH:O	1.80	0.82
1:B:202:ILE:HD11	1:B:210:LEU:HD22	1.61	0.81
1:B:404:ASN:O	1:B:408:VAL:HG23	1.81	0.81
1:B:498:PRO:HG3	1:B:536:PRO:HG2	1.63	0.81
1:B:449:GLU:OE2	1:B:484:ARG:HD3	1.80	0.81
1:A:366:HIS:O	1:A:370:SER:OG	1.99	0.80
1:A:460:CYS:O	1:A:464:GLU:HG3	1.80	0.80
1:A:79:SER:HA	1:A:82:GLU:OE1	1.82	0.80
1:B:562:ASP:HA	1:B:564:GLU:N	1.97	0.80
1:A:340:TYR:HB2	1:A:345:LEU:HD11	1.63	0.79
1:A:432:VAL:O	1:A:436:CYS:N	2.15	0.79
1:B:528:LEU:HD12	1:B:531:LEU:HD22	1.64	0.79
1:B:202:ILE:HD11	1:B:210:LEU:CD2	2.13	0.79
1:B:224:LYS:NZ	1:B:296:ALA:O	2.15	0.79
1:B:535:LYS:HE3	1:B:582:LEU:CD2	2.13	0.79
1:B:387:ILE:CD1	1:B:445:MET:HA	2.13	0.78
1:A:384:GLN:OE1	1:A:384:GLN:N	2.16	0.78
1:A:439:LYS:HB3	1:A:440:PRO:HD2	1.66	0.78
1:B:386:LEU:O	1:B:390:ASN:ND2	2.14	0.78
1:B:562:ASP:N	1:B:565:ALA:HB3	1.99	0.78

Continued on next page...

Continued from previous page...

Atom-1	Atom-2	Interatomic distance (Å)	Clash overlap (Å)
1:B:301:LEU:HD13	1:B:336:ARG:HE	1.46	0.77
1:B:541:GLU:HA	1:B:544:LYS:HD2	1.63	0.77
1:A:344:VAL:HG21	1:A:445:MET:CE	2.12	0.77
1:B:67:HIS:HE1	4:B:720:HOH:O	1.67	0.77
1:B:572:PRO:O	1:B:575:VAL:HG12	1.85	0.77
1:A:45:GLU:N	1:A:45:GLU:CD	2.36	0.77
1:A:553:PHE:CE2	1:A:574:LEU:HD21	2.20	0.77
1:A:118:ASP:HB3	1:A:121:THR:HG22	1.65	0.76
1:B:298:PRO:HG2	1:B:301:LEU:CD2	2.15	0.76
1:A:465:LYS:HE3	1:A:466:THR:CG2	2.16	0.76
1:B:544:LYS:H	1:B:544:LYS:HZ2	1.31	0.76
1:B:412:ARG:HB3	1:B:492:PRO:HG3	1.66	0.76
1:A:124:ASP:OD1	1:A:124:ASP:N	2.15	0.75
1:B:314:VAL:HG23	1:B:369:TYR:CE2	2.17	0.75
1:A:575:VAL:O	1:A:579:GLN:HB2	1.87	0.75
1:A:518:THR:HA	1:A:521:GLN:OE1	1.86	0.75
1:B:509:HIS:O	1:B:512:ILE:HG22	1.87	0.75
1:B:341:ALA:HB3	1:B:344:VAL:HG23	1.66	0.75
1:A:179:PRO:O	1:A:183:THR:HG23	1.86	0.74
1:A:400:TYR:OH	1:A:524:LYS:HD3	1.86	0.74
1:B:535:LYS:CE	1:B:582:LEU:HD22	2.17	0.74
1:A:408:VAL:HA	1:A:532:LEU:CD1	2.18	0.74
1:A:340:TYR:CB	1:A:345:LEU:HD11	2.17	0.74
1:B:305:THR:HG22	1:B:373:PHE:CD2	2.23	0.74
1:A:441:GLU:OE2	1:A:444:ARG:NH2	2.20	0.74
1:B:80:LEU:HD11	1:B:87:MET:HE3	1.69	0.74
1:B:521:GLN:O	1:B:525:GLN:HG3	1.87	0.73
1:B:112:LEU:HB3	1:B:113:PRO:HD2	1.69	0.73
1:B:313:ASP:HB2	1:B:317:ASN:ND2	2.03	0.73
1:A:334:SER:OG	1:A:345:LEU:HD23	1.89	0.73
1:B:339:GLU:HG2	1:B:340:TYR:HD1	1.54	0.73
1:B:543:LEU:HA	1:B:546:VAL:HG23	1.69	0.73
1:B:382:GLU:HB2	1:B:383:PRO:HD3	1.70	0.72
1:B:37:ASP:O	1:B:41:LYS:HD3	1.89	0.72
1:B:340:TYR:CB	1:B:345:LEU:HD11	2.20	0.72
1:A:387:ILE:CD1	1:A:445:MET:HA	2.19	0.71
1:B:36:PHE:O	1:B:40:VAL:HG23	1.90	0.71
1:A:35:PRO:HG2	1:A:38:GLU:CD	2.11	0.71
1:A:552:ALA:O	1:A:556:LYS:HG3	1.91	0.71
1:B:383:PRO:HG2	1:B:445:MET:CE	2.20	0.71
1:B:570:GLU:O	1:B:573:LYS:HG2	1.89	0.71

Continued on next page...

Continued from previous page...

Atom-1	Atom-2	Interatomic distance (Å)	Clash overlap (Å)
1:A:224:LYS:HB3	4:A:727:HOH:O	1.89	0.70
1:B:108:ASP:H	1:B:465:LYS:NZ	1.89	0.70
1:B:448:THR:O	1:B:452:LEU:HG	1.91	0.70
1:A:150:ALA:HB3	1:A:151:PRO:HD3	1.73	0.70
1:A:375:LYS:O	1:A:378:HIS:ND1	2.24	0.70
1:A:387:ILE:HD11	1:A:445:MET:HA	1.72	0.70
1:A:465:LYS:HE3	1:A:466:THR:HG23	1.74	0.70
1:B:579:GLN:HA	1:B:582:LEU:CD2	2.10	0.69
1:A:112:LEU:HB3	1:A:113:PRO:HD2	1.74	0.69
1:B:562:ASP:HB2	1:B:566:CYS:HB3	1.73	0.69
1:B:562:ASP:OD1	1:B:566:CYS:N	2.25	0.69
1:A:6:GLU:O	1:A:10:ARG:HG2	1.92	0.69
1:A:45:GLU:N	1:A:45:GLU:OE1	2.26	0.69
1:B:490:LEU:HG	1:B:491:THR:H	1.57	0.69
1:B:419:THR:OG1	1:B:533:LYS:NZ	2.25	0.69
1:A:376:LEU:O	1:A:379:LEU:N	2.25	0.69
1:A:124:ASP:O	1:A:128:ALA:N	2.21	0.69
1:A:339:GLU:HG2	1:A:340:TYR:HD1	1.58	0.69
1:A:139:TYR:OH	1:A:143:ARG:NH1	2.26	0.69
1:A:338:PRO:HG3	4:A:718:HOH:O	1.93	0.69
1:A:382:GLU:HB3	1:A:383:PRO:HD3	1.74	0.68
1:B:524:LYS:HZ3	1:B:547:MET:HE1	1.57	0.68
1:B:575:VAL:O	1:B:579:GLN:HB2	1.93	0.68
1:B:171:GLU:HG2	1:B:172:ASP:H	1.59	0.68
1:B:159:LYS:NZ	1:B:284:GLU:OE1	2.22	0.68
1:B:298:PRO:HG2	1:B:301:LEU:HD21	1.76	0.68
1:A:129:ASP:OD2	1:A:132:LYS:HB3	1.93	0.68
1:B:511:ASP:HA	1:B:514:THR:HG22	1.76	0.68
1:A:163:VAL:O	1:A:167:CYS:HB2	1.93	0.68
1:B:554:VAL:HG13	1:B:558:CYS:HB2	1.75	0.68
1:A:390:ASN:OD1	1:A:390:ASN:N	2.19	0.68
1:B:159:LYS:HD2	1:B:159:LYS:N	2.09	0.68
1:B:483:ARG:CD	4:B:703:HOH:O	2.42	0.68
1:B:394:PHE:HB2	1:B:402:PHE:CD2	2.29	0.68
1:A:560:ALA:HB1	4:A:743:HOH:O	1.86	0.67
1:A:465:LYS:CE	1:A:466:THR:HG23	2.23	0.67
1:B:80:LEU:HD11	1:B:87:MET:CE	2.24	0.67
1:A:511:ASP:HA	1:A:514:THR:HG22	1.76	0.67
1:B:339:GLU:HG2	1:B:340:TYR:CD1	2.29	0.67
1:A:167:CYS:HB3	1:A:177:LEU:CD2	2.24	0.67
1:A:246:HIS:HB3	4:A:731:HOH:O	1.95	0.67

Continued on next page...

Continued from previous page...

Atom-1	Atom-2	Interatomic distance (Å)	Clash overlap (Å)
1:A:579:GLN:O	1:A:582:LEU:HG	1.93	0.67
1:B:498:PRO:HG3	1:B:536:PRO:CG	2.24	0.67
1:A:298:PRO:O	1:A:301:LEU:HD11	1.95	0.67
1:A:67:HIS:NE2	1:A:248:ASP:OD1	2.28	0.67
1:A:425:VAL:HG12	1:A:429:LEU:HD11	1.77	0.66
1:B:474:LYS:NZ	1:B:478:GLU:OE2	2.22	0.66
1:A:155:TYR:CE1	1:A:159:LYS:HE3	2.30	0.66
1:A:509:HIS:O	1:A:512:ILE:HG22	1.95	0.66
1:B:166:GLU:O	1:B:168:CYS:N	2.28	0.66
1:B:384:GLN:OE1	1:B:445:MET:HG3	1.96	0.66
1:B:573:LYS:CE	4:B:726:HOH:O	2.43	0.66
1:A:271:SER:HB3	1:A:274:LEU:HG	1.78	0.66
1:B:171:GLU:H	1:B:171:GLU:CD	1.97	0.66
1:A:405:ALA:O	1:A:408:VAL:HG22	1.96	0.66
1:B:231:THR:O	1:B:235:THR:HG23	1.96	0.65
1:B:578:THR:O	1:B:582:LEU:HB3	1.96	0.65
1:A:427:ARG:NH1	1:A:525:GLN:OE1	2.28	0.65
1:A:547:MET:O	1:A:551:VAL:HG23	1.96	0.65
1:A:8:ALA:HA	1:A:54:VAL:HG12	1.78	0.65
1:A:44:ASN:N	1:A:45:GLU:OE1	2.30	0.65
1:B:106:LYS:NZ	4:B:702:HOH:O	2.20	0.65
1:A:40:VAL:O	1:A:44:ASN:ND2	2.30	0.64
1:B:314:VAL:CG1	1:B:369:TYR:OH	2.45	0.64
1:A:405:ALA:O	1:A:409:ARG:HG3	1.98	0.64
1:B:166:GLU:HG2	1:B:167:CYS:H	1.60	0.64
1:B:393:GLN:OE1	1:B:397:LEU:HD12	1.97	0.64
1:B:400:TYR:HE2	1:B:521:GLN:CG	2.10	0.64
1:A:390:ASN:HA	1:A:393:GLN:HB3	1.78	0.64
1:A:542:GLN:O	1:A:546:VAL:N	2.25	0.64
1:B:117:PRO:CB	1:B:122:LEU:HD11	2.27	0.64
1:B:407:ILE:CD1	1:B:525:GLN:HB3	2.27	0.64
1:A:225:ALA:O	1:A:331:TYR:OH	2.10	0.64
1:B:573:LYS:HE3	4:B:725:HOH:O	1.95	0.64
1:A:239:LYS:NZ	1:A:243:GLU:OE2	2.20	0.64
1:A:376:LEU:O	1:A:378:HIS:N	2.31	0.64
1:A:493:ASP:HB3	1:A:495:THR:OG1	1.97	0.64
1:A:511:ASP:HA	1:A:514:THR:CG2	2.28	0.64
1:B:579:GLN:CA	1:B:582:LEU:HD23	2.11	0.64
1:B:31:LEU:HD11	1:B:74:LEU:HD22	1.79	0.64
1:B:566:CYS:O	1:B:570:GLU:N	2.24	0.64
1:B:573:LYS:HE2	4:B:726:HOH:O	1.98	0.64

Continued on next page...

Continued from previous page...

Atom-1	Atom-2	Interatomic distance (Å)	Clash overlap (Å)
1:B:79:SER:O	1:B:82:GLU:HG2	1.96	0.64
1:B:503:GLU:OE2	1:B:503:GLU:N	2.23	0.63
1:A:161:ASN:O	1:A:165:GLN:N	2.31	0.63
1:A:35:PRO:HG2	1:A:38:GLU:OE1	1.98	0.63
1:A:425:VAL:HG12	1:A:429:LEU:CD1	2.27	0.63
1:B:360:CYS:HA	1:B:365:PRO:HB3	1.79	0.63
1:B:171:GLU:CG	1:B:172:ASP:H	2.11	0.63
1:B:484:ARG:HB3	1:B:485:PRO:HD3	1.81	0.63
1:B:544:LYS:H	1:B:544:LYS:CE	2.11	0.63
1:A:471:LYS:NZ	1:A:493:ASP:OD2	2.27	0.63
1:A:521:GLN:O	1:A:525:GLN:HG3	1.98	0.63
1:B:387:ILE:HD13	1:B:445:MET:HA	1.79	0.63
1:A:574:LEU:O	1:A:578:THR:OG1	2.14	0.63
1:B:547:MET:O	1:B:551:VAL:HG22	1.99	0.62
1:A:465:LYS:O	1:A:467:PRO:HD3	1.98	0.62
1:A:521:GLN:O	1:A:525:GLN:N	2.25	0.62
1:B:541:GLU:O	1:B:544:LYS:HG2	1.99	0.62
1:B:334:SER:OG	1:B:345:LEU:HD23	1.99	0.62
1:B:473:THR:O	1:B:477:THR:HG22	1.98	0.62
1:B:79:SER:HA	1:B:82:GLU:CD	2.20	0.62
1:A:36:PHE:O	1:A:40:VAL:HG23	2.00	0.62
1:B:463:HIS:HE1	1:B:473:THR:HG23	1.64	0.62
1:B:309:ALA:O	1:B:369:TYR:HE1	1.82	0.62
1:B:40:VAL:O	1:B:44:ASN:ND2	2.33	0.62
1:B:572:PRO:O	1:B:576:VAL:HG23	1.99	0.62
1:B:20:LYS:NZ	1:B:44:ASN:OD1	2.33	0.61
1:B:417:VAL:HG12	1:B:422:LEU:HG	1.82	0.61
1:A:45:GLU:H	1:A:45:GLU:CD	2.02	0.61
1:B:213:TRP:O	1:B:214:SER:CB	2.48	0.61
1:B:276:GLU:O	1:B:280:LYS:NZ	2.31	0.61
1:B:340:TYR:HB3	1:B:345:LEU:HD11	1.82	0.61
1:A:393:GLN:NE2	1:A:396:LYS:HE3	2.15	0.61
1:B:192:SER:O	4:B:701:HOH:O	2.16	0.61
1:B:412:ARG:HB3	1:B:492:PRO:CG	2.30	0.61
1:A:484:ARG:HB3	1:A:485:PRO:HD3	1.83	0.61
1:B:340:TYR:HB2	1:B:345:LEU:HD11	1.82	0.61
1:A:279:ASP:N	1:A:279:ASP:OD1	2.34	0.61
1:A:393:GLN:O	1:A:396:LYS:HG2	2.00	0.61
1:B:378:HIS:O	1:B:382:GLU:HG3	2.00	0.61
1:A:546:VAL:HA	1:A:549:ASN:OD1	2.01	0.61
1:B:305:THR:HG22	1:B:373:PHE:HD2	1.63	0.61

Continued on next page...

Continued from previous page...

Atom-1	Atom-2	Interatomic distance (Å)	Clash overlap (Å)
1:A:391:CYS:HA	1:A:394:PHE:HB3	1.82	0.61
1:A:572:PRO:O	1:A:576:VAL:HG13	2.00	0.61
1:B:546:VAL:CG1	1:B:578:THR:HG23	2.31	0.61
1:A:384:GLN:O	1:A:388:LYS:HG2	2.00	0.60
1:A:408:VAL:HA	1:A:532:LEU:HD13	1.82	0.60
1:A:574:LEU:H	1:A:574:LEU:HD22	1.66	0.60
1:B:166:GLU:OE2	1:B:180:LYS:HE2	2.01	0.60
1:B:23:VAL:HG12	1:B:43:VAL:HG22	1.82	0.60
1:A:136:LYS:NZ	1:A:140:GLU:OE2	2.23	0.60
1:B:433:GLY:O	1:B:437:CYS:HB2	2.02	0.60
1:B:440:PRO:HD2	1:B:443:GLU:OE2	2.02	0.60
1:B:550:PHE:O	1:B:553:PHE:HB3	2.01	0.60
1:B:515:LEU:HD22	1:B:519:GLU:HG2	1.82	0.60
1:A:341:ALA:O	1:A:345:LEU:HD13	2.01	0.60
1:A:50:ALA:O	1:A:54:VAL:HG13	2.02	0.60
1:B:483:ARG:HD3	4:B:703:HOH:O	1.99	0.60
1:B:498:PRO:HB3	1:B:534:HIS:O	2.01	0.60
1:B:86:ASP:O	1:B:89:ASP:HB2	2.02	0.60
1:A:542:GLN:O	1:A:545:THR:HG22	2.02	0.60
1:B:576:VAL:O	1:B:580:THR:HG23	2.01	0.60
1:B:301:LEU:HD13	1:B:336:ARG:NE	2.17	0.60
1:A:53:CYS:O	1:A:57:GLU:HA	2.01	0.59
1:A:539:THR:HG23	1:A:542:GLN:HG2	1.83	0.59
1:B:301:LEU:HD13	1:B:336:ARG:HH21	1.67	0.59
1:B:409:ARG:O	1:B:412:ARG:HB2	2.02	0.59
1:A:571:GLY:HA2	1:A:574:LEU:CD2	2.31	0.59
1:A:68:THR:HG23	4:A:735:HOH:O	2.02	0.59
1:B:304:LEU:HB2	1:B:373:PHE:HE2	1.67	0.59
1:B:376:LEU:O	1:B:379:LEU:N	2.35	0.59
1:B:563:LYS:CE	1:B:563:LYS:H	2.14	0.59
1:B:79:SER:HA	1:B:82:GLU:OE2	2.02	0.59
1:A:106:LYS:HE3	1:A:146:PRO:O	2.03	0.59
1:B:552:ALA:HA	1:B:555:ASP:OD2	2.01	0.59
1:B:297:ILE:HD13	1:B:336:ARG:HA	1.84	0.59
1:B:340:TYR:HB3	1:B:345:LEU:CD1	2.32	0.59
1:B:408:VAL:CG1	1:B:532:LEU:HD11	2.22	0.59
1:A:167:CYS:CB	1:A:177:LEU:HD21	2.28	0.58
1:B:37:ASP:OD1	1:B:37:ASP:N	2.30	0.58
1:B:535:LYS:HE3	1:B:582:LEU:HD13	1.85	0.58
1:B:580:THR:OG1	1:B:581:ALA:N	2.36	0.58
1:B:505:LEU:HD13	1:B:530:GLU:HG3	1.84	0.58

Continued on next page...

Continued from previous page...

Atom-1	Atom-2	Interatomic distance (Å)	Clash overlap (Å)
1:A:419:THR:OG1	1:A:533:LYS:NZ	2.24	0.58
1:B:505:LEU:HD13	1:B:530:GLU:CG	2.34	0.58
1:B:239:LYS:NZ	1:B:243:GLU:OE1	2.23	0.58
1:B:166:GLU:HG2	1:B:167:CYS:N	2.19	0.57
1:B:327:GLY:O	1:B:331:TYR:N	2.32	0.57
1:A:380:VAL:O	1:A:384:GLN:NE2	2.37	0.57
1:B:217:ARG:NH2	1:B:221:LYS:HE2	2.19	0.57
1:A:363:ASP:OD1	1:A:363:ASP:N	2.29	0.57
1:A:419:THR:HB	1:A:420:PRO:HD3	1.85	0.57
1:A:378:HIS:NE2	1:A:379:LEU:HD23	2.18	0.57
1:A:164:PHE:CZ	1:A:181:ILE:HD11	2.39	0.57
1:A:437:CYS:HA	1:A:444:ARG:CD	2.34	0.57
1:B:517:ASP:O	1:B:520:LYS:HB2	2.04	0.57
1:B:524:LYS:HZ3	1:B:547:MET:CE	2.17	0.57
1:A:437:CYS:HA	1:A:444:ARG:HD2	1.87	0.57
1:B:463:HIS:CE1	1:B:472:VAL:CG2	2.88	0.57
1:B:501:PHE:HB2	1:B:534:HIS:CE1	2.40	0.57
1:A:220:GLN:O	1:A:223:PRO:HD3	2.04	0.56
1:B:314:VAL:HG13	1:B:369:TYR:OH	2.05	0.56
1:B:3:HIS:HB3	1:B:57:GLU:OE1	2.05	0.56
1:B:352:TYR:HE1	1:B:356:LEU:HD11	1.70	0.56
1:B:108:ASP:H	1:B:465:LYS:HZ3	1.53	0.56
1:B:275:LYS:NZ	1:B:275:LYS:HB2	2.21	0.56
1:B:540:GLU:O	1:B:544:LYS:HE2	2.05	0.56
1:B:86:ASP:OD1	1:B:86:ASP:N	2.37	0.56
1:B:221:LYS:NZ	1:B:292:VAL:O	2.24	0.56
1:B:44:ASN:O	1:B:48:GLU:HG2	2.06	0.56
1:B:524:LYS:NZ	1:B:547:MET:CE	2.68	0.56
1:B:540:GLU:C	1:B:544:LYS:HZ3	2.09	0.56
1:A:395:GLU:N	1:A:395:GLU:OE1	2.39	0.56
1:B:394:PHE:HB2	1:B:402:PHE:CE2	2.41	0.56
1:B:400:TYR:OH	1:B:524:LYS:HD3	2.06	0.56
1:A:437:CYS:O	1:A:444:ARG:NH2	2.39	0.56
1:A:564:GLU:N	1:A:564:GLU:OE2	2.39	0.56
1:B:314:VAL:CG2	1:B:369:TYR:HE2	2.05	0.56
1:A:498:PRO:HG3	1:A:536:PRO:CG	2.32	0.56
1:B:229:GLU:OE2	1:B:262:TYR:OH	2.17	0.56
1:B:369:TYR:HD1	1:B:369:TYR:O	1.88	0.56
1:B:304:LEU:HB2	1:B:373:PHE:CE2	2.41	0.55
1:A:539:THR:HG22	1:A:542:GLN:CD	2.27	0.55
1:B:178:LEU:N	1:B:179:PRO:HD2	2.22	0.55

Continued on next page...

Continued from previous page...

Atom-1	Atom-2	Interatomic distance (Å)	Clash overlap (Å)
1:B:574:LEU:O	1:B:574:LEU:HD12	2.07	0.55
1:B:197:LEU:HA	1:B:457:ASN:ND2	2.21	0.55
1:B:565:ALA:O	1:B:568:ALA:HB3	2.06	0.55
1:A:25:ILE:HD11	1:A:138:LEU:HD22	1.88	0.55
1:A:512:ILE:HA	1:A:515:LEU:HD22	1.89	0.55
1:B:543:LEU:HA	1:B:546:VAL:CG2	2.35	0.55
1:A:391:CYS:O	1:A:394:PHE:HB3	2.07	0.55
1:B:167:CYS:CB	1:B:177:LEU:HD13	2.37	0.55
1:A:337:HIS:ND1	1:A:339:GLU:OE2	2.26	0.55
1:B:419:THR:HA	1:B:422:LEU:HD12	1.89	0.54
1:A:386:LEU:O	1:A:390:ASN:ND2	2.39	0.54
1:B:569:VAL:C	1:B:572:PRO:HD2	2.27	0.54
1:A:339:GLU:HG2	1:A:340:TYR:CD1	2.41	0.54
1:A:539:THR:HG22	1:A:542:GLN:NE2	2.23	0.54
1:B:179:PRO:O	1:B:183:THR:HG23	2.07	0.54
1:A:518:THR:HG23	1:A:519:GLU:N	2.22	0.54
1:B:498:PRO:HG3	1:B:536:PRO:CD	2.37	0.54
1:B:543:LEU:CA	1:B:546:VAL:HG23	2.37	0.54
1:A:396:LYS:HG3	1:A:397:LEU:HD22	1.90	0.54
1:A:445:MET:N	1:A:446:PRO:HD2	2.22	0.54
1:A:44:ASN:O	1:A:48:GLU:N	2.33	0.54
1:A:531:LEU:O	1:A:535:LYS:N	2.31	0.54
1:B:554:VAL:O	1:B:558:CYS:N	2.41	0.54
1:A:419:THR:HG21	1:A:526:THR:HG23	1.89	0.54
1:A:6:GLU:HG2	1:A:66:LEU:HG	1.89	0.54
1:B:152:GLU:OE1	1:B:287:HIS:ND1	2.39	0.54
1:A:251:GLU:HB2	4:A:732:HOH:O	2.08	0.54
1:A:217:ARG:HG2	1:A:342:VAL:HG11	1.89	0.54
1:B:363:ASP:C	1:B:365:PRO:HD3	2.28	0.54
1:B:414:VAL:HG11	1:B:472:VAL:HG13	1.89	0.54
1:B:463:HIS:CE1	1:B:473:THR:HG23	2.42	0.54
1:A:437:CYS:HA	1:A:444:ARG:NE	2.22	0.54
1:A:503:GLU:OE1	1:A:503:GLU:N	2.37	0.54
1:B:171:GLU:OE1	1:B:171:GLU:N	2.27	0.54
1:B:214:SER:O	1:B:218:LEU:HB2	2.07	0.54
1:B:525:GLN:O	1:B:529:VAL:HG23	2.08	0.54
1:A:340:TYR:HB3	1:A:345:LEU:CD1	2.38	0.54
1:A:164:PHE:O	1:A:168:CYS:HB2	2.07	0.53
1:A:360:CYS:HA	1:A:365:PRO:HB3	1.90	0.53
1:B:298:PRO:HG2	1:B:301:LEU:HD23	1.87	0.53
1:B:379:LEU:HD23	1:B:382:GLU:OE2	2.09	0.53

Continued on next page...

Continued from previous page...

Atom-1	Atom-2	Interatomic distance (Å)	Clash overlap (Å)
1:B:479:SER:OG	1:B:482:ASN:HB2	2.08	0.53
1:A:230:VAL:O	1:A:234:VAL:HG23	2.09	0.53
1:A:66:LEU:N	4:A:702:HOH:O	2.32	0.53
1:B:419:THR:HB	1:B:420:PRO:HD3	1.89	0.53
1:A:170:ALA:O	1:A:173:LYS:NZ	2.42	0.53
1:B:322:LYS:HG3	1:B:323:ASP:H	1.74	0.53
1:B:484:ARG:HH11	1:B:484:ARG:HG2	1.74	0.53
1:B:512:ILE:HA	1:B:515:LEU:HD12	1.89	0.53
1:B:117:PRO:HB2	1:B:122:LEU:HD11	1.90	0.53
1:B:419:THR:O	1:B:423:VAL:HG23	2.08	0.53
1:A:570:GLU:O	1:A:573:LYS:HB2	2.09	0.53
1:B:6:GLU:O	1:B:10:ARG:HG2	2.09	0.53
1:A:66:LEU:HD13	1:A:250:LEU:HD12	1.90	0.53
1:B:511:ASP:HA	1:B:514:THR:CG2	2.38	0.53
1:A:257:ALA:O	1:A:261:LYS:HG3	2.09	0.53
1:A:51:LYS:O	1:A:54:VAL:HG22	2.08	0.53
1:B:335:ARG:HD3	1:B:336:ARG:NH1	2.23	0.53
1:B:540:GLU:O	1:B:544:LYS:CE	2.57	0.53
1:B:582:LEU:HD12	1:B:583:ALA:OXT	2.09	0.53
1:B:26:ALA:HB2	1:B:249:LEU:HD12	1.90	0.53
1:B:6:GLU:OE2	1:B:66:LEU:HD12	2.09	0.53
1:A:526:THR:O	1:A:529:VAL:HB	2.09	0.52
1:B:227:PHE:HB2	1:B:331:TYR:CE2	2.43	0.52
1:B:463:HIS:HE1	1:B:473:THR:CG2	2.22	0.52
1:A:393:GLN:HE21	1:A:397:LEU:HD23	1.74	0.52
1:A:6:GLU:CG	1:A:66:LEU:HG	2.40	0.52
1:B:528:LEU:O	1:B:531:LEU:HD22	2.08	0.52
1:B:531:LEU:HD23	1:B:532:LEU:H	1.72	0.52
1:A:86:ASP:OD1	1:A:86:ASP:N	2.42	0.52
1:B:555:ASP:OD1	1:B:555:ASP:N	2.39	0.52
1:A:409:ARG:O	1:A:413:LYS:HG3	2.09	0.52
1:A:425:VAL:O	1:A:429:LEU:HD12	2.09	0.52
1:B:308:PHE:HB3	1:B:352:TYR:OH	2.09	0.52
1:B:518:THR:HA	1:B:521:GLN:OE1	2.09	0.52
1:A:31:LEU:HD11	1:A:74:LEU:HD22	1.91	0.52
1:B:280:LYS:HB3	1:B:281:PRO:CD	2.39	0.52
1:A:553:PHE:CD2	1:A:574:LEU:HD21	2.45	0.52
1:B:213:TRP:O	1:B:214:SER:HB2	2.08	0.52
1:B:315:CYS:O	1:B:319:GLN:HG3	2.10	0.52
1:B:417:VAL:CG1	1:B:422:LEU:HG	2.40	0.52
1:B:205:PHE:HE2	1:B:479:SER:HA	1.73	0.52

Continued on next page...

Continued from previous page...

Atom-1	Atom-2	Interatomic distance (Å)	Clash overlap (Å)
1:B:518:THR:HG23	1:B:519:GLU:N	2.25	0.52
1:B:458:ARG:HA	1:B:461:VAL:HG22	1.91	0.52
1:B:136:LYS:NZ	1:B:140:GLU:OE2	2.29	0.52
1:A:429:LEU:O	1:A:432:VAL:HG22	2.10	0.51
1:B:563:LYS:HE3	1:B:563:LYS:H	1.74	0.51
1:A:220:GLN:NE2	1:A:342:VAL:HG12	2.25	0.51
1:A:10:ARG:HG3	1:A:66:LEU:HD11	1.93	0.51
1:A:557:CYS:HB3	1:A:567:PHE:CE2	2.46	0.51
1:B:322:LYS:HG3	1:B:323:ASP:N	2.25	0.51
1:B:491:THR:CG2	1:B:492:PRO:HD2	2.41	0.51
1:A:573:LYS:O	1:A:576:VAL:HG22	2.10	0.51
1:A:579:GLN:CG	1:A:582:LEU:HD23	2.41	0.51
1:A:582:LEU:HD12	1:A:583:ALA:OXT	2.11	0.51
1:B:297:ILE:HG23	1:B:298:PRO:HD2	1.92	0.51
1:A:131:LYS:NZ	4:A:707:HOH:O	2.28	0.51
1:A:391:CYS:CA	1:A:394:PHE:HB3	2.41	0.51
1:B:117:PRO:HB2	1:B:122:LEU:CD1	2.40	0.51
1:B:81:ARG:HB2	1:B:88:ALA:CB	2.41	0.51
1:B:331:TYR:O	1:B:335:ARG:HG2	2.11	0.51
1:A:11:PHE:CZ	1:A:16:GLU:HB2	2.46	0.51
1:A:501:PHE:HB2	1:A:534:HIS:CE1	2.46	0.51
1:A:226:GLU:OE1	4:A:705:HOH:O	2.19	0.50
1:A:574:LEU:N	1:A:574:LEU:HD13	2.26	0.50
1:B:232:LYS:NZ	1:B:236:ASP:OD2	2.31	0.50
1:B:562:ASP:CB	1:B:566:CYS:HB3	2.39	0.50
1:A:512:ILE:O	1:A:520:LYS:HE3	2.11	0.50
1:A:542:GLN:O	1:A:545:THR:N	2.44	0.50
1:B:271:SER:HB3	1:B:274:LEU:HG	1.93	0.50
1:B:366:HIS:O	1:B:370:SER:OG	2.30	0.50
1:B:411:THR:HG21	1:B:532:LEU:HB2	1.93	0.50
1:A:546:VAL:HG13	1:A:578:THR:CG2	2.41	0.50
1:A:7:ILE:HG13	1:A:66:LEU:HD21	1.92	0.50
1:B:483:ARG:HD2	4:B:703:HOH:O	2.07	0.50
1:B:400:TYR:HE2	1:B:521:GLN:HB3	1.76	0.50
1:A:497:VAL:HG23	1:A:497:VAL:O	2.12	0.50
1:A:241:HIS:CE1	2:A:601:JGE:O18	2.64	0.50
1:B:167:CYS:SG	1:B:177:LEU:HD13	2.51	0.50
1:B:375:LYS:O	1:B:378:HIS:HB2	2.12	0.50
1:A:117:PRO:HB3	1:A:122:LEU:HD11	1.94	0.50
1:B:491:THR:HG23	1:B:492:PRO:HD2	1.92	0.50
1:A:66:LEU:HD12	4:A:732:HOH:O	2.11	0.50

Continued on next page...

Continued from previous page...

Atom-1	Atom-2	Interatomic distance (Å)	Clash overlap (Å)
1:B:539:THR:OG1	1:B:542:GLN:HG3	2.11	0.50
1:A:482:ASN:C	1:A:485:PRO:HD2	2.31	0.50
1:A:208:ARG:NH1	1:A:323:ASP:OD1	2.45	0.50
1:A:393:GLN:CD	1:A:396:LYS:HE3	2.32	0.50
1:B:167:CYS:HB3	1:B:177:LEU:HD13	1.92	0.50
1:A:340:TYR:CB	1:A:345:LEU:CD1	2.90	0.49
1:B:369:TYR:C	1:B:369:TYR:CD1	2.86	0.49
1:B:579:GLN:O	1:B:582:LEU:HG	2.12	0.49
1:B:511:ASP:N	1:B:511:ASP:OD1	2.44	0.49
1:A:419:THR:HG23	1:A:529:VAL:HG11	1.93	0.49
1:B:400:TYR:HE2	1:B:521:GLN:CB	2.26	0.49
1:B:562:ASP:HA	1:B:565:ALA:H	1.77	0.49
1:B:546:VAL:HG13	1:B:578:THR:HG23	1.93	0.49
1:B:67:HIS:CE1	4:B:712:HOH:O	2.64	0.49
1:B:177:LEU:C	1:B:179:PRO:HD2	2.32	0.49
1:B:466:THR:O	1:B:466:THR:HG23	2.11	0.49
1:B:245:CYS:HA	4:B:722:HOH:O	2.11	0.49
1:B:385:ASN:OD1	1:B:386:LEU:N	2.46	0.49
1:B:409:ARG:HA	1:B:412:ARG:HD3	1.94	0.49
1:A:39:HIS:O	1:A:43:VAL:HG23	2.13	0.49
1:B:458:ARG:HA	1:B:461:VAL:CG2	2.43	0.49
1:A:421:THR:O	1:A:425:VAL:HG23	2.13	0.49
1:A:473:THR:O	1:A:477:THR:HB	2.12	0.49
1:A:498:PRO:CG	1:A:536:PRO:HG2	2.36	0.49
1:A:4:LYS:O	1:A:4:LYS:HG2	2.12	0.49
1:A:86:ASP:O	1:A:89:ASP:HB2	2.13	0.49
1:B:474:LYS:O	1:B:478:GLU:HB2	2.13	0.49
1:A:498:PRO:HB3	1:A:536:PRO:CD	2.43	0.48
1:B:352:TYR:CE1	1:B:356:LEU:HD11	2.48	0.48
1:B:445:MET:N	1:B:446:PRO:HD2	2.28	0.48
1:B:333:TYR:HD1	1:B:333:TYR:O	1.95	0.48
1:A:399:GLU:O	1:A:402:PHE:N	2.46	0.48
1:B:352:TYR:O	1:B:356:LEU:HG	2.14	0.48
1:A:302:PRO:O	1:A:336:ARG:NH1	2.46	0.48
1:A:546:VAL:HG13	1:A:578:THR:HG21	1.95	0.48
1:B:562:ASP:HA	1:B:565:ALA:N	2.28	0.48
1:B:163:VAL:O	1:B:167:CYS:HB2	2.14	0.48
1:B:546:VAL:HG11	1:B:578:THR:HG23	1.95	0.48
1:B:544:LYS:O	1:B:548:GLU:HG3	2.14	0.48
1:A:178:LEU:HD13	1:A:178:LEU:C	2.33	0.48
1:B:108:ASP:H	1:B:465:LYS:HZ1	1.59	0.48

Continued on next page...

Continued from previous page...

Atom-1	Atom-2	Interatomic distance (Å)	Clash overlap (Å)
1:B:531:LEU:CD2	1:B:532:LEU:HG	2.44	0.48
1:B:379:LEU:HA	1:B:382:GLU:OE1	2.14	0.47
1:B:513:CYS:HA	1:B:520:LYS:NZ	2.29	0.47
1:B:301:LEU:HD22	1:B:336:ARG:NH2	2.28	0.47
1:B:562:ASP:HA	1:B:563:LYS:C	2.33	0.47
1:A:118:ASP:HB3	1:A:121:THR:HG21	1.92	0.47
1:A:292:VAL:HG22	1:A:293:GLU:N	2.28	0.47
1:A:535:LYS:HE3	1:A:582:LEU:HB2	1.95	0.47
1:B:150:ALA:HB3	1:B:151:PRO:HD3	1.97	0.47
1:B:563:LYS:HE2	1:B:563:LYS:H	1.79	0.47
1:A:542:GLN:O	1:A:546:VAL:HG23	2.14	0.47
1:B:330:LEU:HA	1:B:330:LEU:HD12	1.64	0.47
1:B:163:VAL:HG12	1:B:177:LEU:CD1	2.45	0.47
1:B:484:ARG:NH2	1:B:485:PRO:HA	2.30	0.47
1:A:448:THR:O	1:A:452:LEU:HG	2.15	0.47
1:B:123:CYS:O	1:B:127:LYS:HG2	2.15	0.47
1:B:33:GLN:O	1:B:33:GLN:HG2	2.15	0.47
1:B:45:GLU:O	1:B:48:GLU:HG3	2.15	0.47
1:B:582:LEU:HD12	1:B:583:ALA:N	2.29	0.47
1:B:202:ILE:CD1	1:B:210:LEU:HD22	2.37	0.47
1:B:535:LYS:CE	1:B:582:LEU:HD13	2.44	0.47
1:A:109:SER:OG	1:A:109:SER:O	2.33	0.47
1:A:277:CYS:C	1:A:279:ASP:H	2.17	0.47
1:A:231:THR:O	1:A:235:THR:HG23	2.15	0.47
1:A:87:MET:HG3	1:A:105:HIS:CG	2.50	0.47
1:A:107:ASP:O	1:A:110:PRO:HD3	2.15	0.47
1:A:391:CYS:C	1:A:394:PHE:HB3	2.36	0.47
1:B:399:GLU:OE2	1:B:403:GLN:NE2	2.47	0.47
1:A:301:LEU:N	1:A:301:LEU:HD12	2.30	0.46
1:B:25:ILE:HG12	1:B:153:LEU:HD23	1.96	0.46
1:B:282:LEU:O	1:B:282:LEU:HD12	2.15	0.46
1:A:428:SER:HB3	1:A:455:ILE:HD13	1.98	0.46
1:A:484:ARG:NH1	1:A:485:PRO:HA	2.30	0.46
1:B:428:SER:HB3	1:B:455:ILE:HD13	1.98	0.46
1:A:341:ALA:CB	1:A:446:PRO:HA	2.37	0.46
1:A:466:THR:O	1:A:466:THR:OG1	2.28	0.46
1:A:439:LYS:HB3	1:A:440:PRO:CD	2.41	0.46
1:A:149:TYR:OH	2:A:601:JGE:O18	2.25	0.46
1:B:171:GLU:HG2	1:B:172:ASP:N	2.29	0.46
1:A:315:CYS:O	1:A:319:GLN:HB2	2.15	0.46
1:B:292:VAL:HG22	1:B:293:GLU:N	2.30	0.46

Continued on next page...

Continued from previous page...

Atom-1	Atom-2	Interatomic distance (Å)	Clash overlap (Å)
1:B:524:LYS:HE2	1:B:547:MET:SD	2.56	0.46
1:A:40:VAL:HG12	1:A:44:ASN:HD21	1.81	0.46
1:A:425:VAL:CG1	1:A:429:LEU:HD11	2.45	0.46
1:B:369:TYR:HD1	1:B:369:TYR:C	2.18	0.46
1:B:445:MET:CE	1:B:449:GLU:HG3	2.46	0.46
1:B:557:CYS:SG	1:B:570:GLU:HG3	2.56	0.46
1:A:458:ARG:NH2	1:A:462:LEU:HD21	2.31	0.46
1:A:269:THR:HG22	1:A:269:THR:O	2.16	0.46
1:B:40:VAL:HG12	1:B:44:ASN:HD21	1.81	0.46
1:A:318:TYR:CE2	1:A:322:LYS:HE2	2.50	0.46
1:B:230:VAL:O	1:B:234:VAL:HG23	2.16	0.46
1:B:554:VAL:HG13	1:B:558:CYS:CB	2.44	0.45
1:A:139:TYR:CZ	1:A:143:ARG:NH1	2.84	0.45
1:A:515:LEU:HD23	1:A:520:LYS:HA	1.98	0.45
1:B:582:LEU:HD12	1:B:582:LEU:C	2.36	0.45
1:B:80:LEU:CD1	1:B:87:MET:CE	2.94	0.45
1:A:8:ALA:CA	1:A:54:VAL:HG12	2.46	0.45
1:B:118:ASP:HA	1:B:119:PRO:HD2	1.75	0.45
1:B:566:CYS:SG	1:B:570:GLU:CG	2.94	0.45
1:A:471:LYS:HD3	1:A:490:LEU:HD22	1.97	0.45
1:A:530:GLU:OE1	1:A:530:GLU:HA	2.15	0.45
1:B:535:LYS:HE3	1:B:582:LEU:CD1	2.46	0.45
1:B:403:GLN:O	1:B:407:ILE:HG13	2.17	0.45
1:B:531:LEU:HD23	1:B:532:LEU:HG	1.99	0.45
1:B:30:TYR:CD2	1:B:70:PHE:HE2	2.35	0.45
1:A:511:ASP:CA	1:A:514:THR:HG22	2.45	0.45
1:A:577:SER:O	1:A:580:THR:OG1	2.35	0.45
1:B:171:GLU:CG	1:B:172:ASP:N	2.78	0.45
1:B:301:LEU:HD13	1:B:336:ARG:NH2	2.30	0.45
1:B:360:CYS:O	1:B:365:PRO:HG3	2.17	0.45
1:A:277:CYS:O	1:A:280:LYS:HG3	2.17	0.45
1:A:371:THR:O	1:A:374:ASP:HB2	2.17	0.45
1:A:488:SER:HA	4:A:708:HOH:O	2.16	0.45
1:B:277:CYS:C	1:B:279:ASP:H	2.19	0.45
1:B:27:PHE:CE1	1:B:70:PHE:CE1	3.05	0.45
1:B:301:LEU:HD22	1:B:336:ARG:HH21	1.82	0.45
1:B:463:HIS:CE1	1:B:473:THR:CG2	2.99	0.45
1:B:220:GLN:O	1:B:223:PRO:HD3	2.16	0.45
1:A:130:GLU:O	1:A:133:PHE:HB3	2.16	0.45
1:A:547:MET:O	1:A:550:PHE:HB3	2.16	0.45
1:B:539:THR:HG23	1:B:542:GLN:OE1	2.16	0.45

Continued on next page...

Continued from previous page...

Atom-1	Atom-2	Interatomic distance (Å)	Clash overlap (Å)
1:B:562:ASP:CG	1:B:566:CYS:HB3	2.38	0.45
1:A:408:VAL:HG12	1:A:532:LEU:CD1	2.38	0.45
1:B:369:TYR:O	1:B:369:TYR:CD1	2.70	0.45
1:B:421:THR:O	1:B:425:VAL:HG23	2.17	0.45
1:A:308:PHE:HB3	1:A:352:TYR:CE2	2.52	0.44
1:A:450:ASP:HB2	4:A:736:HOH:O	2.16	0.44
1:A:566:CYS:SG	1:A:567:PHE:N	2.89	0.44
1:B:480:LEU:HA	1:B:480:LEU:HD12	1.86	0.44
1:A:118:ASP:O	1:A:121:THR:HG23	2.17	0.44
1:A:465:LYS:HE2	1:A:465:LYS:HB3	1.39	0.44
1:A:178:LEU:HD13	1:A:179:PRO:N	2.33	0.44
1:A:282:LEU:O	1:A:282:LEU:HD12	2.18	0.44
1:A:437:CYS:HA	1:A:444:ARG:CZ	2.48	0.44
1:A:484:ARG:O	1:A:484:ARG:HD2	2.18	0.44
1:A:534:HIS:C	1:A:536:PRO:HD3	2.38	0.44
1:B:160:TYR:O	1:B:164:PHE:HD2	2.01	0.44
1:A:390:ASN:O	1:A:393:GLN:HB3	2.17	0.44
1:A:465:LYS:HE2	1:A:466:THR:HG23	1.98	0.44
1:B:24:LEU:HB2	1:B:43:VAL:HG21	1.98	0.44
1:B:373:PHE:O	1:B:377:LYS:HG2	2.16	0.44
1:B:409:ARG:NH1	1:B:409:ARG:HB3	2.33	0.44
1:A:173:LYS:O	1:A:176:CYS:N	2.49	0.44
1:A:368:CYS:O	1:A:371:THR:HG22	2.17	0.44
1:A:484:ARG:C	1:A:484:ARG:HD2	2.38	0.44
1:B:425:VAL:HG21	1:B:459:LEU:HD13	2.00	0.44
1:B:566:CYS:C	1:B:570:GLU:HG2	2.38	0.44
1:A:376:LEU:C	1:A:378:HIS:N	2.71	0.44
1:A:388:LYS:HA	1:A:392:ASP:OD2	2.18	0.44
1:A:498:PRO:HB3	1:A:536:PRO:HD3	2.00	0.44
1:B:227:PHE:HD1	1:B:331:TYR:CG	2.36	0.43
1:B:344:VAL:O	1:B:348:LEU:HG	2.18	0.43
1:B:465:LYS:O	1:B:467:PRO:HD3	2.18	0.43
1:B:471:LYS:HZ2	1:B:490:LEU:CD2	2.31	0.43
1:A:406:LEU:HD13	1:A:429:LEU:HB2	1.99	0.43
1:A:519:GLU:O	1:A:522:ILE:HG12	2.18	0.43
1:B:379:LEU:HA	1:B:382:GLU:CD	2.39	0.43
1:B:573:LYS:HG2	1:B:574:LEU:N	2.33	0.43
1:A:419:THR:O	1:A:423:VAL:HG23	2.18	0.43
1:B:363:ASP:O	1:B:365:PRO:HD3	2.18	0.43
1:B:463:HIS:CE1	1:B:472:VAL:HG23	2.53	0.43
1:A:178:LEU:O	1:A:178:LEU:HD22	2.18	0.43

Continued on next page...

Continued from previous page...

Atom-1	Atom-2	Interatomic distance (Å)	Clash overlap (Å)
1:A:139:TYR:O	1:A:143:ARG:HG2	2.17	0.43
1:A:518:THR:O	1:A:521:GLN:N	2.52	0.43
1:A:126:PHE:CZ	1:A:165:GLN:HA	2.53	0.43
1:A:400:TYR:CD2	1:A:521:GLN:NE2	2.84	0.43
1:B:163:VAL:HG12	1:B:177:LEU:HD11	1.99	0.43
1:B:472:VAL:HG23	1:B:473:THR:N	2.33	0.43
1:B:382:GLU:N	1:B:383:PRO:CD	2.81	0.43
1:B:441:GLU:HA	1:B:444:ARG:HG3	2.01	0.43
1:A:25:ILE:HG12	1:A:153:LEU:HD23	2.01	0.43
1:B:405:ALA:O	1:B:409:ARG:HG3	2.18	0.43
1:B:535:LYS:HE3	1:B:582:LEU:CG	2.49	0.43
1:B:498:PRO:HB3	1:B:536:PRO:HD3	2.01	0.43
1:A:445:MET:O	1:A:449:GLU:HB2	2.18	0.43
1:B:130:GLU:O	1:B:133:PHE:HB3	2.18	0.43
1:A:87:MET:HG3	1:A:105:HIS:CB	2.49	0.42
1:B:248:ASP:HB3	4:B:714:HOH:O	2.19	0.42
1:A:398:GLY:O	1:A:402:PHE:HB2	2.19	0.42
1:A:518:THR:CG2	1:A:519:GLU:N	2.81	0.42
1:B:195:GLN:HA	1:B:195:GLN:OE1	2.19	0.42
1:B:329:PHE:CE2	1:B:349:ALA:HA	2.54	0.42
1:B:541:GLU:OE1	1:B:544:LYS:HD2	2.19	0.42
1:B:566:CYS:CA	1:B:570:GLU:HG2	2.50	0.42
1:B:566:CYS:O	1:B:570:GLU:HG2	2.19	0.42
1:B:385:ASN:OD1	1:B:386:LEU:HG	2.20	0.42
1:A:152:GLU:OE1	1:A:287:HIS:ND1	2.50	0.42
1:A:419:THR:N	1:A:420:PRO:CD	2.82	0.42
1:B:441:GLU:HA	1:B:444:ARG:CD	2.49	0.42
1:B:400:TYR:OH	1:B:524:LYS:CD	2.67	0.42
1:A:446:PRO:O	1:A:450:ASP:CB	2.68	0.42
1:A:419:THR:CG2	1:A:526:THR:HG23	2.49	0.42
1:B:155:TYR:O	1:B:158:ASN:HB2	2.19	0.42
1:B:34:CYS:HA	1:B:35:PRO:HD3	1.83	0.42
1:B:562:ASP:OD1	1:B:567:PHE:N	2.50	0.42
1:A:363:ASP:O	1:A:365:PRO:HD3	2.20	0.42
1:A:382:GLU:OE2	1:A:386:LEU:HD11	2.19	0.42
1:A:529:VAL:O	1:A:533:LYS:HG3	2.20	0.42
1:B:458:ARG:CA	1:B:461:VAL:HG22	2.49	0.42
1:B:377:LYS:H	1:B:377:LYS:HG2	1.61	0.42
1:B:556:LYS:HD3	1:B:570:GLU:OE1	2.20	0.42
1:A:237:LEU:HD11	1:A:241:HIS:NE2	2.35	0.42
1:A:582:LEU:HD12	1:A:582:LEU:C	2.40	0.42

Continued on next page...

Continued from previous page...

Atom-1	Atom-2	Interatomic distance (Å)	Clash overlap (Å)
1:B:210:LEU:O	1:B:213:TRP:O	2.38	0.42
1:A:223:PRO:HA	1:A:335:ARG:HB2	2.02	0.41
1:A:359:CYS:O	1:A:365:PRO:HB3	2.20	0.41
1:A:363:ASP:C	1:A:365:PRO:HD3	2.40	0.41
1:B:132:LYS:O	1:B:132:LYS:HG2	2.20	0.41
1:B:311:ASP:O	1:B:314:VAL:HG13	2.19	0.41
1:B:436:CYS:HB3	1:B:448:THR:HG23	2.03	0.41
1:B:573:LYS:HE3	4:B:726:HOH:O	2.14	0.41
1:A:45:GLU:CD	1:A:46:LEU:H	2.13	0.41
1:B:341:ALA:O	1:B:345:LEU:HD13	2.20	0.41
1:A:297:ILE:HD13	1:A:336:ARG:HA	2.01	0.41
1:A:294:LYS:HD2	1:A:338:PRO:HB3	2.02	0.41
1:B:167:CYS:HB3	1:B:177:LEU:HD22	2.02	0.41
1:B:329:PHE:HE2	1:B:349:ALA:HA	1.85	0.41
1:A:178:LEU:HB3	1:A:179:PRO:HD3	2.01	0.41
1:B:376:LEU:O	1:B:378:HIS:N	2.53	0.41
1:B:31:LEU:CD1	1:B:74:LEU:HD22	2.48	0.41
1:A:380:VAL:HG12	1:A:384:GLN:HE22	1.85	0.41
1:A:561:ASP:O	1:A:563:LYS:N	2.53	0.41
1:B:134:TRP:CD1	1:B:157:ALA:HB1	2.56	0.41
1:B:314:VAL:HG23	1:B:315:CYS:N	2.35	0.41
1:B:219:SER:OG	1:B:334:SER:HB2	2.21	0.41
1:B:528:LEU:O	1:B:528:LEU:HD12	2.20	0.41
1:A:389:GLN:O	1:A:389:GLN:HG2	2.21	0.41
1:B:419:THR:OG1	1:B:530:GLU:OE2	2.27	0.41
1:B:542:GLN:O	1:B:546:VAL:HG23	2.20	0.41
1:A:409:ARG:HB3	1:A:409:ARG:NH1	2.36	0.41
1:A:429:LEU:O	1:A:432:VAL:HG13	2.21	0.41
1:A:465:LYS:HE3	1:A:466:THR:HG22	1.97	0.41
1:B:440:PRO:O	1:B:443:GLU:HG3	2.21	0.41
1:B:553:PHE:CE2	1:B:571:GLY:HA2	2.56	0.41
1:A:31:LEU:HB2	1:A:39:HIS:CE1	2.56	0.41
1:B:489:ALA:O	1:B:490:LEU:HD12	2.21	0.41
1:B:87:MET:HG3	1:B:105:HIS:CG	2.56	0.41
1:A:351:GLU:O	1:A:355:THR:HG23	2.21	0.41
1:A:432:VAL:HA	1:A:435:ARG:HB2	2.03	0.41
1:A:582:LEU:HD12	1:A:583:ALA:N	2.35	0.41
1:B:178:LEU:N	1:B:179:PRO:CD	2.83	0.41
1:A:22:LEU:HG	1:A:154:LEU:HD11	2.03	0.41
1:A:464:GLU:H	1:A:464:GLU:HG2	1.66	0.41
1:A:400:TYR:HD2	1:A:521:GLN:NE2	2.19	0.41

Continued on next page...

Continued from previous page...

Atom-1	Atom-2	Interatomic distance (Å)	Clash overlap (Å)
1:B:546:VAL:O	1:B:550:PHE:HB2	2.21	0.41
1:A:38:GLU:O	1:A:41:LYS:HB2	2.21	0.40
1:A:571:GLY:O	1:A:574:LEU:HD22	2.21	0.40
1:B:407:ILE:HG12	1:B:426:SER:CB	2.51	0.40
1:A:390:ASN:O	1:A:394:PHE:N	2.36	0.40
1:A:443:GLU:OE1	1:A:443:GLU:HA	2.21	0.40
1:A:501:PHE:HB2	1:A:534:HIS:NE2	2.37	0.40
1:B:136:LYS:HZ2	1:B:140:GLU:CG	2.35	0.40
1:B:22:LEU:HG	1:B:154:LEU:HD11	2.04	0.40
1:B:218:LEU:HA	1:B:218:LEU:HD23	1.90	0.40
1:B:335:ARG:HD3	1:B:336:ARG:HH12	1.86	0.40
1:A:397:LEU:HD13	1:A:397:LEU:HA	1.86	0.40
1:B:208:ARG:HA	1:B:211:LYS:HB2	2.03	0.40
1:A:314:VAL:CG2	1:A:315:CYS:N	2.85	0.40
1:B:222:PHE:CD1	1:B:271:SER:HB2	2.56	0.40
1:B:227:PHE:CD1	1:B:331:TYR:HB2	2.57	0.40
1:B:30:TYR:CD2	1:B:70:PHE:CE2	3.09	0.40

There are no symmetry-related clashes.

5.3 Torsion angles

5.3.1 Protein backbone

In the following table, the Percentiles column shows the percent Ramachandran outliers of the chain as a percentile score with respect to all X-ray entries followed by that with respect to entries of similar resolution.

The Analysed column shows the number of residues for which the backbone conformation was analysed, and the total number of residues.

Mol	Chain	Analysed	Favoured	Allowed	Outliers	Percentiles	
1	A	578/607 (95%)	550 (95%)	24 (4%)	4 (1%)	22	53
1	B	568/607 (94%)	541 (95%)	24 (4%)	3 (0%)	29	61
All	All	1146/1214 (94%)	1091 (95%)	48 (4%)	7 (1%)	25	56

All (7) Ramachandran outliers are listed below:

Mol	Chain	Res	Type
1	B	214	SER

Continued on next page...

Continued from previous page...

Mol	Chain	Res	Type
1	B	299	GLU
1	A	377	LYS
1	A	562	ASP
1	B	167	CYS
1	A	299	GLU
1	A	561	ASP

5.3.2 Protein sidechains ⓘ

In the following table, the Percentiles column shows the percent sidechain outliers of the chain as a percentile score with respect to all X-ray entries followed by that with respect to entries of similar resolution.

The Analysed column shows the number of residues for which the sidechain conformation was analysed, and the total number of residues.

Mol	Chain	Analysed	Rotameric	Outliers	Percentiles	
1	A	517/542 (95%)	473 (92%)	44 (8%)	10	31
1	B	515/542 (95%)	466 (90%)	49 (10%)	8	25
All	All	1032/1084 (95%)	939 (91%)	93 (9%)	9	28

All (93) residues with a non-rotameric sidechain are listed below:

Mol	Chain	Res	Type
1	A	6	GLU
1	A	45	GLU
1	A	53	CYS
1	A	58	SER
1	A	73	GLU
1	A	82	GLU
1	A	86	ASP
1	A	121	THR
1	A	127	LYS
1	A	167	CYS
1	A	168	CYS
1	A	178	LEU
1	A	208	ARG
1	A	217	ARG
1	A	228	VAL
1	A	231	THR
1	A	235	THR

Continued on next page...

Continued from previous page...

Mol	Chain	Res	Type
1	A	246	HIS
1	A	312	LYS
1	A	319	GLN
1	A	333	TYR
1	A	358	GLU
1	A	363	ASP
1	A	376	LEU
1	A	378	HIS
1	A	390	ASN
1	A	392	ASP
1	A	414	VAL
1	A	434	THR
1	A	445	MET
1	A	464	GLU
1	A	465	LYS
1	A	491	THR
1	A	515	LEU
1	A	522	ILE
1	A	528	LEU
1	A	540	GLU
1	A	545	THR
1	A	549	ASN
1	A	555	ASP
1	A	561	ASP
1	A	574	LEU
1	A	575	VAL
1	A	580	THR
1	B	18	HIS
1	B	37	ASP
1	B	45	GLU
1	B	48	GLU
1	B	73	GLU
1	B	79	SER
1	B	86	ASP
1	B	121	THR
1	B	131	LYS
1	B	132	LYS
1	B	159	LYS
1	B	171	GLU
1	B	177	LEU
1	B	228	VAL
1	B	269	THR

Continued on next page...

Continued from previous page...

Mol	Chain	Res	Type
1	B	275	LYS
1	B	301	LEU
1	B	307	ASP
1	B	313	ASP
1	B	333	TYR
1	B	335	ARG
1	B	336	ARG
1	B	343	SER
1	B	363	ASP
1	B	369	TYR
1	B	378	HIS
1	B	381	ASP
1	B	384	GLN
1	B	393	GLN
1	B	396	LYS
1	B	414	VAL
1	B	432	VAL
1	B	434	THR
1	B	438	THR
1	B	478	GLU
1	B	490	LEU
1	B	497	VAL
1	B	507	THR
1	B	511	ASP
1	B	531	LEU
1	B	542	GLN
1	B	544	LYS
1	B	545	THR
1	B	546	VAL
1	B	547	MET
1	B	562	ASP
1	B	563	LYS
1	B	566	CYS
1	B	577	SER

Some sidechains can be flipped to improve hydrogen bonding and reduce clashes. All (4) such sidechains are listed below:

Mol	Chain	Res	Type
1	A	59	HIS
1	A	246	HIS
1	A	393	GLN
1	B	67	HIS

5.3.3 RNA ⓘ

There are no RNA molecules in this entry.

5.4 Non-standard residues in protein, DNA, RNA chains ⓘ

There are no non-standard protein/DNA/RNA residues in this entry.

5.5 Carbohydrates ⓘ

There are no carbohydrates in this entry.

5.6 Ligand geometry ⓘ

Of 6 ligands modelled in this entry, 4 are monoatomic - leaving 2 for Mogul analysis.

In the following table, the Counts columns list the number of bonds (or angles) for which Mogul statistics could be retrieved, the number of bonds (or angles) that are observed in the model and the number of bonds (or angles) that are defined in the Chemical Component Dictionary. The Link column lists molecule types, if any, to which the group is linked. The Z score for a bond length (or angle) is the number of standard deviations the observed value is removed from the expected value. A bond length (or angle) with $|Z| > 2$ is considered an outlier worth inspection. RMSZ is the root-mean-square of all Z scores of the bond lengths (or angles).

Mol	Type	Chain	Res	Link	Bond lengths			Bond angles		
					Counts	RMSZ	# Z > 2	Counts	RMSZ	# Z > 2
2	JGE	A	601	-	17,20,20	1.23	3 (17%)	23,27,27	1.02	2 (8%)
2	JGE	B	601	-	17,20,20	1.12	3 (17%)	23,27,27	0.81	0

In the following table, the Chirals column lists the number of chiral outliers, the number of chiral centers analysed, the number of these observed in the model and the number defined in the Chemical Component Dictionary. Similar counts are reported in the Torsion and Rings columns. '-' means no outliers of that kind were identified.

Mol	Type	Chain	Res	Link	Chirals	Torsions	Rings
2	JGE	A	601	-	-	2/12/16/16	0/2/2/2
2	JGE	B	601	-	-	2/12/16/16	0/2/2/2

All (6) bond length outliers are listed below:

Mol	Chain	Res	Type	Atoms	Z	Observed(Å)	Ideal(Å)
2	A	601	JGE	C07-C09	3.04	1.54	1.49

Continued on next page...

Continued from previous page...

Mol	Chain	Res	Type	Atoms	Z	Observed(Å)	Ideal(Å)
2	A	601	JGE	C11-C09	2.62	1.53	1.49
2	B	601	JGE	O10-C09	-2.61	1.18	1.22
2	B	601	JGE	C07-C09	2.31	1.53	1.49
2	B	601	JGE	C11-C09	2.15	1.53	1.49
2	A	601	JGE	O10-C09	-2.04	1.19	1.22

All (2) bond angle outliers are listed below:

Mol	Chain	Res	Type	Atoms	Z	Observed(°)	Ideal(°)
2	A	601	JGE	C06-C07-C09	2.13	125.25	120.57
2	A	601	JGE	O10-C09-C11	-2.05	116.85	120.12

There are no chirality outliers.

All (4) torsion outliers are listed below:

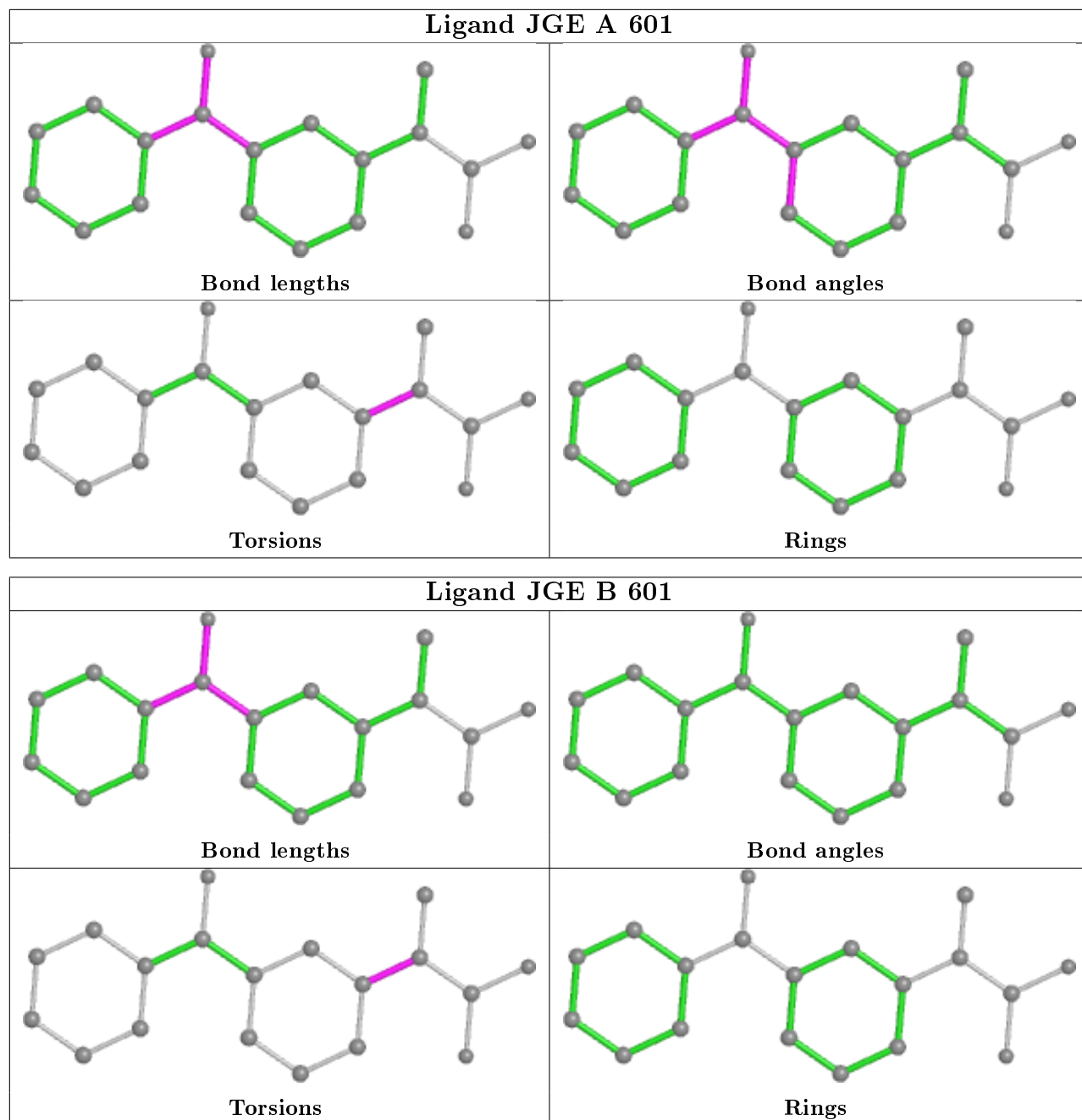
Mol	Chain	Res	Type	Atoms
2	B	601	JGE	C17-C02-C03-C04
2	B	601	JGE	C17-C02-C03-C08
2	A	601	JGE	C17-C02-C03-C04
2	A	601	JGE	C17-C02-C03-C08

There are no ring outliers.

1 monomer is involved in 2 short contacts:

Mol	Chain	Res	Type	Clashes	Symm-Clashes
2	A	601	JGE	2	0

The following is a two-dimensional graphical depiction of Mogul quality analysis of bond lengths, bond angles, torsion angles, and ring geometry for all instances of the Ligand of Interest. In addition, ligands with molecular weight > 250 and outliers as shown on the validation Tables will also be included. For torsion angles, if less than 5% of the Mogul distribution of torsion angles is within 10 degrees of the torsion angle in question, then that torsion angle is considered an outlier. Any bond that is central to one or more torsion angles identified as an outlier by Mogul will be highlighted in the graph. For rings, the root-mean-square deviation (RMSD) between the ring in question and similar rings identified by Mogul is calculated over all ring torsion angles. If the average RMSD is greater than 60 degrees and the minimal RMSD between the ring in question and any Mogul-identified rings is also greater than 60 degrees, then that ring is considered an outlier. The outliers are highlighted in purple. The color gray indicates Mogul did not find sufficient equivalents in the CSD to analyse the geometry.



5.7 Other polymers [i](#)

There are no such residues in this entry.

5.8 Polymer linkage issues [i](#)

There are no chain breaks in this entry.

6 Fit of model and data

6.1 Protein, DNA and RNA chains

In the following table, the column labelled ‘#RSRZ> 2’ contains the number (and percentage) of RSRZ outliers, followed by percent RSRZ outliers for the chain as percentile scores relative to all X-ray entries and entries of similar resolution. The OWAB column contains the minimum, median, 95th percentile and maximum values of the occupancy-weighted average B-factor per residue. The column labelled ‘Q< 0.9’ lists the number of (and percentage) of residues with an average occupancy less than 0.9.

Mol	Chain	Analysed	<RSRZ>	#RSRZ>2	OWAB(Å ²)	Q<0.9
1	A	580/607 (95%)	-0.21	7 (1%) 79 73	30, 60, 111, 125	0
1	B	576/607 (94%)	-0.06	16 (2%) 53 43	27, 69, 116, 142	0
All	All	1156/1214 (95%)	-0.14	23 (1%) 65 56	27, 64, 112, 142	0

All (23) RSRZ outliers are listed below:

Mol	Chain	Res	Type	RSRZ
1	B	314	VAL	5.3
1	B	368	CYS	4.0
1	B	396	LYS	3.7
1	B	315	CYS	3.5
1	A	441	GLU	3.4
1	B	318	TYR	3.1
1	B	304	LEU	3.1
1	B	326	LEU	2.9
1	B	369	TYR	2.8
1	B	359	CYS	2.8
1	A	386	LEU	2.8
1	B	372	VAL	2.7
1	A	388	LYS	2.7
1	A	550	PHE	2.6
1	A	404	ASN	2.5
1	B	360	CYS	2.5
1	A	583	ALA	2.3
1	B	361	ALA	2.1
1	A	515	LEU	2.1
1	B	329	PHE	2.1
1	B	344	VAL	2.1
1	B	309	ALA	2.1
1	B	514	THR	2.1

6.2 Non-standard residues in protein, DNA, RNA chains [i](#)

There are no non-standard protein/DNA/RNA residues in this entry.

6.3 Carbohydrates [i](#)

There are no carbohydrates in this entry.

6.4 Ligands [i](#)

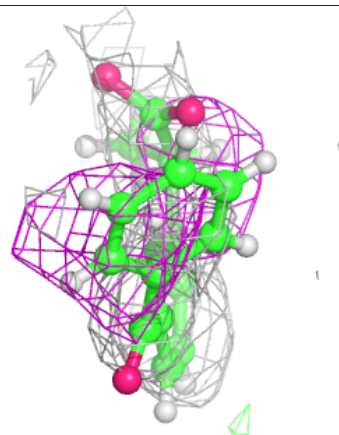
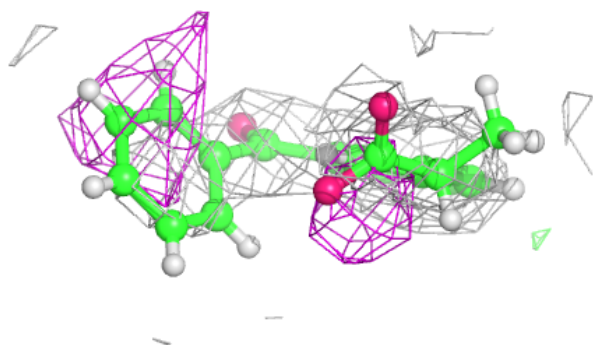
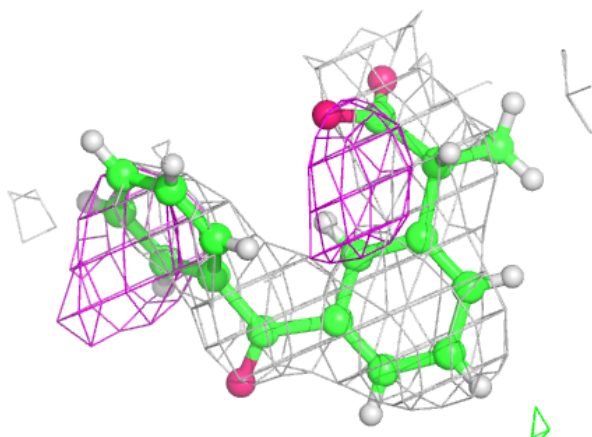
In the following table, the Atoms column lists the number of modelled atoms in the group and the number defined in the chemical component dictionary. The B-factors column lists the minimum, median, 95th percentile and maximum values of B factors of atoms in the group. The column labelled 'Q< 0.9' lists the number of atoms with occupancy less than 0.9.

Mol	Type	Chain	Res	Atoms	RSCC	RSR	B-factors(\AA^2)	Q<0.9
3	CA	B	603	1/1	0.80	0.09	76,76,76,76	0
3	CA	B	602	1/1	0.81	0.19	65,65,65,65	0
3	CA	A	603	1/1	0.82	0.11	91,91,91,91	0
2	JGE	A	601	19/19	0.89	0.53	44,54,65,66	0
3	CA	A	602	1/1	0.90	0.21	67,67,67,67	0
2	JGE	B	601	19/19	0.93	0.44	46,55,67,75	0

The following is a graphical depiction of the model fit to experimental electron density of all instances of the Ligand of Interest. In addition, ligands with molecular weight > 250 and outliers as shown on the geometry validation Tables will also be included. Each fit is shown from different orientation to approximate a three-dimensional view.

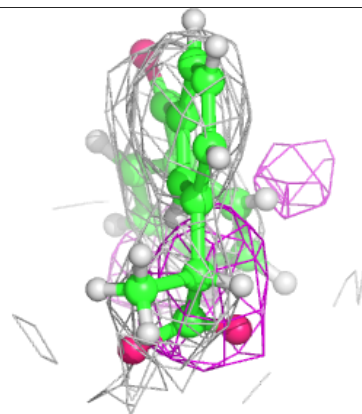
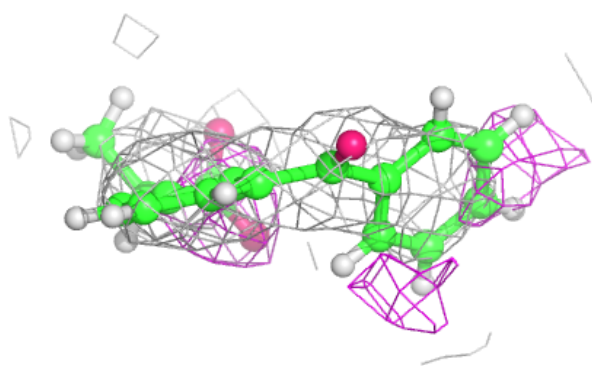
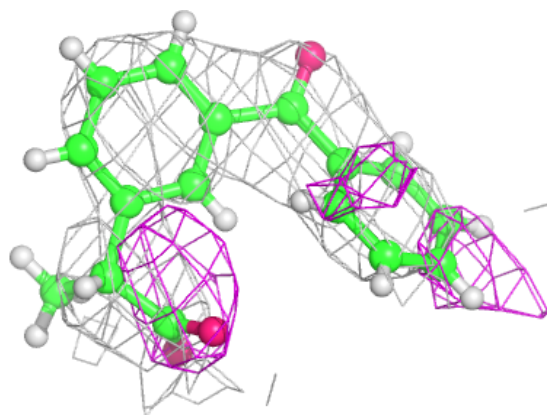
Electron density around JGE A 601:

$2mF_o-DF_c$ (at 0.7 rmsd) in gray
 mF_o-DF_c (at 3 rmsd) in purple (negative)
and green (positive)



Electron density around JGE B 601:

$2mF_o-DF_c$ (at 0.7 rmsd) in gray
 mF_o-DF_c (at 3 rmsd) in purple (negative)
and green (positive)



6.5 Other polymers ⓘ

There are no such residues in this entry.