



Full wwPDB X-ray Structure Validation Report ⓘ

Jul 28, 2021 – 05:16 PM EDT

PDB ID : 2QTA
Title : E. coli Pyruvate dehydrogenase E1 component E401K mutant with thiamin diphosphate
Authors : Furey, W.; Arjunan, P.; Chandrasekhar, K.
Deposited on : 2007-08-01
Resolution : 1.85 Å(reported)

This is a Full wwPDB X-ray Structure Validation Report for a publicly released PDB entry.

We welcome your comments at validation@mail.wwpdb.org

A user guide is available at

<https://www.wwpdb.org/validation/2017/XrayValidationReportHelp>

with specific help available everywhere you see the ⓘ symbol.

The following versions of software and data (see [references ⓘ](#)) were used in the production of this report:

MolProbity	:	4.02b-467
Mogul	:	1.8.5 (274361), CSD as541be (2020)
Xtriage (Phenix)	:	1.13
EDS	:	2.22
buster-report	:	1.1.7 (2018)
Percentile statistics	:	20191225.v01 (using entries in the PDB archive December 25th 2019)
Refmac	:	5.8.0158
CCP4	:	7.0.044 (Gargrove)
Ideal geometry (proteins)	:	Engh & Huber (2001)
Ideal geometry (DNA, RNA)	:	Parkinson et al. (1996)
Validation Pipeline (wwPDB-VP)	:	2.22

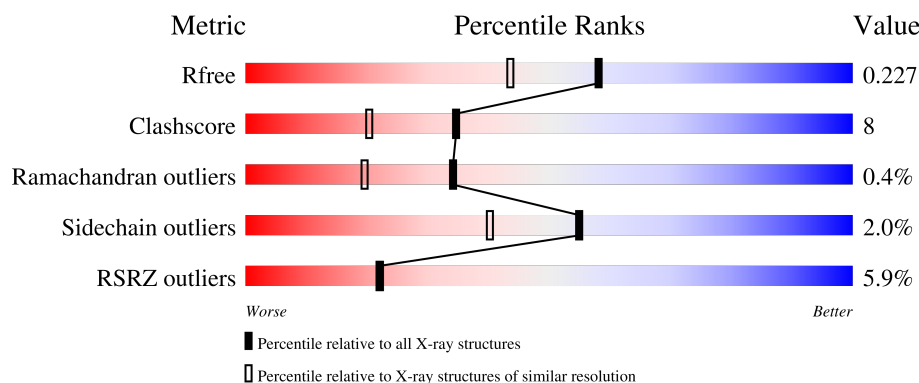
1 Overall quality at a glance

The following experimental techniques were used to determine the structure:

X-RAY DIFFRACTION

The reported resolution of this entry is 1.85 Å.

Percentile scores (ranging between 0-100) for global validation metrics of the entry are shown in the following graphic. The table shows the number of entries on which the scores are based.



Metric	Whole archive (#Entries)	Similar resolution (#Entries, resolution range(Å))
R_{free}	130704	2469 (1.86-1.86)
Clashscore	141614	2625 (1.86-1.86)
Ramachandran outliers	138981	2592 (1.86-1.86)
Sidechain outliers	138945	2592 (1.86-1.86)
RSRZ outliers	127900	2436 (1.86-1.86)

The table below summarises the geometric issues observed across the polymeric chains and their fit to the electron density. The red, orange, yellow and green segments of the lower bar indicate the fraction of residues that contain outliers for ≥ 3 , 2, 1 and 0 types of geometric quality criteria respectively. A grey segment represents the fraction of residues that are not modelled. The numeric value for each fraction is indicated below the corresponding segment, with a dot representing fractions $\leq 5\%$. The upper red bar (where present) indicates the fraction of residues that have poor fit to the electron density. The numeric value is given above the bar.

Mol	Chain	Length	Quality of chain
1	A	886	<div> <div>6%</div> <div> <div></div> <div>74%</div> <div>16%</div> <div>• 10%</div> </div> </div>
1	B	886	<div> <div>5%</div> <div> <div></div> <div>78%</div> <div>12%</div> <div>• 10%</div> </div> </div>

2 Entry composition

There are 4 unique types of molecules in this entry. The entry contains 13149 atoms, of which 0 are hydrogens and 0 are deuteriums.

In the tables below, the ZeroOcc column contains the number of atoms modelled with zero occupancy, the AltConf column contains the number of residues with at least one atom in alternate conformation and the Trace column contains the number of residues modelled with at most 2 atoms.

- Molecule 1 is a protein called Pyruvate dehydrogenase E1 component.

Mol	Chain	Residues	Atoms					ZeroOcc	AltConf	Trace
1	A	801	Total	C	N	O	S	0	0	0
			6341	4018	1093	1204	26			
1	B	801	Total	C	N	O	S	0	0	0
			6341	4018	1093	1204	26			

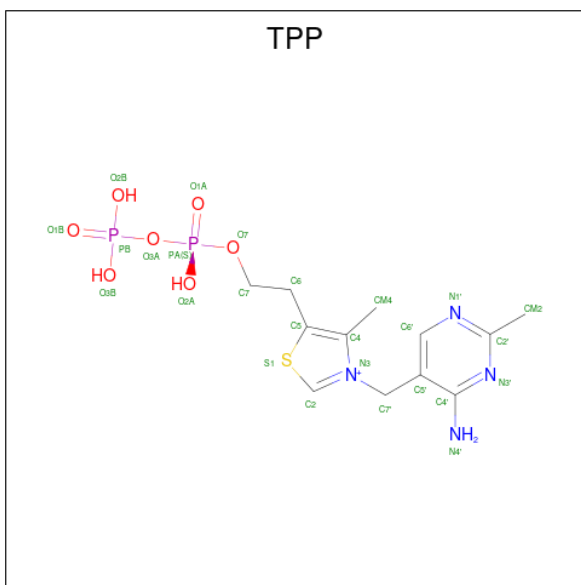
There are 2 discrepancies between the modelled and reference sequences:

Chain	Residue	Modelled	Actual	Comment	Reference
A	401	LYS	GLU	engineered mutation	UNP P0AFG8
B	401	LYS	GLU	engineered mutation	UNP P0AFG8

- Molecule 2 is MAGNESIUM ION (three-letter code: MG) (formula: Mg).

Mol	Chain	Residues	Atoms		ZeroOcc	AltConf
2	A	1	Total	Mg	0	0
			1	1		
2	B	1	Total	Mg	0	0
			1	1		

- Molecule 3 is THIAMINE DIPHOSPHATE (three-letter code: TPP) (formula: C₁₂H₁₉N₄O₇P₂S).



Mol	Chain	Residues	Atoms						ZeroOcc	AltConf
3	A	1	Total 26	C 12	N 4	O 7	P 2	S 1	0	0
3	B	1	Total 26	C 12	N 4	O 7	P 2	S 1	0	0

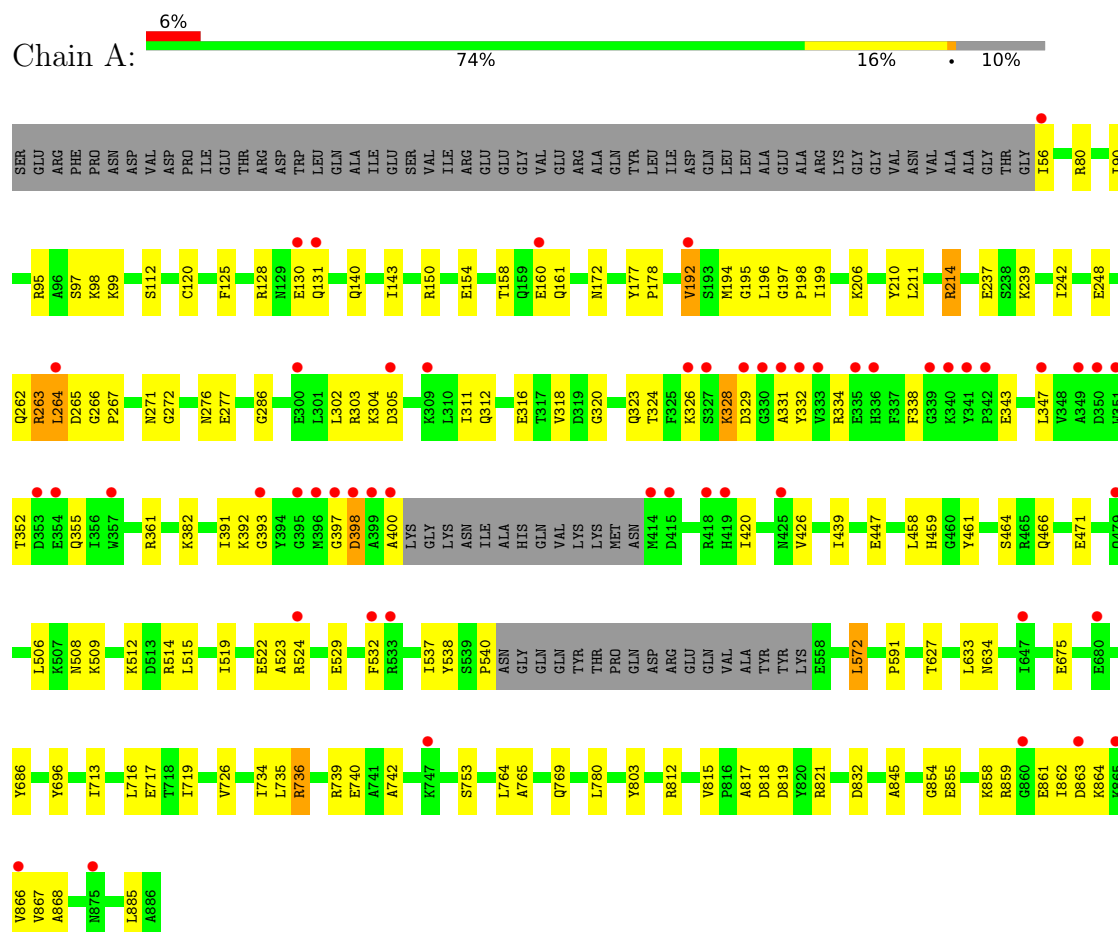
- Molecule 4 is water.

Mol	Chain	Residues	Atoms	ZeroOcc	AltConf
4	A	200	Total O 200 200	0	0
4	B	213	Total O 213 213	0	0

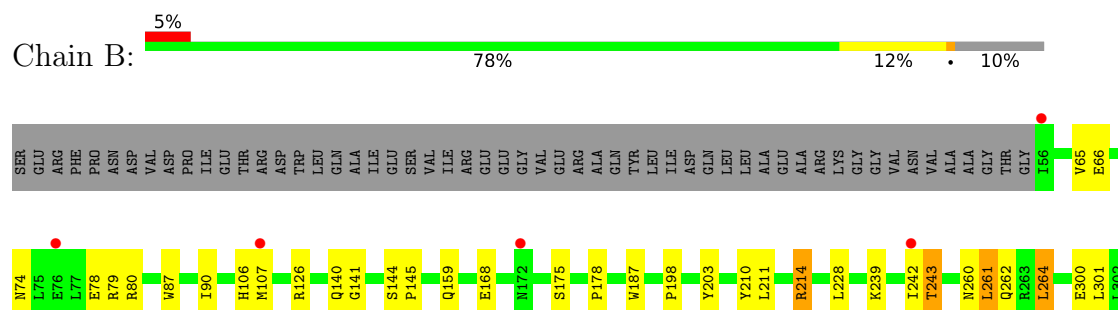
3 Residue-property plots [i](#)

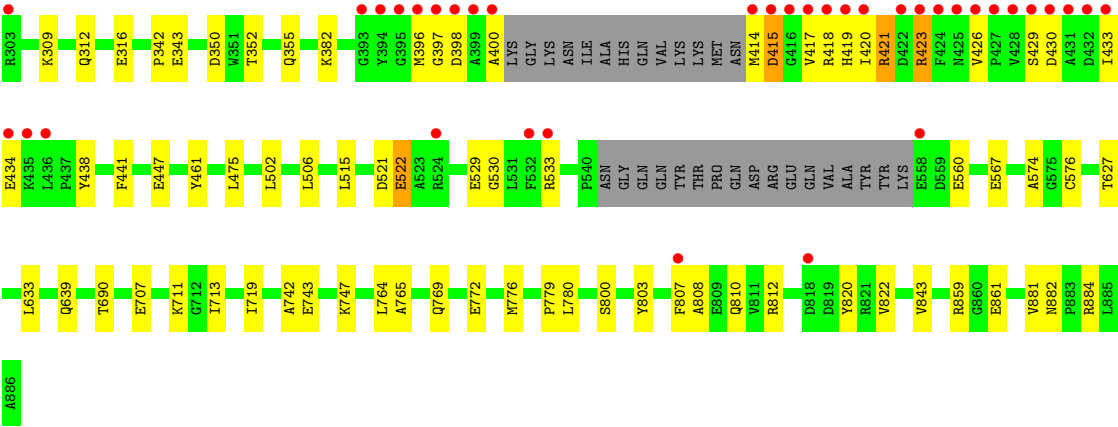
These plots are drawn for all protein, RNA, DNA and oligosaccharide chains in the entry. The first graphic for a chain summarises the proportions of the various outlier classes displayed in the second graphic. The second graphic shows the sequence view annotated by issues in geometry and electron density. Residues are color-coded according to the number of geometric quality criteria for which they contain at least one outlier: green = 0, yellow = 1, orange = 2 and red = 3 or more. A red dot above a residue indicates a poor fit to the electron density ($RSRZ > 2$). Stretches of 2 or more consecutive residues without any outlier are shown as a green connector. Residues present in the sample, but not in the model, are shown in grey.

- Molecule 1: Pyruvate dehydrogenase E1 component



- Molecule 1: Pyruvate dehydrogenase E1 component





4 Data and refinement statistics

Property	Value	Source
Space group	P 1 21 1	Depositor
Cell constants a, b, c, α , β , γ	81.81Å 141.83Å 82.56Å 90.00° 102.01° 90.00°	Depositor
Resolution (Å)	38.06 – 1.85 38.06 – 1.85	Depositor EDS
% Data completeness (in resolution range)	97.1 (38.06-1.85) 96.7 (38.06-1.85)	Depositor EDS
R_{merge}	0.07	Depositor
R_{sym}	0.07	Depositor
$\langle I/\sigma(I) \rangle$ ¹	4.27 (at 1.84Å)	Xtriage
Refinement program	CNS 1.1	Depositor
R, R_{free}	0.214 , 0.237 0.204 , 0.227	Depositor DCC
R_{free} test set	7685 reflections (5.04%)	wwPDB-VP
Wilson B-factor (Å ²)	18.0	Xtriage
Anisotropy	0.290	Xtriage
Bulk solvent k_{sol} (e/Å ³), B_{sol} (Å ²)	0.36 , 40.6	EDS
L-test for twinning ²	$\langle L \rangle = 0.49$, $\langle L^2 \rangle = 0.32$	Xtriage
Estimated twinning fraction	0.015 for l,-k,h	Xtriage
F_o, F_c correlation	0.94	EDS
Total number of atoms	13149	wwPDB-VP
Average B, all atoms (Å ²)	20.0	wwPDB-VP

Xtriage's analysis on translational NCS is as follows: *The largest off-origin peak in the Patterson function is 3.31% of the height of the origin peak. No significant pseudotranslation is detected.*

¹Intensities estimated from amplitudes.

²Theoretical values of $\langle |L| \rangle$, $\langle L^2 \rangle$ for acentric reflections are 0.5, 0.333 respectively for untwinned datasets, and 0.375, 0.2 for perfectly twinned datasets.

5 Model quality

5.1 Standard geometry

Bond lengths and bond angles in the following residue types are not validated in this section: MG, TPP

The Z score for a bond length (or angle) is the number of standard deviations the observed value is removed from the expected value. A bond length (or angle) with $|Z| > 5$ is considered an outlier worth inspection. RMSZ is the root-mean-square of all Z scores of the bond lengths (or angles).

Mol	Chain	Bond lengths		Bond angles	
		RMSZ	$\# Z > 5$	RMSZ	$\# Z > 5$
1	A	0.54	0/6484	0.70	1/8766 (0.0%)
1	B	0.56	0/6484	0.72	2/8766 (0.0%)
All	All	0.55	0/12968	0.71	3/17532 (0.0%)

Chiral center outliers are detected by calculating the chiral volume of a chiral center and verifying if the center is modelled as a planar moiety or with the opposite hand. A planarity outlier is detected by checking planarity of atoms in a peptide group, atoms in a mainchain group or atoms of a sidechain that are expected to be planar.

Mol	Chain	#Chirality outliers	#Planarity outliers
1	A	0	3
1	B	0	1
All	All	0	4

There are no bond length outliers.

All (3) bond angle outliers are listed below:

Mol	Chain	Res	Type	Atoms	Z	Observed(°)	Ideal(°)
1	B	214	ARG	NE-CZ-NH2	-5.79	117.41	120.30
1	B	126	ARG	NE-CZ-NH1	5.51	123.05	120.30
1	A	214	ARG	NE-CZ-NH2	-5.26	117.67	120.30

There are no chirality outliers.

All (4) planarity outliers are listed below:

Mol	Chain	Res	Type	Group
1	A	461	TYR	Sidechain
1	A	686	TYR	Sidechain
1	A	803	TYR	Sidechain

Continued on next page...

Continued from previous page...

Mol	Chain	Res	Type	Group
1	B	461	TYR	Sidechain

5.2 Too-close contacts ⓘ

In the following table, the Non-H and H(model) columns list the number of non-hydrogen atoms and hydrogen atoms in the chain respectively. The H(added) column lists the number of hydrogen atoms added and optimized by MolProbity. The Clashes column lists the number of clashes within the asymmetric unit, whereas Symm-Clashes lists symmetry-related clashes.

Mol	Chain	Non-H	H(model)	H(added)	Clashes	Symm-Clashes
1	A	6341	0	6179	133	0
1	B	6341	0	6179	95	0
2	A	1	0	0	0	0
2	B	1	0	0	0	0
3	A	26	0	16	1	0
3	B	26	0	16	1	0
4	A	200	0	0	2	0
4	B	213	0	0	2	0
All	All	13149	0	12390	208	0

The all-atom clashscore is defined as the number of clashes found per 1000 atoms (including hydrogen atoms). The all-atom clashscore for this structure is 8.

All (208) close contacts within the same asymmetric unit are listed below, sorted by their clash magnitude.

Atom-1	Atom-2	Interatomic distance (Å)	Clash overlap (Å)
1:A:264:LEU:CD2	1:B:522:GLU:HG3	1.62	1.29
1:A:264:LEU:HD22	1:B:522:GLU:CG	1.64	1.27
1:A:264:LEU:HD22	1:B:522:GLU:CD	1.58	1.21
1:A:177:TYR:CG	1:A:192:VAL:HG11	1.90	1.06
1:A:192:VAL:HG22	4:B:897:HOH:O	1.59	1.02
1:A:264:LEU:HD22	1:B:522:GLU:HG3	1.24	1.02
1:B:800:SER:OG	1:B:843:VAL:HG23	1.64	0.97
1:A:264:LEU:CD2	1:B:522:GLU:CG	2.32	0.97
1:A:264:LEU:HD22	1:B:522:GLU:OE1	1.63	0.97
1:A:277:GLU:OE2	1:B:243:THR:HG21	1.64	0.95
1:A:326:LYS:HD2	1:A:391:ILE:HG23	1.50	0.93
1:A:352:THR:OG1	1:A:355:GLN:HG3	1.72	0.90
1:A:177:TYR:CD2	1:A:192:VAL:HG11	2.09	0.87
1:A:264:LEU:HD23	1:A:265:ASP:OD1	1.77	0.85

Continued on next page...

Continued from previous page...

Atom-1	Atom-2	Interatomic distance (Å)	Clash overlap (Å)
1:B:417:VAL:O	1:B:420:ILE:HG22	1.74	0.85
1:A:264:LEU:CD2	1:B:522:GLU:CD	2.44	0.83
1:B:90:ILE:HG12	1:B:107:MET:HE3	1.57	0.83
1:A:696:TYR:CD2	1:A:736:ARG:HD2	2.15	0.82
1:B:414:MET:O	1:B:434:GLU:HG3	1.80	0.82
1:A:192:VAL:CG2	4:B:897:HOH:O	2.22	0.80
1:A:192:VAL:HG23	1:B:639:GLN:OE1	1.82	0.80
1:A:177:TYR:CG	1:A:192:VAL:CG1	2.67	0.78
1:A:522:GLU:OE1	1:B:264:LEU:HD23	1.86	0.75
1:A:863:ASP:O	1:A:866:VAL:HG22	1.87	0.75
1:B:418:ARG:O	1:B:421:ARG:HG3	1.87	0.75
1:A:719:ILE:HD12	1:A:742:ALA:HB1	1.70	0.74
1:A:867:VAL:HG23	1:B:779:PRO:HG3	1.68	0.74
1:A:264:LEU:HD23	1:B:522:GLU:HG3	1.68	0.73
1:B:309:LYS:HG3	1:B:343:GLU:HG3	1.70	0.73
1:A:130:GLU:HG2	1:A:131:GLN:OE1	1.89	0.73
1:A:286:GLY:O	1:A:382:LYS:HE3	1.89	0.72
1:A:524:ARG:HA	1:A:529:GLU:OE1	1.90	0.72
1:A:195:GLY:C	1:A:198:PRO:HD2	2.09	0.72
1:B:884:ARG:HG2	1:B:884:ARG:O	1.88	0.72
1:A:426:VAL:CG1	1:A:439:ILE:HD11	2.21	0.71
1:A:158:THR:OG1	1:A:160:GLU:HG2	1.92	0.69
1:A:195:GLY:O	1:A:198:PRO:HD2	1.92	0.69
1:B:309:LYS:HG3	1:B:343:GLU:CG	2.22	0.68
1:A:864:LYS:O	1:A:867:VAL:HG22	1.94	0.67
1:A:821:ARG:HH11	1:A:821:ARG:HG2	1.59	0.67
1:B:415:ASP:C	1:B:417:VAL:H	1.97	0.67
1:B:530:GLY:HA2	1:B:533:ARG:NH1	2.10	0.67
1:A:160:GLU:HG3	1:A:172:ASN:OD1	1.94	0.67
1:B:421:ARG:HG2	1:B:433:ILE:HD11	1.77	0.66
1:A:272:GLY:O	1:A:318:VAL:HG22	1.95	0.65
1:A:862:ILE:HD12	1:A:866:VAL:HG21	1.78	0.65
1:B:423:ARG:O	1:B:423:ARG:HD3	1.96	0.65
1:B:418:ARG:HB2	1:B:421:ARG:NH1	2.11	0.64
1:A:312:GLN:O	1:A:316:GLU:HG2	1.98	0.64
1:A:812:ARG:NH2	1:A:818:ASP:O	2.31	0.64
1:A:458:LEU:O	1:A:459:HIS:HB2	1.99	0.63
1:A:867:VAL:CG2	1:B:779:PRO:HG3	2.29	0.62
1:A:264:LEU:CD2	1:B:522:GLU:OE1	2.44	0.62
1:A:328:LYS:HG3	1:A:332:TYR:CD1	2.35	0.62
1:A:862:ILE:HD12	1:A:866:VAL:CG2	2.30	0.61

Continued on next page...

Continued from previous page...

Atom-1	Atom-2	Interatomic distance (Å)	Clash overlap (Å)
1:A:160:GLU:HG2	1:A:161:GLN:N	2.16	0.60
1:B:352:THR:OG1	1:B:355:GLN:HG3	2.02	0.60
1:A:140:GLN:O	1:A:143:ILE:HG13	2.01	0.60
1:B:418:ARG:HB2	1:B:421:ARG:HH11	1.67	0.60
1:B:239:LYS:HA	1:B:242:ILE:HG23	1.82	0.60
1:B:239:LYS:O	1:B:242:ILE:HG12	2.02	0.59
1:A:854:GLY:O	1:A:858:LYS:HG3	2.03	0.59
1:B:90:ILE:HG23	1:B:107:MET:HE3	1.85	0.59
1:A:519:ILE:HD12	1:A:523:ALA:HB2	1.83	0.59
1:A:765:ALA:O	1:A:769:GLN:HG3	2.03	0.59
1:B:743:GLU:OE1	1:B:747:LYS:HE3	2.03	0.58
1:B:414:MET:CE	1:B:434:GLU:HG2	2.33	0.58
1:B:396:MET:O	1:B:398:ASP:N	2.36	0.58
1:B:843:VAL:HG22	1:B:843:VAL:O	2.02	0.58
1:A:95:ARG:O	1:A:98:LYS:HD3	2.03	0.57
1:A:237:GLU:HG2	1:A:572:LEU:HD11	1.86	0.57
1:A:160:GLU:CD	1:A:172:ASN:OD1	2.43	0.57
1:A:197:GLY:N	1:A:198:PRO:HD2	2.18	0.57
1:A:719:ILE:CD1	1:A:742:ALA:HB1	2.34	0.57
1:A:393:GLY:HA3	1:A:400:ALA:HB1	1.87	0.57
1:A:328:LYS:HA	1:A:328:LYS:HE2	1.87	0.56
1:A:304:LYS:HE3	1:A:347:LEU:CD2	2.35	0.56
1:B:776:MET:CE	1:B:776:MET:HA	2.35	0.56
1:A:56:ILE:HD13	1:A:276:ASN:HB3	1.87	0.56
1:A:197:GLY:N	1:A:198:PRO:CD	2.69	0.56
1:A:305:ASP:OD1	1:A:347:LEU:HD11	2.05	0.56
1:A:343:GLU:O	1:A:347:LEU:HG	2.07	0.55
1:A:716:LEU:HD21	1:A:739:ARG:NH1	2.22	0.55
1:A:98:LYS:HG2	1:A:99:LYS:N	2.21	0.55
4:A:1026:HOH:O	3:B:887:TPP:H2	2.06	0.55
1:A:736:ARG:HG3	4:A:961:HOH:O	2.06	0.54
1:A:195:GLY:O	1:A:198:PRO:HG2	2.08	0.54
1:A:734:ILE:HG22	1:A:734:ILE:O	2.06	0.54
1:A:160:GLU:CG	1:A:172:ASN:OD1	2.56	0.54
1:B:415:ASP:C	1:B:417:VAL:N	2.61	0.53
1:B:627:THR:HB	1:B:633:LEU:HD22	1.90	0.53
1:A:264:LEU:HD13	1:B:522:GLU:OE1	2.08	0.53
1:A:195:GLY:O	1:A:198:PRO:CG	2.57	0.53
1:A:696:TYR:CG	1:A:736:ARG:HD2	2.43	0.52
1:A:195:GLY:O	1:A:198:PRO:CD	2.58	0.52
1:A:196:LEU:C	1:A:198:PRO:HD2	2.30	0.52

Continued on next page...

Continued from previous page...

Atom-1	Atom-2	Interatomic distance (Å)	Clash overlap (Å)
1:A:304:LYS:HE3	1:A:347:LEU:HD23	1.91	0.52
1:B:90:ILE:HG23	1:B:107:MET:CE	2.39	0.52
1:A:713:ILE:HB	1:A:764:LEU:HD11	1.90	0.52
1:B:210:TYR:CZ	1:B:214:ARG:HD3	2.45	0.52
1:B:65:VAL:HG23	1:B:66:GLU:CD	2.30	0.51
1:A:95:ARG:O	1:A:98:LYS:CD	2.59	0.51
1:B:423:ARG:HD3	1:B:423:ARG:C	2.31	0.51
1:B:418:ARG:HD3	1:B:430:ASP:OD1	2.10	0.51
1:A:262:GLN:HA	1:A:267:PRO:HA	1.92	0.51
1:B:707:GLU:OE2	1:B:711:LYS:NZ	2.38	0.51
1:A:239:LYS:O	1:A:242:ILE:HG12	2.10	0.51
1:A:471:GLU:OE2	1:A:591:PRO:HD2	2.11	0.50
1:B:812:ARG:HD2	1:B:820:TYR:HD2	1.76	0.50
1:A:819:ASP:OD2	1:A:855:GLU:HG2	2.12	0.50
1:A:859:ARG:NH1	1:A:861:GLU:OE1	2.45	0.50
1:B:260:ASN:O	1:B:261:LEU:HB2	2.11	0.50
1:B:419:HIS:O	1:B:423:ARG:HB2	2.12	0.50
1:B:396:MET:HB2	1:B:400:ALA:HA	1.94	0.49
1:A:160:GLU:CG	1:A:161:GLN:N	2.75	0.49
1:B:239:LYS:HA	1:B:242:ILE:CG2	2.43	0.49
1:A:328:LYS:HG3	1:A:332:TYR:CE1	2.48	0.49
1:A:734:ILE:O	1:A:734:ILE:CG2	2.61	0.48
1:B:859:ARG:HH12	1:B:861:GLU:CD	2.16	0.48
1:A:160:GLU:HG2	1:A:161:GLN:H	1.77	0.48
1:A:509:LYS:HA	1:A:512:LYS:HE3	1.96	0.48
1:A:320:GLY:O	1:A:324:THR:HG23	2.14	0.48
1:A:304:LYS:NZ	1:A:347:LEU:O	2.47	0.48
1:A:506:LEU:HD23	1:A:515:LEU:HD12	1.95	0.48
1:A:128:ARG:NH1	1:A:464:SER:OG	2.38	0.47
1:B:506:LEU:HD23	1:B:515:LEU:HD12	1.97	0.47
1:A:522:GLU:OE1	1:B:264:LEU:CD2	2.59	0.47
1:A:326:LYS:HB3	1:A:326:LYS:NZ	2.30	0.47
1:B:765:ALA:O	1:B:769:GLN:HG3	2.14	0.47
1:B:843:VAL:O	1:B:843:VAL:CG2	2.62	0.47
1:A:522:GLU:CD	1:B:264:LEU:HD23	2.36	0.47
1:A:867:VAL:HG21	1:B:779:PRO:CB	2.45	0.46
1:A:532:PHE:CD1	1:A:537:ILE:HD11	2.50	0.46
1:A:634:ASN:HB2	1:A:832:ASP:O	2.16	0.46
1:A:627:THR:HB	1:A:633:LEU:HD22	1.97	0.46
1:B:312:GLN:O	1:B:316:GLU:HG2	2.16	0.46
1:A:426:VAL:HG13	1:A:439:ILE:HD11	1.98	0.46

Continued on next page...

Continued from previous page...

Atom-1	Atom-2	Interatomic distance (Å)	Clash overlap (Å)
1:A:508:ASN:O	1:A:512:LYS:HB3	2.15	0.46
1:B:506:LEU:CD2	1:B:515:LEU:HD12	2.45	0.45
1:A:323:GLN:HE21	1:A:361:ARG:HH22	1.62	0.45
1:A:538:TYR:CZ	1:A:540:PRO:HG3	2.52	0.45
1:A:210:TYR:CZ	1:A:214:ARG:HD3	2.51	0.45
1:B:144:SER:OG	1:B:145:PRO:HD3	2.15	0.45
1:A:206:LYS:HD2	1:A:248:GLU:HG3	1.99	0.45
1:A:150:ARG:O	1:A:154:GLU:HG3	2.16	0.45
1:A:271:ASN:C	1:A:318:VAL:HG21	2.37	0.45
1:A:334:ARG:HA	1:A:338:PHE:HB2	1.99	0.45
1:B:140:GLN:O	1:B:141:GLY:C	2.54	0.45
1:B:429:SER:O	1:B:433:ILE:HG13	2.17	0.44
1:A:726:VAL:O	1:A:753:SER:HA	2.17	0.44
1:B:808:ALA:HB3	1:B:822:VAL:CG1	2.47	0.44
1:B:159:GLN:HG3	1:B:438:TYR:CD2	2.52	0.44
1:A:717:GLU:CD	1:A:739:ARG:HH21	2.21	0.44
1:A:821:ARG:HG2	1:A:821:ARG:NH1	2.29	0.44
1:A:821:ARG:CD	1:B:772:GLU:OE2	2.66	0.44
1:B:414:MET:HE3	1:B:434:GLU:HG2	2.00	0.44
1:B:441:PHE:CE1	1:B:447:GLU:HG2	2.52	0.44
1:B:79:ARG:HG2	1:B:79:ARG:HH11	1.82	0.44
1:A:195:GLY:C	1:A:198:PRO:CD	2.83	0.44
1:B:198:PRO:HD3	1:B:228:LEU:HD22	2.00	0.44
1:B:421:ARG:HD3	1:B:421:ARG:C	2.38	0.44
1:B:529:GLU:HG2	1:B:530:GLY:N	2.33	0.43
1:A:263:ARG:HG3	1:A:266:GLY:O	2.19	0.43
1:A:821:ARG:HD3	1:B:772:GLU:OE2	2.17	0.43
1:B:90:ILE:HG12	1:B:107:MET:CE	2.38	0.43
1:B:178:PRO:HA	1:B:187:TRP:CG	2.54	0.43
1:A:199:ILE:HD13	1:A:572:LEU:HD13	2.01	0.43
1:A:324:THR:O	1:A:328:LYS:HG2	2.18	0.43
1:A:177:TYR:HB3	1:A:178:PRO:CD	2.49	0.43
1:A:815:VAL:HG12	1:A:817:ALA:H	1.83	0.43
1:B:342:PRO:HD2	1:B:343:GLU:OE2	2.19	0.43
1:A:740:GLU:HG2	1:A:845:ALA:CB	2.49	0.43
1:A:194:MET:HE1	3:A:887:TPP:H72	2.01	0.43
1:A:80:ARG:HD2	1:A:447:GLU:OE2	2.18	0.42
1:B:530:GLY:HA2	1:B:533:ARG:HH12	1.81	0.42
1:B:418:ARG:HA	1:B:421:ARG:CG	2.49	0.42
1:A:302:LEU:HD22	1:A:311:ILE:HD11	2.02	0.42
1:A:264:LEU:HD21	1:B:522:GLU:CG	2.42	0.42

Continued on next page...

Continued from previous page...

Atom-1	Atom-2	Interatomic distance (Å)	Clash overlap (Å)
1:A:735:LEU:O	1:A:736:ARG:C	2.56	0.42
1:B:881:VAL:HG22	1:B:882:ASN:N	2.34	0.42
1:A:329:ASP:OD1	1:A:331:ALA:HB3	2.20	0.42
1:B:350:ASP:OD1	1:B:350:ASP:N	2.51	0.42
1:A:112:SER:HB3	1:A:392:LYS:HA	2.01	0.42
1:A:323:GLN:NE2	1:A:361:ARG:HH22	2.17	0.41
1:A:120:CYS:HB3	1:A:125:PHE:CZ	2.54	0.41
1:B:65:VAL:HG23	1:B:66:GLU:OE2	2.19	0.41
1:B:780:LEU:HD13	1:B:780:LEU:HA	1.84	0.41
1:A:90:ILE:HD13	1:A:420:ILE:HD13	2.01	0.41
1:B:74:ASN:O	1:B:78:GLU:HG3	2.21	0.41
1:B:567:GLU:HG3	1:B:574:ALA:HA	2.03	0.41
1:B:713:ILE:HB	1:B:764:LEU:HD11	2.02	0.41
1:B:80:ARG:NH1	1:B:447:GLU:OE2	2.54	0.41
1:B:87:TRP:CD2	1:B:426:VAL:HG11	2.56	0.41
1:B:203:TYR:HB2	1:B:576:CYS:HB3	2.03	0.41
1:B:690:THR:HG21	1:B:803:TYR:OH	2.20	0.41
1:B:807:PHE:O	1:B:810:GLN:HG2	2.20	0.41
1:B:90:ILE:CG1	1:B:107:MET:HE3	2.40	0.40
1:A:304:LYS:HE3	1:A:347:LEU:HD22	2.02	0.40
1:A:177:TYR:CB	1:A:192:VAL:HG11	2.48	0.40
1:A:506:LEU:CD2	1:A:515:LEU:HD12	2.51	0.40
1:B:168:GLU:CD	1:B:175:SER:HA	2.41	0.40
1:B:719:ILE:HD12	1:B:742:ALA:HB1	2.02	0.40
1:A:98:LYS:HG2	1:A:99:LYS:HG3	2.03	0.40
1:A:177:TYR:CD1	1:A:192:VAL:CG1	3.04	0.40
1:A:716:LEU:HD21	1:A:739:ARG:CZ	2.52	0.40
1:A:867:VAL:CG2	1:A:868:ALA:N	2.84	0.40
1:B:198:PRO:HD3	1:B:228:LEU:CD2	2.51	0.40
1:A:514:ARG:NH1	1:A:591:PRO:HG2	2.37	0.40

There are no symmetry-related clashes.

5.3 Torsion angles

5.3.1 Protein backbone

In the following table, the Percentiles column shows the percent Ramachandran outliers of the chain as a percentile score with respect to all X-ray entries followed by that with respect to entries of similar resolution.

The Analysed column shows the number of residues for which the backbone conformation was analysed, and the total number of residues.

Mol	Chain	Analysed	Favoured	Allowed	Outliers	Percentiles	
1	A	795/886 (90%)	765 (96%)	26 (3%)	4 (0%)	29	15
1	B	795/886 (90%)	765 (96%)	27 (3%)	3 (0%)	34	19
All	All	1590/1772 (90%)	1530 (96%)	53 (3%)	7 (0%)	34	19

All (7) Ramachandran outliers are listed below:

Mol	Chain	Res	Type
1	A	328	LYS
1	A	397	GLY
1	A	398	ASP
1	B	397	GLY
1	B	415	ASP
1	A	736	ARG
1	B	521	ASP

5.3.2 Protein sidechains ⓘ

In the following table, the Percentiles column shows the percent sidechain outliers of the chain as a percentile score with respect to all X-ray entries followed by that with respect to entries of similar resolution.

The Analysed column shows the number of residues for which the sidechain conformation was analysed, and the total number of residues.

Mol	Chain	Analysed	Rotameric	Outliers	Percentiles	
1	A	665/735 (90%)	653 (98%)	12 (2%)	59	45
1	B	665/735 (90%)	650 (98%)	15 (2%)	50	34
All	All	1330/1470 (90%)	1303 (98%)	27 (2%)	55	40

All (27) residues with a non-rotameric sidechain are listed below:

Mol	Chain	Res	Type
1	A	97	SER
1	A	192	VAL
1	A	211	LEU
1	A	263	ARG
1	A	264	LEU
1	A	303	ARG

Continued on next page...

Continued from previous page...

Mol	Chain	Res	Type
1	A	398	ASP
1	A	466	GLN
1	A	572	LEU
1	A	675	GLU
1	A	780	LEU
1	A	885	LEU
1	B	106	HIS
1	B	211	LEU
1	B	243	THR
1	B	261	LEU
1	B	262	GLN
1	B	264	LEU
1	B	300	GLU
1	B	301	LEU
1	B	382	LYS
1	B	421	ARG
1	B	423	ARG
1	B	475	LEU
1	B	502	LEU
1	B	522	GLU
1	B	560	GLU

Sometimes sidechains can be flipped to improve hydrogen bonding and reduce clashes. All (3) such sidechains are listed below:

Mol	Chain	Res	Type
1	A	262	GLN
1	A	323	GLN
1	A	456	GLN

5.3.3 RNA ⓘ

There are no RNA molecules in this entry.

5.4 Non-standard residues in protein, DNA, RNA chains ⓘ

There are no non-standard protein/DNA/RNA residues in this entry.

5.5 Carbohydrates ⓘ

There are no monosaccharides in this entry.

5.6 Ligand geometry

Of 4 ligands modelled in this entry, 2 are monoatomic - leaving 2 for Mogul analysis.

In the following table, the Counts columns list the number of bonds (or angles) for which Mogul statistics could be retrieved, the number of bonds (or angles) that are observed in the model and the number of bonds (or angles) that are defined in the Chemical Component Dictionary. The Link column lists molecule types, if any, to which the group is linked. The Z score for a bond length (or angle) is the number of standard deviations the observed value is removed from the expected value. A bond length (or angle) with $|Z| > 2$ is considered an outlier worth inspection. RMSZ is the root-mean-square of all Z scores of the bond lengths (or angles).

Mol	Type	Chain	Res	Link	Bond lengths			Bond angles		
					Counts	RMSZ	# $ Z > 2$	Counts	RMSZ	# $ Z > 2$
3	TPP	A	887	2	22,27,27	2.05	6 (27%)	29,40,40	1.05	1 (3%)
3	TPP	B	887	2	22,27,27	1.90	8 (36%)	29,40,40	1.00	1 (3%)

In the following table, the Chirals column lists the number of chiral outliers, the number of chiral centers analysed, the number of these observed in the model and the number defined in the Chemical Component Dictionary. Similar counts are reported in the Torsion and Rings columns. '-' means no outliers of that kind were identified.

Mol	Type	Chain	Res	Link	Chirals	Torsions	Rings
3	TPP	A	887	2	-	1/16/17/17	0/2/2/2
3	TPP	B	887	2	-	2/16/17/17	0/2/2/2

All (14) bond length outliers are listed below:

Mol	Chain	Res	Type	Atoms	Z	Observed(Å)	Ideal(Å)
3	A	887	TPP	C6-C5	-5.70	1.48	1.50
3	A	887	TPP	C4'-N3'	4.15	1.41	1.35
3	B	887	TPP	C4'-N3'	3.94	1.40	1.35
3	B	887	TPP	C5'-C4'	3.36	1.48	1.42
3	A	887	TPP	C5'-C4'	3.34	1.48	1.42
3	B	887	TPP	C6-C5	-3.29	1.49	1.50
3	B	887	TPP	C2'-N1'	3.14	1.39	1.34
3	B	887	TPP	C6'-N1'	2.84	1.40	1.34
3	B	887	TPP	C4-N3	2.63	1.42	1.39
3	B	887	TPP	C7'-N3	2.62	1.53	1.48
3	A	887	TPP	C7'-N3	2.49	1.53	1.48
3	A	887	TPP	C2'-N1'	2.43	1.38	1.34
3	A	887	TPP	C6'-N1'	2.43	1.39	1.34
3	B	887	TPP	PA-O2A	-2.05	1.45	1.55

All (2) bond angle outliers are listed below:

Mol	Chain	Res	Type	Atoms	Z	Observed(°)	Ideal(°)
3	A	887	TPP	C6'-N1'-C2'	2.43	120.10	115.96
3	B	887	TPP	C6'-N1'-C2'	2.21	119.73	115.96

There are no chirality outliers.

All (3) torsion outliers are listed below:

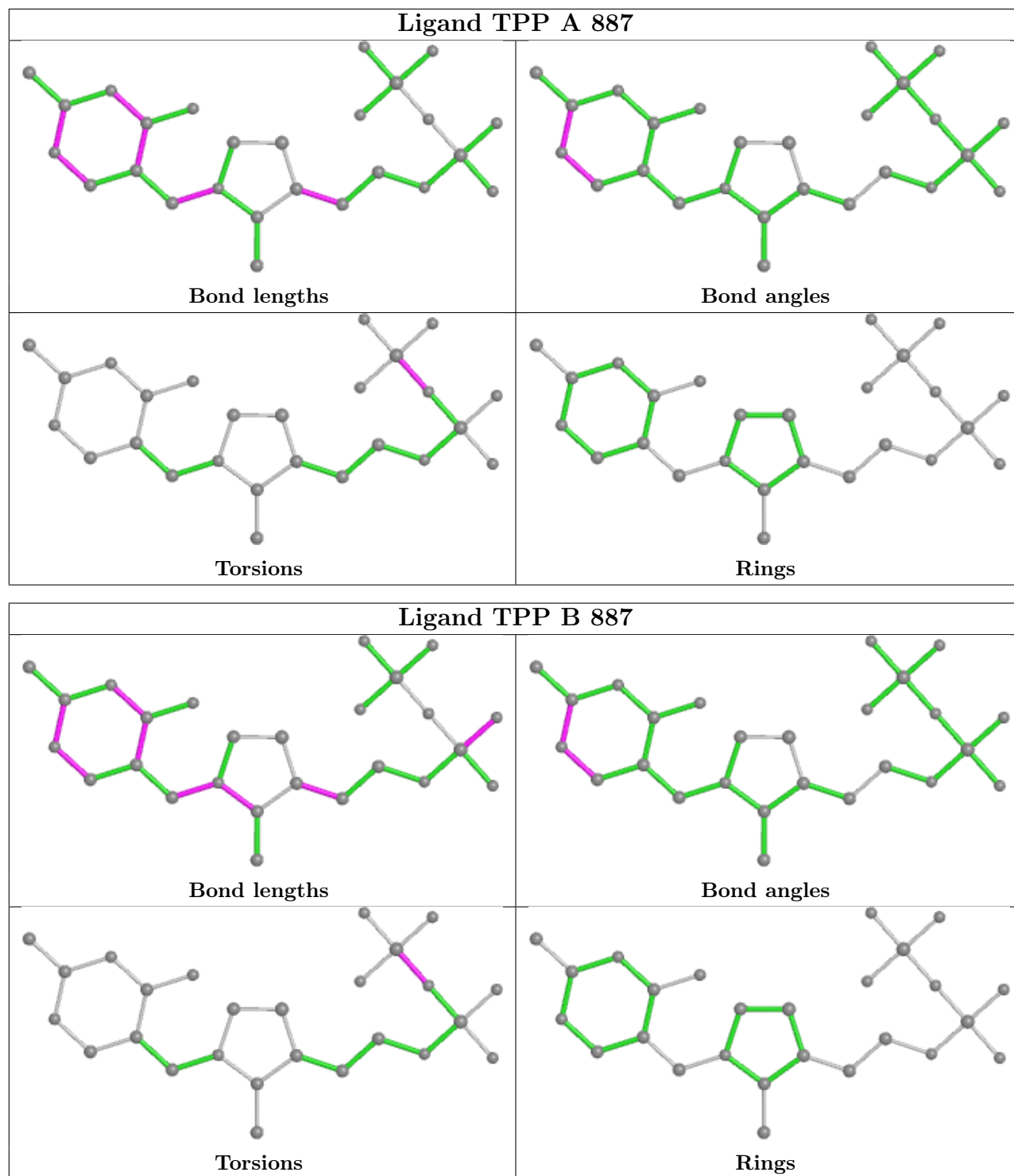
Mol	Chain	Res	Type	Atoms
3	A	887	TPP	PA-O3A-PB-O2B
3	B	887	TPP	PA-O3A-PB-O2B
3	B	887	TPP	PA-O3A-PB-O3B

There are no ring outliers.

2 monomers are involved in 2 short contacts:

Mol	Chain	Res	Type	Clashes	Symm-Clashes
3	A	887	TPP	1	0
3	B	887	TPP	1	0

The following is a two-dimensional graphical depiction of Mogul quality analysis of bond lengths, bond angles, torsion angles, and ring geometry for all instances of the Ligand of Interest. In addition, ligands with molecular weight > 250 and outliers as shown on the validation Tables will also be included. For torsion angles, if less than 5% of the Mogul distribution of torsion angles is within 10 degrees of the torsion angle in question, then that torsion angle is considered an outlier. Any bond that is central to one or more torsion angles identified as an outlier by Mogul will be highlighted in the graph. For rings, the root-mean-square deviation (RMSD) between the ring in question and similar rings identified by Mogul is calculated over all ring torsion angles. If the average RMSD is greater than 60 degrees and the minimal RMSD between the ring in question and any Mogul-identified rings is also greater than 60 degrees, then that ring is considered an outlier. The outliers are highlighted in purple. The color gray indicates Mogul did not find sufficient equivalents in the CSD to analyse the geometry.



5.7 Other polymers [\(i\)](#)

There are no such residues in this entry.

5.8 Polymer linkage issues ⓘ

There are no chain breaks in this entry.

6 Fit of model and data

6.1 Protein, DNA and RNA chains

In the following table, the column labelled ‘#RSRZ> 2’ contains the number (and percentage) of RSRZ outliers, followed by percent RSRZ outliers for the chain as percentile scores relative to all X-ray entries and entries of similar resolution. The OWAB column contains the minimum, median, 95th percentile and maximum values of the occupancy-weighted average B-factor per residue. The column labelled ‘Q< 0.9’ lists the number of (and percentage) of residues with an average occupancy less than 0.9.

Mol	Chain	Analysed	<RSRZ>	#RSRZ>2	OWAB(Å ²)	Q<0.9
1	A	801/886 (90%)	0.21	53 (6%) 18 17	11, 20, 37, 41	0
1	B	801/886 (90%)	0.18	42 (5%) 27 26	10, 19, 31, 47	0
All	All	1602/1772 (90%)	0.19	95 (5%) 22 22	10, 19, 36, 47	0

All (95) RSRZ outliers are listed below:

Mol	Chain	Res	Type	RSRZ
1	B	399	ALA	18.3
1	A	400	ALA	13.6
1	B	400	ALA	11.6
1	B	414	MET	10.3
1	A	399	ALA	9.9
1	B	398	ASP	9.2
1	B	415	ASP	8.8
1	A	397	GLY	7.7
1	A	398	ASP	7.4
1	B	397	GLY	7.1
1	B	428	VAL	6.6
1	B	420	ILE	6.1
1	B	416	GLY	5.5
1	B	396	MET	5.4
1	B	431	ALA	5.0
1	B	395	GLY	4.9
1	A	264	LEU	4.9
1	A	533	ARG	4.9
1	A	349	ALA	4.8
1	A	414	MET	4.6
1	B	433	ILE	4.6
1	B	432	ASP	4.5
1	B	426	VAL	4.2
1	A	351	TRP	4.2

Continued on next page...

Continued from previous page...

Mol	Chain	Res	Type	RSRZ
1	B	56	ILE	4.2
1	B	417	VAL	4.0
1	B	430	ASP	3.9
1	B	434	GLU	3.8
1	A	341	TYR	3.8
1	B	436	LEU	3.8
1	B	418	ARG	3.5
1	B	533	ARG	3.5
1	A	354	GLU	3.4
1	B	393	GLY	3.3
1	B	425	ASN	3.3
1	A	396	MET	3.2
1	B	172	ASN	3.2
1	A	418	ARG	3.1
1	A	415	ASP	3.1
1	B	429	SER	3.1
1	A	342	PRO	3.1
1	B	818	ASP	3.1
1	A	350	ASP	3.0
1	B	394	TYR	3.0
1	A	130	GLU	2.9
1	A	875	ASN	2.8
1	A	327	SER	2.7
1	A	340	LYS	2.7
1	A	333	VAL	2.7
1	A	353	ASP	2.7
1	A	305	ASP	2.7
1	B	422	ASP	2.7
1	B	419	HIS	2.7
1	A	336	HIS	2.7
1	A	524	ARG	2.7
1	B	107	MET	2.6
1	A	866	VAL	2.6
1	A	131	GLN	2.6
1	A	332	TYR	2.5
1	B	427	PRO	2.5
1	B	303	ARG	2.5
1	A	192	VAL	2.5
1	A	860	GLY	2.5
1	B	435	LYS	2.4
1	B	524	ARG	2.4
1	A	331	ALA	2.4

Continued on next page...

Continued from previous page...

Mol	Chain	Res	Type	RSRZ
1	A	395	GLY	2.4
1	A	326	LYS	2.4
1	B	532	PHE	2.3
1	A	330	GLY	2.3
1	B	423	ARG	2.3
1	A	56	ILE	2.3
1	A	419	HIS	2.3
1	A	329	ASP	2.3
1	A	309	LYS	2.2
1	A	335	GLU	2.2
1	A	863	ASP	2.2
1	A	357	TRP	2.2
1	A	425	ASN	2.1
1	B	424	PHE	2.1
1	A	339	GLY	2.1
1	A	479	GLN	2.1
1	A	647	ILE	2.1
1	A	347	LEU	2.1
1	B	807	PHE	2.1
1	B	76	GLU	2.1
1	A	393	GLY	2.1
1	A	747	LYS	2.1
1	A	532	PHE	2.1
1	A	300	GLU	2.1
1	A	680	GLU	2.0
1	B	242	ILE	2.0
1	A	865	LYS	2.0
1	A	160	GLU	2.0
1	B	558	GLU	2.0

6.2 Non-standard residues in protein, DNA, RNA chains ⓘ

There are no non-standard protein/DNA/RNA residues in this entry.

6.3 Carbohydrates ⓘ

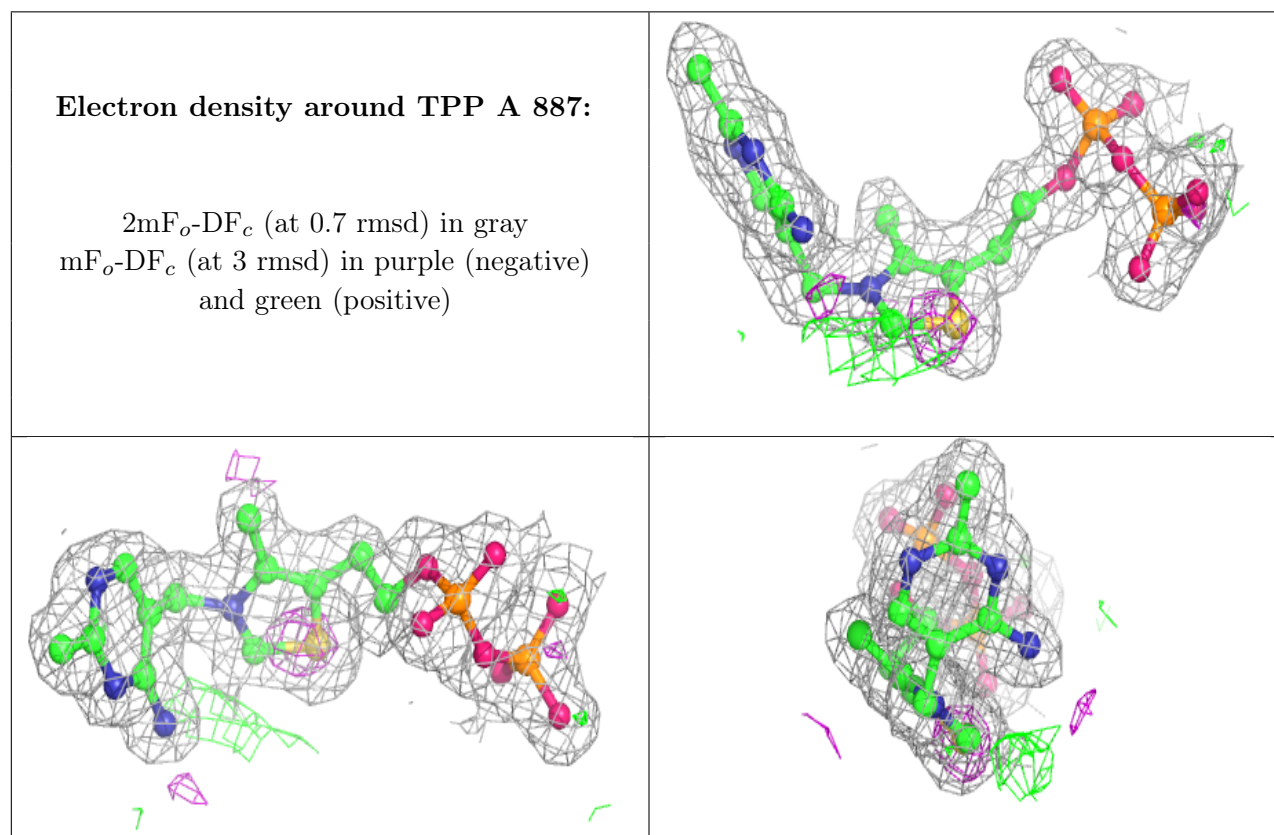
There are no monosaccharides in this entry.

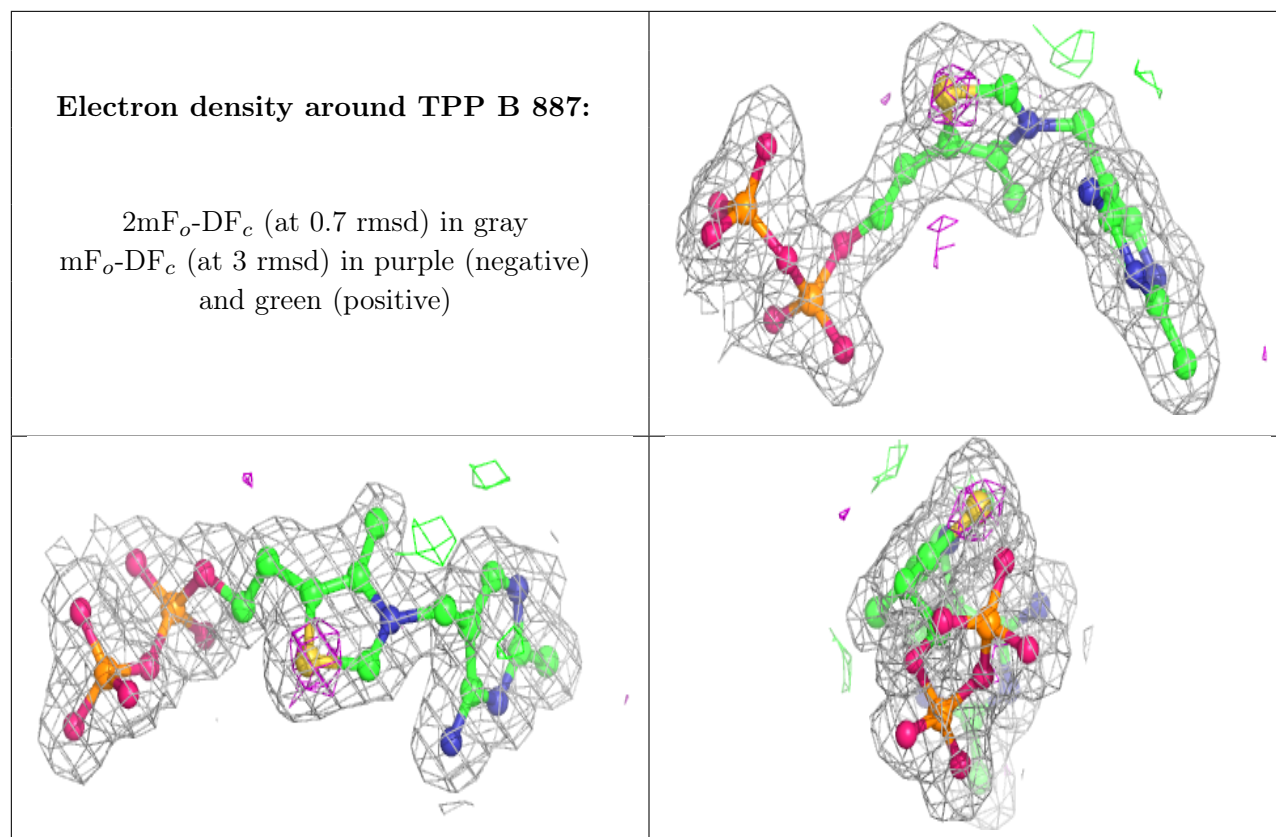
6.4 Ligands ⓘ

In the following table, the Atoms column lists the number of modelled atoms in the group and the number defined in the chemical component dictionary. The B-factors column lists the minimum, median, 95th percentile and maximum values of B factors of atoms in the group. The column labelled 'Q< 0.9' lists the number of atoms with occupancy less than 0.9.

Mol	Type	Chain	Res	Atoms	RSCC	RSR	B-factors(Å ²)	Q<0.9
3	TPP	A	887	26/26	0.95	0.09	19,21,21,21	0
2	MG	A	888	1/1	0.96	0.10	19,19,19,19	0
2	MG	B	888	1/1	0.97	0.10	18,18,18,18	0
3	TPP	B	887	26/26	0.97	0.08	17,17,18,19	0

The following is a graphical depiction of the model fit to experimental electron density of all instances of the Ligand of Interest. In addition, ligands with molecular weight > 250 and outliers as shown on the geometry validation Tables will also be included. Each fit is shown from different orientation to approximate a three-dimensional view.





6.5 Other polymers [i](#)

There are no such residues in this entry.