



wwPDB X-ray Structure Validation Summary Report ⓘ

May 15, 2020 – 02:40 pm BST

PDB ID : 2QTC
Title : E. coli Pyruvate dehydrogenase E1 component E401K mutant with phosphonolactylthiamin diphosphate
Authors : Furey, W.; Arjunan, P.; Chandrasekhar, K.
Deposited on : 2007-08-01
Resolution : 1.77 Å(reported)

This is a wwPDB X-ray Structure Validation Summary Report for a publicly released PDB entry.

We welcome your comments at validation@mail.wwpdb.org

A user guide is available at

<https://www.wwpdb.org/validation/2017/XrayValidationReportHelp>

with specific help available everywhere you see the ⓘ symbol.

The following versions of software and data (see [references ⓘ](#)) were used in the production of this report:

MolProbity : 4.02b-467
Mogul : 1.8.5 (274361), CSD as541be (2020)
Xtriage (Phenix) : 1.13
EDS : 2.11
buster-report : 1.1.7 (2018)
Percentile statistics : 20191225.v01 (using entries in the PDB archive December 25th 2019)
Refmac : 5.8.0158
CCP4 : 7.0.044 (Gargrove)
Ideal geometry (proteins) : Engh & Huber (2001)
Ideal geometry (DNA, RNA) : Parkinson et al. (1996)
Validation Pipeline (wwPDB-VP) : 2.11

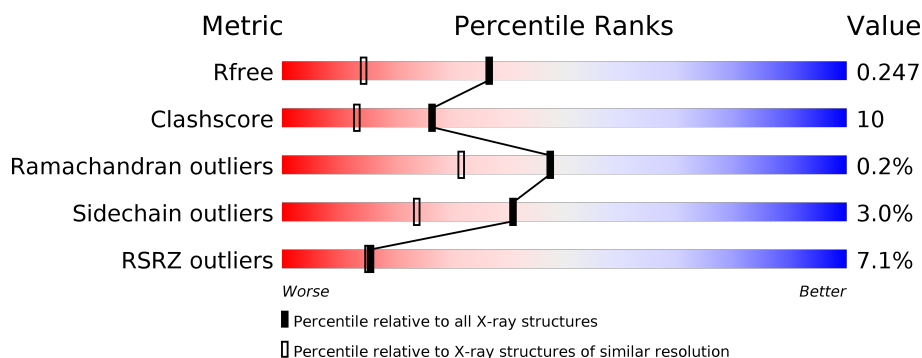
1 Overall quality at a glance

The following experimental techniques were used to determine the structure:

X-RAY DIFFRACTION

The reported resolution of this entry is 1.77 Å.

Percentile scores (ranging between 0-100) for global validation metrics of the entry are shown in the following graphic. The table shows the number of entries on which the scores are based.



Metric	Whole archive (#Entries)	Similar resolution (#Entries, resolution range(Å))
R_{free}	130704	9185 (1.80-1.76)
Clashscore	141614	10184 (1.80-1.76)
Ramachandran outliers	138981	10051 (1.80-1.76)
Sidechain outliers	138945	10050 (1.80-1.76)
RSRZ outliers	127900	9032 (1.80-1.76)

The table below summarises the geometric issues observed across the polymeric chains and their fit to the electron density. The red, orange, yellow and green segments on the lower bar indicate the fraction of residues that contain outliers for ≥ 3 , 2, 1 and 0 types of geometric quality criteria respectively. A grey segment represents the fraction of residues that are not modelled. The numeric value for each fraction is indicated below the corresponding segment, with a dot representing fractions $\leq 5\%$. The upper red bar (where present) indicates the fraction of residues that have poor fit to the electron density. The numeric value is given above the bar.

Mol	Chain	Length	Quality of chain
1	A	886	<div> <div>7%</div> <div> <div></div> <div>72%</div> <div>17%</div> <div>• 10%</div> </div> </div>
1	B	886	<div> <div>6%</div> <div> <div></div> <div>75%</div> <div>14%</div> <div>• 10%</div> </div> </div>

2 Entry composition

There are 4 unique types of molecules in this entry. The entry contains 13146 atoms, of which 0 are hydrogens and 0 are deuteriums.

In the tables below, the ZeroOcc column contains the number of atoms modelled with zero occupancy, the AltConf column contains the number of residues with at least one atom in alternate conformation and the Trace column contains the number of residues modelled with at most 2 atoms.

- Molecule 1 is a protein called Pyruvate dehydrogenase E1 component.

Mol	Chain	Residues	Atoms					ZeroOcc	AltConf	Trace
1	A	801	Total	C	N	O	S	0	0	0
			6341	4018	1093	1204	26			
1	B	801	Total	C	N	O	S	0	0	0
			6341	4018	1093	1204	26			

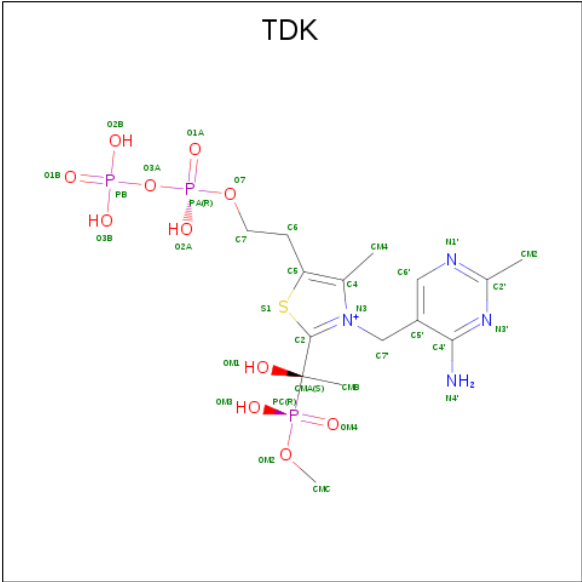
There are 2 discrepancies between the modelled and reference sequences:

Chain	Residue	Modelled	Actual	Comment	Reference
A	401	LYS	GLU	ENGINEERED MUTATION	UNP P0AFG8
B	401	LYS	GLU	ENGINEERED MUTATION	UNP P0AFG8

- Molecule 2 is MAGNESIUM ION (three-letter code: MG) (formula: Mg).

Mol	Chain	Residues	Atoms		ZeroOcc	AltConf
2	B	1	Total	Mg	0	0
			1	1		
2	A	1	Total	Mg	0	0
			1	1		

- Molecule 3 is 3-[(4-AMINO-2-METHYLPYRIMIDIN-5-YL)METHYL]-2-[(1S)-1-HYDROXY-1-[(R)-HYDROXY(METHOXY)PHOSPHORYL]ETHYL]-5-(2-[(S)-HYDROXY(PHOSPHONOXY)PHOSPHORYL]OXY)ETHYL)-4-METHYL-1,3-THIAZOL-3-IUM (three-letter code: TDK) (formula: C₁₅H₂₆N₄O₁₁P₃S).



Mol	Chain	Residues	Atoms						ZeroOcc	AltConf
3	A	1	Total	C	N	O	P	S	0	0
			34	15	4	11	3	1		
3	B	1	Total	C	N	O	P	S	0	0
			34	15	4	11	3	1		

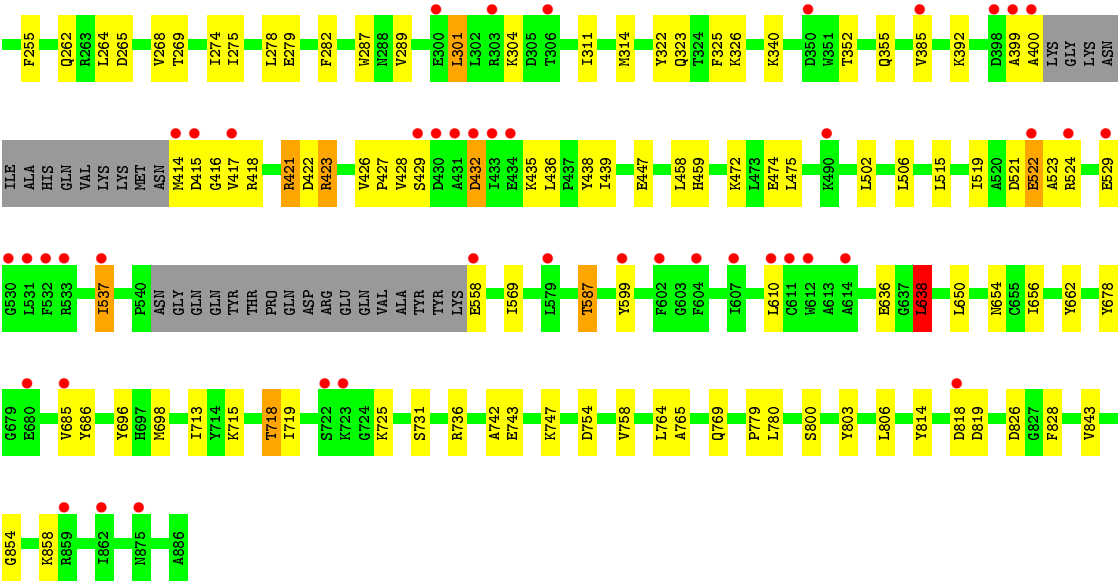
- Molecule 4 is water.

Mol	Chain	Residues	Atoms		ZeroOcc	AltConf
4	A	186	Total	O	0	0
			186	186		
4	B	208	Total	O	0	0
			208	208		

These plots are drawn for all protein, RNA and DNA chains in the entry. The first graphic for a chain summarises the proportions of the various outlier classes displayed in the second graphic. The second graphic shows the sequence view annotated by issues in geometry and electron density. Residues are color-coded according to the number of geometric quality criteria for which they contain at least one outlier: green = 0, yellow = 1, orange = 2 and red = 3 or more. A red dot above a residue indicates a poor fit to the electron density ($RSRZ > 2$). Stretches of 2 or more consecutive residues without any outlier are shown as a green connector. Residues present in the sample, but not in the model, are shown in grey.

- Chain A:
-
- 72% 17% 10%
- 7%
- 0.15
0.10
0.05
0.00
- 1 2 3 4 5 6 7 8 9 10 11 12 13 14 15 16 17 18 19 20 21 22 23 24 25 26 27 28 29 30 31 32 33 34 35 36 37 38 39 40 41 42 43 44 45 46 47 48 49 50 51 52 53 54 55 56 57 58 59 60 61 62 63 64 65 66 67 68 69 70 71 72 73 74 75 76 77 78 79 80 81 82 83 84 85 86 87 88 89 90 91 92 93 94 95 96 97 98 99 100
- ARG
GLU
ARG
PHE
PRO
ASN
ASP
VAL
ASP
PRO
ILE
GLU
THR
ARG
ASP
TRP
LEU
GLN
ALA
ILE
GLU
SER
VAL
ILE
ARG
GLU
VAL
ILE
ANG
GLU
GLY
VAL
GLU
ANG
ALA
GLN
TVR
LEU
ILE
ASP
GLN
LEU
LEU
ALA
GLU
ALA
LYS
GLY
VAL
ASN
VAL
ALA
ALA
GLY
THR
GLY
GLY
N271
D265
I56
I63
V74
- K509
K512
P517
L518
L519
A520
D521
E522
A523
R524
E530
L531
F532
R533
Q534
P540
ASN
GLY
GLN
GLN
TYR
THR
PRO
GLN
ASP
ARG
GLU
GLN
VAL
ALA
TVR
LYS
E558
D559
E560
K561
L564
L569
Y598
L607
R608
N634
G635
E636
E637
L638
R659
G660
G663
I662
R664
R665
- L359
Y370
K374
K375
E378
K382
E397
D398
A399
A400
LYS
GLY
LYS
ASN
ILE
ALA
HIS
GLN
VAL
LYS
LYS
MET
F325
K326
S327
D415
G416
V417
R418
H419
I420
A421
V426
P427
V428
I433
L436
P437
Y438
I439
L462
P463
S464
Q479
D480
A497
L502
N503
- L278
G286
R297
E300
L301
L302
R303
K304
D305
T306
S307
G308
K309
L310
I311
M314
V318
D321
Y322
K323
T324
F325
K326
S327
D329
G330
A331
H332
Y332
V333
R334
E335
H336
F337
F338
G339
K340
Y341
E342
E343
T344
A345
A346
L347
V348
A349
D350
K351
T352
D353
E354
Q355
I356
- E78
R128
N129
E130
Q131
Q140
I143
S144
P145
Q159
E160
G171
Y177
H178
H179
L182
W187
Q188
F189
P190
T191
V192
S193
M194
G195
L196
G197
P198
L211
E212
H213
R214
G215
L216
L228
R239
I242
Q262
R263
L264
D265
N271
G272
E277
- K364
K365
V366
V367
A368
N382
L385
A386
E383
N384
V385
L382
L385
E385
L386
R389
G390
I391
I392
I393
I394
L395
L396
L397
L398
L399
L400
L401
L402
L403
L404
L405
L406
L407
L408
L409
L410
L411
L412
L413
L414
L415
L416
L417
L418
L419
L420
L421
L422
L423
L424
L425
L426
L427
L428
L429
L430
L431
L432
L433
L434
L435
L436
L437
L438
L439
L440
L441
L442
L443
L444
L445
L446
L447
L448
L449
L450
L451
L452
L453
L454
L455
L456
L457
L458
L459
L460
L461
L462
L463
L464
L465
L466
L467
L468
L469
L470
L471
L472
L473
L474
L475
L476
L477
L478
L479
L480
L481
L482
L483
L484
L485
L486
L487
L488
L489
L490
L491
L492
L493
L494
L495
L496
L497
L498
L499
L500
L501
L502
L503
L504
L505
L506
L507
L508
L509
L510
L511
L512
L513
L514
L515
L516
L517
L518
L519
L520
L521
L522
L523
L524
L525
L526
L527
L528
L529
L530
L531
L532
L533
L534
L535
L536
L537
L538
L539
L540
L541
L542
L543
L544
L545
L546
L547
L548
L549
L550
L551
L552
L553
L554
L555
L556
L557
L558
L559
L560
L561
L562
L563
L564
L565
L566
L567
L568
L569
L570
L571
L572
L573
L574
L575
L576
L577
L578
L579
L580
L581
L582
L583
L584
L585
L586
L587
L588
L589
L590
L591
L592
L593
L594
L595
L596
L597
L598
L599
L600
L601
L602
L603
L604
L605
L606
L607
L608
L609
L610
L611
L612
L613
L614
L615
L616
L617
L618
L619
L620
L621
L622
L623
L624
L625
L626
L627
L628
L629
L630
L631
L632
L633
L634
L635
L636
L637
L638
L639
L640
L641
L642
L643
L644
L645
L646
L647
L648
L649
L650
L651
L652
L653
L654
L655
L656
L657
L658
L659
L660
L661
L662
L663
L664
L665
L666
L667
L668
L669
L670
L671
L672
L673
L674
L675
L676
L677
L678
L679
L680
L681
L682
L683
L684
L685
L686
L687
L688
L689
L690
L691
L692
L693
L694
L695
L696
L697
L698
L699
L700
L701
L702
L703
L704
L705
L706
L707
L708
L709
L710
L711
L712
L713
L714
L715
L716
L717
L718
L719
L720
L721
L722
L723
L724
L725
L726
L727
L728
L729
L730
L731
L732
L733
L734
L735
L736
L737
L738
L739
L740
L741
L742
L743
L744
L745
L746
L747
L748
L749
L750
L751
L752
L7

- [illegible]



4 Data and refinement statistics

Property	Value	Source
Space group	P 1 21 1	Depositor
Cell constants a, b, c, α , β , γ	81.61Å 142.11Å 82.14Å 90.00° 102.68° 90.00°	Depositor
Resolution (Å)	47.53 – 1.77 47.53 – 1.77	Depositor EDS
% Data completeness (in resolution range)	97.1 (47.53-1.77) 90.7 (47.53-1.77)	Depositor EDS
R_{merge}	0.11	Depositor
R_{sym}	0.11	Depositor
$\langle I/\sigma(I) \rangle$ ¹	2.50 (at 1.77Å)	Xtriage
Refinement program	CNS 1.1	Depositor
R, R_{free}	0.225 , 0.255 0.217 , 0.247	Depositor DCC
R_{free} test set	8037 reflections (5.02%)	wwPDB-VP
Wilson B-factor (Å ²)	19.5	Xtriage
Anisotropy	0.181	Xtriage
Bulk solvent k_{sol} (e/Å ³), B_{sol} (Å ²)	0.35 , 38.3	EDS
L-test for twinning ²	$\langle L \rangle = 0.49$, $\langle L^2 \rangle = 0.32$	Xtriage
Estimated twinning fraction	0.017 for l,-k,h	Xtriage
F_o, F_c correlation	0.94	EDS
Total number of atoms	13146	wwPDB-VP
Average B, all atoms (Å ²)	22.0	wwPDB-VP

Xtriage's analysis on translational NCS is as follows: *The largest off-origin peak in the Patterson function is 3.09% of the height of the origin peak. No significant pseudotranslation is detected.*

¹Intensities estimated from amplitudes.

²Theoretical values of $\langle |L| \rangle$, $\langle L^2 \rangle$ for acentric reflections are 0.5, 0.333 respectively for untwinned datasets, and 0.375, 0.2 for perfectly twinned datasets.

5 Model quality [i](#)

5.1 Standard geometry [i](#)

Bond lengths and bond angles in the following residue types are not validated in this section: TDK, MG

The Z score for a bond length (or angle) is the number of standard deviations the observed value is removed from the expected value. A bond length (or angle) with $|Z| > 5$ is considered an outlier worth inspection. RMSZ is the root-mean-square of all Z scores of the bond lengths (or angles).

Mol	Chain	Bond lengths		Bond angles	
		RMSZ	$\# Z > 5$	RMSZ	$\# Z > 5$
1	A	0.55	0/6484	0.74	3/8766 (0.0%)
1	B	0.58	0/6484	0.75	3/8766 (0.0%)
All	All	0.56	0/12968	0.75	6/17532 (0.0%)

Chiral center outliers are detected by calculating the chiral volume of a chiral center and verifying if the center is modelled as a planar moiety or with the opposite hand. A planarity outlier is detected by checking planarity of atoms in a peptide group, atoms in a mainchain group or atoms of a sidechain that are expected to be planar.

Mol	Chain	#Chirality outliers	#Planarity outliers
1	A	0	2
1	B	0	3
All	All	0	5

There are no bond length outliers.

The worst 5 of 6 bond angle outliers are listed below:

Mol	Chain	Res	Type	Atoms	Z	Observed(°)	Ideal(°)
1	B	638	LEU	CA-CB-CG	6.89	131.15	115.30
1	A	214	ARG	NE-CZ-NH1	6.00	123.30	120.30
1	B	171	GLY	N-CA-C	5.66	127.26	113.10
1	A	214	ARG	NE-CZ-NH2	-5.56	117.52	120.30
1	A	171	GLY	N-CA-C	5.54	126.95	113.10

There are no chirality outliers.

All (5) planarity outliers are listed below:

Mol	Chain	Res	Type	Group
1	A	598	TYR	Sidechain

Continued on next page...

Continued from previous page...

Mol	Chain	Res	Type	Group
1	A	814	TYR	Sidechain
1	B	678	TYR	Sidechain
1	B	803	TYR	Sidechain
1	B	814	TYR	Sidechain

5.2 Too-close contacts ⓘ

In the following table, the Non-H and H(model) columns list the number of non-hydrogen atoms and hydrogen atoms in the chain respectively. The H(added) column lists the number of hydrogen atoms added and optimized by MolProbity. The Clashes column lists the number of clashes within the asymmetric unit, whereas Symm-Clashes lists symmetry related clashes.

Mol	Chain	Non-H	H(model)	H(added)	Clashes	Symm-Clashes
1	A	6341	0	6179	151	0
1	B	6341	0	6179	125	0
2	A	1	0	0	0	0
2	B	1	0	0	0	0
3	A	34	0	22	7	0
3	B	34	0	22	6	0
4	A	186	0	0	1	0
4	B	208	0	0	4	0
All	All	13146	0	12402	260	0

The all-atom clashscore is defined as the number of clashes found per 1000 atoms (including hydrogen atoms). The all-atom clashscore for this structure is 10.

The worst 5 of 260 close contacts within the same asymmetric unit are listed below, sorted by their clash magnitude.

Atom-1	Atom-2	Interatomic distance (Å)	Clash overlap (Å)
1:B:656:ILE:HG12	1:B:685:VAL:HG21	1.37	1.03
1:A:182:LEU:HD11	1:B:638:LEU:HD23	1.45	0.97
1:B:311:ILE:HA	1:B:314:MET:HE2	1.52	0.91
1:B:800:SER:OG	1:B:843:VAL:HG13	1.71	0.91
1:A:418:ARG:HD2	1:A:433:ILE:HD13	1.52	0.90

There are no symmetry-related clashes.

5.3 Torsion angles

5.3.1 Protein backbone

In the following table, the Percentiles column shows the percent Ramachandran outliers of the chain as a percentile score with respect to all X-ray entries followed by that with respect to entries of similar resolution.

The Analysed column shows the number of residues for which the backbone conformation was analysed, and the total number of residues.

Mol	Chain	Analysed	Favoured	Allowed	Outliers	Percentiles	
1	A	795/886 (90%)	762 (96%)	30 (4%)	3 (0%)	34	19
1	B	795/886 (90%)	762 (96%)	33 (4%)	0	100	100
All	All	1590/1772 (90%)	1524 (96%)	63 (4%)	3 (0%)	47	32

All (3) Ramachandran outliers are listed below:

Mol	Chain	Res	Type
1	A	398	ASP
1	A	399	ALA
1	A	326	LYS

5.3.2 Protein sidechains

In the following table, the Percentiles column shows the percent sidechain outliers of the chain as a percentile score with respect to all X-ray entries followed by that with respect to entries of similar resolution.

The Analysed column shows the number of residues for which the sidechain conformation was analysed, and the total number of residues.

Mol	Chain	Analysed	Rotameric	Outliers	Percentiles	
1	A	665/735 (90%)	648 (97%)	17 (3%)	46	29
1	B	665/735 (90%)	642 (96%)	23 (4%)	36	19
All	All	1330/1470 (90%)	1290 (97%)	40 (3%)	41	24

5 of 40 residues with a non-rotameric sidechain are listed below:

Mol	Chain	Res	Type
1	B	77	LEU
1	B	278	LEU
1	B	718	THR

Continued on next page...

Continued from previous page...

Mol	Chain	Res	Type
1	B	211	LEU
1	B	301	LEU

Some sidechains can be flipped to improve hydrogen bonding and reduce clashes. All (4) such sidechains are listed below:

Mol	Chain	Res	Type
1	A	336	HIS
1	A	479	GLN
1	B	323	GLN
1	B	466	GLN

5.3.3 RNA [i](#)

There are no RNA molecules in this entry.

5.4 Non-standard residues in protein, DNA, RNA chains [i](#)

There are no non-standard protein/DNA/RNA residues in this entry.

5.5 Carbohydrates [i](#)

There are no carbohydrates in this entry.

5.6 Ligand geometry [i](#)

Of 4 ligands modelled in this entry, 2 are monoatomic - leaving 2 for Mogul analysis.

In the following table, the Counts columns list the number of bonds (or angles) for which Mogul statistics could be retrieved, the number of bonds (or angles) that are observed in the model and the number of bonds (or angles) that are defined in the Chemical Component Dictionary. The Link column lists molecule types, if any, to which the group is linked. The Z score for a bond length (or angle) is the number of standard deviations the observed value is removed from the expected value. A bond length (or angle) with $|Z| > 2$ is considered an outlier worth inspection. RMSZ is the root-mean-square of all Z scores of the bond lengths (or angles).

Mol	Type	Chain	Res	Link	Bond lengths			Bond angles		
					Counts	RMSZ	# Z > 2	Counts	RMSZ	# Z > 2
3	TDK	A	887	2	29,35,35	1.97	3 (10%)	36,55,55	1.60	7 (19%)
3	TDK	B	887	2	29,35,35	1.85	3 (10%)	36,55,55	1.49	6 (16%)

In the following table, the Chirals column lists the number of chiral outliers, the number of chiral centers analysed, the number of these observed in the model and the number defined in the Chemical Component Dictionary. Similar counts are reported in the Torsion and Rings columns. '-' means no outliers of that kind were identified.

Mol	Type	Chain	Res	Link	Chirals	Torsions	Rings
3	TDK	A	887	2	-	4/26/35/35	0/2/2/2
3	TDK	B	887	2	-	3/26/35/35	0/2/2/2

The worst 5 of 6 bond length outliers are listed below:

Mol	Chain	Res	Type	Atoms	Z	Observed(Å)	Ideal(Å)
3	A	887	TDK	C6-C5	-8.25	1.47	1.50
3	B	887	TDK	C6-C5	-7.31	1.47	1.50
3	A	887	TDK	PC-OM3	-3.21	1.50	1.56
3	B	887	TDK	C6'-C5'	-3.18	1.31	1.37
3	B	887	TDK	PC-OM3	-2.85	1.50	1.56

The worst 5 of 13 bond angle outliers are listed below:

Mol	Chain	Res	Type	Atoms	Z	Observed(°)	Ideal(°)
3	A	887	TDK	C6-C5-C4	4.45	131.00	127.43
3	B	887	TDK	C6-C5-C4	3.85	130.52	127.43
3	A	887	TDK	OM4-PC-CMA	-3.63	109.83	113.53
3	B	887	TDK	OM4-PC-CMA	-3.20	110.28	113.53
3	A	887	TDK	OM2-PC-OM4	-2.93	108.25	114.58

There are no chirality outliers.

5 of 7 torsion outliers are listed below:

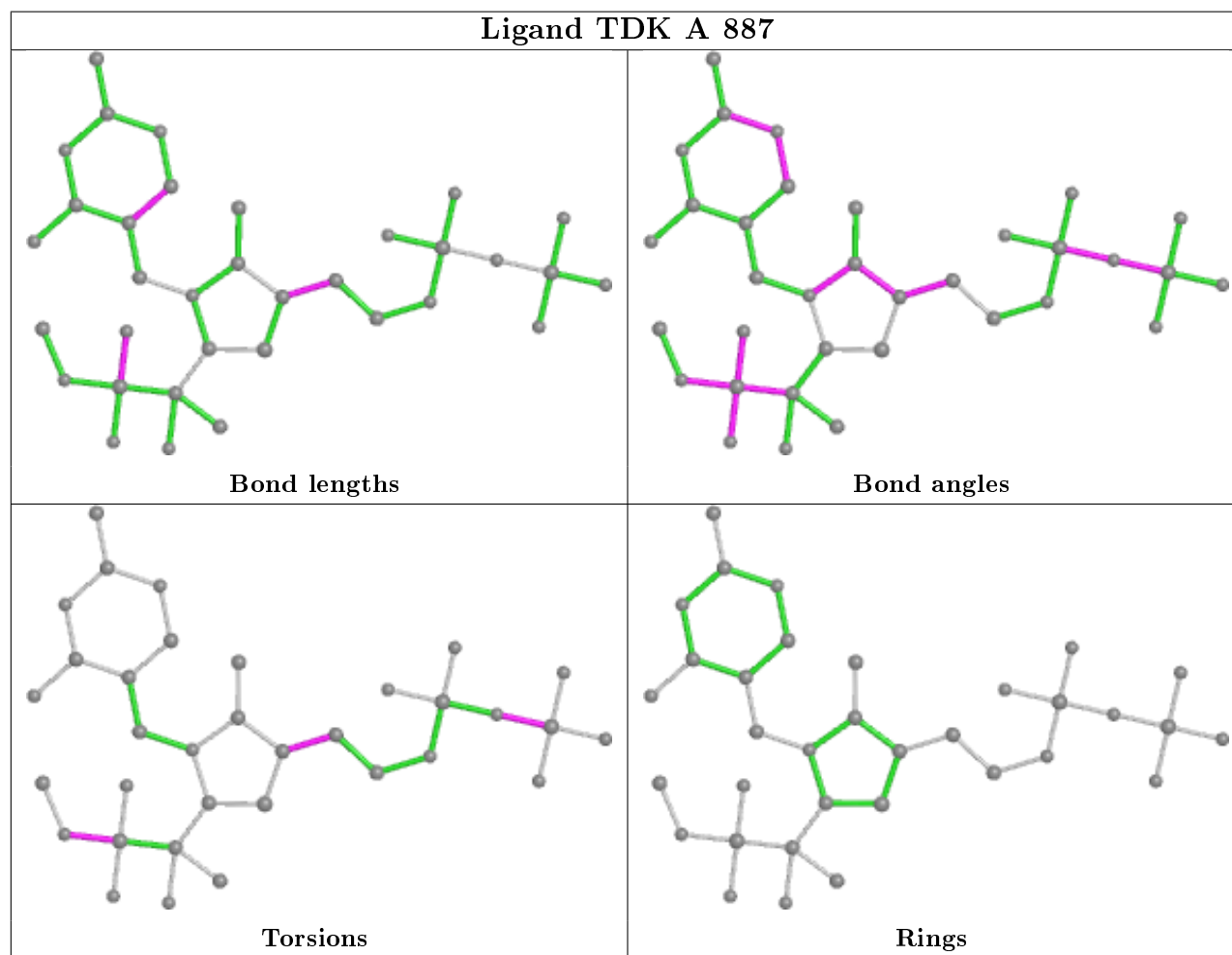
Mol	Chain	Res	Type	Atoms
3	A	887	TDK	PA-O3A-PB-O2B
3	B	887	TDK	PA-O3A-PB-O2B
3	A	887	TDK	CMC-OM2-PC-OM4
3	A	887	TDK	PA-O3A-PB-O3B
3	B	887	TDK	PA-O3A-PB-O3B

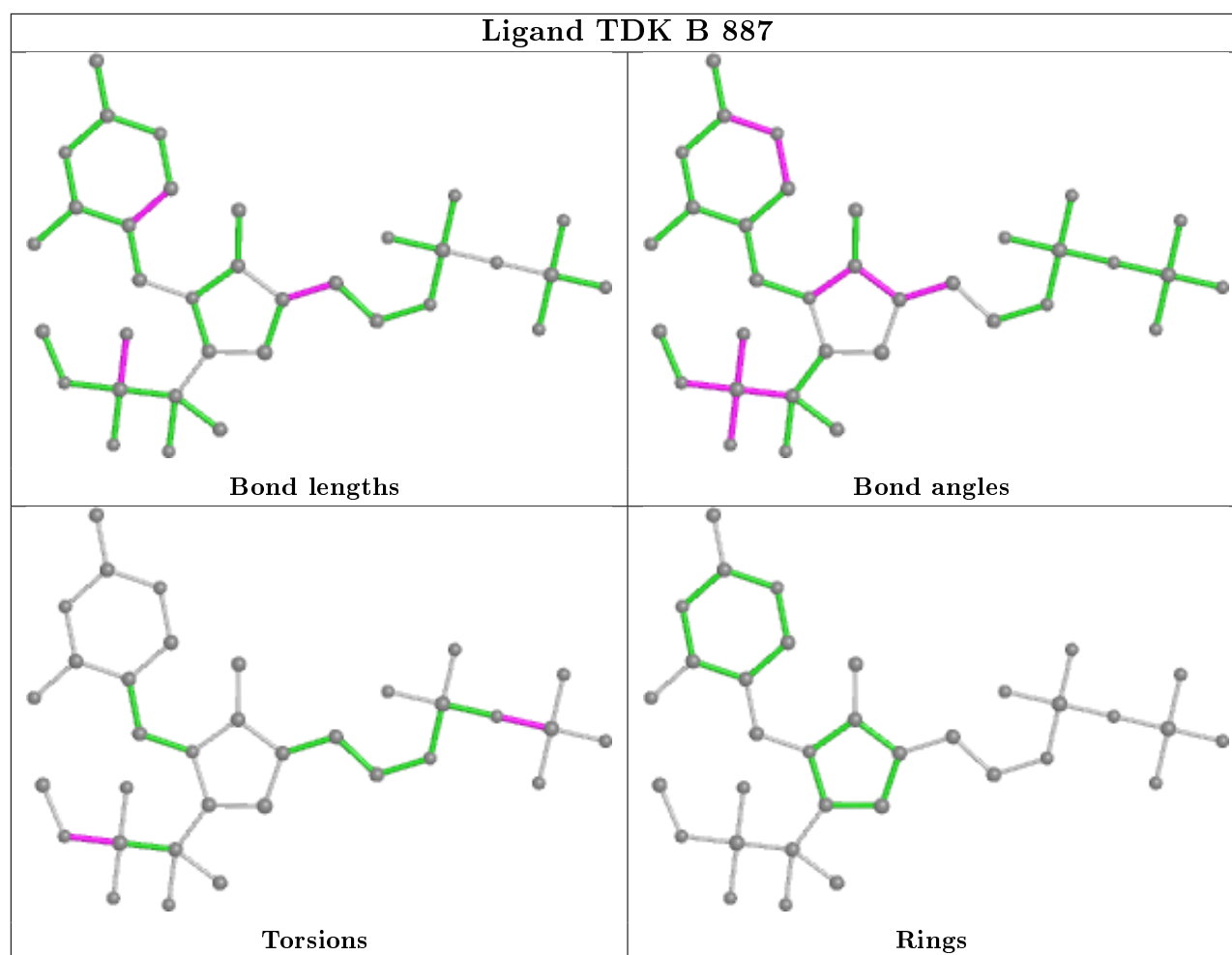
There are no ring outliers.

2 monomers are involved in 13 short contacts:

Mol	Chain	Res	Type	Clashes	Symm-Clashes
3	A	887	TDK	7	0
3	B	887	TDK	6	0

The following is a two-dimensional graphical depiction of Mogul quality analysis of bond lengths, bond angles, torsion angles, and ring geometry for all instances of the Ligand of Interest. In addition, ligands with molecular weight > 250 and outliers as shown on the validation Tables will also be included. For torsion angles, if less than 5% of the Mogul distribution of torsion angles is within 10 degrees of the torsion angle in question, then that torsion angle is considered an outlier. Any bond that is central to one or more torsion angles identified as an outlier by Mogul will be highlighted in the graph. For rings, the root-mean-square deviation (RMSD) between the ring in question and similar rings identified by Mogul is calculated over all ring torsion angles. If the average RMSD is greater than 60 degrees and the minimal RMSD between the ring in question and any Mogul-identified rings is also greater than 60 degrees, then that ring is considered an outlier. The outliers are highlighted in purple. The color gray indicates Mogul did not find sufficient equivalents in the CSD to analyse the geometry.





5.7 Other polymers [i](#)

There are no such residues in this entry.

5.8 Polymer linkage issues [i](#)

There are no chain breaks in this entry.

6 Fit of model and data [i](#)

6.1 Protein, DNA and RNA chains [i](#)

In the following table, the column labelled ‘#RSRZ> 2’ contains the number (and percentage) of RSRZ outliers, followed by percent RSRZ outliers for the chain as percentile scores relative to all X-ray entries and entries of similar resolution. The OWAB column contains the minimum, median, 95th percentile and maximum values of the occupancy-weighted average B-factor per residue. The column labelled ‘Q< 0.9’ lists the number of (and percentage) of residues with an average occupancy less than 0.9.

Mol	Chain	Analysed	<RSRZ>	#RSRZ>2	OWAB(Å ²)	Q<0.9
1	A	801/886 (90%)	0.49	65 (8%) 12 11	14, 22, 37, 42	0
1	B	801/886 (90%)	0.41	49 (6%) 21 20	12, 20, 31, 41	0
All	All	1602/1772 (90%)	0.45	114 (7%) 16 15	12, 21, 35, 42	0

The worst 5 of 114 RSRZ outliers are listed below:

Mol	Chain	Res	Type	RSRZ
1	B	399	ALA	12.2
1	B	414	MET	8.8
1	B	400	ALA	8.4
1	A	400	ALA	8.0
1	A	349	ALA	7.1

6.2 Non-standard residues in protein, DNA, RNA chains [i](#)

There are no non-standard protein/DNA/RNA residues in this entry.

6.3 Carbohydrates [i](#)

There are no carbohydrates in this entry.

6.4 Ligands [i](#)

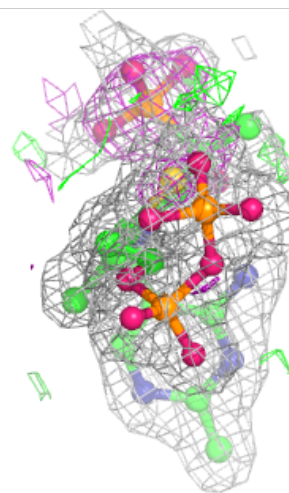
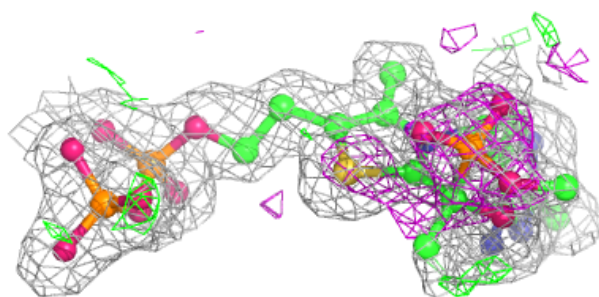
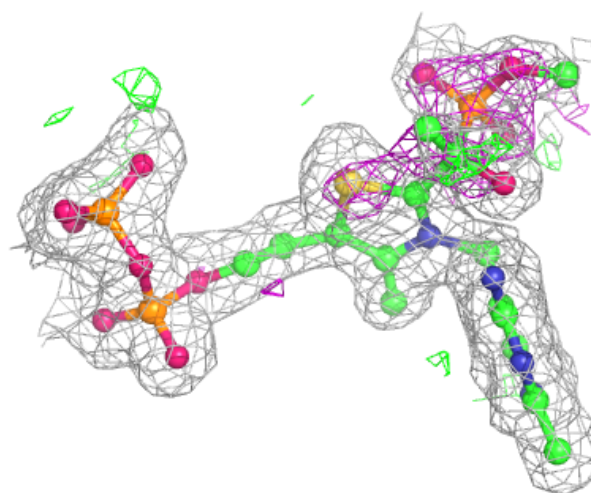
In the following table, the Atoms column lists the number of modelled atoms in the group and the number defined in the chemical component dictionary. The B-factors column lists the minimum, median, 95th percentile and maximum values of B factors of atoms in the group. The column labelled ‘Q< 0.9’ lists the number of atoms with occupancy less than 0.9.

Mol	Type	Chain	Res	Atoms	RSCC	RSR	B-factors(\AA^2)	Q<0.9
3	TDK	B	887	34/34	0.86	0.17	20,23,27,27	0
3	TDK	A	887	34/34	0.87	0.15	22,25,28,28	0
2	MG	A	888	1/1	0.97	0.05	21,21,21,21	0
2	MG	B	888	1/1	0.98	0.04	19,19,19,19	0

The following is a graphical depiction of the model fit to experimental electron density of all instances of the Ligand of Interest. In addition, ligands with molecular weight > 250 and outliers as shown on the geometry validation Tables will also be included. Each fit is shown from different orientation to approximate a three-dimensional view.

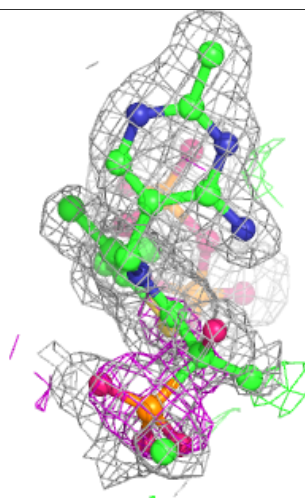
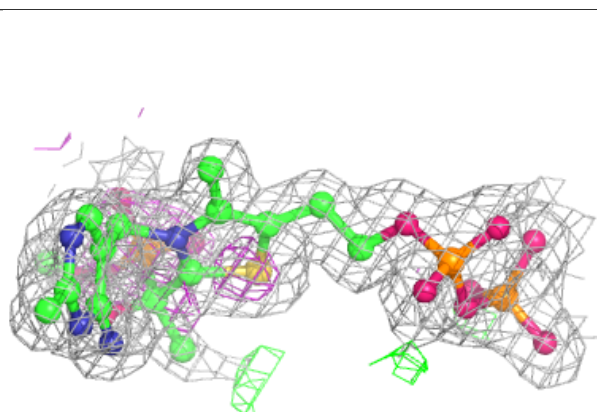
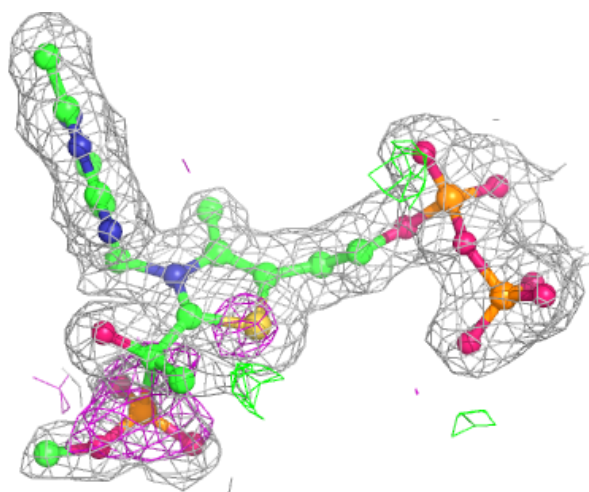
Electron density around TDK B 887:

2mF_o-DF_c (at 0.7 rmsd) in gray
mF_o-DF_c (at 3 rmsd) in purple (negative)
and green (positive)



Electron density around TDK A 887:

$2mF_o-DF_c$ (at 0.7 rmsd) in gray
 mF_o-DF_c (at 3 rmsd) in purple (negative)
and green (positive)



6.5 Other polymers [i](#)

There are no such residues in this entry.