



Full wwPDB X-ray Structure Validation Report ⓘ

May 15, 2020 – 02:16 pm BST

PDB ID : 3QUP
Title : Inhibitor bound structure of the kinase domain of the murine receptor tyrosine kinase TYRO3 (Sky)
Authors : Ohren, J.F.
Deposited on : 2011-02-24
Resolution : 1.90 Å(reported)

This is a Full wwPDB X-ray Structure Validation Report for a publicly released PDB entry.

We welcome your comments at validation@mail.wwpdb.org

A user guide is available at

<https://www.wwpdb.org/validation/2017/XrayValidationReportHelp>

with specific help available everywhere you see the ⓘ symbol.

The following versions of software and data (see [references ⓘ](#)) were used in the production of this report:

MolProbity	:	4.02b-467
Mogul	:	1.8.5 (274361), CSD as541be (2020)
Xtriage (Phenix)	:	1.13
EDS	:	2.11
buster-report	:	1.1.7 (2018)
Percentile statistics	:	20191225.v01 (using entries in the PDB archive December 25th 2019)
Refmac	:	5.8.0158
CCP4	:	7.0.044 (Gargrove)
Ideal geometry (proteins)	:	Engh & Huber (2001)
Ideal geometry (DNA, RNA)	:	Parkinson et al. (1996)
Validation Pipeline (wwPDB-VP)	:	2.11

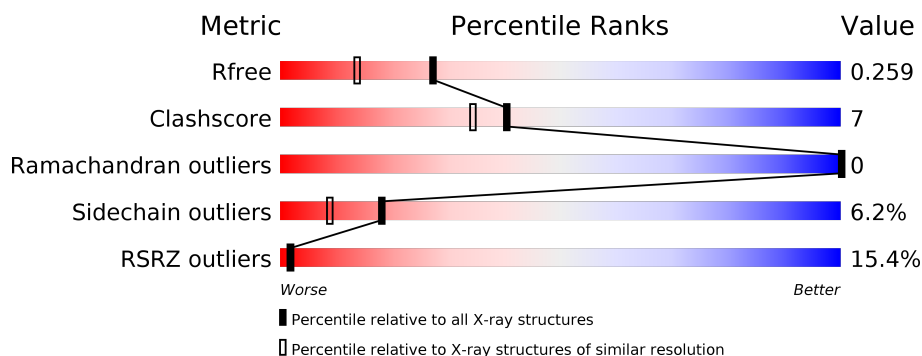
1 Overall quality at a glance

The following experimental techniques were used to determine the structure:

X-RAY DIFFRACTION

The reported resolution of this entry is 1.90 Å.

Percentile scores (ranging between 0-100) for global validation metrics of the entry are shown in the following graphic. The table shows the number of entries on which the scores are based.



Metric	Whole archive (#Entries)	Similar resolution (#Entries, resolution range(Å))
R_{free}	130704	6207 (1.90-1.90)
Clashscore	141614	6847 (1.90-1.90)
Ramachandran outliers	138981	6760 (1.90-1.90)
Sidechain outliers	138945	6760 (1.90-1.90)
RSRZ outliers	127900	6082 (1.90-1.90)

The table below summarises the geometric issues observed across the polymeric chains and their fit to the electron density. The red, orange, yellow and green segments on the lower bar indicate the fraction of residues that contain outliers for ≥ 3 , 2, 1 and 0 types of geometric quality criteria respectively. A grey segment represents the fraction of residues that are not modelled. The numeric value for each fraction is indicated below the corresponding segment, with a dot representing fractions $\leq 5\%$. The upper red bar (where present) indicates the fraction of residues that have poor fit to the electron density. The numeric value is given above the bar.

Mol	Chain	Length	Quality of chain
1	A	323	<div> <div>11%</div> <div>61%</div> <div>12%</div> <div>•</div> <div>25%</div> </div>

2 Entry composition [i](#)

There are 3 unique types of molecules in this entry. The entry contains 2023 atoms, of which 0 are hydrogens and 0 are deuteriums.

In the tables below, the ZeroOcc column contains the number of atoms modelled with zero occupancy, the AltConf column contains the number of residues with at least one atom in alternate conformation and the Trace column contains the number of residues modelled with at most 2 atoms.

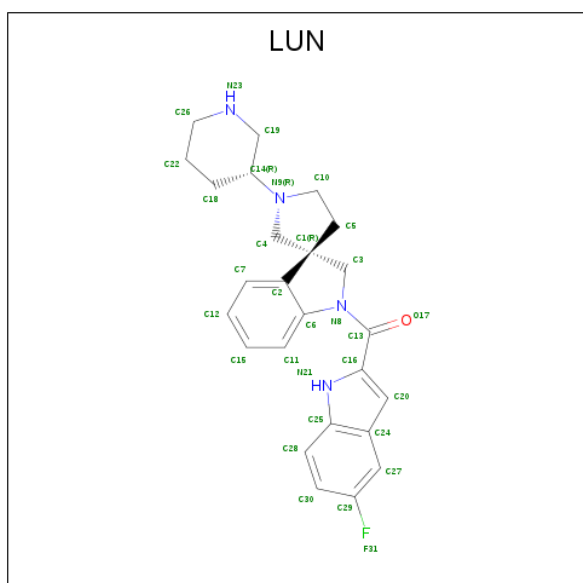
- Molecule 1 is a protein called Tyrosine-protein kinase receptor TYRO3.

Mol	Chain	Residues	Atoms					ZeroOcc	AltConf	Trace
			Total	C	N	O	S			
1	A	241	1916	1232	321	342	21	0	0	0

There are 7 discrepancies between the modelled and reference sequences:

Chain	Residue	Modelled	Actual	Comment	Reference
A	484	MET	-	INITIATING METHIONINE	UNP P55144
A	801	HIS	-	EXPRESSION TAG	UNP P55144
A	802	HIS	-	EXPRESSION TAG	UNP P55144
A	803	HIS	-	EXPRESSION TAG	UNP P55144
A	804	HIS	-	EXPRESSION TAG	UNP P55144
A	805	HIS	-	EXPRESSION TAG	UNP P55144
A	806	HIS	-	EXPRESSION TAG	UNP P55144

- Molecule 2 is (5-fluoro-1H-indol-2-yl)[(3R)-1'-[(3R)-piperidin-3-yl]spiro[indole-3,3'-pyrrolidin]-1(2H)-yl]methanone (three-letter code: LUN) (formula: C₂₅H₂₇FN₄O).



Mol	Chain	Residues	Atoms					ZeroOcc	AltConf
2	A	1	Total	C	F	N	O	0	0
			31	25	1	4	1		

- Molecule 3 is water.

Mol	Chain	Residues	Atoms		ZeroOcc	AltConf
3	A	76	Total	O	0	0
			76	76		

These plots are drawn for all protein, RNA and DNA chains in the entry. The first graphic for a chain summarises the proportions of the various outlier classes displayed in the second graphic. The second graphic shows the sequence view annotated by issues in geometry and electron density. Residues are color-coded according to the number of geometric quality criteria for which they contain at least one outlier: green = 0, yellow = 1, orange = 2 and red = 3 or more. A red dot above a residue indicates a poor fit to the electron density ($RSRZ > 2$). Stretches of 2 or more consecutive residues without any outlier are shown as a green connector. Residues present in the sample, but not in the model, are shown in grey.

- Chain A:
-
- 11% 61% 12% 25%
- LEU TYR ILE ILE GLU ARG ARG HIS HIS HIS HIS HIS HIS
- G665 L666 SER ARG LYS ILE TYR SER GLY ASP TYR TYR ARG GLN CYS ALA SER L684 L689 E692 G709 M712 I715 M716 T717 Q720 G725 Y732 M733 I736 E749 H755 C758 R766 G781 H782 LEU SER VAL LEU SER THR SER GLN ASP PRO
- E554 F555 L556 R557 A560 C561 M562 K563 H567 F568 R569 K572 L573 W574 G575 S577 L578 R579 S580 ARG ALA LYS GLY ARG LEU LEU PRO I588 P589 I592 L593 S608 R609 I610 GLY GLU ASN P614 F615 N616 L617 L622 R639 H643 R644 C651 E655 V659
- MET LEU ASP SER LEU GLY ILE SER ASP GLU LEU LYS LYS LEU D500 V501 L502 I503 P504 GLU GLN GLN F508 T509 L510 G511 R512 M513 E518 F519 R523 E524 A525 Q526 L527 LYS GLN GLU ASP GLY SER PHE V535 L542 LYS ALA ASP ILE ILE S549 S550 G551 I552 F553

4 Data and refinement statistics

Property	Value	Source
Space group	P 1 21 1	Depositor
Cell constants a, b, c, α , β , γ	46.99Å 57.34Å 60.56Å 90.00° 100.30° 90.00°	Depositor
Resolution (Å)	41.31 – 1.90 41.32 – 1.90	Depositor EDS
% Data completeness (in resolution range)	98.3 (41.31-1.90) 98.3 (41.32-1.90)	Depositor EDS
R_{merge}	(Not available)	Depositor
R_{sym}	0.08	Depositor
$\langle I/\sigma(I) \rangle$ ¹	3.18 (at 1.89Å)	Xtriage
Refinement program	REFMAC 5.5.0109	Depositor
R, R_{free}	0.238 , 0.262 0.235 , 0.259	Depositor DCC
R_{free} test set	1276 reflections (5.17%)	wwPDB-VP
Wilson B-factor (Å ²)	33.3	Xtriage
Anisotropy	0.135	Xtriage
Bulk solvent k_{sol} (e/Å ³), B_{sol} (Å ²)	0.39 , 50.5	EDS
L-test for twinning ²	$\langle L \rangle = 0.49$, $\langle L^2 \rangle = 0.32$	Xtriage
Estimated twinning fraction	No twinning to report.	Xtriage
F_o, F_c correlation	0.94	EDS
Total number of atoms	2023	wwPDB-VP
Average B, all atoms (Å ²)	42.0	wwPDB-VP

Xtriage's analysis on translational NCS is as follows: *The largest off-origin peak in the Patterson function is 6.91% of the height of the origin peak. No significant pseudotranslation is detected.*

¹Intensities estimated from amplitudes.

²Theoretical values of $\langle |L| \rangle$, $\langle L^2 \rangle$ for acentric reflections are 0.5, 0.333 respectively for untwinned datasets, and 0.375, 0.2 for perfectly twinned datasets.

5 Model quality [i](#)

5.1 Standard geometry [i](#)

Bond lengths and bond angles in the following residue types are not validated in this section: LUN

The Z score for a bond length (or angle) is the number of standard deviations the observed value is removed from the expected value. A bond length (or angle) with $|Z| > 5$ is considered an outlier worth inspection. RMSZ is the root-mean-square of all Z scores of the bond lengths (or angles).

Mol	Chain	Bond lengths		Bond angles	
		RMSZ	$\# Z > 5$	RMSZ	$\# Z > 5$
1	A	0.63	0/1955	0.68	3/2636 (0.1%)

There are no bond length outliers.

All (3) bond angle outliers are listed below:

Mol	Chain	Res	Type	Atoms	Z	Observed($^{\circ}$)	Ideal($^{\circ}$)
1	A	766	ARG	NE-CZ-NH1	6.66	123.63	120.30
1	A	593	LEU	CA-CB-CG	5.97	129.02	115.30
1	A	766	ARG	NE-CZ-NH2	-5.43	117.59	120.30

There are no chirality outliers.

There are no planarity outliers.

5.2 Too-close contacts [i](#)

In the following table, the Non-H and H(model) columns list the number of non-hydrogen atoms and hydrogen atoms in the chain respectively. The H(added) column lists the number of hydrogen atoms added and optimized by MolProbity. The Clashes column lists the number of clashes within the asymmetric unit, whereas Symm-Clashes lists symmetry related clashes.

Mol	Chain	Non-H	H(model)	H(added)	Clashes	Symm-Clashes
1	A	1916	0	1909	27	0
2	A	31	0	27	1	0
3	A	76	0	0	1	0
All	All	2023	0	1936	28	0

The all-atom clashscore is defined as the number of clashes found per 1000 atoms (including hydrogen atoms). The all-atom clashscore for this structure is 7.

All (28) close contacts within the same asymmetric unit are listed below, sorted by their clash magnitude.

Atom-1	Atom-2	Interatomic distance (Å)	Clash overlap (Å)
1:A:622:LEU:HB3	1:A:716:MET:HE3	1.49	0.94
1:A:709:GLY:HA2	1:A:712:MET:CE	2.07	0.85
1:A:715:ILE:HG22	1:A:716:MET:HE2	1.56	0.84
1:A:622:LEU:HB3	1:A:716:MET:CE	2.12	0.80
1:A:709:GLY:HA2	1:A:712:MET:HE2	1.68	0.76
1:A:567:HIS:HD2	1:A:569:HIS:H	1.34	0.76
1:A:567:HIS:CD2	1:A:569:HIS:H	2.05	0.73
1:A:709:GLY:HA2	1:A:712:MET:HE3	1.73	0.70
1:A:715:ILE:HG22	1:A:716:MET:CE	2.22	0.69
1:A:717:THR:O	1:A:720:GLN:HG3	1.96	0.66
1:A:712:MET:HE3	1:A:755:MET:HA	1.80	0.64
1:A:512:ARG:HG2	1:A:524:GLU:HG2	1.82	0.61
1:A:622:LEU:HD13	1:A:716:MET:HE1	1.82	0.61
1:A:712:MET:HE1	1:A:758:CYS:SG	2.45	0.57
1:A:616:ASN:HD22	1:A:617:LEU:N	2.05	0.54
1:A:758:CYS:O	1:A:766:ARG:HD2	2.08	0.54
1:A:572:LYS:HE2	3:A:54:HOH:O	2.10	0.52
1:A:622:LEU:CB	1:A:716:MET:HE3	2.33	0.51
2:A:1:LUN:O17	2:A:1:LUN:H11	2.14	0.48
1:A:733:ASN:HA	1:A:736:ILE:HD11	1.96	0.47
1:A:692:GLU:OE2	1:A:766:ARG:NH2	2.45	0.46
1:A:643:HIS:O	1:A:644:ARG:HB2	2.17	0.45
1:A:732:TYR:O	1:A:736:ILE:HG13	2.17	0.44
1:A:501:VAL:HG22	1:A:563:LYS:HG2	2.00	0.43
1:A:651:CYS:HB3	1:A:659:VAL:CG1	2.48	0.43
1:A:508:PHE:HB3	1:A:527:LEU:HD23	2.03	0.41
1:A:542:LEU:HD22	1:A:589:PRO:HB2	2.02	0.41
1:A:574:VAL:HB	1:A:592:ILE:HG22	2.03	0.40

There are no symmetry-related clashes.

5.3 Torsion angles [i](#)

5.3.1 Protein backbone [i](#)

In the following table, the Percentiles column shows the percent Ramachandran outliers of the chain as a percentile score with respect to all X-ray entries followed by that with respect to entries of similar resolution.

The Analysed column shows the number of residues for which the backbone conformation was analysed, and the total number of residues.

Mol	Chain	Analysed	Favoured	Allowed	Outliers	Percentiles	
1	A	227/323 (70%)	222 (98%)	5 (2%)	0	100	100

There are no Ramachandran outliers to report.

5.3.2 Protein sidechains ⓘ

In the following table, the Percentiles column shows the percent sidechain outliers of the chain as a percentile score with respect to all X-ray entries followed by that with respect to entries of similar resolution.

The Analysed column shows the number of residues for which the sidechain conformation was analysed, and the total number of residues.

Mol	Chain	Analysed	Rotameric	Outliers	Percentiles	
1	A	209/280 (75%)	196 (94%)	13 (6%)	18	9

All (13) residues with a non-rotameric sidechain are listed below:

Mol	Chain	Res	Type
1	A	499	GLU
1	A	502	LEU
1	A	513	MET
1	A	518	GLU
1	A	527	LEU
1	A	556	LEU
1	A	580	SER
1	A	593	LEU
1	A	616	ASN
1	A	617	LEU
1	A	639	ARG
1	A	655	GLU
1	A	684	LEU

Some sidechains can be flipped to improve hydrogen bonding and reduce clashes. All (3) such sidechains are listed below:

Mol	Chain	Res	Type
1	A	567	HIS
1	A	616	ASN
1	A	765	GLN

5.3.3 RNA ⓘ

There are no RNA molecules in this entry.

5.4 Non-standard residues in protein, DNA, RNA chains ⓘ

There are no non-standard protein/DNA/RNA residues in this entry.

5.5 Carbohydrates ⓘ

There are no carbohydrates in this entry.

5.6 Ligand geometry ⓘ

1 ligand is modelled in this entry.

In the following table, the Counts columns list the number of bonds (or angles) for which Mogul statistics could be retrieved, the number of bonds (or angles) that are observed in the model and the number of bonds (or angles) that are defined in the Chemical Component Dictionary. The Link column lists molecule types, if any, to which the group is linked. The Z score for a bond length (or angle) is the number of standard deviations the observed value is removed from the expected value. A bond length (or angle) with $|Z| > 2$ is considered an outlier worth inspection. RMSZ is the root-mean-square of all Z scores of the bond lengths (or angles).

Mol	Type	Chain	Res	Link	Bond lengths			Bond angles		
					Counts	RMSZ	$\# Z > 2$	Counts	RMSZ	$\# Z > 2$
2	LUN	A	1	-	33,36,36	1.21	3 (9%)	39,54,54	1.57	6 (15%)

In the following table, the Chirals column lists the number of chiral outliers, the number of chiral centers analysed, the number of these observed in the model and the number defined in the Chemical Component Dictionary. Similar counts are reported in the Torsion and Rings columns. '-' means no outliers of that kind were identified.

Mol	Type	Chain	Res	Link	Chirals	Torsions	Rings
2	LUN	A	1	-	-	0/9/46/46	0/6/6/6

All (3) bond length outliers are listed below:

Mol	Chain	Res	Type	Atoms	Z	Observed(Å)	Ideal(Å)
2	A	1	LUN	C16-C13	-4.27	1.43	1.50
2	A	1	LUN	C13-N8	2.74	1.41	1.36
2	A	1	LUN	C28-C25	-2.02	1.38	1.41

All (6) bond angle outliers are listed below:

Mol	Chain	Res	Type	Atoms	Z	Observed(°)	Ideal(°)
2	A	1	LUN	C30-C28-C25	-4.42	115.27	120.84
2	A	1	LUN	C16-N21-C25	3.83	112.43	104.45
2	A	1	LUN	C19-C14-N9	-3.21	107.18	115.42
2	A	1	LUN	C18-C14-C19	-3.20	106.98	110.91
2	A	1	LUN	C28-C30-C29	2.81	121.96	118.74
2	A	1	LUN	C1-C4-N9	2.73	106.40	103.44

There are no chirality outliers.

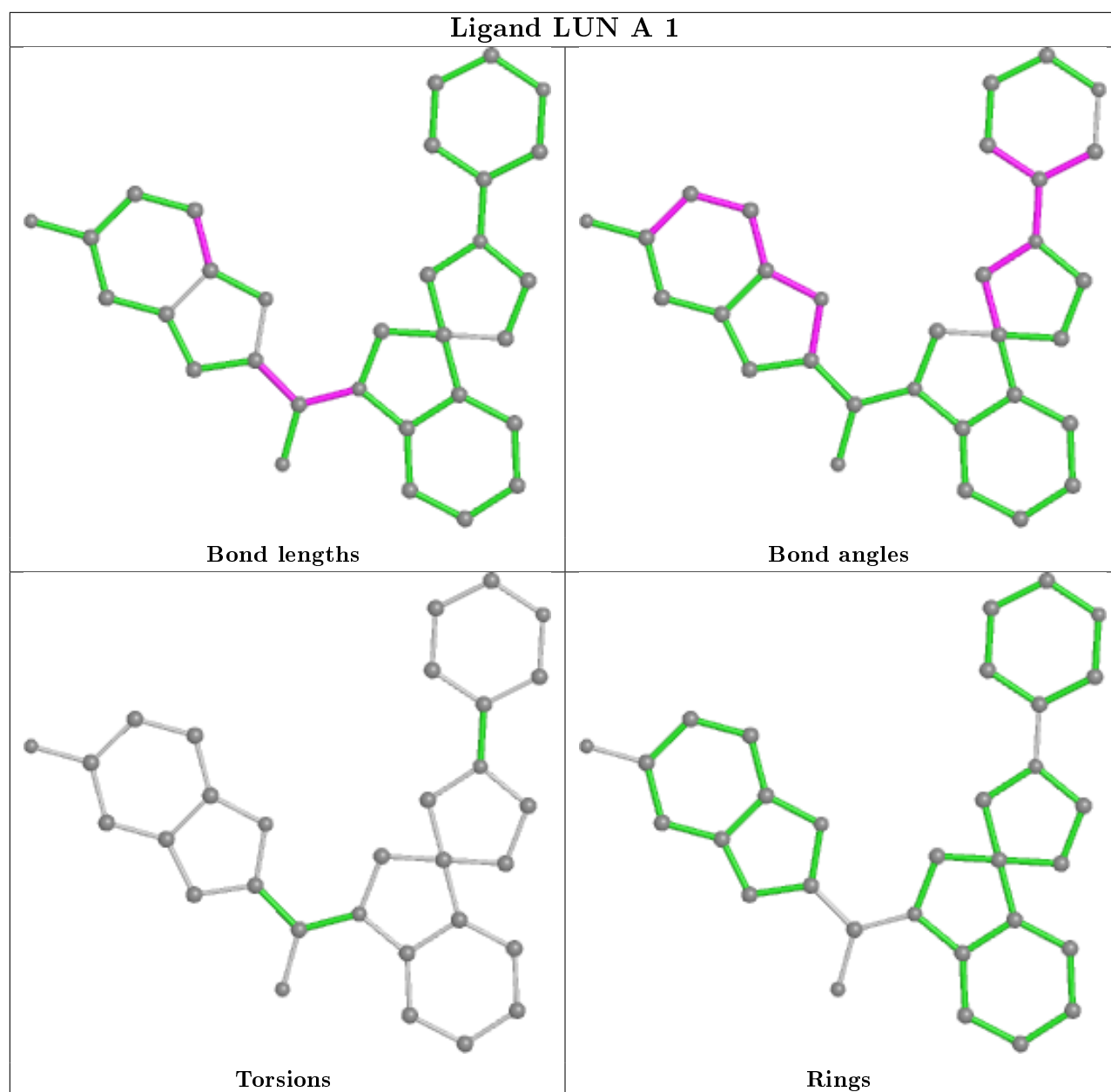
There are no torsion outliers.

There are no ring outliers.

1 monomer is involved in 1 short contact:

Mol	Chain	Res	Type	Clashes	Symm-Clashes
2	A	1	LUN	1	0

The following is a two-dimensional graphical depiction of Mogul quality analysis of bond lengths, bond angles, torsion angles, and ring geometry for all instances of the Ligand of Interest. In addition, ligands with molecular weight > 250 and outliers as shown on the validation Tables will also be included. For torsion angles, if less than 5% of the Mogul distribution of torsion angles is within 10 degrees of the torsion angle in question, then that torsion angle is considered an outlier. Any bond that is central to one or more torsion angles identified as an outlier by Mogul will be highlighted in the graph. For rings, the root-mean-square deviation (RMSD) between the ring in question and similar rings identified by Mogul is calculated over all ring torsion angles. If the average RMSD is greater than 60 degrees and the minimal RMSD between the ring in question and any Mogul-identified rings is also greater than 60 degrees, then that ring is considered an outlier. The outliers are highlighted in purple. The color gray indicates Mogul did not find sufficient equivalents in the CSD to analyse the geometry.



5.7 Other polymers [i](#)

There are no such residues in this entry.

5.8 Polymer linkage issues [i](#)

There are no chain breaks in this entry.

6 Fit of model and data

6.1 Protein, DNA and RNA chains

In the following table, the column labelled ‘#RSRZ> 2’ contains the number (and percentage) of RSRZ outliers, followed by percent RSRZ outliers for the chain as percentile scores relative to all X-ray entries and entries of similar resolution. The OWAB column contains the minimum, median, 95th percentile and maximum values of the occupancy-weighted average B-factor per residue. The column labelled ‘Q< 0.9’ lists the number of (and percentage) of residues with an average occupancy less than 0.9.

Mol	Chain	Analysed	<RSRZ>	#RSRZ>2	OWAB(Å ²)	Q<0.9
1	A	241/323 (74%)	0.90	37 (15%) 2 2	19, 39, 73, 81	0

All (37) RSRZ outliers are listed below:

Mol	Chain	Res	Type	RSRZ
1	A	588	ILE	8.5
1	A	578	LEU	6.3
1	A	513	MET	5.0
1	A	557	ARG	4.7
1	A	551	ASP	4.6
1	A	589	PRO	4.0
1	A	502	LEU	3.9
1	A	725	GLY	3.7
1	A	535	VAL	3.4
1	A	508	PHE	3.3
1	A	518	GLU	3.3
1	A	503	ILE	3.2
1	A	579	ARG	3.1
1	A	580	SER	3.1
1	A	749	GLU	3.1
1	A	509	THR	3.1
1	A	510	LEU	2.9
1	A	527	LEU	2.9
1	A	615	PHE	2.8
1	A	577	SER	2.7
1	A	563	LYS	2.5
1	A	608	SER	2.5
1	A	665	GLY	2.5
1	A	552	ILE	2.4
1	A	550	SER	2.4
1	A	561	CYS	2.4
1	A	523	ARG	2.4

Continued on next page...

Continued from previous page...

Mol	Chain	Res	Type	RSRZ
1	A	512	ARG	2.3
1	A	781	GLY	2.3
1	A	666	LEU	2.2
1	A	610	ILE	2.2
1	A	554	GLU	2.2
1	A	576	VAL	2.2
1	A	525	ALA	2.1
1	A	560	ALA	2.1
1	A	511	GLY	2.1
1	A	519	PHE	2.0

6.2 Non-standard residues in protein, DNA, RNA chains ⓘ

There are no non-standard protein/DNA/RNA residues in this entry.

6.3 Carbohydrates ⓘ

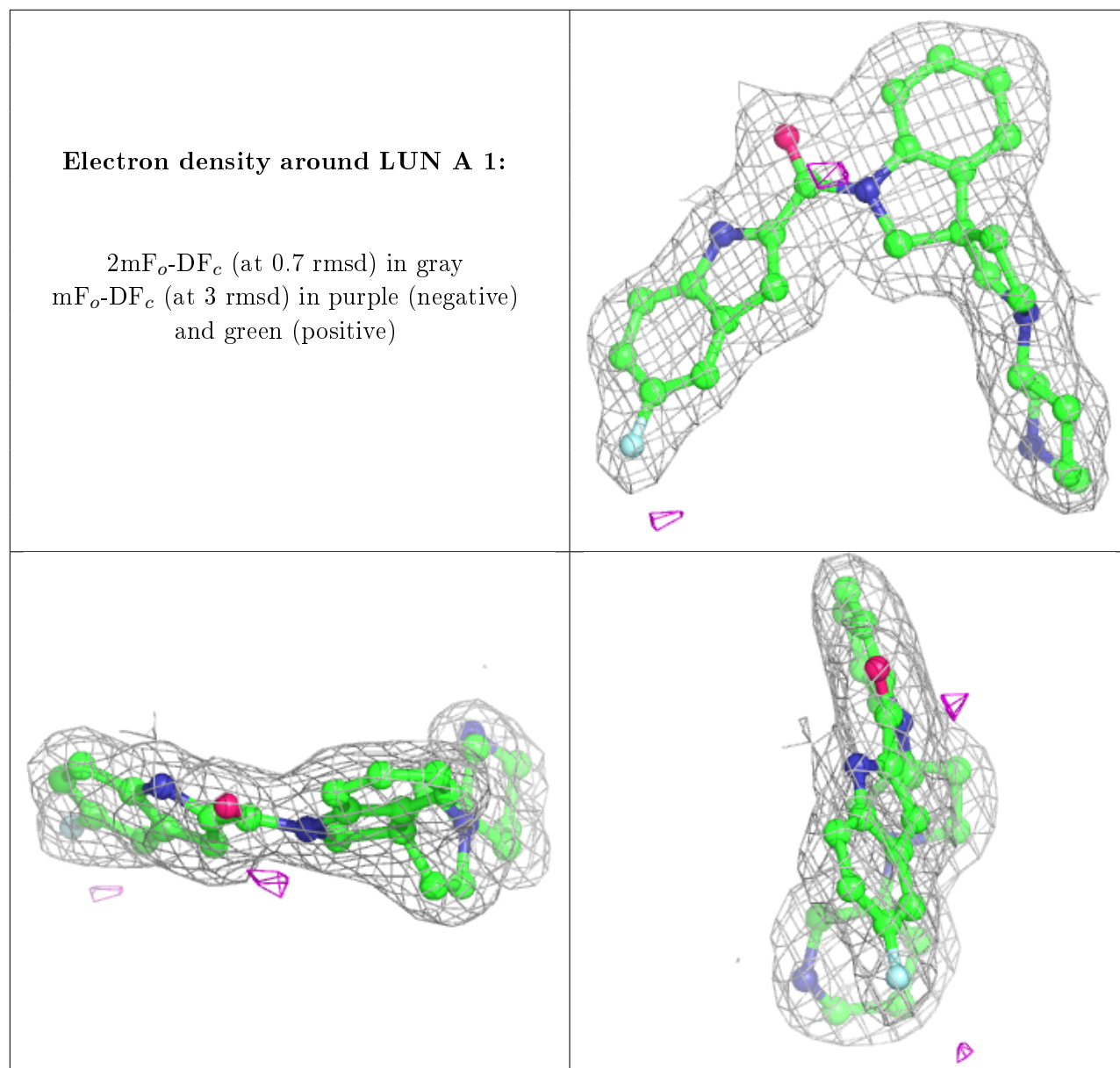
There are no carbohydrates in this entry.

6.4 Ligands ⓘ

In the following table, the Atoms column lists the number of modelled atoms in the group and the number defined in the chemical component dictionary. The B-factors column lists the minimum, median, 95th percentile and maximum values of B factors of atoms in the group. The column labelled 'Q< 0.9' lists the number of atoms with occupancy less than 0.9.

Mol	Type	Chain	Res	Atoms	RSCC	RSR	B-factors(Å ²)	Q<0.9
2	LUN	A	1	31/31	0.93	0.11	28,31,42,45	0

The following is a graphical depiction of the model fit to experimental electron density of all instances of the Ligand of Interest. In addition, ligands with molecular weight > 250 and outliers as shown on the geometry validation Tables will also be included. Each fit is shown from different orientation to approximate a three-dimensional view.



6.5 Other polymers ⓘ

There are no such residues in this entry.