



Full wwPDB X-ray Structure Validation Report ⓘ

Aug 9, 2020 – 02:40 AM BST

PDB ID : 6QU6
Title : Adenovirus Serotype 26 (Ad26) in complex with sialic acid, pH4.0
Authors : Baker, A.T.; Mundy, R.M.; Parker, A.L.; Rizkallah, P.J.
Deposited on : 2019-02-26
Resolution : 1.03 Å(reported)

This is a Full wwPDB X-ray Structure Validation Report for a publicly released PDB entry.

We welcome your comments at validation@mail.wwpdb.org

A user guide is available at

<https://www.wwpdb.org/validation/2017/XrayValidationReportHelp>

with specific help available everywhere you see the ⓘ symbol.

The following versions of software and data (see [references ⓘ](#)) were used in the production of this report:

MolProbity : 4.02b-467
Mogul : 1.8.5 (274361), CSD as541be (2020)
Xtriage (Phenix) : 1.13
EDS : 2.13.1
buster-report : 1.1.7 (2018)
Percentile statistics : 20191225.v01 (using entries in the PDB archive December 25th 2019)
Refmac : 5.8.0158
CCP4 : 7.0.044 (Gargrove)
Ideal geometry (proteins) : Engh & Huber (2001)
Ideal geometry (DNA, RNA) : Parkinson et al. (1996)
Validation Pipeline (wwPDB-VP) : 2.13.1

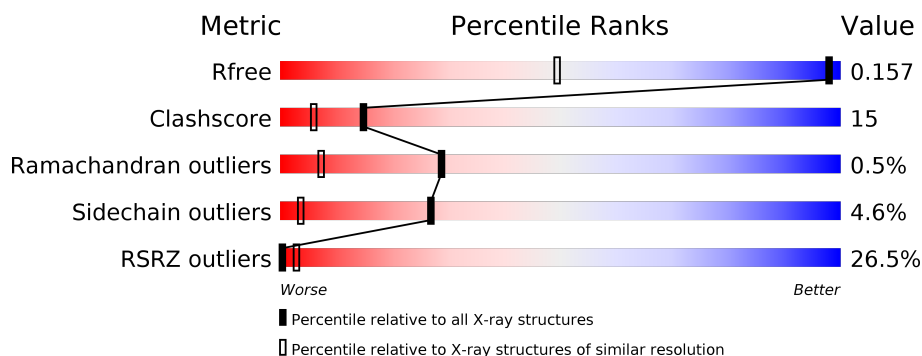
1 Overall quality at a glance

The following experimental techniques were used to determine the structure:

X-RAY DIFFRACTION

The reported resolution of this entry is 1.03 Å.

Percentile scores (ranging between 0-100) for global validation metrics of the entry are shown in the following graphic. The table shows the number of entries on which the scores are based.



Metric	Whole archive (#Entries)	Similar resolution (#Entries, resolution range(Å))
R_{free}	130704	1596 (1.10-0.98)
Clashscore	141614	1677 (1.10-0.98)
Ramachandran outliers	138981	1591 (1.10-0.98)
Sidechain outliers	138945	1589 (1.10-0.98)
RSRZ outliers	127900	1557 (1.10-0.98)

The table below summarises the geometric issues observed across the polymeric chains and their fit to the electron density. The red, orange, yellow and green segments on the lower bar indicate the fraction of residues that contain outliers for ≥ 3 , 2, 1 and 0 types of geometric quality criteria respectively. A grey segment represents the fraction of residues that are not modelled. The numeric value for each fraction is indicated below the corresponding segment, with a dot representing fractions $\leq 5\%$. The upper red bar (where present) indicates the fraction of residues that have poor fit to the electron density. The numeric value is given above the bar.

Mol	Chain	Length	Quality of chain
1	A	212	<div> <div>24%</div> <div>76%</div> <div>10%</div> <div>11%</div> </div>

The following table lists non-polymeric compounds, carbohydrate monomers and non-standard residues in protein, DNA, RNA chains that are outliers for geometric or electron-density-fit criteria:

Mol	Type	Chain	Res	Chirality	Geometry	Clashes	Electron density
5	EDO	A	405	-	-	X	X

2 Entry composition

There are 7 unique types of molecules in this entry. The entry contains 3658 atoms, of which 1722 are hydrogens and 0 are deuteriums.

In the tables below, the ZeroOcc column contains the number of atoms modelled with zero occupancy, the AltConf column contains the number of residues with at least one atom in alternate conformation and the Trace column contains the number of residues modelled with at most 2 atoms.

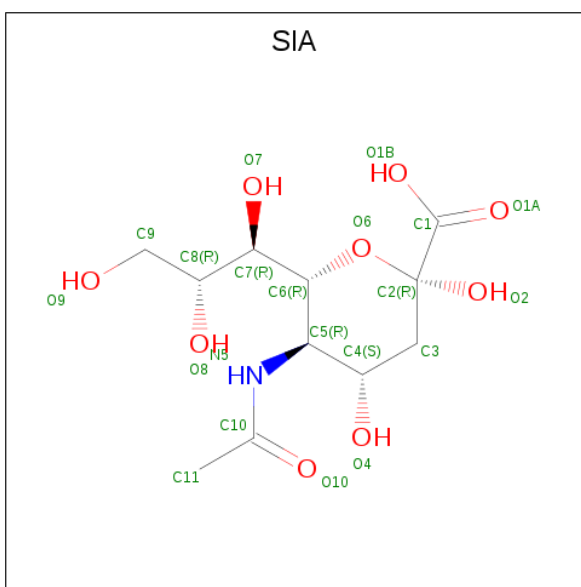
- Molecule 1 is a protein called Fiber.

Mol	Chain	Residues	Atoms						ZeroOcc	AltConf	Trace
1	A	189	Total	C	H	N	O	S	121	26	0
			3364	1066	1664	277	349	8			

There are 12 discrepancies between the modelled and reference sequences:

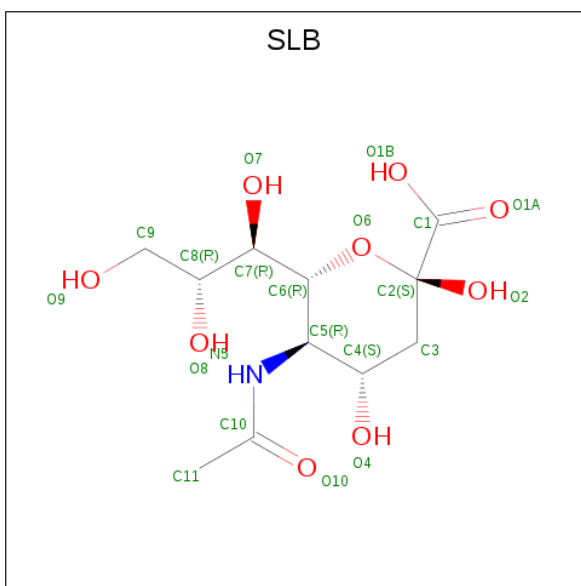
Chain	Residue	Modelled	Actual	Comment	Reference
A	163	MET	-	initiating methionine	UNP A4ZKM1
A	164	ARG	-	expression tag	UNP A4ZKM1
A	165	GLY	-	expression tag	UNP A4ZKM1
A	166	SER	-	expression tag	UNP A4ZKM1
A	167	HIS	-	expression tag	UNP A4ZKM1
A	168	HIS	-	expression tag	UNP A4ZKM1
A	169	HIS	-	expression tag	UNP A4ZKM1
A	170	HIS	-	expression tag	UNP A4ZKM1
A	171	HIS	-	expression tag	UNP A4ZKM1
A	172	HIS	-	expression tag	UNP A4ZKM1
A	173	GLY	-	expression tag	UNP A4ZKM1
A	174	SER	-	expression tag	UNP A4ZKM1

- Molecule 2 is N-acetyl-alpha-neuraminic acid (three-letter code: SIA) (formula: C₁₁H₁₉NO₉).



Mol	Chain	Residues	Atoms					ZeroOcc	AltConf
2	A	1	Total	C	H	N	O	5	1
			39	11	18	1	9		

- Molecule 3 is N-acetyl-beta-neuraminic acid (three-letter code: SLB) (formula: $C_{11}H_{19}NO_9$).



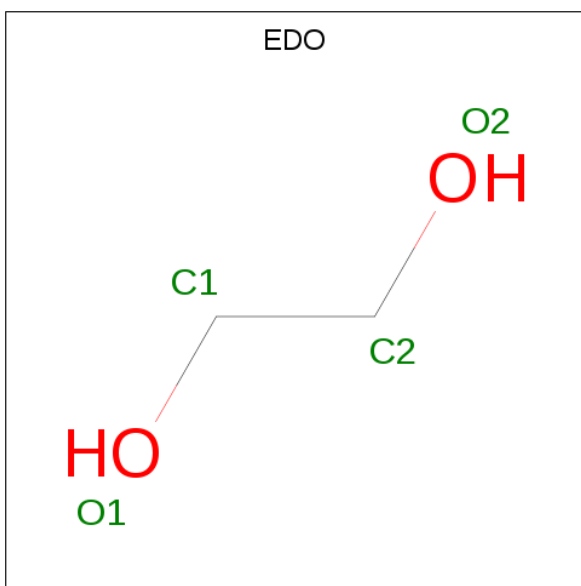
Mol	Chain	Residues	Atoms					ZeroOcc	AltConf
3	A	1	Total	C	H	N	O	5	1
			39	11	18	1	9		

- Molecule 4 is SULFATE ION (three-letter code: SO4) (formula: O_4S).



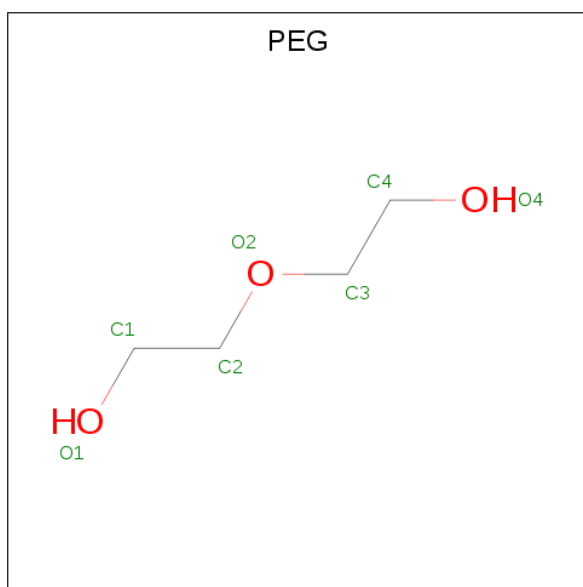
Mol	Chain	Residues	Atoms			ZeroOcc	AltConf
4	A	1	Total	O	S	0	0
			5	4	1		

- Molecule 5 is 1,2-ETHANEDIOL (three-letter code: EDO) (formula: C₂H₆O₂).



Mol	Chain	Residues	Atoms				ZeroOcc	AltConf
5	A	1	Total	C	H	O	1	0
			10	2	6	2		
5	A	1	Total	C	H	O	1	0
			10	2	6	2		

- Molecule 6 is DI(HYDROXYETHYL)ETHER (three-letter code: PEG) (formula: C₄H₁₀O₃).



Mol	Chain	Residues	Atoms				ZeroOcc	AltConf
6	A	1	Total	C	H	O	1	0
			17	4	10	3		

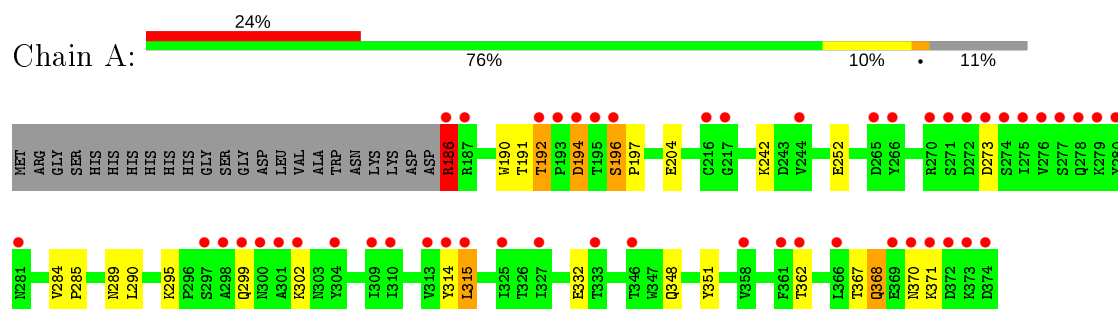
- Molecule 7 is water.

Mol	Chain	Residues	Atoms		ZeroOcc	AltConf
7	A	174	Total	O	0	0
			174	174		

3 Residue-property plots [i](#)

These plots are drawn for all protein, RNA, DNA and oligosaccharide chains in the entry. The first graphic for a chain summarises the proportions of the various outlier classes displayed in the second graphic. The second graphic shows the sequence view annotated by issues in geometry and electron density. Residues are color-coded according to the number of geometric quality criteria for which they contain at least one outlier: green = 0, yellow = 1, orange = 2 and red = 3 or more. A red dot above a residue indicates a poor fit to the electron density ($RSRZ > 2$). Stretches of 2 or more consecutive residues without any outlier are shown as a green connector. Residues present in the sample, but not in the model, are shown in grey.

- Molecule 1: Fiber



4 Data and refinement statistics

Property	Value	Source
Space group	P 21 3	Depositor
Cell constants a, b, c, α , β , γ	85.73Å 85.73Å 85.73Å 90.00° 90.00° 90.00°	Depositor
Resolution (Å)	49.50 – 1.03 49.50 – 1.03	Depositor EDS
% Data completeness (in resolution range)	97.7 (49.50-1.03) 97.7 (49.50-1.03)	Depositor EDS
R_{merge}	0.05	Depositor
R_{sym}	(Not available)	Depositor
$\langle I/\sigma(I) \rangle$ ¹	1.14 (at 1.03Å)	Xtriage
Refinement program	REFMAC 5.8.0238	Depositor
R, R_{free}	0.136 , 0.148 0.141 , 0.157	Depositor DCC
R_{free} test set	4907 reflections (4.86%)	wwPDB-VP
Wilson B-factor (Å ²)	9.8	Xtriage
Anisotropy	0.000	Xtriage
Bulk solvent k_{sol} (e/Å ³), B_{sol} (Å ²)	0.43 , 49.2	EDS
L-test for twinning ²	$\langle L \rangle = 0.50$, $\langle L^2 \rangle = 0.33$	Xtriage
Estimated twinning fraction	0.030 for l,-k,h	Xtriage
F_o, F_c correlation	0.98	EDS
Total number of atoms	3658	wwPDB-VP
Average B, all atoms (Å ²)	19.0	wwPDB-VP

Xtriage's analysis on translational NCS is as follows: *The largest off-origin peak in the Patterson function is 4.39% of the height of the origin peak. No significant pseudotranslation is detected.*

¹Intensities estimated from amplitudes.

²Theoretical values of $\langle |L| \rangle$, $\langle L^2 \rangle$ for acentric reflections are 0.5, 0.333 respectively for untwinned datasets, and 0.375, 0.2 for perfectly twinned datasets.

5 Model quality [i](#)

5.1 Standard geometry [i](#)

Bond lengths and bond angles in the following residue types are not validated in this section: SIA, PEG, EDO, SLB, SO4

The Z score for a bond length (or angle) is the number of standard deviations the observed value is removed from the expected value. A bond length (or angle) with $|Z| > 5$ is considered an outlier worth inspection. RMSZ is the root-mean-square of all Z scores of the bond lengths (or angles).

Mol	Chain	Bond lengths		Bond angles	
		RMSZ	$\# Z > 5$	RMSZ	$\# Z > 5$
1	A	0.62	2/1734 (0.1%)	0.84	1/2357 (0.0%)

Chiral center outliers are detected by calculating the chiral volume of a chiral center and verifying if the center is modelled as a planar moiety or with the opposite hand. A planarity outlier is detected by checking planarity of atoms in a peptide group, atoms in a mainchain group or atoms of a sidechain that are expected to be planar.

Mol	Chain	#Chirality outliers	#Planarity outliers
1	A	0	1

All (2) bond length outliers are listed below:

Mol	Chain	Res	Type	Atoms	Z	Observed(Å)	Ideal(Å)
1	A	252[A]	GLU	CD-OE1	6.22	1.32	1.25
1	A	252[B]	GLU	CD-OE1	6.22	1.32	1.25

All (1) bond angle outliers are listed below:

Mol	Chain	Res	Type	Atoms	Z	Observed(°)	Ideal(°)
1	A	186	ARG	NE-CZ-NH2	5.26	122.93	120.30

There are no chirality outliers.

All (1) planarity outliers are listed below:

Mol	Chain	Res	Type	Group
1	A	314	TYR	Sidechain

5.2 Too-close contacts ⓘ

In the following table, the Non-H and H(model) columns list the number of non-hydrogen atoms and hydrogen atoms in the chain respectively. The H(added) column lists the number of hydrogen atoms added and optimized by MolProbity. The Clashes column lists the number of clashes within the asymmetric unit, whereas Symm-Clashes lists symmetry related clashes.

Mol	Chain	Non-H	H(model)	H(added)	Clashes	Symm-Clashes
1	A	1700	1664	1645	47	0
2	A	21	18	18	2	0
3	A	21	18	18	2	0
4	A	5	0	0	0	0
5	A	8	12	12	14	0
6	A	7	10	10	1	0
7	A	174	0	0	11	0
All	All	1936	1722	1703	53	0

The all-atom clashscore is defined as the number of clashes found per 1000 atoms (including hydrogen atoms). The all-atom clashscore for this structure is 15.

All (53) close contacts within the same asymmetric unit are listed below, sorted by their clash magnitude.

Atom-1	Atom-2	Interatomic distance (Å)	Clash overlap (Å)
1:A:285:PRO:O	1:A:367[A]:THR:HG21	1.59	1.03
1:A:348[B]:GLN:OE1	3:A:402[B]:SLB:O9	1.77	1.01
1:A:204[B]:GLU:OE2	7:A:501:HOH:O	1.79	1.00
1:A:192[A]:THR:OG1	1:A:194[A]:ASP:OD1	1.86	0.93
1:A:242[B]:LYS:HE3	7:A:508:HOH:O	1.70	0.91
1:A:191:THR:O	1:A:192[B]:THR:HG22	1.69	0.91
5:A:405:EDO:C2	7:A:652:HOH:O	2.26	0.83
1:A:192[A]:THR:CB	1:A:194[A]:ASP:OD1	2.28	0.81
5:A:405:EDO:H21	7:A:652:HOH:O	1.84	0.76
1:A:362[A]:THR:HB	5:A:405:EDO:H12	1.68	0.75
1:A:348[B]:GLN:CD	3:A:402[B]:SLB:O9	2.23	0.75
1:A:284:VAL:HG11	1:A:370:ASN:HB2	1.67	0.74
1:A:191:THR:O	1:A:192[B]:THR:CG2	2.38	0.72
1:A:285:PRO:O	1:A:367[A]:THR:CG2	2.37	0.70
6:A:406:PEG:H42	7:A:629:HOH:O	1.93	0.67
1:A:285:PRO:HG3	1:A:371:LYS:HA	1.75	0.67
1:A:242[B]:LYS:CE	7:A:508:HOH:O	2.34	0.67
1:A:367[A]:THR:HG22	1:A:368:GLN:O	1.96	0.66
1:A:362[B]:THR:HG22	7:A:596:HOH:O	1.95	0.66
1:A:192[A]:THR:HB	1:A:194[A]:ASP:OD1	1.94	0.65

Continued on next page...

Continued from previous page...

Atom-1	Atom-2	Interatomic distance (Å)	Clash overlap (Å)
1:A:194[A]:ASP:N	1:A:194[A]:ASP:OD1	2.29	0.65
5:A:405:EDO:H22	7:A:652:HOH:O	1.89	0.64
1:A:191:THR:O	1:A:192[B]:THR:CB	2.47	0.63
1:A:362[A]:THR:H	5:A:405:EDO:C1	2.12	0.63
1:A:362[B]:THR:HG23	5:A:405:EDO:H12	1.82	0.61
1:A:186:ARG:NH1	7:A:503:HOH:O	2.32	0.61
1:A:302:LYS:HE3	7:A:537:HOH:O	2.01	0.60
1:A:362[B]:THR:O	5:A:405:EDO:C1	2.50	0.59
1:A:362[B]:THR:H	5:A:405:EDO:C1	2.15	0.59
1:A:284:VAL:HG11	1:A:370:ASN:CB	2.34	0.58
1:A:186:ARG:HG2	1:A:186:ARG:HH21	1.70	0.57
1:A:284:VAL:CG1	1:A:370:ASN:HB2	2.33	0.57
1:A:290:LEU:H	1:A:368:GLN:HE22	1.53	0.55
1:A:186:ARG:CG	1:A:186:ARG:HH21	2.21	0.53
1:A:362[A]:THR:O	5:A:405:EDO:H11	2.09	0.53
2:A:401[A]:SIA:O9	2:A:401[A]:SIA:H6	2.09	0.52
1:A:362[B]:THR:O	5:A:405:EDO:H11	2.10	0.52
1:A:315[B]:LEU:HD12	1:A:351:TYR:CG	2.45	0.52
1:A:196[A]:SER:HB3	1:A:197:PRO:HD2	1.92	0.51
1:A:196[A]:SER:CB	1:A:197:PRO:HD2	2.41	0.51
1:A:362[A]:THR:H	5:A:405:EDO:H11	1.76	0.49
1:A:368:GLN:HA	1:A:368:GLN:HE21	1.78	0.48
1:A:191:THR:O	1:A:192[B]:THR:HB	2.15	0.47
1:A:362[A]:THR:O	5:A:405:EDO:C1	2.62	0.47
1:A:290:LEU:H	1:A:368:GLN:NE2	2.11	0.47
1:A:367[A]:THR:HG22	1:A:368:GLN:N	2.31	0.45
1:A:362[B]:THR:H	5:A:405:EDO:H11	1.81	0.44
1:A:367[A]:THR:CG2	1:A:368:GLN:N	2.81	0.43
1:A:348[B]:GLN:NE2	7:A:510:HOH:O	2.52	0.42
1:A:362[A]:THR:N	5:A:405:EDO:H11	2.35	0.42
1:A:289:ASN:HA	1:A:368:GLN:HE21	1.84	0.42
2:A:401[A]:SIA:O9	2:A:401[A]:SIA:C6	2.67	0.41
1:A:295:LYS:NZ	1:A:332:GLU:O	2.52	0.41

There are no symmetry-related clashes.

5.3 Torsion angles [i](#)

5.3.1 Protein backbone [i](#)

In the following table, the Percentiles column shows the percent Ramachandran outliers of the chain as a percentile score with respect to all X-ray entries followed by that with respect to entries of similar resolution.

The Analysed column shows the number of residues for which the backbone conformation was analysed, and the total number of residues.

Mol	Chain	Analysed	Favoured	Allowed	Outliers	Percentiles
1	A	213/212 (100%)	193 (91%)	18 (8%)	2 (1%)	17 2

All (2) Ramachandran outliers are listed below:

Mol	Chain	Res	Type
1	A	192[A]	THR
1	A	192[B]	THR

5.3.2 Protein sidechains [i](#)

In the following table, the Percentiles column shows the percent sidechain outliers of the chain as a percentile score with respect to all X-ray entries followed by that with respect to entries of similar resolution.

The Analysed column shows the number of residues for which the sidechain conformation was analysed, and the total number of residues.

Mol	Chain	Analysed	Rotameric	Outliers	Percentiles
1	A	199/192 (104%)	188 (94%)	11 (6%)	21 2

All (11) residues with a non-rotameric sidechain are listed below:

Mol	Chain	Res	Type
1	A	186	ARG
1	A	190	TRP
1	A	194[A]	ASP
1	A	194[B]	ASP
1	A	196[A]	SER
1	A	196[B]	SER
1	A	273	ASP
1	A	299	GLN
1	A	315[A]	LEU

Continued on next page...

Continued from previous page...

Mol	Chain	Res	Type
1	A	315[B]	LEU
1	A	368	GLN

Some sidechains can be flipped to improve hydrogen bonding and reduce clashes. All (3) such sidechains are listed below:

Mol	Chain	Res	Type
1	A	299	GLN
1	A	335	ASN
1	A	368	GLN

5.3.3 RNA ⓘ

There are no RNA molecules in this entry.

5.4 Non-standard residues in protein, DNA, RNA chains ⓘ

There are no non-standard protein/DNA/RNA residues in this entry.

5.5 Carbohydrates ⓘ

There are no monosaccharides in this entry.

5.6 Ligand geometry ⓘ

6 ligands are modelled in this entry.

In the following table, the Counts columns list the number of bonds (or angles) for which Mogul statistics could be retrieved, the number of bonds (or angles) that are observed in the model and the number of bonds (or angles) that are defined in the Chemical Component Dictionary. The Link column lists molecule types, if any, to which the group is linked. The Z score for a bond length (or angle) is the number of standard deviations the observed value is removed from the expected value. A bond length (or angle) with $|Z| > 2$ is considered an outlier worth inspection. RMSZ is the root-mean-square of all Z scores of the bond lengths (or angles).

Mol	Type	Chain	Res	Link	Bond lengths			Bond angles		
					Counts	RMSZ	$\# Z > 2$	Counts	RMSZ	$\# Z > 2$
5	EDO	A	404	-	3,3,3	0.05	0	2,2,2	0.19	0
4	SO4	A	403	-	4,4,4	0.49	0	6,6,6	0.22	0
2	SIA	A	401[A]	-	18,21,21	0.55	0	21,31,31	1.68	3 (14%)

Mol	Type	Chain	Res	Link	Bond lengths			Bond angles		
					Counts	RMSZ	# Z > 2	Counts	RMSZ	# Z > 2
3	SLB	A	402[B]	-	18,21,21	0.98	1 (5%)	21,31,31	0.97	2 (9%)
5	EDO	A	405	-	3,3,3	0.59	0	2,2,2	0.26	0
6	PEG	A	406	-	6,6,6	0.27	0	5,5,5	0.29	0

In the following table, the Chirals column lists the number of chiral outliers, the number of chiral centers analysed, the number of these observed in the model and the number defined in the Chemical Component Dictionary. Similar counts are reported in the Torsion and Rings columns. '-' means no outliers of that kind were identified.

Mol	Type	Chain	Res	Link	Chirals	Torsions	Rings
5	EDO	A	405	-	-	1/1/1/1	-
6	PEG	A	406	-	-	3/4/4/4	-
2	SIA	A	401[A]	-	-	5/14/38/38	0/1/1/1
5	EDO	A	404	-	-	0/1/1/1	-
3	SLB	A	402[B]	-	-	0/14/38/38	0/1/1/1

All (1) bond length outliers are listed below:

Mol	Chain	Res	Type	Atoms	Z	Observed(Å)	Ideal(Å)
3	A	402[B]	SLB	O2-C2	3.80	1.45	1.39

All (5) bond angle outliers are listed below:

Mol	Chain	Res	Type	Atoms	Z	Observed(°)	Ideal(°)
2	A	401[A]	SIA	C8-C7-C6	5.44	123.34	113.03
2	A	401[A]	SIA	O8-C8-C7	3.38	117.32	109.10
2	A	401[A]	SIA	O2-C2-C3	2.56	112.94	109.35
3	A	402[B]	SLB	O2-C2-C3	2.50	112.84	109.35
3	A	402[B]	SLB	O6-C6-C5	-2.23	107.60	109.78

There are no chirality outliers.

All (9) torsion outliers are listed below:

Mol	Chain	Res	Type	Atoms
2	A	401[A]	SIA	C6-C7-C8-C9
2	A	401[A]	SIA	O7-C7-C8-C9
2	A	401[A]	SIA	O7-C7-C8-O8
2	A	401[A]	SIA	C6-C7-C8-O8
6	A	406	PEG	O2-C3-C4-O4
2	A	401[A]	SIA	C7-C8-C9-O9

Continued on next page...

Continued from previous page...

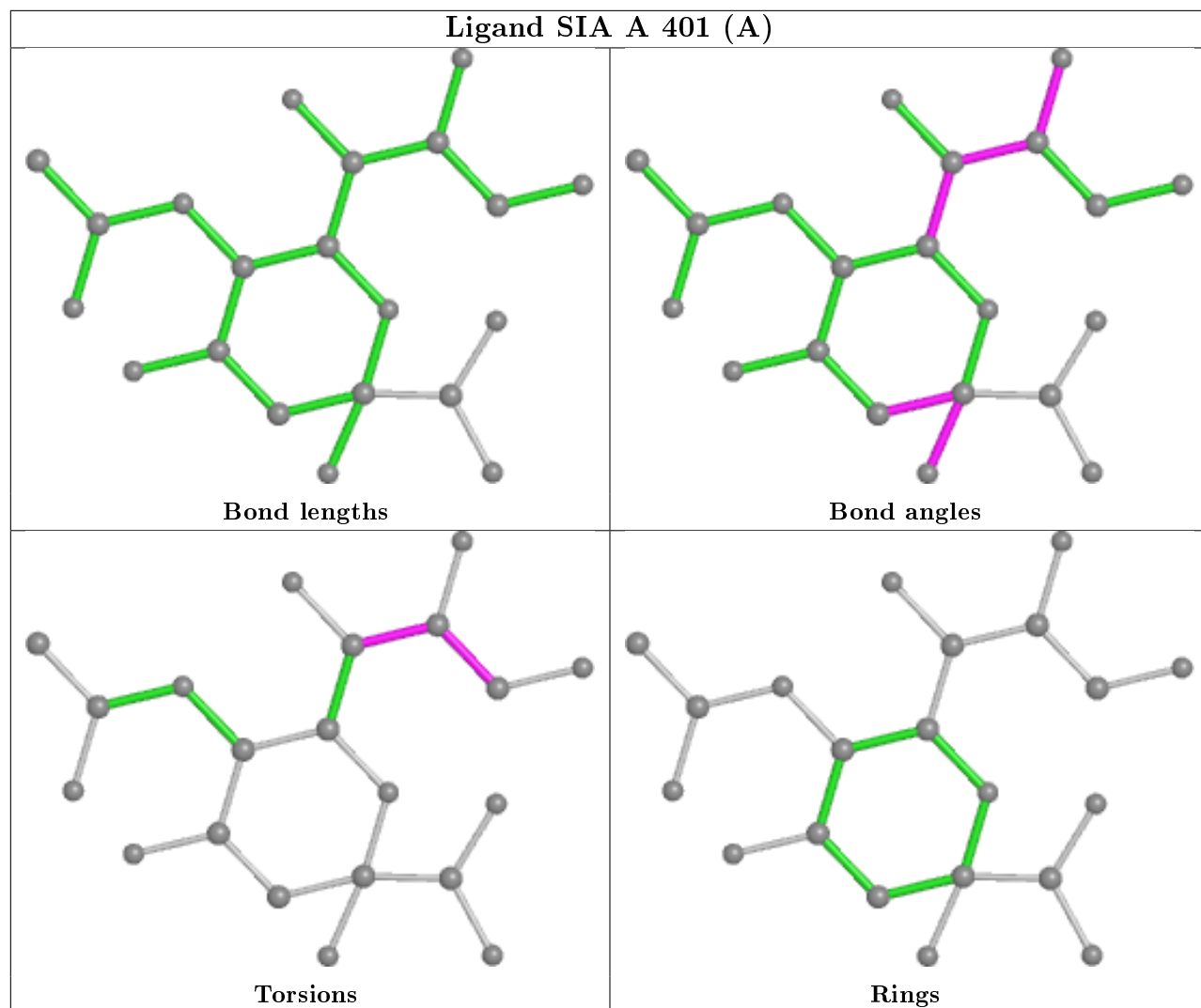
Mol	Chain	Res	Type	Atoms
5	A	405	EDO	O1-C1-C2-O2
6	A	406	PEG	C4-C3-O2-C2
6	A	406	PEG	C1-C2-O2-C3

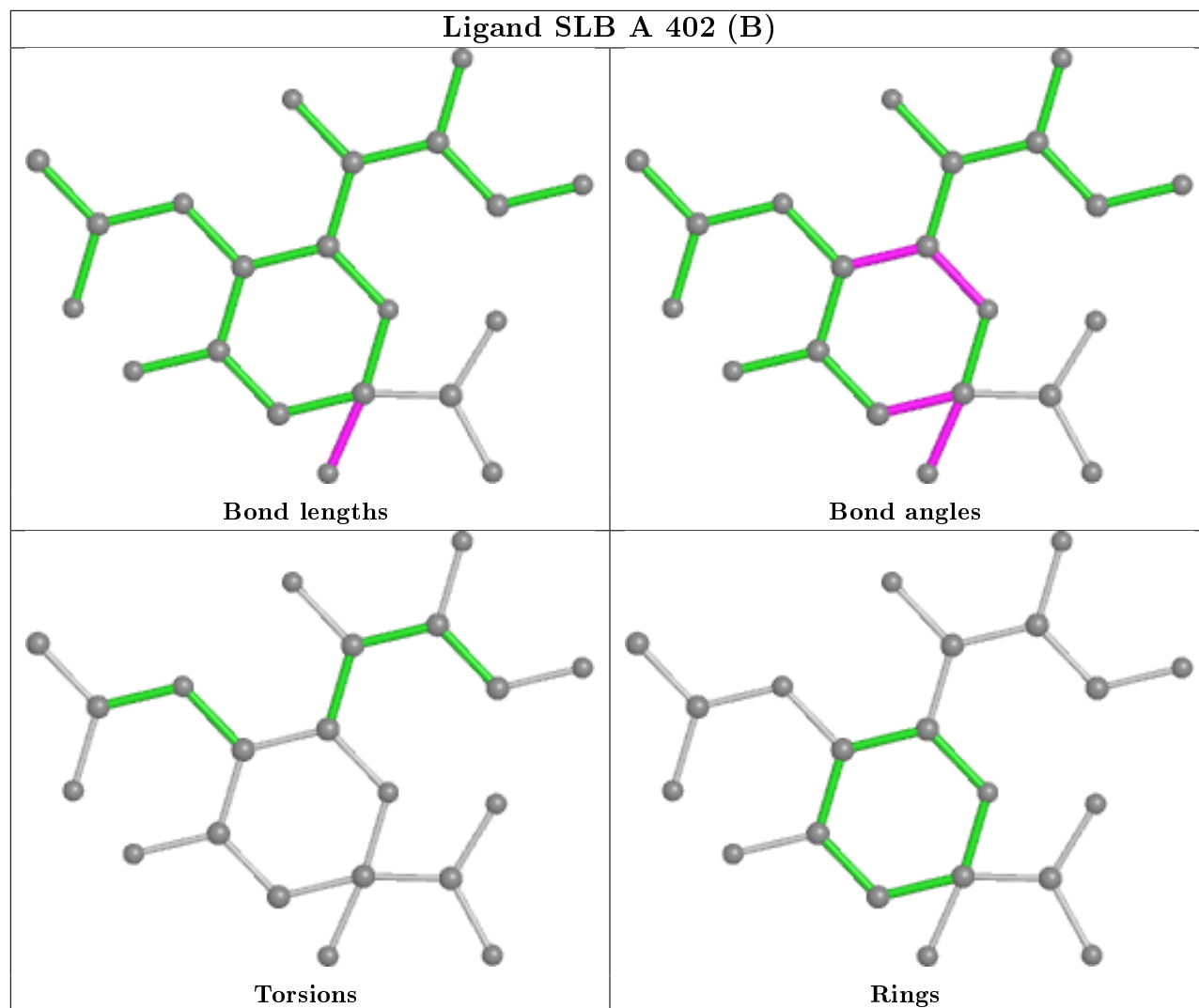
There are no ring outliers.

4 monomers are involved in 19 short contacts:

Mol	Chain	Res	Type	Clashes	Symm-Clashes
2	A	401[A]	SIA	2	0
3	A	402[B]	SLB	2	0
5	A	405	EDO	14	0
6	A	406	PEG	1	0

The following is a two-dimensional graphical depiction of Mogul quality analysis of bond lengths, bond angles, torsion angles, and ring geometry for all instances of the Ligand of Interest. In addition, ligands with molecular weight > 250 and outliers as shown on the validation Tables will also be included. For torsion angles, if less than 5% of the Mogul distribution of torsion angles is within 10 degrees of the torsion angle in question, then that torsion angle is considered an outlier. Any bond that is central to one or more torsion angles identified as an outlier by Mogul will be highlighted in the graph. For rings, the root-mean-square deviation (RMSD) between the ring in question and similar rings identified by Mogul is calculated over all ring torsion angles. If the average RMSD is greater than 60 degrees and the minimal RMSD between the ring in question and any Mogul-identified rings is also greater than 60 degrees, then that ring is considered an outlier. The outliers are highlighted in purple. The color gray indicates Mogul did not find sufficient equivalents in the CSD to analyse the geometry.





5.7 Other polymers [i](#)

There are no such residues in this entry.

5.8 Polymer linkage issues [i](#)

There are no chain breaks in this entry.

6 Fit of model and data ⓘ

6.1 Protein, DNA and RNA chains ⓘ

In the following table, the column labelled ‘#RSRZ> 2’ contains the number (and percentage) of RSRZ outliers, followed by percent RSRZ outliers for the chain as percentile scores relative to all X-ray entries and entries of similar resolution. The OWAB column contains the minimum, median, 95th percentile and maximum values of the occupancy-weighted average B-factor per residue. The column labelled ‘Q< 0.9’ lists the number of (and percentage) of residues with an average occupancy less than 0.9.

Mol	Chain	Analysed	<RSRZ>	#RSRZ>2	OWAB(Å ²)	Q<0.9
1	A	189/212 (89%)	2.24	50 (26%) 0 3	7, 12, 62, 100	0

All (50) RSRZ outliers are listed below:

Mol	Chain	Res	Type	RSRZ
1	A	372	ASP	21.6
1	A	300	ASN	16.3
1	A	371	LYS	13.3
1	A	298	ALA	12.1
1	A	299	GLN	11.9
1	A	369	GLU	10.8
1	A	301	ALA	10.6
1	A	272	ASP	10.4
1	A	370	ASN	10.3
1	A	374	ASP	9.6
1	A	373	LYS	9.4
1	A	278	GLN	8.5
1	A	193[A]	PRO	8.0
1	A	275	ILE	7.4
1	A	276	VAL	7.0
1	A	277	SER	6.1
1	A	194[A]	ASP	5.7
1	A	195[A]	THR	5.3
1	A	192[A]	THR	5.0
1	A	187	ARG	4.6
1	A	281	ASN	4.4
1	A	186	ARG	4.2
1	A	273	ASP	4.2
1	A	279	LYS	4.1
1	A	297	SER	3.9
1	A	271	SER	3.8
1	A	266	TYR	3.6

Continued on next page...

Continued from previous page...

Mol	Chain	Res	Type	RSRZ
1	A	280	TYR	3.6
1	A	274	SER	3.6
1	A	265	ASP	3.1
1	A	302	LYS	3.1
1	A	196[A]	SER	2.8
1	A	327	ILE	2.8
1	A	304	TYR	2.7
1	A	361	PHE	2.6
1	A	244[A]	VAL	2.5
1	A	366[A]	LEU	2.5
1	A	313	VAL	2.4
1	A	310	ILE	2.4
1	A	217	GLY	2.4
1	A	315[A]	LEU	2.4
1	A	333	THR	2.3
1	A	216[A]	CYS	2.3
1	A	270	ARG	2.2
1	A	314	TYR	2.2
1	A	309	ILE	2.2
1	A	358	VAL	2.2
1	A	325	ILE	2.1
1	A	346[A]	THR	2.0
1	A	362[A]	THR	2.0

6.2 Non-standard residues in protein, DNA, RNA chains [i](#)

There are no non-standard protein/DNA/RNA residues in this entry.

6.3 Carbohydrates [i](#)

There are no monosaccharides in this entry.

6.4 Ligands [i](#)

In the following table, the Atoms column lists the number of modelled atoms in the group and the number defined in the chemical component dictionary. The B-factors column lists the minimum, median, 95th percentile and maximum values of B factors of atoms in the group. The column labelled 'Q< 0.9' lists the number of atoms with occupancy less than 0.9.

Continued on next page...

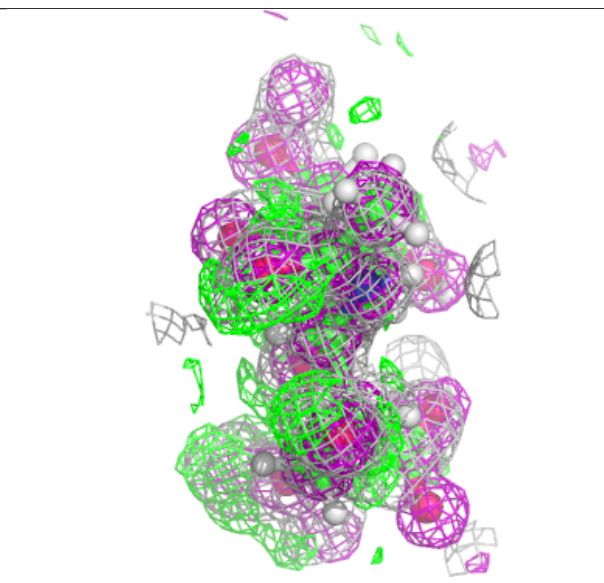
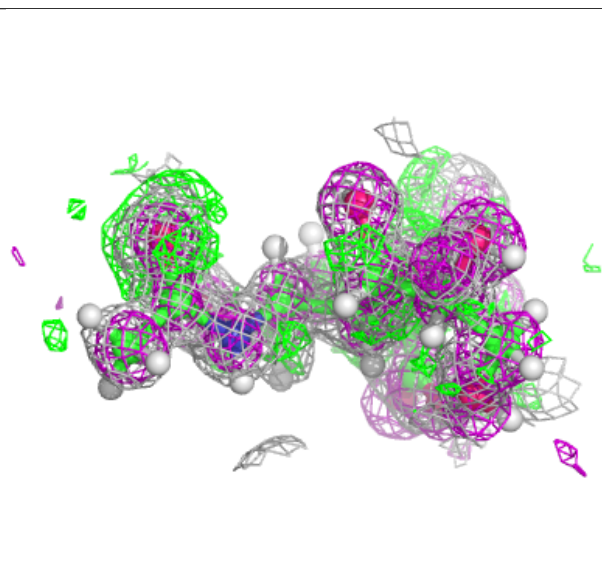
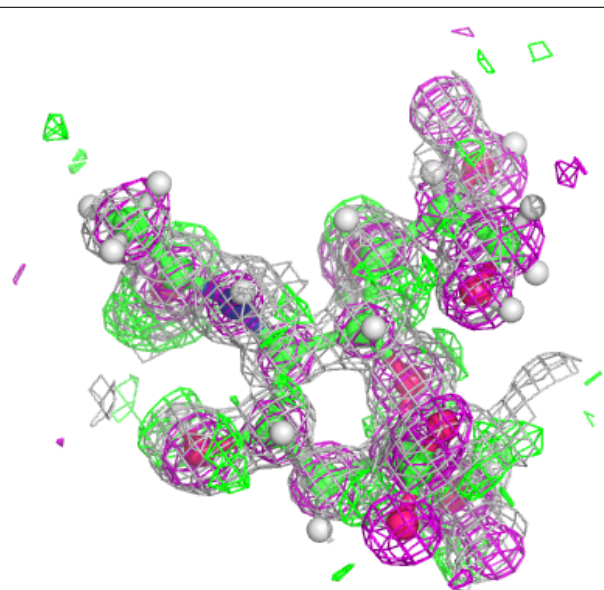
Continued from previous page...

Mol	Type	Chain	Res	Atoms	RSCC	RSR	B-factors(Å ²)	Q<0.9
5	EDO	A	404	4/4	0.62	0.31	38,41,44,44	1
5	EDO	A	405	4/4	0.73	0.79	12,14,16,16	10
6	PEG	A	406	7/7	0.82	0.56	6,9,12,12	17
2	SIA	A	401[A]	21/21	0.90	0.27	5,6,8,9	39
3	SLB	A	402[B]	21/21	0.91	0.24	2,3,4,4	39
4	SO4	A	403	5/5	0.98	0.09	11,15,17,18	5

The following is a graphical depiction of the model fit to experimental electron density of all instances of the Ligand of Interest. In addition, ligands with molecular weight > 250 and outliers as shown on the geometry validation Tables will also be included. Each fit is shown from different orientation to approximate a three-dimensional view.

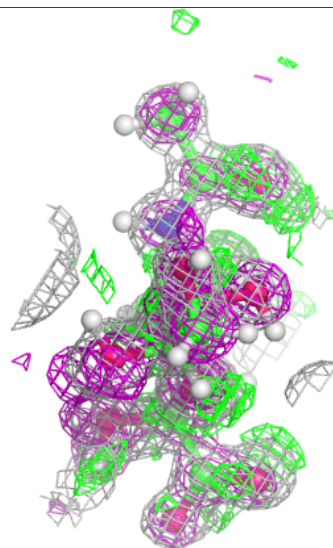
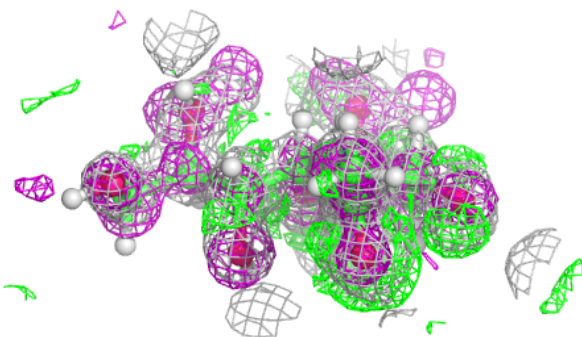
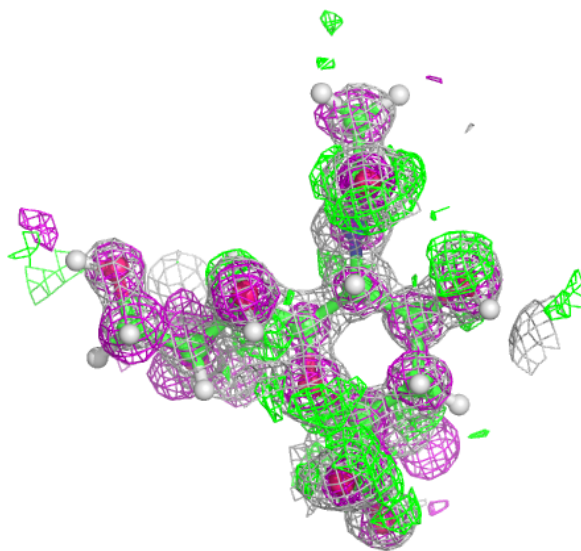
Electron density around SIA A 401 (A):

2mF_o-DF_c (at 0.7 rmsd) in gray
mF_o-DF_c (at 3 rmsd) in purple (negative)
and green (positive)



Electron density around SLB A 402 (B):

$2mF_o-DF_c$ (at 0.7 rmsd) in gray
 mF_o-DF_c (at 3 rmsd) in purple (negative)
and green (positive)



6.5 Other polymers ⓘ

There are no such residues in this entry.