



# Full wwPDB X-ray Structure Validation Report ⓘ

Jan 24, 2021 – 12:38 PM EST

PDB ID : 2QVH  
Title : Crystal structure of O-succinylbenzoate synthase complexed with O-succinyl benzoate (OSB)  
Authors : Sugadev, R.; Burley, S.K.; Swaminathan, S.; New York SGX Research Center for Structural Genomics (NYSGXRC)  
Deposited on : 2007-08-08  
Resolution : 1.76 Å(reported)

This is a Full wwPDB X-ray Structure Validation Report for a publicly released PDB entry.

We welcome your comments at [validation@mail.wwpdb.org](mailto:validation@mail.wwpdb.org)

A user guide is available at

<https://www.wwpdb.org/validation/2017/XrayValidationReportHelp>

with specific help available everywhere you see the ⓘ symbol.

---

The following versions of software and data (see [references ⓘ](#)) were used in the production of this report:

MolProbity : 4.02b-467  
Mogul : 1.8.5 (274361), CSD as541be (2020)  
Xtriage (Phenix) : 1.13  
EDS : 2.16  
Percentile statistics : 20191225.v01 (using entries in the PDB archive December 25th 2019)  
Refmac : 5.8.0158  
CCP4 : 7.0.044 (Gargrove)  
Ideal geometry (proteins) : Engh & Huber (2001)  
Ideal geometry (DNA, RNA) : Parkinson et al. (1996)  
Validation Pipeline (wwPDB-VP) : 2.16

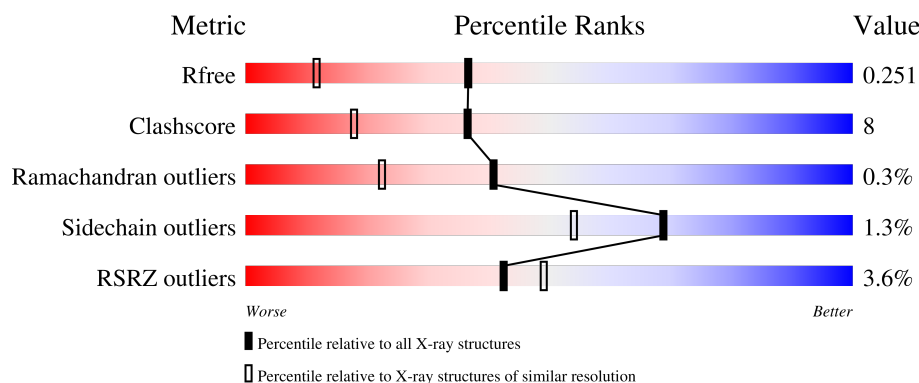
# 1 Overall quality at a glance

The following experimental techniques were used to determine the structure:

*X-RAY DIFFRACTION*

The reported resolution of this entry is 1.76 Å.

Percentile scores (ranging between 0-100) for global validation metrics of the entry are shown in the following graphic. The table shows the number of entries on which the scores are based.



Metric	Whole archive (#Entries)	Similar resolution (#Entries, resolution range(Å))
$R_{free}$	130704	2340 (1.76-1.76)
Clashscore	141614	2466 (1.76-1.76)
Ramachandran outliers	138981	2437 (1.76-1.76)
Sidechain outliers	138945	2437 (1.76-1.76)
RSRZ outliers	127900	2298 (1.76-1.76)

The table below summarises the geometric issues observed across the polymeric chains and their fit to the electron density. The red, orange, yellow and green segments of the lower bar indicate the fraction of residues that contain outliers for  $\geq 3$ , 2, 1 and 0 types of geometric quality criteria respectively. A grey segment represents the fraction of residues that are not modelled. The numeric value for each fraction is indicated below the corresponding segment, with a dot representing fractions  $\leq 5\%$ . The upper red bar (where present) indicates the fraction of residues that have poor fit to the electron density. The numeric value is given above the bar.

Mol	Chain	Length	Quality of chain
1	A	327	
1	B	327	

## 2 Entry composition [i](#)

There are 4 unique types of molecules in this entry. The entry contains 5018 atoms, of which 0 are hydrogens and 0 are deuteriums.

In the tables below, the ZeroOcc column contains the number of atoms modelled with zero occupancy, the AltConf column contains the number of residues with at least one atom in alternate conformation and the Trace column contains the number of residues modelled with at most 2 atoms.

- Molecule 1 is a protein called O-succinylbenzoate-CoA synthase.

Mol	Chain	Residues	Atoms						ZeroOcc	AltConf	Trace
1	A	311	Total	C	N	O	S	Se	0	0	0
			2349	1470	436	434	7	2			
1	B	311	Total	C	N	O	S	Se	0	0	0
			2349	1470	436	434	7	2			

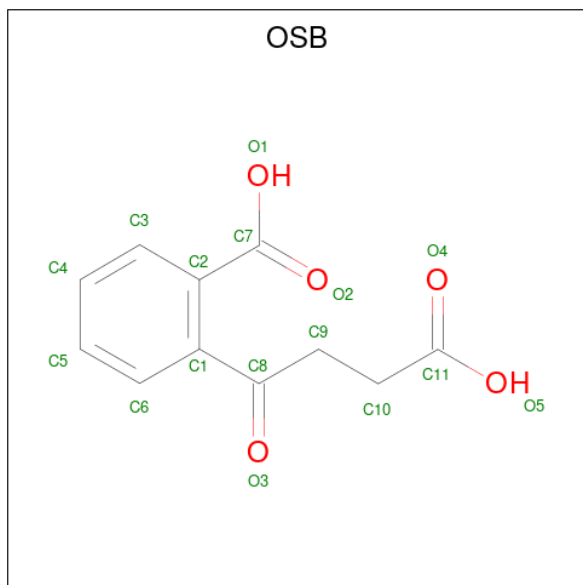
There are 22 discrepancies between the modelled and reference sequences:

Chain	Residue	Modelled	Actual	Comment	Reference
A	1	MSE	-	expression tag	UNP Q47Q21
A	2	SER	-	expression tag	UNP Q47Q21
A	3	LEU	-	expression tag	UNP Q47Q21
A	320	GLU	-	expression tag	UNP Q47Q21
A	321	GLY	-	expression tag	UNP Q47Q21
A	322	HIS	-	expression tag	UNP Q47Q21
A	323	HIS	-	expression tag	UNP Q47Q21
A	324	HIS	-	expression tag	UNP Q47Q21
A	325	HIS	-	expression tag	UNP Q47Q21
A	326	HIS	-	expression tag	UNP Q47Q21
A	327	HIS	-	expression tag	UNP Q47Q21
B	1	MSE	-	expression tag	UNP Q47Q21
B	2	SER	-	expression tag	UNP Q47Q21
B	3	LEU	-	expression tag	UNP Q47Q21
B	320	GLU	-	expression tag	UNP Q47Q21
B	321	GLY	-	expression tag	UNP Q47Q21
B	322	HIS	-	expression tag	UNP Q47Q21
B	323	HIS	-	expression tag	UNP Q47Q21
B	324	HIS	-	expression tag	UNP Q47Q21
B	325	HIS	-	expression tag	UNP Q47Q21
B	326	HIS	-	expression tag	UNP Q47Q21
B	327	HIS	-	expression tag	UNP Q47Q21

- Molecule 2 is MAGNESIUM ION (three-letter code: MG) (formula: Mg).

Mol	Chain	Residues	Atoms	ZeroOcc	AltConf
2	B	1	Total Mg 1 1	0	0
2	A	1	Total Mg 1 1	0	0

- Molecule 3 is 2-SUCCINYLBENZOATE (three-letter code: OSB) (formula: C<sub>11</sub>H<sub>10</sub>O<sub>5</sub>).



Mol	Chain	Residues	Atoms	ZeroOcc	AltConf
3	A	1	Total C O 16 11 5	0	0
3	B	1	Total C O 16 11 5	0	0

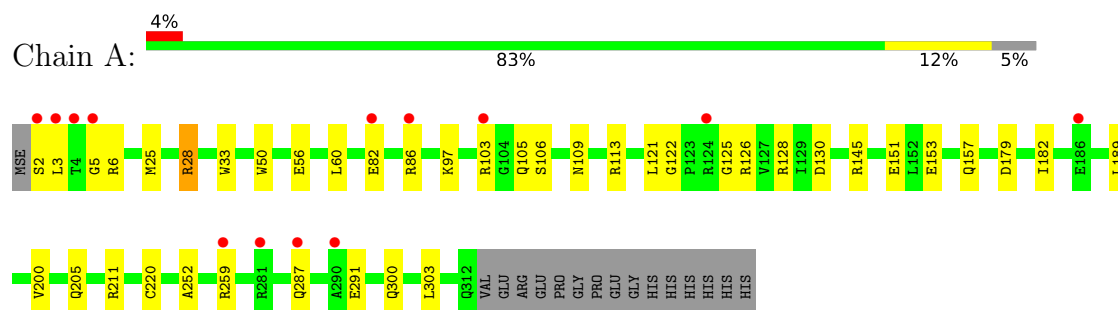
- Molecule 4 is water.

Mol	Chain	Residues	Atoms	ZeroOcc	AltConf
4	A	138	Total O 138 138	0	0
4	B	148	Total O 148 148	0	0

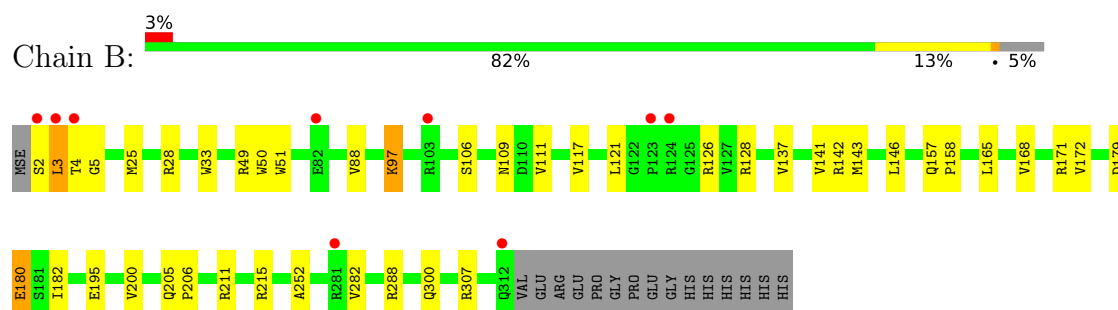
### 3 Residue-property plots [i](#)

These plots are drawn for all protein, RNA, DNA and oligosaccharide chains in the entry. The first graphic for a chain summarises the proportions of the various outlier classes displayed in the second graphic. The second graphic shows the sequence view annotated by issues in geometry and electron density. Residues are color-coded according to the number of geometric quality criteria for which they contain at least one outlier: green = 0, yellow = 1, orange = 2 and red = 3 or more. A red dot above a residue indicates a poor fit to the electron density ( $RSRZ > 2$ ). Stretches of 2 or more consecutive residues without any outlier are shown as a green connector. Residues present in the sample, but not in the model, are shown in grey.

#### • Molecule 1: O-succinylbenzoate-CoA synthase



#### • Molecule 1: O-succinylbenzoate-CoA synthase



## 4 Data and refinement statistics

Property	Value	Source
Space group	P 1	Depositor
Cell constants a, b, c, $\alpha$ , $\beta$ , $\gamma$	44.54Å 52.88Å 61.45Å 70.53° 87.22° 85.56°	Depositor
Resolution (Å)	34.25 – 1.76 49.75 – 1.76	Depositor EDS
% Data completeness (in resolution range)	91.1 (34.25-1.76) 91.3 (49.75-1.76)	Depositor EDS
$R_{merge}$	0.04	Depositor
$R_{sym}$	(Not available)	Depositor
$\langle I/\sigma(I) \rangle$ <sup>1</sup>	11.32 (at 1.76Å)	Xtrriage
Refinement program	CNS 1.1	Depositor
R, $R_{free}$	0.218 , 0.251 0.217 , 0.251	Depositor DCC
$R_{free}$ test set	2875 reflections (5.98%)	wwPDB-VP
Wilson B-factor (Å <sup>2</sup> )	14.9	Xtrriage
Anisotropy	0.390	Xtrriage
Bulk solvent $k_{sol}$ (e/Å <sup>3</sup> ), $B_{sol}$ (Å <sup>2</sup> )	0.41 , 50.8	EDS
L-test for twinning <sup>2</sup>	$\langle  L  \rangle = 0.49$ , $\langle L^2 \rangle = 0.33$	Xtrriage
Estimated twinning fraction	No twinning to report.	Xtrriage
$F_o, F_c$ correlation	0.94	EDS
Total number of atoms	5018	wwPDB-VP
Average B, all atoms (Å <sup>2</sup> )	19.0	wwPDB-VP

Xtrriage's analysis on translational NCS is as follows: *The analyses of the Patterson function reveals a significant off-origin peak that is 77.56 % of the origin peak, indicating pseudo-translational symmetry. The chance of finding a peak of this or larger height randomly in a structure without pseudo-translational symmetry is equal to 8.3023e-07. The detected translational NCS is most likely also responsible for the elevated intensity ratio.*

<sup>1</sup>Intensities estimated from amplitudes.

<sup>2</sup>Theoretical values of  $\langle |L| \rangle$ ,  $\langle L^2 \rangle$  for acentric reflections are 0.5, 0.333 respectively for untwinned datasets, and 0.375, 0.2 for perfectly twinned datasets.

## 5 Model quality

### 5.1 Standard geometry

Bond lengths and bond angles in the following residue types are not validated in this section: MG, OSB

The Z score for a bond length (or angle) is the number of standard deviations the observed value is removed from the expected value. A bond length (or angle) with  $|Z| > 5$  is considered an outlier worth inspection. RMSZ is the root-mean-square of all Z scores of the bond lengths (or angles).

Mol	Chain	Bond lengths		Bond angles	
		RMSZ	$\# Z  > 5$	RMSZ	$\# Z  > 5$
1	A	0.29	0/2391	0.58	0/3262
1	B	0.28	0/2391	0.59	0/3262
All	All	0.28	0/4782	0.58	0/6524

There are no bond length outliers.

There are no bond angle outliers.

There are no chirality outliers.

There are no planarity outliers.

### 5.2 Too-close contacts

In the following table, the Non-H and H(model) columns list the number of non-hydrogen atoms and hydrogen atoms in the chain respectively. The H(added) column lists the number of hydrogen atoms added and optimized by MolProbity. The Clashes column lists the number of clashes within the asymmetric unit, whereas Symm-Clashes lists symmetry-related clashes.

Mol	Chain	Non-H	H(model)	H(added)	Clashes	Symm-Clashes
1	A	2349	0	2364	37	0
1	B	2349	0	2364	38	0
2	A	1	0	0	0	0
2	B	1	0	0	0	0
3	A	16	0	8	0	0
3	B	16	0	8	0	0
4	A	138	0	0	10	0
4	B	148	0	0	4	0
All	All	5018	0	4744	75	0

The all-atom clashscore is defined as the number of clashes found per 1000 atoms (including hydrogen atoms). The all-atom clashscore for this structure is 8.

All (75) close contacts within the same asymmetric unit are listed below, sorted by their clash magnitude.

Atom-1	Atom-2	Interatomic distance (Å)	Clash overlap (Å)
1:A:105:GLN:HE22	1:A:113:ARG:HH22	1.09	0.95
1:B:126:ARG:NH2	1:B:128:ARG:HH21	1.73	0.86
1:B:126:ARG:HH21	1:B:128:ARG:HH21	1.23	0.83
1:A:105:GLN:NE2	1:A:113:ARG:HH22	1.76	0.83
1:A:56:GLU:HG3	4:A:5643:HOH:O	1.79	0.83
1:A:105:GLN:HE22	1:A:113:ARG:NH2	1.80	0.79
1:A:106:SER:H	1:A:109:ASN:HD22	1.31	0.78
1:B:142:ARG:NH1	1:B:143:MSE:HE3	2.02	0.75
1:A:60:LEU:HB2	4:A:5643:HOH:O	1.88	0.72
1:A:5:GLY:HA3	1:A:25:MSE:HE3	1.72	0.70
1:B:97:LYS:HG2	1:B:128:ARG:HB2	1.75	0.69
1:A:126:ARG:NH2	1:A:128:ARG:HH21	1.91	0.68
1:B:157:GLN:HG2	1:B:180:GLU:HG2	1.76	0.67
1:B:288:ARG:HD3	4:B:5663:HOH:O	1.93	0.66
1:B:143:MSE:CE	1:B:146:LEU:HD12	2.26	0.66
1:B:143:MSE:HE1	1:B:146:LEU:HD12	1.78	0.66
1:B:3:LEU:HD22	1:B:3:LEU:H	1.61	0.65
1:A:106:SER:H	1:A:109:ASN:ND2	1.93	0.64
1:B:142:ARG:HH11	1:B:143:MSE:HE3	1.64	0.62
1:A:126:ARG:HH21	1:A:128:ARG:HH21	1.48	0.61
1:B:106:SER:H	1:B:109:ASN:HD22	1.46	0.61
1:B:28:ARG:HD3	1:B:33:TRP:CE2	2.36	0.60
1:B:126:ARG:NH2	1:B:128:ARG:NH2	2.48	0.60
1:A:82:GLU:O	1:A:86:ARG:HG3	2.02	0.60
1:A:2:SER:OG	1:A:6:ARG:HG2	2.02	0.60
1:A:259:ARG:HG3	4:A:5585:HOH:O	2.01	0.59
1:A:103:ARG:HG2	4:A:5611:HOH:O	2.02	0.59
1:B:25:MSE:HE1	1:B:300:GLN:HG3	1.84	0.58
1:B:157:GLN:HE21	1:B:179:ASP:H	1.49	0.58
1:B:126:ARG:HH22	1:B:252:ALA:H	1.52	0.57
1:B:88:VAL:HG11	1:B:121:LEU:HG	1.85	0.57
1:A:28:ARG:HG2	1:A:33:TRP:CE2	2.39	0.56
1:B:49:ARG:HG3	4:B:5621:HOH:O	2.07	0.55
1:B:3:LEU:HD22	1:B:3:LEU:N	2.22	0.55
1:A:25:MSE:HE2	1:A:303:LEU:HD13	1.88	0.55
1:A:157:GLN:HE21	1:A:179:ASP:H	1.57	0.53
1:B:157:GLN:NE2	1:B:179:ASP:H	2.07	0.53
1:B:282:VAL:HG22	4:B:5659:HOH:O	2.08	0.52
1:A:287:GLN:O	1:A:291:GLU:HG3	2.11	0.51
1:B:168:VAL:O	1:B:172:VAL:HG22	2.11	0.51

*Continued on next page...*



*Continued from previous page...*

Atom-1	Atom-2	Interatomic distance (Å)	Clash overlap (Å)
1:A:157:GLN:NE2	1:A:179:ASP:H	2.10	0.50
1:B:88:VAL:HG21	1:B:117:VAL:HG13	1.93	0.50
1:A:126:ARG:HH22	1:A:252:ALA:H	1.60	0.49
1:A:5:GLY:HA3	4:A:5655:HOH:O	2.13	0.48
1:B:158:PRO:HD2	1:B:165:LEU:HD22	1.95	0.48
1:B:106:SER:H	1:B:109:ASN:ND2	2.12	0.48
1:A:97:LYS:HE2	1:A:130:ASP:HB2	1.96	0.47
1:B:143:MSE:HE2	1:B:143:MSE:HA	1.96	0.47
1:B:2:SER:HB3	1:B:300:GLN:HE22	1.79	0.47
1:A:86:ARG:HG2	1:A:86:ARG:NH1	2.29	0.46
1:B:143:MSE:HE2	1:B:146:LEU:HD12	1.98	0.46
1:A:211:ARG:NH1	4:A:5643:HOH:O	2.47	0.46
1:A:28:ARG:HG2	1:A:33:TRP:CZ2	2.51	0.45
1:A:25:MSE:CE	1:A:303:LEU:HD13	2.47	0.45
1:A:25:MSE:HE1	1:A:300:GLN:OE1	2.16	0.45
1:B:51:TRP:CD1	1:B:307:ARG:HA	2.52	0.44
1:B:157:GLN:HG2	1:B:180:GLU:CG	2.45	0.44
1:B:211:ARG:HB3	1:B:215:ARG:HH12	1.82	0.44
1:A:182:ILE:HG13	1:A:200:VAL:HG13	1.98	0.44
1:A:122:GLY:HA3	4:A:5684:HOH:O	2.17	0.43
1:B:137:VAL:O	1:B:141:VAL:HG23	2.18	0.43
1:A:126:ARG:NE	1:A:153:GLU:OE2	2.52	0.43
1:A:50:TRP:CE3	1:A:205:GLN:HB3	2.54	0.43
1:A:259:ARG:NH2	4:A:5586:HOH:O	2.50	0.43
1:B:50:TRP:CZ2	1:B:206:PRO:HG3	2.53	0.43
1:A:86:ARG:HH11	1:A:86:ARG:HG2	1.84	0.42
1:B:111:VAL:HB	4:B:5696:HOH:O	2.18	0.42
1:A:126:ARG:NH2	1:A:128:ARG:NH2	2.62	0.42
1:A:220:CYS:HB2	4:A:5616:HOH:O	2.20	0.42
1:B:137:VAL:HG12	1:B:171:ARG:NH2	2.35	0.41
1:A:121:LEU:HB3	1:A:125:GLY:HA3	2.01	0.41
1:B:182:ILE:HG13	1:B:200:VAL:HG13	2.02	0.41
1:B:4:THR:OG1	1:B:5:GLY:N	2.53	0.41
1:B:205:GLN:HB2	1:B:206:PRO:HD3	2.02	0.41
1:A:145:ARG:NH2	4:A:5596:HOH:O	2.54	0.40

There are no symmetry-related clashes.

## 5.3 Torsion angles

### 5.3.1 Protein backbone

In the following table, the Percentiles column shows the percent Ramachandran outliers of the chain as a percentile score with respect to all X-ray entries followed by that with respect to entries of similar resolution.

The Analysed column shows the number of residues for which the backbone conformation was analysed, and the total number of residues.

Mol	Chain	Analysed	Favoured	Allowed	Outliers	Percentiles	
1	A	309/327 (94%)	299 (97%)	8 (3%)	2 (1%)	25	10
1	B	309/327 (94%)	301 (97%)	8 (3%)	0	100	100
All	All	618/654 (94%)	600 (97%)	16 (3%)	2 (0%)	41	22

All (2) Ramachandran outliers are listed below:

Mol	Chain	Res	Type
1	A	3	LEU
1	A	151	GLU

### 5.3.2 Protein sidechains

In the following table, the Percentiles column shows the percent sidechain outliers of the chain as a percentile score with respect to all X-ray entries followed by that with respect to entries of similar resolution.

The Analysed column shows the number of residues for which the sidechain conformation was analysed, and the total number of residues.

Mol	Chain	Analysed	Rotameric	Outliers	Percentiles	
1	A	236/247 (96%)	234 (99%)	2 (1%)	81	72
1	B	236/247 (96%)	232 (98%)	4 (2%)	60	42
All	All	472/494 (96%)	466 (99%)	6 (1%)	69	54

All (6) residues with a non-rotameric sidechain are listed below:

Mol	Chain	Res	Type
1	A	28	ARG
1	A	189	LEU
1	B	3	LEU
1	B	97	LYS

*Continued on next page...*

*Continued from previous page...*

Mol	Chain	Res	Type
1	B	180	GLU
1	B	195	GLU

Sometimes sidechains can be flipped to improve hydrogen bonding and reduce clashes. All (5) such sidechains are listed below:

Mol	Chain	Res	Type
1	A	105	GLN
1	A	109	ASN
1	A	157	GLN
1	B	109	ASN
1	B	157	GLN

### 5.3.3 RNA [i](#)

There are no RNA molecules in this entry.

## 5.4 Non-standard residues in protein, DNA, RNA chains [i](#)

There are no non-standard protein/DNA/RNA residues in this entry.

## 5.5 Carbohydrates [i](#)

There are no monosaccharides in this entry.

## 5.6 Ligand geometry [i](#)

Of 4 ligands modelled in this entry, 2 are monoatomic - leaving 2 for Mogul analysis.

In the following table, the Counts columns list the number of bonds (or angles) for which Mogul statistics could be retrieved, the number of bonds (or angles) that are observed in the model and the number of bonds (or angles) that are defined in the Chemical Component Dictionary. The Link column lists molecule types, if any, to which the group is linked. The Z score for a bond length (or angle) is the number of standard deviations the observed value is removed from the expected value. A bond length (or angle) with  $|Z| > 2$  is considered an outlier worth inspection. RMSZ is the root-mean-square of all Z scores of the bond lengths (or angles).

Mol	Type	Chain	Res	Link	Bond lengths			Bond angles		
					Counts	RMSZ	$\# Z  > 2$	Counts	RMSZ	$\# Z  > 2$
3	OSB	B	5551	2	11,16,16	1.80	1 (9%)	13,21,21	0.74	0
3	OSB	A	5550	2	11,16,16	1.71	2 (18%)	13,21,21	0.64	0

In the following table, the Chirals column lists the number of chiral outliers, the number of chiral centers analysed, the number of these observed in the model and the number defined in the Chemical Component Dictionary. Similar counts are reported in the Torsion and Rings columns. '-' means no outliers of that kind were identified.

Mol	Type	Chain	Res	Link	Chirals	Torsions	Rings
3	OSB	B	5551	2	-	2/7/13/13	0/1/1/1
3	OSB	A	5550	2	-	2/7/13/13	0/1/1/1

All (3) bond length outliers are listed below:

Mol	Chain	Res	Type	Atoms	Z	Observed(Å)	Ideal(Å)
3	B	5551	OSB	C1-C2	4.56	1.47	1.40
3	A	5550	OSB	C1-C2	4.02	1.47	1.40
3	A	5550	OSB	C2-C7	2.15	1.49	1.47

There are no bond angle outliers.

There are no chirality outliers.

All (4) torsion outliers are listed below:

Mol	Chain	Res	Type	Atoms
3	B	5551	OSB	C1-C8-C9-C10
3	A	5550	OSB	C6-C1-C8-O3
3	A	5550	OSB	C6-C1-C8-C9
3	B	5551	OSB	C6-C1-C8-C9

There are no ring outliers.

No monomer is involved in short contacts.

## 5.7 Other polymers [i](#)

There are no such residues in this entry.

## 5.8 Polymer linkage issues [i](#)

There are no chain breaks in this entry.

## 6 Fit of model and data

### 6.1 Protein, DNA and RNA chains

In the following table, the column labelled ‘#RSRZ > 2’ contains the number (and percentage) of RSRZ outliers, followed by percent RSRZ outliers for the chain as percentile scores relative to all X-ray entries and entries of similar resolution. The OWAB column contains the minimum, median, 95<sup>th</sup> percentile and maximum values of the occupancy-weighted average B-factor per residue. The column labelled ‘Q < 0.9’ lists the number of (and percentage) of residues with an average occupancy less than 0.9.

Mol	Chain	Analysed	<RSRZ>	#RSRZ>2	OWAB(Å <sup>2</sup> )	Q<0.9
1	A	309/327 (94%)	0.15	13 (4%) 36 42	8, 17, 34, 54	0
1	B	309/327 (94%)	0.04	9 (2%) 51 57	8, 17, 31, 54	0
All	All	618/654 (94%)	0.10	22 (3%) 42 49	8, 17, 32, 54	0

All (22) RSRZ outliers are listed below:

Mol	Chain	Res	Type	RSRZ
1	A	3	LEU	13.1
1	B	3	LEU	10.4
1	B	2	SER	10.1
1	B	4	THR	8.4
1	A	4	THR	8.0
1	A	2	SER	6.5
1	A	86	ARG	3.7
1	B	124	ARG	3.5
1	A	124	ARG	3.1
1	B	281	ARG	3.1
1	B	312	GLN	3.0
1	A	5	GLY	3.0
1	A	103	ARG	2.7
1	A	82	GLU	2.4
1	A	281	ARG	2.4
1	B	123	PRO	2.4
1	A	186	GLU	2.4
1	A	290	ALA	2.3
1	B	103	ARG	2.2
1	A	287	GLN	2.2
1	B	82	GLU	2.1
1	A	259	ARG	2.1

## 6.2 Non-standard residues in protein, DNA, RNA chains [i](#)

There are no non-standard protein/DNA/RNA residues in this entry.

## 6.3 Carbohydrates [i](#)

There are no monosaccharides in this entry.

## 6.4 Ligands [i](#)

In the following table, the Atoms column lists the number of modelled atoms in the group and the number defined in the chemical component dictionary. The B-factors column lists the minimum, median, 95<sup>th</sup> percentile and maximum values of B factors of atoms in the group. The column labelled 'Q< 0.9' lists the number of atoms with occupancy less than 0.9.

Mol	Type	Chain	Res	Atoms	RSCC	RSR	B-factors( $\text{\AA}^2$ )	Q<0.9
3	OSB	A	5550	16/16	0.94	0.10	12,15,16,17	0
3	OSB	B	5551	16/16	0.94	0.10	10,14,15,16	0
2	MG	B	400	1/1	0.99	0.06	10,10,10,10	0
2	MG	A	401	1/1	0.99	0.03	13,13,13,13	0

## 6.5 Other polymers [i](#)

There are no such residues in this entry.