



Full wwPDB X-ray Structure Validation Report ⓘ

May 25, 2020 – 01:45 pm BST

PDB ID : 6QW1
Title : The Transcriptional Regulator PrfA-L140F mutant from *Listeria Monocytogenes*
Authors : Hall, M.; Grundstrom, C.; Hansen, S.; Brannstrom, K.; Johansson, J.; Sauer-Eriksson, A.E.
Deposited on : 2019-03-05
Resolution : 1.84 Å(reported)

This is a Full wwPDB X-ray Structure Validation Report for a publicly released PDB entry.

We welcome your comments at validation@mail.wwpdb.org

A user guide is available at

<https://www.wwpdb.org/validation/2017/XrayValidationReportHelp>

with specific help available everywhere you see the ⓘ symbol.

The following versions of software and data (see [references ⓘ](#)) were used in the production of this report:

MolProbity : 4.02b-467
Mogul : 1.8.5 (274361), CSD as541be (2020)
Xtriage (Phenix) : 1.13
EDS : 2.11
Percentile statistics : 20191225.v01 (using entries in the PDB archive December 25th 2019)
Refmac : 5.8.0158
CCP4 : 7.0.044 (Gargrove)
Ideal geometry (proteins) : Engh & Huber (2001)
Ideal geometry (DNA, RNA) : Parkinson et al. (1996)
Validation Pipeline (wwPDB-VP) : 2.11

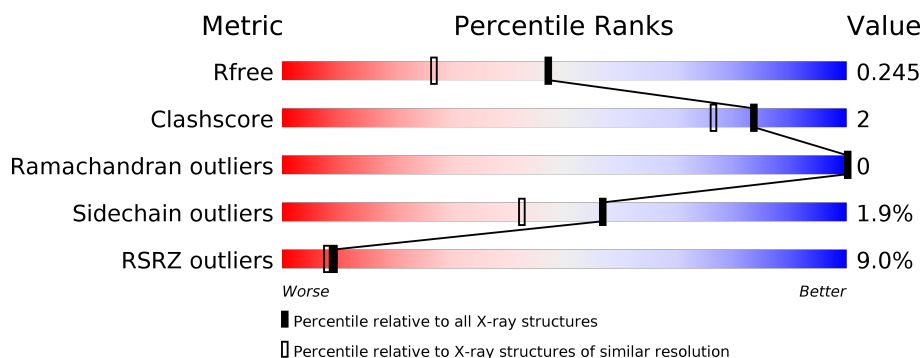
1 Overall quality at a glance

The following experimental techniques were used to determine the structure:

X-RAY DIFFRACTION

The reported resolution of this entry is 1.84 Å.

Percentile scores (ranging between 0-100) for global validation metrics of the entry are shown in the following graphic. The table shows the number of entries on which the scores are based.



Metric	Whole archive (#Entries)	Similar resolution (#Entries, resolution range(Å))
R_{free}	130704	4003 (1.86-1.82)
Clashscore	141614	4233 (1.86-1.82)
Ramachandran outliers	138981	4185 (1.86-1.82)
Sidechain outliers	138945	4186 (1.86-1.82)
RSRZ outliers	127900	3957 (1.86-1.82)

The table below summarises the geometric issues observed across the polymeric chains and their fit to the electron density. The red, orange, yellow and green segments on the lower bar indicate the fraction of residues that contain outliers for ≥ 3 , 2, 1 and 0 types of geometric quality criteria respectively. A grey segment represents the fraction of residues that are not modelled. The numeric value for each fraction is indicated below the corresponding segment, with a dot representing fractions $\leq 5\%$. The upper red bar (where present) indicates the fraction of residues that have poor fit to the electron density. The numeric value is given above the bar.

Mol	Chain	Length	Quality of chain
1	A	239	<div> <div>2%</div> <div> <div></div> <div>89%</div> <div>7%</div> <div>.</div> </div> </div>
1	B	239	<div> <div>15%</div> <div> <div></div> <div>92%</div> <div>6%</div> <div>..</div> </div> </div>

2 Entry composition [i](#)

There are 4 unique types of molecules in this entry. The entry contains 4255 atoms, of which 0 are hydrogens and 0 are deuteriums.

In the tables below, the ZeroOcc column contains the number of atoms modelled with zero occupancy, the AltConf column contains the number of residues with at least one atom in alternate conformation and the Trace column contains the number of residues modelled with at most 2 atoms.

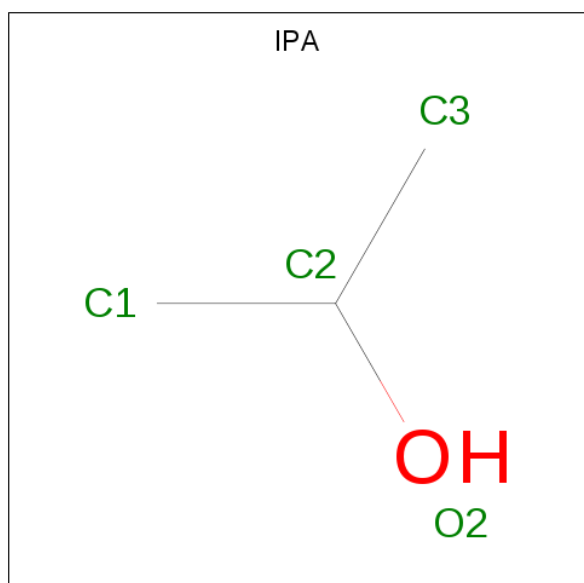
- Molecule 1 is a protein called Listeriolysin positive regulatory factor A.

Mol	Chain	Residues	Atoms					ZeroOcc	AltConf	Trace
1	A	230	Total	C	N	O	S	0	10	0
			1966	1284	308	367	7			
1	B	236	Total	C	N	O	S	0	1	0
			1932	1261	302	362	7			

There are 6 discrepancies between the modelled and reference sequences:

Chain	Residue	Modelled	Actual	Comment	Reference
A	-1	GLY	-	expression tag	UNP Q4TVQ0
A	0	ALA	-	expression tag	UNP Q4TVQ0
A	140	PHE	LEU	engineered mutation	UNP Q4TVQ0
B	-1	GLY	-	expression tag	UNP Q4TVQ0
B	0	ALA	-	expression tag	UNP Q4TVQ0
B	140	PHE	LEU	engineered mutation	UNP Q4TVQ0

- Molecule 2 is ISOPROPYL ALCOHOL (three-letter code: IPA) (formula: C₃H₈O).



Mol	Chain	Residues	Atoms	ZeroOcc	AltConf
2	A	1	Total C O 4 3 1	0	0
2	A	1	Total C O 4 3 1	0	0
2	A	1	Total C O 4 3 1	0	0
2	A	1	Total C O 4 3 1	0	0
2	B	1	Total C O 4 3 1	0	0
2	B	1	Total C O 4 3 1	0	0
2	B	1	Total C O 4 3 1	0	0

- Molecule 3 is SODIUM ION (three-letter code: NA) (formula: Na).

Mol	Chain	Residues	Atoms	ZeroOcc	AltConf
3	B	1	Total Na 1 1	0	0
3	A	2	Total Na 2 2	0	0

- Molecule 4 is water.

Mol	Chain	Residues	Atoms	ZeroOcc	AltConf
4	A	174	Total O 176 176	0	3
4	B	144	Total O 150 150	0	7

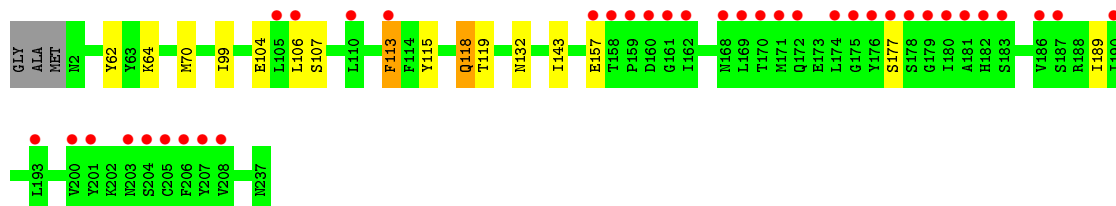
3 Residue-property plots [i](#)

These plots are drawn for all protein, RNA and DNA chains in the entry. The first graphic for a chain summarises the proportions of the various outlier classes displayed in the second graphic. The second graphic shows the sequence view annotated by issues in geometry and electron density. Residues are color-coded according to the number of geometric quality criteria for which they contain at least one outlier: green = 0, yellow = 1, orange = 2 and red = 3 or more. A red dot above a residue indicates a poor fit to the electron density ($RSRZ > 2$). Stretches of 2 or more consecutive residues without any outlier are shown as a green connector. Residues present in the sample, but not in the model, are shown in grey.

- Molecule 1: Listeriolysin positive regulatory factor A



- Molecule 1: Listeriolysin positive regulatory factor A



4 Data and refinement statistics

Property	Value	Source
Space group	P 21 21 21	Depositor
Cell constants a, b, c, α , β , γ	47.63 Å 88.81 Å 115.44 Å 90.00° 90.00° 90.00°	Depositor
Resolution (Å)	48.40 – 1.84 48.40 – 1.84	Depositor EDS
% Data completeness (in resolution range)	99.5 (48.40-1.84) 99.5 (48.40-1.84)	Depositor EDS
R_{merge}	0.08	Depositor
R_{sym}	(Not available)	Depositor
$\langle I/\sigma(I) \rangle$ ¹	1.34 (at 1.84 Å)	Xtriage
Refinement program	PHENIX (1.10.1 _2155: ???)	Depositor
R, R_{free}	0.181 , 0.241 0.189 , 0.245	Depositor DCC
R_{free} test set	2070 reflections (4.83%)	wwPDB-VP
Wilson B-factor (Å ²)	30.7	Xtriage
Anisotropy	0.271	Xtriage
Bulk solvent k_{sol} (e/Å ³), B_{sol} (Å ²)	0.32 , 56.0	EDS
L-test for twinning ²	$\langle L \rangle = 0.49$, $\langle L^2 \rangle = 0.32$	Xtriage
Estimated twinning fraction	No twinning to report.	Xtriage
F_o, F_c correlation	0.96	EDS
Total number of atoms	4255	wwPDB-VP
Average B, all atoms (Å ²)	44.0	wwPDB-VP

Xtriage's analysis on translational NCS is as follows: *The largest off-origin peak in the Patterson function is 4.93% of the height of the origin peak. No significant pseudotranslation is detected.*

¹Intensities estimated from amplitudes.

²Theoretical values of $\langle |L| \rangle$, $\langle L^2 \rangle$ for acentric reflections are 0.5, 0.333 respectively for untwinned datasets, and 0.375, 0.2 for perfectly twinned datasets.

5 Model quality

5.1 Standard geometry

Bond lengths and bond angles in the following residue types are not validated in this section: NA, IPA

The Z score for a bond length (or angle) is the number of standard deviations the observed value is removed from the expected value. A bond length (or angle) with $|Z| > 5$ is considered an outlier worth inspection. RMSZ is the root-mean-square of all Z scores of the bond lengths (or angles).

Mol	Chain	Bond lengths		Bond angles	
		RMSZ	$\# Z > 5$	RMSZ	$\# Z > 5$
1	A	0.62	0/2010	0.68	0/2712
1	B	0.61	0/1977	0.66	0/2669
All	All	0.61	0/3987	0.67	0/5381

There are no bond length outliers.

There are no bond angle outliers.

There are no chirality outliers.

There are no planarity outliers.

5.2 Too-close contacts

In the following table, the Non-H and H(model) columns list the number of non-hydrogen atoms and hydrogen atoms in the chain respectively. The H(added) column lists the number of hydrogen atoms added and optimized by MolProbity. The Clashes column lists the number of clashes within the asymmetric unit, whereas Symm-Clashes lists symmetry related clashes.

Mol	Chain	Non-H	H(model)	H(added)	Clashes	Symm-Clashes
1	A	1966	0	1954	11	0
1	B	1932	0	1923	11	0
2	A	16	0	32	1	0
2	B	12	0	24	2	0
3	A	2	0	0	0	0
3	B	1	0	0	0	0
4	A	176	0	0	0	0
4	B	150	0	0	0	0
All	All	4255	0	3933	19	0

The all-atom clashscore is defined as the number of clashes found per 1000 atoms (including hydrogen atoms). The all-atom clashscore for this structure is 2.

All (19) close contacts within the same asymmetric unit are listed below, sorted by their clash magnitude.

Atom-1	Atom-2	Interatomic distance (Å)	Clash overlap (Å)
1:A:216:ARG:HD2	2:A:304:IPA:H31	1.70	0.73
1:B:62:TYR:CE1	1:B:177:SER:HA	2.35	0.62
1:A:113:PHE:CE1	1:B:113:PHE:CE1	2.90	0.58
1:A:113:PHE:CD1	1:B:113:PHE:CZ	2.91	0.58
1:B:115:TYR:O	1:B:118:GLN:NE2	2.41	0.53
1:B:115:TYR:O	1:B:119:THR:HG23	2.10	0.51
1:A:47:LYS:HE2	1:A:88[A]:ILE:HD11	1.96	0.48
1:A:113:PHE:CE1	1:B:113:PHE:CD1	3.03	0.47
1:B:64:LYS:HB3	2:B:303:IPA:H12	1.96	0.46
1:B:106:LEU:HD13	1:B:113:PHE:CD1	2.50	0.46
1:B:70:MET:CE	1:B:99:ILE:HD11	2.47	0.44
1:B:143:ILE:HD12	1:B:189:ILE:HD13	1.99	0.44
1:A:15:ASN:OD1	1:A:108:LYS:NZ	2.51	0.44
1:A:124:VAL:HG12	2:B:302:IPA:H31	2.00	0.43
1:A:52:SER:OG	1:A:54:ASN:OD1	2.36	0.43
1:A:41:LEU:O	1:A:66:ALA:HA	2.17	0.43
1:A:149[A]:ILE:HD11	1:A:221[A]:LEU:HG	2.00	0.42
1:A:149[B]:ILE:HG22	1:A:150:LEU:N	2.35	0.42
1:B:104:GLU:O	1:B:107:SER:HB2	2.20	0.42

There are no symmetry-related clashes.

5.3 Torsion angles [i](#)

5.3.1 Protein backbone [i](#)

In the following table, the Percentiles column shows the percent Ramachandran outliers of the chain as a percentile score with respect to all X-ray entries followed by that with respect to entries of similar resolution.

The Analysed column shows the number of residues for which the backbone conformation was analysed, and the total number of residues.

Mol	Chain	Analysed	Favoured	Allowed	Outliers	Percentiles	
1	A	236/239 (99%)	230 (98%)	6 (2%)	0	100	100
1	B	235/239 (98%)	229 (97%)	6 (3%)	0	100	100
All	All	471/478 (98%)	459 (98%)	12 (2%)	0	100	100

There are no Ramachandran outliers to report.

5.3.2 Protein sidechains ⓘ

In the following table, the Percentiles column shows the percent sidechain outliers of the chain as a percentile score with respect to all X-ray entries followed by that with respect to entries of similar resolution.

The Analysed column shows the number of residues for which the sidechain conformation was analysed, and the total number of residues.

Mol	Chain	Analysed	Rotameric	Outliers	Percentiles	
1	A	217/212 (102%)	213 (98%)	4 (2%)	59	44
1	B	212/212 (100%)	208 (98%)	4 (2%)	57	42
All	All	429/424 (101%)	421 (98%)	8 (2%)	57	42

All (8) residues with a non-rotameric sidechain are listed below:

Mol	Chain	Res	Type
1	A	64	LYS
1	A	113	PHE
1	A	118	GLN
1	A	157	GLU
1	B	113	PHE
1	B	118	GLN
1	B	132	ASN
1	B	157	GLU

Some sidechains can be flipped to improve hydrogen bonding and reduce clashes. All (2) such sidechains are listed below:

Mol	Chain	Res	Type
1	B	4	GLN
1	B	112	HIS

5.3.3 RNA ⓘ

There are no RNA molecules in this entry.

5.4 Non-standard residues in protein, DNA, RNA chains ⓘ

There are no non-standard protein/DNA/RNA residues in this entry.

5.5 Carbohydrates [i](#)

There are no carbohydrates in this entry.

5.6 Ligand geometry [i](#)

Of 10 ligands modelled in this entry, 3 are monoatomic - leaving 7 for Mogul analysis.

In the following table, the Counts columns list the number of bonds (or angles) for which Mogul statistics could be retrieved, the number of bonds (or angles) that are observed in the model and the number of bonds (or angles) that are defined in the Chemical Component Dictionary. The Link column lists molecule types, if any, to which the group is linked. The Z score for a bond length (or angle) is the number of standard deviations the observed value is removed from the expected value. A bond length (or angle) with $|Z| > 2$ is considered an outlier worth inspection. RMSZ is the root-mean-square of all Z scores of the bond lengths (or angles).

Mol	Type	Chain	Res	Link	Bond lengths			Bond angles		
					Counts	RMSZ	$\# Z > 2$	Counts	RMSZ	$\# Z > 2$
2	IPA	A	304	-	3,3,3	0.66	0	3,3,3	0.17	0
2	IPA	B	302	-	3,3,3	0.48	0	3,3,3	0.29	0
2	IPA	B	301	-	3,3,3	0.41	0	3,3,3	0.25	0
2	IPA	A	301	-	3,3,3	0.43	0	3,3,3	0.18	0
2	IPA	A	302	-	3,3,3	0.41	0	3,3,3	0.21	0
2	IPA	B	303	-	3,3,3	0.55	0	3,3,3	0.18	0
2	IPA	A	303	-	3,3,3	0.58	0	3,3,3	0.27	0

There are no bond length outliers.

There are no bond angle outliers.

There are no chirality outliers.

There are no torsion outliers.

There are no ring outliers.

3 monomers are involved in 3 short contacts:

Mol	Chain	Res	Type	Clashes	Symm-Clashes
2	A	304	IPA	1	0
2	B	302	IPA	1	0
2	B	303	IPA	1	0

5.7 Other polymers [i](#)

There are no such residues in this entry.

5.8 Polymer linkage issues ⓘ

There are no chain breaks in this entry.

6 Fit of model and data

6.1 Protein, DNA and RNA chains

In the following table, the column labelled ‘#RSRZ> 2’ contains the number (and percentage) of RSRZ outliers, followed by percent RSRZ outliers for the chain as percentile scores relative to all X-ray entries and entries of similar resolution. The OWAB column contains the minimum, median, 95th percentile and maximum values of the occupancy-weighted average B-factor per residue. The column labelled ‘Q< 0.9’ lists the number of (and percentage) of residues with an average occupancy less than 0.9.

Mol	Chain	Analysed	<RSRZ>	#RSRZ>2	OWAB(Å ²)	Q<0.9
1	A	230/239 (96%)	-0.02	5 (2%) 62 60	20, 36, 66, 122	0
1	B	236/239 (98%)	0.69	37 (15%) 2 1	21, 45, 96, 109	0
All	All	466/478 (97%)	0.34	42 (9%) 9 8	20, 40, 88, 122	0

All (42) RSRZ outliers are listed below:

Mol	Chain	Res	Type	RSRZ
1	B	178	SER	7.4
1	B	201	TYR	6.2
1	B	180	ILE	6.1
1	B	179	GLY	6.1
1	A	181	ALA	6.0
1	B	175	GLY	5.3
1	B	176	TYR	5.3
1	B	171	MET	4.7
1	B	204	SER	4.4
1	B	182	HIS	4.3
1	B	187	SER	4.2
1	B	190	ILE	4.2
1	B	193	LEU	4.0
1	B	174	LEU	3.7
1	B	172	GLN	3.7
1	B	200	VAL	3.7
1	B	177	SER	3.6
1	B	157	GLU	3.4
1	B	160	ASP	3.4
1	B	183	SER	3.3
1	B	181	ALA	3.3
1	B	161	GLY	3.3
1	B	106	LEU	3.2
1	B	169	LEU	3.2

Continued on next page...

Continued from previous page...

Mol	Chain	Res	Type	RSRZ
1	B	159	PRO	3.2
1	A	169	LEU	3.2
1	B	113	PHE	3.1
1	B	168	ASN	3.0
1	B	110	LEU	2.9
1	B	206	PHE	2.7
1	A	203	ASN	2.6
1	B	205	CYS	2.6
1	B	158	THR	2.5
1	A	174	LEU	2.4
1	B	208	VAL	2.4
1	B	207	TYR	2.3
1	B	170	THR	2.2
1	B	186	VAL	2.2
1	A	113	PHE	2.1
1	B	162	ILE	2.1
1	B	105	LEU	2.1
1	B	203	ASN	2.0

6.2 Non-standard residues in protein, DNA, RNA chains [i](#)

There are no non-standard protein/DNA/RNA residues in this entry.

6.3 Carbohydrates [i](#)

There are no carbohydrates in this entry.

6.4 Ligands [i](#)

In the following table, the Atoms column lists the number of modelled atoms in the group and the number defined in the chemical component dictionary. The B-factors column lists the minimum, median, 95th percentile and maximum values of B factors of atoms in the group. The column labelled 'Q< 0.9' lists the number of atoms with occupancy less than 0.9.

Mol	Type	Chain	Res	Atoms	RSCC	RSR	B-factors(Å ²)	Q<0.9
2	IPA	A	304	4/4	0.78	0.20	52,53,56,68	0
2	IPA	A	303	4/4	0.79	0.19	58,59,65,71	0
2	IPA	A	302	4/4	0.91	0.14	36,40,42,45	0
2	IPA	B	301	4/4	0.92	0.18	33,35,39,42	0
2	IPA	A	301	4/4	0.93	0.14	24,31,37,37	0

Continued on next page...

Continued from previous page...

Mol	Type	Chain	Res	Atoms	RSCC	RSR	B-factors(\AA^2)	Q<0.9
3	NA	A	306	1/1	0.95	0.20	46,46,46,46	0
2	IPA	B	303	4/4	0.96	0.22	57,60,67,84	0
2	IPA	B	302	4/4	0.97	0.12	32,35,41,49	0
3	NA	B	304	1/1	0.98	0.06	28,28,28,28	0
3	NA	A	305	1/1	0.99	0.06	23,23,23,23	0

6.5 Other polymers [i](#)

There are no such residues in this entry.