



Full wwPDB X-ray Structure Validation Report ⓘ

May 18, 2020 – 11:32 am BST

PDB ID : 3R0Q
Title : A Uniquely Open Conformation Revealed in the Crystal Structure of Arabidopsis Thaliana Protein Arginine Methyltransferase 10
Authors : Cheng, Y.; Redinbo, M.R.
Deposited on : 2011-03-08
Resolution : 2.61 Å(reported)

This is a Full wwPDB X-ray Structure Validation Report for a publicly released PDB entry.

We welcome your comments at validation@mail.wwpdb.org

A user guide is available at

<https://www.wwpdb.org/validation/2017/XrayValidationReportHelp>

with specific help available everywhere you see the ⓘ symbol.

The following versions of software and data (see [references ⓘ](#)) were used in the production of this report:

MolProbity : 4.02b-467
Mogul : 1.8.5 (274361), CSD as541be (2020)
Xtriage (Phenix) : 1.13
EDS : 2.11
buster-report : 1.1.7 (2018)
Percentile statistics : 20191225.v01 (using entries in the PDB archive December 25th 2019)
Refmac : 5.8.0158
CCP4 : 7.0.044 (Gargrove)
Ideal geometry (proteins) : Engh & Huber (2001)
Ideal geometry (DNA, RNA) : Parkinson et al. (1996)
Validation Pipeline (wwPDB-VP) : 2.11

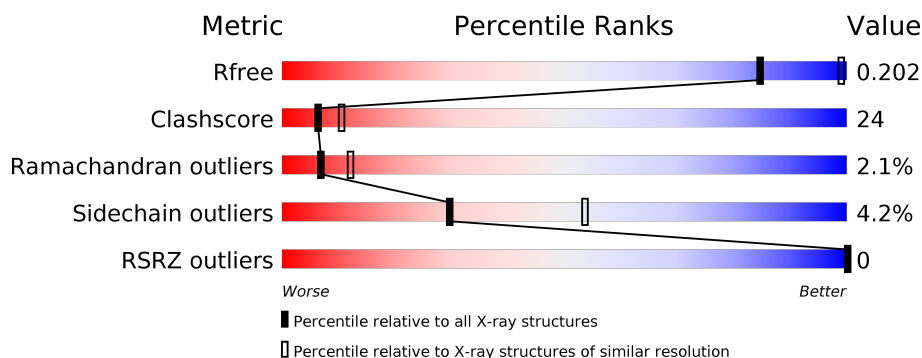
1 Overall quality at a glance

The following experimental techniques were used to determine the structure:

X-RAY DIFFRACTION

The reported resolution of this entry is 2.61 Å.

Percentile scores (ranging between 0-100) for global validation metrics of the entry are shown in the following graphic. The table shows the number of entries on which the scores are based.



Metric	Whole archive (#Entries)	Similar resolution (#Entries, resolution range(Å))
R_{free}	130704	3797 (2.64-2.60)
Clashscore	141614	4168 (2.64-2.60)
Ramachandran outliers	138981	4093 (2.64-2.60)
Sidechain outliers	138945	4093 (2.64-2.60)
RSRZ outliers	127900	3731 (2.64-2.60)

The table below summarises the geometric issues observed across the polymeric chains and their fit to the electron density. The red, orange, yellow and green segments on the lower bar indicate the fraction of residues that contain outliers for ≥ 3 , 2, 1 and 0 types of geometric quality criteria respectively. A grey segment represents the fraction of residues that are not modelled. The numeric value for each fraction is indicated below the corresponding segment, with a dot representing fractions $\leq 5\%$. The upper red bar (where present) indicates the fraction of residues that have poor fit to the electron density. The numeric value is given above the bar.

Mol	Chain	Length	Quality of chain
1	A	376	<div> <div style="width: 57%; background-color: green;"></div> <div style="width: 32%; background-color: yellow;"></div> <div style="width: 7%; background-color: orange;"></div> <div style="width: 4%; background-color: red;"></div> <div style="width: 2%; background-color: grey;"></div> </div> <div>57% 32% • 7%</div>
1	C	376	<div> <div style="width: 55%; background-color: green;"></div> <div style="width: 36%; background-color: yellow;"></div> <div style="width: 7%; background-color: orange;"></div> <div style="width: 2%; background-color: red;"></div> <div style="width: 2%; background-color: grey;"></div> </div> <div>55% 36% • 7%</div>
1	E	376	<div> <div style="width: 55%; background-color: green;"></div> <div style="width: 34%; background-color: yellow;"></div> <div style="width: 7%; background-color: orange;"></div> <div style="width: 2%; background-color: red;"></div> <div style="width: 2%; background-color: grey;"></div> </div> <div>55% 34% • 7%</div>
1	G	376	<div> <div style="width: 59%; background-color: green;"></div> <div style="width: 32%; background-color: yellow;"></div> <div style="width: 6%; background-color: orange;"></div> <div style="width: 3%; background-color: red;"></div> <div style="width: 2%; background-color: grey;"></div> </div> <div>59% 32% • • 6%</div>

2 Entry composition

There are 3 unique types of molecules in this entry. The entry contains 11025 atoms, of which 0 are hydrogens and 0 are deuteriums.

In the tables below, the ZeroOcc column contains the number of atoms modelled with zero occupancy, the AltConf column contains the number of residues with at least one atom in alternate conformation and the Trace column contains the number of residues modelled with at most 2 atoms.

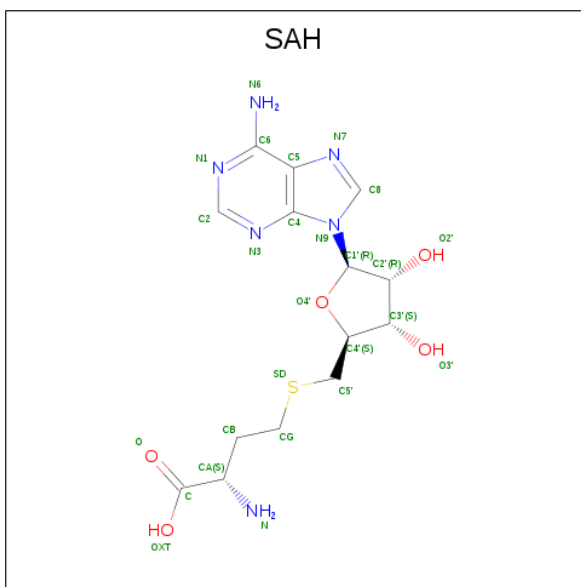
- Molecule 1 is a protein called Probable protein arginine N-methyltransferase 4.2.

Mol	Chain	Residues	Atoms					ZeroOcc	AltConf	Trace
1	C	349	Total	C	N	O	S	0	0	0
			2682	1708	444	513	17			
1	G	353	Total	C	N	O	S	0	0	0
			2688	1718	446	507	17			
1	A	350	Total	C	N	O	S	0	0	0
			2696	1718	447	514	17			
1	E	349	Total	C	N	O	S	0	0	0
			2687	1713	443	514	17			

There are 12 discrepancies between the modelled and reference sequences:

Chain	Residue	Modelled	Actual	Comment	Reference
C	8	SER	-	EXPRESSION TAG	UNP Q9MAT5
C	9	ASN	-	EXPRESSION TAG	UNP Q9MAT5
C	10	ALA	-	EXPRESSION TAG	UNP Q9MAT5
G	8	SER	-	EXPRESSION TAG	UNP Q9MAT5
G	9	ASN	-	EXPRESSION TAG	UNP Q9MAT5
G	10	ALA	-	EXPRESSION TAG	UNP Q9MAT5
A	8	SER	-	EXPRESSION TAG	UNP Q9MAT5
A	9	ASN	-	EXPRESSION TAG	UNP Q9MAT5
A	10	ALA	-	EXPRESSION TAG	UNP Q9MAT5
E	8	SER	-	EXPRESSION TAG	UNP Q9MAT5
E	9	ASN	-	EXPRESSION TAG	UNP Q9MAT5
E	10	ALA	-	EXPRESSION TAG	UNP Q9MAT5

- Molecule 2 is S-ADENOSYL-L-HOMOCYSTEINE (three-letter code: SAH) (formula: C₁₄H₂₀N₆O₅S).



Mol	Chain	Residues	Atoms					ZeroOcc	AltConf
2	C	1	Total	C	N	O	S	0	0
			26	14	6	5	1		
2	G	1	Total	C	N	O	S	0	0
			26	14	6	5	1		
2	A	1	Total	C	N	O	S	0	0
			26	14	6	5	1		
2	E	1	Total	C	N	O	S	0	0
			26	14	6	5	1		

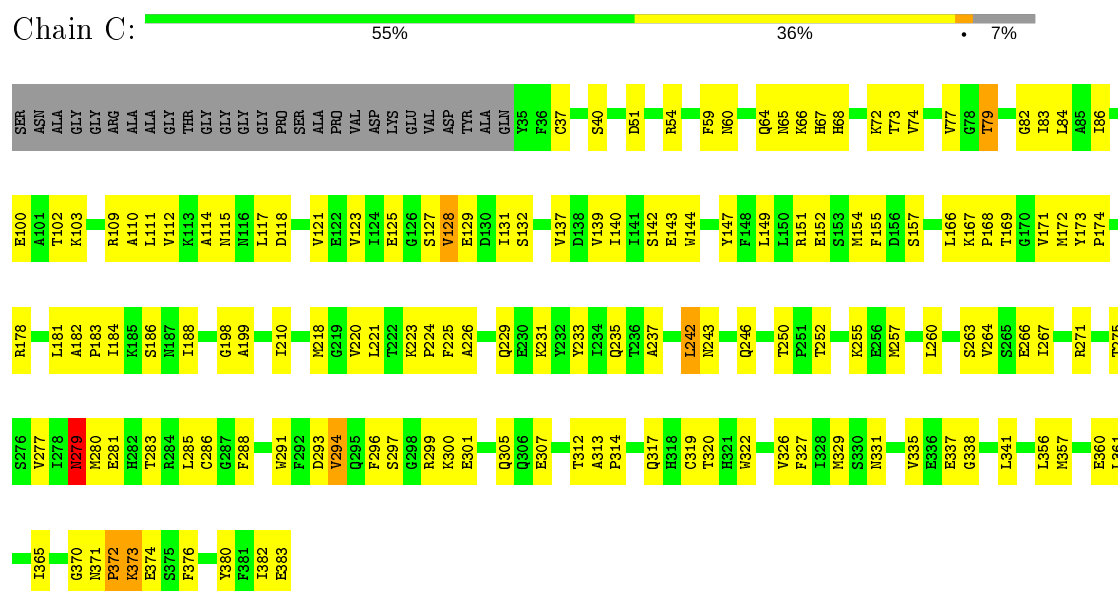
- Molecule 3 is water.

Mol	Chain	Residues	Atoms		ZeroOcc	AltConf
3	C	45	Total	O	0	0
			45	45		
3	G	39	Total	O	0	0
			39	39		
3	A	35	Total	O	0	0
			35	35		
3	E	49	Total	O	0	0
			49	49		

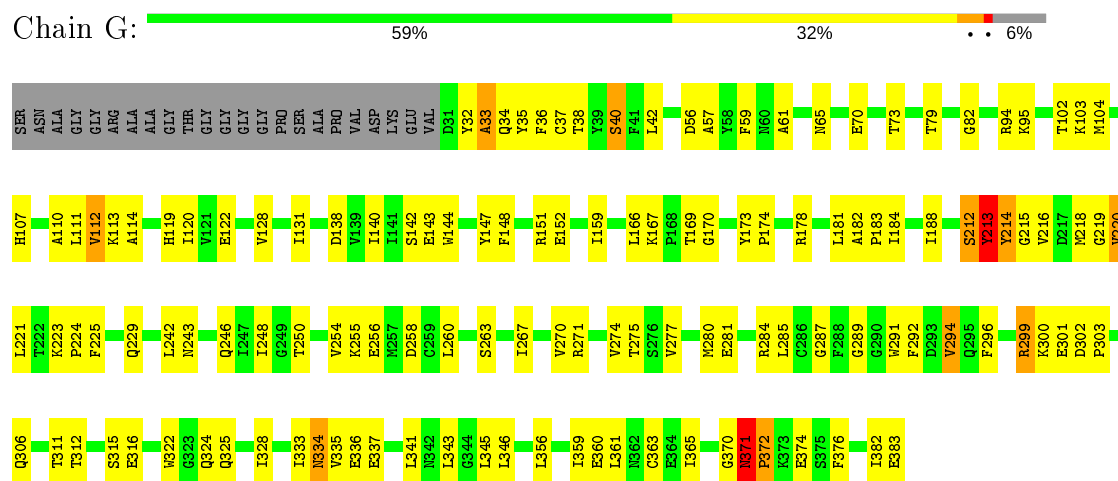
3 Residue-property plots

These plots are drawn for all protein, RNA and DNA chains in the entry. The first graphic for a chain summarises the proportions of the various outlier classes displayed in the second graphic. The second graphic shows the sequence view annotated by issues in geometry and electron density. Residues are color-coded according to the number of geometric quality criteria for which they contain at least one outlier: green = 0, yellow = 1, orange = 2 and red = 3 or more. A red dot above a residue indicates a poor fit to the electron density ($RSRZ > 2$). Stretches of 2 or more consecutive residues without any outlier are shown as a green connector. Residues present in the sample, but not in the model, are shown in grey.

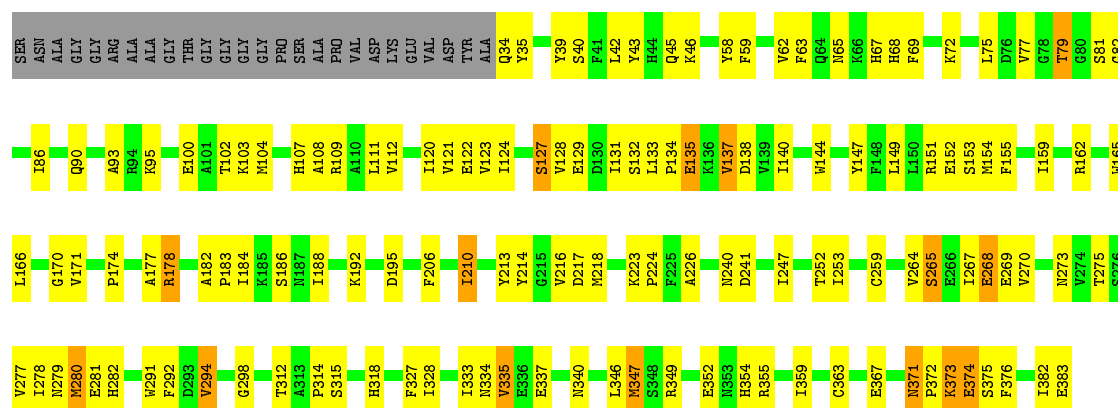
- Molecule 1: Probable protein arginine N-methyltransferase 4.2



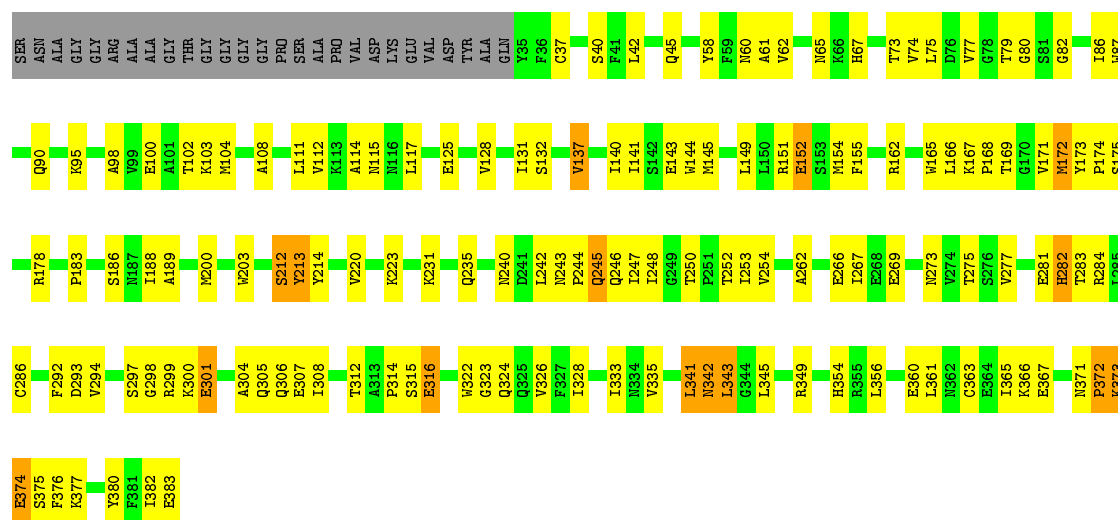
- Molecule 1: Probable protein arginine N-methyltransferase 4.2



- Molecule 1: Probable protein arginine N-methyltransferase 4.2



- Chain E: 55% 34% • 7%



4 Data and refinement statistics

Property	Value	Source
Space group	P 1 21 1	Depositor
Cell constants a, b, c, α , β , γ	80.55Å 86.69Å 114.73Å 90.00° 89.97° 90.00°	Depositor
Resolution (Å)	32.97 – 2.61 32.97 – 2.61	Depositor EDS
% Data completeness (in resolution range)	96.6 (32.97-2.61) 92.2 (32.97-2.61)	Depositor EDS
R_{merge}	(Not available)	Depositor
R_{sym}	0.12	Depositor
$\langle I/\sigma(I) \rangle$ ¹	3.68 (at 2.61Å)	Xtriage
Refinement program	PHENIX (phenix.refine: 1.6.4_486)	Depositor
R, R_{free}	0.182 , 0.224 0.171 , 0.202	Depositor DCC
R_{free} test set	1992 reflections (4.26%)	wwPDB-VP
Wilson B-factor (Å ²)	36.4	Xtriage
Anisotropy	0.350	Xtriage
Bulk solvent k_{sol} (e/Å ³), B_{sol} (Å ²)	0.31 , 29.1	EDS
L-test for twinning ²	$\langle L \rangle = 0.42$, $\langle L^2 \rangle = 0.24$	Xtriage
Estimated twinning fraction	0.457 for h,-k,-l	Xtriage
F_o, F_c correlation	0.94	EDS
Total number of atoms	11025	wwPDB-VP
Average B, all atoms (Å ²)	36.0	wwPDB-VP

Xtriage's analysis on translational NCS is as follows: *The largest off-origin peak in the Patterson function is 4.65% of the height of the origin peak. No significant pseudotranslation is detected.*

¹Intensities estimated from amplitudes.

²Theoretical values of $\langle |L| \rangle$, $\langle L^2 \rangle$ for acentric reflections are 0.5, 0.333 respectively for untwinned datasets, and 0.375, 0.2 for perfectly twinned datasets.

5 Model quality

5.1 Standard geometry

Bond lengths and bond angles in the following residue types are not validated in this section: SAH

The Z score for a bond length (or angle) is the number of standard deviations the observed value is removed from the expected value. A bond length (or angle) with $|Z| > 5$ is considered an outlier worth inspection. RMSZ is the root-mean-square of all Z scores of the bond lengths (or angles).

Mol	Chain	Bond lengths		Bond angles	
		RMSZ	$\# Z > 5$	RMSZ	$\# Z > 5$
1	A	0.44	0/2761	0.56	0/3756
1	C	0.42	0/2745	0.56	0/3734
1	E	0.50	0/2751	0.61	0/3742
1	G	0.45	0/2753	0.62	4/3748 (0.1%)
All	All	0.45	0/11010	0.59	4/14980 (0.0%)

Chiral center outliers are detected by calculating the chiral volume of a chiral center and verifying if the center is modelled as a planar moiety or with the opposite hand. A planarity outlier is detected by checking planarity of atoms in a peptide group, atoms in a mainchain group or atoms of a sidechain that are expected to be planar.

Mol	Chain	#Chirality outliers	#Planarity outliers
1	G	0	3

There are no bond length outliers.

All (4) bond angle outliers are listed below:

Mol	Chain	Res	Type	Atoms	Z	Observed(°)	Ideal(°)
1	G	212	SER	O-C-N	-8.61	108.92	122.70
1	G	212	SER	C-N-CA	5.54	135.56	121.70
1	G	213	TYR	CA-C-N	-5.48	105.13	117.20
1	G	371	ASN	C-N-CD	-5.13	109.31	120.60

There are no chirality outliers.

All (3) planarity outliers are listed below:

Mol	Chain	Res	Type	Group
1	G	212	SER	Mainchain
1	G	213	TYR	Mainchain,Peptide

5.2 Too-close contacts ⓘ

In the following table, the Non-H and H(model) columns list the number of non-hydrogen atoms and hydrogen atoms in the chain respectively. The H(added) column lists the number of hydrogen atoms added and optimized by MolProbity. The Clashes column lists the number of clashes within the asymmetric unit, whereas Symm-Clashes lists symmetry related clashes.

Mol	Chain	Non-H	H(model)	H(added)	Clashes	Symm-Clashes
1	A	2696	0	2492	122	1
1	C	2682	0	2484	125	1
1	E	2687	0	2485	143	0
1	G	2688	0	2470	127	0
2	A	26	0	19	3	0
2	C	26	0	19	1	0
2	E	26	0	19	2	0
2	G	26	0	19	0	0
3	A	35	0	0	3	0
3	C	45	0	0	8	0
3	E	49	0	0	6	0
3	G	39	0	0	2	0
All	All	11025	0	10007	503	1

The all-atom clashscore is defined as the number of clashes found per 1000 atoms (including hydrogen atoms). The all-atom clashscore for this structure is 24.

All (503) close contacts within the same asymmetric unit are listed below, sorted by their clash magnitude.

Atom-1	Atom-2	Interatomic distance (Å)	Clash overlap (Å)
1:G:333:ILE:HD11	1:G:365:ILE:CD1	1.68	1.22
1:G:333:ILE:HD11	1:G:365:ILE:HD13	1.29	1.15
1:C:40:SER:HB3	1:C:102:THR:HG21	1.26	1.13
1:G:370:GLY:HA2	1:G:371:ASN:CB	1.78	1.12
1:E:356:LEU:HD23	3:E:413:HOH:O	1.52	1.10
1:G:333:ILE:CD1	1:G:365:ILE:CD1	2.38	1.01
1:A:247:ILE:HD11	1:A:314:PRO:HG2	1.42	1.00
1:E:343:LEU:HD21	1:E:363:CYS:SG	2.01	0.99
1:G:277:VAL:HG21	1:G:335:VAL:CG2	1.94	0.98
1:C:40:SER:HB3	1:C:102:THR:CG2	1.93	0.97
1:G:277:VAL:HG21	1:G:335:VAL:HG21	1.45	0.96
1:E:102:THR:HG22	1:E:103:LYS:H	1.31	0.96
1:C:255:LYS:HD3	1:C:271:ARG:HH21	1.31	0.95
1:A:267:ILE:HG21	1:A:349:ARG:HH21	1.30	0.94
1:C:365:ILE:O	1:C:373:LYS:HA	1.68	0.94

Continued on next page...

Continued from previous page...

Atom-1	Atom-2	Interatomic distance (Å)	Clash overlap (Å)
1:E:240:ASN:HD22	1:E:326:VAL:HG21	1.35	0.92
1:E:277:VAL:HG21	1:E:335:VAL:HG11	1.48	0.92
1:A:68:HIS:O	1:A:72:LYS:HG3	1.71	0.90
1:C:280:MET:N	1:C:281:GLU:HA	1.87	0.88
1:G:333:ILE:CD1	1:G:365:ILE:HD12	2.03	0.88
1:C:231:LYS:HA	1:C:235:GLN:HB2	1.56	0.87
1:C:279:ASN:C	1:C:281:GLU:HA	1.98	0.84
1:E:178:ARG:HD2	1:E:253:ILE:HD13	1.60	0.84
1:E:102:THR:HG22	1:E:103:LYS:N	1.92	0.84
1:C:199:ALA:HB1	1:C:229:GLN:HE22	1.42	0.84
1:G:370:GLY:CA	1:G:371:ASN:CB	2.55	0.82
1:E:40:SER:HB3	1:E:102:THR:HG21	1.60	0.82
1:E:343:LEU:CD2	1:E:363:CYS:SG	2.68	0.82
1:G:181:LEU:HD22	1:G:345:LEU:HD21	1.60	0.82
1:A:174:PRO:HB3	1:A:294:VAL:HG13	1.62	0.81
1:G:140:ILE:HG13	1:G:166:LEU:HD13	1.60	0.81
1:G:184:ILE:HG12	1:G:287:GLY:O	1.79	0.81
1:C:199:ALA:HB1	1:C:229:GLN:NE2	1.96	0.81
1:C:169:THR:HG23	3:C:412:HOH:O	1.79	0.80
1:C:40:SER:CB	1:C:102:THR:HG21	2.11	0.80
1:C:263:SER:HB2	3:C:424:HOH:O	1.81	0.80
1:G:301:GLU:O	1:G:303:PRO:HD3	1.82	0.79
1:A:280:MET:CB	1:A:337:GLU:HA	2.13	0.79
1:E:188:ILE:HG23	1:E:328:ILE:HD11	1.65	0.79
1:E:247:ILE:HD11	1:E:314:PRO:HG2	1.65	0.79
1:C:255:LYS:HD3	1:C:271:ARG:NH2	1.97	0.79
1:E:356:LEU:HD22	1:E:383:GLU:HB2	1.65	0.79
1:E:79:THR:HG22	1:E:100:GLU:HB2	1.66	0.77
1:E:315:SER:O	1:E:316:GLU:HB2	1.82	0.77
1:E:373:LYS:O	1:E:374:GLU:HB2	1.83	0.77
1:G:284:ARG:HB2	1:G:333:ILE:O	1.84	0.76
1:C:220:VAL:HG22	3:C:399:HOH:O	1.84	0.76
1:C:243:ASN:HB3	1:C:246:GLN:HG3	1.67	0.76
1:A:77:VAL:HG13	1:A:128:VAL:HG21	1.68	0.76
1:G:250:THR:O	1:G:275:THR:HG23	1.84	0.76
1:E:242:LEU:HB2	1:E:324:GLN:OE1	1.86	0.75
1:C:229:GLN:HG2	3:C:417:HOH:O	1.87	0.74
1:G:102:THR:HG22	1:G:103:LYS:H	1.53	0.74
1:G:281:GLU:HA	1:G:336:GLU:HA	1.69	0.73
1:A:140:ILE:HG13	1:A:166:LEU:HD13	1.70	0.72
1:C:299:ARG:C	1:C:301:GLU:H	1.92	0.72

Continued on next page...

Continued from previous page...

Atom-1	Atom-2	Interatomic distance (Å)	Clash overlap (Å)
1:E:250:THR:O	1:E:275:THR:HG23	1.88	0.72
1:A:151:ARG:CZ	1:A:383:GLU:OE1	2.37	0.72
1:C:74:VAL:HG13	1:C:139:VAL:HB	1.70	0.72
1:A:46:LYS:HD3	3:A:403:HOH:O	1.89	0.72
1:C:140:ILE:HG13	1:C:166:LEU:HD13	1.72	0.71
1:G:333:ILE:HD13	1:G:365:ILE:HD12	1.71	0.71
1:E:231:LYS:HA	1:E:235:GLN:HB2	1.72	0.71
1:A:267:ILE:HG21	1:A:349:ARG:NH2	2.05	0.70
1:E:275:THR:O	1:E:341:LEU:HD12	1.90	0.70
1:G:333:ILE:CD1	1:G:365:ILE:HD13	2.11	0.70
1:C:252:THR:HG23	1:C:275:THR:HG22	1.72	0.70
1:C:178:ARG:HB3	1:C:293:ASP:HB2	1.74	0.69
1:E:102:THR:CG2	1:E:103:LYS:H	2.04	0.69
1:G:277:VAL:HG21	1:G:335:VAL:HG22	1.74	0.69
1:G:215:GLY:C	3:G:407:HOH:O	2.31	0.68
1:G:299:ARG:HG3	1:G:301:GLU:H	1.56	0.68
1:C:223:LYS:HG2	1:G:306:GLN:OE1	1.94	0.67
1:G:334:ASN:H	1:G:334:ASN:HD22	1.42	0.67
1:G:371:ASN:N	1:G:372:PRO:HD3	2.10	0.66
1:C:67:HIS:CE1	1:C:305:GLN:HG3	2.30	0.66
1:G:174:PRO:HB3	1:G:294:VAL:HG13	1.76	0.66
1:G:151:ARG:HH12	1:G:383:GLU:CD	1.98	0.66
1:A:327:PHE:CE2	1:A:359:ILE:HD12	2.30	0.66
1:A:188:ILE:HG23	1:A:328:ILE:HD11	1.76	0.66
1:A:86:ILE:O	1:A:90:GLN:HG3	1.95	0.66
1:C:223:LYS:HB3	1:C:224:PRO:HD3	1.77	0.66
1:C:279:ASN:O	1:C:337:GLU:HB2	1.96	0.66
1:E:267:ILE:HG12	3:E:401:HOH:O	1.96	0.66
1:A:223:LYS:HB3	1:A:224:PRO:HD3	1.78	0.65
1:A:280:MET:O	1:A:337:GLU:N	2.28	0.65
1:C:109:ARG:HD2	3:C:385:HOH:O	1.96	0.65
1:E:128:VAL:HG23	2:E:1:SAH:N1	2.12	0.65
1:C:181:LEU:HD21	1:C:288:PHE:HB3	1.78	0.65
1:A:279:ASN:O	1:A:281:GLU:N	2.26	0.65
1:C:102:THR:HG22	1:C:103:LYS:H	1.62	0.65
1:G:371:ASN:H	1:G:372:PRO:HD3	1.61	0.65
1:E:151:ARG:O	1:E:152:GLU:HB2	1.97	0.64
1:A:281:GLU:O	1:A:282:HIS:CG	2.50	0.64
1:G:114:ALA:HB2	1:E:220:VAL:HG11	1.78	0.64
1:A:213:TYR:O	1:A:214:TYR:CB	2.46	0.64
1:E:244:PRO:HD2	1:E:316:GLU:HG3	1.80	0.64

Continued on next page...

Continued from previous page...

Atom-1	Atom-2	Interatomic distance (Å)	Clash overlap (Å)
1:G:169:THR:HG22	1:G:169:THR:O	1.97	0.64
1:G:242:LEU:HB2	1:G:324:GLN:OE1	1.98	0.64
1:C:242:LEU:HD21	1:C:326:VAL:CG2	2.28	0.63
1:G:221:LEU:HD11	1:E:111:LEU:HD13	1.80	0.63
1:G:151:ARG:O	1:G:152:GLU:HB2	1.98	0.63
1:A:102:THR:HG22	1:A:104:MET:H	1.63	0.63
1:A:281:GLU:O	1:A:282:HIS:CD2	2.52	0.63
1:E:67:HIS:CE1	1:E:305:GLN:HG3	2.34	0.63
1:A:315:SER:HB2	1:A:318:HIS:H	1.64	0.63
1:G:281:GLU:H	1:G:337:GLU:H	1.44	0.63
1:C:181:LEU:CD2	1:C:288:PHE:HB3	2.29	0.63
1:E:188:ILE:HG23	1:E:328:ILE:CD1	2.29	0.62
1:A:349:ARG:HD3	1:A:354:HIS:O	1.99	0.62
1:E:342:ASN:OD1	1:E:342:ASN:N	2.30	0.62
1:E:174:PRO:HB3	1:E:294:VAL:HG13	1.80	0.62
1:E:213:TYR:O	1:E:214:TYR:CB	2.48	0.62
1:A:213:TYR:O	1:A:214:TYR:HB2	2.00	0.61
1:C:331:ASN:HB2	1:G:70:GLU:HG2	1.82	0.61
1:G:181:LEU:CD2	1:G:345:LEU:HD21	2.28	0.61
1:E:315:SER:O	1:E:316:GLU:CB	2.47	0.61
1:A:132:SER:HA	1:A:165:TRP:CZ2	2.36	0.61
1:A:132:SER:HA	1:A:165:TRP:HZ2	1.65	0.61
1:C:102:THR:HG22	1:C:103:LYS:N	2.15	0.61
1:E:343:LEU:HD13	1:E:361:LEU:HD11	1.83	0.61
1:G:356:LEU:HD22	1:G:383:GLU:HB2	1.81	0.61
1:C:260:LEU:HD21	1:C:299:ARG:HH22	1.65	0.61
1:E:183:PRO:CD	1:E:275:THR:HG21	2.31	0.60
1:G:280:MET:HA	1:G:337:GLU:CB	2.31	0.60
1:G:79:THR:OG1	1:G:82:GLY:HA2	2.01	0.60
1:G:215:GLY:O	1:G:216:VAL:HG23	2.01	0.60
1:A:373:LYS:O	1:A:374:GLU:HB2	2.01	0.60
1:C:280:MET:N	1:C:281:GLU:CA	2.62	0.60
1:C:266:GLU:O	1:C:266:GLU:HG2	2.02	0.60
1:C:297:SER:HA	1:C:307:GLU:HG2	1.84	0.60
1:G:183:PRO:HG2	1:G:275:THR:HG21	1.84	0.60
1:E:151:ARG:HD2	1:E:383:GLU:OE1	2.02	0.60
1:G:73:THR:OG1	1:G:94:ARG:NH1	2.35	0.60
1:A:269:GLU:O	1:A:347:MET:N	2.35	0.60
1:A:277:VAL:HG11	1:A:335:VAL:CG1	2.32	0.59
1:E:213:TYR:CD1	1:E:213:TYR:N	2.69	0.59
1:E:40:SER:HB3	1:E:102:THR:CG2	2.30	0.59

Continued on next page...

Continued from previous page...

Atom-1	Atom-2	Interatomic distance (Å)	Clash overlap (Å)
1:G:143:GLU:OE2	1:G:322:TRP:HZ2	1.85	0.59
1:G:151:ARG:NH1	1:G:383:GLU:OE1	2.34	0.59
1:E:186:SER:OG	1:E:188:ILE:HG22	2.03	0.59
1:G:334:ASN:N	1:G:334:ASN:ND2	2.51	0.59
1:G:243:ASN:HB3	1:G:246:GLN:HG3	1.84	0.59
1:G:214:TYR:O	1:G:215:GLY:C	2.39	0.59
1:E:143:GLU:OE2	1:E:322:TRP:HZ2	1.86	0.59
1:E:145:MET:CE	1:E:294:VAL:HG21	2.33	0.59
1:E:58:TYR:O	1:E:62:VAL:HG23	2.03	0.59
1:G:102:THR:HG22	1:G:103:LYS:N	2.17	0.58
1:C:291:TRP:HB2	1:C:312:THR:OG1	2.03	0.58
1:E:375:SER:O	1:E:376:PHE:HB3	2.04	0.58
1:G:223:LYS:HB3	1:G:224:PRO:HD3	1.85	0.58
1:E:367:GLU:CB	1:E:372:PRO:HD3	2.33	0.58
1:A:102:THR:HG22	1:A:103:LYS:N	2.19	0.58
1:A:264:VAL:O	1:A:267:ILE:HB	2.03	0.58
1:G:361:LEU:HD23	1:G:376:PHE:HE1	1.69	0.58
1:A:34:GLN:CG	1:A:35:TYR:N	2.66	0.57
1:G:151:ARG:HD2	1:G:382:ILE:HG22	1.85	0.57
1:E:213:TYR:O	1:E:214:TYR:HB2	2.05	0.57
1:C:223:LYS:O	1:C:226:ALA:HB3	2.05	0.57
1:E:171:VAL:HG12	1:E:172:MET:H	1.70	0.57
1:A:373:LYS:O	1:A:374:GLU:CB	2.53	0.57
1:A:122:GLU:HG2	3:A:395:HOH:O	2.04	0.57
1:C:299:ARG:O	1:C:301:GLU:N	2.37	0.57
1:A:178:ARG:HD3	1:A:253:ILE:HD13	1.85	0.56
1:C:266:GLU:O	1:C:266:GLU:CG	2.53	0.56
1:E:372:PRO:O	1:E:373:LYS:CB	2.52	0.56
1:E:80:GLY:O	1:E:108:ALA:HB2	2.05	0.56
1:G:334:ASN:H	1:G:334:ASN:ND2	2.01	0.56
1:G:40:SER:OG	1:G:102:THR:HG21	2.04	0.56
1:G:223:LYS:HB3	1:G:224:PRO:CD	2.34	0.56
1:E:189:ALA:HB2	1:E:286:CYS:HB3	1.86	0.56
1:E:174:PRO:CB	1:E:294:VAL:HG13	2.36	0.56
1:G:128:VAL:HA	1:G:131:ILE:HG12	1.88	0.56
1:G:32:TYR:O	1:G:33:ALA:C	2.43	0.56
1:C:77:VAL:HB	1:C:142:SER:HB2	1.86	0.56
1:E:235:GLN:O	1:E:380:TYR:HA	2.06	0.56
1:G:59:PHE:CE1	1:E:214:TYR:HA	2.41	0.56
1:E:281:GLU:O	1:E:282:HIS:CB	2.54	0.55
1:C:356:LEU:HD22	1:C:383:GLU:HB2	1.87	0.55

Continued on next page...

Continued from previous page...

Atom-1	Atom-2	Interatomic distance (Å)	Clash overlap (Å)
1:E:299:ARG:HG2	1:E:300:LYS:H	1.71	0.55
1:C:183:PRO:HB3	1:C:285:LEU:HD11	1.89	0.55
1:A:267:ILE:HG22	1:A:268:GLU:OE1	2.07	0.55
1:C:299:ARG:C	1:C:301:GLU:N	2.60	0.55
1:G:42:LEU:HD11	1:G:107:HIS:CD2	2.42	0.55
1:A:277:VAL:HG12	1:A:280:MET:CB	2.37	0.54
1:E:143:GLU:OE2	1:E:322:TRP:CZ2	2.59	0.54
1:C:151:ARG:O	1:C:152:GLU:HB2	2.07	0.54
1:A:155:PHE:O	1:A:159:ILE:HG13	2.07	0.54
1:E:367:GLU:HB2	1:E:372:PRO:CD	2.37	0.54
1:E:140:ILE:HG13	1:E:166:LEU:HD13	1.88	0.54
1:E:162:ARG:HG3	1:E:166:LEU:HD22	1.88	0.54
1:E:171:VAL:HG12	1:E:172:MET:N	2.23	0.54
1:A:174:PRO:CB	1:A:294:VAL:HG13	2.36	0.54
1:G:32:TYR:O	1:G:36:PHE:N	2.38	0.54
1:C:151:ARG:HD2	1:C:382:ILE:HG22	1.90	0.54
1:C:341:LEU:HD23	1:C:365:ILE:HG23	1.90	0.54
1:A:100:GLU:OE2	1:A:102:THR:HB	2.07	0.54
1:C:250:THR:O	1:C:275:THR:HB	2.07	0.54
1:E:382:ILE:O	1:E:383:GLU:HB2	2.08	0.54
1:E:178:ARG:HB3	1:E:293:ASP:HB2	1.90	0.54
1:C:111:LEU:O	1:C:115:ASN:ND2	2.30	0.53
1:E:306:GLN:HG2	1:E:308:ILE:HD11	1.90	0.53
1:E:188:ILE:CG2	1:E:328:ILE:HD11	2.37	0.53
1:G:167:LYS:C	1:G:169:THR:H	2.11	0.53
1:E:250:THR:O	1:E:275:THR:CG2	2.57	0.53
1:C:186:SER:OG	1:C:188:ILE:HG22	2.08	0.53
1:A:210:ILE:HG22	1:A:216:VAL:O	2.08	0.53
1:C:144:TRP:CH2	1:C:149:LEU:HD11	2.44	0.53
1:C:341:LEU:CD2	1:C:365:ILE:HG12	2.38	0.53
1:A:138:ASP:O	1:A:170:GLY:HA2	2.09	0.53
1:C:79:THR:HG22	1:C:100:GLU:HB2	1.91	0.52
1:A:186:SER:OG	1:A:188:ILE:HG22	2.09	0.52
1:E:188:ILE:HD13	1:E:328:ILE:HD11	1.90	0.52
1:A:112:VAL:HG21	1:A:121:VAL:HG11	1.92	0.52
1:C:243:ASN:CB	1:C:246:GLN:HG3	2.38	0.52
1:E:73:THR:HG22	1:E:137:VAL:HG22	1.92	0.52
1:G:151:ARG:NH1	1:G:383:GLU:CD	2.63	0.52
1:A:127:SER:C	1:A:129:GLU:H	2.13	0.52
1:G:254:VAL:O	1:G:271:ARG:HG2	2.09	0.52
1:A:45:GLN:HG3	1:A:104:MET:SD	2.50	0.52

Continued on next page...

Continued from previous page...

Atom-1	Atom-2	Interatomic distance (Å)	Clash overlap (Å)
1:C:181:LEU:HD23	1:C:182:ALA:H	1.74	0.52
1:E:141:ILE:HG13	1:E:173:TYR:HB3	1.90	0.52
1:C:314:PRO:HA	3:C:384:HOH:O	2.10	0.52
1:G:215:GLY:O	1:G:216:VAL:CG2	2.58	0.52
1:C:79:THR:OG1	1:C:82:GLY:HA2	2.09	0.52
1:E:189:ALA:HA	1:E:328:ILE:HD12	1.92	0.52
1:G:159:ILE:HD13	1:G:263:SER:HA	1.90	0.52
1:G:112:VAL:O	1:G:113:LYS:C	2.49	0.52
1:E:108:ALA:O	1:E:112:VAL:HG23	2.10	0.51
1:G:173:TYR:CD1	1:G:296:PHE:HD2	2.28	0.51
1:G:34:GLN:CG	1:G:35:TYR:N	2.73	0.51
1:A:65:ASN:O	1:A:67:HIS:N	2.43	0.51
1:C:235:GLN:O	1:C:380:TYR:HA	2.09	0.51
1:A:144:TRP:CH2	1:A:149:LEU:HD11	2.46	0.51
1:G:292:PHE:HZ	1:G:322:TRP:CD2	2.28	0.51
1:A:75:LEU:HB2	1:A:137:VAL:HG21	1.92	0.51
1:G:221:LEU:CD1	1:E:111:LEU:HD13	2.40	0.51
1:C:225:PHE:O	1:C:229:GLN:HG3	2.11	0.51
1:E:65:ASN:OD1	1:E:305:GLN:N	2.43	0.51
1:G:147:TYR:HB2	1:G:151:ARG:HD3	1.93	0.51
1:E:213:TYR:O	1:E:214:TYR:CG	2.64	0.51
1:E:183:PRO:HB2	1:E:248:ILE:CG1	2.41	0.51
1:G:114:ALA:CB	1:E:220:VAL:HG11	2.41	0.51
1:G:299:ARG:HG3	1:G:301:GLU:N	2.25	0.51
1:C:373:LYS:O	1:C:374:GLU:HG2	2.10	0.51
1:E:115:ASN:O	1:E:117:LEU:HG	2.11	0.51
1:E:143:GLU:O	1:E:143:GLU:OE1	2.28	0.51
1:E:167:LYS:HB2	1:E:168:PRO:HD2	1.93	0.51
1:E:149:LEU:HD13	1:E:292:PHE:CD1	2.47	0.50
1:C:51:ASP:HB3	1:C:54:ARG:HB3	1.94	0.50
1:E:200:MET:O	1:E:203:TRP:HB3	2.09	0.50
1:E:67:HIS:ND1	1:E:305:GLN:HG3	2.25	0.50
1:G:178:ARG:HG3	1:G:256:GLU:HG3	1.93	0.50
1:E:131:ILE:CG2	1:E:132:SER:N	2.74	0.50
1:G:183:PRO:CG	1:G:275:THR:HG21	2.41	0.50
1:G:225:PHE:O	1:G:229:GLN:HG2	2.12	0.50
1:A:79:THR:OG1	1:A:82:GLY:HA2	2.11	0.50
1:C:118:ASP:OD2	1:C:118:ASP:N	2.45	0.50
1:C:174:PRO:HB3	1:C:294:VAL:HG13	1.94	0.50
1:A:192:LYS:O	1:A:195:ASP:HB2	2.11	0.50
1:E:284:ARG:HA	1:E:333:ILE:O	2.12	0.50

Continued on next page...

Continued from previous page...

Atom-1	Atom-2	Interatomic distance (Å)	Clash overlap (Å)
1:A:151:ARG:HD2	1:A:382:ILE:HG22	1.94	0.50
1:E:213:TYR:O	1:E:214:TYR:CD2	2.64	0.50
1:E:367:GLU:H	1:E:372:PRO:HD2	1.76	0.50
1:G:220:VAL:HG21	1:E:114:ALA:HB3	1.94	0.50
1:C:37:CYS:O	1:C:40:SER:OG	2.30	0.49
1:C:299:ARG:HG2	1:C:301:GLU:HB3	1.93	0.49
1:E:277:VAL:HG11	1:E:335:VAL:CG1	2.42	0.49
1:G:102:THR:C	1:G:104:MET:H	2.13	0.49
1:C:59:PHE:CE1	1:A:214:TYR:HA	2.47	0.49
1:G:274:VAL:HA	1:G:341:LEU:O	2.13	0.49
1:G:188:ILE:HG23	1:G:328:ILE:HD11	1.94	0.49
1:G:341:LEU:HD22	1:G:365:ILE:HG12	1.94	0.49
1:E:40:SER:CB	1:E:102:THR:HG21	2.38	0.49
1:G:302:ASP:OD1	3:G:411:HOH:O	2.19	0.49
1:A:69:PHE:O	1:A:93:ALA:HA	2.13	0.49
1:E:366:LYS:HB3	1:E:371:ASN:O	2.12	0.49
1:E:367:GLU:HB2	1:E:372:PRO:HD3	1.93	0.49
1:A:128:VAL:HG23	2:A:1:SAH:N1	2.28	0.49
1:E:154:MET:O	1:E:154:MET:HG2	2.12	0.49
1:A:277:VAL:HG21	1:A:335:VAL:HG11	1.94	0.49
1:A:315:SER:CB	1:A:318:HIS:O	2.61	0.48
1:A:34:GLN:CG	1:A:35:TYR:H	2.26	0.48
1:G:301:GLU:C	1:G:303:PRO:HD3	2.31	0.48
1:A:43:TYR:O	1:A:46:LYS:HB3	2.14	0.48
1:C:147:TYR:HB2	1:C:151:ARG:HD3	1.95	0.48
1:E:183:PRO:HD3	1:E:275:THR:HG21	1.95	0.48
1:A:188:ILE:HG23	1:A:328:ILE:CD1	2.43	0.48
1:G:151:ARG:O	1:G:152:GLU:CB	2.60	0.48
1:G:42:LEU:HD11	1:G:107:HIS:NE2	2.28	0.48
1:C:229:GLN:OE1	1:C:233:TYR:HE2	1.96	0.48
1:G:270:VAL:HG22	1:G:346:LEU:HD12	1.96	0.48
1:G:34:GLN:CG	1:G:35:TYR:H	2.27	0.48
1:C:286:CYS:O	1:C:329:MET:HB2	2.14	0.48
1:G:299:ARG:HG3	1:G:300:LYS:N	2.29	0.48
1:G:33:ALA:O	1:G:37:CYS:N	2.39	0.48
1:E:297:SER:OG	1:E:307:GLU:OE1	2.28	0.48
1:G:214:TYR:HB3	1:E:87:TRP:HZ2	1.79	0.48
1:G:291:TRP:HB2	1:G:312:THR:OG1	2.14	0.48
1:E:361:LEU:O	1:E:377:LYS:HA	2.14	0.48
1:A:104:MET:HE3	1:A:107:HIS:HB2	1.95	0.47
1:A:109:ARG:NH2	1:A:123:VAL:O	2.47	0.47

Continued on next page...

Continued from previous page...

Atom-1	Atom-2	Interatomic distance (Å)	Clash overlap (Å)
1:C:279:ASN:OD1	1:C:283:THR:HG21	2.14	0.47
1:C:337:GLU:HG3	1:C:338:GLY:N	2.28	0.47
1:C:103:LYS:HD3	1:C:125:GLU:OE2	2.14	0.47
1:C:242:LEU:HD21	1:C:326:VAL:HG22	1.96	0.47
1:A:151:ARG:C	1:A:153:SER:H	2.18	0.47
1:E:252:THR:HB	1:E:273:ASN:OD1	2.14	0.47
1:C:109:ARG:NH2	1:C:123:VAL:O	2.47	0.47
1:C:112:VAL:HG11	1:C:121:VAL:HB	1.96	0.47
1:E:277:VAL:HG21	1:E:335:VAL:CG1	2.34	0.47
1:E:299:ARG:HE	1:E:301:GLU:CD	2.17	0.47
1:E:42:LEU:HD12	1:E:42:LEU:H	1.79	0.47
1:G:183:PRO:HB2	1:G:248:ILE:HG13	1.96	0.47
1:E:367:GLU:H	1:E:372:PRO:CD	2.28	0.47
1:G:32:TYR:HB2	1:G:36:PHE:HD1	1.80	0.47
1:A:252:THR:HB	1:A:273:ASN:ND2	2.30	0.47
1:A:327:PHE:HE2	1:A:359:ILE:HD12	1.76	0.47
1:C:221:LEU:HD13	1:A:42:LEU:HD21	1.96	0.47
1:E:74:VAL:HG12	1:E:75:LEU:N	2.30	0.47
1:A:206:PHE:CZ	1:A:210:ILE:CD1	2.98	0.47
1:A:367:GLU:HB2	1:A:371:ASN:O	2.15	0.47
1:E:162:ARG:HG3	1:E:166:LEU:CD2	2.45	0.47
1:E:213:TYR:C	1:E:214:TYR:CG	2.88	0.47
1:A:102:THR:CG2	1:A:103:LYS:N	2.77	0.46
1:C:198:GLY:O	1:C:199:ALA:C	2.54	0.46
1:C:60:ASN:O	1:C:64:GLN:HB2	2.15	0.46
1:C:72:LYS:HD3	3:C:410:HOH:O	2.16	0.46
1:A:270:VAL:HG22	1:A:346:LEU:HG	1.97	0.46
1:A:40:SER:HB3	1:A:102:THR:CG2	2.46	0.46
1:A:183:PRO:HG2	1:A:275:THR:HG21	1.98	0.46
1:E:145:MET:HE2	1:E:294:VAL:HG21	1.97	0.46
1:G:183:PRO:HB3	1:G:285:LEU:HD13	1.96	0.46
1:C:143:GLU:OE2	1:C:322:TRP:CZ2	2.68	0.46
1:E:137:VAL:N	1:E:165:TRP:O	2.48	0.46
1:E:175:SER:HB2	3:E:406:HOH:O	2.15	0.46
1:A:124:ILE:HG21	1:A:131:ILE:HD13	1.98	0.46
1:G:280:MET:O	1:G:281:GLU:C	2.54	0.46
1:C:341:LEU:HD23	1:C:365:ILE:HG12	1.98	0.46
1:C:365:ILE:HD12	1:C:374:GLU:HB2	1.96	0.46
1:E:171:VAL:HG11	1:E:298:GLY:HA2	1.97	0.46
1:E:86:ILE:O	1:E:90:GLN:HG3	2.15	0.46
1:A:40:SER:CA	1:A:102:THR:HG21	2.46	0.46

Continued on next page...

Continued from previous page...

Atom-1	Atom-2	Interatomic distance (Å)	Clash overlap (Å)
1:A:213:TYR:O	1:A:214:TYR:CG	2.69	0.45
1:C:199:ALA:HB1	1:C:229:GLN:CD	2.35	0.45
1:C:260:LEU:O	1:C:260:LEU:HD23	2.15	0.45
1:A:177:ALA:O	1:A:178:ARG:HB2	2.17	0.45
1:E:141:ILE:HG13	1:E:173:TYR:CB	2.46	0.45
1:C:337:GLU:HG2	3:C:426:HOH:O	2.16	0.45
1:E:254:VAL:HG11	1:E:345:LEU:CD2	2.45	0.45
1:C:221:LEU:HD22	1:A:107:HIS:HB3	1.99	0.45
1:A:291:TRP:HB2	1:A:312:THR:OG1	2.16	0.45
1:A:162:ARG:NH1	1:A:259:CYS:O	2.50	0.45
1:G:289:GLY:HA2	1:G:325:GLN:O	2.16	0.45
1:G:33:ALA:O	1:G:34:GLN:C	2.54	0.45
1:A:223:LYS:O	1:A:226:ALA:HB3	2.17	0.45
1:C:68:HIS:ND1	1:C:173:TYR:OH	2.44	0.45
1:E:144:TRP:CE3	1:E:155:PHE:HB2	2.52	0.45
1:E:60:ASN:O	1:E:61:ALA:C	2.53	0.45
1:E:365:ILE:O	1:E:373:LYS:HA	2.16	0.45
1:A:39:TYR:CG	2:A:1:SAH:H3'	2.52	0.45
1:C:237:ALA:HB2	1:C:327:PHE:CE2	2.51	0.45
1:E:212:SER:HB3	1:E:213:TYR:CD1	2.52	0.45
1:E:245:GLN:OE1	1:E:245:GLN:HA	2.16	0.45
1:E:349:ARG:HD3	3:E:388:HOH:O	2.17	0.45
1:A:133:LEU:HA	1:A:134:PRO:HD3	1.87	0.44
1:A:154:MET:HG2	1:A:154:MET:O	2.16	0.44
1:C:86:ILE:HG23	1:C:117:LEU:HD11	1.98	0.44
1:C:147:TYR:O	1:C:151:ARG:HB2	2.17	0.44
1:C:173:TYR:CD1	1:C:296:PHE:HD2	2.35	0.44
1:E:100:GLU:HG2	1:E:104:MET:HB3	1.99	0.44
1:E:373:LYS:O	1:E:374:GLU:CB	2.60	0.44
1:A:58:TYR:O	1:A:62:VAL:HG23	2.18	0.44
1:C:264:VAL:HA	1:C:267:ILE:HG12	1.98	0.44
1:G:102:THR:C	1:G:104:MET:N	2.70	0.44
1:E:65:ASN:OD1	1:E:304:ALA:HB1	2.17	0.44
1:C:167:LYS:HB2	1:C:168:PRO:CD	2.47	0.44
1:E:100:GLU:O	1:E:125:GLU:HA	2.17	0.44
1:E:243:ASN:O	1:E:246:GLN:HG3	2.17	0.44
1:G:32:TYR:HB2	1:G:36:PHE:CD1	2.53	0.44
1:A:363:CYS:O	1:A:375:SER:HA	2.17	0.44
1:A:40:SER:CB	1:A:102:THR:HG21	2.47	0.44
1:A:133:LEU:HD22	1:A:134:PRO:HD2	1.98	0.44
1:A:281:GLU:C	1:A:282:HIS:CG	2.90	0.44

Continued on next page...

Continued from previous page...

Atom-1	Atom-2	Interatomic distance (Å)	Clash overlap (Å)
1:G:169:THR:CG2	1:G:169:THR:O	2.66	0.44
1:A:147:TYR:HB2	1:A:151:ARG:HD3	1.99	0.44
1:A:280:MET:CB	1:A:337:GLU:CA	2.90	0.44
1:A:334:ASN:O	1:A:335:VAL:HG23	2.18	0.44
1:A:376:PHE:CD1	1:A:376:PHE:C	2.91	0.44
1:C:127:SER:O	1:C:129:GLU:N	2.51	0.44
1:C:277:VAL:HG21	1:C:335:VAL:HG13	2.00	0.44
1:C:86:ILE:HG23	1:C:117:LEU:CD1	2.48	0.44
1:A:153:SER:HB3	3:A:407:HOH:O	2.18	0.44
1:C:373:LYS:O	1:G:119:HIS:NE2	2.50	0.44
1:G:167:LYS:C	1:G:169:THR:N	2.71	0.44
1:G:138:ASP:O	1:G:170:GLY:HA2	2.18	0.44
1:A:134:PRO:O	1:A:135:GLU:HB3	2.17	0.44
1:E:79:THR:OG1	1:E:98:ALA:HB1	2.18	0.44
1:C:372:PRO:O	1:C:373:LYS:CB	2.66	0.43
1:G:182:ALA:HA	1:G:183:PRO:HD3	1.78	0.43
1:G:32:TYR:O	1:G:35:TYR:N	2.51	0.43
1:E:245:GLN:CA	1:E:245:GLN:OE1	2.66	0.43
1:G:95:LYS:HE2	1:G:122:GLU:HB2	2.01	0.43
1:A:39:TYR:CD1	2:A:1:SAH:H3'	2.53	0.43
1:C:129:GLU:OE2	1:C:157:SER:HA	2.18	0.43
1:C:218:MET:HE1	1:A:111:LEU:HD21	2.01	0.43
1:E:151:ARG:O	1:E:152:GLU:CB	2.66	0.43
1:G:56:ASP:O	1:G:57:ALA:C	2.56	0.43
1:C:184:ILE:HD11	1:C:326:VAL:HG13	1.99	0.43
1:C:210:ILE:HG22	1:C:210:ILE:O	2.18	0.43
1:G:95:LYS:HG3	1:G:120:ILE:O	2.17	0.43
1:A:100:GLU:HG3	1:A:102:THR:H	1.83	0.43
1:A:277:VAL:HG21	1:A:335:VAL:CG1	2.48	0.43
1:C:155:PHE:CD2	1:C:257:MET:HE1	2.54	0.43
1:A:133:LEU:HA	1:A:133:LEU:HD23	1.69	0.43
1:A:133:LEU:N	1:A:165:TRP:CH2	2.80	0.43
1:A:267:ILE:CG2	1:A:267:ILE:O	2.66	0.43
1:C:151:ARG:CZ	1:C:383:GLU:OE1	2.67	0.43
1:E:77:VAL:HG13	1:E:128:VAL:HG21	2.00	0.43
1:A:127:SER:C	1:A:129:GLU:N	2.71	0.43
1:C:260:LEU:HD11	1:C:299:ARG:CZ	2.49	0.43
1:C:312:THR:O	1:C:313:ALA:C	2.58	0.43
1:A:178:ARG:O	1:A:292:PHE:HA	2.19	0.43
1:E:79:THR:OG1	1:E:82:GLY:HA2	2.19	0.43
1:G:267:ILE:O	1:G:267:ILE:CG2	2.66	0.43

Continued on next page...

Continued from previous page...

Atom-1	Atom-2	Interatomic distance (Å)	Clash overlap (Å)
1:E:277:VAL:HG11	1:E:335:VAL:HG12	2.01	0.42
1:C:83:ILE:HG23	1:C:84:LEU:N	2.34	0.42
1:G:218:MET:O	1:G:219:GLY:C	2.57	0.42
1:A:188:ILE:O	1:A:188:ILE:HG12	2.19	0.42
1:E:243:ASN:OD1	1:E:245:GLN:HB2	2.19	0.42
1:E:45:GLN:HG3	1:E:104:MET:SD	2.59	0.42
1:A:382:ILE:O	1:A:383:GLU:HB2	2.19	0.42
1:C:199:ALA:CB	1:C:229:GLN:OE1	2.67	0.42
1:C:376:PHE:C	1:C:376:PHE:CD1	2.93	0.42
1:A:40:SER:HA	1:A:102:THR:HG21	2.02	0.42
1:A:279:ASN:C	1:A:281:GLU:H	2.21	0.42
1:C:186:SER:CB	1:C:188:ILE:HG22	2.49	0.42
1:G:32:TYR:HB3	1:G:35:TYR:HB3	2.02	0.42
1:C:357:MET:HB2	1:C:382:ILE:HB	2.02	0.42
1:A:171:VAL:CG1	1:A:298:GLY:HA2	2.50	0.42
1:A:240:ASN:OD1	1:A:241:ASP:N	2.52	0.42
1:A:69:PHE:N	1:A:69:PHE:CD1	2.88	0.42
1:E:266:GLU:O	1:E:266:GLU:HG2	2.20	0.42
1:E:250:THR:N	1:E:275:THR:HG23	2.35	0.42
1:E:322:TRP:O	1:E:323:GLY:C	2.58	0.42
1:A:81:SER:O	1:A:108:ALA:HA	2.20	0.42
1:C:301:GLU:O	1:C:301:GLU:HG2	2.18	0.42
1:G:61:ALA:O	1:G:65:ASN:HB2	2.20	0.42
1:C:51:ASP:OD1	1:C:54:ARG:HB2	2.20	0.41
1:E:186:SER:CB	1:E:188:ILE:HG22	2.50	0.41
1:A:182:ALA:O	1:A:184:ILE:HG23	2.20	0.41
1:C:174:PRO:CB	1:C:294:VAL:HG13	2.51	0.41
1:C:370:GLY:HA2	1:C:371:ASN:HA	1.91	0.41
1:C:73:THR:HG22	1:C:137:VAL:HG22	2.02	0.41
1:E:183:PRO:HB2	1:E:248:ILE:HG13	2.01	0.41
1:G:359:ILE:HD11	1:G:382:ILE:HD11	2.02	0.41
1:A:65:ASN:C	1:A:67:HIS:H	2.23	0.41
1:E:58:TYR:OH	1:E:174:PRO:HD3	2.19	0.41
1:E:307:GLU:C	1:E:308:ILE:HD12	2.40	0.41
1:C:154:MET:HG2	1:C:154:MET:O	2.20	0.41
1:G:174:PRO:CB	1:G:294:VAL:HG13	2.47	0.41
1:G:315:SER:O	1:G:316:GLU:CB	2.68	0.41
1:A:65:ASN:C	1:A:67:HIS:N	2.74	0.41
1:E:171:VAL:CG1	1:E:298:GLY:HA2	2.51	0.41
1:E:343:LEU:HD22	1:E:363:CYS:HA	2.02	0.41
1:C:110:ALA:O	1:C:114:ALA:CB	2.68	0.41

Continued on next page...

Continued from previous page...

Atom-1	Atom-2	Interatomic distance (Å)	Clash overlap (Å)
1:G:343:LEU:CD2	1:G:363:CYS:HB2	2.51	0.41
1:G:341:LEU:CD2	1:G:365:ILE:HG12	2.51	0.41
1:A:112:VAL:HG11	1:A:121:VAL:HB	2.03	0.41
1:A:152:GLU:O	1:A:355:ARG:NH1	2.47	0.41
1:A:333:ILE:HD13	1:A:374:GLU:HG2	2.03	0.41
1:C:171:VAL:HG12	1:C:172:MET:N	2.35	0.41
1:G:110:ALA:O	1:E:220:VAL:HG21	2.20	0.41
1:A:59:PHE:CE1	1:A:63:PHE:CE2	3.09	0.41
1:E:223:LYS:HB3	3:E:427:HOH:O	2.21	0.41
1:E:349:ARG:HD2	1:E:354:HIS:O	2.20	0.41
1:G:346:LEU:HB3	1:G:360:GLU:HB2	2.03	0.41
1:C:229:GLN:OE1	1:C:233:TYR:CE2	2.74	0.41
1:E:167:LYS:NZ	3:E:414:HOH:O	2.53	0.41
2:E:1:SAH:HG2	2:E:1:SAH:H4'	1.30	0.41
1:E:273:ASN:O	1:E:342:ASN:HA	2.20	0.41
1:G:144:TRP:HE3	1:G:144:TRP:O	2.03	0.41
1:A:40:SER:HB3	1:A:102:THR:HG21	2.02	0.41
1:C:54:ARG:HH22	2:C:1:SAH:C	2.31	0.41
1:G:258:ASP:OD2	1:G:260:LEU:HB2	2.20	0.41
1:G:270:VAL:HG22	1:G:346:LEU:CD1	2.50	0.41
1:G:255:LYS:HD2	1:G:271:ARG:HH21	1.86	0.41
1:A:278:ILE:O	1:A:279:ASN:C	2.59	0.41
1:C:65:ASN:C	1:C:67:HIS:H	2.25	0.41
1:G:343:LEU:HD23	1:G:363:CYS:HB2	2.03	0.41
1:A:95:LYS:HG3	1:A:120:ILE:O	2.21	0.40
1:A:35:TYR:CE1	1:A:152:GLU:HB3	2.56	0.40
1:E:162:ARG:NH2	1:E:262:ALA:O	2.46	0.40
1:G:143:GLU:OE2	1:G:322:TRP:CZ2	2.71	0.40
1:A:206:PHE:CZ	1:A:210:ILE:HD12	2.55	0.40
1:C:131:ILE:HG22	1:C:132:SER:N	2.37	0.40
1:C:260:LEU:HD11	1:C:299:ARG:NH2	2.36	0.40
1:E:244:PRO:CD	1:E:316:GLU:HG3	2.50	0.40
1:G:376:PHE:CD1	1:G:376:PHE:C	2.95	0.40
1:C:260:LEU:HD21	1:C:299:ARG:NH2	2.33	0.40
1:G:181:LEU:HD22	1:G:254:VAL:HG11	2.02	0.40
1:G:292:PHE:HZ	1:G:322:TRP:CE2	2.40	0.40
1:G:42:LEU:HD12	1:G:42:LEU:H	1.87	0.40

All (1) symmetry-related close contacts are listed below. The label for Atom-2 includes the symmetry operator and encoded unit-cell translations to be applied.

Atom-1	Atom-2	Interatomic distance (Å)	Clash overlap (Å)
1:C:243:ASN:ND2	1:A:265:SER:OG[2_445]	2.09	0.11

5.3 Torsion angles [i](#)

5.3.1 Protein backbone [i](#)

In the following table, the Percentiles column shows the percent Ramachandran outliers of the chain as a percentile score with respect to all X-ray entries followed by that with respect to entries of similar resolution.

The Analysed column shows the number of residues for which the backbone conformation was analysed, and the total number of residues.

Mol	Chain	Analysed	Favoured	Allowed	Outliers	Percentiles	
1	A	348/376 (93%)	313 (90%)	27 (8%)	8 (2%)	6	10
1	C	347/376 (92%)	311 (90%)	29 (8%)	7 (2%)	7	13
1	E	347/376 (92%)	302 (87%)	39 (11%)	6 (2%)	9	16
1	G	351/376 (93%)	310 (88%)	33 (9%)	8 (2%)	6	10
All	All	1393/1504 (93%)	1236 (89%)	128 (9%)	29 (2%)	7	12

All (29) Ramachandran outliers are listed below:

Mol	Chain	Res	Type
1	C	372	PRO
1	G	213	TYR
1	G	372	PRO
1	A	280	MET
1	A	371	ASN
1	A	374	GLU
1	E	282	HIS
1	E	316	GLU
1	E	372	PRO
1	E	373	LYS
1	E	374	GLU
1	C	300	LYS
1	A	373	LYS
1	A	352	GLU
1	C	66	LYS
1	C	242	LEU
1	G	214	TYR

Continued on next page...

Continued from previous page...

Mol	Chain	Res	Type
1	G	371	ASN
1	G	374	GLU
1	A	135	GLU
1	C	373	LYS
1	G	142	SER
1	E	152	GLU
1	C	128	VAL
1	C	279	ASN
1	G	33	ALA
1	A	178	ARG
1	A	372	PRO
1	G	112	VAL

5.3.2 Protein sidechains ⓘ

In the following table, the Percentiles column shows the percent sidechain outliers of the chain as a percentile score with respect to all X-ray entries followed by that with respect to entries of similar resolution.

The Analysed column shows the number of residues for which the sidechain conformation was analysed, and the total number of residues.

Mol	Chain	Analysed	Rotameric	Outliers	Percentiles	
1	A	273/320 (85%)	261 (96%)	12 (4%)	28	52
1	C	272/320 (85%)	263 (97%)	9 (3%)	38	62
1	E	272/320 (85%)	256 (94%)	16 (6%)	19	37
1	G	266/320 (83%)	257 (97%)	9 (3%)	37	61
All	All	1083/1280 (85%)	1037 (96%)	46 (4%)	30	53

All (46) residues with a non-rotameric sidechain are listed below:

Mol	Chain	Res	Type
1	C	79	THR
1	C	128	VAL
1	C	279	ASN
1	C	294	VAL
1	C	317	GLN
1	C	319	CYS
1	C	320	THR
1	C	360	GLU
1	C	361	LEU

Continued on next page...

Continued from previous page...

Mol	Chain	Res	Type
1	G	38	THR
1	G	40	SER
1	G	111	LEU
1	G	148	PHE
1	G	220	VAL
1	G	294	VAL
1	G	299	ARG
1	G	311	THR
1	G	334	ASN
1	A	79	THR
1	A	127	SER
1	A	137	VAL
1	A	210	ILE
1	A	217	ASP
1	A	218	MET
1	A	265	SER
1	A	268	GLU
1	A	294	VAL
1	A	335	VAL
1	A	340	ASN
1	A	347	MET
1	E	37	CYS
1	E	95	LYS
1	E	137	VAL
1	E	169	THR
1	E	172	MET
1	E	212	SER
1	E	213	TYR
1	E	245	GLN
1	E	269	GLU
1	E	283	THR
1	E	301	GLU
1	E	312	THR
1	E	341	LEU
1	E	342	ASN
1	E	343	LEU
1	E	360	GLU

Some sidechains can be flipped to improve hydrogen bonding and reduce clashes. All (1) such sidechains are listed below:

Mol	Chain	Res	Type
1	G	334	ASN

5.3.3 RNA ⓘ

There are no RNA molecules in this entry.

5.4 Non-standard residues in protein, DNA, RNA chains ⓘ

There are no non-standard protein/DNA/RNA residues in this entry.

5.5 Carbohydrates ⓘ

There are no carbohydrates in this entry.

5.6 Ligand geometry ⓘ

4 ligands are modelled in this entry.

In the following table, the Counts columns list the number of bonds (or angles) for which Mogul statistics could be retrieved, the number of bonds (or angles) that are observed in the model and the number of bonds (or angles) that are defined in the Chemical Component Dictionary. The Link column lists molecule types, if any, to which the group is linked. The Z score for a bond length (or angle) is the number of standard deviations the observed value is removed from the expected value. A bond length (or angle) with $|Z| > 2$ is considered an outlier worth inspection. RMSZ is the root-mean-square of all Z scores of the bond lengths (or angles).

Mol	Type	Chain	Res	Link	Bond lengths			Bond angles		
					Counts	RMSZ	# $ Z > 2$	Counts	RMSZ	# $ Z > 2$
2	SAH	A	1	-	21,28,28	1.15	2 (9%)	20,40,40	1.74	2 (10%)
2	SAH	C	1	-	21,28,28	1.12	2 (9%)	20,40,40	1.80	3 (15%)
2	SAH	E	1	-	21,28,28	1.19	2 (9%)	20,40,40	1.64	3 (15%)
2	SAH	G	1	-	21,28,28	1.14	2 (9%)	20,40,40	1.88	2 (10%)

In the following table, the Chirals column lists the number of chiral outliers, the number of chiral centers analysed, the number of these observed in the model and the number defined in the Chemical Component Dictionary. Similar counts are reported in the Torsion and Rings columns. '-' means no outliers of that kind were identified.

Mol	Type	Chain	Res	Link	Chirals	Torsions	Rings
2	SAH	A	1	-	-	2/7/31/31	0/3/3/3
2	SAH	C	1	-	-	2/7/31/31	0/3/3/3
2	SAH	E	1	-	-	7/7/31/31	0/3/3/3
2	SAH	G	1	-	-	1/7/31/31	0/3/3/3

All (8) bond length outliers are listed below:

Mol	Chain	Res	Type	Atoms	Z	Observed(Å)	Ideal(Å)
2	E	1	SAH	C2-N3	4.17	1.38	1.32
2	G	1	SAH	C2-N3	3.70	1.38	1.32
2	A	1	SAH	C2-N3	3.58	1.37	1.32
2	C	1	SAH	C2-N3	3.52	1.37	1.32
2	C	1	SAH	C2-N1	2.39	1.38	1.33
2	E	1	SAH	C2-N1	2.36	1.38	1.33
2	G	1	SAH	C2-N1	2.23	1.38	1.33
2	A	1	SAH	C2-N1	2.18	1.38	1.33

All (10) bond angle outliers are listed below:

Mol	Chain	Res	Type	Atoms	Z	Observed(°)	Ideal(°)
2	G	1	SAH	N3-C2-N1	-5.93	119.40	128.68
2	A	1	SAH	N3-C2-N1	-5.66	119.83	128.68
2	C	1	SAH	N3-C2-N1	-5.59	119.94	128.68
2	E	1	SAH	N3-C2-N1	-5.30	120.39	128.68
2	G	1	SAH	C5'-SD-CG	-4.02	90.21	102.27
2	A	1	SAH	C5'-SD-CG	-3.65	91.31	102.27
2	E	1	SAH	C5'-SD-CG	-3.60	91.45	102.27
2	C	1	SAH	C5'-SD-CG	-3.59	91.50	102.27
2	C	1	SAH	C1'-N9-C4	-2.23	122.72	126.64
2	E	1	SAH	C4-C5-N7	-2.06	107.26	109.40

There are no chirality outliers.

All (12) torsion outliers are listed below:

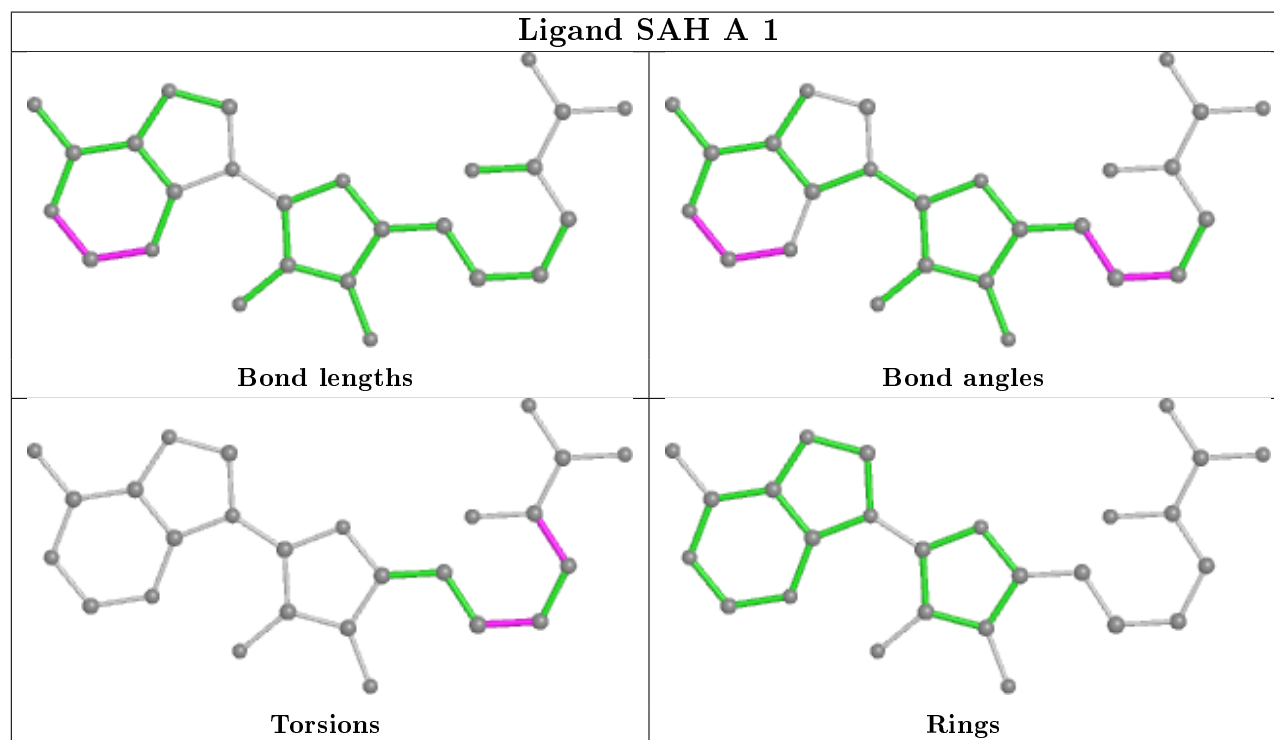
Mol	Chain	Res	Type	Atoms
2	E	1	SAH	N-CA-CB-CG
2	E	1	SAH	C-CA-CB-CG
2	E	1	SAH	O4'-C4'-C5'-SD
2	E	1	SAH	C3'-C4'-C5'-SD
2	E	1	SAH	C4'-C5'-SD-CG
2	A	1	SAH	CB-CG-SD-C5'
2	E	1	SAH	CB-CG-SD-C5'
2	E	1	SAH	CA-CB-CG-SD
2	C	1	SAH	CB-CG-SD-C5'
2	G	1	SAH	CB-CG-SD-C5'
2	A	1	SAH	N-CA-CB-CG
2	C	1	SAH	N-CA-CB-CG

There are no ring outliers.

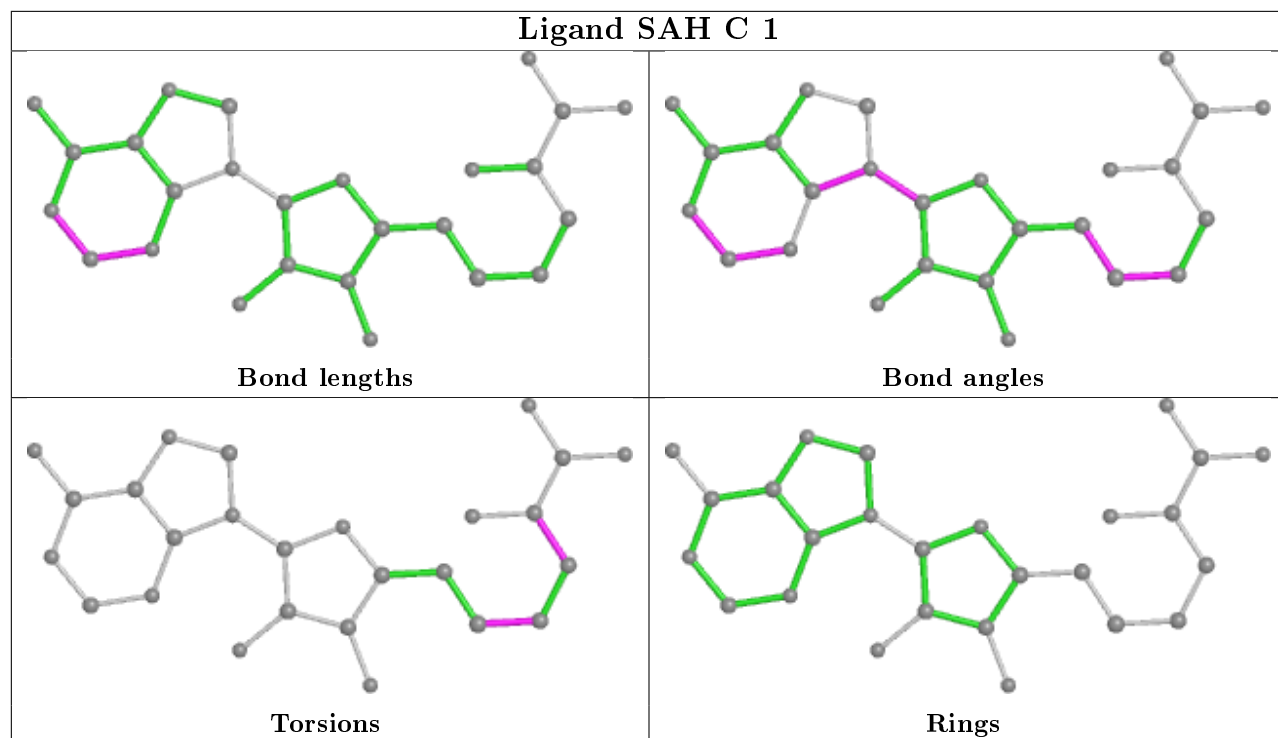
3 monomers are involved in 6 short contacts:

Mol	Chain	Res	Type	Clashes	Symm-Clashes
2	A	1	SAH	3	0
2	C	1	SAH	1	0
2	E	1	SAH	2	0

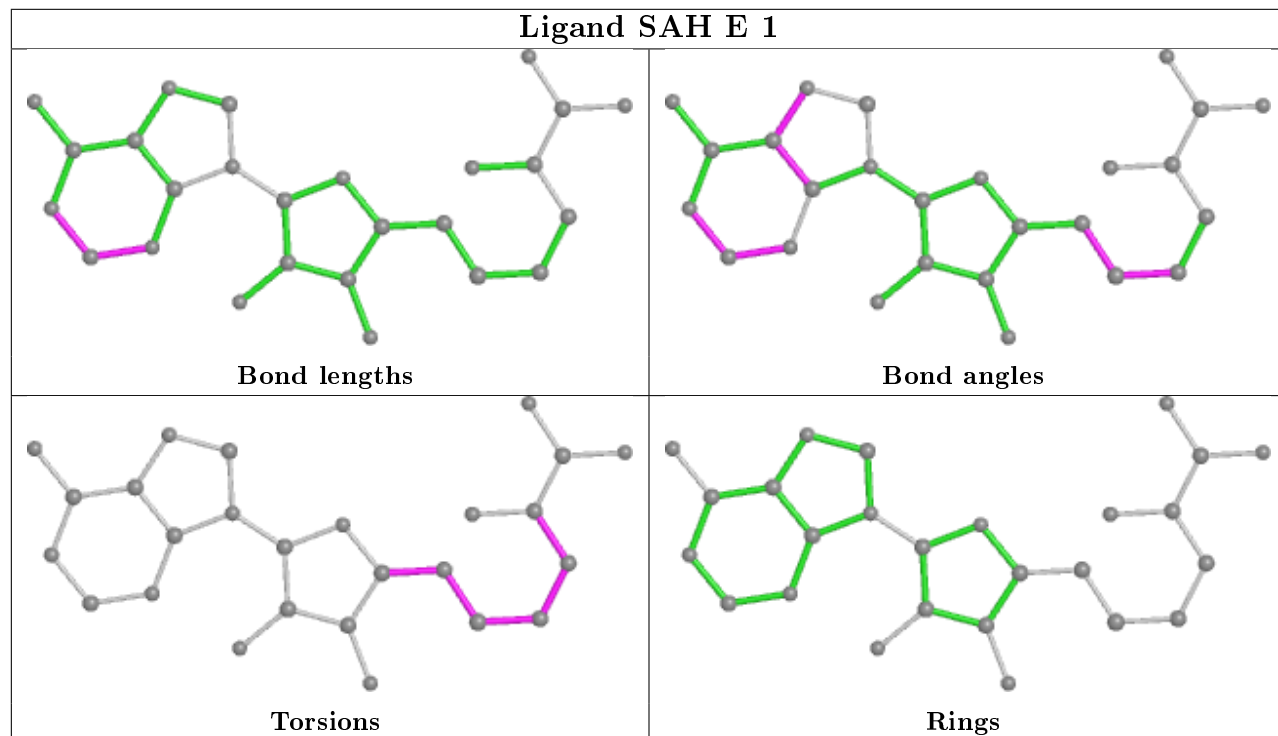
The following is a two-dimensional graphical depiction of Mogul quality analysis of bond lengths, bond angles, torsion angles, and ring geometry for all instances of the Ligand of Interest. In addition, ligands with molecular weight > 250 and outliers as shown on the validation Tables will also be included. For torsion angles, if less than 5% of the Mogul distribution of torsion angles is within 10 degrees of the torsion angle in question, then that torsion angle is considered an outlier. Any bond that is central to one or more torsion angles identified as an outlier by Mogul will be highlighted in the graph. For rings, the root-mean-square deviation (RMSD) between the ring in question and similar rings identified by Mogul is calculated over all ring torsion angles. If the average RMSD is greater than 60 degrees and the minimal RMSD between the ring in question and any Mogul-identified rings is also greater than 60 degrees, then that ring is considered an outlier. The outliers are highlighted in purple. The color gray indicates Mogul did not find sufficient equivalents in the CSD to analyse the geometry.

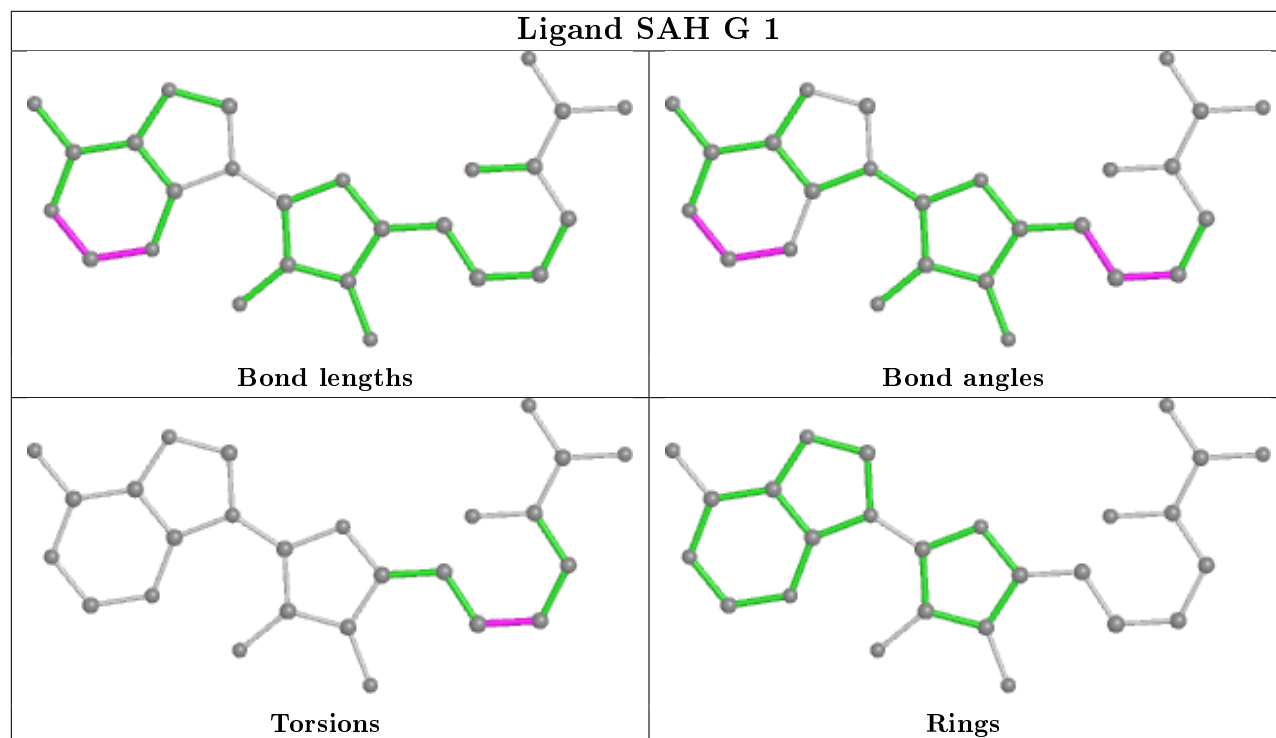


Ligand SAH C 1



Ligand SAH E 1





5.7 Other polymers [i](#)

There are no such residues in this entry.

5.8 Polymer linkage issues [i](#)

There are no chain breaks in this entry.

6 Fit of model and data [i](#)

6.1 Protein, DNA and RNA chains [i](#)

In the following table, the column labelled ‘#RSRZ> 2’ contains the number (and percentage) of RSRZ outliers, followed by percent RSRZ outliers for the chain as percentile scores relative to all X-ray entries and entries of similar resolution. The OWAB column contains the minimum, median, 95th percentile and maximum values of the occupancy-weighted average B-factor per residue. The column labelled ‘Q< 0.9’ lists the number of (and percentage) of residues with an average occupancy less than 0.9.

Mol	Chain	Analysed	<RSRZ>	#RSRZ>2	OWAB(Å ²)	Q<0.9
1	A	350/376 (93%)	-0.89	0 100 100	26, 37, 49, 61	0
1	C	349/376 (92%)	-0.88	0 100 100	25, 37, 48, 74	0
1	E	349/376 (92%)	-0.90	0 100 100	24, 34, 47, 69	0
1	G	353/376 (93%)	-0.92	0 100 100	25, 34, 45, 53	0
All	All	1401/1504 (93%)	-0.90	0 100 100	24, 35, 48, 74	0

There are no RSRZ outliers to report.

6.2 Non-standard residues in protein, DNA, RNA chains [i](#)

There are no non-standard protein/DNA/RNA residues in this entry.

6.3 Carbohydrates [i](#)

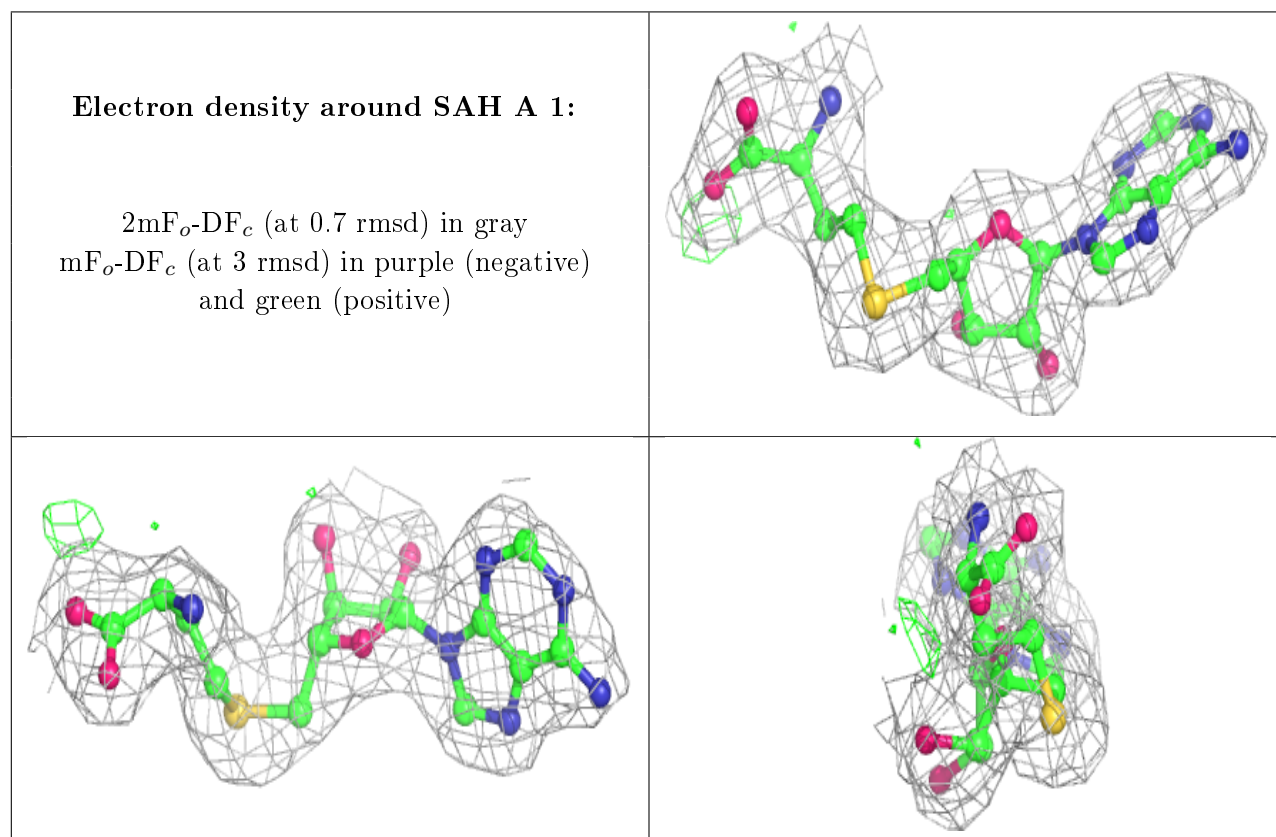
There are no carbohydrates in this entry.

6.4 Ligands [i](#)

In the following table, the Atoms column lists the number of modelled atoms in the group and the number defined in the chemical component dictionary. The B-factors column lists the minimum, median, 95th percentile and maximum values of B factors of atoms in the group. The column labelled ‘Q< 0.9’ lists the number of atoms with occupancy less than 0.9.

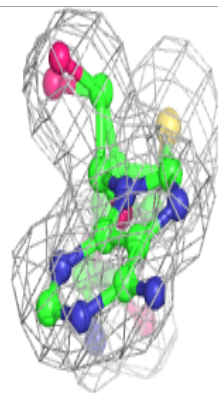
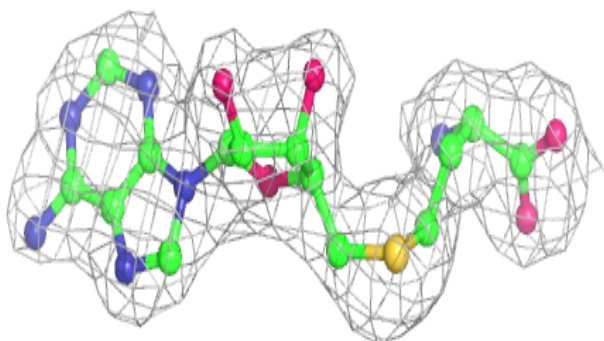
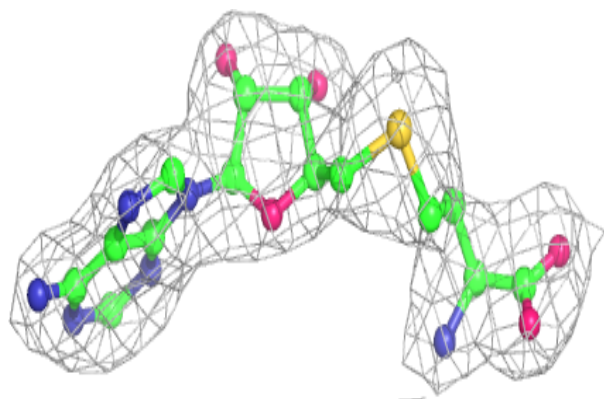
Mol	Type	Chain	Res	Atoms	RSCC	RSR	B-factors(Å ²)	Q<0.9
2	SAH	A	1	26/26	0.98	0.10	22,32,36,38	0
2	SAH	C	1	26/26	0.98	0.12	26,34,36,37	0
2	SAH	E	1	26/26	0.98	0.11	26,33,38,39	0
2	SAH	G	1	26/26	0.98	0.12	24,29,32,34	0

The following is a graphical depiction of the model fit to experimental electron density of all instances of the Ligand of Interest. In addition, ligands with molecular weight > 250 and outliers as shown on the geometry validation Tables will also be included. Each fit is shown from different orientation to approximate a three-dimensional view.

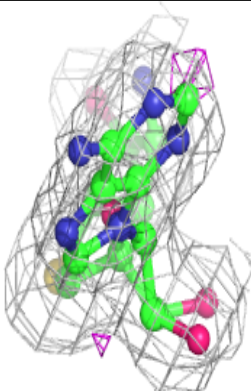
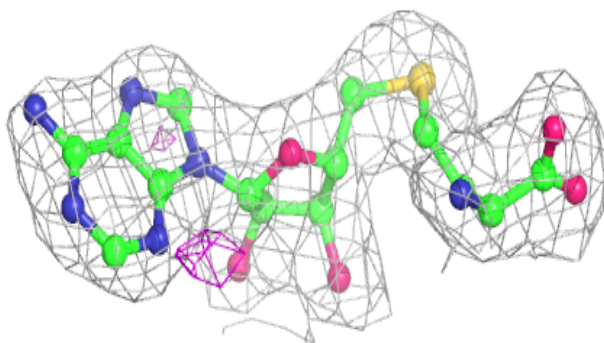
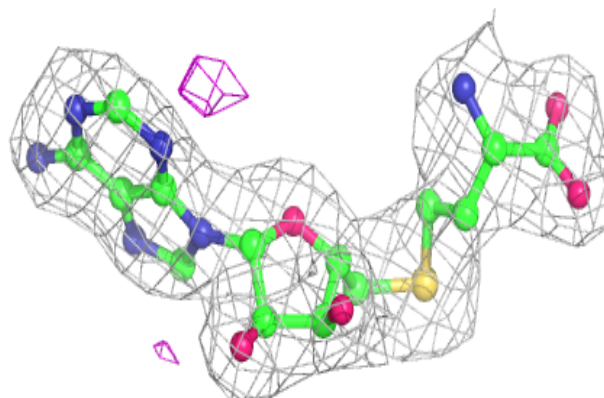


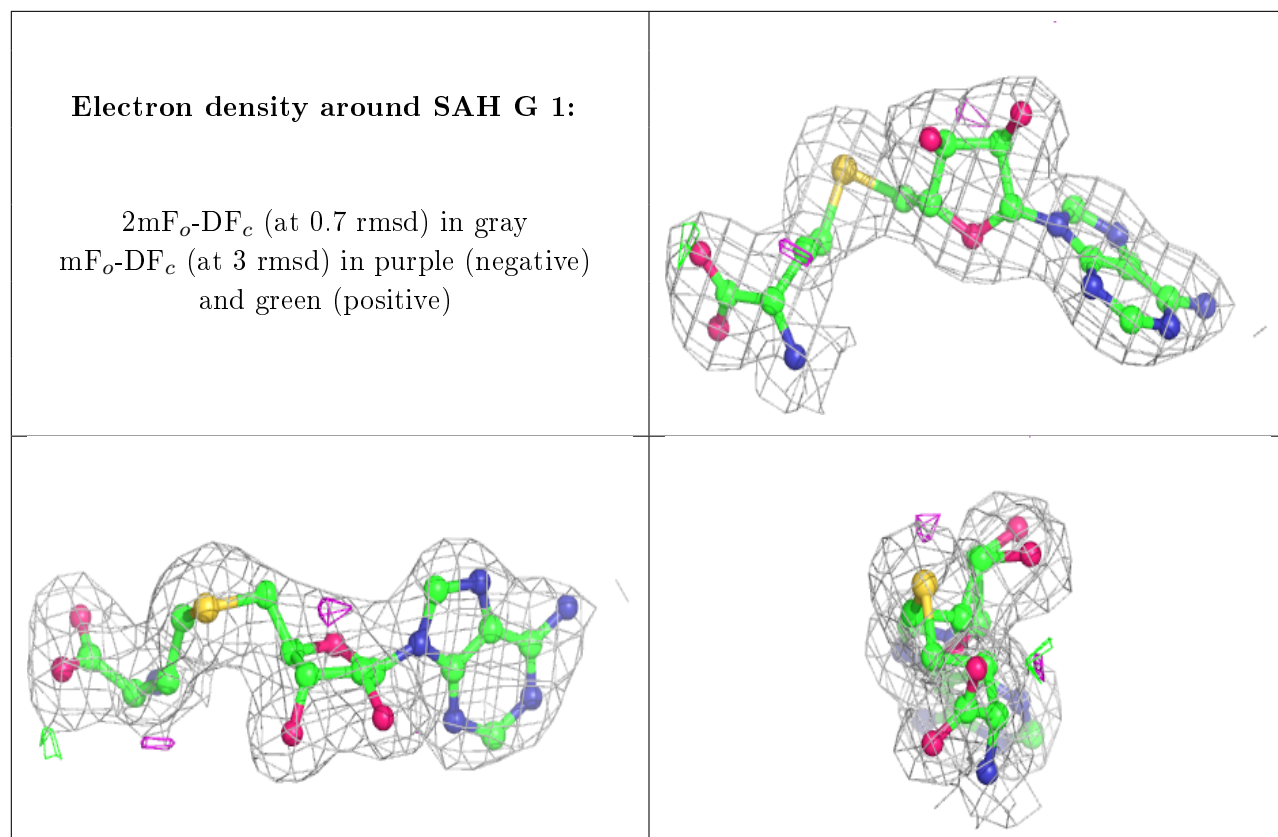
Electron density around SAH C 1:

$2mF_o-DF_c$ (at 0.7 rmsd) in gray
 mF_o-DF_c (at 3 rmsd) in purple (negative)
and green (positive)

**Electron density around SAH E 1:**

$2mF_o-DF_c$ (at 0.7 rmsd) in gray
 mF_o-DF_c (at 3 rmsd) in purple (negative)
and green (positive)





6.5 Other polymers [i](#)

There are no such residues in this entry.