



Full wwPDB X-ray Structure Validation Report ⓘ

May 13, 2020 – 05:55 am BST

PDB ID : 4R42
Title : Crystal structure of KatB, a manganese catalase from Anabaena PCC7120
Authors : Bihani, S.C.
Deposited on : 2014-08-19
Resolution : 1.90 Å(reported)

This is a Full wwPDB X-ray Structure Validation Report for a publicly released PDB entry.

We welcome your comments at validation@mail.wwpdb.org

A user guide is available at

<https://www.wwpdb.org/validation/2017/XrayValidationReportHelp>

with specific help available everywhere you see the ⓘ symbol.

The following versions of software and data (see [references ⓘ](#)) were used in the production of this report:

MolProbity : 4.02b-467
Mogul : 1.8.5 (274361), CSD as541be (2020)
Xtriage (Phenix) : 1.13
EDS : 2.11
buster-report : 1.1.7 (2018)
Percentile statistics : 20191225.v01 (using entries in the PDB archive December 25th 2019)
Refmac : 5.8.0158
CCP4 : 7.0.044 (Gargrove)
Ideal geometry (proteins) : Engh & Huber (2001)
Ideal geometry (DNA, RNA) : Parkinson et al. (1996)
Validation Pipeline (wwPDB-VP) : 2.11

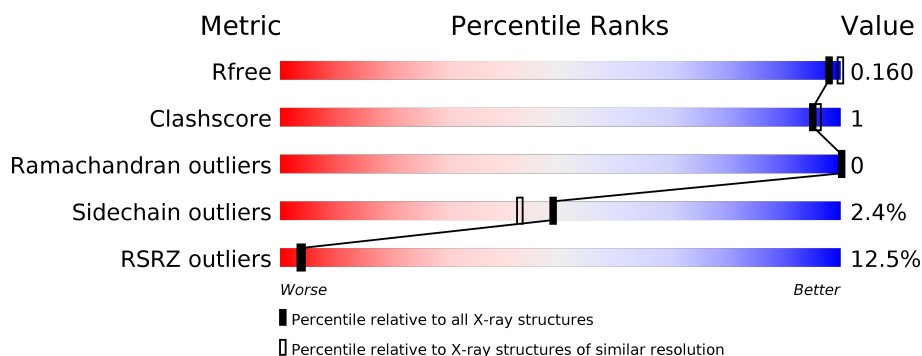
1 Overall quality at a glance

The following experimental techniques were used to determine the structure:

X-RAY DIFFRACTION

The reported resolution of this entry is 1.90 Å.

Percentile scores (ranging between 0-100) for global validation metrics of the entry are shown in the following graphic. The table shows the number of entries on which the scores are based.



Metric	Whole archive (#Entries)	Similar resolution (#Entries, resolution range(Å))
R_{free}	130704	6207 (1.90-1.90)
Clashscore	141614	6847 (1.90-1.90)
Ramachandran outliers	138981	6760 (1.90-1.90)
Sidechain outliers	138945	6760 (1.90-1.90)
RSRZ outliers	127900	6082 (1.90-1.90)

The table below summarises the geometric issues observed across the polymeric chains and their fit to the electron density. The red, orange, yellow and green segments on the lower bar indicate the fraction of residues that contain outliers for ≥ 3 , 2, 1 and 0 types of geometric quality criteria respectively. A grey segment represents the fraction of residues that are not modelled. The numeric value for each fraction is indicated below the corresponding segment, with a dot representing fractions $\leq 5\%$. The upper red bar (where present) indicates the fraction of residues that have poor fit to the electron density. The numeric value is given above the bar.

Mol	Chain	Length	Quality of chain
1	A	236	<div> <div>7%</div> <div> <div></div> <div>89%</div> <div>• 7%</div> </div> </div>
1	B	236	<div> <div>17%</div> <div> <div></div> <div>89%</div> <div>• • 7%</div> </div> </div>
1	C	236	<div> <div>10%</div> <div> <div></div> <div>89%</div> <div>• 7%</div> </div> </div>

2 Entry composition

There are 8 unique types of molecules in this entry. The entry contains 10805 atoms, of which 5116 are hydrogens and 0 are deuteriums.

In the tables below, the ZeroOcc column contains the number of atoms modelled with zero occupancy, the AltConf column contains the number of residues with at least one atom in alternate conformation and the Trace column contains the number of residues modelled with at most 2 atoms.

- Molecule 1 is a protein called Alr3090 protein.

Mol	Chain	Residues	Atoms						ZeroOcc	AltConf	Trace
1	A	219	Total	C	H	N	O	S	0	4	0
			3437	1108	1697	293	333	6			
1	B	219	Total	C	H	N	O	S	0	5	0
			3456	1115	1706	294	334	7			
1	C	220	Total	C	H	N	O	S	0	3	0
			3434	1107	1691	294	336	6			

There are 21 discrepancies between the modelled and reference sequences:

Chain	Residue	Modelled	Actual	Comment	Reference
A	2	VAL	PHE	ENGINEERED MUTATION	UNP Q8YSJ5
A	231	HIS	-	EXPRESSION TAG	UNP Q8YSJ5
A	232	HIS	-	EXPRESSION TAG	UNP Q8YSJ5
A	233	HIS	-	EXPRESSION TAG	UNP Q8YSJ5
A	234	HIS	-	EXPRESSION TAG	UNP Q8YSJ5
A	235	HIS	-	EXPRESSION TAG	UNP Q8YSJ5
A	236	HIS	-	EXPRESSION TAG	UNP Q8YSJ5
B	2	VAL	PHE	ENGINEERED MUTATION	UNP Q8YSJ5
B	231	HIS	-	EXPRESSION TAG	UNP Q8YSJ5
B	232	HIS	-	EXPRESSION TAG	UNP Q8YSJ5
B	233	HIS	-	EXPRESSION TAG	UNP Q8YSJ5
B	234	HIS	-	EXPRESSION TAG	UNP Q8YSJ5
B	235	HIS	-	EXPRESSION TAG	UNP Q8YSJ5
B	236	HIS	-	EXPRESSION TAG	UNP Q8YSJ5
C	2	VAL	PHE	ENGINEERED MUTATION	UNP Q8YSJ5
C	231	HIS	-	EXPRESSION TAG	UNP Q8YSJ5
C	232	HIS	-	EXPRESSION TAG	UNP Q8YSJ5
C	233	HIS	-	EXPRESSION TAG	UNP Q8YSJ5
C	234	HIS	-	EXPRESSION TAG	UNP Q8YSJ5
C	235	HIS	-	EXPRESSION TAG	UNP Q8YSJ5
C	236	HIS	-	EXPRESSION TAG	UNP Q8YSJ5

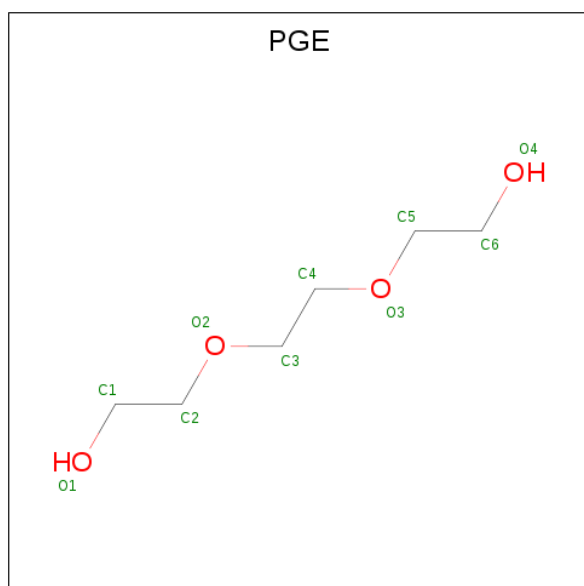
- Molecule 2 is MANGANESE (II) ION (three-letter code: MN) (formula: Mn).

Mol	Chain	Residues	Atoms	ZeroOcc	AltConf
2	B	2	Total Mn 2 2	0	0
2	A	2	Total Mn 2 2	0	0
2	C	2	Total Mn 2 2	0	0

- Molecule 3 is CALCIUM ION (three-letter code: CA) (formula: Ca).

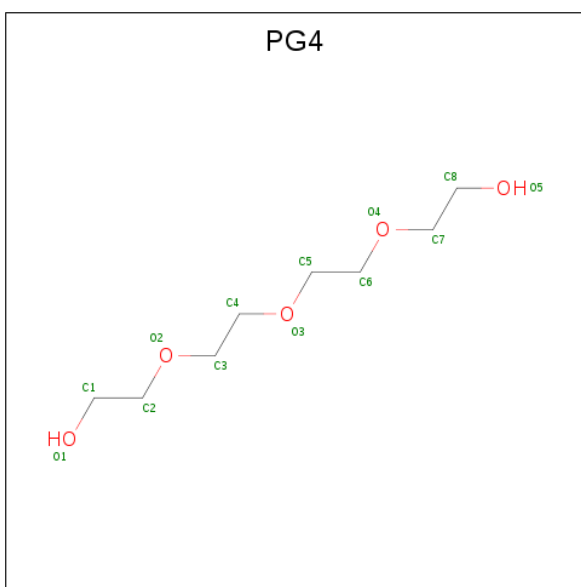
Mol	Chain	Residues	Atoms	ZeroOcc	AltConf
3	B	2	Total Ca 2 2	0	0
3	A	2	Total Ca 2 2	0	0
3	C	1	Total Ca 1 1	0	0

- Molecule 4 is TRIETHYLENE GLYCOL (three-letter code: PGE) (formula: C₆H₁₄O₄).



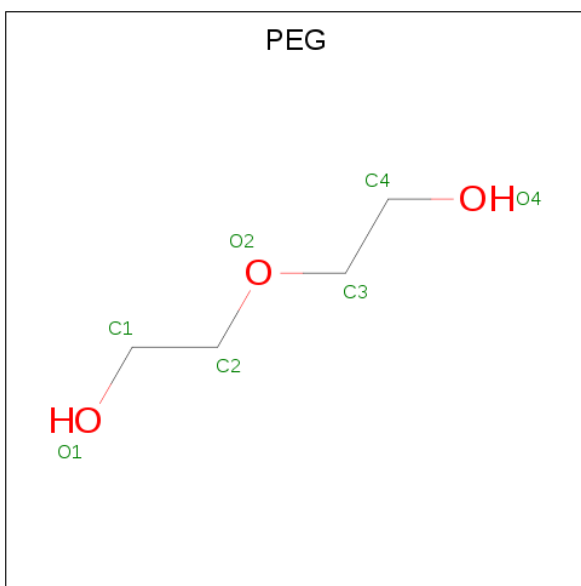
Mol	Chain	Residues	Atoms	ZeroOcc	AltConf
4	A	1	Total C H O 21 6 11 4	0	0
4	C	1	Total C H O 21 6 11 4	0	0

- Molecule 5 is TETRAETHYLENE GLYCOL (three-letter code: PG4) (formula: C₈H₁₈O₅).



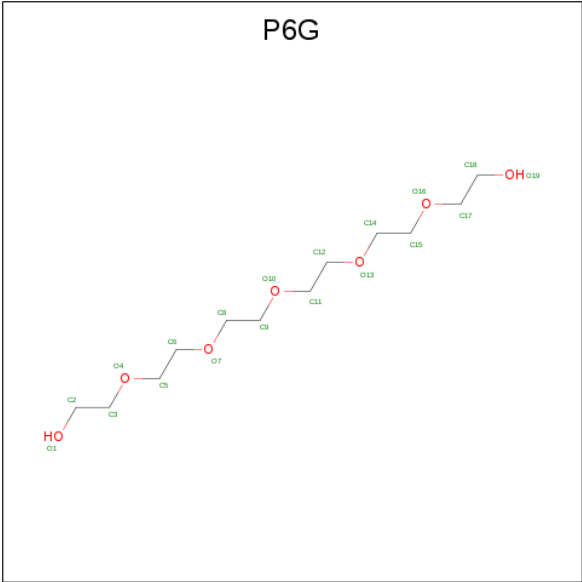
Mol	Chain	Residues	Atoms			ZeroOcc	AltConf
5	A	1	Total	C	O	0	0
			13	8	5		

- Molecule 6 is DI(HYDROXYETHYL)ETHER (three-letter code: PEG) (formula: $C_4H_{10}O_3$).



Mol	Chain	Residues	Atoms			ZeroOcc	AltConf
6	B	1	Total	C	O	0	0
			7	4	3		

- Molecule 7 is HEXAETHYLENE GLYCOL (three-letter code: P6G) (formula: $C_{12}H_{26}O_7$).



Mol	Chain	Residues	Atoms			ZeroOcc	AltConf
7	C	1	Total	C	O	0	0
			19	12	7		

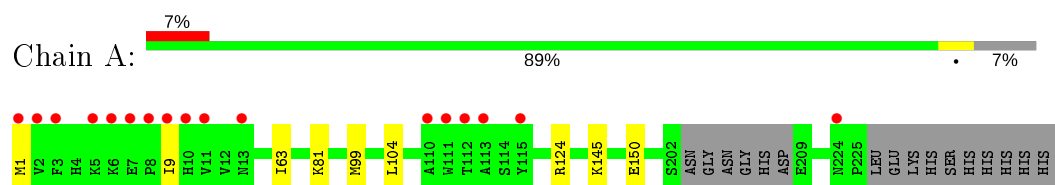
- Molecule 8 is water.

Mol	Chain	Residues	Atoms		ZeroOcc	AltConf
8	A	142	Total	O	0	0
			142	142		
8	B	130	Total	O	0	0
			130	130		
8	C	114	Total	O	0	0
			114	114		

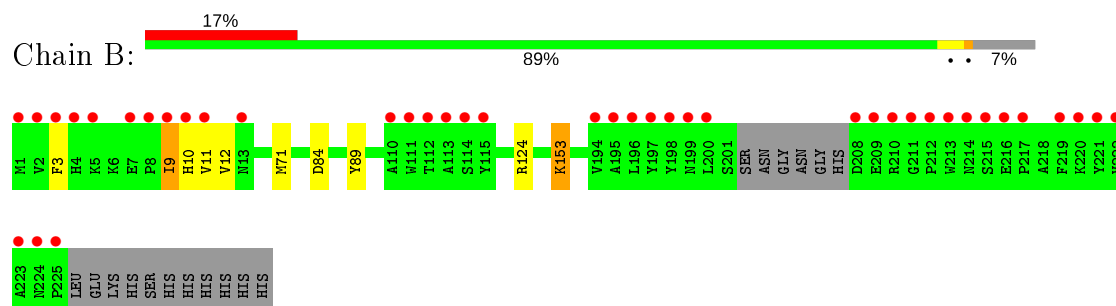
3 Residue-property plots [i](#)

These plots are drawn for all protein, RNA and DNA chains in the entry. The first graphic for a chain summarises the proportions of the various outlier classes displayed in the second graphic. The second graphic shows the sequence view annotated by issues in geometry and electron density. Residues are color-coded according to the number of geometric quality criteria for which they contain at least one outlier: green = 0, yellow = 1, orange = 2 and red = 3 or more. A red dot above a residue indicates a poor fit to the electron density ($RSRZ > 2$). Stretches of 2 or more consecutive residues without any outlier are shown as a green connector. Residues present in the sample, but not in the model, are shown in grey.

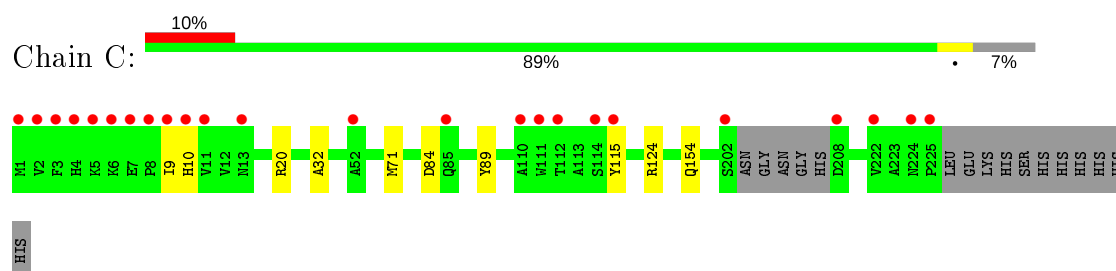
• Molecule 1: Alr3090 protein



• Molecule 1: Alr3090 protein



• Molecule 1: Alr3090 protein



4 Data and refinement statistics

Property	Value	Source
Space group	P 41 21 2	Depositor
Cell constants a, b, c, α , β , γ	101.40 Å 101.40 Å 136.20 Å 90.00° 90.00° 90.00°	Depositor
Resolution (Å)	45.35 – 1.90 47.52 – 1.90	Depositor EDS
% Data completeness (in resolution range)	99.8 (45.35-1.90) 99.8 (47.52-1.90)	Depositor EDS
R_{merge}	(Not available)	Depositor
R_{sym}	(Not available)	Depositor
$\langle I/\sigma(I) \rangle$ ¹	1.64 (at 1.90 Å)	Xtriage
Refinement program	PHENIX dev_1701	Depositor
R, R_{free}	0.134 , 0.160 0.137 , 0.160	Depositor DCC
R_{free} test set	2846 reflections (5.06%)	wwPDB-VP
Wilson B-factor (Å ²)	20.2	Xtriage
Anisotropy	0.302	Xtriage
Bulk solvent k_{sol} (e/Å ³), B_{sol} (Å ²)	0.44 , 59.0	EDS
L-test for twinning ²	$\langle L \rangle = 0.48$, $\langle L^2 \rangle = 0.31$	Xtriage
Estimated twinning fraction	No twinning to report.	Xtriage
F_o, F_c correlation	0.97	EDS
Total number of atoms	10805	wwPDB-VP
Average B, all atoms (Å ²)	32.0	wwPDB-VP

Xtriage's analysis on translational NCS is as follows: *The largest off-origin peak in the Patterson function is 4.21% of the height of the origin peak. No significant pseudotranslation is detected.*

¹Intensities estimated from amplitudes.

²Theoretical values of $\langle |L| \rangle$, $\langle L^2 \rangle$ for acentric reflections are 0.5, 0.333 respectively for untwinned datasets, and 0.375, 0.2 for perfectly twinned datasets.

5 Model quality [i](#)

5.1 Standard geometry [i](#)

Bond lengths and bond angles in the following residue types are not validated in this section: PGE, CA, MN, PG4, P6G, PEG

The Z score for a bond length (or angle) is the number of standard deviations the observed value is removed from the expected value. A bond length (or angle) with $|Z| > 5$ is considered an outlier worth inspection. RMSZ is the root-mean-square of all Z scores of the bond lengths (or angles).

Mol	Chain	Bond lengths		Bond angles	
		RMSZ	$\# Z > 5$	RMSZ	$\# Z > 5$
1	A	0.36	0/1791	0.52	0/2426
1	B	0.35	0/1804	0.51	0/2443
1	C	0.33	0/1791	0.49	0/2426
All	All	0.35	0/5386	0.51	0/7295

There are no bond length outliers.

There are no bond angle outliers.

There are no chirality outliers.

There are no planarity outliers.

5.2 Too-close contacts [i](#)

In the following table, the Non-H and H(model) columns list the number of non-hydrogen atoms and hydrogen atoms in the chain respectively. The H(added) column lists the number of hydrogen atoms added and optimized by MolProbity. The Clashes column lists the number of clashes within the asymmetric unit, whereas Symm-Clashes lists symmetry related clashes.

Mol	Chain	Non-H	H(model)	H(added)	Clashes	Symm-Clashes
1	A	1740	1697	1701	4	0
1	B	1750	1706	1712	4	0
1	C	1743	1691	1694	4	0
2	A	2	0	0	0	0
2	B	2	0	0	0	0
2	C	2	0	0	0	0
3	A	2	0	0	0	0
3	B	2	0	0	0	0
3	C	1	0	0	0	0
4	A	10	11	14	1	0

Continued on next page...

Continued from previous page...

Mol	Chain	Non-H	H(model)	H(added)	Clashes	Symm-Clashes
4	C	10	11	14	0	0
5	A	13	0	18	0	0
6	B	7	0	10	1	0
7	C	19	0	26	3	0
8	A	142	0	0	1	0
8	B	130	0	0	0	0
8	C	114	0	0	2	0
All	All	5689	5116	5189	13	0

The all-atom clashscore is defined as the number of clashes found per 1000 atoms (including hydrogen atoms). The all-atom clashscore for this structure is 1.

All (13) close contacts within the same asymmetric unit are listed below, sorted by their clash magnitude.

Atom-1	Atom-2	Interatomic distance (Å)	Clash overlap (Å)
7:C:305:P6G:H62	8:C:442:HOH:O	1.94	0.67
1:C:20:ARG:CZ	7:C:305:P6G:H32	2.40	0.52
1:A:145:LYS:NZ	8:A:483:HOH:O	2.46	0.48
1:B:84:ASP:HA	1:B:89:TYR:CD2	2.50	0.47
1:A:150:GLU:OE1	4:A:305:PGE:O1	2.32	0.47
1:C:32:ALA:HA	1:C:115:TYR:CD2	2.51	0.45
1:C:84:ASP:HA	1:C:89:TYR:CD2	2.51	0.44
1:C:9:ILE:HG13	1:C:71:MET:SD	2.59	0.43
1:B:9:ILE:HG13	1:B:71[B]:MET:SD	2.59	0.42
1:A:81:LYS:HA	1:A:99:MET:HE3	2.01	0.42
7:C:305:P6G:H81	8:C:442:HOH:O	2.20	0.41
1:B:153:LYS:HE2	6:B:305:PEG:H12	2.02	0.41
1:A:63:ILE:HG21	1:B:3:PHE:HA	2.04	0.40

There are no symmetry-related clashes.

5.3 Torsion angles [i](#)

5.3.1 Protein backbone [i](#)

In the following table, the Percentiles column shows the percent Ramachandran outliers of the chain as a percentile score with respect to all X-ray entries followed by that with respect to entries of similar resolution.

The Analysed column shows the number of residues for which the backbone conformation was analysed, and the total number of residues.

Mol	Chain	Analysed	Favoured	Allowed	Outliers	Percentiles	
1	A	219/236 (93%)	215 (98%)	4 (2%)	0	100	100
1	B	220/236 (93%)	216 (98%)	4 (2%)	0	100	100
1	C	219/236 (93%)	216 (99%)	3 (1%)	0	100	100
All	All	658/708 (93%)	647 (98%)	11 (2%)	0	100	100

There are no Ramachandran outliers to report.

5.3.2 Protein sidechains ⓘ

In the following table, the Percentiles column shows the percent sidechain outliers of the chain as a percentile score with respect to all X-ray entries followed by that with respect to entries of similar resolution.

The Analysed column shows the number of residues for which the sidechain conformation was analysed, and the total number of residues.

Mol	Chain	Analysed	Rotameric	Outliers	Percentiles	
1	A	186/197 (94%)	182 (98%)	4 (2%)	52	47
1	B	187/197 (95%)	181 (97%)	6 (3%)	39	30
1	C	186/197 (94%)	183 (98%)	3 (2%)	62	60
All	All	559/591 (95%)	546 (98%)	13 (2%)	49	45

All (13) residues with a non-rotameric sidechain are listed below:

Mol	Chain	Res	Type
1	A	1	MET
1	A	9	ILE
1	A	104	LEU
1	A	124	ARG
1	B	9	ILE
1	B	10	HIS
1	B	11	VAL
1	B	12	VAL
1	B	124	ARG
1	B	153	LYS
1	C	10	HIS
1	C	124	ARG
1	C	154	GLN

Some sidechains can be flipped to improve hydrogen bonding and reduce clashes. There are no such sidechains identified.

5.3.3 RNA ⓘ

There are no RNA molecules in this entry.

5.4 Non-standard residues in protein, DNA, RNA chains ⓘ

There are no non-standard protein/DNA/RNA residues in this entry.

5.5 Carbohydrates ⓘ

There are no carbohydrates in this entry.

5.6 Ligand geometry ⓘ

Of 16 ligands modelled in this entry, 11 are monoatomic - leaving 5 for Mogul analysis.

In the following table, the Counts columns list the number of bonds (or angles) for which Mogul statistics could be retrieved, the number of bonds (or angles) that are observed in the model and the number of bonds (or angles) that are defined in the Chemical Component Dictionary. The Link column lists molecule types, if any, to which the group is linked. The Z score for a bond length (or angle) is the number of standard deviations the observed value is removed from the expected value. A bond length (or angle) with $|Z| > 2$ is considered an outlier worth inspection. RMSZ is the root-mean-square of all Z scores of the bond lengths (or angles).

Mol	Type	Chain	Res	Link	Bond lengths			Bond angles		
					Counts	RMSZ	$\# Z > 2$	Counts	RMSZ	$\# Z > 2$
4	PGE	A	305	-	9,9,9	0.32	0	8,8,8	0.37	0
7	P6G	C	305	-	18,18,18	0.70	0	17,17,17	0.30	0
5	PG4	A	306	-	12,12,12	0.67	0	11,11,11	0.30	0
4	PGE	C	304	-	9,9,9	0.31	0	8,8,8	0.28	0
6	PEG	B	305	-	6,6,6	0.28	0	5,5,5	0.21	0

In the following table, the Chirals column lists the number of chiral outliers, the number of chiral centers analysed, the number of these observed in the model and the number defined in the Chemical Component Dictionary. Similar counts are reported in the Torsion and Rings columns. '-' means no outliers of that kind were identified.

Mol	Type	Chain	Res	Link	Chirals	Torsions	Rings
4	PGE	A	305	-	-	4/7/7/7	-
7	P6G	C	305	-	-	9/16/16/16	-
5	PG4	A	306	-	-	1/10/10/10	-
4	PGE	C	304	-	-	4/7/7/7	-

Continued on next page...

Continued from previous page...

Mol	Type	Chain	Res	Link	Chirals	Torsions	Rings
6	PEG	B	305	-	-	2/4/4/4	-

There are no bond length outliers.

There are no bond angle outliers.

There are no chirality outliers.

All (20) torsion outliers are listed below:

Mol	Chain	Res	Type	Atoms
4	A	305	PGE	O2-C3-C4-O3
6	B	305	PEG	O1-C1-C2-O2
4	A	305	PGE	O3-C5-C6-O4
7	C	305	P6G	O13-C14-C15-O16
7	C	305	P6G	O4-C5-C6-O7
4	C	304	PGE	O1-C1-C2-O2
4	A	305	PGE	O1-C1-C2-O2
4	C	304	PGE	O2-C3-C4-O3
4	C	304	PGE	O3-C5-C6-O4
7	C	305	P6G	O1-C2-C3-O4
7	C	305	P6G	C18-C17-O16-C15
7	C	305	P6G	O10-C11-C12-O13
7	C	305	P6G	C9-C8-O7-C6
6	B	305	PEG	C4-C3-O2-C2
7	C	305	P6G	C15-C14-O13-C12
4	C	304	PGE	C6-C5-O3-C4
4	A	305	PGE	C3-C4-O3-C5
5	A	306	PG4	O4-C7-C8-O5
7	C	305	P6G	C5-C6-O7-C8
7	C	305	P6G	O7-C8-C9-O10

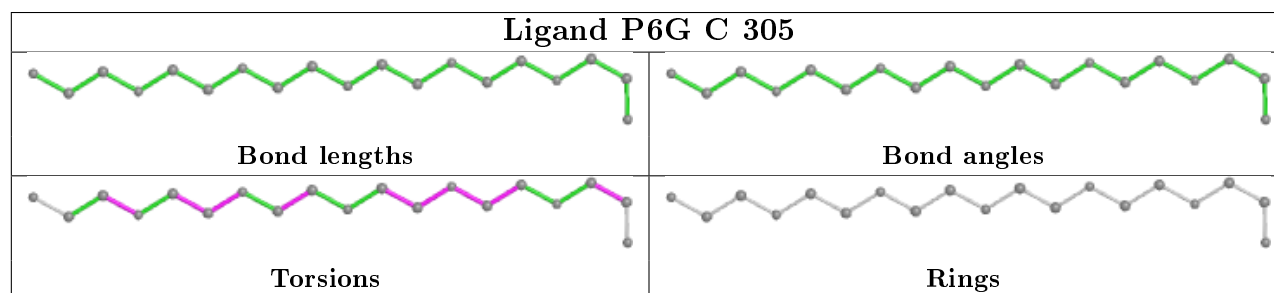
There are no ring outliers.

3 monomers are involved in 5 short contacts:

Mol	Chain	Res	Type	Clashes	Symm-Clashes
4	A	305	PGE	1	0
7	C	305	P6G	3	0
6	B	305	PEG	1	0

The following is a two-dimensional graphical depiction of Mogul quality analysis of bond lengths, bond angles, torsion angles, and ring geometry for all instances of the Ligand of Interest. In addition, ligands with molecular weight > 250 and outliers as shown on the validation Tables will

also be included. For torsion angles, if less than 5% of the Mogul distribution of torsion angles is within 10 degrees of the torsion angle in question, then that torsion angle is considered an outlier. Any bond that is central to one or more torsion angles identified as an outlier by Mogul will be highlighted in the graph. For rings, the root-mean-square deviation (RMSD) between the ring in question and similar rings identified by Mogul is calculated over all ring torsion angles. If the average RMSD is greater than 60 degrees and the minimal RMSD between the ring in question and any Mogul-identified rings is also greater than 60 degrees, then that ring is considered an outlier. The outliers are highlighted in purple. The color gray indicates Mogul did not find sufficient equivalents in the CSD to analyse the geometry.



5.7 Other polymers [i](#)

There are no such residues in this entry.

5.8 Polymer linkage issues [i](#)

There are no chain breaks in this entry.

6 Fit of model and data

6.1 Protein, DNA and RNA chains

In the following table, the column labelled ‘#RSRZ> 2’ contains the number (and percentage) of RSRZ outliers, followed by percent RSRZ outliers for the chain as percentile scores relative to all X-ray entries and entries of similar resolution. The OWAB column contains the minimum, median, 95th percentile and maximum values of the occupancy-weighted average B-factor per residue. The column labelled ‘Q< 0.9’ lists the number of (and percentage) of residues with an average occupancy less than 0.9.

Mol	Chain	Analysed	<RSRZ>	#RSRZ>2	OWAB(Å ²)	Q<0.9
1	A	219/236 (92%)	0.13	17 (7%) 13 14	12, 19, 61, 134	0
1	B	219/236 (92%)	0.57	41 (18%) 1 1	13, 21, 76, 146	0
1	C	220/236 (93%)	0.50	24 (10%) 5 6	13, 25, 90, 156	0
All	All	658/708 (92%)	0.40	82 (12%) 3 4	12, 21, 73, 156	0

All (82) RSRZ outliers are listed below:

Mol	Chain	Res	Type	RSRZ
1	B	9	ILE	12.1
1	C	9	ILE	11.3
1	C	3	PHE	9.4
1	C	1	MET	8.6
1	B	11	VAL	8.5
1	A	11	VAL	8.4
1	A	9	ILE	7.6
1	B	7	GLU	7.5
1	C	11	VAL	6.9
1	A	3	PHE	6.0
1	C	5	LYS	5.7
1	B	224	ASN	5.6
1	C	6	LYS	5.5
1	C	7	GLU	5.4
1	C	10	HIS	5.3
1	B	225	PRO	5.1
1	B	222	VAL	5.1
1	C	8	PRO	4.8
1	C	2	VAL	4.6
1	C	4	HIS	4.6
1	B	10	HIS	4.5
1	B	216	GLU	4.5
1	B	221	TYR	4.5

Continued on next page...

Continued from previous page...

Mol	Chain	Res	Type	RSRZ
1	B	3	PHE	4.5
1	A	1	MET	4.4
1	B	198	TYR	4.2
1	B	1	MET	4.0
1	A	10	HIS	4.0
1	B	208	ASP	3.8
1	B	223	ALA	3.8
1	A	7	GLU	3.7
1	B	195	ALA	3.7
1	B	196	LEU	3.7
1	B	220	LYS	3.6
1	B	217	PRO	3.5
1	B	197	TYR	3.4
1	A	8	PRO	3.4
1	A	111	TRP	3.2
1	A	112	THR	3.2
1	A	6	LYS	3.2
1	B	2	VAL	3.2
1	B	194	VAL	3.2
1	B	8	PRO	3.2
1	C	85	GLN	3.1
1	A	2	VAL	3.0
1	B	5	LYS	3.0
1	C	13	ASN	3.0
1	B	210	ARG	2.9
1	C	111	TRP	2.9
1	C	114	SER	2.9
1	C	225	PRO	2.9
1	B	215	SER	2.9
1	B	212	PRO	2.8
1	C	224	ASN	2.7
1	A	115	TYR	2.7
1	C	52	ALA	2.7
1	C	110	ALA	2.7
1	B	115	TYR	2.7
1	A	110	ALA	2.6
1	B	219	PHE	2.6
1	C	208	ASP	2.6
1	C	112	THR	2.6
1	B	113	ALA	2.6
1	B	111	TRP	2.6
1	B	199	ASN	2.6

Continued on next page...

Continued from previous page...

Mol	Chain	Res	Type	RSRZ
1	B	114	SER	2.5
1	B	200	LEU	2.5
1	B	213	TRP	2.5
1	B	13	ASN	2.4
1	B	209	GLU	2.4
1	C	115	TYR	2.4
1	A	13	ASN	2.4
1	B	112	THR	2.4
1	A	5	LYS	2.3
1	A	113	ALA	2.3
1	C	222	VAL	2.3
1	B	110	ALA	2.2
1	B	211	GLY	2.2
1	C	202	SER	2.2
1	A	224	ASN	2.2
1	B	214	ASN	2.2
1	B	4	HIS	2.1

6.2 Non-standard residues in protein, DNA, RNA chains ⓘ

There are no non-standard protein/DNA/RNA residues in this entry.

6.3 Carbohydrates ⓘ

There are no carbohydrates in this entry.

6.4 Ligands ⓘ

In the following table, the Atoms column lists the number of modelled atoms in the group and the number defined in the chemical component dictionary. The B-factors column lists the minimum, median, 95th percentile and maximum values of B factors of atoms in the group. The column labelled 'Q< 0.9' lists the number of atoms with occupancy less than 0.9.

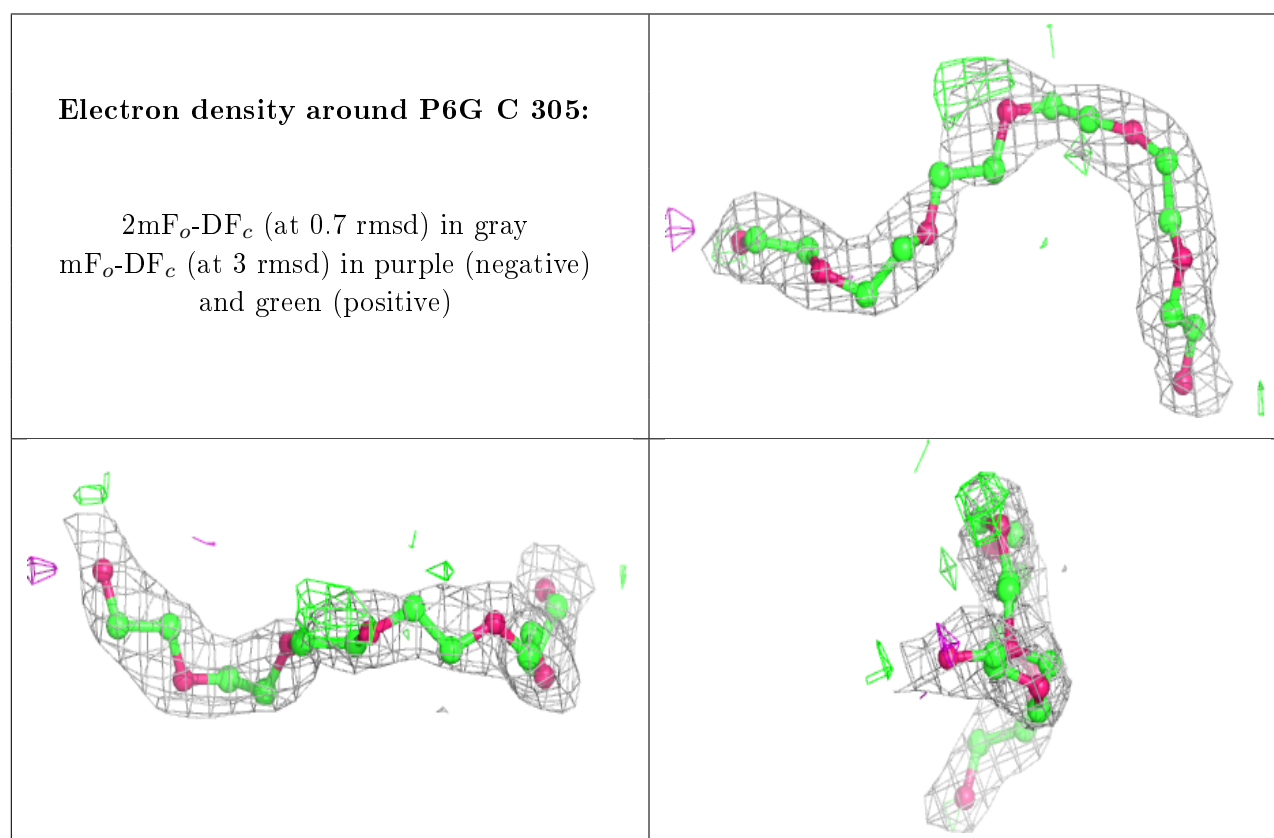
Mol	Type	Chain	Res	Atoms	RSCC	RSR	B-factors(Å ²)	Q<0.9
4	PGE	C	304	10/10	0.78	0.17	56,80,98,105	0
4	PGE	A	305	10/10	0.86	0.14	51,67,80,92	0
6	PEG	B	305	7/7	0.87	0.23	43,47,51,54	0
7	P6G	C	305	19/19	0.92	0.14	29,38,53,53	0
5	PG4	A	306	13/13	0.93	0.12	24,34,46,50	0
3	CA	C	303	1/1	0.94	0.07	46,46,46,46	0

Continued on next page...

Continued from previous page...

Mol	Type	Chain	Res	Atoms	RSCC	RSR	B-factors(\AA^2)	Q<0.9
3	CA	A	303	1/1	0.99	0.05	22,22,22,22	0
3	CA	B	304	1/1	0.99	0.05	22,22,22,22	0
2	MN	C	301	1/1	1.00	0.08	19,19,19,19	0
3	CA	B	303	1/1	1.00	0.14	15,15,15,15	0
2	MN	A	301	1/1	1.00	0.05	14,14,14,14	0
2	MN	C	302	1/1	1.00	0.08	19,19,19,19	0
2	MN	B	302	1/1	1.00	0.06	17,17,17,17	0
2	MN	B	301	1/1	1.00	0.06	17,17,17,17	0
2	MN	A	302	1/1	1.00	0.09	15,15,15,15	0
3	CA	A	304	1/1	1.00	0.08	14,14,14,14	0

The following is a graphical depiction of the model fit to experimental electron density of all instances of the Ligand of Interest. In addition, ligands with molecular weight > 250 and outliers as shown on the geometry validation Tables will also be included. Each fit is shown from different orientation to approximate a three-dimensional view.



6.5 Other polymers ⓘ

There are no such residues in this entry.