



# Full wwPDB X-ray Structure Validation Report ⓘ

May 13, 2020 – 04:48 pm BST

PDB ID : 4R5H  
Title : Crystal structure of sp-Aspartate-Semialdehyde-Dehydrogenase with Nicotinamide-Adenine-Dinucleotide-Phosphate and 3-carboxy-propenyl-phthalic acid  
Authors : Pavlovsky, A.G.; Thangavelu, B.; Bhansali, P.; Viola, R.E.  
Deposited on : 2014-08-21  
Resolution : 1.80 Å(reported)

This is a Full wwPDB X-ray Structure Validation Report for a publicly released PDB entry.

We welcome your comments at [validation@mail.wwpdb.org](mailto:validation@mail.wwpdb.org)

A user guide is available at

<https://www.wwpdb.org/validation/2017/XrayValidationReportHelp>

with specific help available everywhere you see the ⓘ symbol.

---

The following versions of software and data (see [references ⓘ](#)) were used in the production of this report:

MolProbity : 4.02b-467  
Mogul : 1.8.5 (274361), CSD as541be (2020)  
Xtriage (Phenix) : 1.13  
EDS : 2.11  
buster-report : 1.1.7 (2018)  
Percentile statistics : 20191225.v01 (using entries in the PDB archive December 25th 2019)  
Refmac : 5.8.0158  
CCP4 : 7.0.044 (Gargrove)  
Ideal geometry (proteins) : Engh & Huber (2001)  
Ideal geometry (DNA, RNA) : Parkinson et al. (1996)  
Validation Pipeline (wwPDB-VP) : 2.11

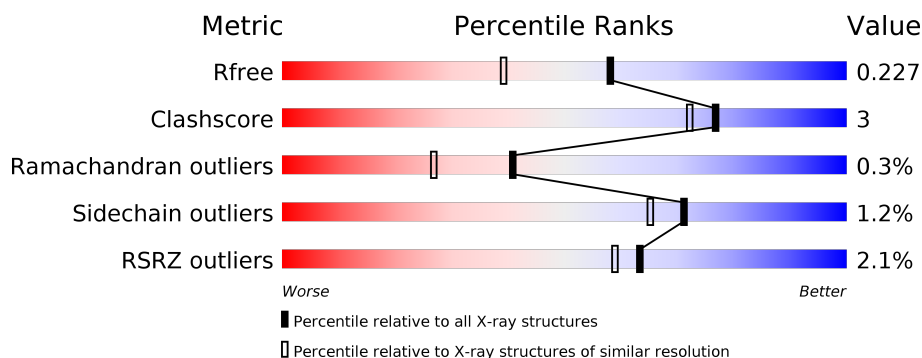
# 1 Overall quality at a glance

The following experimental techniques were used to determine the structure:

## *X-RAY DIFFRACTION*

The reported resolution of this entry is 1.80 Å.

Percentile scores (ranging between 0-100) for global validation metrics of the entry are shown in the following graphic. The table shows the number of entries on which the scores are based.



Metric	Whole archive (#Entries)	Similar resolution (#Entries, resolution range(Å))
$R_{free}$	130704	5950 (1.80-1.80)
Clashscore	141614	6793 (1.80-1.80)
Ramachandran outliers	138981	6697 (1.80-1.80)
Sidechain outliers	138945	6696 (1.80-1.80)
RSRZ outliers	127900	5850 (1.80-1.80)

The table below summarises the geometric issues observed across the polymeric chains and their fit to the electron density. The red, orange, yellow and green segments on the lower bar indicate the fraction of residues that contain outliers for  $\geq 3$ , 2, 1 and 0 types of geometric quality criteria respectively. A grey segment represents the fraction of residues that are not modelled. The numeric value for each fraction is indicated below the corresponding segment, with a dot representing fractions  $\leq 5\%$ . The upper red bar (where present) indicates the fraction of residues that have poor fit to the electron density. The numeric value is given above the bar.

Mol	Chain	Length	Quality of chain
1	A	366	<div> <div>2%</div> <div> <div></div> <div>93%</div> <div>5%</div> </div> </div>
1	B	366	<div> <div>2%</div> <div> <div></div> <div>90%</div> <div>7%</div> </div> </div>

## 2 Entry composition

There are 6 unique types of molecules in this entry. The entry contains 6249 atoms, of which 0 are hydrogens and 0 are deuteriums.

In the tables below, the ZeroOcc column contains the number of atoms modelled with zero occupancy, the AltConf column contains the number of residues with at least one atom in alternate conformation and the Trace column contains the number of residues modelled with at most 2 atoms.

- Molecule 1 is a protein called Aspartate-semialdehyde dehydrogenase.

Mol	Chain	Residues	Atoms					ZeroOcc	AltConf	Trace
1	A	359	Total	C	N	O	S	0	3	0
			2749	1741	461	532	15			
1	B	357	Total	C	N	O	S	0	3	0
			2738	1731	462	532	13			

There are 16 discrepancies between the modelled and reference sequences:

Chain	Residue	Modelled	Actual	Comment	Reference
A	359	LEU	-	EXPRESSION TAG	UNP A5MTN0
A	360	GLU	-	EXPRESSION TAG	UNP A5MTN0
A	361	HIS	-	EXPRESSION TAG	UNP A5MTN0
A	362	HIS	-	EXPRESSION TAG	UNP A5MTN0
A	363	HIS	-	EXPRESSION TAG	UNP A5MTN0
A	364	HIS	-	EXPRESSION TAG	UNP A5MTN0
A	365	HIS	-	EXPRESSION TAG	UNP A5MTN0
A	366	HIS	-	EXPRESSION TAG	UNP A5MTN0
B	359	LEU	-	EXPRESSION TAG	UNP A5MTN0
B	360	GLU	-	EXPRESSION TAG	UNP A5MTN0
B	361	HIS	-	EXPRESSION TAG	UNP A5MTN0
B	362	HIS	-	EXPRESSION TAG	UNP A5MTN0
B	363	HIS	-	EXPRESSION TAG	UNP A5MTN0
B	364	HIS	-	EXPRESSION TAG	UNP A5MTN0
B	365	HIS	-	EXPRESSION TAG	UNP A5MTN0
B	366	HIS	-	EXPRESSION TAG	UNP A5MTN0

- Molecule 2 is 1,2-ETHANEDIOL (three-letter code: EDO) (formula: C<sub>2</sub>H<sub>6</sub>O<sub>2</sub>).

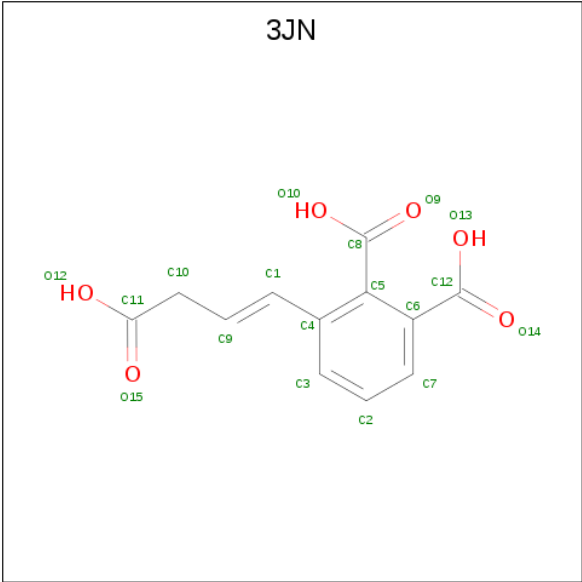


Mol	Chain	Residues	Atoms	ZeroOcc	AltConf
2	A	1	Total C O 4 2 2	0	0
2	A	1	Total C O 4 2 2	0	0
2	A	1	Total C O 4 2 2	0	0
2	A	1	Total C O 4 2 2	0	0
2	B	1	Total C O 4 2 2	0	0
2	B	1	Total C O 4 2 2	0	0
2	B	1	Total C O 4 2 2	0	0
2	B	1	Total C O 4 2 2	0	0

- Molecule 3 is SODIUM ION (three-letter code: NA) (formula: Na).

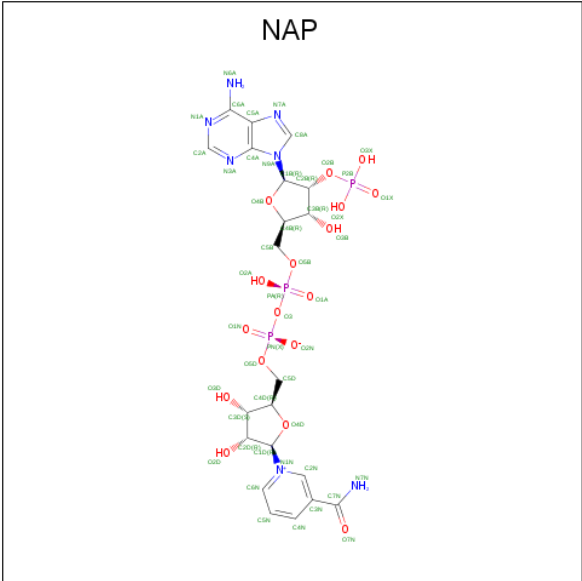
Mol	Chain	Residues	Atoms	ZeroOcc	AltConf
3	A	2	Total Na 2 2	0	0

- Molecule 4 is 3-[(1E)-3-carboxyprop-1-en-1-yl]benzene-1,2-dicarboxylic acid (three-letter code: 3JN) (formula: C<sub>12</sub>H<sub>10</sub>O<sub>6</sub>).



Mol	Chain	Residues	Atoms			ZeroOcc	AltConf
4	A	1	Total	C	O	0	0
			18	12	6		

- Molecule 5 is NADP NICOTINAMIDE-ADENINE-DINUCLEOTIDE PHOSPHATE (three-letter code: NAP) (formula: C<sub>21</sub>H<sub>28</sub>N<sub>7</sub>O<sub>17</sub>P<sub>3</sub>).



Mol	Chain	Residues	Atoms					ZeroOcc	AltConf
5	A	1	Total	C	N	O	P	0	0
			48	21	7	17	3		
5	B	1	Total	C	N	O	P	0	1
			96	42	14	34	6		

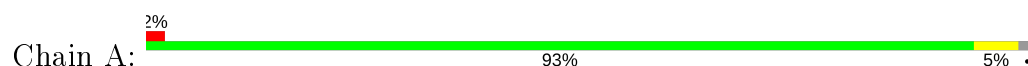
- Molecule 6 is water.

Mol	Chain	Residues	Atoms		ZeroOcc	AltConf
6	A	310	Total 310	O 310	0	0
6	B	256	Total 256	O 256	0	0

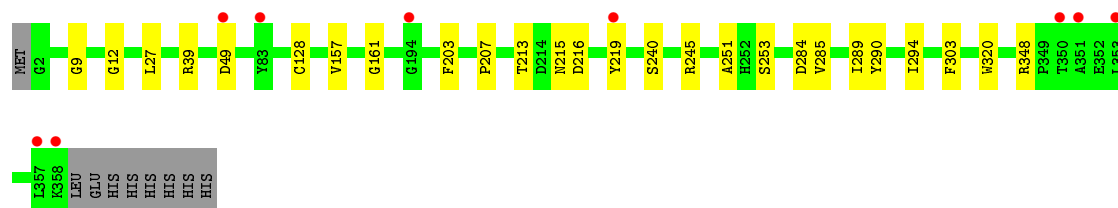
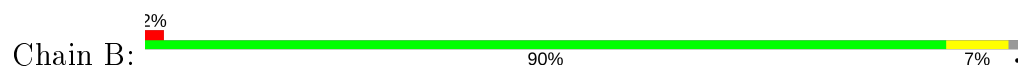
### 3 Residue-property plots [i](#)

These plots are drawn for all protein, RNA and DNA chains in the entry. The first graphic for a chain summarises the proportions of the various outlier classes displayed in the second graphic. The second graphic shows the sequence view annotated by issues in geometry and electron density. Residues are color-coded according to the number of geometric quality criteria for which they contain at least one outlier: green = 0, yellow = 1, orange = 2 and red = 3 or more. A red dot above a residue indicates a poor fit to the electron density ( $RSRZ > 2$ ). Stretches of 2 or more consecutive residues without any outlier are shown as a green connector. Residues present in the sample, but not in the model, are shown in grey.

- Molecule 1: Aspartate-semialdehyde dehydrogenase



- Molecule 1: Aspartate-semialdehyde dehydrogenase



## 4 Data and refinement statistics

Property	Value	Source
Space group	P 1 21 1	Depositor
Cell constants a, b, c, $\alpha$ , $\beta$ , $\gamma$	59.62Å 97.56Å 64.56Å 90.00° 100.39° 90.00°	Depositor
Resolution (Å)	63.50 – 1.80 28.44 – 1.80	Depositor EDS
% Data completeness (in resolution range)	95.5 (63.50-1.80) 95.5 (28.44-1.80)	Depositor EDS
$R_{merge}$	(Not available)	Depositor
$R_{sym}$	0.10	Depositor
$\langle I/\sigma(I) \rangle$ <sup>1</sup>	3.02 (at 1.80Å)	Xtriage
Refinement program	REFMAC 5.8.0049	Depositor
R, $R_{free}$	0.183 , 0.213 0.192 , 0.227	Depositor DCC
$R_{free}$ test set	3213 reflections (5.02%)	wwPDB-VP
Wilson B-factor (Å <sup>2</sup> )	23.9	Xtriage
Anisotropy	0.015	Xtriage
Bulk solvent $k_{sol}$ (e/Å <sup>3</sup> ), $B_{sol}$ (Å <sup>2</sup> )	0.37 , 47.8	EDS
L-test for twinning <sup>2</sup>	$\langle  L  \rangle = 0.46$ , $\langle L^2 \rangle = 0.29$	Xtriage
Estimated twinning fraction	No twinning to report.	Xtriage
$F_o, F_c$ correlation	0.95	EDS
Total number of atoms	6249	wwPDB-VP
Average B, all atoms (Å <sup>2</sup> )	29.0	wwPDB-VP

Xtriage's analysis on translational NCS is as follows: *The largest off-origin peak in the Patterson function is 4.70% of the height of the origin peak. No significant pseudotranslation is detected.*

<sup>1</sup>Intensities estimated from amplitudes.

<sup>2</sup>Theoretical values of  $\langle |L| \rangle$ ,  $\langle L^2 \rangle$  for acentric reflections are 0.5, 0.333 respectively for untwinned datasets, and 0.375, 0.2 for perfectly twinned datasets.



## 5 Model quality [i](#)

### 5.1 Standard geometry [i](#)

Bond lengths and bond angles in the following residue types are not validated in this section: NA, NAP, 3JN, EDO

The Z score for a bond length (or angle) is the number of standard deviations the observed value is removed from the expected value. A bond length (or angle) with  $|Z| > 5$  is considered an outlier worth inspection. RMSZ is the root-mean-square of all Z scores of the bond lengths (or angles).

Mol	Chain	Bond lengths		Bond angles	
		RMSZ	$\# Z  > 5$	RMSZ	$\# Z  > 5$
1	A	0.49	0/2807	0.66	0/3813
1	B	0.47	0/2796	0.66	1/3797 (0.0%)
All	All	0.48	0/5603	0.66	1/7610 (0.0%)

Chiral center outliers are detected by calculating the chiral volume of a chiral center and verifying if the center is modelled as a planar moiety or with the opposite hand. A planarity outlier is detected by checking planarity of atoms in a peptide group, atoms in a mainchain group or atoms of a sidechain that are expected to be planar.

Mol	Chain	#Chirality outliers	#Planarity outliers
1	A	0	1

There are no bond length outliers.

All (1) bond angle outliers are listed below:

Mol	Chain	Res	Type	Atoms	Z	Observed( $^{\circ}$ )	Ideal( $^{\circ}$ )
1	B	27	LEU	CA-CB-CG	5.04	126.88	115.30

There are no chirality outliers.

All (1) planarity outliers are listed below:

Mol	Chain	Res	Type	Group
1	A	46	LYS	Peptide

### 5.2 Too-close contacts [i](#)

In the following table, the Non-H and H(model) columns list the number of non-hydrogen atoms and hydrogen atoms in the chain respectively. The H(added) column lists the number of hydrogen atoms added and optimized by MolProbity. The Clashes column lists the number of clashes within

the asymmetric unit, whereas Symm-Clashes lists symmetry related clashes.

Mol	Chain	Non-H	H(model)	H(added)	Clashes	Symm-Clashes
1	A	2749	0	2766	16	0
1	B	2738	0	2753	18	0
2	A	16	0	24	2	0
2	B	16	0	24	2	0
3	A	2	0	0	0	0
4	A	18	0	7	0	0
5	A	48	0	25	1	0
5	B	96	0	50	5	0
6	A	310	0	0	10	0
6	B	256	0	0	5	0
All	All	6249	0	5649	34	0

The all-atom clashscore is defined as the number of clashes found per 1000 atoms (including hydrogen atoms). The all-atom clashscore for this structure is 3.

All (34) close contacts within the same asymmetric unit are listed below, sorted by their clash magnitude.

Atom-1	Atom-2	Interatomic distance (Å)	Clash overlap (Å)
1:A:125:CYS:SG	6:A:679:HOH:O	2.01	1.19
1:A:125:CYS:CB	6:A:679:HOH:O	1.89	1.18
1:A:125:CYS:HB2	6:A:679:HOH:O	1.52	0.97
1:A:88:GLY:O	6:A:801:HOH:O	1.99	0.79
6:A:805:HOH:O	1:B:203:PHE:HB3	1.82	0.77
1:B:240:SER:HA	6:B:728:HOH:O	1.87	0.75
1:A:128:CYS:N	5:A:408:NAP:O7N	2.30	0.64
1:B:128:CYS:N	5:B:405[B]:NAP:O7N	2.32	0.62
1:A:72:ALA:HB3	6:A:783:HOH:O	1.99	0.62
6:A:797:HOH:O	1:B:285:VAL:HG11	2.01	0.61
1:B:12:GLY:CA	6:B:748:HOH:O	2.50	0.58
1:B:9:GLY:O	6:B:748:HOH:O	2.18	0.57
1:B:12:GLY:N	6:B:748:HOH:O	2.35	0.57
1:B:303:PHE:CE1	2:B:403:EDO:H11	2.42	0.54
1:A:303:PHE:CE1	2:A:404:EDO:H11	2.42	0.54
1:A:358:LYS:NZ	6:A:697:HOH:O	2.40	0.54
1:A:94:ASN:HD21	1:A:330:ALA:HB1	1.77	0.48
1:A:154:TYR:HB2	1:A:253:SER:HB2	1.96	0.47
5:B:405[B]:NAP:H4N	6:B:610:HOH:O	2.14	0.47
1:A:253:SER:HB3	1:A:320:TRP:CZ2	2.50	0.46
1:B:303:PHE:CZ	2:B:403:EDO:H11	2.50	0.46
1:B:215:ASN:O	1:B:216:ASP:HB2	2.16	0.45

*Continued on next page...*

Continued from previous page...

Atom-1	Atom-2	Interatomic distance (Å)	Clash overlap (Å)
1:B:157:VAL:HA	1:B:245:ARG:HD2	1.98	0.45
1:A:125:CYS:N	6:A:802:HOH:O	2.49	0.44
1:B:39:ARG:HD3	5:B:405[A]:NAP:C7N	2.48	0.44
1:B:213:THR:HG22	1:B:219:TYR:CE1	2.52	0.44
1:A:183[B]:CYS:SG	1:B:294:ILE:O	2.75	0.43
5:B:405[A]:NAP:O3	5:B:405[A]:NAP:H4D	2.18	0.43
1:A:303:PHE:CD2	2:A:404:EDO:H21	2.53	0.43
1:B:253:SER:HB3	1:B:320:TRP:CZ2	2.54	0.43
1:A:320:TRP:CD1	1:B:207:PRO:HG3	2.54	0.42
1:A:309:LYS:HD3	6:A:637:HOH:O	2.19	0.42
1:B:284:ASP:HB3	1:B:289:ILE:HB	2.01	0.42
1:B:161:GLY:HA2	5:B:405[B]:NAP:O1N	2.20	0.41

There are no symmetry-related clashes.

## 5.3 Torsion angles ⓘ

### 5.3.1 Protein backbone ⓘ

In the following table, the Percentiles column shows the percent Ramachandran outliers of the chain as a percentile score with respect to all X-ray entries followed by that with respect to entries of similar resolution.

The Analysed column shows the number of residues for which the backbone conformation was analysed, and the total number of residues.

Mol	Chain	Analysed	Favoured	Allowed	Outliers	Percentiles	
1	A	360/366 (98%)	344 (96%)	15 (4%)	1 (0%)	41	27
1	B	358/366 (98%)	343 (96%)	14 (4%)	1 (0%)	41	27
All	All	718/732 (98%)	687 (96%)	29 (4%)	2 (0%)	41	27

All (2) Ramachandran outliers are listed below:

Mol	Chain	Res	Type
1	B	251	ALA
1	A	251	ALA

### 5.3.2 Protein sidechains ⓘ

In the following table, the Percentiles column shows the percent sidechain outliers of the chain as a percentile score with respect to all X-ray entries followed by that with respect to entries of similar resolution.

The Analysed column shows the number of residues for which the sidechain conformation was analysed, and the total number of residues.

Mol	Chain	Analysed	Rotameric	Outliers	Percentiles	
1	A	297/302 (98%)	293 (99%)	4 (1%)	69	62
1	B	296/302 (98%)	293 (99%)	3 (1%)	76	71
All	All	593/604 (98%)	586 (99%)	7 (1%)	71	65

All (7) residues with a non-rotameric sidechain are listed below:

Mol	Chain	Res	Type
1	A	27	LEU
1	A	290	TYR
1	A	309	LYS
1	A	348	ARG
1	B	49	ASP
1	B	290	TYR
1	B	348	ARG

Some sidechains can be flipped to improve hydrogen bonding and reduce clashes. All (1) such sidechains are listed below:

Mol	Chain	Res	Type
1	A	94	ASN

### 5.3.3 RNA ⓘ

There are no RNA molecules in this entry.

## 5.4 Non-standard residues in protein, DNA, RNA chains ⓘ

There are no non-standard protein/DNA/RNA residues in this entry.

## 5.5 Carbohydrates ⓘ

There are no carbohydrates in this entry.

## 5.6 Ligand geometry

Of 14 ligands modelled in this entry, 2 are monoatomic - leaving 12 for Mogul analysis.

In the following table, the Counts columns list the number of bonds (or angles) for which Mogul statistics could be retrieved, the number of bonds (or angles) that are observed in the model and the number of bonds (or angles) that are defined in the Chemical Component Dictionary. The Link column lists molecule types, if any, to which the group is linked. The Z score for a bond length (or angle) is the number of standard deviations the observed value is removed from the expected value. A bond length (or angle) with  $|Z| > 2$  is considered an outlier worth inspection. RMSZ is the root-mean-square of all Z scores of the bond lengths (or angles).

Mol	Type	Chain	Res	Link	Bond lengths			Bond angles		
					Counts	RMSZ	# Z  > 2	Counts	RMSZ	# Z  > 2
2	EDO	B	402	-	3,3,3	0.42	0	2,2,2	0.25	0
2	EDO	A	402	-	3,3,3	0.39	0	2,2,2	0.46	0
5	NAP	B	405[B]	-	45,52,52	0.94	1 (2%)	56,80,80	1.24	9 (16%)
2	EDO	B	403	-	3,3,3	0.60	0	2,2,2	0.55	0
2	EDO	A	401	-	3,3,3	0.43	0	2,2,2	0.22	0
2	EDO	A	404	-	3,3,3	0.57	0	2,2,2	0.51	0
5	NAP	A	408	-	45,52,52	0.82	2 (4%)	56,80,80	1.38	9 (16%)
2	EDO	B	404	-	3,3,3	0.58	0	2,2,2	0.14	0
4	3JN	A	407	-	11,18,18	1.66	2 (18%)	12,24,24	1.40	2 (16%)
2	EDO	A	403	-	3,3,3	0.56	0	2,2,2	0.13	0
5	NAP	B	405[A]	-	45,52,52	0.88	2 (4%)	56,80,80	1.25	5 (8%)
2	EDO	B	401	-	3,3,3	0.49	0	2,2,2	0.07	0

In the following table, the Chirals column lists the number of chiral outliers, the number of chiral centers analysed, the number of these observed in the model and the number defined in the Chemical Component Dictionary. Similar counts are reported in the Torsion and Rings columns. '-' means no outliers of that kind were identified.

Mol	Type	Chain	Res	Link	Chirals	Torsions	Rings
2	EDO	B	402	-	-	0/1/1/1	-
2	EDO	A	402	-	-	1/1/1/1	-
5	NAP	B	405[B]	-	-	6/31/67/67	0/5/5/5
2	EDO	B	403	-	-	1/1/1/1	-
2	EDO	A	401	-	-	0/1/1/1	-
2	EDO	A	404	-	-	0/1/1/1	-
5	NAP	A	408	-	-	7/31/67/67	0/5/5/5
2	EDO	B	404	-	-	0/1/1/1	-
4	3JN	A	407	-	-	1/4/14/14	0/1/1/1
2	EDO	A	403	-	-	0/1/1/1	-
5	NAP	B	405[A]	-	-	12/31/67/67	0/5/5/5

*Continued on next page...*

*Continued from previous page...*

Mol	Type	Chain	Res	Link	Chirals	Torsions	Rings
2	EDO	B	401	-	-	0/1/1/1	-

All (7) bond length outliers are listed below:

Mol	Chain	Res	Type	Atoms	Z	Observed(Å)	Ideal(Å)
4	A	407	3JN	C5-C8	4.41	1.51	1.47
4	A	407	3JN	C6-C12	2.92	1.50	1.47
5	B	405[A]	NAP	C5A-C4A	2.57	1.47	1.40
5	B	405[B]	NAP	C5A-C4A	2.43	1.47	1.40
5	A	408	NAP	C5A-C4A	2.40	1.47	1.40
5	B	405[A]	NAP	C2A-N3A	2.01	1.35	1.32
5	A	408	NAP	P2B-O2B	2.00	1.63	1.59

All (25) bond angle outliers are listed below:

Mol	Chain	Res	Type	Atoms	Z	Observed(°)	Ideal(°)
5	B	405[B]	NAP	N3A-C2A-N1A	-3.64	122.98	128.68
5	A	408	NAP	N3A-C2A-N1A	-3.60	123.06	128.68
5	B	405[A]	NAP	N3A-C2A-N1A	-3.58	123.08	128.68
5	A	408	NAP	C3N-C7N-N7N	3.43	121.87	117.75
5	A	408	NAP	O7N-C7N-C3N	-3.07	115.95	119.63
5	B	405[B]	NAP	C3N-C7N-N7N	2.94	121.27	117.75
4	A	407	3JN	C4-C1-C9	-2.80	119.47	125.52
5	B	405[A]	NAP	C6N-N1N-C2N	-2.75	119.47	121.97
5	B	405[B]	NAP	C4A-C5A-N7A	-2.66	106.62	109.40
5	A	408	NAP	C4A-C5A-N7A	-2.62	106.67	109.40
5	B	405[A]	NAP	O4D-C1D-C2D	-2.61	103.11	106.93
5	B	405[B]	NAP	PN-O3-PA	-2.61	123.87	132.83
5	A	408	NAP	C3D-C2D-C1D	2.59	104.88	100.98
5	A	408	NAP	C2A-N1A-C6A	2.58	123.17	118.75
5	A	408	NAP	C1B-N9A-C4A	-2.57	122.12	126.64
5	B	405[B]	NAP	O7N-C7N-C3N	-2.52	116.62	119.63
5	B	405[A]	NAP	C4A-C5A-N7A	-2.48	106.81	109.40
5	A	408	NAP	O2A-PA-O1A	2.40	124.13	112.24
5	B	405[B]	NAP	O3X-P2B-O2X	2.39	116.75	107.64
5	B	405[B]	NAP	C3D-C2D-C1D	2.31	104.46	100.98
4	A	407	3JN	C7-C6-C12	-2.30	116.78	120.20
5	B	405[A]	NAP	C2A-N1A-C6A	2.20	122.52	118.75
5	A	408	NAP	O3X-P2B-O2X	2.11	115.71	107.64
5	B	405[B]	NAP	O2N-PN-O1N	2.08	122.53	112.24
5	B	405[B]	NAP	C2A-N1A-C6A	2.00	122.18	118.75

There are no chirality outliers.

All (28) torsion outliers are listed below:

Mol	Chain	Res	Type	Atoms
5	B	405[A]	NAP	C4D-C5D-O5D-PN
5	B	405[A]	NAP	C3D-C4D-C5D-O5D
5	B	405[A]	NAP	C2D-C1D-N1N-C2N
5	B	405[A]	NAP	C2D-C1D-N1N-C6N
5	B	405[B]	NAP	C2N-C3N-C7N-O7N
5	A	408	NAP	C2N-C3N-C7N-O7N
5	A	408	NAP	C2N-C3N-C7N-N7N
5	A	408	NAP	C4N-C3N-C7N-N7N
5	A	408	NAP	C4N-C3N-C7N-O7N
5	B	405[B]	NAP	C2N-C3N-C7N-N7N
5	B	405[B]	NAP	C4N-C3N-C7N-O7N
5	B	405[B]	NAP	C4N-C3N-C7N-N7N
5	B	405[A]	NAP	C4N-C3N-C7N-N7N
5	B	405[A]	NAP	C4N-C3N-C7N-O7N
5	B	405[A]	NAP	O4D-C4D-C5D-O5D
5	B	405[A]	NAP	C2N-C3N-C7N-O7N
5	B	405[A]	NAP	C2N-C3N-C7N-N7N
5	B	405[B]	NAP	O4B-C4B-C5B-O5B
5	B	405[A]	NAP	O4B-C4B-C5B-O5B
5	B	405[A]	NAP	C2B-O2B-P2B-O1X
4	A	407	3JN	C11-C10-C9-C1
2	A	402	EDO	O1-C1-C2-O2
2	B	403	EDO	O1-C1-C2-O2
5	B	405[B]	NAP	C3B-C4B-C5B-O5B
5	B	405[A]	NAP	C3B-C4B-C5B-O5B
5	A	408	NAP	C2B-O2B-P2B-O1X
5	A	408	NAP	C2B-O2B-P2B-O2X
5	A	408	NAP	O4B-C4B-C5B-O5B

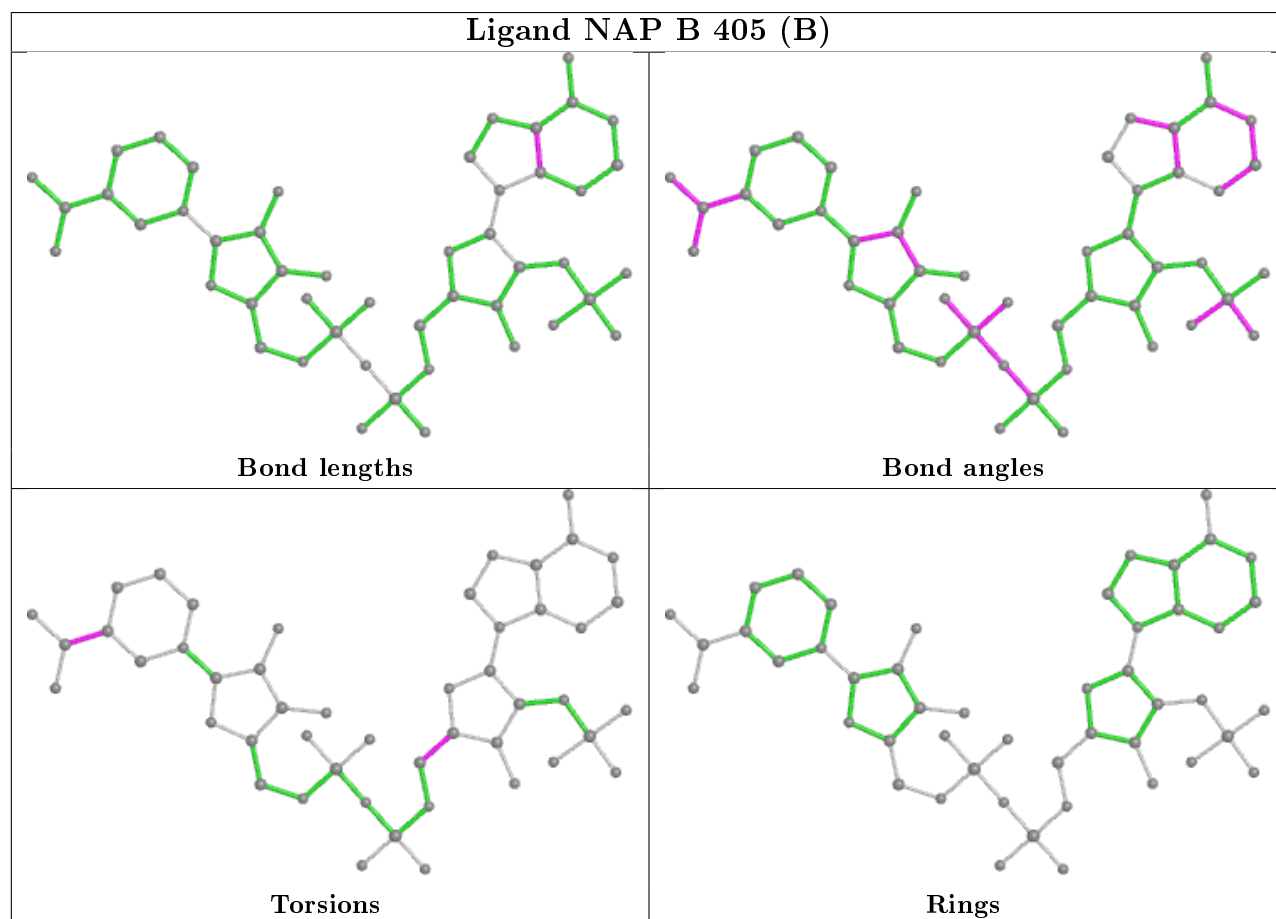
There are no ring outliers.

5 monomers are involved in 10 short contacts:

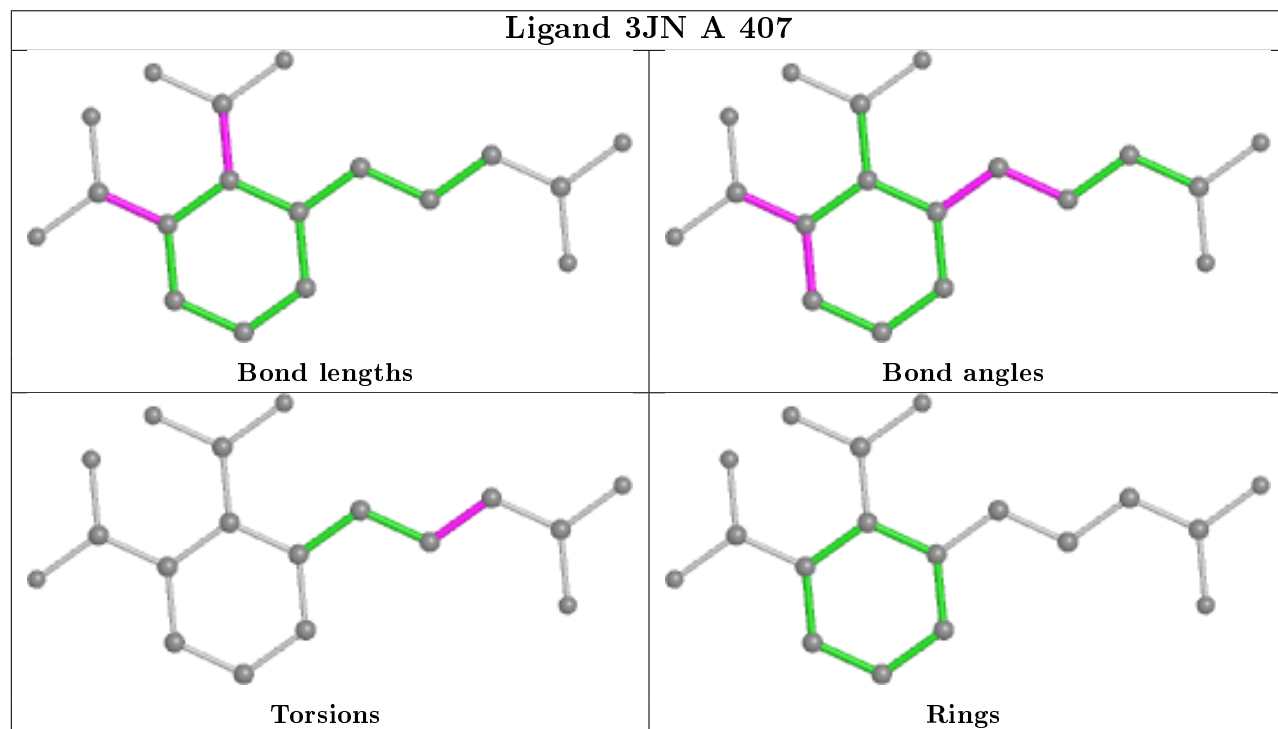
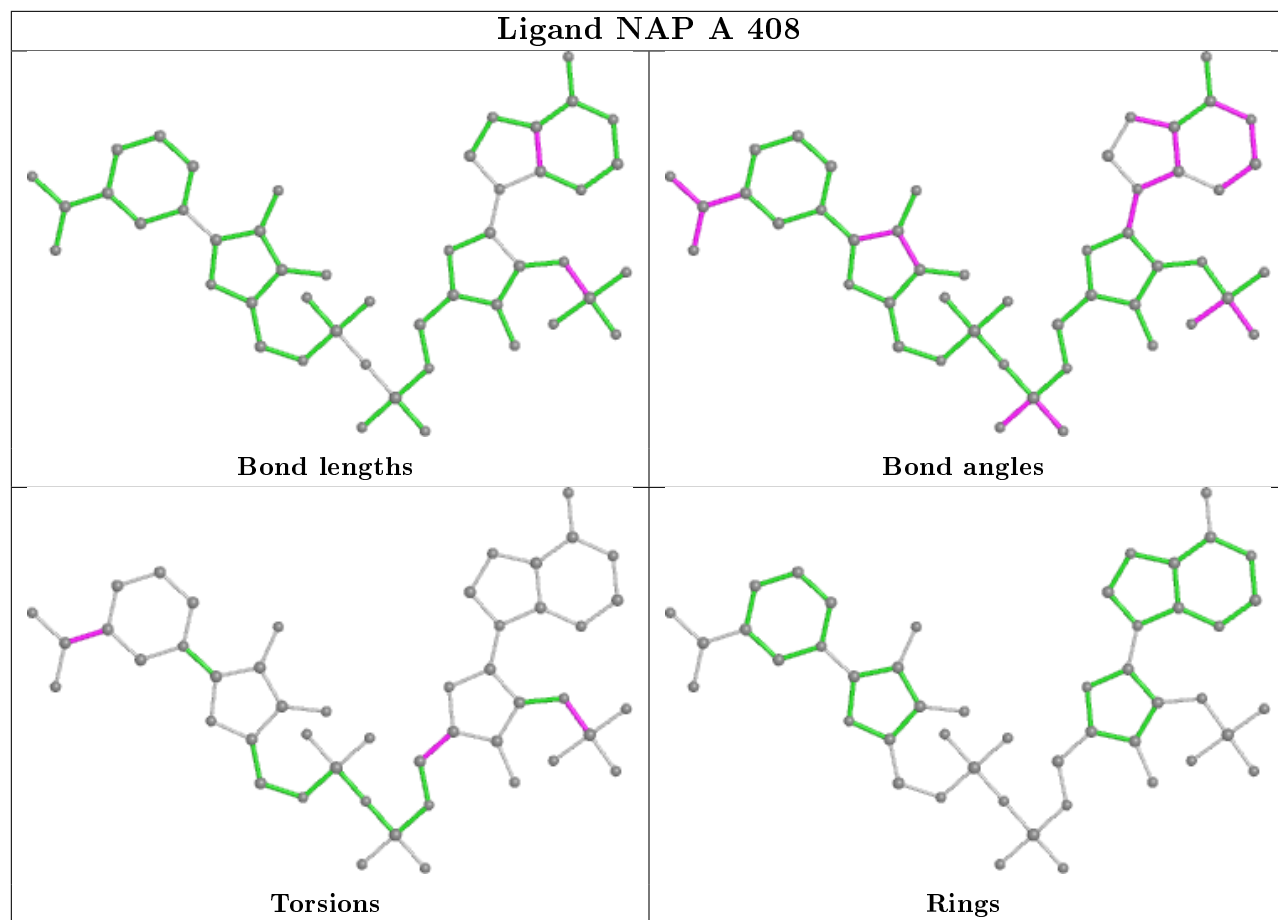
Mol	Chain	Res	Type	Clashes	Symm-Clashes
5	B	405[B]	NAP	3	0
2	B	403	EDO	2	0
2	A	404	EDO	2	0
5	A	408	NAP	1	0
5	B	405[A]	NAP	2	0

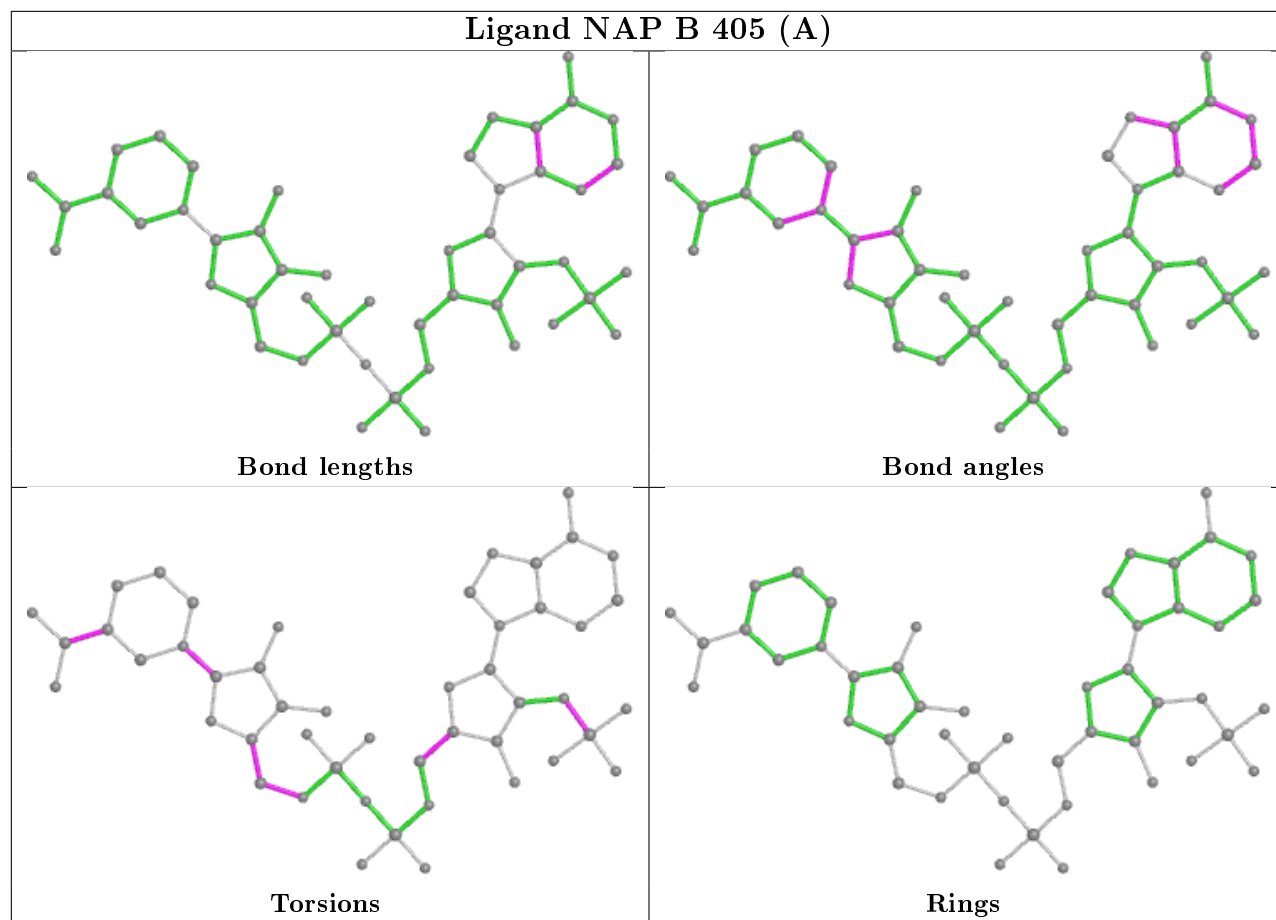
The following is a two-dimensional graphical depiction of Mogul quality analysis of bond lengths,

bond angles, torsion angles, and ring geometry for all instances of the Ligand of Interest. In addition, ligands with molecular weight > 250 and outliers as shown on the validation Tables will also be included. For torsion angles, if less than 5% of the Mogul distribution of torsion angles is within 10 degrees of the torsion angle in question, then that torsion angle is considered an outlier. Any bond that is central to one or more torsion angles identified as an outlier by Mogul will be highlighted in the graph. For rings, the root-mean-square deviation (RMSD) between the ring in question and similar rings identified by Mogul is calculated over all ring torsion angles. If the average RMSD is greater than 60 degrees and the minimal RMSD between the ring in question and any Mogul-identified rings is also greater than 60 degrees, then that ring is considered an outlier. The outliers are highlighted in purple. The color gray indicates Mogul did not find sufficient equivalents in the CSD to analyse the geometry.









## 5.7 Other polymers [i](#)

There are no such residues in this entry.

## 5.8 Polymer linkage issues [i](#)

There are no chain breaks in this entry.

## 6 Fit of model and data [i](#)

### 6.1 Protein, DNA and RNA chains [i](#)

In the following table, the column labelled ‘#RSRZ> 2’ contains the number (and percentage) of RSRZ outliers, followed by percent RSRZ outliers for the chain as percentile scores relative to all X-ray entries and entries of similar resolution. The OWAB column contains the minimum, median, 95<sup>th</sup> percentile and maximum values of the occupancy-weighted average B-factor per residue. The column labelled ‘Q< 0.9’ lists the number of (and percentage) of residues with an average occupancy less than 0.9.

Mol	Chain	Analysed	<RSRZ>	#RSRZ>2	OWAB(Å <sup>2</sup> )	Q<0.9
1	A	359/366 (98%)	-0.08	6 (1%) 70 66	17, 25, 39, 58	0
1	B	357/366 (97%)	-0.06	9 (2%) 57 52	18, 27, 46, 69	0
All	All	716/732 (97%)	-0.07	15 (2%) 63 59	17, 26, 42, 69	0

All (15) RSRZ outliers are listed below:

Mol	Chain	Res	Type	RSRZ
1	B	353	LEU	3.0
1	B	358	LYS	2.9
1	B	49	ASP	2.9
1	A	49	ASP	2.8
1	A	219	TYR	2.7
1	B	351	ALA	2.6
1	B	350	THR	2.5
1	B	194	GLY	2.4
1	B	357	LEU	2.3
1	A	194	GLY	2.1
1	A	50	GLN	2.1
1	A	154	TYR	2.1
1	B	83	TYR	2.1
1	B	219	TYR	2.1
1	A	360	GLU	2.0

### 6.2 Non-standard residues in protein, DNA, RNA chains [i](#)

There are no non-standard protein/DNA/RNA residues in this entry.

### 6.3 Carbohydrates [i](#)

There are no carbohydrates in this entry.

## 6.4 Ligands ⓘ

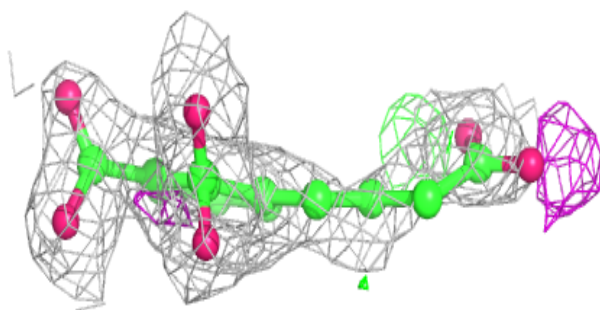
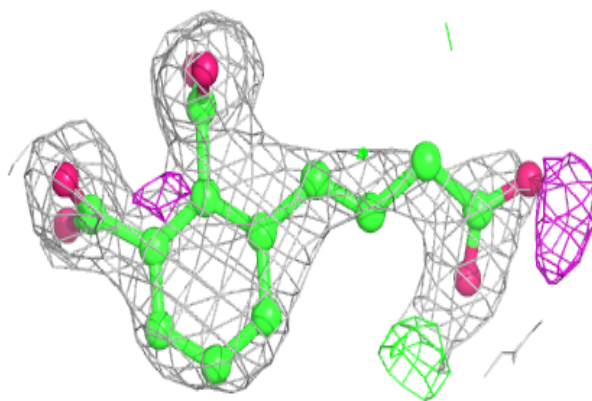
In the following table, the Atoms column lists the number of modelled atoms in the group and the number defined in the chemical component dictionary. The B-factors column lists the minimum, median, 95<sup>th</sup> percentile and maximum values of B factors of atoms in the group. The column labelled 'Q< 0.9' lists the number of atoms with occupancy less than 0.9.

Mol	Type	Chain	Res	Atoms	RSCC	RSR	B-factors(Å <sup>2</sup> )	Q<0.9
2	EDO	A	404	4/4	0.83	0.22	36,39,42,43	0
4	3JN	A	407	18/18	0.84	0.19	38,48,52,53	0
2	EDO	A	403	4/4	0.86	0.25	42,43,44,44	0
2	EDO	B	404	4/4	0.88	0.24	37,39,40,40	0
5	NAP	B	405[B]	48/48	0.89	0.23	16,23,27,28	48
5	NAP	B	405[A]	48/48	0.89	0.23	31,40,75,81	48
2	EDO	B	403	4/4	0.90	0.34	33,33,35,36	0
2	EDO	B	402	4/4	0.90	0.09	34,34,35,35	0
2	EDO	A	402	4/4	0.95	0.11	32,32,33,33	0
5	NAP	A	408	48/48	0.96	0.10	24,32,46,52	0
2	EDO	B	401	4/4	0.97	0.15	24,24,26,26	0
2	EDO	A	401	4/4	0.98	0.07	21,21,22,22	0
3	NA	A	406	1/1	0.98	0.08	22,22,22,22	0
3	NA	A	405	1/1	0.99	0.06	22,22,22,22	0

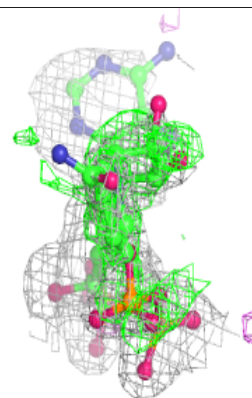
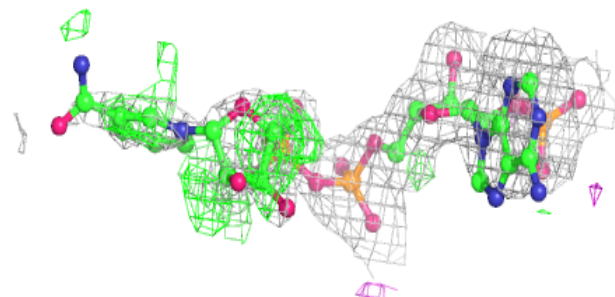
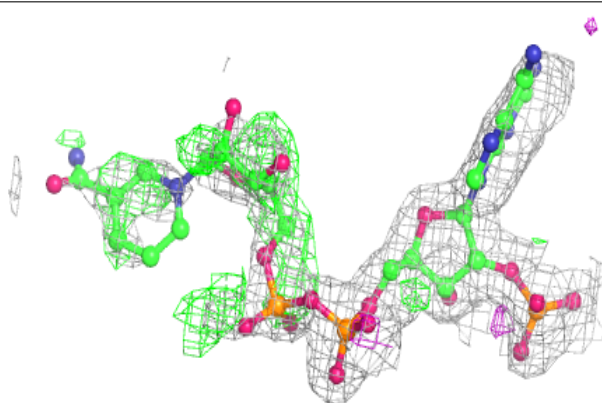
The following is a graphical depiction of the model fit to experimental electron density of all instances of the Ligand of Interest. In addition, ligands with molecular weight > 250 and outliers as shown on the geometry validation Tables will also be included. Each fit is shown from different orientation to approximate a three-dimensional view.

**Electron density around 3JN A 407:**

$2mF_o-DF_c$  (at 0.7 rmsd) in gray  
 $mF_o-DF_c$  (at 3 rmsd) in purple (negative)  
and green (positive)

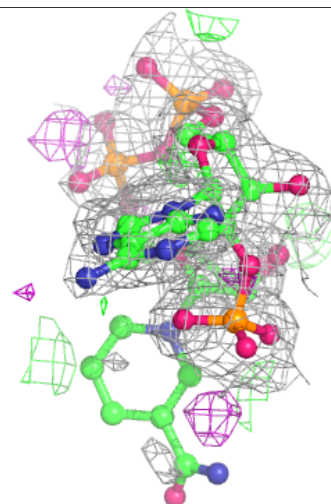
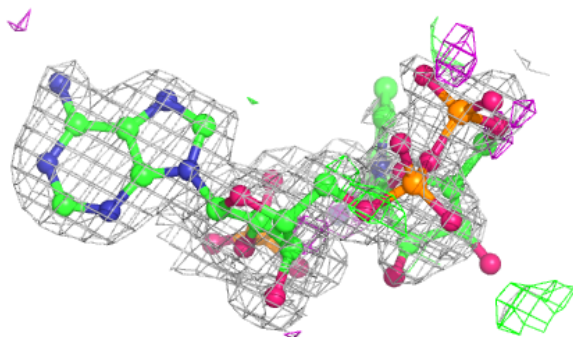
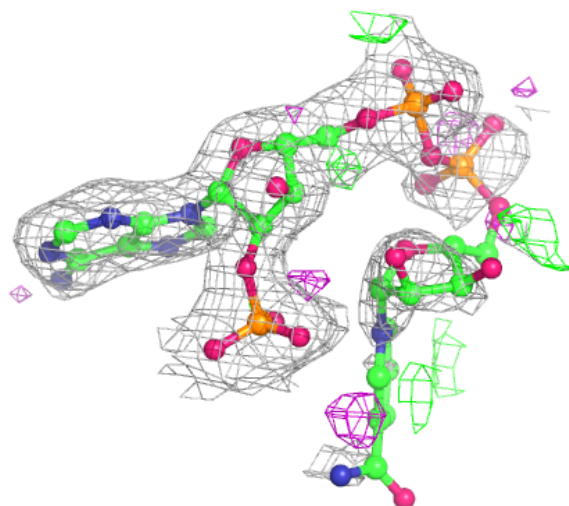
**Electron density around NAP B 405 (B):**

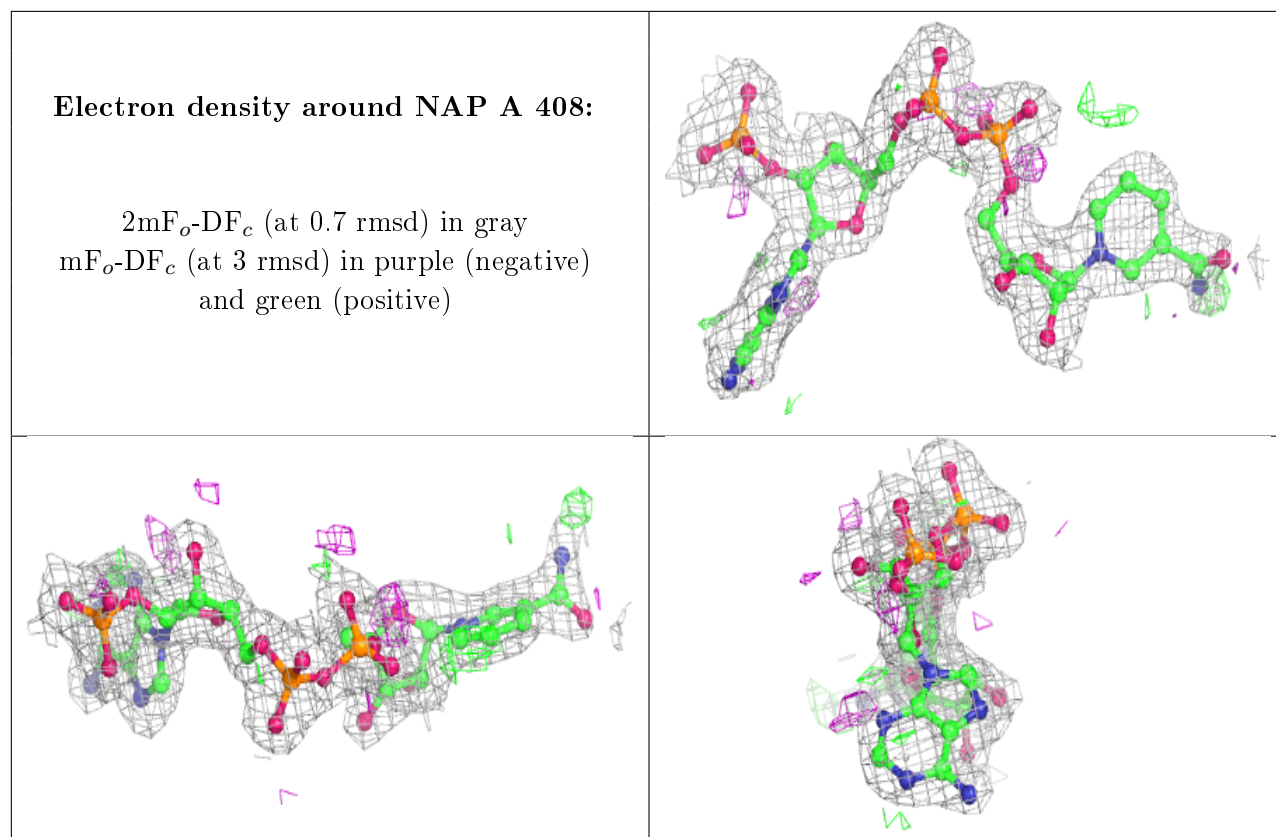
$2mF_o-DF_c$  (at 0.7 rmsd) in gray  
 $mF_o-DF_c$  (at 3 rmsd) in purple (negative)  
and green (positive)



**Electron density around NAP B 405 (A):**

$2mF_o-DF_c$  (at 0.7 rmsd) in gray  
 $mF_o-DF_c$  (at 3 rmsd) in purple (negative)  
and green (positive)





## 6.5 Other polymers ⓘ

There are no such residues in this entry.