



# Full wwPDB X-ray Structure Validation Report ⓘ

Jun 27, 2022 – 04:06 PM EDT

PDB ID : 7R7G  
Title : Synechococcus Olefin Synthase FAAL domain A229I/R336A in complex with  
palmitoyl adenylate and pyrophosphate  
Authors : Sikkema, A.P.; Strugis, R.M.; Smith, J.L.  
Deposited on : 2021-06-24  
Resolution : 2.25 Å(reported)

This is a Full wwPDB X-ray Structure Validation Report for a publicly released PDB entry.

We welcome your comments at [validation@mail.wwpdb.org](mailto:validation@mail.wwpdb.org)

A user guide is available at

<https://www.wwpdb.org/validation/2017/XrayValidationReportHelp>

with specific help available everywhere you see the ⓘ symbol.

The types of validation reports are described at <http://www.wwpdb.org/validation/2017/FAQs#types>.

---

The following versions of software and data (see [references ⓘ](#)) were used in the production of this report:

MolProbity : 4.02b-467  
Mogul : 1.8.5 (274361), CSD as541be (2020)  
Xtriage (Phenix) : 1.13  
EDS : 2.29  
buster-report : 1.1.7 (2018)  
Percentile statistics : 20191225.v01 (using entries in the PDB archive December 25th 2019)  
Refmac : 5.8.0158  
CCP4 : 7.0.044 (Gargrove)  
Ideal geometry (proteins) : Engh & Huber (2001)  
Ideal geometry (DNA, RNA) : Parkinson et al. (1996)  
Validation Pipeline (wwPDB-VP) : 2.29

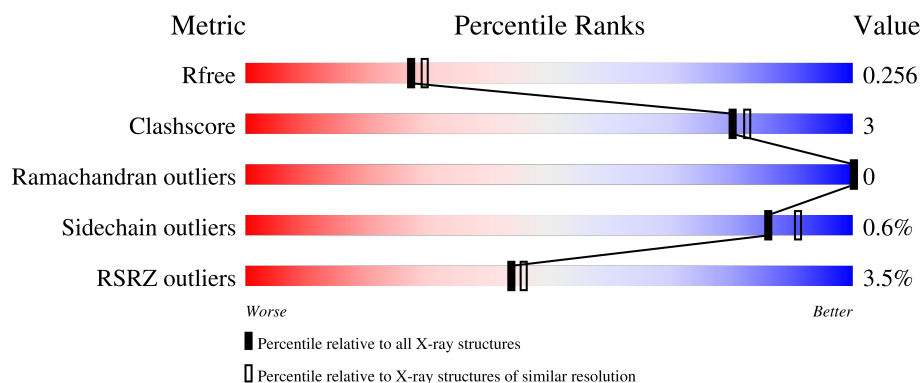
# 1 Overall quality at a glance

The following experimental techniques were used to determine the structure:

*X-RAY DIFFRACTION*

The reported resolution of this entry is 2.25 Å.

Percentile scores (ranging between 0-100) for global validation metrics of the entry are shown in the following graphic. The table shows the number of entries on which the scores are based.



Metric	Whole archive (#Entries)	Similar resolution (#Entries, resolution range(Å))
$R_{free}$	130704	1377 (2.26-2.26)
Clashscore	141614	1487 (2.26-2.26)
Ramachandran outliers	138981	1449 (2.26-2.26)
Sidechain outliers	138945	1450 (2.26-2.26)
RSRZ outliers	127900	1356 (2.26-2.26)

The table below summarises the geometric issues observed across the polymeric chains and their fit to the electron density. The red, orange, yellow and green segments of the lower bar indicate the fraction of residues that contain outliers for  $\geq 3$ , 2, 1 and 0 types of geometric quality criteria respectively. A grey segment represents the fraction of residues that are not modelled. The numeric value for each fraction is indicated below the corresponding segment, with a dot representing fractions  $\leq 5\%$ . The upper red bar (where present) indicates the fraction of residues that have poor fit to the electron density. The numeric value is given above the bar.

Mol	Chain	Length	Quality of chain
1	A	572	<div> <div>4%</div> <div> <div></div> <div>91%</div> <div>8%</div> </div> </div>
1	B	572	<div> <div>3%</div> <div> <div></div> <div>93%</div> <div>6%</div> </div> </div>

## 2 Entry composition

There are 6 unique types of molecules in this entry. The entry contains 9011 atoms, of which 0 are hydrogens and 0 are deuteriums.

In the tables below, the ZeroOcc column contains the number of atoms modelled with zero occupancy, the AltConf column contains the number of residues with at least one atom in alternate conformation and the Trace column contains the number of residues modelled with at most 2 atoms.

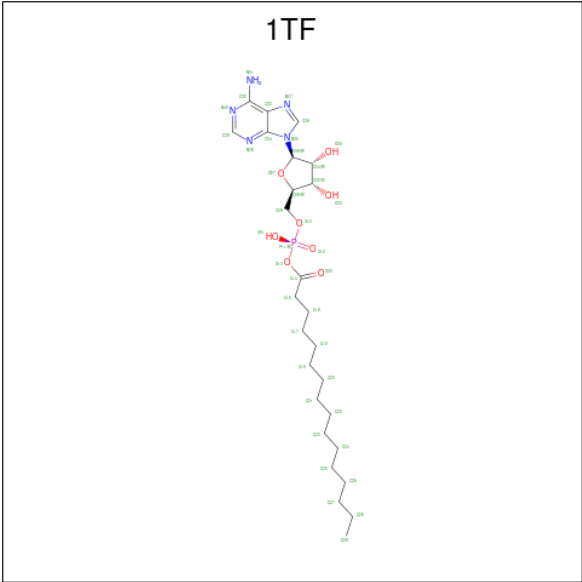
- Molecule 1 is a protein called Polyketide synthase.

Mol	Chain	Residues	Atoms					ZeroOcc	AltConf	Trace
1	A	567	Total	C	N	O	S	0	0	0
			4302	2740	741	808	13			
1	B	567	Total	C	N	O	S	0	0	0
			4285	2732	732	808	13			

There are 10 discrepancies between the modelled and reference sequences:

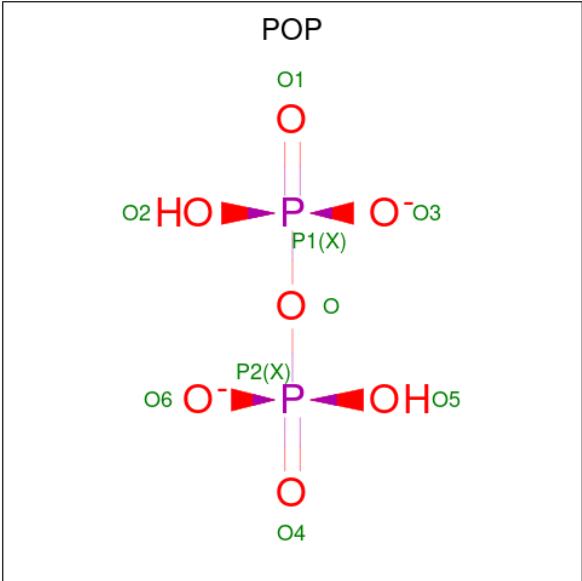
Chain	Residue	Modelled	Actual	Comment	Reference
A	-1	SER	-	expression tag	UNP B1XKC6
A	0	ASN	-	expression tag	UNP B1XKC6
A	1	ALA	-	expression tag	UNP B1XKC6
A	229	ILE	ALA	engineered mutation	UNP B1XKC6
A	336	ALA	ARG	engineered mutation	UNP B1XKC6
B	-1	SER	-	expression tag	UNP B1XKC6
B	0	ASN	-	expression tag	UNP B1XKC6
B	1	ALA	-	expression tag	UNP B1XKC6
B	229	ILE	ALA	engineered mutation	UNP B1XKC6
B	336	ALA	ARG	engineered mutation	UNP B1XKC6

- Molecule 2 is palmitoyl adenylate (three-letter code: 1TF) (formula: C<sub>26</sub>H<sub>44</sub>N<sub>5</sub>O<sub>8</sub>P) (labeled as "Ligand of Interest" by depositor).



Mol	Chain	Residues	Atoms					ZeroOcc	AltConf
2	A	1	Total	C	N	O	P	0	0
			40	26	5	8	1		
2	B	1	Total	C	N	O	P	0	0
			40	26	5	8	1		

- Molecule 3 is PYROPHOSPHATE 2- (three-letter code: POP) (formula: H<sub>2</sub>O<sub>7</sub>P<sub>2</sub>) (labeled as "Ligand of Interest" by depositor).



Mol	Chain	Residues	Atoms			ZeroOcc	AltConf
3	A	1	Total	O	P	0	0
			9	7	2		

Continued on next page...

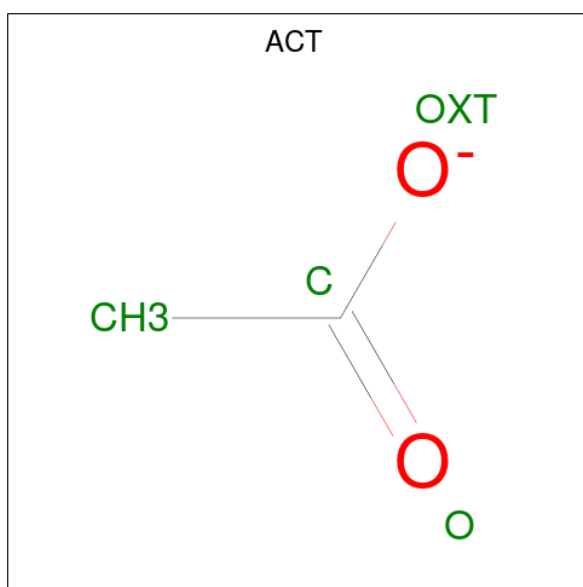
Continued from previous page...

Mol	Chain	Residues	Atoms			ZeroOcc	AltConf
3	B	1	Total	O	P	0	0
			9	7	2		

- Molecule 4 is MAGNESIUM ION (three-letter code: MG) (formula: Mg).

Mol	Chain	Residues	Atoms		ZeroOcc	AltConf
4	A	1	Total	Mg	0	0
			1	1		
4	B	1	Total	Mg	0	0
			1	1		

- Molecule 5 is ACETATE ION (three-letter code: ACT) (formula: C<sub>2</sub>H<sub>3</sub>O<sub>2</sub>).



Mol	Chain	Residues	Atoms			ZeroOcc	AltConf
5	A	1	Total	C	O	0	0
			4	2	2		
5	B	1	Total	C	O	0	0
			4	2	2		

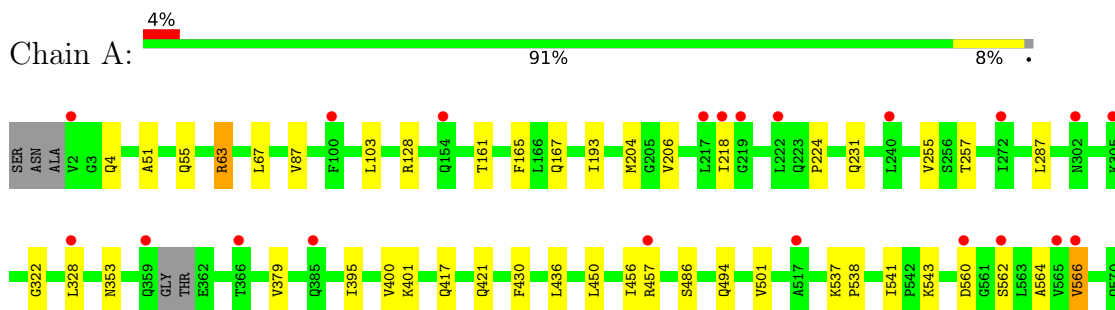
- Molecule 6 is water.

Mol	Chain	Residues	Atoms		ZeroOcc	AltConf
6	A	164	Total	O	0	0
			164	164		
6	B	152	Total	O	0	0
			152	152		

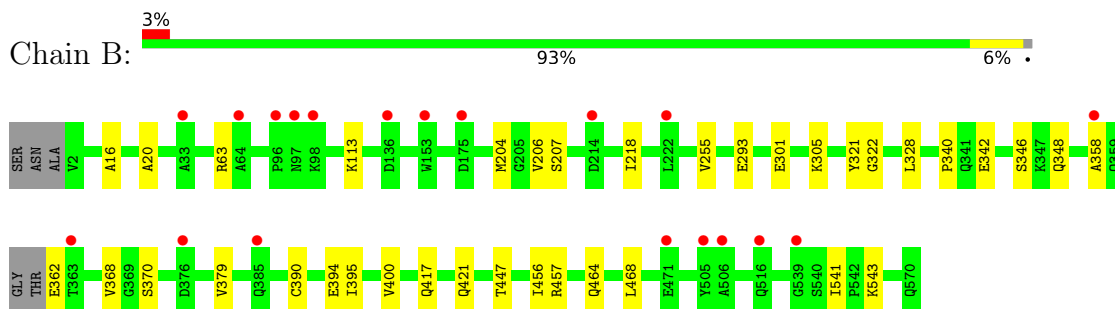
### 3 Residue-property plots [i](#)

These plots are drawn for all protein, RNA, DNA and oligosaccharide chains in the entry. The first graphic for a chain summarises the proportions of the various outlier classes displayed in the second graphic. The second graphic shows the sequence view annotated by issues in geometry and electron density. Residues are color-coded according to the number of geometric quality criteria for which they contain at least one outlier: green = 0, yellow = 1, orange = 2 and red = 3 or more. A red dot above a residue indicates a poor fit to the electron density ( $RSRZ > 2$ ). Stretches of 2 or more consecutive residues without any outlier are shown as a green connector. Residues present in the sample, but not in the model, are shown in grey.

- Molecule 1: Polyketide synthase



- Molecule 1: Polyketide synthase



## 4 Data and refinement statistics

Property	Value	Source
Space group	C 1 2 1	Depositor
Cell constants a, b, c, $\alpha$ , $\beta$ , $\gamma$	201.24Å 60.92Å 95.75Å 90.00° 101.11° 90.00°	Depositor
Resolution (Å)	29.41 – 2.25 29.41 – 2.25	Depositor EDS
% Data completeness (in resolution range)	96.7 (29.41-2.25) 83.8 (29.41-2.25)	Depositor EDS
$R_{merge}$	0.14	Depositor
$R_{sym}$	(Not available)	Depositor
$\langle I/\sigma(I) \rangle$ <sup>1</sup>	0.63 (at 2.24Å)	Xtriage
Refinement program	PHENIX 1.19.2_4158	Depositor
R, $R_{free}$	0.230 , 0.256 0.229 , 0.256	Depositor DCC
$R_{free}$ test set	1914 reflections (3.67%)	wwPDB-VP
Wilson B-factor (Å <sup>2</sup> )	23.8	Xtriage
Anisotropy	1.111	Xtriage
Bulk solvent $k_{sol}$ (e/Å <sup>3</sup> ), $B_{sol}$ (Å <sup>2</sup> )	0.30 , 27.5	EDS
L-test for twinning <sup>2</sup>	$\langle  L  \rangle = 0.48$ , $\langle L^2 \rangle = 0.31$	Xtriage
Estimated twinning fraction	No twinning to report.	Xtriage
$F_o, F_c$ correlation	0.92	EDS
Total number of atoms	9011	wwPDB-VP
Average B, all atoms (Å <sup>2</sup> )	40.0	wwPDB-VP

Xtriage's analysis on translational NCS is as follows: *The largest off-origin peak in the Patterson function is 6.87% of the height of the origin peak. No significant pseudotranslation is detected.*

<sup>1</sup>Intensities estimated from amplitudes.

<sup>2</sup>Theoretical values of  $\langle |L| \rangle$ ,  $\langle L^2 \rangle$  for acentric reflections are 0.5, 0.333 respectively for untwinned datasets, and 0.375, 0.2 for perfectly twinned datasets.

## 5 Model quality

### 5.1 Standard geometry

Bond lengths and bond angles in the following residue types are not validated in this section: MG, 1TF, POP, ACT

The Z score for a bond length (or angle) is the number of standard deviations the observed value is removed from the expected value. A bond length (or angle) with  $|Z| > 5$  is considered an outlier worth inspection. RMSZ is the root-mean-square of all Z scores of the bond lengths (or angles).

Mol	Chain	Bond lengths		Bond angles	
		RMSZ	# Z  >5	RMSZ	# Z  >5
1	A	0.57	0/4392	0.72	0/5971
1	B	0.58	0/4375	0.73	0/5951
All	All	0.58	0/8767	0.72	0/11922

There are no bond length outliers.

There are no bond angle outliers.

There are no chirality outliers.

There are no planarity outliers.

### 5.2 Too-close contacts

In the following table, the Non-H and H(model) columns list the number of non-hydrogen atoms and hydrogen atoms in the chain respectively. The H(added) column lists the number of hydrogen atoms added and optimized by MolProbity. The Clashes column lists the number of clashes within the asymmetric unit, whereas Symm-Clashes lists symmetry-related clashes.

Mol	Chain	Non-H	H(model)	H(added)	Clashes	Symm-Clashes
1	A	4302	0	4252	26	0
1	B	4285	0	4221	20	0
2	A	40	0	0	0	0
2	B	40	0	0	0	0
3	A	9	0	0	0	0
3	B	9	0	0	0	0
4	A	1	0	0	0	0
4	B	1	0	0	0	0
5	A	4	0	3	1	0
5	B	4	0	3	0	0
6	A	164	0	0	0	0

*Continued on next page...*



*Continued from previous page...*

Mol	Chain	Non-H	H(model)	H(added)	Clashes	Symm-Clashes
6	B	152	0	0	2	0
All	All	9011	0	8479	46	0

The all-atom clashscore is defined as the number of clashes found per 1000 atoms (including hydrogen atoms). The all-atom clashscore for this structure is 3.

All (46) close contacts within the same asymmetric unit are listed below, sorted by their clash magnitude.

Atom-1	Atom-2	Interatomic distance (Å)	Clash overlap (Å)
1:B:456:ILE:HG22	1:B:457:ARG:HG2	1.70	0.73
1:A:67:LEU:HD21	1:A:103:LEU:HD21	1.75	0.69
1:B:346:SER:HB2	1:B:358:ALA:HA	1.79	0.64
1:A:224:PRO:HG3	1:A:231:GLN:HE21	1.64	0.63
1:A:161:THR:HG22	5:A:604:ACT:H1	1.89	0.53
1:A:541:ILE:HG23	1:A:543:LYS:HG3	1.91	0.53
1:B:206:VAL:HG12	1:B:255:VAL:HG11	1.92	0.51
1:B:379:VAL:HG22	1:B:400:VAL:HG22	1.92	0.51
1:B:390:CYS:HB3	1:B:394:GLU:HG3	1.93	0.50
1:A:322:GLY:HA3	1:A:328:LEU:O	2.12	0.50
1:B:340:PRO:HG2	6:B:703:HOH:O	2.11	0.50
1:A:537:LYS:HG3	1:A:566:VAL:HG13	1.93	0.49
1:B:204:MET:HB3	1:B:255:VAL:HA	1.93	0.49
1:B:464:GLN:O	1:B:468:LEU:HD23	2.13	0.48
1:A:51:ALA:O	1:A:55:GLN:HG3	2.14	0.47
1:B:322:GLY:HA3	1:B:328:LEU:O	2.14	0.47
1:B:395:ILE:HD13	1:B:447:THR:HG21	1.96	0.47
1:B:417:GLN:O	1:B:421:GLN:HB2	2.14	0.47
1:A:379:VAL:HG22	1:A:400:VAL:HG22	1.95	0.47
1:A:165:PHE:CE2	1:A:167:GLN:HB2	2.50	0.46
1:A:401:LYS:HE2	1:A:430:PHE:CE2	2.50	0.46
1:B:218:ILE:HB	1:B:328:LEU:HD22	1.97	0.46
1:A:206:VAL:HB	1:A:255:VAL:HG21	1.98	0.46
1:B:348:GLN:OE1	1:B:362:GLU:HB2	2.17	0.45
1:B:541:ILE:O	1:B:543:LYS:HE2	2.16	0.45
1:A:63:ARG:HG3	1:A:87:VAL:HB	1.98	0.44
1:A:501:VAL:O	1:A:538:PRO:HG3	2.18	0.44
1:B:301:GLU:HG3	1:B:305:LYS:HD3	1.99	0.44
1:A:417:GLN:O	1:A:421:GLN:HB2	2.19	0.43
1:A:257:THR:HG23	1:A:287:LEU:HB3	1.99	0.43
1:B:113:LYS:HA	1:B:113:LYS:HD2	1.93	0.43
1:A:353:ASN:HA	1:A:395:ILE:HB	2.01	0.43

*Continued on next page...*

Continued from previous page...

Atom-1	Atom-2	Interatomic distance (Å)	Clash overlap (Å)
1:A:537:LYS:HD2	1:A:564:ALA:HB1	2.00	0.43
1:B:16:ALA:O	1:B:20:ALA:HB2	2.19	0.43
1:B:342:GLU:HG2	1:B:368:VAL:HG22	2.01	0.42
1:A:401:LYS:HB3	1:A:401:LYS:HE3	1.87	0.42
1:A:193:ILE:HD11	1:A:328:LEU:HD23	2.02	0.41
1:A:128:ARG:HE	1:A:128:ARG:HB3	1.52	0.41
1:A:218:ILE:HB	1:A:328:LEU:HD22	2.01	0.41
1:A:204:MET:HB3	1:A:255:VAL:HA	2.03	0.41
1:A:436:LEU:HD21	1:A:450:LEU:HD13	2.02	0.41
1:B:207:SER:HA	6:B:747:HOH:O	2.20	0.41
1:A:456:ILE:HG22	1:A:457:ARG:HG2	2.03	0.40
1:A:560:ASP:OD1	1:A:562:SER:HB3	2.20	0.40
1:A:486:SER:HA	1:A:494:GLN:O	2.22	0.40
1:B:321:TYR:HB2	1:B:370:SER:HB3	2.03	0.40

There are no symmetry-related clashes.

## 5.3 Torsion angles [i](#)

### 5.3.1 Protein backbone [i](#)

In the following table, the Percentiles column shows the percent Ramachandran outliers of the chain as a percentile score with respect to all X-ray entries followed by that with respect to entries of similar resolution.

The Analysed column shows the number of residues for which the backbone conformation was analysed, and the total number of residues.

Mol	Chain	Analysed	Favoured	Allowed	Outliers	Percentiles	
1	A	563/572 (98%)	547 (97%)	16 (3%)	0	100	100
1	B	563/572 (98%)	548 (97%)	15 (3%)	0	100	100
All	All	1126/1144 (98%)	1095 (97%)	31 (3%)	0	100	100

There are no Ramachandran outliers to report.

### 5.3.2 Protein sidechains [i](#)

In the following table, the Percentiles column shows the percent sidechain outliers of the chain as a percentile score with respect to all X-ray entries followed by that with respect to entries of similar resolution.

The Analysed column shows the number of residues for which the sidechain conformation was analysed, and the total number of residues.

Mol	Chain	Analysed	Rotameric	Outliers	Percentiles	
1	A	442/453 (98%)	439 (99%)	3 (1%)	84	90
1	B	439/453 (97%)	437 (100%)	2 (0%)	88	92
All	All	881/906 (97%)	876 (99%)	5 (1%)	86	91

All (5) residues with a non-rotameric sidechain are listed below:

Mol	Chain	Res	Type
1	A	4	GLN
1	A	63	ARG
1	A	566	VAL
1	B	63	ARG
1	B	293	GLU

Sometimes sidechains can be flipped to improve hydrogen bonding and reduce clashes. All (5) such sidechains are listed below:

Mol	Chain	Res	Type
1	A	4	GLN
1	A	231	GLN
1	A	385	GLN
1	B	167	GLN
1	B	385	GLN

### 5.3.3 RNA ⓘ

There are no RNA molecules in this entry.

## 5.4 Non-standard residues in protein, DNA, RNA chains ⓘ

There are no non-standard protein/DNA/RNA residues in this entry.

## 5.5 Carbohydrates ⓘ

There are no monosaccharides in this entry.

## 5.6 Ligand geometry

Of 8 ligands modelled in this entry, 2 are monoatomic - leaving 6 for Mogul analysis.

In the following table, the Counts columns list the number of bonds (or angles) for which Mogul statistics could be retrieved, the number of bonds (or angles) that are observed in the model and the number of bonds (or angles) that are defined in the Chemical Component Dictionary. The Link column lists molecule types, if any, to which the group is linked. The Z score for a bond length (or angle) is the number of standard deviations the observed value is removed from the expected value. A bond length (or angle) with  $|Z| > 2$  is considered an outlier worth inspection. RMSZ is the root-mean-square of all Z scores of the bond lengths (or angles).

Mol	Type	Chain	Res	Link	Bond lengths			Bond angles		
					Counts	RMSZ	# Z  > 2	Counts	RMSZ	# Z  > 2
2	1TF	A	601	-	38,42,42	2.73	7 (18%)	40,56,56	1.24	2 (5%)
3	POP	B	602	4	6,8,8	1.25	0	13,13,13	0.95	0
2	1TF	B	601	-	38,42,42	2.67	7 (18%)	40,56,56	1.18	2 (5%)
5	ACT	A	604	-	3,3,3	1.23	0	3,3,3	1.51	0
3	POP	A	602	4	6,8,8	1.20	0	13,13,13	0.89	0
5	ACT	B	604	-	3,3,3	1.13	0	3,3,3	1.43	0

In the following table, the Chirals column lists the number of chiral outliers, the number of chiral centers analysed, the number of these observed in the model and the number defined in the Chemical Component Dictionary. Similar counts are reported in the Torsion and Rings columns. '-' means no outliers of that kind were identified.

Mol	Type	Chain	Res	Link	Chirals	Torsions	Rings
2	1TF	A	601	-	-	10/24/46/46	0/3/3/3
3	POP	A	602	4	-	3/6/6/6	-
3	POP	B	602	4	-	3/6/6/6	-
2	1TF	B	601	-	-	8/24/46/46	0/3/3/3

All (14) bond length outliers are listed below:

Mol	Chain	Res	Type	Atoms	Z	Observed(Å)	Ideal(Å)
2	A	601	1TF	C32-C08	-9.51	1.28	1.53
2	B	601	1TF	C32-C08	-9.36	1.29	1.53
2	A	601	1TF	O07-C06	-9.20	1.28	1.41
2	B	601	1TF	O07-C06	-8.80	1.28	1.41
2	B	601	1TF	O07-C08	7.61	1.62	1.45
2	A	601	1TF	O07-C08	7.42	1.61	1.45
2	B	601	1TF	O33-C32	3.09	1.50	1.43
2	A	601	1TF	O35-C34	-3.02	1.35	1.43
2	A	601	1TF	C02-N01	2.90	1.44	1.34

*Continued on next page...*

*Continued from previous page...*

Mol	Chain	Res	Type	Atoms	Z	Observed(Å)	Ideal(Å)
2	B	601	1TF	C02-N01	2.90	1.44	1.34
2	A	601	1TF	O33-C32	2.88	1.49	1.43
2	B	601	1TF	O35-C34	-2.86	1.36	1.43
2	A	601	1TF	P11-O13	2.67	1.66	1.60
2	B	601	1TF	P11-O13	2.31	1.65	1.60

All (4) bond angle outliers are listed below:

Mol	Chain	Res	Type	Atoms	Z	Observed(°)	Ideal(°)
2	A	601	1TF	N38-C39-N40	-4.69	121.35	128.68
2	B	601	1TF	N38-C39-N40	-4.53	121.60	128.68
2	A	601	1TF	O13-P11-O10	3.10	111.98	102.92
2	B	601	1TF	O13-P11-O10	2.88	111.34	102.92

There are no chirality outliers.

All (24) torsion outliers are listed below:

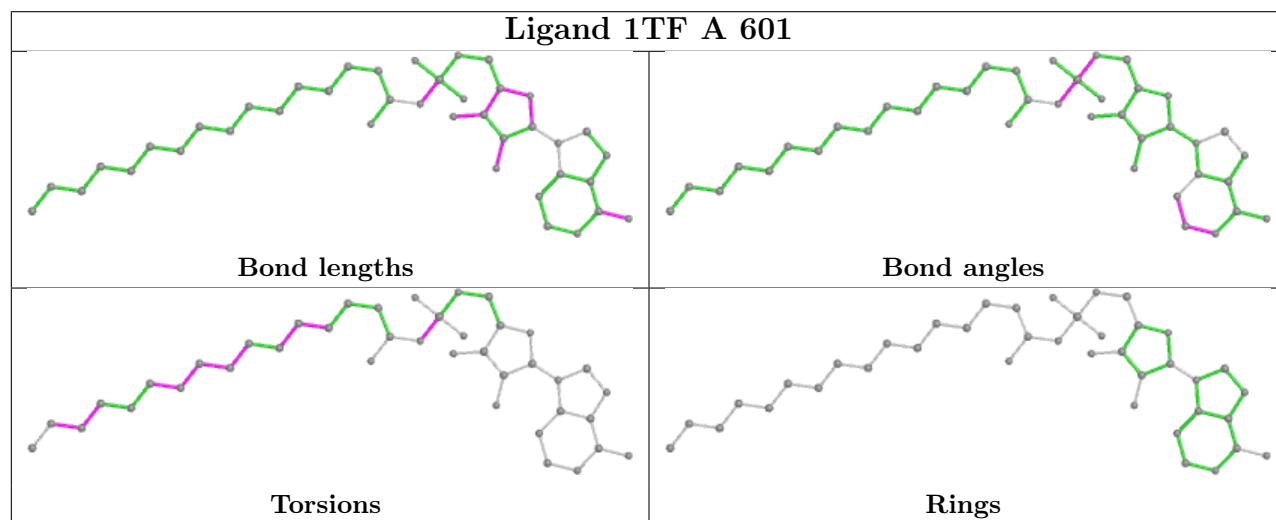
Mol	Chain	Res	Type	Atoms
3	A	602	POP	P2-O-P1-O3
3	B	602	POP	P2-O-P1-O2
2	A	601	1TF	C21-C22-C23-C24
2	B	601	1TF	C21-C22-C23-C24
2	B	601	1TF	C22-C23-C24-C25
2	A	601	1TF	C22-C23-C24-C25
2	A	601	1TF	C20-C21-C22-C23
2	A	601	1TF	C14-O13-P11-O10
2	B	601	1TF	C20-C21-C22-C23
2	A	601	1TF	C26-C27-C28-C29
2	A	601	1TF	C19-C20-C21-C22
2	B	601	1TF	C19-C20-C21-C22
2	B	601	1TF	C14-O13-P11-O12
2	B	601	1TF	C26-C27-C28-C29
2	B	601	1TF	C17-C18-C19-C20
3	B	602	POP	P2-O-P1-O3
2	B	601	1TF	C14-O13-P11-O10
2	A	601	1TF	C25-C26-C27-C28
2	A	601	1TF	C17-C18-C19-C20
2	A	601	1TF	C16-C17-C18-C19
2	A	601	1TF	C14-O13-P11-O12
3	A	602	POP	P2-O-P1-O1
3	B	602	POP	P2-O-P1-O1
3	A	602	POP	P2-O-P1-O2

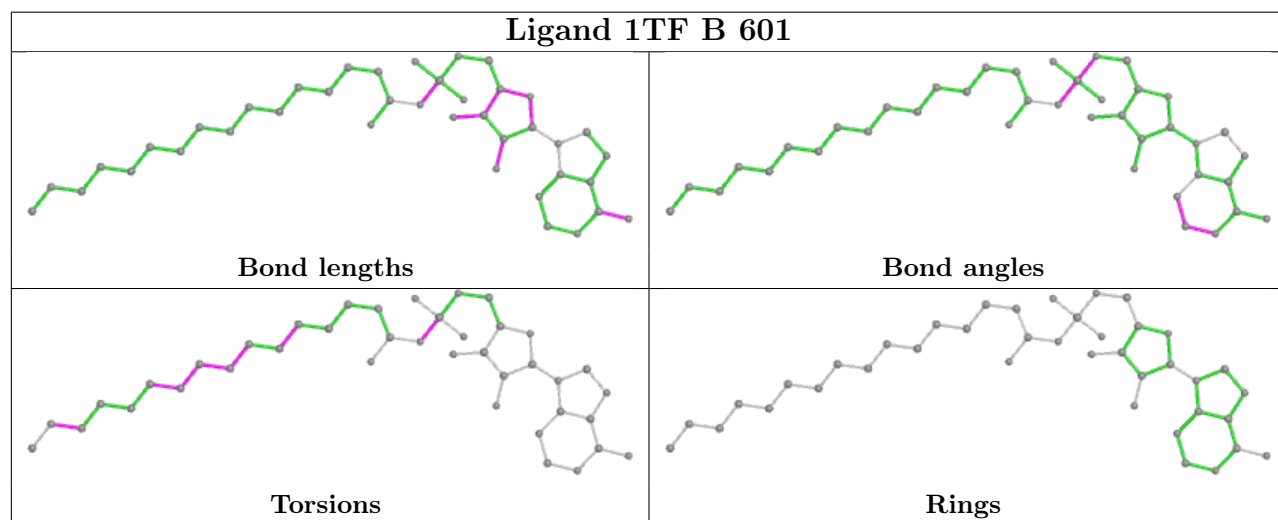
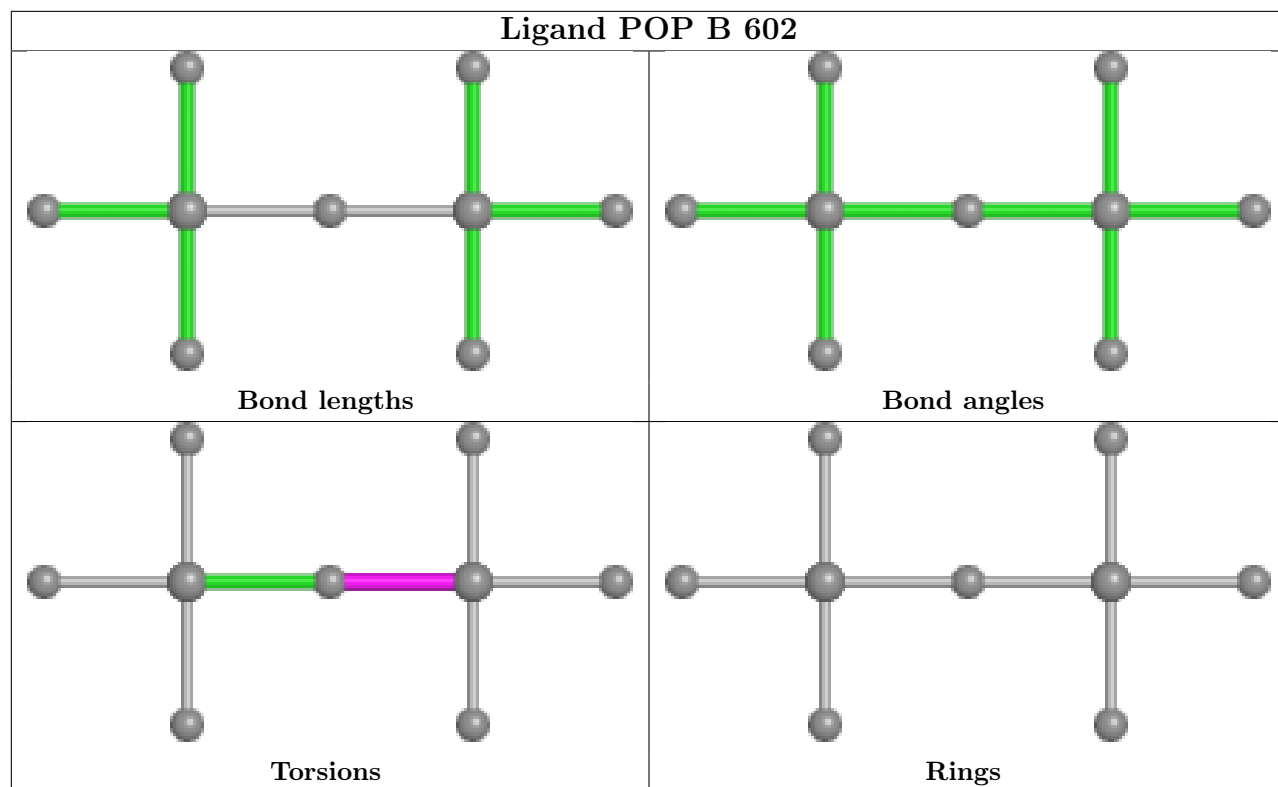
There are no ring outliers.

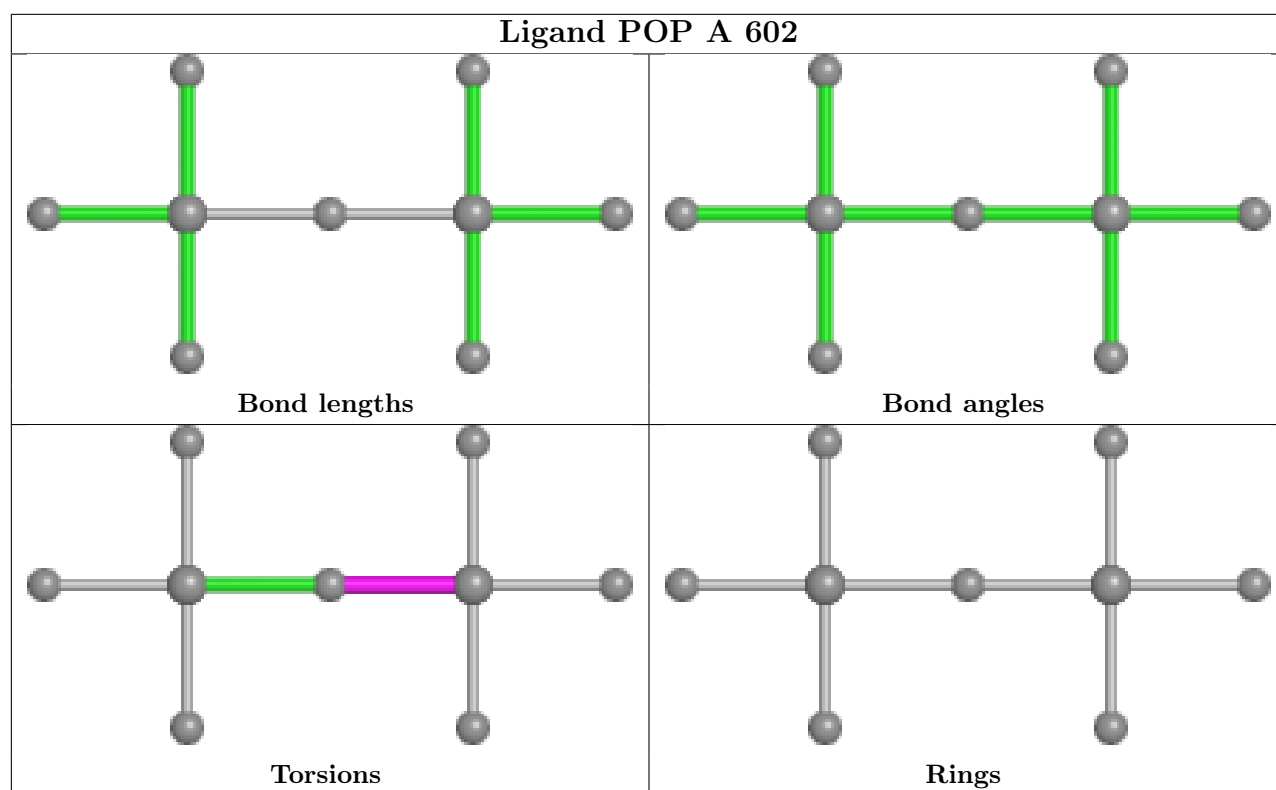
1 monomer is involved in 1 short contact:

Mol	Chain	Res	Type	Clashes	Symm-Clashes
5	A	604	ACT	1	0

The following is a two-dimensional graphical depiction of Mogul quality analysis of bond lengths, bond angles, torsion angles, and ring geometry for all instances of the Ligand of Interest. In addition, ligands with molecular weight > 250 and outliers as shown on the validation Tables will also be included. For torsion angles, if less than 5% of the Mogul distribution of torsion angles is within 10 degrees of the torsion angle in question, then that torsion angle is considered an outlier. Any bond that is central to one or more torsion angles identified as an outlier by Mogul will be highlighted in the graph. For rings, the root-mean-square deviation (RMSD) between the ring in question and similar rings identified by Mogul is calculated over all ring torsion angles. If the average RMSD is greater than 60 degrees and the minimal RMSD between the ring in question and any Mogul-identified rings is also greater than 60 degrees, then that ring is considered an outlier. The outliers are highlighted in purple. The color gray indicates Mogul did not find sufficient equivalents in the CSD to analyse the geometry.







## 5.7 Other polymers [i](#)

There are no such residues in this entry.

## 5.8 Polymer linkage issues [i](#)

There are no chain breaks in this entry.



## 6 Fit of model and data ⓘ

### 6.1 Protein, DNA and RNA chains ⓘ

In the following table, the column labelled ‘#RSRZ> 2’ contains the number (and percentage) of RSRZ outliers, followed by percent RSRZ outliers for the chain as percentile scores relative to all X-ray entries and entries of similar resolution. The OWAB column contains the minimum, median, 95<sup>th</sup> percentile and maximum values of the occupancy-weighted average B-factor per residue. The column labelled ‘Q< 0.9’ lists the number of (and percentage) of residues with an average occupancy less than 0.9.

Mol	Chain	Analysed	<RSRZ>	#RSRZ>2	OWAB(Å <sup>2</sup> )	Q<0.9
1	A	567/572 (99%)	0.55	21 (3%) 41 44	25, 39, 55, 70	0
1	B	567/572 (99%)	0.54	19 (3%) 45 47	26, 40, 59, 83	0
All	All	1134/1144 (99%)	0.54	40 (3%) 44 46	25, 39, 58, 83	0

All (40) RSRZ outliers are listed below:

Mol	Chain	Res	Type	RSRZ
1	B	506	ALA	3.9
1	B	505	TYR	3.7
1	B	96	PRO	3.4
1	B	97	ASN	3.4
1	A	222	LEU	3.2
1	B	175	ASP	3.2
1	B	98	LYS	3.1
1	A	219	GLY	3.1
1	A	217	LEU	3.0
1	A	566	VAL	2.9
1	A	385	GLN	2.8
1	A	218	ILE	2.7
1	B	376	ASP	2.7
1	B	222	LEU	2.6
1	A	328	LEU	2.5
1	A	2	VAL	2.5
1	A	565	VAL	2.5
1	A	305	LYS	2.5
1	B	471	GLU	2.4
1	A	359	GLN	2.4
1	A	100	PHE	2.3
1	A	302	ASN	2.3
1	A	240	LEU	2.3
1	B	214	ASP	2.3

*Continued on next page...*

*Continued from previous page...*

Mol	Chain	Res	Type	RSRZ
1	A	457	ARG	2.3
1	A	366	THR	2.3
1	B	358	ALA	2.2
1	B	385	GLN	2.2
1	B	136	ASP	2.2
1	A	154	GLN	2.2
1	B	33	ALA	2.1
1	A	272	ILE	2.1
1	B	153	TRP	2.1
1	B	516	GLN	2.1
1	A	560	ASP	2.1
1	B	539	GLY	2.1
1	A	562	SER	2.0
1	A	517	ALA	2.0
1	B	363	THR	2.0
1	B	64	ALA	2.0

## 6.2 Non-standard residues in protein, DNA, RNA chains [i](#)

There are no non-standard protein/DNA/RNA residues in this entry.

## 6.3 Carbohydrates [i](#)

There are no monosaccharides in this entry.

## 6.4 Ligands [i](#)

In the following table, the Atoms column lists the number of modelled atoms in the group and the number defined in the chemical component dictionary. The B-factors column lists the minimum, median, 95<sup>th</sup> percentile and maximum values of B factors of atoms in the group. The column labelled 'Q< 0.9' lists the number of atoms with occupancy less than 0.9.

Mol	Type	Chain	Res	Atoms	RSCC	RSR	B-factors( $\text{\AA}^2$ )	Q<0.9
4	MG	B	603	1/1	0.56	0.20	48,48,48,48	0
4	MG	A	603	1/1	0.85	0.24	49,49,49,49	0
2	1TF	A	601	40/40	0.87	0.20	31,37,48,56	0
2	1TF	B	601	40/40	0.87	0.20	32,38,48,51	0
3	POP	A	602	9/9	0.91	0.14	43,44,48,49	0
5	ACT	A	604	4/4	0.91	0.17	23,28,29,43	0
3	POP	B	602	9/9	0.94	0.13	40,46,49,50	0

*Continued on next page...*

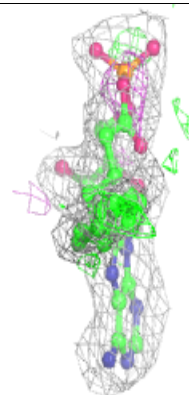
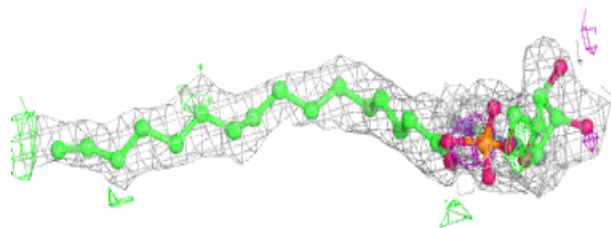
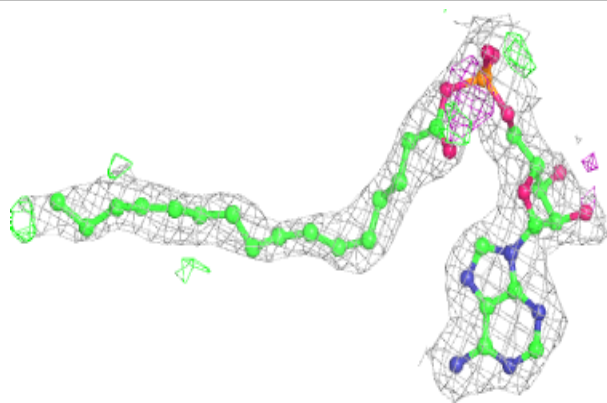
*Continued from previous page...*

Mol	Type	Chain	Res	Atoms	RSCC	RSR	B-factors( $\text{\AA}^2$ )	Q<0.9
5	ACT	B	604	4/4	0.95	0.13	31,33,34,36	0

The following is a graphical depiction of the model fit to experimental electron density of all instances of the Ligand of Interest. In addition, ligands with molecular weight > 250 and outliers as shown on the geometry validation Tables will also be included. Each fit is shown from different orientation to approximate a three-dimensional view.

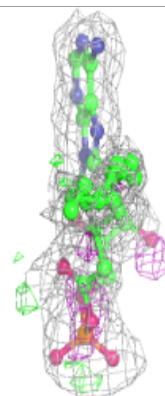
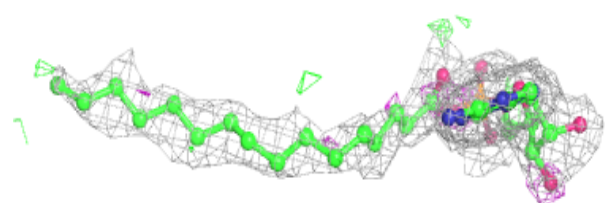
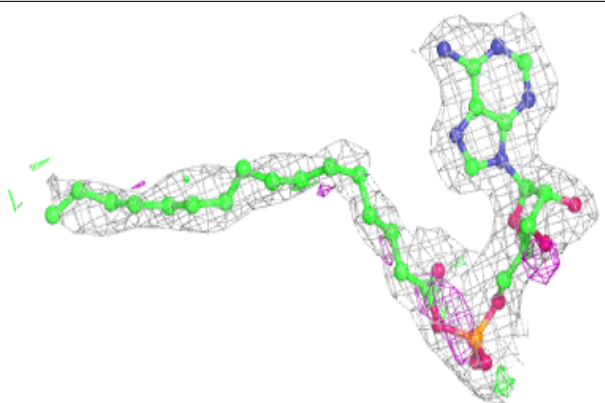
**Electron density around 1TF A 601:**

2mF<sub>o</sub>-DF<sub>c</sub> (at 0.7 rmsd) in gray  
mF<sub>o</sub>-DF<sub>c</sub> (at 3 rmsd) in purple (negative)  
and green (positive)



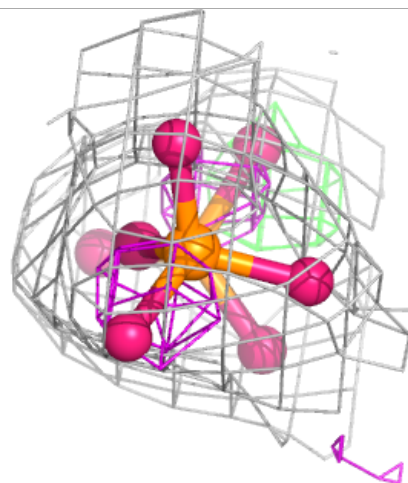
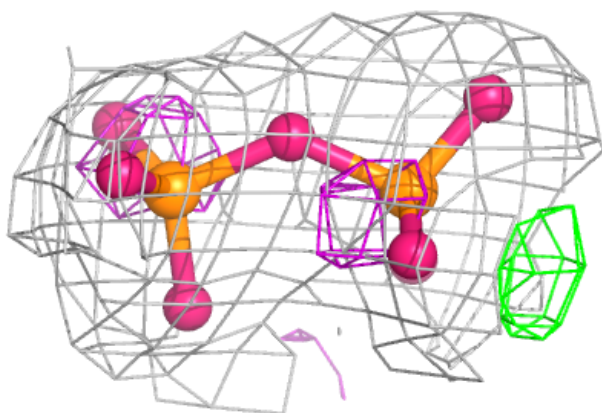
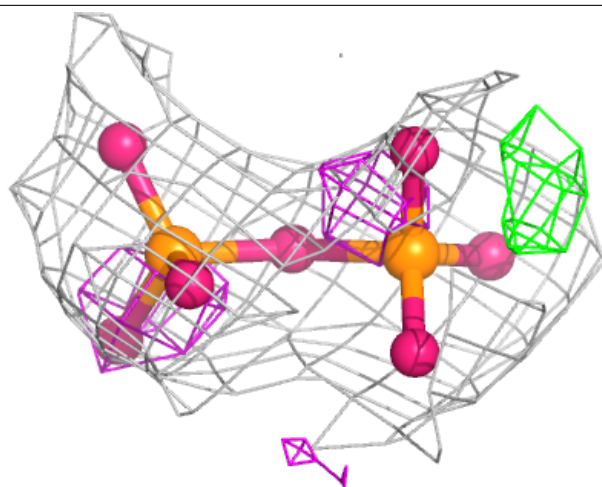
**Electron density around 1TF B 601:**

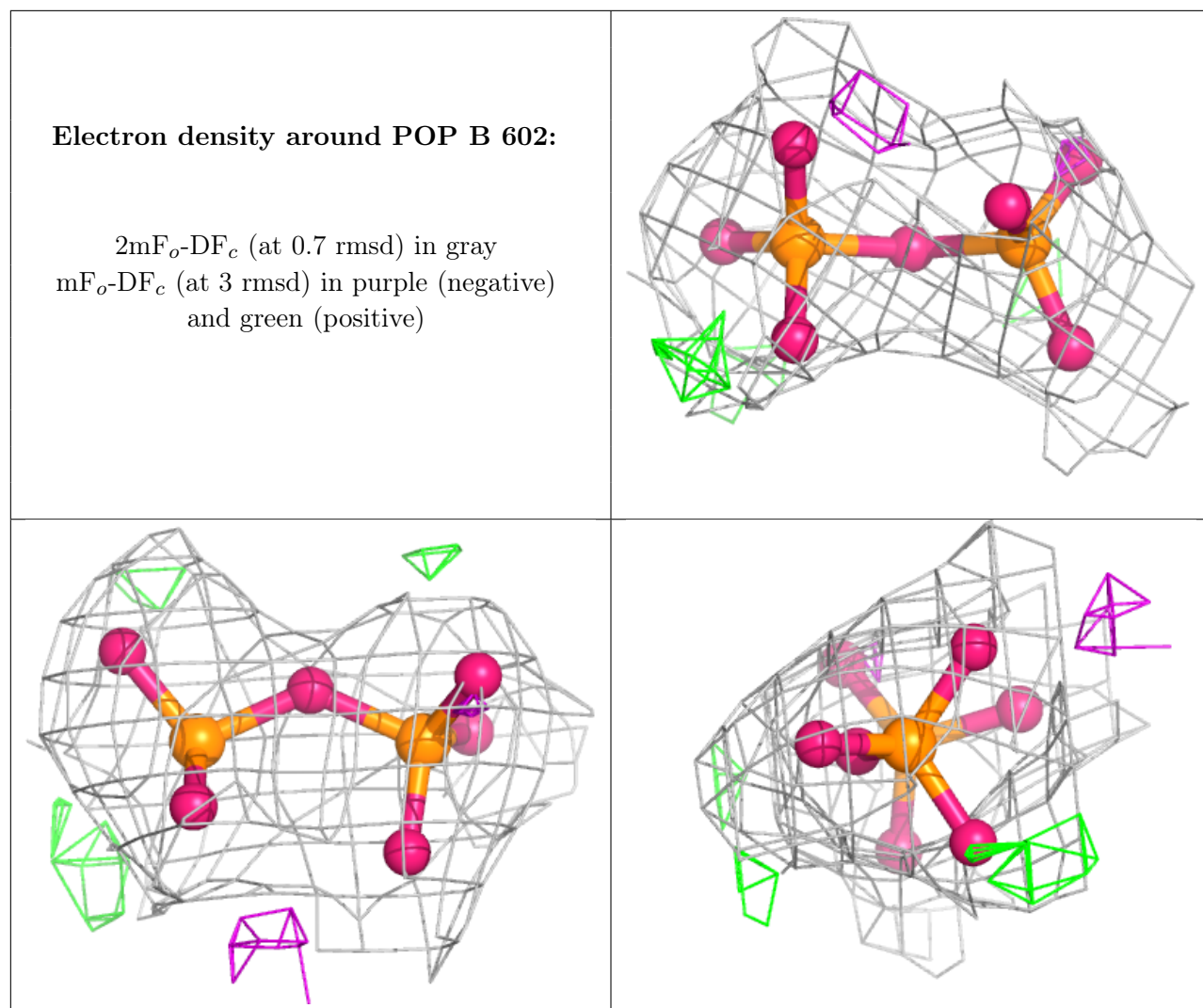
$2mF_o - DF_c$  (at 0.7 rmsd) in gray  
 $mF_o - DF_c$  (at 3 rmsd) in purple (negative)  
and green (positive)



**Electron density around POP A 602:**

$2mF_o-DF_c$  (at 0.7 rmsd) in gray  
 $mF_o-DF_c$  (at 3 rmsd) in purple (negative)  
and green (positive)





## 6.5 Other polymers [i](#)

There are no such residues in this entry.