



Full wwPDB X-ray Structure Validation Report ⓘ

May 31, 2022 – 04:37 PM EDT

PDB ID : 7RAD
Title : Crystal Structure Analysis of ALDH1B1
Authors : Fernandez, D.; Chen, J.K.
Deposited on : 2021-07-01
Resolution : 2.30 Å(reported)

This is a Full wwPDB X-ray Structure Validation Report for a publicly released PDB entry.

We welcome your comments at validation@mail.wwpdb.org

A user guide is available at

<https://www.wwpdb.org/validation/2017/XrayValidationReportHelp>

with specific help available everywhere you see the ⓘ symbol.

The following versions of software and data (see [references ⓘ](#)) were used in the production of this report:

MolProbity : 4.02b-467
Mogul : 1.8.5 (274361), CSD as541be (2020)
Xtriage (Phenix) : 1.13
EDS : 2.28.1
buster-report : 1.1.7 (2018)
Percentile statistics : 20191225.v01 (using entries in the PDB archive December 25th 2019)
Refmac : 5.8.0158
CCP4 : 7.0.044 (Gargrove)
Ideal geometry (proteins) : Engh & Huber (2001)
Ideal geometry (DNA, RNA) : Parkinson et al. (1996)
Validation Pipeline (wwPDB-VP) : 2.28.1

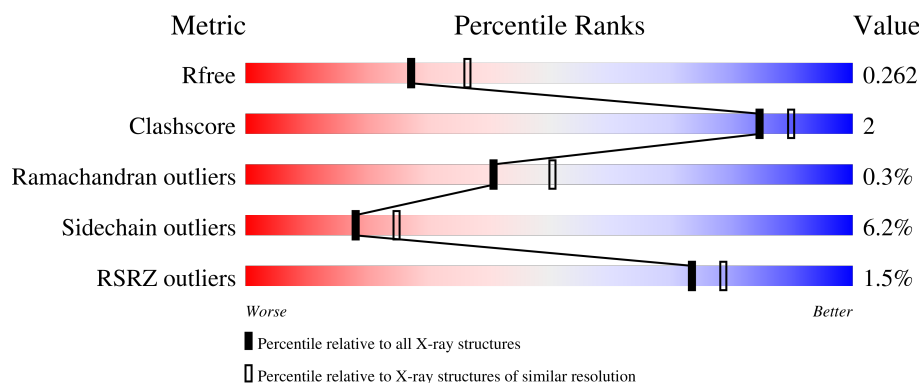
1 Overall quality at a glance

The following experimental techniques were used to determine the structure:

X-RAY DIFFRACTION



The reported resolution of this entry is 2.30 Å.

Percentile scores (ranging between 0-100) for global validation metrics of the entry are shown in the following graphic. The table shows the number of entries on which the scores are based.



Metric	Whole archive (#Entries)	Similar resolution (#Entries, resolution range(Å))
R_{free}	130704	5042 (2.30-2.30)
Clashscore	141614	5643 (2.30-2.30)
Ramachandran outliers	138981	5575 (2.30-2.30)
Sidechain outliers	138945	5575 (2.30-2.30)
RSRZ outliers	127900	4938 (2.30-2.30)

The table below summarises the geometric issues observed across the polymeric chains and their fit to the electron density. The red, orange, yellow and green segments of the lower bar indicate the fraction of residues that contain outliers for ≥ 3 , 2, 1 and 0 types of geometric quality criteria respectively. A grey segment represents the fraction of residues that are not modelled. The numeric value for each fraction is indicated below the corresponding segment, with a dot representing fractions $\leq 5\%$. The upper red bar (where present) indicates the fraction of residues that have poor fit to the electron density. The numeric value is given above the bar.

Mol	Chain	Length	Quality of chain
1	A	493	 89% 9%
1	B	493	 3% 90% 9%

The following table lists non-polymeric compounds, carbohydrate monomers and non-standard residues in protein, DNA, RNA chains that are outliers for geometric or electron-density-fit criteria:

Mol	Type	Chain	Res	Chirality	Geometry	Clashes	Electron density
5	EDO	B	605	-	-	-	X

2 Entry composition [i](#)

There are 6 unique types of molecules in this entry. The entry contains 7915 atoms, of which 0 are hydrogens and 0 are deuteriums.

In the tables below, the ZeroOcc column contains the number of atoms modelled with zero occupancy, the AltConf column contains the number of residues with at least one atom in alternate conformation and the Trace column contains the number of residues modelled with at most 2 atoms.

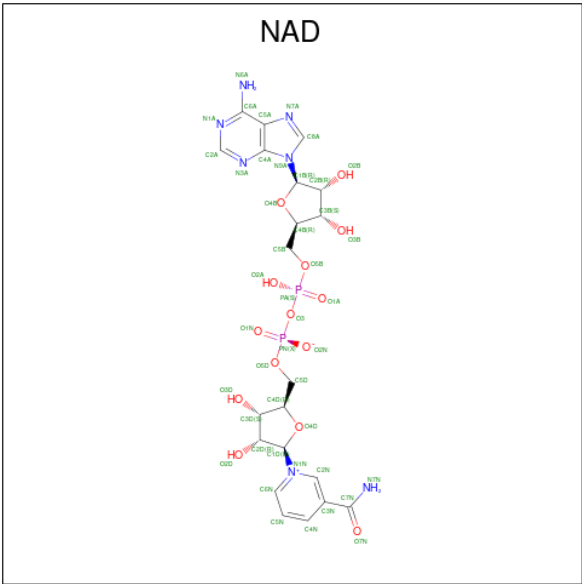
- Molecule 1 is a protein called Aldehyde dehydrogenase X, mitochondrial.

Mol	Chain	Residues	Atoms					ZeroOcc	AltConf	Trace
1	A	493	Total	C	N	O	S	0	0	0
			3844	2443	665	719	17			
1	B	493	Total	C	N	O	S	0	0	0
			3794	2414	654	709	17			

There are 4 discrepancies between the modelled and reference sequences:

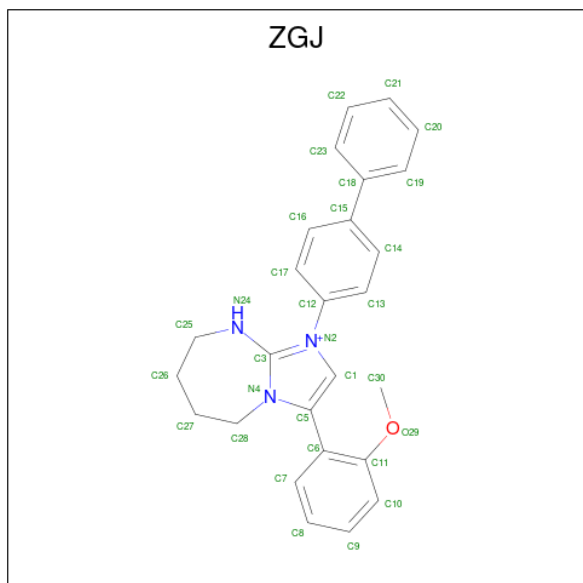
Chain	Residue	Modelled	Actual	Comment	Reference
A	90	ARG	LEU	variant	UNP P30837
A	236	MET	VAL	variant	UNP P30837
B	90	ARG	LEU	variant	UNP P30837
B	236	MET	VAL	variant	UNP P30837

- Molecule 2 is NICOTINAMIDE-ADENINE-DINUCLEOTIDE (three-letter code: NAD) (formula: C₂₁H₂₇N₇O₁₄P₂).



Mol	Chain	Residues	Atoms				ZeroOcc	AltConf
2	A	1	Total	C	N	O	P	
			44	21	7	14	2	
2	B	1	Total	C	N	O	P	
			44	21	7	14	2	

- Molecule 3 is 3-(2-methoxyphenyl)-1-(4-phenylphenyl)-6,7,8,9-tetrahydro-5 {H}-imidazo [1,2-a][1,3]diazepine (three-letter code: ZGJ) (formula: C₂₆H₂₆N₃O) (labeled as "Ligand of Interest" by depositor).



Mol	Chain	Residues	Atoms				ZeroOcc	AltConf
3	A	1	Total	C	N	O		
			30	26	3	1	0	0
3	B	1	Total	C	N	O		
			30	26	3	1	0	0

- Molecule 4 is SODIUM ION (three-letter code: NA) (formula: Na).

Mol	Chain	Residues	Atoms		ZeroOcc	AltConf
4	A	1	Total	Na		
			1	1	0	0
4	B	1	Total	Na		
			1	1	0	0

- Molecule 5 is 1,2-ETHANEDIOL (three-letter code: EDO) (formula: C₂H₆O₂).



Mol	Chain	Residues	Atoms	ZeroOcc	AltConf
5	A	1	Total C O 4 2 2	0	0
5	A	1	Total C O 4 2 2	0	0
5	A	1	Total C O 4 2 2	0	0
5	A	1	Total C O 4 2 2	0	0
5	B	1	Total C O 4 2 2	0	0
5	B	1	Total C O 4 2 2	0	0
5	B	1	Total C O 4 2 2	0	0
5	B	1	Total C O 4 2 2	0	0

- Molecule 6 is water.

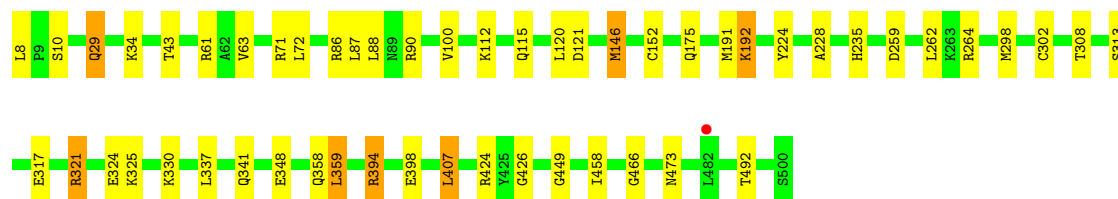
Mol	Chain	Residues	Atoms	ZeroOcc	AltConf
6	A	60	Total O 60 60	0	0
6	B	35	Total O 35 35	0	0

3 Residue-property plots


These plots are drawn for all protein, RNA, DNA and oligosaccharide chains in the entry. The first graphic for a chain summarises the proportions of the various outlier classes displayed in the second graphic. The second graphic shows the sequence view annotated by issues in geometry and electron density. Residues are color-coded according to the number of geometric quality criteria for which they contain at least one outlier: green = 0, yellow = 1, orange = 2 and red = 3 or more. A red dot above a residue indicates a poor fit to the electron density ($RSRZ > 2$). Stretches of 2 or more consecutive residues without any outlier are shown as a green connector. Residues present in the sample, but not in the model, are shown in grey.

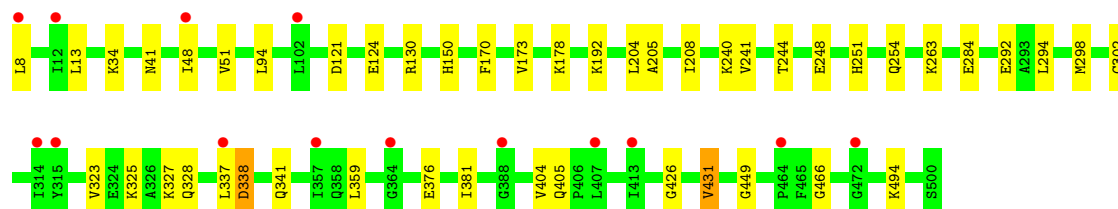
- Molecule 1: Aldehyde dehydrogenase X, mitochondrial

Chain A: 



- Molecule 1: Aldehyde dehydrogenase X, mitochondrial

Chain B: 



4 Data and refinement statistics

Property	Value	Source
Space group	P 32 2 1	Depositor
Cell constants a, b, c, α , β , γ	101.13Å 101.13Å 185.52Å 90.00° 90.00° 120.00°	Depositor
Resolution (Å)	30.58 – 2.30 44.40 – 2.31	Depositor EDS
% Data completeness (in resolution range)	99.6 (30.58-2.30) 99.6 (44.40-2.31)	Depositor EDS
R_{merge}	(Not available)	Depositor
R_{sym}	0.16	Depositor
$\langle I/\sigma(I) \rangle$ ¹	1.88 (at 2.32Å)	Xtriage
Refinement program	REFMAC 5.8.0135	Depositor
R, R_{free}	0.197 , 0.260 0.202 , 0.262	Depositor DCC
R_{free} test set	2484 reflections (5.11%)	wwPDB-VP
Wilson B-factor (Å ²)	47.9	Xtriage
Anisotropy	0.422	Xtriage
Bulk solvent k_{sol} (e/Å ³), B_{sol} (Å ²)	0.35 , 36.3	EDS
L-test for twinning ²	$\langle L \rangle = 0.50$, $\langle L^2 \rangle = 0.33$	Xtriage
Estimated twinning fraction	0.022 for -h,-k,l	Xtriage
F_o, F_c correlation	0.96	EDS
Total number of atoms	7915	wwPDB-VP
Average B, all atoms (Å ²)	56.0	wwPDB-VP

Xtriage's analysis on translational NCS is as follows: *The largest off-origin peak in the Patterson function is 3.61% of the height of the origin peak. No significant pseudotranslation is detected.*

¹Intensities estimated from amplitudes.

²Theoretical values of $\langle |L| \rangle$, $\langle L^2 \rangle$ for acentric reflections are 0.5, 0.333 respectively for untwinned datasets, and 0.375, 0.2 for perfectly twinned datasets.

5 Model quality

5.1 Standard geometry

Bond lengths and bond angles in the following residue types are not validated in this section: NAD, EDO, NA, ZGJ

The Z score for a bond length (or angle) is the number of standard deviations the observed value is removed from the expected value. A bond length (or angle) with $|Z| > 5$ is considered an outlier worth inspection. RMSZ is the root-mean-square of all Z scores of the bond lengths (or angles).

Mol	Chain	Bond lengths		Bond angles	
		RMSZ	# Z >5	RMSZ	# Z >5
1	A	0.49	0/3931	0.72	4/5325 (0.1%)
1	B	0.46	0/3881	0.70	1/5266 (0.0%)
All	All	0.48	0/7812	0.71	5/10591 (0.0%)

There are no bond length outliers.

All (5) bond angle outliers are listed below:

Mol	Chain	Res	Type	Atoms	Z	Observed(°)	Ideal(°)
1	B	431	VAL	CB-CA-C	-5.79	100.39	111.40
1	A	394	ARG	NE-CZ-NH1	5.62	123.11	120.30
1	A	86	ARG	NE-CZ-NH2	5.55	123.08	120.30
1	A	264	ARG	NE-CZ-NH1	5.21	122.90	120.30
1	A	321	ARG	NE-CZ-NH2	5.03	122.82	120.30

There are no chirality outliers.

There are no planarity outliers.

5.2 Too-close contacts

In the following table, the Non-H and H(model) columns list the number of non-hydrogen atoms and hydrogen atoms in the chain respectively. The H(added) column lists the number of hydrogen atoms added and optimized by MolProbity. The Clashes column lists the number of clashes within the asymmetric unit, whereas Symm-Clashes lists symmetry-related clashes.

Mol	Chain	Non-H	H(model)	H(added)	Clashes	Symm-Clashes
1	A	3844	0	3781	21	0
1	B	3794	0	3692	17	0
2	A	44	0	26	3	0
2	B	44	0	26	2	0

Continued on next page...

Continued from previous page...

Mol	Chain	Non-H	H(model)	H(added)	Clashes	Symm-Clashes
3	A	30	0	0	0	0
3	B	30	0	0	1	0
4	A	1	0	0	0	0
4	B	1	0	0	0	0
5	A	16	0	24	2	0
5	B	16	0	24	0	0
6	A	60	0	0	0	0
6	B	35	0	0	0	0
All	All	7915	0	7573	36	0

The all-atom clashscore is defined as the number of clashes found per 1000 atoms (including hydrogen atoms). The all-atom clashscore for this structure is 2.

All (36) close contacts within the same asymmetric unit are listed below, sorted by their clash magnitude.

Atom-1	Atom-2	Interatomic distance (Å)	Clash overlap (Å)
1:B:302:CYS:SG	2:B:601:NAD:C4N	2.73	0.77
1:A:302:CYS:SG	2:A:601:NAD:C4N	2.74	0.75
1:A:100:VAL:HG23	5:A:604:EDO:H12	1.78	0.65
1:A:298:MET:HG3	1:A:341:GLN:HG3	1.81	0.62
1:A:192:LYS:NZ	2:A:601:NAD:O2B	2.33	0.62
1:B:241:VAL:HG23	1:B:263:LYS:HD3	1.87	0.57
1:A:224:TYR:O	1:A:228:ALA:O	2.26	0.53
1:A:146:MET:HE1	1:A:492:THR:CG2	2.38	0.53
1:A:146:MET:HE1	1:A:492:THR:HG23	1.90	0.53
1:B:294:LEU:HD22	1:B:405:GLN:HB2	1.91	0.53
1:A:100:VAL:CG2	5:A:604:EDO:H12	2.42	0.49
1:B:41:ASN:HB2	1:B:48:ILE:HD11	1.94	0.49
1:A:449:GLY:HA3	1:A:466:GLY:O	2.12	0.49
1:A:317:GLU:OE1	1:A:321:ARG:NH2	2.47	0.47
1:B:302:CYS:SG	2:B:601:NAD:C3N	3.02	0.47
1:A:308:THR:HB	1:A:407:LEU:HD12	1.98	0.46
1:A:29:GLN:HG2	1:A:61:ARG:HH12	1.81	0.46
1:A:175:GLN:HG3	1:A:191:MET:SD	2.58	0.44
1:A:262:LEU:HD21	1:B:251:HIS:HA	2.00	0.43
1:B:170:PHE:HB3	1:B:173:VAL:HB	2.00	0.43
1:B:298:MET:HG3	1:B:341:GLN:HG3	2.01	0.43
1:B:205:ALA:HA	1:B:208:ILE:HD12	1.99	0.43
1:B:241:VAL:HG23	1:B:263:LYS:CD	2.49	0.43
1:A:302:CYS:SG	2:A:601:NAD:C3N	3.06	0.43
1:B:337:LEU:O	1:B:338:ASP:HB3	2.18	0.43

Continued on next page...

Continued from previous page...

Atom-1	Atom-2	Interatomic distance (Å)	Clash overlap (Å)
1:B:178:LYS:NZ	1:B:244:THR:OG1	2.39	0.43
1:A:458:ILE:HG21	1:B:150:HIS:CE1	2.54	0.42
1:A:63:VAL:HG11	1:A:235:HIS:CE1	2.55	0.42
1:A:394:ARG:HD2	1:A:398:GLU:OE1	2.19	0.42
1:A:359:LEU:HD11	1:A:394:ARG:CZ	2.50	0.41
1:B:292:GLU:HG2	3:B:602:ZGJ:C18	2.51	0.41
1:A:146:MET:HE3	1:A:152:CYS:HB2	2.03	0.41
1:A:146:MET:CE	1:A:152:CYS:HB2	2.51	0.40
1:B:294:LEU:HD11	1:B:404:VAL:O	2.22	0.40
1:B:449:GLY:HA3	1:B:466:GLY:O	2.21	0.40
1:B:323:VAL:HG12	1:B:327:LYS:HD2	2.03	0.40

There are no symmetry-related clashes.

5.3 Torsion angles [i](#)

5.3.1 Protein backbone [i](#)

In the following table, the Percentiles column shows the percent Ramachandran outliers of the chain as a percentile score with respect to all X-ray entries followed by that with respect to entries of similar resolution.

The Analysed column shows the number of residues for which the backbone conformation was analysed, and the total number of residues.

Mol	Chain	Analysed	Favoured	Allowed	Outliers	Percentiles	
1	A	491/493 (100%)	471 (96%)	19 (4%)	1 (0%)	47	58
1	B	491/493 (100%)	469 (96%)	20 (4%)	2 (0%)	34	42
All	All	982/986 (100%)	940 (96%)	39 (4%)	3 (0%)	41	50

All (3) Ramachandran outliers are listed below:

Mol	Chain	Res	Type
1	B	338	ASP
1	A	426	GLY
1	B	426	GLY

5.3.2 Protein sidechains ⓘ

In the following table, the Percentiles column shows the percent sidechain outliers of the chain as a percentile score with respect to all X-ray entries followed by that with respect to entries of similar resolution.

The Analysed column shows the number of residues for which the sidechain conformation was analysed, and the total number of residues.

Mol	Chain	Analysed	Rotameric	Outliers	Percentiles	
1	A	403/405 (100%)	375 (93%)	28 (7%)	15	20
1	B	391/405 (96%)	370 (95%)	21 (5%)	22	30
All	All	794/810 (98%)	745 (94%)	49 (6%)	18	25

All (49) residues with a non-rotameric sidechain are listed below:

Mol	Chain	Res	Type
1	A	8	LEU
1	A	10	SER
1	A	29	GLN
1	A	34	LYS
1	A	43	THR
1	A	71	ARG
1	A	72	LEU
1	A	87	LEU
1	A	88	LEU
1	A	90	ARG
1	A	112	LYS
1	A	115	GLN
1	A	120	LEU
1	A	121	ASP
1	A	146	MET
1	A	192	LYS
1	A	259	ASP
1	A	313	SER
1	A	324	GLU
1	A	325	LYS
1	A	330	LYS
1	A	337	LEU
1	A	348	GLU
1	A	358	GLN
1	A	359	LEU
1	A	407	LEU
1	A	424	ARG

Continued on next page...

Continued from previous page...

Mol	Chain	Res	Type
1	A	473	ASN
1	B	8	LEU
1	B	13	LEU
1	B	34	LYS
1	B	51	VAL
1	B	94	LEU
1	B	121	ASP
1	B	124	GLU
1	B	130	ARG
1	B	192	LYS
1	B	204	LEU
1	B	240	LYS
1	B	248	GLU
1	B	254	GLN
1	B	284	GLU
1	B	325	LYS
1	B	328	GLN
1	B	359	LEU
1	B	376	GLU
1	B	381	ILE
1	B	431	VAL
1	B	494	LYS

Sometimes sidechains can be flipped to improve hydrogen bonding and reduce clashes. All (5) such sidechains are listed below:

Mol	Chain	Res	Type
1	A	447	GLN
1	A	473	ASN
1	B	254	GLN
1	B	285	HIS
1	B	462	HIS

5.3.3 RNA ⓘ

There are no RNA molecules in this entry.

5.4 Non-standard residues in protein, DNA, RNA chains ⓘ

There are no non-standard protein/DNA/RNA residues in this entry.

5.5 Carbohydrates [i](#)

There are no monosaccharides in this entry.

5.6 Ligand geometry [i](#)

Of 14 ligands modelled in this entry, 2 are monoatomic - leaving 12 for Mogul analysis.

In the following table, the Counts columns list the number of bonds (or angles) for which Mogul statistics could be retrieved, the number of bonds (or angles) that are observed in the model and the number of bonds (or angles) that are defined in the Chemical Component Dictionary. The Link column lists molecule types, if any, to which the group is linked. The Z score for a bond length (or angle) is the number of standard deviations the observed value is removed from the expected value. A bond length (or angle) with $|Z| > 2$ is considered an outlier worth inspection. RMSZ is the root-mean-square of all Z scores of the bond lengths (or angles).

Mol	Type	Chain	Res	Link	Bond lengths			Bond angles		
					Counts	RMSZ	$\# Z > 2$	Counts	RMSZ	$\# Z > 2$
2	NAD	A	601	-	42,48,48	0.90	2 (4%)	50,73,73	1.41	7 (14%)
5	EDO	A	605	-	3,3,3	0.68	0	2,2,2	0.27	0
5	EDO	B	605	-	3,3,3	0.68	0	2,2,2	0.24	0
2	NAD	B	601	-	42,48,48	0.92	2 (4%)	50,73,73	1.43	8 (16%)
5	EDO	B	607	-	3,3,3	0.64	0	2,2,2	0.25	0
5	EDO	A	604	-	3,3,3	0.62	0	2,2,2	0.44	0
5	EDO	B	604	-	3,3,3	0.67	0	2,2,2	0.21	0
3	ZGJ	B	602	-	30,34,34	1.67	4 (13%)	34,47,47	1.98	7 (20%)
5	EDO	B	606	-	3,3,3	0.56	0	2,2,2	0.19	0
5	EDO	A	606	-	3,3,3	0.59	0	2,2,2	0.04	0
3	ZGJ	A	602	-	30,34,34	1.72	3 (10%)	34,47,47	2.25	8 (23%)
5	EDO	A	607	-	3,3,3	0.50	0	2,2,2	0.18	0

In the following table, the Chirals column lists the number of chiral outliers, the number of chiral centers analysed, the number of these observed in the model and the number defined in the Chemical Component Dictionary. Similar counts are reported in the Torsion and Rings columns. '-' means no outliers of that kind were identified.

Mol	Type	Chain	Res	Link	Chirals	Torsions	Rings
2	NAD	A	601	-	-	3/26/62/62	0/5/5/5
5	EDO	A	605	-	-	1/1/1/1	-
5	EDO	B	605	-	-	0/1/1/1	-
2	NAD	B	601	-	-	7/26/62/62	0/5/5/5
5	EDO	B	607	-	-	1/1/1/1	-
5	EDO	A	604	-	-	1/1/1/1	-

Continued on next page...

Continued from previous page...

Mol	Type	Chain	Res	Link	Chirals	Torsions	Rings
5	EDO	B	604	-	-	1/1/1/1	-
3	ZGJ	B	602	-	-	3/14/22/22	0/4/5/5
5	EDO	B	606	-	-	1/1/1/1	-
5	EDO	A	606	-	-	1/1/1/1	-
3	ZGJ	A	602	-	-	1/14/22/22	0/4/5/5
5	EDO	A	607	-	-	0/1/1/1	-

All (11) bond length outliers are listed below:

Mol	Chain	Res	Type	Atoms	Z	Observed(Å)	Ideal(Å)
3	A	602	ZGJ	C12-N2	-6.46	1.36	1.44
3	B	602	ZGJ	C12-N2	-5.84	1.36	1.44
3	A	602	ZGJ	C1-N2	-5.42	1.33	1.39
3	B	602	ZGJ	C1-N2	-5.00	1.33	1.39
2	A	601	NAD	C5A-C4A	2.67	1.48	1.40
2	B	601	NAD	C5A-C4A	2.51	1.47	1.40
3	B	602	ZGJ	C28-N4	-2.46	1.47	1.49
3	A	602	ZGJ	C28-N4	-2.38	1.47	1.49
3	B	602	ZGJ	C6-C5	2.22	1.51	1.48
2	B	601	NAD	O4D-C1D	2.21	1.44	1.41
2	A	601	NAD	O4D-C1D	2.19	1.44	1.41

All (30) bond angle outliers are listed below:

Mol	Chain	Res	Type	Atoms	Z	Observed(°)	Ideal(°)
3	A	602	ZGJ	C30-O29-C11	7.13	128.29	117.53
3	A	602	ZGJ	C27-C28-N4	7.04	116.70	111.18
3	B	602	ZGJ	C13-C12-C17	-5.35	113.40	121.33
3	B	602	ZGJ	C30-O29-C11	5.26	125.47	117.53
3	A	602	ZGJ	C13-C12-C17	-4.73	114.33	121.33
2	A	601	NAD	C3N-C7N-N7N	4.33	122.95	117.75
2	B	601	NAD	C4A-C5A-N7A	-4.23	104.99	109.40
2	B	601	NAD	N3A-C2A-N1A	-4.02	122.40	128.68
3	B	602	ZGJ	C27-C28-N4	3.89	114.23	111.18
3	B	602	ZGJ	C16-C17-C12	3.74	124.51	119.07
2	A	601	NAD	C4A-C5A-N7A	-3.65	105.59	109.40
2	A	601	NAD	C1B-N9A-C4A	-3.54	120.43	126.64
2	A	601	NAD	N3A-C2A-N1A	-3.51	123.19	128.68
2	B	601	NAD	C1B-N9A-C4A	-3.49	120.52	126.64
3	A	602	ZGJ	C17-C12-N2	3.25	123.33	119.41
3	B	602	ZGJ	C17-C12-N2	3.24	123.31	119.41
3	B	602	ZGJ	C13-C12-N2	3.19	123.26	119.41

Continued on next page...

Continued from previous page...

Mol	Chain	Res	Type	Atoms	Z	Observed(°)	Ideal(°)
3	B	602	ZGJ	C14-C13-C12	3.14	123.63	119.07
2	B	601	NAD	C3N-C7N-N7N	3.13	121.51	117.75
3	A	602	ZGJ	C16-C17-C12	3.03	123.48	119.07
3	A	602	ZGJ	C14-C13-C12	2.96	123.37	119.07
2	A	601	NAD	O7N-C7N-N7N	-2.70	118.75	122.58
2	B	601	NAD	O4D-C1D-C2D	-2.57	103.18	106.93
2	A	601	NAD	O4D-C1D-C2D	-2.46	103.33	106.93
3	A	602	ZGJ	C13-C12-N2	2.42	122.33	119.41
2	B	601	NAD	O7N-C7N-N7N	-2.26	119.37	122.58
2	A	601	NAD	O5B-PA-O1A	2.15	117.45	109.07
2	B	601	NAD	O2N-PN-O1N	-2.12	101.76	112.24
2	B	601	NAD	C2A-N1A-C6A	2.02	122.21	118.75
3	A	602	ZGJ	C27-C26-C25	-2.01	109.73	114.12

There are no chirality outliers.

All (20) torsion outliers are listed below:

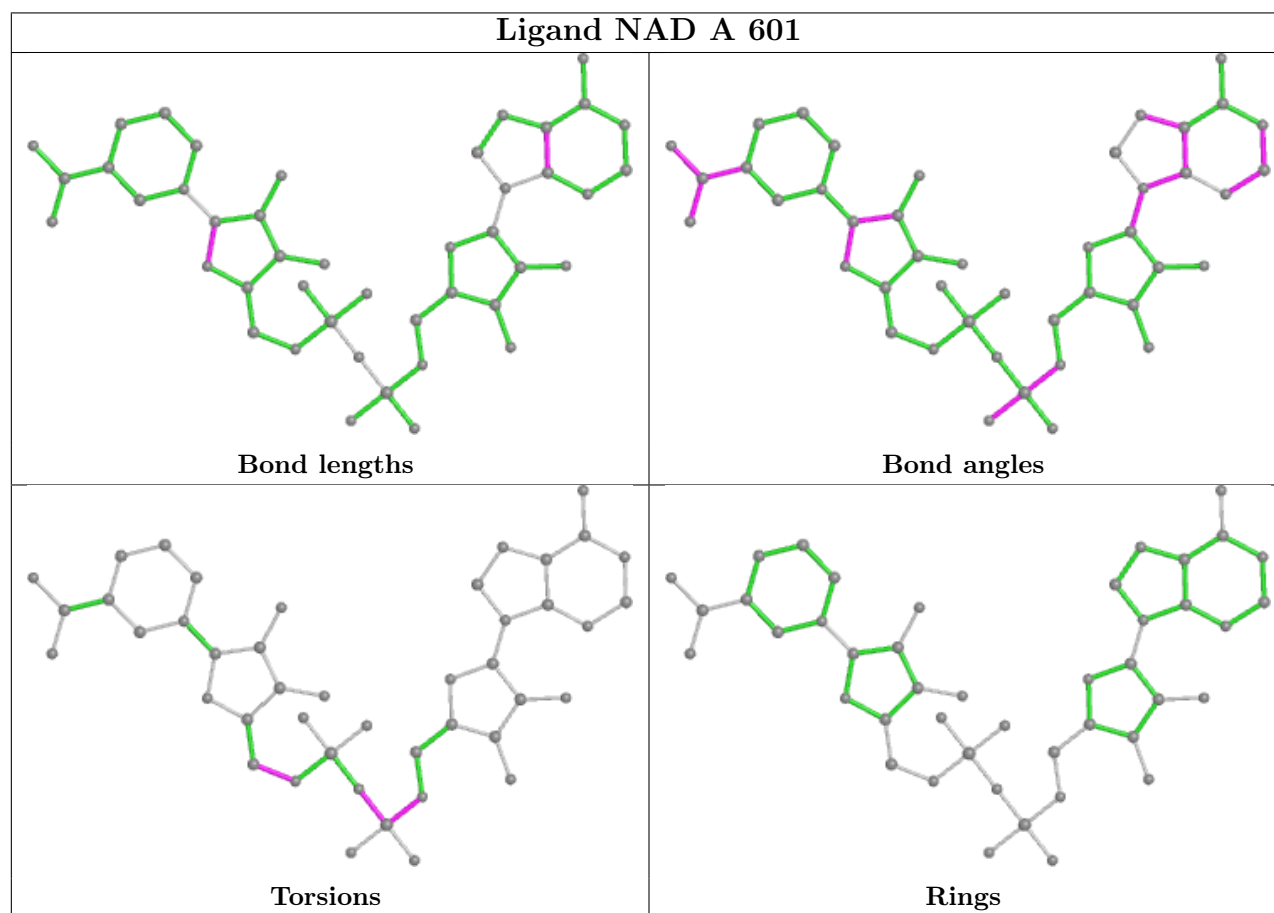
Mol	Chain	Res	Type	Atoms
2	A	601	NAD	PN-O3-PA-O5B
2	B	601	NAD	C5B-O5B-PA-O1A
2	B	601	NAD	C5D-O5D-PN-O1N
2	B	601	NAD	C5D-O5D-PN-O2N
2	B	601	NAD	C4D-C5D-O5D-PN
5	B	607	EDO	O1-C1-C2-O2
5	A	605	EDO	O1-C1-C2-O2
5	B	604	EDO	O1-C1-C2-O2
2	A	601	NAD	C4D-C5D-O5D-PN
5	A	604	EDO	O1-C1-C2-O2
5	A	606	EDO	O1-C1-C2-O2
5	B	606	EDO	O1-C1-C2-O2
3	A	602	ZGJ	C1-C5-C6-C7
3	B	602	ZGJ	C1-C5-C6-C7
2	B	601	NAD	C5D-O5D-PN-O3
3	B	602	ZGJ	C10-C11-O29-C30
2	B	601	NAD	PN-O3-PA-O2A
3	B	602	ZGJ	C6-C11-O29-C30
2	B	601	NAD	PN-O3-PA-O1A
2	A	601	NAD	C5B-O5B-PA-O1A

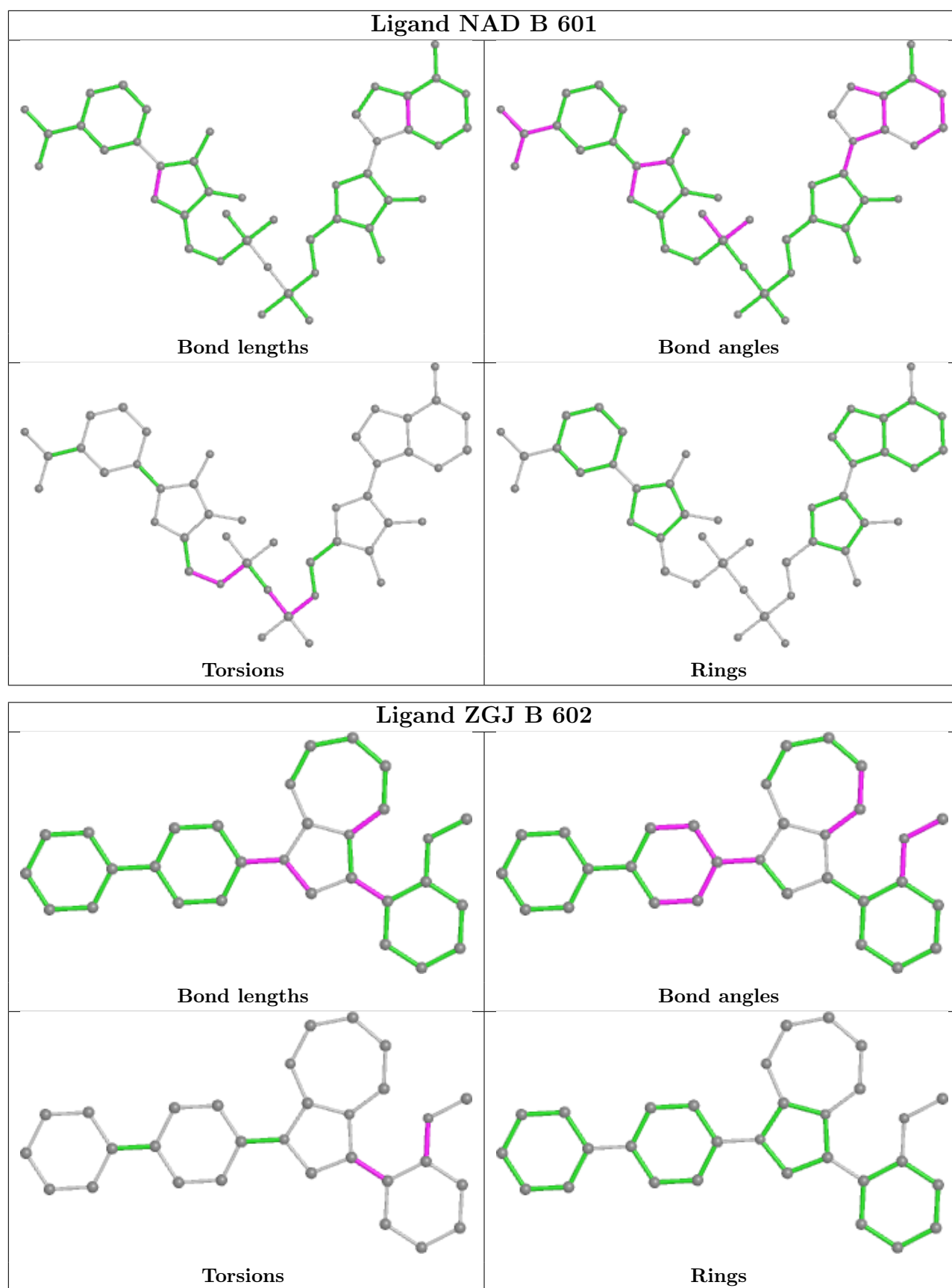
There are no ring outliers.

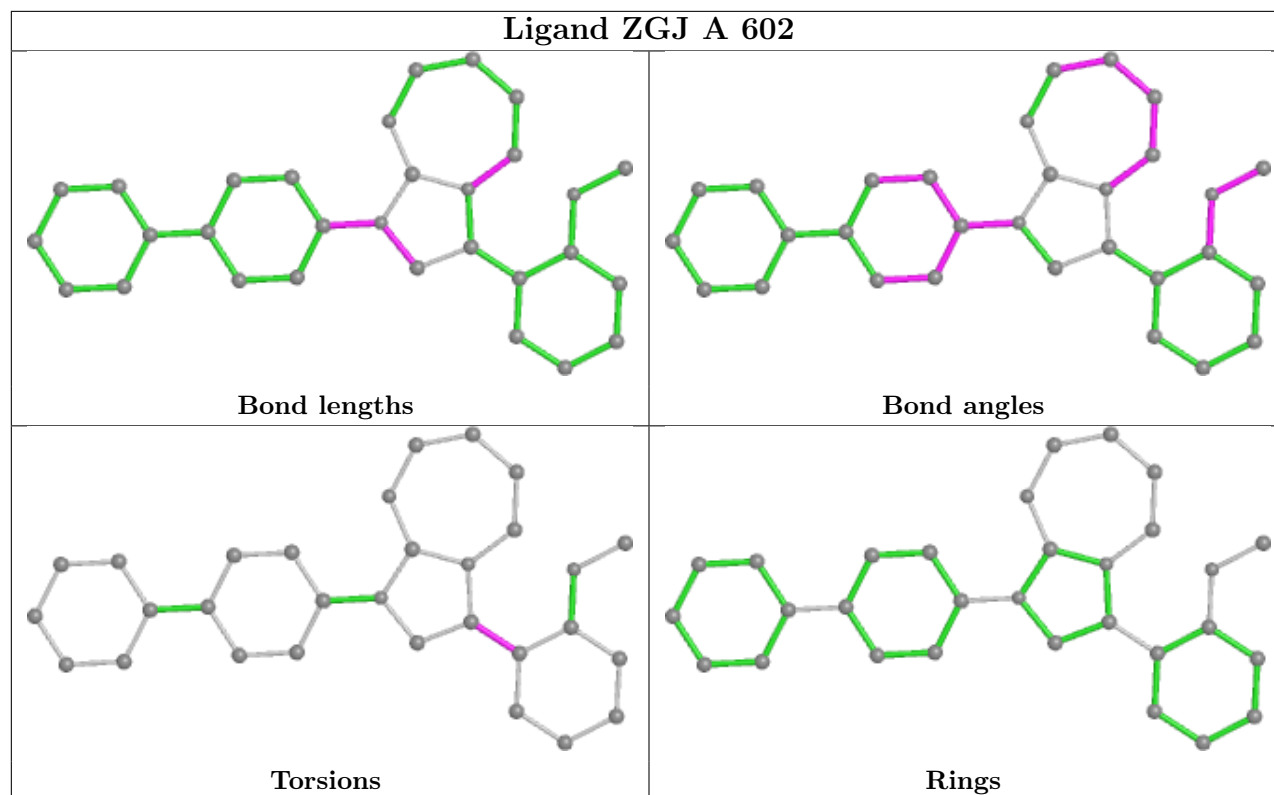
4 monomers are involved in 8 short contacts:

Mol	Chain	Res	Type	Clashes	Symm-Clashes
2	A	601	NAD	3	0
2	B	601	NAD	2	0
5	A	604	EDO	2	0
3	B	602	ZGJ	1	0

The following is a two-dimensional graphical depiction of Mogul quality analysis of bond lengths, bond angles, torsion angles, and ring geometry for all instances of the Ligand of Interest. In addition, ligands with molecular weight > 250 and outliers as shown on the validation Tables will also be included. For torsion angles, if less than 5% of the Mogul distribution of torsion angles is within 10 degrees of the torsion angle in question, then that torsion angle is considered an outlier. Any bond that is central to one or more torsion angles identified as an outlier by Mogul will be highlighted in the graph. For rings, the root-mean-square deviation (RMSD) between the ring in question and similar rings identified by Mogul is calculated over all ring torsion angles. If the average RMSD is greater than 60 degrees and the minimal RMSD between the ring in question and any Mogul-identified rings is also greater than 60 degrees, then that ring is considered an outlier. The outliers are highlighted in purple. The color gray indicates Mogul did not find sufficient equivalents in the CSD to analyse the geometry.







5.7 Other polymers [i](#)

There are no such residues in this entry.

5.8 Polymer linkage issues [i](#)

There are no chain breaks in this entry.

6 Fit of model and data [i](#)

6.1 Protein, DNA and RNA chains [i](#)

In the following table, the column labelled ‘#RSRZ > 2’ contains the number (and percentage) of RSRZ outliers, followed by percent RSRZ outliers for the chain as percentile scores relative to all X-ray entries and entries of similar resolution. The OWAB column contains the minimum, median, 95th percentile and maximum values of the occupancy-weighted average B-factor per residue. The column labelled ‘Q < 0.9’ lists the number of (and percentage) of residues with an average occupancy less than 0.9.

Mol	Chain	Analysed	<RSRZ>	#RSRZ>2	OWAB(Å ²)	Q<0.9
1	A	493/493 (100%)	-0.14	1 (0%) 95 96	37, 51, 68, 83	0
1	B	493/493 (100%)	0.15	14 (2%) 53 60	41, 58, 82, 106	0
All	All	986/986 (100%)	0.00	15 (1%) 73 79	37, 54, 75, 106	0

All (15) RSRZ outliers are listed below:

Mol	Chain	Res	Type	RSRZ
1	B	8	LEU	3.0
1	B	102	LEU	2.9
1	A	482	LEU	2.6
1	B	413	ILE	2.5
1	B	407	LEU	2.5
1	B	315	TYR	2.4
1	B	388	GLY	2.4
1	B	464	PRO	2.3
1	B	472	GLY	2.3
1	B	364	GLY	2.2
1	B	337	LEU	2.1
1	B	12	ILE	2.1
1	B	48	ILE	2.1
1	B	357	ILE	2.1
1	B	314	ILE	2.0

6.2 Non-standard residues in protein, DNA, RNA chains [i](#)

There are no non-standard protein/DNA/RNA residues in this entry.

6.3 Carbohydrates [i](#)

There are no monosaccharides in this entry.

6.4 Ligands ⓘ

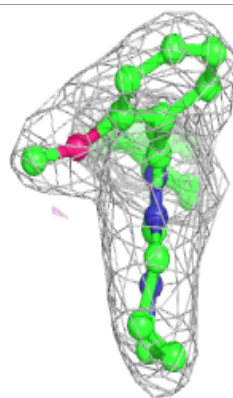
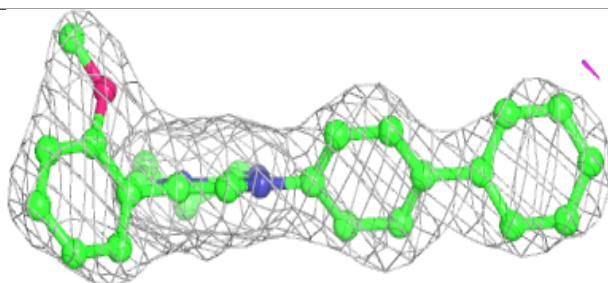
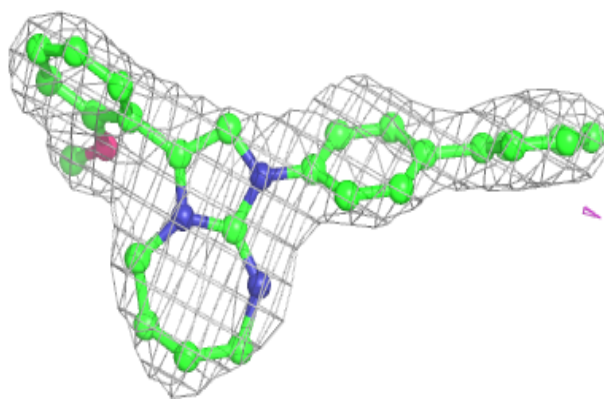
In the following table, the Atoms column lists the number of modelled atoms in the group and the number defined in the chemical component dictionary. The B-factors column lists the minimum, median, 95th percentile and maximum values of B factors of atoms in the group. The column labelled 'Q<0.9' lists the number of atoms with occupancy less than 0.9.

Mol	Type	Chain	Res	Atoms	RSCC	RSR	B-factors(Å ²)	Q<0.9
5	EDO	B	605	4/4	0.69	0.51	67,70,72,72	0
5	EDO	A	606	4/4	0.70	0.26	69,71,73,74	0
5	EDO	A	604	4/4	0.82	0.33	56,65,66,67	0
5	EDO	A	607	4/4	0.84	0.20	67,67,69,69	0
5	EDO	A	605	4/4	0.84	0.33	60,61,63,63	0
5	EDO	B	607	4/4	0.84	0.17	61,61,64,64	0
5	EDO	B	606	4/4	0.93	0.12	58,59,63,64	0
4	NA	A	603	1/1	0.93	0.17	38,38,38,38	0
3	ZGJ	A	602	30/30	0.94	0.14	52,59,64,64	0
4	NA	B	603	1/1	0.94	0.15	46,46,46,46	0
3	ZGJ	B	602	30/30	0.94	0.14	65,69,76,79	0
5	EDO	B	604	4/4	0.95	0.21	54,57,57,59	0
2	NAD	A	601	44/44	0.97	0.11	41,49,53,58	0
2	NAD	B	601	44/44	0.97	0.15	47,54,63,73	0

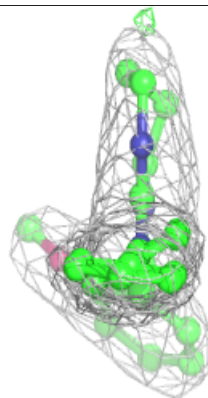
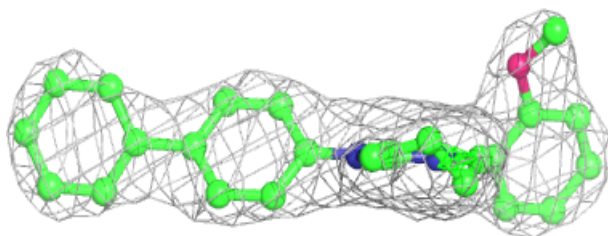
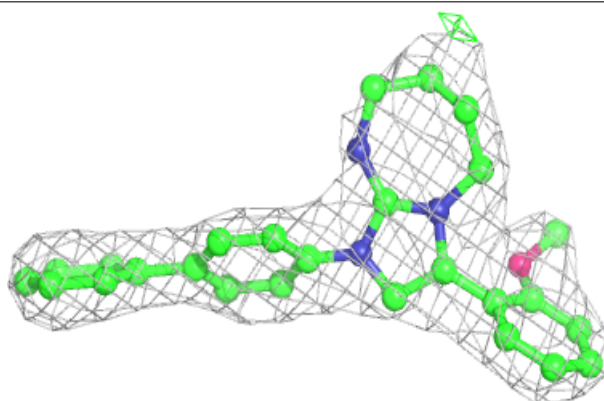
The following is a graphical depiction of the model fit to experimental electron density of all instances of the Ligand of Interest. In addition, ligands with molecular weight > 250 and outliers as shown on the geometry validation Tables will also be included. Each fit is shown from different orientation to approximate a three-dimensional view.

Electron density around ZGJ A 602:

$2mF_o-DF_c$ (at 0.7 rmsd) in gray
 mF_o-DF_c (at 3 rmsd) in purple (negative)
and green (positive)

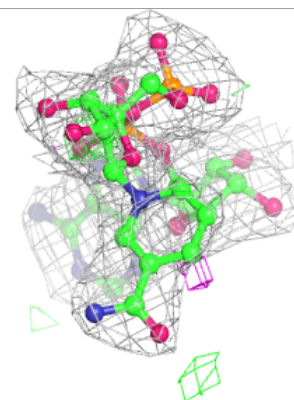
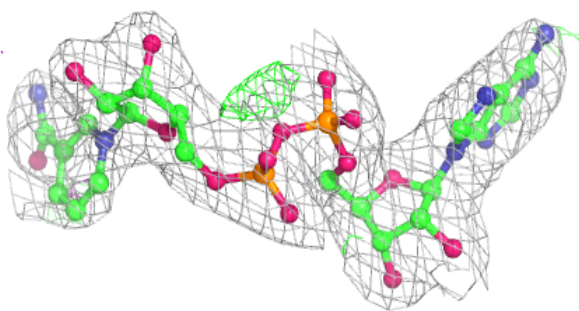
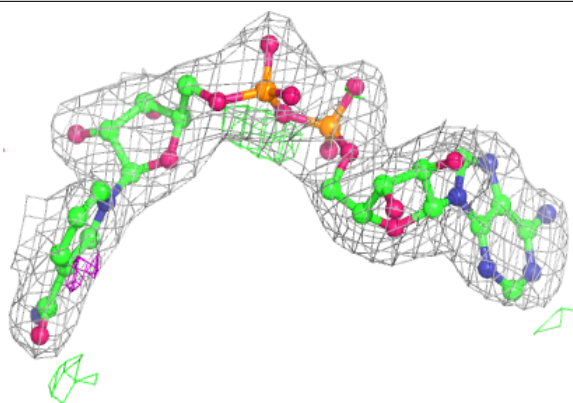
**Electron density around ZGJ B 602:**

$2mF_o-DF_c$ (at 0.7 rmsd) in gray
 mF_o-DF_c (at 3 rmsd) in purple (negative)
and green (positive)

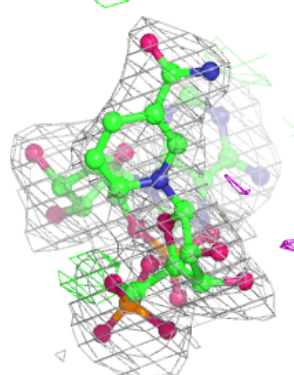
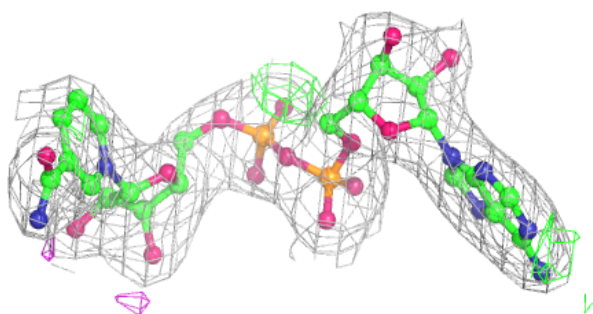
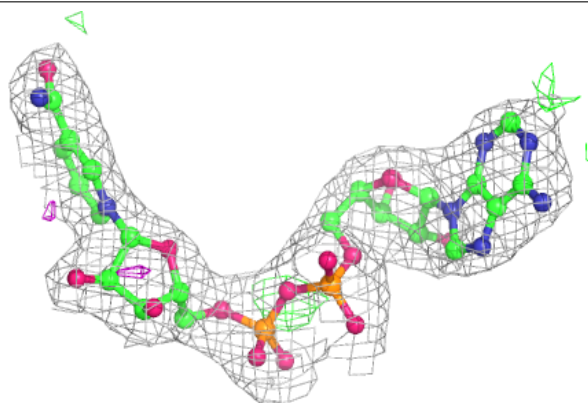


Electron density around NAD A 601:

$2mF_o-DF_c$ (at 0.7 rmsd) in gray
 mF_o-DF_c (at 3 rmsd) in purple (negative)
and green (positive)

**Electron density around NAD B 601:**

$2mF_o-DF_c$ (at 0.7 rmsd) in gray
 mF_o-DF_c (at 3 rmsd) in purple (negative)
and green (positive)



6.5 Other polymers [i](#)

There are no such residues in this entry.