



Full wwPDB X-ray Structure Validation Report ⓘ

May 18, 2020 – 08:40 pm BST

PDB ID : 3RC7
Title : Crystal Structure of the Y186F mutant of KijD10, a 3-ketoreductase from *Actinomadura kijaniata* in complex with TDP-benzene and NADP
Authors : Holden, H.M.; Kubiak, R.L.
Deposited on : 2011-03-30
Resolution : 2.00 Å(reported)

This is a Full wwPDB X-ray Structure Validation Report for a publicly released PDB entry.

We welcome your comments at validation@mail.wwpdb.org

A user guide is available at

<https://www.wwpdb.org/validation/2017/XrayValidationReportHelp>

with specific help available everywhere you see the ⓘ symbol.

The following versions of software and data (see [references ⓘ](#)) were used in the production of this report:

MolProbity : 4.02b-467
Mogul : 1.8.5 (274361), CSD as541be (2020)
Xtriage (Phenix) : 1.13
EDS : 2.11
buster-report : 1.1.7 (2018)
Percentile statistics : 20191225.v01 (using entries in the PDB archive December 25th 2019)
Refmac : 5.8.0158
CCP4 : 7.0.044 (Gargrove)
Ideal geometry (proteins) : Engh & Huber (2001)
Ideal geometry (DNA, RNA) : Parkinson et al. (1996)
Validation Pipeline (wwPDB-VP) : 2.11

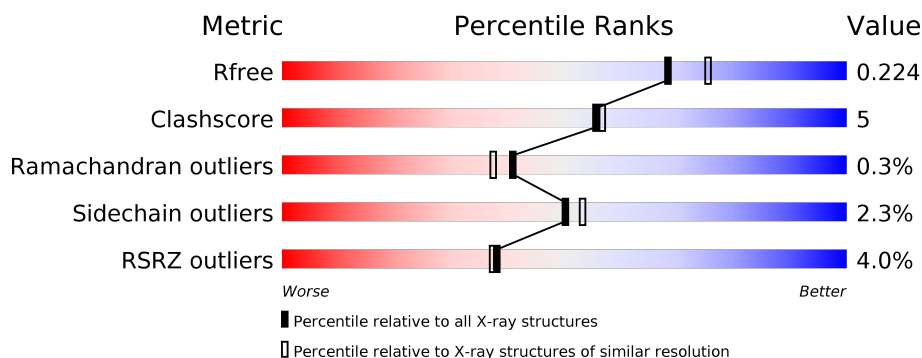
1 Overall quality at a glance

The following experimental techniques were used to determine the structure:

X-RAY DIFFRACTION

The reported resolution of this entry is 2.00 Å.

Percentile scores (ranging between 0-100) for global validation metrics of the entry are shown in the following graphic. The table shows the number of entries on which the scores are based.



Metric	Whole archive (#Entries)	Similar resolution (#Entries, resolution range(Å))
R_{free}	130704	8085 (2.00-2.00)
Clashscore	141614	9178 (2.00-2.00)
Ramachandran outliers	138981	9054 (2.00-2.00)
Sidechain outliers	138945	9053 (2.00-2.00)
RSRZ outliers	127900	7900 (2.00-2.00)

The table below summarises the geometric issues observed across the polymeric chains and their fit to the electron density. The red, orange, yellow and green segments on the lower bar indicate the fraction of residues that contain outliers for ≥ 3 , 2, 1 and 0 types of geometric quality criteria respectively. A grey segment represents the fraction of residues that are not modelled. The numeric value for each fraction is indicated below the corresponding segment, with a dot representing fractions $\leq 5\%$. The upper red bar (where present) indicates the fraction of residues that have poor fit to the electron density. The numeric value is given above the bar.

Mol	Chain	Length	Quality of chain
1	A	350	<div> <div>4%</div> <div>82%</div> <div>9%</div> <div>7%</div> </div>

2 Entry composition

There are 7 unique types of molecules in this entry. The entry contains 2920 atoms, of which 0 are hydrogens and 0 are deuteriums.

In the tables below, the ZeroOcc column contains the number of atoms modelled with zero occupancy, the AltConf column contains the number of residues with at least one atom in alternate conformation and the Trace column contains the number of residues modelled with at most 2 atoms.

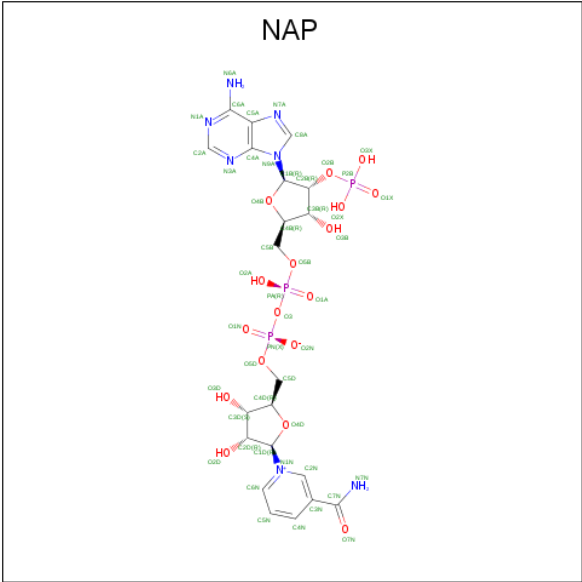
- Molecule 1 is a protein called Sugar 3-ketoreductase.

Mol	Chain	Residues	Atoms					ZeroOcc	AltConf	Trace
1	A	325	Total	C	N	O	S	0	2	0
			2581	1636	475	464	6			

There are 19 discrepancies between the modelled and reference sequences:

Chain	Residue	Modelled	Actual	Comment	Reference
A	-17	MET	-	EXPRESSION TAG	UNP B3TMR8
A	-16	GLY	-	EXPRESSION TAG	UNP B3TMR8
A	-15	SER	-	EXPRESSION TAG	UNP B3TMR8
A	-14	SER	-	EXPRESSION TAG	UNP B3TMR8
A	-13	HIS	-	EXPRESSION TAG	UNP B3TMR8
A	-12	HIS	-	EXPRESSION TAG	UNP B3TMR8
A	-11	HIS	-	EXPRESSION TAG	UNP B3TMR8
A	-10	HIS	-	EXPRESSION TAG	UNP B3TMR8
A	-9	HIS	-	EXPRESSION TAG	UNP B3TMR8
A	-8	HIS	-	EXPRESSION TAG	UNP B3TMR8
A	-7	GLU	-	EXPRESSION TAG	UNP B3TMR8
A	-6	ASN	-	EXPRESSION TAG	UNP B3TMR8
A	-5	LEU	-	EXPRESSION TAG	UNP B3TMR8
A	-4	TYR	-	EXPRESSION TAG	UNP B3TMR8
A	-3	PHE	-	EXPRESSION TAG	UNP B3TMR8
A	-2	GLN	-	EXPRESSION TAG	UNP B3TMR8
A	-1	GLY	-	EXPRESSION TAG	UNP B3TMR8
A	0	HIS	-	EXPRESSION TAG	UNP B3TMR8
A	186	PHE	TYR	ENGINEERED MUTATION	UNP B3TMR8

- Molecule 2 is NADP NICOTINAMIDE-ADENINE-DINUCLEOTIDE PHOSPHATE (three-letter code: NAP) (formula: C₂₁H₂₈N₇O₁₇P₃).



Mol	Chain	Residues	Atoms					ZeroOcc	AltConf
2	A	1	Total	C	N	O	P	0	0
			48	21	7	17	3		

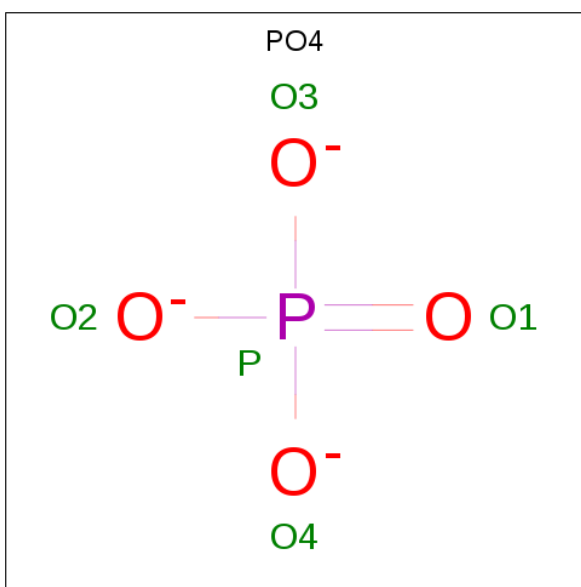
- Molecule 3 is CHLORIDE ION (three-letter code: CL) (formula: Cl).

Mol	Chain	Residues	Atoms		ZeroOcc	AltConf
3	A	2	Total	Cl	0	0
			2	2		

- Molecule 4 is SODIUM ION (three-letter code: NA) (formula: Na).

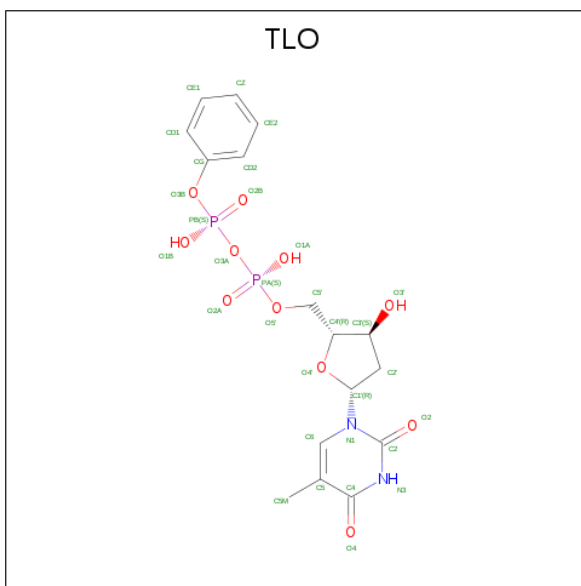
Mol	Chain	Residues	Atoms		ZeroOcc	AltConf
4	A	1	Total	Na	0	0
			1	1		

- Molecule 5 is PHOSPHATE ION (three-letter code: PO4) (formula: O₄P).



Mol	Chain	Residues	Atoms				ZeroOcc	AltConf
5	A	1	Total	O	P		0	0
			5	4	1			

- Molecule 6 is 5'-O-[(S)-hydroxy{[(S)-hydroxy(phenoxy)phosphoryl]oxy}phosphoryl]thymidine (three-letter code: TLO) (formula: C₁₆H₂₀N₂O₁₁P₂).



Mol	Chain	Residues	Atoms				ZeroOcc	AltConf
6	A	1	Total	C	N	O	P	
			31	16	2	11	2	0

- Molecule 7 is water.

Mol	Chain	Residues	Atoms		ZeroOcc	AltConf
7	A	252	Total 252	O 252	0	0

- Molecule 1: Sugar 3-ketoreductase



4 Data and refinement statistics

Property	Value	Source
Space group	I 2 2 2	Depositor
Cell constants a, b, c, α , β , γ	72.82Å 104.22Å 145.52Å 90.00° 90.00° 90.00°	Depositor
Resolution (Å)	65.00 – 2.00 65.12 – 2.00	Depositor EDS
% Data completeness (in resolution range)	97.0 (65.00-2.00) 96.9 (65.12-2.00)	Depositor EDS
R_{merge}	0.08	Depositor
R_{sym}	0.08	Depositor
$\langle I/\sigma(I) \rangle$ ¹	3.02 (at 2.00Å)	Xtriage
Refinement program	REFMAC 5.5.0066	Depositor
R, R_{free}	0.191 , 0.232 0.185 , 0.224	Depositor DCC
R_{free} test set	1835 reflections (5.01%)	wwPDB-VP
Wilson B-factor (Å ²)	14.5	Xtriage
Anisotropy	0.270	Xtriage
Bulk solvent k_{sol} (e/Å ³), B_{sol} (Å ²)	0.38 , 54.9	EDS
L-test for twinning ²	$\langle L \rangle = 0.50$, $\langle L^2 \rangle = 0.34$	Xtriage
Estimated twinning fraction	No twinning to report.	Xtriage
F_o, F_c correlation	0.94	EDS
Total number of atoms	2920	wwPDB-VP
Average B, all atoms (Å ²)	16.0	wwPDB-VP

Xtriage's analysis on translational NCS is as follows: *The largest off-origin peak in the Patterson function is 5.77% of the height of the origin peak. No significant pseudotranslation is detected.*

¹Intensities estimated from amplitudes.

²Theoretical values of $\langle |L| \rangle$, $\langle L^2 \rangle$ for acentric reflections are 0.5, 0.333 respectively for untwinned datasets, and 0.375, 0.2 for perfectly twinned datasets.

5 Model quality [i](#)

5.1 Standard geometry [i](#)

Bond lengths and bond angles in the following residue types are not validated in this section: NA, PO4, TLO, NAP, CL

The Z score for a bond length (or angle) is the number of standard deviations the observed value is removed from the expected value. A bond length (or angle) with $|Z| > 5$ is considered an outlier worth inspection. RMSZ is the root-mean-square of all Z scores of the bond lengths (or angles).

Mol	Chain	Bond lengths		Bond angles	
		RMSZ	$\# Z > 5$	RMSZ	$\# Z > 5$
1	A	0.51	0/2651	1.24	15/3601 (0.4%)

There are no bond length outliers.

All (15) bond angle outliers are listed below:

Mol	Chain	Res	Type	Atoms	Z	Observed(°)	Ideal(°)
1	A	119	ARG	NE-CZ-NH2	-11.96	114.32	120.30
1	A	138	ARG	NE-CZ-NH2	8.60	124.60	120.30
1	A	119	ARG	NE-CZ-NH1	8.58	124.59	120.30
1	A	182	ASP	CB-CG-OD2	-7.46	111.59	118.30
1	A	142	ASP	CB-CG-OD1	7.37	124.93	118.30
1	A	121	ARG	NE-CZ-NH1	7.06	123.83	120.30
1	A	170	ARG	NE-CZ-NH2	-6.91	116.84	120.30
1	A	24	ARG	NE-CZ-NH1	-6.90	116.85	120.30
1	A	138	ARG	NE-CZ-NH1	-6.55	117.02	120.30
1	A	182	ASP	OD1-CG-OD2	6.54	135.72	123.30
1	A	257	ARG	NE-CZ-NH1	-6.42	117.09	120.30
1	A	182	ASP	CB-CG-OD1	-6.34	112.59	118.30
1	A	61	GLU	OE1-CD-OE2	-5.84	116.30	123.30
1	A	306	ARG	NE-CZ-NH2	-5.39	117.61	120.30
1	A	245	GLU	OE1-CD-OE2	-5.03	117.26	123.30

There are no chirality outliers.

There are no planarity outliers.

5.2 Too-close contacts [i](#)

In the following table, the Non-H and H(model) columns list the number of non-hydrogen atoms and hydrogen atoms in the chain respectively. The H(added) column lists the number of hydrogen

atoms added and optimized by MolProbity. The Clashes column lists the number of clashes within the asymmetric unit, whereas Symm-Clashes lists symmetry related clashes.

Mol	Chain	Non-H	H(model)	H(added)	Clashes	Symm-Clashes
1	A	2581	0	2542	21	0
2	A	48	0	25	8	0
3	A	2	0	0	0	0
4	A	1	0	0	0	0
5	A	5	0	0	0	0
6	A	31	0	18	2	0
7	A	252	0	0	2	0
All	All	2920	0	2585	27	0

The all-atom clashscore is defined as the number of clashes found per 1000 atoms (including hydrogen atoms). The all-atom clashscore for this structure is 5.

All (27) close contacts within the same asymmetric unit are listed below, sorted by their clash magnitude.

Atom-1	Atom-2	Interatomic distance (Å)	Clash overlap (Å)
1:A:170:ARG:NH2	2:A:333:NAP:O7N	2.04	0.91
2:A:333:NAP:C7N	2:A:333:NAP:O2N	2.25	0.84
1:A:169:ILE:O	1:A:176:GLY:HA3	1.88	0.71
2:A:333:NAP:H2N	2:A:333:NAP:O5D	1.92	0.69
1:A:20:ILE:HD11	1:A:24:ARG:HG3	1.87	0.57
2:A:333:NAP:O7N	2:A:333:NAP:O2N	2.23	0.55
1:A:172:GLN:NE2	1:A:175:VAL:HG21	2.27	0.50
2:A:333:NAP:H4N	6:A:337:TLO:O3B	2.13	0.49
1:A:166:GLN:NE2	1:A:212:ARG:NH1	2.60	0.49
1:A:138:ARG:O	1:A:138:ARG:HD3	2.13	0.49
1:A:170:ARG:O	1:A:214:VAL:HG21	2.14	0.48
1:A:164:LYS:HE3	7:A:530:HOH:O	2.14	0.47
1:A:11:ARG:HB3	1:A:38:THR:HG21	1.96	0.47
1:A:63:TYR:OH	2:A:333:NAP:H8A	2.16	0.46
1:A:166:GLN:HA	1:A:166:GLN:HE21	1.80	0.46
1:A:181:LEU:HD23	1:A:181:LEU:HA	1.63	0.46
1:A:293:ARG:O	1:A:297:GLN:HG3	2.17	0.45
2:A:333:NAP:H4N	6:A:337:TLO:CG	2.47	0.45
1:A:161:ILE:O	1:A:236:MET:HA	2.16	0.44
1:A:110:GLN:NE2	1:A:113:ARG:HH11	2.16	0.43
2:A:333:NAP:H2N	2:A:333:NAP:PN	2.59	0.42
1:A:121:ARG:HG3	1:A:121:ARG:HH11	1.84	0.42
1:A:314:ARG:HD2	7:A:375:HOH:O	2.19	0.41
1:A:110:GLN:NE2	1:A:113:ARG:NH1	2.69	0.41

Continued on next page...

Continued from previous page...

Atom-1	Atom-2	Interatomic distance (Å)	Clash overlap (Å)
1:A:20:ILE:HA	1:A:20:ILE:HD12	1.93	0.41
1:A:331:PHE:HB2	1:A:332:PRO:HA	2.02	0.41

There are no symmetry-related clashes.

5.3 Torsion angles [i](#)

5.3.1 Protein backbone [i](#)

In the following table, the Percentiles column shows the percent Ramachandran outliers of the chain as a percentile score with respect to all X-ray entries followed by that with respect to entries of similar resolution.

The Analysed column shows the number of residues for which the backbone conformation was analysed, and the total number of residues.

Mol	Chain	Analysed	Favoured	Allowed	Outliers	Percentiles	
1	A	325/350 (93%)	317 (98%)	7 (2%)	1 (0%)	41	37

All (1) Ramachandran outliers are listed below:

Mol	Chain	Res	Type
1	A	175	VAL

5.3.2 Protein sidechains [i](#)

In the following table, the Percentiles column shows the percent sidechain outliers of the chain as a percentile score with respect to all X-ray entries followed by that with respect to entries of similar resolution.

The Analysed column shows the number of residues for which the sidechain conformation was analysed, and the total number of residues.

Mol	Chain	Analysed	Rotameric	Outliers	Percentiles	
1	A	262/281 (93%)	256 (98%)	6 (2%)	50	53

All (6) residues with a non-rotameric sidechain are listed below:

Mol	Chain	Res	Type
1	A	102	LYS

Continued on next page...

Continued from previous page...

Mol	Chain	Res	Type
1	A	159	PHE
1	A	166	GLN
1	A	174	ASP
1	A	182	ASP
1	A	244	TYR

Some sidechains can be flipped to improve hydrogen bonding and reduce clashes. All (4) such sidechains are listed below:

Mol	Chain	Res	Type
1	A	110	GLN
1	A	166	GLN
1	A	172	GLN
1	A	297	GLN

5.3.3 RNA [i](#)

There are no RNA molecules in this entry.

5.4 Non-standard residues in protein, DNA, RNA chains [i](#)

There are no non-standard protein/DNA/RNA residues in this entry.

5.5 Carbohydrates [i](#)

There are no carbohydrates in this entry.

5.6 Ligand geometry [i](#)

Of 6 ligands modelled in this entry, 3 are monoatomic - leaving 3 for Mogul analysis.

In the following table, the Counts columns list the number of bonds (or angles) for which Mogul statistics could be retrieved, the number of bonds (or angles) that are observed in the model and the number of bonds (or angles) that are defined in the Chemical Component Dictionary. The Link column lists molecule types, if any, to which the group is linked. The Z score for a bond length (or angle) is the number of standard deviations the observed value is removed from the expected value. A bond length (or angle) with $|Z| > 2$ is considered an outlier worth inspection. RMSZ is the root-mean-square of all Z scores of the bond lengths (or angles).

Mol	Type	Chain	Res	Link	Bond lengths			Bond angles		
					Counts	RMSZ	# Z > 2	Counts	RMSZ	# Z > 2
2	NAP	A	333	-	45,52,52	0.73	1 (2%)	56,80,80	1.78	10 (17%)
5	PO4	A	336	-	4,4,4	0.77	0	6,6,6	1.92	2 (33%)
6	TLO	A	337	-	28,33,33	0.77	0	33,49,49	2.00	9 (27%)

In the following table, the Chirals column lists the number of chiral outliers, the number of chiral centers analysed, the number of these observed in the model and the number defined in the Chemical Component Dictionary. Similar counts are reported in the Torsion and Rings columns. '-' means no outliers of that kind were identified.

Mol	Type	Chain	Res	Link	Chirals	Torsions	Rings
2	NAP	A	333	-	-	8/31/67/67	0/5/5/5
6	TLO	A	337	-	-	1/18/33/33	0/3/3/3

All (1) bond length outliers are listed below:

Mol	Chain	Res	Type	Atoms	Z	Observed(Å)	Ideal(Å)
2	A	333	NAP	O4D-C1D	2.29	1.44	1.41

All (21) bond angle outliers are listed below:

Mol	Chain	Res	Type	Atoms	Z	Observed(°)	Ideal(°)
2	A	333	NAP	C3N-C7N-N7N	6.81	125.92	117.75
6	A	337	TLO	C4-N3-C2	6.24	120.41	115.14
2	A	333	NAP	N3A-C2A-N1A	-5.18	120.59	128.68
2	A	333	NAP	O7N-C7N-C3N	-4.50	114.24	119.63
6	A	337	TLO	C2'-C3'-C4'	4.10	111.31	102.76
2	A	333	NAP	O2B-C2B-C1B	-3.28	98.30	110.10
6	A	337	TLO	CZ-CE2-CD2	-3.15	115.39	120.19
6	A	337	TLO	O1B-PB-O3B	3.13	114.36	104.14
5	A	336	PO4	O4-P-O2	2.97	117.51	107.97
6	A	337	TLO	O1B-PB-O2B	2.78	126.00	112.24
2	A	333	NAP	C2A-N1A-C6A	2.63	123.25	118.75
6	A	337	TLO	CE1-CD1-CG	-2.55	114.87	118.96
2	A	333	NAP	O2A-PA-O1A	2.41	124.14	112.24
2	A	333	NAP	O3X-P2B-O1X	2.40	120.09	110.68
2	A	333	NAP	N6A-C6A-N1A	2.27	123.30	118.57
5	A	336	PO4	O3-P-O1	2.26	119.16	110.89
2	A	333	NAP	O5D-PN-O1N	2.22	117.74	109.07
6	A	337	TLO	CE2-CD2-CG	2.07	122.28	118.96
6	A	337	TLO	O3'-C3'-C4'	-2.07	102.18	110.10
2	A	333	NAP	C3B-C2B-C1B	2.07	106.78	102.89

Continued on next page...

Continued from previous page...

Mol	Chain	Res	Type	Atoms	Z	Observed(°)	Ideal(°)
6	A	337	TLO	O3B-PB-O2B	-2.05	103.13	109.45

There are no chirality outliers.

All (9) torsion outliers are listed below:

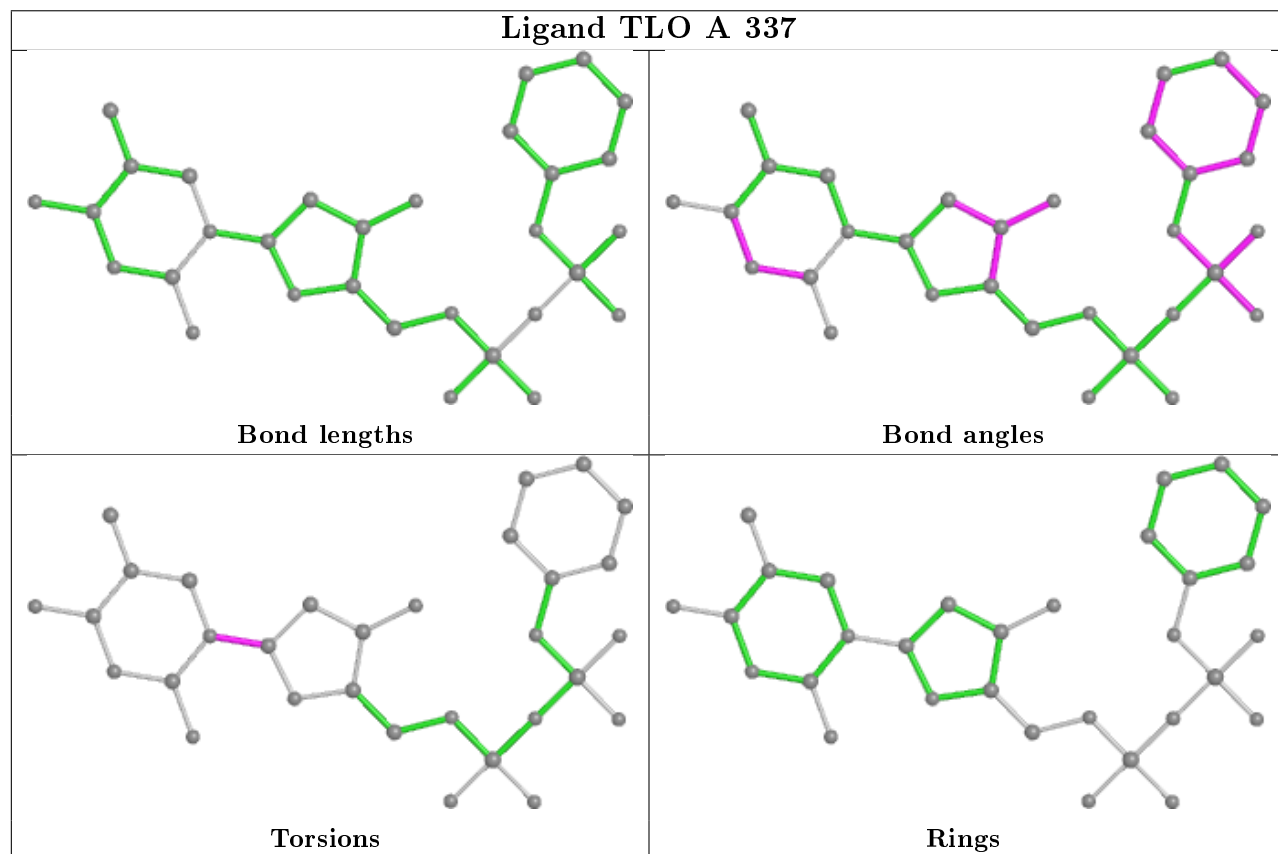
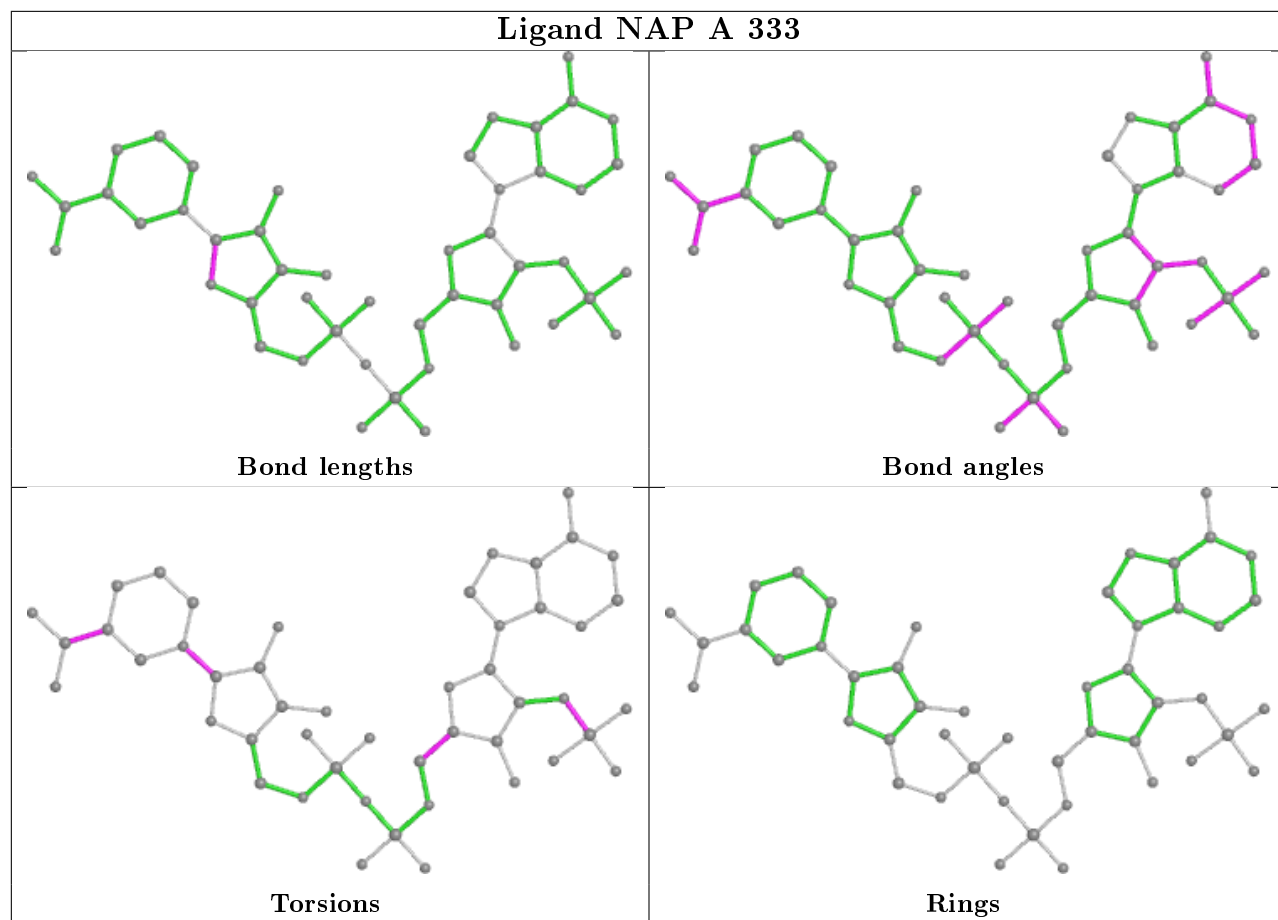
Mol	Chain	Res	Type	Atoms
6	A	337	TLO	O4'-C1'-N1-C6
2	A	333	NAP	C2B-O2B-P2B-O1X
2	A	333	NAP	O4D-C1D-N1N-C2N
2	A	333	NAP	C2N-C3N-C7N-O7N
2	A	333	NAP	C2N-C3N-C7N-N7N
2	A	333	NAP	C4N-C3N-C7N-O7N
2	A	333	NAP	C4N-C3N-C7N-N7N
2	A	333	NAP	O4B-C4B-C5B-O5B
2	A	333	NAP	C2B-O2B-P2B-O3X

There are no ring outliers.

2 monomers are involved in 8 short contacts:

Mol	Chain	Res	Type	Clashes	Symm-Clashes
2	A	333	NAP	8	0
6	A	337	TLO	2	0

The following is a two-dimensional graphical depiction of Mogul quality analysis of bond lengths, bond angles, torsion angles, and ring geometry for all instances of the Ligand of Interest. In addition, ligands with molecular weight > 250 and outliers as shown on the validation Tables will also be included. For torsion angles, if less than 5% of the Mogul distribution of torsion angles is within 10 degrees of the torsion angle in question, then that torsion angle is considered an outlier. Any bond that is central to one or more torsion angles identified as an outlier by Mogul will be highlighted in the graph. For rings, the root-mean-square deviation (RMSD) between the ring in question and similar rings identified by Mogul is calculated over all ring torsion angles. If the average RMSD is greater than 60 degrees and the minimal RMSD between the ring in question and any Mogul-identified rings is also greater than 60 degrees, then that ring is considered an outlier. The outliers are highlighted in purple. The color gray indicates Mogul did not find sufficient equivalents in the CSD to analyse the geometry.



5.7 Other polymers

There are no such residues in this entry.

5.8 Polymer linkage issues

There are no chain breaks in this entry.

6 Fit of model and data [i](#)

6.1 Protein, DNA and RNA chains [i](#)

In the following table, the column labelled ‘#RSRZ> 2’ contains the number (and percentage) of RSRZ outliers, followed by percent RSRZ outliers for the chain as percentile scores relative to all X-ray entries and entries of similar resolution. The OWAB column contains the minimum, median, 95th percentile and maximum values of the occupancy-weighted average B-factor per residue. The column labelled ‘Q< 0.9’ lists the number of (and percentage) of residues with an average occupancy less than 0.9.

Mol	Chain	Analysed	<RSRZ>	#RSRZ>2	OWAB(Å ²)	Q<0.9
1	A	325/350 (92%)	-0.11	13 (4%) 38 37	5, 13, 38, 58	0

All (13) RSRZ outliers are listed below:

Mol	Chain	Res	Type	RSRZ
1	A	176	GLY	7.2
1	A	171	TYR	5.4
1	A	169	ILE	5.2
1	A	167	GLY	5.1
1	A	174	ASP	4.3
1	A	166	GLN	3.7
1	A	177	GLY	3.5
1	A	172	GLN	3.4
1	A	173	ALA	3.2
1	A	175	VAL	3.0
1	A	168	ASP	2.4
1	A	165	PRO	2.2
1	A	332	PRO	2.1

6.2 Non-standard residues in protein, DNA, RNA chains [i](#)

There are no non-standard protein/DNA/RNA residues in this entry.

6.3 Carbohydrates [i](#)

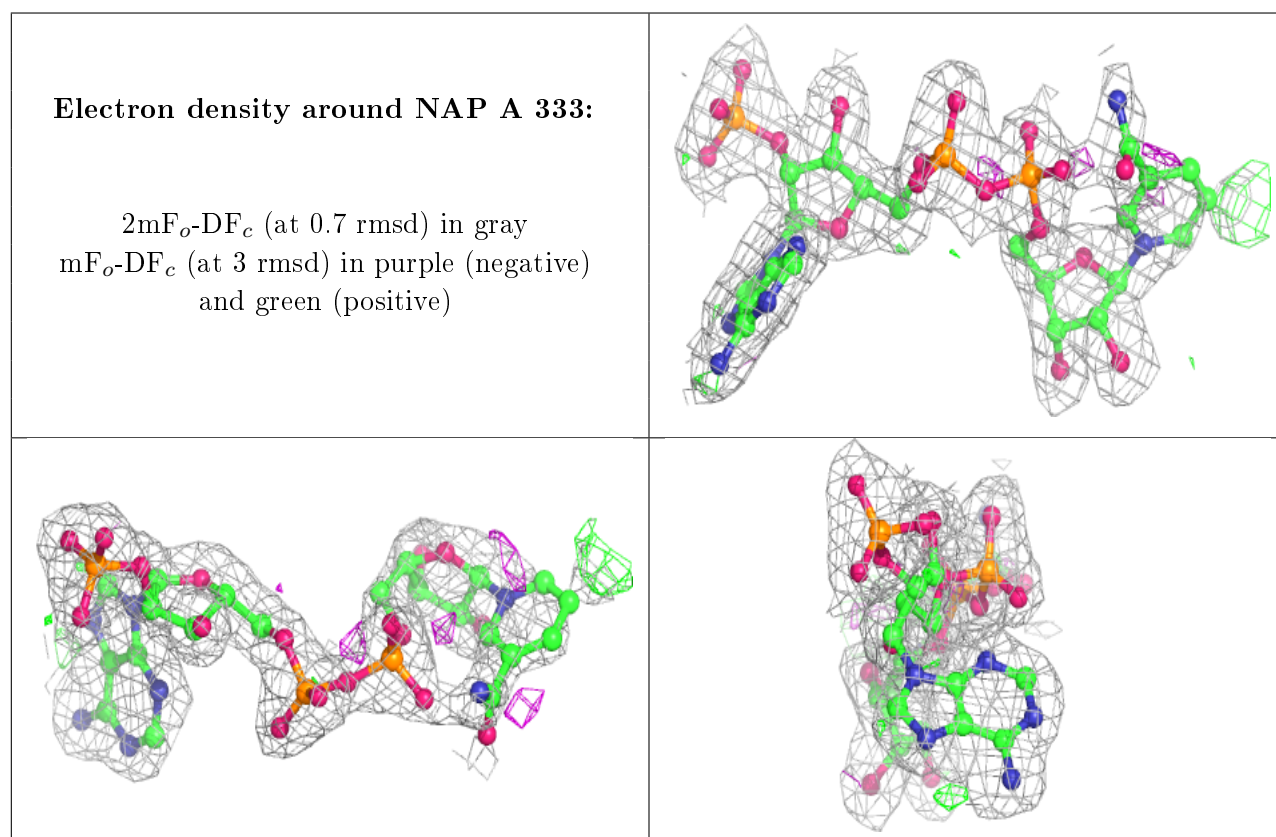
There are no carbohydrates in this entry.

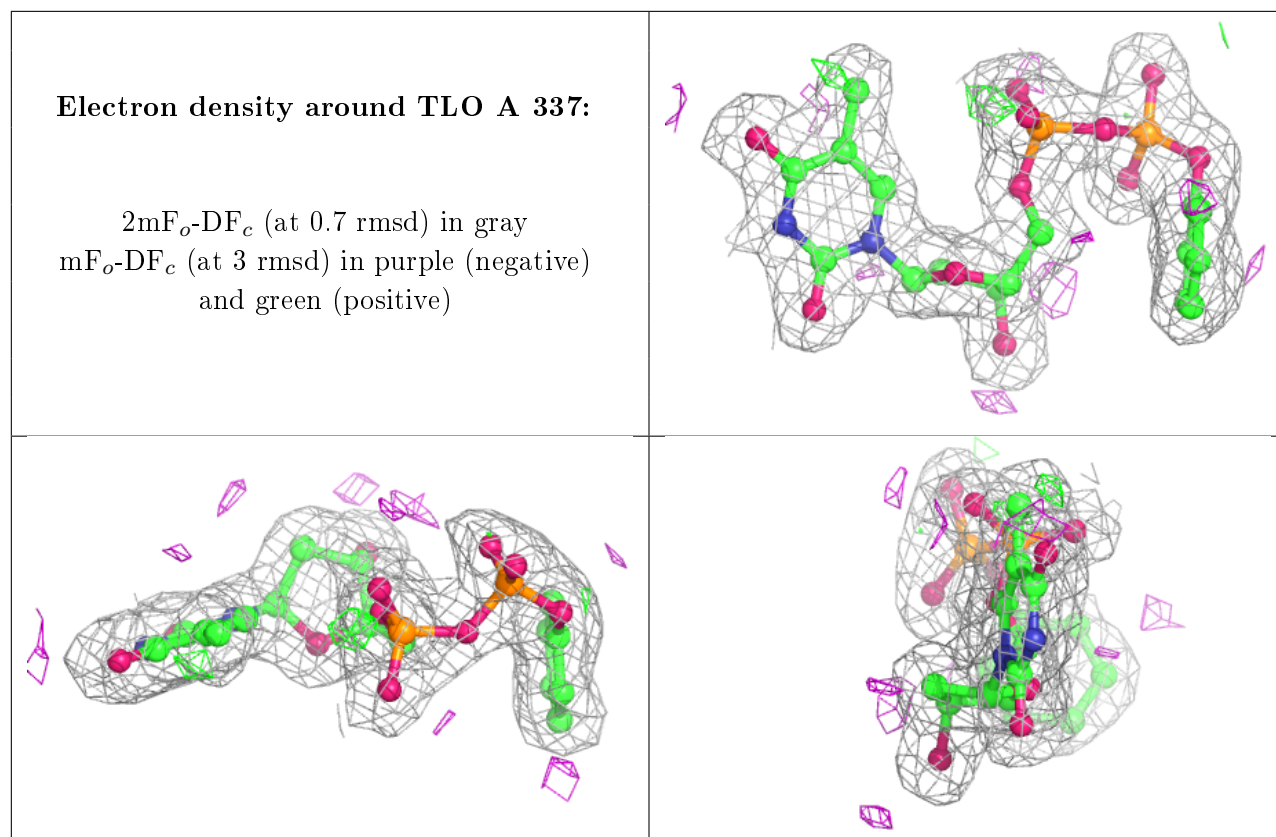
6.4 Ligands ⓘ

In the following table, the Atoms column lists the number of modelled atoms in the group and the number defined in the chemical component dictionary. The B-factors column lists the minimum, median, 95th percentile and maximum values of B factors of atoms in the group. The column labelled 'Q<0.9' lists the number of atoms with occupancy less than 0.9.

Mol	Type	Chain	Res	Atoms	RSCC	RSR	B-factors(Å ²)	Q<0.9
5	PO4	A	336	5/5	0.94	0.12	27,41,42,46	0
2	NAP	A	333	48/48	0.95	0.16	15,25,51,58	0
4	NA	A	335	1/1	0.97	0.13	12,12,12,12	0
3	CL	A	334	1/1	0.97	0.23	42,42,42,42	0
6	TLO	A	337	31/31	0.98	0.11	7,12,24,25	0
3	CL	A	338	1/1	0.99	0.09	15,15,15,15	0

The following is a graphical depiction of the model fit to experimental electron density of all instances of the Ligand of Interest. In addition, ligands with molecular weight > 250 and outliers as shown on the geometry validation Tables will also be included. Each fit is shown from different orientation to approximate a three-dimensional view.





6.5 Other polymers [i](#)

There are no such residues in this entry.