



wwPDB X-ray Structure Validation Summary Report ⓘ

Aug 7, 2020 – 10:26 AM BST

PDB ID : 4RCR
Title : STRUCTURE OF THE REACTION CENTER FROM RHODOBACTER SPHAEROIDES R-26 AND 2.4.1: PROTEIN-COFACTOR (BACTERIOCHLOROPHYLL, BACTERIOPHEOPHYTIN, AND CAROTENOID) INTERACTIONS
Authors : Komiya, H.; Yeates, T.O.; Chirino, A.J.; Rees, D.C.; Allen, J.P.; Feher, G.
Deposited on : 1991-09-09
Resolution : 2.80 Å(reported)

This is a wwPDB X-ray Structure Validation Summary Report for a publicly released PDB entry.

We welcome your comments at validation@mail.wwpdb.org

A user guide is available at

<https://www.wwpdb.org/validation/2017/XrayValidationReportHelp>

with specific help available everywhere you see the ⓘ symbol.

The following versions of software and data (see [references ⓘ](#)) were used in the production of this report:

MolProbity : 4.02b-467
Mogul : 1.8.5 (274361), CSD as541be (2020)
Xtriage (Phenix) : **NOT EXECUTED**
EDS : **NOT EXECUTED**
buster-report : 1.1.7 (2018)
Percentile statistics : 20191225.v01 (using entries in the PDB archive December 25th 2019)
Ideal geometry (proteins) : Engh & Huber (2001)
Ideal geometry (DNA, RNA) : Parkinson et al. (1996)
Validation Pipeline (wwPDB-VP) : 2.13.1

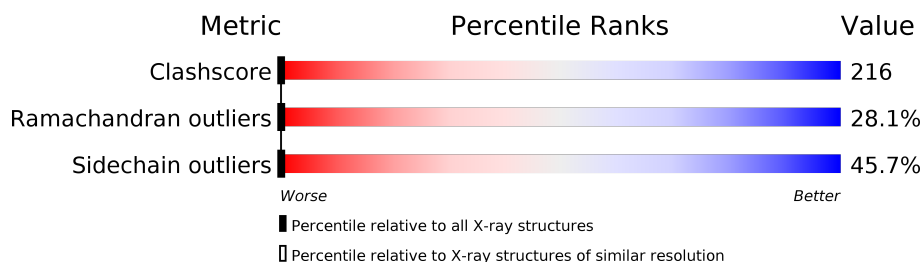
1 Overall quality at a glance

The following experimental techniques were used to determine the structure:

X-RAY DIFFRACTION

The reported resolution of this entry is 2.80 Å.

Percentile scores (ranging between 0-100) for global validation metrics of the entry are shown in the following graphic. The table shows the number of entries on which the scores are based.



Metric	Whole archive (#Entries)	Similar resolution (#Entries, resolution range(Å))
Clashscore	141614	3569 (2.80-2.80)
Ramachandran outliers	138981	3498 (2.80-2.80)
Sidechain outliers	138945	3500 (2.80-2.80)

The table below summarises the geometric issues observed across the polymeric chains and their fit to the electron density. The red, orange, yellow and green segments on the lower bar indicate the fraction of residues that contain outliers for ≥ 3 , 2, 1 and 0 types of geometric quality criteria respectively. A grey segment represents the fraction of residues that are not modelled. The numeric value for each fraction is indicated below the corresponding segment, with a dot representing fractions $\leq 5\%$.

Note EDS was not executed.

Mol	Chain	Length	Quality of chain
1	L	281	
2	M	307	
3	H	260	

The following table lists non-polymeric compounds, carbohydrate monomers and non-standard residues in protein, DNA, RNA chains that are outliers for geometric or electron-density-fit criteria:

Mol	Type	Chain	Res	Chirality	Geometry	Clashes	Electron density
4	BCL	L	283	-	-	X	-
4	BCL	M	310	-	-	X	-

Continued on next page...

Continued from previous page...

Mol	Type	Chain	Res	Chirality	Geometry	Clashes	Electron density
4	BCL	M	311	-	-	X	-
5	BPH	L	284	-	-	X	-
5	BPH	M	312	-	-	X	-
6	U10	L	285	-	-	X	-
6	U10	M	313	-	-	X	-
7	BOG	M	308	X	-	-	-

2 Entry composition [i](#)

There are 8 unique types of molecules in this entry. The entry contains 6764 atoms, of which 0 are hydrogens and 0 are deuteriums.

In the tables below, the ZeroOcc column contains the number of atoms modelled with zero occupancy, the AltConf column contains the number of residues with at least one atom in alternate conformation and the Trace column contains the number of residues modelled with at most 2 atoms.

- Molecule 1 is a protein called PHOTOSYNTHETIC REACTION CENTER.

Mol	Chain	Residues	Atoms					ZeroOcc	AltConf	Trace
1	L	266	Total	C	N	O	S	0	0	0
			2120	1433	336	343	8			

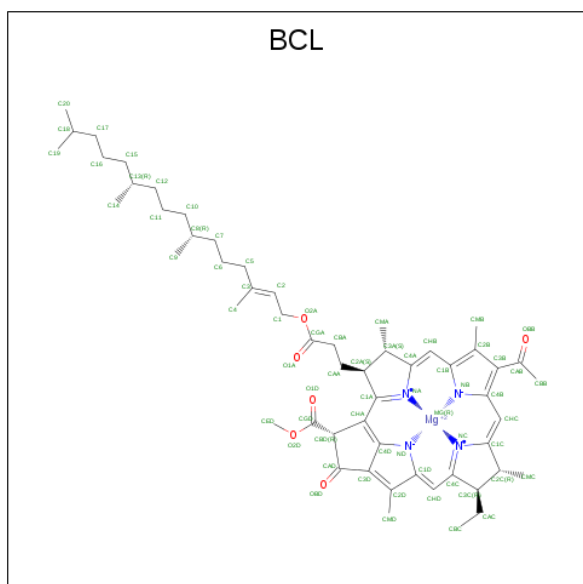
- Molecule 2 is a protein called PHOTOSYNTHETIC REACTION CENTER.

Mol	Chain	Residues	Atoms					ZeroOcc	AltConf	Trace
2	M	296	Total	C	N	O	S	0	0	0
			2361	1579	386	386	10			

- Molecule 3 is a protein called PHOTOSYNTHETIC REACTION CENTER.

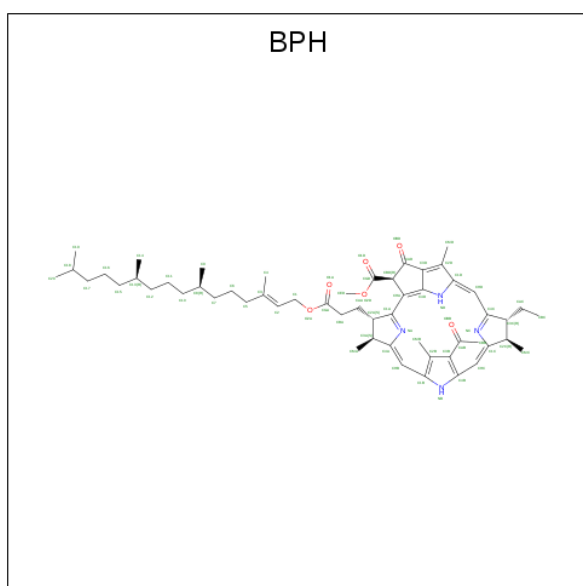
Mol	Chain	Residues	Atoms					ZeroOcc	AltConf	Trace
3	H	237	Total	C	N	O	S	0	0	0
			1806	1156	310	331	9			

- Molecule 4 is BACTERIOCHLOROPHYLL A (three-letter code: BCL) (formula: $C_{55}H_{74}MgN_4O_6$).



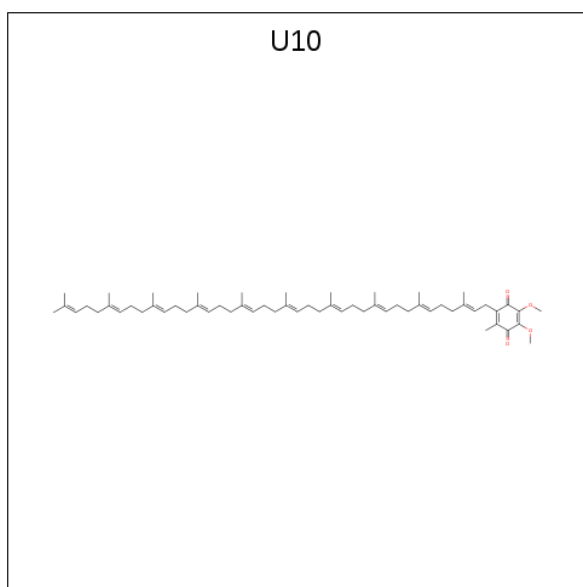
Mol	Chain	Residues	Atoms					ZeroOcc	AltConf
4	L	1	Total 51	C 40	Mg 1	N 4	O 6	0	0
4	L	1	Total 66	C 55	Mg 1	N 4	O 6	0	0
4	M	1	Total 66	C 55	Mg 1	N 4	O 6	0	0
4	M	1	Total 51	C 40	Mg 1	N 4	O 6	0	0

- Molecule 5 is BACTERIOPHEOPHYTIN A (three-letter code: BPH) (formula: $C_{55}H_{76}N_4O_6$).



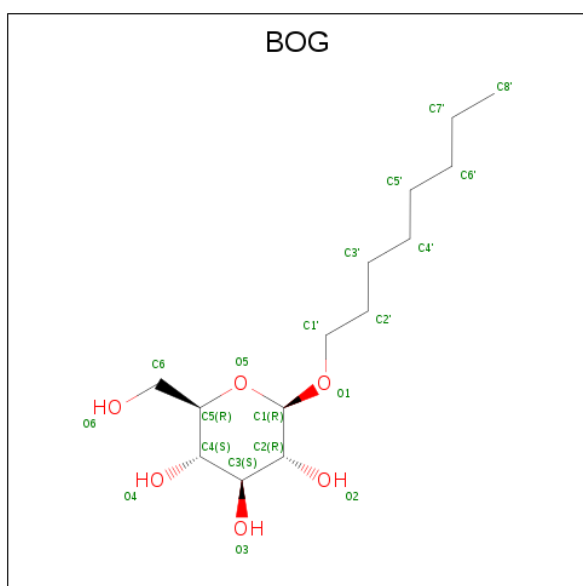
Mol	Chain	Residues	Atoms				ZeroOcc	AltConf
5	L	1	Total	C	N	O	0	0
			65	55	4	6		
5	M	1	Total	C	N	O	0	0
			65	55	4	6		

- Molecule 6 is UBIQUINONE-10 (three-letter code: U10) (formula: $C_{59}H_{90}O_4$).



Mol	Chain	Residues	Atoms			ZeroOcc	AltConf
6	L	1	Total	C	O	0	0
			41	37	4		
6	M	1	Total	C	O	0	0
			51	47	4		

- Molecule 7 is octyl beta-D-glucopyranoside (three-letter code: BOG) (formula: $C_{14}H_{28}O_6$).



Mol	Chain	Residues	Atoms			ZeroOcc	AltConf
7	M	1	Total	C	O	0	0
			20	14	6		

- Molecule 8 is FE (III) ION (three-letter code: FE) (formula: Fe).

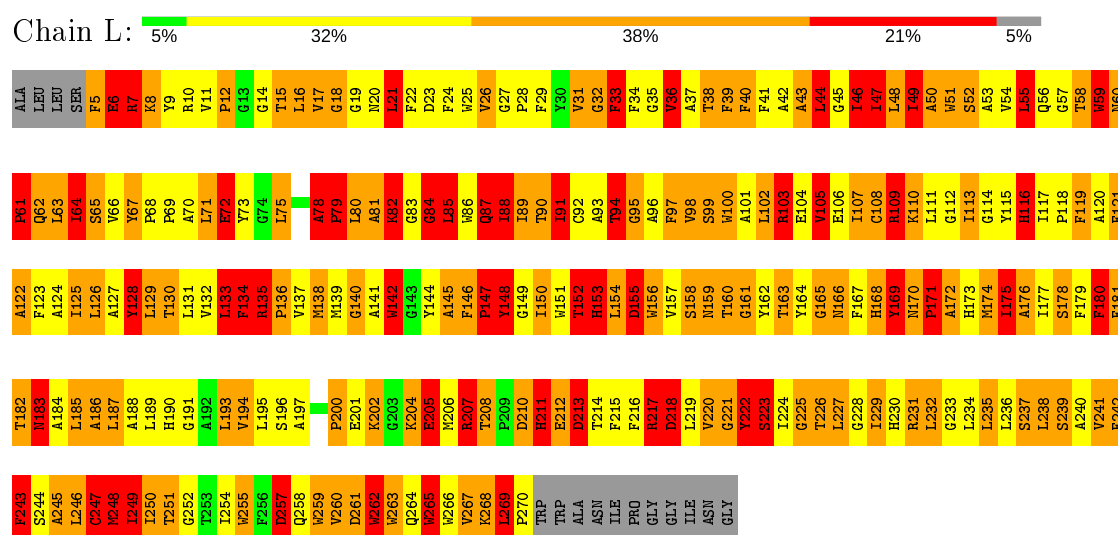
Mol	Chain	Residues	Atoms		ZeroOcc	AltConf
8	M	1	Total	Fe	0	0
			1	1		

3 Residue-property plots

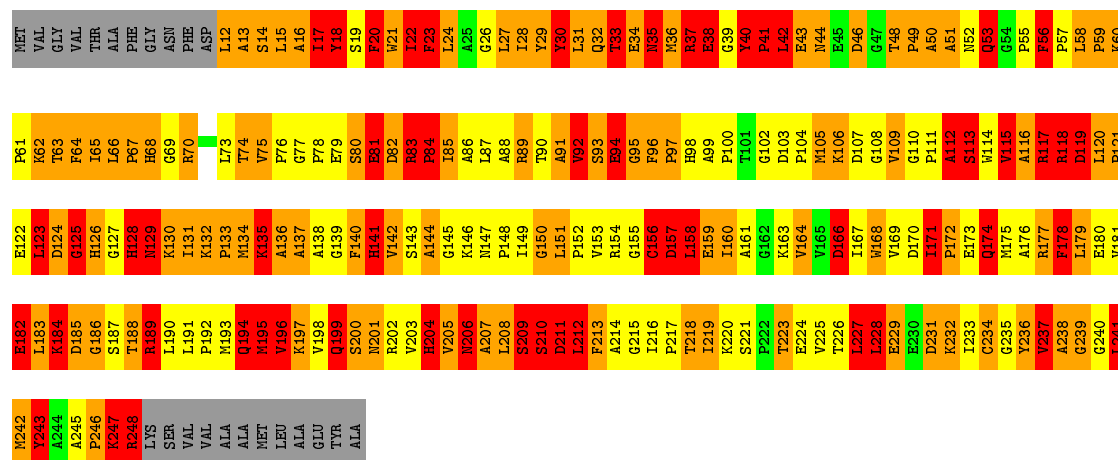
These plots are drawn for all protein, RNA, DNA and oligosaccharide chains in the entry. The first graphic for a chain summarises the proportions of the various outlier classes displayed in the second graphic. The second graphic shows the sequence view annotated by issues in geometry. Residues are color-coded according to the number of geometric quality criteria for which they contain at least one outlier: green = 0, yellow = 1, orange = 2 and red = 3 or more. Stretches of 2 or more consecutive residues without any outlier are shown as a green connector. Residues present in the sample, but not in the model, are shown in grey.

Note EDS was not executed.

• Molecule 1: PHOTOSYNTHETIC REACTION CENTER



Chain H:



4 Data and refinement statistics

Xtriage (Phenix) and EDS were not executed - this section is therefore incomplete.

Property	Value	Source
Space group	P 21 21 21	Depositor
Cell constants a, b, c, α , β , γ	138.00 Å 77.50 Å 141.80 Å 90.00° 90.00° 90.00°	Depositor
Resolution (Å)	8.00 – 2.80	Depositor
% Data completeness (in resolution range)	(Not available) (8.00-2.80)	Depositor
R_{merge}	(Not available)	Depositor
R_{sym}	(Not available)	Depositor
Refinement program	X-PLOR	Depositor
R, R_{free}	0.227 , (Not available)	Depositor
Estimated twinning fraction	No twinning to report.	Xtriage
Total number of atoms	6764	wwPDB-VP
Average B, all atoms (Å ²)	30.0	wwPDB-VP

5 Model quality

5.1 Standard geometry

Bond lengths and bond angles in the following residue types are not validated in this section: BCL, BPH, U10, FE, BOG

The Z score for a bond length (or angle) is the number of standard deviations the observed value is removed from the expected value. A bond length (or angle) with $|Z| > 5$ is considered an outlier worth inspection. RMSZ is the root-mean-square of all Z scores of the bond lengths (or angles).

Mol	Chain	Bond lengths		Bond angles	
		RMSZ	$\# Z > 5$	RMSZ	$\# Z > 5$
1	L	1.01	1/2203 (0.0%)	1.69	48/3014 (1.6%)
2	M	1.03	0/2452	1.71	52/3348 (1.6%)
3	H	1.16	4/1854 (0.2%)	1.95	48/2523 (1.9%)
All	All	1.06	5/6509 (0.1%)	1.78	148/8885 (1.7%)

Chiral center outliers are detected by calculating the chiral volume of a chiral center and verifying if the center is modelled as a planar moiety or with the opposite hand. A planarity outlier is detected by checking planarity of atoms in a peptide group, atoms in a mainchain group or atoms of a sidechain that are expected to be planar.

Mol	Chain	#Chirality outliers	#Planarity outliers
1	L	0	36
2	M	0	29
3	H	2	39
All	All	2	104

All (5) bond length outliers are listed below:

Mol	Chain	Res	Type	Atoms	Z	Observed(Å)	Ideal(Å)
3	H	53	GLN	C-N	17.61	1.64	1.33
3	H	56	PHE	C-N	-12.37	1.10	1.34
3	H	248	ARG	CD-NE	-6.33	1.35	1.46
3	H	248	ARG	NE-CZ	-5.38	1.26	1.33
1	L	94	THR	CA-CB	5.02	1.66	1.53

The worst 5 of 148 bond angle outliers are listed below:

Mol	Chain	Res	Type	Atoms	Z	Observed(°)	Ideal(°)
3	H	248	ARG	CD-NE-CZ	40.26	179.96	123.60
2	M	13	ARG	NE-CZ-NH1	14.66	127.63	120.30

Continued on next page...

Continued from previous page...

Mol	Chain	Res	Type	Atoms	Z	Observed(°)	Ideal(°)
2	M	13	ARG	NE-CZ-NH2	-11.69	114.46	120.30
3	H	177	ARG	NE-CZ-NH1	-10.41	115.10	120.30
3	H	248	ARG	NE-CZ-NH1	9.76	125.18	120.30

All (2) chirality outliers are listed below:

Mol	Chain	Res	Type	Atom
3	H	141	HIS	CA
3	H	204	HIS	CA

5 of 104 planarity outliers are listed below:

Mol	Chain	Res	Type	Group
1	L	36	VAL	Mainchain
1	L	44	LEU	Mainchain
1	L	46	ILE	Mainchain
1	L	6	GLU	Mainchain
1	L	7	ARG	Sidechain

5.2 Too-close contacts

In the following table, the Non-H and H(model) columns list the number of non-hydrogen atoms and hydrogen atoms in the chain respectively. The H(added) column lists the number of hydrogen atoms added and optimized by MolProbity. The Clashes column lists the number of clashes within the asymmetric unit, whereas Symm-Clashes lists symmetry related clashes.

Mol	Chain	Non-H	H(model)	H(added)	Clashes	Symm-Clashes
1	L	2120	0	2077	1093	0
2	M	2361	0	2279	1145	0
3	H	1806	0	1814	771	0
4	L	117	0	115	116	0
4	M	117	0	113	93	0
5	L	65	0	76	44	0
5	M	65	0	76	47	0
6	L	41	0	52	31	0
6	M	51	0	68	43	0
7	M	20	0	28	7	0
8	M	1	0	0	0	0
All	All	6764	0	6698	2900	0

The all-atom clashscore is defined as the number of clashes found per 1000 atoms (including

hydrogen atoms). The all-atom clashscore for this structure is 216.

The worst 5 of 2900 close contacts within the same asymmetric unit are listed below, sorted by their clash magnitude.

Atom-1	Atom-2	Interatomic distance (Å)	Clash overlap (Å)
2:M:73:TRP:CD1	2:M:114:LEU:HG	1.20	1.64
5:M:312:BPH:C11	5:M:312:BPH:C10	1.76	1.61
5:M:312:BPH:C6	5:M:312:BPH:C7	1.78	1.60
1:L:175:ILE:HG21	1:L:243:PHE:CD2	1.24	1.60
2:M:197:PHE:CZ	4:M:310:BCL:HBB2	1.33	1.57

There are no symmetry-related clashes.

5.3 Torsion angles [i](#)

5.3.1 Protein backbone [i](#)

In the following table, the Percentiles column shows the percent Ramachandran outliers of the chain as a percentile score with respect to all X-ray entries followed by that with respect to entries of similar resolution.

The Analysed column shows the number of residues for which the backbone conformation was analysed, and the total number of residues.

Mol	Chain	Analysed	Favoured	Allowed	Outliers	Percentiles	
1	L	264/281 (94%)	118 (45%)	65 (25%)	81 (31%)	0	0
2	M	294/307 (96%)	141 (48%)	74 (25%)	79 (27%)	0	0
3	H	235/260 (90%)	107 (46%)	65 (28%)	63 (27%)	0	0
All	All	793/848 (94%)	366 (46%)	204 (26%)	223 (28%)	0	0

5 of 223 Ramachandran outliers are listed below:

Mol	Chain	Res	Type
1	L	6	GLU
1	L	7	ARG
1	L	18	GLY
1	L	21	LEU
1	L	31	VAL

5.3.2 Protein sidechains [i](#)

In the following table, the Percentiles column shows the percent sidechain outliers of the chain as a percentile score with respect to all X-ray entries followed by that with respect to entries of similar resolution.

The Analysed column shows the number of residues for which the sidechain conformation was analysed, and the total number of residues.

Mol	Chain	Analysed	Rotameric	Outliers	Percentiles	
1	L	210/220 (96%)	124 (59%)	86 (41%)	0	0
2	M	232/240 (97%)	128 (55%)	104 (45%)	0	0
3	H	192/208 (92%)	92 (48%)	100 (52%)	0	0
All	All	634/668 (95%)	344 (54%)	290 (46%)	0	0

5 of 290 residues with a non-rotameric sidechain are listed below:

Mol	Chain	Res	Type
2	M	119	SER
2	M	227	SER
3	H	204	HIS
2	M	126	VAL
2	M	165	PRO

Some sidechains can be flipped to improve hydrogen bonding and reduce clashes. 5 of 21 such sidechains are listed below:

Mol	Chain	Res	Type
2	M	44	ASN
2	M	77	GLN
3	H	98	HIS
2	M	28	ASN
3	H	199	GLN

5.3.3 RNA [i](#)

There are no RNA molecules in this entry.

5.4 Non-standard residues in protein, DNA, RNA chains [i](#)

There are no non-standard protein/DNA/RNA residues in this entry.

5.5 Carbohydrates [i](#)

There are no monosaccharides in this entry.

5.6 Ligand geometry [i](#)

Of 10 ligands modelled in this entry, 1 is monoatomic - leaving 9 for Mogul analysis.

In the following table, the Counts columns list the number of bonds (or angles) for which Mogul statistics could be retrieved, the number of bonds (or angles) that are observed in the model and the number of bonds (or angles) that are defined in the Chemical Component Dictionary. The Link column lists molecule types, if any, to which the group is linked. The Z score for a bond length (or angle) is the number of standard deviations the observed value is removed from the expected value. A bond length (or angle) with $|Z| > 2$ is considered an outlier worth inspection. RMSZ is the root-mean-square of all Z scores of the bond lengths (or angles).

Mol	Type	Chain	Res	Link	Bond lengths			Bond angles		
					Counts	RMSZ	# Z > 2	Counts	RMSZ	# Z > 2
5	BPH	M	312	2	64,70,70	1.58	6 (9%)	76,101,101	3.43	21 (27%)
4	BCL	M	310	2	58,74,74	1.71	9 (15%)	69,115,115	4.16	19 (27%)
6	U10	M	313	-	51,51,63	0.96	1 (1%)	61,64,79	2.00	20 (32%)
4	BCL	M	311	-	43,59,74	2.03	11 (25%)	51,97,115	4.75	20 (39%)
7	BOG	M	308	-	20,20,20	0.66	0	25,25,25	1.40	3 (12%)
4	BCL	L	283	1	58,74,74	1.70	8 (13%)	69,115,115	3.99	24 (34%)
6	U10	L	285	-	41,41,63	1.01	0	49,52,79	1.87	13 (26%)
5	BPH	L	284	-	64,70,70	2.24	9 (14%)	76,101,101	3.49	22 (28%)
4	BCL	L	282	2	43,59,74	1.82	7 (16%)	51,97,115	4.50	17 (33%)

In the following table, the Chirals column lists the number of chiral outliers, the number of chiral centers analysed, the number of these observed in the model and the number defined in the Chemical Component Dictionary. Similar counts are reported in the Torsion and Rings columns. '-' means no outliers of that kind were identified.

Mol	Type	Chain	Res	Link	Chirals	Torsions	Rings
5	BPH	M	312	2	-	24/54/105/105	0/5/6/6
4	BCL	M	310	2	-	20/37/137/137	-
6	U10	M	313	-	-	18/49/73/87	0/1/1/1
4	BCL	M	311	-	-	5/19/119/137	-
7	BOG	M	308	-	1/1/5/5	8/11/31/31	0/1/1/1
4	BCL	L	283	1	-	13/37/137/137	-
6	U10	L	285	-	-	17/37/61/87	0/1/1/1

Continued on next page...

Continued from previous page...

Mol	Type	Chain	Res	Link	Chirals	Torsions	Rings
5	BPH	L	284	-	-	15/54/105/105	0/5/6/6
4	BCL	L	282	2	-	10/19/119/137	-

The worst 5 of 51 bond length outliers are listed below:

Mol	Chain	Res	Type	Atoms	Z	Observed(Å)	Ideal(Å)
5	L	284	BPH	CHB-C1B	12.22	1.62	1.38
5	L	284	BPH	CHC-C4B	8.44	1.60	1.40
5	M	312	BPH	C6-C7	6.21	1.78	1.52
4	L	282	BCL	O1D-CGD	5.71	1.35	1.21
5	M	312	BPH	C11-C10	5.60	1.76	1.52

The worst 5 of 159 bond angle outliers are listed below:

Mol	Chain	Res	Type	Atoms	Z	Observed(°)	Ideal(°)
4	M	310	BCL	C4D-C3D-CAD	-28.89	92.36	108.47
4	M	311	BCL	C4D-C3D-CAD	-28.02	92.84	108.47
4	L	282	BCL	C4D-C3D-CAD	-26.98	93.42	108.47
4	L	283	BCL	C4D-C3D-CAD	-26.61	93.63	108.47
5	M	312	BPH	C4D-C3D-CAD	-22.90	93.37	107.87

All (1) chirality outliers are listed below:

Mol	Chain	Res	Type	Atom
7	M	308	BOG	C1

5 of 130 torsion outliers are listed below:

Mol	Chain	Res	Type	Atoms
5	M	312	BPH	CBD-CGD-O2D-CED
5	M	312	BPH	C2C-C1C-CHC-C4B
5	M	312	BPH	C4B-C3B-CAB-CBB
5	M	312	BPH	C4B-C3B-CAB-OB
5	M	312	BPH	C3A-C2A-CAA-CBA

There are no ring outliers.

9 monomers are involved in 327 short contacts:

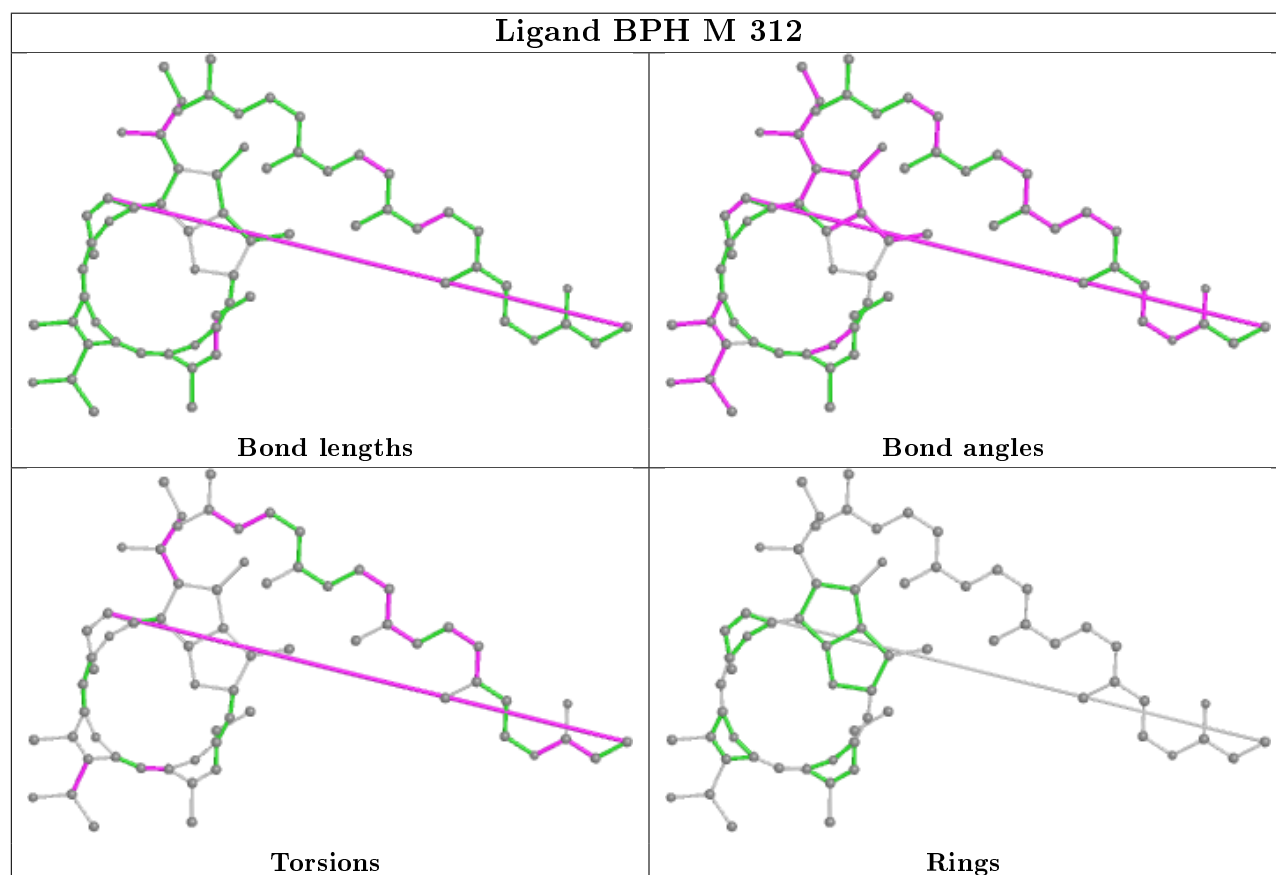
Mol	Chain	Res	Type	Clashes	Symm-Clashes
5	M	312	BPH	47	0
4	M	310	BCL	68	0

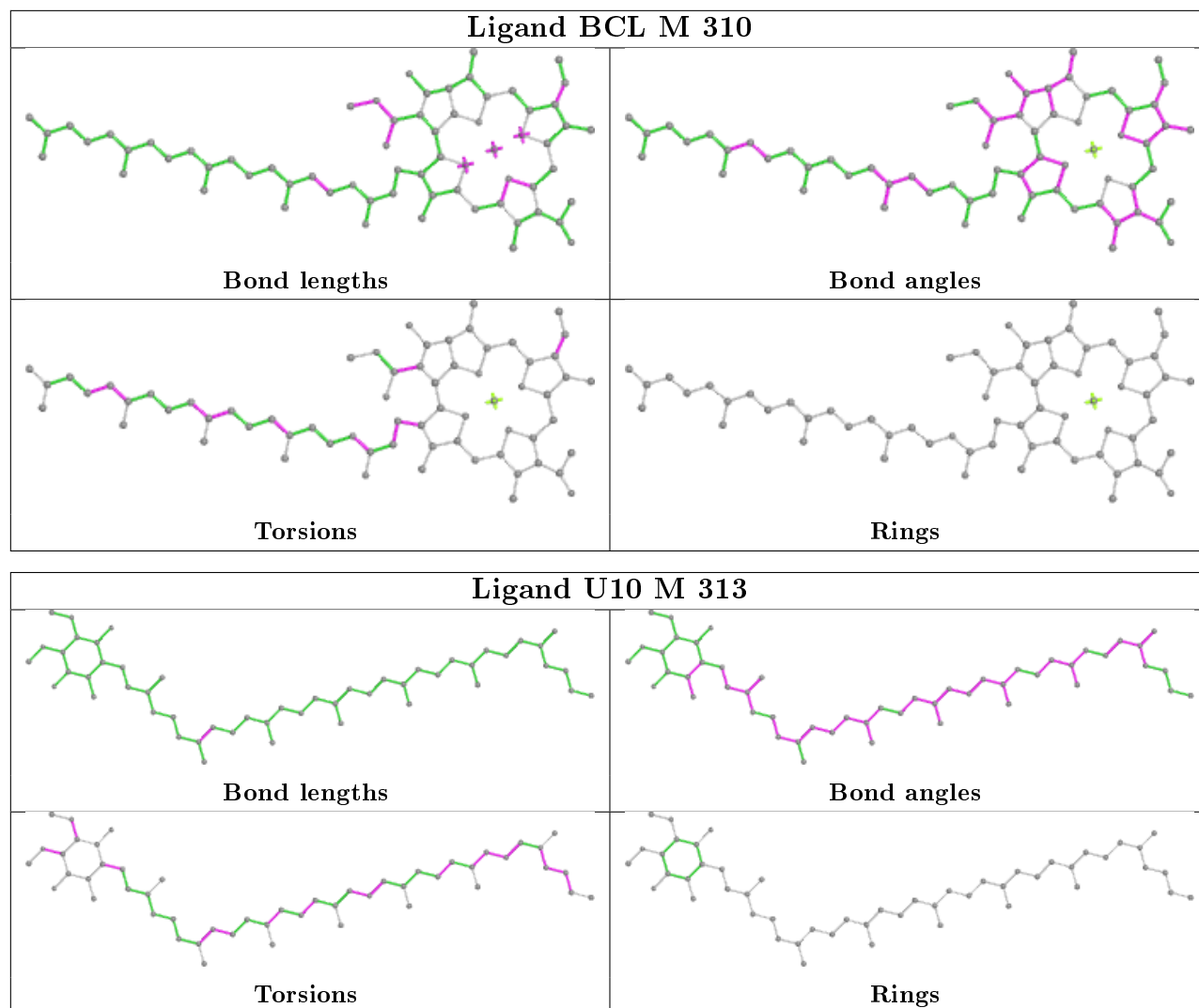
Continued on next page...

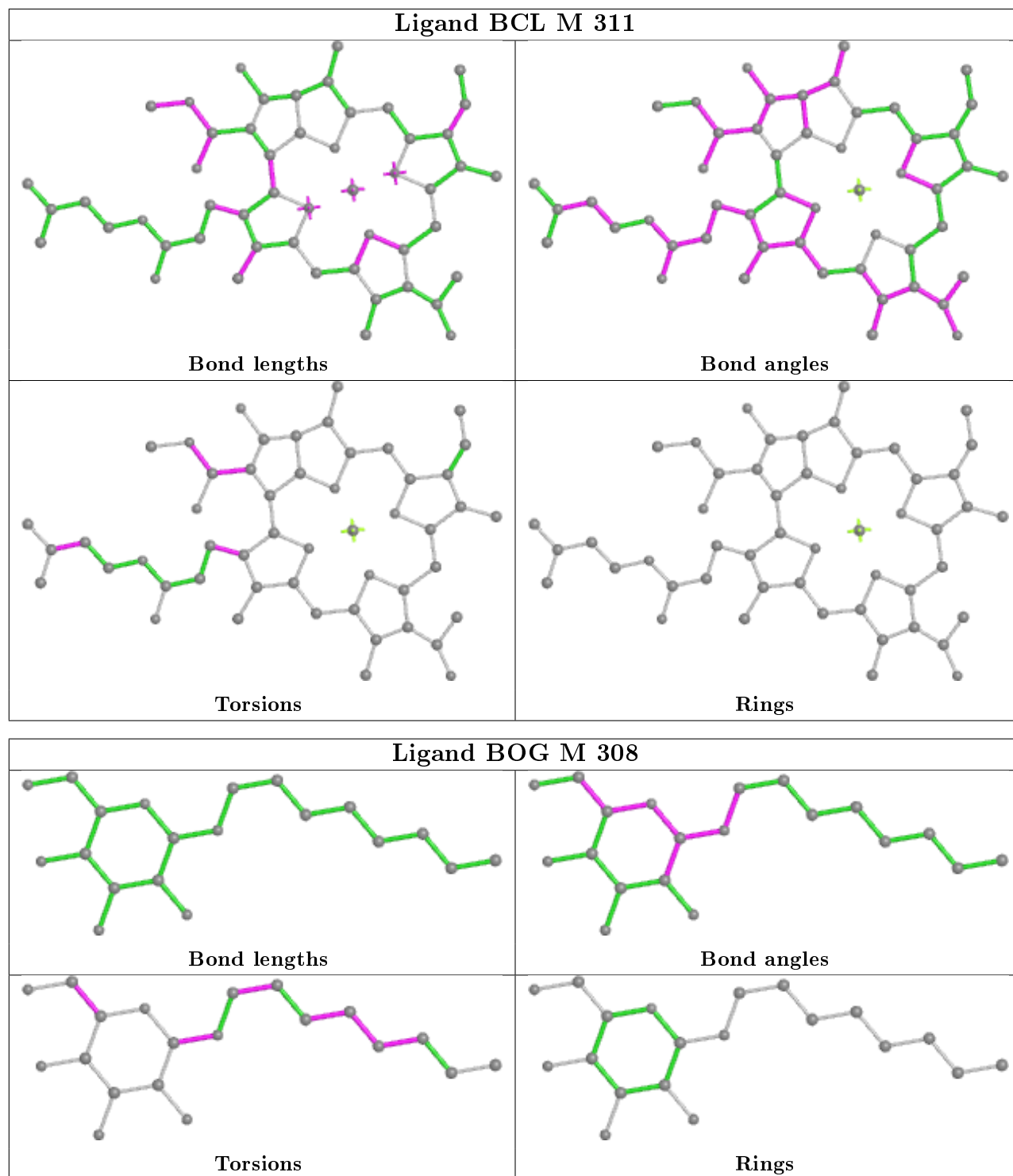
Continued from previous page...

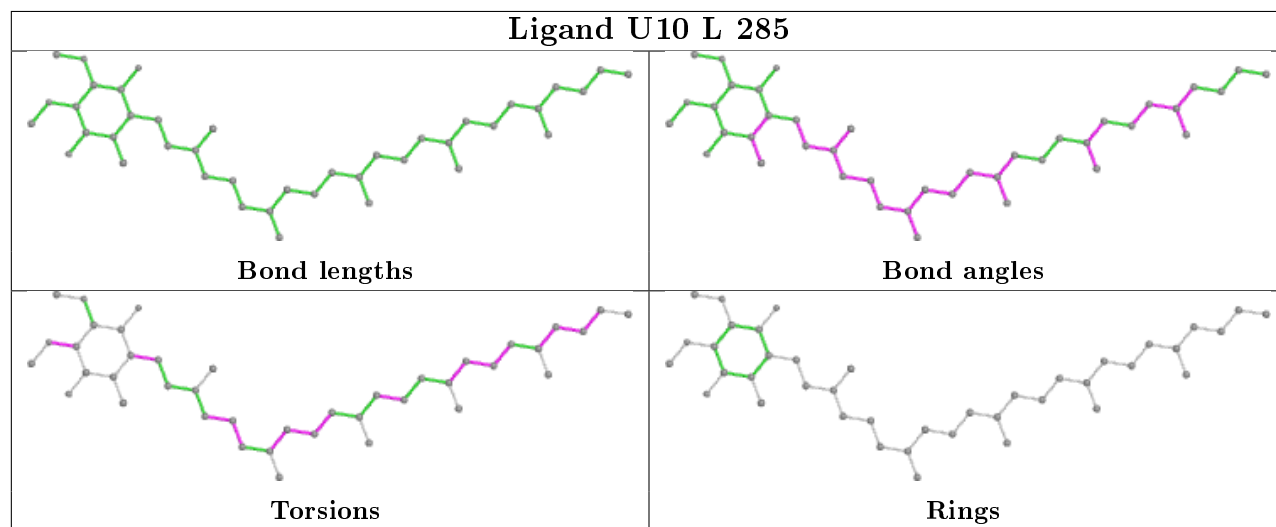
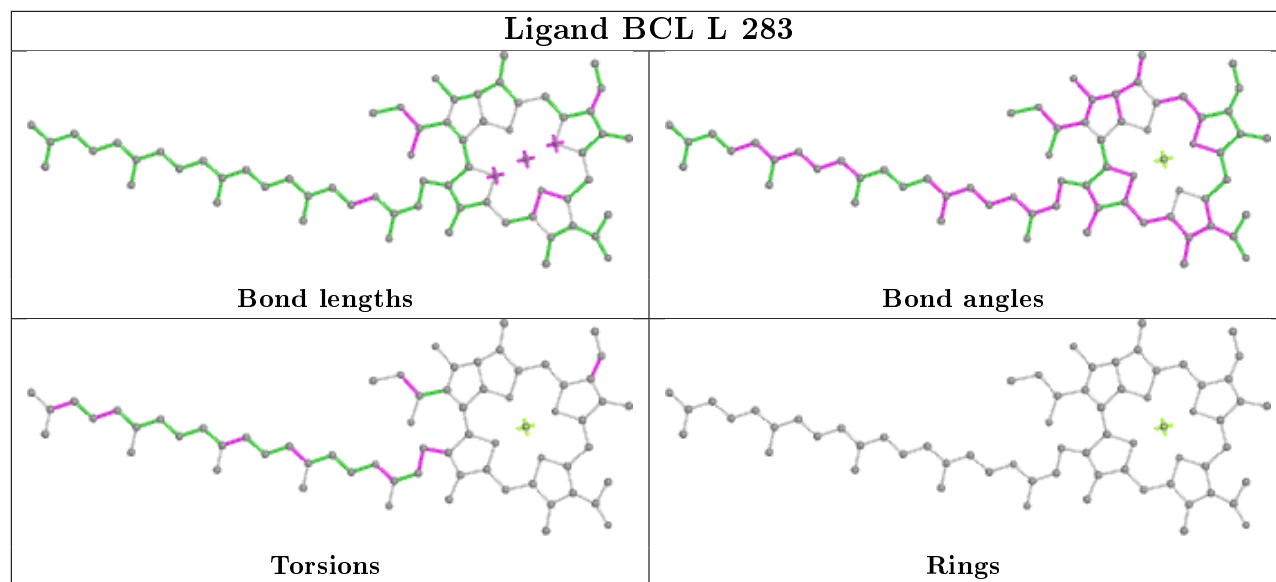
Mol	Chain	Res	Type	Clashes	Symm-Clashes
6	M	313	U10	43	0
4	M	311	BCL	25	0
7	M	308	BOG	7	0
4	L	283	BCL	100	0
6	L	285	U10	31	0
5	L	284	BPH	44	0
4	L	282	BCL	19	0

The following is a two-dimensional graphical depiction of Mogul quality analysis of bond lengths, bond angles, torsion angles, and ring geometry for all instances of the Ligand of Interest. In addition, ligands with molecular weight > 250 and outliers as shown on the validation Tables will also be included. For torsion angles, if less than 5% of the Mogul distribution of torsion angles is within 10 degrees of the torsion angle in question, then that torsion angle is considered an outlier. Any bond that is central to one or more torsion angles identified as an outlier by Mogul will be highlighted in the graph. For rings, the root-mean-square deviation (RMSD) between the ring in question and similar rings identified by Mogul is calculated over all ring torsion angles. If the average RMSD is greater than 60 degrees and the minimal RMSD between the ring in question and any Mogul-identified rings is also greater than 60 degrees, then that ring is considered an outlier. The outliers are highlighted in purple. The color gray indicates Mogul did not find sufficient equivalents in the CSD to analyse the geometry.

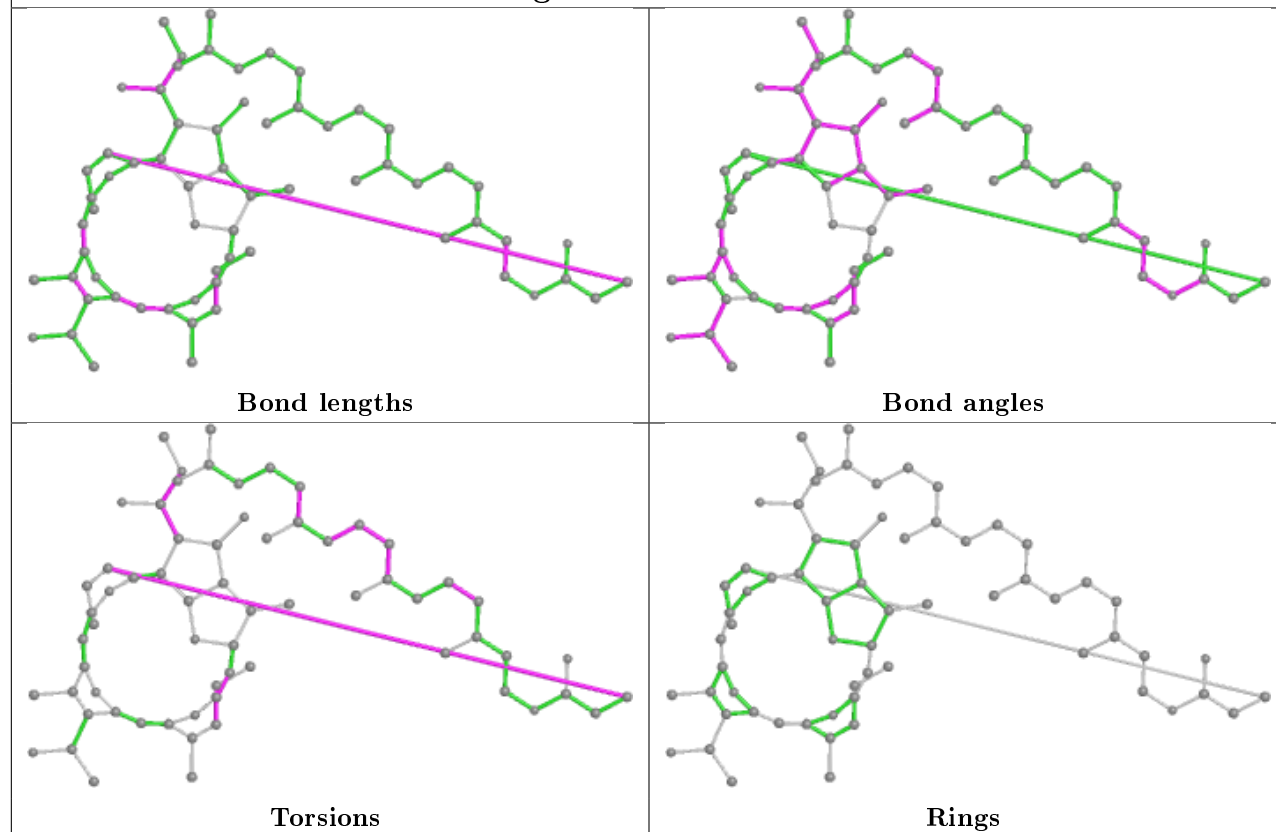




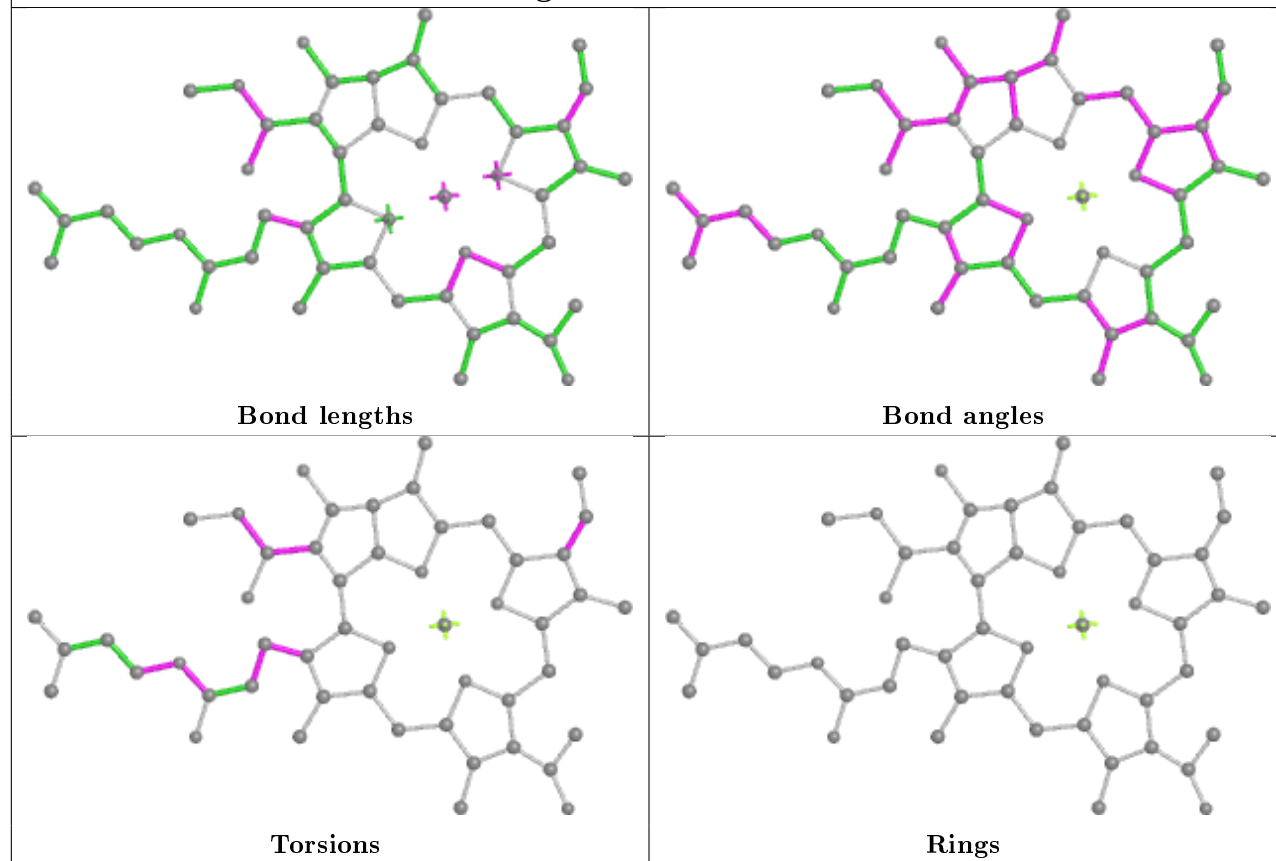




Ligand BPH L 284



Ligand BCL L 282



5.7 Other polymers [i](#)

There are no such residues in this entry.

5.8 Polymer linkage issues [i](#)

The following chains have linkage breaks:

Mol	Chain	Number of breaks
3	H	2

All chain breaks are listed below:

Model	Chain	Residue-1	Atom-1	Residue-2	Atom-2	Distance (Å)
1	H	53:GLN	C	54:GLY	N	1.64
1	H	56:PHE	C	57:PRO	N	1.10

6 Fit of model and data ⓘ

6.1 Protein, DNA and RNA chains ⓘ

EDS was not executed - this section is therefore empty.

6.2 Non-standard residues in protein, DNA, RNA chains ⓘ

EDS was not executed - this section is therefore empty.

6.3 Carbohydrates ⓘ

EDS was not executed - this section is therefore empty.

6.4 Ligands ⓘ

EDS was not executed - this section is therefore empty.

6.5 Other polymers ⓘ

EDS was not executed - this section is therefore empty.