



Full wwPDB X-ray Structure Validation Report ⓘ

May 16, 2020 – 06:13 pm BST

PDB ID : 2RHC
Title : Actinorhodin ketoreductase, actKR, with NADP⁺ and Inhibitor Emodin
Authors : Korman, T.P.; Tsai, S.-C.
Deposited on : 2007-10-08
Resolution : 2.10 Å(reported)

This is a Full wwPDB X-ray Structure Validation Report for a publicly released PDB entry.

We welcome your comments at validation@mail.wwpdb.org

A user guide is available at

<https://www.wwpdb.org/validation/2017/XrayValidationReportHelp>

with specific help available everywhere you see the ⓘ symbol.

The following versions of software and data (see [references ⓘ](#)) were used in the production of this report:

MolProbity : 4.02b-467
Mogul : 1.8.5 (274361), CSD as541be (2020)
Xtriage (Phenix) : 1.13
EDS : 2.11
buster-report : 1.1.7 (2018)
Percentile statistics : 20191225.v01 (using entries in the PDB archive December 25th 2019)
Refmac : 5.8.0158
CCP4 : 7.0.044 (Gargrove)
Ideal geometry (proteins) : Engh & Huber (2001)
Ideal geometry (DNA, RNA) : Parkinson et al. (1996)
Validation Pipeline (wwPDB-VP) : 2.11

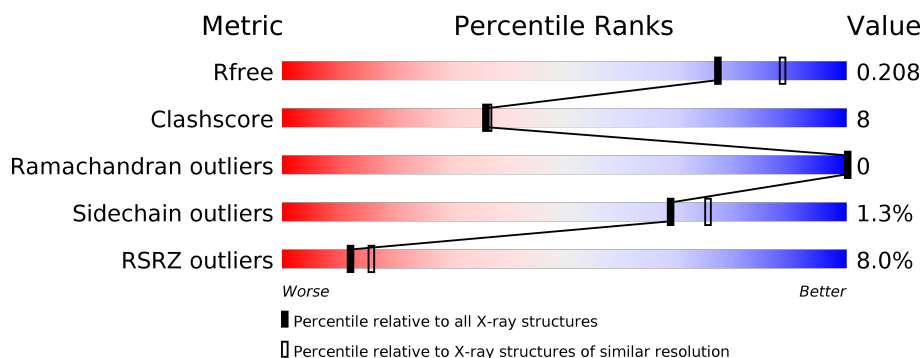
1 Overall quality at a glance

The following experimental techniques were used to determine the structure:

X-RAY DIFFRACTION

The reported resolution of this entry is 2.10 Å.

Percentile scores (ranging between 0-100) for global validation metrics of the entry are shown in the following graphic. The table shows the number of entries on which the scores are based.



Metric	Whole archive (#Entries)	Similar resolution (#Entries, resolution range(Å))
R_{free}	130704	5197 (2.10-2.10)
Clashscore	141614	5710 (2.10-2.10)
Ramachandran outliers	138981	5647 (2.10-2.10)
Sidechain outliers	138945	5648 (2.10-2.10)
RSRZ outliers	127900	5083 (2.10-2.10)

The table below summarises the geometric issues observed across the polymeric chains and their fit to the electron density. The red, orange, yellow and green segments on the lower bar indicate the fraction of residues that contain outliers for ≥ 3 , 2, 1 and 0 types of geometric quality criteria respectively. A grey segment represents the fraction of residues that are not modelled. The numeric value for each fraction is indicated below the corresponding segment, with a dot representing fractions $\leq 5\%$. The upper red bar (where present) indicates the fraction of residues that have poor fit to the electron density. The numeric value is given above the bar.

Mol	Chain	Length	Quality of chain
1	A	277	<div> <div>7%</div> <div> <div></div> <div>78%</div> <div>14%</div> <div>7%</div> </div> </div>
1	B	277	<div> <div>8%</div> <div> <div></div> <div>81%</div> <div>16%</div> <div></div> </div> </div>

2 Entry composition

There are 4 unique types of molecules in this entry. The entry contains 4293 atoms, of which 0 are hydrogens and 0 are deuteriums.

In the tables below, the ZeroOcc column contains the number of atoms modelled with zero occupancy, the AltConf column contains the number of residues with at least one atom in alternate conformation and the Trace column contains the number of residues modelled with at most 2 atoms.

- Molecule 1 is a protein called Actinorhodin Polyketide Ketoreductase.

Mol	Chain	Residues	Atoms					ZeroOcc	AltConf	Trace
1	B	268	Total	C	N	O	S	0	0	0
			1966	1226	354	378	8			
1	A	257	Total	C	N	O	S	0	0	0
			1884	1176	337	364	7			

There are 32 discrepancies between the modelled and reference sequences:

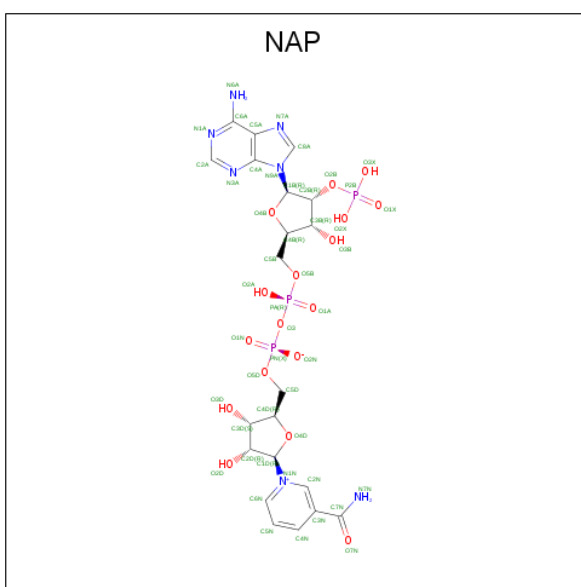
Chain	Residue	Modelled	Actual	Comment	Reference
B	-15	HIS	-	EXPRESSION TAG	UNP P16544
B	-14	HIS	-	EXPRESSION TAG	UNP P16544
B	-13	HIS	-	EXPRESSION TAG	UNP P16544
B	-12	HIS	-	EXPRESSION TAG	UNP P16544
B	-11	HIS	-	EXPRESSION TAG	UNP P16544
B	-10	HIS	-	EXPRESSION TAG	UNP P16544
B	-9	SER	-	EXPRESSION TAG	UNP P16544
B	-8	SER	-	EXPRESSION TAG	UNP P16544
B	-7	GLY	-	EXPRESSION TAG	UNP P16544
B	-6	LEU	-	EXPRESSION TAG	UNP P16544
B	-5	VAL	-	EXPRESSION TAG	UNP P16544
B	-4	PRO	-	EXPRESSION TAG	UNP P16544
B	-3	ARG	-	EXPRESSION TAG	UNP P16544
B	-2	GLY	-	EXPRESSION TAG	UNP P16544
B	-1	SER	-	EXPRESSION TAG	UNP P16544
B	0	HIS	-	EXPRESSION TAG	UNP P16544
A	-15	HIS	-	EXPRESSION TAG	UNP P16544
A	-14	HIS	-	EXPRESSION TAG	UNP P16544
A	-13	HIS	-	EXPRESSION TAG	UNP P16544
A	-12	HIS	-	EXPRESSION TAG	UNP P16544
A	-11	HIS	-	EXPRESSION TAG	UNP P16544
A	-10	HIS	-	EXPRESSION TAG	UNP P16544
A	-9	SER	-	EXPRESSION TAG	UNP P16544
A	-8	SER	-	EXPRESSION TAG	UNP P16544
A	-7	GLY	-	EXPRESSION TAG	UNP P16544

Continued on next page...

Continued from previous page...

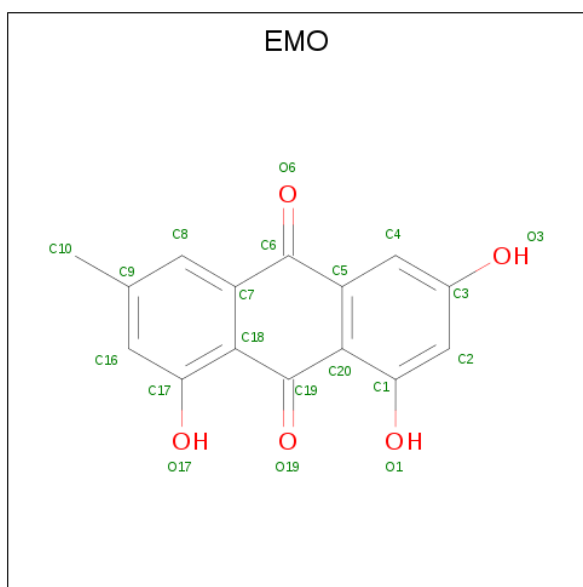
Chain	Residue	Modelled	Actual	Comment	Reference
A	-6	LEU	-	EXPRESSION TAG	UNP P16544
A	-5	VAL	-	EXPRESSION TAG	UNP P16544
A	-4	PRO	-	EXPRESSION TAG	UNP P16544
A	-3	ARG	-	EXPRESSION TAG	UNP P16544
A	-2	GLY	-	EXPRESSION TAG	UNP P16544
A	-1	SER	-	EXPRESSION TAG	UNP P16544
A	0	HIS	-	EXPRESSION TAG	UNP P16544

- Molecule 2 is NADP NICOTINAMIDE-ADENINE-DINUCLEOTIDE PHOSPHATE (three-letter code: NAP) (formula: $C_{21}H_{28}N_7O_{17}P_3$).



Mol	Chain	Residues	Atoms					ZeroOcc	AltConf
2	B	1	Total 48	C 21	N 7	O 17	P 3	0	0
2	A	1	Total 48	C 21	N 7	O 17	P 3	0	0

- Molecule 3 is 3-METHYL-1,6,8-TRIHYDROXYANTHRAQUINONE (three-letter code: EMO) (formula: $\text{C}_{15}\text{H}_{10}\text{O}_5$).



Mol	Chain	Residues	Atoms			ZeroOcc	AltConf
3	A	1	Total	C	O	0	0
			20	15	5		

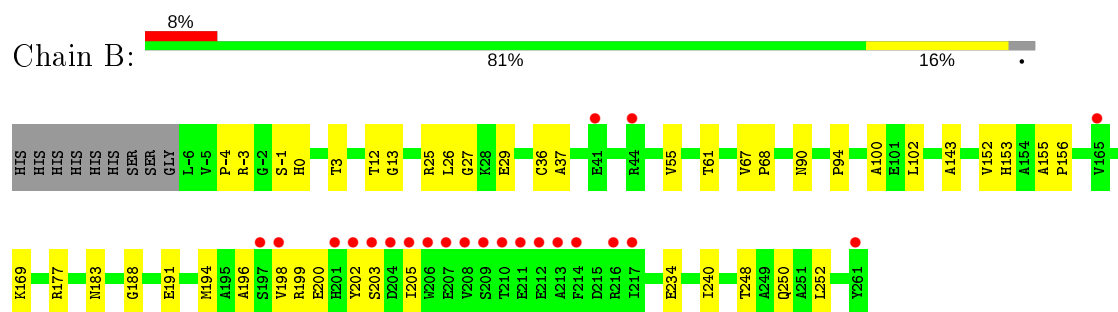
- Molecule 4 is water.

Mol	Chain	Residues	Atoms		ZeroOcc	AltConf
4	B	171	Total	O	0	0
			171	171		
4	A	156	Total	O	0	0
			156	156		

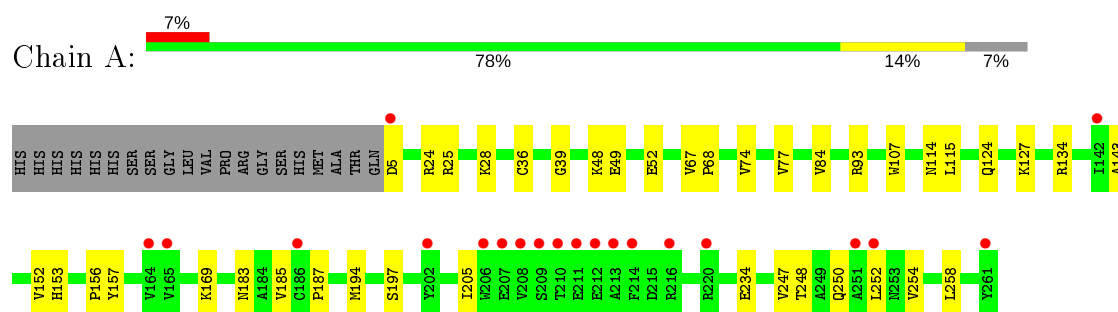
3 Residue-property plots [i](#)

These plots are drawn for all protein, RNA and DNA chains in the entry. The first graphic for a chain summarises the proportions of the various outlier classes displayed in the second graphic. The second graphic shows the sequence view annotated by issues in geometry and electron density. Residues are color-coded according to the number of geometric quality criteria for which they contain at least one outlier: green = 0, yellow = 1, orange = 2 and red = 3 or more. A red dot above a residue indicates a poor fit to the electron density ($\text{RSRZ} > 2$). Stretches of 2 or more consecutive residues without any outlier are shown as a green connector. Residues present in the sample, but not in the model, are shown in grey.

- Molecule 1: Actinorhodin Polyketide Ketoreductase



- Molecule 1: Actinorhodin Polyketide Ketoreductase



4 Data and refinement statistics

Property	Value	Source
Space group	P 32 2 1	Depositor
Cell constants a, b, c, α , β , γ	103.88Å 103.88Å 123.28Å 90.00° 90.00° 120.00°	Depositor
Resolution (Å)	42.25 – 2.10 42.25 – 2.10	Depositor EDS
% Data completeness (in resolution range)	95.7 (42.25-2.10) 95.7 (42.25-2.10)	Depositor EDS
R_{merge}	0.08	Depositor
R_{sym}	(Not available)	Depositor
$\langle I/\sigma(I) \rangle$ ¹	5.16 (at 2.10Å)	Xtriage
Refinement program	CNS	Depositor
R, R_{free}	0.186 , 0.214 0.180 , 0.208	Depositor DCC
R_{free} test set	4370 reflections (9.63%)	wwPDB-VP
Wilson B-factor (Å ²)	29.5	Xtriage
Anisotropy	0.328	Xtriage
Bulk solvent k_{sol} (e/Å ³), B_{sol} (Å ²)	0.38 , 48.9	EDS
L-test for twinning ²	$\langle L \rangle = 0.49$, $\langle L^2 \rangle = 0.32$	Xtriage
Estimated twinning fraction	0.027 for -h,-k,l	Xtriage
F_o, F_c correlation	0.95	EDS
Total number of atoms	4293	wwPDB-VP
Average B, all atoms (Å ²)	36.0	wwPDB-VP

Xtriage's analysis on translational NCS is as follows: *The largest off-origin peak in the Patterson function is 3.90% of the height of the origin peak. No significant pseudotranslation is detected.*

¹Intensities estimated from amplitudes.

²Theoretical values of $\langle |L| \rangle$, $\langle L^2 \rangle$ for acentric reflections are 0.5, 0.333 respectively for untwinned datasets, and 0.375, 0.2 for perfectly twinned datasets.

5 Model quality [i](#)

5.1 Standard geometry [i](#)

Bond lengths and bond angles in the following residue types are not validated in this section: EMO, NAP

The Z score for a bond length (or angle) is the number of standard deviations the observed value is removed from the expected value. A bond length (or angle) with $|Z| > 5$ is considered an outlier worth inspection. RMSZ is the root-mean-square of all Z scores of the bond lengths (or angles).

Mol	Chain	Bond lengths		Bond angles	
		RMSZ	$\# Z > 5$	RMSZ	$\# Z > 5$
1	A	0.30	0/1910	0.59	1/2594 (0.0%)
1	B	0.30	0/1994	0.60	0/2708
All	All	0.30	0/3904	0.59	1/5302 (0.0%)

There are no bond length outliers.

All (1) bond angle outliers are listed below:

Mol	Chain	Res	Type	Atoms	Z	Observed(°)	Ideal(°)
1	A	254	VAL	N-CA-C	-5.14	97.12	111.00

There are no chirality outliers.

There are no planarity outliers.

5.2 Too-close contacts [i](#)

In the following table, the Non-H and H(model) columns list the number of non-hydrogen atoms and hydrogen atoms in the chain respectively. The H(added) column lists the number of hydrogen atoms added and optimized by MolProbity. The Clashes column lists the number of clashes within the asymmetric unit, whereas Symm-Clashes lists symmetry related clashes.

Mol	Chain	Non-H	H(model)	H(added)	Clashes	Symm-Clashes
1	A	1884	0	1900	28	0
1	B	1966	0	1987	36	0
2	A	48	0	25	1	0
2	B	48	0	25	3	0
3	A	20	0	9	1	0
4	A	156	0	0	7	2
4	B	171	0	0	6	2
All	All	4293	0	3946	63	2

The all-atom clashscore is defined as the number of clashes found per 1000 atoms (including hydrogen atoms). The all-atom clashscore for this structure is 8.

All (63) close contacts within the same asymmetric unit are listed below, sorted by their clash magnitude.

Atom-1	Atom-2	Interatomic distance (Å)	Clash overlap (Å)
1:A:93:ARG:H	1:A:114:ASN:HD21	1.24	0.82
1:B:3:THR:HB	4:B:313:HOH:O	1.84	0.77
1:B:202:TYR:HA	1:B:205:ILE:HG22	1.71	0.73
1:B:169:LYS:HD3	4:A:420:HOH:O	1.90	0.70
4:B:347:HOH:O	1:A:169:LYS:HD3	1.92	0.67
1:A:258:LEU:HD12	4:A:532:HOH:O	1.94	0.67
1:B:234:GLU:HB3	4:B:309:HOH:O	1.96	0.66
1:A:234:GLU:HB3	4:A:404:HOH:O	1.96	0.65
1:B:202:TYR:HA	1:B:205:ILE:CG2	2.30	0.62
1:B:196:ALA:HA	1:B:199:ARG:HH11	1.65	0.61
1:A:252:LEU:N	1:A:252:LEU:HD12	2.17	0.59
1:A:48:LYS:O	1:A:52:GLU:HG3	2.03	0.59
1:B:200:GLU:HA	1:B:203:SER:HB3	1.85	0.58
1:B:152:VAL:HG12	1:B:153:HIS:ND1	2.19	0.57
1:A:252:LEU:HA	4:A:557:HOH:O	2.06	0.55
1:B:196:ALA:HA	1:B:199:ARG:NH1	2.21	0.55
1:B:169:LYS:HB3	4:A:420:HOH:O	2.08	0.54
1:B:252:LEU:N	1:B:252:LEU:HD12	2.23	0.53
1:B:183:ASN:HD22	1:B:250:GLN:H	1.56	0.53
1:B:194:MET:O	1:B:198:VAL:HG23	2.11	0.51
1:A:183:ASN:HD22	1:A:250:GLN:H	1.59	0.50
1:A:157:TYR:CE2	3:A:401:EMO:H8	2.47	0.50
1:B:37:ALA:O	1:B:61:THR:HA	2.12	0.50
1:B:67:VAL:N	1:B:68:PRO:HD2	2.28	0.48
1:B:25:ARG:NH1	1:B:29:GLU:OE2	2.47	0.48
1:A:67:VAL:N	1:A:68:PRO:HD2	2.28	0.48
1:A:134:ARG:HH11	1:A:134:ARG:HG2	1.79	0.47
1:A:152:VAL:HG12	1:A:153:HIS:CD2	2.49	0.47
1:B:143:ALA:O	2:B:301:NAP:H6N	2.15	0.47
1:B:-1:SER:OG	1:B:0:HIS:HD2	1.98	0.47
1:B:94:PRO:HG3	1:B:194:MET:CE	2.44	0.47
1:B:26:LEU:HD22	1:B:240:ILE:HD13	1.97	0.47
1:B:202:TYR:CA	1:B:205:ILE:HG22	2.41	0.46
1:A:247:VAL:HA	4:A:493:HOH:O	2.15	0.46
1:A:24:ARG:HH21	1:A:49:GLU:CD	2.19	0.46
1:A:74:VAL:HA	1:A:77:VAL:HG12	1.97	0.46
1:B:-4:PRO:O	1:B:0:HIS:HB2	2.16	0.46

Continued on next page...

Continued from previous page...

Atom-1	Atom-2	Interatomic distance (Å)	Clash overlap (Å)
1:A:93:ARG:N	1:A:114:ASN:HD21	2.02	0.45
1:A:194:MET:O	1:A:197:SER:HB3	2.17	0.44
1:A:25:ARG:O	1:A:28:LYS:HB3	2.17	0.44
1:B:188:GLY:O	2:B:301:NAP:H4N	2.17	0.44
1:B:152:VAL:HG23	4:B:445:HOH:O	2.16	0.44
1:B:177:ARG:HD3	1:B:177:ARG:HA	1.88	0.44
1:B:183:ASN:HD21	1:B:248:THR:HA	1.83	0.44
1:A:107:TRP:CE3	1:A:156:PRO:HB3	2.53	0.44
1:A:93:ARG:H	1:A:114:ASN:ND2	2.05	0.44
1:B:-3:ARG:HD3	4:B:336:HOH:O	2.17	0.44
1:A:84:VAL:O	1:A:134:ARG:NH2	2.52	0.43
1:B:155:ALA:N	1:B:156:PRO:HD2	2.33	0.43
1:B:191:GLU:OE1	1:B:199:ARG:NH2	2.52	0.43
1:A:74:VAL:HG21	1:A:124:GLN:HB3	2.00	0.42
1:B:12:THR:O	1:B:90:ASN:HB3	2.19	0.42
1:A:185:VAL:O	1:A:187:PRO:HD3	2.19	0.42
1:B:13:GLY:HA2	2:B:301:NAP:H1B	2.02	0.42
1:B:252:LEU:HD12	1:B:252:LEU:H	1.84	0.42
1:A:205:ILE:HG22	1:A:205:ILE:O	2.19	0.42
1:B:183:ASN:ND2	1:B:250:GLN:H	2.18	0.42
1:B:27:GLY:HA3	1:B:55:VAL:HG13	2.02	0.41
1:A:183:ASN:HD21	1:A:248:THR:HA	1.86	0.40
1:B:199:ARG:HD2	4:B:378:HOH:O	2.21	0.40
1:A:143:ALA:O	2:A:301:NAP:H6N	2.20	0.40
1:A:39:GLY:HA2	4:A:412:HOH:O	2.22	0.40
1:B:100:ALA:HB1	1:A:127:LYS:HD3	2.03	0.40

All (2) symmetry-related close contacts are listed below. The label for Atom-2 includes the symmetry operator and encoded unit-cell translations to be applied.

Atom-1	Atom-2	Interatomic distance (Å)	Clash overlap (Å)
4:B:309:HOH:O	4:A:403:HOH:O[5_554]	2.05	0.15
4:B:323:HOH:O	4:A:493:HOH:O[5_554]	2.13	0.07

5.3 Torsion angles

5.3.1 Protein backbone

In the following table, the Percentiles column shows the percent Ramachandran outliers of the chain as a percentile score with respect to all X-ray entries followed by that with respect to entries

of similar resolution.

The Analysed column shows the number of residues for which the backbone conformation was analysed, and the total number of residues.

Mol	Chain	Analysed	Favoured	Allowed	Outliers	Percentiles	
1	A	255/277 (92%)	245 (96%)	10 (4%)	0	100	100
1	B	266/277 (96%)	253 (95%)	13 (5%)	0	100	100
All	All	521/554 (94%)	498 (96%)	23 (4%)	0	100	100

There are no Ramachandran outliers to report.

5.3.2 Protein sidechains ⓘ

In the following table, the Percentiles column shows the percent sidechain outliers of the chain as a percentile score with respect to all X-ray entries followed by that with respect to entries of similar resolution.

The Analysed column shows the number of residues for which the sidechain conformation was analysed, and the total number of residues.

Mol	Chain	Analysed	Rotameric	Outliers	Percentiles	
1	A	192/209 (92%)	189 (98%)	3 (2%)	62	69
1	B	201/209 (96%)	199 (99%)	2 (1%)	76	82
All	All	393/418 (94%)	388 (99%)	5 (1%)	69	75

All (5) residues with a non-rotameric sidechain are listed below:

Mol	Chain	Res	Type
1	B	36	CYS
1	B	102	LEU
1	A	5	ASP
1	A	36	CYS
1	A	115	LEU

Some sidechains can be flipped to improve hydrogen bonding and reduce clashes. All (12) such sidechains are listed below:

Mol	Chain	Res	Type
1	B	0	HIS
1	B	89	ASN
1	B	162	HIS
1	B	183	ASN

Continued on next page...

Continued from previous page...

Mol	Chain	Res	Type
1	B	228	GLN
1	A	89	ASN
1	A	114	ASN
1	A	153	HIS
1	A	162	HIS
1	A	183	ASN
1	A	228	GLN
1	A	260	ASN

5.3.3 RNA [i](#)

There are no RNA molecules in this entry.

5.4 Non-standard residues in protein, DNA, RNA chains [i](#)

There are no non-standard protein/DNA/RNA residues in this entry.

5.5 Carbohydrates [i](#)

There are no carbohydrates in this entry.

5.6 Ligand geometry [i](#)

3 ligands are modelled in this entry.

In the following table, the Counts columns list the number of bonds (or angles) for which Mogul statistics could be retrieved, the number of bonds (or angles) that are observed in the model and the number of bonds (or angles) that are defined in the Chemical Component Dictionary. The Link column lists molecule types, if any, to which the group is linked. The Z score for a bond length (or angle) is the number of standard deviations the observed value is removed from the expected value. A bond length (or angle) with $|Z| > 2$ is considered an outlier worth inspection. RMSZ is the root-mean-square of all Z scores of the bond lengths (or angles).

Mol	Type	Chain	Res	Link	Bond lengths			Bond angles		
					Counts	RMSZ	$\# Z > 2$	Counts	RMSZ	$\# Z > 2$
2	NAP	A	301	-	45,52,52	1.29	6 (13%)	56,80,80	1.14	4 (7%)
3	EMO	A	401	-	22,22,22	2.62	16 (72%)	34,34,34	1.36	7 (20%)
2	NAP	B	301	-	45,52,52	1.29	6 (13%)	56,80,80	1.18	4 (7%)

In the following table, the Chirals column lists the number of chiral outliers, the number of chiral

centers analysed, the number of these observed in the model and the number defined in the Chemical Component Dictionary. Similar counts are reported in the Torsion and Rings columns. '-' means no outliers of that kind were identified.

Mol	Type	Chain	Res	Link	Chirals	Torsions	Rings
2	NAP	A	301	-	-	5/31/67/67	0/5/5/5
3	EMO	A	401	-	-	-	0/3/3/3
2	NAP	B	301	-	-	5/31/67/67	0/5/5/5

All (28) bond length outliers are listed below:

Mol	Chain	Res	Type	Atoms	Z	Observed(Å)	Ideal(Å)
3	A	401	EMO	O3-C3	6.17	1.51	1.37
2	A	301	NAP	C2N-N1N	4.82	1.40	1.35
2	B	301	NAP	C2N-N1N	4.76	1.40	1.35
3	A	401	EMO	C10-C9	-4.06	1.36	1.51
2	B	301	NAP	P2B-O1X	3.40	1.61	1.50
2	A	301	NAP	P2B-O1X	3.35	1.61	1.50
3	A	401	EMO	C16-C17	3.03	1.43	1.38
3	A	401	EMO	C2-C1	2.93	1.43	1.38
3	A	401	EMO	C5-C20	2.74	1.45	1.41
3	A	401	EMO	C7-C18	2.66	1.45	1.41
3	A	401	EMO	C4-C3	2.63	1.43	1.39
3	A	401	EMO	C7-C6	2.62	1.53	1.48
3	A	401	EMO	C5-C6	2.62	1.53	1.48
3	A	401	EMO	C2-C3	2.35	1.42	1.39
2	B	301	NAP	O4D-C1D	2.32	1.44	1.41
2	A	301	NAP	O4B-C1B	2.29	1.44	1.41
3	A	401	EMO	C8-C9	2.28	1.42	1.39
3	A	401	EMO	C4-C5	2.28	1.43	1.39
2	B	301	NAP	O4B-C1B	2.26	1.44	1.41
3	A	401	EMO	C20-C1	2.24	1.45	1.41
3	A	401	EMO	C16-C9	2.24	1.42	1.39
3	A	401	EMO	C18-C17	2.23	1.45	1.41
2	A	301	NAP	O4D-C1D	2.21	1.44	1.41
3	A	401	EMO	C8-C7	2.19	1.43	1.39
2	A	301	NAP	C6N-N1N	2.15	1.40	1.35
2	B	301	NAP	C6N-N1N	2.13	1.40	1.35
2	B	301	NAP	C3N-C7N	2.05	1.53	1.50
2	A	301	NAP	C3N-C7N	2.04	1.53	1.50

All (15) bond angle outliers are listed below:

Mol	Chain	Res	Type	Atoms	Z	Observed(°)	Ideal(°)
2	B	301	NAP	N3A-C2A-N1A	-4.85	121.09	128.68
2	A	301	NAP	N3A-C2A-N1A	-4.81	121.17	128.68
3	A	401	EMO	C1-C2-C3	3.09	122.50	119.70
2	B	301	NAP	PN-O3-PA	-2.66	123.69	132.83
3	A	401	EMO	C16-C17-C18	-2.60	117.91	120.93
3	A	401	EMO	C17-C16-C9	2.55	123.17	121.01
2	A	301	NAP	PN-O3-PA	-2.50	124.24	132.83
3	A	401	EMO	C7-C6-C5	-2.43	113.51	117.60
3	A	401	EMO	C2-C1-C20	-2.34	118.22	120.93
3	A	401	EMO	C5-C20-C1	2.31	120.56	118.41
2	A	301	NAP	C3B-C2B-C1B	-2.25	98.66	102.89
2	B	301	NAP	C3B-C2B-C1B	-2.23	98.69	102.89
3	A	401	EMO	C7-C18-C17	2.19	120.45	118.41
2	A	301	NAP	C6N-N1N-C2N	-2.11	120.05	121.97
2	B	301	NAP	O4D-C1D-C2D	-2.04	103.95	106.93

There are no chirality outliers.

All (10) torsion outliers are listed below:

Mol	Chain	Res	Type	Atoms
2	B	301	NAP	C5D-O5D-PN-O2N
2	B	301	NAP	O4D-C1D-N1N-C2N
2	A	301	NAP	C5D-O5D-PN-O3
2	B	301	NAP	C5D-O5D-PN-O3
2	B	301	NAP	C5D-O5D-PN-O1N
2	A	301	NAP	PN-O3-PA-O1A
2	A	301	NAP	C2B-O2B-P2B-O2X
2	A	301	NAP	O4B-C4B-C5B-O5B
2	B	301	NAP	O4B-C4B-C5B-O5B
2	A	301	NAP	C5D-O5D-PN-O1N

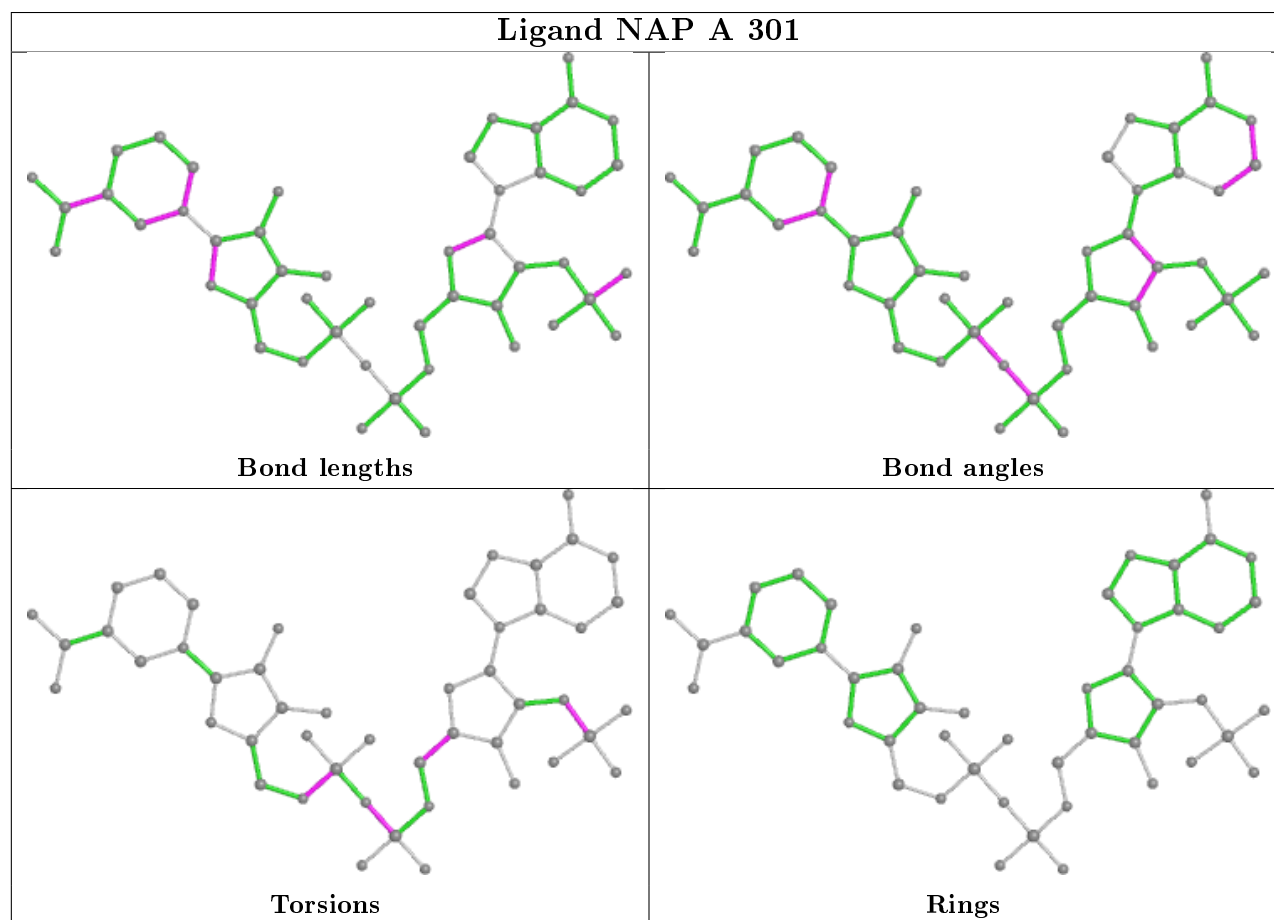
There are no ring outliers.

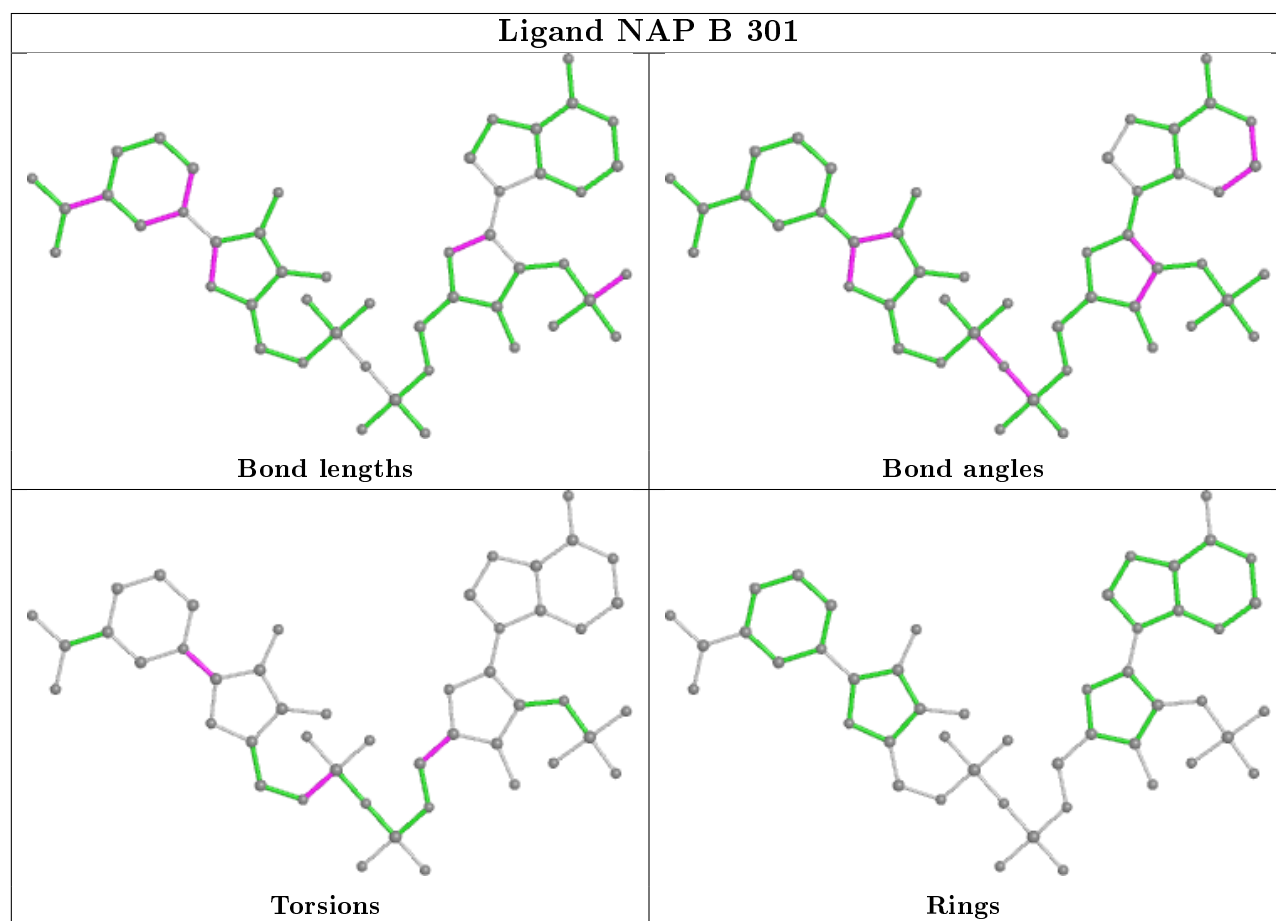
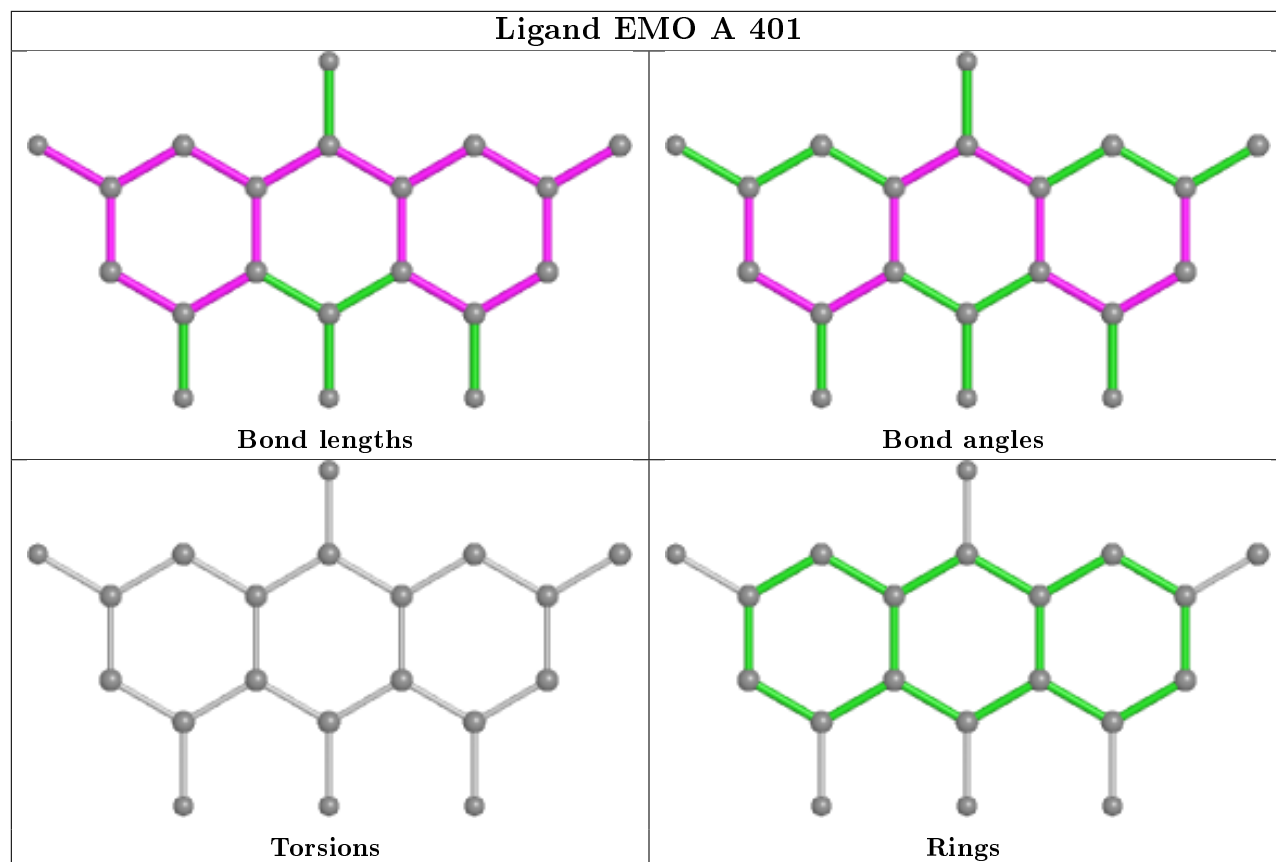
3 monomers are involved in 5 short contacts:

Mol	Chain	Res	Type	Clashes	Symm-Clashes
2	A	301	NAP	1	0
3	A	401	EMO	1	0
2	B	301	NAP	3	0

The following is a two-dimensional graphical depiction of Mogul quality analysis of bond lengths, bond angles, torsion angles, and ring geometry for all instances of the Ligand of Interest. In addition, ligands with molecular weight > 250 and outliers as shown on the validation Tables will

also be included. For torsion angles, if less than 5% of the Mogul distribution of torsion angles is within 10 degrees of the torsion angle in question, then that torsion angle is considered an outlier. Any bond that is central to one or more torsion angles identified as an outlier by Mogul will be highlighted in the graph. For rings, the root-mean-square deviation (RMSD) between the ring in question and similar rings identified by Mogul is calculated over all ring torsion angles. If the average RMSD is greater than 60 degrees and the minimal RMSD between the ring in question and any Mogul-identified rings is also greater than 60 degrees, then that ring is considered an outlier. The outliers are highlighted in purple. The color gray indicates Mogul did not find sufficient equivalents in the CSD to analyse the geometry.





5.7 Other polymers

There are no such residues in this entry.

5.8 Polymer linkage issues

There are no chain breaks in this entry.

6 Fit of model and data ⓘ

6.1 Protein, DNA and RNA chains ⓘ

In the following table, the column labelled ‘#RSRZ> 2’ contains the number (and percentage) of RSRZ outliers, followed by percent RSRZ outliers for the chain as percentile scores relative to all X-ray entries and entries of similar resolution. The OWAB column contains the minimum, median, 95th percentile and maximum values of the occupancy-weighted average B-factor per residue. The column labelled ‘Q< 0.9’ lists the number of (and percentage) of residues with an average occupancy less than 0.9.

Mol	Chain	Analysed	<RSRZ>	#RSRZ>2	OWAB(Å ²)	Q<0.9
1	A	257/277 (92%)	0.31	20 (7%) 13 17	22, 30, 57, 88	0
1	B	268/277 (96%)	0.12	22 (8%) 11 15	20, 31, 65, 93	0
All	All	525/554 (94%)	0.21	42 (8%) 12 16	20, 31, 61, 93	0

All (42) RSRZ outliers are listed below:

Mol	Chain	Res	Type	RSRZ
1	B	206	TRP	6.7
1	B	202	TYR	6.2
1	A	206	TRP	6.1
1	B	207	GLU	6.1
1	A	207	GLU	5.6
1	B	205	ILE	5.3
1	B	204	ASP	5.2
1	B	213	ALA	4.4
1	B	201	HIS	4.1
1	B	212	GLU	3.8
1	B	210	THR	3.8
1	A	211	GLU	3.8
1	A	5	ASP	3.7
1	A	212	GLU	3.7
1	B	261	TYR	3.3
1	A	216	ARG	3.3
1	A	208	VAL	3.2
1	A	209	SER	3.2
1	B	208	VAL	3.1
1	A	210	THR	2.9
1	B	216	ARG	2.9
1	A	165	VAL	2.8
1	B	214	PHE	2.8
1	A	251	ALA	2.7

Continued on next page...

Continued from previous page...

Mol	Chain	Res	Type	RSRZ
1	A	261	TYR	2.5
1	B	197	SER	2.5
1	B	217	ILE	2.5
1	A	186	CYS	2.4
1	B	209	SER	2.4
1	A	220	ARG	2.3
1	A	252	LEU	2.3
1	B	203	SER	2.3
1	A	213	ALA	2.3
1	B	165	VAL	2.3
1	B	41	GLU	2.3
1	B	44	ARG	2.2
1	A	142	ILE	2.2
1	B	211	GLU	2.2
1	A	214	PHE	2.2
1	B	198	VAL	2.2
1	A	164	VAL	2.1
1	A	202	TYR	2.1

6.2 Non-standard residues in protein, DNA, RNA chains ⓘ

There are no non-standard protein/DNA/RNA residues in this entry.

6.3 Carbohydrates ⓘ

There are no carbohydrates in this entry.

6.4 Ligands ⓘ

In the following table, the Atoms column lists the number of modelled atoms in the group and the number defined in the chemical component dictionary. The B-factors column lists the minimum, median, 95th percentile and maximum values of B factors of atoms in the group. The column labelled 'Q< 0.9' lists the number of atoms with occupancy less than 0.9.

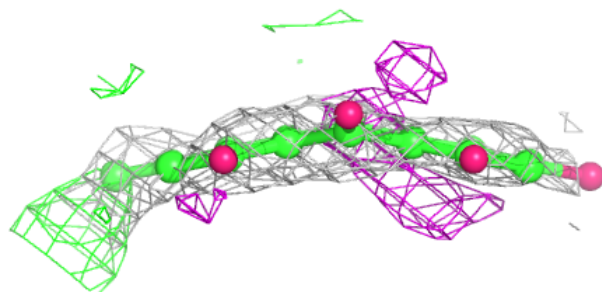
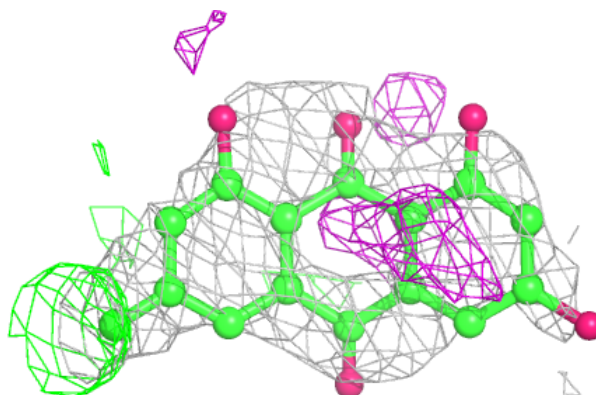
Mol	Type	Chain	Res	Atoms	RSCC	RSR	B-factors(Å ²)	Q<0.9
3	EMO	A	401	20/20	0.61	0.31	77,80,80,81	0
2	NAP	B	301	48/48	0.96	0.10	28,33,37,37	0
2	NAP	A	301	48/48	0.98	0.12	23,26,30,33	0

The following is a graphical depiction of the model fit to experimental electron density of all

instances of the Ligand of Interest. In addition, ligands with molecular weight > 250 and outliers as shown on the geometry validation Tables will also be included. Each fit is shown from different orientation to approximate a three-dimensional view.

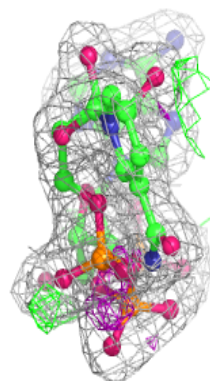
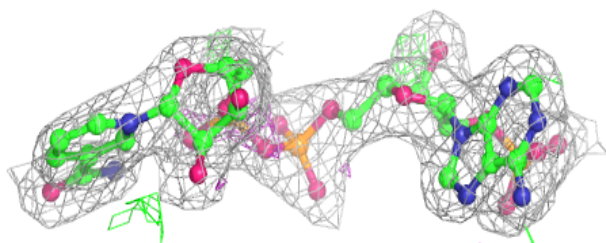
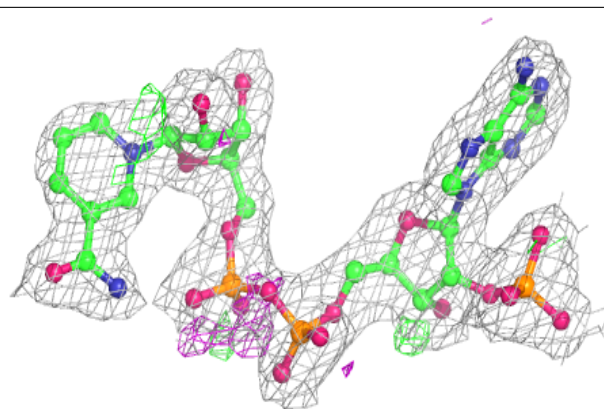
Electron density around EMO A 401:

$2mF_o-DF_c$ (at 0.7 rmsd) in gray
 mF_o-DF_c (at 3 rmsd) in purple (negative)
and green (positive)

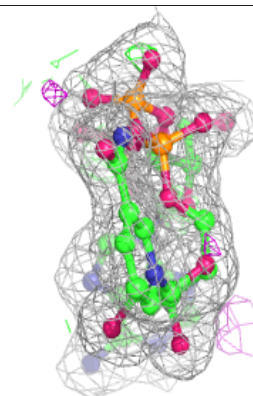
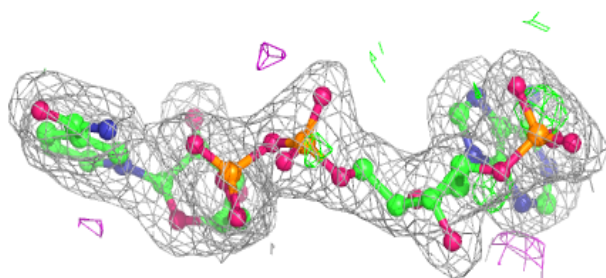
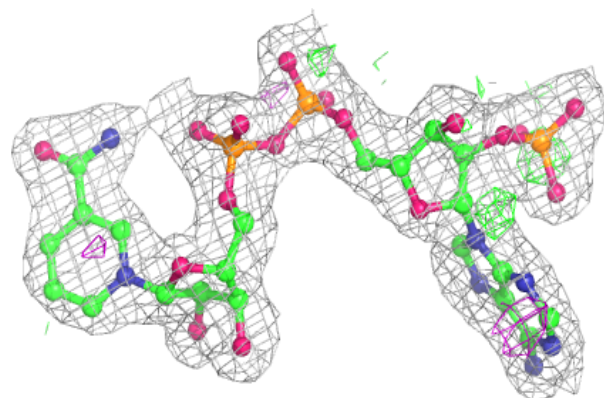


Electron density around NAP B 301:

$2mF_o-DF_c$ (at 0.7 rmsd) in gray
 mF_o-DF_c (at 3 rmsd) in purple (negative)
and green (positive)

**Electron density around NAP A 301:**

$2mF_o-DF_c$ (at 0.7 rmsd) in gray
 mF_o-DF_c (at 3 rmsd) in purple (negative)
and green (positive)



6.5 Other polymers [i](#)

There are no such residues in this entry.