



Full wwPDB X-ray Structure Validation Report ⓘ

May 16, 2020 – 07:39 am BST

PDB ID : 3RH5
Title : DNA Polymerase Beta Mutant (Y271) with a dideoxy-terminated primer with an incoming deoxynucleotide (dCTP)
Authors : Cavanaugh, N.A.; Beard, W.A.; Batra, V.K.; Perera, L.; Pedersen, L.G.; Wilson, S.H.
Deposited on : 2011-04-11
Resolution : 2.10 Å(reported)

This is a Full wwPDB X-ray Structure Validation Report for a publicly released PDB entry.

We welcome your comments at validation@mail.wwpdb.org

A user guide is available at

<https://www.wwpdb.org/validation/2017/XrayValidationReportHelp>

with specific help available everywhere you see the ⓘ symbol.

The following versions of software and data (see [references ⓘ](#)) were used in the production of this report:

MolProbity : 4.02b-467
Mogul : 1.8.5 (274361), CSD as541be (2020)
Xtriage (Phenix) : 1.13
EDS : 2.11
buster-report : 1.1.7 (2018)
Percentile statistics : 20191225.v01 (using entries in the PDB archive December 25th 2019)
Refmac : 5.8.0158
CCP4 : 7.0.044 (Gargrove)
Ideal geometry (proteins) : Engh & Huber (2001)
Ideal geometry (DNA, RNA) : Parkinson et al. (1996)
Validation Pipeline (wwPDB-VP) : 2.11

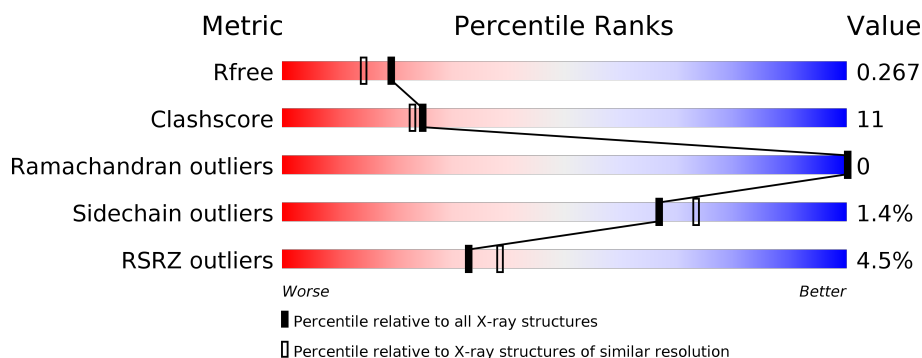
1 Overall quality at a glance

The following experimental techniques were used to determine the structure:

X-RAY DIFFRACTION

The reported resolution of this entry is 2.10 Å.

Percentile scores (ranging between 0-100) for global validation metrics of the entry are shown in the following graphic. The table shows the number of entries on which the scores are based.



Metric	Whole archive (#Entries)	Similar resolution (#Entries, resolution range(Å))
R_{free}	130704	5197 (2.10-2.10)
Clashscore	141614	5710 (2.10-2.10)
Ramachandran outliers	138981	5647 (2.10-2.10)
Sidechain outliers	138945	5648 (2.10-2.10)
RSRZ outliers	127900	5083 (2.10-2.10)

The table below summarises the geometric issues observed across the polymeric chains and their fit to the electron density. The red, orange, yellow and green segments on the lower bar indicate the fraction of residues that contain outliers for ≥ 3 , 2, 1 and 0 types of geometric quality criteria respectively. A grey segment represents the fraction of residues that are not modelled. The numeric value for each fraction is indicated below the corresponding segment, with a dot representing fractions $\leq 5\%$. The upper red bar (where present) indicates the fraction of residues that have poor fit to the electron density. The numeric value is given above the bar.

Mol	Chain	Length	Quality of chain
1	A	335	<div> <div>5%</div> <div> <div></div> <div>77%</div> <div>20%</div> <div></div> </div> </div>
2	T	16	<div> <div>38%</div> <div>63%</div> </div>
3	P	10	<div> <div>50%</div> <div>40%</div> <div>10%</div> </div>
4	D	5	<div> <div>40%</div> <div>60%</div> </div>

2 Entry composition

There are 9 unique types of molecules in this entry. The entry contains 3592 atoms, of which 0 are hydrogens and 0 are deuteriums.

In the tables below, the ZeroOcc column contains the number of atoms modelled with zero occupancy, the AltConf column contains the number of residues with at least one atom in alternate conformation and the Trace column contains the number of residues modelled with at most 2 atoms.

- Molecule 1 is a protein called DNA polymerase beta.

Mol	Chain	Residues	Atoms					ZeroOcc	AltConf	Trace
1	A	326	Total	C	N	O	S	0	0	0
			2605	1644	457	495	9			

There is a discrepancy between the modelled and reference sequences:

Chain	Residue	Modelled	Actual	Comment	Reference
A	271	ALA	TYR	ENGINEERED MUTATION	UNP P06746

- Molecule 2 is a DNA chain called 5'-D(*CP*CP*GP*AP*CP*GP*CP*CP*GP*CP*AP*T
P*CP*AP*GP*C)-3'.

Mol	Chain	Residues	Atoms					ZeroOcc	AltConf	Trace
2	T	16	Total	C	N	O	P	0	0	0
			320	152	61	92	15			

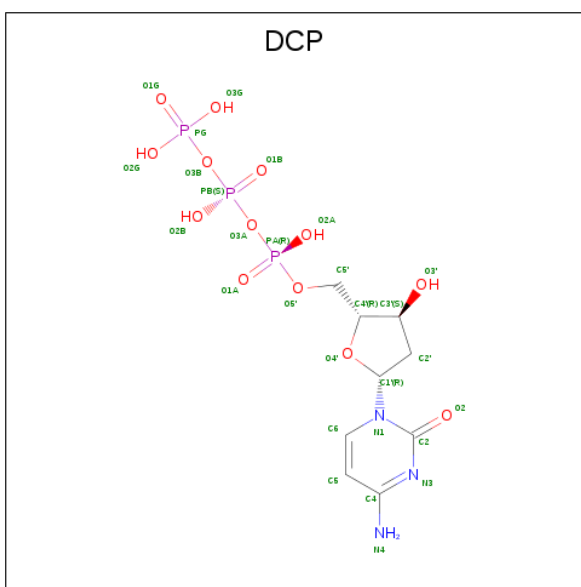
- Molecule 3 is a DNA chain called 5'-D(*GP*CP*TP*GP*AP*TP*GP*CP*GP*(DDG))-3'.

Mol	Chain	Residues	Atoms					ZeroOcc	AltConf	Trace
3	P	10	Total	C	N	O	P	0	0	0
			205	98	40	58	9			

- Molecule 4 is a DNA chain called 5'-D(P*GP*TP*CP*GP*G)-3'.

Mol	Chain	Residues	Atoms					ZeroOcc	AltConf	Trace
4	D	5	Total	C	N	O	P	0	0	0
			106	49	20	32	5			

- Molecule 5 is 2'-DEOXYCYTIDINE-5'-TRIPHOSPHATE (three-letter code: DCP) (formula: C₉H₁₆N₃O₁₃P₃).



Mol	Chain	Residues	Atoms					ZeroOcc	AltConf
5	A	1	Total	C	N	O	P	0	0
			28	9	3	13	3		
5	A	1	Total	C	N	O	P	0	0
			28	9	3	13	3		

- Molecule 6 is MANGANESE (II) ION (three-letter code: MN) (formula: Mn).

Mol	Chain	Residues	Atoms		ZeroOcc	AltConf
6	D	1	Total	Mn	0	0
			1	1		
6	A	5	Total	Mn	0	0
			5	5		
6	T	1	Total	Mn	0	0
			1	1		

- Molecule 7 is SODIUM ION (three-letter code: NA) (formula: Na).

Mol	Chain	Residues	Atoms		ZeroOcc	AltConf
7	A	2	Total	Na	0	0
			2	2		

- Molecule 8 is CHLORIDE ION (three-letter code: CL) (formula: Cl).

Mol	Chain	Residues	Atoms		ZeroOcc	AltConf
8	A	5	Total	Cl	0	0
			5	5		

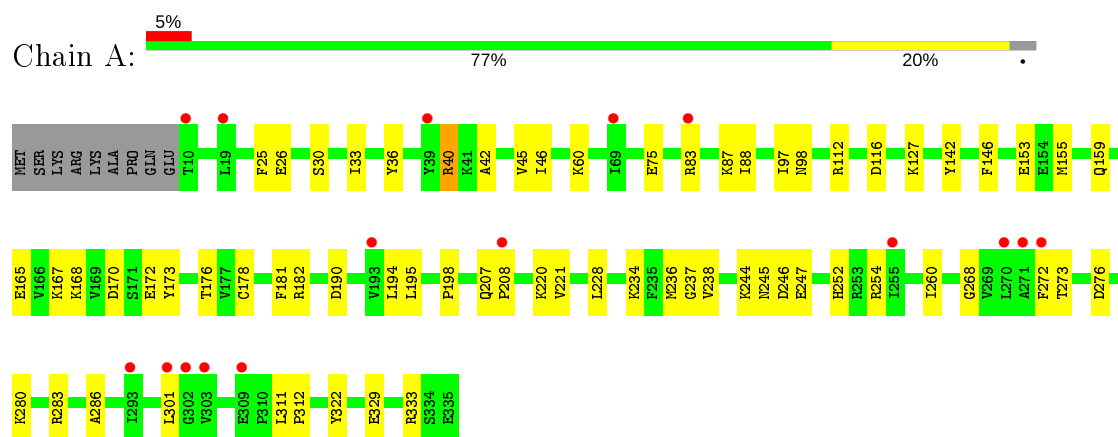
- Molecule 9 is water.

Mol	Chain	Residues	Atoms		ZeroOcc	AltConf
9	A	222	Total 222	O 222	0	0
9	T	36	Total 36	O 36	0	0
9	P	16	Total 16	O 16	0	0
9	D	12	Total 12	O 12	0	0

3 Residue-property plots [i](#)

These plots are drawn for all protein, RNA and DNA chains in the entry. The first graphic for a chain summarises the proportions of the various outlier classes displayed in the second graphic. The second graphic shows the sequence view annotated by issues in geometry and electron density. Residues are color-coded according to the number of geometric quality criteria for which they contain at least one outlier: green = 0, yellow = 1, orange = 2 and red = 3 or more. A red dot above a residue indicates a poor fit to the electron density ($RSRZ > 2$). Stretches of 2 or more consecutive residues without any outlier are shown as a green connector. Residues present in the sample, but not in the model, are shown in grey.

- Molecule 1: DNA polymerase beta



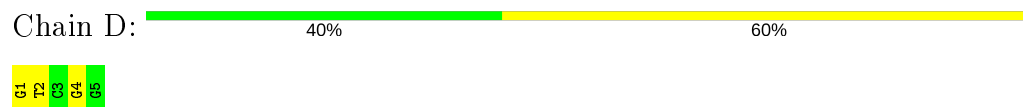
- Molecule 2: 5'-D(*CP*CP*GP*AP*CP*GP*CP*CP*GP*CP*AP*TP*CP*AP*GP*C)-3'



- Molecule 3: 5'-D(*GP*CP*TP*GP*AP*TP*GP*CP*GP*(DDG))-3'



- Molecule 4: 5'-D(P*GP*TP*CP*GP*G)-3'



4 Data and refinement statistics

Property	Value	Source
Space group	P 1 21 1	Depositor
Cell constants a, b, c, α , β , γ	51.22Å 79.92Å 55.09Å 90.00° 107.93° 90.00°	Depositor
Resolution (Å)	20.70 – 2.10 20.70 – 2.10	Depositor EDS
% Data completeness (in resolution range)	82.1 (20.70-2.10) 82.1 (20.70-2.10)	Depositor EDS
R_{merge}	0.11	Depositor
R_{sym}	(Not available)	Depositor
$\langle I/\sigma(I) \rangle$ ¹	2.28 (at 2.09Å)	Xtriage
Refinement program	PHENIX (phenix.refine: 1.5_2)	Depositor
R, R_{free}	0.208 , 0.281 0.192 , 0.267	Depositor DCC
R_{free} test set	2396 reflections (9.84%)	wwPDB-VP
Wilson B-factor (Å ²)	29.7	Xtriage
Anisotropy	0.243	Xtriage
Bulk solvent k_{sol} (e/Å ³), B_{sol} (Å ²)	0.35 , 45.7	EDS
L-test for twinning ²	$\langle L \rangle = 0.46$, $\langle L^2 \rangle = 0.29$	Xtriage
Estimated twinning fraction	No twinning to report.	Xtriage
F_o, F_c correlation	0.94	EDS
Total number of atoms	3592	wwPDB-VP
Average B, all atoms (Å ²)	32.0	wwPDB-VP

Xtriage's analysis on translational NCS is as follows: *The largest off-origin peak in the Patterson function is 6.94% of the height of the origin peak. No significant pseudotranslation is detected.*

¹Intensities estimated from amplitudes.

²Theoretical values of $\langle |L| \rangle$, $\langle L^2 \rangle$ for acentric reflections are 0.5, 0.333 respectively for untwinned datasets, and 0.375, 0.2 for perfectly twinned datasets.

5 Model quality ⓘ

5.1 Standard geometry ⓘ

Bond lengths and bond angles in the following residue types are not validated in this section: NA, MN, DDG, DCP, CL

The Z score for a bond length (or angle) is the number of standard deviations the observed value is removed from the expected value. A bond length (or angle) with $|Z| > 5$ is considered an outlier worth inspection. RMSZ is the root-mean-square of all Z scores of the bond lengths (or angles).

Mol	Chain	Bond lengths		Bond angles	
		RMSZ	$\# Z > 5$	RMSZ	$\# Z > 5$
1	A	0.38	0/2653	0.54	0/3564
2	T	0.70	0/358	1.32	4/549 (0.7%)
3	P	0.77	0/206	1.55	2/317 (0.6%)
4	D	1.24	1/118 (0.8%)	1.48	1/179 (0.6%)
All	All	0.51	1/3335 (0.0%)	0.83	7/4609 (0.2%)

All (1) bond length outliers are listed below:

Mol	Chain	Res	Type	Atoms	Z	Observed(Å)	Ideal(Å)
4	D	1	DG	OP3-P	-10.92	1.48	1.61

All (7) bond angle outliers are listed below:

Mol	Chain	Res	Type	Atoms	Z	Observed(°)	Ideal(°)
2	T	6	DG	O4'-C1'-N9	-9.81	101.13	108.00
4	D	2	DT	O4'-C1'-N1	-8.88	101.78	108.00
2	T	11	DA	O4'-C1'-N9	-6.60	103.38	108.00
2	T	10	DC	P-O3'-C3'	5.59	126.41	119.70
3	P	8	DC	C1'-O4'-C4'	-5.59	104.50	110.10
3	P	7	DG	O4'-C1'-N9	-5.40	104.22	108.00
2	T	7	DC	P-O3'-C3'	5.25	126.00	119.70

There are no chirality outliers.

There are no planarity outliers.

5.2 Too-close contacts ⓘ

In the following table, the Non-H and H(model) columns list the number of non-hydrogen atoms and hydrogen atoms in the chain respectively. The H(added) column lists the number of hydrogen

atoms added and optimized by MolProbity. The Clashes column lists the number of clashes within the asymmetric unit, whereas Symm-Clashes lists symmetry related clashes.

Mol	Chain	Non-H	H(model)	H(added)	Clashes	Symm-Clashes
1	A	2605	0	2624	55	0
2	T	320	0	179	8	0
3	P	205	0	114	3	0
4	D	106	0	57	1	0
5	A	56	0	21	3	0
6	A	5	0	0	0	0
6	D	1	0	0	0	0
6	T	1	0	0	0	0
7	A	2	0	0	0	0
8	A	5	0	0	1	0
9	A	222	0	0	7	0
9	D	12	0	0	1	0
9	P	16	0	0	1	0
9	T	36	0	0	1	0
All	All	3592	0	2995	68	0

The all-atom clashscore is defined as the number of clashes found per 1000 atoms (including hydrogen atoms). The all-atom clashscore for this structure is 11.

All (68) close contacts within the same asymmetric unit are listed below, sorted by their clash magnitude.

Atom-1	Atom-2	Interatomic distance (Å)	Clash overlap (Å)
1:A:112:ARG:HG3	9:A:388:HOH:O	1.86	0.75
1:A:40:ARG:HG2	1:A:40:ARG:HH11	1.52	0.74
2:T:2:DC:H5'	2:T:2:DC:C6	2.23	0.73
2:T:2:DC:N3	9:T:85:HOH:O	2.23	0.72
1:A:194:LEU:HD11	1:A:260:ILE:HG12	1.73	0.70
1:A:40:ARG:HG2	1:A:40:ARG:NH1	2.11	0.64
1:A:245:ASN:O	1:A:246:ASP:HB2	1.99	0.62
1:A:83:ARG:O	1:A:87:LYS:HG2	2.01	0.61
3:P:2:DC:H2''	3:P:3:DT:O5'	2.01	0.60
1:A:159:GLN:NE2	8:A:353:CL:CL	2.71	0.60
1:A:244:LYS:HB2	1:A:247:GLU:OE1	2.02	0.59
5:A:350:DCP:H5'1	5:A:350:DCP:PB	2.44	0.58
1:A:40:ARG:NH2	1:A:276:ASP:OD2	2.38	0.56
1:A:228:LEU:HD12	1:A:236:MET:HG2	1.88	0.55
2:T:1:DC:H2''	2:T:2:DC:H5'	1.89	0.55
1:A:42:ALA:O	1:A:45:VAL:HG12	2.07	0.54
1:A:228:LEU:HB2	1:A:236:MET:HG2	1.90	0.54

Continued on next page...

Continued from previous page...

Atom-1	Atom-2	Interatomic distance (Å)	Clash overlap (Å)
2:T:2:DC:H2''	2:T:3:DG:O5'	2.09	0.53
1:A:228:LEU:HG	1:A:237:GLY:HA2	1.92	0.51
1:A:329:GLU:O	1:A:333:ARG:HG3	2.09	0.51
1:A:208:PRO:HA	9:A:553:HOH:O	2.11	0.51
1:A:25:PHE:CE2	1:A:88:ILE:HG12	2.47	0.50
1:A:194:LEU:HD12	1:A:195:LEU:H	1.77	0.49
1:A:178:CYS:HA	1:A:182:ARG:HB2	1.94	0.49
1:A:194:LEU:HD12	1:A:195:LEU:N	2.27	0.49
1:A:33:ILE:HG22	9:A:392:HOH:O	2.12	0.48
1:A:311:LEU:HD13	1:A:322:TYR:CE1	2.49	0.48
1:A:40:ARG:HH11	1:A:40:ARG:CG	2.22	0.48
1:A:194:LEU:HD11	1:A:260:ILE:CG1	2.40	0.48
1:A:36:TYR:CZ	1:A:40:ARG:HD2	2.48	0.48
1:A:26:GLU:HA	1:A:30:SER:HB2	1.96	0.48
1:A:165:GLU:HA	1:A:168:LYS:HD3	1.96	0.47
5:A:350:DCP:H5'2	5:A:350:DCP:O1G	2.14	0.47
1:A:97:ILE:CD1	1:A:112:ARG:HG2	2.45	0.47
1:A:176:THR:OG1	5:A:350:DCP:H5	2.14	0.47
2:T:13:DC:H2''	2:T:14:DA:H5'	1.97	0.46
1:A:153:GLU:HG2	9:A:368:HOH:O	2.15	0.46
1:A:45:VAL:CG1	1:A:46:ILE:N	2.79	0.46
3:P:7:DG:H2'	9:P:285:HOH:O	2.15	0.46
1:A:283:ARG:O	1:A:286:ALA:HB3	2.16	0.46
1:A:98:ASN:CG	9:A:442:HOH:O	2.53	0.46
1:A:190:ASP:OD1	1:A:190:ASP:C	2.55	0.45
1:A:170:ASP:HB3	1:A:173:TYR:CD2	2.52	0.45
4:D:4:DG:H3'	9:D:142:HOH:O	2.16	0.44
1:A:60:LYS:HG2	1:A:60:LYS:O	2.16	0.44
1:A:254:ARG:NH2	3:P:10:DDG:OP1	2.46	0.44
1:A:312:PRO:HA	9:A:561:HOH:O	2.16	0.44
1:A:172:GLU:HB3	1:A:198:PRO:HG2	1.99	0.44
1:A:75:GLU:OE2	1:A:83:ARG:HG3	2.17	0.43
1:A:155:MET:HE2	1:A:181:PHE:HB2	2.00	0.43
1:A:207:GLN:HA	1:A:208:PRO:HD3	1.89	0.43
1:A:182:ARG:HD3	1:A:273:THR:OG1	2.19	0.43
1:A:260:ILE:CD1	1:A:268:GLY:HA3	2.49	0.43
1:A:45:VAL:HG13	1:A:46:ILE:N	2.34	0.43
1:A:234:LYS:HE3	1:A:236:MET:CE	2.50	0.42
2:T:1:DC:H2''	2:T:2:DC:C5	2.55	0.42
1:A:165:GLU:OE1	1:A:221:VAL:HG11	2.19	0.41
1:A:280:LYS:HB3	1:A:280:LYS:NZ	2.35	0.41

Continued on next page...

Continued from previous page...

Atom-1	Atom-2	Interatomic distance (Å)	Clash overlap (Å)
1:A:146:PHE:HZ	1:A:238:VAL:HG22	1.86	0.41
2:T:2:DC:C2'	2:T:3:DG:C8	3.03	0.41
2:T:3:DG:H2''	2:T:4:DA:OP2	2.18	0.41
1:A:194:LEU:HD11	1:A:260:ILE:CD1	2.50	0.41
1:A:36:TYR:CZ	1:A:40:ARG:CD	3.04	0.41
1:A:97:ILE:HD13	1:A:112:ARG:HG2	2.04	0.40
1:A:127:LYS:HB2	1:A:127:LYS:HE3	1.88	0.40
1:A:167:LYS:NZ	9:A:409:HOH:O	2.53	0.40
1:A:142:TYR:CE1	1:A:252:HIS:CG	3.09	0.40
1:A:301:LEU:HA	1:A:301:LEU:HD23	1.92	0.40

There are no symmetry-related clashes.

5.3 Torsion angles ⓘ

5.3.1 Protein backbone ⓘ

In the following table, the Percentiles column shows the percent Ramachandran outliers of the chain as a percentile score with respect to all X-ray entries followed by that with respect to entries of similar resolution.

The Analysed column shows the number of residues for which the backbone conformation was analysed, and the total number of residues.

Mol	Chain	Analysed	Favoured	Allowed	Outliers	Percentiles	
1	A	324/335 (97%)	305 (94%)	19 (6%)	0	100	100

There are no Ramachandran outliers to report.

5.3.2 Protein sidechains ⓘ

In the following table, the Percentiles column shows the percent sidechain outliers of the chain as a percentile score with respect to all X-ray entries followed by that with respect to entries of similar resolution.

The Analysed column shows the number of residues for which the sidechain conformation was analysed, and the total number of residues.

Mol	Chain	Analysed	Rotameric	Outliers	Percentiles	
1	A	285/294 (97%)	281 (99%)	4 (1%)	67	73

All (4) residues with a non-rotameric sidechain are listed below:

Mol	Chain	Res	Type
1	A	40	ARG
1	A	116	ASP
1	A	220	LYS
1	A	272	PHE

Some sidechains can be flipped to improve hydrogen bonding and reduce clashes. All (2) such sidechains are listed below:

Mol	Chain	Res	Type
1	A	157	GLN
1	A	219	GLN

5.3.3 RNA ⓘ

There are no RNA molecules in this entry.

5.4 Non-standard residues in protein, DNA, RNA chains ⓘ

1 non-standard protein/DNA/RNA residue is modelled in this entry.

In the following table, the Counts columns list the number of bonds (or angles) for which Mogul statistics could be retrieved, the number of bonds (or angles) that are observed in the model and the number of bonds (or angles) that are defined in the Chemical Component Dictionary. The Link column lists molecule types, if any, to which the group is linked. The Z score for a bond length (or angle) is the number of standard deviations the observed value is removed from the expected value. A bond length (or angle) with $|Z| > 2$ is considered an outlier worth inspection. RMSZ is the root-mean-square of all Z scores of the bond lengths (or angles).

Mol	Type	Chain	Res	Link	Bond lengths			Bond angles		
					Counts	RMSZ	# $ Z > 2$	Counts	RMSZ	# $ Z > 2$
3	DDG	P	10	3,2	17,23,24	1.24	2 (11%)	15,33,36	2.91	5 (33%)

In the following table, the Chirals column lists the number of chiral outliers, the number of chiral centers analysed, the number of these observed in the model and the number defined in the Chemical Component Dictionary. Similar counts are reported in the Torsion and Rings columns. '-' means no outliers of that kind were identified.

Mol	Type	Chain	Res	Link	Chirals	Torsions	Rings
3	DDG	P	10	3,2	-	0/3/18/19	0/3/3/3

All (2) bond length outliers are listed below:

Mol	Chain	Res	Type	Atoms	Z	Observed(Å)	Ideal(Å)
3	P	10	DDG	C6-N1	3.94	1.39	1.33
3	P	10	DDG	C8-N7	-2.08	1.31	1.34

All (5) bond angle outliers are listed below:

Mol	Chain	Res	Type	Atoms	Z	Observed(°)	Ideal(°)
3	P	10	DDG	C5-C6-N1	-8.27	112.12	123.43
3	P	10	DDG	C6-N1-C2	5.21	124.20	115.93
3	P	10	DDG	C2-N3-C4	-3.16	111.75	115.36
3	P	10	DDG	N3-C2-N1	-2.33	124.12	127.22
3	P	10	DDG	C6-C5-C4	-2.04	118.85	120.80

There are no chirality outliers.

There are no torsion outliers.

There are no ring outliers.

1 monomer is involved in 1 short contact:

Mol	Chain	Res	Type	Clashes	Symm-Clashes
3	P	10	DDG	1	0

5.5 Carbohydrates [i](#)

There are no carbohydrates in this entry.

5.6 Ligand geometry [i](#)

Of 16 ligands modelled in this entry, 14 are monoatomic - leaving 2 for Mogul analysis.

In the following table, the Counts columns list the number of bonds (or angles) for which Mogul statistics could be retrieved, the number of bonds (or angles) that are observed in the model and the number of bonds (or angles) that are defined in the Chemical Component Dictionary. The Link column lists molecule types, if any, to which the group is linked. The Z score for a bond length (or angle) is the number of standard deviations the observed value is removed from the expected value. A bond length (or angle) with $|Z| > 2$ is considered an outlier worth inspection. RMSZ is the root-mean-square of all Z scores of the bond lengths (or angles).

Mol	Type	Chain	Res	Link	Bond lengths			Bond angles		
					Counts	RMSZ	$\# Z > 2$	Counts	RMSZ	$\# Z > 2$
5	DCP	A	350	6	23,29,29	1.73	5 (21%)	30,45,45	1.83	10 (33%)
5	DCP	A	338	6	23,29,29	1.58	6 (26%)	30,45,45	1.53	6 (20%)

In the following table, the Chirals column lists the number of chiral outliers, the number of chiral centers analysed, the number of these observed in the model and the number defined in the Chemical Component Dictionary. Similar counts are reported in the Torsion and Rings columns. '-' means no outliers of that kind were identified.

Mol	Type	Chain	Res	Link	Chirals	Torsions	Rings
5	DCP	A	350	6	-	8/19/34/34	0/2/2/2
5	DCP	A	338	6	-	3/19/34/34	0/2/2/2

All (11) bond length outliers are listed below:

Mol	Chain	Res	Type	Atoms	Z	Observed(Å)	Ideal(Å)
5	A	350	DCP	C6-N1	4.25	1.41	1.35
5	A	338	DCP	C6-N1	3.36	1.40	1.35
5	A	350	DCP	O4'-C1'	2.96	1.49	1.42
5	A	350	DCP	C4-N4	2.91	1.43	1.35
5	A	338	DCP	C4-N4	2.70	1.43	1.35
5	A	338	DCP	O4'-C1'	2.59	1.48	1.42
5	A	350	DCP	C1'-N1	-2.38	1.42	1.49
5	A	350	DCP	O3'-C3'	-2.36	1.38	1.43
5	A	338	DCP	PB-O1B	2.08	1.58	1.50
5	A	338	DCP	C1'-N1	-2.07	1.43	1.49
5	A	338	DCP	C2'-C3'	-2.03	1.47	1.52

All (16) bond angle outliers are listed below:

Mol	Chain	Res	Type	Atoms	Z	Observed(°)	Ideal(°)
5	A	350	DCP	O5'-C5'-C4'	3.82	122.12	108.99
5	A	350	DCP	C2'-C1'-N1	3.62	122.61	114.27
5	A	338	DCP	C2-N3-C4	3.61	120.00	116.34
5	A	350	DCP	C2-N3-C4	3.41	119.80	116.34
5	A	350	DCP	O4'-C4'-C5'	3.21	119.94	109.37
5	A	338	DCP	C2'-C1'-N1	3.07	121.34	114.27
5	A	350	DCP	PB-O3B-PG	-2.93	122.77	132.83
5	A	338	DCP	O3'-C3'-C2'	2.90	121.28	110.90
5	A	350	DCP	PB-O3A-PA	-2.67	123.66	132.83
5	A	350	DCP	C2'-C3'-C4'	2.48	107.94	102.76
5	A	338	DCP	O3'-C3'-C4'	2.40	119.30	110.10
5	A	338	DCP	O4'-C1'-C2'	-2.39	101.73	106.25
5	A	350	DCP	N4-C4-N3	2.30	120.13	116.49
5	A	338	DCP	N4-C4-N3	2.14	119.88	116.49
5	A	350	DCP	O3'-C3'-C4'	2.06	118.00	110.10
5	A	350	DCP	O3'-C3'-C2'	2.04	118.18	110.90

There are no chirality outliers.

All (11) torsion outliers are listed below:

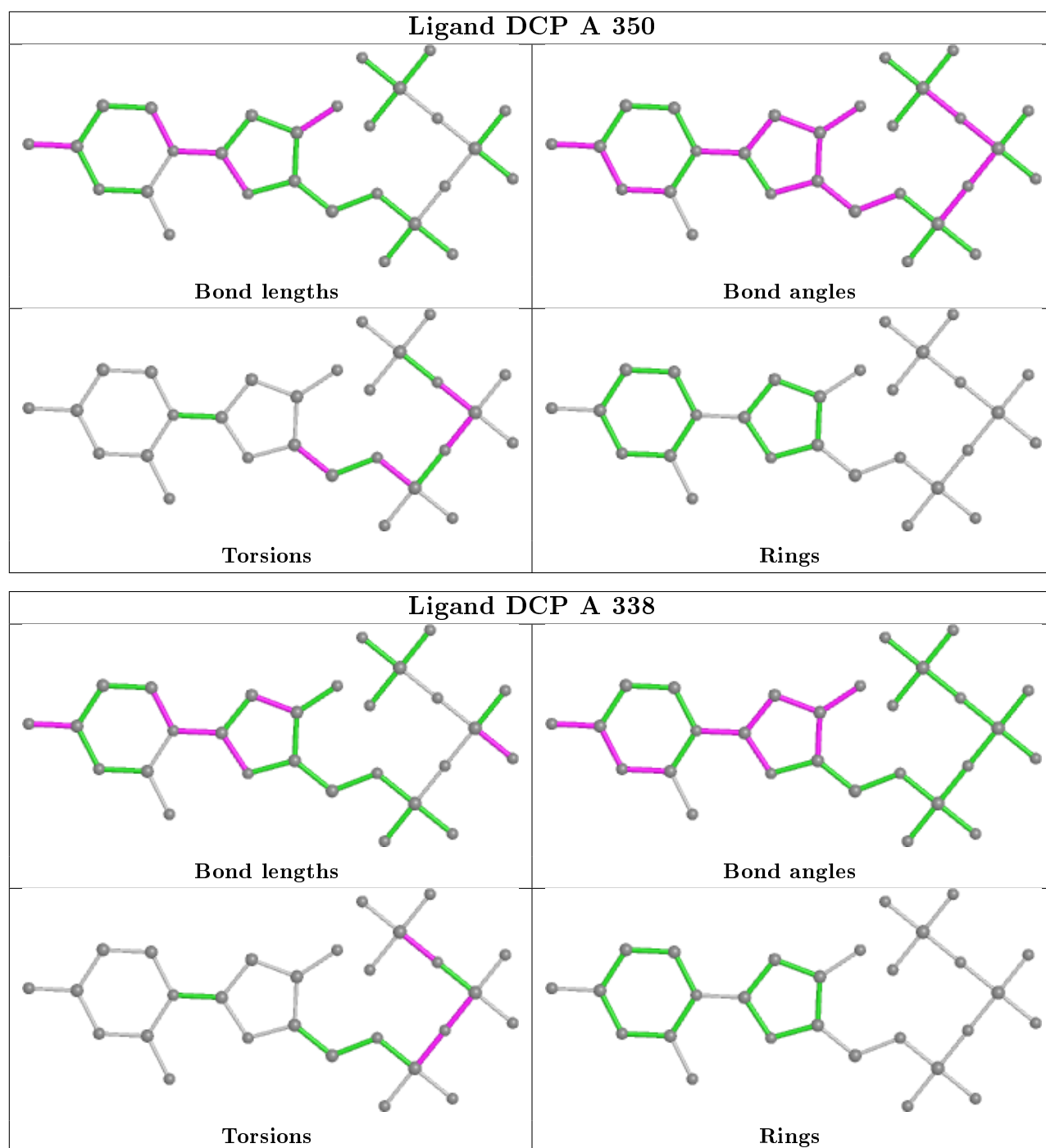
Mol	Chain	Res	Type	Atoms
5	A	350	DCP	C5'-O5'-PA-O1A
5	A	350	DCP	C5'-O5'-PA-O3A
5	A	350	DCP	O4'-C4'-C5'-O5'
5	A	338	DCP	PA-O3A-PB-O1B
5	A	338	DCP	PB-O3B-PG-O2G
5	A	350	DCP	C5'-O5'-PA-O2A
5	A	350	DCP	PA-O3A-PB-O3B
5	A	338	DCP	PB-O3A-PA-O2A
5	A	350	DCP	PA-O3A-PB-O1B
5	A	350	DCP	PA-O3A-PB-O2B
5	A	350	DCP	PG-O3B-PB-O2B

There are no ring outliers.

1 monomer is involved in 3 short contacts:

Mol	Chain	Res	Type	Clashes	Symm-Clashes
5	A	350	DCP	3	0

The following is a two-dimensional graphical depiction of Mogul quality analysis of bond lengths, bond angles, torsion angles, and ring geometry for all instances of the Ligand of Interest. In addition, ligands with molecular weight > 250 and outliers as shown on the validation Tables will also be included. For torsion angles, if less than 5% of the Mogul distribution of torsion angles is within 10 degrees of the torsion angle in question, then that torsion angle is considered an outlier. Any bond that is central to one or more torsion angles identified as an outlier by Mogul will be highlighted in the graph. For rings, the root-mean-square deviation (RMSD) between the ring in question and similar rings identified by Mogul is calculated over all ring torsion angles. If the average RMSD is greater than 60 degrees and the minimal RMSD between the ring in question and any Mogul-identified rings is also greater than 60 degrees, then that ring is considered an outlier. The outliers are highlighted in purple. The color gray indicates Mogul did not find sufficient equivalents in the CSD to analyse the geometry.



5.7 Other polymers [i](#)

There are no such residues in this entry.

5.8 Polymer linkage issues [i](#)

There are no chain breaks in this entry.

6 Fit of model and data [i](#)

6.1 Protein, DNA and RNA chains [i](#)

In the following table, the column labelled ‘#RSRZ> 2’ contains the number (and percentage) of RSRZ outliers, followed by percent RSRZ outliers for the chain as percentile scores relative to all X-ray entries and entries of similar resolution. The OWAB column contains the minimum, median, 95th percentile and maximum values of the occupancy-weighted average B-factor per residue. The column labelled ‘Q< 0.9’ lists the number of (and percentage) of residues with an average occupancy less than 0.9.

Mol	Chain	Analysed	<RSRZ>	#RSRZ>2	OWAB(Å ²)	Q<0.9
1	A	326/335 (97%)	0.28	16 (4%) 29 35	20, 31, 45, 54	0
2	T	16/16 (100%)	-0.14	0 100 100	25, 33, 52, 53	0
3	P	9/10 (90%)	-0.05	0 100 100	24, 33, 40, 41	0
4	D	5/5 (100%)	-0.14	0 100 100	31, 31, 38, 39	0
All	All	356/366 (97%)	0.25	16 (4%) 33 38	20, 31, 45, 54	0

All (16) RSRZ outliers are listed below:

Mol	Chain	Res	Type	RSRZ
1	A	302	GLY	3.3
1	A	309	GLU	3.3
1	A	303	VAL	3.2
1	A	271	ALA	2.8
1	A	293	ILE	2.7
1	A	208	PRO	2.7
1	A	69	ILE	2.7
1	A	193	VAL	2.7
1	A	255	ILE	2.7
1	A	10	THR	2.7
1	A	19	LEU	2.6
1	A	270	LEU	2.6
1	A	39	TYR	2.4
1	A	272	PHE	2.1
1	A	301	LEU	2.1
1	A	83	ARG	2.0

6.2 Non-standard residues in protein, DNA, RNA chains [i](#)

In the following table, the Atoms column lists the number of modelled atoms in the group and the number defined in the chemical component dictionary. The B-factors column lists the minimum,

median, 95th percentile and maximum values of B factors of atoms in the group. The column labelled 'Q< 0.9' lists the number of atoms with occupancy less than 0.9.

Mol	Type	Chain	Res	Atoms	RSCC	RSR	B-factors(Å ²)	Q<0.9
3	DDG	P	10	21/22	0.97	0.11	22,25,29,31	0

6.3 Carbohydrates [i](#)

There are no carbohydrates in this entry.

6.4 Ligands [i](#)

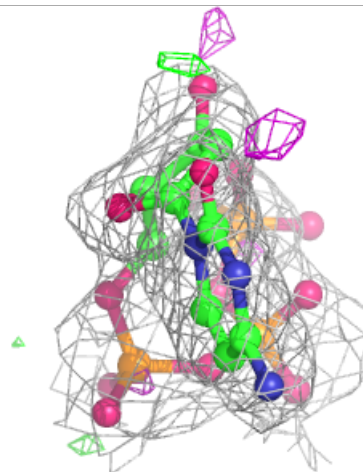
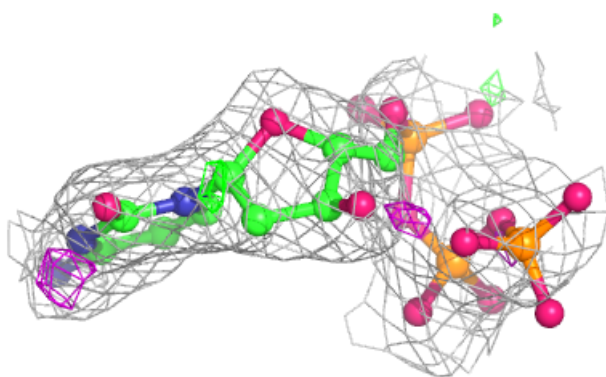
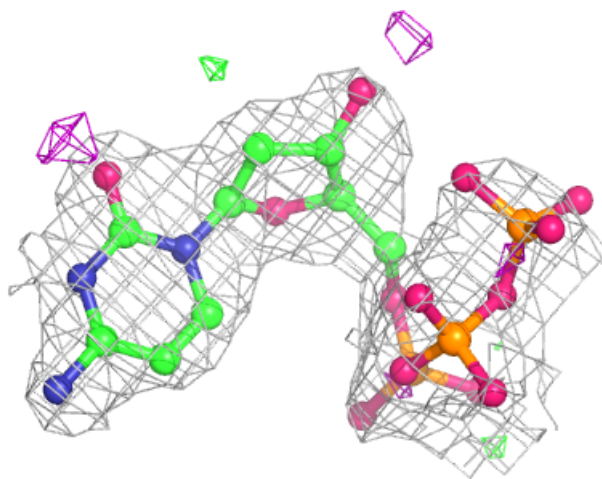
In the following table, the Atoms column lists the number of modelled atoms in the group and the number defined in the chemical component dictionary. The B-factors column lists the minimum, median, 95th percentile and maximum values of B factors of atoms in the group. The column labelled 'Q< 0.9' lists the number of atoms with occupancy less than 0.9.

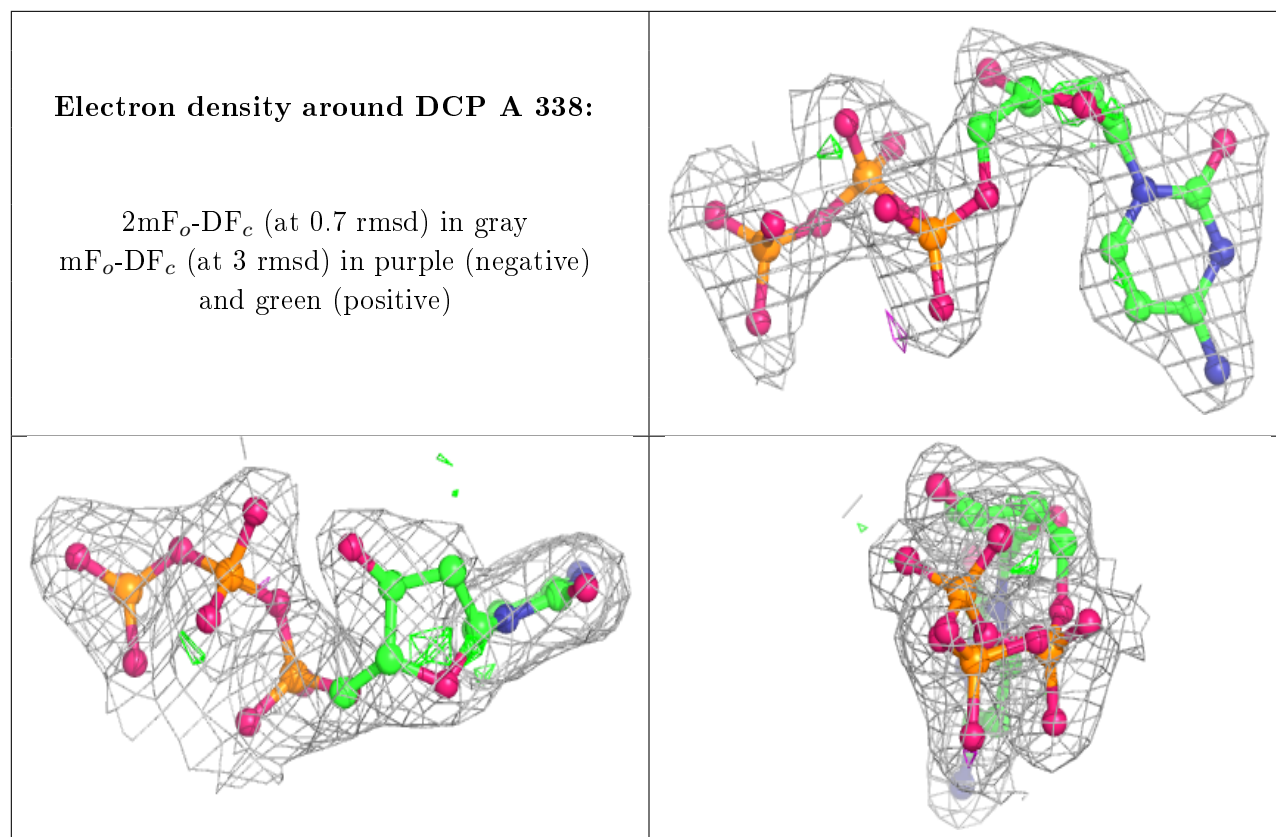
Mol	Type	Chain	Res	Atoms	RSCC	RSR	B-factors(Å ²)	Q<0.9
6	MN	A	343	1/1	0.71	0.20	92,92,92,92	0
5	DCP	A	350	28/28	0.73	0.25	36,53,78,83	0
7	NA	A	347	1/1	0.94	0.07	30,30,30,30	0
7	NA	A	346	1/1	0.94	0.08	22,22,22,22	0
6	MN	T	344	1/1	0.95	0.10	58,58,58,58	0
8	CL	A	352	1/1	0.95	0.13	42,42,42,42	0
6	MN	D	342	1/1	0.97	0.06	63,63,63,63	0
8	CL	A	353	1/1	0.97	0.18	42,42,42,42	0
6	MN	A	345	1/1	0.97	0.08	65,65,65,65	0
5	DCP	A	338	28/28	0.97	0.10	16,22,25,28	0
8	CL	A	355	1/1	0.98	0.18	43,43,43,43	0
8	CL	A	354	1/1	0.98	0.15	48,48,48,48	0
8	CL	A	351	1/1	0.98	0.04	42,42,42,42	0
6	MN	A	340	1/1	0.98	0.04	30,30,30,30	0
6	MN	A	339	1/1	0.99	0.07	22,22,22,22	0
6	MN	A	341	1/1	0.99	0.06	45,45,45,45	0

The following is a graphical depiction of the model fit to experimental electron density of all instances of the Ligand of Interest. In addition, ligands with molecular weight > 250 and outliers as shown on the geometry validation Tables will also be included. Each fit is shown from different orientation to approximate a three-dimensional view.

Electron density around DCP A 350:

$2mF_o-DF_c$ (at 0.7 rmsd) in gray
 mF_o-DF_c (at 3 rmsd) in purple (negative)
and green (positive)





6.5 Other polymers [i](#)

There are no such residues in this entry.