



# Full wwPDB X-ray Structure Validation Report ⓘ

May 26, 2020 – 09:48 am BST

PDB ID : 4RNU  
Title : G303 Circular Permutation of Old Yellow Enzyme  
Authors : Horton, J.R.; Daugherty, A.B.; Cheng, X.; Lutz, S.  
Deposited on : 2014-10-26  
Resolution : 2.68 Å(reported)

This is a Full wwPDB X-ray Structure Validation Report for a publicly released PDB entry.

We welcome your comments at [validation@mail.wwpdb.org](mailto:validation@mail.wwpdb.org)

A user guide is available at

<https://www.wwpdb.org/validation/2017/XrayValidationReportHelp>

with specific help available everywhere you see the ⓘ symbol.

---

The following versions of software and data (see [references ⓘ](#)) were used in the production of this report:

MolProbity : 4.02b-467  
Mogul : 1.8.5 (274361), CSD as541be (2020)  
Xtriage (Phenix) : 1.13  
EDS : 2.11  
buster-report : 1.1.7 (2018)  
Percentile statistics : 20191225.v01 (using entries in the PDB archive December 25th 2019)  
Refmac : 5.8.0158  
CCP4 : 7.0.044 (Gargrove)  
Ideal geometry (proteins) : Engh & Huber (2001)  
Ideal geometry (DNA, RNA) : Parkinson et al. (1996)  
Validation Pipeline (wwPDB-VP) : 2.11

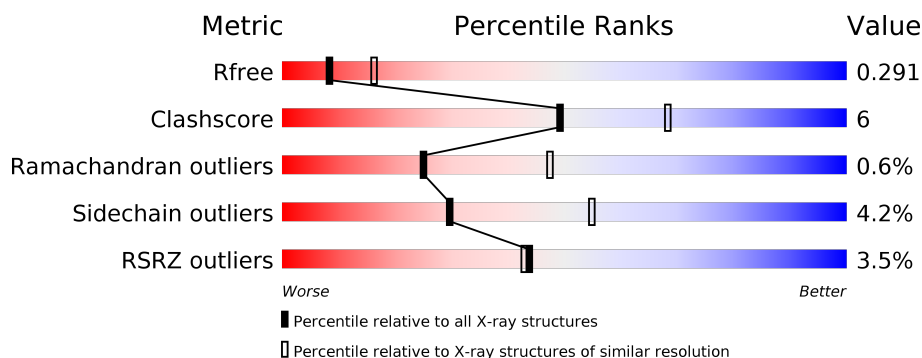
# 1 Overall quality at a glance

The following experimental techniques were used to determine the structure:

## *X-RAY DIFFRACTION*

The reported resolution of this entry is 2.68 Å.

Percentile scores (ranging between 0-100) for global validation metrics of the entry are shown in the following graphic. The table shows the number of entries on which the scores are based.



Metric	Whole archive (#Entries)	Similar resolution (#Entries, resolution range(Å))
$R_{free}$	130704	3863 (2.70-2.66)
Clashscore	141614	4210 (2.70-2.66)
Ramachandran outliers	138981	4141 (2.70-2.66)
Sidechain outliers	138945	4141 (2.70-2.66)
RSRZ outliers	127900	3780 (2.70-2.66)

The table below summarises the geometric issues observed across the polymeric chains and their fit to the electron density. The red, orange, yellow and green segments on the lower bar indicate the fraction of residues that contain outliers for  $\geq 3$ , 2, 1 and 0 types of geometric quality criteria respectively. A grey segment represents the fraction of residues that are not modelled. The numeric value for each fraction is indicated below the corresponding segment, with a dot representing fractions  $\leq 5\%$ . The upper red bar (where present) indicates the fraction of residues that have poor fit to the electron density. The numeric value is given above the bar.

Mol	Chain	Length	Quality of chain
1	A	400	<div> <div>81%</div> <div>13%</div> <div>• •</div> </div>
1	B	400	<div> <div>6%</div> <div>76%</div> <div>17%</div> <div>• 5%</div> </div>
1	C	400	<div> <div>6%</div> <div>82%</div> <div>14%</div> <div>• •</div> </div>
1	D	400	<div> <div>6%</div> <div>80%</div> <div>14%</div> <div>• 5%</div> </div>

## 2 Entry composition

There are 4 unique types of molecules in this entry. The entry contains 12147 atoms, of which 0 are hydrogens and 0 are deuteriums.

In the tables below, the ZeroOcc column contains the number of atoms modelled with zero occupancy, the AltConf column contains the number of residues with at least one atom in alternate conformation and the Trace column contains the number of residues modelled with at most 2 atoms.

- Molecule 1 is a protein called NADPH dehydrogenase 1.

Mol	Chain	Residues	Atoms					ZeroOcc	AltConf	Trace
1	A	383	Total	C	N	O	S	0	0	0
			3029	1930	530	563	6			
1	B	380	Total	C	N	O	S	0	0	0
			2967	1893	515	553	6			
1	C	385	Total	C	N	O	S	0	0	0
			2989	1896	525	562	6			
1	D	379	Total	C	N	O	S	0	0	0
			2906	1848	507	545	6			

There are 16 discrepancies between the modelled and reference sequences:

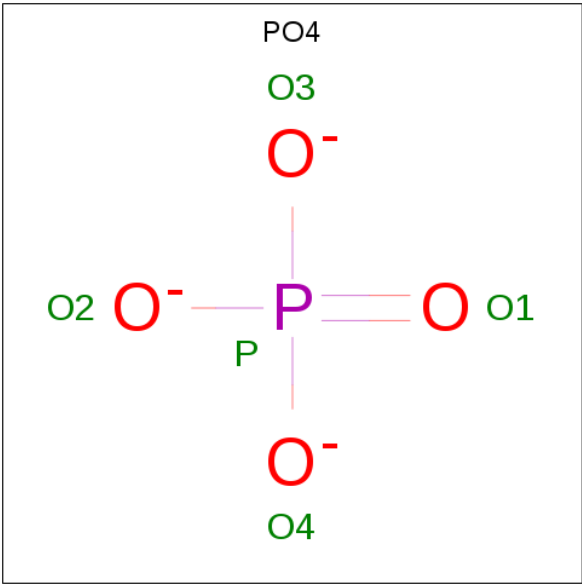
Chain	Residue	Modelled	Actual	Comment	Reference
A	1	MET	-	EXPRESSION TAG	UNP Q02899
A	97	GLY	-	LINKER	UNP Q02899
A	98	THR	-	LINKER	UNP Q02899
A	99	SER	-	LINKER	UNP Q02899
B	1	MET	-	EXPRESSION TAG	UNP Q02899
B	97	GLY	-	LINKER	UNP Q02899
B	98	THR	-	LINKER	UNP Q02899
B	99	SER	-	LINKER	UNP Q02899
C	1	MET	-	EXPRESSION TAG	UNP Q02899
C	97	GLY	-	LINKER	UNP Q02899
C	98	THR	-	LINKER	UNP Q02899
C	99	SER	-	LINKER	UNP Q02899
D	1	MET	-	EXPRESSION TAG	UNP Q02899
D	97	GLY	-	LINKER	UNP Q02899
D	98	THR	-	LINKER	UNP Q02899
D	99	SER	-	LINKER	UNP Q02899

- Molecule 2 is FLAVIN MONONUCLEOTIDE (three-letter code: FMN) (formula: C<sub>17</sub>H<sub>21</sub>N<sub>4</sub>O<sub>9</sub>P).



Mol	Chain	Residues	Atoms					ZeroOcc	AltConf
2	A	1	Total	C	N	O	P	0	0
			31	17	4	9	1		
2	B	1	Total	C	N	O	P	0	0
			31	17	4	9	1		
2	C	1	Total	C	N	O	P	0	0
			31	17	4	9	1		
2	D	1	Total	C	N	O	P	0	0
			31	17	4	9	1		

- Molecule 3 is PHOSPHATE ION (three-letter code: PO4) (formula: O<sub>4</sub>P).



Mol	Chain	Residues	Atoms	ZeroOcc	AltConf
3	A	1	Total O P 5 4 1	0	0
3	B	1	Total O P 5 4 1	0	0
3	C	1	Total O P 5 4 1	0	0
3	D	1	Total O P 5 4 1	0	0

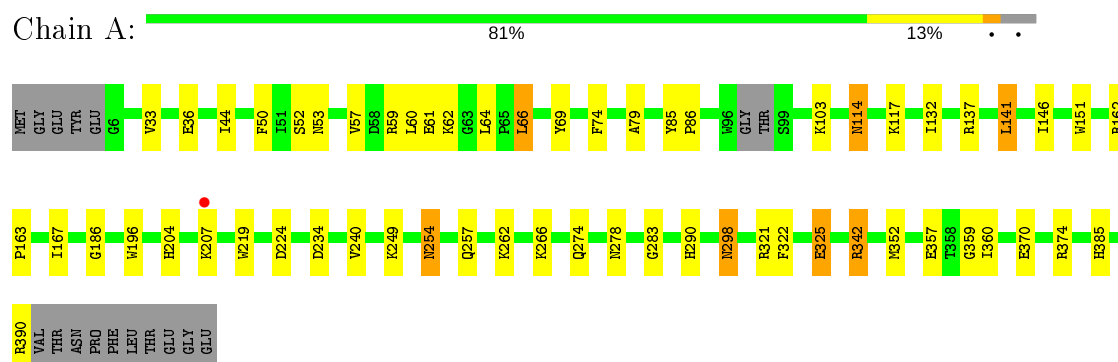
- Molecule 4 is water.

Mol	Chain	Residues	Atoms	ZeroOcc	AltConf
4	A	40	Total O 40 40	0	0
4	B	26	Total O 26 26	0	0
4	C	26	Total O 26 26	0	0
4	D	20	Total O 20 20	0	0

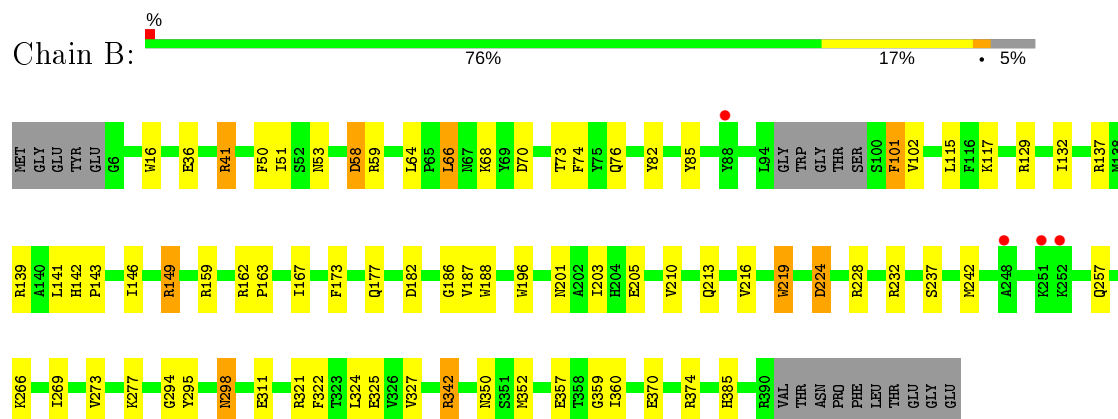
### 3 Residue-property plots

These plots are drawn for all protein, RNA and DNA chains in the entry. The first graphic for a chain summarises the proportions of the various outlier classes displayed in the second graphic. The second graphic shows the sequence view annotated by issues in geometry and electron density. Residues are color-coded according to the number of geometric quality criteria for which they contain at least one outlier: green = 0, yellow = 1, orange = 2 and red = 3 or more. A red dot above a residue indicates a poor fit to the electron density ( $RSRZ > 2$ ). Stretches of 2 or more consecutive residues without any outlier are shown as a green connector. Residues present in the sample, but not in the model, are shown in grey.

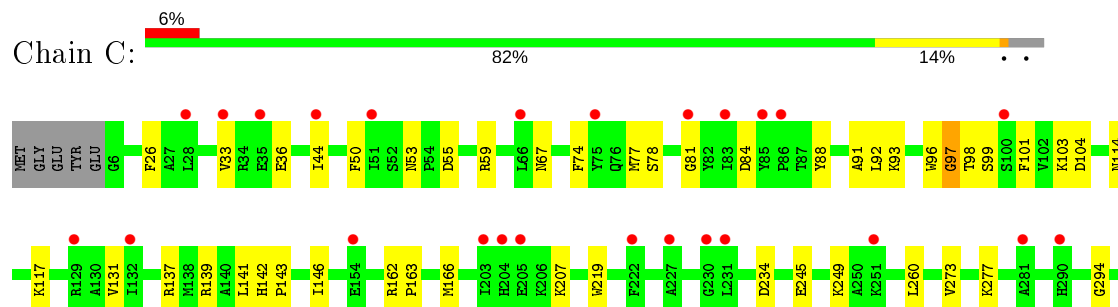
#### • Molecule 1: NADPH dehydrogenase 1



#### • Molecule 1: NADPH dehydrogenase 1

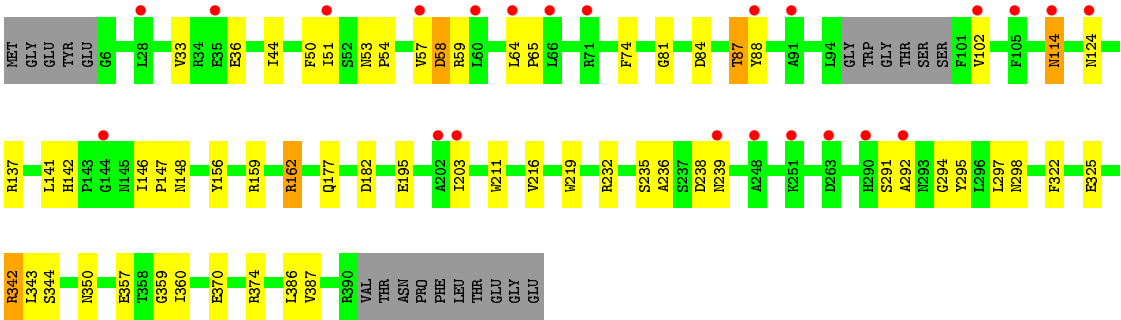
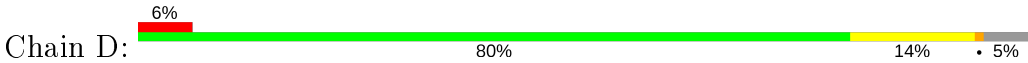


#### • Molecule 1: NADPH dehydrogenase 1





● Molecule 1: NADPH dehydrogenase 1



## 4 Data and refinement statistics

Property	Value	Source
Space group	P 1	Depositor
Cell constants a, b, c, $\alpha$ , $\beta$ , $\gamma$	45.66Å 87.64Å 113.57Å 69.32° 82.56° 90.02°	Depositor
Resolution (Å)	38.78 – 2.68 38.78 – 2.68	Depositor EDS
% Data completeness (in resolution range)	91.3 (38.78-2.68) 84.2 (38.78-2.68)	Depositor EDS
$R_{merge}$	0.11	Depositor
$R_{sym}$	(Not available)	Depositor
$\langle I/\sigma(I) \rangle$ <sup>1</sup>	1.73 (at 2.69Å)	Xtriage
Refinement program	PHENIX (phenix.refine: 1.8.2_1309)	Depositor
R, $R_{free}$	0.247 , 0.283 0.254 , 0.291	Depositor DCC
$R_{free}$ test set	1981 reflections (4.70%)	wwPDB-VP
Wilson B-factor (Å <sup>2</sup> )	47.8	Xtriage
Anisotropy	0.629	Xtriage
Bulk solvent $k_{sol}$ (e/Å <sup>3</sup> ), $B_{sol}$ (Å <sup>2</sup> )	0.26 , 41.3	EDS
L-test for twinning <sup>2</sup>	$\langle  L  \rangle = 0.47$ , $\langle L^2 \rangle = 0.30$	Xtriage
Estimated twinning fraction	0.086 for -h,k,k-l	Xtriage
$F_o, F_c$ correlation	0.91	EDS
Total number of atoms	12147	wwPDB-VP
Average B, all atoms (Å <sup>2</sup> )	81.0	wwPDB-VP

Xtriage's analysis on translational NCS is as follows: *The largest off-origin peak in the Patterson function is 8.10% of the height of the origin peak. No significant pseudotranslation is detected.*

<sup>1</sup>Intensities estimated from amplitudes.

<sup>2</sup>Theoretical values of  $\langle |L| \rangle$ ,  $\langle L^2 \rangle$  for acentric reflections are 0.5, 0.333 respectively for untwinned datasets, and 0.375, 0.2 for perfectly twinned datasets.



## 5 Model quality [i](#)

### 5.1 Standard geometry [i](#)

Bond lengths and bond angles in the following residue types are not validated in this section: FMN, PO4

The Z score for a bond length (or angle) is the number of standard deviations the observed value is removed from the expected value. A bond length (or angle) with  $|Z| > 5$  is considered an outlier worth inspection. RMSZ is the root-mean-square of all Z scores of the bond lengths (or angles).

Mol	Chain	Bond lengths		Bond angles	
		RMSZ	$\# Z  > 5$	RMSZ	$\# Z  > 5$
1	A	0.20	0/3105	0.36	0/4208
1	B	0.20	0/3043	0.36	0/4136
1	C	0.21	0/3064	0.37	0/4162
1	D	0.20	0/2978	0.36	0/4054
All	All	0.20	0/12190	0.36	0/16560

There are no bond length outliers.

There are no bond angle outliers.

There are no chirality outliers.

There are no planarity outliers.

### 5.2 Too-close contacts [i](#)

In the following table, the Non-H and H(model) columns list the number of non-hydrogen atoms and hydrogen atoms in the chain respectively. The H(added) column lists the number of hydrogen atoms added and optimized by MolProbity. The Clashes column lists the number of clashes within the asymmetric unit, whereas Symm-Clashes lists symmetry related clashes.

Mol	Chain	Non-H	H(model)	H(added)	Clashes	Symm-Clashes
1	A	3029	0	2938	31	0
1	B	2967	0	2830	43	0
1	C	2989	0	2845	28	1
1	D	2906	0	2735	35	0
2	A	31	0	19	2	0
2	B	31	0	19	3	0
2	C	31	0	19	1	0
2	D	31	0	19	1	0
3	A	5	0	0	0	0

*Continued on next page...*

*Continued from previous page...*

Mol	Chain	Non-H	H(model)	H(added)	Clashes	Symm-Clashes
3	B	5	0	0	0	0
3	C	5	0	0	0	0
3	D	5	0	0	0	0
4	A	40	0	0	0	0
4	B	26	0	0	1	1
4	C	26	0	0	0	0
4	D	20	0	0	0	0
All	All	12147	0	11424	139	1

The all-atom clashscore is defined as the number of clashes found per 1000 atoms (including hydrogen atoms). The all-atom clashscore for this structure is 6.

All (139) close contacts within the same asymmetric unit are listed below, sorted by their clash magnitude.

Atom-1	Atom-2	Interatomic distance (Å)	Clash overlap (Å)
1:B:213:GLN:HE22	2:B:501:FMN:HN3	1.32	0.77
1:B:115:LEU:HD12	1:B:129:ARG:HB2	1.71	0.72
1:D:87:THR:OG1	1:D:88:TYR:N	2.23	0.72
1:D:156:TYR:HB3	1:D:203:ILE:HD11	1.76	0.68
1:A:132:ILE:HD12	1:A:167:ILE:HG12	1.74	0.68
1:C:33:VAL:HG23	1:C:44:ILE:HG13	1.76	0.67
1:D:51:ILE:HD12	1:D:159:ARG:HH21	1.61	0.66
1:B:16:TRP:O	1:B:41:ARG:NH2	2.29	0.66
1:A:298:ASN:ND2	1:A:352:MET:SD	2.70	0.65
1:B:53:ASN:OD1	1:B:59:ARG:NH1	2.32	0.62
1:A:114:ASN:HB3	1:A:117:LYS:HE2	1.82	0.62
1:C:97:GLY:O	1:C:99:SER:N	2.32	0.61
1:C:342:ARG:NH1	2:C:501:FMN:O2	2.34	0.61
1:B:298:ASN:ND2	1:B:352:MET:SD	2.75	0.59
1:D:53:ASN:OD1	1:D:59:ARG:NH1	2.36	0.58
1:D:294:GLY:HA3	1:D:350:ASN:HB2	1.86	0.58
1:C:53:ASN:OD1	1:C:59:ARG:NH1	2.37	0.58
1:C:114:ASN:HA	1:C:117:LYS:HD3	1.87	0.57
1:A:162:ARG:HD3	1:A:163:PRO:HD2	1.87	0.57
1:D:342:ARG:NH1	2:D:501:FMN:O2	2.37	0.57
1:B:70:ASP:OD1	1:B:70:ASP:N	2.37	0.56
1:A:59:ARG:HA	1:A:64:LEU:HB2	1.87	0.56
1:B:141:LEU:N	1:B:146:ILE:O	2.37	0.56
1:A:342:ARG:NH1	2:A:501:FMN:O2	2.38	0.56
1:C:77:MET:HA	1:C:139:ARG:HG2	1.88	0.55
1:B:182:ASP:OD1	1:B:228:ARG:NH2	2.39	0.55

*Continued on next page...*

*Continued from previous page...*

Atom-1	Atom-2	Interatomic distance (Å)	Clash overlap (Å)
1:D:147:PRO:HG2	1:D:195:GLU:HB2	1.89	0.54
1:A:370:GLU:HB3	1:A:374:ARG:HH12	1.73	0.54
1:B:73:THR:O	1:B:139:ARG:NH2	2.36	0.54
1:A:234:ASP:OD1	1:A:234:ASP:N	2.40	0.54
1:D:57:VAL:HB	1:D:162:ARG:HG3	1.90	0.54
1:B:237:SER:O	1:B:257:GLN:NE2	2.34	0.53
1:B:342:ARG:NH1	2:B:501:FMN:O2	2.41	0.53
1:B:311:GLU:O	1:B:321:ARG:NH1	2.41	0.53
1:D:357:GLU:HG3	1:D:359:GLY:H	1.73	0.53
1:B:224:ASP:N	1:B:224:ASP:OD1	2.29	0.53
1:C:67:ASN:HA	1:C:101:PHE:HA	1.89	0.53
1:C:294:GLY:HA3	1:C:350:ASN:HB2	1.91	0.53
1:B:203:ILE:HD13	1:B:210:VAL:HB	1.92	0.52
1:B:76:GLN:O	1:B:139:ARG:NE	2.27	0.51
1:A:61:GLU:OE1	1:A:162:ARG:NH2	2.39	0.51
1:A:224:ASP:OD2	1:A:249:LYS:NZ	2.37	0.51
1:B:59:ARG:HA	1:B:64:LEU:HB2	1.93	0.51
1:B:186:GLY:O	1:B:196:TRP:NE1	2.43	0.51
1:A:53:ASN:OD1	1:A:59:ARG:NH1	2.43	0.51
1:D:74:PHE:HA	1:D:137:ARG:HH12	1.74	0.51
1:D:344:SER:HA	1:D:387:VAL:HG22	1.93	0.51
1:B:149:ARG:NH2	4:B:621:HOH:O	2.37	0.51
1:C:273:VAL:HG12	1:C:277:LYS:HE2	1.93	0.51
1:C:78:SER:O	1:C:139:ARG:NE	2.41	0.50
1:A:62:LYS:HB2	1:A:64:LEU:HD13	1.92	0.50
1:D:114:ASN:N	1:D:114:ASN:OD1	2.45	0.50
1:C:131:VAL:HG12	1:C:166:MET:HB3	1.93	0.50
1:D:58:ASP:OD1	1:D:58:ASP:N	2.44	0.49
1:B:51:ILE:O	1:B:159:ARG:NH2	2.40	0.49
1:B:370:GLU:HB3	1:B:374:ARG:NH1	2.27	0.49
1:A:357:GLU:HB3	1:A:360:ILE:HG12	1.95	0.49
1:A:370:GLU:HB3	1:A:374:ARG:NH1	2.27	0.49
1:B:273:VAL:HG12	1:B:277:LYS:HE2	1.95	0.49
1:B:370:GLU:HB3	1:B:374:ARG:HH12	1.77	0.49
1:A:163:PRO:HB3	1:A:207:LYS:HE2	1.95	0.49
1:D:33:VAL:HG13	1:D:44:ILE:HG13	1.95	0.48
1:D:357:GLU:HB3	1:D:360:ILE:HG12	1.95	0.48
1:D:59:ARG:NH2	1:D:65:PRO:O	2.43	0.48
1:D:54:PRO:HA	1:D:159:ARG:HG3	1.95	0.48
1:B:324:LEU:HA	1:B:327:VAL:HG12	1.95	0.48
1:C:342:ARG:HA	1:C:385:HIS:HB3	1.94	0.48

*Continued on next page...*

*Continued from previous page...*

Atom-1	Atom-2	Interatomic distance (Å)	Clash overlap (Å)
1:A:141:LEU:N	1:A:146:ILE:O	2.37	0.47
1:A:240:VAL:O	1:A:257:GLN:NE2	2.45	0.47
1:B:59:ARG:HH11	1:B:66:LEU:HA	1.80	0.47
1:C:370:GLU:HB3	1:C:374:ARG:NH1	2.30	0.47
1:C:91:ALA:O	1:C:93:LYS:N	2.47	0.47
1:D:51:ILE:O	1:D:159:ARG:NH2	2.47	0.47
1:A:59:ARG:HH11	1:A:66:LEU:HA	1.79	0.46
1:C:59:ARG:HE	1:C:88:TYR:HB2	1.81	0.46
1:B:68:LYS:N	1:B:101:PHE:O	2.48	0.46
1:B:357:GLU:HB3	1:B:360:ILE:HG12	1.97	0.46
1:B:219:TRP:CE2	1:B:242:MET:HG3	2.51	0.46
1:C:234:ASP:N	1:C:234:ASP:OD1	2.47	0.46
1:B:357:GLU:HG3	1:B:359:GLY:H	1.81	0.46
1:D:370:GLU:HB3	1:D:374:ARG:NH1	2.31	0.46
1:C:141:LEU:N	1:C:146:ILE:O	2.49	0.46
1:D:137:ARG:HA	1:D:137:ARG:HH11	1.82	0.45
1:C:78:SER:H	1:C:139:ARG:HE	1.63	0.45
1:B:201:ASN:O	1:B:205:GLU:HG2	2.17	0.45
1:C:74:PHE:O	1:C:137:ARG:NH1	2.50	0.45
1:C:55:ASP:OD2	1:C:88:TYR:N	2.48	0.44
1:A:33:VAL:HG13	1:A:44:ILE:HG13	1.99	0.44
1:A:114:ASN:N	1:A:114:ASN:OD1	2.50	0.44
1:C:77:MET:HG2	1:C:139:ARG:HA	1.99	0.44
1:D:235:SER:OG	1:D:236:ALA:N	2.50	0.44
1:D:59:ARG:HA	1:D:64:LEU:HD13	2.00	0.44
1:A:262:LYS:O	1:A:266:LYS:HG2	2.18	0.44
1:B:132:ILE:HD12	1:B:167:ILE:HG12	1.98	0.44
1:B:266:LYS:HD2	1:B:269:ILE:HD12	2.00	0.44
1:B:342:ARG:HA	1:B:385:HIS:HB3	2.00	0.44
1:D:216:VAL:O	1:D:295:TYR:HB3	2.18	0.44
1:D:343:LEU:HB2	1:D:386:LEU:HD23	1.99	0.44
1:A:52:SER:HB2	1:A:69:TYR:HB3	1.99	0.43
1:B:117:LYS:O	1:B:129:ARG:NH1	2.48	0.43
1:A:357:GLU:HG3	1:A:359:GLY:H	1.83	0.43
1:B:173:PHE:HB2	1:B:188:TRP:HZ3	1.84	0.43
1:C:260:LEU:O	1:C:308:ARG:NH1	2.38	0.43
1:A:74:PHE:O	1:A:137:ARG:NH1	2.51	0.43
1:D:177:GLN:NE2	1:D:232:ARG:O	2.49	0.43
1:A:79:ALA:HB2	1:A:151:TRP:CE2	2.54	0.43
1:B:294:GLY:HA3	1:B:350:ASN:HB2	2.00	0.43
1:C:245:GLU:O	1:C:249:LYS:HG2	2.18	0.43

*Continued on next page...*

*Continued from previous page...*

Atom-1	Atom-2	Interatomic distance (Å)	Clash overlap (Å)
1:C:26:PHE:CZ	1:C:388:GLU:HG3	2.54	0.43
1:D:142:HIS:ND1	1:D:182:ASP:HB3	2.34	0.43
1:D:141:LEU:HD13	1:D:148:ASN:HA	1.99	0.43
1:B:162:ARG:HA	1:B:163:PRO:HD3	1.93	0.43
1:D:292:ALA:HB1	1:D:344:SER:OG	2.19	0.43
1:A:274:GLN:OE1	1:A:278:ASN:ND2	2.48	0.42
1:B:74:PHE:O	1:B:137:ARG:NH1	2.52	0.42
1:B:101:PHE:HB3	1:B:102:VAL:H	1.50	0.42
1:C:142:HIS:CD2	1:C:143:PRO:HA	2.55	0.42
1:C:162:ARG:HD3	1:C:163:PRO:HD2	2.01	0.42
1:B:142:HIS:CD2	1:B:143:PRO:HA	2.55	0.42
1:C:81:GLY:N	1:C:84:ASP:OD1	2.51	0.42
1:D:141:LEU:N	1:D:146:ILE:O	2.38	0.42
1:D:291:SER:HA	1:D:297:LEU:HB2	2.01	0.42
2:B:501:FMN:H1'2	2:B:501:FMN:H4'	1.89	0.41
1:A:254:ASN:O	1:A:254:ASN:ND2	2.47	0.41
1:A:204:HIS:NE2	1:A:283:GLY:O	2.47	0.41
1:B:70:ASP:OD1	1:B:85:TYR:OH	2.38	0.41
1:D:81:GLY:N	1:D:84:ASP:OD1	2.53	0.41
2:A:501:FMN:H4'	2:A:501:FMN:H1'2	1.83	0.41
1:B:216:VAL:O	1:B:295:TYR:HB3	2.20	0.41
1:A:85:TYR:HA	1:A:86:PRO:HD3	1.89	0.41
1:B:177:GLN:NE2	1:B:232:ARG:O	2.51	0.41
1:A:186:GLY:O	1:A:196:TRP:NE1	2.46	0.41
1:C:163:PRO:HB3	1:C:207:LYS:HE2	2.02	0.41
1:D:51:ILE:HD13	1:D:137:ARG:HE	1.85	0.41
1:D:74:PHE:O	1:D:137:ARG:NH1	2.54	0.41
1:D:124:ASN:ND2	1:D:211:TRP:HE1	2.18	0.40
1:B:58:ASP:OD1	1:B:58:ASP:N	2.55	0.40
1:A:321:ARG:O	1:A:325:GLU:HB2	2.21	0.40
1:D:238:ASP:OD1	1:D:239:ASN:N	2.53	0.40

All (1) symmetry-related close contacts are listed below. The label for Atom-2 includes the symmetry operator and encoded unit-cell translations to be applied.

Atom-1	Atom-2	Interatomic distance (Å)	Clash overlap (Å)
1:C:307:THR:O	4:B:615:HOH:O[1_655]	2.19	0.01

## 5.3 Torsion angles

### 5.3.1 Protein backbone

In the following table, the Percentiles column shows the percent Ramachandran outliers of the chain as a percentile score with respect to all X-ray entries followed by that with respect to entries of similar resolution.

The Analysed column shows the number of residues for which the backbone conformation was analysed, and the total number of residues.

Mol	Chain	Analysed	Favoured	Allowed	Outliers	Percentiles	
1	A	379/400 (95%)	369 (97%)	9 (2%)	1 (0%)	41	64
1	B	376/400 (94%)	360 (96%)	15 (4%)	1 (0%)	41	64
1	C	383/400 (96%)	363 (95%)	14 (4%)	6 (2%)	9	22
1	D	375/400 (94%)	351 (94%)	23 (6%)	1 (0%)	41	64
All	All	1513/1600 (95%)	1443 (95%)	61 (4%)	9 (1%)	25	47

All (9) Ramachandran outliers are listed below:

Mol	Chain	Res	Type
1	C	97	GLY
1	B	187	VAL
1	C	92	LEU
1	C	98	THR
1	C	103	LYS
1	C	104	ASP
1	A	103	LYS
1	C	96	TRP
1	D	102	VAL

### 5.3.2 Protein sidechains

In the following table, the Percentiles column shows the percent sidechain outliers of the chain as a percentile score with respect to all X-ray entries followed by that with respect to entries of similar resolution.

The Analysed column shows the number of residues for which the sidechain conformation was analysed, and the total number of residues.

Mol	Chain	Analysed	Rotameric	Outliers	Percentiles	
1	A	310/328 (94%)	294 (95%)	16 (5%)	23	46
1	B	298/328 (91%)	284 (95%)	14 (5%)	26	50

*Continued on next page...*

*Continued from previous page...*

Mol	Chain	Analysed	Rotameric	Outliers	Percentiles	
1	C	299/328 (91%)	290 (97%)	9 (3%)	41	68
1	D	285/328 (87%)	274 (96%)	11 (4%)	32	58
All	All	1192/1312 (91%)	1142 (96%)	50 (4%)	30	55

All (50) residues with a non-rotameric sidechain are listed below:

Mol	Chain	Res	Type
1	A	36	GLU
1	A	50	PHE
1	A	57	VAL
1	A	60	LEU
1	A	66	LEU
1	A	114	ASN
1	A	141	LEU
1	A	219	TRP
1	A	254	ASN
1	A	290	HIS
1	A	298	ASN
1	A	322	PHE
1	A	325	GLU
1	A	342	ARG
1	A	385	HIS
1	A	390	ARG
1	B	36	GLU
1	B	41	ARG
1	B	50	PHE
1	B	58	ASP
1	B	66	LEU
1	B	82	TYR
1	B	101	PHE
1	B	149	ARG
1	B	219	TRP
1	B	224	ASP
1	B	298	ASN
1	B	322	PHE
1	B	325	GLU
1	B	342	ARG
1	C	36	GLU
1	C	50	PHE
1	C	219	TRP
1	C	298	ASN

*Continued on next page...*

*Continued from previous page...*

Mol	Chain	Res	Type
1	C	301	LEU
1	C	322	PHE
1	C	325	GLU
1	C	342	ARG
1	C	349	PHE
1	D	36	GLU
1	D	50	PHE
1	D	58	ASP
1	D	87	THR
1	D	114	ASN
1	D	162	ARG
1	D	219	TRP
1	D	298	ASN
1	D	322	PHE
1	D	325	GLU
1	D	342	ARG

Some sidechains can be flipped to improve hydrogen bonding and reduce clashes. All (4) such sidechains are listed below:

Mol	Chain	Res	Type
1	A	258	HIS
1	B	76	GLN
1	B	213	GLN
1	C	114	ASN

### 5.3.3 RNA ⓘ

There are no RNA molecules in this entry.

## 5.4 Non-standard residues in protein, DNA, RNA chains ⓘ

There are no non-standard protein/DNA/RNA residues in this entry.

## 5.5 Carbohydrates ⓘ

There are no carbohydrates in this entry.



## 5.6 Ligand geometry

8 ligands are modelled in this entry.

In the following table, the Counts columns list the number of bonds (or angles) for which Mogul statistics could be retrieved, the number of bonds (or angles) that are observed in the model and the number of bonds (or angles) that are defined in the Chemical Component Dictionary. The Link column lists molecule types, if any, to which the group is linked. The Z score for a bond length (or angle) is the number of standard deviations the observed value is removed from the expected value. A bond length (or angle) with  $|Z| > 2$  is considered an outlier worth inspection. RMSZ is the root-mean-square of all Z scores of the bond lengths (or angles).

Mol	Type	Chain	Res	Link	Bond lengths			Bond angles		
					Counts	RMSZ	# Z  > 2	Counts	RMSZ	# Z  > 2
3	PO4	B	502	-	4,4,4	0.93	0	6,6,6	0.42	0
3	PO4	C	502	-	4,4,4	0.91	0	6,6,6	0.42	0
3	PO4	D	502	-	4,4,4	0.92	0	6,6,6	0.42	0
2	FMN	C	501	-	31,33,33	1.40	4 (12%)	40,50,50	1.48	5 (12%)
2	FMN	A	501	-	31,33,33	1.40	4 (12%)	40,50,50	1.50	5 (12%)
2	FMN	D	501	-	31,33,33	1.41	4 (12%)	40,50,50	1.49	5 (12%)
2	FMN	B	501	-	31,33,33	1.40	4 (12%)	40,50,50	1.51	5 (12%)
3	PO4	A	502	-	4,4,4	0.93	0	6,6,6	0.42	0

In the following table, the Chirals column lists the number of chiral outliers, the number of chiral centers analysed, the number of these observed in the model and the number defined in the Chemical Component Dictionary. Similar counts are reported in the Torsion and Rings columns. '-' means no outliers of that kind were identified.

Mol	Type	Chain	Res	Link	Chirals	Torsions	Rings
2	FMN	D	501	-	-	0/18/18/18	0/3/3/3
2	FMN	B	501	-	-	0/18/18/18	0/3/3/3
2	FMN	C	501	-	-	0/18/18/18	0/3/3/3
2	FMN	A	501	-	-	2/18/18/18	0/3/3/3

All (16) bond length outliers are listed below:

Mol	Chain	Res	Type	Atoms	Z	Observed(Å)	Ideal(Å)
2	A	501	FMN	C10-N1	4.08	1.38	1.33
2	D	501	FMN	C10-N1	4.07	1.38	1.33
2	C	501	FMN	C10-N1	4.05	1.38	1.33
2	B	501	FMN	C10-N1	4.02	1.38	1.33
2	D	501	FMN	C4A-N5	3.60	1.38	1.33
2	C	501	FMN	C4A-N5	3.52	1.38	1.33
2	B	501	FMN	C4A-N5	3.50	1.38	1.33

*Continued on next page...*

*Continued from previous page...*

Mol	Chain	Res	Type	Atoms	Z	Observed(Å)	Ideal(Å)
2	A	501	FMN	C4A-N5	3.50	1.38	1.33
2	D	501	FMN	C4-N3	3.08	1.38	1.33
2	A	501	FMN	C4-N3	3.05	1.38	1.33
2	C	501	FMN	C4-N3	3.01	1.38	1.33
2	B	501	FMN	C4-N3	3.01	1.38	1.33
2	A	501	FMN	C1'-N10	2.35	1.50	1.48
2	B	501	FMN	C1'-N10	2.33	1.50	1.48
2	C	501	FMN	C1'-N10	2.30	1.50	1.48
2	D	501	FMN	C1'-N10	2.27	1.50	1.48

All (20) bond angle outliers are listed below:

Mol	Chain	Res	Type	Atoms	Z	Observed(°)	Ideal(°)
2	B	501	FMN	C4-N3-C2	5.96	120.17	115.14
2	D	501	FMN	C4-N3-C2	5.87	120.10	115.14
2	A	501	FMN	C4-N3-C2	5.81	120.05	115.14
2	C	501	FMN	C4-N3-C2	5.75	120.00	115.14
2	A	501	FMN	C4A-N5-C5A	3.25	120.02	116.77
2	D	501	FMN	C4A-N5-C5A	3.23	120.00	116.77
2	C	501	FMN	C5A-C9A-N10	3.22	120.05	117.72
2	C	501	FMN	C4A-N5-C5A	3.21	119.98	116.77
2	B	501	FMN	C4A-N5-C5A	3.19	119.96	116.77
2	A	501	FMN	C5A-C9A-N10	3.11	119.97	117.72
2	B	501	FMN	C5A-C9A-N10	3.06	119.93	117.72
2	D	501	FMN	C5A-C9A-N10	3.05	119.93	117.72
2	B	501	FMN	C1'-N10-C9A	2.96	120.62	118.29
2	D	501	FMN	C1'-N10-C9A	2.77	120.48	118.29
2	A	501	FMN	C1'-N10-C9A	2.77	120.47	118.29
2	B	501	FMN	C4A-C4-N3	-2.69	119.75	123.43
2	C	501	FMN	C1'-N10-C9A	2.59	120.33	118.29
2	A	501	FMN	C4A-C4-N3	-2.59	119.89	123.43
2	D	501	FMN	C4A-C4-N3	-2.55	119.94	123.43
2	C	501	FMN	C4A-C4-N3	-2.52	119.99	123.43

There are no chirality outliers.

All (2) torsion outliers are listed below:

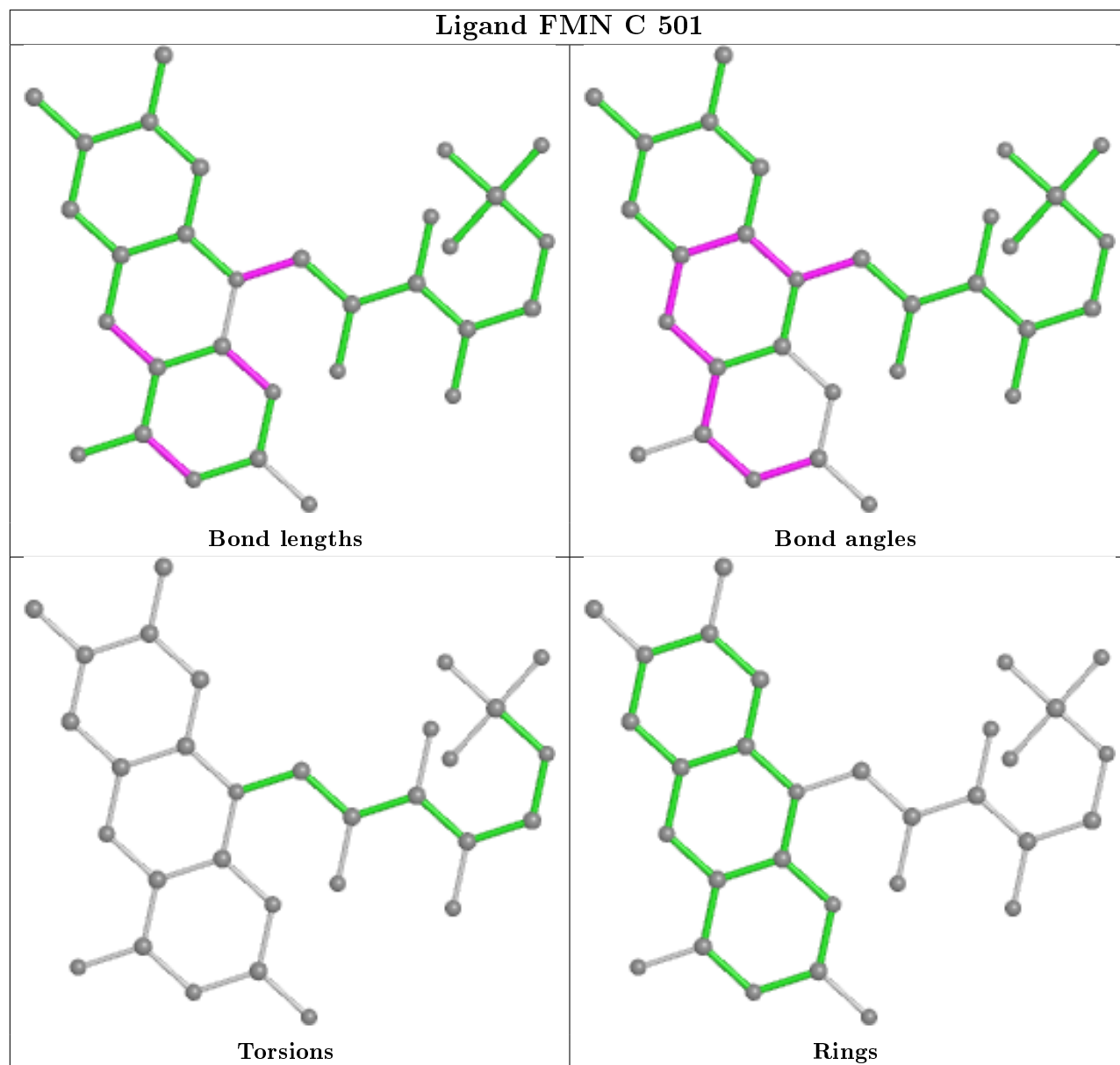
Mol	Chain	Res	Type	Atoms
2	A	501	FMN	C5'-O5'-P-O2P
2	A	501	FMN	C5'-O5'-P-O3P

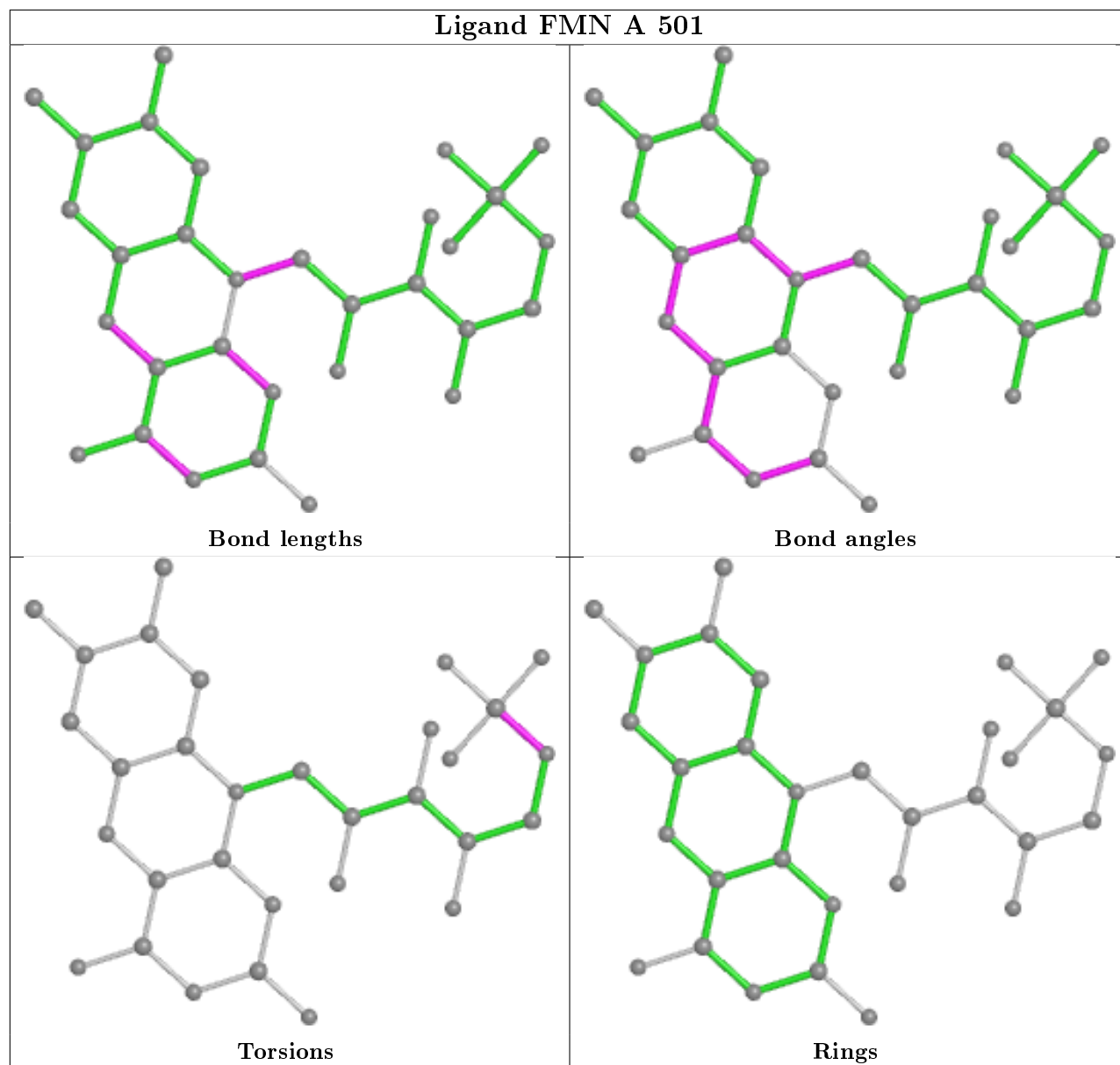
There are no ring outliers.

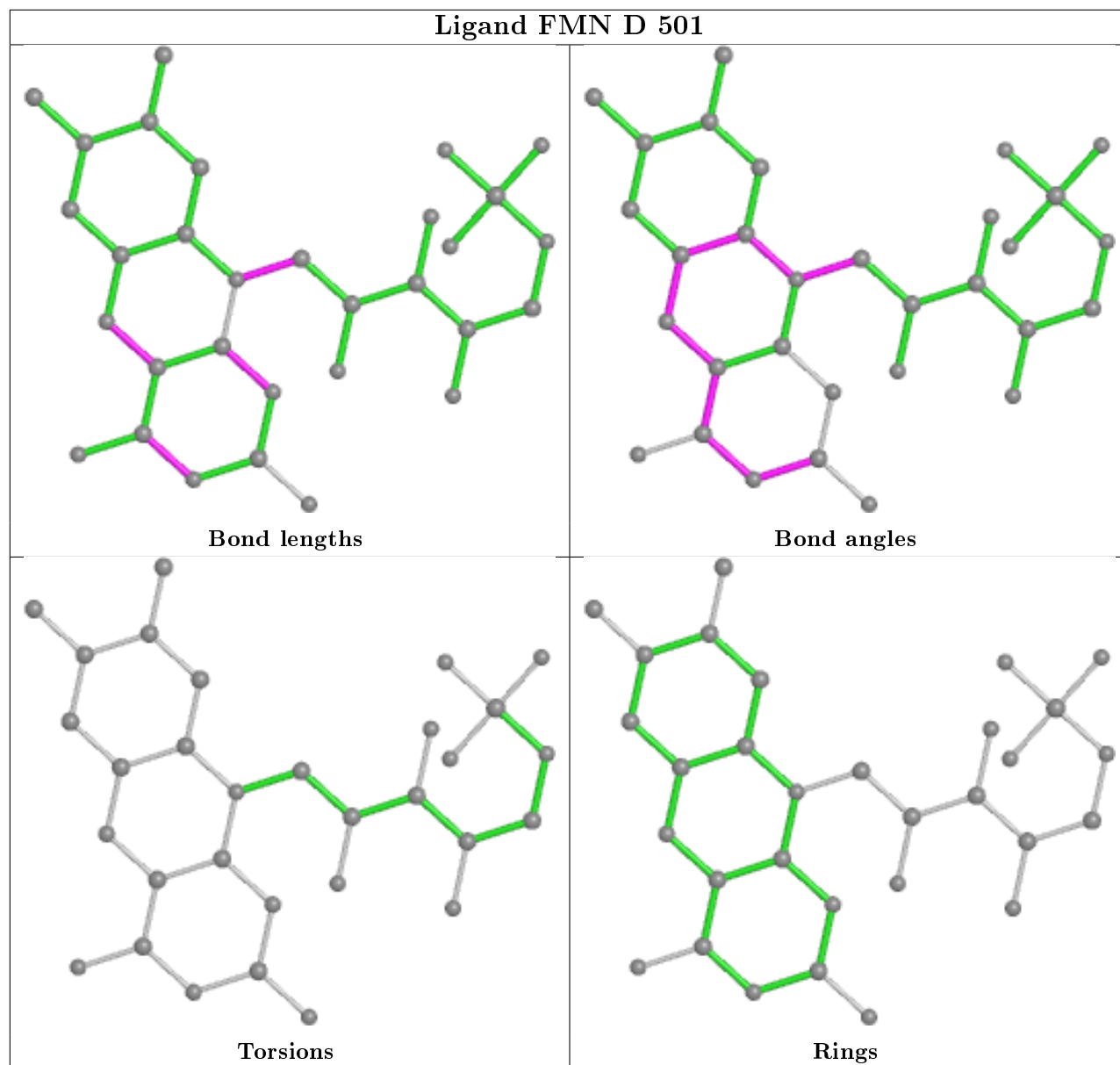
4 monomers are involved in 7 short contacts:

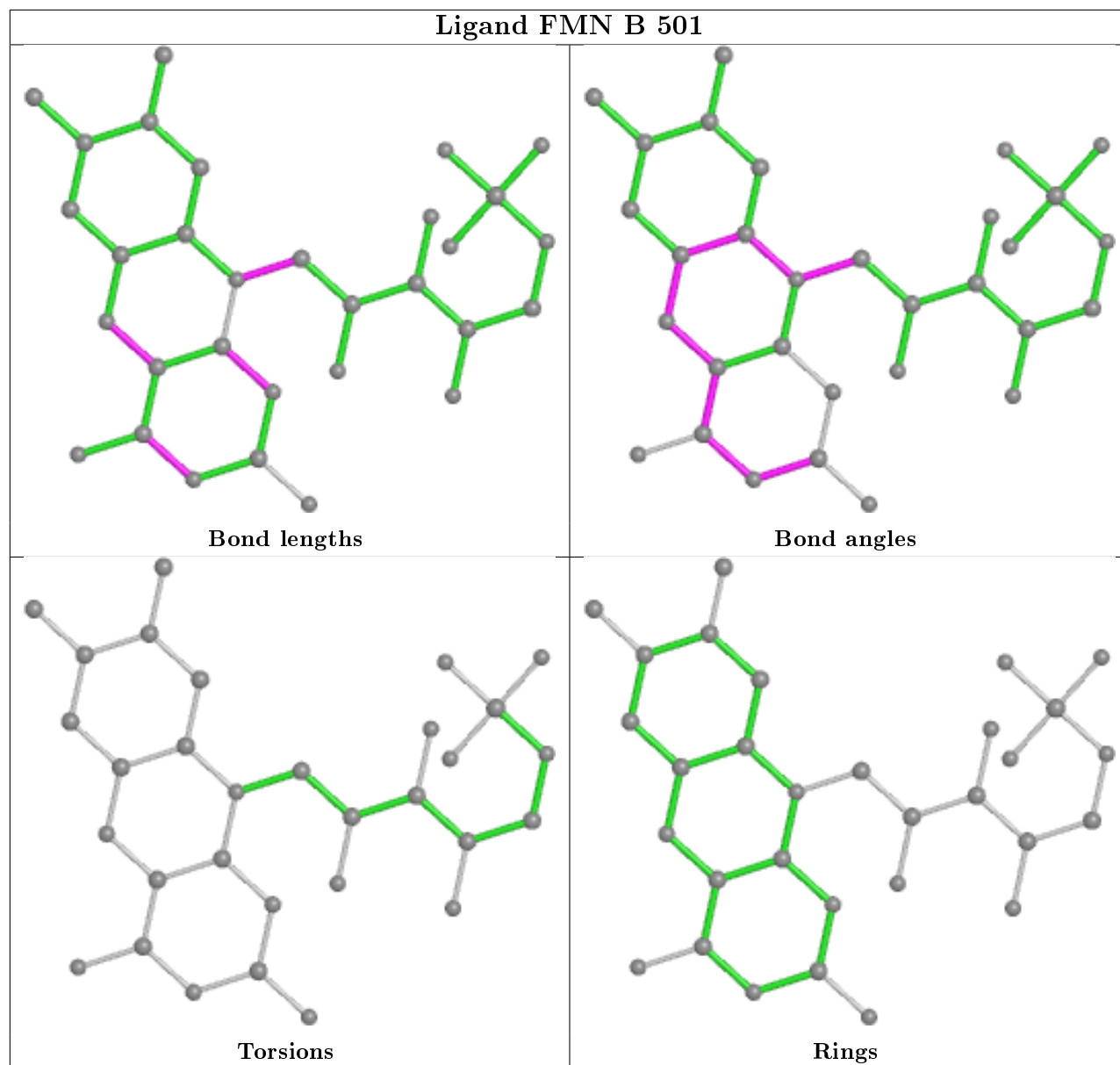
Mol	Chain	Res	Type	Clashes	Symm-Clashes
2	C	501	FMN	1	0
2	A	501	FMN	2	0
2	D	501	FMN	1	0
2	B	501	FMN	3	0

The following is a two-dimensional graphical depiction of Mogul quality analysis of bond lengths, bond angles, torsion angles, and ring geometry for all instances of the Ligand of Interest. In addition, ligands with molecular weight > 250 and outliers as shown on the validation Tables will also be included. For torsion angles, if less than 5% of the Mogul distribution of torsion angles is within 10 degrees of the torsion angle in question, then that torsion angle is considered an outlier. Any bond that is central to one or more torsion angles identified as an outlier by Mogul will be highlighted in the graph. For rings, the root-mean-square deviation (RMSD) between the ring in question and similar rings identified by Mogul is calculated over all ring torsion angles. If the average RMSD is greater than 60 degrees and the minimal RMSD between the ring in question and any Mogul-identified rings is also greater than 60 degrees, then that ring is considered an outlier. The outliers are highlighted in purple. The color gray indicates Mogul did not find sufficient equivalents in the CSD to analyse the geometry.









## 5.7 Other polymers [i](#)

There are no such residues in this entry.

## 5.8 Polymer linkage issues [i](#)

There are no chain breaks in this entry.

## 6 Fit of model and data ⓘ

### 6.1 Protein, DNA and RNA chains ⓘ

In the following table, the column labelled ‘#RSRZ> 2’ contains the number (and percentage) of RSRZ outliers, followed by percent RSRZ outliers for the chain as percentile scores relative to all X-ray entries and entries of similar resolution. The OWAB column contains the minimum, median, 95<sup>th</sup> percentile and maximum values of the occupancy-weighted average B-factor per residue. The column labelled ‘Q< 0.9’ lists the number of (and percentage) of residues with an average occupancy less than 0.9.

Mol	Chain	Analysed	<RSRZ>	#RSRZ>2	OWAB(Å <sup>2</sup> )	Q<0.9
1	A	383/400 (95%)	-0.03	1 (0%) 94 95	36, 69, 106, 134	0
1	B	380/400 (95%)	0.04	4 (1%) 80 81	32, 71, 111, 161	0
1	C	385/400 (96%)	0.30	25 (6%) 18 16	37, 88, 128, 149	0
1	D	379/400 (94%)	0.36	23 (6%) 21 19	34, 89, 138, 173	0
All	All	1527/1600 (95%)	0.17	53 (3%) 44 43	32, 78, 126, 173	0

All (53) RSRZ outliers are listed below:

Mol	Chain	Res	Type	RSRZ
1	D	60	LEU	6.2
1	D	66	LEU	3.8
1	D	57	VAL	3.7
1	D	102	VAL	3.6
1	C	154	GLU	3.5
1	D	144	GLY	3.4
1	D	248	ALA	3.3
1	C	83	ILE	3.1
1	B	88	TYR	3.0
1	D	202	ALA	3.0
1	D	64	LEU	3.0
1	C	227	ALA	2.8
1	C	75	TYR	2.8
1	C	86	PRO	2.7
1	D	91	ALA	2.7
1	D	263	ASP	2.7
1	D	28	LEU	2.7
1	C	28	LEU	2.6
1	D	124	ASN	2.6
1	B	251	LYS	2.6
1	D	88	TYR	2.5

*Continued on next page...*



*Continued from previous page...*

Mol	Chain	Res	Type	RSRZ
1	C	85	TYR	2.5
1	C	231	LEU	2.5
1	D	35	GLU	2.5
1	C	281	ALA	2.5
1	C	51	ILE	2.4
1	D	251	LYS	2.4
1	A	207	LYS	2.4
1	C	222	PHE	2.4
1	C	132	ILE	2.4
1	C	230	GLY	2.4
1	D	114	ASN	2.4
1	B	248	ALA	2.4
1	C	205	GLU	2.4
1	C	290	HIS	2.3
1	C	66	LEU	2.3
1	B	252	LYS	2.3
1	C	100	SER	2.3
1	C	44	ILE	2.3
1	C	81	GLY	2.3
1	C	251	LYS	2.3
1	D	51	ILE	2.3
1	C	129	ARG	2.2
1	D	71	ARG	2.2
1	C	204	HIS	2.2
1	C	35	GLU	2.2
1	C	203	ILE	2.2
1	D	105	PHE	2.2
1	C	33	VAL	2.1
1	D	203	ILE	2.0
1	D	292	ALA	2.0
1	D	239	ASN	2.0
1	D	290	HIS	2.0

## 6.2 Non-standard residues in protein, DNA, RNA chains [i](#)

There are no non-standard protein/DNA/RNA residues in this entry.

## 6.3 Carbohydrates [i](#)

There are no carbohydrates in this entry.

## 6.4 Ligands

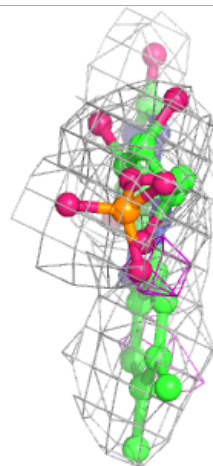
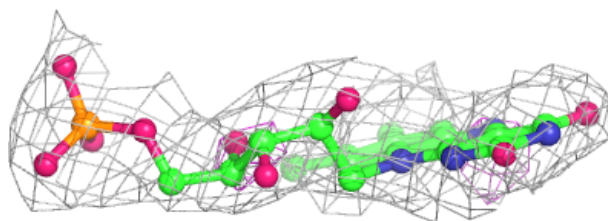
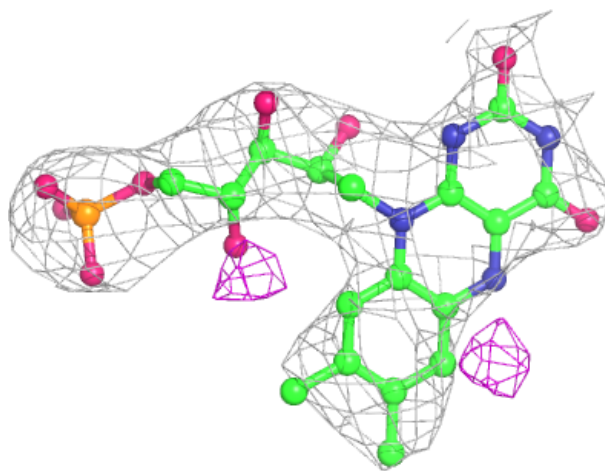
In the following table, the Atoms column lists the number of modelled atoms in the group and the number defined in the chemical component dictionary. The B-factors column lists the minimum, median, 95<sup>th</sup> percentile and maximum values of B factors of atoms in the group. The column labelled 'Q< 0.9' lists the number of atoms with occupancy less than 0.9.

Mol	Type	Chain	Res	Atoms	RSCC	RSR	B-factors(Å <sup>2</sup> )	Q<0.9
2	FMN	D	501	31/31	0.86	0.23	64,83,89,92	0
2	FMN	C	501	31/31	0.90	0.23	74,86,96,98	0
3	PO4	B	502	5/5	0.90	0.21	89,91,91,92	0
2	FMN	A	501	31/31	0.91	0.21	66,74,83,89	0
3	PO4	D	502	5/5	0.92	0.27	101,102,105,105	0
2	FMN	B	501	31/31	0.92	0.23	61,72,81,82	0
3	PO4	A	502	5/5	0.94	0.15	76,77,82,83	0
3	PO4	C	502	5/5	0.95	0.23	95,97,100,100	0

The following is a graphical depiction of the model fit to experimental electron density of all instances of the Ligand of Interest. In addition, ligands with molecular weight > 250 and outliers as shown on the geometry validation Tables will also be included. Each fit is shown from different orientation to approximate a three-dimensional view.

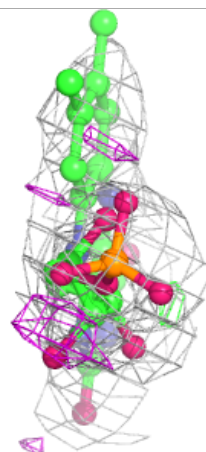
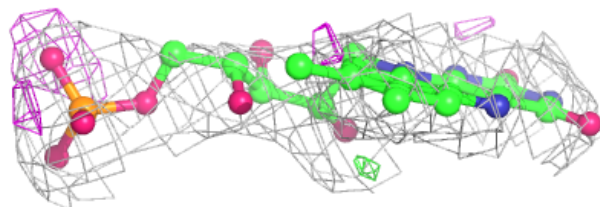
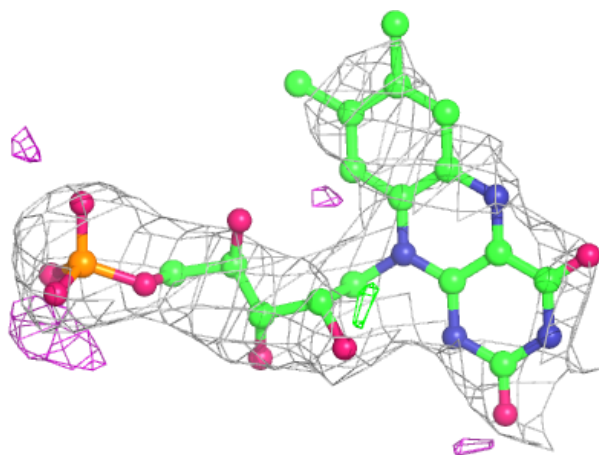
**Electron density around FMN D 501:**

$2mF_o-DF_c$  (at 0.7 rmsd) in gray  
 $mF_o-DF_c$  (at 3 rmsd) in purple (negative)  
and green (positive)



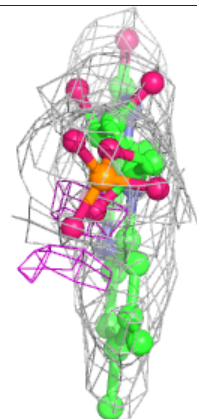
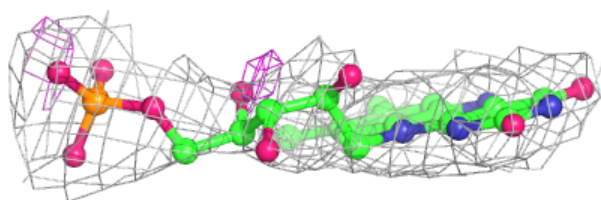
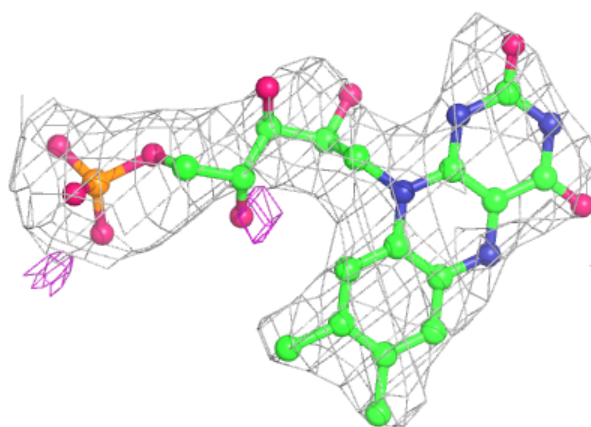
**Electron density around FMN C 501:**

$2mF_o-DF_c$  (at 0.7 rmsd) in gray  
 $mF_o-DF_c$  (at 3 rmsd) in purple (negative)  
and green (positive)



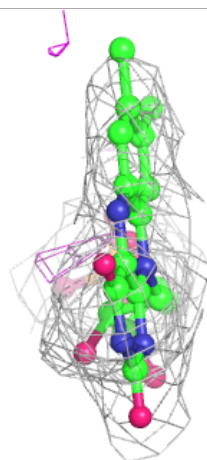
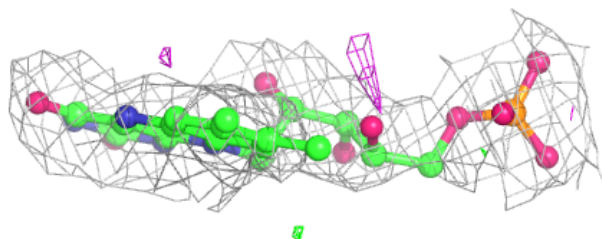
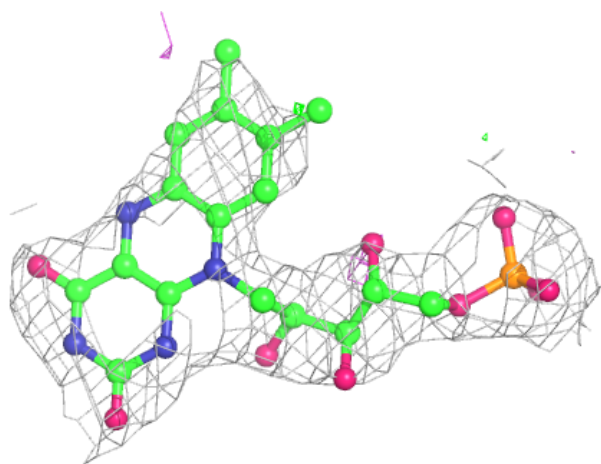
**Electron density around FMN A 501:**

$2mF_o-DF_c$  (at 0.7 rmsd) in gray  
 $mF_o-DF_c$  (at 3 rmsd) in purple (negative)  
and green (positive)



**Electron density around FMN B 501:**

$2mF_o-DF_c$  (at 0.7 rmsd) in gray  
 $mF_o-DF_c$  (at 3 rmsd) in purple (negative)  
and green (positive)



## 6.5 Other polymers [i](#)

There are no such residues in this entry.