



# Full wwPDB X-ray Structure Validation Report ⓘ

May 21, 2020 – 06:46 pm BST

PDB ID : 4RPY  
Title : Human DNA Polymerase Beta With Gapped DNA Containing an 8-oxo-7,8-dihydro-Guanine(8-oxoG) and dCTP soaked with MgCl<sub>2</sub> for 30 s  
Authors : Vyas, R.; Suo, Z.  
Deposited on : 2014-10-31  
Resolution : 1.90 Å(reported)

This is a Full wwPDB X-ray Structure Validation Report for a publicly released PDB entry.

We welcome your comments at [validation@mail.wwpdb.org](mailto:validation@mail.wwpdb.org)

A user guide is available at

<https://www.wwpdb.org/validation/2017/XrayValidationReportHelp>

with specific help available everywhere you see the ⓘ symbol.

---

The following versions of software and data (see [references ⓘ](#)) were used in the production of this report:

MolProbity : 4.02b-467  
Mogul : 1.8.5 (274361), CSD as541be (2020)  
Xtriage (Phenix) : 1.13  
EDS : 2.11  
buster-report : 1.1.7 (2018)  
Percentile statistics : 20191225.v01 (using entries in the PDB archive December 25th 2019)  
Refmac : 5.8.0158  
CCP4 : 7.0.044 (Gargrove)  
Ideal geometry (proteins) : Engh & Huber (2001)  
Ideal geometry (DNA, RNA) : Parkinson et al. (1996)  
Validation Pipeline (wwPDB-VP) : 2.11

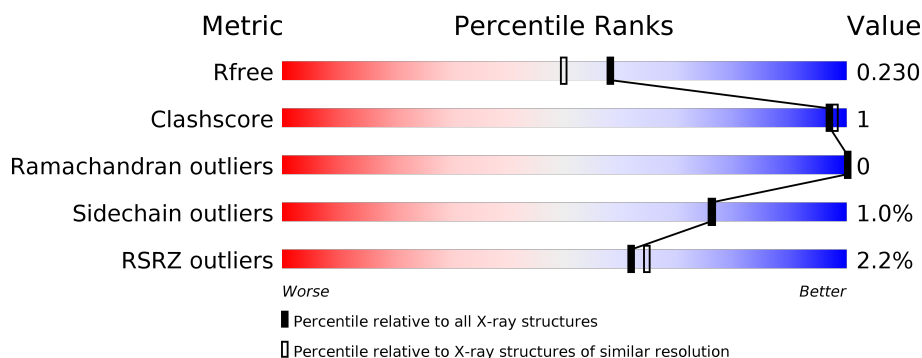
# 1 Overall quality at a glance

The following experimental techniques were used to determine the structure:

*X-RAY DIFFRACTION*

The reported resolution of this entry is 1.90 Å.

Percentile scores (ranging between 0-100) for global validation metrics of the entry are shown in the following graphic. The table shows the number of entries on which the scores are based.



Metric	Whole archive (#Entries)	Similar resolution (#Entries, resolution range(Å))
$R_{free}$	130704	6207 (1.90-1.90)
Clashscore	141614	6847 (1.90-1.90)
Ramachandran outliers	138981	6760 (1.90-1.90)
Sidechain outliers	138945	6760 (1.90-1.90)
RSRZ outliers	127900	6082 (1.90-1.90)

The table below summarises the geometric issues observed across the polymeric chains and their fit to the electron density. The red, orange, yellow and green segments on the lower bar indicate the fraction of residues that contain outliers for  $\geq 3$ , 2, 1 and 0 types of geometric quality criteria respectively. A grey segment represents the fraction of residues that are not modelled. The numeric value for each fraction is indicated below the corresponding segment, with a dot representing fractions  $\leq 5\%$ . The upper red bar (where present) indicates the fraction of residues that have poor fit to the electron density. The numeric value is given above the bar.

Mol	Chain	Length	Quality of chain
1	A	343	<div> <div>2%</div> <div> <div></div> <div>94%</div> <div>5%</div> </div> </div>
2	D	5	<div> <div>80%</div> <div>20%</div> </div>
3	P	11	<div> <div>55%</div> <div>45%</div> </div>
4	T	16	<div> <div>75%</div> <div>25%</div> </div>

## 2 Entry composition

There are 11 unique types of molecules in this entry. The entry contains 3679 atoms, of which 0 are hydrogens and 0 are deuteriums.

In the tables below, the ZeroOcc column contains the number of atoms modelled with zero occupancy, the AltConf column contains the number of residues with at least one atom in alternate conformation and the Trace column contains the number of residues modelled with at most 2 atoms.

- Molecule 1 is a protein called DNA polymerase beta.

Mol	Chain	Residues	Atoms					ZeroOcc	AltConf	Trace
1	A	326	Total	C	N	O	S	0	4	0
			2635	1666	462	498	9			

There are 8 discrepancies between the modelled and reference sequences:

Chain	Residue	Modelled	Actual	Comment	Reference
A	-1	MET	-	EXPRESSION TAG	UNP P06746
A	0	GLY	-	EXPRESSION TAG	UNP P06746
A	336	HIS	-	EXPRESSION TAG	UNP P06746
A	337	HIS	-	EXPRESSION TAG	UNP P06746
A	338	HIS	-	EXPRESSION TAG	UNP P06746
A	339	HIS	-	EXPRESSION TAG	UNP P06746
A	340	HIS	-	EXPRESSION TAG	UNP P06746
A	341	HIS	-	EXPRESSION TAG	UNP P06746

- Molecule 2 is a DNA chain called DNA (5'-D(P\*GP\*TP\*CP\*GP\*G)-3').

Mol	Chain	Residues	Atoms					ZeroOcc	AltConf	Trace
2	D	5	Total	C	N	O	P	0	0	0
			106	49	20	32	5			

- Molecule 3 is a DNA chain called DNA (5'-D(\*GP\*CP\*TP\*GP\*AP\*TP\*GP\*CP\*GP\*CP\*C)-3').

Mol	Chain	Residues	Atoms					ZeroOcc	AltConf	Trace
3	P	11	Total	C	N	O	P	0	2	0
			241	115	44	71	11			

- Molecule 4 is a DNA chain called DNA (5'-D(\*CP\*CP\*GP\*AP\*CP\*(8OG)P\*GP\*CP\*GP\*CP\*AP\*TP\*CP\*AP\*GP\*C)-3').

Mol	Chain	Residues	Atoms					ZeroOcc	AltConf	Trace
4	T	16	Total	C	N	O	P	0	0	0
			324	153	63	93	15			

- Molecule 5 is MAGNESIUM ION (three-letter code: MG) (formula: Mg).

Mol	Chain	Residues	Atoms		ZeroOcc	AltConf
5	P	1	Total	Mg	0	0
			1	1		
5	A	2	Total	Mg	0	0
			2	2		

- Molecule 6 is SODIUM ION (three-letter code: NA) (formula: Na).

Mol	Chain	Residues	Atoms		ZeroOcc	AltConf
6	T	1	Total	Na	0	0
			1	1		
6	A	5	Total	Na	0	0
			5	5		
6	D	1	Total	Na	0	0
			1	1		

- Molecule 7 is CHLORIDE ION (three-letter code: CL) (formula: Cl).

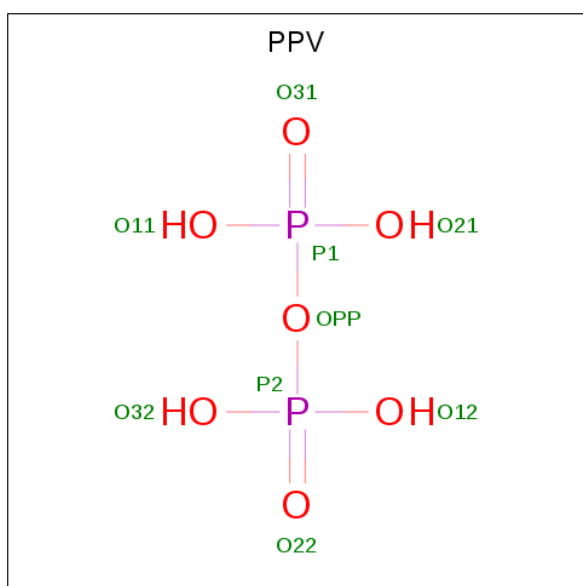
Mol	Chain	Residues	Atoms		ZeroOcc	AltConf
7	A	4	Total	Cl	0	0
			4	4		

- Molecule 8 is ACETATE ION (three-letter code: ACT) (formula: C<sub>2</sub>H<sub>3</sub>O<sub>2</sub>).



Mol	Chain	Residues	Atoms			ZeroOcc	AltConf
8	A	1	Total	C	O	0	0
			4	2	2		
8	T	1	Total	C	O	0	0
			4	2	2		

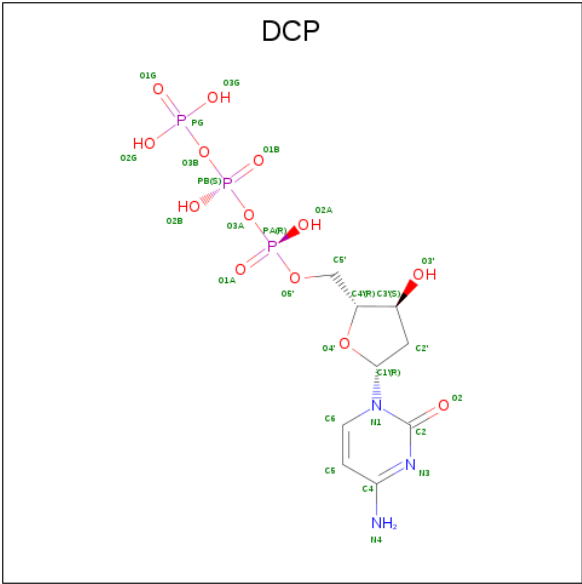
- Molecule 9 is PYROPHOSPHATE (three-letter code: PPV) (formula:  $\text{H}_4\text{O}_7\text{P}_2$ ).



Mol	Chain	Residues	Atoms			ZeroOcc	AltConf
9	A	1	Total	O	P	0	1
			9	7	2		

- Molecule 10 is 2'-DEOXYCYTIDINE-5'-TRIPHOSPHATE (three-letter code: DCP)

(formula: C<sub>9</sub>H<sub>16</sub>N<sub>3</sub>O<sub>13</sub>P<sub>3</sub>).



Mol	Chain	Residues	Atoms					ZeroOcc	AltConf
10	A	1	Total	C	N	O	P	0	1
			28	9	3	13	3		
10	T	1	Total	C	N	O	P	0	0
			28	9	3	13	3		

- Molecule 11 is water.

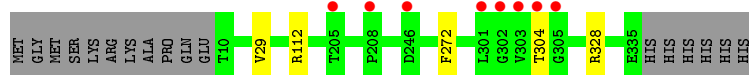
Mol	Chain	Residues	Atoms		ZeroOcc	AltConf
11	A	205	Total	O	0	0
			205	205		
11	D	18	Total	O	0	0
			18	18		
11	P	21	Total	O	0	0
			21	21		
11	T	42	Total	O	0	0
			42	42		

### 3 Residue-property plots [i](#)

These plots are drawn for all protein, RNA and DNA chains in the entry. The first graphic for a chain summarises the proportions of the various outlier classes displayed in the second graphic. The second graphic shows the sequence view annotated by issues in geometry and electron density. Residues are color-coded according to the number of geometric quality criteria for which they contain at least one outlier: green = 0, yellow = 1, orange = 2 and red = 3 or more. A red dot above a residue indicates a poor fit to the electron density ( $RSRZ > 2$ ). Stretches of 2 or more consecutive residues without any outlier are shown as a green connector. Residues present in the sample, but not in the model, are shown in grey.

- Molecule 1: DNA polymerase beta

Chain A: 



- Molecule 2: DNA (5'-D(P\*GP\*TP\*CP\*GP\*G)-3')

Chain D: 



- Molecule 3: DNA (5'-D(\*GP\*CP\*TP\*GP\*AP\*TP\*GP\*CP\*GP\*CP\*C)-3')

Chain P: 



- Molecule 4: DNA (5'-D(\*CP\*CP\*GP\*AP\*CP\*(8OG)P\*GP\*CP\*GP\*CP\*AP\*TP\*CP\*AP\*GP\*C)-3')

Chain T: 



## 4 Data and refinement statistics

Property	Value	Source
Space group	P 1 21 1	Depositor
Cell constants a, b, c, $\alpha$ , $\beta$ , $\gamma$	49.44Å 79.53Å 55.52Å 90.00° 106.61° 90.00°	Depositor
Resolution (Å)	31.23 – 1.90 30.46 – 1.90	Depositor EDS
% Data completeness (in resolution range)	99.7 (31.23-1.90) 99.7 (30.46-1.90)	Depositor EDS
$R_{merge}$	0.09	Depositor
$R_{sym}$	(Not available)	Depositor
$\langle I/\sigma(I) \rangle$ <sup>1</sup>	2.12 (at 1.91Å)	Xtriage
Refinement program	REFMAC 5.8.0073	Depositor
R, $R_{free}$	0.190 , 0.230 0.197 , 0.230	Depositor DCC
$R_{free}$ test set	1564 reflections (4.83%)	wwPDB-VP
Wilson B-factor (Å <sup>2</sup> )	20.3	Xtriage
Anisotropy	0.365	Xtriage
Bulk solvent $k_{sol}$ (e/Å <sup>3</sup> ), $B_{sol}$ (Å <sup>2</sup> )	0.39 , 47.1	EDS
L-test for twinning <sup>2</sup>	$\langle  L  \rangle = 0.49$ , $\langle L^2 \rangle = 0.32$	Xtriage
Estimated twinning fraction	No twinning to report.	Xtriage
$F_o, F_c$ correlation	0.95	EDS
Total number of atoms	3679	wwPDB-VP
Average B, all atoms (Å <sup>2</sup> )	22.0	wwPDB-VP

Xtriage's analysis on translational NCS is as follows: *The largest off-origin peak in the Patterson function is 5.90% of the height of the origin peak. No significant pseudotranslation is detected.*

<sup>1</sup>Intensities estimated from amplitudes.

<sup>2</sup>Theoretical values of  $\langle |L| \rangle$ ,  $\langle L^2 \rangle$  for acentric reflections are 0.5, 0.333 respectively for untwinned datasets, and 0.375, 0.2 for perfectly twinned datasets.



## 5 Model quality [i](#)

### 5.1 Standard geometry [i](#)

Bond lengths and bond angles in the following residue types are not validated in this section: MG, CL, NA, 8OG, PPV, ACT, DCP

The Z score for a bond length (or angle) is the number of standard deviations the observed value is removed from the expected value. A bond length (or angle) with  $|Z| > 5$  is considered an outlier worth inspection. RMSZ is the root-mean-square of all Z scores of the bond lengths (or angles).

Mol	Chain	Bond lengths		Bond angles	
		RMSZ	$\# Z  > 5$	RMSZ	$\# Z  > 5$
1	A	0.38	0/2696	0.59	0/3623
2	D	0.99	1/118 (0.8%)	0.80	0/179
3	P	0.34	0/269	0.76	1/413 (0.2%)
4	T	0.31	0/336	0.82	0/513
All	All	0.41	1/3419 (0.0%)	0.64	1/4728 (0.0%)

All (1) bond length outliers are listed below:

Mol	Chain	Res	Type	Atoms	Z	Observed(Å)	Ideal(Å)
2	D	1	DG	OP3-P	-10.00	1.49	1.61

All (1) bond angle outliers are listed below:

Mol	Chain	Res	Type	Atoms	Z	Observed(°)	Ideal(°)
3	P	1	DG	C5'-C4'-O4'	5.05	118.90	109.30

There are no chirality outliers.

There are no planarity outliers.

### 5.2 Too-close contacts [i](#)

In the following table, the Non-H and H(model) columns list the number of non-hydrogen atoms and hydrogen atoms in the chain respectively. The H(added) column lists the number of hydrogen atoms added and optimized by MolProbity. The Clashes column lists the number of clashes within the asymmetric unit, whereas Symm-Clashes lists symmetry related clashes.

Mol	Chain	Non-H	H(model)	H(added)	Clashes	Symm-Clashes
1	A	2635	0	2667	1	0
2	D	106	0	57	0	0

*Continued on next page...*

*Continued from previous page...*

Mol	Chain	Non-H	H(model)	H(added)	Clashes	Symm-Clashes
3	P	241	0	136	2	0
4	T	324	0	179	3	0
5	A	2	0	0	0	0
5	P	1	0	0	0	0
6	A	5	0	0	0	0
6	D	1	0	0	0	0
6	T	1	0	0	0	0
7	A	4	0	0	0	0
8	A	4	0	3	0	0
8	T	4	0	3	0	0
9	A	9	0	0	0	0
10	A	28	0	10	0	0
10	T	28	0	12	1	0
11	A	205	0	0	0	0
11	D	18	0	0	0	0
11	P	21	0	0	0	0
11	T	42	0	0	0	0
All	All	3679	0	3067	6	0

The all-atom clashscore is defined as the number of clashes found per 1000 atoms (including hydrogen atoms). The all-atom clashscore for this structure is 1.

All (6) close contacts within the same asymmetric unit are listed below, sorted by their clash magnitude.

Atom-1	Atom-2	Interatomic distance (Å)	Clash overlap (Å)
1:A:29:VAL:O	1:A:112[A]:ARG:NH2	2.32	0.62
4:T:2:DC:H5''	10:T:101:DCP:O3'	2.02	0.60
4:T:2:DC:H2''	4:T:3:DG:C8	2.44	0.52
3:P:10[A]:DC:H2'	3:P:11[A]:DC:C6	2.47	0.50
4:T:5:DC:H4'	4:T:6:8OG:OP2	2.19	0.43
3:P:8:DC:H2'	3:P:9:DG:O4'	2.21	0.41

There are no symmetry-related clashes.

## 5.3 Torsion angles

### 5.3.1 Protein backbone

In the following table, the Percentiles column shows the percent Ramachandran outliers of the chain as a percentile score with respect to all X-ray entries followed by that with respect to entries of similar resolution.

The Analysed column shows the number of residues for which the backbone conformation was analysed, and the total number of residues.

Mol	Chain	Analysed	Favoured	Allowed	Outliers	Percentiles	
1	A	328/343 (96%)	323 (98%)	5 (2%)	0	100	100

There are no Ramachandran outliers to report.

### 5.3.2 Protein sidechains ⓘ

In the following table, the Percentiles column shows the percent sidechain outliers of the chain as a percentile score with respect to all X-ray entries followed by that with respect to entries of similar resolution.

The Analysed column shows the number of residues for which the sidechain conformation was analysed, and the total number of residues.

Mol	Chain	Analysed	Rotameric	Outliers	Percentiles	
1	A	291/302 (96%)	288 (99%)	3 (1%)	76	76

All (3) residues with a non-rotameric sidechain are listed below:

Mol	Chain	Res	Type
1	A	272	PHE
1	A	304	THR
1	A	328	ARG

Some sidechains can be flipped to improve hydrogen bonding and reduce clashes. All (1) such sidechains are listed below:

Mol	Chain	Res	Type
1	A	90	GLN

### 5.3.3 RNA ⓘ

There are no RNA molecules in this entry.

## 5.4 Non-standard residues in protein, DNA, RNA chains ⓘ

1 non-standard protein/DNA/RNA residue is modelled in this entry.

In the following table, the Counts columns list the number of bonds (or angles) for which Mogul statistics could be retrieved, the number of bonds (or angles) that are observed in the model and

the number of bonds (or angles) that are defined in the Chemical Component Dictionary. The Link column lists molecule types, if any, to which the group is linked. The Z score for a bond length (or angle) is the number of standard deviations the observed value is removed from the expected value. A bond length (or angle) with  $|Z| > 2$  is considered an outlier worth inspection. RMSZ is the root-mean-square of all Z scores of the bond lengths (or angles).

Mol	Type	Chain	Res	Link	Bond lengths			Bond angles		
					Counts	RMSZ	# Z  > 2	Counts	RMSZ	# Z  > 2
4	8OG	T	6	3,4	18,25,26	1.22	2 (11%)	21,37,40	2.53	8 (38%)

In the following table, the Chirals column lists the number of chiral outliers, the number of chiral centers analysed, the number of these observed in the model and the number defined in the Chemical Component Dictionary. Similar counts are reported in the Torsion and Rings columns. '-' means no outliers of that kind were identified.

Mol	Type	Chain	Res	Link	Chirals	Torsions	Rings
4	8OG	T	6	3,4	-	1/3/21/22	0/3/3/3

All (2) bond length outliers are listed below:

Mol	Chain	Res	Type	Atoms	Z	Observed(Å)	Ideal(Å)
4	T	6	8OG	C6-C5	3.87	1.48	1.41
4	T	6	8OG	C5-C4	2.45	1.47	1.40

All (8) bond angle outliers are listed below:

Mol	Chain	Res	Type	Atoms	Z	Observed(°)	Ideal(°)
4	T	6	8OG	C6-C5-C4	-5.39	115.66	120.80
4	T	6	8OG	C2-N3-C4	4.85	120.90	115.36
4	T	6	8OG	C6-N1-C2	4.15	122.53	115.93
4	T	6	8OG	N3-C2-N1	-3.99	121.91	127.22
4	T	6	8OG	C2'-C1'-N9	3.62	119.96	116.01
4	T	6	8OG	C8-N9-C1'	3.35	131.67	125.90
4	T	6	8OG	C5-C6-N1	-3.28	118.95	123.43
4	T	6	8OG	C1'-N9-C4	-2.33	122.65	126.99

There are no chirality outliers.

All (1) torsion outliers are listed below:

Mol	Chain	Res	Type	Atoms
4	T	6	8OG	O4'-C4'-C5'-O5'

There are no ring outliers.

1 monomer is involved in 1 short contact:

Mol	Chain	Res	Type	Clashes	Symm-Clashes
4	T	6	8OG	1	0

## 5.5 Carbohydrates

There are no carbohydrates in this entry.

## 5.6 Ligand geometry

Of 19 ligands modelled in this entry, 14 are monoatomic - leaving 5 for Mogul analysis.

In the following table, the Counts columns list the number of bonds (or angles) for which Mogul statistics could be retrieved, the number of bonds (or angles) that are observed in the model and the number of bonds (or angles) that are defined in the Chemical Component Dictionary. The Link column lists molecule types, if any, to which the group is linked. The Z score for a bond length (or angle) is the number of standard deviations the observed value is removed from the expected value. A bond length (or angle) with  $|Z| > 2$  is considered an outlier worth inspection. RMSZ is the root-mean-square of all Z scores of the bond lengths (or angles).

Mol	Type	Chain	Res	Link	Bond lengths			Bond angles		
					Counts	RMSZ	$\# Z  > 2$	Counts	RMSZ	$\# Z  > 2$
9	PPV	A	413[A]	5	6,8,8	0.61	0	13,13,13	1.61	2 (15%)
8	ACT	T	103	-	1,3,3	1.60	0	0,3,3	0.00	-
10	DCP	A	414[B]	5	23,29,29	0.62	0	30,45,45	1.42	4 (13%)
8	ACT	A	412	-	1,3,3	1.41	0	0,3,3	0.00	-
10	DCP	T	101	6	23,29,29	0.60	0	30,45,45	1.44	5 (16%)

In the following table, the Chirals column lists the number of chiral outliers, the number of chiral centers analysed, the number of these observed in the model and the number defined in the Chemical Component Dictionary. Similar counts are reported in the Torsion and Rings columns. '-' means no outliers of that kind were identified.

Mol	Type	Chain	Res	Link	Chirals	Torsions	Rings
10	DCP	A	414[B]	5	-	4/19/34/34	0/2/2/2
9	PPV	A	413[A]	5	-	2/6/6/6	-
10	DCP	T	101	6	-	4/19/34/34	0/2/2/2

There are no bond length outliers.

All (11) bond angle outliers are listed below:

Mol	Chain	Res	Type	Atoms	Z	Observed(°)	Ideal(°)
10	T	101	DCP	C2-N3-C4	4.23	120.63	116.34
9	A	413[A]	PPV	P2-OPP-P1	-4.19	118.44	132.83
10	A	414[B]	DCP	C2-N3-C4	3.75	120.14	116.34
10	T	101	DCP	PB-O3A-PA	-3.54	120.66	132.83
10	A	414[B]	DCP	C2'-C1'-N1	-3.46	106.29	114.27
10	A	414[B]	DCP	PB-O3B-PG	-2.25	125.11	132.83
9	A	413[A]	PPV	O21-P1-O11	2.23	116.16	107.64
10	T	101	DCP	N4-C4-N3	2.20	119.96	116.49
10	T	101	DCP	O3G-PG-O2G	2.19	116.01	107.64
10	A	414[B]	DCP	O5'-PA-O1A	-2.14	100.71	109.07
10	T	101	DCP	PB-O3B-PG	-2.08	125.67	132.83

There are no chirality outliers.

All (10) torsion outliers are listed below:

Mol	Chain	Res	Type	Atoms
10	A	414[B]	DCP	PB-O3B-PG-O3G
9	A	413[A]	PPV	P1-OPP-P2-O12
10	T	101	DCP	O4'-C1'-N1-C6
10	T	101	DCP	O4'-C4'-C5'-O5'
9	A	413[A]	PPV	P1-OPP-P2-O22
10	T	101	DCP	C3'-C4'-C5'-O5'
10	A	414[B]	DCP	PA-O3A-PB-O2B
10	A	414[B]	DCP	PB-O3B-PG-O2G
10	T	101	DCP	C5'-O5'-PA-O1A
10	A	414[B]	DCP	PB-O3B-PG-O1G

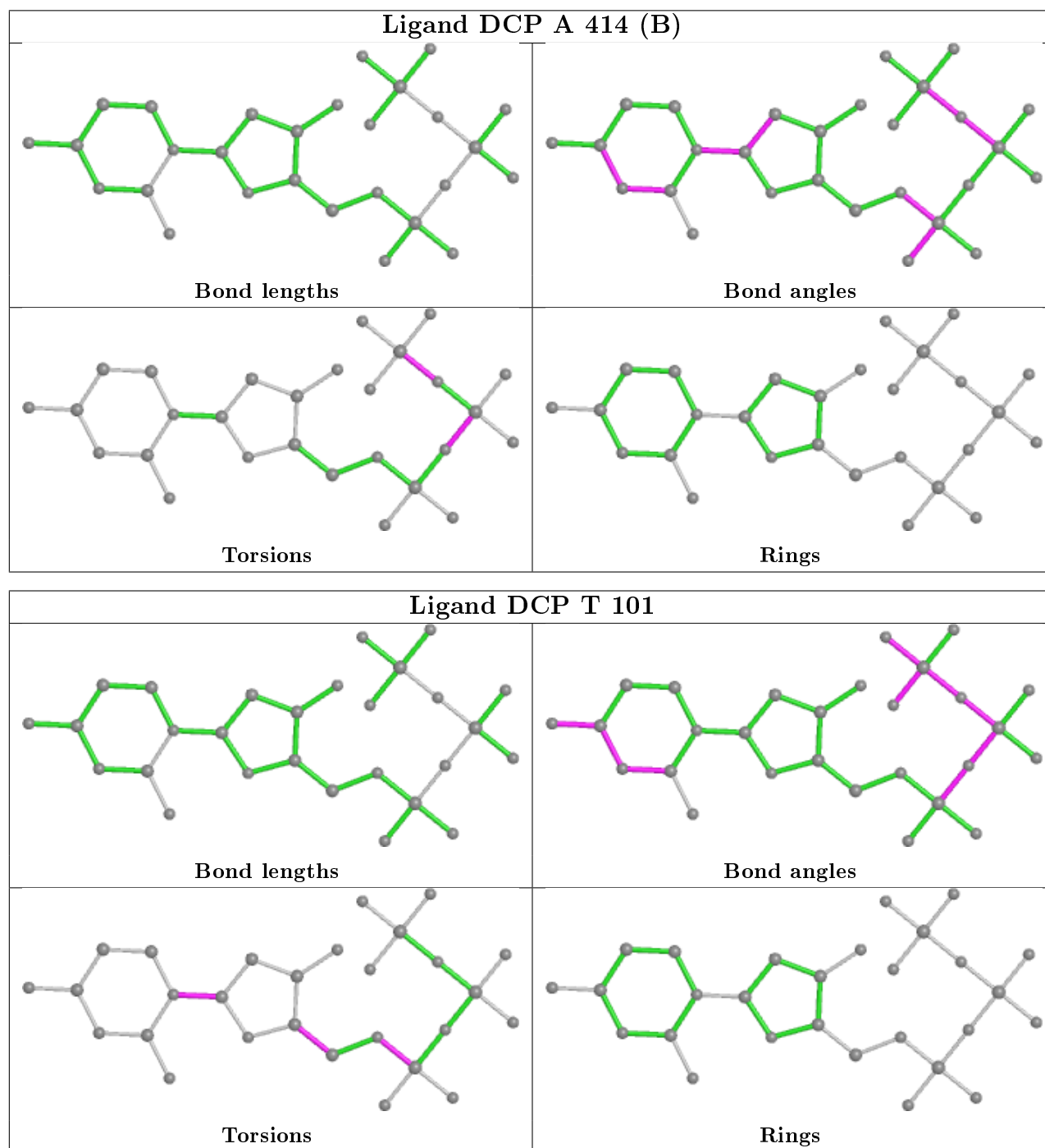
There are no ring outliers.

1 monomer is involved in 1 short contact:

Mol	Chain	Res	Type	Clashes	Symm-Clashes
10	T	101	DCP	1	0

The following is a two-dimensional graphical depiction of Mogul quality analysis of bond lengths, bond angles, torsion angles, and ring geometry for all instances of the Ligand of Interest. In addition, ligands with molecular weight > 250 and outliers as shown on the validation Tables will also be included. For torsion angles, if less than 5% of the Mogul distribution of torsion angles is within 10 degrees of the torsion angle in question, then that torsion angle is considered an outlier. Any bond that is central to one or more torsion angles identified as an outlier by Mogul will be highlighted in the graph. For rings, the root-mean-square deviation (RMSD) between the ring in question and similar rings identified by Mogul is calculated over all ring torsion angles. If the average RMSD is greater than 60 degrees and the minimal RMSD between the ring in question and any Mogul-identified rings is also greater than 60 degrees, then that ring is considered an outlier.

The outliers are highlighted in purple. The color gray indicates Mogul did not find sufficient equivalents in the CSD to analyse the geometry.



## 5.7 Other polymers ⓘ

There are no such residues in this entry.

## 5.8 Polymer linkage issues ⓘ

There are no chain breaks in this entry.



## 6 Fit of model and data [i](#)

### 6.1 Protein, DNA and RNA chains [i](#)

In the following table, the column labelled ‘#RSRZ> 2’ contains the number (and percentage) of RSRZ outliers, followed by percent RSRZ outliers for the chain as percentile scores relative to all X-ray entries and entries of similar resolution. The OWAB column contains the minimum, median, 95<sup>th</sup> percentile and maximum values of the occupancy-weighted average B-factor per residue. The column labelled ‘Q< 0.9’ lists the number of (and percentage) of residues with an average occupancy less than 0.9.

Mol	Chain	Analysed	<RSRZ>	#RSRZ>2	OWAB(Å <sup>2</sup> )	Q<0.9
1	A	326/343 (95%)	-0.01	8 (2%) 57 60	11, 19, 40, 62	0
2	D	5/5 (100%)	-0.57	0 100 100	16, 18, 26, 28	0
3	P	11/11 (100%)	-0.21	0 100 100	15, 23, 29, 31	1 (9%)
4	T	15/16 (93%)	-0.32	0 100 100	14, 27, 36, 38	0
All	All	357/375 (95%)	-0.04	8 (2%) 62 64	11, 19, 40, 62	1 (0%)

All (8) RSRZ outliers are listed below:

Mol	Chain	Res	Type	RSRZ
1	A	303	VAL	6.2
1	A	246	ASP	4.8
1	A	208	PRO	4.3
1	A	302	GLY	3.4
1	A	305	GLY	3.1
1	A	205	THR	2.3
1	A	304	THR	2.1
1	A	301	LEU	2.0

### 6.2 Non-standard residues in protein, DNA, RNA chains [i](#)

In the following table, the Atoms column lists the number of modelled atoms in the group and the number defined in the chemical component dictionary. The B-factors column lists the minimum, median, 95<sup>th</sup> percentile and maximum values of B factors of atoms in the group. The column labelled ‘Q< 0.9’ lists the number of atoms with occupancy less than 0.9.

Mol	Type	Chain	Res	Atoms	RSCC	RSR	B-factors(Å <sup>2</sup> )	Q<0.9
4	8OG	T	6	23/24	0.93	0.10	18,19,24,26	0

## 6.3 Carbohydrates ⓘ

There are no carbohydrates in this entry.

## 6.4 Ligands ⓘ

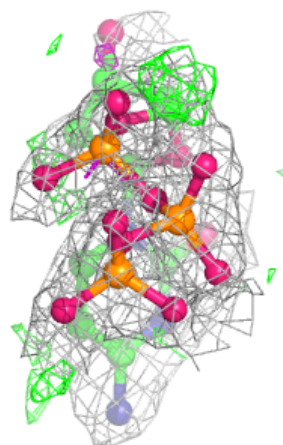
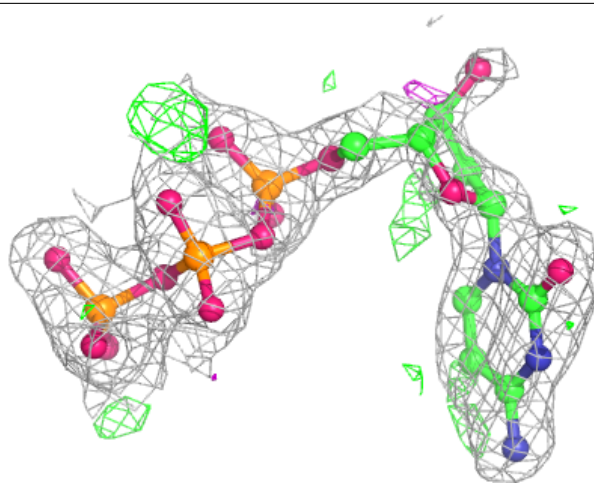
In the following table, the Atoms column lists the number of modelled atoms in the group and the number defined in the chemical component dictionary. The B-factors column lists the minimum, median, 95<sup>th</sup> percentile and maximum values of B factors of atoms in the group. The column labelled 'Q< 0.9' lists the number of atoms with occupancy less than 0.9.

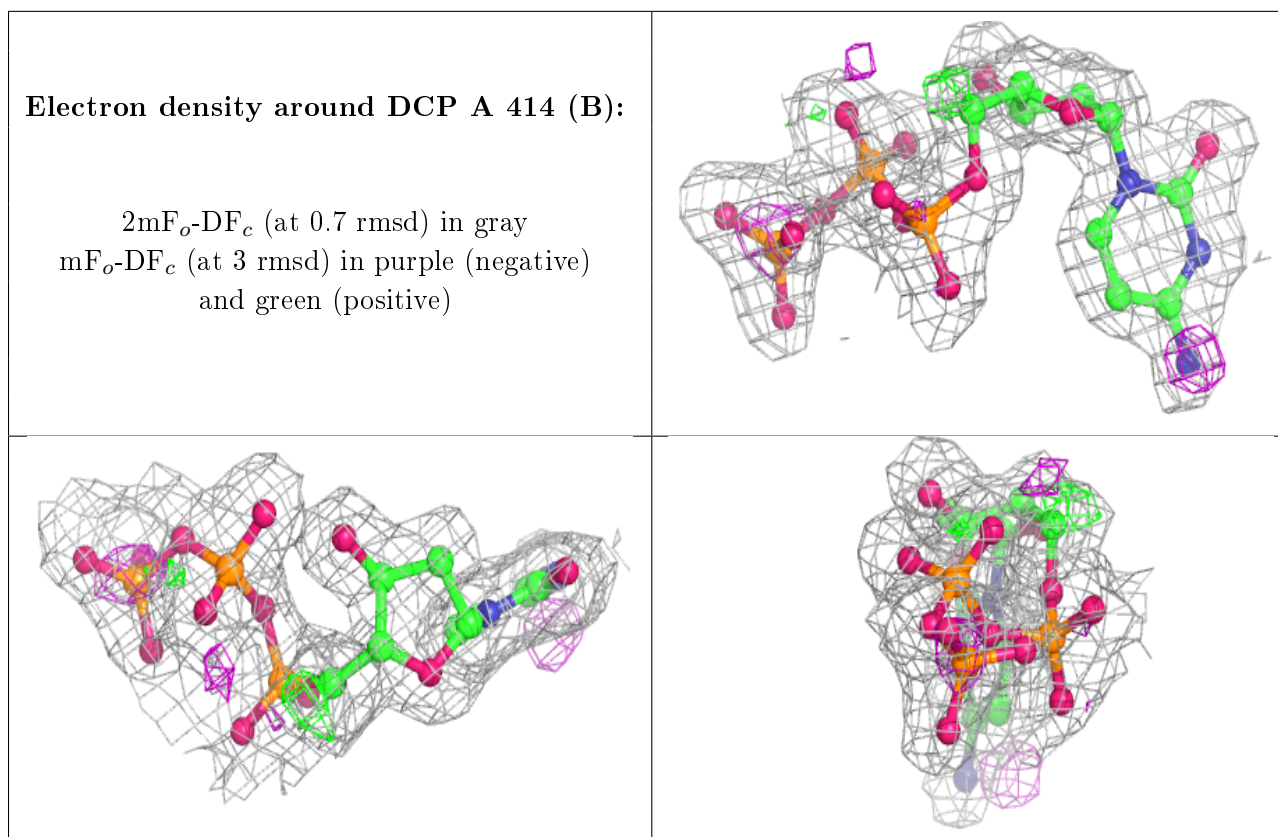
Mol	Type	Chain	Res	Atoms	RSCC	RSR	B-factors(Å <sup>2</sup> )	Q<0.9
6	NA	A	405	1/1	0.73	0.12	45,45,45,45	0
8	ACT	A	412	4/4	0.77	0.21	28,29,31,33	0
5	MG	P	101	1/1	0.77	0.18	17,17,17,17	1
8	ACT	T	103	4/4	0.84	0.17	47,48,48,48	0
6	NA	A	406	1/1	0.87	0.09	42,42,42,42	0
10	DCP	T	101	28/28	0.88	0.14	25,26,29,30	28
6	NA	T	102	1/1	0.88	0.08	43,43,43,43	0
6	NA	A	403	1/1	0.92	0.04	46,46,46,46	0
5	MG	A	402	1/1	0.95	0.13	14,14,14,14	0
10	DCP	A	414[B]	28/28	0.95	0.11	12,13,16,17	28
6	NA	D	101	1/1	0.96	0.07	33,33,33,33	0
9	PPV	A	413[A]	9/9	0.97	0.08	14,15,16,16	9
7	CL	A	409	1/1	0.98	0.03	23,23,23,23	0
7	CL	A	408	1/1	0.98	0.08	31,31,31,31	0
6	NA	A	404	1/1	0.98	0.09	18,18,18,18	0
6	NA	A	407	1/1	0.98	0.11	12,12,12,12	0
5	MG	A	401	1/1	0.98	0.10	11,11,11,11	0
7	CL	A	411	1/1	0.99	0.05	24,24,24,24	0
7	CL	A	410	1/1	0.99	0.04	28,28,28,28	0

The following is a graphical depiction of the model fit to experimental electron density of all instances of the Ligand of Interest. In addition, ligands with molecular weight > 250 and outliers as shown on the geometry validation Tables will also be included. Each fit is shown from different orientation to approximate a three-dimensional view.

**Electron density around DCP T 101:**

$2mF_o-DF_c$  (at 0.7 rmsd) in gray  
 $mF_o-DF_c$  (at 3 rmsd) in purple (negative)  
and green (positive)





## 6.5 Other polymers [i](#)

There are no such residues in this entry.