



Full wwPDB X-ray Structure Validation Report ⓘ

May 22, 2020 – 07:00 am BST

PDB ID : 3RQM
Title : Structure of the neuronal nitric oxide synthase heme domain in complex with 6-{{[(3R,4R)-4-(2-{{[(2R/2S)-1-(3-fluorophenyl)propan-2-yl]amino}ethoxy)pyrrolidin-3-yl]methyl}-4-methylpyridin-2-amine
Authors : Li, H.; Delker, S.L.; Poulos, T.L.
Deposited on : 2011-04-28
Resolution : 1.95 Å(reported)

This is a Full wwPDB X-ray Structure Validation Report for a publicly released PDB entry.

We welcome your comments at validation@mail.wwpdb.org

A user guide is available at

<https://www.wwpdb.org/validation/2017/XrayValidationReportHelp>

with specific help available everywhere you see the ⓘ symbol.

The following versions of software and data (see [references ⓘ](#)) were used in the production of this report:

MolProbity : 4.02b-467
Mogul : 1.8.5 (274361), CSD as541be (2020)
Xtriage (Phenix) : 1.13
EDS : 2.11
buster-report : 1.1.7 (2018)
Percentile statistics : 20191225.v01 (using entries in the PDB archive December 25th 2019)
Refmac : 5.8.0158
CCP4 : 7.0.044 (Gargrove)
Ideal geometry (proteins) : Engh & Huber (2001)
Ideal geometry (DNA, RNA) : Parkinson et al. (1996)
Validation Pipeline (wwPDB-VP) : 2.11

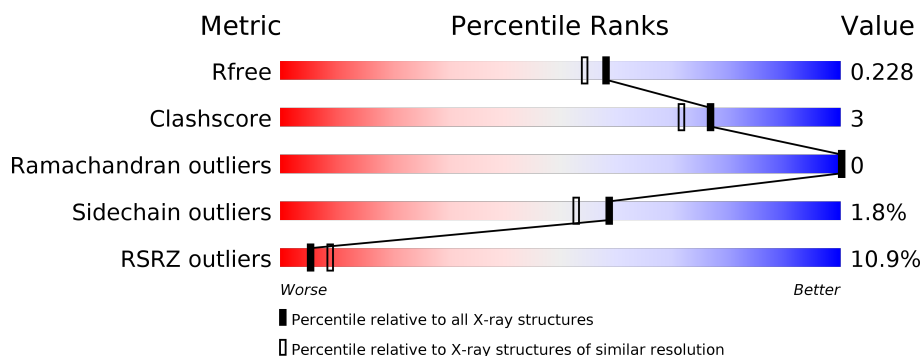
1 Overall quality at a glance

The following experimental techniques were used to determine the structure:

X-RAY DIFFRACTION

The reported resolution of this entry is 1.95 Å.

Percentile scores (ranging between 0-100) for global validation metrics of the entry are shown in the following graphic. The table shows the number of entries on which the scores are based.



Metric	Whole archive (#Entries)	Similar resolution (#Entries, resolution range(Å))
R_{free}	130704	2580 (1.96-1.96)
Clashscore	141614	2705 (1.96-1.96)
Ramachandran outliers	138981	2678 (1.96-1.96)
Sidechain outliers	138945	2678 (1.96-1.96)
RSRZ outliers	127900	2539 (1.96-1.96)

The table below summarises the geometric issues observed across the polymeric chains and their fit to the electron density. The red, orange, yellow and green segments on the lower bar indicate the fraction of residues that contain outliers for ≥ 3 , 2, 1 and 0 types of geometric quality criteria respectively. A grey segment represents the fraction of residues that are not modelled. The numeric value for each fraction is indicated below the corresponding segment, with a dot representing fractions $\leq 5\%$. The upper red bar (where present) indicates the fraction of residues that have poor fit to the electron density. The numeric value is given above the bar.

Mol	Chain	Length	Quality of chain
1	A	422	<div> <div>15%</div> <div> <div></div> <div>87%</div> <div>9%</div> <div>.</div> </div> </div>
1	B	422	<div> <div>6%</div> <div> <div></div> <div>91%</div> <div>6%</div> <div>.</div> </div> </div>

2 Entry composition [i](#)

There are 7 unique types of molecules in this entry. The entry contains 7398 atoms, of which 0 are hydrogens and 0 are deuteriums.

In the tables below, the ZeroOcc column contains the number of atoms modelled with zero occupancy, the AltConf column contains the number of residues with at least one atom in alternate conformation and the Trace column contains the number of residues modelled with at most 2 atoms.

- Molecule 1 is a protein called Nitric oxide synthase, brain.

Mol	Chain	Residues	Atoms					ZeroOcc	AltConf	Trace
1	A	407	Total	C	N	O	S	0	2	0
			3321	2126	566	607	22			
1	B	411	Total	C	N	O	S	0	1	0
			3350	2143	574	612	21			

- Molecule 2 is PROTOPORPHYRIN IX CONTAINING FE (three-letter code: HEM) (formula: $C_{34}H_{32}FeN_4O_4$).



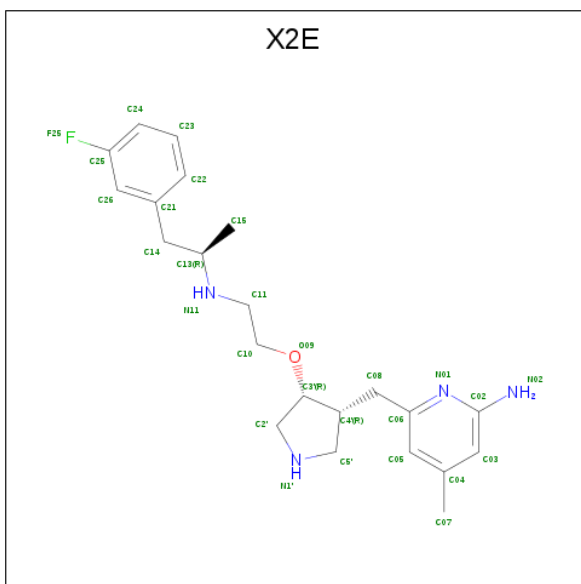
Mol	Chain	Residues	Atoms					ZeroOcc	AltConf
2	A	1	Total	C	Fe	N	O	0	0
			43	34	1	4	4		
2	B	1	Total	C	Fe	N	O	0	0
			43	34	1	4	4		

- Molecule 3 is 5,6,7,8-TETRAHYDROBIOPTERIN (three-letter code: H4B) (formula: $C_9H_{15}N_5O_3$).



Mol	Chain	Residues	Atoms				ZeroOcc	AltConf
3	A	1	Total	C	N	O	0	0
			17	9	5	3		
3	B	1	Total	C	N	O	0	0
			17	9	5	3		

- Molecule 4 is 6-{{[(3R,4R)-4-(2-{{[(2R)-1-(3-fluorophenyl)propan-2-yl]amino}ethoxy)pyrrolidin-3-yl]methyl}-4-methylpyridin-2-amine (three-letter code: X2E) (formula: C₂₂H₃₁FN₄O).



Mol	Chain	Residues	Atoms					ZeroOcc	AltConf
4	A	1	Total	C	F	N	O	0	0
			28	22	1	4	1		

Continued on next page...

Continued from previous page...

Mol	Chain	Residues	Atoms					ZeroOcc	AltConf
4	B	1	Total	C	F	N	O	0	0
			28	22	1	4	1		

- Molecule 5 is ACETATE ION (three-letter code: ACT) (formula: $C_2H_3O_2$).



Mol	Chain	Residues	Atoms			ZeroOcc	AltConf
5	A	1	Total	C	O	0	0
			4	2	2		
5	B	1	Total	C	O	0	0
			4	2	2		

- Molecule 6 is ZINC ION (three-letter code: ZN) (formula: Zn).

Mol	Chain	Residues	Atoms		ZeroOcc	AltConf
6	A	1	Total	Zn	0	0
			1	1		

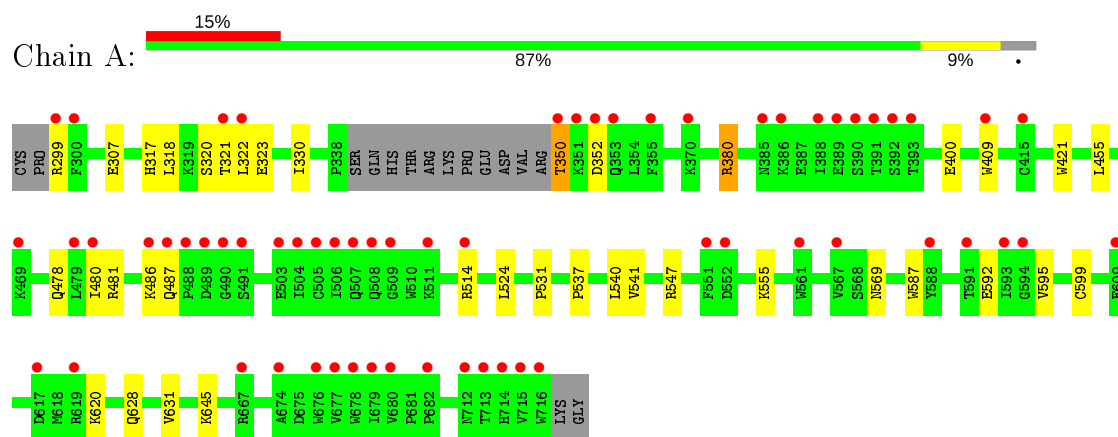
- Molecule 7 is water.

Mol	Chain	Residues	Atoms		ZeroOcc	AltConf
7	A	226	Total	O	0	2
			226	226		
7	B	316	Total	O	0	2
			316	316		

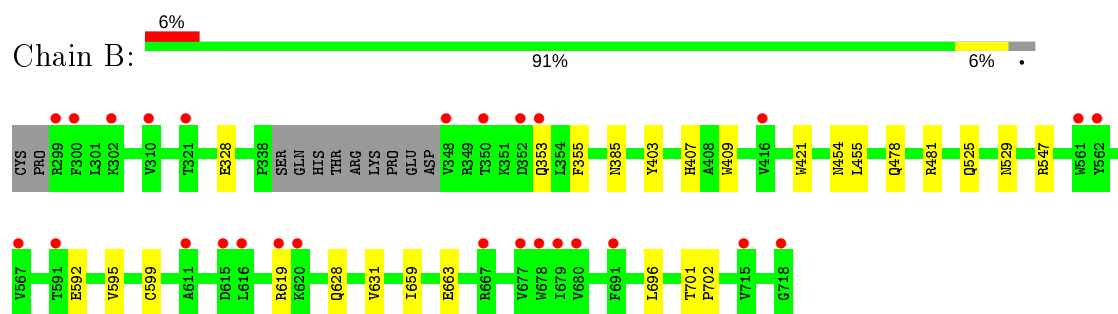
3 Residue-property plots [i](#)

These plots are drawn for all protein, RNA and DNA chains in the entry. The first graphic for a chain summarises the proportions of the various outlier classes displayed in the second graphic. The second graphic shows the sequence view annotated by issues in geometry and electron density. Residues are color-coded according to the number of geometric quality criteria for which they contain at least one outlier: green = 0, yellow = 1, orange = 2 and red = 3 or more. A red dot above a residue indicates a poor fit to the electron density ($RSRZ > 2$). Stretches of 2 or more consecutive residues without any outlier are shown as a green connector. Residues present in the sample, but not in the model, are shown in grey.

- Molecule 1: Nitric oxide synthase, brain



- Molecule 1: Nitric oxide synthase, brain



4 Data and refinement statistics

Property	Value	Source
Space group	P 21 21 21	Depositor
Cell constants a, b, c, α , β , γ	52.15Å 110.79Å 164.43Å 90.00° 90.00° 90.00°	Depositor
Resolution (Å)	40.93 – 1.95 38.96 – 1.95	Depositor EDS
% Data completeness (in resolution range)	99.5 (40.93-1.95) 99.6 (38.96-1.95)	Depositor EDS
R_{merge}	0.06	Depositor
R_{sym}	0.06	Depositor
$\langle I/\sigma(I) \rangle$ ¹	2.83 (at 1.95Å)	Xtriage
Refinement program	REFMAC	Depositor
R, R_{free}	0.173 , 0.208 0.199 , 0.228	Depositor DCC
R_{free} test set	3451 reflections (4.94%)	wwPDB-VP
Wilson B-factor (Å ²)	30.2	Xtriage
Anisotropy	0.393	Xtriage
Bulk solvent k_{sol} (e/Å ³), B_{sol} (Å ²)	0.34 , 38.5	EDS
L-test for twinning ²	$\langle L \rangle = 0.49$, $\langle L^2 \rangle = 0.33$	Xtriage
Estimated twinning fraction	No twinning to report.	Xtriage
F_o, F_c correlation	0.96	EDS
Total number of atoms	7398	wwPDB-VP
Average B, all atoms (Å ²)	40.0	wwPDB-VP

Xtriage's analysis on translational NCS is as follows: *The largest off-origin peak in the Patterson function is 5.33% of the height of the origin peak. No significant pseudotranslation is detected.*

¹Intensities estimated from amplitudes.

²Theoretical values of $\langle |L| \rangle$, $\langle L^2 \rangle$ for acentric reflections are 0.5, 0.333 respectively for untwinned datasets, and 0.375, 0.2 for perfectly twinned datasets.

5 Model quality

5.1 Standard geometry

Bond lengths and bond angles in the following residue types are not validated in this section: X2E, HEM, ZN, H4B, ACT

The Z score for a bond length (or angle) is the number of standard deviations the observed value is removed from the expected value. A bond length (or angle) with $|Z| > 5$ is considered an outlier worth inspection. RMSZ is the root-mean-square of all Z scores of the bond lengths (or angles).

Mol	Chain	Bond lengths		Bond angles	
		RMSZ	$\# Z > 5$	RMSZ	$\# Z > 5$
1	A	0.60	0/3421	0.64	0/4641
1	B	0.65	0/3447	0.63	0/4673
All	All	0.63	0/6868	0.64	0/9314

There are no bond length outliers.

There are no bond angle outliers.

There are no chirality outliers.

There are no planarity outliers.

5.2 Too-close contacts

In the following table, the Non-H and H(model) columns list the number of non-hydrogen atoms and hydrogen atoms in the chain respectively. The H(added) column lists the number of hydrogen atoms added and optimized by MolProbity. The Clashes column lists the number of clashes within the asymmetric unit, whereas Symm-Clashes lists symmetry related clashes.

Mol	Chain	Non-H	H(model)	H(added)	Clashes	Symm-Clashes
1	A	3321	0	3228	22	0
1	B	3350	0	3261	14	0
2	A	43	0	30	4	0
2	B	43	0	30	4	0
3	A	17	0	15	0	0
3	B	17	0	15	0	0
4	A	28	0	31	3	0
4	B	28	0	31	1	0
5	A	4	0	3	0	0
5	B	4	0	3	1	0
6	A	1	0	0	0	0

Continued on next page...

Continued from previous page...

Mol	Chain	Non-H	H(model)	H(added)	Clashes	Symm-Clashes
7	A	226	0	0	1	0
7	B	316	0	0	1	0
All	All	7398	0	6647	40	0

The all-atom clashscore is defined as the number of clashes found per 1000 atoms (including hydrogen atoms). The all-atom clashscore for this structure is 3.

All (40) close contacts within the same asymmetric unit are listed below, sorted by their clash magnitude.

Atom-1	Atom-2	Interatomic distance (Å)	Clash overlap (Å)
1:A:592[A]:GLU:OE1	4:A:805:X2E:H22	1.90	0.72
1:A:480:ILE:HD13	1:A:541:VAL:HG13	1.77	0.66
2:B:750:HEM:HBB2	2:B:750:HEM:HHC	1.76	0.66
1:B:592[A]:GLU:OE1	4:B:805:X2E:H22	2.03	0.59
1:A:628:GLN:HG2	1:B:631:VAL:HG11	1.84	0.58
1:A:631:VAL:HG11	1:B:628:GLN:HG3	1.87	0.56
1:A:537:PRO:HB2	1:A:540:LEU:HG	1.88	0.56
1:A:380:ARG:HD3	1:A:400:GLU:OE1	2.05	0.56
1:A:455:LEU:HD12	1:A:587:TRP:HB3	1.89	0.55
2:A:750:HEM:HHC	2:A:750:HEM:HBB2	1.88	0.54
1:A:350:THR:HG22	7:A:1144:HOH:O	2.10	0.52
1:B:355:PHE:CE1	1:B:385:ASN:HB2	2.45	0.52
1:A:487:GLN:HG3	1:A:514:ARG:NH1	2.25	0.52
1:A:307:GLU:HG3	7:B:1074:HOH:O	2.10	0.51
1:A:299:ARG:HG3	1:A:318:LEU:HD21	1.92	0.51
1:B:478:GLN:HB2	1:B:481:ARG:HG3	1.94	0.50
1:B:525:GLN:HG3	1:B:529:ASN:O	2.13	0.49
1:A:330:ILE:HD11	1:B:696:LEU:HB3	1.93	0.49
1:B:403:TYR:CE1	1:B:407:HIS:CE1	3.02	0.47
2:A:750:HEM:CMC	2:A:750:HEM:HBC2	2.46	0.46
1:B:659:ILE:O	1:B:663:GLU:HG3	2.15	0.46
1:A:317:HIS:O	1:A:320:SER:HB3	2.17	0.45
1:A:478:GLN:HB2	1:A:481:ARG:HG3	1.98	0.45
1:A:299:ARG:HG3	1:A:318:LEU:CD2	2.48	0.44
1:B:409:TRP:CE3	1:B:421:TRP:HA	2.52	0.44
1:A:455:LEU:HD12	1:A:587:TRP:CB	2.48	0.44
2:A:750:HEM:HMC1	2:A:750:HEM:HBC2	1.98	0.44
1:A:409:TRP:CE3	1:A:421:TRP:HA	2.53	0.43
1:A:592[B]:GLU:OE1	4:A:805:X2E:H15B	2.19	0.43
2:B:750:HEM:CBB	2:B:750:HEM:HHC	2.47	0.43
1:A:524:LEU:O	1:A:531:PRO:HA	2.19	0.42

Continued on next page...

Continued from previous page...

Atom-1	Atom-2	Interatomic distance (Å)	Clash overlap (Å)
1:B:595:VAL:O	1:B:599:CYS:HB2	2.19	0.42
1:A:595:VAL:O	1:A:599:CYS:HB2	2.19	0.42
1:A:323:GLU:HG2	1:B:328:GLU:HB3	2.01	0.42
2:B:750:HEM:HBC2	2:B:750:HEM:CMC	2.49	0.42
2:A:750:HEM:O2A	4:A:805:X2E:N1'	2.52	0.42
1:A:321:THR:HG23	1:A:322:LEU:HG	2.02	0.42
1:B:701:THR:HA	1:B:702:PRO:C	2.40	0.41
1:B:619:ARG:HE	1:B:619:ARG:HB2	1.58	0.41
2:B:750:HEM:HMB3	5:B:860:ACT:H2	2.03	0.40

There are no symmetry-related clashes.

5.3 Torsion angles [i](#)

5.3.1 Protein backbone [i](#)

In the following table, the Percentiles column shows the percent Ramachandran outliers of the chain as a percentile score with respect to all X-ray entries followed by that with respect to entries of similar resolution.

The Analysed column shows the number of residues for which the backbone conformation was analysed, and the total number of residues.

Mol	Chain	Analysed	Favoured	Allowed	Outliers	Percentiles	
1	A	405/422 (96%)	397 (98%)	8 (2%)	0	100	100
1	B	408/422 (97%)	400 (98%)	8 (2%)	0	100	100
All	All	813/844 (96%)	797 (98%)	16 (2%)	0	100	100

There are no Ramachandran outliers to report.

5.3.2 Protein sidechains [i](#)

In the following table, the Percentiles column shows the percent sidechain outliers of the chain as a percentile score with respect to all X-ray entries followed by that with respect to entries of similar resolution.

The Analysed column shows the number of residues for which the sidechain conformation was analysed, and the total number of residues.

Mol	Chain	Analysed	Rotameric	Outliers	Percentiles	
1	A	365/377 (97%)	356 (98%)	9 (2%)	47	38
1	B	367/377 (97%)	363 (99%)	4 (1%)	73	71
All	All	732/754 (97%)	719 (98%)	13 (2%)	59	53

All (13) residues with a non-rotameric sidechain are listed below:

Mol	Chain	Res	Type
1	A	350	THR
1	A	352	ASP
1	A	380	ARG
1	A	486	LYS
1	A	547	ARG
1	A	555	LYS
1	A	569	ASN
1	A	620	LYS
1	A	645	LYS
1	B	353	GLN
1	B	454	ASN
1	B	455	LEU
1	B	547	ARG

Some sidechains can be flipped to improve hydrogen bonding and reduce clashes. All (15) such sidechains are listed below:

Mol	Chain	Res	Type
1	A	425	GLN
1	A	454	ASN
1	A	527	ASN
1	A	569	ASN
1	A	605	ASN
1	A	642	GLN
1	A	697	ASN
1	B	364	GLN
1	B	454	ASN
1	B	507	GLN
1	B	535	GLN
1	B	601	ASN
1	B	605	ASN
1	B	642	GLN
1	B	697	ASN

5.3.3 RNA ⓘ

There are no RNA molecules in this entry.

5.4 Non-standard residues in protein, DNA, RNA chains ⓘ

There are no non-standard protein/DNA/RNA residues in this entry.

5.5 Carbohydrates ⓘ

There are no carbohydrates in this entry.

5.6 Ligand geometry ⓘ

Of 9 ligands modelled in this entry, 1 is monoatomic - leaving 8 for Mogul analysis.

In the following table, the Counts columns list the number of bonds (or angles) for which Mogul statistics could be retrieved, the number of bonds (or angles) that are observed in the model and the number of bonds (or angles) that are defined in the Chemical Component Dictionary. The Link column lists molecule types, if any, to which the group is linked. The Z score for a bond length (or angle) is the number of standard deviations the observed value is removed from the expected value. A bond length (or angle) with $|Z| > 2$ is considered an outlier worth inspection. RMSZ is the root-mean-square of all Z scores of the bond lengths (or angles).

Mol	Type	Chain	Res	Link	Bond lengths			Bond angles		
					Counts	RMSZ	# Z > 2	Counts	RMSZ	# Z > 2
3	H4B	A	760	-	16,18,18	0.96	1 (6%)	11,26,26	2.90	7 (63%)
4	X2E	A	805	-	29,30,30	1.03	2 (6%)	34,40,40	1.62	8 (23%)
2	HEM	A	750	1	27,50,50	2.02	7 (25%)	17,82,82	2.57	6 (35%)
4	X2E	B	805	-	29,30,30	0.87	0	34,40,40	2.03	10 (29%)
3	H4B	B	760	-	16,18,18	1.22	1 (6%)	11,26,26	2.48	5 (45%)
5	ACT	B	860	-	1,3,3	1.39	0	0,3,3	0.00	-
5	ACT	A	860	-	1,3,3	1.68	0	0,3,3	0.00	-
2	HEM	B	750	1	27,50,50	2.19	8 (29%)	17,82,82	2.83	3 (17%)

In the following table, the Chirals column lists the number of chiral outliers, the number of chiral centers analysed, the number of these observed in the model and the number defined in the Chemical Component Dictionary. Similar counts are reported in the Torsion and Rings columns. '-' means no outliers of that kind were identified.

Mol	Type	Chain	Res	Link	Chirals	Torsions	Rings
3	H4B	A	760	-	-	0/8/17/17	0/2/2/2

Continued on next page...

Continued from previous page...

Mol	Type	Chain	Res	Link	Chirals	Torsions	Rings
4	X2E	A	805	-	-	4/15/25/25	0/3/3/3
2	HEM	A	750	1	-	0/6/54/54	-
4	X2E	B	805	-	-	5/15/25/25	0/3/3/3
3	H4B	B	760	-	-	0/8/17/17	0/2/2/2
2	HEM	B	750	1	-	0/6/54/54	-

All (19) bond length outliers are listed below:

Mol	Chain	Res	Type	Atoms	Z	Observed(Å)	Ideal(Å)
2	B	750	HEM	C3C-C2C	-5.11	1.33	1.40
2	A	750	HEM	C3B-C2B	-4.63	1.33	1.40
2	A	750	HEM	C3D-C2D	4.53	1.51	1.37
2	B	750	HEM	C3D-C2D	4.26	1.50	1.37
2	B	750	HEM	C3C-CAC	3.78	1.55	1.47
2	A	750	HEM	C3C-C2C	-3.57	1.35	1.40
2	B	750	HEM	C3B-C2B	-3.45	1.35	1.40
2	B	750	HEM	C3B-CAB	3.44	1.54	1.47
2	A	750	HEM	C3B-CAB	3.29	1.54	1.47
2	A	750	HEM	C3C-CAC	3.05	1.54	1.47
3	B	760	H4B	C7-C6	3.04	1.55	1.52
4	A	805	X2E	C13-N11	-2.84	1.44	1.48
2	B	750	HEM	CMD-C2D	2.59	1.57	1.51
2	B	750	HEM	CAD-C3D	2.49	1.56	1.52
4	A	805	X2E	C14-C13	-2.48	1.49	1.53
2	A	750	HEM	CMD-C2D	2.41	1.56	1.51
3	A	760	H4B	C2-N2	2.40	1.38	1.33
2	B	750	HEM	CMA-C3A	2.12	1.56	1.51
2	A	750	HEM	C1D-ND	2.10	1.40	1.36

All (39) bond angle outliers are listed below:

Mol	Chain	Res	Type	Atoms	Z	Observed(°)	Ideal(°)
2	B	750	HEM	CBA-CAA-C2A	-8.36	97.07	112.49
4	B	805	X2E	C02-N01-C06	7.65	123.89	118.10
2	A	750	HEM	CBD-CAD-C3D	-6.28	100.91	112.48
2	A	750	HEM	CBA-CAA-C2A	-6.08	101.27	112.49
2	B	750	HEM	CBD-CAD-C3D	-5.32	102.68	112.48
3	B	760	H4B	C4-C4A-C8A	4.79	118.82	114.57
3	A	760	H4B	C4-C4A-N5	4.27	122.70	119.12
2	B	750	HEM	C1D-C2D-C3D	-4.18	104.09	107.00
3	A	760	H4B	N3-C2-N1	-4.14	118.93	125.42
4	A	805	X2E	C02-N01-C06	3.79	120.98	118.10

Continued on next page...

Continued from previous page...

Mol	Chain	Res	Type	Atoms	Z	Observed(°)	Ideal(°)
3	A	760	H4B	C4-C4A-C8A	3.77	117.92	114.57
3	A	760	H4B	C4-N3-C2	3.49	121.47	115.93
3	A	760	H4B	C2-N1-C8A	3.49	122.35	114.54
4	B	805	X2E	C04-C05-C06	-3.15	118.25	120.32
3	B	760	H4B	C4-N3-C2	3.11	120.86	115.93
3	B	760	H4B	N3-C2-N1	-3.10	120.56	125.42
4	B	805	X2E	C05-C06-N01	-3.04	119.68	122.90
2	A	750	HEM	C1D-C2D-C3D	-3.04	104.88	107.00
4	A	805	X2E	N02-C02-N01	2.98	121.19	116.49
4	A	805	X2E	C5'-N1'-C2'	2.92	112.31	105.42
3	B	760	H4B	C4-C4A-N5	2.92	121.57	119.12
3	A	760	H4B	N2-C2-N3	2.71	121.47	117.25
2	A	750	HEM	C4C-C3C-C2C	2.71	108.79	106.90
4	B	805	X2E	N02-C02-N01	2.64	120.66	116.49
4	A	805	X2E	C24-C23-C22	-2.63	116.51	120.25
3	B	760	H4B	C2-N1-C8A	2.56	120.27	114.54
4	A	805	X2E	C24-C25-C26	-2.45	120.10	123.29
4	B	805	X2E	O09-C10-C11	-2.45	101.32	109.33
4	B	805	X2E	C21-C26-C25	2.43	121.02	118.81
4	B	805	X2E	C5'-N1'-C2'	2.32	110.90	105.42
4	A	805	X2E	C3'-C2'-N1'	-2.32	101.31	105.20
4	A	805	X2E	C06-C08-C4'	-2.32	107.92	115.55
4	B	805	X2E	C10-C11-N11	2.26	117.20	111.54
2	A	750	HEM	C3C-C4C-NC	-2.25	106.69	110.94
4	B	805	X2E	C06-C08-C4'	-2.22	108.25	115.55
4	B	805	X2E	C05-C04-C03	2.21	120.72	118.09
2	A	750	HEM	CMA-C3A-C4A	-2.12	125.21	128.46
4	A	805	X2E	C23-C24-C25	2.09	122.47	118.23
3	A	760	H4B	C4A-N5-C6	-2.03	115.64	121.16

There are no chirality outliers.

All (9) torsion outliers are listed below:

Mol	Chain	Res	Type	Atoms
4	A	805	X2E	N01-C06-C08-C4'
4	A	805	X2E	C14-C13-N11-C11
4	A	805	X2E	C15-C13-N11-C11
4	B	805	X2E	N01-C06-C08-C4'
4	B	805	X2E	C14-C13-N11-C11
4	B	805	X2E	C15-C13-N11-C11
4	B	805	X2E	C15-C13-C14-C21
4	A	805	X2E	O09-C10-C11-N11

Continued on next page...

Continued from previous page...

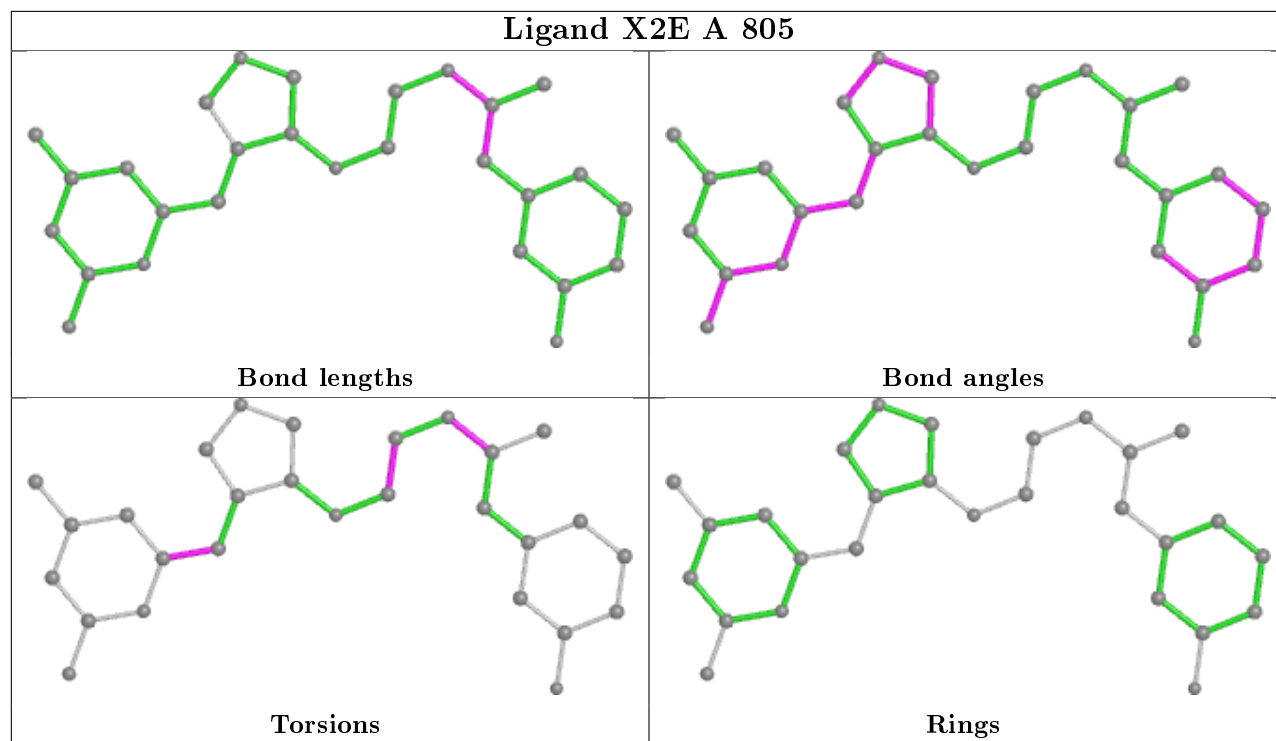
Mol	Chain	Res	Type	Atoms
4	B	805	X2E	O09-C10-C11-N11

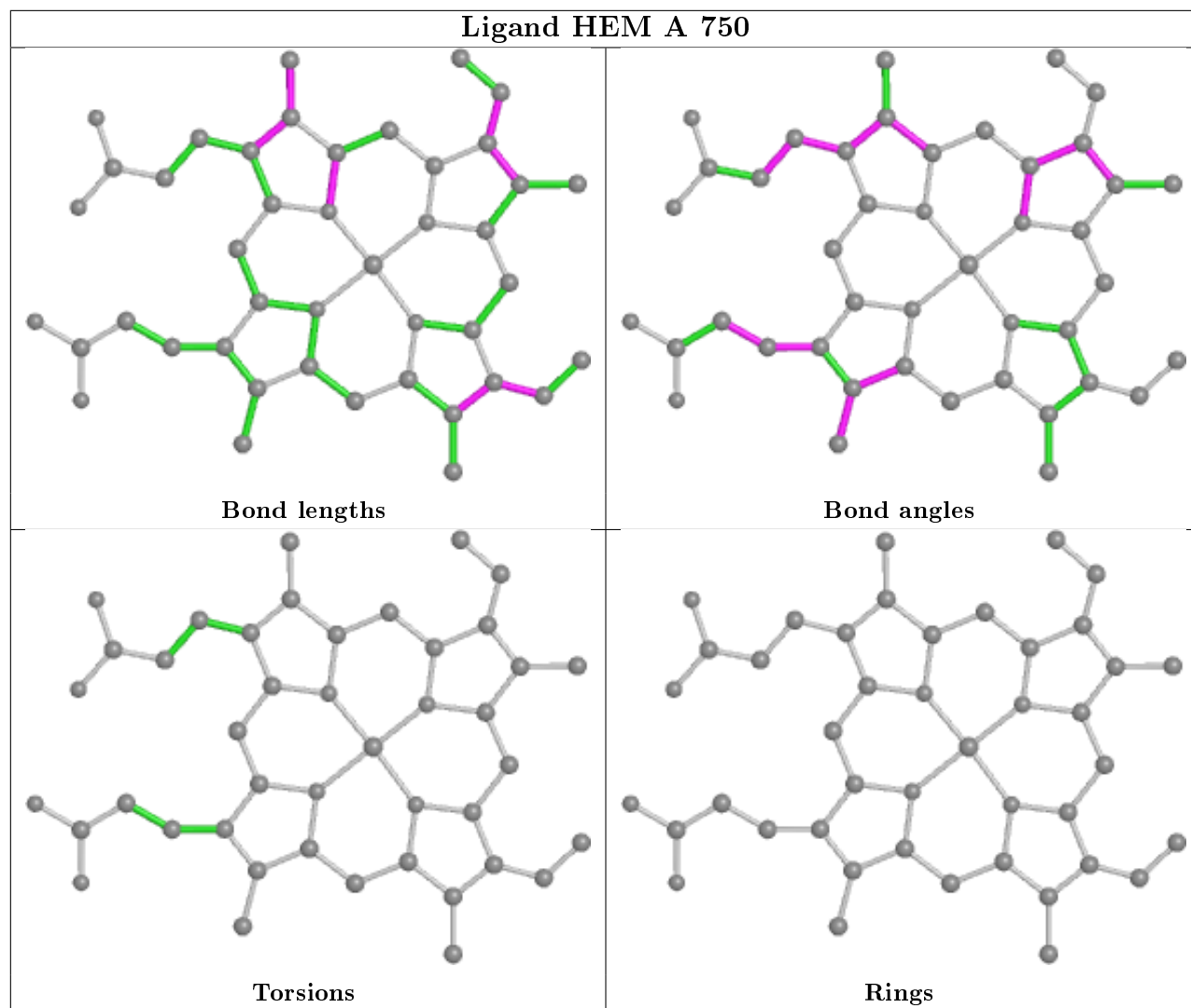
There are no ring outliers.

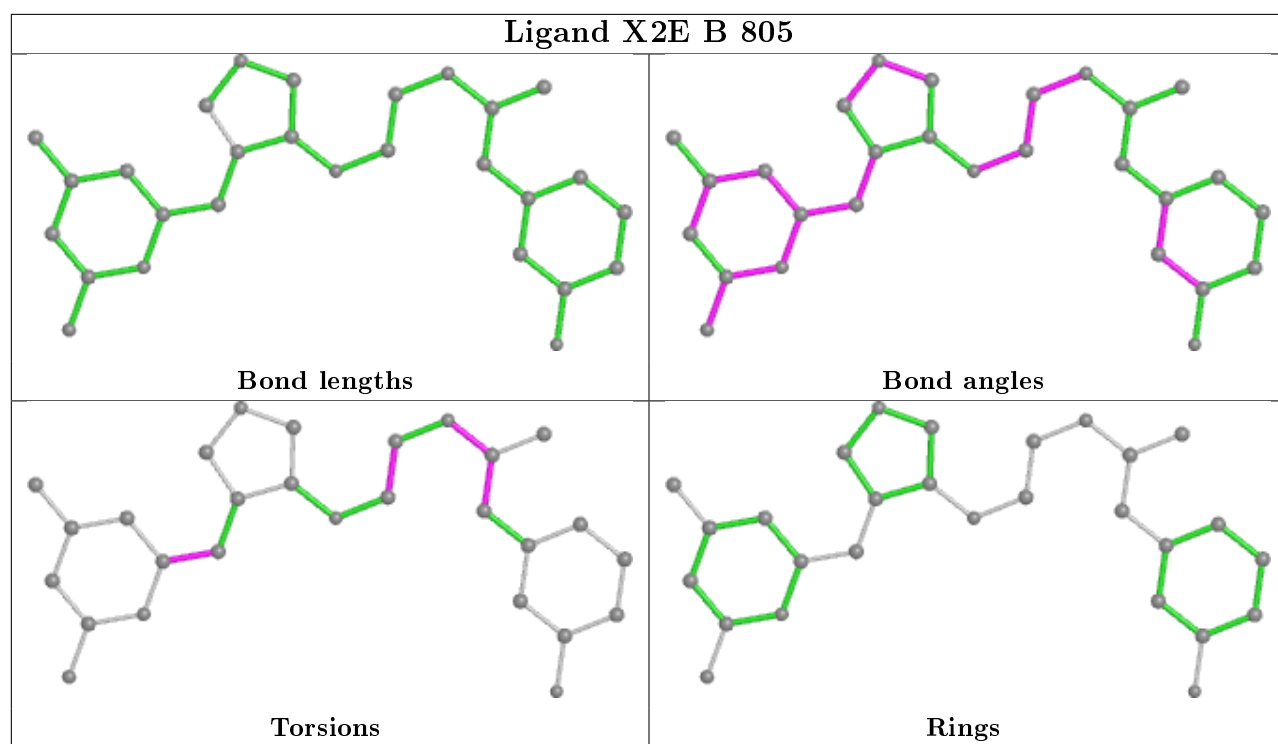
5 monomers are involved in 11 short contacts:

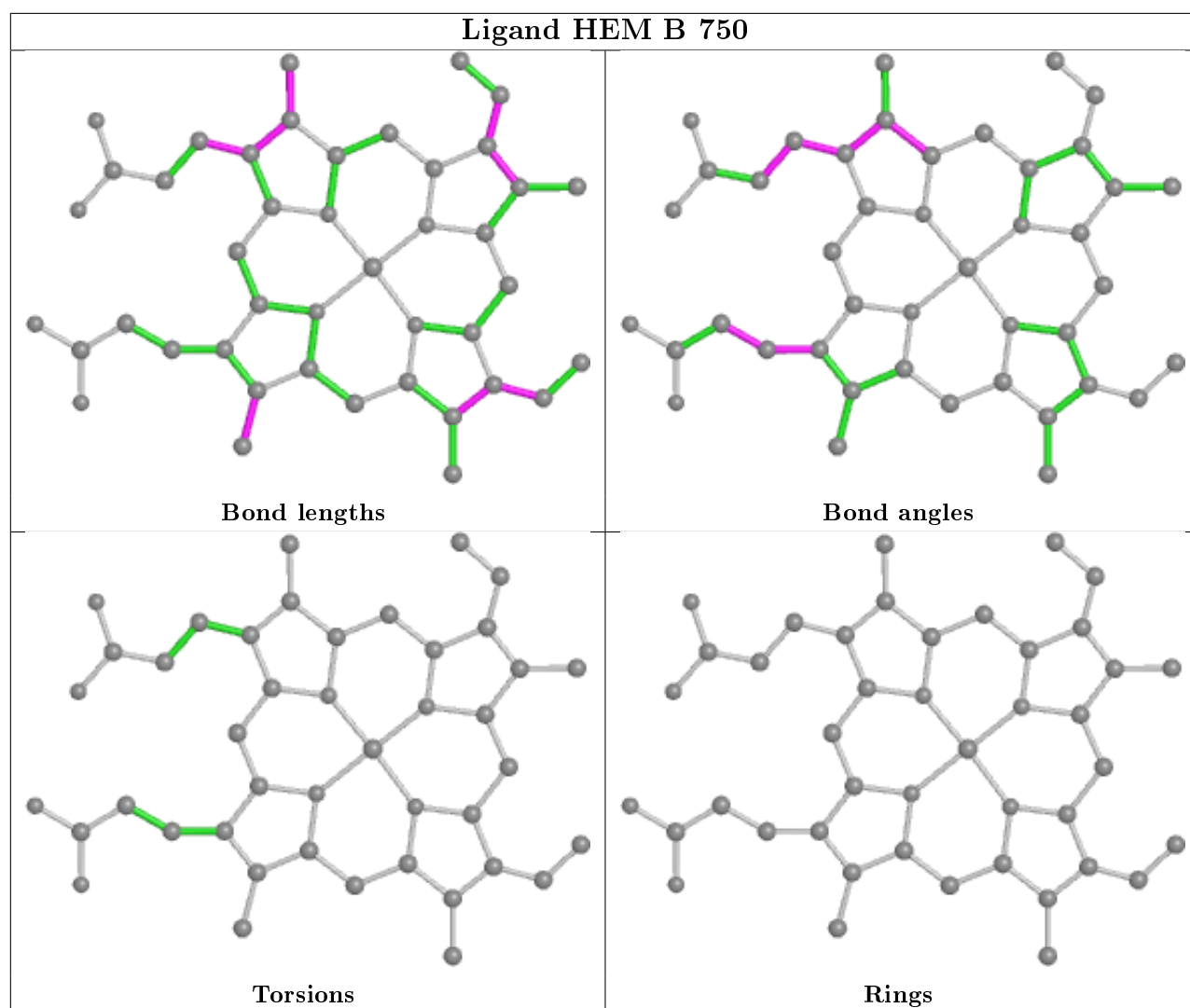
Mol	Chain	Res	Type	Clashes	Symm-Clashes
4	A	805	X2E	3	0
2	A	750	HEM	4	0
4	B	805	X2E	1	0
5	B	860	ACT	1	0
2	B	750	HEM	4	0

The following is a two-dimensional graphical depiction of Mogul quality analysis of bond lengths, bond angles, torsion angles, and ring geometry for all instances of the Ligand of Interest. In addition, ligands with molecular weight > 250 and outliers as shown on the validation Tables will also be included. For torsion angles, if less than 5% of the Mogul distribution of torsion angles is within 10 degrees of the torsion angle in question, then that torsion angle is considered an outlier. Any bond that is central to one or more torsion angles identified as an outlier by Mogul will be highlighted in the graph. For rings, the root-mean-square deviation (RMSD) between the ring in question and similar rings identified by Mogul is calculated over all ring torsion angles. If the average RMSD is greater than 60 degrees and the minimal RMSD between the ring in question and any Mogul-identified rings is also greater than 60 degrees, then that ring is considered an outlier. The outliers are highlighted in purple. The color gray indicates Mogul did not find sufficient equivalents in the CSD to analyse the geometry.









5.7 Other polymers [i](#)

There are no such residues in this entry.

5.8 Polymer linkage issues [i](#)

There are no chain breaks in this entry.

6 Fit of model and data

6.1 Protein, DNA and RNA chains

In the following table, the column labelled ‘#RSRZ> 2’ contains the number (and percentage) of RSRZ outliers, followed by percent RSRZ outliers for the chain as percentile scores relative to all X-ray entries and entries of similar resolution. The OWAB column contains the minimum, median, 95th percentile and maximum values of the occupancy-weighted average B-factor per residue. The column labelled ‘Q< 0.9’ lists the number of (and percentage) of residues with an average occupancy less than 0.9.

Mol	Chain	Analysed	<RSRZ>	#RSRZ>2	OWAB(Å ²)	Q<0.9
1	A	407/422 (96%)	0.90	62 (15%) 2 3	20, 44, 87, 111	0
1	B	411/422 (97%)	0.40	27 (6%) 18 26	20, 32, 55, 75	0
All	All	818/844 (96%)	0.65	89 (10%) 5 9	20, 37, 79, 111	0

All (89) RSRZ outliers are listed below:

Mol	Chain	Res	Type	RSRZ
1	B	300	PHE	7.5
1	B	348	VAL	6.7
1	A	716	TRP	6.3
1	A	355	PHE	6.1
1	A	488	PRO	5.9
1	A	715	VAL	5.9
1	A	713	THR	4.6
1	A	352	ASP	4.5
1	A	351	LYS	4.5
1	A	391	THR	4.4
1	A	507	GLN	4.4
1	A	506	ILE	4.2
1	A	678	TRP	4.1
1	B	619	ARG	4.0
1	A	551	PHE	3.9
1	B	718	GLY	3.7
1	A	491	SER	3.7
1	A	490	GLY	3.6
1	A	392	SER	3.6
1	A	712	ASN	3.6
1	A	679	ILE	3.6
1	A	677	VAL	3.5
1	A	350	THR	3.5
1	A	680	VAL	3.5

Continued on next page...

Continued from previous page...

Mol	Chain	Res	Type	RSRZ
1	A	321	THR	3.5
1	B	350	THR	3.4
1	A	567	VAL	3.4
1	A	714	HIS	3.2
1	A	593	ILE	3.2
1	A	300	PHE	3.2
1	B	616	LEU	3.1
1	B	677	VAL	3.0
1	B	611	ALA	3.0
1	A	479	LEU	3.0
1	A	393	THR	3.0
1	B	567	VAL	2.9
1	A	508	GLN	2.9
1	A	385	ASN	2.9
1	A	469	LYS	2.9
1	A	299	ARG	2.8
1	B	691	PHE	2.8
1	B	299	ARG	2.8
1	A	486	LYS	2.8
1	A	676	TRP	2.8
1	B	321	THR	2.8
1	A	390	SER	2.8
1	A	489	ASP	2.7
1	A	386	LYS	2.7
1	B	310	VAL	2.7
1	B	715	VAL	2.7
1	A	503	GLU	2.7
1	A	511	LYS	2.7
1	B	679	ILE	2.6
1	A	561	TRP	2.5
1	B	620	LYS	2.5
1	A	674	ALA	2.5
1	B	353	GLN	2.5
1	A	617	ASP	2.5
1	A	389	GLU	2.5
1	A	480	ILE	2.5
1	A	353	GLN	2.4
1	B	678	TRP	2.4
1	A	667	ARG	2.4
1	B	615	ASP	2.4
1	A	514	ARG	2.4
1	A	619	ARG	2.4

Continued on next page...

Continued from previous page...

Mol	Chain	Res	Type	RSRZ
1	A	388	ILE	2.4
1	A	588	TYR	2.4
1	A	415	CYS	2.4
1	B	680	VAL	2.4
1	A	682	PRO	2.3
1	A	509	GLY	2.3
1	A	504	ILE	2.3
1	B	302	LYS	2.2
1	B	561	TRP	2.2
1	B	562	TYR	2.2
1	B	352	ASP	2.1
1	A	487	GLN	2.1
1	A	609	GLU	2.1
1	B	416	VAL	2.1
1	A	370	LYS	2.1
1	A	591	THR	2.1
1	A	505	CYS	2.1
1	A	594	GLY	2.1
1	A	552	ASP	2.0
1	A	322	LEU	2.0
1	A	409	TRP	2.0
1	B	591	THR	2.0
1	B	667	ARG	2.0

6.2 Non-standard residues in protein, DNA, RNA chains [i](#)

There are no non-standard protein/DNA/RNA residues in this entry.

6.3 Carbohydrates [i](#)

There are no carbohydrates in this entry.

6.4 Ligands [i](#)

In the following table, the Atoms column lists the number of modelled atoms in the group and the number defined in the chemical component dictionary. The B-factors column lists the minimum, median, 95th percentile and maximum values of B factors of atoms in the group. The column labelled 'Q< 0.9' lists the number of atoms with occupancy less than 0.9.

Continued on next page...

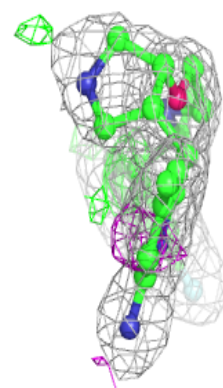
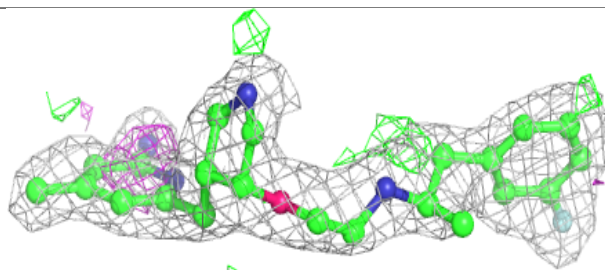
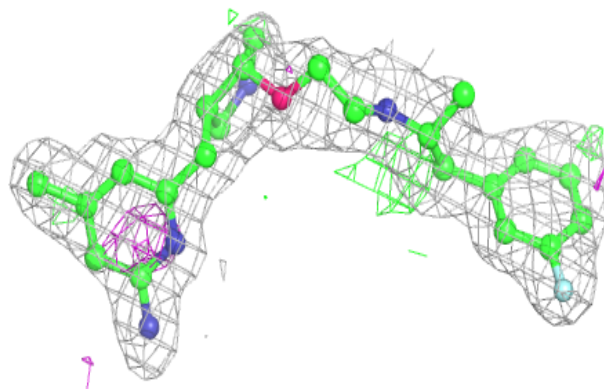
Continued from previous page...

Mol	Type	Chain	Res	Atoms	RSCC	RSR	B-factors(\AA^2)	Q<0.9
4	X2E	A	805	28/28	0.86	0.22	28,37,39,41	0
4	X2E	B	805	28/28	0.92	0.17	26,30,33,37	0
5	ACT	A	860	4/4	0.94	0.19	49,50,51,52	0
3	H4B	B	760	17/17	0.96	0.18	19,23,27,27	0
5	ACT	B	860	4/4	0.96	0.11	33,36,37,38	0
3	H4B	A	760	17/17	0.96	0.18	20,24,27,29	0
2	HEM	A	750	43/43	0.97	0.21	21,25,31,34	0
2	HEM	B	750	43/43	0.98	0.17	16,21,28,33	0
6	ZN	A	900	1/1	0.99	0.09	28,28,28,28	0

The following is a graphical depiction of the model fit to experimental electron density of all instances of the Ligand of Interest. In addition, ligands with molecular weight > 250 and outliers as shown on the geometry validation Tables will also be included. Each fit is shown from different orientation to approximate a three-dimensional view.

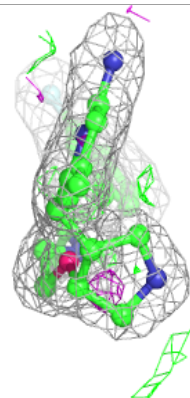
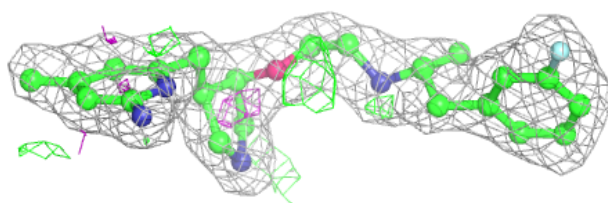
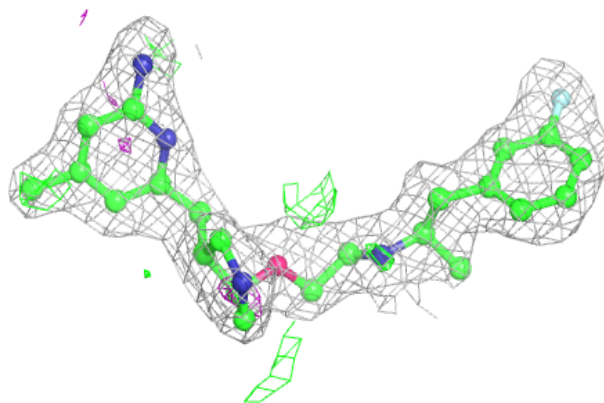
Electron density around X2E A 805:

2mF_o-DF_c (at 0.7 rmsd) in gray
mF_o-DF_c (at 3 rmsd) in purple (negative)
and green (positive)



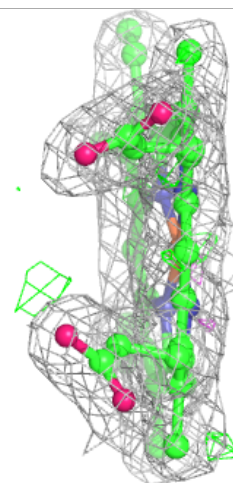
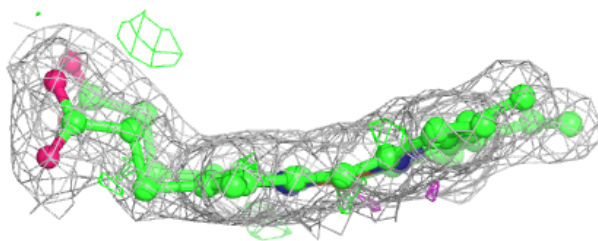
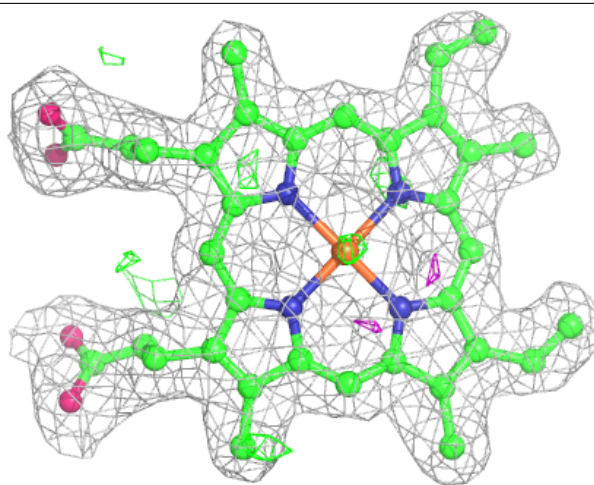
Electron density around X2E B 805:

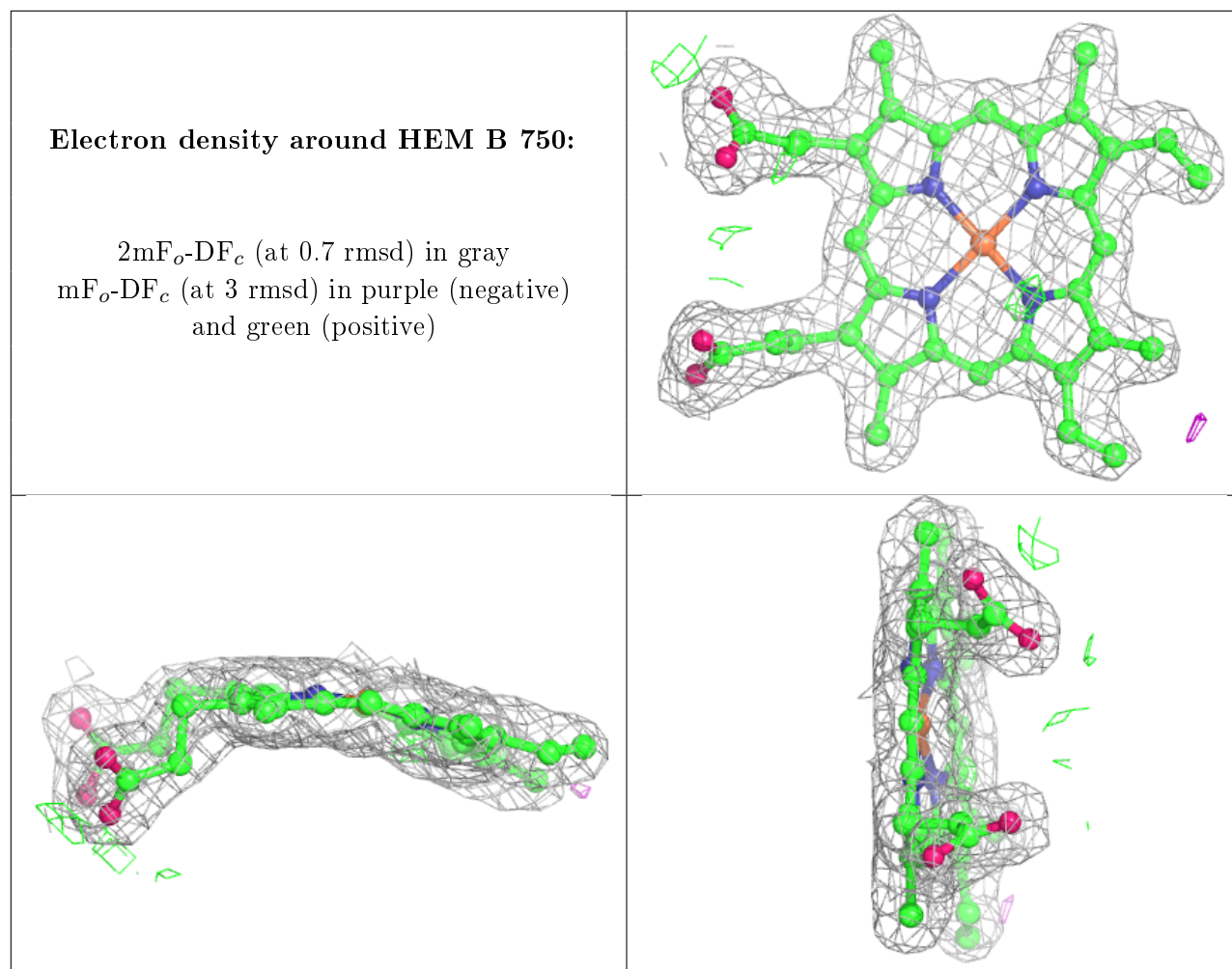
$2mF_o-DF_c$ (at 0.7 rmsd) in gray
 mF_o-DF_c (at 3 rmsd) in purple (negative)
and green (positive)



Electron density around HEM A 750:

$2mF_o-DF_c$ (at 0.7 rmsd) in gray
 mF_o-DF_c (at 3 rmsd) in purple (negative)
and green (positive)





6.5 Other polymers ⓘ

There are no such residues in this entry.