



Full wwPDB X-ray Structure Validation Report ⓘ

May 23, 2020 – 03:01 pm BST

PDB ID : 2RTJ
Title : STREPTAVIDIN-GLYCOURIL COMPLEX, PH 2.50, SPACE GROUP I4122
Authors : Katz, B.A.
Deposited on : 1997-09-11
Resolution : 1.40 Å(reported)

This is a Full wwPDB X-ray Structure Validation Report for a publicly released PDB entry.

We welcome your comments at validation@mail.wwpdb.org

A user guide is available at

<https://www.wwpdb.org/validation/2017/XrayValidationReportHelp>

with specific help available everywhere you see the ⓘ symbol.

The following versions of software and data (see [references ⓘ](#)) were used in the production of this report:

MolProbity : 4.02b-467
Mogul : 1.8.5 (274361), CSD as541be (2020)
Xtriage (Phenix) : 1.13
EDS : 2.11
Percentile statistics : 20191225.v01 (using entries in the PDB archive December 25th 2019)
Refmac : 5.8.0158
CCP4 : 7.0.044 (Gargrove)
Ideal geometry (proteins) : Engh & Huber (2001)
Ideal geometry (DNA, RNA) : Parkinson et al. (1996)
Validation Pipeline (wwPDB-VP) : 2.11

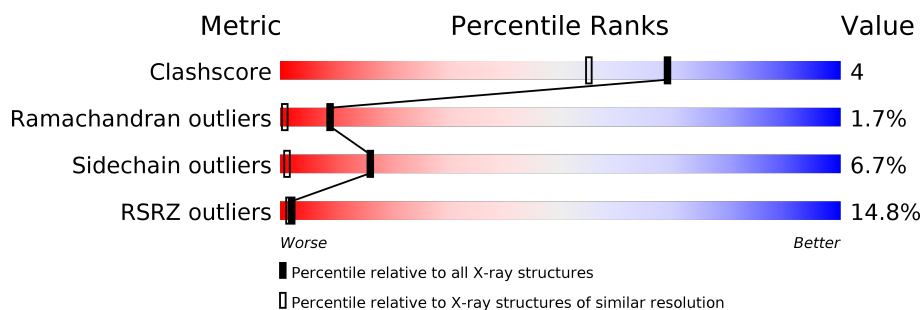
1 Overall quality at a glance

The following experimental techniques were used to determine the structure:

X-RAY DIFFRACTION

The reported resolution of this entry is 1.40 Å.

Percentile scores (ranging between 0-100) for global validation metrics of the entry are shown in the following graphic. The table shows the number of entries on which the scores are based.



Metric	Whole archive (#Entries)	Similar resolution (#Entries, resolution range(Å))
Clashscore	141614	1812 (1.40-1.40)
Ramachandran outliers	138981	1763 (1.40-1.40)
Sidechain outliers	138945	1762 (1.40-1.40)
RSRZ outliers	127900	1674 (1.40-1.40)

The table below summarises the geometric issues observed across the polymeric chains and their fit to the electron density. The red, orange, yellow and green segments on the lower bar indicate the fraction of residues that contain outliers for ≥ 3 , 2, 1 and 0 types of geometric quality criteria respectively. A grey segment represents the fraction of residues that are not modelled. The numeric value for each fraction is indicated below the corresponding segment, with a dot representing fractions $\leq 5\%$. The upper red bar (where present) indicates the fraction of residues that have poor fit to the electron density. The numeric value is given above the bar.

Mol	Chain	Length	Quality of chain
1	A	135	

The following table lists non-polymeric compounds, carbohydrate monomers and non-standard residues in protein, DNA, RNA chains that are outliers for geometric or electron-density-fit criteria:

Mol	Type	Chain	Res	Chirality	Geometry	Clashes	Electron density
3	FMT	A	301[B]	-	-	X	-

2 Entry composition [i](#)

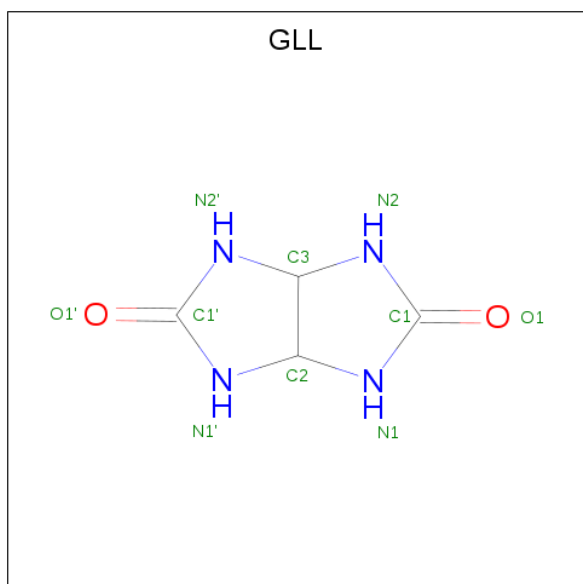
There are 4 unique types of molecules in this entry. The entry contains 2138 atoms, of which 1058 are hydrogens and 0 are deuteriums.

In the tables below, the ZeroOcc column contains the number of atoms modelled with zero occupancy, the AltConf column contains the number of residues with at least one atom in alternate conformation and the Trace column contains the number of residues modelled with at most 2 atoms.

- Molecule 1 is a protein called STREPTAVIDIN.

Mol	Chain	Residues	Atoms					ZeroOcc	AltConf	Trace
			Total	C	H	N	O			
1	A	123	1981	639	964	173	205	81	16	0

- Molecule 2 is GLYCOLURIL (three-letter code: GLL) (formula: $C_4H_6N_4O_2$).



Mol	Chain	Residues	Atoms					ZeroOcc	AltConf
			Total	C	H	N	O		
2	A	1	16	4	6	4	2	0	0

- Molecule 3 is FORMIC ACID (three-letter code: FMT) (formula: CH_2O_2).



Mol	Chain	Residues	Atoms			ZeroOcc	AltConf
3	A	1	Total	C	O	0	1
			9	3	6		

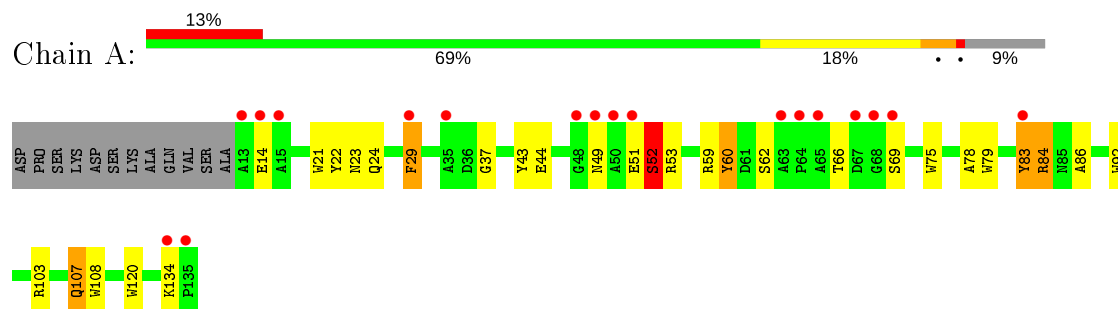
- Molecule 4 is water.

Mol	Chain	Residues	Atoms			ZeroOcc	AltConf
4	A	44	Total	H	O	0	7
			132	88	44		

3 Residue-property plots [i](#)

These plots are drawn for all protein, RNA and DNA chains in the entry. The first graphic for a chain summarises the proportions of the various outlier classes displayed in the second graphic. The second graphic shows the sequence view annotated by issues in geometry and electron density. Residues are color-coded according to the number of geometric quality criteria for which they contain at least one outlier: green = 0, yellow = 1, orange = 2 and red = 3 or more. A red dot above a residue indicates a poor fit to the electron density ($RSRZ > 2$). Stretches of 2 or more consecutive residues without any outlier are shown as a green connector. Residues present in the sample, but not in the model, are shown in grey.

• Molecule 1: STREPTAVIDIN



4 Data and refinement statistics

Property	Value	Source
Space group	I 41 2 2	Depositor
Cell constants a, b, c, α , β , γ	57.87Å 57.87Å 174.32Å 90.00° 90.00° 90.00°	Depositor
Resolution (Å)	(Not available) – 1.40 27.46 – 1.40	Depositor EDS
% Data completeness (in resolution range)	82.0 ((Not available)-1.40) 77.8 (27.46-1.40)	Depositor EDS
R_{merge}	0.05	Depositor
R_{sym}	(Not available)	Depositor
$\langle I/\sigma(I) \rangle$ ¹	1.22 (at 1.40Å)	Xtriage
Refinement program	X-PLOR	Depositor
R, R_{free}	0.206 , 0.221 0.207 , (Not available)	Depositor DCC
R_{free} test set	No test flags present.	wwPDB-VP
Wilson B-factor (Å ²)	16.8	Xtriage
Anisotropy	0.001	Xtriage
Bulk solvent k_{sol} (e/Å ³), B_{sol} (Å ²)	0.31 , 72.9	EDS
L-test for twinning ²	$\langle L \rangle = 0.49$, $\langle L^2 \rangle = 0.32$	Xtriage
Estimated twinning fraction	No twinning to report.	Xtriage
F_o, F_c correlation	0.96	EDS
Total number of atoms	2138	wwPDB-VP
Average B, all atoms (Å ²)	26.0	wwPDB-VP

Xtriage's analysis on translational NCS is as follows: *The largest off-origin peak in the Patterson function is 9.78% of the height of the origin peak. No significant pseudotranslation is detected.*

¹Intensities estimated from amplitudes.

²Theoretical values of $\langle |L| \rangle$, $\langle L^2 \rangle$ for acentric reflections are 0.5, 0.333 respectively for untwinned datasets, and 0.375, 0.2 for perfectly twinned datasets.

5 Model quality

5.1 Standard geometry

Bond lengths and bond angles in the following residue types are not validated in this section: FMT, GLL

The Z score for a bond length (or angle) is the number of standard deviations the observed value is removed from the expected value. A bond length (or angle) with $|Z| > 5$ is considered an outlier worth inspection. RMSZ is the root-mean-square of all Z scores of the bond lengths (or angles).

Mol	Chain	Bond lengths		Bond angles	
		RMSZ	$\# Z > 5$	RMSZ	$\# Z > 5$
1	A	1.41	2/1068 (0.2%)	1.82	37/1460 (2.5%)

Chiral center outliers are detected by calculating the chiral volume of a chiral center and verifying if the center is modelled as a planar moiety or with the opposite hand. A planarity outlier is detected by checking planarity of atoms in a peptide group, atoms in a mainchain group or atoms of a sidechain that are expected to be planar.

Mol	Chain	#Chirality outliers	#Planarity outliers
1	A	0	1

All (2) bond length outliers are listed below:

Mol	Chain	Res	Type	Atoms	Z	Observed(Å)	Ideal(Å)
1	A	23	ASN	C-N	-7.76	1.16	1.34
1	A	52	SER	CA-CB	5.00	1.60	1.52

All (37) bond angle outliers are listed below:

Mol	Chain	Res	Type	Atoms	Z	Observed(°)	Ideal(°)
1	A	79	TRP	CD1-NE1-CE2	9.76	117.78	109.00
1	A	92	TRP	CD1-NE1-CE2	9.72	117.75	109.00
1	A	120	TRP	CD1-NE1-CE2	9.47	117.52	109.00
1	A	21	TRP	NE1-CE2-CZ2	9.03	140.33	130.40
1	A	120	TRP	NE1-CE2-CZ2	8.91	140.21	130.40
1	A	75	TRP	CD1-NE1-CE2	8.89	117.00	109.00
1	A	21	TRP	CD1-NE1-CE2	8.87	116.99	109.00
1	A	59	ARG	NE-CZ-NH2	-8.79	115.91	120.30
1	A	108	TRP	CD1-NE1-CE2	8.52	116.67	109.00
1	A	103	ARG	NE-CZ-NH2	-8.40	116.10	120.30
1	A	92	TRP	CG-CD1-NE1	-7.79	102.31	110.10

Continued on next page...

Continued from previous page...

Mol	Chain	Res	Type	Atoms	Z	Observed(°)	Ideal(°)
1	A	75	TRP	CG-CD1-NE1	-7.29	102.81	110.10
1	A	59	ARG	NE-CZ-NH1	7.25	123.92	120.30
1	A	108	TRP	CG-CD1-NE1	-7.03	103.07	110.10
1	A	108	TRP	NE1-CE2-CZ2	7.00	138.10	130.40
1	A	21	TRP	CG-CD1-NE1	-6.84	103.26	110.10
1	A	120	TRP	NE1-CE2-CD2	-6.83	100.47	107.30
1	A	79	TRP	CG-CD1-NE1	-6.78	103.32	110.10
1	A	120	TRP	CG-CD1-NE1	-6.54	103.56	110.10
1	A	83	TYR	CB-CG-CD1	-6.36	117.18	121.00
1	A	92	TRP	NE1-CE2-CZ2	6.29	137.32	130.40
1	A	21	TRP	NE1-CE2-CD2	-6.13	101.17	107.30
1	A	75	TRP	NE1-CE2-CZ2	6.07	137.08	130.40
1	A	24	GLN	N-CA-CB	-6.05	99.72	110.60
1	A	84	ARG	NE-CZ-NH1	-5.89	117.35	120.30
1	A	21	TRP	CG-CD2-CE3	-5.88	128.61	133.90
1	A	78	ALA	N-CA-C	-5.87	95.14	111.00
1	A	92	TRP	NE1-CE2-CD2	-5.82	101.48	107.30
1	A	107[A]	GLN	N-CA-C	-5.79	95.38	111.00
1	A	107[B]	GLN	N-CA-C	-5.79	95.38	111.00
1	A	60[A]	TYR	CB-CG-CD2	-5.76	117.55	121.00
1	A	60[B]	TYR	CB-CG-CD2	-5.76	117.55	121.00
1	A	79	TRP	NE1-CE2-CD2	-5.71	101.59	107.30
1	A	53	ARG	NE-CZ-NH2	-5.53	117.54	120.30
1	A	108	TRP	NE1-CE2-CD2	-5.24	102.06	107.30
1	A	24	GLN	CB-CA-C	5.13	120.67	110.40
1	A	84	ARG	N-CA-CB	-5.08	101.45	110.60

There are no chirality outliers.

All (1) planarity outliers are listed below:

Mol	Chain	Res	Type	Group
1	A	84	ARG	Sidechain

5.2 Too-close contacts

In the following table, the Non-H and H(model) columns list the number of non-hydrogen atoms and hydrogen atoms in the chain respectively. The H(added) column lists the number of hydrogen atoms added and optimized by MolProbity. The Clashes column lists the number of clashes within the asymmetric unit, whereas Symm-Clashes lists symmetry related clashes.

Mol	Chain	Non-H	H(model)	H(added)	Clashes	Symm-Clashes
1	A	1017	964	946	7	0
2	A	10	6	6	0	0
3	A	9	0	3	2	0
4	A	44	88	0	0	16
All	All	1080	1058	955	7	16

The all-atom clashscore is defined as the number of clashes found per 1000 atoms (including hydrogen atoms). The all-atom clashscore for this structure is 4.

All (7) close contacts within the same asymmetric unit are listed below, sorted by their clash magnitude.

Atom-1	Atom-2	Interatomic distance (Å)	Clash overlap (Å)
1:A:86:ALA:HB1	3:A:301[B]:FMT:H	1.79	0.64
1:A:22:TYR:CG	1:A:134:LYS:HB3	2.38	0.59
1:A:83:TYR:CD1	1:A:83:TYR:N	2.79	0.49
1:A:29[A]:PHE:HB2	1:A:43:TYR:CD2	2.52	0.44
1:A:49:ASN:HB3	3:A:301[B]:FMT:H	2.00	0.43
1:A:51:GLU:O	1:A:52:SER:CB	2.67	0.43
1:A:37:GLY:HA2	1:A:60[A]:TYR:CE1	2.54	0.42

All (16) symmetry-related close contacts are listed below. The label for Atom-2 includes the symmetry operator and encoded unit-cell translations to be applied.

Atom-1	Atom-2	Interatomic distance (Å)	Clash overlap (Å)
4:A:305[C]:HOH:O	4:A:305[C]:HOH:O[15_555]	0.63	1.57
4:A:624[C]:HOH:O	4:A:624[C]:HOH:O[6_555]	0.80	1.40
4:A:546[C]:HOH:H2	4:A:546[C]:HOH:H2[10_655]	0.43	1.17
4:A:624[C]:HOH:H1	4:A:624[C]:HOH:H2[6_555]	0.56	1.04
4:A:546[C]:HOH:O	4:A:546[C]:HOH:H2[10_655]	0.57	1.03
4:A:624[C]:HOH:O	4:A:624[C]:HOH:H2[6_555]	0.87	0.73
4:A:305[C]:HOH:O	4:A:305[C]:HOH:H1[15_555]	0.89	0.71
4:A:624[C]:HOH:O	4:A:624[C]:HOH:H1[6_555]	0.93	0.67
4:A:558[C]:HOH:O	4:A:558[C]:HOH:H2[10_655]	0.94	0.66
4:A:546[C]:HOH:H1	4:A:546[C]:HOH:H2[10_655]	1.04	0.56
4:A:558[C]:HOH:O	4:A:558[C]:HOH:H1[10_655]	1.04	0.56
4:A:546[C]:HOH:O	4:A:546[C]:HOH:H1[10_655]	1.05	0.55
4:A:305[C]:HOH:O	4:A:305[C]:HOH:H2[15_555]	1.05	0.55
4:A:305[C]:HOH:H1	4:A:305[C]:HOH:H2[15_555]	1.13	0.47
4:A:558[C]:HOH:H1	4:A:558[C]:HOH:H1[10_655]	1.32	0.28
4:A:319:HOH:O	4:A:600:HOH:H1[15_555]	1.36	0.24

5.3 Torsion angles [i](#)

5.3.1 Protein backbone [i](#)

In the following table, the Percentiles column shows the percent Ramachandran outliers of the chain as a percentile score with respect to all X-ray entries followed by that with respect to entries of similar resolution.

The Analysed column shows the number of residues for which the backbone conformation was analysed, and the total number of residues.

Mol	Chain	Analysed	Favoured	Allowed	Outliers	Percentiles	
1	A	137/135 (102%)	131 (96%)	4 (3%)	2 (2%)	10	1

All (2) Ramachandran outliers are listed below:

Mol	Chain	Res	Type
1	A	14	GLU
1	A	52	SER

5.3.2 Protein sidechains [i](#)

In the following table, the Percentiles column shows the percent sidechain outliers of the chain as a percentile score with respect to all X-ray entries followed by that with respect to entries of similar resolution.

The Analysed column shows the number of residues for which the sidechain conformation was analysed, and the total number of residues.

Mol	Chain	Analysed	Rotameric	Outliers	Percentiles	
1	A	103/100 (103%)	92 (89%)	11 (11%)	6	0

All (11) residues with a non-rotameric sidechain are listed below:

Mol	Chain	Res	Type
1	A	29[A]	PHE
1	A	29[B]	PHE
1	A	44	GLU
1	A	62[A]	SER
1	A	62[B]	SER
1	A	66[A]	THR
1	A	66[B]	THR
1	A	69[A]	SER
1	A	69[B]	SER

Continued on next page...

Continued from previous page...

Mol	Chain	Res	Type
1	A	107[A]	GLN
1	A	107[B]	GLN

Some sidechains can be flipped to improve hydrogen bonding and reduce clashes. All (1) such sidechains are listed below:

Mol	Chain	Res	Type
1	A	105	ASN

5.3.3 RNA [i](#)

There are no RNA molecules in this entry.

5.4 Non-standard residues in protein, DNA, RNA chains [i](#)

There are no non-standard protein/DNA/RNA residues in this entry.

5.5 Carbohydrates [i](#)

There are no carbohydrates in this entry.

5.6 Ligand geometry [i](#)

4 ligands are modelled in this entry.

In the following table, the Counts columns list the number of bonds (or angles) for which Mogul statistics could be retrieved, the number of bonds (or angles) that are observed in the model and the number of bonds (or angles) that are defined in the Chemical Component Dictionary. The Link column lists molecule types, if any, to which the group is linked. The Z score for a bond length (or angle) is the number of standard deviations the observed value is removed from the expected value. A bond length (or angle) with $|Z| > 2$ is considered an outlier worth inspection. RMSZ is the root-mean-square of all Z scores of the bond lengths (or angles).

Mol	Type	Chain	Res	Link	Bond lengths			Bond angles		
					Counts	RMSZ	$\# Z > 2$	Counts	RMSZ	$\# Z > 2$
2	GLL	A	300	-	11,11,11	3.32	8 (72%)	16,16,16	1.99	3 (18%)
3	FMT	A	301[C]	-	0,2,2	0.00	-	0,1,1	0.00	-
3	FMT	A	301[A]	-	0,2,2	0.00	-	0,1,1	0.00	-
3	FMT	A	301[B]	-	0,2,2	0.00	-	0,1,1	0.00	-

In the following table, the Chirals column lists the number of chiral outliers, the number of chiral centers analysed, the number of these observed in the model and the number defined in the Chemical Component Dictionary. Similar counts are reported in the Torsion and Rings columns. '-' means no outliers of that kind were identified.

Mol	Type	Chain	Res	Link	Chirals	Torsions	Rings
2	GLL	A	300	-	-	-	0/2/2/2

All (8) bond length outliers are listed below:

Mol	Chain	Res	Type	Atoms	Z	Observed(Å)	Ideal(Å)
2	A	300	GLL	C3-N2'	4.83	1.50	1.44
2	A	300	GLL	C2-N1	4.58	1.50	1.44
2	A	300	GLL	C3-N2	4.50	1.49	1.44
2	A	300	GLL	C2-N1'	4.33	1.49	1.44
2	A	300	GLL	C1-N1	-3.08	1.30	1.35
2	A	300	GLL	C1-N2	-3.06	1.30	1.35
2	A	300	GLL	C1'-N1'	-3.00	1.30	1.35
2	A	300	GLL	C1'-N2'	-2.72	1.30	1.35

All (3) bond angle outliers are listed below:

Mol	Chain	Res	Type	Atoms	Z	Observed(°)	Ideal(°)
2	A	300	GLL	C2-C3-N2	-4.18	100.90	102.75
2	A	300	GLL	C3-C2-N1'	-3.94	101.00	102.75
2	A	300	GLL	N2'-C3-N2	3.28	116.90	114.38

There are no chirality outliers.

There are no torsion outliers.

There are no ring outliers.

1 monomer is involved in 2 short contacts:

Mol	Chain	Res	Type	Clashes	Symm-Clashes
3	A	301[B]	FMT	2	0

5.7 Other polymers [i](#)

There are no such residues in this entry.

5.8 Polymer linkage issues [i](#)

The following chains have linkage breaks:

Mol	Chain	Number of breaks
1	A	1

All chain breaks are listed below:

Model	Chain	Residue-1	Atom-1	Residue-2	Atom-2	Distance (Å)
1	A	23:ASN	C	24:GLN	N	1.16

6 Fit of model and data [i](#)

6.1 Protein, DNA and RNA chains [i](#)

In the following table, the column labelled ‘#RSRZ> 2’ contains the number (and percentage) of RSRZ outliers, followed by percent RSRZ outliers for the chain as percentile scores relative to all X-ray entries and entries of similar resolution. The OWAB column contains the minimum, median, 95th percentile and maximum values of the occupancy-weighted average B-factor per residue. The column labelled ‘Q< 0.9’ lists the number of (and percentage) of residues with an average occupancy less than 0.9.

Mol	Chain	Analysed	<RSRZ>	#RSRZ>2	OWAB(Å ²)	Q<0.9
1	A	122/135 (90%)	0.47	18 (14%) 2 1	13, 23, 41, 55	31 (25%)

All (18) RSRZ outliers are listed below:

Mol	Chain	Res	Type	RSRZ
1	A	135	PRO	7.9
1	A	15	ALA	6.7
1	A	65[A]	ALA	6.5
1	A	14	GLU	4.8
1	A	50	ALA	4.6
1	A	64[A]	PRO	4.0
1	A	68[A]	GLY	3.9
1	A	83	TYR	3.5
1	A	13	ALA	3.4
1	A	48	GLY	3.3
1	A	67[A]	ASP	3.0
1	A	51	GLU	2.5
1	A	69[A]	SER	2.4
1	A	63[A]	ALA	2.3
1	A	134	LYS	2.3
1	A	35	ALA	2.2
1	A	29[A]	PHE	2.2
1	A	49	ASN	2.1

6.2 Non-standard residues in protein, DNA, RNA chains [i](#)

There are no non-standard protein/DNA/RNA residues in this entry.

6.3 Carbohydrates [i](#)

There are no carbohydrates in this entry.

6.4 Ligands [i](#)

In the following table, the Atoms column lists the number of modelled atoms in the group and the number defined in the chemical component dictionary. The B-factors column lists the minimum, median, 95th percentile and maximum values of B factors of atoms in the group. The column labelled 'Q< 0.9' lists the number of atoms with occupancy less than 0.9.

Mol	Type	Chain	Res	Atoms	RSCC	RSR	B-factors(Å ²)	Q<0.9
3	FMT	A	301[C]	3/3	0.67	0.23	50,50,52,52	3
3	FMT	A	301[A]	3/3	0.67	0.23	52,52,52,54	3
3	FMT	A	301[B]	3/3	0.67	0.23	40,40,41,42	3
2	GLL	A	300	10/10	0.96	0.06	19,21,22,23	0

6.5 Other polymers [i](#)

There are no such residues in this entry.