



Full wwPDB X-ray Structure Validation Report ⓘ

Aug 9, 2020 – 09:34 AM BST

PDB ID : 3RUM
Title : New strategy to analyze structures of glycopeptide antibiotic-target complexes
Authors : Economou, N.J.; Weeks, S.D.; Grasty, K.C.; Nahoum, V.; Loll, P.J.
Deposited on : 2011-05-05
Resolution : 1.85 Å(reported)

This is a Full wwPDB X-ray Structure Validation Report for a publicly released PDB entry.

We welcome your comments at validation@mail.wwpdb.org

A user guide is available at

<https://www.wwpdb.org/validation/2017/XrayValidationReportHelp>

with specific help available everywhere you see the ⓘ symbol.

The following versions of software and data (see [references ⓘ](#)) were used in the production of this report:

MolProbity : 4.02b-467
Mogul : 1.8.5 (274361), CSD as541be (2020)
Xtriage (Phenix) : 1.13
EDS : 2.13.1
Percentile statistics : 20191225.v01 (using entries in the PDB archive December 25th 2019)
Refmac : 5.8.0158
CCP4 : 7.0.044 (Gargrove)
Ideal geometry (proteins) : Engh & Huber (2001)
Ideal geometry (DNA, RNA) : Parkinson et al. (1996)
Validation Pipeline (wwPDB-VP) : 2.13.1

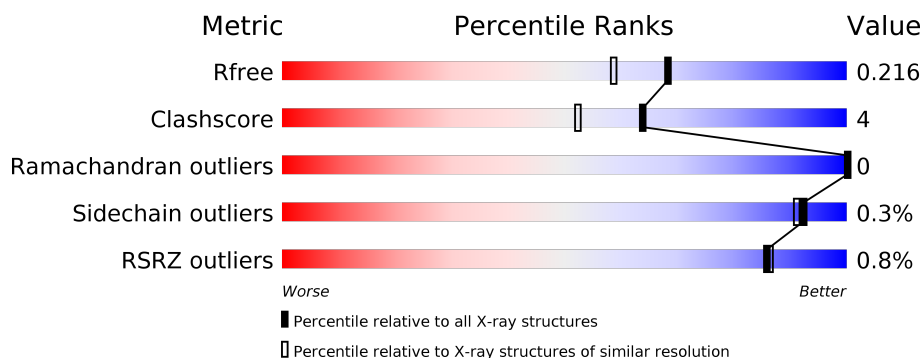
1 Overall quality at a glance

The following experimental techniques were used to determine the structure:

X-RAY DIFFRACTION

The reported resolution of this entry is 1.85 Å.

Percentile scores (ranging between 0-100) for global validation metrics of the entry are shown in the following graphic. The table shows the number of entries on which the scores are based.



Metric	Whole archive (#Entries)	Similar resolution (#Entries, resolution range(Å))
R_{free}	130704	2469 (1.86-1.86)
Clashscore	141614	2625 (1.86-1.86)
Ramachandran outliers	138981	2592 (1.86-1.86)
Sidechain outliers	138945	2592 (1.86-1.86)
RSRZ outliers	127900	2436 (1.86-1.86)

The table below summarises the geometric issues observed across the polymeric chains and their fit to the electron density. The red, orange, yellow and green segments on the lower bar indicate the fraction of residues that contain outliers for ≥ 3 , 2, 1 and 0 types of geometric quality criteria respectively. A grey segment represents the fraction of residues that are not modelled. The numeric value for each fraction is indicated below the corresponding segment, with a dot representing fractions $\leq 5\%$. The upper red bar (where present) indicates the fraction of residues that have poor fit to the electron density. The numeric value is given above the bar.

Mol	Chain	Length	Quality of chain
1	A	378	<div> <div style="width: 100%; height: 10px; background: linear-gradient(to right, red 1%, orange 1%, yellow 92%, green 8%);"></div> <div style="display: flex; justify-content: space-between; width: 100%;"> % 92% 8% </div> </div>
2	B	7	<div> <div style="width: 100%; height: 10px; background: linear-gradient(to right, yellow 86%, orange 14%);"></div> <div style="display: flex; justify-content: space-between; width: 100%;"> 86% 14% </div> </div>
2	C	7	<div> <div style="width: 100%; height: 10px; background: linear-gradient(to right, yellow 57%, orange 43%);"></div> <div style="display: flex; justify-content: space-between; width: 100%;"> 57% 43% </div> </div>
3	D	4	<div> <div style="width: 100%; height: 10px; background: linear-gradient(to right, yellow 100%);"></div> <div style="display: flex; justify-content: space-between; width: 100%;"> 100% </div> </div>
3	E	4	<div> <div style="width: 100%; height: 10px; background: linear-gradient(to right, green 25%, yellow 75%);"></div> <div style="display: flex; justify-content: space-between; width: 100%;"> 25% 75% </div> </div>
4	F	2	<div> <div style="width: 100%; height: 10px; background: linear-gradient(to right, yellow 100%);"></div> <div style="display: flex; justify-content: space-between; width: 100%;"> 100% </div> </div>

2 Entry composition

There are 9 unique types of molecules in this entry. The entry contains 3645 atoms, of which 0 are hydrogens and 0 are deuteriums.

In the tables below, the ZeroOcc column contains the number of atoms modelled with zero occupancy, the AltConf column contains the number of residues with at least one atom in alternate conformation and the Trace column contains the number of residues modelled with at most 2 atoms.

- Molecule 1 is a protein called Maltose-binding periplasmic protein.

Mol	Chain	Residues	Atoms					ZeroOcc	AltConf	Trace
1	A	378	Total	C	N	O	S	0	0	0
			2913	1872	475	558	8			

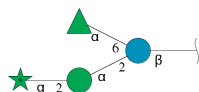
There are 12 discrepancies between the modelled and reference sequences:

Chain	Residue	Modelled	Actual	Comment	Reference
A	1	MET	-	initiating methionine	UNP P0AEX9
A	368	ASN	-	SEE REMARK 999	UNP P0AEX9
A	369	ALA	-	SEE REMARK 999	UNP P0AEX9
A	370	ALA	-	SEE REMARK 999	UNP P0AEX9
A	371	ALA	-	SEE REMARK 999	UNP P0AEX9
A	372	ALA	-	SEE REMARK 999	UNP P0AEX9
A	373	ALA	-	SEE REMARK 999	UNP P0AEX9
A	374	GLY	-	SEE REMARK 999	UNP P0AEX9
A	375	CCS	-	SEE REMARK 999	UNP P0AEX9
A	376	LYS	-	SEE REMARK 999	UNP P0AEX9
A	377	DAL	-	SEE REMARK 999	UNP P0AEX9
A	378	DAL	-	SEE REMARK 999	UNP P0AEX9

- Molecule 2 is a protein called Ristocetin.

Mol	Chain	Residues	Atoms				ZeroOcc	AltConf	Trace
2	B	7	Total	C	N	O	0	0	0
			86	60	7	19			
2	C	7	Total	C	N	O	0	0	0
			86	60	7	19			

- Molecule 3 is an oligosaccharide called alpha-D-arabinofuranose-(1-2)-alpha-D-mannopyranose-(1-2)-[alpha-L-rhamnopyranose-(1-6)]beta-D-glucopyranose.



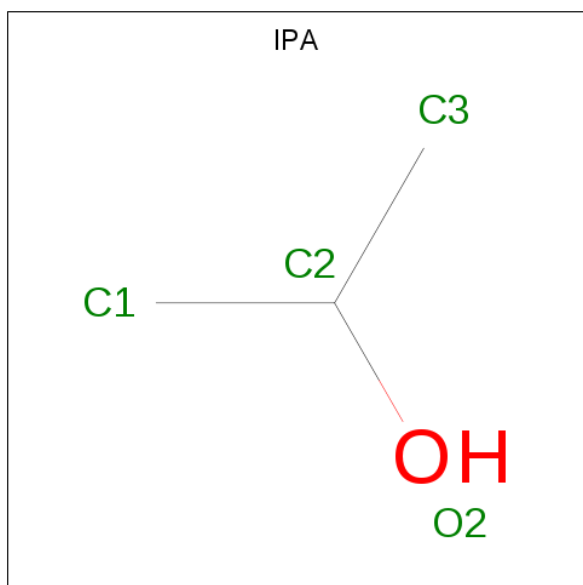
Mol	Chain	Residues	Atoms			ZeroOcc	AltConf	Trace
3	D	4	Total	C	O	0	0	0
			41	23	18			
3	E	4	Total	C	O	0	0	0
			41	23	18			

- Molecule 4 is an oligosaccharide called alpha-D-glucopyranose-(1-4)-alpha-D-glucopyranose.



Mol	Chain	Residues	Atoms			ZeroOcc	AltConf	Trace
4	F	2	Total	C	O	0	0	0
			23	12	11			

- Molecule 5 is ISOPROPYL ALCOHOL (three-letter code: IPA) (formula: C₃H₈O).



Mol	Chain	Residues	Atoms			ZeroOcc	AltConf
5	A	1	Total	C	O	0	0
			4	3	1		
5	A	1	Total	C	O	0	0
			4	3	1		

Continued on next page...

Continued from previous page...

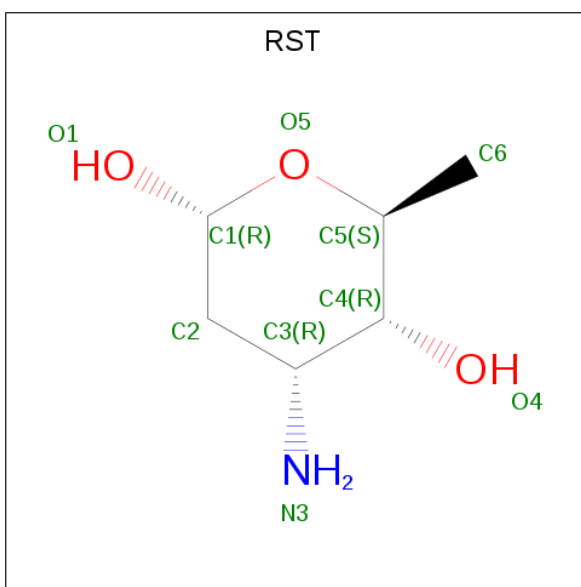
Mol	Chain	Residues	Atoms			ZeroOcc	AltConf
5	A	1	Total	C	O	0	0
			4	3	1		

- Molecule 6 is SULFATE ION (three-letter code: SO4) (formula: O₄S).



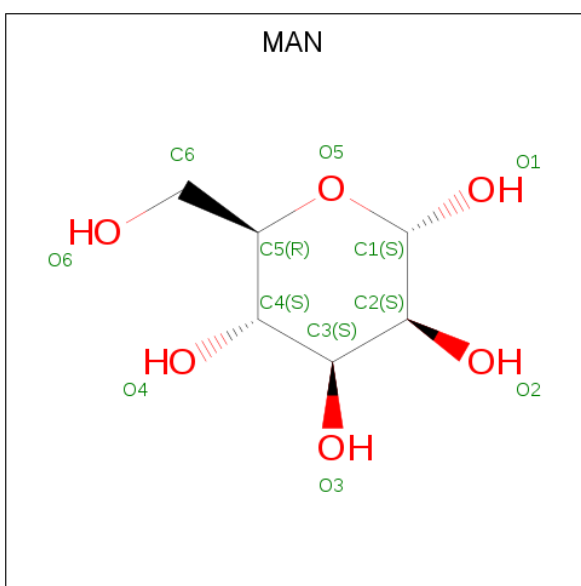
Mol	Chain	Residues	Atoms			ZeroOcc	AltConf
6	A	1	Total	O	S	0	0
			5	4	1		
6	A	1	Total	O	S	0	0
			5	4	1		
6	A	1	Total	O	S	0	0
			5	4	1		
6	C	1	Total	O	S	0	0
			5	4	1		

- Molecule 7 is 3-amino-2,3,6-trideoxy-alpha-L-ribo-hexopyranose (three-letter code: RST) (formula: C₆H₁₃NO₃).



Mol	Chain	Residues	Atoms				ZeroOcc	AltConf
7	B	1	Total	C	N	O	0	0
			9	6	1	2		
7	C	1	Total	C	N	O	0	0
			9	6	1	2		

- Molecule 8 is alpha-D-mannopyranose (three-letter code: MAN) (formula: C₆H₁₂O₆).



Mol	Chain	Residues	Atoms			ZeroOcc	AltConf
8	B	1	Total	C	O	0	0
			11	6	5		
8	C	1	Total	C	O	0	0
			11	6	5		

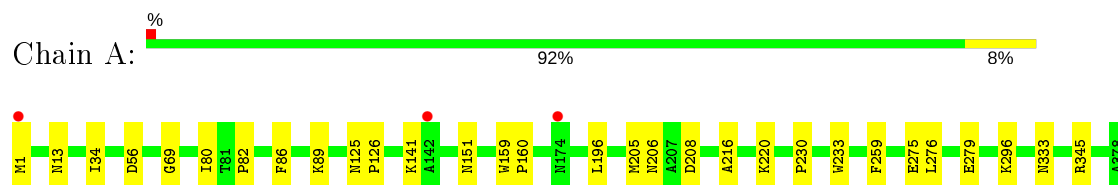
- Molecule 9 is water.

Mol	Chain	Residues	Atoms		ZeroOcc	AltConf
9	A	345	Total 345	O 345	0	0
9	B	16	Total 16	O 16	0	0
9	C	22	Total 22	O 22	0	0

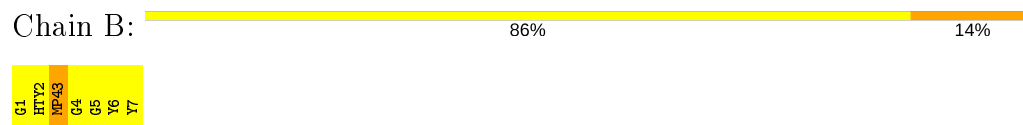
3 Residue-property plots

These plots are drawn for all protein, RNA, DNA and oligosaccharide chains in the entry. The first graphic for a chain summarises the proportions of the various outlier classes displayed in the second graphic. The second graphic shows the sequence view annotated by issues in geometry and electron density. Residues are color-coded according to the number of geometric quality criteria for which they contain at least one outlier: green = 0, yellow = 1, orange = 2 and red = 3 or more. A red dot above a residue indicates a poor fit to the electron density ($RSRZ > 2$). Stretches of 2 or more consecutive residues without any outlier are shown as a green connector. Residues present in the sample, but not in the model, are shown in grey.

- Molecule 1: Maltose-binding periplasmic protein



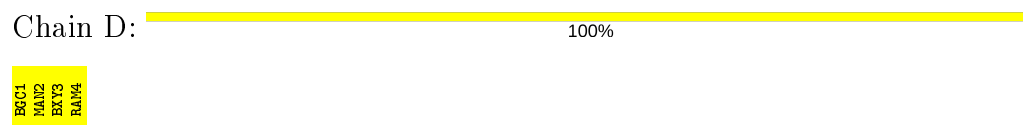
- Molecule 2: Ristocetin



- Molecule 2: Ristocetin



- Molecule 3: alpha-D-arabinofuranose-(1-2)-alpha-D-mannopyranose-(1-2)-[alpha-L-rhamnopyranose-(1-6)]beta-D-glucopyranose



- Molecule 3: alpha-D-arabinofuranose-(1-2)-alpha-D-mannopyranose-(1-2)-[alpha-L-rhamnopyranose-(1-6)]beta-D-glucopyranose



- Molecule 4: alpha-D-glucopyranose-(1-4)-alpha-D-glucopyranose

Chain F:

100%

GLA1
GLA2

4 Data and refinement statistics

Property	Value	Source
Space group	P 21 21 21	Depositor
Cell constants a, b, c, α , β , γ	57.83Å 75.00Å 90.78Å 90.00° 90.00° 90.00°	Depositor
Resolution (Å)	19.42 – 1.85 19.42 – 1.85	Depositor EDS
% Data completeness (in resolution range)	96.6 (19.42-1.85) 96.6 (19.42-1.85)	Depositor EDS
R_{merge}	(Not available)	Depositor
R_{sym}	(Not available)	Depositor
$\langle I/\sigma(I) \rangle$ ¹	2.32 (at 1.85Å)	Xtriage
Refinement program	PHENIX 1.6.2 _432	Depositor
R, R_{free}	0.176 , 0.219 0.173 , 0.216	Depositor DCC
R_{free} test set	1702 reflections (5.13%)	wwPDB-VP
Wilson B-factor (Å ²)	20.1	Xtriage
Anisotropy	0.387	Xtriage
Bulk solvent k_{sol} (e/Å ³), B_{sol} (Å ²)	0.36 , 44.7	EDS
L-test for twinning ²	$\langle L \rangle = 0.48$, $\langle L^2 \rangle = 0.31$	Xtriage
Estimated twinning fraction	No twinning to report.	Xtriage
F_o, F_c correlation	0.96	EDS
Total number of atoms	3645	wwPDB-VP
Average B, all atoms (Å ²)	23.0	wwPDB-VP

Xtriage's analysis on translational NCS is as follows: *The largest off-origin peak in the Patterson function is 5.71% of the height of the origin peak. No significant pseudotranslation is detected.*

¹Intensities estimated from amplitudes.

²Theoretical values of $\langle |L| \rangle$, $\langle L^2 \rangle$ for acentric reflections are 0.5, 0.333 respectively for untwinned datasets, and 0.375, 0.2 for perfectly twinned datasets.

5 Model quality

5.1 Standard geometry

Bond lengths and bond angles in the following residue types are not validated in this section: BXY, BGC, GHP, DAL, RAM, MDF, CCS, RST, MP4, IPA, SO4, GLC, OMX, HTY, MAN

The Z score for a bond length (or angle) is the number of standard deviations the observed value is removed from the expected value. A bond length (or angle) with $|Z| > 5$ is considered an outlier worth inspection. RMSZ is the root-mean-square of all Z scores of the bond lengths (or angles).

Mol	Chain	Bond lengths		Bond angles	
		RMSZ	$\# Z > 5$	RMSZ	$\# Z > 5$
1	A	0.35	0/2964	0.50	0/4021

There are no bond length outliers.

There are no bond angle outliers.

There are no chirality outliers.

There are no planarity outliers.

5.2 Too-close contacts

In the following table, the Non-H and H(model) columns list the number of non-hydrogen atoms and hydrogen atoms in the chain respectively. The H(added) column lists the number of hydrogen atoms added and optimized by MolProbity. The Clashes column lists the number of clashes within the asymmetric unit, whereas Symm-Clashes lists symmetry related clashes.

Mol	Chain	Non-H	H(model)	H(added)	Clashes	Symm-Clashes
1	A	2913	0	2883	21	0
2	B	86	0	39	2	0
2	C	86	0	40	4	0
3	D	41	0	35	0	0
3	E	41	0	35	0	0
4	F	23	0	21	0	0
5	A	12	0	24	5	0
6	A	15	0	0	0	0
6	C	5	0	0	0	0
7	B	9	0	11	0	0
7	C	9	0	11	0	0
8	B	11	0	10	0	0
8	C	11	0	10	0	0

Continued on next page...

Continued from previous page...

Mol	Chain	Non-H	H(model)	H(added)	Clashes	Symm-Clashes
9	A	345	0	0	2	0
9	B	16	0	0	0	0
9	C	22	0	0	1	0
All	All	3645	0	3119	27	0

The all-atom clashscore is defined as the number of clashes found per 1000 atoms (including hydrogen atoms). The all-atom clashscore for this structure is 4.

All (27) close contacts within the same asymmetric unit are listed below, sorted by their clash magnitude.

Atom-1	Atom-2	Interatomic distance (Å)	Clash overlap (Å)
1:A:151:ASN:HD21	5:A:404:IPA:H33	1.42	0.83
1:A:206:ASN:HB2	5:A:402:IPA:H11	1.62	0.81
2:C:1:GHP:HA	9:C:217:HOH:O	2.01	0.60
1:A:34:ILE:HD13	1:A:276:LEU:HD13	1.85	0.57
2:C:1:GHP:C2	2:C:3:MP4:C6	2.84	0.55
1:A:69:GLY:HA3	1:A:333:ASN:O	2.09	0.53
1:A:13:ASN:HD21	5:A:403:IPA:H13	1.73	0.52
1:A:206:ASN:HD22	5:A:402:IPA:H12	1.76	0.49
2:C:1:GHP:C2	2:C:3:MP4:H6	2.42	0.49
1:A:206:ASN:HD22	5:A:402:IPA:C1	2.25	0.48
1:A:159:TRP:N	1:A:160:PRO:CD	2.77	0.47
2:B:1:GHP:C2	2:B:3:MP4:C6	2.93	0.46
1:A:34:ILE:HD11	1:A:276:LEU:HD22	1.99	0.45
1:A:296:LYS:HE3	9:A:587:HOH:O	2.17	0.45
2:B:1:GHP:C2	2:B:3:MP4:H6	2.46	0.45
1:A:86:PHE:O	1:A:89:LYS:HB2	2.17	0.44
1:A:216:ALA:O	1:A:220:LYS:HG3	2.18	0.43
2:C:5:GHP:C2	2:C:7:MDF:N	2.82	0.43
1:A:196:LEU:CD1	1:A:205:MET:HE1	2.48	0.43
1:A:345:ARG:HD3	9:A:732:HOH:O	2.19	0.42
1:A:275:GLU:O	1:A:279:GLU:HG2	2.18	0.42
1:A:141:LYS:HD3	1:A:141:LYS:HA	1.88	0.41
1:A:125:ASN:HA	1:A:126:PRO:HD2	1.95	0.41
1:A:1:MET:HG2	1:A:56:ASP:HB3	2.01	0.41
1:A:230:PRO:HA	1:A:233:TRP:CE2	2.56	0.41
1:A:206:ASN:OD1	1:A:208:ASP:OD1	2.38	0.41
1:A:80:ILE:HD12	1:A:82:PRO:HD3	2.02	0.41

There are no symmetry-related clashes.

5.3 Torsion angles [i](#)

5.3.1 Protein backbone [i](#)

In the following table, the Percentiles column shows the percent Ramachandran outliers of the chain as a percentile score with respect to all X-ray entries followed by that with respect to entries of similar resolution.

The Analysed column shows the number of residues for which the backbone conformation was analysed, and the total number of residues.

Mol	Chain	Analysed	Favoured	Allowed	Outliers	Percentiles	
1	A	374/378 (99%)	370 (99%)	4 (1%)	0	100	100

There are no Ramachandran outliers to report.

5.3.2 Protein sidechains [i](#)

In the following table, the Percentiles column shows the percent sidechain outliers of the chain as a percentile score with respect to all X-ray entries followed by that with respect to entries of similar resolution.

The Analysed column shows the number of residues for which the sidechain conformation was analysed, and the total number of residues.

Mol	Chain	Analysed	Rotameric	Outliers	Percentiles	
1	A	296/296 (100%)	295 (100%)	1 (0%)	92	91

All (1) residues with a non-rotameric sidechain are listed below:

Mol	Chain	Res	Type
1	A	259	PHE

Some sidechains can be flipped to improve hydrogen bonding and reduce clashes. All (2) such sidechains are listed below:

Mol	Chain	Res	Type
1	A	40	HIS
1	A	254	GLN

5.3.3 RNA [i](#)

There are no RNA molecules in this entry.

5.4 Non-standard residues in protein, DNA, RNA chains ⓘ

17 non-standard protein/DNA/RNA residues are modelled in this entry.

In the following table, the Counts columns list the number of bonds (or angles) for which Mogul statistics could be retrieved, the number of bonds (or angles) that are observed in the model and the number of bonds (or angles) that are defined in the Chemical Component Dictionary. The Link column lists molecule types, if any, to which the group is linked. The Z score for a bond length (or angle) is the number of standard deviations the observed value is removed from the expected value. A bond length (or angle) with $|Z| > 2$ is considered an outlier worth inspection. RMSZ is the root-mean-square of all Z scores of the bond lengths (or angles).

Mol	Type	Chain	Res	Link	Bond lengths			Bond angles		
					Counts	RMSZ	# $ Z > 2$	Counts	RMSZ	# $ Z > 2$
1	CCS	A	375	1	4,5,10	0.74	0	1,5,12	0.43	0
2	HTY	B	2	2	11,13,14	0.41	0	15,17,19	1.37	1 (6%)
2	MP4	C	3	2	12,13,14	1.04	0	15,18,20	1.17	1 (6%)
2	GHP	B	4	3,2	10,11,12	1.44	1 (10%)	11,14,16	0.56	0
2	GHP	B	5	2	10,11,12	0.50	0	11,14,16	1.29	2 (18%)
2	HTY	C	2	2	11,13,14	0.59	0	15,17,19	1.76	4 (26%)
2	MP4	B	3	2	12,13,14	0.99	0	15,18,20	1.44	2 (13%)
2	GHP	C	5	2	10,11,12	0.90	1 (10%)	11,14,16	1.30	1 (9%)
2	GHP	C	4	3,2	10,11,12	1.43	1 (10%)	11,14,16	0.84	0
2	GHP	C	1	2	10,11,12	0.61	0	11,14,16	0.61	0
2	MDF	C	7	8,2	13,14,14	0.75	0	18,19,19	3.18	6 (33%)
2	MDF	B	7	8,2	13,14,14	0.92	0	18,19,19	3.14	7 (38%)
2	OMX	C	6	2,7	11,13,14	0.55	0	15,17,19	2.26	1 (6%)
2	OMX	B	6	2,7	11,13,14	0.56	0	15,17,19	2.26	1 (6%)
2	GHP	B	1	2	10,11,12	0.61	0	11,14,16	0.82	0

In the following table, the Chirals column lists the number of chiral outliers, the number of chiral centers analysed, the number of these observed in the model and the number defined in the Chemical Component Dictionary. Similar counts are reported in the Torsion and Rings columns. '-' means no outliers of that kind were identified.

Mol	Type	Chain	Res	Link	Chirals	Torsions	Rings
1	CCS	A	375	1	-	0/1/4/10	-
2	HTY	B	2	2	-	0/9/10/12	0/1/1/1
2	MP4	C	3	2	-	0/4/6/8	0/1/1/1
2	GHP	B	4	3,2	-	2/4/6/8	0/1/1/1
2	GHP	B	5	2	-	0/4/6/8	0/1/1/1
2	HTY	C	2	2	-	0/9/10/12	0/1/1/1

Continued on next page...

Continued from previous page...

Mol	Type	Chain	Res	Link	Chirals	Torsions	Rings
2	MP4	B	3	2	-	0/4/6/8	0/1/1/1
2	GHP	C	5	2	-	0/4/6/8	0/1/1/1
2	GHP	C	4	3,2	-	2/4/6/8	0/1/1/1
2	GHP	C	1	2	-	4/4/6/8	0/1/1/1
2	MDF	C	7	8,2	-	2/10/10/10	0/1/1/1
2	MDF	B	7	8,2	-	2/10/10/10	0/1/1/1
2	OMX	C	6	2,7	-	1/9/10/12	0/1/1/1
2	OMX	B	6	2,7	-	1/9/10/12	0/1/1/1
2	GHP	B	1	2	-	3/4/6/8	0/1/1/1

All (3) bond length outliers are listed below:

Mol	Chain	Res	Type	Atoms	Z	Observed(Å)	Ideal(Å)
2	C	4	GHP	C1-CA	3.61	1.56	1.52
2	B	4	GHP	C1-CA	3.52	1.56	1.52
2	C	5	GHP	CA-C	2.29	1.55	1.51

All (26) bond angle outliers are listed below:

Mol	Chain	Res	Type	Atoms	Z	Observed(°)	Ideal(°)
2	C	7	MDF	CE2-CD2-CG	-8.20	113.07	120.11
2	B	6	OMX	CG-CB-CA	-8.05	100.72	111.49
2	C	6	OMX	CG-CB-CA	-8.03	100.74	111.49
2	B	7	MDF	OXT-C-CA	6.89	117.97	110.58
2	C	7	MDF	CZ-CE2-CD2	6.76	129.77	120.43
2	B	7	MDF	CZ-CE2-CD2	6.49	129.40	120.43
2	B	7	MDF	CE2-CD2-CG	-6.27	114.73	120.11
2	C	7	MDF	OXT-C-CA	5.55	116.52	110.58
2	C	2	HTY	CD2-CG-CB	-4.16	114.52	120.73
2	B	7	MDF	CE2-CZ-CE1	-3.94	114.49	119.20
2	C	7	MDF	CE2-CZ-CE1	-3.53	114.98	119.20
2	B	3	MP4	C3-C4-C5	3.51	120.25	117.59
2	B	2	HTY	CD2-CG-CB	-3.08	116.13	120.73
2	C	2	HTY	CD1-CG-CB	2.88	125.02	120.73
2	C	3	MP4	C3-C4-C5	2.85	119.75	117.59
2	B	7	MDF	OH2-CE2-CD2	-2.84	112.46	119.84
2	B	7	MDF	CH3-OXT-C	-2.69	109.86	115.94
2	B	3	MP4	C6-C5-C4	-2.49	119.51	121.98
2	C	7	MDF	OH2-CE2-CD2	-2.45	113.48	119.84
2	B	5	GHP	C3-C2-C1	-2.40	118.79	121.20
2	C	2	HTY	CE1-CD1-CG	-2.39	118.80	121.20

Continued on next page...

Continued from previous page...

Mol	Chain	Res	Type	Atoms	Z	Observed(°)	Ideal(°)
2	C	5	GHP	C5-C6-C1	-2.20	118.98	121.20
2	C	2	HTY	O-C-CA	-2.10	119.28	124.78
2	B	7	MDF	O-C-CA	-2.06	120.09	124.89
2	B	5	GHP	C6-C1-C2	2.02	120.81	118.29
2	C	7	MDF	CE1-CD1-CG	2.02	121.84	120.11

There are no chirality outliers.

All (17) torsion outliers are listed below:

Mol	Chain	Res	Type	Atoms
2	B	7	MDF	C-CA-CG-CD1
2	B	7	MDF	C-CA-CG-CD2
2	B	6	OMX	O-C-CA-CB
2	C	7	MDF	C-CA-CG-CD1
2	C	7	MDF	C-CA-CG-CD2
2	B	1	GHP	C2-C1-CA-C
2	B	1	GHP	C6-C1-CA-C
2	C	4	GHP	C2-C1-CA-C
2	C	1	GHP	C6-C1-CA-C
2	B	1	GHP	C6-C1-CA-N
2	C	6	OMX	O-C-CA-CB
2	B	4	GHP	C2-C1-CA-C
2	B	4	GHP	C6-C1-CA-C
2	C	4	GHP	C6-C1-CA-C
2	C	1	GHP	C2-C1-CA-C
2	C	1	GHP	C2-C1-CA-N
2	C	1	GHP	C6-C1-CA-N

There are no ring outliers.

6 monomers are involved in 6 short contacts:

Mol	Chain	Res	Type	Clashes	Symm-Clashes
2	C	3	MP4	2	0
2	B	3	MP4	2	0
2	C	5	GHP	1	0
2	C	1	GHP	3	0
2	C	7	MDF	1	0
2	B	1	GHP	2	0

5.5 Carbohydrates ⓘ

10 monosaccharides are modelled in this entry.

In the following table, the Counts columns list the number of bonds (or angles) for which Mogul statistics could be retrieved, the number of bonds (or angles) that are observed in the model and the number of bonds (or angles) that are defined in the Chemical Component Dictionary. The Link column lists molecule types, if any, to which the group is linked. The Z score for a bond length (or angle) is the number of standard deviations the observed value is removed from the expected value. A bond length (or angle) with $|Z| > 2$ is considered an outlier worth inspection. RMSZ is the root-mean-square of all Z scores of the bond lengths (or angles).

Mol	Type	Chain	Res	Link	Bond lengths			Bond angles		
					Counts	RMSZ	# Z > 2	Counts	RMSZ	# Z > 2
3	BGC	D	1	3,2	11,11,12	0.69	0	15,15,17	1.13	1 (6%)
3	MAN	D	2	3	11,11,12	1.10	0	15,15,17	1.40	3 (20%)
3	BXY	D	3	3	9,9,10	2.66	6 (66%)	10,12,14	1.96	2 (20%)
3	RAM	D	4	3	10,10,11	0.54	0	14,14,16	0.88	1 (7%)
3	BGC	E	1	3,2	11,11,12	0.75	0	15,15,17	0.97	0
3	MAN	E	2	3	11,11,12	1.05	2 (18%)	15,15,17	1.03	1 (6%)
3	BXY	E	3	3	9,9,10	2.61	6 (66%)	10,12,14	2.49	3 (30%)
3	RAM	E	4	3	10,10,11	0.58	0	14,14,16	1.20	1 (7%)
4	GLC	F	1	4	12,12,12	0.54	0	17,17,17	1.01	1 (5%)
4	GLC	F	2	4	11,11,12	0.55	0	15,15,17	1.24	1 (6%)

In the following table, the Chirals column lists the number of chiral outliers, the number of chiral centers analysed, the number of these observed in the model and the number defined in the Chemical Component Dictionary. Similar counts are reported in the Torsion and Rings columns. '-' means no outliers of that kind were identified.

Mol	Type	Chain	Res	Link	Chirals	Torsions	Rings
3	BGC	D	1	3,2	-	1/2/19/22	0/1/1/1
3	MAN	D	2	3	-	0/2/19/22	0/1/1/1
3	BXY	D	3	3	-	2/2/15/18	0/1/1/1
3	RAM	D	4	3	-	-	0/1/1/1
3	BGC	E	1	3,2	-	0/2/19/22	0/1/1/1
3	MAN	E	2	3	-	0/2/19/22	0/1/1/1
3	BXY	E	3	3	-	0/2/15/18	0/1/1/1
3	RAM	E	4	3	-	-	0/1/1/1
4	GLC	F	1	4	-	0/2/22/22	0/1/1/1
4	GLC	F	2	4	-	0/2/19/22	0/1/1/1

All (14) bond length outliers are listed below:

Mol	Chain	Res	Type	Atoms	Z	Observed(Å)	Ideal(Å)
3	D	3	BXY	C2-C3	-5.45	1.44	1.53
3	E	3	BXY	C2-C3	-5.36	1.45	1.53
3	D	3	BXY	C1-C2	-3.21	1.46	1.51
3	E	3	BXY	O2-C2	-2.92	1.37	1.43
3	E	3	BXY	C1-C2	-2.62	1.47	1.51
3	D	3	BXY	O2-C2	-2.46	1.38	1.43
3	E	3	BXY	O4-C4	-2.26	1.40	1.44
3	E	2	MAN	O2-C2	-2.16	1.38	1.43
3	D	3	BXY	O3-C3	-2.15	1.37	1.43
3	E	3	BXY	O3-C3	-2.15	1.37	1.43
3	E	3	BXY	C3-C4	-2.13	1.47	1.53
3	D	3	BXY	C3-C4	-2.11	1.47	1.53
3	D	3	BXY	O4-C4	-2.06	1.41	1.44
3	E	2	MAN	O5-C1	2.02	1.46	1.43

All (14) bond angle outliers are listed below:

Mol	Chain	Res	Type	Atoms	Z	Observed(°)	Ideal(°)
3	E	3	BXY	O4-C4-C3	6.08	110.08	104.70
3	D	3	BXY	C1-O4-C4	-4.32	98.09	108.16
4	F	2	GLC	C1-O5-C5	3.85	117.42	112.19
3	E	4	RAM	C6-C5-C4	-3.64	106.35	113.07
3	D	2	MAN	O5-C5-C6	3.21	112.23	107.20
3	D	3	BXY	O4-C4-C3	3.10	107.45	104.70
3	E	2	MAN	O5-C5-C6	2.88	111.72	107.20
3	E	3	BXY	C5-C4-C3	-2.78	108.39	115.09
3	D	2	MAN	C1-C2-C3	-2.73	106.31	109.67
3	E	3	BXY	C1-C2-C3	2.61	105.60	101.63
3	D	4	RAM	C6-C5-C4	-2.35	108.72	113.07
3	D	1	BGC	C6-C5-C4	-2.30	107.63	113.00
3	D	2	MAN	O2-C2-C3	2.15	114.45	110.14
4	F	1	GLC	C6-C5-C4	-2.03	108.24	113.00

There are no chirality outliers.

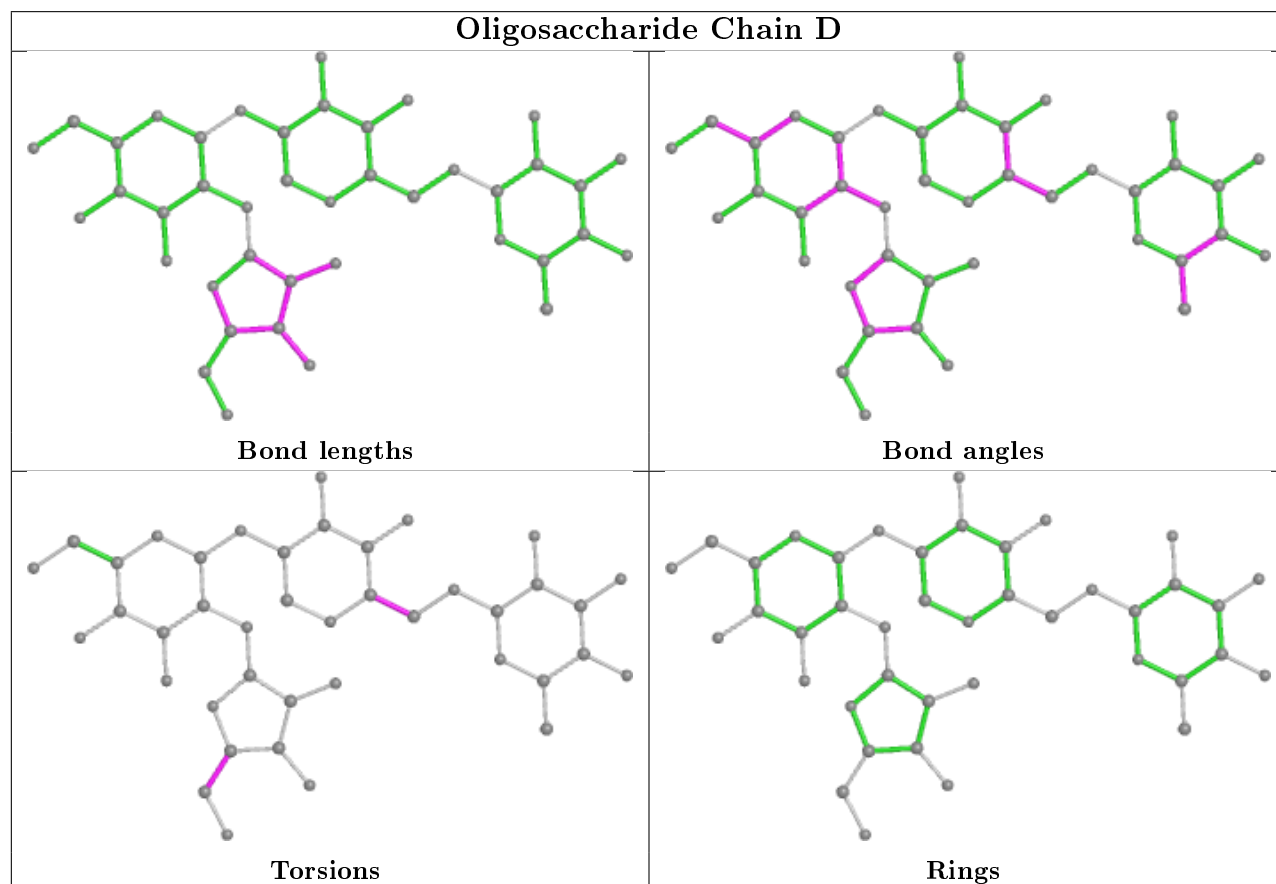
All (3) torsion outliers are listed below:

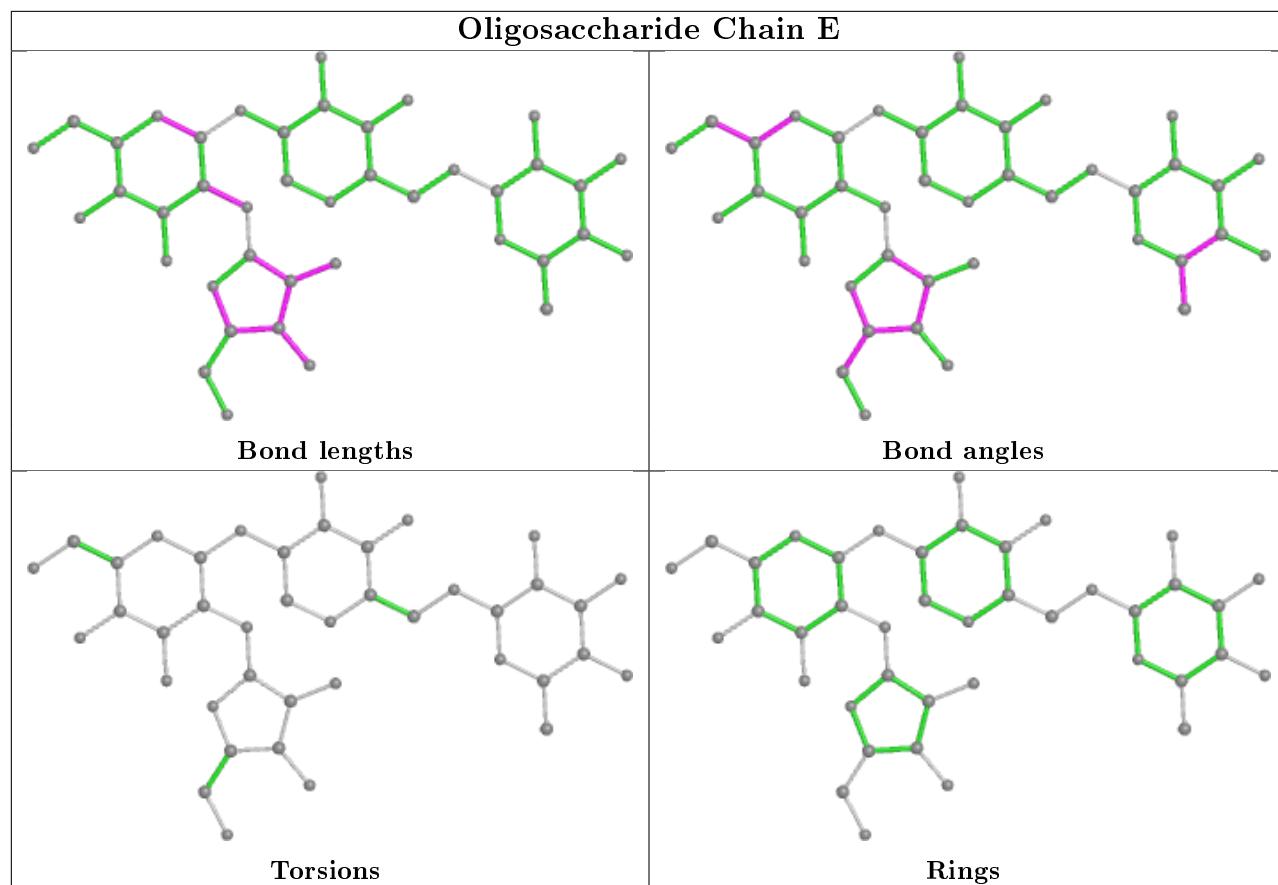
Mol	Chain	Res	Type	Atoms
3	D	3	BXY	O4-C4-C5-O5
3	D	3	BXY	C3-C4-C5-O5
3	D	1	BGC	C4-C5-C6-O6

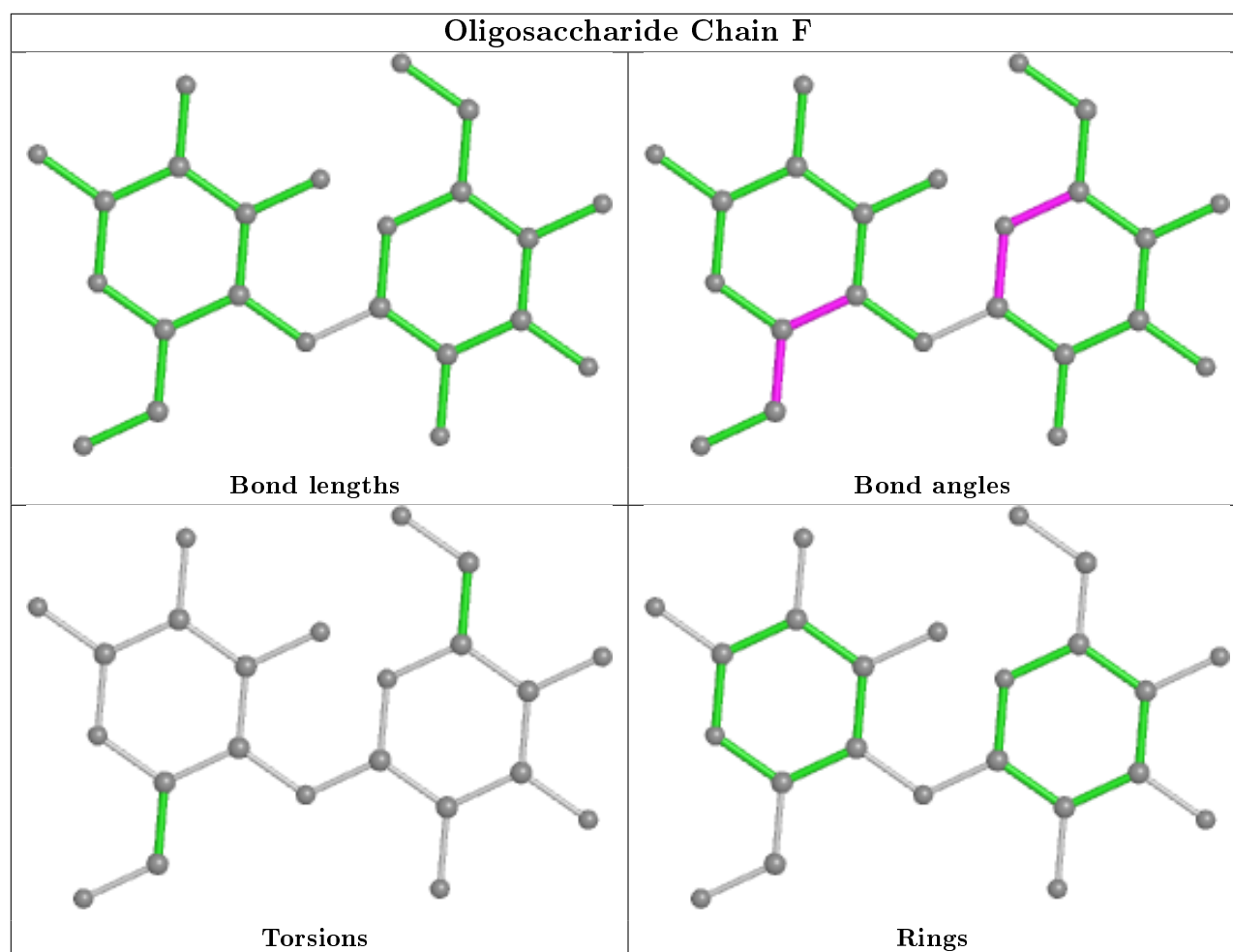
There are no ring outliers.

No monomer is involved in short contacts.

The following is a two-dimensional graphical depiction of Mogul quality analysis of bond lengths, bond angles, torsion angles, and ring geometry for oligosaccharide.







5.6 Ligand geometry [i](#)

11 ligands are modelled in this entry.

In the following table, the Counts columns list the number of bonds (or angles) for which Mogul statistics could be retrieved, the number of bonds (or angles) that are observed in the model and the number of bonds (or angles) that are defined in the Chemical Component Dictionary. The Link column lists molecule types, if any, to which the group is linked. The Z score for a bond length (or angle) is the number of standard deviations the observed value is removed from the expected value. A bond length (or angle) with $|Z| > 2$ is considered an outlier worth inspection. RMSZ is the root-mean-square of all Z scores of the bond lengths (or angles).

Mol	Type	Chain	Res	Link	Bond lengths			Bond angles		
					Counts	RMSZ	$\# Z > 2$	Counts	RMSZ	$\# Z > 2$
5	IPA	A	402	-	3,3,3	0.48	0	3,3,3	0.38	0
8	MAN	C	13	2	11,11,12	0.73	0	15,15,17	0.82	0
6	SO4	A	406	-	4,4,4	0.17	0	6,6,6	0.05	0
6	SO4	A	405	-	4,4,4	0.16	0	6,6,6	0.13	0
7	RST	C	12	2	9,9,10	0.81	0	11,12,14	1.10	1 (9%)

Mol	Type	Chain	Res	Link	Bond lengths			Bond angles		
					Counts	RMSZ	# Z > 2	Counts	RMSZ	# Z > 2
8	MAN	B	13	2	11,11,12	0.67	0	15,15,17	0.92	1 (6%)
6	SO4	C	107	-	4,4,4	0.14	0	6,6,6	0.13	0
5	IPA	A	404	-	3,3,3	0.53	0	3,3,3	0.43	0
6	SO4	A	407	-	4,4,4	0.09	0	6,6,6	0.10	0
5	IPA	A	403	-	3,3,3	0.51	0	3,3,3	0.40	0
7	RST	B	12	2	9,9,10	0.75	0	11,12,14	1.53	2 (18%)

In the following table, the Chirals column lists the number of chiral outliers, the number of chiral centers analysed, the number of these observed in the model and the number defined in the Chemical Component Dictionary. Similar counts are reported in the Torsion and Rings columns. '-' means no outliers of that kind were identified.

Mol	Type	Chain	Res	Link	Chirals	Torsions	Rings
7	RST	C	12	2	-	-	0/1/1/1
8	MAN	B	13	2	-	0/2/19/22	0/1/1/1
8	MAN	C	13	2	-	0/2/19/22	0/1/1/1
7	RST	B	12	2	-	-	0/1/1/1

There are no bond length outliers.

All (4) bond angle outliers are listed below:

Mol	Chain	Res	Type	Atoms	Z	Observed(°)	Ideal(°)
7	B	12	RST	C2-C3-C4	-3.28	105.91	110.31
7	C	12	RST	C2-C3-C4	-2.81	106.54	110.31
7	B	12	RST	C4-C3-N3	-2.27	106.48	110.97
8	B	13	MAN	C2-C3-C4	-2.22	107.06	110.89

There are no chirality outliers.

There are no torsion outliers.

There are no ring outliers.

3 monomers are involved in 5 short contacts:

Mol	Chain	Res	Type	Clashes	Symm-Clashes
5	A	402	IPA	3	0
5	A	404	IPA	1	0
5	A	403	IPA	1	0

5.7 Other polymers

There are no such residues in this entry.

5.8 Polymer linkage issues

There are no chain breaks in this entry.

6 Fit of model and data [i](#)

6.1 Protein, DNA and RNA chains [i](#)

In the following table, the column labelled ‘#RSRZ> 2’ contains the number (and percentage) of RSRZ outliers, followed by percent RSRZ outliers for the chain as percentile scores relative to all X-ray entries and entries of similar resolution. The OWAB column contains the minimum, median, 95th percentile and maximum values of the occupancy-weighted average B-factor per residue. The column labelled ‘Q< 0.9’ lists the number of (and percentage) of residues with an average occupancy less than 0.9.

Mol	Chain	Analysed	<RSRZ>	#RSRZ>2	OWAB(Å ²)	Q<0.9
1	A	375/378 (99%)	-0.17	3 (0%) 86 86	12, 21, 34, 52	0
2	B	0/7	-	-	-	-
2	C	0/7	-	-	-	-
All	All	375/392 (95%)	-0.17	3 (0%) 86 86	12, 21, 34, 52	0

All (3) RSRZ outliers are listed below:

Mol	Chain	Res	Type	RSRZ
1	A	1	MET	7.1
1	A	174	ASN	2.4
1	A	142	ALA	2.1

6.2 Non-standard residues in protein, DNA, RNA chains [i](#)

In the following table, the Atoms column lists the number of modelled atoms in the group and the number defined in the chemical component dictionary. The B-factors column lists the minimum, median, 95th percentile and maximum values of B factors of atoms in the group. The column labelled ‘Q< 0.9’ lists the number of atoms with occupancy less than 0.9.

Mol	Type	Chain	Res	Atoms	RSCC	RSR	B-factors(Å ²)	Q<0.9
1	CCS	A	375	6/11	0.92	0.17	25,27,31,54	0
2	HTY	C	2	13/14	0.94	0.10	18,21,23,23	0
2	GHP	C	5	11/12	0.94	0.10	13,17,19,20	0
2	GHP	C	1	11/12	0.94	0.18	20,24,27,28	0
1	DAL	A	377	5/6	0.95	0.09	18,19,22,24	0
1	DAL	A	378	6/6	0.96	0.07	14,18,19,21	0
2	HTY	B	2	13/14	0.96	0.08	16,19,21,23	0
2	MP4	C	3	13/14	0.96	0.10	18,21,28,28	0
2	MDF	B	7	14/14	0.96	0.10	16,20,24,27	0
2	OMX	C	6	13/14	0.96	0.11	13,16,20,20	0
2	OMX	B	6	13/14	0.96	0.10	14,16,18,19	0

Continued on next page...

Continued from previous page...

Mol	Type	Chain	Res	Atoms	RSCC	RSR	B-factors(\AA^2)	Q<0.9
2	GHP	B	5	11/12	0.96	0.12	14,15,20,21	0
2	MP4	B	3	13/14	0.97	0.08	15,16,23,24	0
2	MDF	C	7	14/14	0.97	0.08	16,18,22,22	0
2	GHP	B	1	11/12	0.97	0.07	14,17,20,21	0
2	GHP	C	4	11/12	0.97	0.08	12,15,18,19	0
2	GHP	B	4	11/12	0.98	0.08	14,15,18,18	0

6.3 Carbohydrates [i](#)

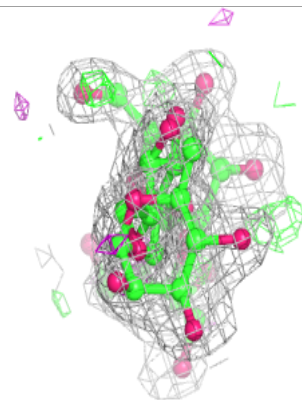
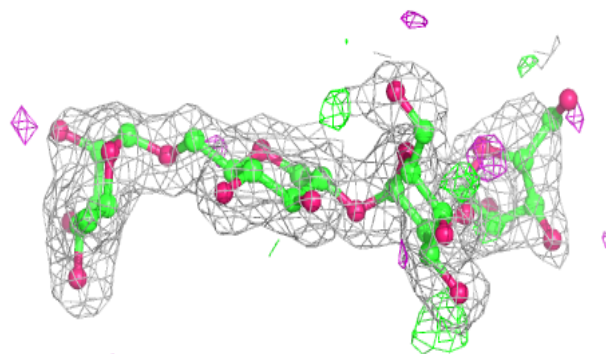
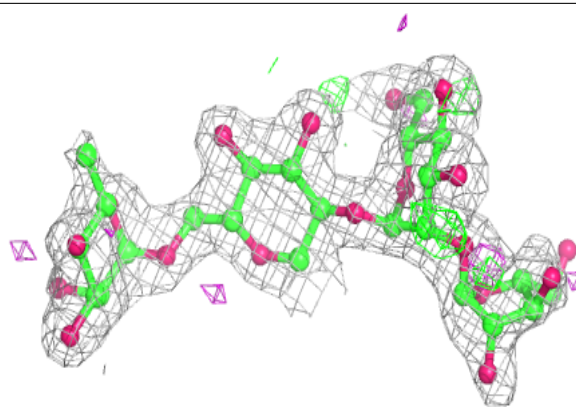
In the following table, the Atoms column lists the number of modelled atoms in the group and the number defined in the chemical component dictionary. The B-factors column lists the minimum, median, 95th percentile and maximum values of B factors of atoms in the group. The column labelled 'Q< 0.9' lists the number of atoms with occupancy less than 0.9.

Mol	Type	Chain	Res	Atoms	RSCC	RSR	B-factors(\AA^2)	Q<0.9
3	MAN	E	2	11/12	0.83	0.17	33,41,47,50	0
3	BXY	D	3	9/10	0.84	0.22	29,39,47,54	0
3	RAM	D	4	10/11	0.91	0.14	25,29,34,38	0
3	BXY	E	3	9/10	0.92	0.14	30,37,45,53	0
3	MAN	D	2	11/12	0.93	0.10	22,26,30,30	0
4	GLC	F	1	12/12	0.96	0.08	12,16,22,24	0
3	BGC	D	1	11/12	0.96	0.08	18,21,26,31	0
3	BGC	E	1	11/12	0.96	0.08	18,22,25,29	0
3	RAM	E	4	10/11	0.96	0.08	22,25,29,30	0
4	GLC	F	2	11/12	0.97	0.06	12,14,17,18	0

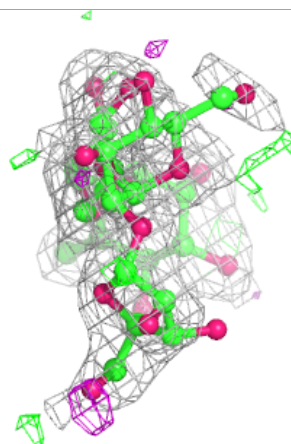
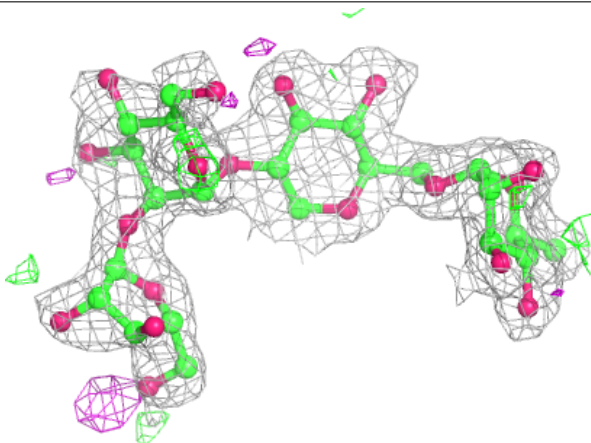
The following is a graphical depiction of the model fit to experimental electron density for oligosaccharide. Each fit is shown from different orientation to approximate a three-dimensional view.

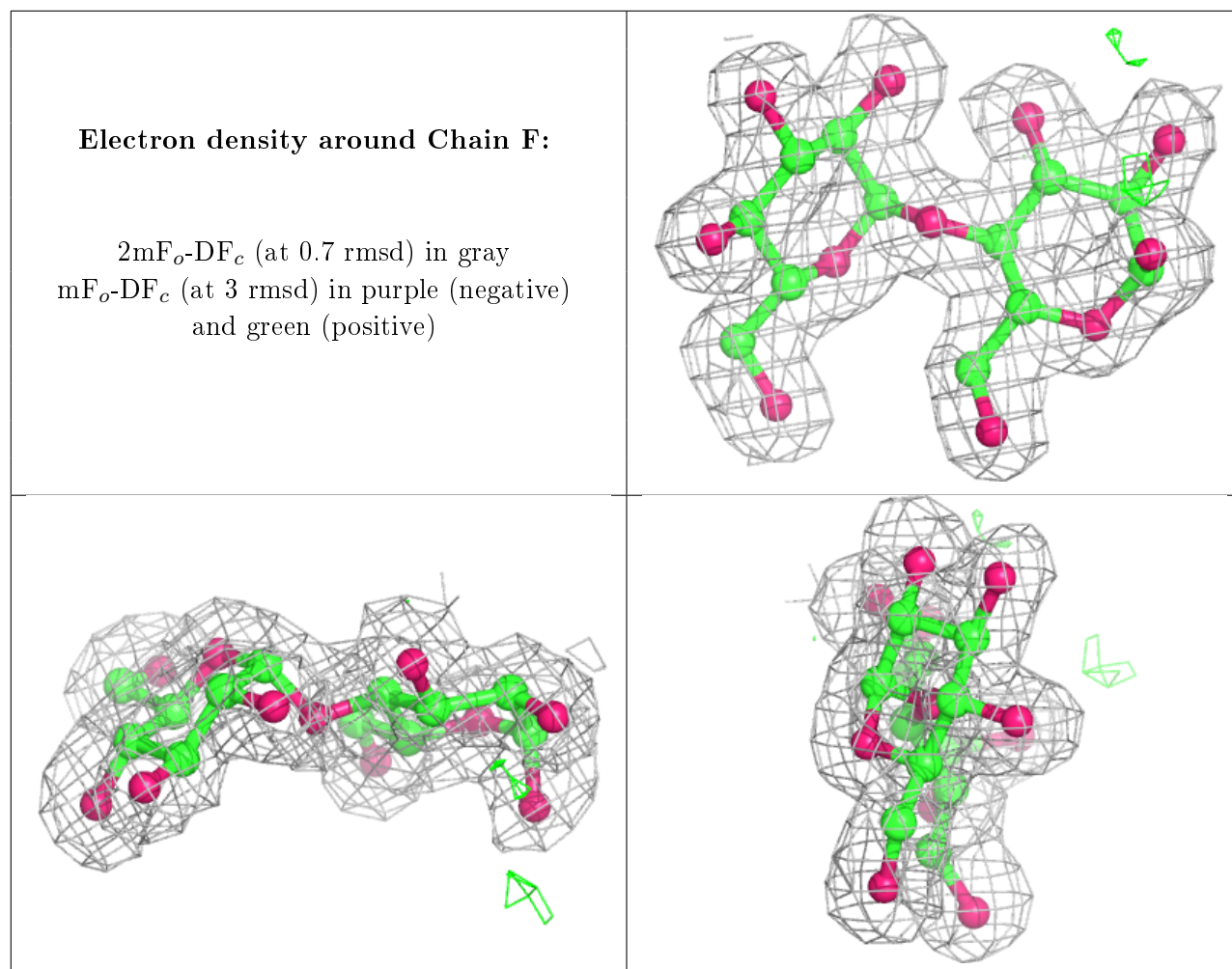
Electron density around Chain D:

$2mF_o-DF_c$ (at 0.7 rmsd) in gray
 mF_o-DF_c (at 3 rmsd) in purple (negative)
and green (positive)

**Electron density around Chain E:**

$2mF_o-DF_c$ (at 0.7 rmsd) in gray
 mF_o-DF_c (at 3 rmsd) in purple (negative)
and green (positive)





6.4 Ligands [i](#)

In the following table, the Atoms column lists the number of modelled atoms in the group and the number defined in the chemical component dictionary. The B-factors column lists the minimum, median, 95th percentile and maximum values of B factors of atoms in the group. The column labelled 'Q< 0.9' lists the number of atoms with occupancy less than 0.9.

Mol	Type	Chain	Res	Atoms	RSCC	RSR	B-factors(Å ²)	Q<0.9
6	SO4	A	407	5/5	0.91	0.21	32,41,44,49	0
5	IPA	A	402	4/4	0.93	0.12	20,26,26,27	0
5	IPA	A	403	4/4	0.93	0.15	23,33,33,34	0
6	SO4	C	107	5/5	0.94	0.20	47,47,51,52	0
5	IPA	A	404	4/4	0.94	0.11	25,27,27,32	0
8	MAN	C	13	11/12	0.94	0.14	22,30,38,40	0
6	SO4	A	406	5/5	0.94	0.33	40,43,58,62	0
7	RST	C	12	9/10	0.95	0.09	16,19,21,22	0
6	SO4	A	405	5/5	0.96	0.24	24,29,36,38	0
8	MAN	B	13	11/12	0.96	0.12	16,19,20,22	0

Continued on next page...

Continued from previous page...

Mol	Type	Chain	Res	Atoms	RSCC	RSR	B-factors(\AA^2)	Q<0.9
7	RST	B	12	9/10	0.96	0.08	16,18,22,23	0

6.5 Other polymers [i](#)

There are no such residues in this entry.