



Full wwPDB X-ray Structure Validation Report ⓘ

Aug 9, 2020 – 08:42 PM BST

PDB ID : 4RUT
Title : crystal structure of murine cyclooxygenase-2 with 13-methyl-arachidonic Acid
Authors : Xu, S.; Kudalkar, S.N.; Banerjee, S.; Makriyannis, A.; Nikas, S.P.; Marnett, L.J.
Deposited on : 2014-11-21
Resolution : 2.16 Å(reported)

This is a Full wwPDB X-ray Structure Validation Report for a publicly released PDB entry.

We welcome your comments at validation@mail.wwpdb.org

A user guide is available at

<https://www.wwpdb.org/validation/2017/XrayValidationReportHelp>

with specific help available everywhere you see the ⓘ symbol.

The following versions of software and data (see [references ⓘ](#)) were used in the production of this report:

MolProbity : 4.02b-467
Mogul : 1.8.5 (274361), CSD as541be (2020)
Xtriage (Phenix) : 1.13
EDS : 2.13.1
buster-report : 1.1.7 (2018)
Percentile statistics : 20191225.v01 (using entries in the PDB archive December 25th 2019)
Refmac : 5.8.0158
CCP4 : 7.0.044 (Gargrove)
Ideal geometry (proteins) : Engh & Huber (2001)
Ideal geometry (DNA, RNA) : Parkinson et al. (1996)
Validation Pipeline (wwPDB-VP) : 2.13.1

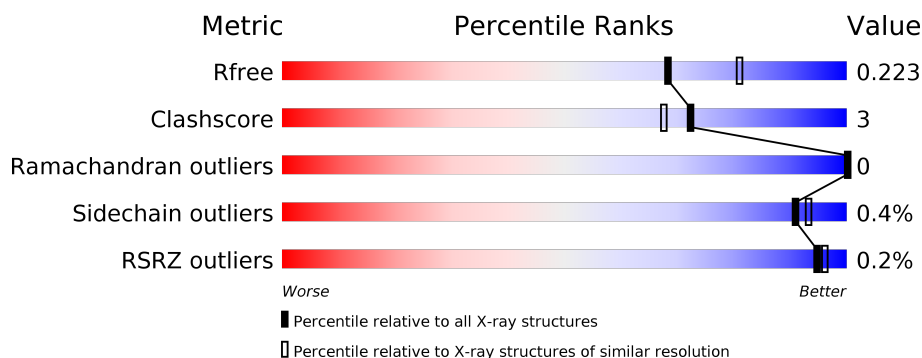
1 Overall quality at a glance

The following experimental techniques were used to determine the structure:

X-RAY DIFFRACTION

The reported resolution of this entry is 2.16 Å.

Percentile scores (ranging between 0-100) for global validation metrics of the entry are shown in the following graphic. The table shows the number of entries on which the scores are based.



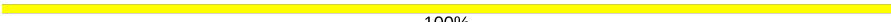
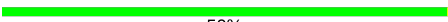
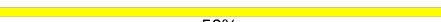
Metric	Whole archive (#Entries)	Similar resolution (#Entries, resolution range(Å))
R_{free}	130704	1479 (2.16-2.16)
Clashscore	141614	1585 (2.16-2.16)
Ramachandran outliers	138981	1560 (2.16-2.16)
Sidechain outliers	138945	1559 (2.16-2.16)
RSRZ outliers	127900	1456 (2.16-2.16)

The table below summarises the geometric issues observed across the polymeric chains and their fit to the electron density. The red, orange, yellow and green segments on the lower bar indicate the fraction of residues that contain outliers for ≥ 3 , 2, 1 and 0 types of geometric quality criteria respectively. A grey segment represents the fraction of residues that are not modelled. The numeric value for each fraction is indicated below the corresponding segment, with a dot representing fractions $\leq 5\%$. The upper red bar (where present) indicates the fraction of residues that have poor fit to the electron density. The numeric value is given above the bar.

Mol	Chain	Length	Quality of chain
1	A	587	 88% 6% 6%
1	B	587	 88% 6% 6%
1	C	587	 88% 6% 6%
1	D	587	 86% 8% 6%
2	E	2	 100%
2	F	2	 50% 50%

Continued on next page...

Continued from previous page...

Mol	Chain	Length	Quality of chain
2	G	2	 100%
2	H	2	 50%  50%

2 Entry composition [i](#)

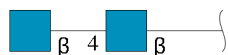
There are 7 unique types of molecules in this entry. The entry contains 19562 atoms, of which 0 are hydrogens and 0 are deuteriums.

In the tables below, the ZeroOcc column contains the number of atoms modelled with zero occupancy, the AltConf column contains the number of residues with at least one atom in alternate conformation and the Trace column contains the number of residues modelled with at most 2 atoms.

- Molecule 1 is a protein called Prostaglandin G/H synthase 2.

Mol	Chain	Residues	Atoms					ZeroOcc	AltConf	Trace
1	A	552	Total	C	N	O	S	0	0	0
			4474	2885	750	814	25			
1	B	552	Total	C	N	O	S	0	0	0
			4474	2885	750	814	25			
1	C	552	Total	C	N	O	S	0	0	0
			4474	2885	750	814	25			
1	D	552	Total	C	N	O	S	0	0	0
			4474	2885	750	814	25			

- Molecule 2 is an oligosaccharide called 2-acetamido-2-deoxy-beta-D-glucopyranose-(1-4)-2-acetamido-2-deoxy-beta-D-glucopyranose.



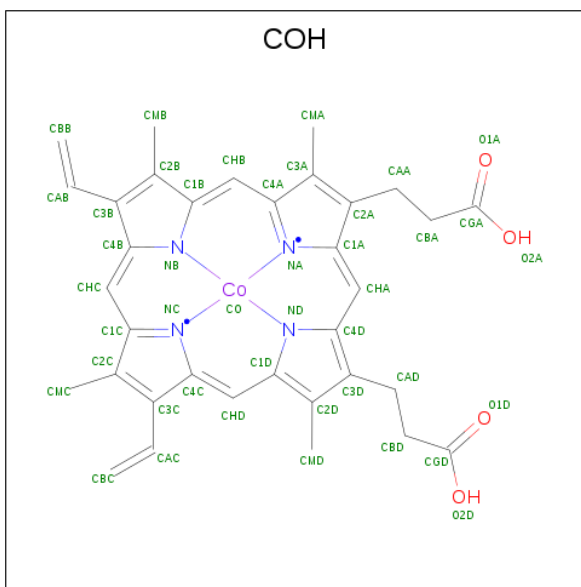
Mol	Chain	Residues	Atoms				ZeroOcc	AltConf	Trace
2	E	2	Total	C	N	O	0	0	0
			28	16	2	10			
2	F	2	Total	C	N	O	0	0	0
			28	16	2	10			
2	G	2	Total	C	N	O	0	0	0
			28	16	2	10			
2	H	2	Total	C	N	O	0	0	0
			28	16	2	10			

- Molecule 3 is 2-acetamido-2-deoxy-beta-D-glucopyranose (three-letter code: NAG) (formula: C₈H₁₅NO₆).



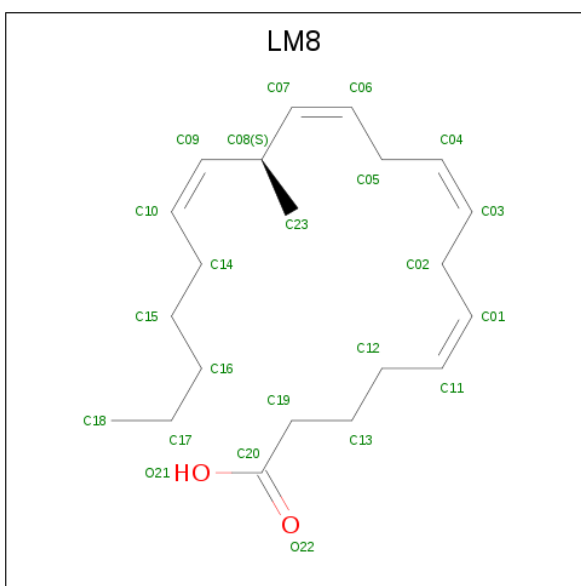
Mol	Chain	Residues	Atoms				ZeroOcc	AltConf
3	A	1	Total	C	N	O	0	0
			14	8	1	5		
3	A	1	Total	C	N	O	0	0
			14	8	1	5		
3	B	1	Total	C	N	O	0	0
			14	8	1	5		
3	B	1	Total	C	N	O	0	0
			14	8	1	5		
3	C	1	Total	C	N	O	0	0
			14	8	1	5		
3	C	1	Total	C	N	O	0	0
			14	8	1	5		
3	D	1	Total	C	N	O	0	0
			14	8	1	5		
3	D	1	Total	C	N	O	0	0
			14	8	1	5		

- Molecule 4 is PROTOPORPHYRIN IX CONTAINING CO (three-letter code: COH) (formula: $C_{34}H_{32}CoN_4O_4$).



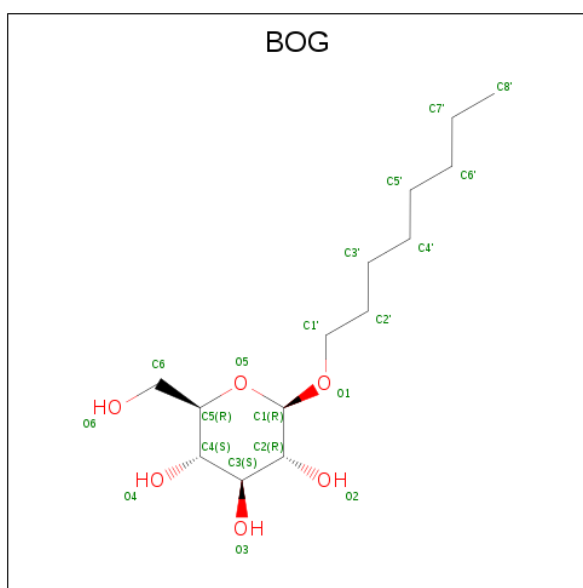
Mol	Chain	Residues	Atoms					ZeroOcc	AltConf
4	A	1	Total	C	Co	N	O	0	0
			43	34	1	4	4		
4	B	1	Total	C	Co	N	O	0	0
			43	34	1	4	4		
4	C	1	Total	C	Co	N	O	0	0
			43	34	1	4	4		
4	D	1	Total	C	Co	N	O	0	0
			43	34	1	4	4		

- Molecule 5 is (5Z,8Z,11Z,13S,14Z)-13-methylicos-5,8,11,14-tetraenoic acid (three-letter code: LM8) (formula: C₂₁H₃₄O₂).



Mol	Chain	Residues	Atoms			ZeroOcc	AltConf
5	A	1	Total	C	O	0	0
			23	21	2		
5	B	1	Total	C	O	0	0
			23	21	2		
5	C	1	Total	C	O	0	0
			23	21	2		
5	D	1	Total	C	O	0	0
			23	21	2		

- Molecule 6 is octyl beta-D-glucopyranoside (three-letter code: BOG) (formula: $C_{14}H_{28}O_6$).



Mol	Chain	Residues	Atoms			ZeroOcc	AltConf
6	B	1	Total	C	O	0	0
			20	14	6		
6	D	1	Total	C	O	0	0
			20	14	6		


- Molecule 7 is water.

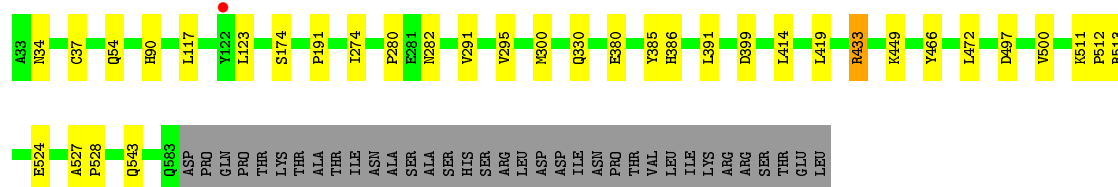
Mol	Chain	Residues	Atoms		ZeroOcc	AltConf
7	A	276	Total	O	0	0
			276	276		
7	B	306	Total	O	0	0
			306	306		
7	C	288	Total	O	0	0
			288	288		
7	D	268	Total	O	0	0
			268	268		

3 Residue-property plots [i](#)


These plots are drawn for all protein, RNA, DNA and oligosaccharide chains in the entry. The first graphic for a chain summarises the proportions of the various outlier classes displayed in the second graphic. The second graphic shows the sequence view annotated by issues in geometry and electron density. Residues are color-coded according to the number of geometric quality criteria for which they contain at least one outlier: green = 0, yellow = 1, orange = 2 and red = 3 or more. A red dot above a residue indicates a poor fit to the electron density ($RSRZ > 2$). Stretches of 2 or more consecutive residues without any outlier are shown as a green connector. Residues present in the sample, but not in the model, are shown in grey.

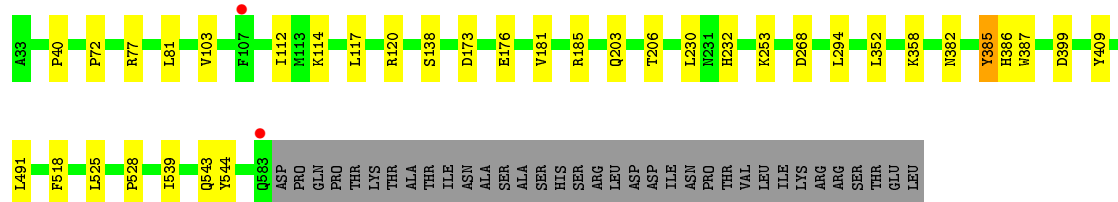
- Molecule 1: Prostaglandin G/H synthase 2

Chain A: 




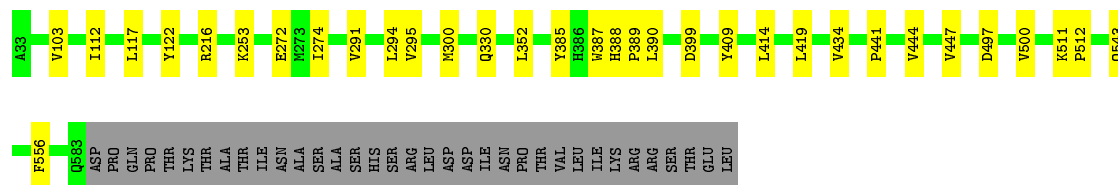
- Molecule 1: Prostaglandin G/H synthase 2

Chain B: 




- Molecule 1: Prostaglandin G/H synthase 2

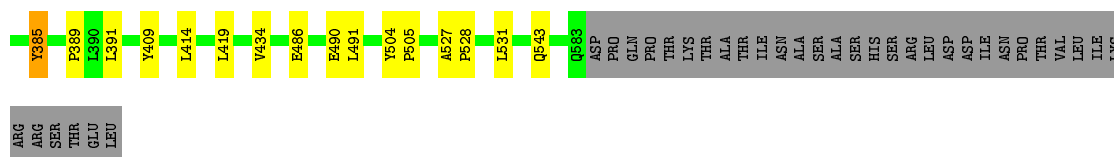
Chain C: 



- Molecule 1: Prostaglandin G/H synthase 2

Chain D: 





- Molecule 2: 2-acetamido-2-deoxy-beta-D-glucopyranose-(1-4)-2-acetamido-2-deoxy-beta-D-glucopyranose

Chain E:  100%

MAG1
MAG2

- Molecule 2: 2-acetamido-2-deoxy-beta-D-glucopyranose-(1-4)-2-acetamido-2-deoxy-beta-D-glucopyranose

Chain F:  50% 50%

MAG1
MAG2

- Molecule 2: 2-acetamido-2-deoxy-beta-D-glucopyranose-(1-4)-2-acetamido-2-deoxy-beta-D-glucopyranose

Chain G:  100%

MAG1
MAG2

- Molecule 2: 2-acetamido-2-deoxy-beta-D-glucopyranose-(1-4)-2-acetamido-2-deoxy-beta-D-glucopyranose

Chain H:  50% 50%

MAG1
MAG2

4 Data and refinement statistics

Property	Value	Source
Space group	C 1 2 1	Depositor
Cell constants a, b, c, α , β , γ	215.80Å 121.54Å 134.94Å 90.00° 123.60° 90.00°	Depositor
Resolution (Å)	112.39 – 2.16 112.40 – 2.16	Depositor EDS
% Data completeness (in resolution range)	98.1 (112.39-2.16) 87.8 (112.40-2.16)	Depositor EDS
R_{merge}	0.14	Depositor
R_{sym}	(Not available)	Depositor
$\langle I/\sigma(I) \rangle$ ¹	0.93 (at 2.16Å)	Xtriage
Refinement program	PHENIX (phenix.refine: 1.9_1692)	Depositor
R, R_{free}	0.176 , 0.224 0.178 , 0.223	Depositor DCC
R_{free} test set	4543 reflections (2.98%)	wwPDB-VP
Wilson B-factor (Å ²)	33.6	Xtriage
Anisotropy	0.214	Xtriage
Bulk solvent k_{sol} (e/Å ³), B_{sol} (Å ²)	0.32 , 45.7	EDS
L-test for twinning ²	$\langle L \rangle = 0.48$, $\langle L^2 \rangle = 0.30$	Xtriage
Estimated twinning fraction	0.012 for $1/2^*h-3/2^*k,-1/2^*h-1/2^*k,-1/2^*h+1/2^*k-l$ 0.017 for $1/2^*h+3/2^*k,1/2^*h-1/2^*k,-1/2^*h-1/2^*k-l$	Xtriage
F_o, F_c correlation	0.95	EDS
Total number of atoms	19562	wwPDB-VP
Average B, all atoms (Å ²)	45.0	wwPDB-VP

Xtriage's analysis on translational NCS is as follows: *The largest off-origin peak in the Patterson function is 3.51% of the height of the origin peak. No significant pseudotranslation is detected.*

¹Intensities estimated from amplitudes.

²Theoretical values of $\langle |L| \rangle$, $\langle L^2 \rangle$ for acentric reflections are 0.5, 0.333 respectively for untwinned datasets, and 0.375, 0.2 for perfectly twinned datasets.

5 Model quality [i](#)

5.1 Standard geometry [i](#)

Bond lengths and bond angles in the following residue types are not validated in this section: LM8, COH, NAG, BOG

The Z score for a bond length (or angle) is the number of standard deviations the observed value is removed from the expected value. A bond length (or angle) with $|Z| > 5$ is considered an outlier worth inspection. RMSZ is the root-mean-square of all Z scores of the bond lengths (or angles).

Mol	Chain	Bond lengths		Bond angles	
		RMSZ	$\# Z > 5$	RMSZ	$\# Z > 5$
1	A	0.44	0/4601	0.55	0/6239
1	B	0.45	0/4601	0.56	0/6239
1	C	0.46	0/4601	0.56	0/6239
1	D	0.44	0/4601	0.54	0/6239
All	All	0.45	0/18404	0.55	0/24956

There are no bond length outliers.

There are no bond angle outliers.

There are no chirality outliers.

There are no planarity outliers.

5.2 Too-close contacts [i](#)

In the following table, the Non-H and H(model) columns list the number of non-hydrogen atoms and hydrogen atoms in the chain respectively. The H(added) column lists the number of hydrogen atoms added and optimized by MolProbity. The Clashes column lists the number of clashes within the asymmetric unit, whereas Symm-Clashes lists symmetry related clashes.

Mol	Chain	Non-H	H(model)	H(added)	Clashes	Symm-Clashes
1	A	4474	0	4373	28	0
1	B	4474	0	4373	32	0
1	C	4474	0	4373	26	0
1	D	4474	0	4373	37	0
2	E	28	0	25	0	0
2	F	28	0	25	0	0
2	G	28	0	25	1	0
2	H	28	0	25	0	0
3	A	28	0	26	0	0

Continued on next page...

Continued from previous page...

Mol	Chain	Non-H	H(model)	H(added)	Clashes	Symm-Clashes
3	B	28	0	26	1	0
3	C	28	0	26	0	0
3	D	28	0	26	0	0
4	A	43	0	30	5	0
4	B	43	0	30	2	0
4	C	43	0	30	5	0
4	D	43	0	30	6	0
5	A	23	0	33	3	0
5	B	23	0	33	1	0
5	C	23	0	33	3	0
5	D	23	0	33	3	0
6	B	20	0	28	7	0
6	D	20	0	28	2	0
7	A	276	0	0	3	0
7	B	306	0	0	4	0
7	C	288	0	0	2	0
7	D	268	0	0	1	0
All	All	19562	0	18004	125	0

The all-atom clashscore is defined as the number of clashes found per 1000 atoms (including hydrogen atoms). The all-atom clashscore for this structure is 3.

All (125) close contacts within the same asymmetric unit are listed below, sorted by their clash magnitude.

Atom-1	Atom-2	Interatomic distance (Å)	Clash overlap (Å)
1:B:72:PRO:HG2	1:B:77:ARG:HE	1.28	0.97
1:B:185:ARG:HE	6:B:707:BOG:C6	1.98	0.77
1:A:295:VAL:HG11	4:A:705:COH:HBB1	1.72	0.70
1:B:185:ARG:HE	6:B:707:BOG:H61	1.55	0.70
1:D:72:PRO:HG2	1:D:77:ARG:HE	1.58	0.69
1:C:295:VAL:HG11	4:C:705:COH:HBB1	1.73	0.69
1:B:185:ARG:HH21	6:B:707:BOG:C6	2.09	0.65
1:C:122:TYR:OH	7:C:945:HOH:O	2.02	0.63
1:C:272:GLU:H	1:C:272:GLU:CD	2.03	0.61
1:D:169:LYS:HD2	1:D:170:GLU:HG2	1.82	0.61
1:D:206:THR:HG21	1:D:385:TYR:CE1	2.35	0.61
1:D:103:VAL:HG11	1:D:112:ILE:HD12	1.84	0.59
4:D:705:COH:HBC1	4:D:705:COH:HMC1	1.88	0.56
1:C:388:HIS:HE1	1:C:447:VAL:HG11	1.69	0.56
1:B:114:LYS:NZ	7:B:929:HOH:O	2.39	0.55
1:A:117:LEU:CD2	5:A:706:LM8:H28	2.36	0.55

Continued on next page...

Continued from previous page...

Atom-1	Atom-2	Interatomic distance (Å)	Clash overlap (Å)
1:B:120:ARG:NH1	7:B:1037:HOH:O	2.41	0.54
1:C:295:VAL:HG11	4:C:705:COH:CBB	2.37	0.53
4:A:705:COH:HBC1	4:A:705:COH:HMC1	1.90	0.53
1:A:174:SER:OG	1:A:449:LYS:NZ	2.42	0.53
1:C:352:LEU:CD1	5:C:706:LM8:H5	2.39	0.52
1:D:272:GLU:CD	1:D:272:GLU:H	2.12	0.52
1:C:272:GLU:N	1:C:272:GLU:OE1	2.42	0.52
1:D:101:ASN:O	1:D:105:ASN:ND2	2.37	0.52
1:B:294:LEU:HA	1:B:409:TYR:CE1	2.46	0.51
1:B:185:ARG:HH21	6:B:707:BOG:H61	1.74	0.51
1:A:472:LEU:HD21	1:A:524:GLU:HG3	1.93	0.51
1:B:40:PRO:HA	3:B:701:NAG:H82	1.93	0.51
1:C:216:ARG:NH1	2:G:2:NAG:O7	2.44	0.51
1:D:295:VAL:HG11	4:D:705:COH:CBB	2.41	0.51
1:A:295:VAL:HG11	4:A:705:COH:CBB	2.39	0.50
1:A:391:LEU:CD2	4:A:705:COH:HAB	2.41	0.50
1:D:294:LEU:HG	1:D:295:VAL:HG13	1.94	0.50
1:C:543:GLN:HA	1:C:543:GLN:OE1	2.12	0.50
1:D:294:LEU:HA	1:D:409:TYR:CE1	2.47	0.50
1:D:34:ASN:HB3	1:D:37:CYS:SG	2.52	0.49
1:A:117:LEU:HD21	5:A:706:LM8:C18	2.42	0.49
1:A:391:LEU:HD21	4:A:705:COH:HAB	1.94	0.49
1:D:117:LEU:CD2	5:D:706:LM8:H28	2.43	0.49
1:C:103:VAL:HG11	1:C:112:ILE:HD12	1.94	0.49
1:C:497:ASP:HB3	1:C:500:VAL:HG23	1.94	0.49
1:C:352:LEU:CD1	5:C:706:LM8:C04	2.91	0.48
1:B:185:ARG:NE	6:B:707:BOG:C6	2.72	0.48
1:D:348:TYR:OH	1:D:385:TYR:OH	2.24	0.48
1:D:352:LEU:CD1	5:D:706:LM8:H5	2.43	0.48
1:A:280:PRO:HB2	1:A:282:ASN:OD1	2.13	0.48
1:B:77:ARG:O	1:B:81:LEU:HD23	2.14	0.48
1:D:274:ILE:HD12	1:D:291:VAL:HG12	1.94	0.48
1:A:300:MET:HG3	1:A:419:LEU:HD22	1.95	0.48
1:B:382:ASN:O	1:B:386:HIS:HD2	1.97	0.48
1:C:414:LEU:HD11	1:C:419:LEU:HD23	1.96	0.47
1:C:441:PRO:HG2	1:C:444:VAL:HG22	1.95	0.47
1:D:391:LEU:HD21	4:D:705:COH:HAB	1.96	0.47
1:A:386:HIS:HE1	7:A:1010:HOH:O	1.96	0.47
1:A:380:GLU:HG2	1:A:466:TYR:CE1	2.49	0.47
1:D:181:VAL:HG21	1:D:491:LEU:HD21	1.97	0.47
1:D:352:LEU:CD1	5:D:706:LM8:C04	2.93	0.47

Continued on next page...

Continued from previous page...

Atom-1	Atom-2	Interatomic distance (Å)	Clash overlap (Å)
1:A:543:GLN:OE1	1:A:543:GLN:HA	2.15	0.47
1:C:117:LEU:CD2	5:C:706:LM8:H28	2.45	0.47
4:C:705:COH:HBC1	4:C:705:COH:HMC1	1.97	0.47
1:D:169:LYS:HB3	1:D:169:LYS:HE3	1.63	0.47
1:D:414:LEU:HD11	1:D:419:LEU:HD23	1.97	0.46
1:A:34:ASN:HB3	1:A:37:CYS:SG	2.55	0.46
1:B:268:ASP:OD1	7:B:985:HOH:O	2.21	0.46
1:A:414:LEU:HD11	1:A:419:LEU:HD23	1.97	0.46
1:D:120:ARG:HB2	1:D:531:LEU:HD22	1.97	0.46
1:D:77:ARG:O	1:D:81:LEU:HD23	2.15	0.46
1:C:274:ILE:HD12	1:C:291:VAL:HG12	1.98	0.46
1:B:173:ASP:HB3	1:B:176:GLU:HG2	1.97	0.46
1:A:399:ASP:OD1	1:A:399:ASP:N	2.38	0.46
1:C:387:TRP:HB2	4:C:705:COH:CBC	2.45	0.46
1:D:300:MET:HG3	1:D:419:LEU:HD22	1.96	0.45
1:B:399:ASP:OD1	1:B:399:ASP:N	2.37	0.45
1:A:191:PRO:CD	1:A:433:ARG:HD3	2.46	0.45
1:A:54:GLN:HG3	7:A:1021:HOH:O	2.16	0.45
1:B:173:ASP:HB3	1:B:176:GLU:CG	2.47	0.45
1:A:117:LEU:HD21	5:A:706:LM8:H28	1.99	0.44
1:B:206:THR:HG21	1:B:385:TYR:CE1	2.53	0.44
4:D:705:COH:HBB1	4:D:705:COH:HMB1	2.00	0.44
1:D:170:GLU:OE1	7:D:923:HOH:O	2.21	0.44
1:D:272:GLU:OE1	1:D:272:GLU:N	2.47	0.44
1:C:388:HIS:CE1	1:C:447:VAL:HG11	2.50	0.43
1:D:76:THR:O	1:D:80:LEU:HD13	2.17	0.43
1:A:497:ASP:HB3	1:A:500:VAL:HG23	1.99	0.43
1:D:389:PRO:HB2	1:D:434:VAL:HA	2.01	0.43
1:B:543:GLN:OE1	1:B:543:GLN:HA	2.18	0.43
1:B:185:ARG:NH2	6:B:707:BOG:C6	2.79	0.43
1:D:295:VAL:HG11	4:D:705:COH:HBB1	2.00	0.43
1:D:543:GLN:NE2	1:D:543:GLN:HA	2.34	0.43
1:B:539:ILE:HA	1:B:544:TYR:HB3	2.00	0.43
1:A:543:GLN:HB2	7:A:858:HOH:O	2.18	0.43
1:B:117:LEU:CD2	5:B:706:LM8:H28	2.49	0.43
1:C:253:LYS:NZ	7:C:1008:HOH:O	2.50	0.43
1:D:289:GLN:OE1	1:D:291:VAL:HG22	2.19	0.43
1:C:511:LYS:HA	1:C:512:PRO:HD3	1.92	0.43
1:B:253:LYS:NZ	7:B:924:HOH:O	2.52	0.42
1:D:486:GLU:OE1	6:D:707:BOG:O4	2.32	0.42
1:B:525:LEU:O	1:B:528:PRO:HD2	2.20	0.42

Continued on next page...

Continued from previous page...

Atom-1	Atom-2	Interatomic distance (Å)	Clash overlap (Å)
1:A:274:ILE:HD12	1:A:291:VAL:HG12	2.02	0.41
1:B:387:TRP:HB2	4:B:705:COH:HAC	2.02	0.41
1:D:527:ALA:HB3	1:D:528:PRO:HD3	2.02	0.41
1:A:123:LEU:HA	1:A:123:LEU:HD23	1.87	0.41
1:B:230:LEU:HA	1:B:232:HIS:CE1	2.55	0.41
1:C:389:PRO:HB2	1:C:434:VAL:HA	2.01	0.41
1:C:300:MET:HG3	1:C:419:LEU:HD22	2.01	0.41
1:A:330:GLN:HB3	1:B:138:SER:HB2	2.02	0.41
1:B:358:LYS:HB3	1:B:358:LYS:HE3	1.65	0.41
1:B:181:VAL:HG21	1:B:491:LEU:HD21	2.02	0.41
1:C:330:GLN:HB3	1:D:138:SER:HB2	2.01	0.41
1:C:390:LEU:HD12	4:C:705:COH:HBC1	2.03	0.41
1:A:527:ALA:HB3	1:A:528:PRO:HD3	2.03	0.41
1:A:191:PRO:HD2	1:A:433:ARG:HD3	2.02	0.41
1:A:511:LYS:HA	1:A:512:PRO:HD3	1.95	0.41
1:B:103:VAL:HG11	1:B:112:ILE:HD12	2.02	0.41
1:A:90:HIS:CE1	1:A:513:ARG:HG2	2.55	0.41
1:D:316:LEU:HD23	1:D:316:LEU:HA	1.90	0.41
1:B:203:GLN:HA	4:B:705:COH:HBC1	2.02	0.40
1:B:352:LEU:HD22	1:B:518:PHE:CE2	2.56	0.40
1:C:294:LEU:HA	1:C:409:TYR:CE1	2.56	0.40
1:D:230:LEU:HA	1:D:232:HIS:CE1	2.56	0.40
1:B:185:ARG:NE	6:B:707:BOG:H61	2.28	0.40
1:D:490:GLU:OE1	6:D:707:BOG:O2	2.30	0.40
1:D:504:TYR:HB3	1:D:505:PRO:HD3	2.03	0.40
1:C:399:ASP:N	1:C:399:ASP:OD1	2.37	0.40
1:D:391:LEU:CD2	4:D:705:COH:HAB	2.52	0.40

There are no symmetry-related clashes.

5.3 Torsion angles

5.3.1 Protein backbone

In the following table, the Percentiles column shows the percent Ramachandran outliers of the chain as a percentile score with respect to all X-ray entries followed by that with respect to entries of similar resolution.

The Analysed column shows the number of residues for which the backbone conformation was analysed, and the total number of residues.

Mol	Chain	Analysed	Favoured	Allowed	Outliers	Percentiles	
1	A	550/587 (94%)	533 (97%)	17 (3%)	0	100	100
1	B	550/587 (94%)	537 (98%)	13 (2%)	0	100	100
1	C	550/587 (94%)	538 (98%)	12 (2%)	0	100	100
1	D	550/587 (94%)	537 (98%)	13 (2%)	0	100	100
All	All	2200/2348 (94%)	2145 (98%)	55 (2%)	0	100	100

There are no Ramachandran outliers to report.

5.3.2 Protein sidechains ⓘ

In the following table, the Percentiles column shows the percent sidechain outliers of the chain as a percentile score with respect to all X-ray entries followed by that with respect to entries of similar resolution.

The Analysed column shows the number of residues for which the sidechain conformation was analysed, and the total number of residues.

Mol	Chain	Analysed	Rotameric	Outliers	Percentiles	
1	A	493/525 (94%)	491 (100%)	2 (0%)	91	93
1	B	493/525 (94%)	492 (100%)	1 (0%)	93	96
1	C	493/525 (94%)	491 (100%)	2 (0%)	91	93
1	D	493/525 (94%)	491 (100%)	2 (0%)	91	93
All	All	1972/2100 (94%)	1965 (100%)	7 (0%)	91	93

All (7) residues with a non-rotameric sidechain are listed below:

Mol	Chain	Res	Type
1	A	385	TYR
1	A	433	ARG
1	B	385	TYR
1	C	385	TYR
1	C	556	PHE
1	D	239	ASP
1	D	385	TYR

Some sidechains can be flipped to improve hydrogen bonding and reduce clashes. All (1) such sidechains are listed below:

Mol	Chain	Res	Type
1	D	543	GLN

5.3.3 RNA ⓘ

There are no RNA molecules in this entry.

5.4 Non-standard residues in protein, DNA, RNA chains ⓘ

There are no non-standard protein/DNA/RNA residues in this entry.

5.5 Carbohydrates ⓘ

8 monosaccharides are modelled in this entry.

In the following table, the Counts columns list the number of bonds (or angles) for which Mogul statistics could be retrieved, the number of bonds (or angles) that are observed in the model and the number of bonds (or angles) that are defined in the Chemical Component Dictionary. The Link column lists molecule types, if any, to which the group is linked. The Z score for a bond length (or angle) is the number of standard deviations the observed value is removed from the expected value. A bond length (or angle) with $|Z| > 2$ is considered an outlier worth inspection. RMSZ is the root-mean-square of all Z scores of the bond lengths (or angles).

Mol	Type	Chain	Res	Link	Bond lengths			Bond angles		
					Counts	RMSZ	# Z > 2	Counts	RMSZ	# Z > 2
2	NAG	E	1	1,2	14,14,15	0.28	0	17,19,21	0.85	1 (5%)
2	NAG	E	2	2	14,14,15	0.70	1 (7%)	17,19,21	0.58	0
2	NAG	F	1	1,2	14,14,15	0.53	0	17,19,21	0.87	1 (5%)
2	NAG	F	2	2	14,14,15	0.38	0	17,19,21	0.55	0
2	NAG	G	1	1,2	14,14,15	0.37	0	17,19,21	0.69	1 (5%)
2	NAG	G	2	2	14,14,15	0.62	0	17,19,21	0.51	0
2	NAG	H	1	1,2	14,14,15	0.35	0	17,19,21	0.80	1 (5%)
2	NAG	H	2	2	14,14,15	0.64	0	17,19,21	0.55	0

In the following table, the Chirals column lists the number of chiral outliers, the number of chiral centers analysed, the number of these observed in the model and the number defined in the Chemical Component Dictionary. Similar counts are reported in the Torsion and Rings columns. '-' means no outliers of that kind were identified.

Mol	Type	Chain	Res	Link	Chirals	Torsions	Rings
2	NAG	E	1	1,2	-	0/6/23/26	0/1/1/1
2	NAG	E	2	2	-	2/6/23/26	0/1/1/1
2	NAG	F	1	1,2	-	0/6/23/26	0/1/1/1
2	NAG	F	2	2	-	0/6/23/26	0/1/1/1
2	NAG	G	1	1,2	-	0/6/23/26	0/1/1/1

Continued on next page...

Continued from previous page...

Mol	Type	Chain	Res	Link	Chirals	Torsions	Rings
2	NAG	G	2	2	-	2/6/23/26	0/1/1/1
2	NAG	H	1	1,2	-	0/6/23/26	0/1/1/1
2	NAG	H	2	2	-	1/6/23/26	0/1/1/1

All (1) bond length outliers are listed below:

Mol	Chain	Res	Type	Atoms	Z	Observed(Å)	Ideal(Å)
2	E	2	NAG	C1-C2	2.37	1.55	1.52

All (4) bond angle outliers are listed below:

Mol	Chain	Res	Type	Atoms	Z	Observed(°)	Ideal(°)
2	F	1	NAG	C1-O5-C5	3.22	116.55	112.19
2	E	1	NAG	C1-O5-C5	2.85	116.05	112.19
2	H	1	NAG	C1-O5-C5	2.80	115.98	112.19
2	G	1	NAG	C1-O5-C5	2.03	114.94	112.19

There are no chirality outliers.

All (5) torsion outliers are listed below:

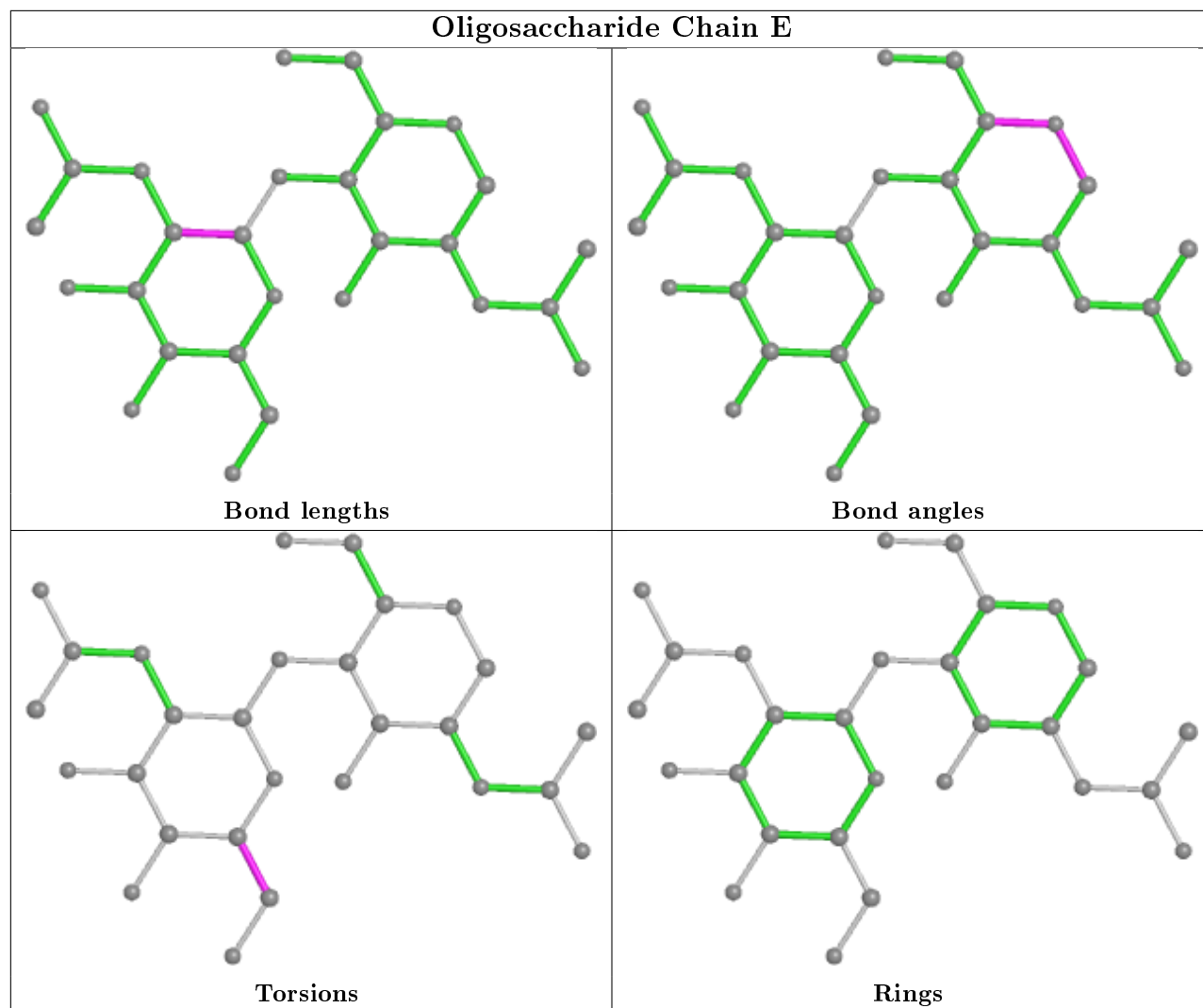
Mol	Chain	Res	Type	Atoms
2	G	2	NAG	O5-C5-C6-O6
2	G	2	NAG	C4-C5-C6-O6
2	E	2	NAG	O5-C5-C6-O6
2	E	2	NAG	C4-C5-C6-O6
2	H	2	NAG	O5-C5-C6-O6

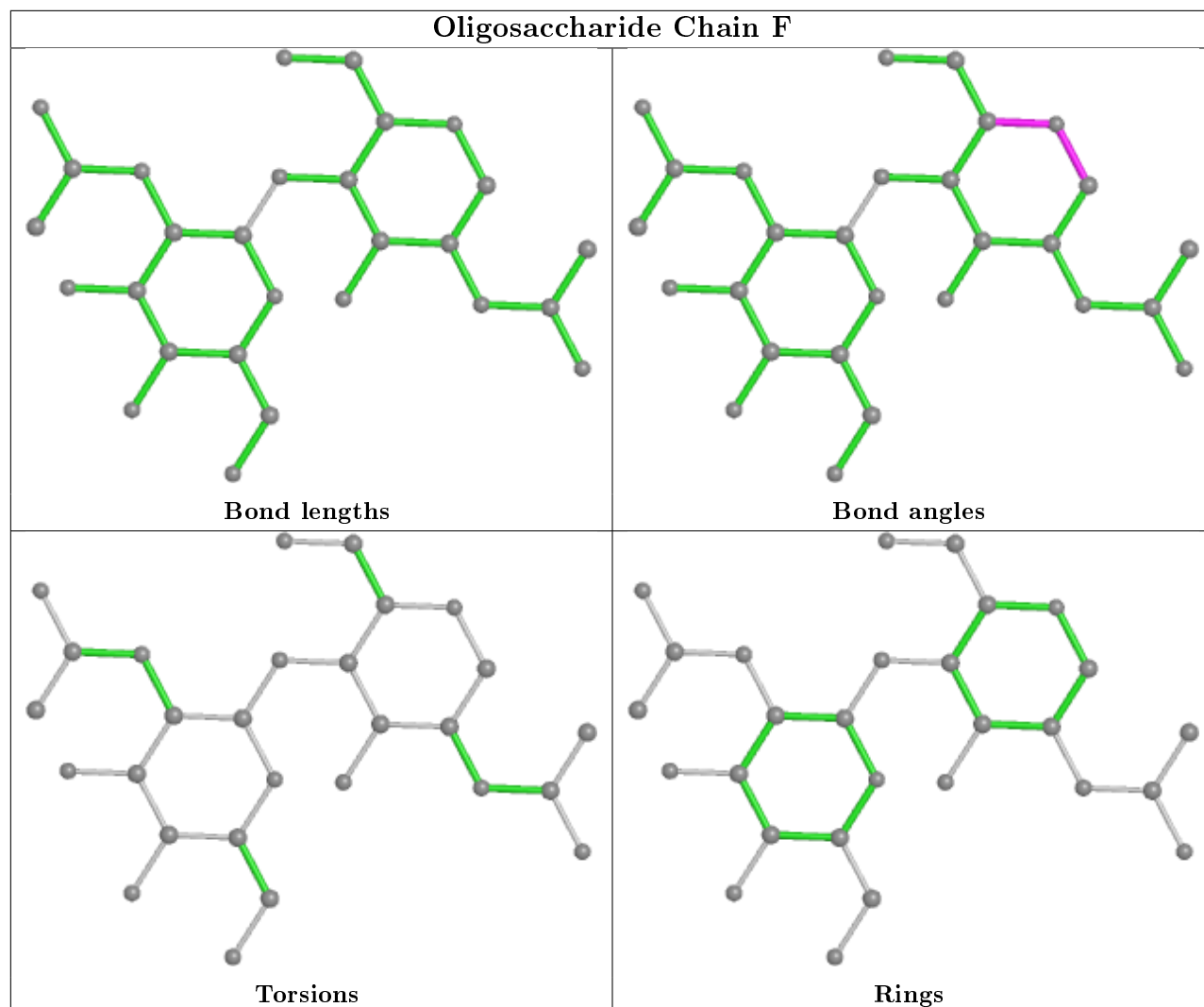
There are no ring outliers.

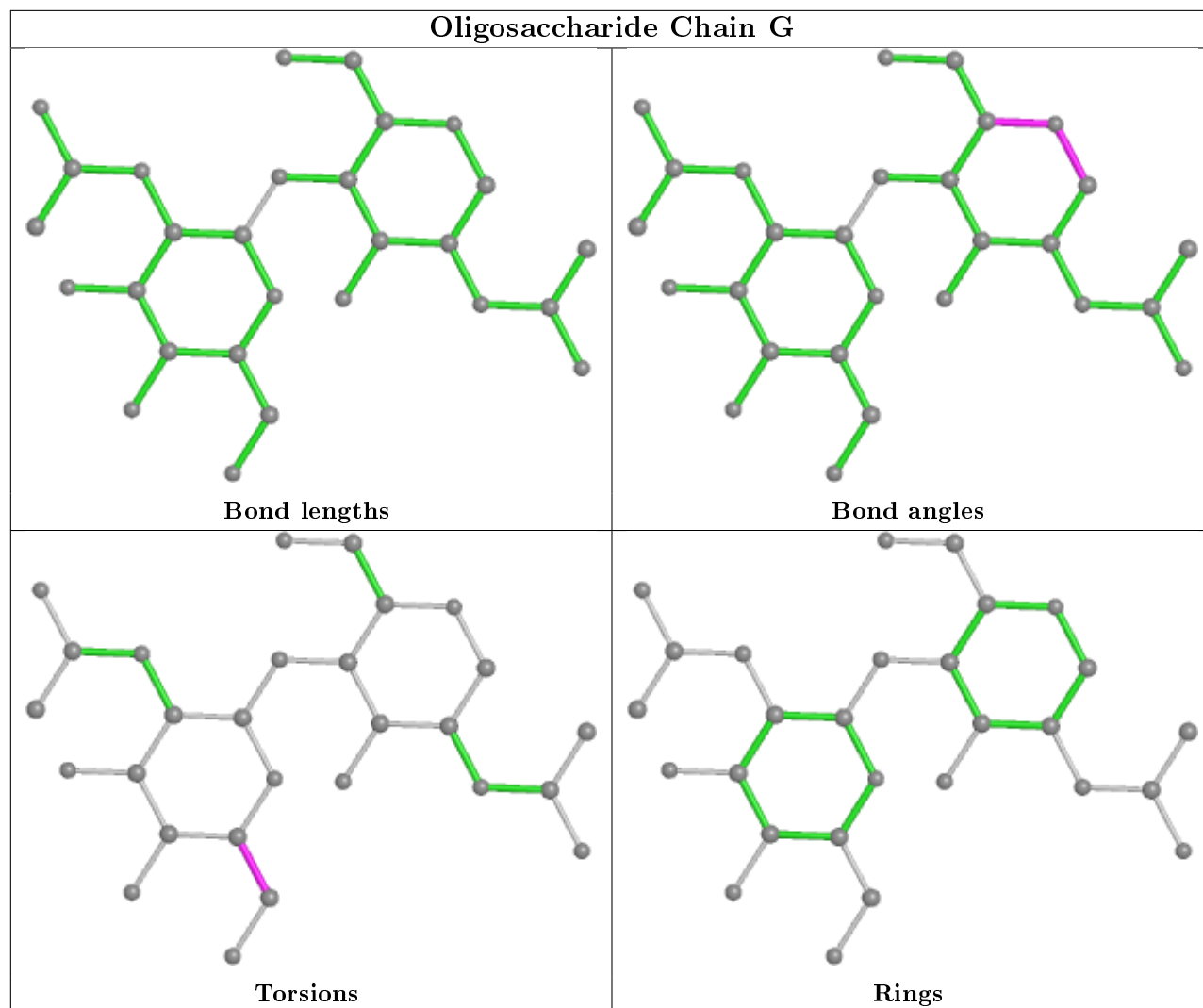
1 monomer is involved in 1 short contact:

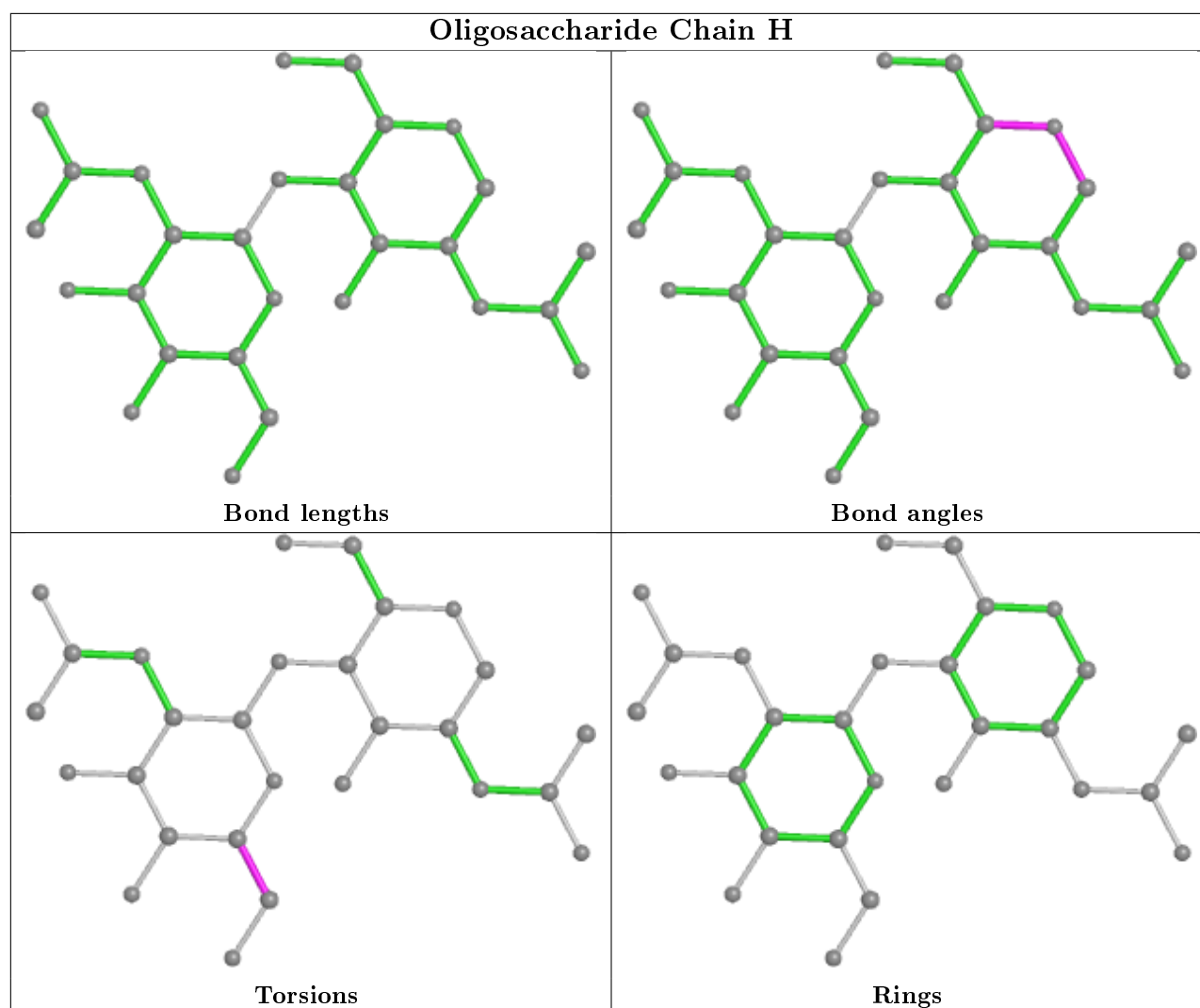
Mol	Chain	Res	Type	Clashes	Symm-Clashes
2	G	2	NAG	1	0

The following is a two-dimensional graphical depiction of Mogul quality analysis of bond lengths, bond angles, torsion angles, and ring geometry for oligosaccharide.









5.6 Ligand geometry ⓘ

18 ligands are modelled in this entry.

In the following table, the Counts columns list the number of bonds (or angles) for which Mogul statistics could be retrieved, the number of bonds (or angles) that are observed in the model and the number of bonds (or angles) that are defined in the Chemical Component Dictionary. The Link column lists molecule types, if any, to which the group is linked. The Z score for a bond length (or angle) is the number of standard deviations the observed value is removed from the expected value. A bond length (or angle) with $|Z| > 2$ is considered an outlier worth inspection. RMSZ is the root-mean-square of all Z scores of the bond lengths (or angles).

Mol	Type	Chain	Res	Link	Bond lengths			Bond angles		
					Counts	RMSZ	$\# Z > 2$	Counts	RMSZ	$\# Z > 2$
5	LM8	B	706	-	17,22,22	0.40	0	18,23,23	0.96	1 (5%)
5	LM8	A	706	-	17,22,22	0.40	0	18,23,23	0.95	1 (5%)
4	COH	C	705	1	31,50,50	4.65	20 (64%)	23,82,82	5.58	16 (69%)

Mol	Type	Chain	Res	Link	Bond lengths			Bond angles		
					Counts	RMSZ	# Z > 2	Counts	RMSZ	# Z > 2
6	BOG	D	707	-	20,20,20	0.46	0	25,25,25	0.59	0
5	LM8	D	706	-	17,22,22	0.40	0	18,23,23	0.96	1 (5%)
4	COH	B	705	1	31,50,50	4.54	20 (64%)	23,82,82	5.27	14 (60%)
6	BOG	B	707	-	20,20,20	0.72	0	25,25,25	1.93	7 (28%)
3	NAG	A	704	1	14,14,15	0.39	0	17,19,21	0.55	0
3	NAG	C	704	1	14,14,15	0.55	0	17,19,21	0.69	0
3	NAG	B	701	1	14,14,15	0.45	0	17,19,21	0.46	0
3	NAG	A	701	1	14,14,15	0.95	1 (7%)	17,19,21	0.62	0
3	NAG	D	701	1	14,14,15	0.71	0	17,19,21	0.51	0
3	NAG	B	704	1	14,14,15	0.37	0	17,19,21	0.45	0
4	COH	A	705	-	31,50,50	4.60	20 (64%)	23,82,82	5.55	16 (69%)
3	NAG	C	701	1	14,14,15	0.47	0	17,19,21	0.47	0
4	COH	D	705	1	31,50,50	4.43	20 (64%)	23,82,82	5.45	15 (65%)
3	NAG	D	704	1	14,14,15	0.20	0	17,19,21	0.46	0
5	LM8	C	706	-	17,22,22	0.40	0	18,23,23	0.96	1 (5%)

In the following table, the Chirals column lists the number of chiral outliers, the number of chiral centers analysed, the number of these observed in the model and the number defined in the Chemical Component Dictionary. Similar counts are reported in the Torsion and Rings columns. '-' means no outliers of that kind were identified.

Mol	Type	Chain	Res	Link	Chirals	Torsions	Rings
5	LM8	B	706	-	-	6/19/21/21	-
5	LM8	A	706	-	-	6/19/21/21	-
4	COH	C	705	1	-	1/8/94/94	-
6	BOG	D	707	-	-	7/11/31/31	0/1/1/1
5	LM8	D	706	-	-	6/19/21/21	-
4	COH	B	705	1	-	3/8/94/94	-
6	BOG	B	707	-	-	8/11/31/31	0/1/1/1
3	NAG	A	704	1	-	2/6/23/26	0/1/1/1
3	NAG	C	704	1	-	0/6/23/26	0/1/1/1
3	NAG	B	701	1	-	4/6/23/26	0/1/1/1
3	NAG	A	701	1	-	3/6/23/26	0/1/1/1
3	NAG	D	701	1	-	3/6/23/26	0/1/1/1
3	NAG	B	704	1	-	2/6/23/26	0/1/1/1
4	COH	A	705	-	-	0/8/94/94	-
3	NAG	C	701	1	-	4/6/23/26	0/1/1/1
4	COH	D	705	1	-	1/8/94/94	-

Continued on next page...

Continued from previous page...

Mol	Type	Chain	Res	Link	Chirals	Torsions	Rings
3	NAG	D	704	1	-	1/6/23/26	0/1/1/1
5	LM8	C	706	-	-	6/19/21/21	-

All (81) bond length outliers are listed below:

Mol	Chain	Res	Type	Atoms	Z	Observed(Å)	Ideal(Å)
4	C	705	COH	C3A-C2A	15.61	1.46	1.34
4	B	705	COH	C3A-C2A	15.19	1.46	1.34
4	D	705	COH	C3A-C2A	14.83	1.46	1.34
4	A	705	COH	C3A-C2A	14.72	1.45	1.34
4	C	705	COH	C1B-C2B	8.65	1.49	1.38
4	A	705	COH	C1B-C2B	8.58	1.49	1.38
4	B	705	COH	C1B-C2B	8.56	1.49	1.38
4	A	705	COH	C1D-C2D	8.28	1.49	1.38
4	D	705	COH	C1B-C2B	8.18	1.49	1.38
4	B	705	COH	C1D-C2D	8.01	1.49	1.38
4	C	705	COH	C1D-C2D	8.00	1.49	1.38
4	D	705	COH	C1D-C2D	7.83	1.48	1.38
4	C	705	COH	C4D-C3D	7.57	1.48	1.38
4	A	705	COH	C4D-C3D	7.44	1.48	1.38
4	D	705	COH	C4D-C3D	7.24	1.48	1.38
4	B	705	COH	C4D-C3D	7.05	1.47	1.38
4	A	705	COH	C1B-NB	6.51	1.37	1.34
4	B	705	COH	C1B-NB	6.11	1.37	1.34
4	C	705	COH	C1B-NB	5.12	1.37	1.34
4	D	705	COH	C1B-NB	5.03	1.37	1.34
4	C	705	COH	CHD-C4C	-4.86	1.44	1.53
4	C	705	COH	CHB-C4A	-4.72	1.45	1.53
4	C	705	COH	CHA-C1A	-4.65	1.45	1.53
4	D	705	COH	CHD-C4C	-4.65	1.45	1.53
4	D	705	COH	CHB-C4A	-4.63	1.45	1.53
4	A	705	COH	CHC-C1C	-4.63	1.45	1.53
4	B	705	COH	CHB-C4A	-4.58	1.45	1.53
4	A	705	COH	CHB-C4A	-4.55	1.45	1.53
4	A	705	COH	C2C-C3C	4.55	1.46	1.35
4	A	705	COH	CHA-C1A	-4.53	1.45	1.53
4	C	705	COH	C2C-C3C	4.49	1.46	1.35
4	B	705	COH	CHA-C1A	-4.49	1.45	1.53
4	A	705	COH	CHD-C4C	-4.47	1.45	1.53
4	C	705	COH	C3B-C2B	4.46	1.46	1.40
4	D	705	COH	CHA-C1A	-4.45	1.45	1.53
4	B	705	COH	CHD-C4C	-4.41	1.45	1.53

Continued on next page...

Continued from previous page...

Mol	Chain	Res	Type	Atoms	Z	Observed(Å)	Ideal(Å)
4	B	705	COH	CHC-C1C	-4.41	1.45	1.53
4	B	705	COH	C2C-C3C	4.39	1.46	1.35
4	C	705	COH	CHC-C1C	-4.39	1.45	1.53
4	D	705	COH	C2C-C3C	4.38	1.46	1.35
4	C	705	COH	C4B-NB	4.34	1.36	1.34
4	D	705	COH	CHC-C1C	-4.28	1.45	1.53
4	A	705	COH	C4B-NB	4.20	1.36	1.34
4	D	705	COH	C3B-C2B	4.17	1.46	1.40
4	A	705	COH	C1D-ND	3.94	1.36	1.34
4	B	705	COH	C3B-C2B	3.83	1.45	1.40
4	B	705	COH	C1D-ND	3.81	1.36	1.34
4	A	705	COH	C3B-C2B	3.76	1.45	1.40
4	B	705	COH	C4B-NB	3.44	1.36	1.34
4	C	705	COH	C3D-C2D	3.26	1.47	1.37
3	A	701	NAG	O5-C1	-3.07	1.38	1.43
4	D	705	COH	C4D-ND	3.04	1.35	1.34
4	D	705	COH	C4B-NB	3.03	1.35	1.34
4	A	705	COH	C3D-C2D	3.01	1.46	1.37
4	C	705	COH	C1D-ND	3.01	1.35	1.34
4	D	705	COH	C3D-C2D	2.98	1.46	1.37
4	B	705	COH	C3D-C2D	2.92	1.46	1.37
4	D	705	COH	C4C-C3C	-2.74	1.46	1.51
4	C	705	COH	CHC-C4B	-2.73	1.44	1.51
4	A	705	COH	C4D-ND	2.66	1.35	1.34
4	C	705	COH	C4C-C3C	-2.64	1.47	1.51
4	D	705	COH	CHA-C4D	-2.59	1.44	1.51
4	A	705	COH	CHA-C4D	-2.58	1.45	1.51
4	A	705	COH	CHC-C4B	-2.57	1.45	1.51
4	C	705	COH	CHA-C4D	-2.57	1.45	1.51
4	B	705	COH	CHC-C4B	-2.53	1.45	1.51
4	A	705	COH	C4C-C3C	-2.52	1.47	1.51
4	C	705	COH	C4D-ND	2.51	1.35	1.34
4	D	705	COH	CHD-C1D	-2.50	1.45	1.51
4	B	705	COH	CHA-C4D	-2.46	1.45	1.51
4	A	705	COH	CHD-C1D	-2.42	1.45	1.51
4	D	705	COH	CHB-C1B	-2.33	1.45	1.51
4	C	705	COH	CHD-C1D	-2.32	1.45	1.51
4	D	705	COH	CHC-C4B	-2.31	1.45	1.51
4	B	705	COH	C4D-ND	2.28	1.35	1.34
4	B	705	COH	CHB-C1B	-2.28	1.45	1.51
4	B	705	COH	C4C-C3C	-2.27	1.47	1.51
4	D	705	COH	C1D-ND	2.15	1.35	1.34

Continued on next page...

Continued from previous page...

Mol	Chain	Res	Type	Atoms	Z	Observed(Å)	Ideal(Å)
4	A	705	COH	CHB-C1B	-2.12	1.46	1.51
4	C	705	COH	CHB-C1B	-2.10	1.46	1.51
4	B	705	COH	CHD-C1D	-2.10	1.46	1.51

All (72) bond angle outliers are listed below:

Mol	Chain	Res	Type	Atoms	Z	Observed(°)	Ideal(°)
4	A	705	COH	C3C-C4C-NC	10.75	117.31	109.03
4	C	705	COH	C3C-C4C-NC	10.59	117.18	109.03
4	D	705	COH	C3C-C4C-NC	10.20	116.88	109.03
4	B	705	COH	C3C-C4C-NC	9.99	116.72	109.03
4	D	705	COH	CHD-C4C-NC	9.46	124.05	110.12
4	A	705	COH	CHD-C4C-NC	9.32	123.83	110.12
4	C	705	COH	CHD-C4C-NC	9.24	123.72	110.12
4	A	705	COH	C3D-C4D-ND	9.21	119.55	109.94
4	B	705	COH	CHD-C4C-NC	9.06	123.45	110.12
4	C	705	COH	C3D-C4D-ND	8.93	119.26	109.94
4	D	705	COH	C3D-C4D-ND	8.84	119.17	109.94
4	C	705	COH	CHC-C4B-C3B	-8.68	117.89	129.55
4	C	705	COH	CHC-C1C-NC	8.65	122.85	110.12
4	B	705	COH	C3D-C4D-ND	8.59	118.91	109.94
4	B	705	COH	CHC-C1C-NC	8.40	122.49	110.12
4	A	705	COH	CHA-C1A-NA	8.40	122.49	110.12
4	A	705	COH	CHB-C4A-NA	8.40	122.48	110.12
4	B	705	COH	CHB-C4A-NA	8.38	122.45	110.12
4	D	705	COH	CHA-C1A-NA	8.32	122.37	110.12
4	C	705	COH	CHB-C4A-NA	8.32	122.36	110.12
4	C	705	COH	CHA-C1A-NA	8.28	122.31	110.12
4	D	705	COH	CHB-C4A-NA	8.28	122.31	110.12
4	D	705	COH	CHC-C1C-NC	8.26	122.28	110.12
4	A	705	COH	CHC-C1C-NC	8.20	122.20	110.12
4	A	705	COH	CHC-C4B-C3B	-8.14	118.61	129.55
4	B	705	COH	CHC-C4B-C3B	-7.65	119.26	129.55
4	B	705	COH	CHA-C1A-NA	7.57	121.26	110.12
4	D	705	COH	CHC-C4B-C3B	-7.46	119.52	129.55
4	D	705	COH	CHB-C1B-C2B	-5.89	119.25	129.45
4	C	705	COH	CHD-C1D-C2D	-5.88	119.28	129.45
4	B	705	COH	CHB-C1B-C2B	-5.61	119.73	129.45
4	A	705	COH	CHD-C1D-C2D	-5.47	119.97	129.45
4	A	705	COH	CHB-C1B-C2B	-5.41	120.09	129.45
4	D	705	COH	CHD-C1D-C2D	-5.33	120.22	129.45
4	C	705	COH	CHB-C1B-C2B	-5.31	120.25	129.45

Continued on next page...

Continued from previous page...

Mol	Chain	Res	Type	Atoms	Z	Observed(°)	Ideal(°)
4	B	705	COH	CHD-C1D-C2D	-5.09	120.64	129.45
4	A	705	COH	CBD-CAD-C3D	-4.96	103.33	112.49
4	D	705	COH	CBD-CAD-C3D	-4.90	103.44	112.49
4	B	705	COH	CBD-CAD-C3D	-4.87	103.50	112.49
6	B	707	BOG	C1-O5-C5	4.82	123.14	113.69
4	C	705	COH	CBD-CAD-C3D	-4.31	104.54	112.49
6	B	707	BOG	O5-C5-C4	4.08	117.11	109.69
4	A	705	COH	C1D-C2D-C3D	-3.99	101.57	105.81
4	D	705	COH	C1D-C2D-C3D	-3.73	101.83	105.81
4	B	705	COH	C1D-C2D-C3D	-3.61	101.97	105.81
4	C	705	COH	C1D-C2D-C3D	-3.58	102.00	105.81
4	D	705	COH	CMB-C2B-C3B	3.47	131.16	124.68
4	C	705	COH	CBA-CAA-C2A	-3.32	108.48	114.35
4	A	705	COH	CAA-CBA-CGA	-3.31	107.12	112.67
4	C	705	COH	C4D-C3D-C2D	-3.23	101.12	105.93
4	B	705	COH	CBA-CAA-C2A	-3.13	108.81	114.35
4	D	705	COH	CBA-CAA-C2A	-3.08	108.89	114.35
4	D	705	COH	C4D-C3D-C2D	-3.05	101.39	105.93
5	C	706	LM8	C23-C08-C09	-3.02	104.91	110.91
5	D	706	LM8	C23-C08-C09	-3.02	104.91	110.91
4	C	705	COH	CAA-CBA-CGA	-3.01	107.61	112.67
5	B	706	LM8	C23-C08-C09	-3.01	104.91	110.91
5	A	706	LM8	C23-C08-C09	-2.99	104.96	110.91
4	A	705	COH	C4D-C3D-C2D	-2.93	101.56	105.93
4	C	705	COH	CMD-C2D-C3D	2.92	130.44	124.94
4	C	705	COH	CMB-C2B-C3B	2.86	130.03	124.68
4	A	705	COH	CBA-CAA-C2A	-2.84	109.33	114.35
4	B	705	COH	C4D-C3D-C2D	-2.77	101.80	105.93
6	B	707	BOG	O4-C4-C3	-2.64	104.23	110.35
6	B	707	BOG	C3-C4-C5	2.63	114.94	110.24
6	B	707	BOG	O1-C1-C2	-2.63	104.20	108.30
4	A	705	COH	CMB-C2B-C3B	2.56	129.48	124.68
6	B	707	BOG	O5-C1-C2	2.52	115.68	110.35
4	B	705	COH	CMB-C2B-C3B	2.51	129.37	124.68
4	D	705	COH	CMD-C2D-C3D	2.38	129.42	124.94
4	A	705	COH	CMD-C2D-C3D	2.23	129.14	124.94
6	B	707	BOG	O5-C1-O1	-2.05	105.11	109.97

There are no chirality outliers.

All (63) torsion outliers are listed below:

Mol	Chain	Res	Type	Atoms
5	B	706	LM8	C07-C08-C09-C10
5	B	706	LM8	C12-C13-C19-C20
5	A	706	LM8	C07-C08-C09-C10
5	A	706	LM8	C12-C13-C19-C20
5	D	706	LM8	C07-C08-C09-C10
5	D	706	LM8	C12-C13-C19-C20
4	B	705	COH	C2C-C3C-CAC-CBC
4	B	705	COH	C4C-C3C-CAC-CBC
6	B	707	BOG	C2-C1-O1-C1'
6	B	707	BOG	O5-C1-O1-C1'
5	C	706	LM8	C07-C08-C09-C10
5	C	706	LM8	C12-C13-C19-C20
3	B	701	NAG	O5-C5-C6-O6
6	D	707	BOG	O5-C5-C6-O6
6	B	707	BOG	O5-C5-C6-O6
3	A	701	NAG	C1-C2-N2-C7
3	D	701	NAG	C1-C2-N2-C7
3	B	701	NAG	C4-C5-C6-O6
6	D	707	BOG	C4-C5-C6-O6
4	B	705	COH	C2A-CAA-CBA-CGA
4	D	705	COH	C2A-CAA-CBA-CGA
6	B	707	BOG	O1-C1'-C2'-C3'
3	B	701	NAG	C1-C2-N2-C7
6	B	707	BOG	C4-C5-C6-O6
3	C	701	NAG	O5-C5-C6-O6
5	B	706	LM8	C14-C15-C16-C17
5	A	706	LM8	C14-C15-C16-C17
5	D	706	LM8	C14-C15-C16-C17
5	C	706	LM8	C14-C15-C16-C17
6	D	707	BOG	C1'-C2'-C3'-C4'
6	B	707	BOG	C1'-C2'-C3'-C4'
3	C	701	NAG	C1-C2-N2-C7
3	A	704	NAG	C4-C5-C6-O6
3	B	704	NAG	C4-C5-C6-O6
6	B	707	BOG	C2'-C1'-O1-C1
5	B	706	LM8	C15-C16-C17-C18
5	A	706	LM8	C15-C16-C17-C18
5	D	706	LM8	C15-C16-C17-C18
5	C	706	LM8	C15-C16-C17-C18
5	B	706	LM8	C04-C05-C06-C07
5	A	706	LM8	C04-C05-C06-C07
5	D	706	LM8	C04-C05-C06-C07
5	C	706	LM8	C04-C05-C06-C07

Continued on next page...

Continued from previous page...

Mol	Chain	Res	Type	Atoms
3	A	704	NAG	O5-C5-C6-O6
6	D	707	BOG	C5'-C6'-C7'-C8'
3	B	704	NAG	O5-C5-C6-O6
6	B	707	BOG	C3'-C4'-C5'-C6'
6	D	707	BOG	C3'-C4'-C5'-C6'
3	D	701	NAG	O5-C5-C6-O6
4	C	705	COH	C2A-CAA-CBA-CGA
3	C	701	NAG	C4-C5-C6-O6
3	B	701	NAG	C3-C2-N2-C7
3	A	701	NAG	C3-C2-N2-C7
5	B	706	LM8	C11-C12-C13-C19
5	A	706	LM8	C11-C12-C13-C19
5	D	706	LM8	C11-C12-C13-C19
5	C	706	LM8	C11-C12-C13-C19
3	A	701	NAG	O5-C5-C6-O6
3	D	701	NAG	C3-C2-N2-C7
3	C	701	NAG	C3-C2-N2-C7
6	D	707	BOG	C2'-C3'-C4'-C5'
3	D	704	NAG	C4-C5-C6-O6
6	D	707	BOG	C4'-C5'-C6'-C7'

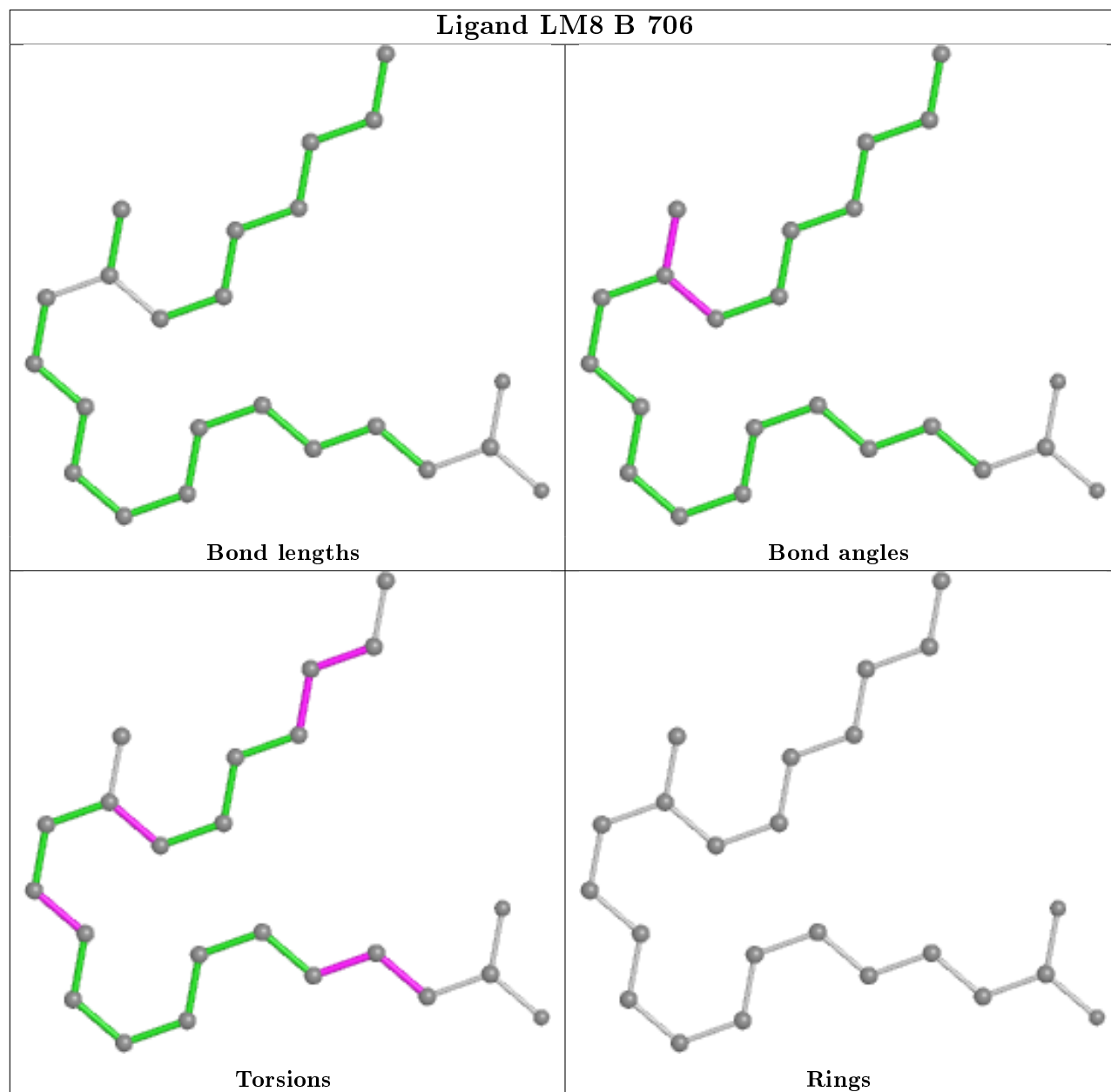
There are no ring outliers.

11 monomers are involved in 38 short contacts:

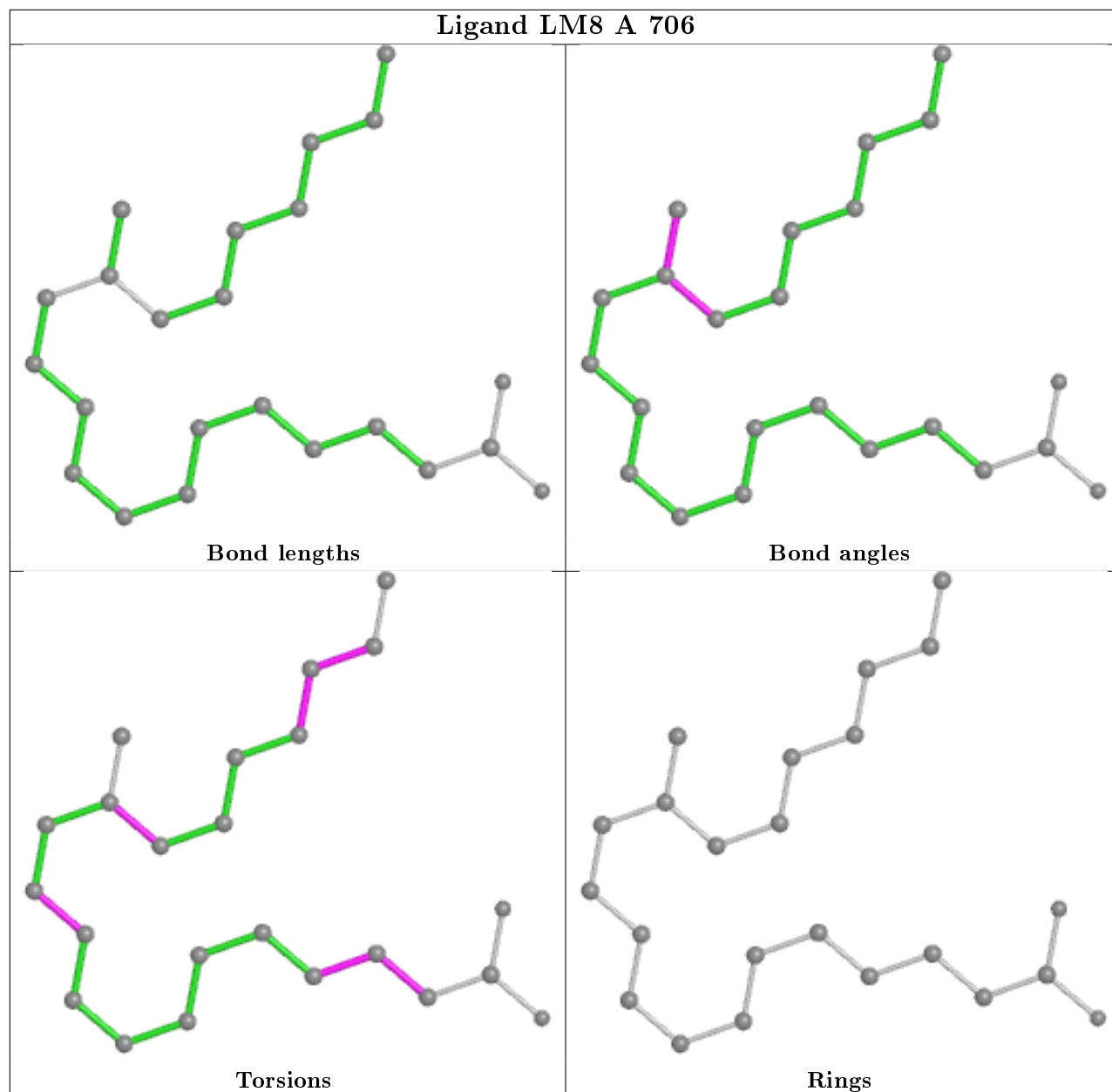
Mol	Chain	Res	Type	Clashes	Symm-Clashes
5	B	706	LM8	1	0
5	A	706	LM8	3	0
4	C	705	COH	5	0
6	D	707	BOG	2	0
5	D	706	LM8	3	0
4	B	705	COH	2	0
6	B	707	BOG	7	0
3	B	701	NAG	1	0
4	A	705	COH	5	0
4	D	705	COH	6	0
5	C	706	LM8	3	0

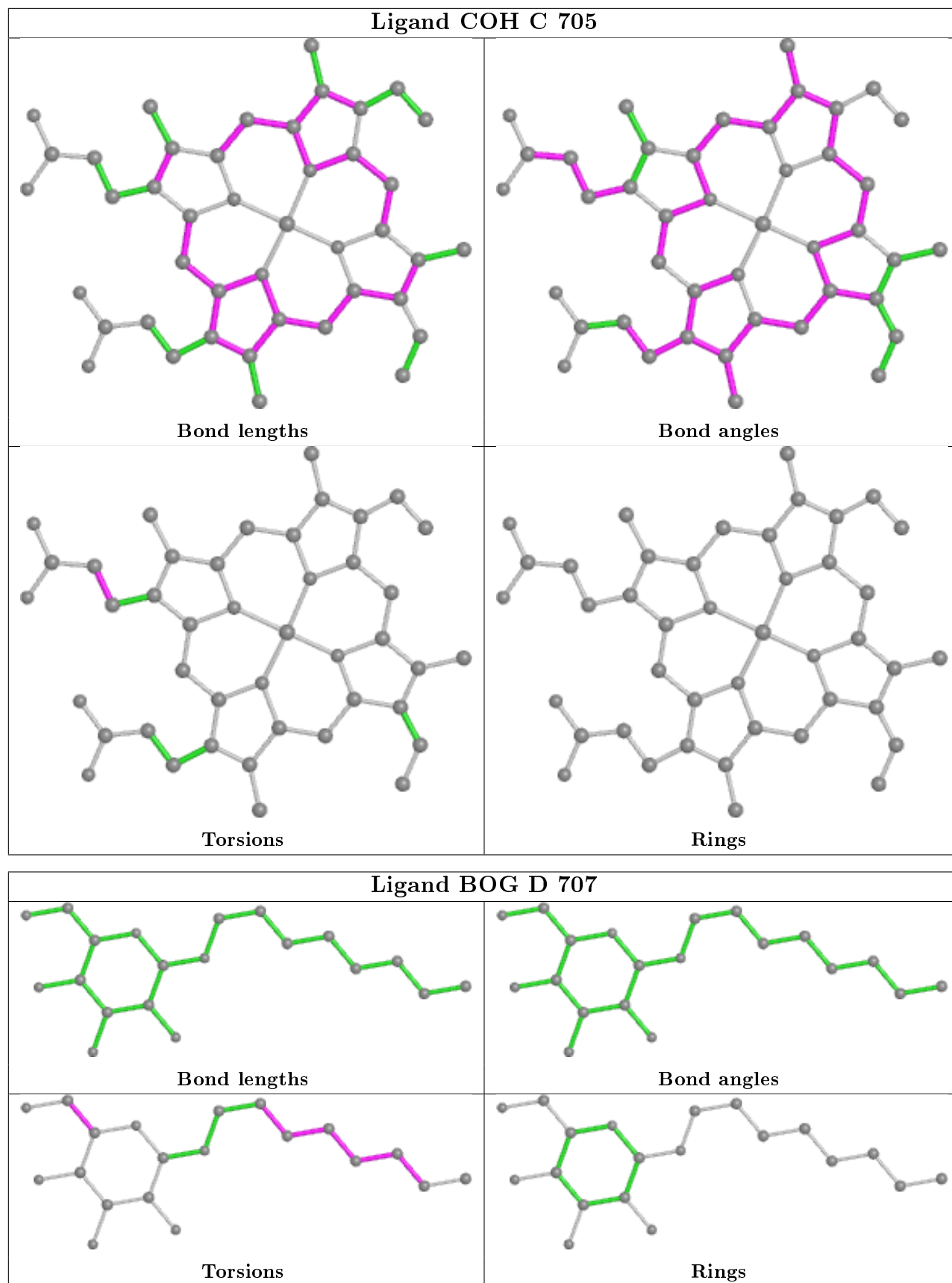
The following is a two-dimensional graphical depiction of Mogul quality analysis of bond lengths, bond angles, torsion angles, and ring geometry for all instances of the Ligand of Interest. In addition, ligands with molecular weight > 250 and outliers as shown on the validation Tables will also be included. For torsion angles, if less than 5% of the Mogul distribution of torsion angles is within 10 degrees of the torsion angle in question, then that torsion angle is considered an outlier.

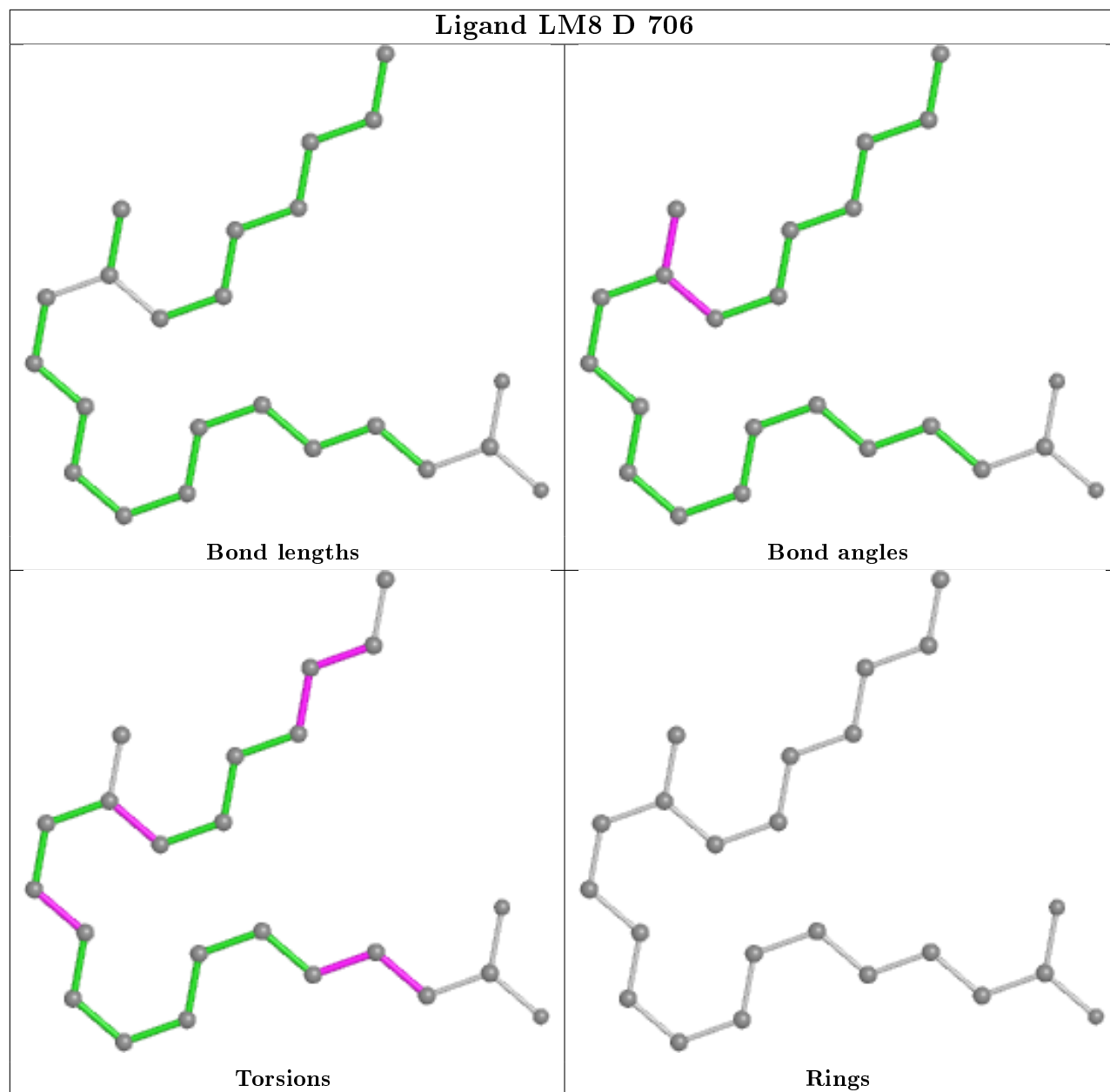
Any bond that is central to one or more torsion angles identified as an outlier by Mogul will be highlighted in the graph. For rings, the root-mean-square deviation (RMSD) between the ring in question and similar rings identified by Mogul is calculated over all ring torsion angles. If the average RMSD is greater than 60 degrees and the minimal RMSD between the ring in question and any Mogul-identified rings is also greater than 60 degrees, then that ring is considered an outlier. The outliers are highlighted in purple. The color gray indicates Mogul did not find sufficient equivalents in the CSD to analyse the geometry.

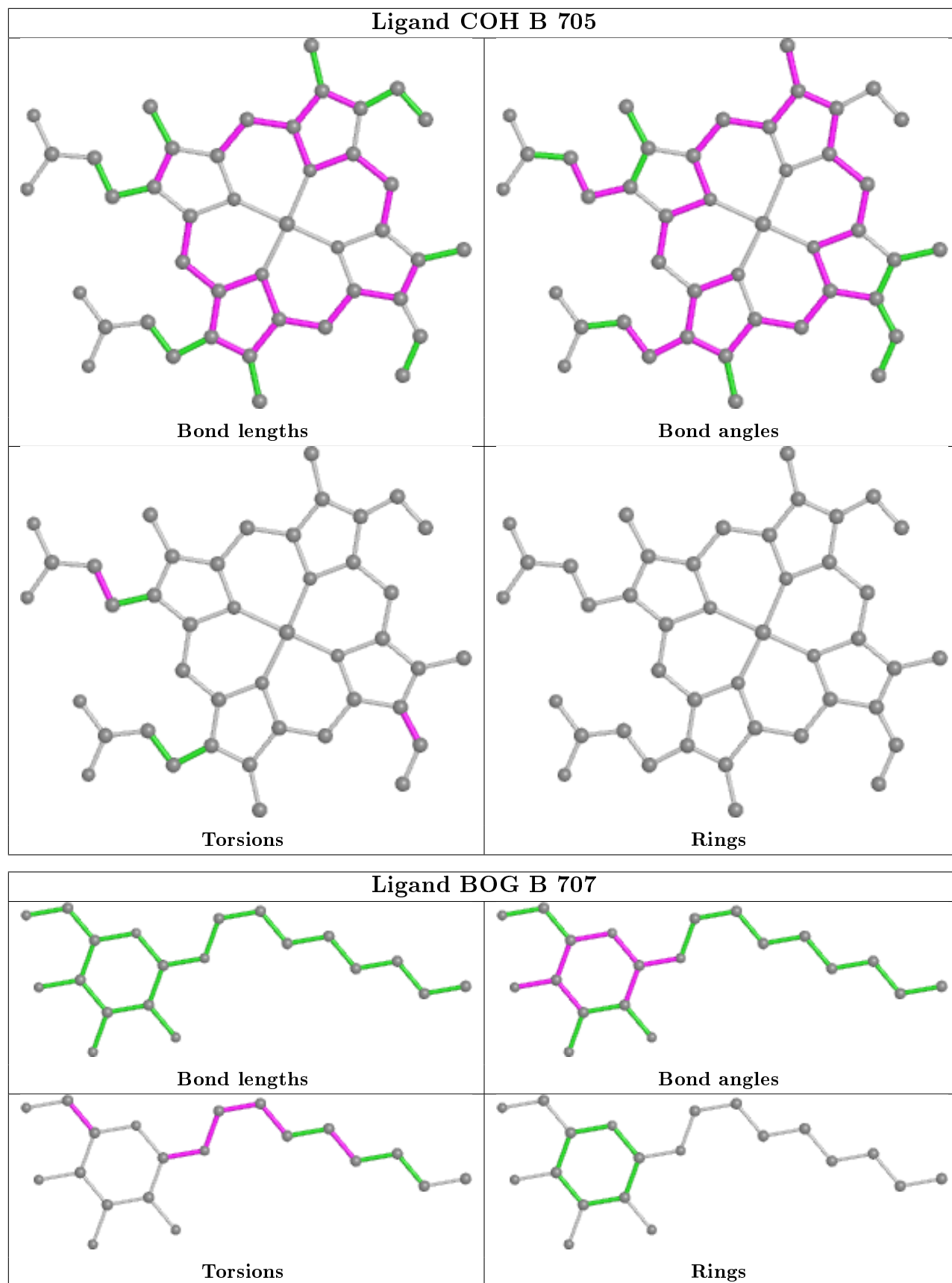


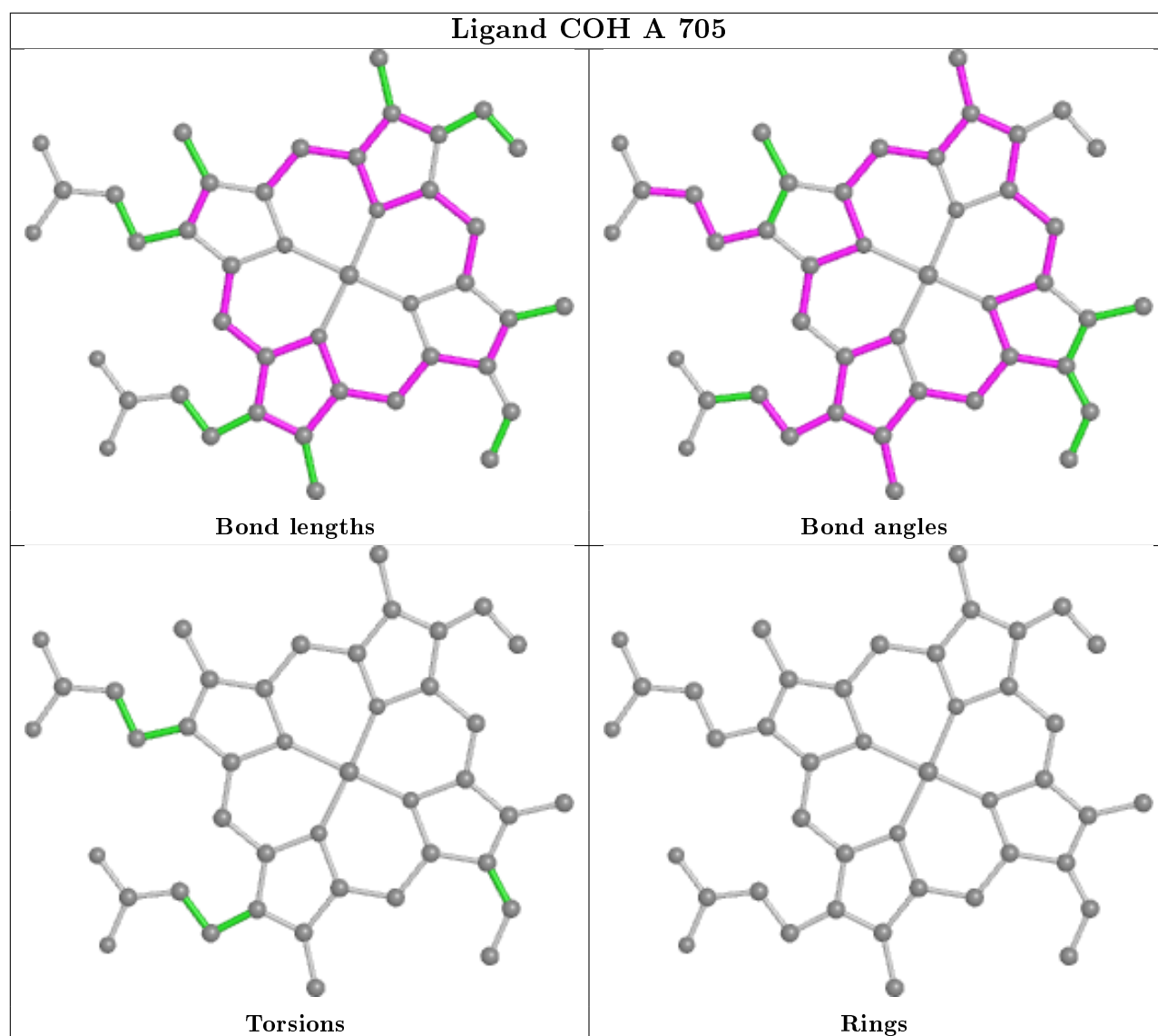
Ligand LM8 A 706

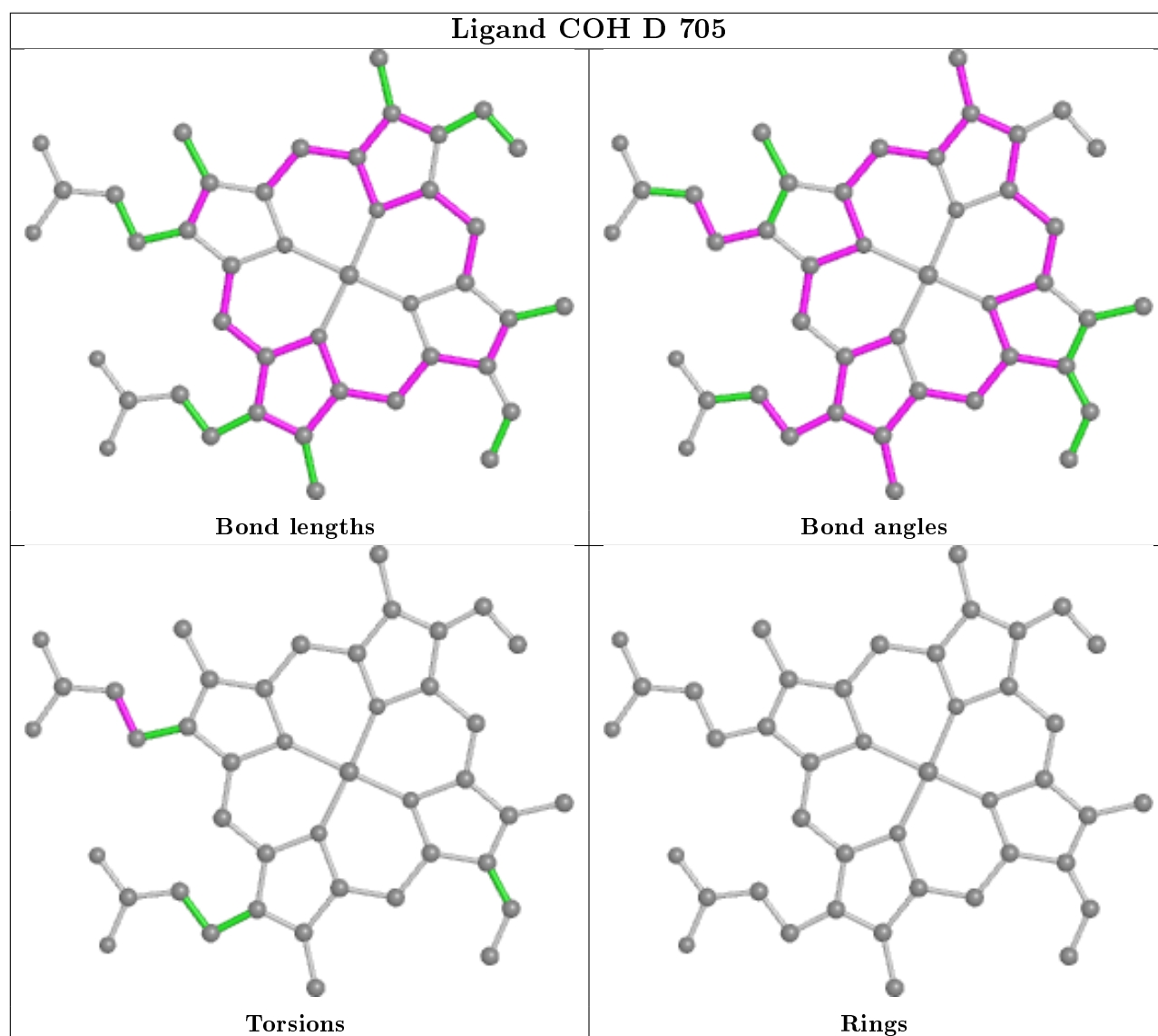


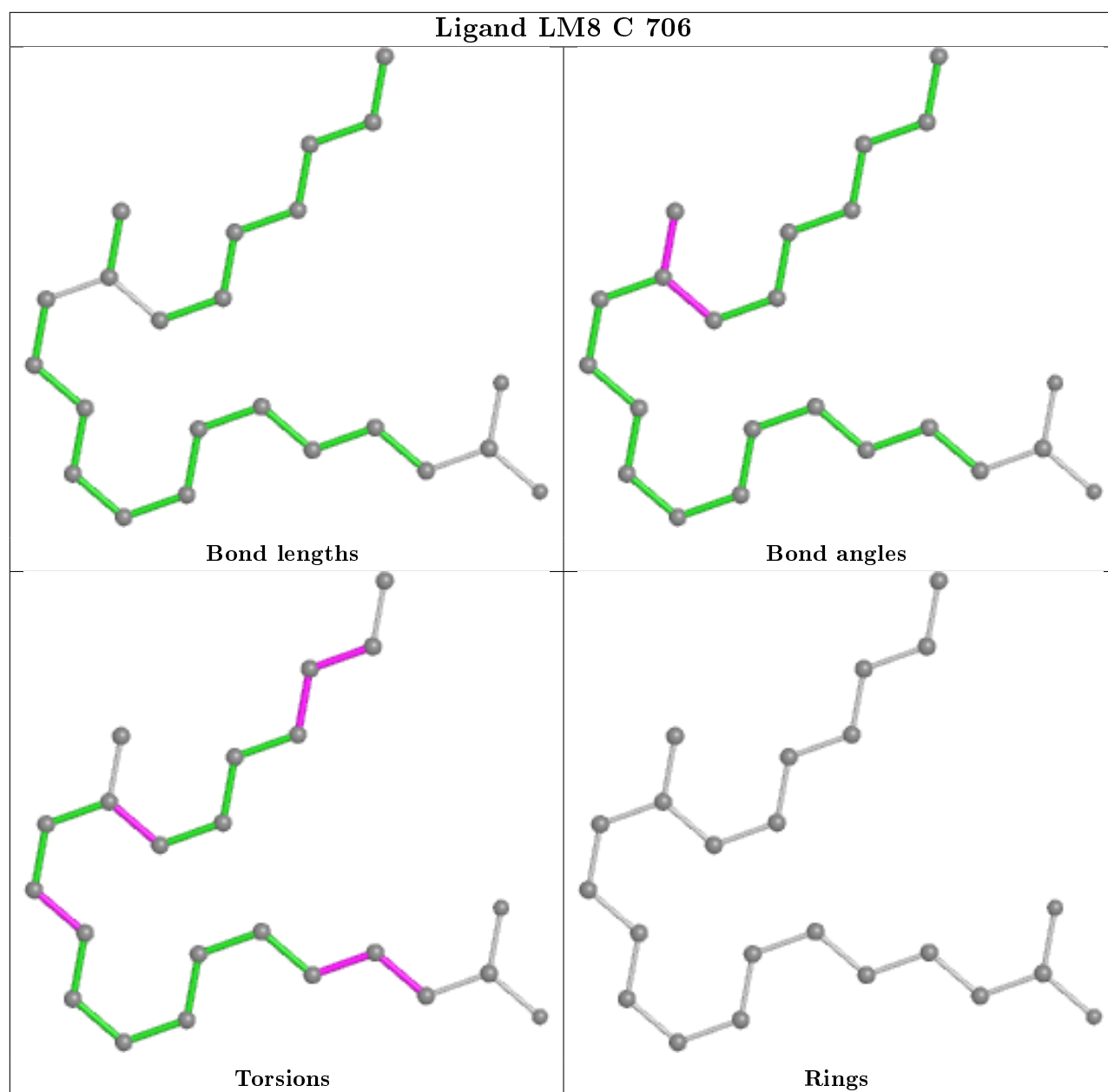












5.7 Other polymers [i](#)

There are no such residues in this entry.

5.8 Polymer linkage issues [i](#)

There are no chain breaks in this entry.

6 Fit of model and data [i](#)

6.1 Protein, DNA and RNA chains [i](#)

In the following table, the column labelled ‘#RSRZ> 2’ contains the number (and percentage) of RSRZ outliers, followed by percent RSRZ outliers for the chain as percentile scores relative to all X-ray entries and entries of similar resolution. The OWAB column contains the minimum, median, 95th percentile and maximum values of the occupancy-weighted average B-factor per residue. The column labelled ‘Q< 0.9’ lists the number of (and percentage) of residues with an average occupancy less than 0.9.

Mol	Chain	Analysed	<RSRZ>	#RSRZ>2	OWAB(Å ²)	Q<0.9
1	A	552/587 (94%)	-0.23	1 (0%) 95 96	27, 43, 72, 102	0
1	B	552/587 (94%)	-0.24	2 (0%) 92 94	24, 40, 67, 96	0
1	C	552/587 (94%)	-0.23	0 100 100	25, 40, 66, 97	0
1	D	552/587 (94%)	-0.15	1 (0%) 95 96	26, 45, 71, 98	0
All	All	2208/2348 (94%)	-0.21	4 (0%) 95 96	24, 42, 69, 102	0

All (4) RSRZ outliers are listed below:

Mol	Chain	Res	Type	RSRZ
1	D	122	TYR	2.4
1	B	583	GLN	2.3
1	A	122	TYR	2.2
1	B	107	PHE	2.1

6.2 Non-standard residues in protein, DNA, RNA chains [i](#)

There are no non-standard protein/DNA/RNA residues in this entry.

6.3 Carbohydrates [i](#)

In the following table, the Atoms column lists the number of modelled atoms in the group and the number defined in the chemical component dictionary. The B-factors column lists the minimum, median, 95th percentile and maximum values of B factors of atoms in the group. The column labelled ‘Q< 0.9’ lists the number of atoms with occupancy less than 0.9.

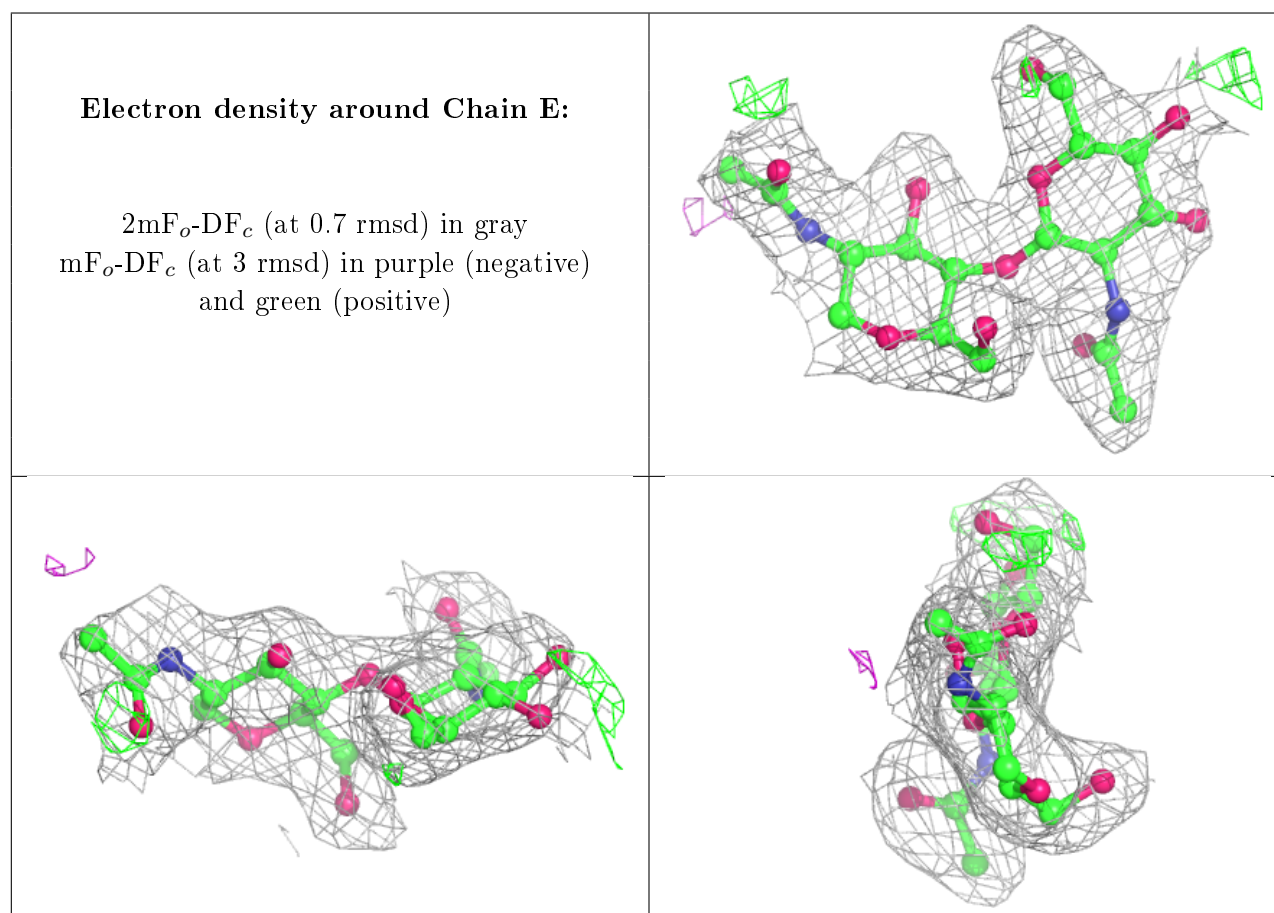
Mol	Type	Chain	Res	Atoms	RSCC	RSR	B-factors(Å ²)	Q<0.9
2	NAG	G	2	14/15	0.89	0.12	37,66,74,83	0
2	NAG	E	2	14/15	0.92	0.10	47,65,80,85	0
2	NAG	H	2	14/15	0.92	0.13	50,66,75,76	0

Continued on next page...

Continued from previous page...

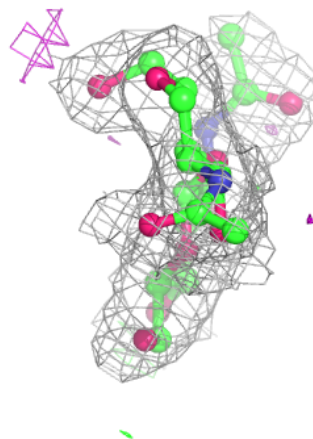
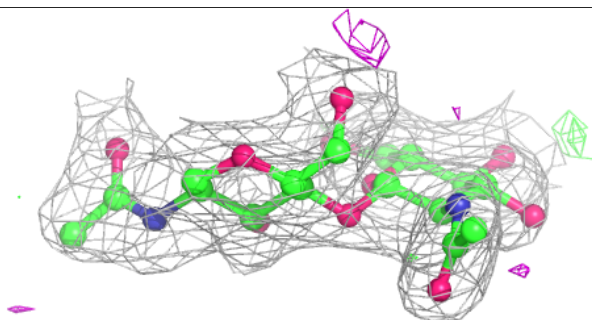
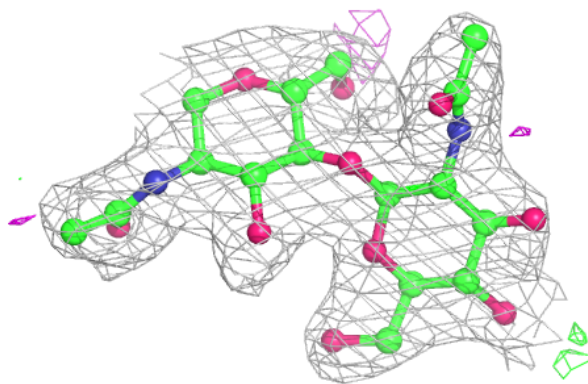
Mol	Type	Chain	Res	Atoms	RSCC	RSR	B-factors(\AA^2)	Q<0.9
2	NAG	E	1	14/15	0.94	0.12	36,40,50,55	0
2	NAG	F	2	14/15	0.95	0.10	43,52,66,74	0
2	NAG	F	1	14/15	0.96	0.11	30,38,41,49	0
2	NAG	H	1	14/15	0.97	0.09	31,40,44,45	0
2	NAG	G	1	14/15	0.97	0.11	32,44,51,58	0

The following is a graphical depiction of the model fit to experimental electron density for oligosaccharide. Each fit is shown from different orientation to approximate a three-dimensional view.



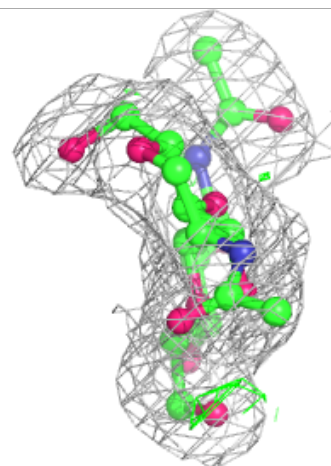
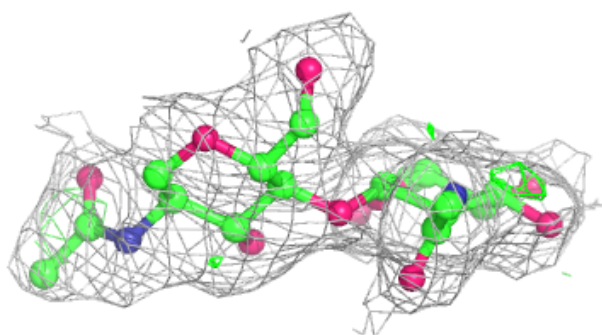
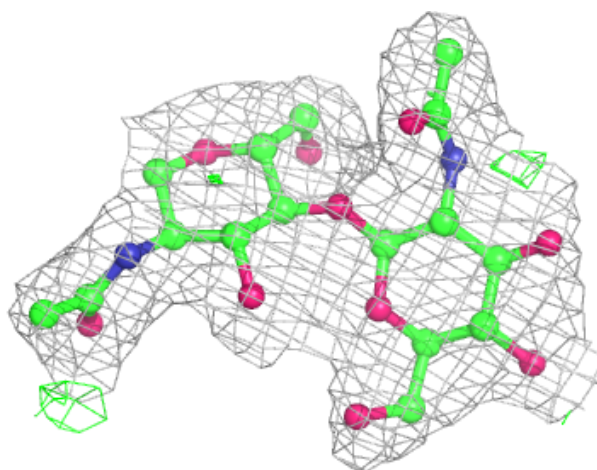
Electron density around Chain F:

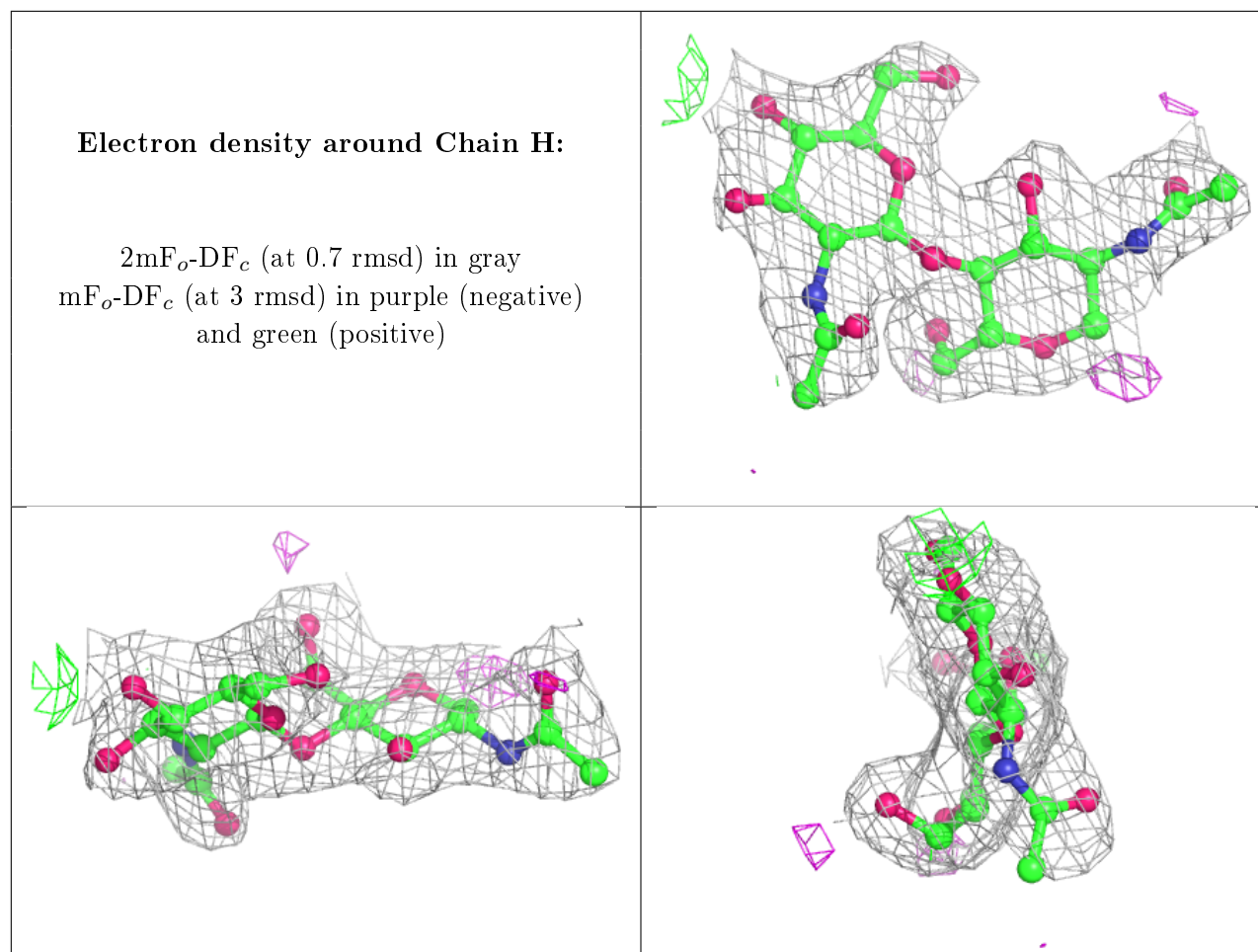
$2mF_o - DF_c$ (at 0.7 rmsd) in gray
 $mF_o - DF_c$ (at 3 rmsd) in purple (negative)
and green (positive)



Electron density around Chain G:

$2mF_o-DF_c$ (at 0.7 rmsd) in gray
 mF_o-DF_c (at 3 rmsd) in purple (negative)
and green (positive)





6.4 Ligands ⓘ

In the following table, the Atoms column lists the number of modelled atoms in the group and the number defined in the chemical component dictionary. The B-factors column lists the minimum, median, 95th percentile and maximum values of B factors of atoms in the group. The column labelled 'Q< 0.9' lists the number of atoms with occupancy less than 0.9.

Mol	Type	Chain	Res	Atoms	RSCC	RSR	B-factors(Å ²)	Q<0.9
4	COH	D	705	43/43	0.75	0.17	37,49,89,252	0
3	NAG	A	701	14/15	0.76	0.20	59,83,97,97	0
6	BOG	D	707	20/20	0.81	0.23	59,71,85,90	0
3	NAG	D	701	14/15	0.82	0.18	61,79,87,89	0
3	NAG	C	701	14/15	0.84	0.18	66,82,88,94	0
3	NAG	B	701	14/15	0.84	0.18	61,77,91,92	0
5	LM8	D	706	23/23	0.86	0.25	51,61,69,71	0
5	LM8	B	706	23/23	0.86	0.24	46,56,70,72	0
5	LM8	C	706	23/23	0.88	0.25	43,55,73,77	0
3	NAG	C	704	14/15	0.89	0.10	39,57,67,75	0
3	NAG	A	704	14/15	0.90	0.17	48,69,89,91	0

Continued on next page...

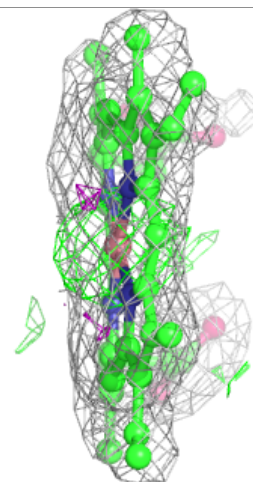
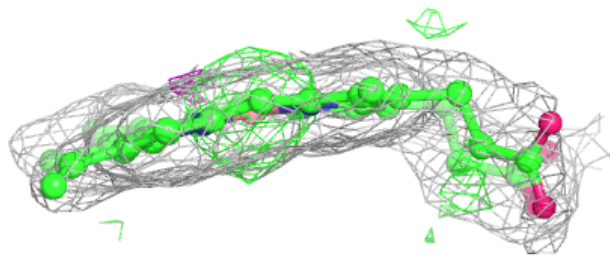
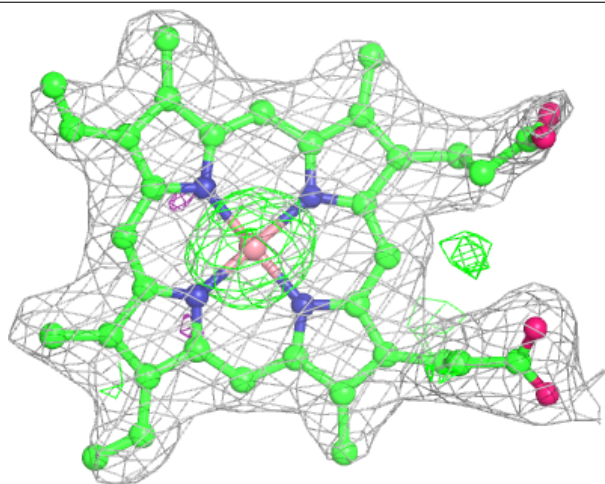
Continued from previous page...

Mol	Type	Chain	Res	Atoms	RSCC	RSR	B-factors(\AA^2)	Q<0.9
3	NAG	B	704	14/15	0.90	0.15	49,64,75,77	0
3	NAG	D	704	14/15	0.90	0.16	52,69,79,89	0
5	LM8	A	706	23/23	0.91	0.20	50,57,66,68	0
6	BOG	B	707	20/20	0.93	0.13	44,72,79,83	0
4	COH	A	705	43/43	0.94	0.16	33,51,71,84	0
4	COH	B	705	43/43	0.95	0.15	35,46,83,103	0
4	COH	C	705	43/43	0.97	0.14	29,41,69,90	0

The following is a graphical depiction of the model fit to experimental electron density of all instances of the Ligand of Interest. In addition, ligands with molecular weight > 250 and outliers as shown on the geometry validation Tables will also be included. Each fit is shown from different orientation to approximate a three-dimensional view.

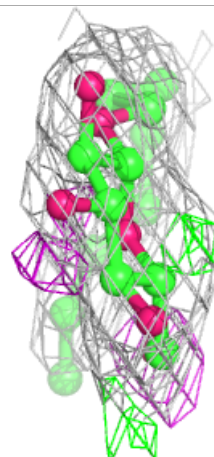
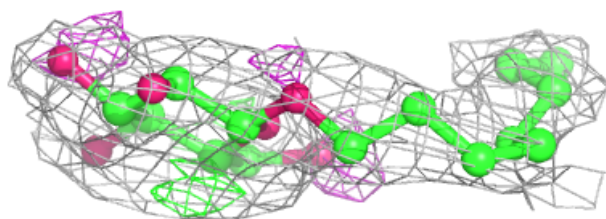
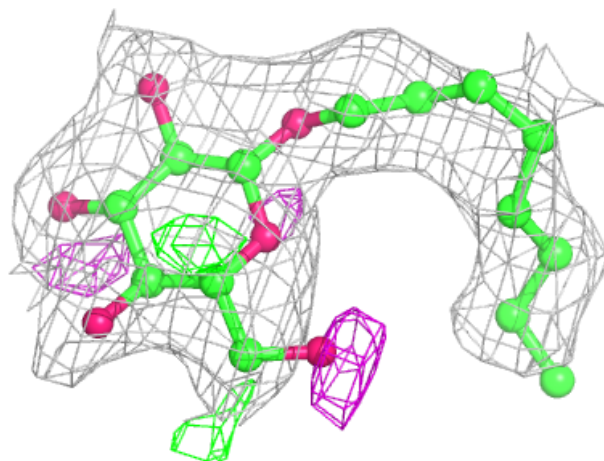
Electron density around COH D 705:

2mF_o-DF_c (at 0.7 rmsd) in gray
mF_o-DF_c (at 3 rmsd) in purple (negative)
and green (positive)



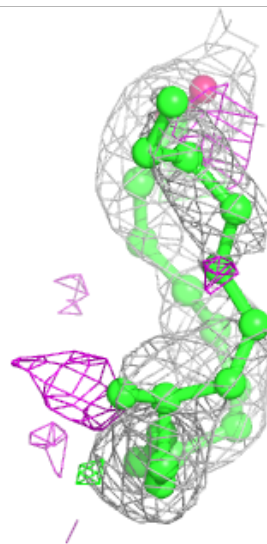
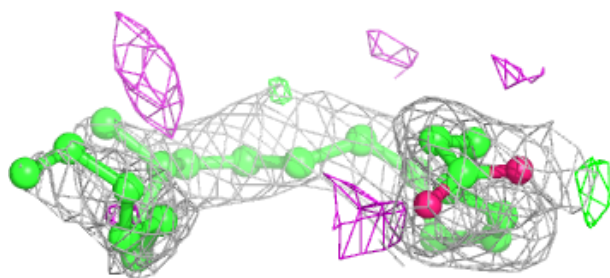
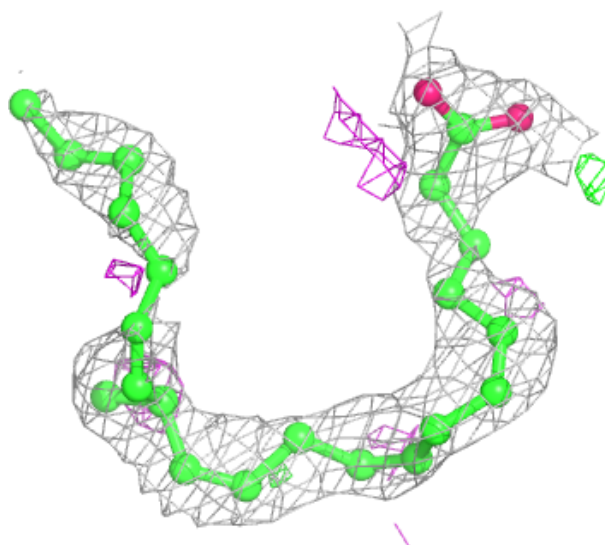
Electron density around BOG D 707:

$2mF_o-DF_c$ (at 0.7 rmsd) in gray
 mF_o-DF_c (at 3 rmsd) in purple (negative)
and green (positive)



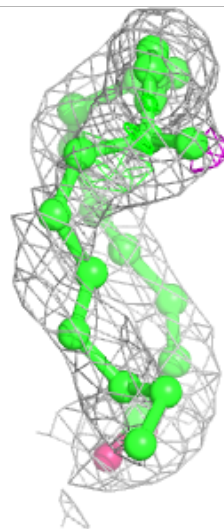
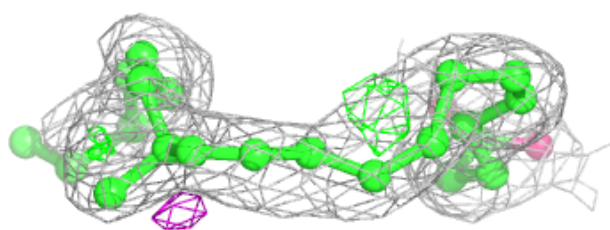
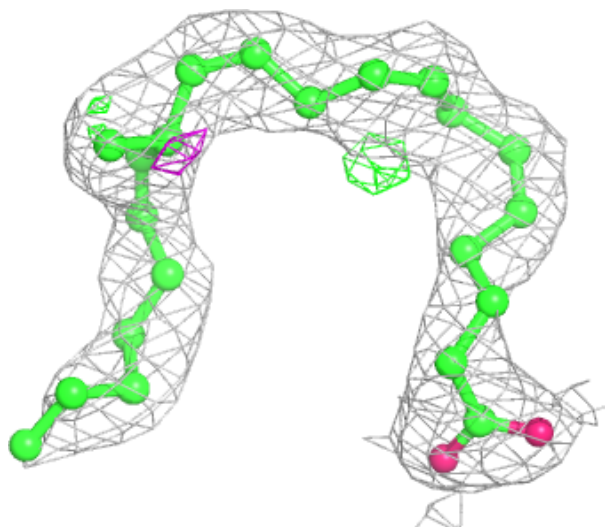
Electron density around LM8 D 706:

$2mF_o-DF_c$ (at 0.7 rmsd) in gray
 mF_o-DF_c (at 3 rmsd) in purple (negative)
and green (positive)



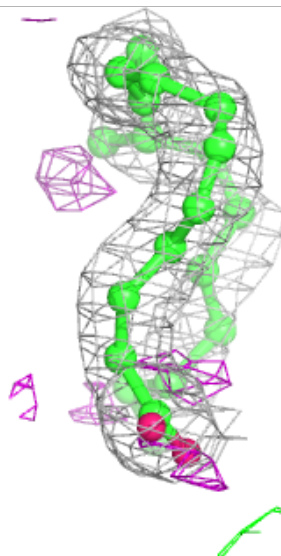
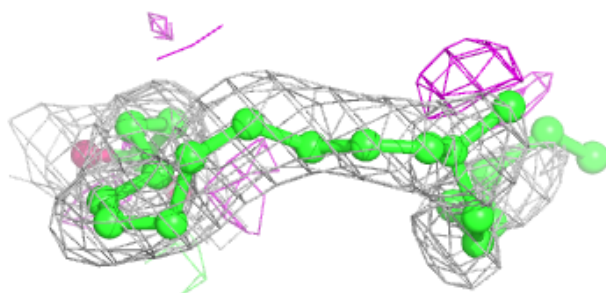
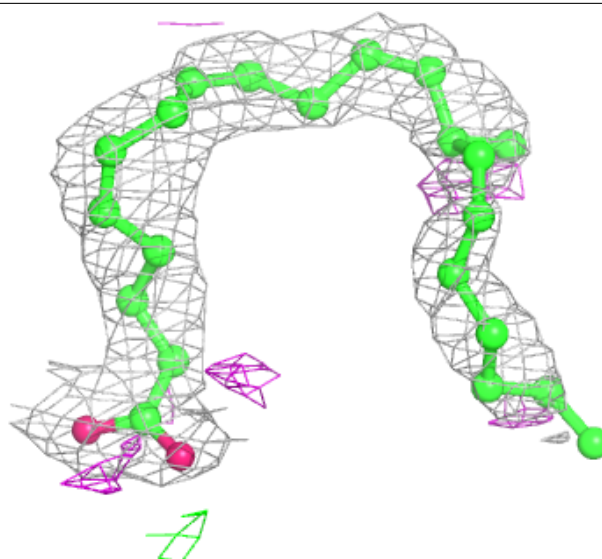
Electron density around LM8 B 706:

$2mF_o-DF_c$ (at 0.7 rmsd) in gray
 mF_o-DF_c (at 3 rmsd) in purple (negative)
and green (positive)



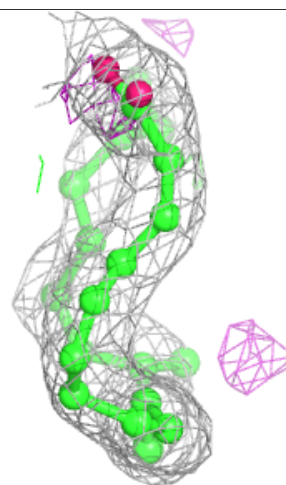
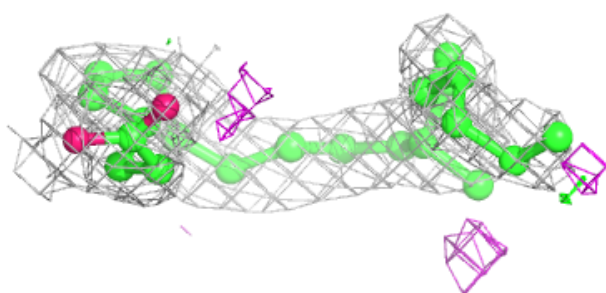
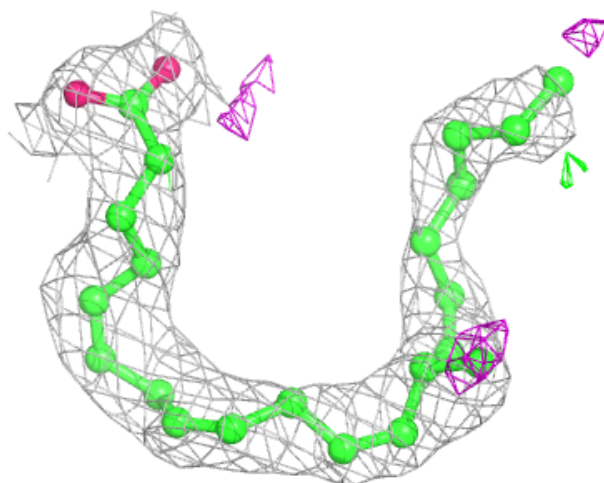
Electron density around LM8 C 706:

$2mF_o-DF_c$ (at 0.7 rmsd) in gray
 mF_o-DF_c (at 3 rmsd) in purple (negative)
and green (positive)



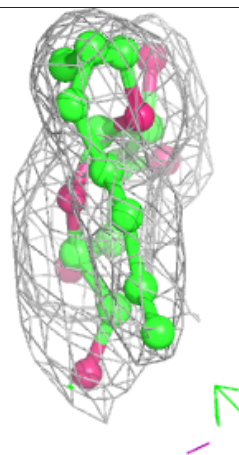
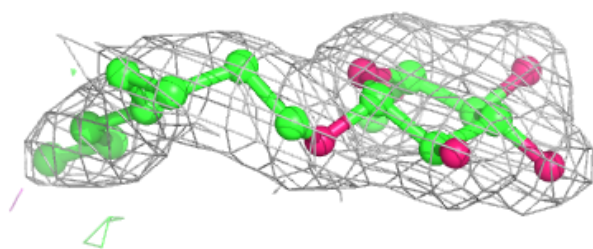
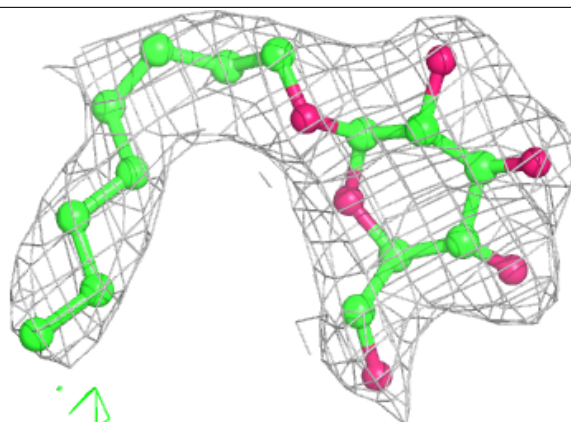
Electron density around LM8 A 706:

$2mF_o-DF_c$ (at 0.7 rmsd) in gray
 mF_o-DF_c (at 3 rmsd) in purple (negative)
and green (positive)



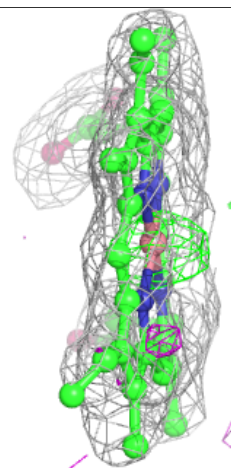
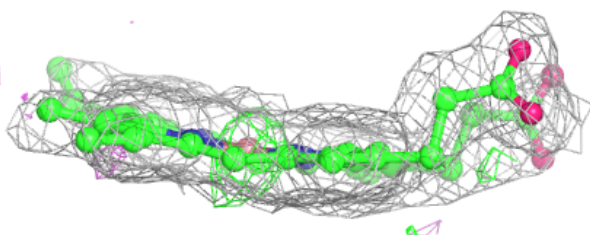
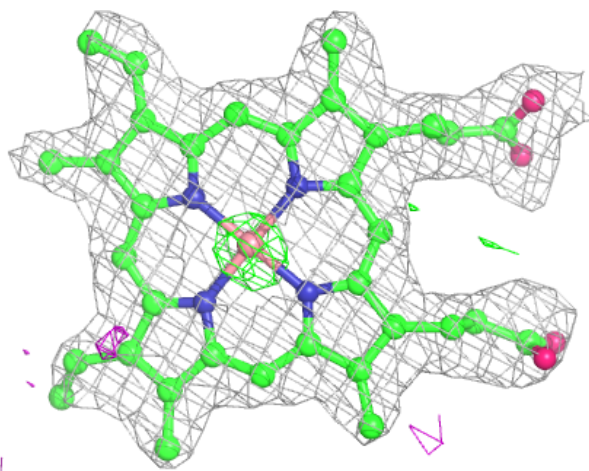
Electron density around BOG B 707:

$2mF_o - DF_c$ (at 0.7 rmsd) in gray
 $mF_o - DF_c$ (at 3 rmsd) in purple (negative)
and green (positive)



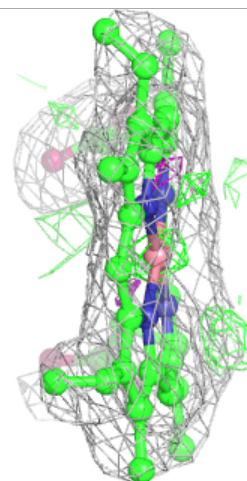
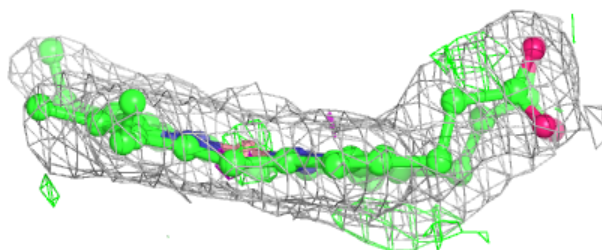
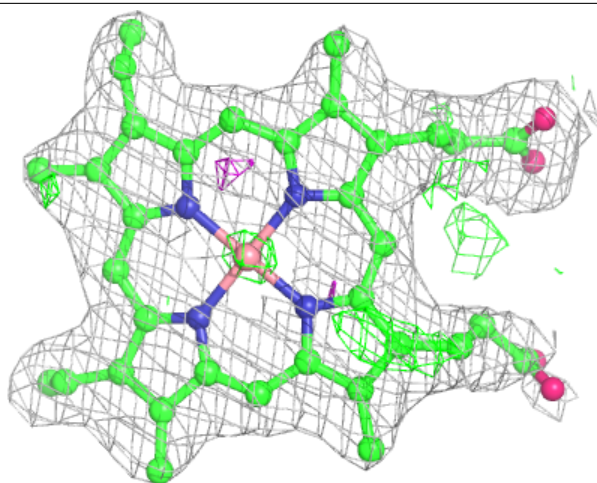
Electron density around COH A 705:

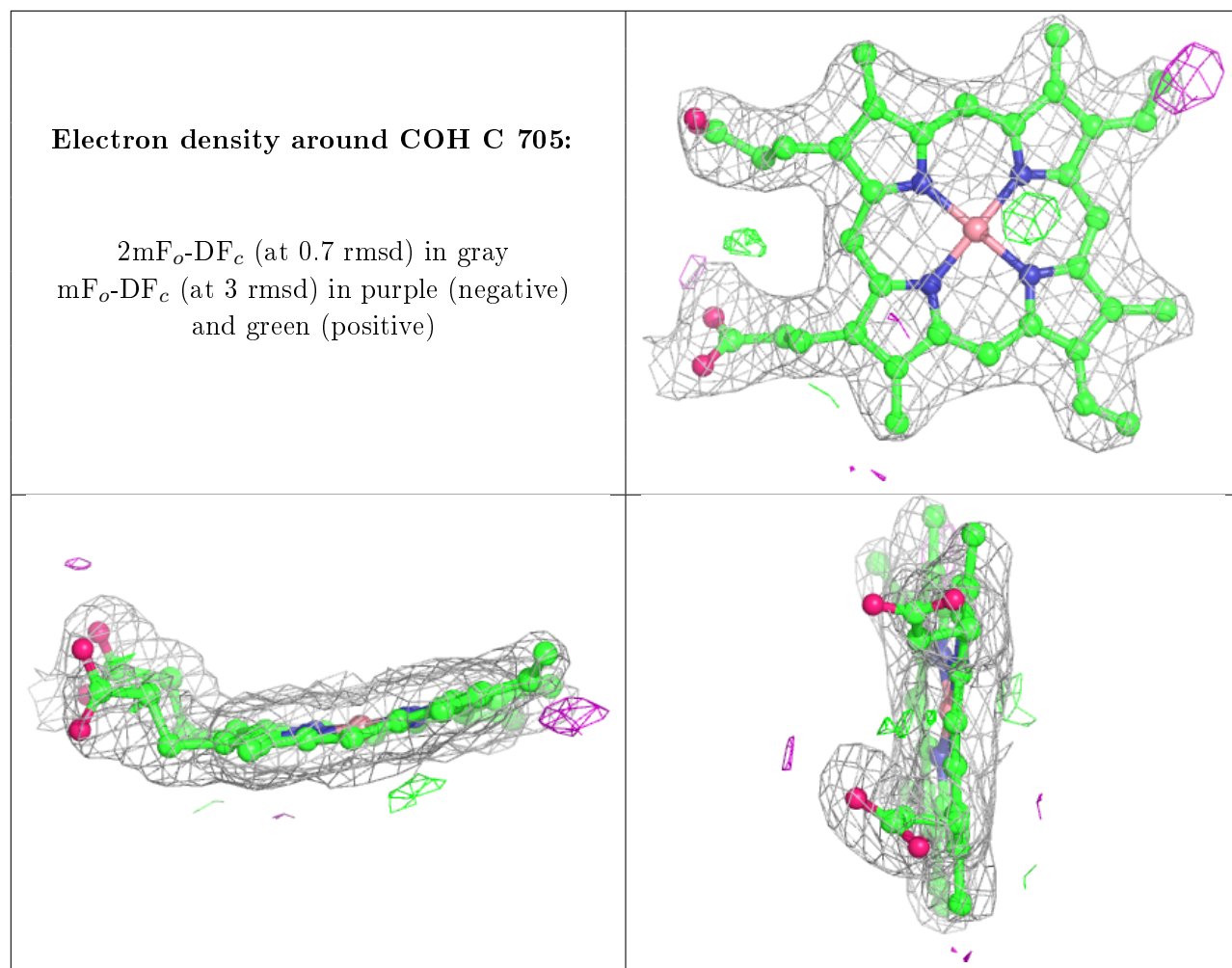
$2mF_o-DF_c$ (at 0.7 rmsd) in gray
 mF_o-DF_c (at 3 rmsd) in purple (negative)
and green (positive)



Electron density around COH B 705:

$2mF_o-DF_c$ (at 0.7 rmsd) in gray
 mF_o-DF_c (at 3 rmsd) in purple (negative)
and green (positive)





6.5 Other polymers ⓘ

There are no such residues in this entry.