



wwPDB X-ray Structure Validation Summary Report ⓘ

Oct 16, 2021 – 06:51 PM EDT

PDB ID : 1RVJ
Title : PHOTOSYNTHETIC REACTION CENTER DOUBLE MUTANT FROM RHODOBACTER SPHAEROIDES WITH ASP L213 REPLACED WITH ASN AND ARG H177 REPLACED WITH HIS
Authors : Xu, Q.; Axelrod, H.L.; Abresch, E.C.; Paddock, M.L.; Okamura, M.Y.; Feher, G.
Deposited on : 2003-12-14
Resolution : 2.75 Å(reported)

This is a wwPDB X-ray Structure Validation Summary Report for a publicly released PDB entry.

We welcome your comments at validation@mail.wwpdb.org

A user guide is available at

<https://www.wwpdb.org/validation/2017/XrayValidationReportHelp>

with specific help available everywhere you see the ⓘ symbol.

The following versions of software and data (see [references ⓘ](#)) were used in the production of this report:

MolProbity	:	4.02b-467
Mogul	:	1.8.5 (274361), CSD as541be (2020)
Xtriage (Phenix)	:	1.13
EDS	:	2.23.2
buster-report	:	1.1.7 (2018)
Percentile statistics	:	20191225.v01 (using entries in the PDB archive December 25th 2019)
Refmac	:	5.8.0158
CCP4	:	7.0.044 (Gargrove)
Ideal geometry (proteins)	:	Engh & Huber (2001)
Ideal geometry (DNA, RNA)	:	Parkinson et al. (1996)
Validation Pipeline (wwPDB-VP)	:	2.23.2

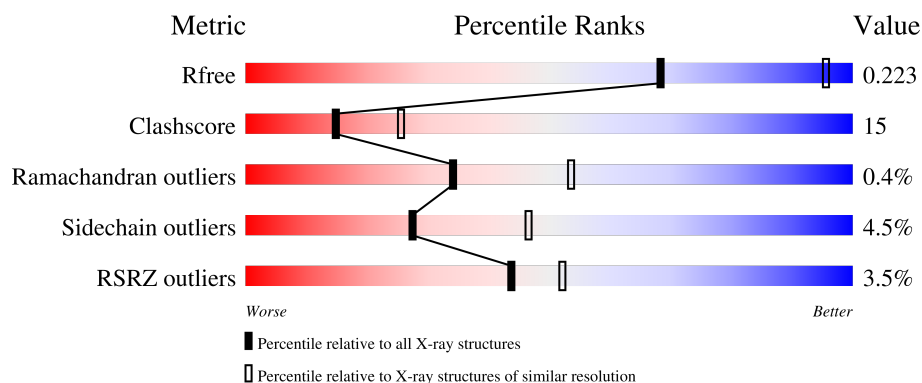
1 Overall quality at a glance

The following experimental techniques were used to determine the structure:

X-RAY DIFFRACTION

The reported resolution of this entry is 2.75 Å.

Percentile scores (ranging between 0-100) for global validation metrics of the entry are shown in the following graphic. The table shows the number of entries on which the scores are based.



Metric	Whole archive (#Entries)	Similar resolution (#Entries, resolution range(Å))
R_{free}	130704	1235 (2.78-2.74)
Clashscore	141614	1277 (2.78-2.74)
Ramachandran outliers	138981	1257 (2.78-2.74)
Sidechain outliers	138945	1257 (2.78-2.74)
RSRZ outliers	127900	1207 (2.78-2.74)

The table below summarises the geometric issues observed across the polymeric chains and their fit to the electron density. The red, orange, yellow and green segments of the lower bar indicate the fraction of residues that contain outliers for ≥ 3 , 2, 1 and 0 types of geometric quality criteria respectively. A grey segment represents the fraction of residues that are not modelled. The numeric value for each fraction is indicated below the corresponding segment, with a dot representing fractions $\leq 5\%$. The upper red bar (where present) indicates the fraction of residues that have poor fit to the electron density. The numeric value is given above the bar.

Mol	Chain	Length	Quality of chain
1	L	281	<div> <div>4%</div> <div> <div></div> <div>74%</div> <div>23%</div> <div>.</div> </div> </div>
2	M	307	<div> <div>4%</div> <div> <div></div> <div>73%</div> <div>22%</div> <div>..</div> </div> </div>
3	H	260	<div> <div>3%</div> <div> <div></div> <div>63%</div> <div>26%</div> <div>. 8%</div> </div> </div>

The following table lists non-polymeric compounds, carbohydrate monomers and non-standard residues in protein, DNA, RNA chains that are outliers for geometric or electron-density-fit criteria:

Mol	Type	Chain	Res	Chirality	Geometry	Clashes	Electron density
10	LDA	M	863	-	-	-	X
5	BPH	L	856	X	-	-	-
5	BPH	M	855	X	-	-	-
6	U10	L	859	-	-	-	X

2 Entry composition

There are 12 unique types of molecules in this entry. The entry contains 7210 atoms, of which 0 are hydrogens and 0 are deuteriums.

In the tables below, the ZeroOcc column contains the number of atoms modelled with zero occupancy, the AltConf column contains the number of residues with at least one atom in alternate conformation and the Trace column contains the number of residues modelled with at most 2 atoms.

- Molecule 1 is a protein called Reaction center protein L chain.

Mol	Chain	Residues	Atoms					ZeroOcc	AltConf	Trace
1	L	281	Total	C	N	O	S	0	0	0
			2232	1507	356	361	8			

There is a discrepancy between the modelled and reference sequences:

Chain	Residue	Modelled	Actual	Comment	Reference
L	213	ASN	ASP	engineered mutation	UNP P02954

- Molecule 2 is a protein called Reaction center protein M chain.

Mol	Chain	Residues	Atoms					ZeroOcc	AltConf	Trace
2	M	301	Total	C	N	O	S	0	0	0
			2404	1605	393	396	10			

There is a discrepancy between the modelled and reference sequences:

Chain	Residue	Modelled	Actual	Comment	Reference
M	307	ALA	-	cloning artifact	UNP P02953

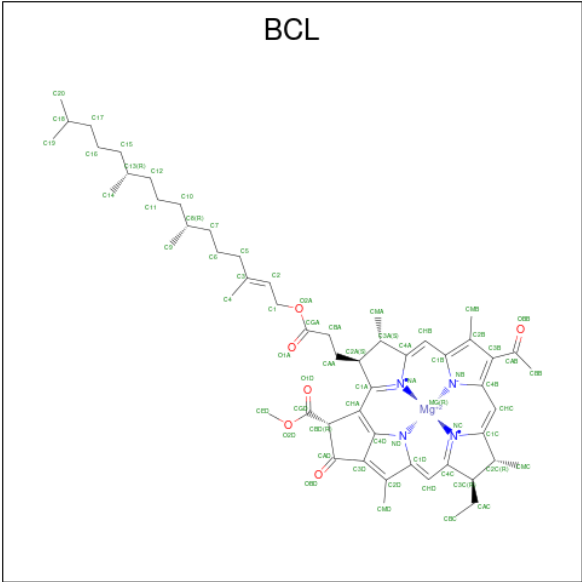
- Molecule 3 is a protein called Reaction center protein H chain.

Mol	Chain	Residues	Atoms					ZeroOcc	AltConf	Trace
3	H	238	Total	C	N	O	S	0	0	0
			1813	1160	310	334	9			

There are 2 discrepancies between the modelled and reference sequences:

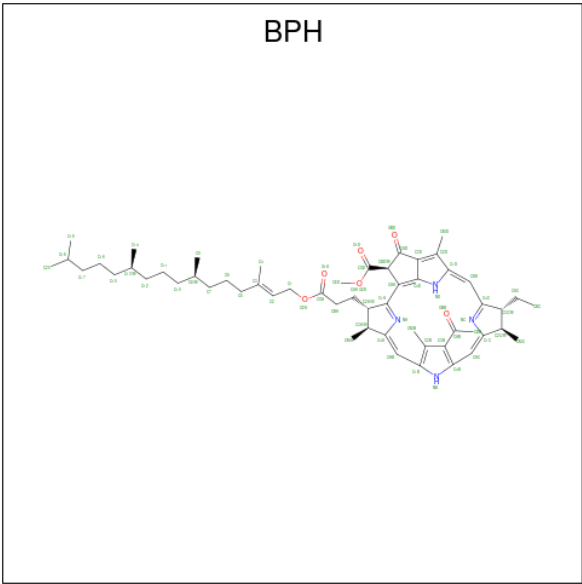
Chain	Residue	Modelled	Actual	Comment	Reference
H	8	GLN	GLY	engineered mutation	UNP P11846
H	177	HIS	ARG	engineered mutation	UNP P11846

- Molecule 4 is BACTERIOCHLOROPHYLL A (three-letter code: BCL) (formula: C₅₅H₇₄MgN₄O₆).



Mol	Chain	Residues	Atoms					ZeroOcc	AltConf
4	L	1	Total	C	Mg	N	O	0	0
			51	40	1	4	6		
4	L	1	Total	C	Mg	N	O	0	0
			66	55	1	4	6		
4	M	1	Total	C	Mg	N	O	0	0
			66	55	1	4	6		
4	M	1	Total	C	Mg	N	O	0	0
			66	55	1	4	6		

- Molecule 5 is BACTERIOPHEOPHYTIN A (three-letter code: BPH) (formula: C₅₅H₇₆N₄O₆).



Mol	Chain	Residues	Atoms				ZeroOcc	AltConf
5	L	1	Total	C	N	O	0	0
			65	55	4	6		
5	M	1	Total	C	N	O	0	0
			65	55	4	6		

- Molecule 6 is UBIQUINONE-10 (three-letter code: U10) (formula: C₅₉H₉₀O₄).



Mol	Chain	Residues	Atoms			ZeroOcc	AltConf
6	L	1	Total	C	O	0	0
			44	40	4		
6	M	1	Total	C	O	0	0
			48	44	4		

- Molecule 7 is FE (II) ION (three-letter code: FE2) (formula: Fe).

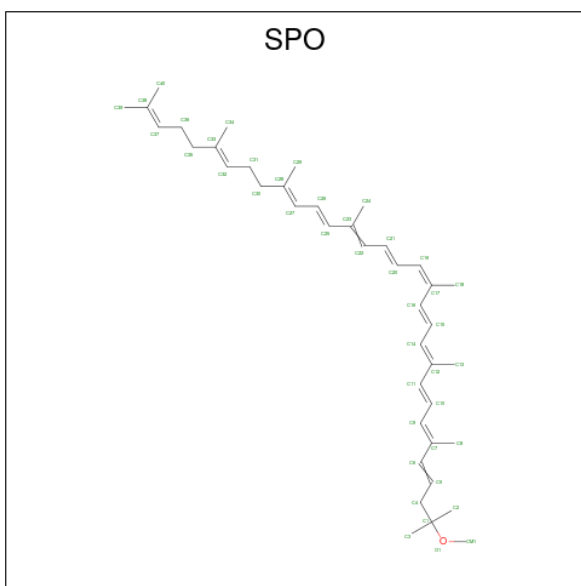
Mol	Chain	Residues	Atoms		ZeroOcc	AltConf
7	M	1	Total	Fe	0	0
			1	1		

- Molecule 8 is PHOSPHATE ION (three-letter code: PO4) (formula: O₄P).



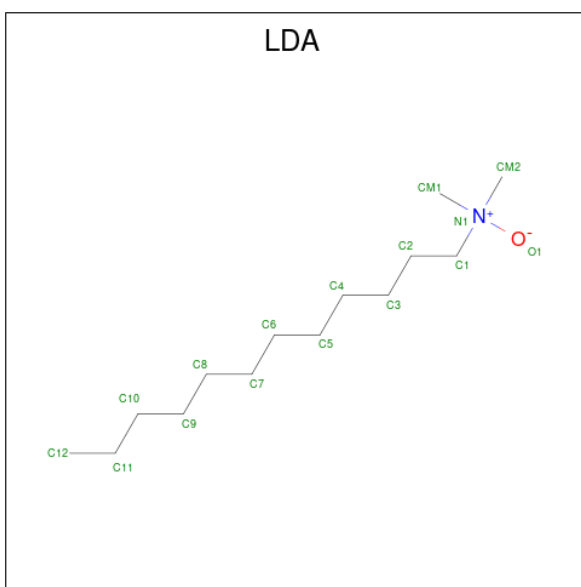
Mol	Chain	Residues	Atoms			ZeroOcc	AltConf
8	M	1	Total	O	P	0	0
			5	4	1		

- Molecule 9 is SPHEROIDENE (three-letter code: SPO) (formula: $C_{41}H_{60}O$).



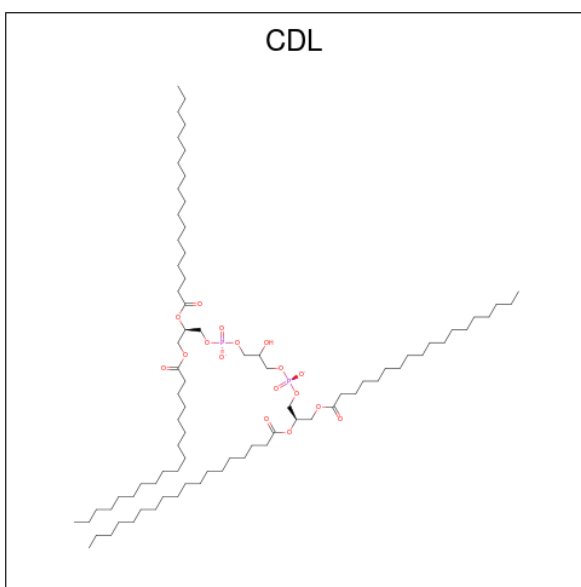
Mol	Chain	Residues	Atoms			ZeroOcc	AltConf
9	M	1	Total	C	O	0	0
			42	41	1		

- Molecule 10 is LAURYL DIMETHYLAMINE-N-OXIDE (three-letter code: LDA) (formula: $C_{14}H_{31}NO$).



Mol	Chain	Residues	Atoms				ZeroOcc	AltConf
10	M	1	Total 16	C 14	N 1	O 1	0	0
10	M	1	Total 16	C 14	N 1	O 1	0	0
10	H	1	Total 16	C 14	N 1	O 1	0	0

- Molecule 11 is CARDIOLIPIN (three-letter code: CDL) (formula: $\text{C}_{81}\text{H}_{156}\text{O}_{17}\text{P}_2$).



Mol	Chain	Residues	Atoms				ZeroOcc	AltConf
11	M	1	Total	C	O	P	0	0
			69	50	17	2		

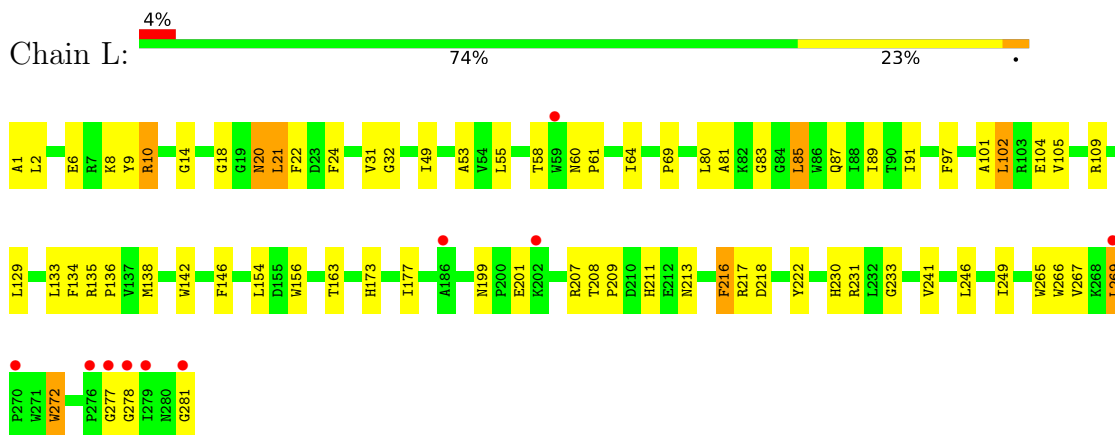
- Molecule 12 is water.

Mol	Chain	Residues	Atoms		ZeroOcc	AltConf
12	L	40	Total 40	O 40	0	0
12	M	43	Total 43	O 43	0	0
12	H	42	Total 42	O 42	0	0

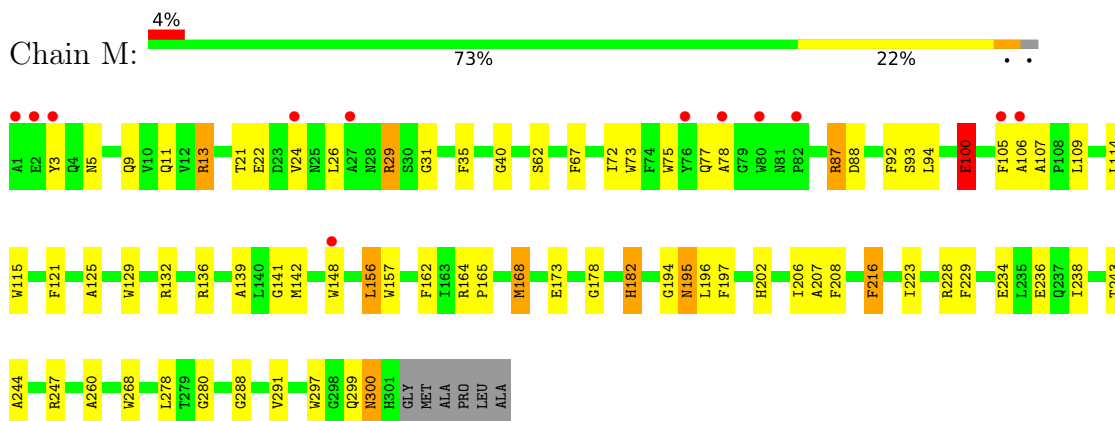
3 Residue-property plots [i](#)

These plots are drawn for all protein, RNA, DNA and oligosaccharide chains in the entry. The first graphic for a chain summarises the proportions of the various outlier classes displayed in the second graphic. The second graphic shows the sequence view annotated by issues in geometry and electron density. Residues are color-coded according to the number of geometric quality criteria for which they contain at least one outlier: green = 0, yellow = 1, orange = 2 and red = 3 or more. A red dot above a residue indicates a poor fit to the electron density ($RSRZ > 2$). Stretches of 2 or more consecutive residues without any outlier are shown as a green connector. Residues present in the sample, but not in the model, are shown in grey.

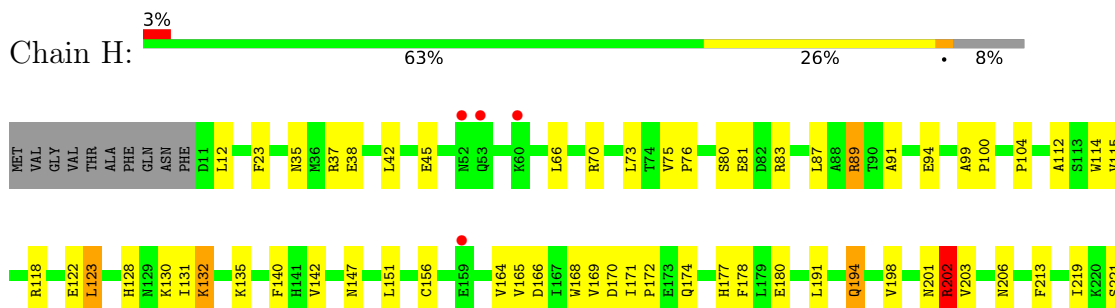
- Molecule 1: Reaction center protein L chain

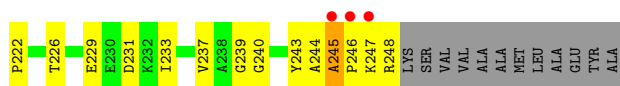


- Molecule 2: Reaction center protein M chain



- Molecule 3: Reaction center protein H chain





4 Data and refinement statistics

Property	Value	Source
Space group	P 31 2 1	Depositor
Cell constants a, b, c, α , β , γ	138.24Å 138.24Å 184.40Å 90.00° 90.00° 120.00°	Depositor
Resolution (Å)	39.00 – 2.75 39.00 – 2.75	Depositor EDS
% Data completeness (in resolution range)	99.4 (39.00-2.75) 99.5 (39.00-2.75)	Depositor EDS
R_{merge}	(Not available)	Depositor
R_{sym}	0.08	Depositor
$\langle I/\sigma(I) \rangle$ ¹	2.90 (at 2.77Å)	Xtriage
Refinement program	CNS	Depositor
R, R_{free}	0.218 , 0.237 0.204 , 0.223	Depositor DCC
R_{free} test set	2685 reflections (5.05%)	wwPDB-VP
Wilson B-factor (Å ²)	60.7	Xtriage
Anisotropy	0.093	Xtriage
Bulk solvent k_{sol} (e/Å ³), B_{sol} (Å ²)	0.33 , 50.4	EDS
L-test for twinning ²	$\langle L \rangle = 0.50$, $\langle L^2 \rangle = 0.34$	Xtriage
Estimated twinning fraction	0.015 for -h,-k,l	Xtriage
F_o, F_c correlation	0.93	EDS
Total number of atoms	7210	wwPDB-VP
Average B, all atoms (Å ²)	57.0	wwPDB-VP

Xtriage's analysis on translational NCS is as follows: *The largest off-origin peak in the Patterson function is 2.82% of the height of the origin peak. No significant pseudotranslation is detected.*

¹Intensities estimated from amplitudes.

²Theoretical values of $\langle |L| \rangle$, $\langle L^2 \rangle$ for acentric reflections are 0.5, 0.333 respectively for untwinned datasets, and 0.375, 0.2 for perfectly twinned datasets.

5 Model quality [i](#)

5.1 Standard geometry [i](#)

Bond lengths and bond angles in the following residue types are not validated in this section: U10, FE2, SPO, PO4, CDL, LDA, BCL, BPH

The Z score for a bond length (or angle) is the number of standard deviations the observed value is removed from the expected value. A bond length (or angle) with $|Z| > 5$ is considered an outlier worth inspection. RMSZ is the root-mean-square of all Z scores of the bond lengths (or angles).

Mol	Chain	Bond lengths		Bond angles	
		RMSZ	# Z >5	RMSZ	# Z >5
1	L	0.40	0/2320	0.59	0/3175
2	M	0.39	0/2496	0.57	0/3408
3	H	0.36	0/1862	0.63	0/2535
All	All	0.39	0/6678	0.60	0/9118

There are no bond length outliers.

There are no bond angle outliers.

There are no chirality outliers.

There are no planarity outliers.

5.2 Too-close contacts [i](#)

In the following table, the Non-H and H(model) columns list the number of non-hydrogen atoms and hydrogen atoms in the chain respectively. The H(added) column lists the number of hydrogen atoms added and optimized by MolProbity. The Clashes column lists the number of clashes within the asymmetric unit, whereas Symm-Clashes lists symmetry-related clashes.

Mol	Chain	Non-H	H(model)	H(added)	Clashes	Symm-Clashes
1	L	2232	0	2189	57	0
2	M	2404	0	2318	95	0
3	H	1813	0	1812	65	0
4	L	117	0	115	12	0
4	M	132	0	147	13	0
5	L	65	0	74	5	0
5	M	65	0	74	13	0
6	L	44	0	57	1	0
6	M	48	0	62	3	0
7	M	1	0	0	0	0

Continued on next page...

Continued from previous page...

Mol	Chain	Non-H	H(model)	H(added)	Clashes	Symm-Clashes
8	M	5	0	0	0	0
9	M	42	0	60	9	0
10	H	16	0	31	1	0
10	M	32	0	62	2	0
11	M	69	0	82	6	0
12	H	42	0	0	0	0
12	L	40	0	0	0	0
12	M	43	0	0	2	0
All	All	7210	0	7083	215	0

The all-atom clashscore is defined as the number of clashes found per 1000 atoms (including hydrogen atoms). The all-atom clashscore for this structure is 15.

The worst 5 of 215 close contacts within the same asymmetric unit are listed below, sorted by their clash magnitude.

Atom-1	Atom-2	Interatomic distance (Å)	Clash overlap (Å)
5:M:855:BPH:H121	5:M:855:BPH:H9C1	1.40	0.99
2:M:300:ASN:N	2:M:300:ASN:HD22	1.64	0.93
1:L:241:VAL:HG21	5:L:856:BPH:HAC1	1.55	0.87
2:M:9:GLN:HE22	3:H:198:VAL:H	1.23	0.86
2:M:21:THR:HG23	2:M:26:LEU:HD11	1.59	0.84

There are no symmetry-related clashes.

5.3 Torsion angles ⓘ

5.3.1 Protein backbone ⓘ

In the following table, the Percentiles column shows the percent Ramachandran outliers of the chain as a percentile score with respect to all X-ray entries followed by that with respect to entries of similar resolution.

The Analysed column shows the number of residues for which the backbone conformation was analysed, and the total number of residues.

Mol	Chain	Analysed	Favoured	Allowed	Outliers	Percentiles	
1	L	279/281 (99%)	266 (95%)	13 (5%)	0	100	100
2	M	299/307 (97%)	285 (95%)	13 (4%)	1 (0%)	41	60
3	H	236/260 (91%)	227 (96%)	7 (3%)	2 (1%)	19	34

Continued on next page...

Continued from previous page...

Mol	Chain	Analysed	Favoured	Allowed	Outliers	Percentiles
All	All	814/848 (96%)	778 (96%)	33 (4%)	3 (0%)	34 53

All (3) Ramachandran outliers are listed below:

Mol	Chain	Res	Type
3	H	245	ALA
2	M	100	GLU
3	H	202	ARG

5.3.2 Protein sidechains [i](#)

In the following table, the Percentiles column shows the percent sidechain outliers of the chain as a percentile score with respect to all X-ray entries followed by that with respect to entries of similar resolution.

The Analysed column shows the number of residues for which the sidechain conformation was analysed, and the total number of residues.

Mol	Chain	Analysed	Rotameric	Outliers	Percentiles
1	L	220/220 (100%)	211 (96%)	9 (4%)	30 50
2	M	236/239 (99%)	226 (96%)	10 (4%)	30 49
3	H	193/209 (92%)	183 (95%)	10 (5%)	23 39
All	All	649/668 (97%)	620 (96%)	29 (4%)	27 46

5 of 29 residues with a non-rotameric sidechain are listed below:

Mol	Chain	Res	Type
2	M	168	MET
3	H	202	ARG
2	M	216	PHE
3	H	132	LYS
2	M	195	ASN

Sometimes sidechains can be flipped to improve hydrogen bonding and reduce clashes. 5 of 11 such sidechains are listed below:

Mol	Chain	Res	Type
2	M	195	ASN
2	M	300	ASN
3	H	194	GLN

Continued on next page...

Continued from previous page...

Mol	Chain	Res	Type
3	H	177	HIS
2	M	5	ASN

5.3.3 RNA ⓘ

There are no RNA molecules in this entry.

5.4 Non-standard residues in protein, DNA, RNA chains ⓘ

There are no non-standard protein/DNA/RNA residues in this entry.

5.5 Carbohydrates ⓘ

There are no monosaccharides in this entry.

5.6 Ligand geometry ⓘ

Of 15 ligands modelled in this entry, 1 is monoatomic - leaving 14 for Mogul analysis.

In the following table, the Counts columns list the number of bonds (or angles) for which Mogul statistics could be retrieved, the number of bonds (or angles) that are observed in the model and the number of bonds (or angles) that are defined in the Chemical Component Dictionary. The Link column lists molecule types, if any, to which the group is linked. The Z score for a bond length (or angle) is the number of standard deviations the observed value is removed from the expected value. A bond length (or angle) with $|Z| > 2$ is considered an outlier worth inspection. RMSZ is the root-mean-square of all Z scores of the bond lengths (or angles).

Mol	Type	Chain	Res	Link	Bond lengths			Bond angles		
					Counts	RMSZ	$\# Z > 2$	Counts	RMSZ	$\# Z > 2$
4	BCL	M	853	-	58,74,74	1.31	7 (12%)	69,115,115	2.74	25 (36%)
11	CDL	M	900	-	68,68,99	1.33	8 (11%)	74,80,111	1.74	15 (20%)
4	BCL	L	851	-	43,59,74	1.54	6 (13%)	51,97,115	2.42	16 (31%)
6	U10	L	859	-	44,44,63	1.65	10 (22%)	53,56,79	1.30	5 (9%)
5	BPH	M	855	-	64,70,70	1.52	8 (12%)	76,101,101	2.27	25 (32%)
5	BPH	L	856	-	64,70,70	1.50	10 (15%)	76,101,101	2.14	18 (23%)
4	BCL	M	854	-	58,74,74	1.28	9 (15%)	69,115,115	2.38	19 (27%)
10	LDA	M	863	-	12,15,15	2.19	1 (8%)	14,17,17	1.65	3 (21%)
9	SPO	M	860	-	40,41,41	3.47	24 (60%)	47,50,50	4.16	14 (29%)

Mol	Type	Chain	Res	Link	Bond lengths			Bond angles		
					Counts	RMSZ	# Z > 2	Counts	RMSZ	# Z > 2
10	LDA	M	861	-	12,15,15	2.13	1 (8%)	14,17,17	1.64	4 (28%)
4	BCL	L	852	-	58,74,74	1.25	4 (6%)	69,115,115	1.97	23 (33%)
8	PO4	M	864	-	4,4,4	1.62	0	6,6,6	0.43	0
6	U10	M	858	-	48,48,63	2.10	16 (33%)	58,61,79	3.24	16 (27%)
10	LDA	H	862	-	12,15,15	2.04	1 (8%)	14,17,17	1.77	4 (28%)

In the following table, the Chirals column lists the number of chiral outliers, the number of chiral centers analysed, the number of these observed in the model and the number defined in the Chemical Component Dictionary. Similar counts are reported in the Torsion and Rings columns. '-' means no outliers of that kind were identified.

Mol	Type	Chain	Res	Link	Chirals	Torsions	Rings
4	BCL	M	853	-	-	12/37/137/137	-
11	CDL	M	900	-	-	23/79/79/110	-
4	BCL	L	851	-	-	1/19/119/137	-
6	U10	L	859	-	-	15/41/65/87	0/1/1/1
5	BPH	M	855	-	2/2/18/22	22/54/105/105	0/5/6/6
5	BPH	L	856	-	2/2/18/22	15/54/105/105	0/5/6/6
4	BCL	M	854	-	-	8/37/137/137	-
10	LDA	M	863	-	-	7/13/13/13	-
9	SPO	M	860	-	-	14/47/47/47	-
10	LDA	M	861	-	-	7/13/13/13	-
4	BCL	L	852	-	-	2/37/137/137	-
6	U10	M	858	-	-	10/45/69/87	0/1/1/1
10	LDA	H	862	-	-	7/13/13/13	-

The worst 5 of 105 bond length outliers are listed below:

Mol	Chain	Res	Type	Atoms	Z	Observed(Å)	Ideal(Å)
9	M	860	SPO	C6-C5	8.89	1.55	1.32
9	M	860	SPO	C10-C11	8.16	1.55	1.34
9	M	860	SPO	C15-C16	7.55	1.54	1.34
10	M	863	LDA	O1-N1	-7.39	1.24	1.42
10	M	861	LDA	O1-N1	-6.94	1.25	1.42

The worst 5 of 187 bond angle outliers are listed below:

Mol	Chain	Res	Type	Atoms	Z	Observed(°)	Ideal(°)
9	M	860	SPO	C2-C1-C4	-20.82	78.90	110.86
6	M	858	U10	C32-C33-C34	18.38	171.91	127.66
4	M	853	BCL	C1-C2-C3	12.78	148.15	126.04
9	M	860	SPO	C3-C1-C4	-11.70	92.89	110.86
4	M	854	BCL	CAC-C3C-C4C	-10.41	89.47	112.58

All (4) chirality outliers are listed below:

Mol	Chain	Res	Type	Atom
5	L	856	BPH	C13
5	L	856	BPH	C8
5	M	855	BPH	C13
5	M	855	BPH	C8

5 of 143 torsion outliers are listed below:

Mol	Chain	Res	Type	Atoms
4	M	853	BCL	C2-C3-C5-C6
4	M	853	BCL	C4-C3-C5-C6
4	M	854	BCL	C1A-C2A-CAA-CBA
4	M	854	BCL	C3A-C2A-CAA-CBA
5	L	856	BPH	C4C-C3C-CAC-CBC

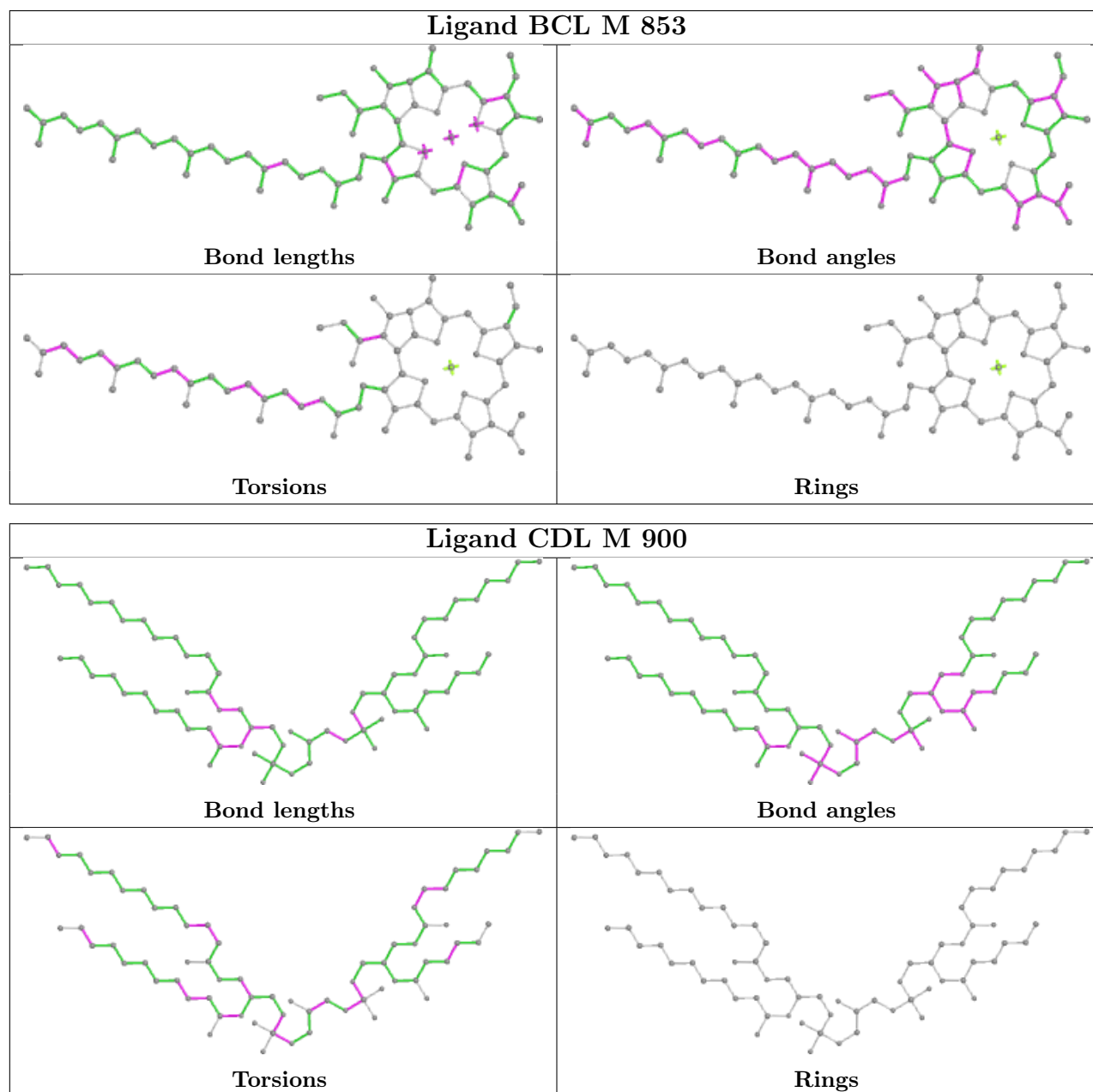
There are no ring outliers.

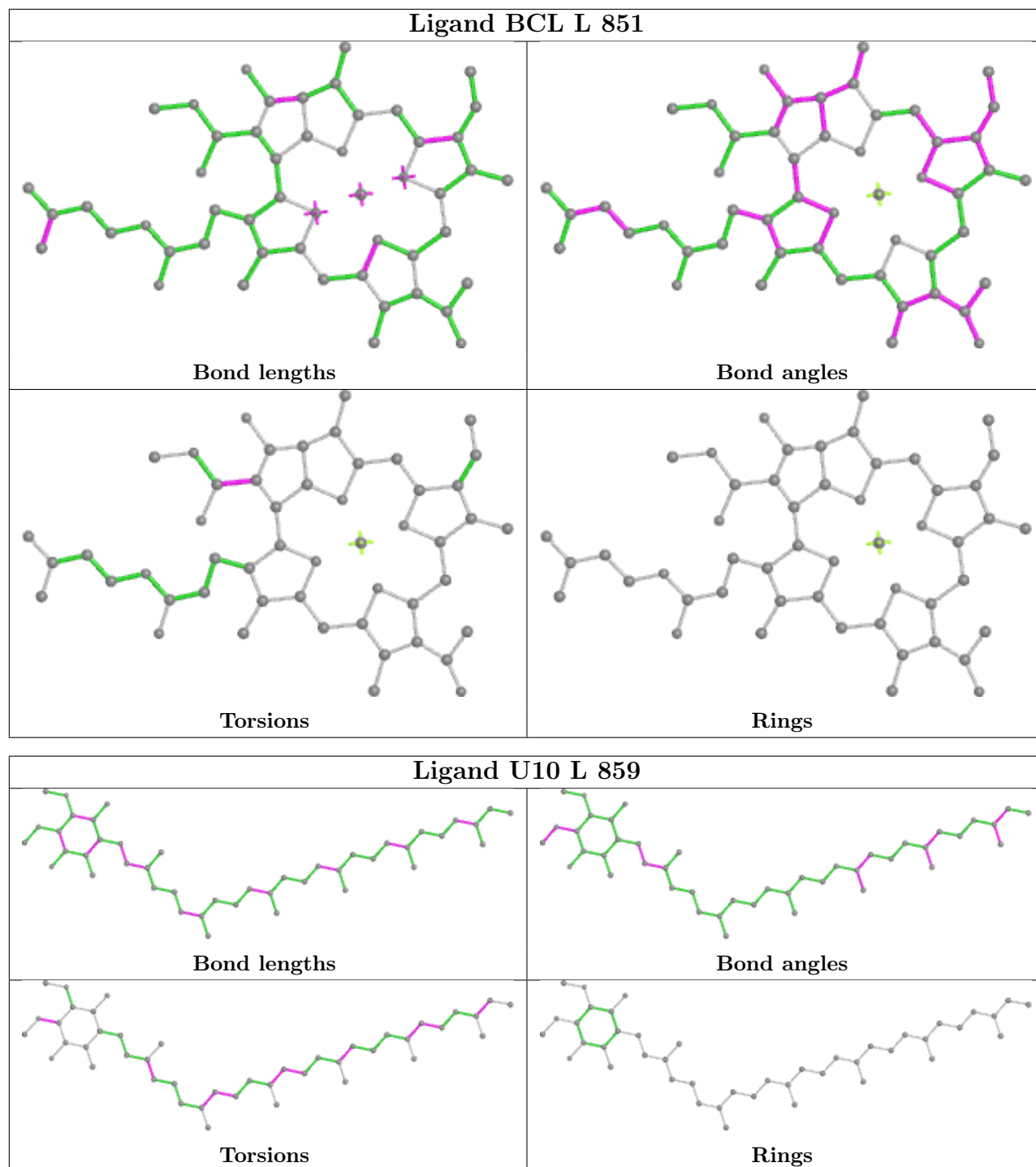
12 monomers are involved in 53 short contacts:

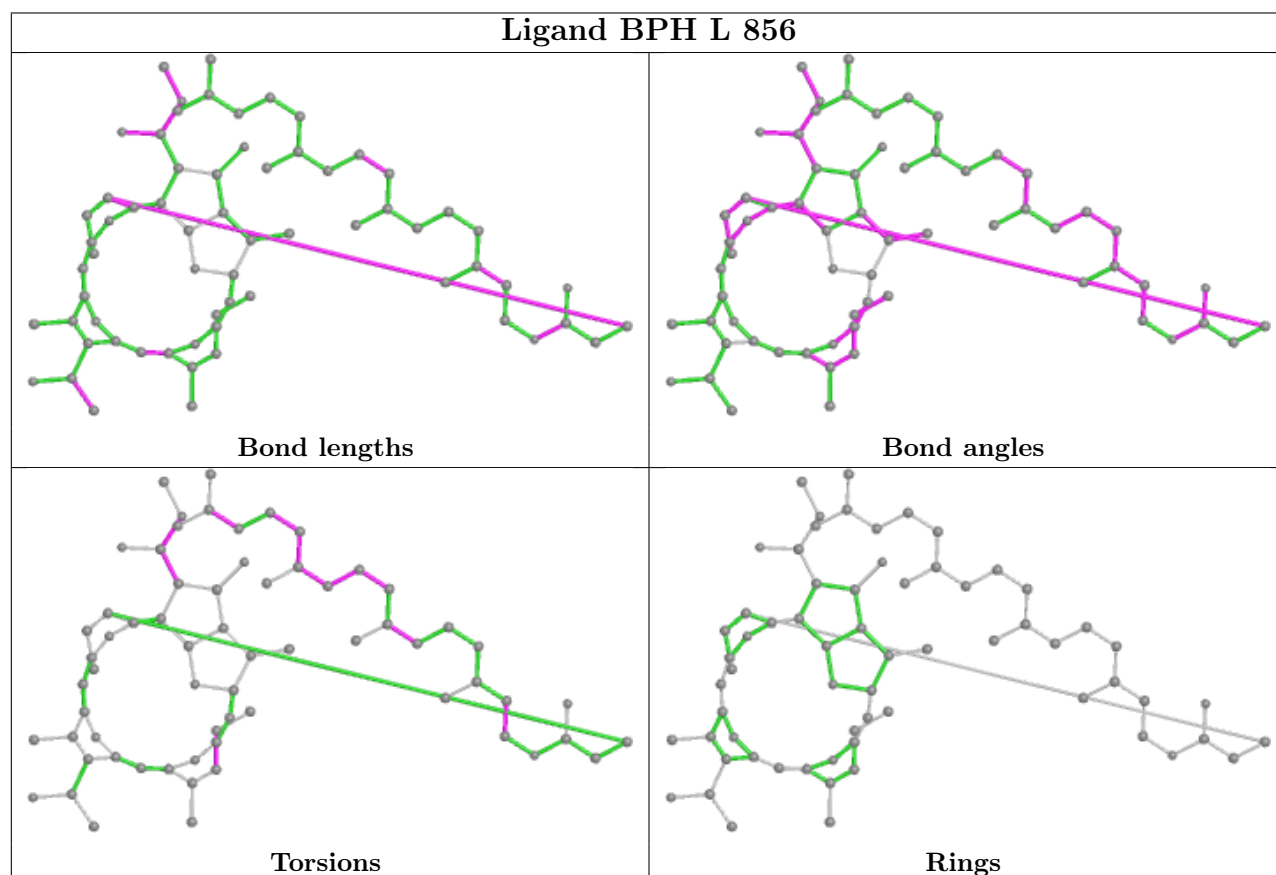
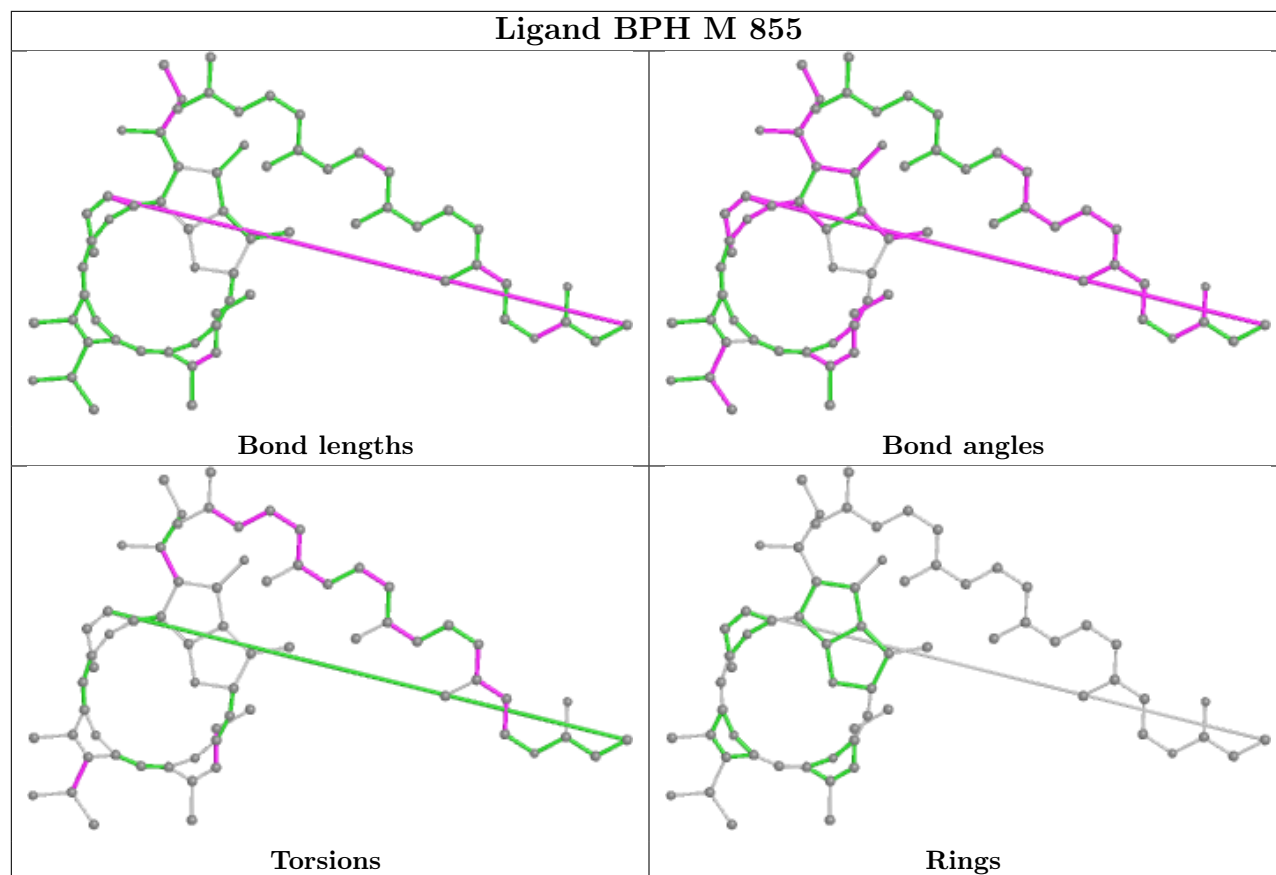
Mol	Chain	Res	Type	Clashes	Symm-Clashes
4	M	853	BCL	6	0
11	M	900	CDL	6	0
4	L	851	BCL	7	0
6	L	859	U10	1	0
5	M	855	BPH	13	0
5	L	856	BPH	5	0
4	M	854	BCL	7	0
9	M	860	SPO	9	0
10	M	861	LDA	2	0
4	L	852	BCL	5	0
6	M	858	U10	3	0
10	H	862	LDA	1	0

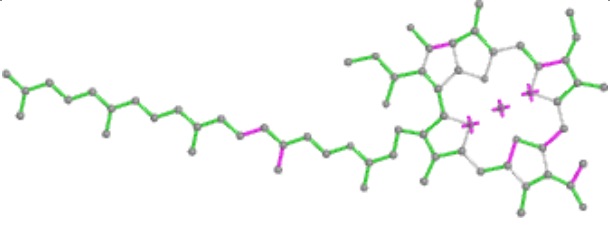
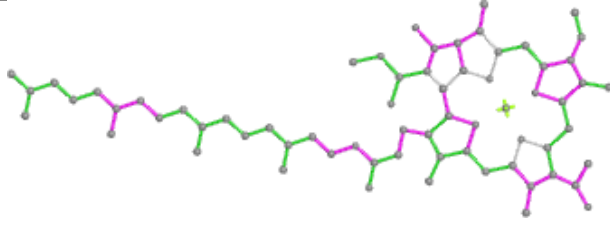
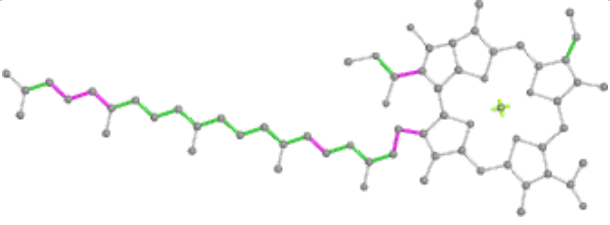
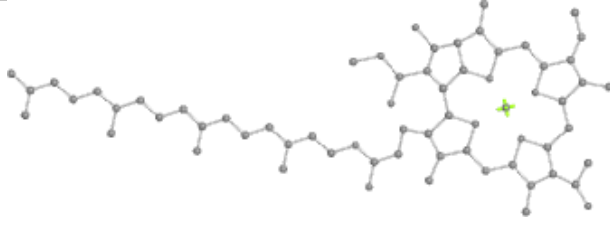
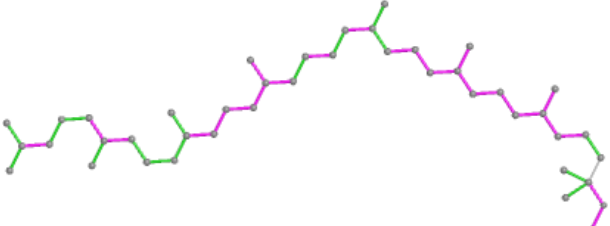
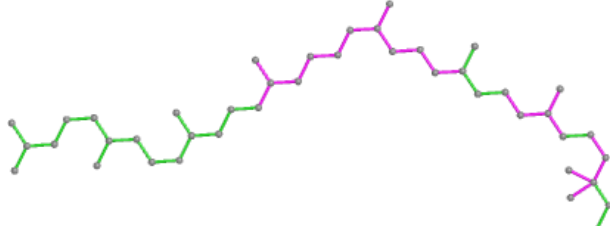
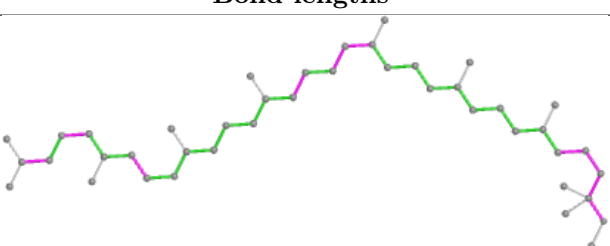
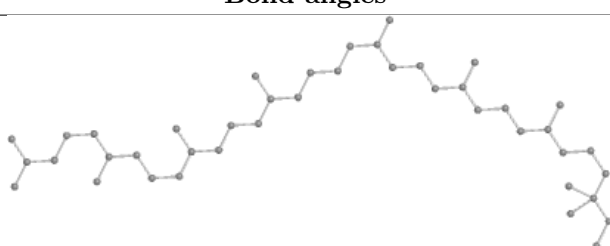
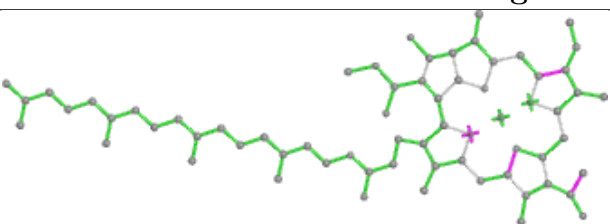
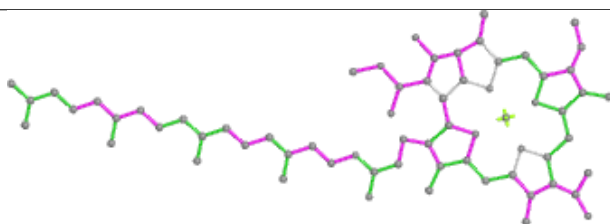
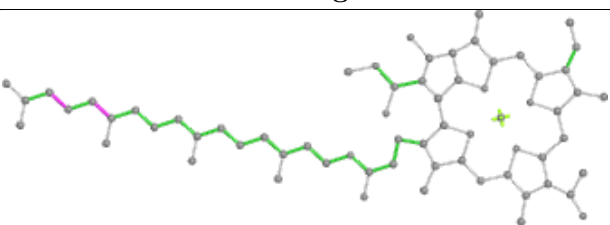
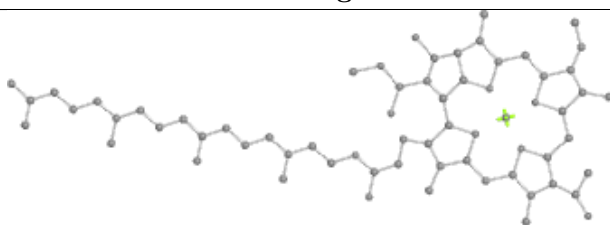
The following is a two-dimensional graphical depiction of Mogul quality analysis of bond lengths, bond angles, torsion angles, and ring geometry for all instances of the Ligand of Interest. In addition, ligands with molecular weight > 250 and outliers as shown on the validation Tables will

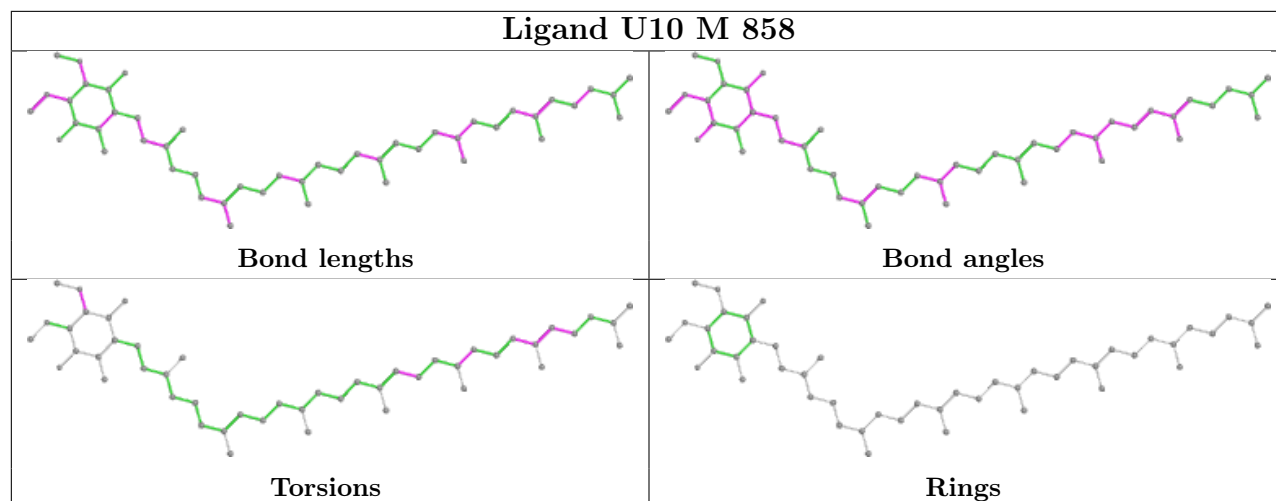
also be included. For torsion angles, if less than 5% of the Mogul distribution of torsion angles is within 10 degrees of the torsion angle in question, then that torsion angle is considered an outlier. Any bond that is central to one or more torsion angles identified as an outlier by Mogul will be highlighted in the graph. For rings, the root-mean-square deviation (RMSD) between the ring in question and similar rings identified by Mogul is calculated over all ring torsion angles. If the average RMSD is greater than 60 degrees and the minimal RMSD between the ring in question and any Mogul-identified rings is also greater than 60 degrees, then that ring is considered an outlier. The outliers are highlighted in purple. The color gray indicates Mogul did not find sufficient equivalents in the CSD to analyse the geometry.







Ligand BCL M 854	
 <p>Bond lengths</p>	 <p>Bond angles</p>
 <p>Torsions</p>	 <p>Rings</p>
Ligand SPO M 860	
 <p>Bond lengths</p>	 <p>Bond angles</p>
 <p>Torsions</p>	 <p>Rings</p>
Ligand BCL L 852	
 <p>Bond lengths</p>	 <p>Bond angles</p>
 <p>Torsions</p>	 <p>Rings</p>



5.7 Other polymers [i](#)

There are no such residues in this entry.

5.8 Polymer linkage issues [i](#)

There are no chain breaks in this entry.

6 Fit of model and data [i](#)

6.1 Protein, DNA and RNA chains [i](#)

In the following table, the column labelled ‘#RSRZ> 2’ contains the number (and percentage) of RSRZ outliers, followed by percent RSRZ outliers for the chain as percentile scores relative to all X-ray entries and entries of similar resolution. The OWAB column contains the minimum, median, 95th percentile and maximum values of the occupancy-weighted average B-factor per residue. The column labelled ‘Q< 0.9’ lists the number of (and percentage) of residues with an average occupancy less than 0.9.

Mol	Chain	Analysed	<RSRZ>	#RSRZ>2	OWAB(Å ²)	Q<0.9
1	L	281/281 (100%)	-0.07	10 (3%) 42 51	40, 52, 77, 92	0
2	M	301/307 (98%)	0.00	12 (3%) 38 45	39, 55, 80, 112	0
3	H	238/260 (91%)	-0.04	7 (2%) 51 61	43, 55, 69, 111	0
All	All	820/848 (96%)	-0.04	29 (3%) 44 52	39, 54, 77, 112	0

The worst 5 of 29 RSRZ outliers are listed below:

Mol	Chain	Res	Type	RSRZ
2	M	1	ALA	6.7
3	H	246	PRO	6.4
1	L	277	GLY	5.0
3	H	245	ALA	4.5
2	M	3	TYR	4.2

6.2 Non-standard residues in protein, DNA, RNA chains [i](#)

There are no non-standard protein/DNA/RNA residues in this entry.

6.3 Carbohydrates [i](#)

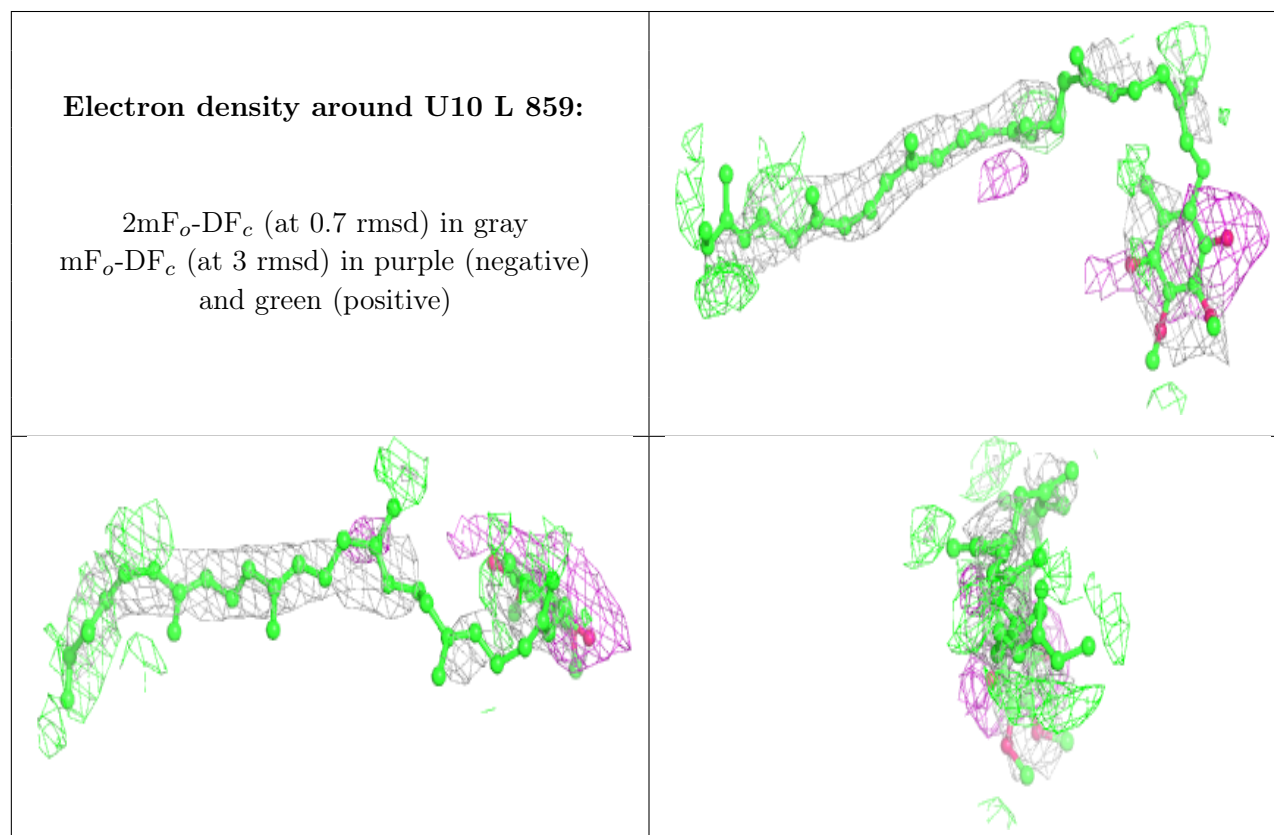
There are no monosaccharides in this entry.

6.4 Ligands [i](#)

In the following table, the Atoms column lists the number of modelled atoms in the group and the number defined in the chemical component dictionary. The B-factors column lists the minimum, median, 95th percentile and maximum values of B factors of atoms in the group. The column labelled ‘Q< 0.9’ lists the number of atoms with occupancy less than 0.9.

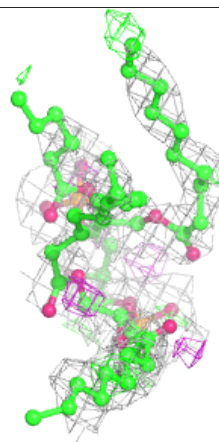
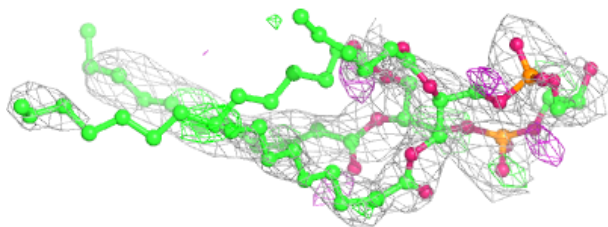
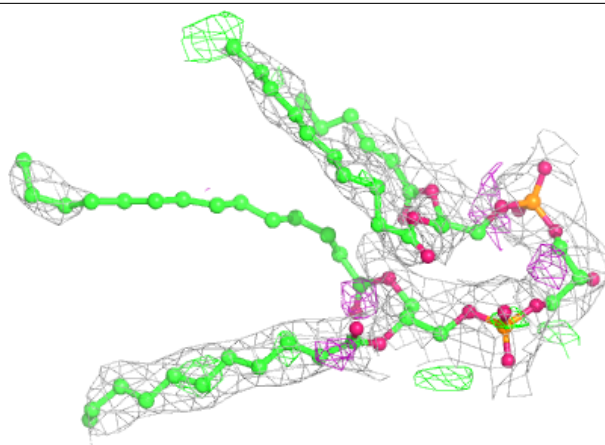
Mol	Type	Chain	Res	Atoms	RSCC	RSR	B-factors(\AA^2)	Q<0.9
6	U10	L	859	44/63	0.66	0.46	92,100,103,107	0
10	LDA	M	863	16/16	0.76	0.42	93,95,103,104	0
11	CDL	M	900	69/100	0.81	0.38	93,106,120,122	0
10	LDA	M	861	16/16	0.85	0.27	60,69,80,81	0
9	SPO	M	860	42/42	0.88	0.34	48,67,86,88	0
5	BPH	M	855	65/65	0.89	0.25	46,51,100,102	0
6	U10	M	858	48/63	0.91	0.27	47,59,84,85	0
10	LDA	H	862	16/16	0.93	0.23	66,68,78,79	0
8	PO4	M	864	5/5	0.93	0.14	91,93,94,94	0
4	BCL	L	852	66/66	0.95	0.18	38,49,52,53	0
4	BCL	M	854	66/66	0.95	0.18	35,40,62,64	0
5	BPH	L	856	65/65	0.95	0.20	37,43,52,54	0
4	BCL	L	851	51/66	0.95	0.23	39,45,68,70	0
4	BCL	M	853	66/66	0.96	0.21	44,50,63,70	0
7	FE2	M	857	1/1	0.99	0.16	45,45,45,45	0

The following is a graphical depiction of the model fit to experimental electron density of all instances of the Ligand of Interest. In addition, ligands with molecular weight > 250 and outliers as shown on the geometry validation Tables will also be included. Each fit is shown from different orientation to approximate a three-dimensional view.

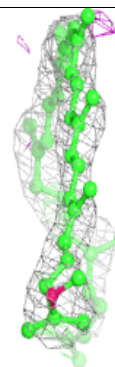
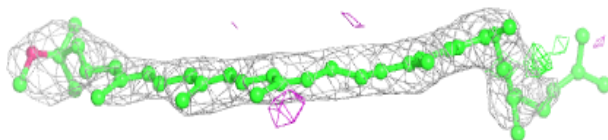
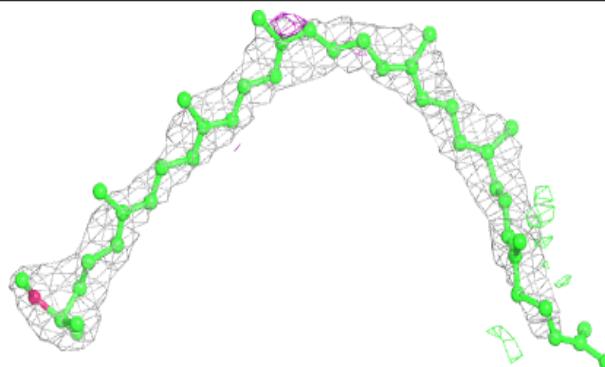


Electron density around CDL M 900:

$2mF_o-DF_c$ (at 0.7 rmsd) in gray
 mF_o-DF_c (at 3 rmsd) in purple (negative)
and green (positive)

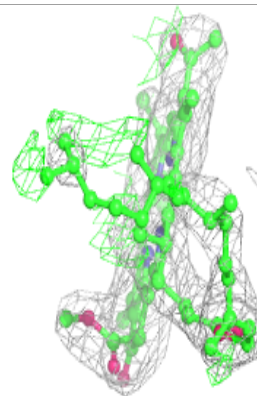
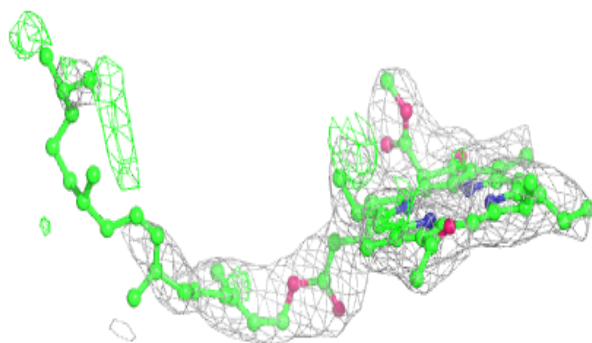
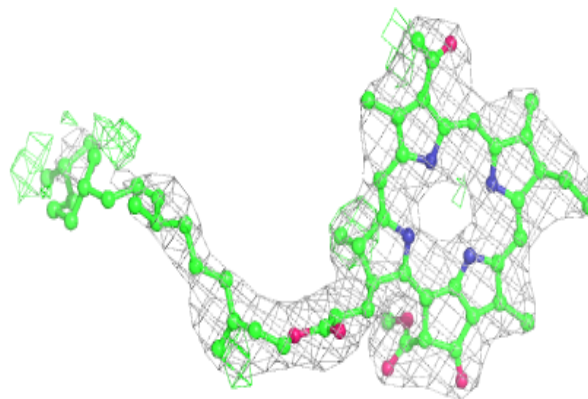
**Electron density around SPO M 860:**

$2mF_o-DF_c$ (at 0.7 rmsd) in gray
 mF_o-DF_c (at 3 rmsd) in purple (negative)
and green (positive)

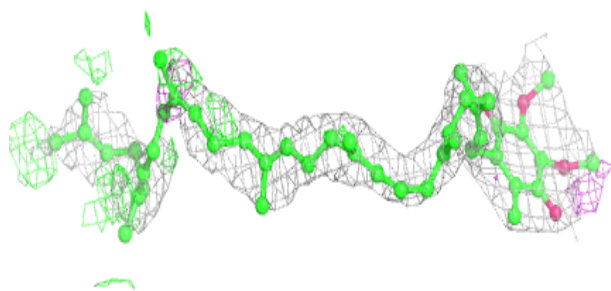
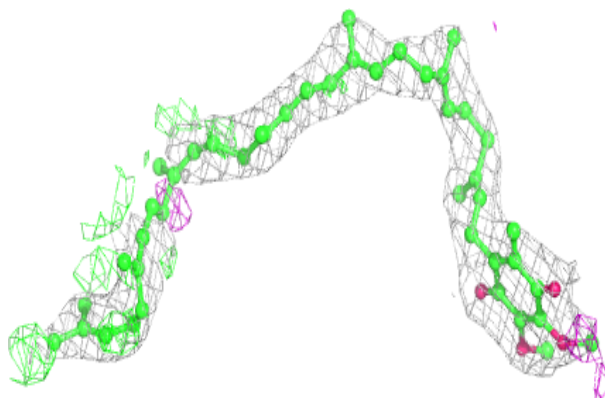


Electron density around BPH M 855:

$2mF_o-DF_c$ (at 0.7 rmsd) in gray
 mF_o-DF_c (at 3 rmsd) in purple (negative)
and green (positive)

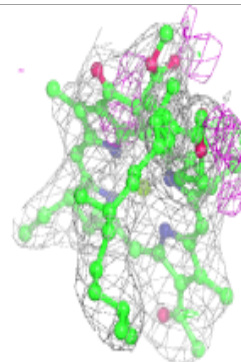
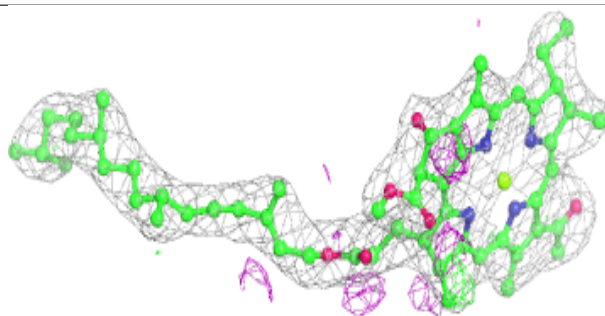
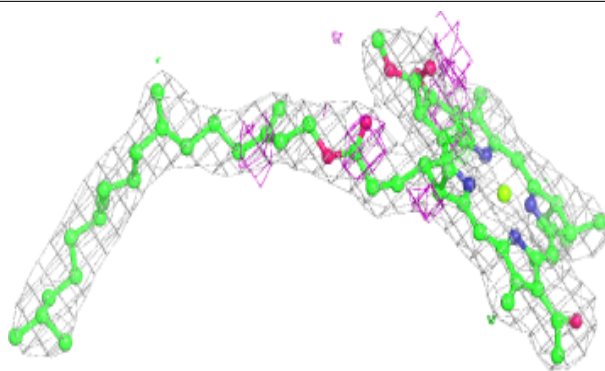
**Electron density around U10 M 858:**

$2mF_o-DF_c$ (at 0.7 rmsd) in gray
 mF_o-DF_c (at 3 rmsd) in purple (negative)
and green (positive)

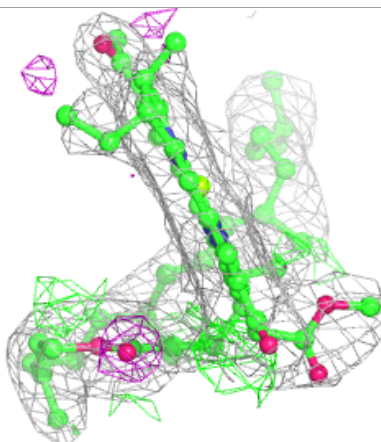
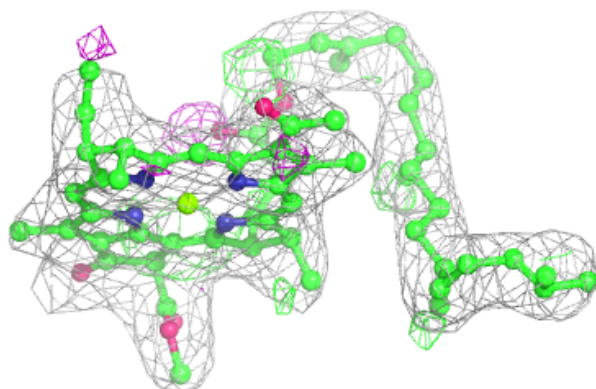
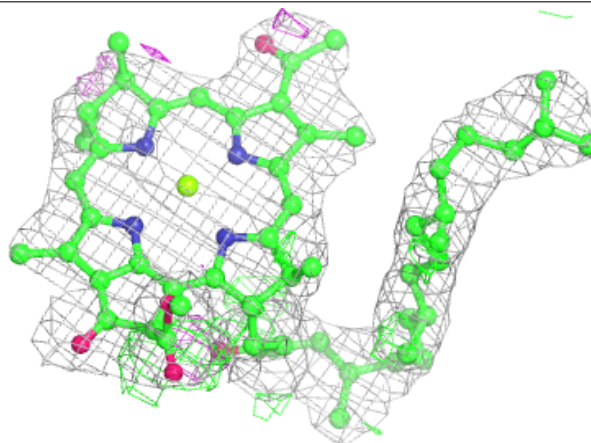


Electron density around BCL L 852:

$2mF_o-DF_c$ (at 0.7 rmsd) in gray
 mF_o-DF_c (at 3 rmsd) in purple (negative)
and green (positive)

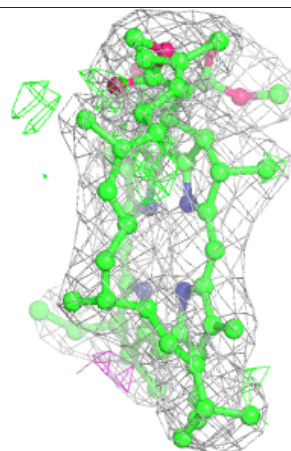
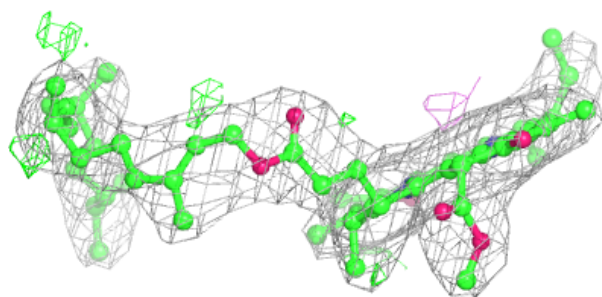
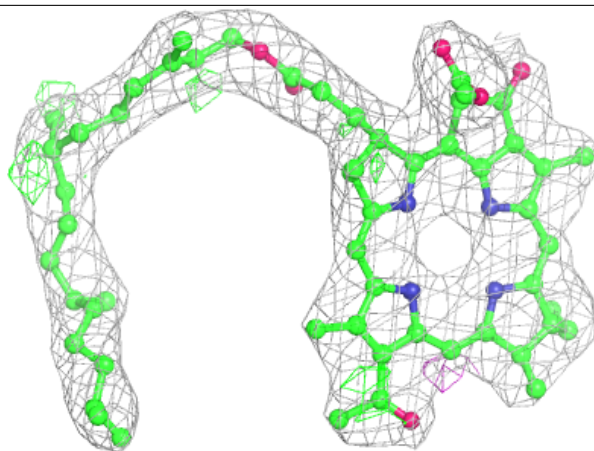
**Electron density around BCL M 854:**

$2mF_o-DF_c$ (at 0.7 rmsd) in gray
 mF_o-DF_c (at 3 rmsd) in purple (negative)
and green (positive)



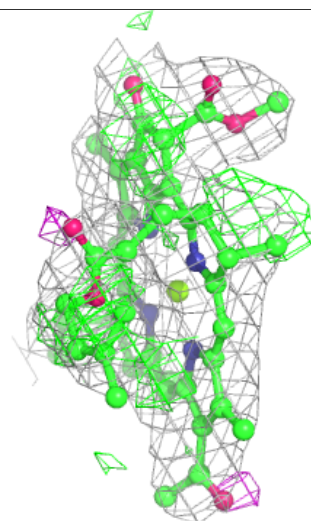
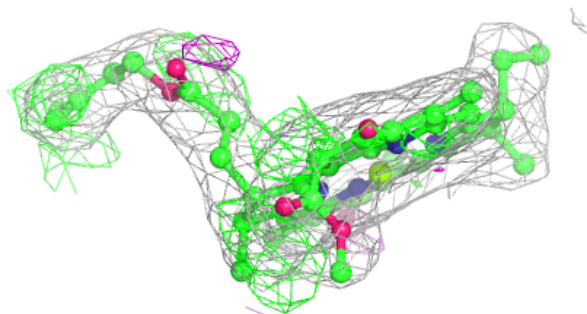
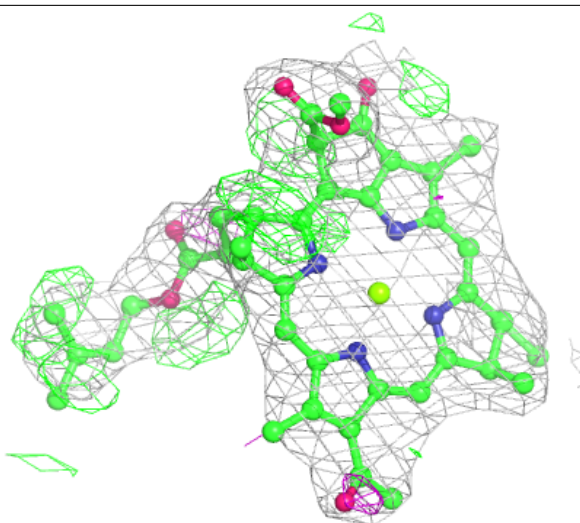
Electron density around BPH L 856:

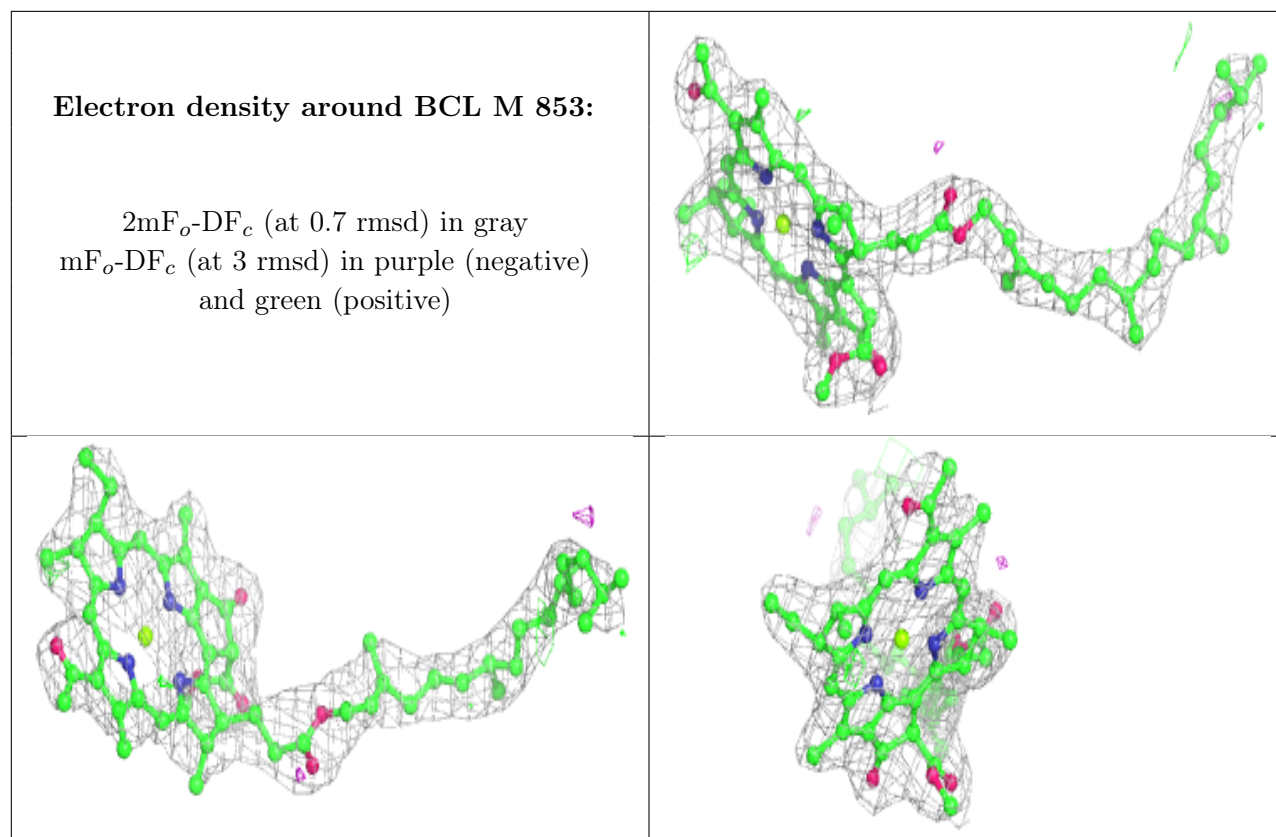
$2mF_o-DF_c$ (at 0.7 rmsd) in gray
 mF_o-DF_c (at 3 rmsd) in purple (negative)
and green (positive)



Electron density around BCL L 851:

$2mF_o-DF_c$ (at 0.7 rmsd) in gray
 mF_o-DF_c (at 3 rmsd) in purple (negative)
and green (positive)





6.5 Other polymers [i](#)

There are no such residues in this entry.