



Full wwPDB X-ray Structure Validation Report ⓘ

Aug 21, 2020 – 01:11 PM BST

PDB ID : 6RYO
Title : Bacterial membrane enzyme structure by the in meso method at 1.9 Å resolution
Authors : Huang, C.Y.; Olatunji, S.; Bailey, J.; Yu, X.; Olieric, V.; Wang, M.; Caffrey, M.
Deposited on : 2019-06-11
Resolution : 1.92 Å(reported)

This is a Full wwPDB X-ray Structure Validation Report for a publicly released PDB entry.

We welcome your comments at validation@mail.wwpdb.org

A user guide is available at

<https://www.wwpdb.org/validation/2017/XrayValidationReportHelp>

with specific help available everywhere you see the ⓘ symbol.

The following versions of software and data (see [references ⓘ](#)) were used in the production of this report:

MolProbity : 4.02b-467
Mogul : 1.8.5 (274361), CSD as541be (2020)
Xtriage (Phenix) : 1.13
EDS : 2.13.1
buster-report : 1.1.7 (2018)
Percentile statistics : 20191225.v01 (using entries in the PDB archive December 25th 2019)
Refmac : 5.8.0158
CCP4 : 7.0.044 (Gargrove)
Ideal geometry (proteins) : Engh & Huber (2001)
Ideal geometry (DNA, RNA) : Parkinson et al. (1996)
Validation Pipeline (wwPDB-VP) : 2.13.1

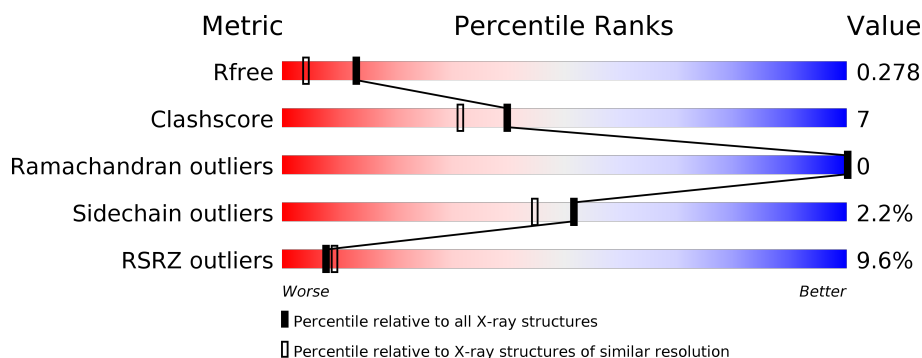
1 Overall quality at a glance

The following experimental techniques were used to determine the structure:

X-RAY DIFFRACTION

The reported resolution of this entry is 1.92 Å.

Percentile scores (ranging between 0-100) for global validation metrics of the entry are shown in the following graphic. The table shows the number of entries on which the scores are based.



Metric	Whole archive (#Entries)	Similar resolution (#Entries, resolution range(Å))
R_{free}	130704	7937 (1.94-1.90)
Clashscore	141614	8644 (1.94-1.90)
Ramachandran outliers	138981	8530 (1.94-1.90)
Sidechain outliers	138945	8530 (1.94-1.90)
RSRZ outliers	127900	7793 (1.94-1.90)

The table below summarises the geometric issues observed across the polymeric chains and their fit to the electron density. The red, orange, yellow and green segments on the lower bar indicate the fraction of residues that contain outliers for ≥ 3 , 2, 1 and 0 types of geometric quality criteria respectively. A grey segment represents the fraction of residues that are not modelled. The numeric value for each fraction is indicated below the corresponding segment, with a dot representing fractions $\leq 5\%$. The upper red bar (where present) indicates the fraction of residues that have poor fit to the electron density. The numeric value is given above the bar.

Mol	Chain	Length	Quality of chain
1	A	187	
2	B	5	

The following table lists non-polymeric compounds, carbohydrate monomers and non-standard residues in protein, DNA, RNA chains that are outliers for geometric or electron-density-fit criteria:

Mol	Type	Chain	Res	Chirality	Geometry	Clashes	Electron density
3	OLC	A	205	-	-	-	X

2 Entry composition

There are 7 unique types of molecules in this entry. The entry contains 1548 atoms, of which 0 are hydrogens and 0 are deuteriums.

In the tables below, the ZeroOcc column contains the number of atoms modelled with zero occupancy, the AltConf column contains the number of residues with at least one atom in alternate conformation and the Trace column contains the number of residues modelled with at most 2 atoms.

- Molecule 1 is a protein called Lipoprotein signal peptidase.

Mol	Chain	Residues	Atoms					ZeroOcc	AltConf	Trace
1	A	155	Total	C	N	O	S	0	0	0
			1232	831	187	210	4			

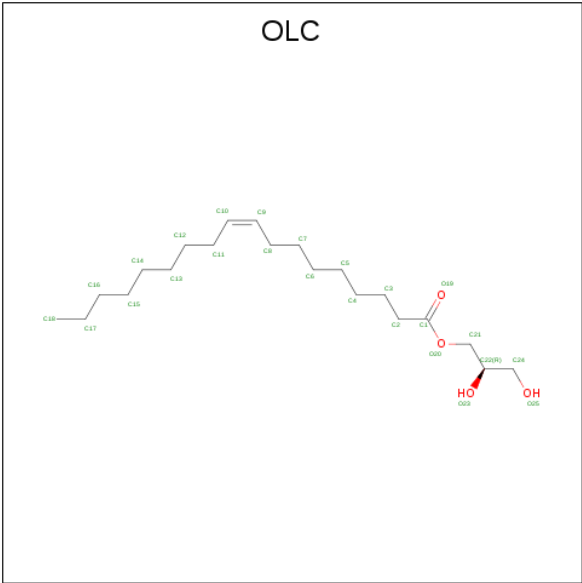
There are 24 discrepancies between the modelled and reference sequences:

Chain	Residue	Modelled	Actual	Comment	Reference
A	-23	MET	-	initiating methionine	UNP Q6GHN9
A	-22	GLY	-	expression tag	UNP Q6GHN9
A	-21	HIS	-	expression tag	UNP Q6GHN9
A	-20	HIS	-	expression tag	UNP Q6GHN9
A	-19	HIS	-	expression tag	UNP Q6GHN9
A	-18	HIS	-	expression tag	UNP Q6GHN9
A	-17	HIS	-	expression tag	UNP Q6GHN9
A	-16	HIS	-	expression tag	UNP Q6GHN9
A	-15	ASP	-	expression tag	UNP Q6GHN9
A	-14	TYR	-	expression tag	UNP Q6GHN9
A	-13	ASP	-	expression tag	UNP Q6GHN9
A	-12	ILE	-	expression tag	UNP Q6GHN9
A	-11	PRO	-	expression tag	UNP Q6GHN9
A	-10	THR	-	expression tag	UNP Q6GHN9
A	-9	THR	-	expression tag	UNP Q6GHN9
A	-8	GLU	-	expression tag	UNP Q6GHN9
A	-7	ASN	-	expression tag	UNP Q6GHN9
A	-6	LEU	-	expression tag	UNP Q6GHN9
A	-5	TYR	-	expression tag	UNP Q6GHN9
A	-4	PHE	-	expression tag	UNP Q6GHN9
A	-3	GLN	-	expression tag	UNP Q6GHN9
A	-2	GLY	-	expression tag	UNP Q6GHN9
A	-1	ALA	-	expression tag	UNP Q6GHN9
A	0	HIS	-	expression tag	UNP Q6GHN9

- Molecule 2 is a protein called Globomycin.

Mol	Chain	Residues	Atoms				ZeroOcc	AltConf	Trace
2	B	5	Total	C	N	O	0	0	0
			46	32	5	9			

- Molecule 3 is (2R)-2,3-dihydroxypropyl (9Z)-octadec-9-enoate (three-letter code: OLC) (formula: C₂₁H₄₀O₄).



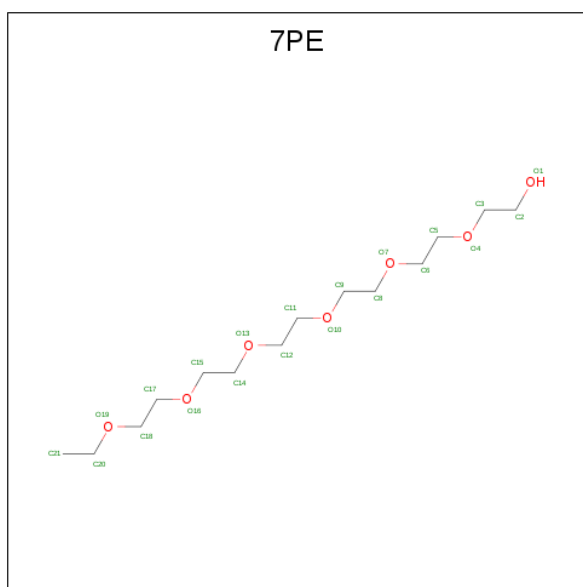
Mol	Chain	Residues	Atoms				ZeroOcc	AltConf
3	A	1	Total	C	O		0	0
			25	21	4			
3	A	1	Total	C	O		0	0
			18	14	4			
3	A	1	Total	C	O		0	0
			19	15	4			
3	A	1	Total	C	O		0	0
			21	17	4			
3	A	1	Total	C	O		0	0
			20	16	4			
3	B	1	Total	C	O		0	0
			21	17	4			

- Molecule 4 is GLYCEROL (three-letter code: GOL) (formula: C₃H₈O₃).



Mol	Chain	Residues	Atoms			ZeroOcc	AltConf
4	A	1	Total	C	O	0	0
			6	3	3		
4	A	1	Total	C	O	0	0
			6	3	3		
4	A	1	Total	C	O	0	0
			6	3	3		
4	A	1	Total	C	O	0	0
			6	3	3		
4	A	1	Total	C	O	0	0
			6	3	3		

- Molecule 5 is 2-(2-(2-(2-(2-ETHOXYETHOXY)ETHOXY)ETHOXY)ETHOXY)ETHOXY)ETHANOL (three-letter code: 7PE) (formula: C₁₄H₃₀O₇).



Mol	Chain	Residues	Atoms			ZeroOcc	AltConf
5	A	1	Total	C	O	0	0
			7	4	3		
5	A	1	Total	C	O	0	0
			7	4	3		
5	A	1	Total	C	O	0	0
			7	4	3		
5	A	1	Total	C	O	0	0
			7	4	3		
5	A	1	Total	C	O	0	0
			13	8	5		
5	A	1	Total	C	O	0	0
			13	8	5		
5	A	1	Total	C	O	0	0
			9	6	3		
5	A	1	Total	C	O	0	0
			12	8	4		
5	A	1	Total	C	O	0	0
			5	3	2		
5	B	1	Total	C	O	0	0
			7	4	3		

- Molecule 6 is ZINC ION (three-letter code: ZN) (formula: Zn).

Mol	Chain	Residues	Atoms		ZeroOcc	AltConf
6	A	1	Total	Zn	0	0
			1	1		

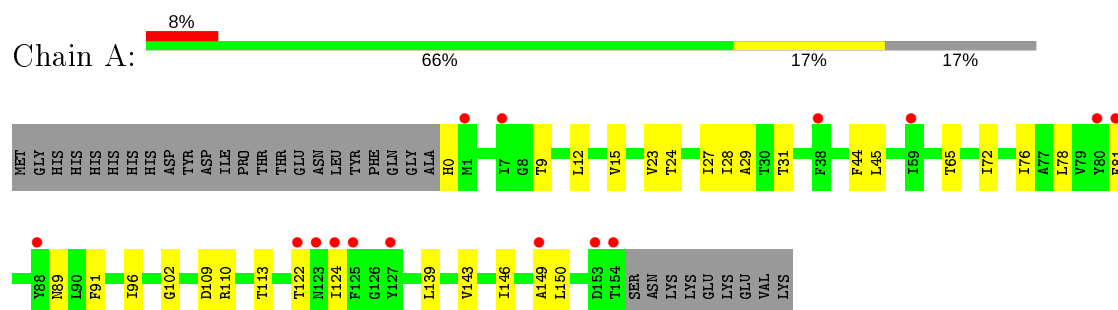
- Molecule 7 is water.

Mol	Chain	Residues	Atoms		ZeroOcc	AltConf
7	A	26	Total 26	O 26	0	0
7	B	2	Total 2	O 2	0	0

3 Residue-property plots [i](#)

These plots are drawn for all protein, RNA, DNA and oligosaccharide chains in the entry. The first graphic for a chain summarises the proportions of the various outlier classes displayed in the second graphic. The second graphic shows the sequence view annotated by issues in geometry and electron density. Residues are color-coded according to the number of geometric quality criteria for which they contain at least one outlier: green = 0, yellow = 1, orange = 2 and red = 3 or more. A red dot above a residue indicates a poor fit to the electron density ($RSRZ > 2$). Stretches of 2 or more consecutive residues without any outlier are shown as a green connector. Residues present in the sample, but not in the model, are shown in grey.

- Molecule 1: Lipoprotein signal peptidase



- Molecule 2: Globomycin



4 Data and refinement statistics

Property	Value	Source
Space group	P 32 2 1	Depositor
Cell constants a, b, c, α , β , γ	52.26 Å 52.26 Å 135.88 Å 90.00° 90.00° 120.00°	Depositor
Resolution (Å)	45.26 – 1.92 45.26 – 1.92	Depositor EDS
% Data completeness (in resolution range)	41.4 (45.26-1.92) 41.4 (45.26-1.92)	Depositor EDS
R_{merge}	(Not available)	Depositor
R_{sym}	(Not available)	Depositor
$\langle I/\sigma(I) \rangle$ ¹	0.97 (at 1.92 Å)	Xtriage
Refinement program	PHENIX (1.13_2998: ???)	Depositor
R, R_{free}	0.250 , 0.276 0.249 , 0.278	Depositor DCC
R_{free} test set	400 reflections (5.67%)	wwPDB-VP
Wilson B-factor (Å ²)	30.7	Xtriage
Anisotropy	0.196	Xtriage
Bulk solvent k_{sol} (e/Å ³), B_{sol} (Å ²)	0.31 , 54.2	EDS
L-test for twinning ²	$\langle L \rangle = 0.52$, $\langle L^2 \rangle = 0.35$	Xtriage
Estimated twinning fraction	0.043 for -h,-k,l	Xtriage
F_o, F_c correlation	0.91	EDS
Total number of atoms	1548	wwPDB-VP
Average B, all atoms (Å ²)	40.0	wwPDB-VP

Xtriage's analysis on translational NCS is as follows: *The largest off-origin peak in the Patterson function is 9.19% of the height of the origin peak. No significant pseudotranslation is detected.*

¹Intensities estimated from amplitudes.

²Theoretical values of $\langle |L| \rangle$, $\langle L^2 \rangle$ for acentric reflections are 0.5, 0.333 respectively for untwinned datasets, and 0.375, 0.2 for perfectly twinned datasets.

5 Model quality

5.1 Standard geometry

Bond lengths and bond angles in the following residue types are not validated in this section: GOL, 5BV, OLC, ALO, MLE, ZN, 7PE, IIL

The Z score for a bond length (or angle) is the number of standard deviations the observed value is removed from the expected value. A bond length (or angle) with $|Z| > 5$ is considered an outlier worth inspection. RMSZ is the root-mean-square of all Z scores of the bond lengths (or angles).

Mol	Chain	Bond lengths		Bond angles	
		RMSZ	# Z >5	RMSZ	# Z >5
1	A	0.25	0/1261	0.42	0/1712
2	B	0.29	0/5	0.68	0/5
All	All	0.25	0/1266	0.42	0/1717

There are no bond length outliers.

There are no bond angle outliers.

There are no chirality outliers.

There are no planarity outliers.

5.2 Too-close contacts

In the following table, the Non-H and H(model) columns list the number of non-hydrogen atoms and hydrogen atoms in the chain respectively. The H(added) column lists the number of hydrogen atoms added and optimized by MolProbity. The Clashes column lists the number of clashes within the asymmetric unit, whereas Symm-Clashes lists symmetry related clashes.

Mol	Chain	Non-H	H(model)	H(added)	Clashes	Symm-Clashes
1	A	1232	0	1277	19	0
2	B	46	0	35	1	0
3	A	103	0	144	5	0
3	B	21	0	29	2	0
4	A	30	0	40	0	0
5	A	80	0	92	4	0
5	B	7	0	8	0	0
6	A	1	0	0	0	0
7	A	26	0	0	0	0
7	B	2	0	0	0	0
All	All	1548	0	1625	23	0

The all-atom clashscore is defined as the number of clashes found per 1000 atoms (including hydrogen atoms). The all-atom clashscore for this structure is 7.

All (23) close contacts within the same asymmetric unit are listed below, sorted by their clash magnitude.

Atom-1	Atom-2	Interatomic distance (Å)	Clash overlap (Å)
1:A:110:ARG:NH2	2:B:2:IIL:O	2.28	0.67
3:A:201:OLC:H24A	3:A:202:OLC:H24A	1.86	0.58
1:A:146:ILE:O	1:A:150:LEU:N	2.34	0.57
1:A:65:THR:HG22	5:A:218:7PE:H122	1.90	0.54
1:A:23:VAL:O	1:A:27:ILE:HG12	2.08	0.53
1:A:113:THR:HG21	5:A:213:7PE:H152	1.90	0.53
1:A:12:LEU:HA	1:A:15:VAL:HB	1.92	0.51
1:A:45:LEU:HG	1:A:122:THR:HG22	1.92	0.51
1:A:89:ASN:HD21	5:A:210:7PE:H111	1.76	0.51
1:A:102:GLY:HA3	1:A:139:LEU:HG	1.92	0.50
1:A:29:ALA:HB1	5:A:213:7PE:H91	1.95	0.48
1:A:28:ILE:HD11	3:A:205:OLC:H4A	1.96	0.46
1:A:78:LEU:HD22	1:A:96:ILE:HG23	1.97	0.46
3:B:101:OLC:H8A	3:B:101:OLC:H11	1.73	0.44
1:A:44:PHE:HB3	1:A:124:ILE:HD11	2.01	0.43
1:A:91:PHE:HE1	1:A:149:ALA:HB2	1.83	0.43
3:A:201:OLC:H17	3:B:101:OLC:H10	2.00	0.43
3:A:203:OLC:H7A	3:A:203:OLC:H4	1.79	0.43
1:A:143:VAL:O	1:A:146:ILE:HG13	2.19	0.43
1:A:27:ILE:O	1:A:31:THR:OG1	2.26	0.42
1:A:72:ILE:O	1:A:76:ILE:HG12	2.20	0.42
1:A:24:THR:O	1:A:28:ILE:HG12	2.20	0.41
1:A:9:THR:HG23	3:A:204:OLC:H21	2.03	0.40

There are no symmetry-related clashes.

5.3 Torsion angles [i](#)

5.3.1 Protein backbone [i](#)

In the following table, the Percentiles column shows the percent Ramachandran outliers of the chain as a percentile score with respect to all X-ray entries followed by that with respect to entries of similar resolution.

The Analysed column shows the number of residues for which the backbone conformation was analysed, and the total number of residues.

Mol	Chain	Analysed	Favoured	Allowed	Outliers	Percentiles	
1	A	153/187 (82%)	149 (97%)	4 (3%)	0	100	100
2	B	1/5 (20%)	1 (100%)	0	0	100	100
All	All	154/192 (80%)	150 (97%)	4 (3%)	0	100	100

There are no Ramachandran outliers to report.

5.3.2 Protein sidechains ⓘ

In the following table, the Percentiles column shows the percent sidechain outliers of the chain as a percentile score with respect to all X-ray entries followed by that with respect to entries of similar resolution.

The Analysed column shows the number of residues for which the sidechain conformation was analysed, and the total number of residues.

Mol	Chain	Analysed	Rotameric	Outliers	Percentiles	
1	A	134/163 (82%)	131 (98%)	3 (2%)	52	45
2	B	1/1 (100%)	1 (100%)	0	100	100
All	All	135/164 (82%)	132 (98%)	3 (2%)	52	45

All (3) residues with a non-rotameric sidechain are listed below:

Mol	Chain	Res	Type
1	A	0	HIS
1	A	81	PHE
1	A	109	ASP

Some sidechains can be flipped to improve hydrogen bonding and reduce clashes. There are no such sidechains identified.

5.3.3 RNA ⓘ

There are no RNA molecules in this entry.

5.4 Non-standard residues in protein, DNA, RNA chains ⓘ

3 non-standard protein/DNA/RNA residues are modelled in this entry.

In the following table, the Counts columns list the number of bonds (or angles) for which Mogul statistics could be retrieved, the number of bonds (or angles) that are observed in the model and

the number of bonds (or angles) that are defined in the Chemical Component Dictionary. The Link column lists molecule types, if any, to which the group is linked. The Z score for a bond length (or angle) is the number of standard deviations the observed value is removed from the expected value. A bond length (or angle) with $|Z| > 2$ is considered an outlier worth inspection. RMSZ is the root-mean-square of all Z scores of the bond lengths (or angles).

Mol	Type	Chain	Res	Link	Bond lengths			Bond angles		
					Counts	RMSZ	$\# Z > 2$	Counts	RMSZ	$\# Z > 2$
2	IIL	B	2	2	6,7,8	0.57	0	5,8,10	1.22	1 (20%)
2	MLE	B	1	2	7,8,9	0.75	0	6,9,11	0.93	0
2	ALO	B	4	2	5,6,7	0.70	0	6,7,9	1.38	1 (16%)

In the following table, the Chirals column lists the number of chiral outliers, the number of chiral centers analysed, the number of these observed in the model and the number defined in the Chemical Component Dictionary. Similar counts are reported in the Torsion and Rings columns. '-' means no outliers of that kind were identified.

Mol	Type	Chain	Res	Link	Chirals	Torsions	Rings
2	IIL	B	2	2	-	2/7/8/10	-
2	MLE	B	1	2	-	3/5/8/10	-
2	ALO	B	4	2	-	1/5/6/8	-

There are no bond length outliers.

All (2) bond angle outliers are listed below:

Mol	Chain	Res	Type	Atoms	Z	Observed(°)	Ideal(°)
2	B	4	ALO	CB-CA-C	-2.70	107.46	111.77
2	B	2	IIL	CB-CA-C	-2.62	108.82	112.83

There are no chirality outliers.

All (6) torsion outliers are listed below:

Mol	Chain	Res	Type	Atoms
2	B	4	ALO	O-C-CA-CB
2	B	1	MLE	CA-CB-CG-CD2
2	B	1	MLE	CA-CB-CG-CD1
2	B	1	MLE	C-CA-CB-CG
2	B	2	IIL	C-CA-CB-CG1
2	B	2	IIL	O-C-CA-CB

There are no ring outliers.

1 monomer is involved in 1 short contact:

Mol	Chain	Res	Type	Clashes	Symm-Clashes
2	B	2	IIL	1	0

5.5 Carbohydrates [i](#)

There are no monosaccharides in this entry.

5.6 Ligand geometry [i](#)

Of 22 ligands modelled in this entry, 1 is monoatomic - leaving 21 for Mogul analysis.

In the following table, the Counts columns list the number of bonds (or angles) for which Mogul statistics could be retrieved, the number of bonds (or angles) that are observed in the model and the number of bonds (or angles) that are defined in the Chemical Component Dictionary. The Link column lists molecule types, if any, to which the group is linked. The Z score for a bond length (or angle) is the number of standard deviations the observed value is removed from the expected value. A bond length (or angle) with $|Z| > 2$ is considered an outlier worth inspection. RMSZ is the root-mean-square of all Z scores of the bond lengths (or angles).

Mol	Type	Chain	Res	Link	Bond lengths			Bond angles		
					Counts	RMSZ	$\# Z > 2$	Counts	RMSZ	$\# Z > 2$
5	7PE	A	215	-	8,8,20	0.55	0	7,7,19	0.24	0
5	7PE	A	209	-	6,6,20	0.49	0	5,5,19	0.29	0
3	OLC	A	205	-	19,19,24	0.90	2 (10%)	20,20,25	0.99	1 (5%)
5	7PE	A	211	-	6,6,20	0.48	0	5,5,19	0.28	0
3	OLC	A	202	-	17,17,24	0.95	2 (11%)	18,18,25	1.08	1 (5%)
4	GOL	A	207	-	5,5,5	0.91	0	5,5,5	1.01	0
4	GOL	A	206	-	5,5,5	0.92	0	5,5,5	1.00	0
5	7PE	A	218	-	4,4,20	0.41	0	3,3,19	0.35	0
4	GOL	A	220	-	5,5,5	0.90	0	5,5,5	1.02	0
3	OLC	B	101	-	20,20,24	0.88	2 (10%)	21,21,25	0.93	1 (4%)
5	7PE	B	102	-	6,6,20	0.49	0	5,5,19	0.25	0
5	7PE	A	214	-	12,12,20	0.53	0	11,11,19	0.24	0
5	7PE	A	213	-	12,12,20	0.52	0	11,11,19	0.23	0
4	GOL	A	219	-	5,5,5	0.92	0	5,5,5	1.02	0
3	OLC	A	203	-	18,18,24	0.93	2 (11%)	18,19,25	1.01	1 (5%)
5	7PE	A	216	-	11,11,20	0.55	0	10,10,19	0.28	0
3	OLC	A	201	-	24,24,24	0.81	2 (8%)	25,25,25	0.98	1 (4%)
3	OLC	A	204	-	20,20,24	0.87	2 (10%)	21,21,25	1.00	1 (4%)
5	7PE	A	212	-	6,6,20	0.48	0	5,5,19	0.24	0
4	GOL	A	208	-	5,5,5	0.97	0	5,5,5	0.90	0
5	7PE	A	210	-	6,6,20	0.49	0	5,5,19	0.29	0

In the following table, the Chirals column lists the number of chiral outliers, the number of chiral centers analysed, the number of these observed in the model and the number defined in the Chemical Component Dictionary. Similar counts are reported in the Torsion and Rings columns. '-' means no outliers of that kind were identified.

Mol	Type	Chain	Res	Link	Chirals	Torsions	Rings
5	7PE	A	215	-	-	3/6/6/18	-
5	7PE	A	209	-	-	1/4/4/18	-
3	OLC	A	205	-	-	5/19/19/24	-
5	7PE	A	211	-	-	1/4/4/18	-
3	OLC	A	202	-	-	5/17/17/24	-
4	GOL	A	207	-	-	0/4/4/4	-
4	GOL	A	206	-	-	2/4/4/4	-
5	7PE	A	218	-	-	0/2/2/18	-
4	GOL	A	220	-	-	0/4/4/4	-
3	OLC	B	101	-	-	7/20/20/24	-
5	7PE	B	102	-	-	2/4/4/18	-
5	7PE	A	214	-	-	7/10/10/18	-
5	7PE	A	213	-	-	7/10/10/18	-
4	GOL	A	219	-	-	2/4/4/4	-
3	OLC	A	203	-	-	4/18/18/24	-
5	7PE	A	216	-	-	6/9/9/18	-
3	OLC	A	201	-	-	12/24/24/24	-
3	OLC	A	204	-	-	14/20/20/24	-
5	7PE	A	212	-	-	3/4/4/18	-
4	GOL	A	208	-	-	2/4/4/4	-
5	7PE	A	210	-	-	1/4/4/18	-

All (12) bond length outliers are listed below:

Mol	Chain	Res	Type	Atoms	Z	Observed(Å)	Ideal(Å)
3	A	203	OLC	O20-C1	2.50	1.40	1.33
3	A	205	OLC	O20-C1	2.48	1.40	1.33
3	A	204	OLC	O20-C1	2.44	1.40	1.33
3	A	201	OLC	O20-C1	2.41	1.40	1.33
3	A	202	OLC	O20-C1	2.37	1.40	1.33
3	B	101	OLC	O20-C1	2.35	1.40	1.33
3	B	101	OLC	O20-C21	-2.21	1.40	1.45
3	A	201	OLC	O20-C21	-2.18	1.40	1.45
3	A	202	OLC	O20-C21	-2.16	1.40	1.45
3	A	203	OLC	O20-C21	-2.09	1.40	1.45

Continued on next page...

Continued from previous page...

Mol	Chain	Res	Type	Atoms	Z	Observed(Å)	Ideal(Å)
3	A	204	OLC	O20-C21	-2.08	1.40	1.45
3	A	205	OLC	O20-C21	-2.03	1.40	1.45

All (6) bond angle outliers are listed below:

Mol	Chain	Res	Type	Atoms	Z	Observed(°)	Ideal(°)
3	A	204	OLC	O20-C1-C2	2.78	120.63	111.91
3	A	205	OLC	O20-C1-C2	2.75	120.52	111.91
3	A	201	OLC	O20-C1-C2	2.62	120.14	111.91
3	A	202	OLC	O20-C1-C2	2.58	119.99	111.91
3	A	203	OLC	O20-C1-C2	2.49	119.73	111.91
3	B	101	OLC	O20-C1-C2	2.38	119.36	111.91

There are no chirality outliers.

All (84) torsion outliers are listed below:

Mol	Chain	Res	Type	Atoms
3	B	101	OLC	C21-C22-C24-O25
4	A	208	GOL	O1-C1-C2-C3
3	A	204	OLC	C6-C7-C8-C9
3	A	204	OLC	C21-C22-C24-O25
3	A	201	OLC	O19-C1-O20-C21
3	A	201	OLC	C2-C1-O20-C21
5	A	214	7PE	C8-C9-O10-C11
5	A	213	7PE	O7-C8-C9-O10
3	A	202	OLC	C2-C1-O20-C21
3	A	202	OLC	O19-C1-O20-C21
3	A	201	OLC	O20-C21-C22-C24
3	A	202	OLC	C1-C2-C3-C4
5	A	214	7PE	O10-C11-C12-O13
5	A	216	7PE	O13-C14-C15-O16
5	A	212	7PE	O13-C14-C15-O16
5	A	215	7PE	O4-C5-C6-O7
3	A	201	OLC	O20-C21-C22-O23
3	A	204	OLC	C2-C1-O20-C21
5	A	214	7PE	O16-C17-C18-O19
3	A	201	OLC	C3-C4-C5-C6
4	A	206	GOL	C1-C2-C3-O3
3	A	204	OLC	O20-C21-C22-O23
3	A	204	OLC	O19-C1-O20-C21
3	B	101	OLC	O23-C22-C24-O25
4	A	208	GOL	O1-C1-C2-O2

Continued on next page...

Continued from previous page...

Mol	Chain	Res	Type	Atoms
3	A	204	OLC	O23-C22-C24-O25
3	B	101	OLC	C10-C11-C12-C13
3	A	201	OLC	C11-C12-C13-C14
3	A	201	OLC	C2-C3-C4-C5
3	A	201	OLC	C5-C6-C7-C8
3	A	202	OLC	C3-C4-C5-C6
3	A	201	OLC	C4-C5-C6-C7
5	A	210	7PE	O13-C14-C15-O16
3	A	204	OLC	O20-C21-C22-C24
5	A	215	7PE	O7-C8-C9-O10
5	A	213	7PE	O13-C14-C15-O16
5	A	216	7PE	C5-C6-O7-C8
5	A	213	7PE	C9-C8-O7-C6
5	A	209	7PE	C15-C14-O13-C12
5	A	213	7PE	O4-C5-C6-O7
3	A	203	OLC	C1-C2-C3-C4
3	A	203	OLC	C9-C10-C11-C12
5	A	216	7PE	C8-C9-O10-C11
5	A	216	7PE	C9-C8-O7-C6
5	A	212	7PE	C11-C12-O13-C14
5	A	214	7PE	C14-C15-O16-C17
5	B	102	7PE	C15-C14-O13-C12
4	A	219	GOL	O1-C1-C2-O2
4	A	206	GOL	O2-C2-C3-O3
5	A	214	7PE	C15-C14-O13-C12
3	B	101	OLC	C6-C7-C8-C9
5	A	211	7PE	O10-C11-C12-O13
3	A	204	OLC	C3-C4-C5-C6
5	A	216	7PE	C11-C12-O13-C14
3	B	101	OLC	C11-C12-C13-C14
5	A	213	7PE	C5-C6-O7-C8
5	A	213	7PE	C12-C11-O10-C9
5	B	102	7PE	C11-C12-O13-C14
3	A	204	OLC	C11-C12-C13-C14
3	A	205	OLC	C10-C11-C12-C13
3	B	101	OLC	C2-C3-C4-C5
3	A	204	OLC	C4-C5-C6-C7
5	A	214	7PE	C11-C12-O13-C14
3	A	203	OLC	C5-C6-C7-C8
3	A	201	OLC	C13-C14-C15-C16
5	A	212	7PE	O10-C11-C12-O13
3	A	203	OLC	C7-C8-C9-C10

Continued on next page...

Continued from previous page...

Mol	Chain	Res	Type	Atoms
3	A	205	OLC	C7-C8-C9-C10
3	A	204	OLC	C9-C10-C11-C12
3	A	204	OLC	C7-C8-C9-C10
3	A	205	OLC	O19-C1-O20-C21
3	A	201	OLC	C9-C10-C11-C12
3	A	201	OLC	C7-C8-C9-C10
3	A	205	OLC	C2-C1-O20-C21
3	A	202	OLC	C7-C8-C9-C10
3	A	204	OLC	O20-C1-C2-C3
3	B	101	OLC	O20-C21-C22-C24
5	A	215	7PE	C9-C8-O7-C6
3	A	205	OLC	C3-C4-C5-C6
4	A	219	GOL	O1-C1-C2-C3
3	A	204	OLC	O19-C1-C2-C3
5	A	213	7PE	C15-C14-O13-C12
5	A	214	7PE	O13-C14-C15-O16
5	A	216	7PE	O10-C11-C12-O13

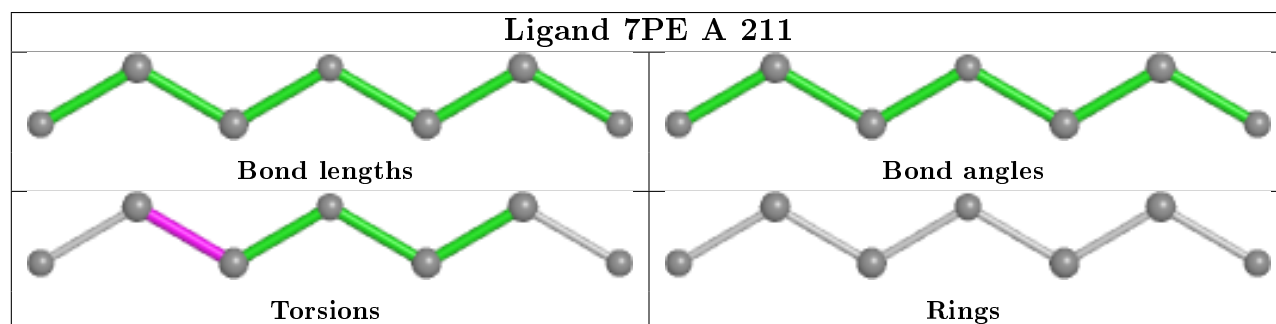
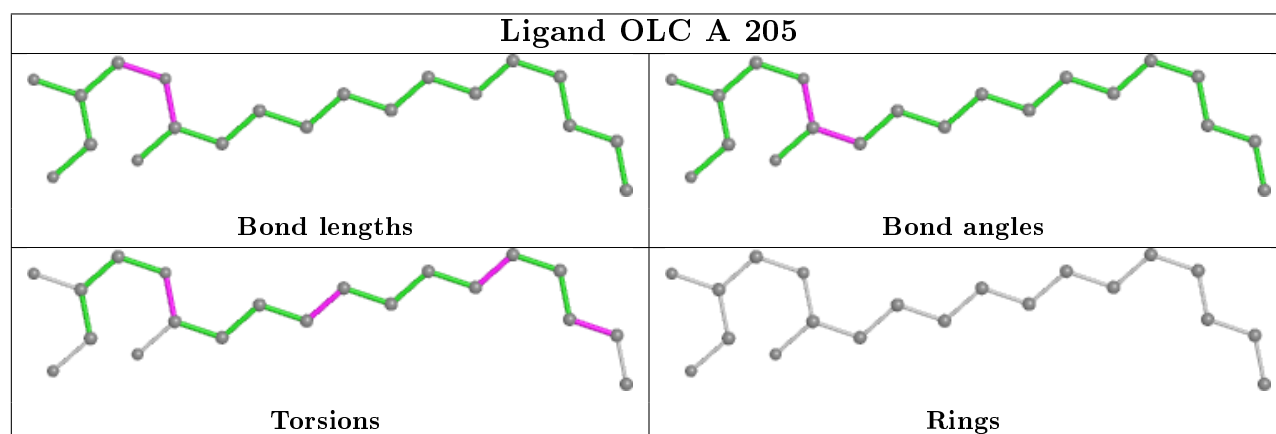
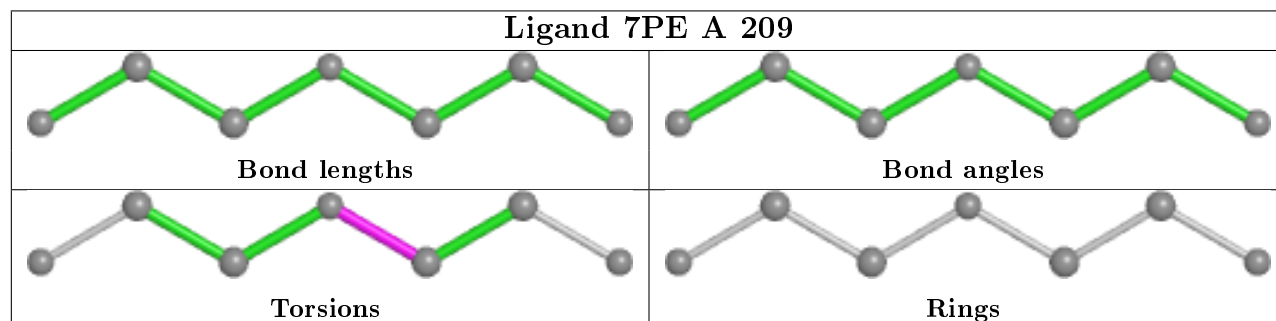
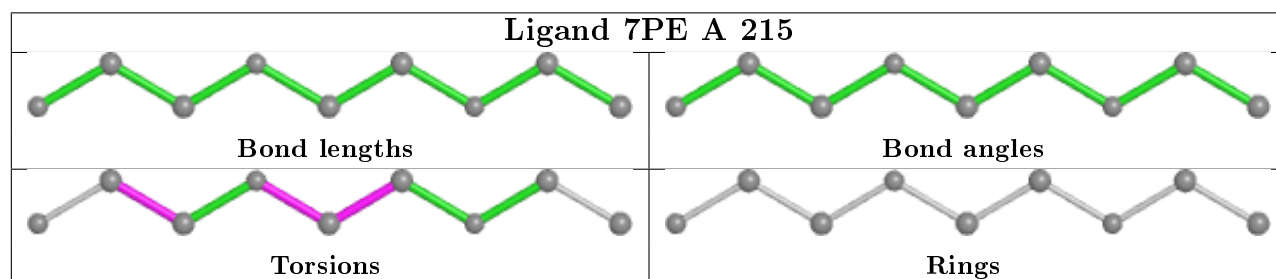
There are no ring outliers.

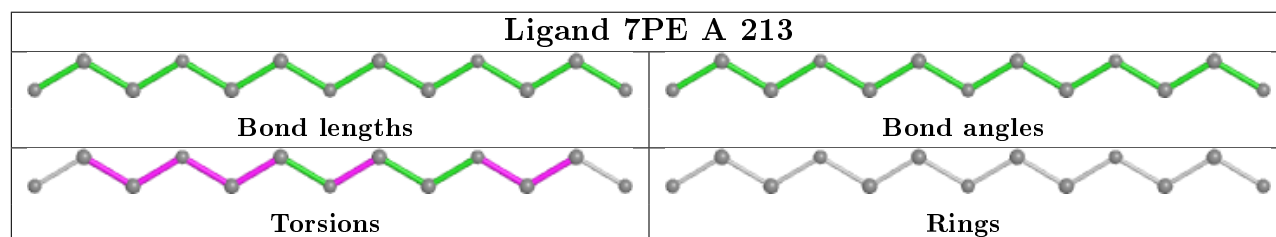
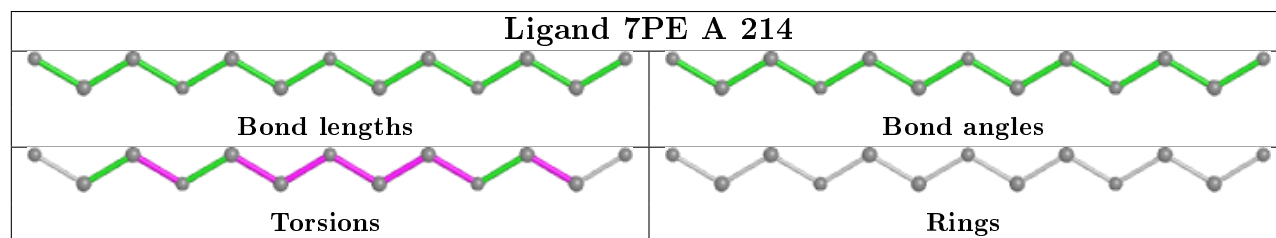
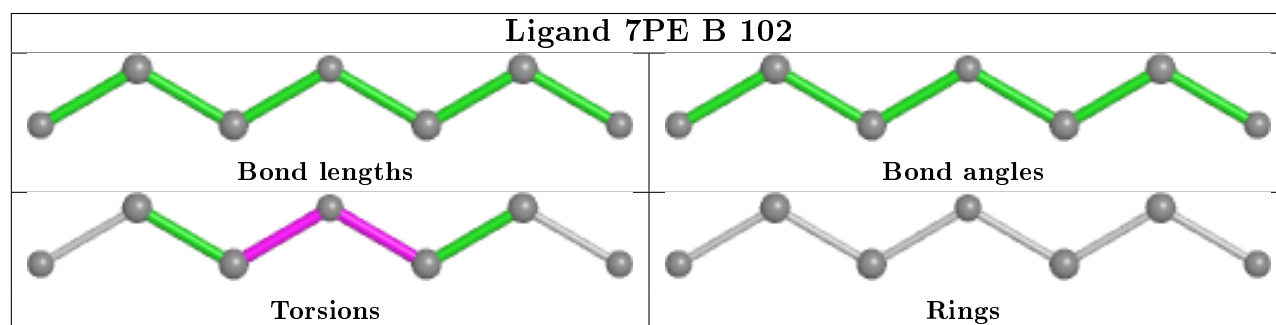
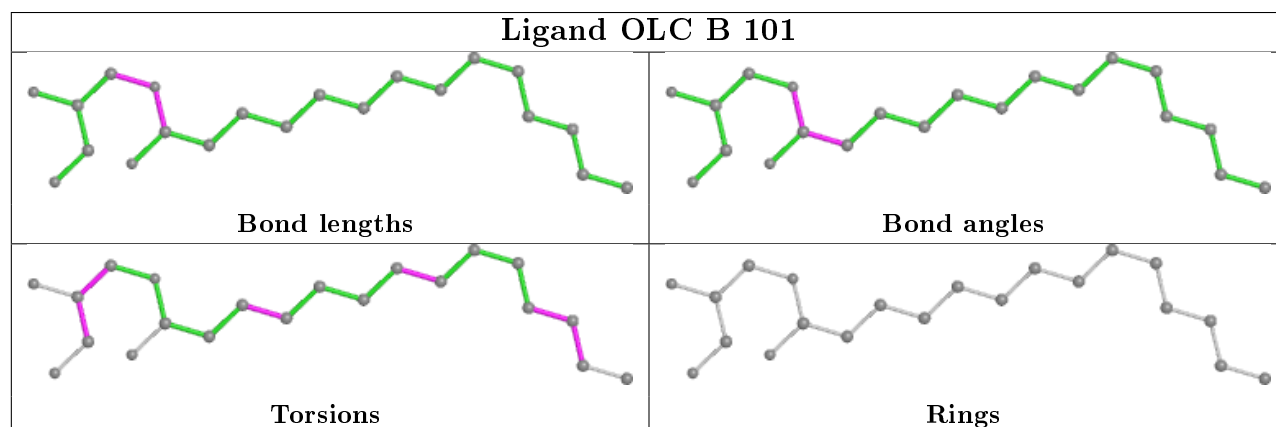
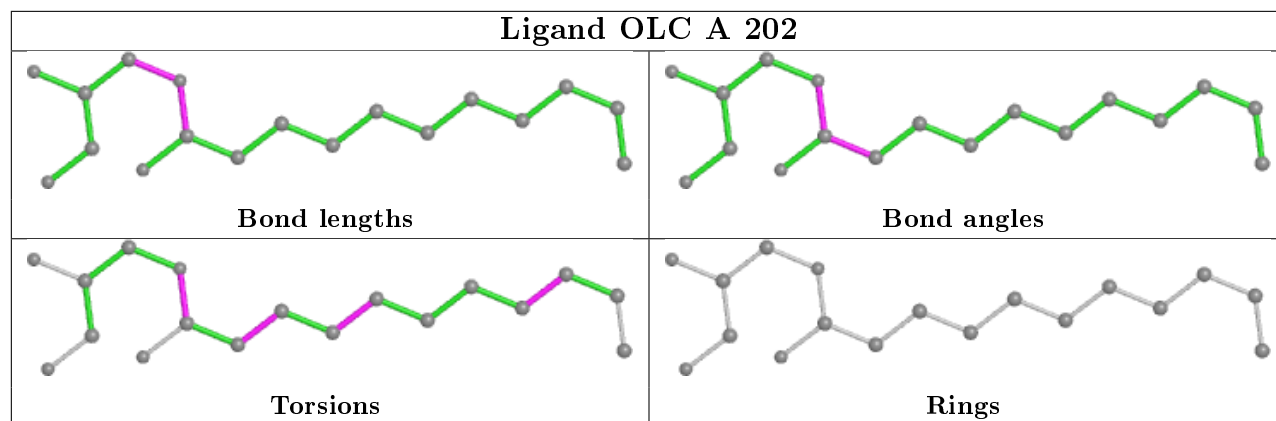
9 monomers are involved in 10 short contacts:

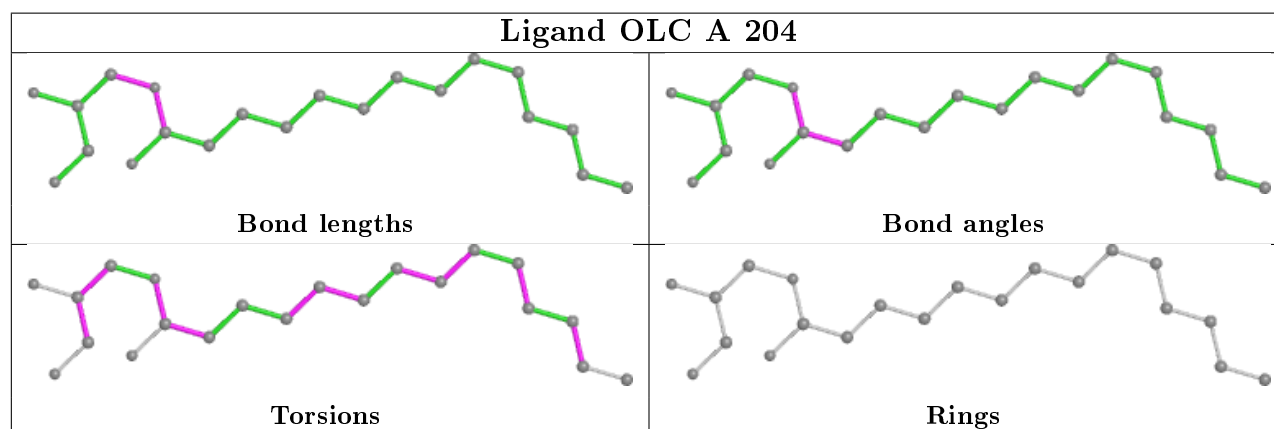
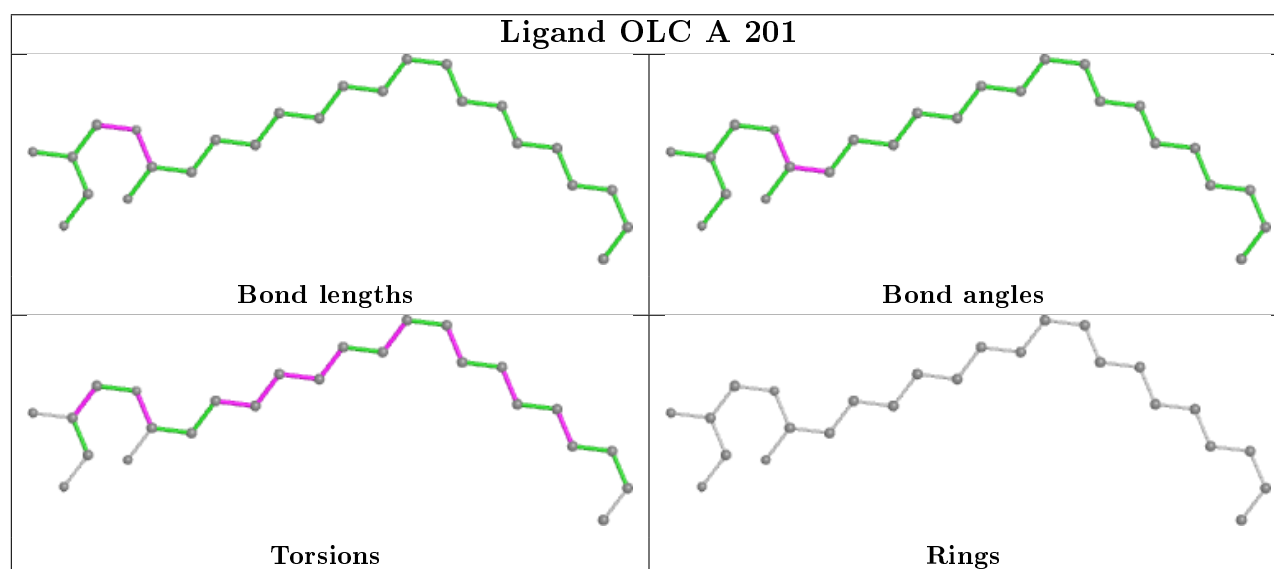
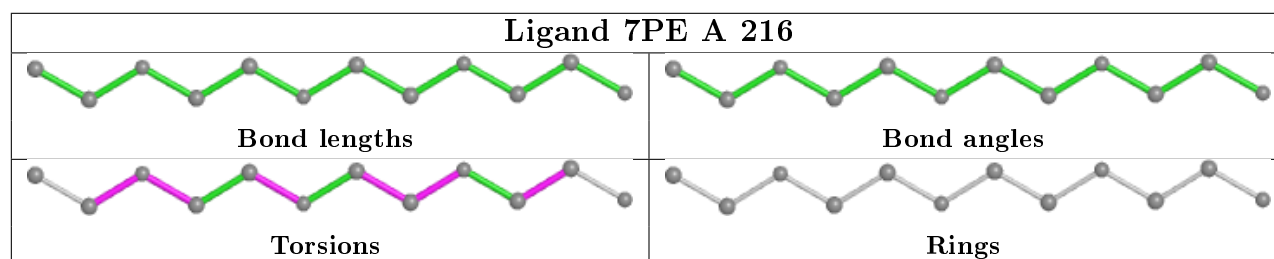
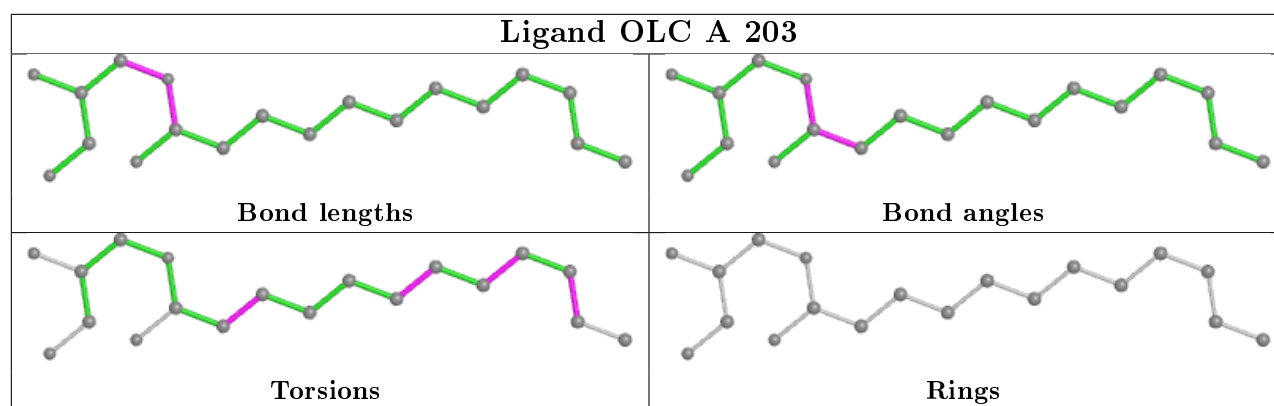
Mol	Chain	Res	Type	Clashes	Symm-Clashes
3	A	205	OLC	1	0
3	A	202	OLC	1	0
5	A	218	7PE	1	0
3	B	101	OLC	2	0
5	A	213	7PE	2	0
3	A	203	OLC	1	0
3	A	201	OLC	2	0
3	A	204	OLC	1	0
5	A	210	7PE	1	0

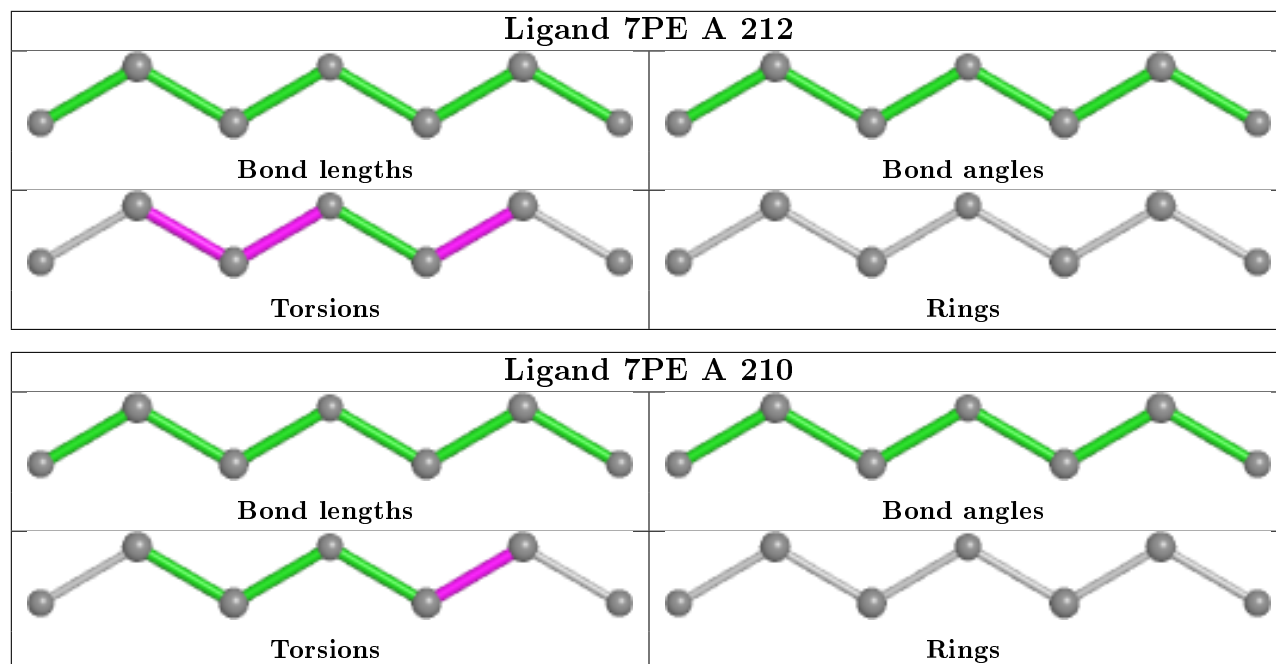
The following is a two-dimensional graphical depiction of Mogul quality analysis of bond lengths, bond angles, torsion angles, and ring geometry for all instances of the Ligand of Interest. In addition, ligands with molecular weight > 250 and outliers as shown on the validation Tables will also be included. For torsion angles, if less than 5% of the Mogul distribution of torsion angles is within 10 degrees of the torsion angle in question, then that torsion angle is considered an outlier. Any bond that is central to one or more torsion angles identified as an outlier by Mogul will be highlighted in the graph. For rings, the root-mean-square deviation (RMSD) between the ring in question and similar rings identified by Mogul is calculated over all ring torsion angles. If the average RMSD is greater than 60 degrees and the minimal RMSD between the ring in question and any Mogul-identified rings is also greater than 60 degrees, then that ring is considered an outlier.

The outliers are highlighted in purple. The color gray indicates Mogul did not find sufficient equivalents in the CSD to analyse the geometry.









5.7 Other polymers [i](#)

There are no such residues in this entry.

5.8 Polymer linkage issues [i](#)

There are no chain breaks in this entry.

6 Fit of model and data [i](#)

6.1 Protein, DNA and RNA chains [i](#)

In the following table, the column labelled ‘#RSRZ> 2’ contains the number (and percentage) of RSRZ outliers, followed by percent RSRZ outliers for the chain as percentile scores relative to all X-ray entries and entries of similar resolution. The OWAB column contains the minimum, median, 95th percentile and maximum values of the occupancy-weighted average B-factor per residue. The column labelled ‘Q< 0.9’ lists the number of (and percentage) of residues with an average occupancy less than 0.9.

Mol	Chain	Analysed	<RSRZ>	#RSRZ>2	OWAB(Å ²)	Q<0.9
1	A	155/187 (82%)	0.36	15 (9%) 7 9	12, 29, 72, 167	0
2	B	1/5 (20%)	-0.36	0 100 100	18, 18, 18, 18	0
All	All	156/192 (81%)	0.35	15 (9%) 8 9	12, 29, 72, 167	0

All (15) RSRZ outliers are listed below:

Mol	Chain	Res	Type	RSRZ
1	A	153	ASP	5.6
1	A	59	ILE	5.5
1	A	154	THR	5.2
1	A	127	TYR	4.6
1	A	123	ASN	4.5
1	A	124	ILE	4.3
1	A	38	PHE	3.8
1	A	88	TYR	3.3
1	A	1	MET	2.8
1	A	80	TYR	2.8
1	A	122	THR	2.6
1	A	7	ILE	2.5
1	A	125	PHE	2.2
1	A	81	PHE	2.1
1	A	149	ALA	2.1

6.2 Non-standard residues in protein, DNA, RNA chains [i](#)

In the following table, the Atoms column lists the number of modelled atoms in the group and the number defined in the chemical component dictionary. The B-factors column lists the minimum, median, 95th percentile and maximum values of B factors of atoms in the group. The column labelled ‘Q< 0.9’ lists the number of atoms with occupancy less than 0.9.

Mol	Type	Chain	Res	Atoms	RSCC	RSR	B-factors(\AA^2)	Q<0.9
2	IIL	B	2	8/9	0.96	0.08	10,13,18,25	0
2	MLE	B	1	9/10	0.96	0.08	9,13,19,20	0
2	ALO	B	4	7/8	0.96	0.08	14,18,21,22	0

6.3 Carbohydrates [i](#)

There are no monosaccharides in this entry.

6.4 Ligands [i](#)

In the following table, the Atoms column lists the number of modelled atoms in the group and the number defined in the chemical component dictionary. The B-factors column lists the minimum, median, 95th percentile and maximum values of B factors of atoms in the group. The column labelled 'Q< 0.9' lists the number of atoms with occupancy less than 0.9.

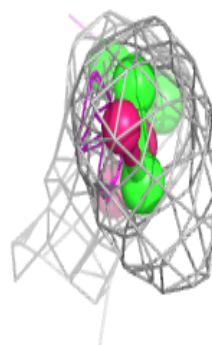
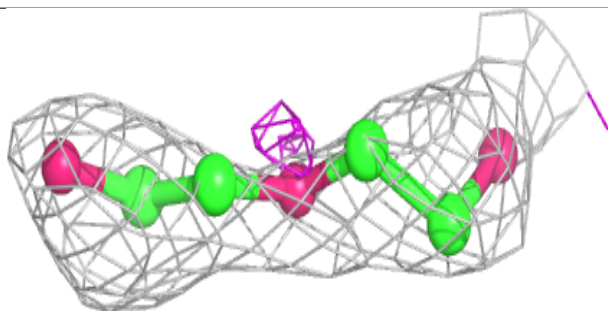
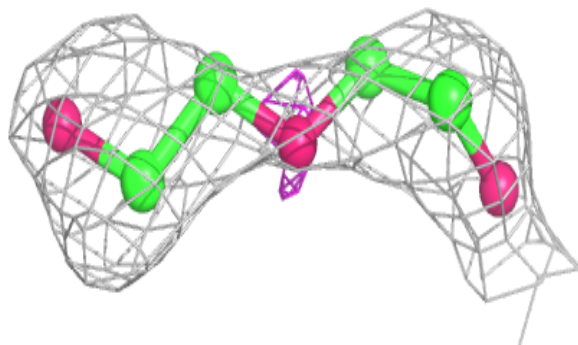
Mol	Type	Chain	Res	Atoms	RSCC	RSR	B-factors(\AA^2)	Q<0.9
4	GOL	A	208	6/6	0.52	0.18	69,76,78,79	0
5	7PE	A	211	7/21	0.61	0.28	55,58,60,60	0
4	GOL	A	206	6/6	0.62	0.27	63,71,71,73	0
4	GOL	A	220	6/6	0.64	0.15	61,70,71,72	0
5	7PE	A	215	9/21	0.64	0.23	32,46,58,58	0
3	OLC	A	205	20/25	0.65	0.43	50,64,84,86	0
5	7PE	A	213	13/21	0.68	0.23	45,63,74,75	0
5	7PE	A	218	5/21	0.68	0.18	63,64,65,65	0
3	OLC	A	201	25/25	0.68	0.27	40,53,72,78	0
5	7PE	B	102	7/21	0.70	0.28	66,67,68,68	0
5	7PE	A	210	7/21	0.72	0.13	60,65,68,70	0
3	OLC	A	203	19/25	0.75	0.21	35,55,66,68	0
5	7PE	A	212	7/21	0.75	0.13	59,59,66,67	0
5	7PE	A	209	7/21	0.76	0.20	38,47,54,54	0
5	7PE	A	216	12/21	0.77	0.16	58,67,72,72	0
5	7PE	A	214	13/21	0.83	0.21	61,68,88,89	0
4	GOL	A	219	6/6	0.85	0.14	56,63,65,67	0
3	OLC	A	202	18/25	0.86	0.18	46,57,65,69	0
4	GOL	A	207	6/6	0.86	0.32	67,67,70,72	0
3	OLC	A	204	21/25	0.88	0.13	30,49,56,60	0
3	OLC	B	101	21/25	0.90	0.18	22,34,45,49	0
6	ZN	A	217	1/1	0.99	0.10	37,37,37,37	0

The following is a graphical depiction of the model fit to experimental electron density of all instances of the Ligand of Interest. In addition, ligands with molecular weight > 250 and outliers as shown on the geometry validation Tables will also be included. Each fit is shown from different

orientation to approximate a three-dimensional view.

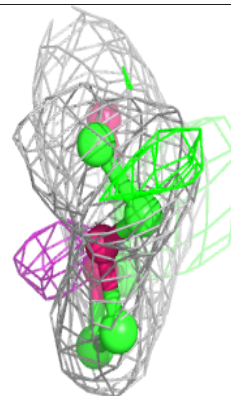
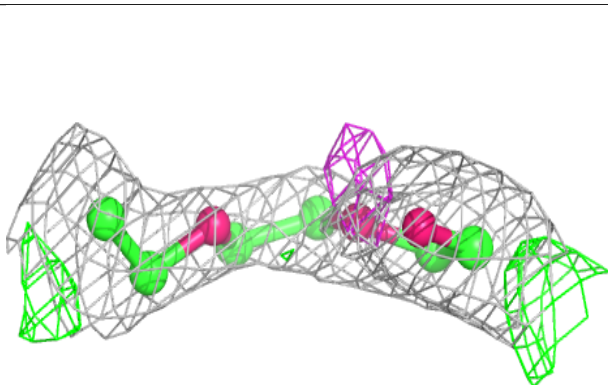
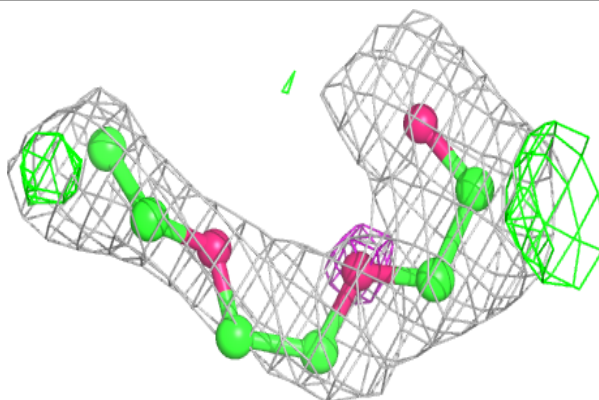
Electron density around 7PE A 211:

$2mF_o-DF_c$ (at 0.7 rmsd) in gray
 mF_o-DF_c (at 3 rmsd) in purple (negative)
and green (positive)



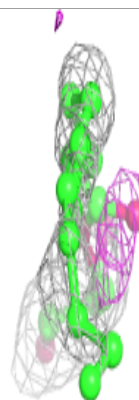
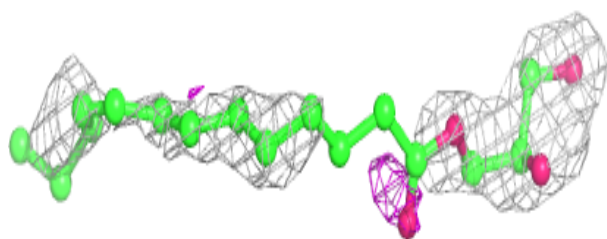
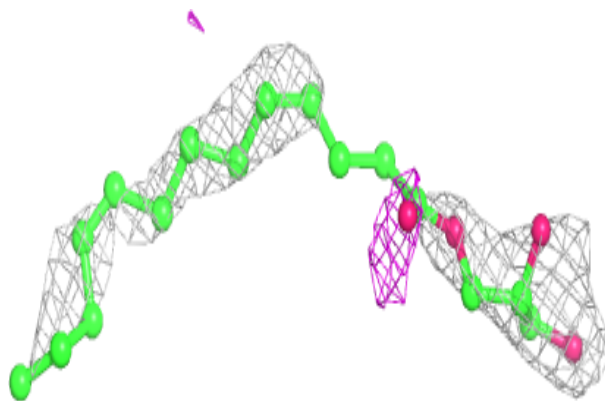
Electron density around 7PE A 215:

$2mF_o-DF_c$ (at 0.7 rmsd) in gray
 mF_o-DF_c (at 3 rmsd) in purple (negative)
and green (positive)



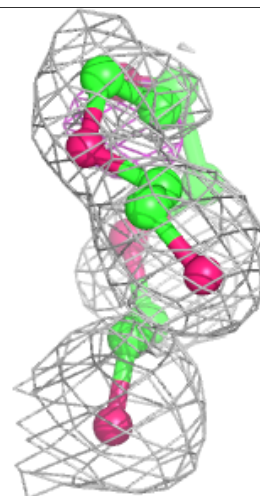
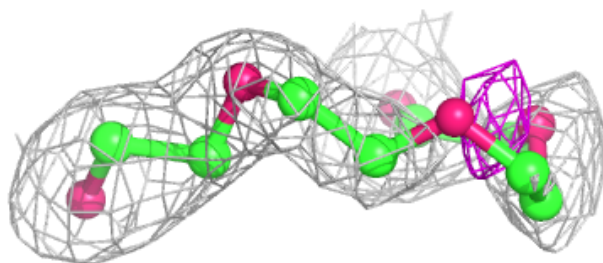
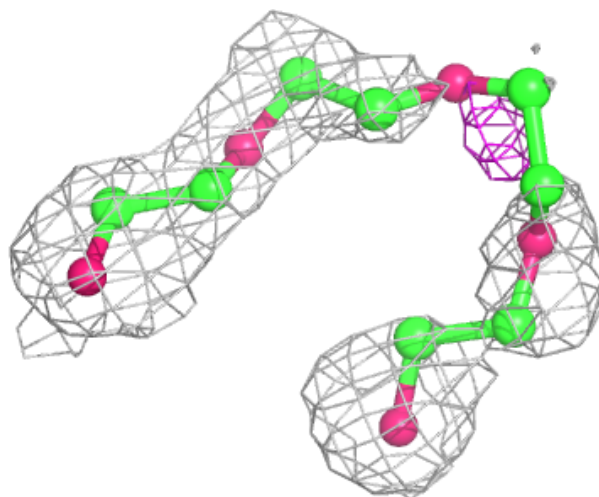
Electron density around OLC A 205:

$2mF_o - DF_c$ (at 0.7 rmsd) in gray
 $mF_o - DF_c$ (at 3 rmsd) in purple (negative)
and green (positive)



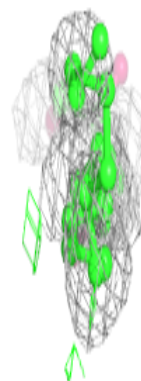
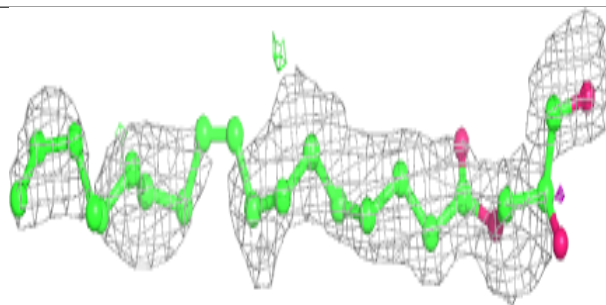
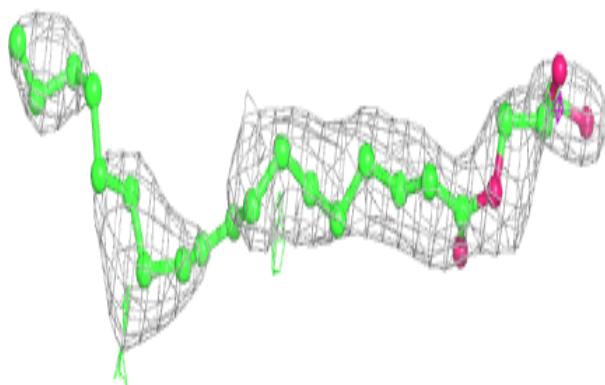
Electron density around 7PE A 213:

$2mF_o-DF_c$ (at 0.7 rmsd) in gray
 mF_o-DF_c (at 3 rmsd) in purple (negative)
and green (positive)

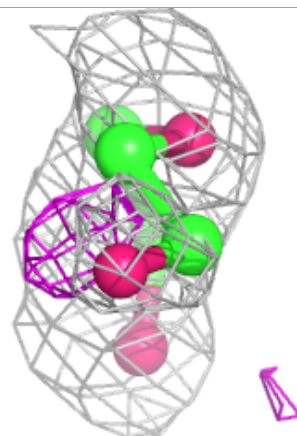
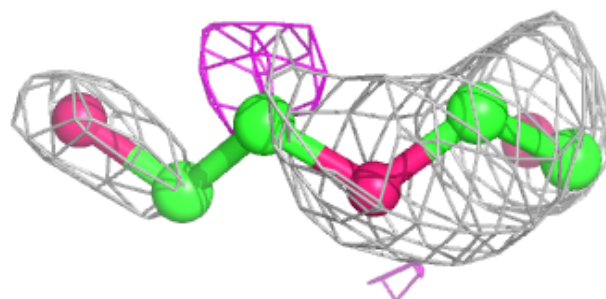
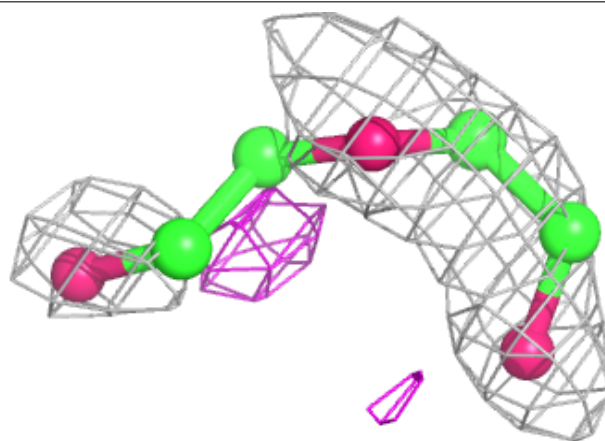


Electron density around OLC A 201:

$2mF_o-DF_c$ (at 0.7 rmsd) in gray
 mF_o-DF_c (at 3 rmsd) in purple (negative)
and green (positive)

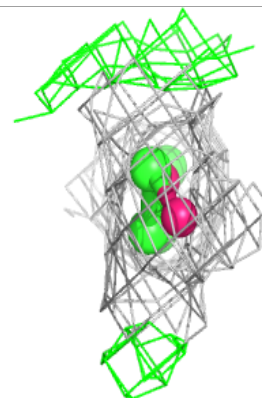
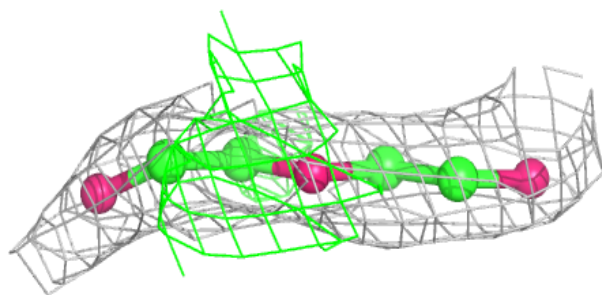
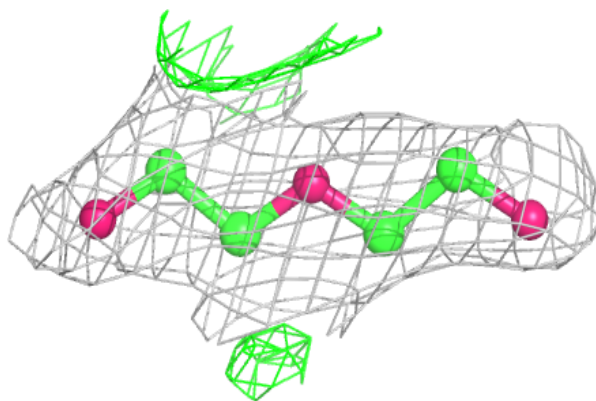
**Electron density around 7PE B 102:**

$2mF_o-DF_c$ (at 0.7 rmsd) in gray
 mF_o-DF_c (at 3 rmsd) in purple (negative)
and green (positive)

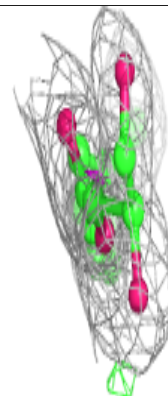
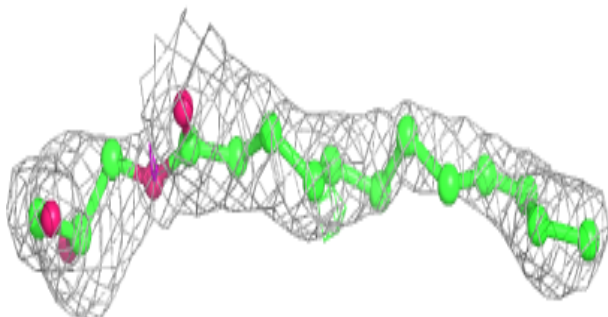
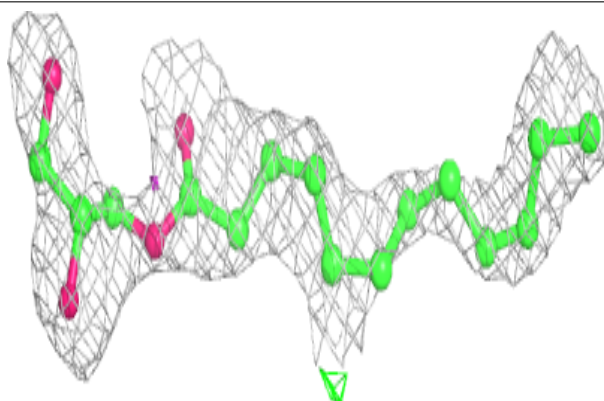


Electron density around 7PE A 210:

$2mF_o-DF_c$ (at 0.7 rmsd) in gray
 mF_o-DF_c (at 3 rmsd) in purple (negative)
and green (positive)

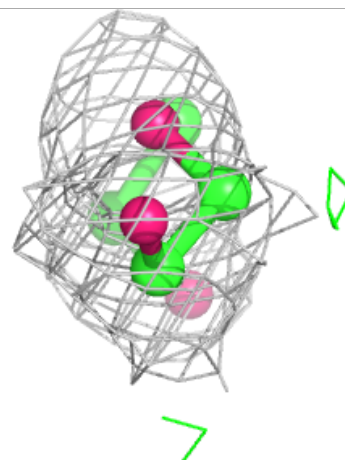
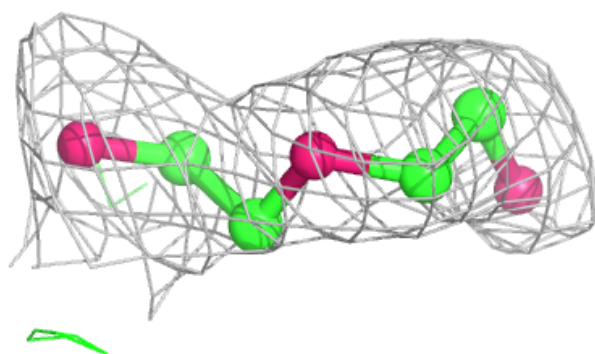
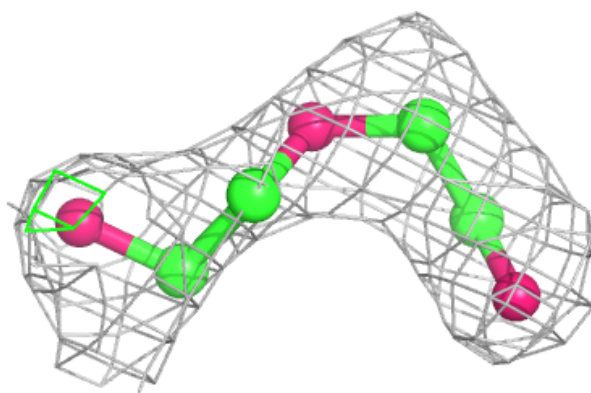
**Electron density around OLC A 203:**

$2mF_o-DF_c$ (at 0.7 rmsd) in gray
 mF_o-DF_c (at 3 rmsd) in purple (negative)
and green (positive)



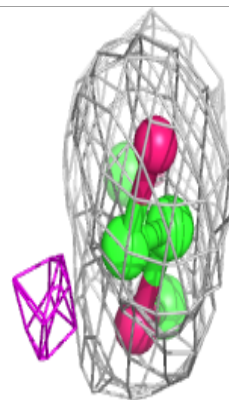
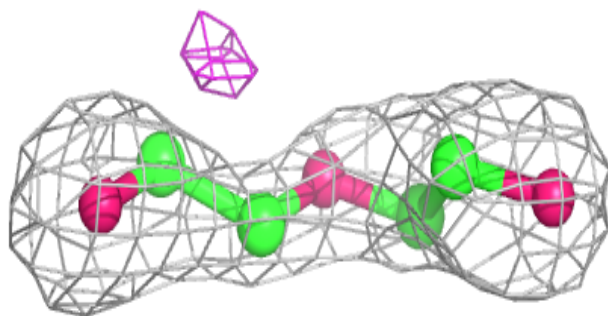
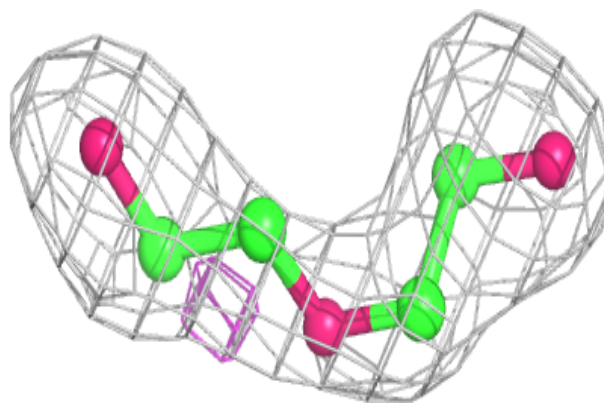
Electron density around 7PE A 212:

$2mF_o-DF_c$ (at 0.7 rmsd) in gray
 mF_o-DF_c (at 3 rmsd) in purple (negative)
and green (positive)

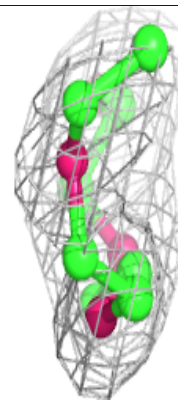
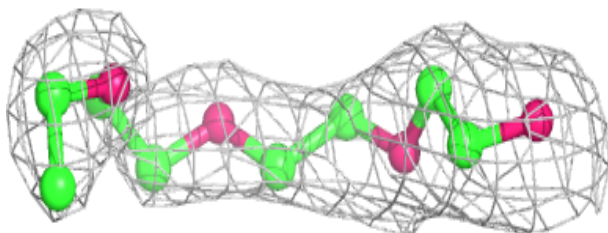
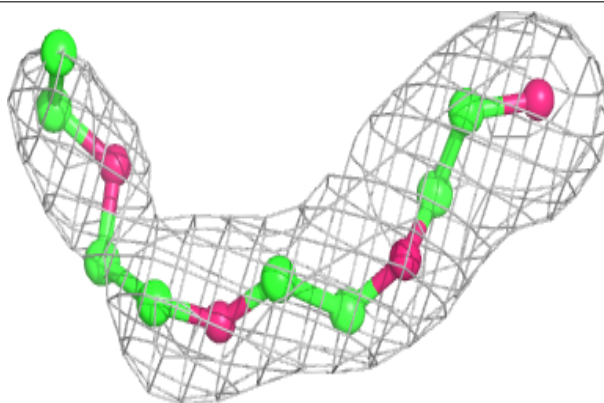


Electron density around 7PE A 209:

$2mF_o-DF_c$ (at 0.7 rmsd) in gray
 mF_o-DF_c (at 3 rmsd) in purple (negative)
and green (positive)

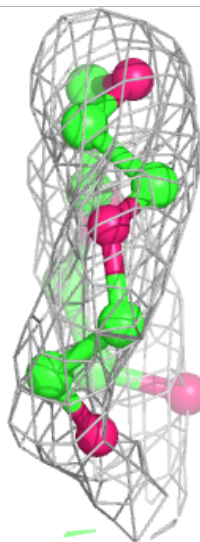
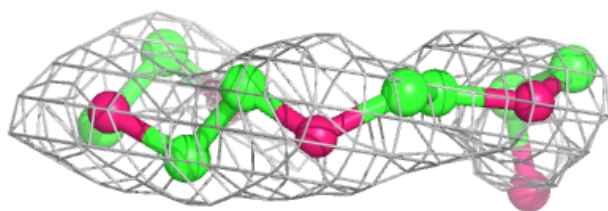
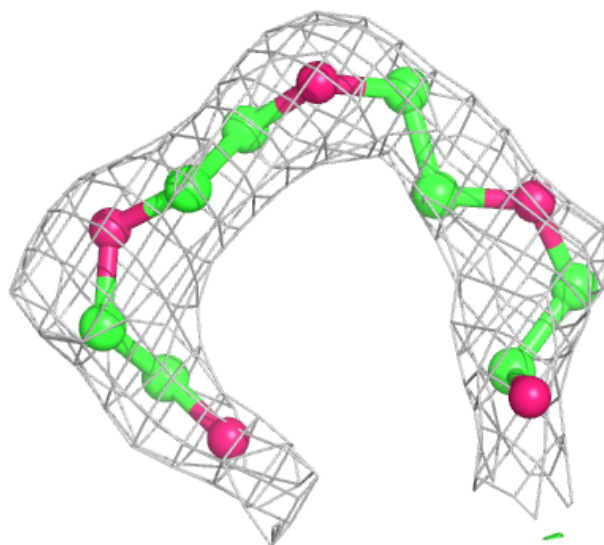
**Electron density around 7PE A 216:**

$2mF_o-DF_c$ (at 0.7 rmsd) in gray
 mF_o-DF_c (at 3 rmsd) in purple (negative)
and green (positive)



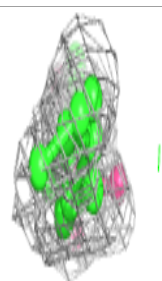
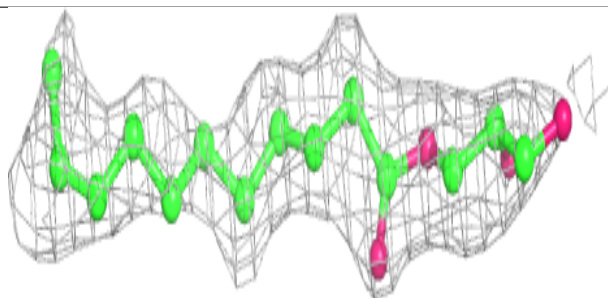
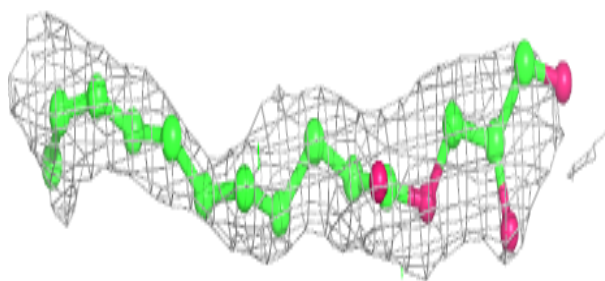
Electron density around 7PE A 214:

$2mF_o-DF_c$ (at 0.7 rmsd) in gray
 mF_o-DF_c (at 3 rmsd) in purple (negative)
and green (positive)

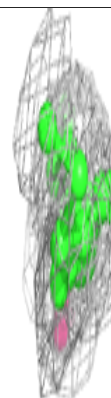
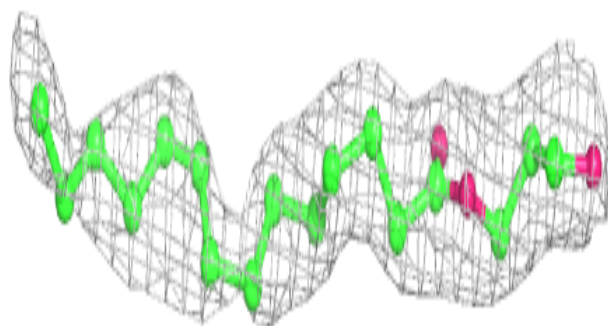
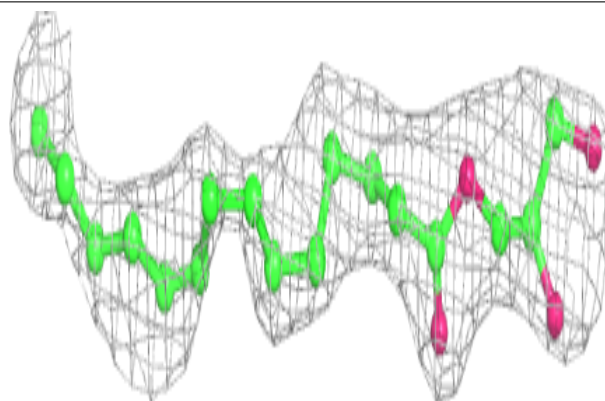


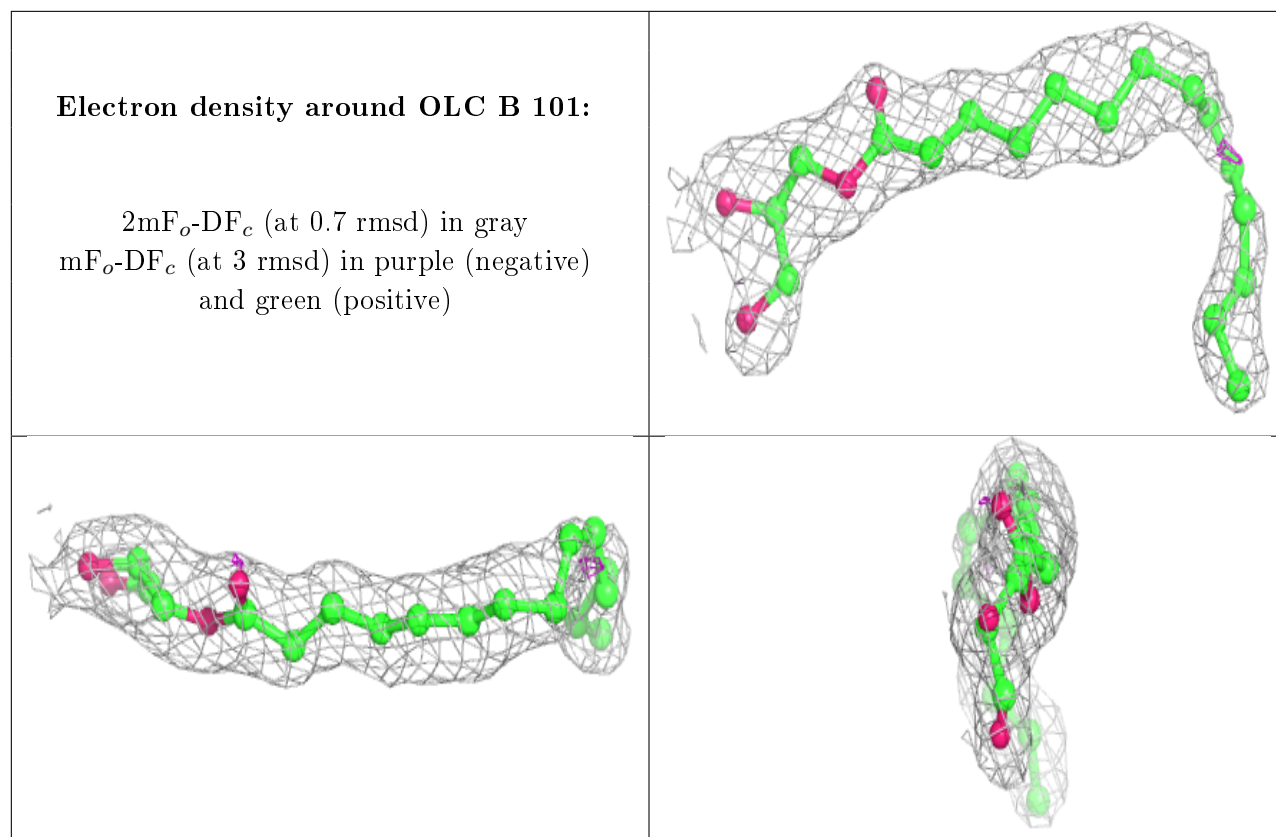
Electron density around OLC A 202:

$2mF_o - DF_c$ (at 0.7 rmsd) in gray
 $mF_o - DF_c$ (at 3 rmsd) in purple (negative)
and green (positive)

**Electron density around OLC A 204:**

$2mF_o - DF_c$ (at 0.7 rmsd) in gray
 $mF_o - DF_c$ (at 3 rmsd) in purple (negative)
and green (positive)





6.5 Other polymers [i](#)

There are no such residues in this entry.