



# Full wwPDB X-ray Structure Validation Report ⓘ

Jun 15, 2020 – 03:57 am BST

PDB ID : 3S46  
Title : The crystal structure of alanine racemase from streptococcus pneumoniae  
Authors : Im, H.; Sharpe, M.L.; Strych, U.; Davlieva, M.; Krause, K.L.  
Deposited on : 2011-05-18  
Resolution : 2.00 Å(reported)

This is a Full wwPDB X-ray Structure Validation Report for a publicly released PDB entry.

We welcome your comments at [validation@mail.wwpdb.org](mailto:validation@mail.wwpdb.org)

A user guide is available at

<https://www.wwpdb.org/validation/2017/XrayValidationReportHelp>

with specific help available everywhere you see the ⓘ symbol.

---

The following versions of software and data (see [references ⓘ](#)) were used in the production of this report:

MolProbity : 4.02b-467  
Mogul : 1.8.5 (274361), CSD as541be (2020)  
Xtriage (Phenix) : 1.13  
EDS : 2.11  
Percentile statistics : 20191225.v01 (using entries in the PDB archive December 25th 2019)  
Refmac : 5.8.0158  
CCP4 : 7.0.044 (Gargrove)  
Ideal geometry (proteins) : Engh & Huber (2001)  
Ideal geometry (DNA, RNA) : Parkinson et al. (1996)  
Validation Pipeline (wwPDB-VP) : 2.11

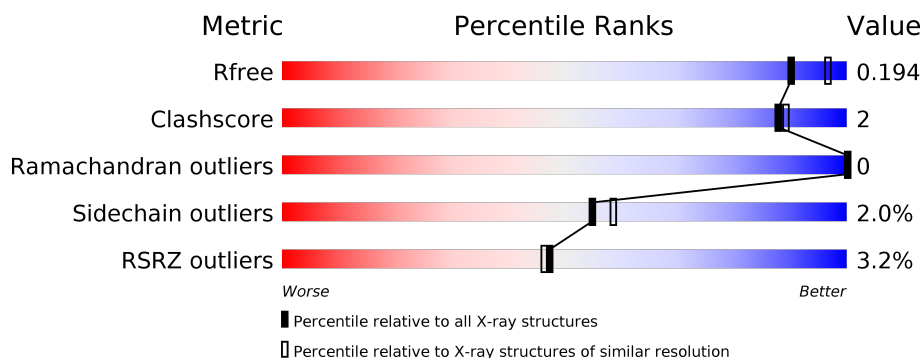
# 1 Overall quality at a glance

The following experimental techniques were used to determine the structure:

*X-RAY DIFFRACTION*

The reported resolution of this entry is 2.00 Å.

Percentile scores (ranging between 0-100) for global validation metrics of the entry are shown in the following graphic. The table shows the number of entries on which the scores are based.



Metric	Whole archive (#Entries)	Similar resolution (#Entries, resolution range(Å))
$R_{free}$	130704	8085 (2.00-2.00)
Clashscore	141614	9178 (2.00-2.00)
Ramachandran outliers	138981	9054 (2.00-2.00)
Sidechain outliers	138945	9053 (2.00-2.00)
RSRZ outliers	127900	7900 (2.00-2.00)

The table below summarises the geometric issues observed across the polymeric chains and their fit to the electron density. The red, orange, yellow and green segments on the lower bar indicate the fraction of residues that contain outliers for  $\geq 3$ , 2, 1 and 0 types of geometric quality criteria respectively. A grey segment represents the fraction of residues that are not modelled. The numeric value for each fraction is indicated below the corresponding segment, with a dot representing fractions  $\leq 5\%$ . The upper red bar (where present) indicates the fraction of residues that have poor fit to the electron density. The numeric value is given above the bar.

Mol	Chain	Length	Quality of chain
1	A	367	<div> <div>2%</div> <div> <div></div> <div>95%</div> <div></div> </div> <div></div> </div>
1	B	367	<div> <div>5%</div> <div> <div></div> <div>93%</div> <div>7%</div> </div> <div></div> </div>

## 2 Entry composition [i](#)

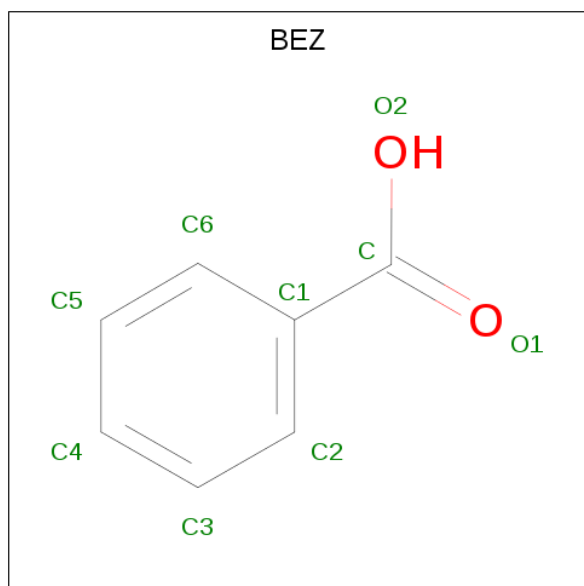
There are 3 unique types of molecules in this entry. The entry contains 6161 atoms, of which 0 are hydrogens and 0 are deuteriums.

In the tables below, the ZeroOcc column contains the number of atoms modelled with zero occupancy, the AltConf column contains the number of residues with at least one atom in alternate conformation and the Trace column contains the number of residues modelled with at most 2 atoms.

- Molecule 1 is a protein called Alanine racemase.

Mol	Chain	Residues	Atoms						ZeroOcc	AltConf	Trace
1	A	367	Total	C	N	O	P	S	0	1	0
			2826	1791	475	545	1	14			
1	B	367	Total	C	N	O	P	S	0	0	0
			2819	1786	473	545	1	14			

- Molecule 2 is BENZOIC ACID (three-letter code: BEZ) (formula:  $C_7H_6O_2$ ).



Mol	Chain	Residues	Atoms			ZeroOcc	AltConf
2	A	1	Total	C	O	0	0
			9	7	2		

- Molecule 3 is water.

Mol	Chain	Residues	Atoms		ZeroOcc	AltConf
3	A	283	Total	O	0	0
			283	283		

*Continued on next page...*

*Continued from previous page...*

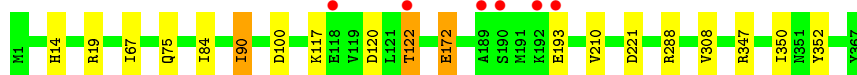
Mol	Chain	Residues	Atoms		ZeroOcc	AltConf
3	B	224	Total 224	O 224	0	0

### 3 Residue-property plots [i](#)

These plots are drawn for all protein, RNA and DNA chains in the entry. The first graphic for a chain summarises the proportions of the various outlier classes displayed in the second graphic. The second graphic shows the sequence view annotated by issues in geometry and electron density. Residues are color-coded according to the number of geometric quality criteria for which they contain at least one outlier: green = 0, yellow = 1, orange = 2 and red = 3 or more. A red dot above a residue indicates a poor fit to the electron density ( $RSRZ > 2$ ). Stretches of 2 or more consecutive residues without any outlier are shown as a green connector. Residues present in the sample, but not in the model, are shown in grey.

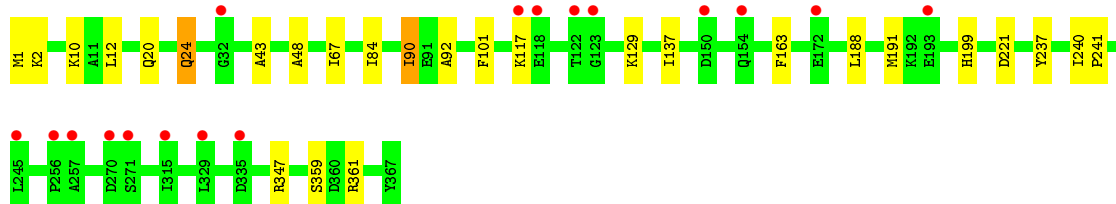
- Molecule 1: Alanine racemase

Chain A:



- Molecule 1: Alanine racemase

Chain B:



## 4 Data and refinement statistics

Property	Value	Source
Space group	P 31 2 1	Depositor
Cell constants a, b, c, $\alpha$ , $\beta$ , $\gamma$	119.97Å 119.97Å 118.10Å 90.00° 90.00° 120.00°	Depositor
Resolution (Å)	23.03 – 2.00 23.03 – 2.00	Depositor EDS
% Data completeness (in resolution range)	99.6 (23.03-2.00) 99.6 (23.03-2.00)	Depositor EDS
$R_{merge}$	0.08	Depositor
$R_{sym}$	(Not available)	Depositor
$\langle I/\sigma(I) \rangle$ <sup>1</sup>	1.13 (at 1.99Å)	Xtriage
Refinement program	CNS, REFMAC	Depositor
R, $R_{free}$	0.168 , 0.200 0.164 , 0.194	Depositor DCC
$R_{free}$ test set	3379 reflections (5.06%)	wwPDB-VP
Wilson B-factor (Å <sup>2</sup> )	33.7	Xtriage
Anisotropy	0.260	Xtriage
Bulk solvent $k_{sol}$ (e/Å <sup>3</sup> ), $B_{sol}$ (Å <sup>2</sup> )	0.33 , 40.0	EDS
L-test for twinning <sup>2</sup>	$\langle  L  \rangle = 0.50$ , $\langle L^2 \rangle = 0.34$	Xtriage
Estimated twinning fraction	0.019 for -h,-k,l	Xtriage
$F_o, F_c$ correlation	0.97	EDS
Total number of atoms	6161	wwPDB-VP
Average B, all atoms (Å <sup>2</sup> )	42.0	wwPDB-VP

Xtriage's analysis on translational NCS is as follows: *The largest off-origin peak in the Patterson function is 3.79% of the height of the origin peak. No significant pseudotranslation is detected.*

<sup>1</sup>Intensities estimated from amplitudes.

<sup>2</sup>Theoretical values of  $\langle |L| \rangle$ ,  $\langle L^2 \rangle$  for acentric reflections are 0.5, 0.333 respectively for untwinned datasets, and 0.375, 0.2 for perfectly twinned datasets.

## 5 Model quality

### 5.1 Standard geometry

Bond lengths and bond angles in the following residue types are not validated in this section: BEZ, LLP, KCX

The Z score for a bond length (or angle) is the number of standard deviations the observed value is removed from the expected value. A bond length (or angle) with  $|Z| > 5$  is considered an outlier worth inspection. RMSZ is the root-mean-square of all Z scores of the bond lengths (or angles).

Mol	Chain	Bond lengths		Bond angles	
		RMSZ	$\# Z  > 5$	RMSZ	$\# Z  > 5$
1	A	0.72	0/2843	0.71	3/3866 (0.1%)
1	B	0.62	0/2832	0.67	2/3851 (0.1%)
All	All	0.67	0/5675	0.69	5/7717 (0.1%)

There are no bond length outliers.

All (5) bond angle outliers are listed below:

Mol	Chain	Res	Type	Atoms	Z	Observed(°)	Ideal(°)
1	A	19	ARG	NE-CZ-NH2	-7.37	116.61	120.30
1	A	347	ARG	NE-CZ-NH2	-6.18	117.21	120.30
1	B	347	ARG	NE-CZ-NH2	-5.73	117.43	120.30
1	A	19	ARG	NE-CZ-NH1	5.73	123.16	120.30
1	B	101	PHE	CB-CA-C	-5.43	99.54	110.40

There are no chirality outliers.

There are no planarity outliers.

### 5.2 Too-close contacts

In the following table, the Non-H and H(model) columns list the number of non-hydrogen atoms and hydrogen atoms in the chain respectively. The H(added) column lists the number of hydrogen atoms added and optimized by MolProbity. The Clashes column lists the number of clashes within the asymmetric unit, whereas Symm-Clashes lists symmetry related clashes.

Mol	Chain	Non-H	H(model)	H(added)	Clashes	Symm-Clashes
1	A	2826	0	2817	9	0
1	B	2819	0	2809	13	0
2	A	9	0	5	0	0
3	A	283	0	0	3	0

*Continued on next page...*

*Continued from previous page...*

Mol	Chain	Non-H	H(model)	H(added)	Clashes	Symm-Clashes
3	B	224	0	0	1	0
All	All	6161	0	5631	22	0

The all-atom clashscore is defined as the number of clashes found per 1000 atoms (including hydrogen atoms). The all-atom clashscore for this structure is 2.

All (22) close contacts within the same asymmetric unit are listed below, sorted by their clash magnitude.

Atom-1	Atom-2	Interatomic distance (Å)	Clash overlap (Å)
1:B:1:MET:HE3	1:B:361:ARG:HD3	1.63	0.80
1:B:188:LEU:HA	1:B:191:MET:HE3	1.65	0.78
1:B:188:LEU:HA	1:B:191:MET:CE	2.20	0.70
1:A:172:GLU:HG3	3:A:434:HOH:O	1.98	0.63
1:A:90:ILE:HG23	1:A:117:LYS:HD3	1.86	0.58
1:A:67:ILE:HG12	1:A:84:ILE:HD13	1.83	0.58
1:A:14[B]:HIS:CE1	3:A:519:HOH:O	2.60	0.53
1:B:24:GLN:OE1	1:B:237:TYR:HB2	2.11	0.51
1:B:20:GLN:NE2	3:B:544:HOH:O	2.39	0.49
1:A:90:ILE:HG23	1:A:117:LYS:CD	2.43	0.48
1:A:210:VAL:HG23	3:A:409:HOH:O	2.13	0.48
1:A:350:ILE:HD12	1:A:352:TYR:CD2	2.51	0.45
1:B:129:KCX:HG3	1:B:137:ILE:HG13	1.99	0.45
1:B:43:ALA:HB2	1:B:48:ALA:HA	2.00	0.44
1:B:84:ILE:N	1:B:84:ILE:HD12	2.32	0.44
1:B:67:ILE:HD13	1:B:92:ALA:HB1	2.02	0.42
1:B:240:ILE:HA	1:B:241:PRO:HD3	1.88	0.41
1:A:120:ASP:OD1	1:A:122:THR:HB	2.20	0.41
1:B:90:ILE:CG2	1:B:117:LYS:HD3	2.49	0.41
1:A:288:ARG:HA	1:A:308:VAL:HB	2.03	0.40
1:B:163:PHE:HB2	1:B:199:HIS:O	2.22	0.40
1:B:10:LYS:HE3	1:B:12:LEU:HD21	2.03	0.40

There are no symmetry-related clashes.

## 5.3 Torsion angles ⓘ

### 5.3.1 Protein backbone ⓘ

In the following table, the Percentiles column shows the percent Ramachandran outliers of the chain as a percentile score with respect to all X-ray entries followed by that with respect to entries of similar resolution.



The Analysed column shows the number of residues for which the backbone conformation was analysed, and the total number of residues.

Mol	Chain	Analysed	Favoured	Allowed	Outliers	Percentiles	
1	A	364/367 (99%)	353 (97%)	11 (3%)	0	100	100
1	B	363/367 (99%)	347 (96%)	16 (4%)	0	100	100
All	All	727/734 (99%)	700 (96%)	27 (4%)	0	100	100

There are no Ramachandran outliers to report.

### 5.3.2 Protein sidechains ⓘ

In the following table, the Percentiles column shows the percent sidechain outliers of the chain as a percentile score with respect to all X-ray entries followed by that with respect to entries of similar resolution.

The Analysed column shows the number of residues for which the sidechain conformation was analysed, and the total number of residues.

Mol	Chain	Analysed	Rotameric	Outliers	Percentiles	
1	A	298/297 (100%)	291 (98%)	7 (2%)	50	53
1	B	297/297 (100%)	292 (98%)	5 (2%)	60	65
All	All	595/594 (100%)	583 (98%)	12 (2%)	55	58

All (12) residues with a non-rotameric sidechain are listed below:

Mol	Chain	Res	Type
1	A	75	GLN
1	A	90	ILE
1	A	100	ASP
1	A	122	THR
1	A	172	GLU
1	A	193	GLU
1	A	221	ASP
1	B	2	LYS
1	B	24	GLN
1	B	90	ILE
1	B	221	ASP
1	B	359	SER

Some sidechains can be flipped to improve hydrogen bonding and reduce clashes. There are no such sidechains identified.

### 5.3.3 RNA ⓘ

There are no RNA molecules in this entry.

## 5.4 Non-standard residues in protein, DNA, RNA chains ⓘ

4 non-standard protein/DNA/RNA residues are modelled in this entry.

In the following table, the Counts columns list the number of bonds (or angles) for which Mogul statistics could be retrieved, the number of bonds (or angles) that are observed in the model and the number of bonds (or angles) that are defined in the Chemical Component Dictionary. The Link column lists molecule types, if any, to which the group is linked. The Z score for a bond length (or angle) is the number of standard deviations the observed value is removed from the expected value. A bond length (or angle) with  $|Z| > 2$  is considered an outlier worth inspection. RMSZ is the root-mean-square of all Z scores of the bond lengths (or angles).

Mol	Type	Chain	Res	Link	Bond lengths			Bond angles		
					Counts	RMSZ	# $ Z  > 2$	Counts	RMSZ	# $ Z  > 2$
1	LLP	B	40	1	23,24,25	2.01	7 (30%)	25,32,34	1.60	3 (12%)
1	KCX	B	129	1	7,11,12	0.89	0	4,12,14	1.52	1 (25%)
1	LLP	A	40	1	23,24,25	1.99	6 (26%)	25,32,34	1.73	8 (32%)
1	KCX	A	129	1	7,11,12	0.75	0	4,12,14	1.22	0

In the following table, the Chirals column lists the number of chiral outliers, the number of chiral centers analysed, the number of these observed in the model and the number defined in the Chemical Component Dictionary. Similar counts are reported in the Torsion and Rings columns. '-' means no outliers of that kind were identified.

Mol	Type	Chain	Res	Link	Chirals	Torsions	Rings
1	LLP	B	40	1	-	2/16/17/19	0/1/1/1
1	KCX	B	129	1	-	1/7/10/12	-
1	LLP	A	40	1	-	3/16/17/19	0/1/1/1
1	KCX	A	129	1	-	1/7/10/12	-

All (13) bond length outliers are listed below:

Mol	Chain	Res	Type	Atoms	Z	Observed(Å)	Ideal(Å)
1	B	40	LLP	O3-C3	-5.25	1.24	1.37
1	A	40	LLP	O3-C3	-5.01	1.25	1.37
1	A	40	LLP	C2-N1	3.50	1.40	1.33
1	A	40	LLP	C4'-NZ	3.36	1.38	1.27
1	B	40	LLP	CE-NZ	3.32	1.54	1.46
1	B	40	LLP	C4'-NZ	3.26	1.38	1.27

*Continued on next page...*

*Continued from previous page...*

Mol	Chain	Res	Type	Atoms	Z	Observed(Å)	Ideal(Å)
1	A	40	LLP	C4-C4'	3.19	1.52	1.46
1	B	40	LLP	C2-N1	3.16	1.39	1.33
1	A	40	LLP	CE-NZ	2.80	1.52	1.46
1	B	40	LLP	C4-C4'	2.63	1.51	1.46
1	B	40	LLP	P-OP2	-2.55	1.45	1.54
1	A	40	LLP	C6-N1	2.48	1.39	1.34
1	B	40	LLP	C6-N1	2.40	1.39	1.34

All (12) bond angle outliers are listed below:

Mol	Chain	Res	Type	Atoms	Z	Observed(°)	Ideal(°)
1	B	40	LLP	CD-CE-NZ	4.11	120.99	110.93
1	A	40	LLP	CD-CE-NZ	3.72	120.04	110.93
1	B	40	LLP	C4-C4'-NZ	-3.64	107.62	124.31
1	A	40	LLP	C4-C4'-NZ	-3.60	107.79	124.31
1	B	40	LLP	C5-C6-N1	-2.90	119.00	123.82
1	B	129	KCX	CD-CE-NZ	2.76	118.90	111.49
1	A	40	LLP	OP2-P-OP4	-2.42	100.31	106.73
1	A	40	LLP	C5-C6-N1	-2.41	119.81	123.82
1	A	40	LLP	C3-C4-C5	2.40	120.10	118.26
1	A	40	LLP	OP3-P-OP4	-2.09	101.18	106.73
1	A	40	LLP	C3-C4-C4'	-2.04	116.61	120.41
1	A	40	LLP	C2'-C2-N1	2.02	121.62	117.67

There are no chirality outliers.

All (7) torsion outliers are listed below:

Mol	Chain	Res	Type	Atoms
1	B	40	LLP	C4-C4'-NZ-CE
1	A	40	LLP	C4-C4'-NZ-CE
1	A	40	LLP	C3-C4-C4'-NZ
1	A	129	KCX	CA-CB-CG-CD
1	B	129	KCX	CG-CD-CE-NZ
1	B	40	LLP	C3-C4-C4'-NZ
1	A	40	LLP	C5-C4-C4'-NZ

There are no ring outliers.

1 monomer is involved in 1 short contact:

Mol	Chain	Res	Type	Clashes	Symm-Clashes
1	B	129	KCX	1	0

## 5.5 Carbohydrates

There are no carbohydrates in this entry.

## 5.6 Ligand geometry

1 ligand is modelled in this entry.

In the following table, the Counts columns list the number of bonds (or angles) for which Mogul statistics could be retrieved, the number of bonds (or angles) that are observed in the model and the number of bonds (or angles) that are defined in the Chemical Component Dictionary. The Link column lists molecule types, if any, to which the group is linked. The Z score for a bond length (or angle) is the number of standard deviations the observed value is removed from the expected value. A bond length (or angle) with  $|Z| > 2$  is considered an outlier worth inspection. RMSZ is the root-mean-square of all Z scores of the bond lengths (or angles).

Mol	Type	Chain	Res	Link	Bond lengths			Bond angles		
					Counts	RMSZ	$\# Z  > 2$	Counts	RMSZ	$\# Z  > 2$
2	BEZ	A	369	-	7,9,9	1.49	1 (14%)	8,11,11	0.79	0

In the following table, the Chirals column lists the number of chiral outliers, the number of chiral centers analysed, the number of these observed in the model and the number defined in the Chemical Component Dictionary. Similar counts are reported in the Torsion and Rings columns. '-' means no outliers of that kind were identified.

Mol	Type	Chain	Res	Link	Chirals	Torsions	Rings
2	BEZ	A	369	-	-	0/0/4/4	0/1/1/1

All (1) bond length outliers are listed below:

Mol	Chain	Res	Type	Atoms	Z	Observed(Å)	Ideal(Å)
2	A	369	BEZ	C1-C	3.59	1.50	1.47

There are no bond angle outliers.

There are no chirality outliers.

There are no torsion outliers.

There are no ring outliers.

No monomer is involved in short contacts.

## 5.7 Other polymers

There are no such residues in this entry.

## 5.8 Polymer linkage issues

There are no chain breaks in this entry.

## 6 Fit of model and data

### 6.1 Protein, DNA and RNA chains

In the following table, the column labelled ‘#RSRZ> 2’ contains the number (and percentage) of RSRZ outliers, followed by percent RSRZ outliers for the chain as percentile scores relative to all X-ray entries and entries of similar resolution. The OWAB column contains the minimum, median, 95<sup>th</sup> percentile and maximum values of the occupancy-weighted average B-factor per residue. The column labelled ‘Q< 0.9’ lists the number of (and percentage) of residues with an average occupancy less than 0.9.

Mol	Chain	Analysed	<RSRZ>	#RSRZ>2	OWAB(Å <sup>2</sup> )	Q<0.9
1	A	365/367 (99%)	-0.37	6 (1%) 72 70	21, 33, 68, 82	9 (2%)
1	B	365/367 (99%)	-0.08	17 (4%) 31 30	27, 45, 69, 82	9 (2%)
All	All	730/734 (99%)	-0.22	23 (3%) 47 46	21, 40, 69, 82	18 (2%)

All (23) RSRZ outliers are listed below:

Mol	Chain	Res	Type	RSRZ
1	B	270	ASP	4.5
1	B	117	LYS	4.3
1	B	335	ASP	4.3
1	B	122	THR	3.7
1	A	118	GLU	3.6
1	B	118	GLU	3.4
1	A	122	THR	3.1
1	A	190	SER	3.1
1	B	193	GLU	2.9
1	B	271	SER	2.8
1	A	193	GLU	2.8
1	B	150	ASP	2.7
1	B	123	GLY	2.6
1	B	315	ILE	2.6
1	A	192	LYS	2.5
1	B	329	LEU	2.5
1	B	172	GLU	2.4
1	A	189	ALA	2.3
1	B	257	ALA	2.2
1	B	154	GLN	2.1
1	B	256	PRO	2.1
1	B	32	GLY	2.1
1	B	245	LEU	2.0

## 6.2 Non-standard residues in protein, DNA, RNA chains [i](#)

In the following table, the Atoms column lists the number of modelled atoms in the group and the number defined in the chemical component dictionary. The B-factors column lists the minimum, median, 95<sup>th</sup> percentile and maximum values of B factors of atoms in the group. The column labelled 'Q< 0.9' lists the number of atoms with occupancy less than 0.9.

Mol	Type	Chain	Res	Atoms	RSCC	RSR	B-factors( $\text{\AA}^2$ )	Q<0.9
1	LLP	B	40	24/25	0.96	0.11	29,40,45,47	0
1	KCX	A	129	12/13	0.96	0.10	38,42,45,46	0
1	LLP	A	40	24/25	0.97	0.10	27,34,37,39	0
1	KCX	B	129	12/13	0.98	0.14	34,36,37,37	0

## 6.3 Carbohydrates [i](#)

There are no carbohydrates in this entry.

## 6.4 Ligands [i](#)

In the following table, the Atoms column lists the number of modelled atoms in the group and the number defined in the chemical component dictionary. The B-factors column lists the minimum, median, 95<sup>th</sup> percentile and maximum values of B factors of atoms in the group. The column labelled 'Q< 0.9' lists the number of atoms with occupancy less than 0.9.

Mol	Type	Chain	Res	Atoms	RSCC	RSR	B-factors( $\text{\AA}^2$ )	Q<0.9
2	BEZ	A	369	9/9	0.93	0.17	40,44,47,48	0

## 6.5 Other polymers [i](#)

There are no such residues in this entry.