



# Full wwPDB X-ray Structure Validation Report ⓘ

Jun 21, 2021 – 03:33 PM EDT

PDB ID : 5S57  
Title : Tubulin-Z2856434883-complex  
Authors : Muehlethaler, T.; Gioia, D.; Protá, A.E.; Sharpe, M.E.; Cavalli, A.; Steinmetz, M.O.  
Deposited on : 2020-11-08  
Resolution : 2.45 Å(reported)

This is a Full wwPDB X-ray Structure Validation Report for a publicly released PDB entry.

We welcome your comments at [validation@mail.wwpdb.org](mailto:validation@mail.wwpdb.org)

A user guide is available at

<https://www.wwpdb.org/validation/2017/XrayValidationReportHelp>

with specific help available everywhere you see the ⓘ symbol.

---

The following versions of software and data (see [references ⓘ](#)) were used in the production of this report:

MolProbity	:	4.02b-467
Mogul	:	1.8.5 (274361), CSD as541be (2020)
Xtriage (Phenix)	:	1.13
EDS	:	2.20
buster-report	:	1.1.7 (2018)
Percentile statistics	:	20191225.v01 (using entries in the PDB archive December 25th 2019)
Refmac	:	5.8.0158
CCP4	:	7.0.044 (Gargrove)
Ideal geometry (proteins)	:	Engh & Huber (2001)
Ideal geometry (DNA, RNA)	:	Parkinson et al. (1996)
Validation Pipeline (wwPDB-VP)	:	2.20

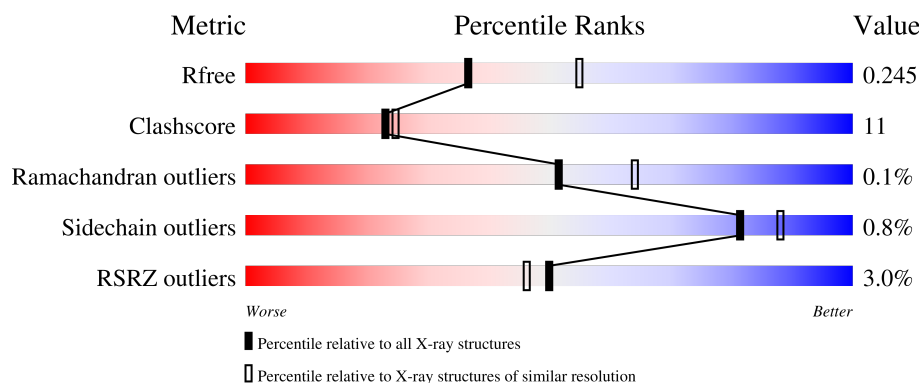
# 1 Overall quality at a glance

The following experimental techniques were used to determine the structure:

*X-RAY DIFFRACTION*


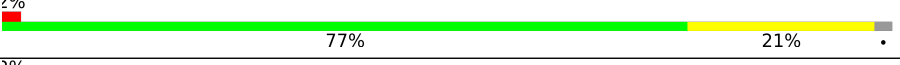



The reported resolution of this entry is 2.45 Å.

Percentile scores (ranging between 0-100) for global validation metrics of the entry are shown in the following graphic. The table shows the number of entries on which the scores are based.



Metric	Whole archive (#Entries)	Similar resolution (#Entries, resolution range(Å))
$R_{free}$	130704	1544 (2.48-2.44)
Clashscore	141614	1613 (2.48-2.44)
Ramachandran outliers	138981	1598 (2.48-2.44)
Sidechain outliers	138945	1598 (2.48-2.44)
RSRZ outliers	127900	1523 (2.48-2.44)

The table below summarises the geometric issues observed across the polymeric chains and their fit to the electron density. The red, orange, yellow and green segments of the lower bar indicate the fraction of residues that contain outliers for  $\geq 3$ , 2, 1 and 0 types of geometric quality criteria respectively. A grey segment represents the fraction of residues that are not modelled. The numeric value for each fraction is indicated below the corresponding segment, with a dot representing fractions  $\leq 5\%$ . The upper red bar (where present) indicates the fraction of residues that have poor fit to the electron density. The numeric value is given above the bar.

Mol	Chain	Length	Quality of chain
1	A	451	
1	C	451	
2	B	445	
2	D	445	
3	E	143	

*Continued on next page...*

Continued from previous page...

Mol	Chain	Length	Quality of chain
4	F	384	<div><div></div><div>3%</div><div>67%</div><div>21%</div><div>•</div><div>11%</div></div>

## 2 Entry composition

There are 11 unique types of molecules in this entry. The entry contains 17797 atoms, of which 22 are hydrogens and 0 are deuteriums.

In the tables below, the ZeroOcc column contains the number of atoms modelled with zero occupancy, the AltConf column contains the number of residues with at least one atom in alternate conformation and the Trace column contains the number of residues modelled with at most 2 atoms.

- Molecule 1 is a protein called Tubulin alpha-1B chain.

Mol	Chain	Residues	Atoms					ZeroOcc	AltConf	Trace
1	A	438	Total	C	N	O	S	0	0	0
			3424	2167	582	653	22			
1	C	440	Total	C	N	O	S	0	1	0
			3443	2178	585	657	23			

- Molecule 2 is a protein called Tubulin beta-2B chain.

Mol	Chain	Residues	Atoms					ZeroOcc	AltConf	Trace
2	B	423	Total	C	N	O	S	1	1	0
			3339	2098	571	643	27			
2	D	427	Total	C	N	O	S	5	0	0
			3348	2101	571	649	27			

- Molecule 3 is a protein called Stathmin-4.

Mol	Chain	Residues	Atoms					ZeroOcc	AltConf	Trace
3	E	123	Total	C	N	O	S	0	0	0
			1014	625	183	201	5			

There are 2 discrepancies between the modelled and reference sequences:

Chain	Residue	Modelled	Actual	Comment	Reference
E	3	MET	-	initiating methionine	UNP P63043
E	4	ALA	-	expression tag	UNP P63043

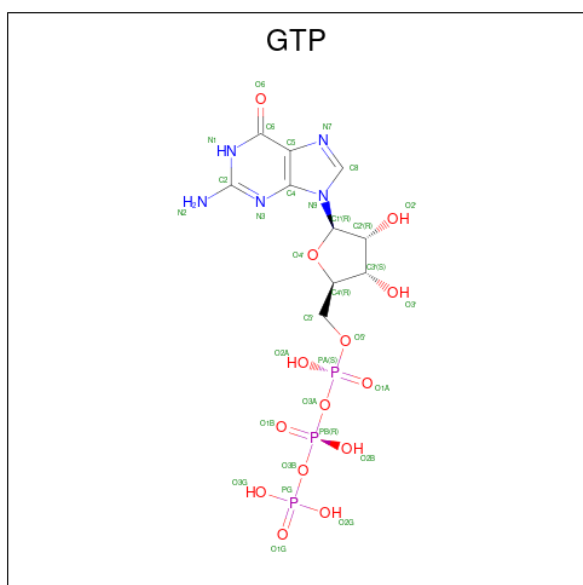
- Molecule 4 is a protein called Tubulin-Tyrosine Ligase.

Mol	Chain	Residues	Atoms					ZeroOcc	AltConf	Trace
4	F	341	Total	C	N	O	S	0	0	0
			2797	1795	479	509	14			

There are 6 discrepancies between the modelled and reference sequences:

Chain	Residue	Modelled	Actual	Comment	Reference
F	379	HIS	-	expression tag	UNP E1BQ43
F	380	HIS	-	expression tag	UNP E1BQ43
F	381	HIS	-	expression tag	UNP E1BQ43
F	382	HIS	-	expression tag	UNP E1BQ43
F	383	HIS	-	expression tag	UNP E1BQ43
F	384	HIS	-	expression tag	UNP E1BQ43

- Molecule 5 is GUANOSINE-5'-TRIPHOSPHATE (three-letter code: GTP) (formula:  $C_{10}H_{16}N_5O_{14}P_3$ ).



Mol	Chain	Residues	Atoms					ZeroOcc	AltConf
5	A	1	Total	C	N	O	P	0	0
			32	10	5	14	3		
5	C	1	Total	C	N	O	P	0	0
			32	10	5	14	3		

- Molecule 6 is MAGNESIUM ION (three-letter code: MG) (formula: Mg).

Mol	Chain	Residues	Atoms		ZeroOcc	AltConf
6	A	1	Total	Mg	0	0
			1	1		
6	B	1	Total	Mg	0	0
			1	1		
6	C	1	Total	Mg	0	0
			1	1		
6	D	1	Total	Mg	0	0
			1	1		

*Continued on next page...*

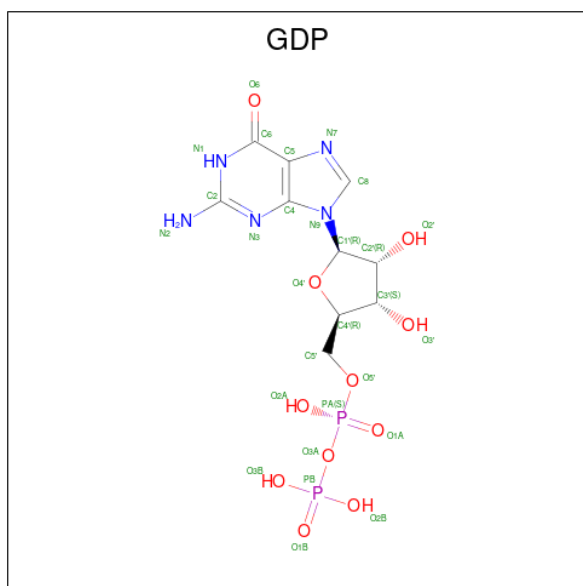
Continued from previous page...

Mol	Chain	Residues	Atoms		ZeroOcc	AltConf
6	F	1	Total	Mg	0	0
			1	1		

- Molecule 7 is CALCIUM ION (three-letter code: CA) (formula: Ca).

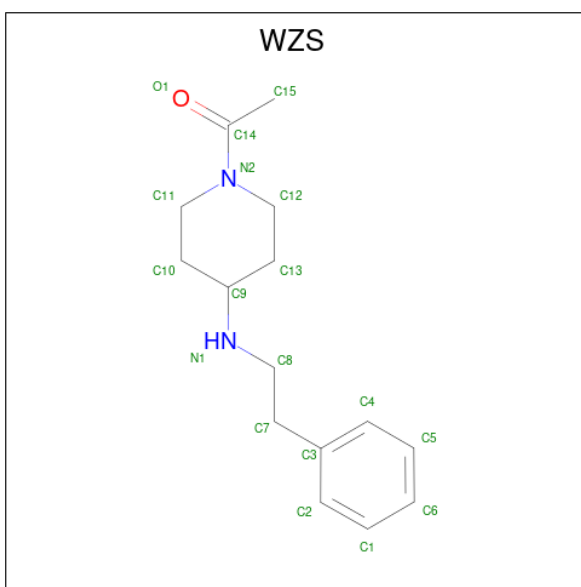
Mol	Chain	Residues	Atoms		ZeroOcc	AltConf
7	A	1	Total	Ca	0	0
			1	1		
7	B	1	Total	Ca	0	0
			1	1		
7	C	1	Total	Ca	0	0
			1	1		
7	E	1	Total	Ca	0	0
			1	1		

- Molecule 8 is GUANOSINE-5'-DIPHOSPHATE (three-letter code: GDP) (formula: C<sub>10</sub>H<sub>15</sub>N<sub>5</sub>O<sub>11</sub>P<sub>2</sub>).



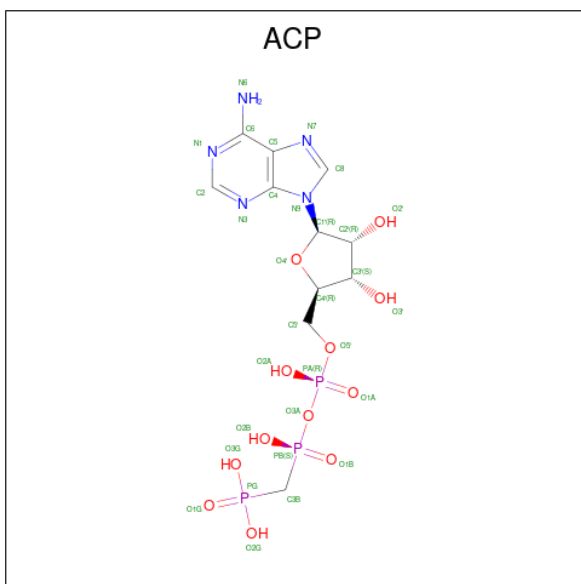
Mol	Chain	Residues	Atoms				ZeroOcc	AltConf
8	B	1	Total	C	N	O P	0	0
			28	10	5	11 2		
8	D	1	Total	C	N	O P	0	0
			28	10	5	11 2		

- Molecule 9 is 1-{4-[(2-phenylethyl)amino]piperidin-1-yl}ethan-1-one (three-letter code: WZS) (formula: C<sub>15</sub>H<sub>22</sub>N<sub>2</sub>O) (labeled as "Ligand of Interest" by depositor).



Mol	Chain	Residues	Atoms				ZeroOcc	AltConf
9	B	1	Total	C	H	N	O	
			40	15	22	2	1	
								0
								0

- Molecule 10 is PHOSPHOMETHYLPHOSPHONIC ACID ADENYLATE ESTER (three-letter code: ACP) (formula:  $C_{11}H_{18}N_5O_{12}P_3$ ).

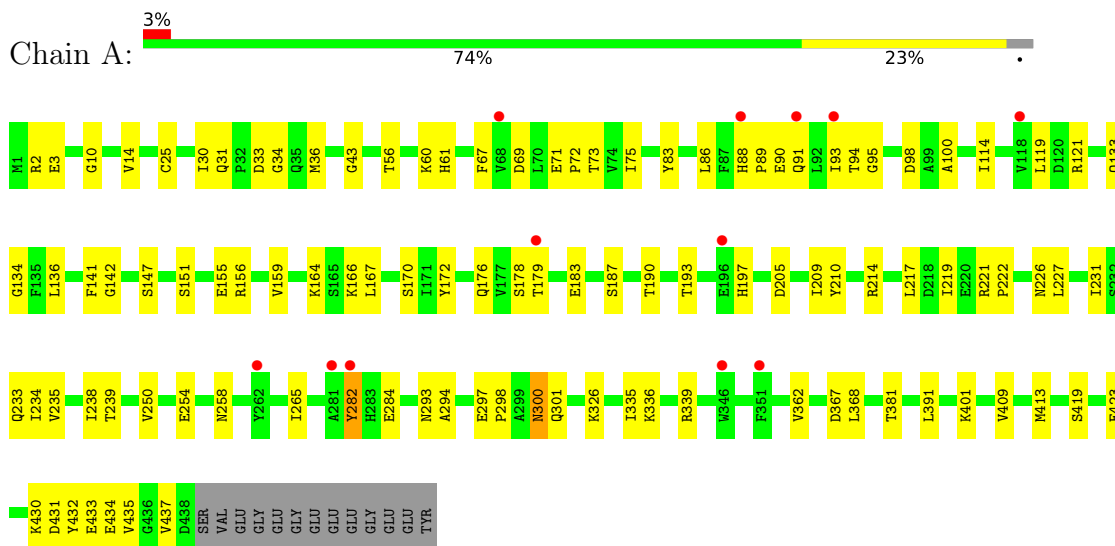


Mol	Chain	Residues	Atoms		ZeroOcc	AltConf
11	A	36	Total 36	O 36	0	0
11	B	45	Total 45	O 45	0	0
11	C	130	Total 130	O 130	0	0
11	D	17	Total 17	O 17	0	0
11	E	2	Total 2	O 2	0	0
11	F	2	Total 2	O 2	0	0

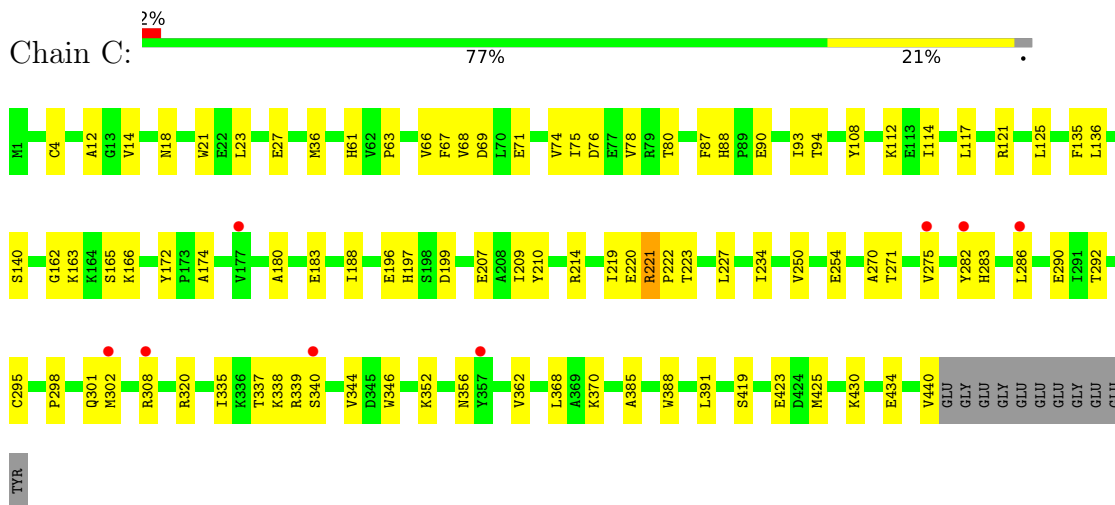
### 3 Residue-property plots

These plots are drawn for all protein, RNA, DNA and oligosaccharide chains in the entry. The first graphic for a chain summarises the proportions of the various outlier classes displayed in the second graphic. The second graphic shows the sequence view annotated by issues in geometry and electron density. Residues are color-coded according to the number of geometric quality criteria for which they contain at least one outlier: green = 0, yellow = 1, orange = 2 and red = 3 or more. A red dot above a residue indicates a poor fit to the electron density ( $RSRZ > 2$ ). Stretches of 2 or more consecutive residues without any outlier are shown as a green connector. Residues present in the sample, but not in the model, are shown in grey.

#### • Molecule 1: Tubulin alpha-1B chain

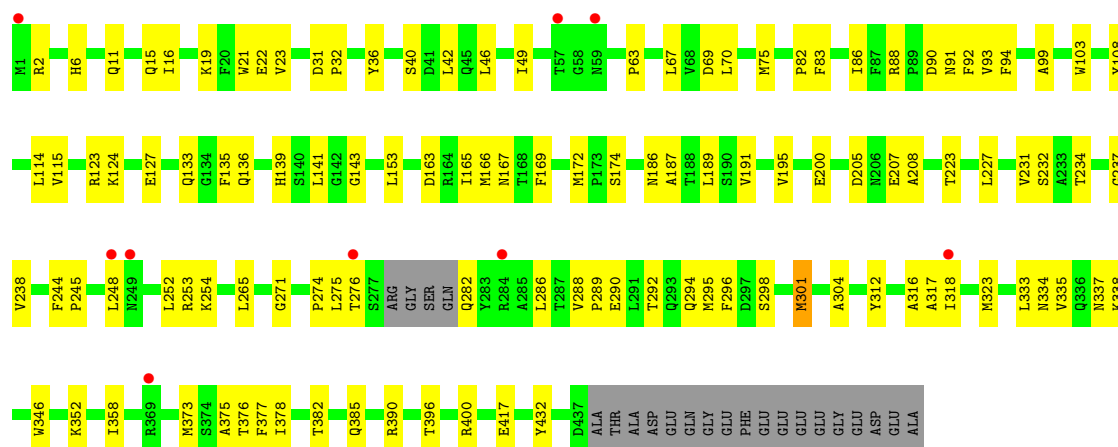


#### • Molecule 1: Tubulin alpha-1B chain

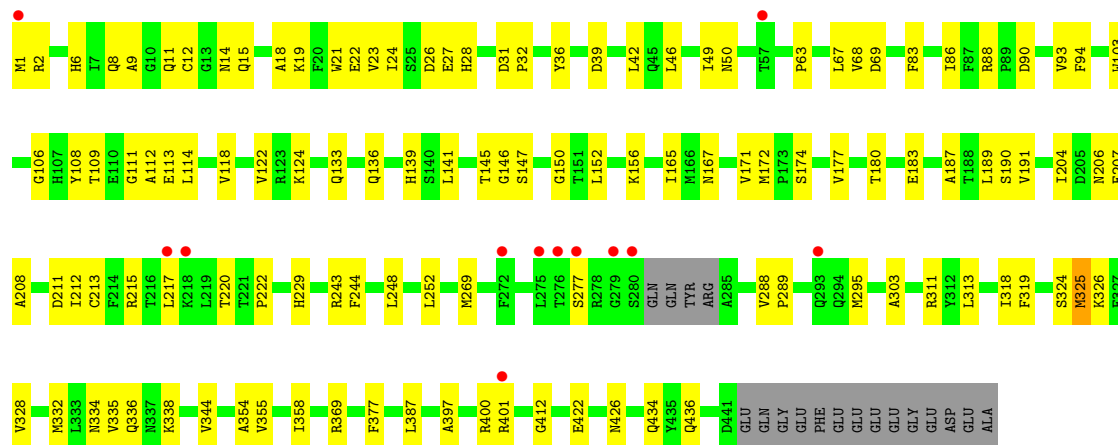


#### • Molecule 2: Tubulin beta-2B chain

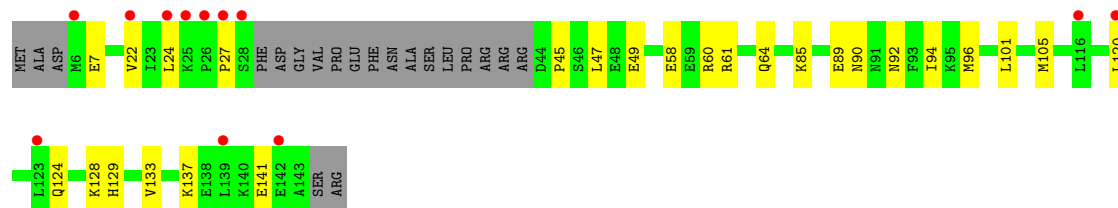




• Molecule 2: Tubulin beta-2B chain

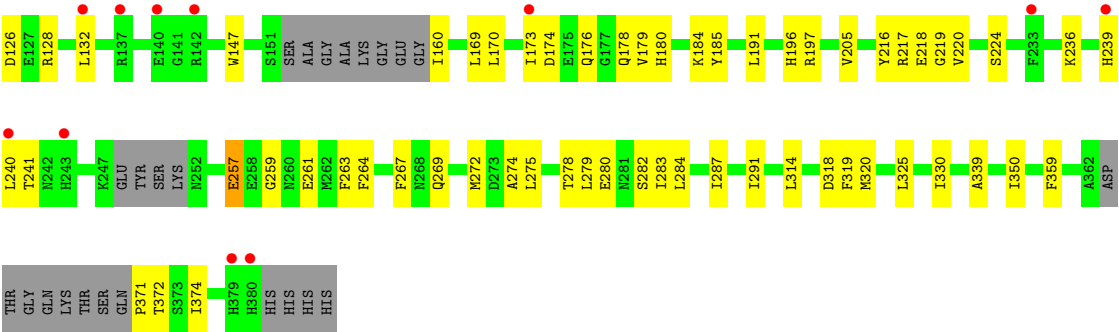


• Molecule 3: Stathmin-4



• Molecule 4: Tubulin-Tyrosine Ligase





## 4 Data and refinement statistics

Property	Value	Source
Space group	P 21 21 21	Depositor
Cell constants a, b, c, $\alpha$ , $\beta$ , $\gamma$	104.68Å 159.27Å 180.71Å 90.00° 90.00° 90.00°	Depositor
Resolution (Å)	63.38 – 2.45 119.49 – 2.45	Depositor EDS
% Data completeness (in resolution range)	99.8 (63.38-2.45) 99.8 (119.49-2.45)	Depositor EDS
$R_{merge}$	0.10	Depositor
$R_{sym}$	(Not available)	Depositor
$\langle I/\sigma(I) \rangle$ <sup>1</sup>	1.13 (at 2.45Å)	Xtriage
Refinement program	PHENIX 1.18.2_3874	Depositor
R, $R_{free}$	0.207 , 0.245 0.207 , 0.245	Depositor DCC
$R_{free}$ test set	5590 reflections (5.03%)	wwPDB-VP
Wilson B-factor (Å <sup>2</sup> )	72.2	Xtriage
Anisotropy	0.121	Xtriage
Bulk solvent $k_{sol}$ (e/Å <sup>3</sup> ), $B_{sol}$ (Å <sup>2</sup> )	0.30 , 55.2	EDS
L-test for twinning <sup>2</sup>	$\langle  L  \rangle = 0.52$ , $\langle L^2 \rangle = 0.35$	Xtriage
Estimated twinning fraction	No twinning to report.	Xtriage
$F_o, F_c$ correlation	0.95	EDS
Total number of atoms	17797	wwPDB-VP
Average B, all atoms (Å <sup>2</sup> )	89.0	wwPDB-VP

Xtriage's analysis on translational NCS is as follows: *The largest off-origin peak in the Patterson function is 2.42% of the height of the origin peak. No significant pseudotranslation is detected.*

<sup>1</sup>Intensities estimated from amplitudes.

<sup>2</sup>Theoretical values of  $\langle |L| \rangle$ ,  $\langle L^2 \rangle$  for acentric reflections are 0.5, 0.333 respectively for untwinned datasets, and 0.375, 0.2 for perfectly twinned datasets.

## 5 Model quality [i](#)

### 5.1 Standard geometry [i](#)

Bond lengths and bond angles in the following residue types are not validated in this section: GTP, MG, GDP, WZS, CA, ACP

The Z score for a bond length (or angle) is the number of standard deviations the observed value is removed from the expected value. A bond length (or angle) with  $|Z| > 5$  is considered an outlier worth inspection. RMSZ is the root-mean-square of all Z scores of the bond lengths (or angles).

Mol	Chain	Bond lengths		Bond angles	
		RMSZ	# Z  >5	RMSZ	# Z  >5
1	A	0.25	0/3502	0.41	0/4754
1	C	0.27	0/3521	0.43	0/4780
2	B	0.26	0/3413	0.42	0/4621
2	D	0.25	0/3421	0.41	0/4633
3	E	0.24	0/1022	0.36	0/1356
4	F	0.24	0/2860	0.39	0/3864
All	All	0.26	0/17739	0.41	0/24008

There are no bond length outliers.

There are no bond angle outliers.

There are no chirality outliers.

There are no planarity outliers.

### 5.2 Too-close contacts [i](#)

In the following table, the Non-H and H(model) columns list the number of non-hydrogen atoms and hydrogen atoms in the chain respectively. The H(added) column lists the number of hydrogen atoms added and optimized by MolProbity. The Clashes column lists the number of clashes within the asymmetric unit, whereas Symm-Clashes lists symmetry-related clashes.

Mol	Chain	Non-H	H(model)	H(added)	Clashes	Symm-Clashes
1	A	3424	0	3334	78	0
1	C	3443	0	3352	68	0
2	B	3339	0	3214	87	0
2	D	3348	0	3227	91	0
3	E	1014	0	1029	19	0
4	F	2797	0	2770	69	0
5	A	32	0	12	1	0

*Continued on next page...*

*Continued from previous page...*

Mol	Chain	Non-H	H(model)	H(added)	Clashes	Symm-Clashes
5	C	32	0	12	0	0
6	A	1	0	0	0	0
6	B	1	0	0	0	0
6	C	1	0	0	0	0
6	D	1	0	0	0	0
6	F	1	0	0	0	0
7	A	1	0	0	0	0
7	B	1	0	0	0	0
7	C	1	0	0	0	0
7	E	1	0	0	0	0
8	B	28	0	12	1	0
8	D	28	0	12	2	0
9	B	18	22	0	2	0
10	F	31	0	14	5	0
11	A	36	0	0	3	0
11	B	45	0	0	1	0
11	C	130	0	0	2	0
11	D	17	0	0	1	0
11	E	2	0	0	1	0
11	F	2	0	0	1	0
All	All	17775	22	16988	394	0

The all-atom clashscore is defined as the number of clashes found per 1000 atoms (including hydrogen atoms). The all-atom clashscore for this structure is 11.

All (394) close contacts within the same asymmetric unit are listed below, sorted by their clash magnitude.

Atom-1	Atom-2	Interatomic distance (Å)	Clash overlap (Å)
4:F:236:LYS:HB3	4:F:240:LEU:HD13	1.44	0.96
2:D:1:MET:HG3	2:D:50:ASN:HD22	1.32	0.95
2:D:217:LEU:HA	2:D:277:SER:HB3	1.49	0.94
1:C:221:ARG:HG3	2:D:325:MET:HG2	1.50	0.93
4:F:102:PRO:HG2	4:F:105:LEU:HD13	1.51	0.91
2:B:11:GLN:OE1	11:B:601:HOH:O	2.02	0.78
2:D:397:ALA:O	2:D:401:ARG:NH1	2.16	0.78
2:D:136:GLN:HA	2:D:167:ASN:O	1.84	0.77
1:A:178:SER:OG	1:A:183:GLU:OE1	2.01	0.76
4:F:318:ASP:OD2	10:F:401:ACP:O2G	2.03	0.76
4:F:280:GLU:HA	4:F:284:LEU:HB2	1.67	0.75
4:F:10:ASN:HB2	4:F:44:ARG:HH22	1.52	0.74
2:D:334:ASN:HD21	2:D:338:LYS:HE3	1.53	0.74

*Continued on next page...*

*Continued from previous page...*

Atom-1	Atom-2	Interatomic distance (Å)	Clash overlap (Å)
1:A:335:ILE:HG23	1:A:339:ARG:HG3	1.70	0.73
4:F:147:TRP:HB2	4:F:169:LEU:HD11	1.71	0.72
1:A:179:THR:HA	2:B:352:LYS:HD2	1.71	0.71
4:F:102:PRO:HG2	4:F:105:LEU:CD1	2.20	0.71
2:B:274:PRO:HB3	2:B:286:LEU:HD22	1.73	0.71
1:C:93:ILE:HG22	1:C:114:ILE:HD11	1.72	0.70
2:B:205:ASP:OD2	2:B:390:ARG:NH2	2.24	0.70
1:C:76:ASP:O	1:C:80:THR:HG22	1.93	0.69
4:F:197:ARG:NH1	4:F:257:GLU:OE2	2.24	0.68
2:D:187:ALA:O	2:D:191:VAL:HG23	1.95	0.68
2:D:83:PHE:O	2:D:86:ILE:HG22	1.93	0.67
2:B:292:THR:HG22	2:B:335:VAL:HG21	1.77	0.67
1:C:4[A]:CYS:SG	1:C:136:LEU:HG	2.35	0.67
2:D:11:GLN:O	2:D:15:GLN:HG2	1.95	0.67
2:B:337:ASN:OD1	4:F:36:ARG:HD3	1.94	0.67
4:F:314:LEU:HD22	4:F:350:ILE:HD11	1.79	0.65
2:B:83:PHE:O	2:B:86:ILE:HG22	1.96	0.65
1:A:335:ILE:HG23	1:A:339:ARG:CG	2.27	0.65
1:A:14:VAL:HG13	1:A:67:PHE:HD2	1.62	0.65
1:A:226:ASN:ND2	1:A:367:ASP:OD2	2.29	0.65
2:B:16:ILE:HD13	2:B:231:VAL:HG11	1.79	0.64
1:C:165:SER:HA	1:C:199:ASP:OD2	1.98	0.64
3:E:120:LEU:O	3:E:124:GLN:HG3	1.98	0.64
1:A:235:VAL:O	1:A:239:THR:HG23	1.98	0.64
1:A:214:ARG:HG2	1:A:219:ILE:O	1.97	0.63
1:C:320:ARG:HA	1:C:356:ASN:O	1.97	0.63
2:D:152:LEU:O	2:D:156:LYS:HG2	1.97	0.63
1:C:254:GLU:HG2	1:C:352:LYS:HE2	1.79	0.63
1:C:335:ILE:HG23	1:C:339:ARG:HG3	1.81	0.63
4:F:220:VAL:HG11	4:F:339:ALA:HB2	1.81	0.63
2:B:141:LEU:HD12	2:B:172:MET:SD	2.38	0.63
1:A:43:GLY:HA2	1:A:56:THR:O	1.99	0.62
4:F:241:THR:OG1	10:F:401:ACP:O3'	2.18	0.62
1:A:362:VAL:HG22	11:A:604:HOH:O	1.98	0.62
4:F:320:MET:HG3	4:F:330:ILE:HD11	1.81	0.62
1:A:88:HIS:CD2	1:A:91:GLN:HG3	2.33	0.62
1:A:210:TYR:CE1	1:A:222:PRO:HD2	2.35	0.61
2:B:21:TRP:CZ3	2:B:63:PRO:HB3	2.36	0.61
1:C:209:ILE:HD11	1:C:302:MET:CE	2.31	0.61
2:D:171:VAL:HA	2:D:204:ILE:O	2.01	0.61
2:B:69:ASP:O	2:B:94:PHE:HA	2.00	0.61

*Continued on next page...*

*Continued from previous page...*

Atom-1	Atom-2	Interatomic distance (Å)	Clash overlap (Å)
2:D:334:ASN:ND2	2:D:338:LYS:HE3	2.16	0.61
1:A:25:CYS:HB3	1:A:30:ILE:O	2.01	0.60
4:F:10:ASN:CB	4:F:44:ARG:HH22	2.14	0.60
1:A:187:SER:HB3	1:A:391:LEU:HD21	1.84	0.60
2:B:165:ILE:HG21	2:B:252:LEU:HB3	1.84	0.60
2:D:1:MET:HG3	2:D:50:ASN:ND2	2.10	0.60
4:F:205:VAL:HG21	4:F:291:ILE:HD13	1.84	0.60
2:B:67:LEU:HD22	2:B:92:PHE:CE2	2.36	0.60
1:C:286:LEU:HA	1:C:290:GLU:OE1	2.01	0.60
1:C:385:ALA:HA	1:C:388:TRP:CD1	2.37	0.60
2:D:397:ALA:HA	2:D:400:ARG:NH1	2.17	0.60
4:F:371:PRO:HA	4:F:372:THR:O	2.02	0.60
1:C:172:TYR:CE2	1:C:391:LEU:HD22	2.37	0.59
1:C:209:ILE:HD11	1:C:302:MET:HE3	1.84	0.59
4:F:2:TYR:CE1	4:F:359:PHE:HB3	2.37	0.59
4:F:219:GLY:HA3	4:F:264:PHE:CZ	2.38	0.59
1:A:36:MET:HB3	1:A:61:HIS:CE1	2.38	0.59
1:C:430:LYS:HE2	1:C:434:GLU:OE2	2.03	0.59
4:F:217:ARG:NH2	4:F:374:ILE:HG22	2.17	0.59
4:F:320:MET:CG	4:F:330:ILE:HD11	2.32	0.59
2:B:234:THR:O	2:B:238:VAL:HG13	2.03	0.59
1:A:297:GLU:HB2	1:A:300:ASN:HD21	1.68	0.58
1:A:433:GLU:HG3	1:A:437:VAL:HG21	1.85	0.58
2:B:295:MET:CG	2:B:377:PHE:HB2	2.33	0.58
4:F:96:GLU:OE2	4:F:98:TYR:OH	2.20	0.58
4:F:132:LEU:HD21	4:F:170:LEU:HD11	1.85	0.58
2:B:23:VAL:HG21	2:B:232:SER:HB3	1.85	0.58
2:B:274:PRO:HB3	2:B:286:LEU:CD2	2.34	0.58
2:D:141:LEU:HD12	2:D:172:MET:SD	2.44	0.57
4:F:371:PRO:CA	4:F:372:THR:HB	2.34	0.57
1:C:337:THR:O	1:C:338:LYS:HG3	2.05	0.57
1:A:93:ILE:HD11	1:A:121:ARG:HG3	1.86	0.57
1:A:166:LYS:HE2	1:A:197:HIS:O	2.04	0.57
1:C:162:GLY:HA2	3:E:94:ILE:HD11	1.87	0.57
2:D:147:SER:HB2	2:D:190:SER:OG	2.03	0.57
2:D:220:THR:C	2:D:222:PRO:HD3	2.25	0.57
2:B:2:ARG:HB2	2:B:133:GLN:CG	2.35	0.56
1:C:298:PRO:HG2	1:C:308:ARG:NH2	2.20	0.56
1:C:21:TRP:CZ3	1:C:63:PRO:HB3	2.41	0.56
2:B:223:THR:O	2:B:227:LEU:HD13	2.05	0.56
2:D:146:GLY:O	2:D:150:GLY:HA3	2.05	0.56

*Continued on next page...*

*Continued from previous page...*

Atom-1	Atom-2	Interatomic distance (Å)	Clash overlap (Å)
4:F:371:PRO:HA	4:F:372:THR:HB	1.87	0.56
2:D:2:ARG:HB2	2:D:133:GLN:HE21	1.70	0.56
1:A:69:ASP:O	1:A:94:THR:HA	2.05	0.56
2:B:205:ASP:OD1	2:B:207:GLU:N	2.34	0.56
2:D:21:TRP:CZ3	2:D:63:PRO:HB3	2.41	0.56
4:F:191:LEU:HD12	4:F:196:HIS:CE1	2.41	0.55
4:F:371:PRO:HA	4:F:372:THR:C	2.26	0.55
1:A:419:SER:O	1:A:423:GLU:HG3	2.07	0.55
4:F:278:THR:HB	11:F:501:HOH:O	2.05	0.55
2:B:143:GLY:HA3	8:B:501:GDP:O3A	2.07	0.55
1:A:431:ASP:O	1:A:435:VAL:HG23	2.07	0.55
2:D:1:MET:CE	2:D:50:ASN:HB2	2.36	0.55
2:B:167:ASN:OD1	2:B:200:GLU:HB2	2.07	0.55
4:F:269:GLN:HA	4:F:272:MET:HE2	1.88	0.55
1:A:71:GLU:OE2	1:A:73:THR:OG1	2.21	0.55
2:B:88:ARG:NH1	2:B:90:ASP:HB2	2.22	0.55
1:C:419:SER:O	1:C:423:GLU:HG3	2.07	0.55
2:D:109:THR:O	2:D:113:GLU:HG2	2.07	0.54
1:A:2:ARG:HB3	1:A:133:GLN:HG2	1.89	0.54
2:B:317:ALA:C	2:B:318:ILE:HD12	2.28	0.54
2:D:6:HIS:CD2	2:D:21:TRP:HE1	2.25	0.54
2:D:165:ILE:HG21	2:D:252:LEU:HB3	1.89	0.54
2:B:396:THR:O	2:B:400:ARG:HG2	2.08	0.54
1:C:63:PRO:HG2	1:C:87:PHE:CE1	2.42	0.54
2:D:180:THR:O	2:D:183:GLU:HG3	2.06	0.54
1:A:72:PRO:HD3	1:A:95:GLY:O	2.07	0.54
4:F:184:LYS:O	10:F:401:ACP:N6	2.40	0.54
2:D:2:ARG:HB3	2:D:133:GLN:CG	2.37	0.54
4:F:3:THR:HB	4:F:30:LEU:HD11	1.90	0.54
1:C:163:LYS:HG3	3:E:90:ASN:OD1	2.08	0.54
2:D:145:THR:HB	8:D:501:GDP:O2B	2.08	0.53
1:A:294:ALA:O	1:A:300:ASN:ND2	2.42	0.53
1:C:166:LYS:HE2	1:C:197:HIS:O	2.09	0.53
1:C:188:ILE:HG13	1:C:425:MET:HG3	1.90	0.53
1:A:300:ASN:HB3	11:A:601:HOH:O	2.08	0.53
1:A:336:LYS:HG3	3:E:24:LEU:HD13	1.89	0.53
2:D:325:MET:CE	2:D:355:VAL:HG21	2.37	0.53
1:A:136:LEU:CD2	1:A:167:LEU:HB2	2.38	0.53
2:B:244:PHE:HB3	2:B:245:PRO:HD2	1.90	0.53
2:D:213:CYS:HA	2:D:217:LEU:HB2	1.90	0.53
1:A:179:THR:O	2:B:352:LYS:HG3	2.08	0.53

*Continued on next page...*

*Continued from previous page...*

Atom-1	Atom-2	Interatomic distance (Å)	Clash overlap (Å)
2:B:334:ASN:HD21	2:B:338:LYS:HD2	1.72	0.53
2:B:135:PHE:HB2	2:B:166:MET:HE1	1.91	0.53
10:F:401:ACP:O3G	10:F:401:ACP:O1B	2.26	0.52
2:D:288:VAL:HB	2:D:289:PRO:HD3	1.90	0.52
2:B:333:LEU:HD13	4:F:57:GLY:HA3	1.92	0.52
1:A:233:GLN:HG3	1:A:368:LEU:CD1	2.40	0.52
2:B:296:PHE:CD2	2:B:335:VAL:HG11	2.45	0.52
2:B:124:LYS:HD3	2:B:124:LYS:C	2.30	0.52
2:B:135:PHE:HB2	2:B:166:MET:CE	2.40	0.52
1:C:362:VAL:HG22	1:C:370:LYS:HD3	1.93	0.51
1:A:136:LEU:HD22	1:A:167:LEU:HB2	1.92	0.51
2:D:23:VAL:O	2:D:27:GLU:HG3	2.10	0.51
2:D:325:MET:HE1	2:D:355:VAL:HG21	1.91	0.51
1:A:172:TYR:HB3	1:A:205:ASP:HA	1.91	0.51
3:E:101:LEU:O	3:E:105:MET:HG2	2.10	0.51
1:A:250:VAL:HG12	1:A:254:GLU:OE1	2.10	0.51
1:C:223:THR:O	1:C:227:LEU:HG	2.11	0.51
2:D:244:PHE:CD1	2:D:358:ILE:HD12	2.46	0.51
2:B:244:PHE:CE1	2:B:358:ILE:HD12	2.46	0.51
2:D:332:MET:O	2:D:336:GLN:HG3	2.11	0.51
2:B:136:GLN:HA	2:B:167:ASN:O	2.11	0.51
2:D:2:ARG:HB3	2:D:133:GLN:HG3	1.92	0.51
2:D:208:ALA:O	2:D:212:ILE:HG13	2.10	0.51
1:C:234:ILE:HG12	1:C:302:MET:HE2	1.91	0.51
1:C:344:VAL:HG21	1:C:346:TRP:CE2	2.46	0.51
3:E:128:LYS:O	3:E:128:LYS:HD3	2.10	0.51
1:A:34:GLY:HA3	1:A:60:LYS:HG3	1.93	0.50
2:B:70:LEU:HD12	2:B:99:ALA:HB2	1.93	0.50
2:D:36:TYR:CD2	2:D:46:LEU:HD11	2.46	0.50
1:A:98:ASP:HB2	5:A:501:GTP:O2G	2.11	0.50
1:A:179:THR:HG21	2:B:248:LEU:CB	2.41	0.50
4:F:236:LYS:HB3	4:F:240:LEU:CD1	2.30	0.50
2:D:69:ASP:O	2:D:94:PHE:HA	2.11	0.50
2:D:269:MET:HG3	2:D:303:ALA:HB3	1.93	0.49
2:B:40:SER:OG	2:B:42:LEU:HD13	2.12	0.49
2:B:42:LEU:H	2:B:42:LEU:HD12	1.76	0.49
2:B:123:ARG:O	2:B:127:GLU:HG3	2.12	0.49
3:E:45:PRO:HA	3:E:49:GLU:OE1	2.12	0.49
3:E:92:ASN:O	3:E:96:MET:HG2	2.11	0.49
4:F:128:ARG:NH2	4:F:174:ASP:OD1	2.45	0.49
2:B:382:THR:O	2:B:385:GLN:HG2	2.13	0.49

*Continued on next page...*

*Continued from previous page...*

Atom-1	Atom-2	Interatomic distance (Å)	Clash overlap (Å)
2:D:141:LEU:HA	2:D:147:SER:HB3	1.94	0.49
1:A:155:GLU:O	1:A:159:VAL:HG23	2.13	0.49
1:A:134:GLY:HA2	1:A:164:LYS:HB3	1.94	0.49
2:B:323:MET:HB3	2:B:373:MET:CE	2.43	0.49
2:D:177:VAL:HG21	2:D:206:ASN:HB3	1.95	0.49
4:F:197:ARG:HB2	4:F:224:SER:O	2.12	0.49
4:F:205:VAL:CG2	4:F:291:ILE:HD13	2.43	0.49
4:F:220:VAL:HG12	4:F:263:PHE:CE1	2.48	0.49
1:A:179:THR:HA	2:B:352:LYS:CD	2.41	0.48
1:A:187:SER:CB	1:A:391:LEU:HD21	2.42	0.48
1:C:298:PRO:HA	1:C:301:GLN:OE1	2.13	0.48
2:D:422:GLU:HG2	2:D:426:ASN:ND2	2.28	0.48
1:C:66:VAL:HG12	1:C:68:VAL:HG23	1.95	0.48
2:D:2:ARG:CB	2:D:133:GLN:HE21	2.26	0.48
2:D:324:SER:O	2:D:328:VAL:HG23	2.13	0.48
2:B:46:LEU:HA	2:B:49:ILE:HB	1.94	0.48
3:E:85:LYS:O	3:E:89:GLU:HG3	2.12	0.48
4:F:147:TRP:HB2	4:F:169:LEU:CD1	2.42	0.48
4:F:259:GLY:O	4:F:261:GLU:HG3	2.12	0.48
1:A:14:VAL:HG13	1:A:67:PHE:CD2	2.47	0.48
2:B:2:ARG:HB2	2:B:133:GLN:HG3	1.96	0.48
4:F:160:ILE:HD12	4:F:160:ILE:N	2.28	0.48
1:C:270:ALA:O	1:C:302:MET:HG2	2.14	0.48
2:D:295:MET:HE2	2:D:295:MET:HB2	1.66	0.48
4:F:282:SER:HB2	4:F:325:LEU:HD13	1.95	0.48
1:C:271:THR:HG21	1:C:295:CYS:O	2.13	0.48
4:F:176:GLN:HB3	4:F:178:GLN:NE2	2.28	0.48
1:C:108:TYR:O	1:C:112:LYS:HG2	2.14	0.47
2:B:237:GLY:HA3	2:B:376:THR:OG1	2.14	0.47
2:D:332:MET:O	2:D:335:VAL:HG12	2.14	0.47
2:D:26:ASP:OD2	2:D:369:ARG:HD2	2.14	0.47
2:D:248:LEU:HD23	2:D:354:ALA:HB2	1.95	0.47
1:A:231:ILE:O	1:A:235:VAL:HG23	2.15	0.47
1:C:66:VAL:HG23	1:C:125:LEU:HD12	1.97	0.47
4:F:216:TYR:CE2	4:F:218:GLU:HB2	2.50	0.47
1:A:142:GLY:HA3	1:A:183:GLU:OE2	2.14	0.47
1:A:336:LYS:HG3	3:E:24:LEU:CD1	2.45	0.47
2:B:174:SER:CB	2:B:207:GLU:HB2	2.45	0.47
2:B:208:ALA:HB2	2:B:304:ALA:HB2	1.97	0.47
2:D:1:MET:HG3	2:D:50:ASN:HB2	1.96	0.47
2:D:28:HIS:NE2	2:D:243:ARG:HD2	2.30	0.47

*Continued on next page...*

*Continued from previous page...*

Atom-1	Atom-2	Interatomic distance (Å)	Clash overlap (Å)
2:D:88:ARG:NH1	2:D:90:ASP:HB2	2.29	0.47
2:D:295:MET:CE	2:D:377:PHE:HB2	2.44	0.47
2:D:387:LEU:HD23	2:D:387:LEU:C	2.35	0.47
1:A:430:LYS:O	1:A:434:GLU:HG3	2.15	0.47
2:B:295:MET:SD	2:B:375:ALA:HB1	2.55	0.47
4:F:279:LEU:HD12	4:F:283:ILE:HB	1.97	0.47
1:C:282:TYR:O	1:C:283:HIS:HB2	2.15	0.47
2:D:21:TRP:CE3	2:D:63:PRO:HB3	2.49	0.47
4:F:100:ILE:CD1	4:F:128:ARG:HA	2.45	0.47
2:D:106:GLY:O	2:D:111:GLY:HA3	2.14	0.46
4:F:4:PHE:CZ	4:F:29:ARG:HB2	2.49	0.46
1:A:209:ILE:HG22	1:A:227:LEU:HD22	1.97	0.46
3:E:7:GLU:O	3:E:22:VAL:HA	2.14	0.46
3:E:85:LYS:NZ	11:E:301:HOH:O	2.47	0.46
1:A:234:ILE:O	1:A:238:ILE:HG13	2.14	0.46
2:B:265:LEU:HD22	2:B:432:TYR:CE1	2.50	0.46
2:B:334:ASN:ND2	2:B:338:LYS:HD2	2.29	0.46
2:B:21:TRP:CE3	2:B:63:PRO:HB3	2.51	0.46
1:C:174:ALA:HB2	1:C:207:GLU:N	2.31	0.46
1:C:254:GLU:HG2	1:C:352:LYS:CE	2.45	0.46
2:D:31:ASP:HB2	2:D:32:PRO:CD	2.45	0.46
4:F:269:GLN:HA	4:F:272:MET:CE	2.46	0.46
4:F:216:TYR:CZ	4:F:218:GLU:HB2	2.51	0.46
4:F:274:ALA:HB3	4:F:275:LEU:HD22	1.97	0.46
1:A:75:ILE:HD12	1:A:94:THR:HG22	1.98	0.46
2:B:290:GLU:O	2:B:294:GLN:HG3	2.16	0.46
1:C:234:ILE:HD12	1:C:234:ILE:N	2.31	0.46
2:D:1:MET:HE3	2:D:50:ASN:HB2	1.97	0.46
2:D:325:MET:HE1	2:D:355:VAL:CG2	2.46	0.46
2:D:412:GLY:C	3:E:133:VAL:HG13	2.36	0.46
1:C:308:ARG:HG2	1:C:340:SER:HB2	1.96	0.46
3:E:58:GLU:HA	3:E:61:ARG:NH2	2.30	0.45
1:A:151:SER:HB2	1:A:193:THR:OG1	2.16	0.45
1:A:227:LEU:O	1:A:231:ILE:HG13	2.16	0.45
2:D:311:ARG:NH1	2:D:436:GLN:O	2.49	0.45
2:D:422:GLU:HG2	2:D:426:ASN:HD21	1.81	0.45
2:B:93:VAL:HG12	2:B:114:LEU:HD11	1.99	0.45
2:B:166:MET:HE3	9:B:504:WZS:C5	2.46	0.45
1:C:14:VAL:HG13	1:C:67:PHE:HD2	1.81	0.45
2:D:318:ILE:N	2:D:318:ILE:HD12	2.32	0.45
1:A:234:ILE:HD12	1:A:234:ILE:N	2.32	0.45

*Continued on next page...*

*Continued from previous page...*

Atom-1	Atom-2	Interatomic distance (Å)	Clash overlap (Å)
4:F:126:ASP:OD2	4:F:128:ARG:HG3	2.16	0.45
1:C:214:ARG:HG2	1:C:219:ILE:O	2.16	0.45
2:D:103:TRP:CE3	2:D:189:LEU:HD13	2.52	0.45
2:D:295:MET:HE1	2:D:377:PHE:HB2	1.99	0.45
2:B:169:PHE:HE2	2:B:238:VAL:HG21	1.82	0.45
2:B:271:GLY:O	2:B:377:PHE:N	2.42	0.45
4:F:217:ARG:HG3	4:F:218:GLU:HG2	1.97	0.45
1:A:2:ARG:CB	1:A:133:GLN:HG2	2.47	0.45
2:B:36:TYR:CD1	2:B:46:LEU:HD21	2.51	0.45
2:B:103:TRP:CE3	2:B:189:LEU:HD13	2.51	0.45
2:B:298:SER:HA	2:B:301:MET:HG3	1.99	0.45
2:D:434:GLN:HB2	11:D:605:HOH:O	2.17	0.45
4:F:72:CYS:O	4:F:73:ARG:HD2	2.16	0.45
1:C:36:MET:HB3	1:C:61:HIS:CE1	2.52	0.45
4:F:185:TYR:OH	4:F:239:HIS:HB3	2.17	0.45
2:D:174:SER:OG	2:D:207:GLU:OE1	2.26	0.45
1:C:66:VAL:HG23	1:C:125:LEU:CD1	2.48	0.44
3:E:60:ARG:O	3:E:64:GLN:HG3	2.17	0.44
4:F:2:TYR:HB2	4:F:27:TRP:CD2	2.52	0.44
1:C:292:THR:HG22	1:C:335:ILE:CD1	2.47	0.44
4:F:267:PHE:CE2	4:F:279:LEU:HD13	2.52	0.44
1:C:174:ALA:HB1	1:C:207:GLU:HB2	2.00	0.44
1:A:114:ILE:HG12	1:A:114:ILE:O	2.18	0.44
1:C:93:ILE:CG2	1:C:114:ILE:HD11	2.45	0.44
1:C:93:ILE:HD11	1:C:121:ARG:HG3	1.99	0.44
2:D:67:LEU:N	2:D:67:LEU:HD12	2.32	0.44
1:A:293:ASN:HA	1:A:335:ILE:HD11	2.00	0.44
2:B:318:ILE:HD12	2:B:318:ILE:N	2.32	0.44
2:D:9:ALA:HA	2:D:68:VAL:O	2.17	0.44
2:D:18:ALA:O	2:D:22:GLU:HG3	2.18	0.44
2:D:319:PHE:HB2	2:D:355:VAL:HG22	2.00	0.44
4:F:2:TYR:CZ	4:F:359:PHE:HB3	2.53	0.44
4:F:14:TYR:HB3	4:F:41:LEU:HD13	1.99	0.44
2:B:274:PRO:O	2:B:275:LEU:HD23	2.18	0.44
1:C:135:PHE:O	1:C:136:LEU:HD23	2.18	0.44
1:A:88:HIS:HD2	1:A:90:GLU:HB2	1.82	0.44
2:B:166:MET:HE3	9:B:504:WZS:C6	2.48	0.44
2:B:288:VAL:HB	2:B:289:PRO:HD3	1.99	0.44
1:A:88:HIS:HB2	1:A:89:PRO:HD2	2.00	0.43
1:A:155:GLU:HG2	1:A:197:HIS:NE2	2.32	0.43
2:B:316:ALA:HB3	2:B:378:ILE:HB	1.99	0.43

*Continued on next page...*

*Continued from previous page...*

Atom-1	Atom-2	Interatomic distance (Å)	Clash overlap (Å)
2:D:108:TYR:O	2:D:112:ALA:HB3	2.19	0.43
1:A:100:ALA:HA	2:B:254:LYS:HG3	2.01	0.43
2:B:88:ARG:HD3	2:B:91:ASN:OD1	2.18	0.43
1:A:297:GLU:HA	1:A:297:GLU:OE1	2.18	0.43
2:B:6:HIS:CD2	2:B:21:TRP:HE1	2.35	0.43
2:D:118:VAL:O	2:D:122:VAL:HG23	2.19	0.43
1:A:265:ILE:HG23	1:A:432:TYR:CZ	2.53	0.43
2:B:244:PHE:CD1	2:B:358:ILE:HD12	2.53	0.43
3:E:129:HIS:O	3:E:133:VAL:HG23	2.19	0.43
4:F:185:TYR:HA	10:F:401:ACP:N1	2.33	0.43
1:A:3:GLU:OE1	1:A:3:GLU:N	2.52	0.43
2:B:19:LYS:HB3	2:B:232:SER:OG	2.18	0.43
1:C:174:ALA:CB	1:C:207:GLU:HB2	2.49	0.43
4:F:173:ILE:HD13	4:F:180:HIS:HB2	2.01	0.43
1:C:23:LEU:O	1:C:27:GLU:HG3	2.19	0.43
1:C:210:TYR:CZ	1:C:222:PRO:HD2	2.54	0.43
2:B:88:ARG:HH11	2:B:90:ASP:HB2	1.84	0.43
2:D:313:LEU:HD23	2:D:344:VAL:HG11	2.00	0.43
1:A:147:SER:HB2	1:A:190:THR:HB	2.01	0.42
2:D:114:LEU:HG	2:D:114:LEU:O	2.18	0.42
2:B:187:ALA:O	2:B:191:VAL:HG23	2.19	0.42
1:C:275:VAL:HG13	1:C:368:LEU:HD21	2.01	0.42
1:C:440:VAL:HG12	1:C:440:VAL:O	2.18	0.42
1:C:88:HIS:HE1	1:C:90:GLU:HG3	1.84	0.42
2:D:46:LEU:HA	2:D:49:ILE:HB	2.01	0.42
2:D:68:VAL:HA	2:D:93:VAL:O	2.19	0.42
2:D:211:ASP:O	2:D:215:ARG:HB2	2.19	0.42
2:D:19:LYS:O	2:D:23:VAL:HG23	2.20	0.42
2:D:42:LEU:HB2	2:D:358:ILE:HD11	2.00	0.42
1:A:75:ILE:HB	1:A:94:THR:CG2	2.49	0.42
2:B:31:ASP:HB2	2:B:32:PRO:CD	2.49	0.42
1:C:196:GLU:HG2	11:C:640:HOH:O	2.19	0.42
1:A:298:PRO:HA	1:A:301:GLN:CD	2.39	0.42
1:C:74:VAL:HB	11:C:620:HOH:O	2.19	0.42
2:D:21:TRP:CE3	2:D:24:ILE:HD11	2.54	0.42
2:D:217:LEU:CA	2:D:277:SER:HB3	2.32	0.42
4:F:240:LEU:HD12	4:F:240:LEU:N	2.35	0.42
1:A:254:GLU:HG2	1:A:258:ASN:ND2	2.34	0.42
2:B:108:TYR:OH	2:B:417:GLU:OE2	2.24	0.42
4:F:287:ILE:HG23	4:F:319:PHE:CZ	2.54	0.42
2:B:115:VAL:HG23	2:B:153:LEU:CD2	2.50	0.42

*Continued on next page...*

*Continued from previous page...*

Atom-1	Atom-2	Interatomic distance (Å)	Clash overlap (Å)
1:C:221:ARG:CG	2:D:325:MET:HG2	2.36	0.42
4:F:19:ARG:HD2	4:F:19:ARG:C	2.40	0.42
2:B:11:GLN:O	2:B:15:GLN:HG3	2.19	0.42
2:B:312:TYR:CE1	2:B:377:PHE:HZ	2.38	0.42
1:C:117:LEU:HD11	1:C:121:ARG:NH2	2.34	0.42
1:A:83:TYR:HB3	1:A:86:LEU:HD12	2.02	0.42
2:B:103:TRP:HB2	2:B:186:ASN:OD1	2.19	0.42
1:A:10:GLY:O	1:A:14:VAL:HG23	2.20	0.41
1:C:292:THR:HG22	1:C:335:ILE:HD12	2.01	0.41
2:D:109:THR:HG21	3:E:137:LYS:NZ	2.35	0.41
4:F:3:THR:HA	4:F:28:LYS:O	2.19	0.41
4:F:102:PRO:HD2	4:F:105:LEU:HD22	2.02	0.41
1:A:119:LEU:HD12	1:A:156:ARG:NH2	2.35	0.41
2:B:163:ASP:O	2:B:253[A]:ARG:NH2	2.52	0.41
1:C:250:VAL:HG11	1:C:352:LYS:HE3	2.02	0.41
1:A:31:GLN:HB2	1:A:33:ASP:OD1	2.20	0.41
1:A:217:LEU:HD21	1:A:368:LEU:HD23	2.02	0.41
1:A:409:VAL:HA	1:A:413:MET:O	2.20	0.41
2:B:32:PRO:HA	2:B:83:PHE:CD2	2.55	0.41
1:A:75:ILE:HB	1:A:94:THR:HG21	2.02	0.41
1:C:12:ALA:HB3	1:C:140:SER:HB3	2.01	0.41
1:A:176:GLN:HG3	4:F:56:PRO:HG3	2.01	0.41
2:D:8:GLN:NE2	2:D:14:ASN:HA	2.36	0.41
1:C:18:ASN:OD1	1:C:78:VAL:HG22	2.21	0.41
1:C:221:ARG:HG3	2:D:325:MET:CG	2.36	0.41
2:D:31:ASP:HB2	2:D:32:PRO:HD2	2.03	0.41
4:F:101:TYR:CD2	4:F:179:VAL:HG22	2.56	0.41
1:A:401:LYS:HG3	2:B:346:TRP:CE3	2.55	0.41
1:C:69:ASP:O	1:C:94:THR:HA	2.20	0.41
1:A:265:ILE:HG22	11:A:617:HOH:O	2.20	0.41
2:B:115:VAL:HG23	2:B:153:LEU:HD23	2.02	0.41
2:D:172:MET:HG3	2:D:387:LEU:HD11	2.03	0.41
4:F:101:TYR:HD2	4:F:105:LEU:HD23	1.86	0.41
4:F:103:THR:HG23	4:F:128:ARG:NH2	2.35	0.41
1:A:326:LYS:HE2	1:A:326:LYS:HB3	1.89	0.41
1:C:234:ILE:HD12	1:C:234:ILE:H	1.86	0.41
2:D:12:CYS:HB2	8:D:501:GDP:C8	2.56	0.41
1:C:220:GLU:OE1	2:D:326:LYS:HD3	2.21	0.40
2:D:1:MET:HG3	2:D:50:ASN:CB	2.52	0.40
2:B:75:MET:HE3	2:B:92:PHE:CD2	2.57	0.40
3:E:47:LEU:HD12	3:E:47:LEU:O	2.21	0.40

*Continued on next page...*

Continued from previous page...

Atom-1	Atom-2	Interatomic distance (Å)	Clash overlap (Å)
2:B:276:THR:HG21	2:B:282:GLN:HA	2.03	0.40
3:E:137:LYS:HE2	3:E:141:GLU:OE2	2.21	0.40
4:F:176:GLN:HB3	4:F:178:GLN:HE22	1.86	0.40
4:F:372:THR:O	4:F:372:THR:HG22	2.22	0.40
1:A:141:PHE:CE1	1:A:170:SER:HB3	2.57	0.40
2:B:191:VAL:O	2:B:195:VAL:HG23	2.21	0.40
1:C:180:ALA:O	1:C:183:GLU:HG3	2.21	0.40
1:C:234:ILE:HG12	1:C:302:MET:CE	2.52	0.40
2:B:22:GLU:HG3	2:B:83:PHE:CE1	2.56	0.40
2:B:67:LEU:HD12	2:B:67:LEU:N	2.37	0.40
1:C:75:ILE:HD12	1:C:94:THR:HG22	2.01	0.40
2:D:124:LYS:C	2:D:124:LYS:HD3	2.42	0.40

There are no symmetry-related clashes.

## 5.3 Torsion angles

### 5.3.1 Protein backbone

In the following table, the Percentiles column shows the percent Ramachandran outliers of the chain as a percentile score with respect to all X-ray entries followed by that with respect to entries of similar resolution.

The Analysed column shows the number of residues for which the backbone conformation was analysed, and the total number of residues.

Mol	Chain	Analysed	Favoured	Allowed	Outliers	Percentiles	
1	A	436/451 (97%)	418 (96%)	17 (4%)	1 (0%)	47	57
1	C	439/451 (97%)	426 (97%)	13 (3%)	0	100	100
2	B	420/445 (94%)	409 (97%)	10 (2%)	1 (0%)	47	57
2	D	423/445 (95%)	409 (97%)	14 (3%)	0	100	100
3	E	119/143 (83%)	118 (99%)	0	1 (1%)	19	22
4	F	331/384 (86%)	316 (96%)	15 (4%)	0	100	100
All	All	2168/2319 (94%)	2096 (97%)	69 (3%)	3 (0%)	51	64

All (3) Ramachandran outliers are listed below:

Mol	Chain	Res	Type
2	B	82	PRO

Continued on next page...

*Continued from previous page...*

Mol	Chain	Res	Type
1	A	282	TYR
3	E	27	PRO

### 5.3.2 Protein sidechains ⓘ

In the following table, the Percentiles column shows the percent sidechain outliers of the chain as a percentile score with respect to all X-ray entries followed by that with respect to entries of similar resolution.

The Analysed column shows the number of residues for which the sidechain conformation was analysed, and the total number of residues.

Mol	Chain	Analysed	Rotameric	Outliers	Percentiles	
1	A	369/379 (97%)	364 (99%)	5 (1%)	67	77
1	C	372/379 (98%)	370 (100%)	2 (0%)	88	93
2	B	366/383 (96%)	364 (100%)	2 (0%)	88	93
2	D	368/383 (96%)	364 (99%)	4 (1%)	73	82
3	E	110/127 (87%)	110 (100%)	0	100	100
4	F	308/342 (90%)	306 (99%)	2 (1%)	86	91
All	All	1893/1993 (95%)	1878 (99%)	15 (1%)	81	88

All (15) residues with a non-rotameric sidechain are listed below:

Mol	Chain	Res	Type
1	A	221	ARG
1	A	282	TYR
1	A	284	GLU
1	A	300	ASN
1	A	381	THR
2	B	139	HIS
2	B	301	MET
1	C	71	GLU
1	C	221	ARG
2	D	39	ASP
2	D	139	HIS
2	D	229	HIS
2	D	325	MET
4	F	73	ARG
4	F	257	GLU

Sometimes sidechains can be flipped to improve hydrogen bonding and reduce clashes. All (9) such sidechains are listed below:

Mol	Chain	Res	Type
1	A	88	HIS
1	A	300	ASN
1	A	301	GLN
2	B	282	GLN
2	B	334	ASN
1	C	107	HIS
1	C	300	ASN
2	D	50	ASN
4	F	333	ASN

### 5.3.3 RNA [i](#)

There are no RNA molecules in this entry.

## 5.4 Non-standard residues in protein, DNA, RNA chains [i](#)

There are no non-standard protein/DNA/RNA residues in this entry.

## 5.5 Carbohydrates [i](#)

There are no monosaccharides in this entry.

## 5.6 Ligand geometry [i](#)

Of 15 ligands modelled in this entry, 9 are monoatomic - leaving 6 for Mogul analysis.

In the following table, the Counts columns list the number of bonds (or angles) for which Mogul statistics could be retrieved, the number of bonds (or angles) that are observed in the model and the number of bonds (or angles) that are defined in the Chemical Component Dictionary. The Link column lists molecule types, if any, to which the group is linked. The Z score for a bond length (or angle) is the number of standard deviations the observed value is removed from the expected value. A bond length (or angle) with  $|Z| > 2$  is considered an outlier worth inspection. RMSZ is the root-mean-square of all Z scores of the bond lengths (or angles).

Mol	Type	Chain	Res	Link	Bond lengths			Bond angles		
					Counts	RMSZ	$\# Z  > 2$	Counts	RMSZ	$\# Z  > 2$
9	WZS	B	504	-	19,19,19	0.27	0	23,24,24	0.86	2 (8%)
5	GTP	C	501	6	26,34,34	0.95	1 (3%)	33,54,54	1.70	6 (18%)

Mol	Type	Chain	Res	Link	Bond lengths			Bond angles		
					Counts	RMSZ	# Z  > 2	Counts	RMSZ	# Z  > 2
8	GDP	D	501	6	24,30,30	1.17	2 (8%)	31,47,47	1.97	8 (25%)
8	GDP	B	501	6	24,30,30	1.13	2 (8%)	31,47,47	1.91	7 (22%)
5	GTP	A	501	6	26,34,34	1.01	1 (3%)	33,54,54	1.72	6 (18%)
10	ACP	F	401	6	27,33,33	1.40	5 (18%)	32,52,52	1.45	4 (12%)

In the following table, the Chirals column lists the number of chiral outliers, the number of chiral centers analysed, the number of these observed in the model and the number defined in the Chemical Component Dictionary. Similar counts are reported in the Torsion and Rings columns. '-' means no outliers of that kind were identified.

Mol	Type	Chain	Res	Link	Chirals	Torsions	Rings
9	WZS	B	504	-	-	1/10/20/20	0/2/2/2
5	GTP	C	501	6	-	8/18/38/38	0/3/3/3
8	GDP	D	501	6	-	2/12/32/32	0/3/3/3
8	GDP	B	501	6	-	3/12/32/32	0/3/3/3
5	GTP	A	501	6	-	4/18/38/38	0/3/3/3
10	ACP	F	401	6	-	9/15/38/38	0/3/3/3

All (11) bond length outliers are listed below:

Mol	Chain	Res	Type	Atoms	Z	Observed(Å)	Ideal(Å)
8	D	501	GDP	C6-C5	4.13	1.48	1.41
8	B	501	GDP	C6-C5	3.92	1.48	1.41
5	A	501	GTP	C6-N1	3.18	1.38	1.33
10	F	401	ACP	PB-O3A	2.97	1.61	1.58
10	F	401	ACP	PG-O2G	2.94	1.61	1.54
10	F	401	ACP	PG-O3G	2.89	1.61	1.54
5	C	501	GTP	C6-N1	2.79	1.37	1.33
10	F	401	ACP	C5-C4	2.52	1.47	1.40
8	D	501	GDP	C5-C4	2.40	1.47	1.40
8	B	501	GDP	C5-C4	2.23	1.46	1.40
10	F	401	ACP	PB-O2B	2.22	1.61	1.56

All (33) bond angle outliers are listed below:

Mol	Chain	Res	Type	Atoms	Z	Observed(°)	Ideal(°)
5	A	501	GTP	N3-C2-N1	-5.38	120.04	127.22
5	C	501	GTP	N3-C2-N1	-5.24	120.23	127.22
8	B	501	GDP	C2-N3-C4	5.02	121.09	115.36
8	D	501	GDP	C2-N3-C4	4.78	120.81	115.36

*Continued on next page...*

*Continued from previous page...*

Mol	Chain	Res	Type	Atoms	Z	Observed(°)	Ideal(°)
5	A	501	GTP	C2-N3-C4	4.20	120.16	115.36
8	B	501	GDP	C6-C5-C4	-4.16	116.83	120.80
8	D	501	GDP	C6-N1-C2	4.12	122.48	115.93
8	D	501	GDP	C5-C6-N1	-4.07	117.86	123.43
8	B	501	GDP	C6-N1-C2	3.93	122.17	115.93
5	C	501	GTP	C2-N3-C4	3.80	119.70	115.36
8	D	501	GDP	C6-C5-C4	-3.79	117.18	120.80
10	F	401	ACP	PA-O3A-PB	-3.74	120.71	132.56
8	B	501	GDP	C5-C6-N1	-3.70	118.37	123.43
8	B	501	GDP	N3-C2-N1	-3.57	122.46	127.22
10	F	401	ACP	C3'-C2'-C1'	3.46	106.19	100.98
8	D	501	GDP	N3-C2-N1	-3.35	122.75	127.22
8	D	501	GDP	PA-O3A-PB	-3.18	121.90	132.83
10	F	401	ACP	N3-C2-N1	-3.16	123.74	128.68
5	C	501	GTP	C5-C6-N1	-3.13	119.16	123.43
8	D	501	GDP	C4-C5-N7	-3.01	106.27	109.40
5	A	501	GTP	C5-C6-N1	-2.98	119.35	123.43
8	B	501	GDP	C4-C5-N7	-2.83	106.44	109.40
5	C	501	GTP	PB-O3B-PG	-2.72	123.51	132.83
5	A	501	GTP	PA-O3A-PB	-2.71	123.52	132.83
5	C	501	GTP	C6-N1-C2	2.71	120.24	115.93
5	C	501	GTP	PA-O3A-PB	-2.70	123.55	132.83
5	A	501	GTP	C6-N1-C2	2.66	120.15	115.93
10	F	401	ACP	C4-C5-N7	-2.47	106.82	109.40
5	A	501	GTP	PB-O3B-PG	-2.41	124.55	132.83
8	D	501	GDP	C3'-C2'-C1'	2.36	104.53	100.98
8	B	501	GDP	PA-O3A-PB	-2.35	124.77	132.83
9	B	504	WZS	C8-N1-C9	2.21	118.47	114.14
9	B	504	WZS	C10-C11-N2	-2.01	107.77	110.82

There are no chirality outliers.

All (27) torsion outliers are listed below:

Mol	Chain	Res	Type	Atoms
5	A	501	GTP	PB-O3B-PG-O2G
5	A	501	GTP	C5'-O5'-PA-O1A
5	A	501	GTP	C5'-O5'-PA-O2A
5	C	501	GTP	C5'-O5'-PA-O1A
5	C	501	GTP	C5'-O5'-PA-O2A
8	B	501	GDP	C5'-O5'-PA-O1A
8	B	501	GDP	C5'-O5'-PA-O2A
8	D	501	GDP	C5'-O5'-PA-O3A

*Continued on next page...*

*Continued from previous page...*

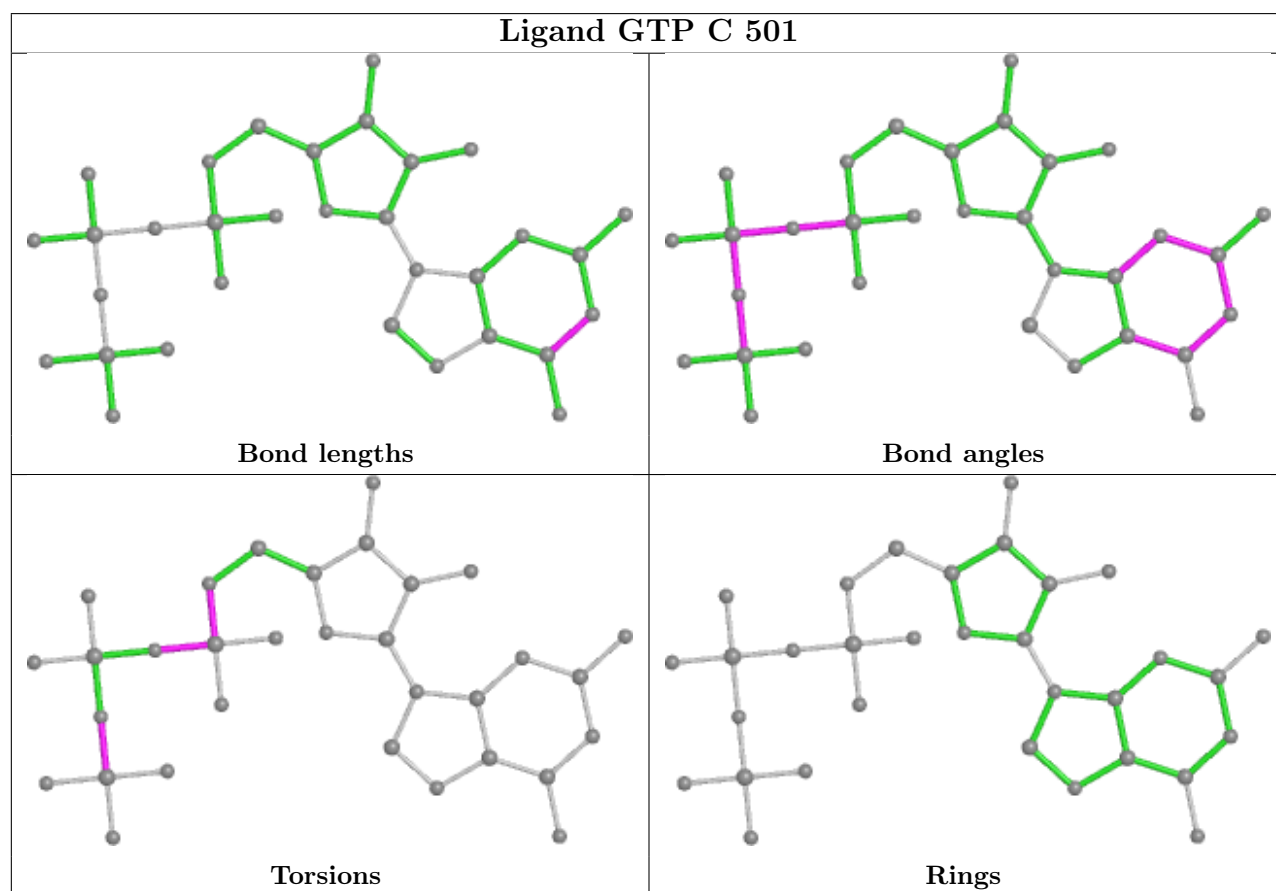
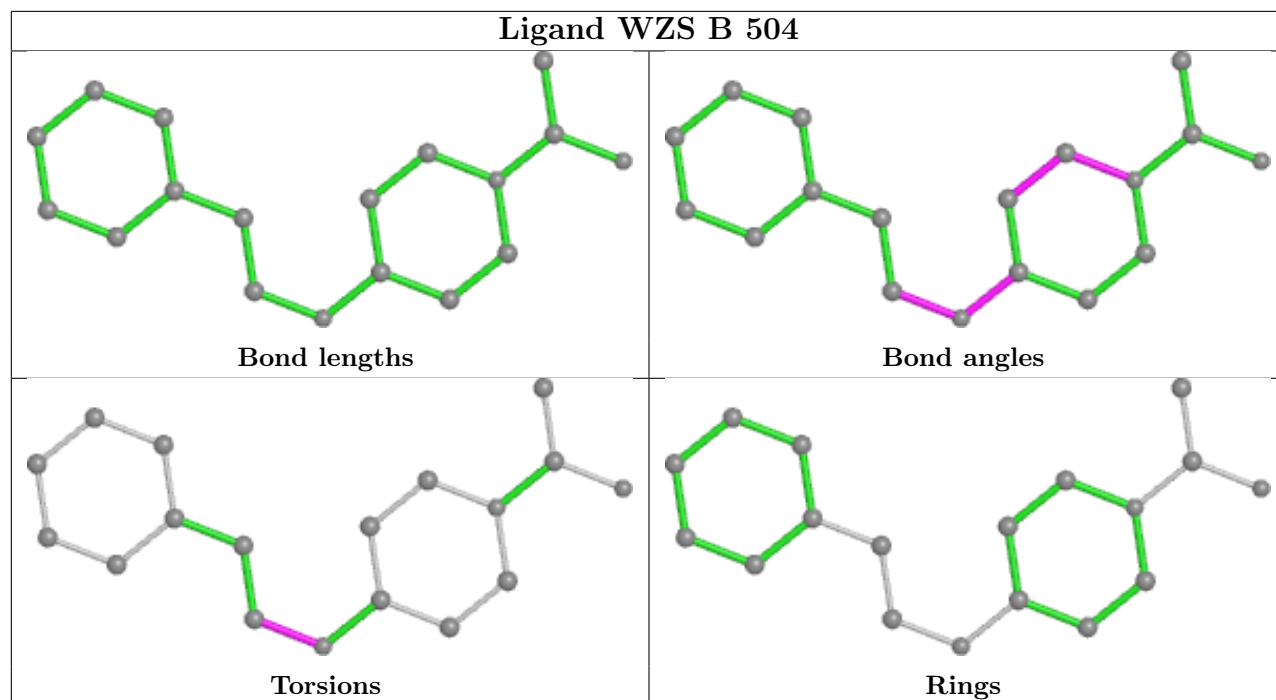
Mol	Chain	Res	Type	Atoms
8	D	501	GDP	C5'-O5'-PA-O2A
10	F	401	ACP	PB-C3B-PG-O1G
10	F	401	ACP	PB-C3B-PG-O2G
10	F	401	ACP	PB-C3B-PG-O3G
10	F	401	ACP	PG-C3B-PB-O1B
10	F	401	ACP	PG-C3B-PB-O2B
10	F	401	ACP	PG-C3B-PB-O3A
10	F	401	ACP	C5'-O5'-PA-O2A
10	F	401	ACP	C5'-O5'-PA-O3A
5	C	501	GTP	PB-O3B-PG-O1G
9	B	504	WZS	C7-C8-N1-C9
5	C	501	GTP	PB-O3A-PA-O2A
10	F	401	ACP	PB-O3A-PA-O2A
5	C	501	GTP	PB-O3B-PG-O2G
5	C	501	GTP	PB-O3B-PG-O3G
5	A	501	GTP	C5'-O5'-PA-O3A
5	C	501	GTP	C5'-O5'-PA-O3A
8	B	501	GDP	C5'-O5'-PA-O3A
5	C	501	GTP	PB-O3A-PA-O1A

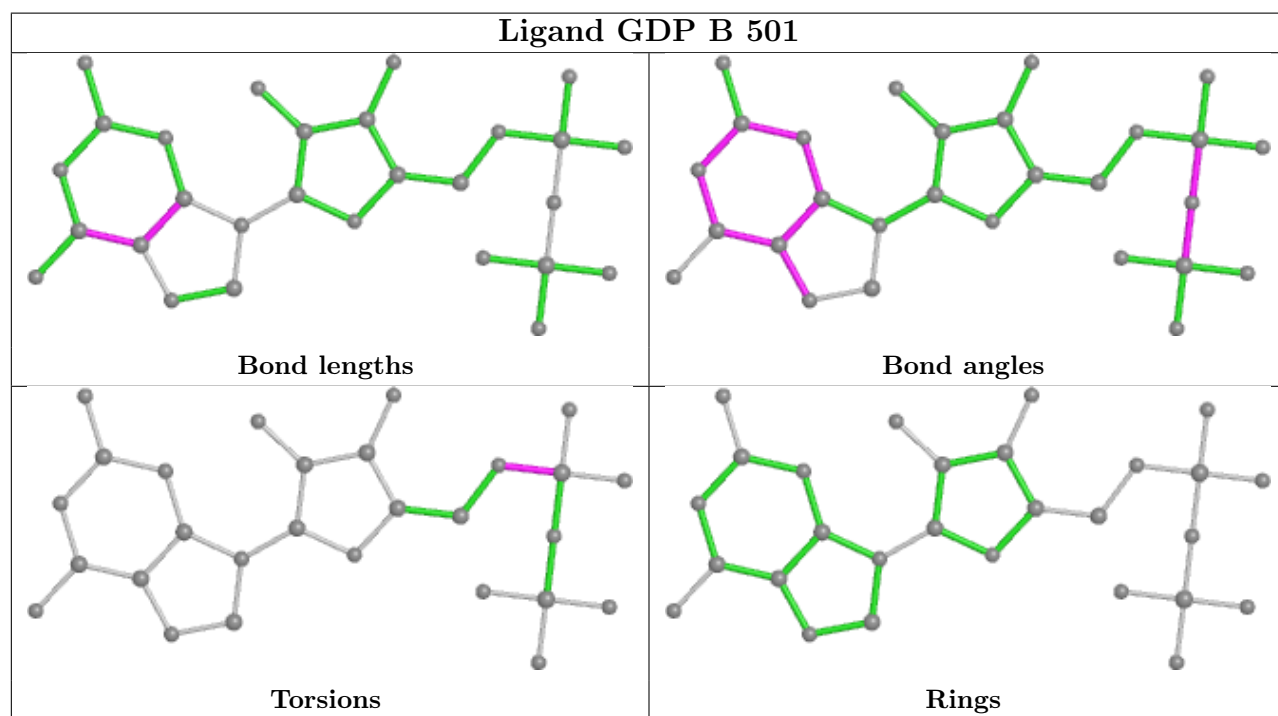
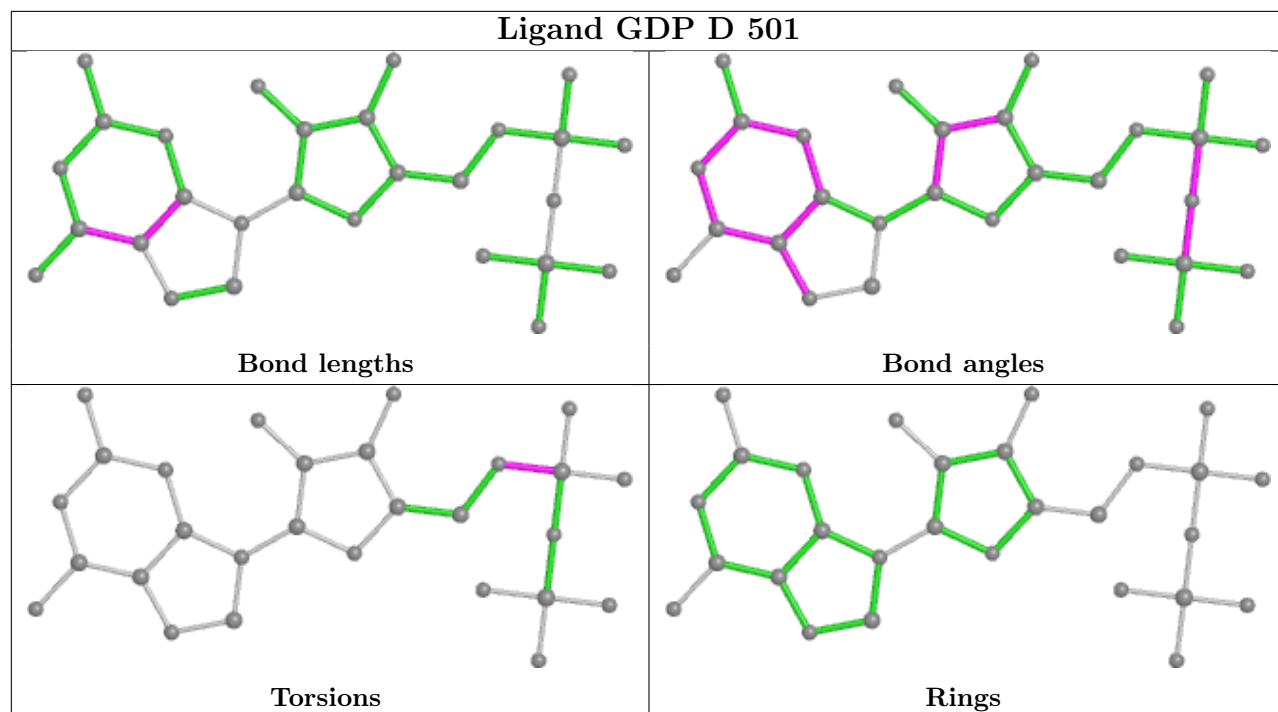
There are no ring outliers.

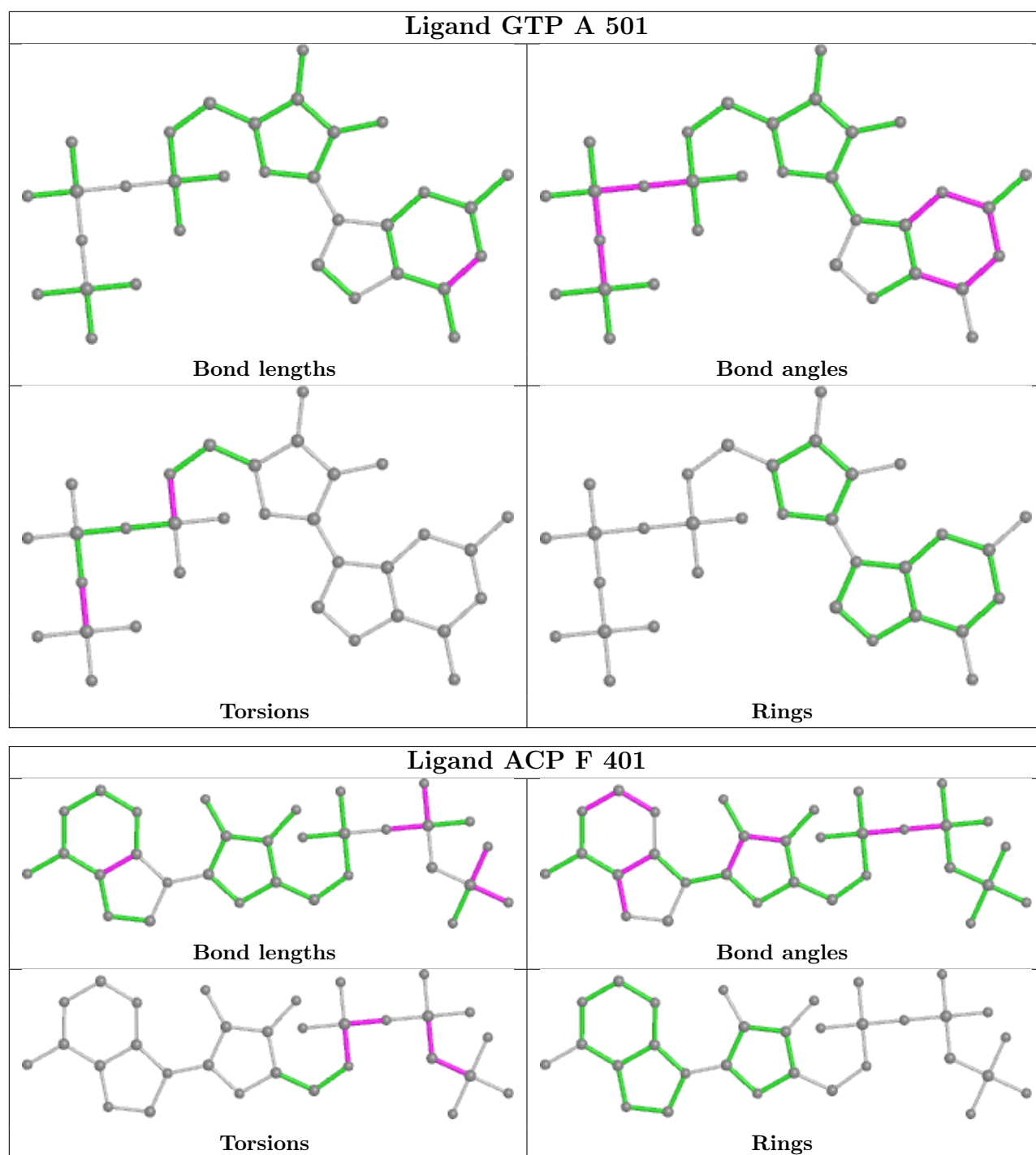
5 monomers are involved in 11 short contacts:

Mol	Chain	Res	Type	Clashes	Symm-Clashes
9	B	504	WZS	2	0
8	D	501	GDP	2	0
8	B	501	GDP	1	0
5	A	501	GTP	1	0
10	F	401	ACP	5	0

The following is a two-dimensional graphical depiction of Mogul quality analysis of bond lengths, bond angles, torsion angles, and ring geometry for all instances of the Ligand of Interest. In addition, ligands with molecular weight > 250 and outliers as shown on the validation Tables will also be included. For torsion angles, if less than 5% of the Mogul distribution of torsion angles is within 10 degrees of the torsion angle in question, then that torsion angle is considered an outlier. Any bond that is central to one or more torsion angles identified as an outlier by Mogul will be highlighted in the graph. For rings, the root-mean-square deviation (RMSD) between the ring in question and similar rings identified by Mogul is calculated over all ring torsion angles. If the average RMSD is greater than 60 degrees and the minimal RMSD between the ring in question and any Mogul-identified rings is also greater than 60 degrees, then that ring is considered an outlier. The outliers are highlighted in purple. The color gray indicates Mogul did not find sufficient equivalents in the CSD to analyse the geometry.







## 5.7 Other polymers [i](#)

There are no such residues in this entry.

## 5.8 Polymer linkage issues [i](#)

There are no chain breaks in this entry.

## 6 Fit of model and data ⓘ

### 6.1 Protein, DNA and RNA chains ⓘ

In the following table, the column labelled ‘#RSRZ > 2’ contains the number (and percentage) of RSRZ outliers, followed by percent RSRZ outliers for the chain as percentile scores relative to all X-ray entries and entries of similar resolution. The OWAB column contains the minimum, median, 95<sup>th</sup> percentile and maximum values of the occupancy-weighted average B-factor per residue. The column labelled ‘Q < 0.9’ lists the number of (and percentage) of residues with an average occupancy less than 0.9.

Mol	Chain	Analysed	<RSRZ>	#RSRZ>2	OWAB(Å <sup>2</sup> )	Q<0.9
1	A	438/451 (97%)	0.35	12 (2%) 54 50	62, 85, 130, 175	0
1	C	440/451 (97%)	0.30	8 (1%) 68 65	52, 66, 99, 131	0
2	B	423/445 (95%)	0.34	9 (2%) 63 60	55, 78, 122, 175	2 (0%)
2	D	427/445 (95%)	0.30	12 (2%) 53 49	62, 88, 123, 180	4 (0%)
3	E	123/143 (86%)	0.63	12 (9%) 7 5	63, 94, 131, 162	0
4	F	341/384 (88%)	0.17	12 (3%) 44 40	73, 110, 176, 214	0
All	All	2192/2319 (94%)	0.31	65 (2%) 50 46	52, 84, 141, 214	6 (0%)

All (65) RSRZ outliers are listed below:

Mol	Chain	Res	Type	RSRZ
2	D	276	THR	11.2
2	D	277	SER	5.7
4	F	240	LEU	5.7
2	D	1	MET	5.2
2	D	280	SER	5.1
2	B	1	MET	5.1
3	E	27	PRO	4.9
3	E	120	LEU	4.9
1	A	179	THR	4.7
2	D	57	THR	4.4
1	C	340	SER	4.0
2	B	284	ARG	3.6
2	B	249	ASN	3.5
1	C	357	TYR	3.5
3	E	26	PRO	3.4
1	C	282	TYR	3.4
3	E	139	LEU	3.4
3	E	6	MET	3.3
4	F	173	ILE	3.3

*Continued on next page...*

*Continued from previous page...*

Mol	Chain	Res	Type	RSRZ
1	A	282	TYR	3.3
4	F	137	ARG	3.3
2	B	276	THR	3.2
2	D	279	GLY	3.2
4	F	233	PHE	3.2
4	F	142	ARG	3.1
3	E	25	LYS	3.1
3	E	123	LEU	3.1
4	F	243	HIS	3.0
4	F	140	GLU	3.0
1	A	262	TYR	2.9
2	B	248	LEU	2.9
2	D	218	LYS	2.9
3	E	116	LEU	2.8
1	C	302	MET	2.8
1	C	286	LEU	2.8
3	E	22	VAL	2.8
1	C	177	VAL	2.4
2	D	293	GLN	2.4
3	E	24	LEU	2.4
4	F	132	LEU	2.4
1	A	281	ALA	2.4
2	D	217	LEU	2.3
1	C	275	VAL	2.3
1	A	93	ILE	2.3
2	D	401	ARG	2.3
2	B	59	ASN	2.3
2	D	275	LEU	2.3
1	A	118	VAL	2.2
2	B	318	ILE	2.2
4	F	239	HIS	2.2
3	E	142	GLU	2.2
1	A	88	HIS	2.2
1	A	351	PHE	2.2
1	C	308	ARG	2.1
4	F	379	HIS	2.1
1	A	91	GLN	2.1
4	F	89	GLU	2.1
1	A	68	VAL	2.1
1	A	196	GLU	2.1
4	F	380	HIS	2.1
1	A	346	TRP	2.1

*Continued on next page...*

*Continued from previous page...*

Mol	Chain	Res	Type	RSRZ
2	B	57	THR	2.0
2	B	369	ARG	2.0
3	E	28	SER	2.0
2	D	272	PHE	2.0

## 6.2 Non-standard residues in protein, DNA, RNA chains ⓘ

There are no non-standard protein/DNA/RNA residues in this entry.

## 6.3 Carbohydrates ⓘ

There are no monosaccharides in this entry.

## 6.4 Ligands ⓘ

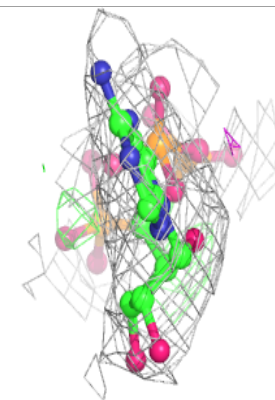
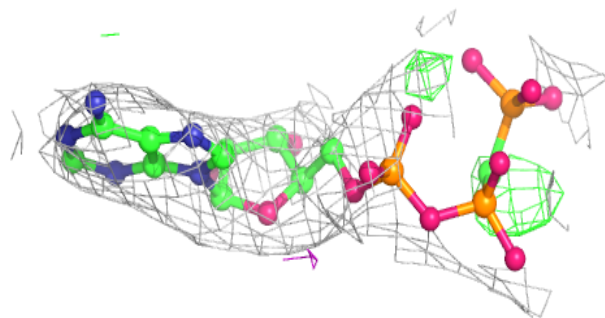
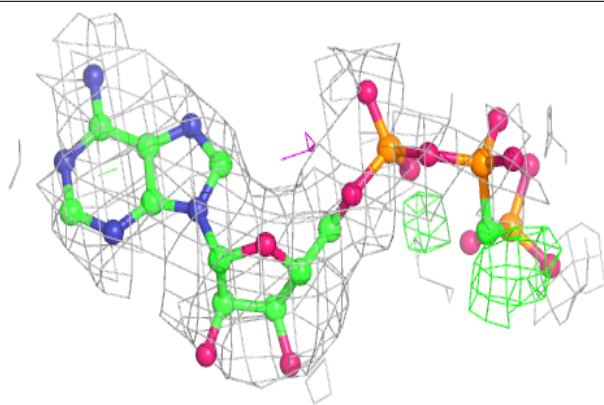
In the following table, the Atoms column lists the number of modelled atoms in the group and the number defined in the chemical component dictionary. The B-factors column lists the minimum, median, 95<sup>th</sup> percentile and maximum values of B factors of atoms in the group. The column labelled 'Q< 0.9' lists the number of atoms with occupancy less than 0.9.

Mol	Type	Chain	Res	Atoms	RSCC	RSR	B-factors(Å <sup>2</sup> )	Q<0.9
7	CA	B	503	1/1	0.65	0.10	128,128,128,128	0
7	CA	E	201	1/1	0.81	0.12	114,114,114,114	0
10	ACP	F	401	31/31	0.87	0.15	126,145,154,157	0
6	MG	A	502	1/1	0.91	0.18	69,69,69,69	0
8	GDP	D	501	28/28	0.95	0.18	72,82,93,98	0
9	WZS	B	504	18/18	0.96	0.19	67,82,91,93	0
6	MG	D	502	1/1	0.96	0.22	87,87,87,87	0
6	MG	C	502	1/1	0.97	0.16	57,57,57,57	0
5	GTP	A	501	32/32	0.97	0.15	58,66,72,75	0
7	CA	A	503	1/1	0.97	0.09	125,125,125,125	0
6	MG	B	502	1/1	0.97	0.17	55,55,55,55	0
8	GDP	B	501	28/28	0.98	0.16	53,61,66,67	0
6	MG	F	402	1/1	0.98	0.17	125,125,125,125	0
7	CA	C	503	1/1	0.98	0.10	95,95,95,95	0
5	GTP	C	501	32/32	0.98	0.18	50,57,62,66	0

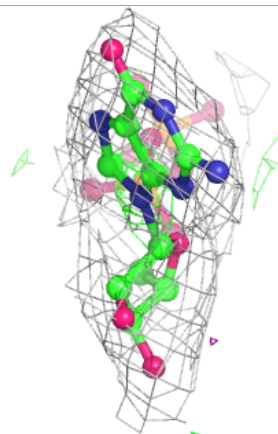
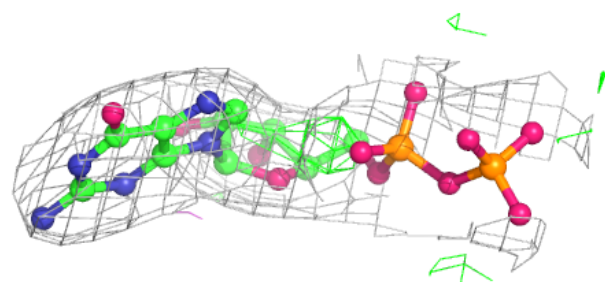
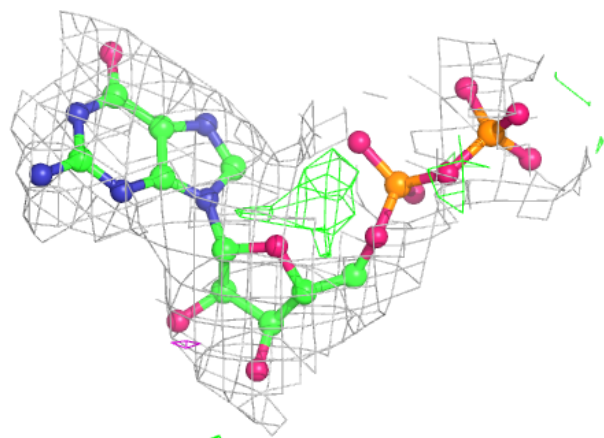
The following is a graphical depiction of the model fit to experimental electron density of all instances of the Ligand of Interest. In addition, ligands with molecular weight > 250 and outliers as shown on the geometry validation Tables will also be included. Each fit is shown from different orientation to approximate a three-dimensional view.

**Electron density around ACP F 401:**

$2mF_o-DF_c$  (at 0.7 rmsd) in gray  
 $mF_o-DF_c$  (at 3 rmsd) in purple (negative)  
and green (positive)

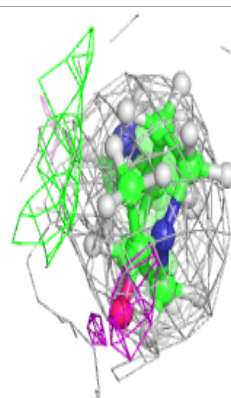
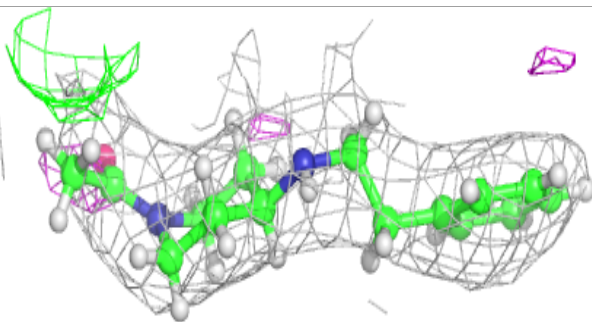
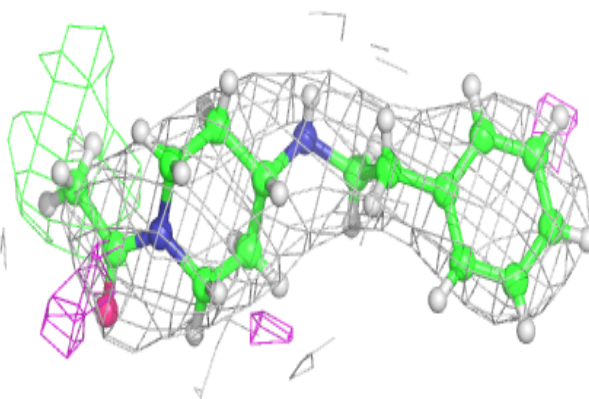
**Electron density around GDP D 501:**

$2mF_o-DF_c$  (at 0.7 rmsd) in gray  
 $mF_o-DF_c$  (at 3 rmsd) in purple (negative)  
and green (positive)

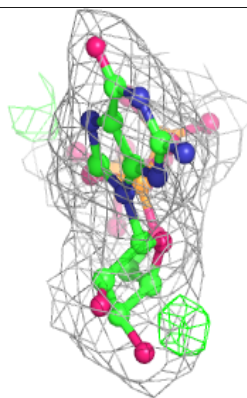
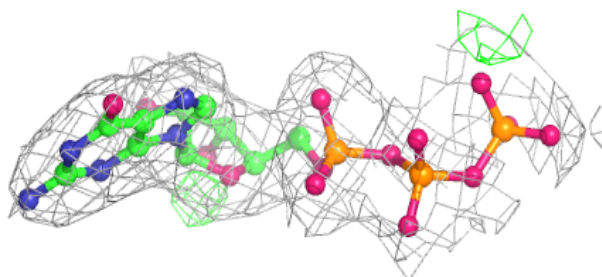
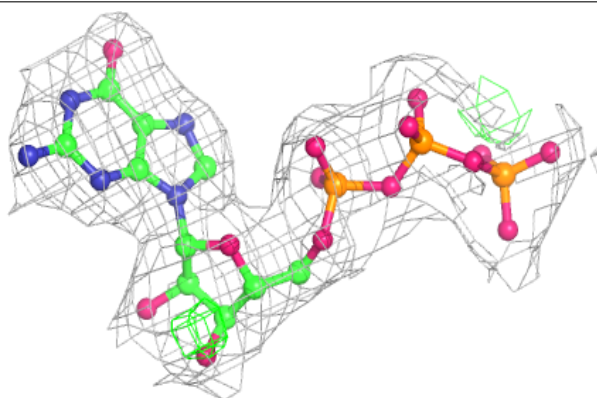


**Electron density around WZS B 504:**

$2mF_o-DF_c$  (at 0.7 rmsd) in gray  
 $mF_o-DF_c$  (at 3 rmsd) in purple (negative)  
and green (positive)

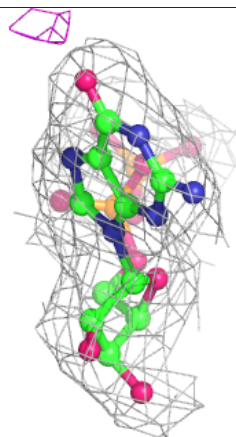
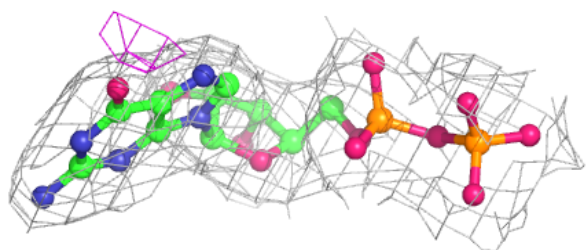
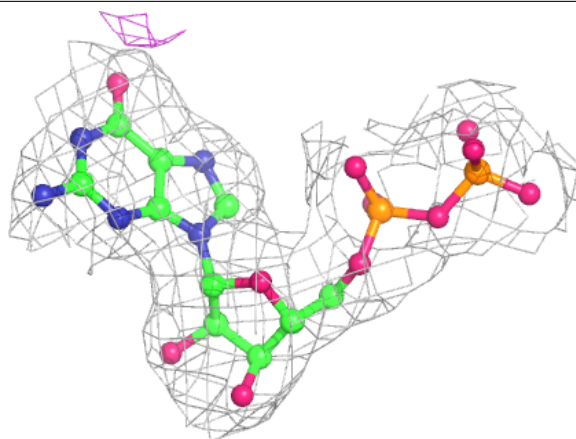
**Electron density around GTP A 501:**

$2mF_o-DF_c$  (at 0.7 rmsd) in gray  
 $mF_o-DF_c$  (at 3 rmsd) in purple (negative)  
and green (positive)

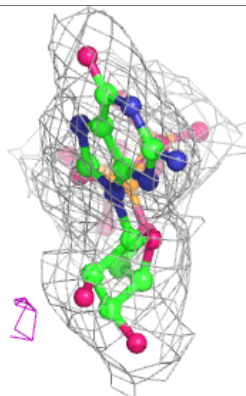
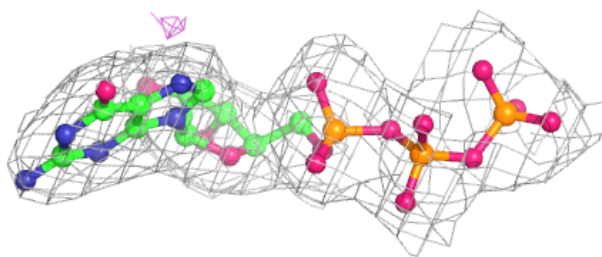
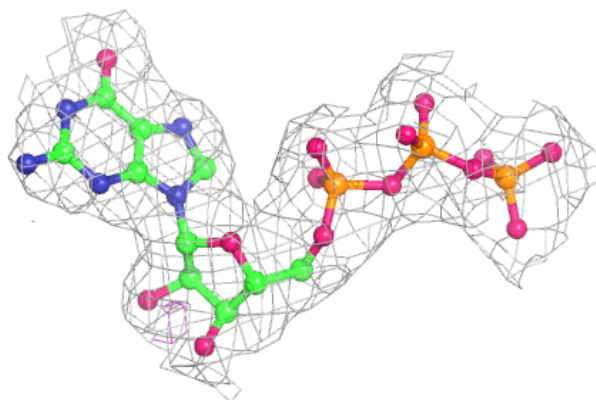


**Electron density around GDP B 501:**

$2mF_o-DF_c$  (at 0.7 rmsd) in gray  
 $mF_o-DF_c$  (at 3 rmsd) in purple (negative)  
and green (positive)

**Electron density around GTP C 501:**

$2mF_o-DF_c$  (at 0.7 rmsd) in gray  
 $mF_o-DF_c$  (at 3 rmsd) in purple (negative)  
and green (positive)



## 6.5 Other polymers [i](#)

There are no such residues in this entry.