



Full wwPDB X-ray Structure Validation Report ⓘ

Jun 21, 2021 – 02:26 PM EDT

PDB ID : 5S5L
Title : Tubulin-Z1492796719-complex
Authors : Muehlethaler, T.; Gioia, D.; Protá, A.E.; Sharpe, M.E.; Cavalli, A.; Steinmetz, M.O.
Deposited on : 2020-11-08
Resolution : 2.25 Å(reported)

This is a Full wwPDB X-ray Structure Validation Report for a publicly released PDB entry.

We welcome your comments at validation@mail.wwpdb.org

A user guide is available at

<https://www.wwpdb.org/validation/2017/XrayValidationReportHelp>

with specific help available everywhere you see the ⓘ symbol.

The following versions of software and data (see [references ⓘ](#)) were used in the production of this report:

MolProbity : 4.02b-467
Mogul : 1.8.5 (274361), CSD as541be (2020)
Xtriage (Phenix) : 1.13
EDS : 2.20
buster-report : 1.1.7 (2018)
Percentile statistics : 20191225.v01 (using entries in the PDB archive December 25th 2019)
Refmac : 5.8.0158
CCP4 : 7.0.044 (Gargrove)
Ideal geometry (proteins) : Engh & Huber (2001)
Ideal geometry (DNA, RNA) : Parkinson et al. (1996)
Validation Pipeline (wwPDB-VP) : 2.20

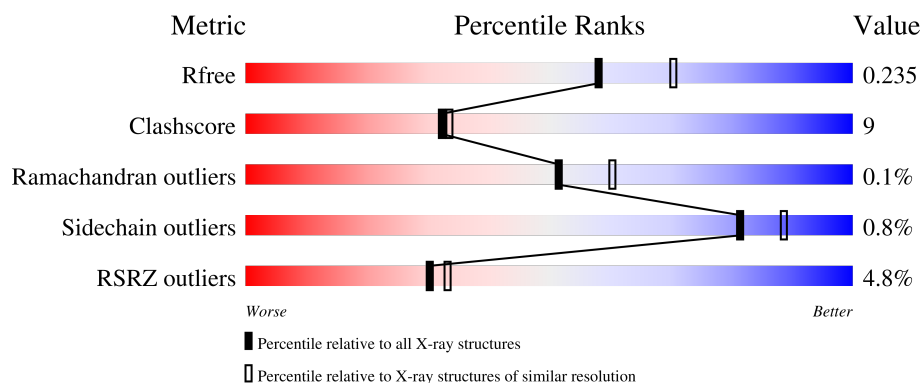
1 Overall quality at a glance

The following experimental techniques were used to determine the structure:

X-RAY DIFFRACTION


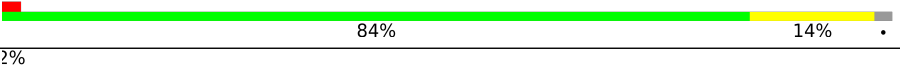
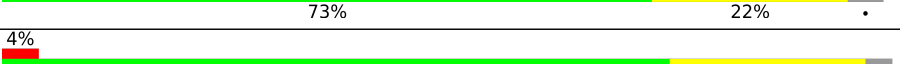
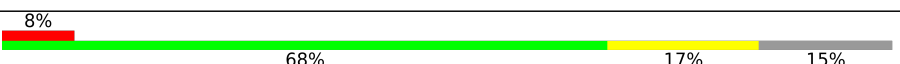

The reported resolution of this entry is 2.25 Å.

Percentile scores (ranging between 0-100) for global validation metrics of the entry are shown in the following graphic. The table shows the number of entries on which the scores are based.



Metric	Whole archive (#Entries)	Similar resolution (#Entries, resolution range(Å))
R_{free}	130704	1377 (2.26-2.26)
Clashscore	141614	1487 (2.26-2.26)
Ramachandran outliers	138981	1449 (2.26-2.26)
Sidechain outliers	138945	1450 (2.26-2.26)
RSRZ outliers	127900	1356 (2.26-2.26)

The table below summarises the geometric issues observed across the polymeric chains and their fit to the electron density. The red, orange, yellow and green segments of the lower bar indicate the fraction of residues that contain outliers for ≥ 3 , 2, 1 and 0 types of geometric quality criteria respectively. A grey segment represents the fraction of residues that are not modelled. The numeric value for each fraction is indicated below the corresponding segment, with a dot representing fractions $\leq 5\%$. The upper red bar (where present) indicates the fraction of residues that have poor fit to the electron density. The numeric value is given above the bar.

Mol	Chain	Length	Quality of chain
1	A	451	
1	C	451	
2	B	445	
2	D	445	
3	E	143	

Continued on next page...

Continued from previous page...

Mol	Chain	Length	Quality of chain
4	F	384	<div><div></div><div></div><div></div><div></div></div>

2 Entry composition

There are 12 unique types of molecules in this entry. The entry contains 18066 atoms, of which 14 are hydrogens and 0 are deuteriums.

In the tables below, the ZeroOcc column contains the number of atoms modelled with zero occupancy, the AltConf column contains the number of residues with at least one atom in alternate conformation and the Trace column contains the number of residues modelled with at most 2 atoms.

- Molecule 1 is a protein called Tubulin alpha-1B chain.

Mol	Chain	Residues	Atoms					ZeroOcc	AltConf	Trace
1	A	438	Total	C	N	O	S	0	0	0
			3424	2167	582	653	22			
1	C	440	Total	C	N	O	S	0	1	0
			3443	2178	585	657	23			

- Molecule 2 is a protein called Tubulin beta-2B chain.

Mol	Chain	Residues	Atoms					ZeroOcc	AltConf	Trace
2	B	425	Total	C	N	O	S	2	1	0
			3359	2109	577	646	27			
2	D	431	Total	C	N	O	S	5	0	0
			3368	2113	575	653	27			

- Molecule 3 is a protein called Stathmin-4.

Mol	Chain	Residues	Atoms					ZeroOcc	AltConf	Trace
3	E	121	Total	C	N	O	S	0	0	0
			1003	619	181	198	5			

There are 2 discrepancies between the modelled and reference sequences:

Chain	Residue	Modelled	Actual	Comment	Reference
E	3	MET	-	initiating methionine	UNP P63043
E	4	ALA	-	expression tag	UNP P63043

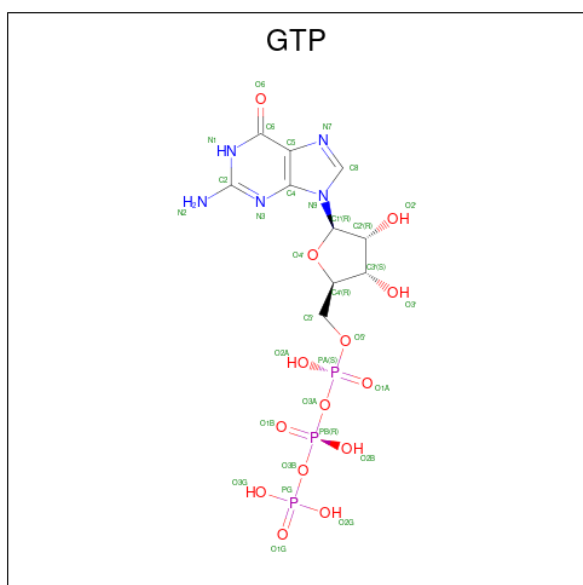
- Molecule 4 is a protein called Tubulin-Tyrosine Ligase.

Mol	Chain	Residues	Atoms					ZeroOcc	AltConf	Trace
4	F	348	Total	C	N	O	S	0	0	0
			2857	1832	491	520	14			

There are 6 discrepancies between the modelled and reference sequences:

Chain	Residue	Modelled	Actual	Comment	Reference
F	379	HIS	-	expression tag	UNP E1BQ43
F	380	HIS	-	expression tag	UNP E1BQ43
F	381	HIS	-	expression tag	UNP E1BQ43
F	382	HIS	-	expression tag	UNP E1BQ43
F	383	HIS	-	expression tag	UNP E1BQ43
F	384	HIS	-	expression tag	UNP E1BQ43

- Molecule 5 is GUANOSINE-5'-TRIPHOSPHATE (three-letter code: GTP) (formula: $C_{10}H_{16}N_5O_{14}P_3$).



Mol	Chain	Residues	Atoms					ZeroOcc	AltConf
5	A	1	Total	C	N	O	P	0	0
			32	10	5	14	3		
5	C	1	Total	C	N	O	P	0	0
			32	10	5	14	3		

- Molecule 6 is MAGNESIUM ION (three-letter code: MG) (formula: Mg).

Mol	Chain	Residues	Atoms		ZeroOcc	AltConf
6	A	1	Total	Mg	0	0
			1	1		
6	B	1	Total	Mg	0	0
			1	1		
6	C	1	Total	Mg	0	0
			1	1		
6	D	1	Total	Mg	0	0
			1	1		

Continued on next page...

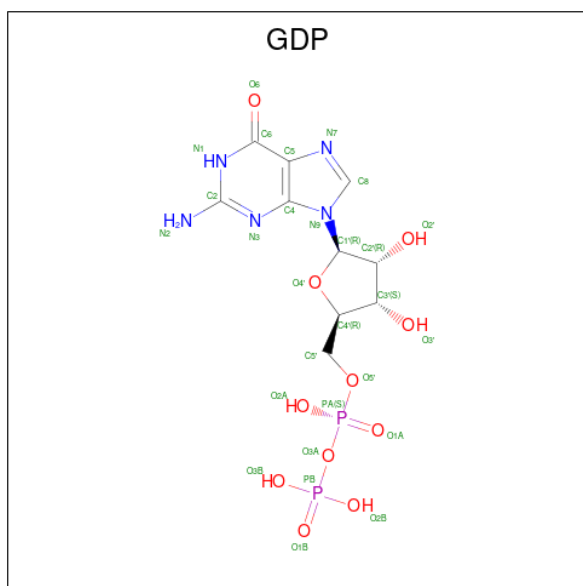
Continued from previous page...

Mol	Chain	Residues	Atoms		ZeroOcc	AltConf
6	F	1	Total	Mg	0	0
			1	1		

- Molecule 7 is CALCIUM ION (three-letter code: CA) (formula: Ca).

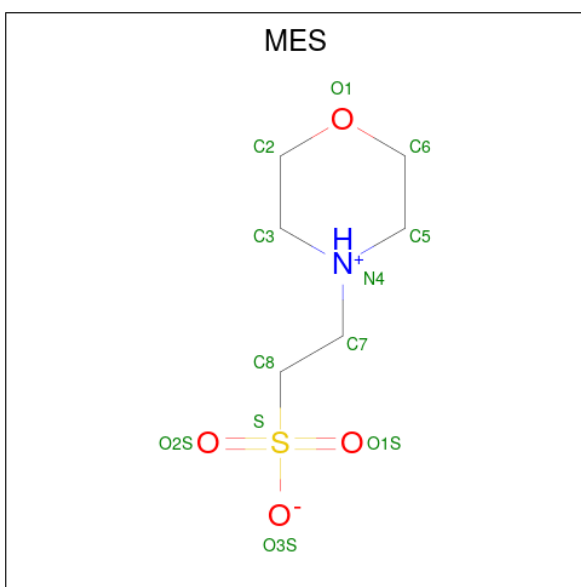
Mol	Chain	Residues	Atoms		ZeroOcc	AltConf
7	A	2	Total	Ca	0	0
			2	2		
7	B	1	Total	Ca	0	0
			1	1		
7	C	1	Total	Ca	0	0
			1	1		

- Molecule 8 is GUANOSINE-5'-DIPHOSPHATE (three-letter code: GDP) (formula: C₁₀H₁₅N₅O₁₁P₂).



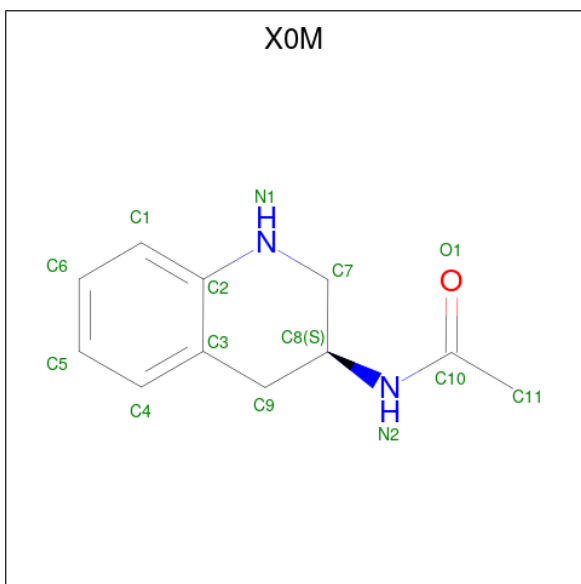
Mol	Chain	Residues	Atoms					ZeroOcc	AltConf
8	B	1	Total	C	N	O	P	0	0
			28	10	5	11	2		
8	D	1	Total	C	N	O	P	0	0
			28	10	5	11	2		

- Molecule 9 is 2-(N-MORPHOLINO)-ETHANESULFONIC ACID (three-letter code: MES) (formula: C₆H₁₃NO₄S).



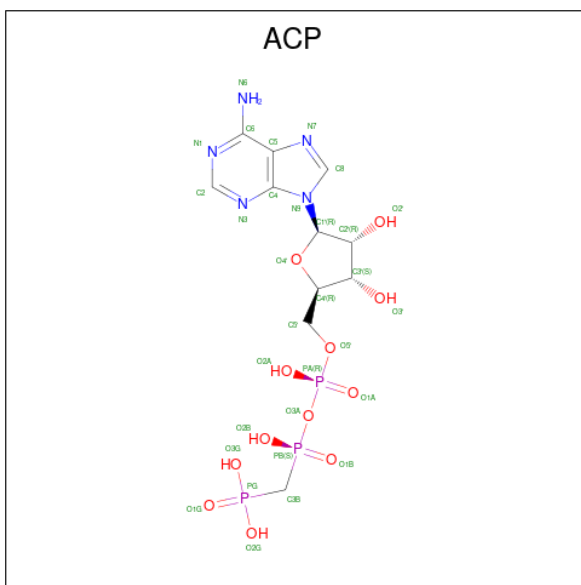
Mol	Chain	Residues	Atoms					ZeroOcc	AltConf
9	B	1	Total	C	N	O	S	0	0
			12	6	1	4	1		

- Molecule 10 is N-[(3S)-1,2,3,4-tetrahydroquinolin-3-yl]acetamide (three-letter code: X0M) (formula: $C_{11}H_{14}N_2O$) (labeled as "Ligand of Interest" by depositor).



Mol	Chain	Residues	Atoms					ZeroOcc	AltConf
10	B	1	Total	C	H	N	O	0	0
			28	11	14	2	1		

- Molecule 11 is PHOSPHOMETHYLPHOSPHONIC ACID ADENYLATE ESTER (three-letter code: ACP) (formula: $C_{11}H_{18}N_5O_{12}P_3$).



Mol	Chain	Residues	Atoms					ZeroOcc	AltConf
11	F	1	Total 31	C 11	N 5	O 12	P 3	0	0

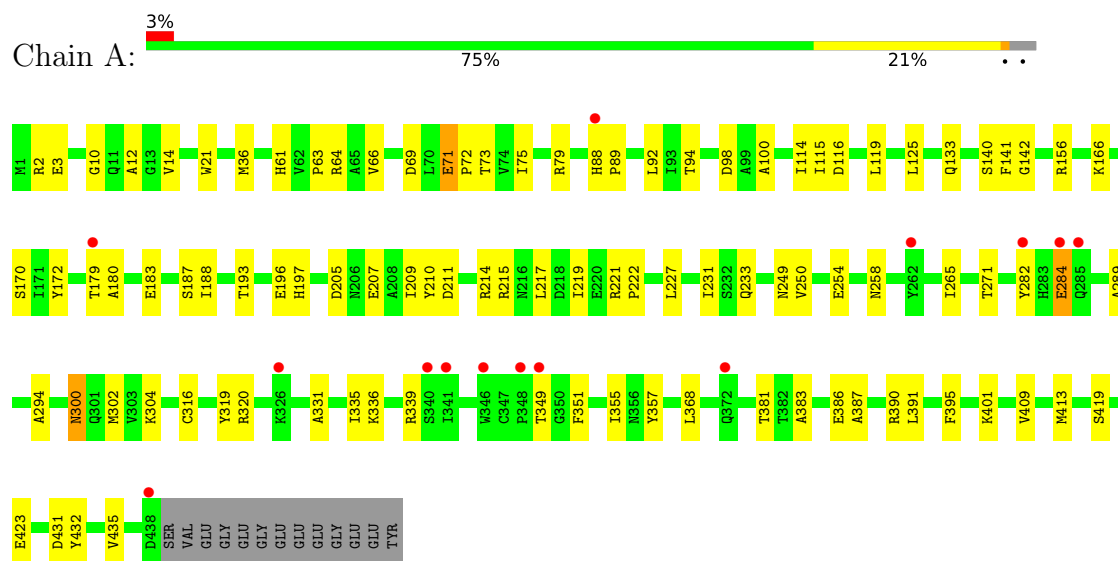
- Molecule 12 is water.

Mol	Chain	Residues	Atoms	ZeroOcc	AltConf
12	A	70	Total O 70 70	0	0
12	B	90	Total O 90 90	0	0
12	C	200	Total O 200 200	0	0
12	D	29	Total O 29 29	0	0
12	E	8	Total O 8 8	0	0
12	F	15	Total O 15 15	0	0

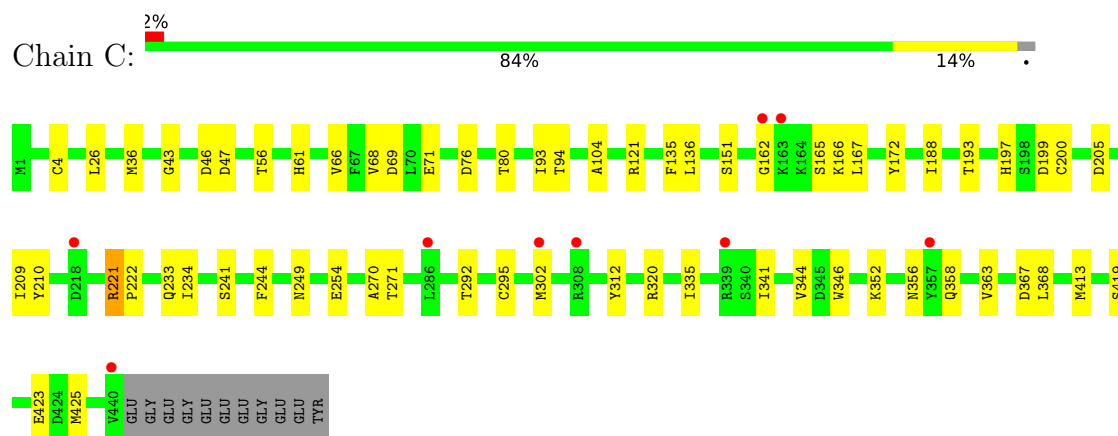
3 Residue-property plots [i](#)

These plots are drawn for all protein, RNA, DNA and oligosaccharide chains in the entry. The first graphic for a chain summarises the proportions of the various outlier classes displayed in the second graphic. The second graphic shows the sequence view annotated by issues in geometry and electron density. Residues are color-coded according to the number of geometric quality criteria for which they contain at least one outlier: green = 0, yellow = 1, orange = 2 and red = 3 or more. A red dot above a residue indicates a poor fit to the electron density ($RSRZ > 2$). Stretches of 2 or more consecutive residues without any outlier are shown as a green connector. Residues present in the sample, but not in the model, are shown in grey.

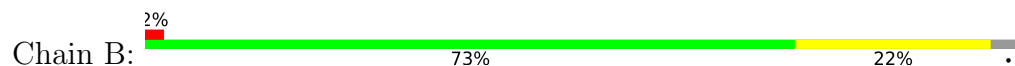
• Molecule 1: Tubulin alpha-1B chain

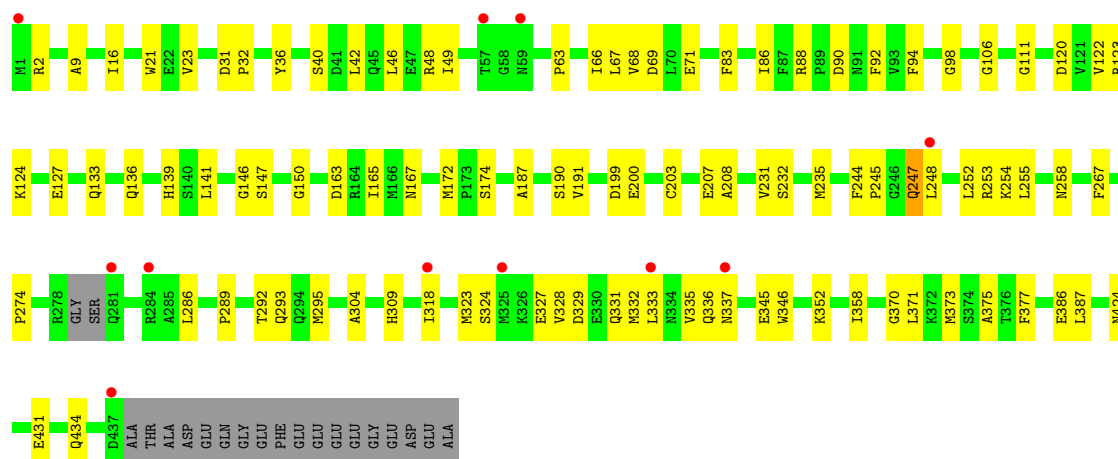


• Molecule 1: Tubulin alpha-1B chain

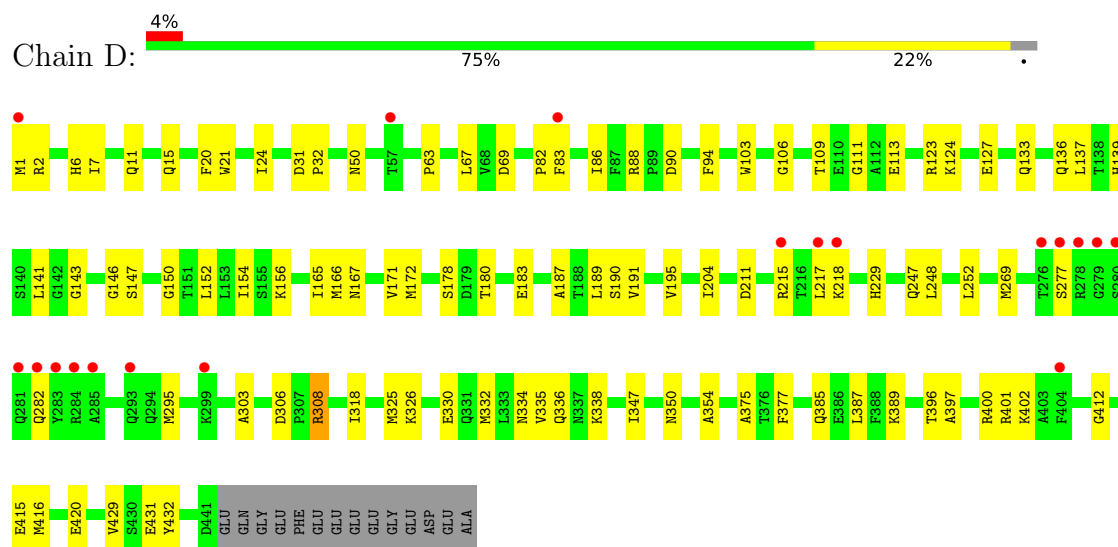


• Molecule 2: Tubulin beta-2B chain

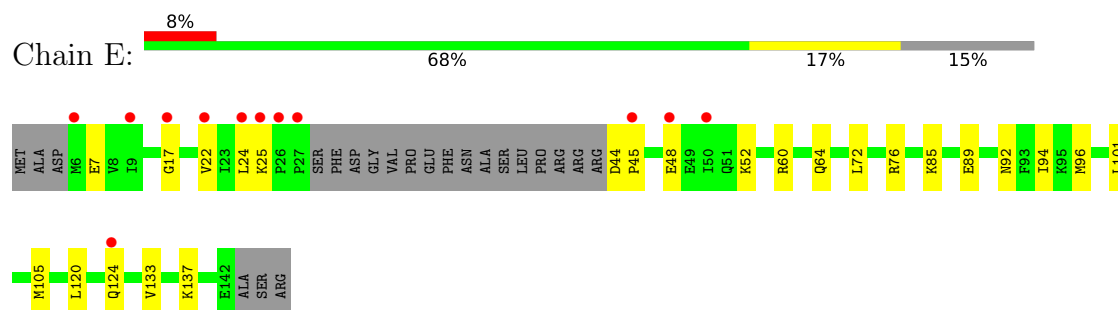




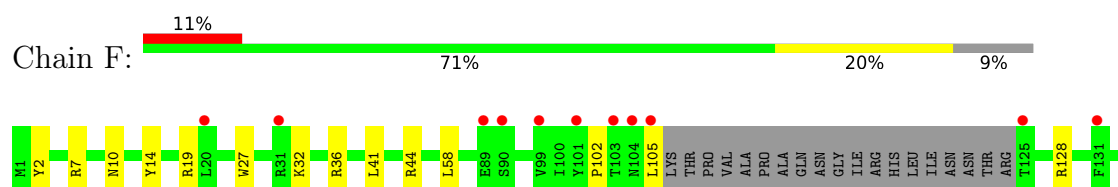
• Molecule 2: Tubulin beta-2B chain

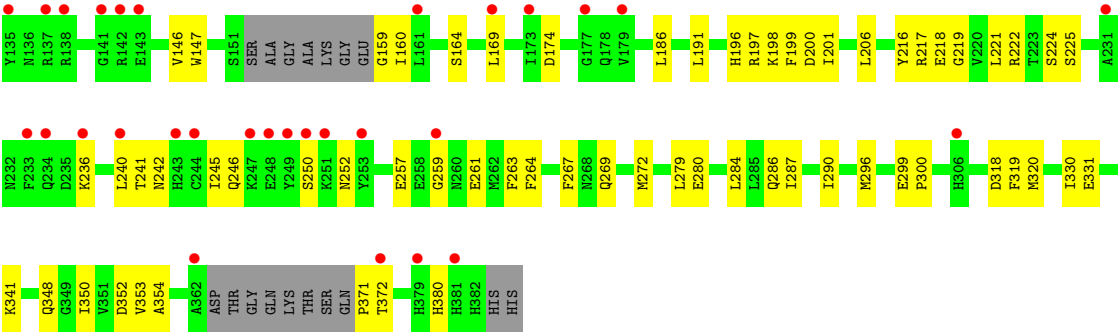


• Molecule 3: Stathmin-4



• Molecule 4: Tubulin-Tyrosine Ligase





4 Data and refinement statistics

Property	Value	Source
Space group	P 21 21 21	Depositor
Cell constants a, b, c, α , β , γ	105.12Å 159.02Å 179.19Å 90.00° 90.00° 90.00°	Depositor
Resolution (Å)	62.67 – 2.25 118.94 – 2.25	Depositor EDS
% Data completeness (in resolution range)	98.8 (62.67-2.25) 98.8 (118.94-2.25)	Depositor EDS
R_{merge}	0.08	Depositor
R_{sym}	(Not available)	Depositor
$\langle I/\sigma(I) \rangle$ ¹	1.87 (at 2.25Å)	Xtriage
Refinement program	PHENIX 1.18.2_3874	Depositor
R, R_{free}	0.204 , 0.235 0.204 , 0.235	Depositor DCC
R_{free} test set	7021 reflections (4.98%)	wwPDB-VP
Wilson B-factor (Å ²)	51.2	Xtriage
Anisotropy	0.351	Xtriage
Bulk solvent k_{sol} (e/Å ³), B_{sol} (Å ²)	0.31 , 44.3	EDS
L-test for twinning ²	$\langle L \rangle = 0.51$, $\langle L^2 \rangle = 0.34$	Xtriage
Estimated twinning fraction	No twinning to report.	Xtriage
F_o, F_c correlation	0.95	EDS
Total number of atoms	18066	wwPDB-VP
Average B, all atoms (Å ²)	69.0	wwPDB-VP

Xtriage's analysis on translational NCS is as follows: *The largest off-origin peak in the Patterson function is 2.68% of the height of the origin peak. No significant pseudotranslation is detected.*

¹Intensities estimated from amplitudes.

²Theoretical values of $\langle |L| \rangle$, $\langle L^2 \rangle$ for acentric reflections are 0.5, 0.333 respectively for untwinned datasets, and 0.375, 0.2 for perfectly twinned datasets.

5 Model quality [i](#)

5.1 Standard geometry [i](#)

Bond lengths and bond angles in the following residue types are not validated in this section: CA, MG, X0M, GDP, MES, ACP, GTP

The Z score for a bond length (or angle) is the number of standard deviations the observed value is removed from the expected value. A bond length (or angle) with $|Z| > 5$ is considered an outlier worth inspection. RMSZ is the root-mean-square of all Z scores of the bond lengths (or angles).

Mol	Chain	Bond lengths		Bond angles	
		RMSZ	# Z >5	RMSZ	# Z >5
1	A	0.25	0/3502	0.42	0/4754
1	C	0.27	0/3521	0.44	0/4780
2	B	0.26	0/3433	0.42	0/4647
2	D	0.25	0/3442	0.42	0/4664
3	E	0.24	0/1011	0.35	0/1341
4	F	0.24	0/2924	0.39	0/3951
All	All	0.25	0/17833	0.41	0/24137

There are no bond length outliers.

There are no bond angle outliers.

There are no chirality outliers.

There are no planarity outliers.

5.2 Too-close contacts [i](#)

In the following table, the Non-H and H(model) columns list the number of non-hydrogen atoms and hydrogen atoms in the chain respectively. The H(added) column lists the number of hydrogen atoms added and optimized by MolProbity. The Clashes column lists the number of clashes within the asymmetric unit, whereas Symm-Clashes lists symmetry-related clashes.

Mol	Chain	Non-H	H(model)	H(added)	Clashes	Symm-Clashes
1	A	3424	0	3335	71	0
1	C	3443	0	3352	41	0
2	B	3359	0	3235	72	0
2	D	3368	0	3236	62	0
3	E	1003	0	1019	18	0
4	F	2857	0	2821	53	0
5	A	32	0	12	1	0

Continued on next page...

Continued from previous page...

Mol	Chain	Non-H	H(model)	H(added)	Clashes	Symm-Clashes
5	C	32	0	12	0	0
6	A	1	0	0	0	0
6	B	1	0	0	0	0
6	C	1	0	0	0	0
6	D	1	0	0	0	0
6	F	1	0	0	0	0
7	A	2	0	0	0	0
7	B	1	0	0	0	0
7	C	1	0	0	0	0
8	B	28	0	12	0	0
8	D	28	0	12	1	0
9	B	12	0	12	2	0
10	B	14	14	0	0	0
11	F	31	0	14	5	0
12	A	70	0	0	3	0
12	B	90	0	0	2	0
12	C	200	0	0	2	0
12	D	29	0	0	3	0
12	E	8	0	0	1	0
12	F	15	0	0	0	0
All	All	18052	14	17072	304	0

The all-atom clashscore is defined as the number of clashes found per 1000 atoms (including hydrogen atoms). The all-atom clashscore for this structure is 9.

All (304) close contacts within the same asymmetric unit are listed below, sorted by their clash magnitude.

Atom-1	Atom-2	Interatomic distance (Å)	Clash overlap (Å)
4:F:102:PRO:HG2	4:F:105:LEU:HD13	1.47	0.95
2:D:217:LEU:HA	2:D:277:SER:HB3	1.52	0.91
2:D:334:ASN:HD21	2:D:338:LYS:HE3	1.35	0.90
1:A:381:THR:HG22	1:A:383:ALA:H	1.37	0.88
4:F:10:ASN:HB2	4:F:44:ARG:HH22	1.42	0.83
1:C:221:ARG:HG3	2:D:325:MET:HG2	1.61	0.81
1:A:71:GLU:OE2	1:A:73:THR:OG1	1.98	0.80
2:D:269:MET:HG3	2:D:303:ALA:HB3	1.64	0.77
4:F:241:THR:HG1	11:F:401:ACP:HO3'	1.29	0.74
1:A:336:LYS:HG3	3:E:24:LEU:HD13	1.69	0.73
2:B:83:PHE:O	2:B:86:ILE:HG22	1.89	0.72
2:D:136:GLN:HA	2:D:167:ASN:O	1.89	0.72
1:C:76:ASP:O	1:C:80:THR:HG22	1.90	0.72

Continued on next page...

Continued from previous page...

Atom-1	Atom-2	Interatomic distance (Å)	Clash overlap (Å)
2:B:253[A]:ARG:NH1	9:B:504:MES:O2S	2.23	0.72
1:A:335:ILE:HG23	1:A:339:ARG:HG3	1.72	0.71
2:D:295:MET:HE2	2:D:377:PHE:HB2	1.73	0.70
4:F:318:ASP:OD2	11:F:401:ACP:O2G	2.10	0.70
2:D:432:TYR:OH	12:D:601:HOH:O	2.09	0.69
2:D:334:ASN:ND2	2:D:338:LYS:HE3	2.06	0.69
2:D:431:GLU:OE1	12:D:602:HOH:O	2.10	0.69
1:C:209:ILE:HD11	1:C:302:MET:HE3	1.75	0.69
1:A:71:GLU:HG2	1:A:72:PRO:HD2	1.76	0.67
1:C:271:THR:HG21	1:C:295:CYS:O	1.94	0.67
3:E:48:GLU:HG2	3:E:52:LYS:HE3	1.76	0.67
2:B:274:PRO:HB3	2:B:286:LEU:HD22	1.77	0.67
1:C:47:ASP:OD2	12:C:601:HOH:O	2.13	0.67
1:C:4[A]:CYS:SG	1:C:136:LEU:HG	2.34	0.67
2:B:337:ASN:OD1	4:F:36:ARG:HD3	1.96	0.66
1:A:207:GLU:OE2	1:A:304:LYS:HD2	1.96	0.65
1:A:21:TRP:CZ3	1:A:63:PRO:HB3	2.32	0.65
2:D:106:GLY:O	2:D:111:GLY:HA3	1.96	0.64
1:C:249:ASN:OD1	1:C:356:ASN:ND2	2.24	0.64
2:B:345:GLU:OE1	2:B:345:GLU:N	2.22	0.64
4:F:371:PRO:HA	4:F:372:THR:O	1.98	0.64
2:B:136:GLN:HA	2:B:167:ASN:O	1.97	0.63
2:B:67:LEU:HD22	2:B:92:PHE:CE2	2.33	0.63
4:F:147:TRP:HB2	4:F:169:LEU:HD11	1.81	0.63
4:F:371:PRO:HA	4:F:372:THR:HB	1.81	0.62
2:D:21:TRP:CZ3	2:D:63:PRO:HB3	2.35	0.62
4:F:102:PRO:HG2	4:F:105:LEU:CD1	2.24	0.62
1:C:209:ILE:HD11	1:C:302:MET:CE	2.31	0.61
4:F:331:GLU:OE2	11:F:401:ACP:O3G	2.18	0.61
2:B:2:ARG:HB2	2:B:133:GLN:CG	2.31	0.60
2:B:88:ARG:NH1	2:B:90:ASP:HB2	2.17	0.60
2:D:83:PHE:O	2:D:86:ILE:HG22	2.01	0.60
1:C:270:ALA:O	1:C:302:MET:HG2	2.02	0.60
4:F:371:PRO:CA	4:F:372:THR:HB	2.31	0.60
1:A:88:HIS:HB2	1:A:89:PRO:HD2	1.84	0.60
1:A:36:MET:HB3	1:A:61:HIS:CE1	2.37	0.59
1:A:300:ASN:HB3	12:A:604:HOH:O	2.02	0.59
1:C:367:ASP:OD1	12:C:602:HOH:O	2.15	0.59
2:D:172:MET:HG3	2:D:387:LEU:HD11	1.84	0.59
1:C:93:ILE:HD11	1:C:121:ARG:HG3	1.83	0.59
4:F:236:LYS:HB3	4:F:240:LEU:HD13	1.85	0.59

Continued on next page...

Continued from previous page...

Atom-1	Atom-2	Interatomic distance (Å)	Clash overlap (Å)
2:B:16:ILE:HD13	2:B:231:VAL:HG11	1.84	0.58
2:B:69:ASP:O	2:B:94:PHE:HA	2.03	0.58
2:B:289:PRO:O	2:B:293:GLN:HG3	2.03	0.58
4:F:128:ARG:NH2	4:F:174:ASP:OD1	2.36	0.58
2:D:171:VAL:HA	2:D:204:ILE:O	2.04	0.58
2:B:46:LEU:HA	2:B:49:ILE:HB	1.86	0.58
4:F:320:MET:HG3	4:F:330:ILE:HD11	1.85	0.58
1:A:179:THR:HG21	2:B:248:LEU:CB	2.34	0.57
4:F:159:GLY:C	4:F:160:ILE:HD12	2.24	0.57
1:A:351:PHE:HE1	3:E:24:LEU:HD11	1.68	0.57
2:B:172:MET:HG3	2:B:387:LEU:HD11	1.87	0.57
2:B:208:ALA:HB2	2:B:304:ALA:HB2	1.86	0.57
1:C:151:SER:HB2	1:C:193:THR:CG2	2.35	0.57
1:C:244:PHE:CD1	1:C:358:GLN:HG2	2.40	0.56
2:D:69:ASP:O	2:D:94:PHE:HA	2.04	0.56
2:D:187:ALA:O	2:D:191:VAL:HG23	2.05	0.56
3:E:48:GLU:CG	3:E:52:LYS:HE3	2.35	0.56
1:A:71:GLU:HG2	1:A:72:PRO:CD	2.34	0.56
2:B:23:VAL:HG21	2:B:232:SER:HB3	1.87	0.56
1:C:292:THR:HG22	1:C:335:ILE:CD1	2.35	0.56
2:D:180:THR:O	2:D:183:GLU:HG3	2.04	0.56
4:F:10:ASN:CB	4:F:44:ARG:HH22	2.15	0.56
3:E:44:ASP:HB3	3:E:45:PRO:HD2	1.88	0.56
2:D:141:LEU:HA	2:D:147:SER:HB3	1.87	0.56
3:E:72:LEU:O	3:E:76:ARG:HG2	2.06	0.56
1:A:254:GLU:HG2	1:A:258:ASN:ND2	2.21	0.55
2:D:1:MET:HG3	2:D:50:ASN:HB2	1.88	0.55
1:C:312:TYR:CD1	1:C:341:ILE:HG23	2.42	0.55
3:E:7:GLU:O	3:E:22:VAL:HA	2.07	0.55
1:A:233:GLN:HG3	1:A:368:LEU:CD1	2.37	0.55
1:C:162:GLY:HA2	3:E:94:ILE:HD11	1.88	0.55
2:D:152:LEU:O	2:D:156:LYS:HG2	2.06	0.55
1:A:209:ILE:HD11	1:A:302:MET:SD	2.47	0.55
1:A:166:LYS:HE2	1:A:197:HIS:O	2.07	0.54
2:B:147:SER:OG	2:B:190:SER:OG	2.25	0.54
1:C:166:LYS:HE2	1:C:197:HIS:O	2.07	0.54
4:F:269:GLN:HA	4:F:272:MET:HE2	1.87	0.54
1:A:211:ASP:HB3	1:A:215:ARG:NH2	2.23	0.54
1:A:172:TYR:HB3	1:A:205:ASP:HA	1.88	0.54
4:F:147:TRP:HB2	4:F:169:LEU:CD1	2.38	0.54
2:B:141:LEU:HD12	2:B:172:MET:SD	2.47	0.54

Continued on next page...

Continued from previous page...

Atom-1	Atom-2	Interatomic distance (Å)	Clash overlap (Å)
2:B:247:GLN:H	2:B:247:GLN:NE2	2.06	0.54
2:D:123:ARG:O	2:D:127:GLU:HG3	2.07	0.54
1:C:167:LEU:HG	1:C:200:CYS:HB3	1.90	0.53
1:A:209:ILE:HG22	1:A:227:LEU:HD22	1.90	0.53
2:B:71:GLU:HG3	2:B:98:GLY:HA2	1.91	0.53
2:D:11:GLN:O	2:D:15:GLN:HG2	2.08	0.53
4:F:296:MET:SD	4:F:380:HIS:HB2	2.49	0.53
4:F:371:PRO:HA	4:F:372:THR:C	2.28	0.53
2:B:244:PHE:HB3	2:B:245:PRO:HD2	1.91	0.53
3:E:85:LYS:O	3:E:89:GLU:HG3	2.09	0.53
1:C:320:ARG:HA	1:C:356:ASN:O	2.08	0.52
4:F:241:THR:OG1	11:F:401:ACP:O3'	2.06	0.52
1:A:265:ILE:HG23	1:A:432:TYR:CE1	2.45	0.52
1:A:69:ASP:O	1:A:94:THR:HA	2.09	0.52
2:B:292:THR:HG22	2:B:335:VAL:HG21	1.92	0.52
2:D:147:SER:HB2	2:D:190:SER:OG	2.08	0.52
1:A:188:ILE:HD12	1:A:395:PHE:HB2	1.90	0.52
1:A:409:VAL:HA	1:A:413:MET:O	2.10	0.52
2:D:21:TRP:CE3	2:D:63:PRO:HB3	2.44	0.52
4:F:200:ASP:OD1	4:F:222:ARG:HB2	2.10	0.52
2:D:143:GLY:HA3	8:D:501:GDP:O3A	2.10	0.51
3:E:60:ARG:O	3:E:64:GLN:HG3	2.10	0.51
1:C:66:VAL:HG12	1:C:68:VAL:HG23	1.93	0.51
2:B:36:TYR:CD1	2:B:46:LEU:HD21	2.46	0.51
1:C:234:ILE:HG12	1:C:302:MET:HE2	1.92	0.51
4:F:197:ARG:NH1	4:F:257:GLU:OE2	2.32	0.51
1:A:66:VAL:HG23	1:A:125:LEU:HD12	1.92	0.51
2:B:124:LYS:HD3	2:B:124:LYS:C	2.32	0.51
1:A:196:GLU:OE1	1:A:196:GLU:HA	2.10	0.51
2:B:187:ALA:O	2:B:191:VAL:HG23	2.11	0.51
2:B:88:ARG:HH11	2:B:90:ASP:HB2	1.76	0.50
4:F:320:MET:CG	4:F:330:ILE:HD11	2.42	0.50
1:A:98:ASP:HB2	5:A:501:GTP:O2G	2.11	0.50
1:C:419:SER:O	1:C:423:GLU:HG3	2.11	0.50
1:A:419:SER:O	1:A:423:GLU:HG3	2.12	0.50
1:A:187:SER:HB3	1:A:391:LEU:HD21	1.93	0.50
2:B:200:GLU:OE2	2:B:255:LEU:HG	2.11	0.50
3:E:137:LYS:NZ	12:E:201:HOH:O	2.27	0.50
1:C:233:GLN:HG3	1:C:368:LEU:CD1	2.41	0.50
1:C:292:THR:HG22	1:C:335:ILE:HD12	1.94	0.50
1:A:284:GLU:CD	1:A:284:GLU:H	2.15	0.49

Continued on next page...

Continued from previous page...

Atom-1	Atom-2	Interatomic distance (Å)	Clash overlap (Å)
2:D:318:ILE:N	2:D:318:ILE:HD12	2.27	0.49
2:D:347:ILE:HG22	2:D:350:ASN:HB3	1.94	0.49
2:B:424:ASN:HB3	12:B:606:HOH:O	2.10	0.49
2:D:326:LYS:O	2:D:330:GLU:HG3	2.13	0.49
1:A:2:ARG:HB2	1:A:133:GLN:HE21	1.78	0.49
1:A:210:TYR:CZ	1:A:222:PRO:HD2	2.47	0.49
2:B:324:SER:HB3	2:B:327:GLU:HB3	1.95	0.49
2:B:431:GLU:O	2:B:434:GLN:HG2	2.12	0.49
2:D:416:MET:O	2:D:420:GLU:HG3	2.13	0.49
2:B:2:ARG:HB2	2:B:133:GLN:HE21	1.78	0.49
2:B:42:LEU:H	2:B:42:LEU:HD12	1.77	0.49
2:B:370:GLY:O	2:B:371:LEU:HD23	2.13	0.49
2:B:147:SER:HG	2:B:190:SER:HG	1.55	0.49
2:B:66:ILE:HD12	2:B:122:VAL:HG22	1.94	0.48
2:B:106:GLY:O	2:B:111:GLY:HA3	2.13	0.48
1:C:234:ILE:HG12	1:C:302:MET:CE	2.44	0.48
1:A:431:ASP:O	1:A:435:VAL:HG23	2.13	0.48
2:B:2:ARG:HB2	2:B:133:GLN:HG3	1.96	0.48
1:C:135:PHE:O	1:C:136:LEU:HD23	2.13	0.48
2:D:2:ARG:HB3	2:D:133:GLN:CG	2.44	0.48
1:A:210:TYR:CE1	1:A:222:PRO:HD2	2.48	0.48
1:C:104:ALA:HB2	1:C:413:MET:SD	2.54	0.48
4:F:14:TYR:HB3	4:F:41:LEU:HD13	1.94	0.48
1:A:227:LEU:O	1:A:231:ILE:HG13	2.13	0.48
2:B:295:MET:HG2	2:B:377:PHE:HB2	1.96	0.48
11:F:401:ACP:O3G	11:F:401:ACP:O1B	2.32	0.48
2:D:124:LYS:C	2:D:124:LYS:HD3	2.34	0.48
1:A:289:ALA:HA	1:A:331:ALA:CB	2.43	0.48
2:B:274:PRO:HB3	2:B:286:LEU:CD2	2.43	0.47
2:B:295:MET:CG	2:B:377:PHE:HB2	2.44	0.47
2:D:20:PHE:CZ	2:D:24:ILE:HD13	2.49	0.47
2:B:199:ASP:OD1	9:B:504:MES:H62	2.13	0.47
2:D:248:LEU:HD23	2:D:354:ALA:HB2	1.94	0.47
1:A:386:GLU:O	1:A:390:ARG:HG3	2.14	0.47
2:B:31:ASP:HB2	2:B:32:PRO:CD	2.45	0.47
2:B:329:ASP:O	2:B:333:LEU:HG	2.15	0.47
1:A:21:TRP:CE3	1:A:63:PRO:HB3	2.50	0.47
1:A:71:GLU:HG2	1:A:72:PRO:N	2.29	0.47
1:A:294:ALA:O	1:A:300:ASN:ND2	2.44	0.47
2:B:123:ARG:O	2:B:127:GLU:HG3	2.15	0.47
4:F:267:PHE:CD2	4:F:279:LEU:HD13	2.50	0.47

Continued on next page...

Continued from previous page...

Atom-1	Atom-2	Interatomic distance (Å)	Clash overlap (Å)
2:D:412:GLY:C	3:E:133:VAL:HG13	2.35	0.47
1:A:217:LEU:HD21	1:A:368:LEU:HD23	1.97	0.47
2:B:2:ARG:HB2	2:B:133:GLN:NE2	2.30	0.47
2:D:88:ARG:NH1	2:D:90:ASP:HB2	2.28	0.46
2:D:2:ARG:HB3	2:D:133:GLN:HG2	1.96	0.46
4:F:287:ILE:HG23	4:F:319:PHE:CZ	2.50	0.46
1:A:320:ARG:HD2	12:A:653:HOH:O	2.15	0.46
2:B:337:ASN:ND2	4:F:58:LEU:HD21	2.30	0.46
3:E:92:ASN:O	3:E:96:MET:HG2	2.14	0.46
4:F:348:GLN:NE2	4:F:352:ASP:OD1	2.48	0.46
2:D:1:MET:HG3	2:D:50:ASN:CB	2.46	0.46
2:D:31:ASP:HB2	2:D:32:PRO:CD	2.45	0.46
1:A:214:ARG:HG2	1:A:219:ILE:O	2.16	0.46
2:D:397:ALA:O	2:D:401:ARG:NH1	2.48	0.46
2:D:402:LYS:HE2	2:D:415:GLU:OE1	2.16	0.46
1:A:79:ARG:HG2	1:A:92:LEU:HD12	1.98	0.46
2:D:31:ASP:HB2	2:D:32:PRO:HD2	1.98	0.46
4:F:146:VAL:HG22	4:F:164:SER:HB3	1.97	0.46
4:F:267:PHE:CE2	4:F:279:LEU:HD13	2.50	0.46
2:B:295:MET:SD	2:B:375:ALA:HB1	2.56	0.46
2:D:165:ILE:HG21	2:D:252:LEU:HB3	1.98	0.45
3:E:120:LEU:O	3:E:124:GLN:HG3	2.16	0.45
2:B:21:TRP:CZ3	2:B:63:PRO:HB3	2.52	0.45
2:D:396:THR:O	2:D:400:ARG:HG2	2.16	0.45
4:F:191:LEU:HD12	4:F:196:HIS:CE1	2.52	0.45
4:F:350:ILE:O	4:F:354:ALA:HB3	2.17	0.45
4:F:201:ILE:HG12	4:F:221:LEU:HG	1.98	0.45
4:F:286:GLN:O	4:F:290:ILE:HG13	2.16	0.45
1:A:179:THR:HA	2:B:352:LYS:HD2	1.98	0.45
1:C:151:SER:HB2	1:C:193:THR:HG22	1.99	0.45
2:B:163:ASP:O	2:B:253[A]:ARG:NH2	2.42	0.45
4:F:217:ARG:HG3	4:F:218:GLU:HG2	2.00	0.44
1:A:100:ALA:HA	2:B:254:LYS:HG3	2.00	0.44
12:B:601:HOH:O	3:E:85:LYS:NZ	2.50	0.44
1:C:93:ILE:CD1	1:C:121:ARG:HG3	2.47	0.44
2:D:67:LEU:N	2:D:67:LEU:HD12	2.32	0.44
2:D:146:GLY:O	2:D:150:GLY:HA3	2.18	0.44
1:C:46:ASP:N	1:C:46:ASP:OD1	2.50	0.44
2:D:154:ILE:HG23	2:D:166:MET:HG2	2.00	0.44
1:C:36:MET:HB3	1:C:61:HIS:CE1	2.52	0.44
4:F:198:LYS:HG2	4:F:199:PHE:H	1.83	0.44

Continued on next page...

Continued from previous page...

Atom-1	Atom-2	Interatomic distance (Å)	Clash overlap (Å)
2:B:231:VAL:O	2:B:235:MET:HG3	2.18	0.43
1:C:172:TYR:HB3	1:C:205:ASP:HA	2.00	0.43
4:F:371:PRO:HA	4:F:372:THR:CB	2.44	0.43
1:A:289:ALA:HA	1:A:331:ALA:HB1	2.00	0.43
2:B:332:MET:O	2:B:336:GLN:HG3	2.17	0.43
1:C:241:SER:HA	1:C:249:ASN:OD1	2.17	0.43
4:F:259:GLY:O	4:F:261:GLU:HG3	2.18	0.43
2:D:385:GLN:O	2:D:389:LYS:HG3	2.18	0.43
4:F:197:ARG:HB2	4:F:224:SER:O	2.17	0.43
2:D:211:ASP:O	2:D:215:ARG:HB2	2.19	0.43
2:B:309:HIS:ND1	2:B:386:GLU:OE2	2.44	0.43
2:D:178:SER:OG	2:D:183:GLU:OE2	2.28	0.43
2:B:42:LEU:HB2	2:B:358:ILE:HD11	2.01	0.43
2:B:165:ILE:HG21	2:B:252:LEU:HB3	2.01	0.43
4:F:7:ARG:NH1	4:F:32:LYS:O	2.52	0.43
4:F:242:ASN:HD22	4:F:245:ILE:HD12	1.84	0.43
1:A:249:ASN:HA	1:A:254:GLU:HB3	2.01	0.43
2:D:109:THR:O	2:D:113:GLU:HG2	2.19	0.43
1:A:180:ALA:HA	2:B:258:ASN:OD1	2.19	0.42
1:A:401:LYS:HG3	2:B:346:TRP:CE3	2.54	0.42
2:D:191:VAL:O	2:D:195:VAL:HG23	2.19	0.42
2:D:318:ILE:HG12	12:D:606:HOH:O	2.19	0.42
1:A:250:VAL:HG12	1:A:254:GLU:OE1	2.19	0.42
2:B:324:SER:O	2:B:328:VAL:HG23	2.19	0.42
2:B:331:GLN:O	2:B:335:VAL:HG23	2.20	0.42
1:A:233:GLN:HG3	1:A:368:LEU:HD12	2.01	0.42
2:B:318:ILE:N	2:B:318:ILE:HD12	2.34	0.42
2:D:332:MET:O	2:D:336:GLN:HG3	2.19	0.42
1:A:3:GLU:HG2	1:A:64:ARG:CZ	2.50	0.42
4:F:280:GLU:OE1	4:F:284:LEU:HD23	2.20	0.42
4:F:299:GLU:HB3	4:F:300:PRO:HD3	2.01	0.42
2:B:40:SER:OG	2:B:42:LEU:HD13	2.20	0.42
4:F:222:ARG:O	4:F:241:THR:HB	2.20	0.42
2:B:9:ALA:HA	2:B:68:VAL:O	2.19	0.42
2:B:387:LEU:C	2:B:387:LEU:HD23	2.40	0.42
1:C:210:TYR:CZ	1:C:222:PRO:HD2	2.54	0.42
2:D:295:MET:SD	2:D:375:ALA:HB1	2.59	0.42
4:F:246:GLN:O	4:F:250:SER:HB3	2.19	0.42
1:A:319:TYR:HB2	1:A:355:ILE:HG12	2.01	0.42
4:F:219:GLY:HA3	4:F:264:PHE:CZ	2.55	0.42
2:D:215:ARG:O	2:D:218:LYS:HE3	2.20	0.41

Continued on next page...

Continued from previous page...

Atom-1	Atom-2	Interatomic distance (Å)	Clash overlap (Å)
2:D:385:GLN:HB2	2:D:429:VAL:HG13	2.02	0.41
2:D:387:LEU:HD23	2:D:387:LEU:C	2.40	0.41
4:F:216:TYR:CE2	4:F:218:GLU:HB2	2.54	0.41
1:A:114:ILE:HG12	1:A:114:ILE:O	2.20	0.41
1:A:119:LEU:HD11	1:A:156:ARG:HB3	2.01	0.41
2:B:42:LEU:HD12	2:B:42:LEU:N	2.34	0.41
2:D:6:HIS:CD2	2:D:21:TRP:HE1	2.38	0.41
2:D:7:ILE:O	2:D:137:LEU:HA	2.20	0.41
1:A:12:ALA:HB3	1:A:140:SER:HB3	2.03	0.41
1:A:75:ILE:HB	1:A:94:THR:CG2	2.50	0.41
1:A:142:GLY:HA3	1:A:183:GLU:OE2	2.20	0.41
1:A:193:THR:HG23	12:A:645:HOH:O	2.21	0.41
1:A:349:THR:HB	3:E:25:LYS:HB3	2.03	0.41
1:C:26:LEU:HD12	1:C:363:VAL:HG22	2.02	0.41
1:C:43:GLY:HA2	1:C:56:THR:O	2.20	0.41
4:F:2:TYR:HB2	4:F:27:TRP:CD2	2.56	0.41
4:F:225:SER:HB2	4:F:252:ASN:O	2.21	0.41
4:F:263:PHE:CZ	4:F:341:LYS:HE2	2.56	0.41
1:A:12:ALA:CB	1:A:140:SER:HB3	2.51	0.41
2:D:141:LEU:HD12	2:D:172:MET:SD	2.61	0.41
2:B:120:ASP:HA	2:B:123:ARG:NH1	2.35	0.41
3:E:101:LEU:O	3:E:105:MET:HG2	2.21	0.41
1:A:75:ILE:HD12	1:A:94:THR:HG22	2.01	0.41
1:A:271:THR:HG23	1:A:300:ASN:HD22	1.85	0.41
2:B:203:CYS:SG	2:B:267:PHE:HB3	2.61	0.41
1:C:254:GLU:HG2	1:C:352:LYS:HE2	2.03	0.41
1:A:141:PHE:CE1	1:A:170:SER:HB3	2.56	0.41
1:C:165:SER:HA	1:C:199:ASP:OD2	2.21	0.41
2:B:174:SER:OG	2:B:207:GLU:HB2	2.21	0.40
1:C:69:ASP:O	1:C:94:THR:HA	2.21	0.40
1:A:10:GLY:O	1:A:14:VAL:HG23	2.22	0.40
2:B:146:GLY:O	2:B:150:GLY:HA3	2.20	0.40
2:B:244:PHE:CE1	2:B:358:ILE:HD12	2.56	0.40
1:C:344:VAL:HG21	1:C:346:TRP:CE2	2.56	0.40
4:F:19:ARG:O	4:F:19:ARG:HD2	2.22	0.40
1:C:188:ILE:HG13	1:C:425:MET:HG3	2.02	0.40
2:D:306:ASP:OD1	2:D:308:ARG:HG3	2.22	0.40
4:F:206:LEU:HD23	4:F:353:VAL:CG2	2.52	0.40
1:A:357:TYR:CZ	3:E:17:GLY:HA2	2.56	0.40
1:A:387:ALA:HA	1:A:390:ARG:HD3	2.04	0.40
1:A:21:TRP:CH2	1:A:63:PRO:HB3	2.56	0.40

Continued on next page...

Continued from previous page...

Atom-1	Atom-2	Interatomic distance (Å)	Clash overlap (Å)
1:A:115:ILE:HG23	1:A:116:ASP:N	2.37	0.40
1:A:187:SER:CB	1:A:391:LEU:HD21	2.51	0.40
2:B:323:MET:CE	2:B:373:MET:HB2	2.51	0.40
2:D:103:TRP:CE3	2:D:189:LEU:HD13	2.57	0.40

There are no symmetry-related clashes.

5.3 Torsion angles [i](#)

5.3.1 Protein backbone [i](#)

In the following table, the Percentiles column shows the percent Ramachandran outliers of the chain as a percentile score with respect to all X-ray entries followed by that with respect to entries of similar resolution.

The Analysed column shows the number of residues for which the backbone conformation was analysed, and the total number of residues.

Mol	Chain	Analysed	Favoured	Allowed	Outliers	Percentiles	
1	A	436/451 (97%)	428 (98%)	8 (2%)	0	100	100
1	C	439/451 (97%)	429 (98%)	10 (2%)	0	100	100
2	B	422/445 (95%)	413 (98%)	9 (2%)	0	100	100
2	D	429/445 (96%)	414 (96%)	13 (3%)	2 (0%)	29	29
3	E	117/143 (82%)	117 (100%)	0	0	100	100
4	F	340/384 (88%)	325 (96%)	14 (4%)	1 (0%)	41	46
All	All	2183/2319 (94%)	2126 (97%)	54 (2%)	3 (0%)	51	60

All (3) Ramachandran outliers are listed below:

Mol	Chain	Res	Type
4	F	186	LEU
2	D	282	GLN
2	D	82	PRO

5.3.2 Protein sidechains [i](#)

In the following table, the Percentiles column shows the percent sidechain outliers of the chain as a percentile score with respect to all X-ray entries followed by that with respect to entries of similar

resolution.

The Analysed column shows the number of residues for which the sidechain conformation was analysed, and the total number of residues.

Mol	Chain	Analysed	Rotameric	Outliers	Percentiles	
1	A	369/379 (97%)	363 (98%)	6 (2%)	62	73
1	C	372/379 (98%)	370 (100%)	2 (0%)	88	92
2	B	368/383 (96%)	365 (99%)	3 (1%)	81	88
2	D	368/383 (96%)	363 (99%)	5 (1%)	67	76
3	E	109/127 (86%)	109 (100%)	0	100	100
4	F	314/342 (92%)	314 (100%)	0	100	100
All	All	1900/1993 (95%)	1884 (99%)	16 (1%)	81	88

All (16) residues with a non-rotameric sidechain are listed below:

Mol	Chain	Res	Type
1	A	71	GLU
1	A	221	ARG
1	A	282	TYR
1	A	284	GLU
1	A	300	ASN
1	A	316	CYS
2	B	48	ARG
2	B	139	HIS
2	B	247	GLN
1	C	71	GLU
1	C	221	ARG
2	D	139	HIS
2	D	229	HIS
2	D	247	GLN
2	D	308	ARG
2	D	335	VAL

Sometimes sidechains can be flipped to improve hydrogen bonding and reduce clashes. All (17) such sidechains are listed below:

Mol	Chain	Res	Type
1	A	11	GLN
1	A	88	HIS
1	A	300	ASN
2	B	15	GLN
2	B	247	GLN

Continued on next page...

Continued from previous page...

Mol	Chain	Res	Type
2	B	294	GLN
2	B	424	ASN
1	C	11	GLN
1	C	300	ASN
2	D	294	GLN
2	D	300	ASN
3	E	92	ASN
4	F	180	HIS
4	F	229	ASN
4	F	269	GLN
4	F	333	ASN
4	F	380	HIS

5.3.3 RNA [i](#)

There are no RNA molecules in this entry.

5.4 Non-standard residues in protein, DNA, RNA chains [i](#)

There are no non-standard protein/DNA/RNA residues in this entry.

5.5 Carbohydrates [i](#)

There are no monosaccharides in this entry.

5.6 Ligand geometry [i](#)

Of 16 ligands modelled in this entry, 9 are monoatomic - leaving 7 for Mogul analysis.

In the following table, the Counts columns list the number of bonds (or angles) for which Mogul statistics could be retrieved, the number of bonds (or angles) that are observed in the model and the number of bonds (or angles) that are defined in the Chemical Component Dictionary. The Link column lists molecule types, if any, to which the group is linked. The Z score for a bond length (or angle) is the number of standard deviations the observed value is removed from the expected value. A bond length (or angle) with $|Z| > 2$ is considered an outlier worth inspection. RMSZ is the root-mean-square of all Z scores of the bond lengths (or angles).

Mol	Type	Chain	Res	Link	Bond lengths			Bond angles		
					Counts	RMSZ	$\# Z > 2$	Counts	RMSZ	$\# Z > 2$
8	GDP	B	501	6	24,30,30	1.16	2 (8%)	31,47,47	1.91	7 (22%)

Mol	Type	Chain	Res	Link	Bond lengths			Bond angles		
					Counts	RMSZ	# Z > 2	Counts	RMSZ	# Z > 2
5	GTP	A	501	6	26,34,34	0.98	1 (3%)	33,54,54	1.73	7 (21%)
9	MES	B	504	-	12,12,12	2.26	1 (8%)	14,16,16	1.99	6 (42%)
10	X0M	B	505	-	14,15,15	0.93	1 (7%)	16,20,20	1.18	2 (12%)
8	GDP	D	501	6	24,30,30	1.18	2 (8%)	31,47,47	1.87	7 (22%)
5	GTP	C	501	6	26,34,34	1.00	1 (3%)	33,54,54	1.70	7 (21%)
11	ACP	F	401	6	27,33,33	1.38	5 (18%)	32,52,52	1.49	4 (12%)

In the following table, the Chirals column lists the number of chiral outliers, the number of chiral centers analysed, the number of these observed in the model and the number defined in the Chemical Component Dictionary. Similar counts are reported in the Torsion and Rings columns. '-' means no outliers of that kind were identified.

Mol	Type	Chain	Res	Link	Chirals	Torsions	Rings
8	GDP	B	501	6	-	5/12/32/32	0/3/3/3
5	GTP	A	501	6	-	8/18/38/38	0/3/3/3
9	MES	B	504	-	-	4/6/14/14	0/1/1/1
10	X0M	B	505	-	-	0/4/13/13	0/2/2/2
8	GDP	D	501	6	-	4/12/32/32	0/3/3/3
5	GTP	C	501	6	-	9/18/38/38	0/3/3/3
11	ACP	F	401	6	-	11/15/38/38	0/3/3/3

All (13) bond length outliers are listed below:

Mol	Chain	Res	Type	Atoms	Z	Observed(Å)	Ideal(Å)
9	B	504	MES	C8-S	-7.54	1.66	1.77
8	D	501	GDP	C6-C5	4.12	1.48	1.41
8	B	501	GDP	C6-C5	3.94	1.48	1.41
5	C	501	GTP	C6-N1	3.35	1.38	1.33
5	A	501	GTP	C6-N1	3.10	1.38	1.33
11	F	401	ACP	PG-O2G	2.95	1.61	1.54
11	F	401	ACP	PG-O3G	2.93	1.61	1.54
11	F	401	ACP	PB-O3A	2.75	1.61	1.58
11	F	401	ACP	C5-C4	2.53	1.47	1.40
8	D	501	GDP	C5-C4	2.45	1.47	1.40
8	B	501	GDP	C5-C4	2.26	1.46	1.40
11	F	401	ACP	PB-O2B	2.23	1.61	1.56
10	B	505	X0M	C7-N1	2.02	1.48	1.44

All (40) bond angle outliers are listed below:

Mol	Chain	Res	Type	Atoms	Z	Observed(°)	Ideal(°)
5	A	501	GTP	N3-C2-N1	-5.37	120.06	127.22
5	C	501	GTP	N3-C2-N1	-5.32	120.12	127.22
8	B	501	GDP	C2-N3-C4	5.03	121.10	115.36
8	D	501	GDP	C2-N3-C4	4.74	120.77	115.36
5	A	501	GTP	C2-N3-C4	4.38	120.35	115.36
8	B	501	GDP	C6-C5-C4	-4.30	116.69	120.80
11	F	401	ACP	PA-O3A-PB	-4.14	119.44	132.56
8	D	501	GDP	C6-N1-C2	4.08	122.41	115.93
5	C	501	GTP	C2-N3-C4	4.03	119.96	115.36
8	D	501	GDP	C5-C6-N1	-4.02	117.94	123.43
8	B	501	GDP	C6-N1-C2	3.94	122.19	115.93
8	D	501	GDP	C6-C5-C4	-3.86	117.11	120.80
9	B	504	MES	C5-N4-C3	3.74	117.24	108.83
8	B	501	GDP	C5-C6-N1	-3.67	118.41	123.43
8	B	501	GDP	N3-C2-N1	-3.59	122.43	127.22
11	F	401	ACP	C3'-C2'-C1'	3.54	106.30	100.98
9	B	504	MES	C6-C5-N4	-3.26	105.17	110.10
8	D	501	GDP	N3-C2-N1	-3.24	122.90	127.22
11	F	401	ACP	N3-C2-N1	-3.15	123.75	128.68
5	C	501	GTP	C5-C6-N1	-3.11	119.18	123.43
5	A	501	GTP	C5-C6-N1	-2.94	119.41	123.43
5	A	501	GTP	PA-O3A-PB	-2.87	122.96	132.83
8	D	501	GDP	PA-O3A-PB	-2.86	123.02	132.83
8	D	501	GDP	C4-C5-N7	-2.78	106.50	109.40
5	C	501	GTP	PA-O3A-PB	-2.76	123.35	132.83
8	B	501	GDP	PA-O3A-PB	-2.75	123.38	132.83
5	A	501	GTP	PB-O3B-PG	-2.70	123.56	132.83
5	C	501	GTP	C6-N1-C2	2.66	120.16	115.93
11	F	401	ACP	C4-C5-N7	-2.62	106.67	109.40
5	A	501	GTP	C6-N1-C2	2.56	119.99	115.93
9	B	504	MES	O2S-S-C8	2.52	109.95	106.92
8	B	501	GDP	C4-C5-N7	-2.51	106.78	109.40
10	B	505	XOM	C9-C3-C2	2.50	122.82	120.32
5	C	501	GTP	PB-O3B-PG	-2.47	124.35	132.83
9	B	504	MES	C7-N4-C5	2.31	117.15	111.23
9	B	504	MES	O1S-S-C8	2.30	109.69	106.92
10	B	505	XOM	C7-C8-C9	-2.26	107.92	109.98
9	B	504	MES	O3S-S-C8	2.14	109.22	105.77
5	C	501	GTP	N2-C2-N1	2.12	120.55	117.25
5	A	501	GTP	N2-C2-N1	2.08	120.49	117.25

There are no chirality outliers.

All (41) torsion outliers are listed below:

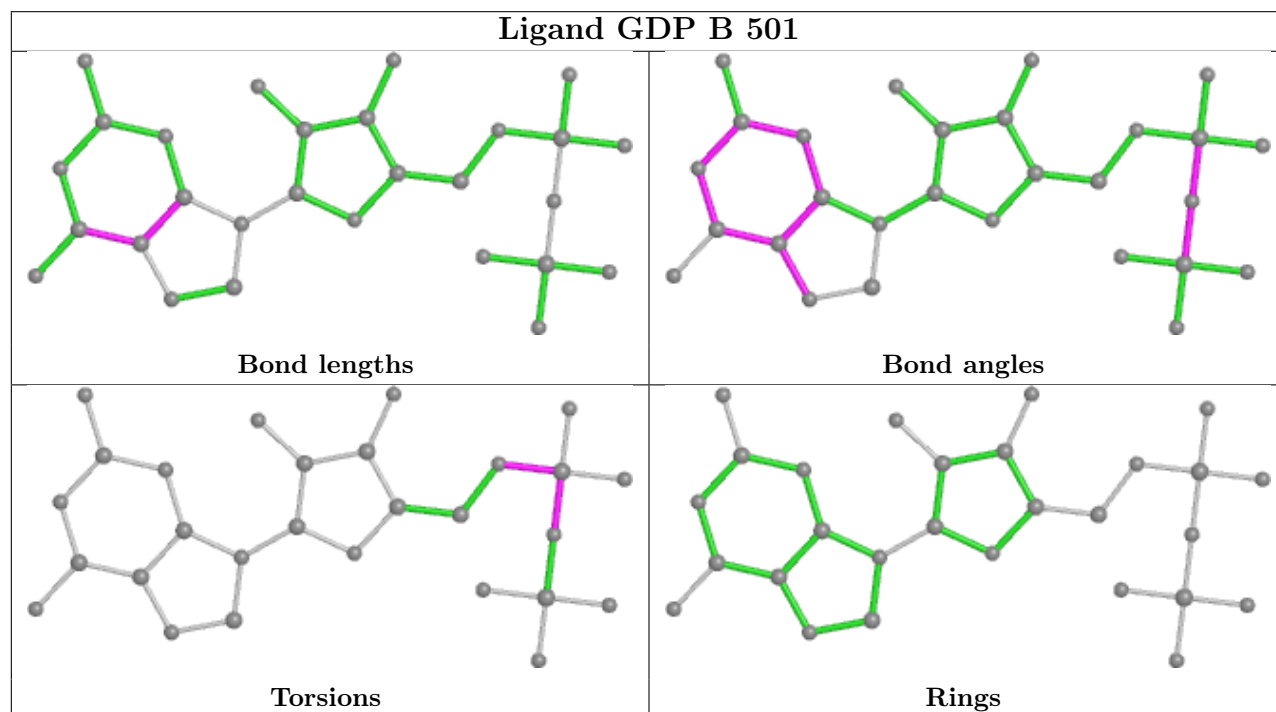
Mol	Chain	Res	Type	Atoms
5	A	501	GTP	C5'-O5'-PA-O1A
5	A	501	GTP	C5'-O5'-PA-O2A
5	C	501	GTP	C5'-O5'-PA-O1A
5	C	501	GTP	C5'-O5'-PA-O2A
8	B	501	GDP	C5'-O5'-PA-O1A
8	B	501	GDP	C5'-O5'-PA-O2A
8	D	501	GDP	C5'-O5'-PA-O1A
8	D	501	GDP	C5'-O5'-PA-O2A
9	B	504	MES	C8-C7-N4-C5
9	B	504	MES	C7-C8-S-O2S
9	B	504	MES	C7-C8-S-O3S
11	F	401	ACP	PB-C3B-PG-O1G
11	F	401	ACP	PB-C3B-PG-O2G
11	F	401	ACP	PB-C3B-PG-O3G
11	F	401	ACP	PG-C3B-PB-O1B
11	F	401	ACP	PG-C3B-PB-O2B
11	F	401	ACP	PG-C3B-PB-O3A
11	F	401	ACP	C5'-O5'-PA-O1A
11	F	401	ACP	C5'-O5'-PA-O2A
5	C	501	GTP	PB-O3B-PG-O1G
11	F	401	ACP	C3'-C4'-C5'-O5'
9	B	504	MES	C7-C8-S-O1S
11	F	401	ACP	O4'-C4'-C5'-O5'
5	C	501	GTP	PB-O3A-PA-O2A
5	A	501	GTP	C4'-C5'-O5'-PA
5	A	501	GTP	PB-O3B-PG-O2G
5	C	501	GTP	PB-O3B-PG-O2G
5	C	501	GTP	PB-O3B-PG-O3G
8	D	501	GDP	PA-O3A-PB-O3B
5	A	501	GTP	C5'-O5'-PA-O3A
5	C	501	GTP	C5'-O5'-PA-O3A
8	B	501	GDP	C5'-O5'-PA-O3A
8	D	501	GDP	C5'-O5'-PA-O3A
11	F	401	ACP	C5'-O5'-PA-O3A
5	A	501	GTP	PB-O3A-PA-O1A
5	A	501	GTP	PB-O3A-PA-O2A
5	C	501	GTP	PB-O3A-PA-O1A
8	B	501	GDP	PB-O3A-PA-O1A
8	B	501	GDP	PB-O3A-PA-O2A
5	C	501	GTP	C4'-C5'-O5'-PA
5	A	501	GTP	PB-O3B-PG-O1G

There are no ring outliers.

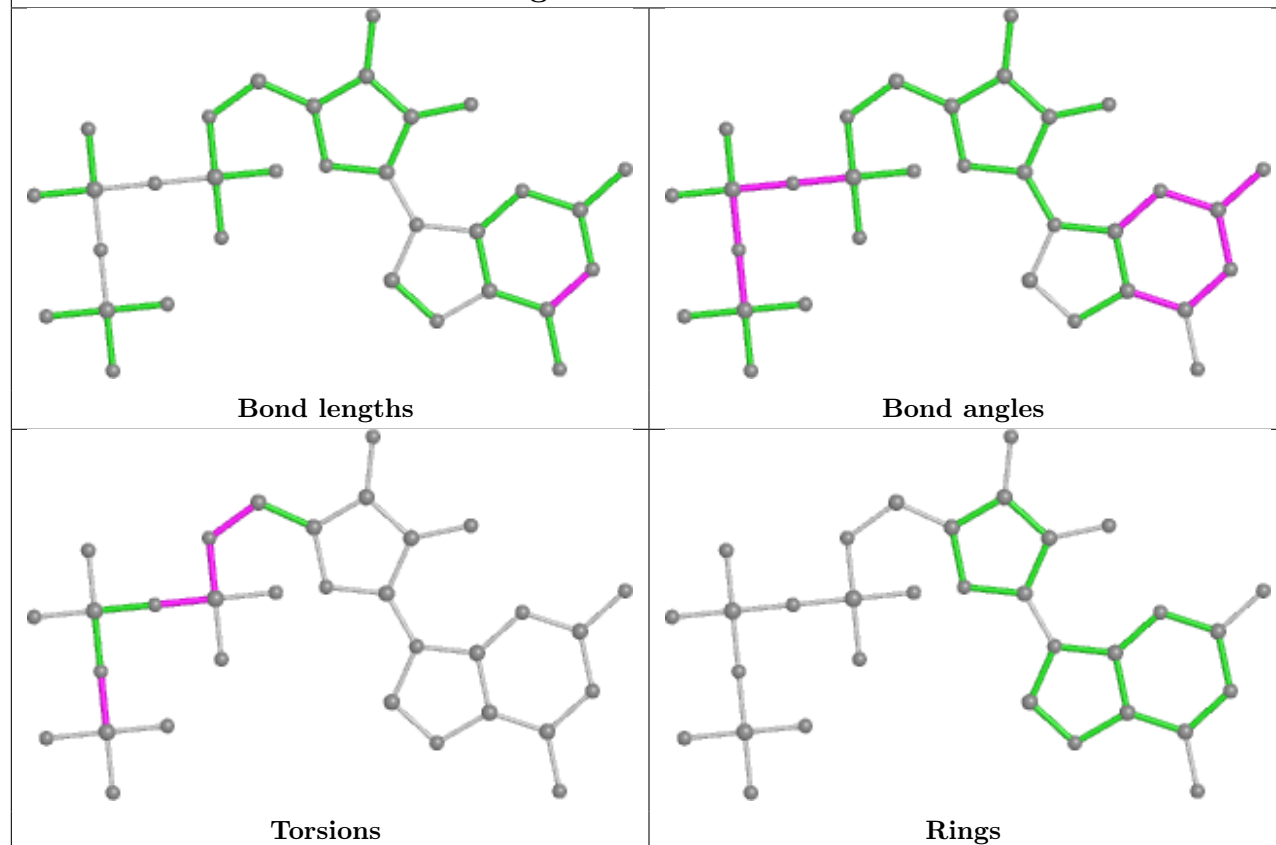
4 monomers are involved in 9 short contacts:

Mol	Chain	Res	Type	Clashes	Symm-Clashes
5	A	501	GTP	1	0
9	B	504	MES	2	0
8	D	501	GDP	1	0
11	F	401	ACP	5	0

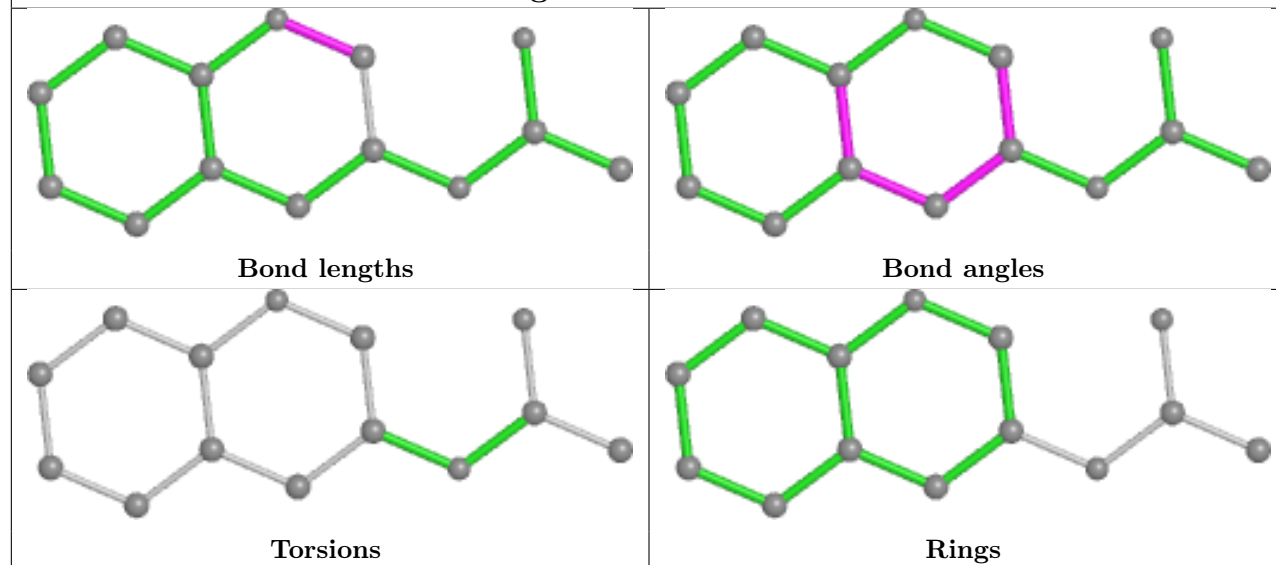
The following is a two-dimensional graphical depiction of Mogul quality analysis of bond lengths, bond angles, torsion angles, and ring geometry for all instances of the Ligand of Interest. In addition, ligands with molecular weight > 250 and outliers as shown on the validation Tables will also be included. For torsion angles, if less than 5% of the Mogul distribution of torsion angles is within 10 degrees of the torsion angle in question, then that torsion angle is considered an outlier. Any bond that is central to one or more torsion angles identified as an outlier by Mogul will be highlighted in the graph. For rings, the root-mean-square deviation (RMSD) between the ring in question and similar rings identified by Mogul is calculated over all ring torsion angles. If the average RMSD is greater than 60 degrees and the minimal RMSD between the ring in question and any Mogul-identified rings is also greater than 60 degrees, then that ring is considered an outlier. The outliers are highlighted in purple. The color gray indicates Mogul did not find sufficient equivalents in the CSD to analyse the geometry.

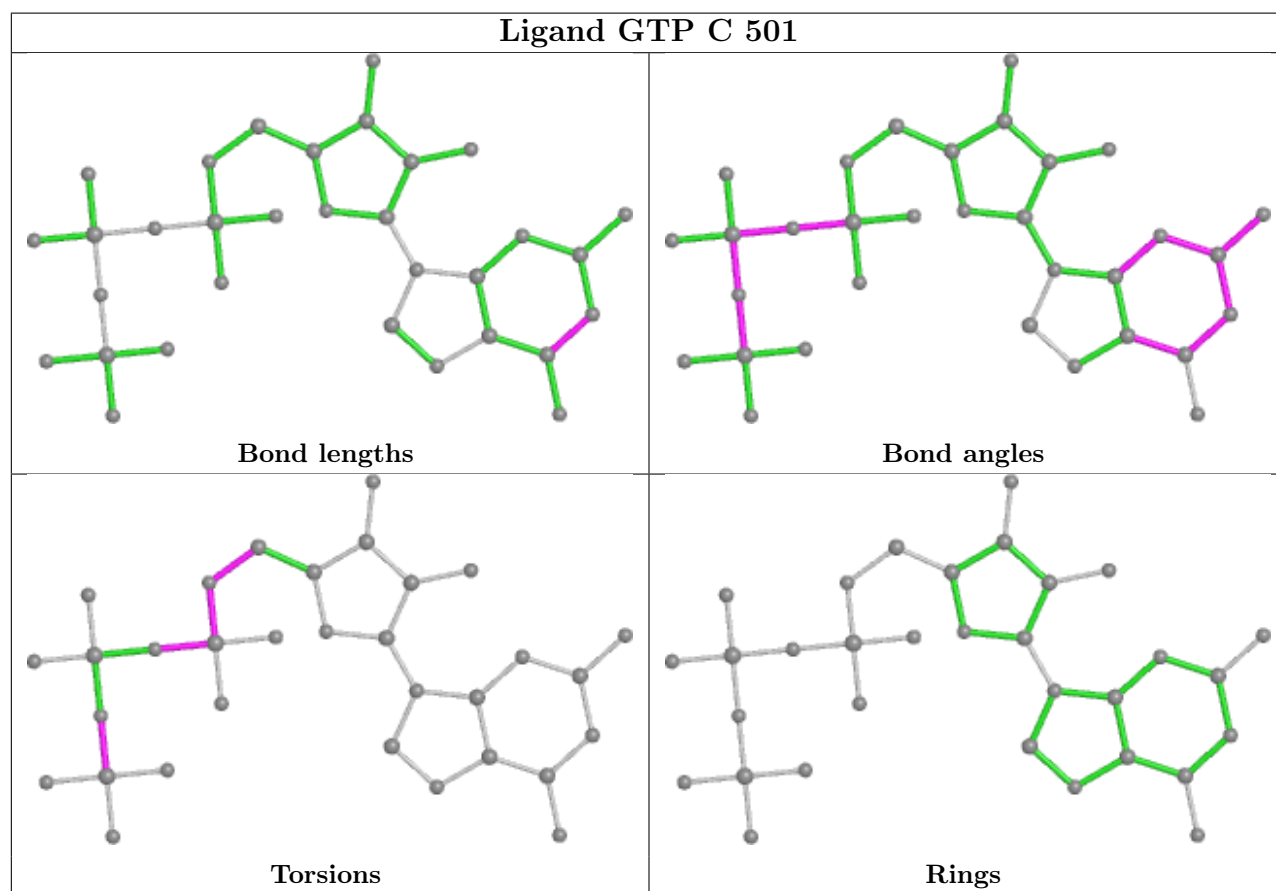
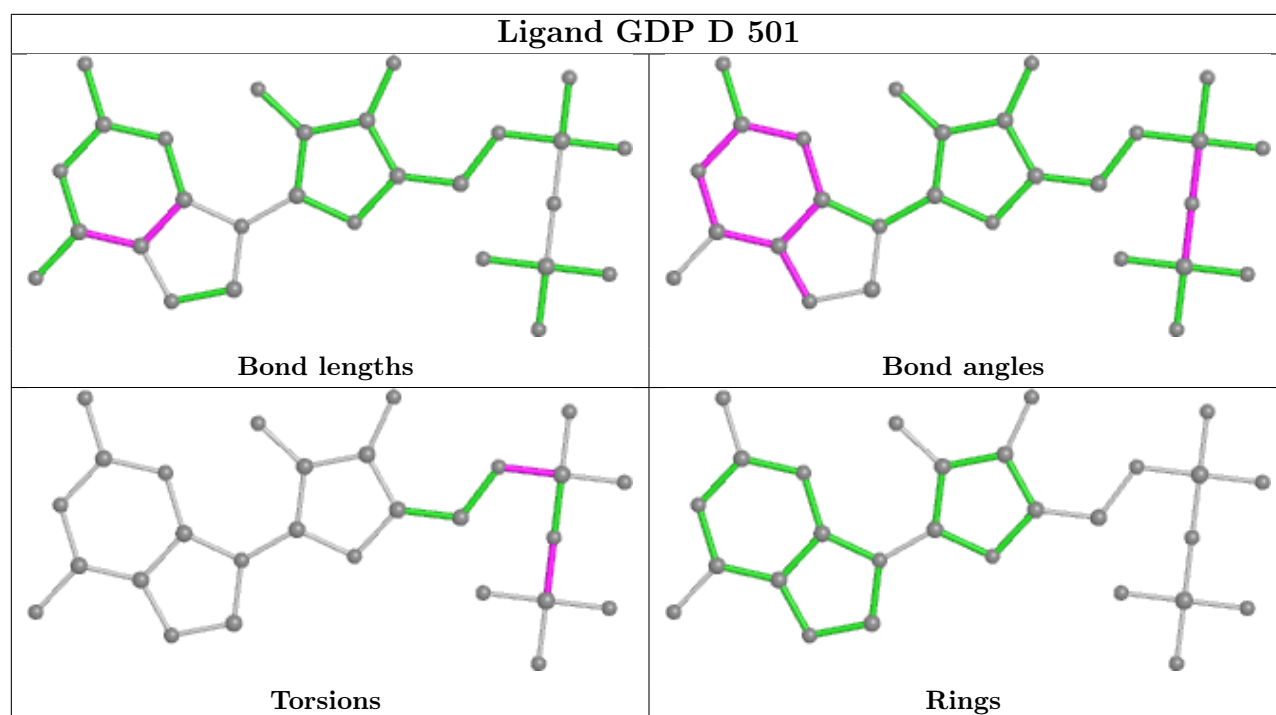


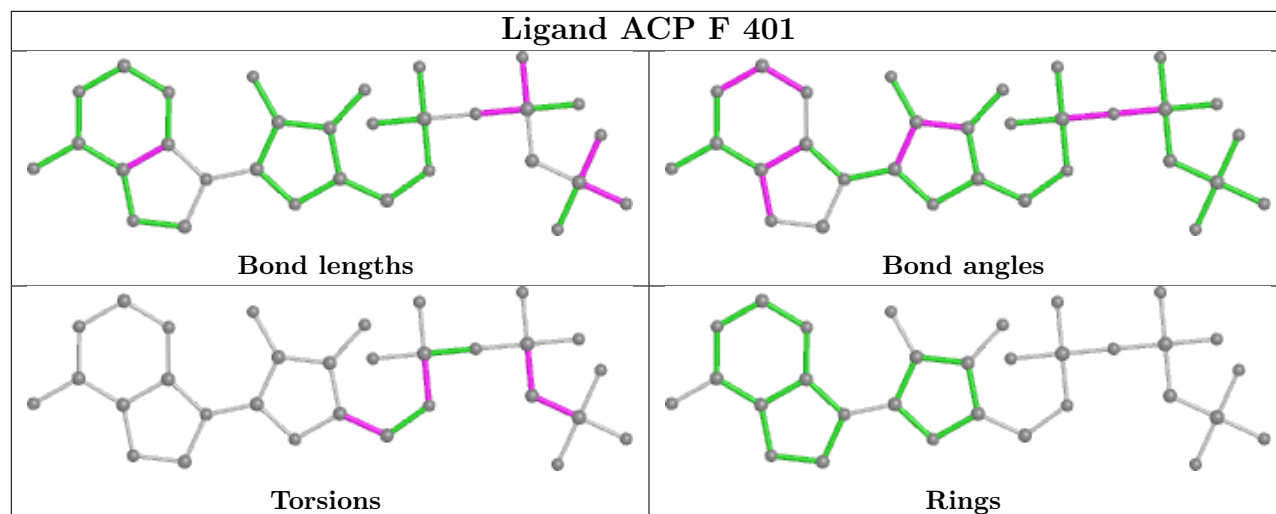
Ligand GTP A 501



Ligand X0M B 505







5.7 Other polymers [i](#)

There are no such residues in this entry.

5.8 Polymer linkage issues [i](#)

There are no chain breaks in this entry.

6 Fit of model and data

6.1 Protein, DNA and RNA chains

In the following table, the column labelled ‘#RSRZ > 2’ contains the number (and percentage) of RSRZ outliers, followed by percent RSRZ outliers for the chain as percentile scores relative to all X-ray entries and entries of similar resolution. The OWAB column contains the minimum, median, 95th percentile and maximum values of the occupancy-weighted average B-factor per residue. The column labelled ‘Q < 0.9’ lists the number of (and percentage) of residues with an average occupancy less than 0.9.

Mol	Chain	Analysed	<RSRZ>	#RSRZ>2	OWAB(Å ²)	Q<0.9
1	A	438/451 (97%)	0.27	14 (3%) 47 50	44, 64, 99, 165	0
1	C	440/451 (97%)	0.25	9 (2%) 65 68	35, 48, 70, 104	0
2	B	425/445 (95%)	0.34	11 (2%) 56 59	35, 60, 106, 136	4 (0%)
2	D	431/445 (96%)	0.30	19 (4%) 34 37	42, 67, 102, 157	4 (0%)
3	E	121/143 (84%)	0.78	12 (9%) 7 7	49, 78, 119, 169	0
4	F	348/384 (90%)	0.59	41 (11%) 4 4	57, 91, 153, 180	0
All	All	2203/2319 (94%)	0.36	106 (4%) 30 33	35, 64, 120, 180	8 (0%)

All (106) RSRZ outliers are listed below:

Mol	Chain	Res	Type	RSRZ
3	E	26	PRO	11.4
3	E	27	PRO	8.7
1	A	179	THR	7.0
2	D	281	GLN	6.9
4	F	103	THR	6.5
3	E	6	MET	6.2
2	D	277	SER	5.4
4	F	173	ILE	5.3
3	E	25	LYS	5.1
2	D	215	ARG	4.9
4	F	243	HIS	4.8
1	A	346	TRP	4.6
1	A	282	TYR	4.5
4	F	169	LEU	4.5
4	F	240	LEU	4.5
2	D	280	SER	4.4
4	F	89	GLU	4.3
2	D	1	MET	4.3
2	D	276	THR	4.1

Continued on next page...

Continued from previous page...

Mol	Chain	Res	Type	RSRZ
3	E	24	LEU	4.1
2	B	284	ARG	4.1
2	B	59	ASN	4.1
2	D	285	ALA	4.0
2	B	337	ASN	3.9
4	F	250	SER	3.9
2	D	282	GLN	3.9
4	F	90	SER	3.8
4	F	104	ASN	3.8
4	F	248	GLU	3.7
2	B	1	MET	3.7
4	F	233	PHE	3.7
4	F	244	CYS	3.7
4	F	135	TYR	3.7
2	B	333	LEU	3.6
4	F	143	GLU	3.6
3	E	22	VAL	3.5
4	F	251	LYS	3.5
4	F	231	ALA	3.4
2	D	278	ARG	3.4
2	B	281	GLN	3.4
4	F	142	ARG	3.3
1	A	340	SER	3.3
1	A	262	TYR	3.2
4	F	379	HIS	3.0
3	E	50	ILE	3.0
4	F	105	LEU	3.0
4	F	179	VAL	2.9
1	C	286	LEU	2.9
2	D	217	LEU	2.9
4	F	137	ARG	2.9
4	F	253	TYR	2.9
1	C	218	ASP	2.9
2	B	437	ASP	2.9
2	B	248	LEU	2.8
2	D	57	THR	2.8
2	D	283	TYR	2.8
2	D	299	LYS	2.8
4	F	131	PHE	2.7
4	F	20	LEU	2.7
4	F	125	THR	2.7
4	F	138	ARG	2.7

Continued on next page...

Continued from previous page...

Mol	Chain	Res	Type	RSRZ
1	A	348	PRO	2.7
1	C	339	ARG	2.6
4	F	161	LEU	2.6
4	F	381	HIS	2.6
1	A	88	HIS	2.6
4	F	234	GLN	2.6
4	F	99	VAL	2.6
1	A	438	ASP	2.5
1	A	285	GLN	2.5
3	E	124	GLN	2.5
1	A	341	ILE	2.5
2	D	218	LYS	2.5
2	D	293	GLN	2.4
4	F	177	GLY	2.4
1	C	302	MET	2.4
1	A	349	THR	2.4
4	F	362	ALA	2.3
4	F	101	TYR	2.3
4	F	249	TYR	2.3
4	F	141	GLY	2.3
4	F	236	LYS	2.3
2	D	83	PHE	2.3
3	E	45	PRO	2.3
1	C	357	TYR	2.3
2	D	284	ARG	2.3
1	C	440	VAL	2.3
4	F	259	GLY	2.2
1	C	308	ARG	2.2
2	B	57	THR	2.2
2	B	318	ILE	2.2
2	D	404	PHE	2.2
1	C	162	GLY	2.2
3	E	17	GLY	2.1
4	F	31	ARG	2.1
1	A	326	LYS	2.1
4	F	306	HIS	2.1
4	F	247	LYS	2.1
3	E	48	GLU	2.0
3	E	9	ILE	2.0
1	C	163	LYS	2.0
1	A	284	GLU	2.0
2	D	279	GLY	2.0

Continued on next page...

Continued from previous page...

Mol	Chain	Res	Type	RSRZ
1	A	372	GLN	2.0
2	B	325	MET	2.0
4	F	372	THR	2.0

6.2 Non-standard residues in protein, DNA, RNA chains [i](#)

There are no non-standard protein/DNA/RNA residues in this entry.

6.3 Carbohydrates [i](#)

There are no monosaccharides in this entry.

6.4 Ligands [i](#)

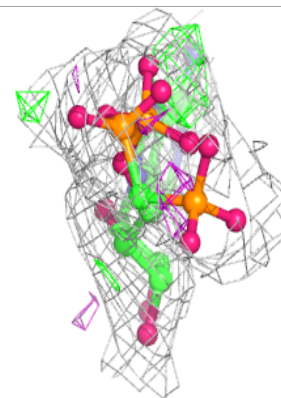
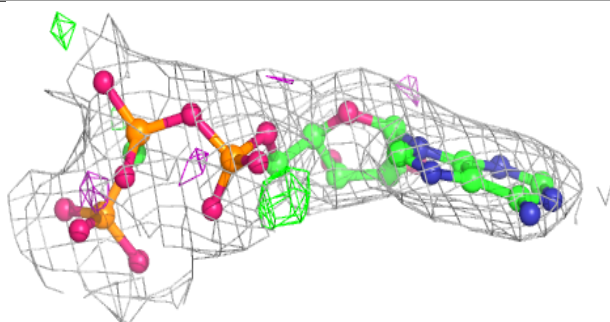
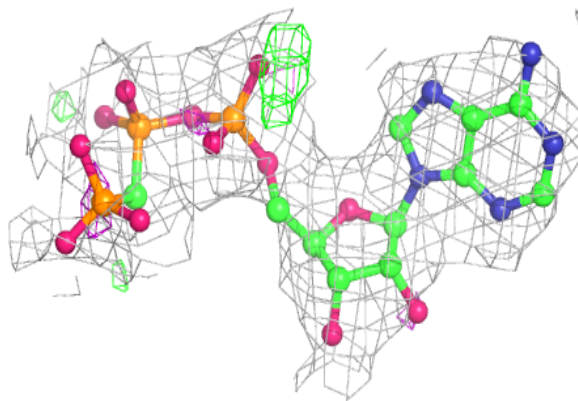
In the following table, the Atoms column lists the number of modelled atoms in the group and the number defined in the chemical component dictionary. The B-factors column lists the minimum, median, 95th percentile and maximum values of B factors of atoms in the group. The column labelled 'Q< 0.9' lists the number of atoms with occupancy less than 0.9.

Mol	Type	Chain	Res	Atoms	RSCC	RSR	B-factors(Å ²)	Q<0.9
7	CA	B	503	1/1	0.77	0.09	109,109,109,109	0
7	CA	A	504	1/1	0.84	0.15	93,93,93,93	0
9	MES	B	504	12/12	0.84	0.21	85,92,107,113	0
11	ACP	F	401	31/31	0.84	0.15	93,101,108,111	0
6	MG	D	502	1/1	0.85	0.14	62,62,62,62	0
7	CA	A	503	1/1	0.89	0.07	79,79,79,79	0
6	MG	C	502	1/1	0.92	0.13	40,40,40,40	0
6	MG	A	502	1/1	0.93	0.10	45,45,45,45	0
8	GDP	D	501	28/28	0.94	0.15	59,64,71,76	0
6	MG	F	402	1/1	0.95	0.07	93,93,93,93	0
5	GTP	A	501	32/32	0.96	0.16	38,47,50,54	0
10	X0M	B	505	14/14	0.97	0.16	40,48,54,62	0
6	MG	B	502	1/1	0.98	0.19	33,33,33,33	0
7	CA	C	503	1/1	0.98	0.09	61,61,61,61	0
5	GTP	C	501	32/32	0.98	0.15	36,39,42,44	0
8	GDP	B	501	28/28	0.99	0.15	36,41,47,52	0

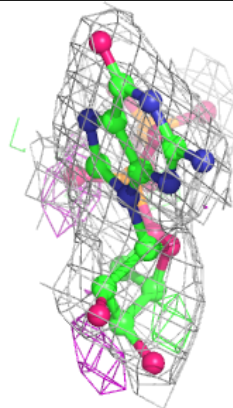
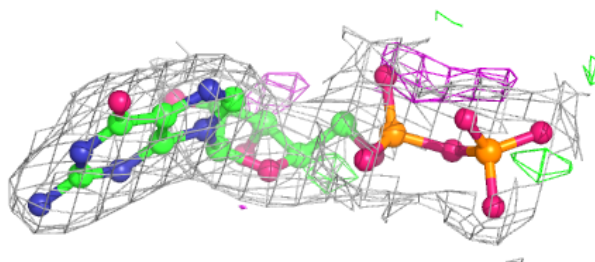
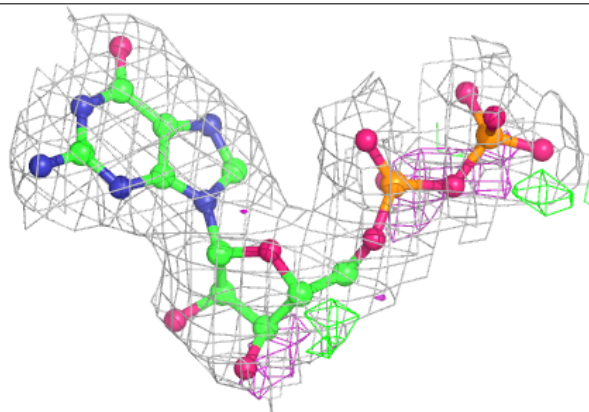
The following is a graphical depiction of the model fit to experimental electron density of all instances of the Ligand of Interest. In addition, ligands with molecular weight > 250 and outliers as shown on the geometry validation Tables will also be included. Each fit is shown from different orientation to approximate a three-dimensional view.

Electron density around ACP F 401:

$2mF_o-DF_c$ (at 0.7 rmsd) in gray
 mF_o-DF_c (at 3 rmsd) in purple (negative)
and green (positive)

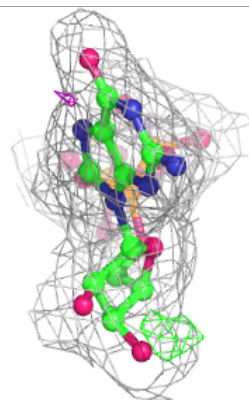
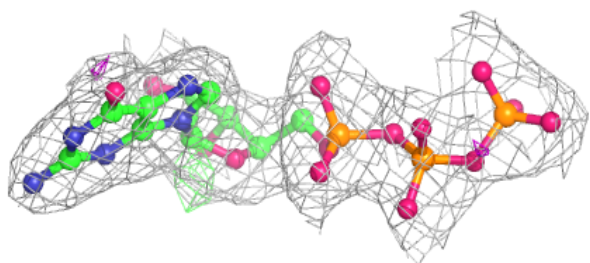
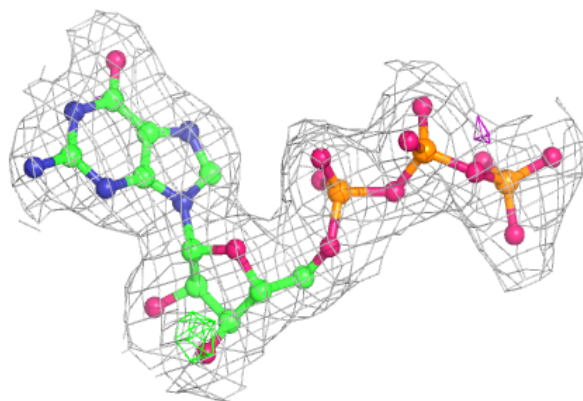
**Electron density around GDP D 501:**

$2mF_o-DF_c$ (at 0.7 rmsd) in gray
 mF_o-DF_c (at 3 rmsd) in purple (negative)
and green (positive)

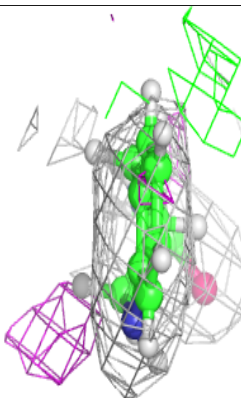
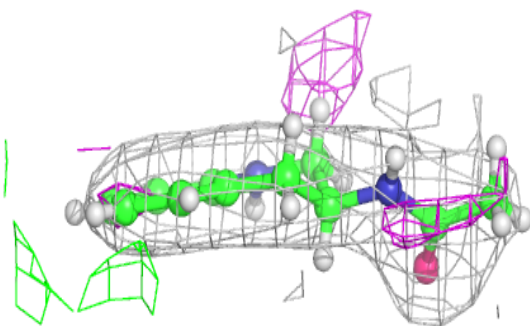
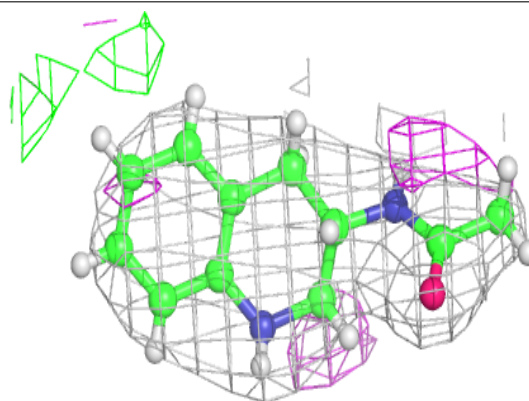


Electron density around GTP A 501:

$2mF_o-DF_c$ (at 0.7 rmsd) in gray
 mF_o-DF_c (at 3 rmsd) in purple (negative)
and green (positive)

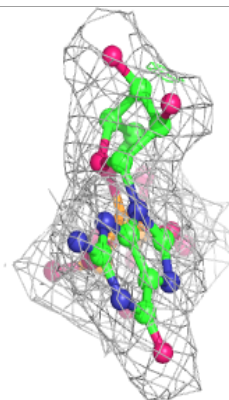
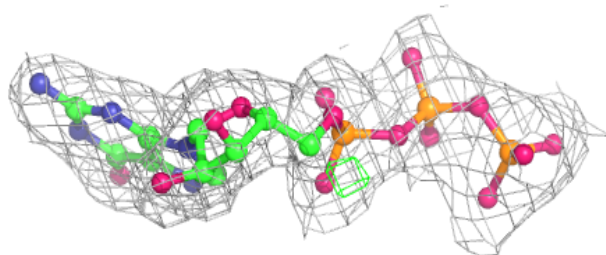
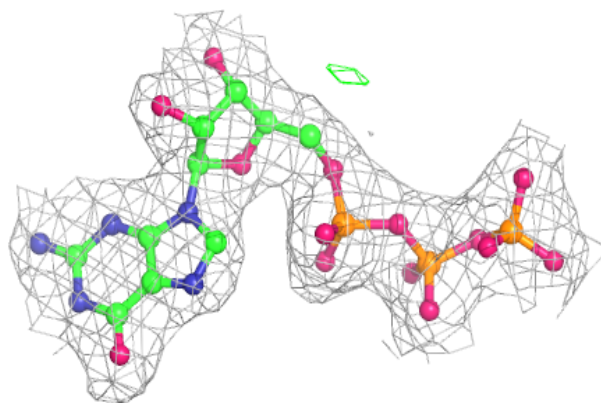
**Electron density around XOM B 505:**

$2mF_o-DF_c$ (at 0.7 rmsd) in gray
 mF_o-DF_c (at 3 rmsd) in purple (negative)
and green (positive)

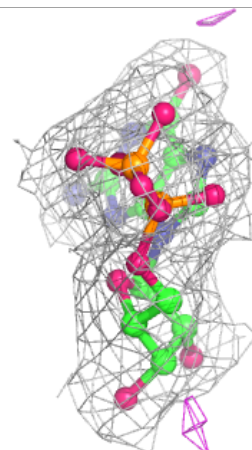
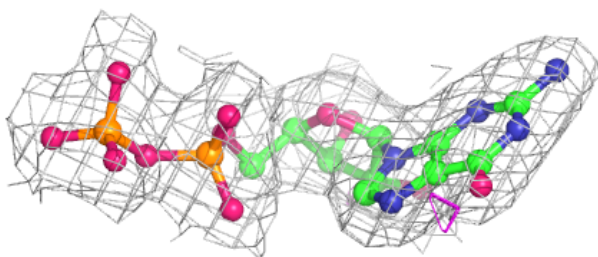
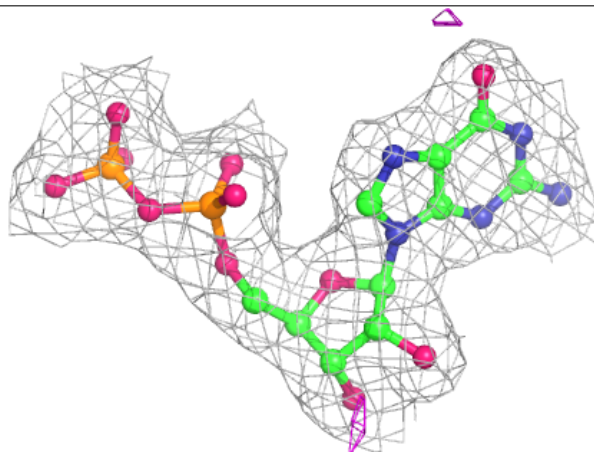


Electron density around GTP C 501:

$2mF_o - DF_c$ (at 0.7 rmsd) in gray
 $mF_o - DF_c$ (at 3 rmsd) in purple (negative)
and green (positive)

**Electron density around GDP B 501:**

$2mF_o - DF_c$ (at 0.7 rmsd) in gray
 $mF_o - DF_c$ (at 3 rmsd) in purple (negative)
and green (positive)



6.5 Other polymers [i](#)

There are no such residues in this entry.