



# Full wwPDB X-ray Structure Validation Report ⓘ

Aug 29, 2020 – 10:32 PM BST

PDB ID : 6S7W  
Title : Fumarate hydratase of Mycobacterium tuberculosis in complex with formate and allosteric modulator N-(5-(Azepan-1-ylsulfonyl)-2-methoxyphenyl)-2-(quinolin-4-yl)acetamide  
Authors : Whitehouse, A.J.; Libardo, M.D.; Kasbekar, M.; Brear, P.; Fischer, G.; Thomas, C.J.; Barry, C.E.; Boshoff, H.I.; Coyne, A.G.; Abell, C.  
Deposited on : 2019-07-07  
Resolution : 1.44 Å(reported)

This is a Full wwPDB X-ray Structure Validation Report for a publicly released PDB entry.

We welcome your comments at [validation@mail.wwpdb.org](mailto:validation@mail.wwpdb.org)

A user guide is available at

<https://www.wwpdb.org/validation/2017/XrayValidationReportHelp>

with specific help available everywhere you see the ⓘ symbol.

---

The following versions of software and data (see [references ⓘ](#)) were used in the production of this report:

MolProbity	:	4.02b-467
Mogul	:	1.8.5 (274361), CSD as541be (2020)
Xtriage (Phenix)	:	1.13
EDS	:	2.13
buster-report	:	1.1.7 (2018)
Percentile statistics	:	20191225.v01 (using entries in the PDB archive December 25th 2019)
Refmac	:	5.8.0158
CCP4	:	7.0.044 (Gargrove)
Ideal geometry (proteins)	:	Engh & Huber (2001)
Ideal geometry (DNA, RNA)	:	Parkinson et al. (1996)
Validation Pipeline (wwPDB-VP)	:	2.13

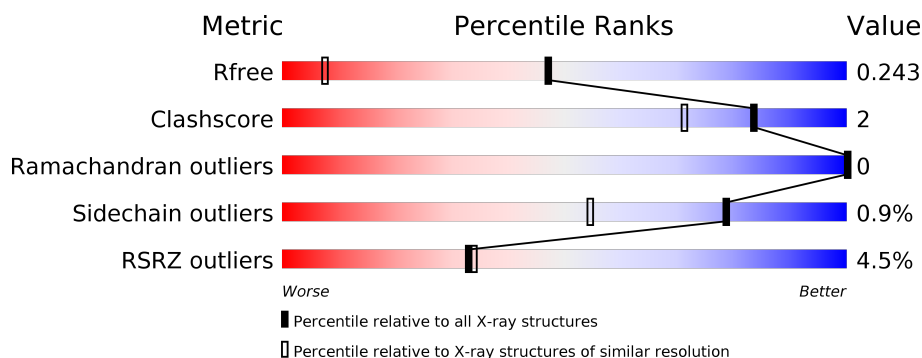
# 1 Overall quality at a glance ⓘ

The following experimental techniques were used to determine the structure:

## *X-RAY DIFFRACTION*

The reported resolution of this entry is 1.44 Å.

Percentile scores (ranging between 0-100) for global validation metrics of the entry are shown in the following graphic. The table shows the number of entries on which the scores are based.



Metric	Whole archive (#Entries)	Similar resolution (#Entries, resolution range(Å))
$R_{free}$	130704	2021 (1.46-1.42)
Clashscore	141614	2086 (1.46-1.42)
Ramachandran outliers	138981	2047 (1.46-1.42)
Sidechain outliers	138945	2047 (1.46-1.42)
RSRZ outliers	127900	1993 (1.46-1.42)

The table below summarises the geometric issues observed across the polymeric chains and their fit to the electron density. The red, orange, yellow and green segments on the lower bar indicate the fraction of residues that contain outliers for  $\geq 3$ , 2, 1 and 0 types of geometric quality criteria respectively. A grey segment represents the fraction of residues that are not modelled. The numeric value for each fraction is indicated below the corresponding segment, with a dot representing fractions  $\leq 5\%$ . The upper red bar (where present) indicates the fraction of residues that have poor fit to the electron density. The numeric value is given above the bar.

Mol	Chain	Length	Quality of chain
1	A	474	<div> <div>4%</div> <div> <div></div> <div>89%</div> <div>5%</div> <div>5%</div> </div> </div>
1	B	474	<div> <div>6%</div> <div> <div></div> <div>91%</div> <div>6%</div> <div>•</div> </div> </div>
1	C	474	<div> <div>4%</div> <div> <div></div> <div>89%</div> <div>6%</div> <div>5%</div> </div> </div>
1	D	474	<div> <div>4%</div> <div> <div></div> <div>90%</div> <div>5%</div> <div>5%</div> </div> </div>

## 2 Entry composition [i](#)

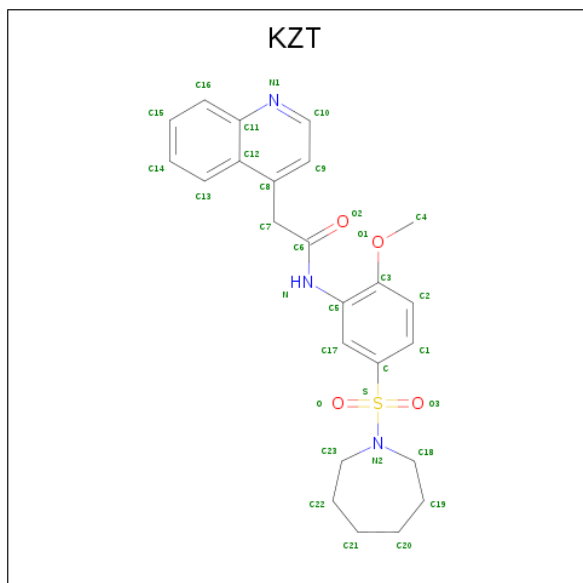
There are 5 unique types of molecules in this entry. The entry contains 15336 atoms, of which 0 are hydrogens and 0 are deuteriums.

In the tables below, the ZeroOcc column contains the number of atoms modelled with zero occupancy, the AltConf column contains the number of residues with at least one atom in alternate conformation and the Trace column contains the number of residues modelled with at most 2 atoms.

- Molecule 1 is a protein called Fumarate hydratase class II.

Mol	Chain	Residues	Atoms					ZeroOcc	AltConf	Trace
1	A	450	Total	C	N	O	S	0	13	0
			3465	2159	633	661	12			
1	B	458	Total	C	N	O	S	0	15	0
			3517	2189	639	675	14			
1	C	451	Total	C	N	O	S	0	15	0
			3477	2163	635	667	12			
1	D	448	Total	C	N	O	S	0	11	0
			3423	2129	624	658	12			

- Molecule 2 is {N}-[5-(azepan-1-ylsulfonyl)-2-methoxy-phenyl]-2-quinolin-4-yl-ethanamide (three-letter code: KZT) (formula: C<sub>24</sub>H<sub>27</sub>N<sub>3</sub>O<sub>4</sub>S) (labeled as "Ligand of Interest" by author).



Mol	Chain	Residues	Atoms					ZeroOcc	AltConf
2	A	1	Total	C	N	O	S	0	0
			32	24	3	4	1		

*Continued on next page...*

Continued from previous page...

Mol	Chain	Residues	Atoms					ZeroOcc	AltConf
2	A	1	Total	C	N	O	S	0	0
			32	24	3	4	1		

- Molecule 3 is FORMIC ACID (three-letter code: FMT) (formula: CH<sub>2</sub>O<sub>2</sub>).



Mol	Chain	Residues	Atoms			ZeroOcc	AltConf
3	B	1	Total	C	O	0	0
			3	1	2		

- Molecule 4 is MAGNESIUM ION (three-letter code: MG) (formula: Mg).

Mol	Chain	Residues	Atoms		ZeroOcc	AltConf
4	B	1	Total	Mg	0	0
			1	1		

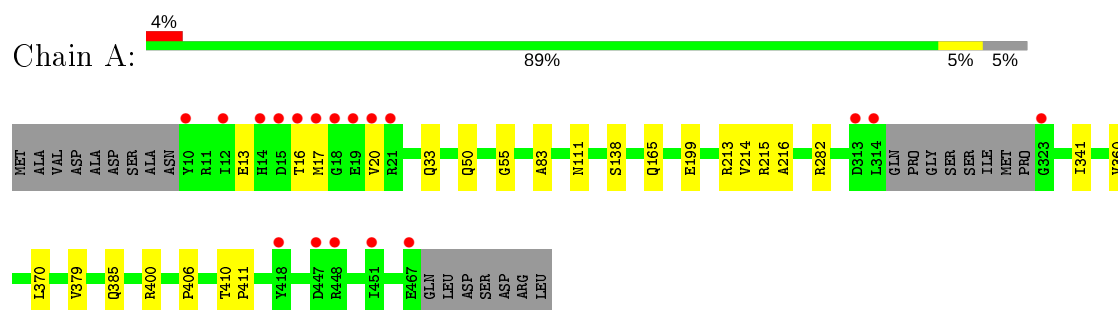
- Molecule 5 is water.

Mol	Chain	Residues	Atoms		ZeroOcc	AltConf
5	A	391	Total	O	0	0
			391	391		
5	B	347	Total	O	0	0
			347	347		
5	C	308	Total	O	0	0
			308	308		
5	D	340	Total	O	0	0
			340	340		

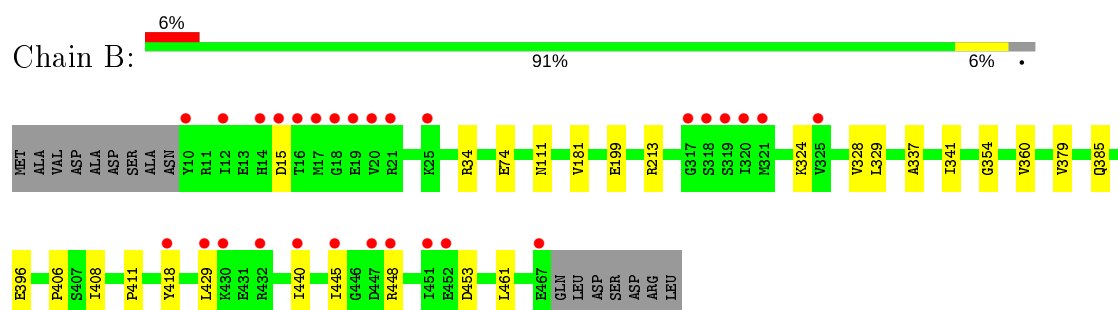
### 3 Residue-property plots [i](#)

These plots are drawn for all protein, RNA, DNA and oligosaccharide chains in the entry. The first graphic for a chain summarises the proportions of the various outlier classes displayed in the second graphic. The second graphic shows the sequence view annotated by issues in geometry and electron density. Residues are color-coded according to the number of geometric quality criteria for which they contain at least one outlier: green = 0, yellow = 1, orange = 2 and red = 3 or more. A red dot above a residue indicates a poor fit to the electron density ( $RSRZ > 2$ ). Stretches of 2 or more consecutive residues without any outlier are shown as a green connector. Residues present in the sample, but not in the model, are shown in grey.

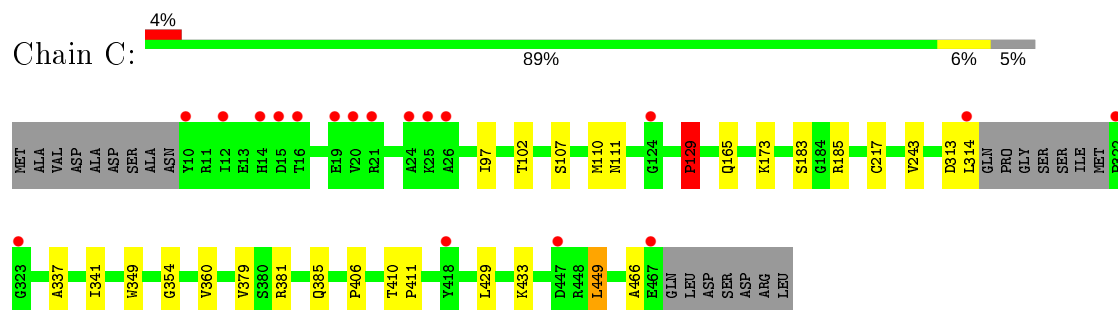
#### • Molecule 1: Fumarate hydratase class II



#### • Molecule 1: Fumarate hydratase class II

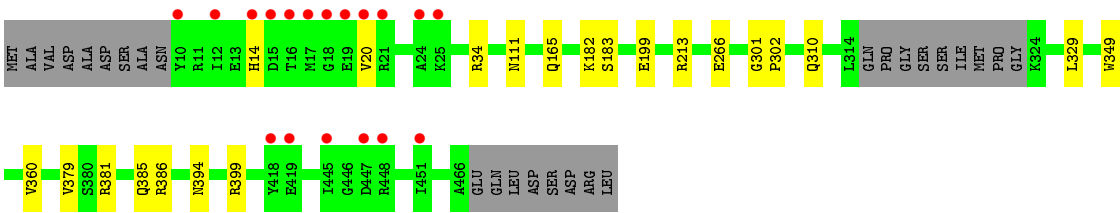


#### • Molecule 1: Fumarate hydratase class II



#### • Molecule 1: Fumarate hydratase class II





## 4 Data and refinement statistics

Property	Value	Source
Space group	C 1 2 1	Depositor
Cell constants a, b, c, $\alpha$ , $\beta$ , $\gamma$	175.68Å 96.96Å 124.74Å 90.00° 102.71° 90.00°	Depositor
Resolution (Å)	84.53 – 1.44 84.39 – 1.44	Depositor EDS
% Data completeness (in resolution range)	94.6 (84.53-1.44) 94.6 (84.39-1.44)	Depositor EDS
$R_{merge}$	0.13	Depositor
$R_{sym}$	(Not available)	Depositor
$\langle I/\sigma(I) \rangle$ <sup>1</sup>	1.05 (at 1.43Å)	Xtriage
Refinement program	REFMAC 5.8.0238	Depositor
R, $R_{free}$	0.224 , 0.243 0.223 , 0.243	Depositor DCC
$R_{free}$ test set	17525 reflections (4.99%)	wwPDB-VP
Wilson B-factor (Å <sup>2</sup> )	11.3	Xtriage
Anisotropy	0.030	Xtriage
Bulk solvent $k_{sol}$ (e/Å <sup>3</sup> ), $B_{sol}$ (Å <sup>2</sup> )	0.34 , 39.6	EDS
L-test for twinning <sup>2</sup>	$\langle  L  \rangle = 0.49$ , $\langle L^2 \rangle = 0.32$	Xtriage
Estimated twinning fraction	No twinning to report.	Xtriage
$F_o, F_c$ correlation	0.94	EDS
Total number of atoms	15336	wwPDB-VP
Average B, all atoms (Å <sup>2</sup> )	23.0	wwPDB-VP

Xtriage's analysis on translational NCS is as follows: *The largest off-origin peak in the Patterson function is 5.36% of the height of the origin peak. No significant pseudotranslation is detected.*

<sup>1</sup>Intensities estimated from amplitudes.

<sup>2</sup>Theoretical values of  $\langle |L| \rangle$ ,  $\langle L^2 \rangle$  for acentric reflections are 0.5, 0.333 respectively for untwinned datasets, and 0.375, 0.2 for perfectly twinned datasets.

## 5 Model quality [i](#)

### 5.1 Standard geometry [i](#)

Bond lengths and bond angles in the following residue types are not validated in this section: FMT, MG, KZT

The Z score for a bond length (or angle) is the number of standard deviations the observed value is removed from the expected value. A bond length (or angle) with  $|Z| > 5$  is considered an outlier worth inspection. RMSZ is the root-mean-square of all Z scores of the bond lengths (or angles).

Mol	Chain	Bond lengths		Bond angles	
		RMSZ	# Z  >5	RMSZ	# Z  >5
1	A	0.79	1/3515 (0.0%)	0.88	2/4774 (0.0%)
1	B	0.80	2/3566 (0.1%)	0.87	2/4845 (0.0%)
1	C	0.82	1/3527 (0.0%)	0.88	1/4789 (0.0%)
1	D	0.78	2/3469 (0.1%)	0.91	5/4713 (0.1%)
All	All	0.80	6/14077 (0.0%)	0.89	10/19121 (0.1%)

Chiral center outliers are detected by calculating the chiral volume of a chiral center and verifying if the center is modelled as a planar moiety or with the opposite hand. A planarity outlier is detected by checking planarity of atoms in a peptide group, atoms in a mainchain group or atoms of a sidechain that are expected to be planar.

Mol	Chain	#Chirality outliers	#Planarity outliers
1	C	0	4
1	D	0	3
All	All	0	7

All (6) bond length outliers are listed below:

Mol	Chain	Res	Type	Atoms	Z	Observed(Å)	Ideal(Å)
1	C	129	PRO	N-CA	12.40	1.68	1.47
1	D	199	GLU	CD-OE1	-7.35	1.17	1.25
1	B	199	GLU	CD-OE1	-6.46	1.18	1.25
1	B	396	GLU	CD-OE1	5.68	1.31	1.25
1	D	266	GLU	CD-OE2	5.46	1.31	1.25
1	A	199	GLU	CD-OE2	-5.05	1.20	1.25

All (10) bond angle outliers are listed below:

Mol	Chain	Res	Type	Atoms	Z	Observed(°)	Ideal(°)
1	D	381	ARG	NE-CZ-NH1	10.80	125.70	120.30

*Continued on next page...*



*Continued from previous page...*

Mol	Chain	Res	Type	Atoms	Z	Observed(°)	Ideal(°)
1	D	381	ARG	NE-CZ-NH2	-9.65	115.47	120.30
1	D	213	ARG	NE-CZ-NH2	-6.55	117.02	120.30
1	A	213	ARG	NE-CZ-NH2	-6.48	117.06	120.30
1	D	399	ARG	NE-CZ-NH2	6.26	123.43	120.30
1	D	399	ARG	NE-CZ-NH1	-6.16	117.22	120.30
1	A	213	ARG	NE-CZ-NH1	5.91	123.25	120.30
1	B	213	ARG	NE-CZ-NH2	-5.73	117.44	120.30
1	C	185	ARG	CG-CD-NE	-5.46	100.33	111.80
1	B	213	ARG	NE-CZ-NH1	5.46	123.03	120.30

There are no chirality outliers.

All (7) planarity outliers are listed below:

Mol	Chain	Res	Type	Group
1	C	110	MET	Mainchain
1	C	129	PRO	Mainchain
1	C	183[A]	SER	Mainchain
1	D	182	LYS	Mainchain
1	D	183[A]	SER	Mainchain
1	D	183[B]	SER	Mainchain

## 5.2 Too-close contacts

In the following table, the Non-H and H(model) columns list the number of non-hydrogen atoms and hydrogen atoms in the chain respectively. The H(added) column lists the number of hydrogen atoms added and optimized by MolProbity. The Clashes column lists the number of clashes within the asymmetric unit, whereas Symm-Clashes lists symmetry related clashes.

Mol	Chain	Non-H	H(model)	H(added)	Clashes	Symm-Clashes
1	A	3465	0	3502	20	0
1	B	3517	0	3555	17	0
1	C	3477	0	3512	23	0
1	D	3423	0	3451	9	0
2	A	64	0	0	2	0
3	B	3	0	1	0	0
4	B	1	0	0	0	0
5	A	391	0	0	5	0
5	B	347	0	0	5	0
5	C	308	0	0	6	0
5	D	340	0	0	3	0
All	All	15336	0	14021	66	0

The all-atom clashscore is defined as the number of clashes found per 1000 atoms (including hydrogen atoms). The all-atom clashscore for this structure is 2.

All (66) close contacts within the same asymmetric unit are listed below, sorted by their clash magnitude.

Atom-1	Atom-2	Interatomic distance (Å)	Clash overlap (Å)
1:C:129:PRO:CA	1:C:129:PRO:N	1.68	1.41
1:A:215[B]:ARG:CA	1:A:216:ALA:N	2.61	0.64
1:B:181[B]:VAL:CG2	1:B:461:LEU:HD13	2.27	0.63
1:C:360:VAL:HG22	5:C:694:HOH:O	1.98	0.63
1:A:215[A]:ARG:HD2	5:A:601:HOH:O	1.98	0.62
1:A:360:VAL:HG22	5:A:836:HOH:O	1.99	0.61
1:D:360:VAL:HG22	5:D:694:HOH:O	2.00	0.61
1:C:449:LEU:HD23	1:C:449:LEU:N	2.16	0.60
1:A:214:VAL:C	1:A:215[B]:ARG:CA	2.70	0.59
1:A:385:GLN:NE2	5:A:607:HOH:O	2.38	0.56
1:C:406:PRO:HD2	5:C:568:HOH:O	2.05	0.56
1:D:310[A]:GLN:HE21	1:D:394:ASN:HD21	1.54	0.56
1:A:400[B]:ARG:HD2	2:A:501:KZT:C20	2.37	0.55
1:A:341[B]:ILE:HD13	1:D:349:TRP:CH2	2.42	0.55
1:C:466:ALA:HA	5:C:759:HOH:O	2.07	0.55
1:B:360:VAL:HG22	5:B:822:HOH:O	2.08	0.54
1:C:129:PRO:C	1:C:129:PRO:N	2.55	0.54
1:A:138:SER:HB2	5:A:740:HOH:O	2.09	0.53
1:B:385:GLN:NE2	5:B:605:HOH:O	2.42	0.53
1:B:74:GLU:HG3	5:B:684:HOH:O	2.07	0.53
1:C:449:LEU:CD2	1:C:449:LEU:N	2.73	0.52
1:A:400[A]:ARG:HD3	2:A:501:KZT:C20	2.40	0.52
1:B:181[B]:VAL:CG2	1:B:461:LEU:CD1	2.89	0.50
1:C:313:ASP:O	1:C:314:LEU:HD23	2.11	0.50
1:C:165:GLN:OE1	1:C:381:ARG:NH1	2.42	0.50
1:C:406:PRO:HG2	1:C:429:LEU:HD11	1.95	0.49
1:B:181[B]:VAL:HG23	1:B:461:LEU:HD13	1.93	0.49
1:C:449:LEU:HD23	1:C:449:LEU:H	1.76	0.49
1:B:406:PRO:HG3	1:B:429[B]:LEU:HG	1.95	0.48
1:C:337:ALA:O	1:C:341:ILE:HD12	2.14	0.48
1:C:165:GLN:NE2	1:C:385:GLN:HG3	2.28	0.47
1:B:448:ARG:HB3	5:B:601:HOH:O	2.13	0.47
1:C:165:GLN:HE22	1:C:385:GLN:CG	2.28	0.47
1:D:165:GLN:NE2	1:D:385:GLN:OE1	2.48	0.47
1:D:14:HIS:CD2	1:D:14:HIS:N	2.83	0.46
1:B:324:LYS:HG3	5:D:565:HOH:O	2.16	0.46
1:A:410:THR:N	1:A:411:PRO:HD2	2.31	0.46

*Continued on next page...*

Continued from previous page...

Atom-1	Atom-2	Interatomic distance (Å)	Clash overlap (Å)
1:D:20:VAL:HG22	1:D:34:ARG:CZ	2.45	0.45
1:B:341[A]:ILE:HD13	1:C:349:TRP:CH2	2.52	0.45
1:A:16:THR:HG23	1:A:17:MET:HG2	1.99	0.45
1:C:243[B]:VAL:HG23	5:C:746:HOH:O	2.16	0.45
1:A:165:GLN:NE2	1:A:385:GLN:HG3	2.32	0.45
1:C:97:ILE:HD13	1:C:107:SER:HB3	1.98	0.45
1:A:20:VAL:HG13	1:A:20:VAL:O	2.17	0.45
1:A:50[C]:GLN:HG2	1:A:370:LEU:CD1	2.47	0.45
1:B:440:ILE:HG12	1:B:445:ILE:HD11	1.99	0.44
1:A:20:VAL:HG22	1:A:33:GLN:HG2	1.99	0.44
1:B:15:ASP:HB3	1:B:34:ARG:HH21	1.83	0.44
1:C:433:LYS:HE2	5:C:605:HOH:O	2.17	0.44
1:D:386:ARG:HD3	5:D:568:HOH:O	2.18	0.44
1:B:408:ILE:O	1:B:411:PRO:HD2	2.18	0.43
1:B:337:ALA:O	1:B:341[B]:ILE:HD13	2.17	0.43
1:D:301:GLY:HA3	1:D:302:PRO:HA	1.81	0.43
1:C:165:GLN:NE2	1:C:385:GLN:CG	2.82	0.42
1:C:173[A]:LYS:HA	1:C:173[A]:LYS:HD3	1.67	0.42
1:A:165:GLN:HE21	1:A:385:GLN:HG3	1.85	0.42
1:A:406:PRO:HD2	5:A:721:HOH:O	2.20	0.41
1:C:410:THR:N	1:C:411:PRO:HD2	2.35	0.41
1:C:354:GLY:HA2	5:C:694:HOH:O	2.19	0.41
1:B:354:GLY:HA2	5:B:822:HOH:O	2.19	0.41
1:A:55:GLY:O	1:A:83:ALA:HB1	2.19	0.41
1:B:328:VAL:HG12	1:C:102:THR:HG23	2.02	0.41
1:A:282:ARG:HG2	1:A:341[A]:ILE:HD13	2.03	0.41
1:B:181[B]:VAL:HG21	1:B:461:LEU:HA	2.03	0.41
1:D:329:LEU:HA	1:D:329:LEU:HD23	1.98	0.41
1:A:13:GLU:HB2	1:A:20:VAL:HG13	2.02	0.40

There are no symmetry-related clashes.

## 5.3 Torsion angles ⓘ

### 5.3.1 Protein backbone ⓘ

In the following table, the Percentiles column shows the percent Ramachandran outliers of the chain as a percentile score with respect to all X-ray entries followed by that with respect to entries of similar resolution.

The Analysed column shows the number of residues for which the backbone conformation was analysed, and the total number of residues.

Mol	Chain	Analysed	Favoured	Allowed	Outliers	Percentiles	
1	A	460/474 (97%)	453 (98%)	7 (2%)	0	100	100
1	B	471/474 (99%)	460 (98%)	11 (2%)	0	100	100
1	C	462/474 (98%)	452 (98%)	10 (2%)	0	100	100
1	D	455/474 (96%)	447 (98%)	8 (2%)	0	100	100
All	All	1848/1896 (98%)	1812 (98%)	36 (2%)	0	100	100

There are no Ramachandran outliers to report.

### 5.3.2 Protein sidechains ⓘ

In the following table, the Percentiles column shows the percent sidechain outliers of the chain as a percentile score with respect to all X-ray entries followed by that with respect to entries of similar resolution.

The Analysed column shows the number of residues for which the sidechain conformation was analysed, and the total number of residues.

Mol	Chain	Analysed	Rotameric	Outliers	Percentiles	
1	A	358/364 (98%)	356 (99%)	2 (1%)	86	68
1	B	366/364 (100%)	361 (99%)	5 (1%)	67	37
1	C	360/364 (99%)	356 (99%)	4 (1%)	73	47
1	D	354/364 (97%)	352 (99%)	2 (1%)	86	68
All	All	1438/1456 (99%)	1425 (99%)	13 (1%)	78	54

All (13) residues with a non-rotameric sidechain are listed below:

Mol	Chain	Res	Type
1	A	111	ASN
1	A	379	VAL
1	B	111	ASN
1	B	329	LEU
1	B	379	VAL
1	B	418	TYR
1	B	453	ASP
1	C	111	ASN
1	C	217	CYS
1	C	379	VAL
1	C	449	LEU
1	D	111	ASN
1	D	379	VAL

Some sidechains can be flipped to improve hydrogen bonding and reduce clashes. All (8) such sidechains are listed below:

Mol	Chain	Res	Type
1	A	158	HIS
1	A	165	GLN
1	A	385	GLN
1	B	165	GLN
1	B	385	GLN
1	D	14	HIS
1	D	165	GLN
1	D	385	GLN

### 5.3.3 RNA [i](#)

There are no RNA molecules in this entry.

## 5.4 Non-standard residues in protein, DNA, RNA chains [i](#)

There are no non-standard protein/DNA/RNA residues in this entry.

## 5.5 Carbohydrates [i](#)

There are no monosaccharides in this entry.

## 5.6 Ligand geometry [i](#)

Of 4 ligands modelled in this entry, 1 is monoatomic - leaving 3 for Mogul analysis.

In the following table, the Counts columns list the number of bonds (or angles) for which Mogul statistics could be retrieved, the number of bonds (or angles) that are observed in the model and the number of bonds (or angles) that are defined in the Chemical Component Dictionary. The Link column lists molecule types, if any, to which the group is linked. The Z score for a bond length (or angle) is the number of standard deviations the observed value is removed from the expected value. A bond length (or angle) with  $|Z| > 2$  is considered an outlier worth inspection. RMSZ is the root-mean-square of all Z scores of the bond lengths (or angles).

Mol	Type	Chain	Res	Link	Bond lengths			Bond angles		
					Counts	RMSZ	$\# Z  > 2$	Counts	RMSZ	$\# Z  > 2$
3	FMT	B	501	-	0,2,2	0.00	-	0,1,1	0.00	-
2	KZT	A	501	-	35,35,35	0.43	0	44,49,49	0.65	0
2	KZT	A	502	-	35,35,35	0.47	0	44,49,49	0.67	1 (2%)

In the following table, the Chirals column lists the number of chiral outliers, the number of chiral centers analysed, the number of these observed in the model and the number defined in the Chemical Component Dictionary. Similar counts are reported in the Torsion and Rings columns. '-' means no outliers of that kind were identified.

Mol	Type	Chain	Res	Link	Chirals	Torsions	Rings
2	KZT	A	501	-	-	6/22/31/31	0/4/4/4
2	KZT	A	502	-	-	5/22/31/31	0/4/4/4

There are no bond length outliers.

All (1) bond angle outliers are listed below:

Mol	Chain	Res	Type	Atoms	Z	Observed(°)	Ideal(°)
2	A	502	KZT	C18-N2-C23	3.05	125.11	115.19

There are no chirality outliers.

All (11) torsion outliers are listed below:

Mol	Chain	Res	Type	Atoms
2	A	501	KZT	C23-N2-S-O3
2	A	501	KZT	C23-N2-S-C
2	A	502	KZT	C1-C-S-O3
2	A	501	KZT	C1-C-S-O
2	A	502	KZT	C17-C-S-O3
2	A	502	KZT	C1-C-S-N2
2	A	501	KZT	C1-C-S-N2
2	A	502	KZT	C17-C-S-N2
2	A	501	KZT	C17-C-S-O
2	A	502	KZT	O2-C6-N-C5
2	A	501	KZT	C17-C-S-N2

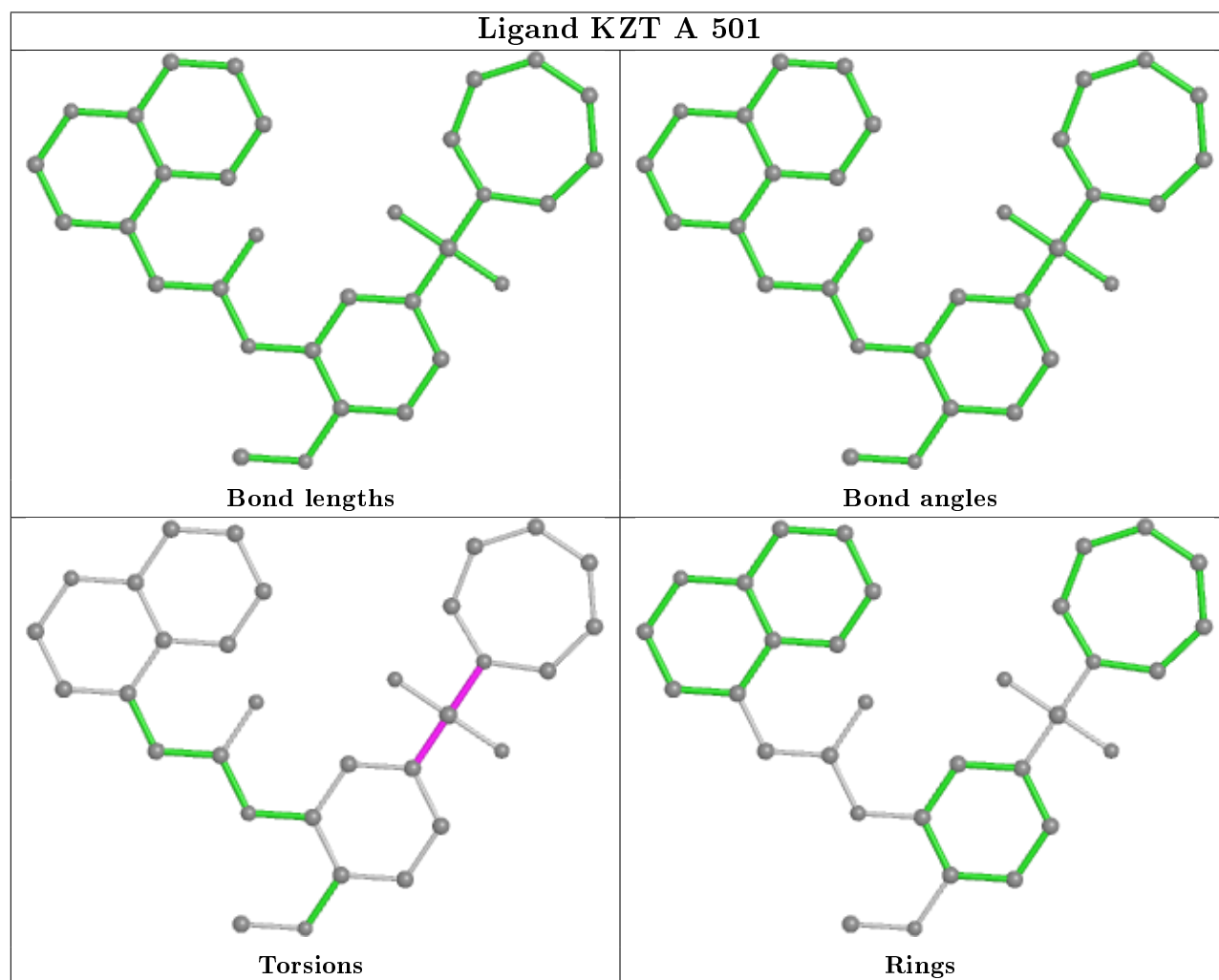
There are no ring outliers.

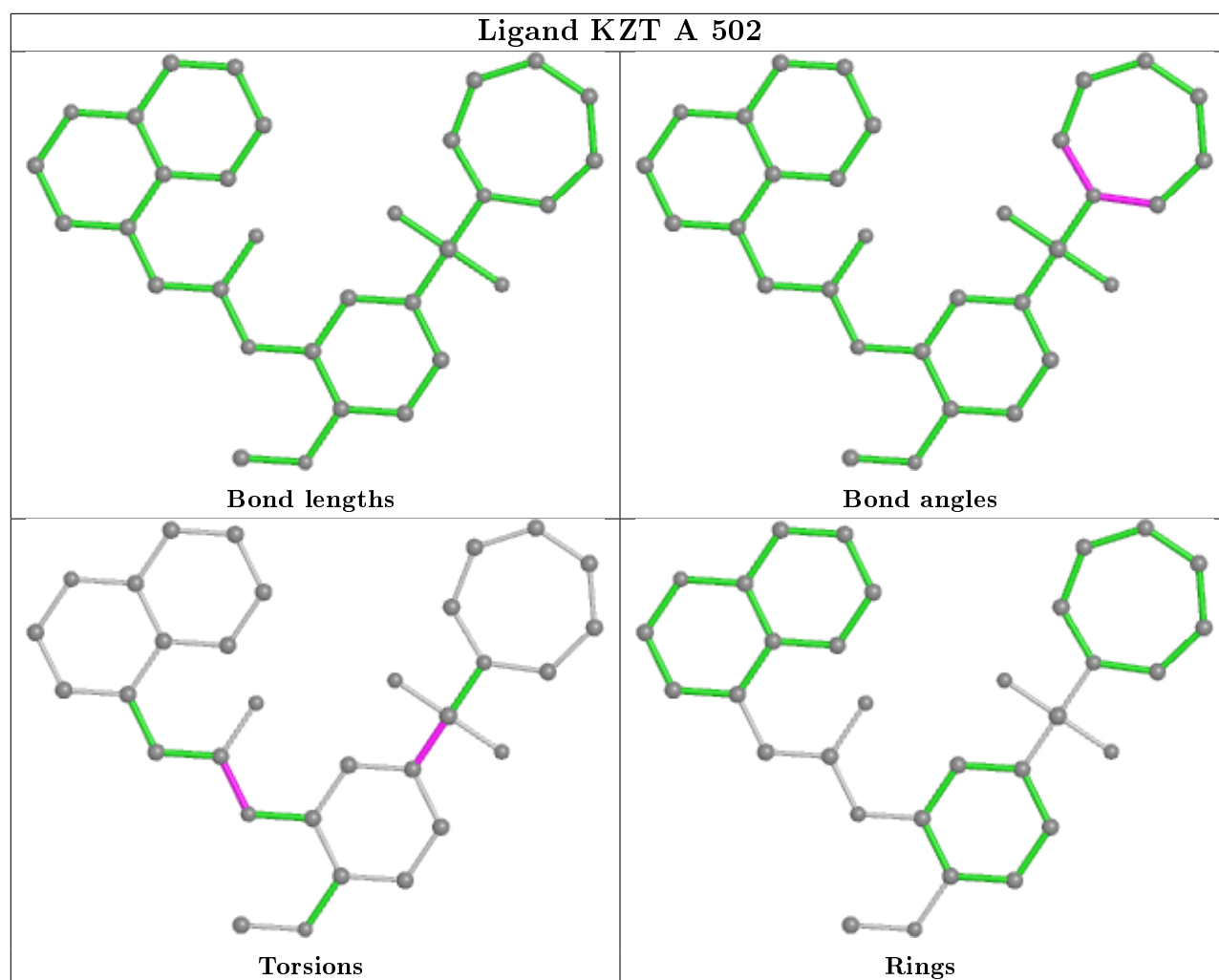
1 monomer is involved in 2 short contacts:

Mol	Chain	Res	Type	Clashes	Symm-Clashes
2	A	501	KZT	2	0

The following is a two-dimensional graphical depiction of Mogul quality analysis of bond lengths, bond angles, torsion angles, and ring geometry for all instances of the Ligand of Interest. In addition, ligands with molecular weight > 250 and outliers as shown on the validation Tables will also be included. For torsion angles, if less than 5% of the Mogul distribution of torsion angles is within 10 degrees of the torsion angle in question, then that torsion angle is considered an outlier. Any bond that is central to one or more torsion angles identified as an outlier by Mogul will be

highlighted in the graph. For rings, the root-mean-square deviation (RMSD) between the ring in question and similar rings identified by Mogul is calculated over all ring torsion angles. If the average RMSD is greater than 60 degrees and the minimal RMSD between the ring in question and any Mogul-identified rings is also greater than 60 degrees, then that ring is considered an outlier. The outliers are highlighted in purple. The color gray indicates Mogul did not find sufficient equivalents in the CSD to analyse the geometry.





## 5.7 Other polymers [i](#)

There are no such residues in this entry.

## 5.8 Polymer linkage issues [i](#)

There are no chain breaks in this entry.



## 6 Fit of model and data

### 6.1 Protein, DNA and RNA chains

In the following table, the column labelled ‘#RSRZ> 2’ contains the number (and percentage) of RSRZ outliers, followed by percent RSRZ outliers for the chain as percentile scores relative to all X-ray entries and entries of similar resolution. The OWAB column contains the minimum, median, 95<sup>th</sup> percentile and maximum values of the occupancy-weighted average B-factor per residue. The column labelled ‘Q< 0.9’ lists the number of (and percentage) of residues with an average occupancy less than 0.9.

Mol	Chain	Analysed	<RSRZ>	#RSRZ>2	OWAB(Å <sup>2</sup> )	Q<0.9
1	A	450/474 (94%)	-0.04	18 (4%) 38 39	9, 16, 43, 114	0
1	B	458/474 (96%)	0.13	28 (6%) 21 20	9, 17, 58, 112	0
1	C	451/474 (95%)	0.11	18 (3%) 38 39	9, 18, 49, 89	0
1	D	448/474 (94%)	0.14	18 (4%) 38 39	9, 17, 50, 111	0
All	All	1807/1896 (95%)	0.08	82 (4%) 33 34	9, 17, 50, 114	0

All (82) RSRZ outliers are listed below:

Mol	Chain	Res	Type	RSRZ
1	C	10	TYR	10.6
1	D	14	HIS	9.8
1	D	12	ILE	9.4
1	A	12	ILE	9.0
1	B	10	TYR	8.4
1	B	14	HIS	8.2
1	D	17	MET	7.6
1	D	418	TYR	7.3
1	D	16	THR	7.3
1	B	16	THR	7.1
1	D	19	GLU	7.1
1	D	10	TYR	6.9
1	A	14	HIS	6.7
1	A	10	TYR	6.7
1	B	12	ILE	6.6
1	A	16	THR	6.1
1	B	448	ARG	5.9
1	A	19	GLU	5.5
1	C	447	ASP	5.5
1	A	20	VAL	5.4
1	A	15	ASP	5.4

*Continued on next page...*

*Continued from previous page...*

Mol	Chain	Res	Type	RSRZ
1	B	19	GLU	5.2
1	D	20	VAL	5.2
1	A	314	LEU	5.2
1	B	15	ASP	5.1
1	C	14	HIS	5.1
1	A	21	ARG	4.9
1	D	15	ASP	4.8
1	C	322	PRO	4.8
1	A	17	MET	4.6
1	A	18	GLY	4.3
1	A	323	GLY	4.2
1	C	24	ALA	4.2
1	C	323	GLY	4.2
1	D	448	ARG	4.2
1	D	447	ASP	4.0
1	B	17	MET	3.9
1	C	25	LYS	3.8
1	C	12	ILE	3.8
1	C	314	LEU	3.8
1	D	21	ARG	3.7
1	B	452	GLU	3.6
1	C	21	ARG	3.5
1	A	447	ASP	3.5
1	D	25	LYS	3.5
1	C	16	THR	3.5
1	B	320	ILE	3.1
1	B	432	ARG	3.1
1	D	24	ALA	3.1
1	A	467	GLU	3.1
1	A	313	ASP	3.0
1	A	448	ARG	2.9
1	B	325	VAL	2.9
1	C	467	GLU	2.9
1	C	19	GLU	2.9
1	A	418	TYR	2.8
1	B	418	TYR	2.8
1	B	467	GLU	2.8
1	B	318	SER	2.8
1	B	317	GLY	2.7
1	B	430	LYS	2.7
1	C	15	ASP	2.6
1	B	451	ILE	2.6

*Continued on next page...*

*Continued from previous page...*

Mol	Chain	Res	Type	RSRZ
1	B	21	ARG	2.5
1	A	451	ILE	2.5
1	C	124	GLY	2.5
1	B	20	VAL	2.5
1	D	445	ILE	2.4
1	B	429[A]	LEU	2.4
1	D	419	GLU	2.3
1	B	440	ILE	2.2
1	B	445	ILE	2.2
1	D	451	ILE	2.2
1	B	447	ASP	2.2
1	B	319	SER	2.2
1	C	20	VAL	2.2
1	D	18	GLY	2.1
1	C	26	ALA	2.1
1	C	418	TYR	2.0
1	B	25	LYS	2.0
1	B	18	GLY	2.0
1	B	321	MET	2.0

## 6.2 Non-standard residues in protein, DNA, RNA chains [i](#)

There are no non-standard protein/DNA/RNA residues in this entry.

## 6.3 Carbohydrates [i](#)

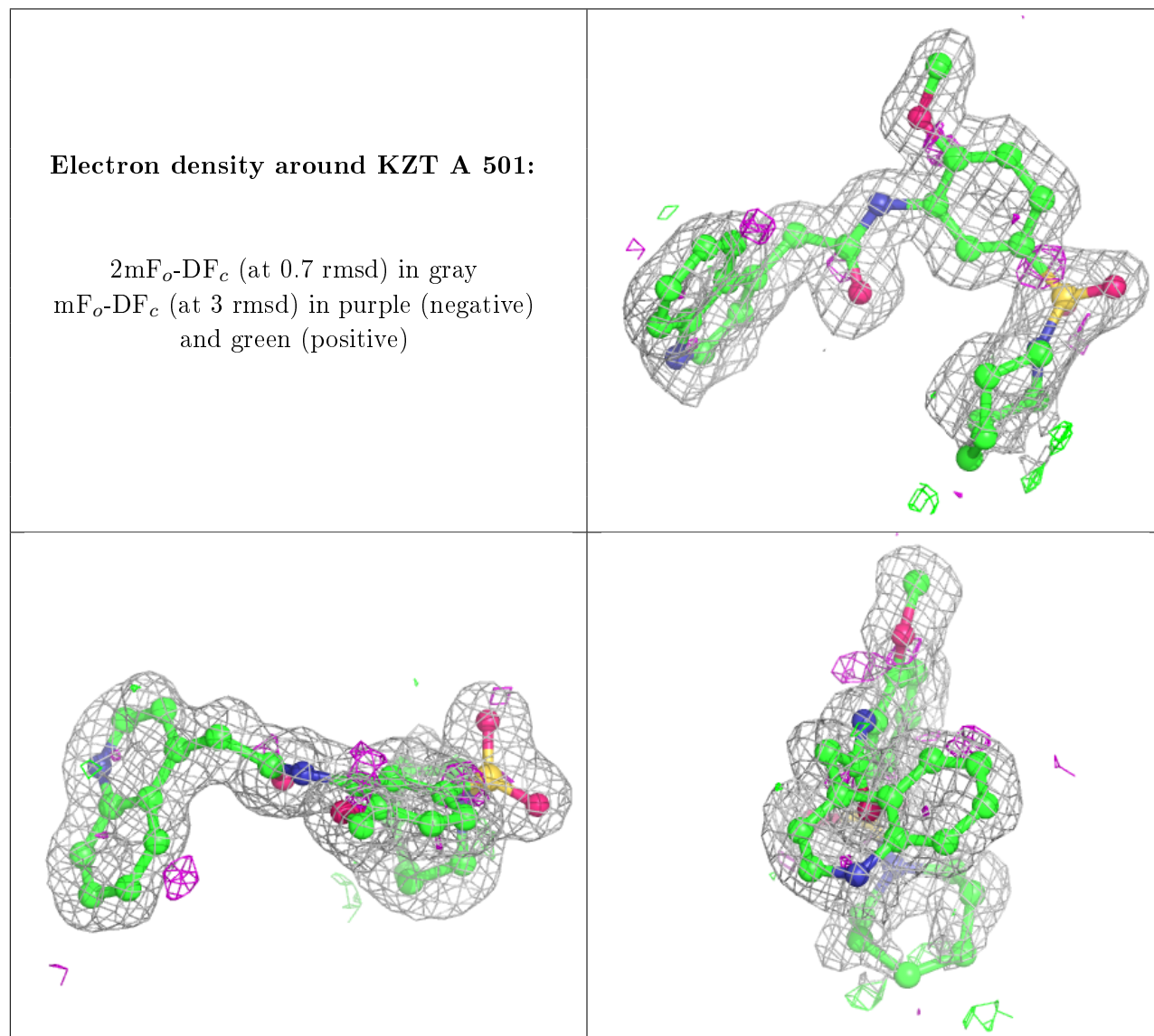
There are no monosaccharides in this entry.

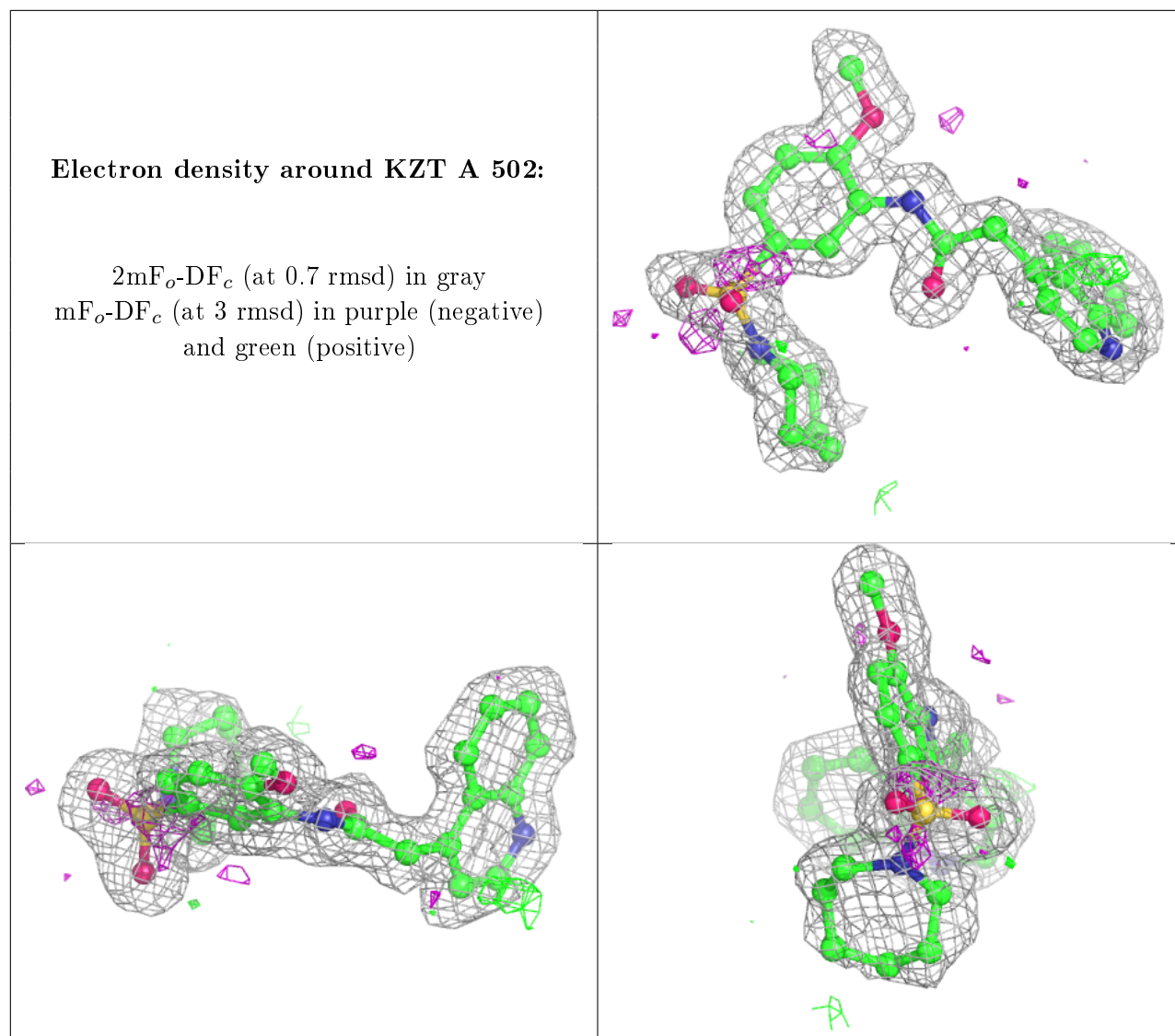
## 6.4 Ligands [i](#)

In the following table, the Atoms column lists the number of modelled atoms in the group and the number defined in the chemical component dictionary. The B-factors column lists the minimum, median, 95<sup>th</sup> percentile and maximum values of B factors of atoms in the group. The column labelled 'Q< 0.9' lists the number of atoms with occupancy less than 0.9.

Mol	Type	Chain	Res	Atoms	RSCC	RSR	B-factors( $\text{\AA}^2$ )	Q<0.9
3	FMT	B	501	3/3	0.96	0.12	28,28,29,29	0
2	KZT	A	501	32/32	0.96	0.12	15,21,40,44	0
4	MG	B	502	1/1	0.97	0.09	30,30,30,30	0
2	KZT	A	502	32/32	0.97	0.10	15,21,38,42	0

The following is a graphical depiction of the model fit to experimental electron density of all instances of the Ligand of Interest. In addition, ligands with molecular weight > 250 and outliers as shown on the geometry validation Tables will also be included. Each fit is shown from different orientation to approximate a three-dimensional view.





## 6.5 Other polymers [i](#)

There are no such residues in this entry.