



# Full wwPDB X-ray Structure Validation Report ⓘ

Oct 24, 2022 – 12:25 PM EDT

PDB ID : 7S8A  
Title : STRUCTURE OF HLA-B\*07:02 IN COMPLEX WITH MLL(747-755) PHOSPHOPEPTIDE, CUBIC CRYSTAL FORM  
Authors : Patskovska, L.; Patskovsky, Y.; Nyovanie, S.; Natarajan, A.; Joshi, B.; Morin, B.; Brittsan, C.; Huber, O.; Gordon, S.; Michelet, X.; Schmitzberger, F.; Stein, R.; Findeis, M.; Hurwitz, A.; Van Dijk, M.; Buell, J.; Underwood, D.; Krosgaard, M.  
Deposited on : 2021-09-17  
Resolution : 2.10 Å(reported)

This is a Full wwPDB X-ray Structure Validation Report for a publicly released PDB entry.

We welcome your comments at [validation@mail.wwpdb.org](mailto:validation@mail.wwpdb.org)

A user guide is available at

<https://www.wwpdb.org/validation/2017/XrayValidationReportHelp>

with specific help available everywhere you see the ⓘ symbol.

The types of validation reports are described at

<http://www.wwpdb.org/validation/2017/FAQs#types>.

---

The following versions of software and data (see [references ⓘ](#)) were used in the production of this report:

MolProbity	:	4.02b-467
Mogul	:	1.8.5 (274361), CSD as541be (2020)
Xtriage (Phenix)	:	1.13
EDS	:	2.31.2
buster-report	:	1.1.7 (2018)
Percentile statistics	:	20191225.v01 (using entries in the PDB archive December 25th 2019)
Refmac	:	5.8.0158
CCP4	:	7.0.044 (Gargrove)
Ideal geometry (proteins)	:	Engh & Huber (2001)

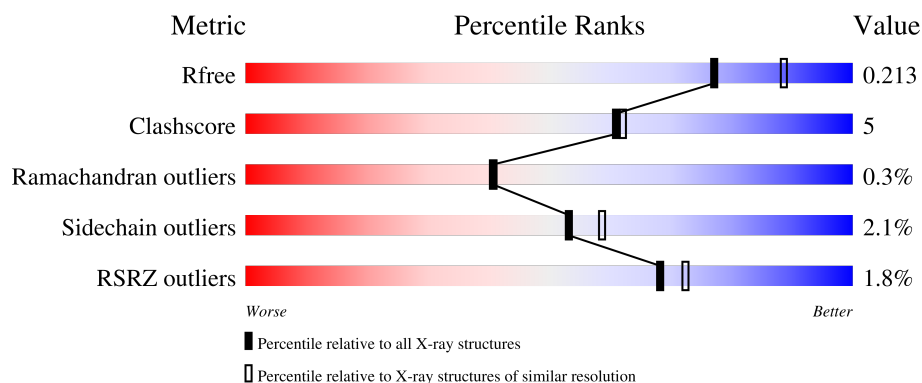
# 1 Overall quality at a glance

The following experimental techniques were used to determine the structure:

*X-RAY DIFFRACTION*

The reported resolution of this entry is 2.10 Å.

Percentile scores (ranging between 0-100) for global validation metrics of the entry are shown in the following graphic. The table shows the number of entries on which the scores are based.



Metric	Whole archive (#Entries)	Similar resolution (#Entries, resolution range(Å))
$R_{free}$	130704	5197 (2.10-2.10)
Clashscore	141614	5710 (2.10-2.10)
Ramachandran outliers	138981	5647 (2.10-2.10)
Sidechain outliers	138945	5648 (2.10-2.10)
RSRZ outliers	127900	5083 (2.10-2.10)

The table below summarises the geometric issues observed across the polymeric chains and their fit to the electron density. The red, orange, yellow and green segments of the lower bar indicate the fraction of residues that contain outliers for  $\geq 3$ , 2, 1 and 0 types of geometric quality criteria respectively. A grey segment represents the fraction of residues that are not modelled. The numeric value for each fraction is indicated below the corresponding segment, with a dot representing fractions  $\leq 5\%$ . The upper red bar (where present) indicates the fraction of residues that have poor fit to the electron density. The numeric value is given above the bar.

Mol	Chain	Length	Quality of chain
1	A	275	<div> <div>3%</div> <div>88%</div> <div>11%</div> </div>
2	B	100	<div> <div>94%</div> <div>6%</div> </div>
3	C	9	<div> <div>44%</div> <div>56%</div> </div>

Ideal geometry (DNA, RNA) : Parkinson et al. (1996)  
Validation Pipeline (wwPDB-VP) : 2.31.2

## 2 Entry composition

There are 11 unique types of molecules in this entry. The entry contains 3580 atoms, of which 0 are hydrogens and 0 are deuteriums.

In the tables below, the ZeroOcc column contains the number of atoms modelled with zero occupancy, the AltConf column contains the number of residues with at least one atom in alternate conformation and the Trace column contains the number of residues modelled with at most 2 atoms.

- Molecule 1 is a protein called HLA class I histocompatibility antigen, B-7 alpha chain.

Mol	Chain	Residues	Atoms					ZeroOcc	AltConf	Trace
1	A	275	Total	C	N	O	S	0	1	0
			2262	1403	415	438	6			

- Molecule 2 is a protein called Beta-2-microglobulin.

Mol	Chain	Residues	Atoms					ZeroOcc	AltConf	Trace
2	B	100	Total	C	N	O	S	0	0	0
			831	529	139	159	4			

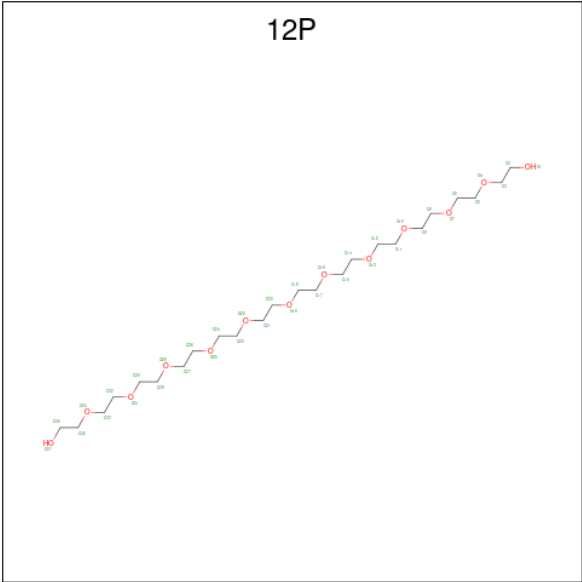
There is a discrepancy between the modelled and reference sequences:

Chain	Residue	Modelled	Actual	Comment	Reference
B	0	MET	-	initiating methionine	UNP P61769

- Molecule 3 is a protein called MLL cleavage product N320 phosphopeptide.

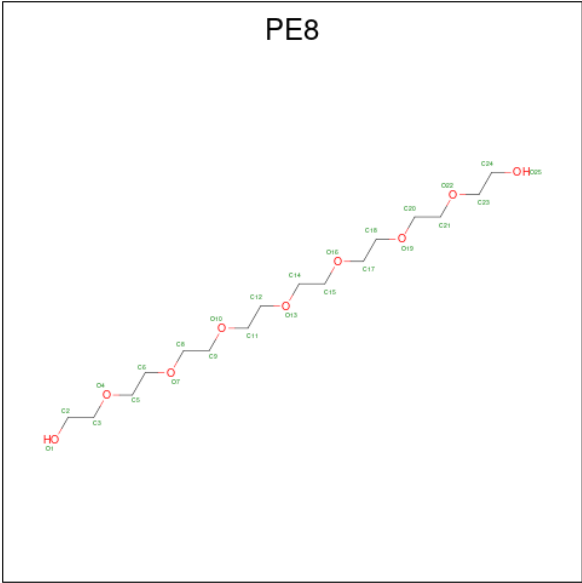
Mol	Chain	Residues	Atoms					ZeroOcc	AltConf	Trace
3	C	9	Total	C	N	O	P	S	0	0
			75	41	14	18	1	1		

- Molecule 4 is DODECAETHYLENE GLYCOL (three-letter code: 12P) (formula: C<sub>24</sub>H<sub>50</sub>O<sub>13</sub>).



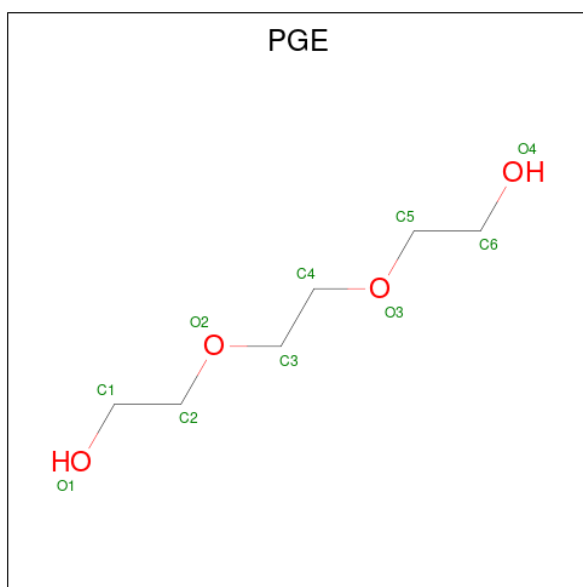
Mol	Chain	Residues	Atoms			ZeroOcc	AltConf
4	A	1	Total	C	O	0	0
			37	24	13		

- Molecule 5 is 3,6,9,12,15,18,21-HEPTAOXATRICOSANE-1,23-DIOL (three-letter code: PE8) (formula: C<sub>16</sub>H<sub>34</sub>O<sub>9</sub>).



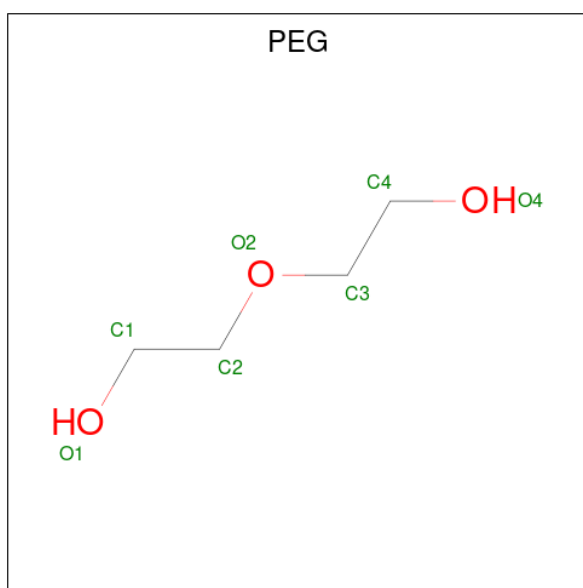
Mol	Chain	Residues	Atoms			ZeroOcc	AltConf
5	A	1	Total	C	O	0	0
			25	16	9		

- Molecule 6 is TRIETHYLENE GLYCOL (three-letter code: PGE) (formula: C<sub>6</sub>H<sub>14</sub>O<sub>4</sub>).



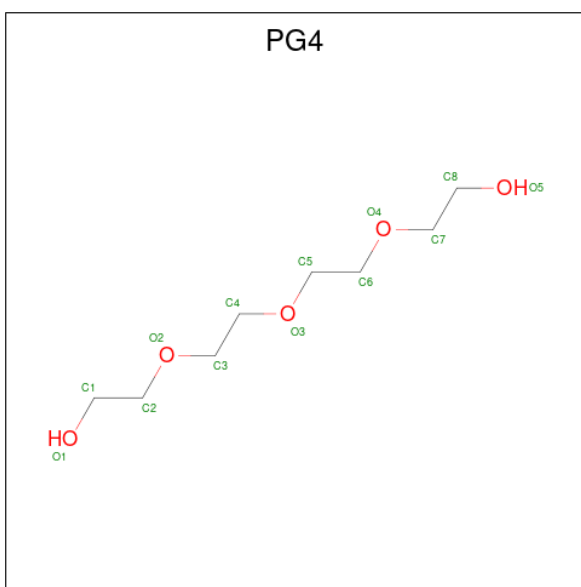
Mol	Chain	Residues	Atoms			ZeroOcc	AltConf
6	A	1	Total	C	O	0	0
			10	6	4		
6	A	1	Total	C	O	0	0
			10	6	4		

- Molecule 7 is DI(HYDROXYETHYL)ETHER (three-letter code: PEG) (formula:  $C_4H_{10}O_3$ ).



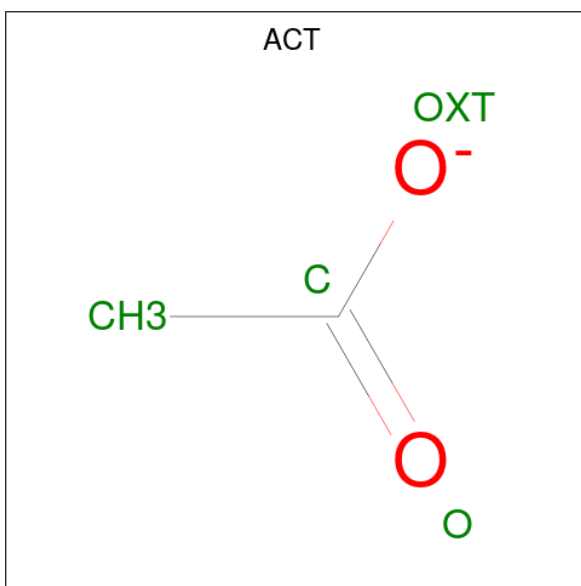
Mol	Chain	Residues	Atoms			ZeroOcc	AltConf
7	A	1	Total	C	O	0	0
			7	4	3		

- Molecule 8 is TETRAETHYLENE GLYCOL (three-letter code: PG4) (formula:  $C_8H_{18}O_5$ ).



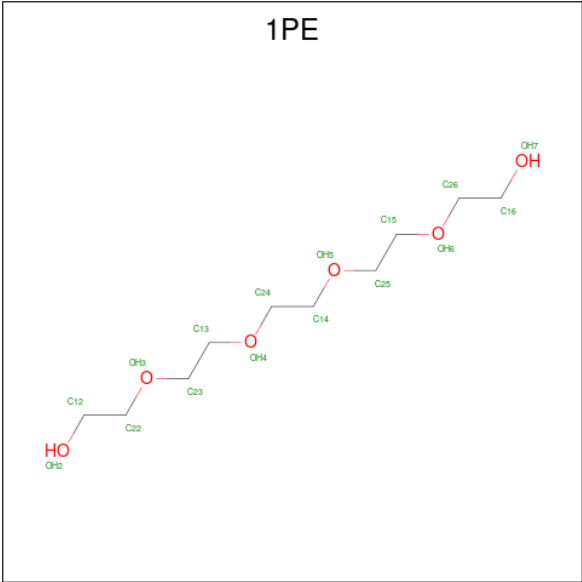
Mol	Chain	Residues	Atoms			ZeroOcc	AltConf
8	A	1	Total	C	O	0	0
			13	8	5		

- Molecule 9 is ACETATE ION (three-letter code: ACT) (formula:  $C_2H_3O_2$ ).



Mol	Chain	Residues	Atoms			ZeroOcc	AltConf
9	A	1	Total	C	O	0	0
			4	2	2		

- Molecule 10 is PENTAETHYLENE GLYCOL (three-letter code: 1PE) (formula:  $C_{10}H_{22}O_6$ ).



Mol	Chain	Residues	Atoms			ZeroOcc	AltConf
10	B	1	Total	C	O	0	0
			16	10	6		

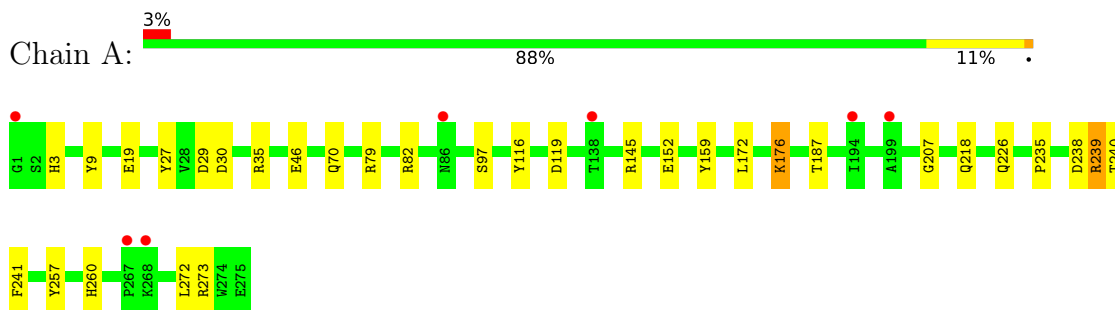
- Molecule 11 is water.

Mol	Chain	Residues	Atoms		ZeroOcc	AltConf
11	A	192	Total	O	0	0
			192	192		
11	B	87	Total	O	0	1
			88	88		
11	C	10	Total	O	0	0
			10	10		

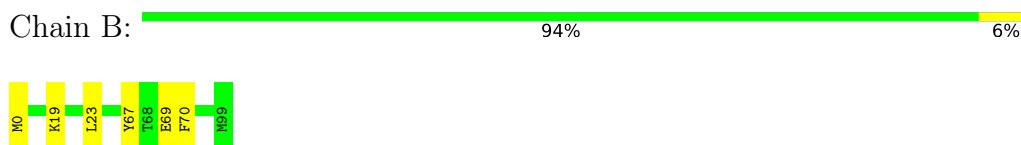
### 3 Residue-property plots

These plots are drawn for all protein, RNA, DNA and oligosaccharide chains in the entry. The first graphic for a chain summarises the proportions of the various outlier classes displayed in the second graphic. The second graphic shows the sequence view annotated by issues in geometry and electron density. Residues are color-coded according to the number of geometric quality criteria for which they contain at least one outlier: green = 0, yellow = 1, orange = 2 and red = 3 or more. A red dot above a residue indicates a poor fit to the electron density ( $RSRZ > 2$ ). Stretches of 2 or more consecutive residues without any outlier are shown as a green connector. Residues present in the sample, but not in the model, are shown in grey.

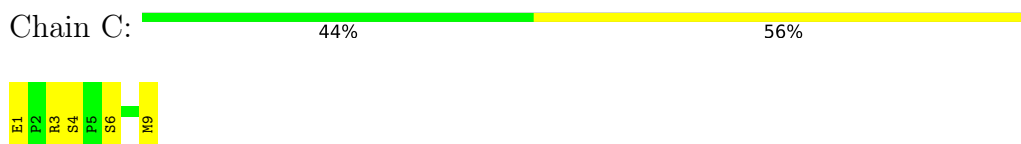
- Molecule 1: HLA class I histocompatibility antigen, B-7 alpha chain



- Molecule 2: Beta-2-microglobulin



- Molecule 3: MLL cleavage product N320 phosphopeptide



## 4 Data and refinement statistics

Property	Value	Source
Space group	I 21 3	Depositor
Cell constants a, b, c, $\alpha$ , $\beta$ , $\gamma$	147.81Å 147.81Å 147.81Å 90.00° 90.00° 90.00°	Depositor
Resolution (Å)	29.01 – 2.10 28.99 – 2.09	Depositor EDS
% Data completeness (in resolution range)	100.0 (29.01-2.10) 99.6 (28.99-2.09)	Depositor EDS
$R_{merge}$	0.17	Depositor
$R_{sym}$	(Not available)	Depositor
$\langle I/\sigma(I) \rangle$ <sup>1</sup>	2.41 (at 2.10Å)	Xtriage
Refinement program	REFMAC 5.8.0258	Depositor
R, $R_{free}$	0.160 , 0.206 0.172 , 0.213	Depositor DCC
$R_{free}$ test set	944 reflections (2.99%)	wwPDB-VP
Wilson B-factor (Å <sup>2</sup> )	25.2	Xtriage
Anisotropy	0.000	Xtriage
Bulk solvent $k_{sol}$ (e/Å <sup>3</sup> ), $B_{sol}$ (Å <sup>2</sup> )	0.37 , 59.2	EDS
L-test for twinning <sup>2</sup>	$\langle  L  \rangle = 0.51$ , $\langle L^2 \rangle = 0.35$	Xtriage
Estimated twinning fraction	0.020 for -l,-k,-h	Xtriage
$F_o, F_c$ correlation	0.96	EDS
Total number of atoms	3580	wwPDB-VP
Average B, all atoms (Å <sup>2</sup> )	33.0	wwPDB-VP

Xtriage's analysis on translational NCS is as follows: *The largest off-origin peak in the Patterson function is 2.87% of the height of the origin peak. No significant pseudotranslation is detected.*

<sup>1</sup>Intensities estimated from amplitudes.

<sup>2</sup>Theoretical values of  $\langle |L| \rangle$ ,  $\langle L^2 \rangle$  for acentric reflections are 0.5, 0.333 respectively for untwinned datasets, and 0.375, 0.2 for perfectly twinned datasets.

## 5 Model quality [i](#)

### 5.1 Standard geometry [i](#)

Bond lengths and bond angles in the following residue types are not validated in this section: PG4, SEP, PE8, 12P, PEG, ACT, PGE, 1PE

The Z score for a bond length (or angle) is the number of standard deviations the observed value is removed from the expected value. A bond length (or angle) with  $|Z| > 5$  is considered an outlier worth inspection. RMSZ is the root-mean-square of all Z scores of the bond lengths (or angles).

Mol	Chain	Bond lengths		Bond angles	
		RMSZ	$\# Z  > 5$	RMSZ	$\# Z  > 5$
1	A	0.74	2/2327 (0.1%)	0.83	0/3159
2	B	0.67	0/854	0.82	0/1156
3	C	1.07	0/66	0.97	0/84
All	All	0.73	2/3247 (0.1%)	0.83	0/4399

All (2) bond length outliers are listed below:

Mol	Chain	Res	Type	Atoms	Z	Observed(Å)	Ideal(Å)
1	A	19	GLU	CD-OE2	-5.66	1.19	1.25
1	A	46	GLU	CD-OE2	-5.37	1.19	1.25

There are no bond angle outliers.

There are no chirality outliers.

There are no planarity outliers.

### 5.2 Too-close contacts [i](#)

In the following table, the Non-H and H(model) columns list the number of non-hydrogen atoms and hydrogen atoms in the chain respectively. The H(added) column lists the number of hydrogen atoms added and optimized by MolProbity. The Clashes column lists the number of clashes within the asymmetric unit, whereas Symm-Clashes lists symmetry-related clashes.

Mol	Chain	Non-H	H(model)	H(added)	Clashes	Symm-Clashes
1	A	2262	0	2104	26	0
2	B	831	0	785	2	0
3	C	75	0	65	3	0
4	A	37	0	50	9	0
5	A	25	0	34	0	0
6	A	20	0	28	0	0

*Continued on next page...*

*Continued from previous page...*

Mol	Chain	Non-H	H(model)	H(added)	Clashes	Symm-Clashes
7	A	7	0	10	0	0
8	A	13	0	18	0	0
9	A	4	0	3	0	0
10	B	16	0	22	0	0
11	A	192	0	0	8	0
11	B	88	0	0	0	0
11	C	10	0	0	0	0
All	All	3580	0	3119	29	0

The all-atom clashscore is defined as the number of clashes found per 1000 atoms (including hydrogen atoms). The all-atom clashscore for this structure is 5.

All (29) close contacts within the same asymmetric unit are listed below, sorted by their clash magnitude.

Atom-1	Atom-2	Interatomic distance (Å)	Clash overlap (Å)
1:A:3:HIS:ND1	1:A:29:ASP:OD2	2.24	0.70
1:A:79:ARG:NH2	11:A:402:HOH:O	2.27	0.66
1:A:241:PHE:CE1	4:A:301:12P:H181	2.31	0.66
1:A:3:HIS:CE1	1:A:29:ASP:OD2	2.48	0.66
1:A:187:THR:HB	1:A:272:LEU:HD11	1.90	0.52
1:A:82:ARG:NH2	11:A:410:HOH:O	2.43	0.52
1:A:145:ARG:NH2	11:A:411:HOH:O	2.43	0.51
1:A:9:TYR:CE2	1:A:70:GLN:HG2	2.48	0.49
1:A:226:GLN:HG2	11:A:525:HOH:O	2.12	0.49
1:A:273:ARG:NH1	11:A:414:HOH:O	2.47	0.48
1:A:159:TYR:CG	3:C:3:ARG:HG3	2.48	0.48
1:A:30:ASP:HA	4:A:301:12P:H111	1.96	0.47
1:A:3:HIS:HD1	1:A:29:ASP:CG	2.18	0.47
1:A:235:PRO:HD3	4:A:301:12P:H201	1.97	0.47
2:B:23:LEU:O	2:B:67:TYR:HA	2.15	0.47
1:A:207:GLY:HA2	1:A:240:THR:OG1	2.14	0.46
1:A:172:LEU:O	1:A:176:LYS:HB3	2.15	0.46
1:A:241:PHE:HE1	4:A:301:12P:H181	1.77	0.46
1:A:241:PHE:CE1	4:A:301:12P:C18	3.00	0.44
1:A:218:GLN:O	1:A:257:TYR:HA	2.17	0.44
1:A:119:ASP:HB3	2:B:0:MET:HA	2.01	0.42
1:A:238:ASP:O	1:A:239:ARG:HG2	2.20	0.42
1:A:241:PHE:CD1	4:A:301:12P:H181	2.55	0.42
1:A:260:HIS:HB3	11:A:584:HOH:O	2.21	0.41
4:A:301:12P:H21	11:A:433:HOH:O	2.19	0.41
1:A:27:TYR:CE2	4:A:301:12P:H112	2.56	0.41

*Continued on next page...*

*Continued from previous page...*

Atom-1	Atom-2	Interatomic distance (Å)	Clash overlap (Å)
4:A:301:12P:H32	11:A:403:HOH:O	2.20	0.41
1:A:152:GLU:OE1	3:C:6:SER:HB3	2.21	0.40
1:A:116:TYR:CD2	3:C:9:MET:HE1	2.56	0.40

There are no symmetry-related clashes.

## 5.3 Torsion angles [i](#)

### 5.3.1 Protein backbone [i](#)

In the following table, the Percentiles column shows the percent Ramachandran outliers of the chain as a percentile score with respect to all X-ray entries followed by that with respect to entries of similar resolution.

The Analysed column shows the number of residues for which the backbone conformation was analysed, and the total number of residues.

Mol	Chain	Analysed	Favoured	Allowed	Outliers	Percentiles	
1	A	274/275 (100%)	268 (98%)	5 (2%)	1 (0%)	34	32
2	B	98/100 (98%)	97 (99%)	1 (1%)	0	100	100
3	C	6/9 (67%)	5 (83%)	1 (17%)	0	100	100
All	All	378/384 (98%)	370 (98%)	7 (2%)	1 (0%)	41	41

All (1) Ramachandran outliers are listed below:

Mol	Chain	Res	Type
1	A	239	ARG

### 5.3.2 Protein sidechains [i](#)

In the following table, the Percentiles column shows the percent sidechain outliers of the chain as a percentile score with respect to all X-ray entries followed by that with respect to entries of similar resolution.

The Analysed column shows the number of residues for which the sidechain conformation was analysed, and the total number of residues.

Mol	Chain	Analysed	Rotameric	Outliers	Percentiles	
1	A	233/233 (100%)	230 (99%)	3 (1%)	69	75

*Continued on next page...*

Continued from previous page...

Mol	Chain	Analysed	Rotameric	Outliers	Percentiles	
2	B	93/95 (98%)	90 (97%)	3 (3%)	39	41
3	C	8/8 (100%)	7 (88%)	1 (12%)	4	2
All	All	334/336 (99%)	327 (98%)	7 (2%)	53	59

All (7) residues with a non-rotameric sidechain are listed below:

Mol	Chain	Res	Type
1	A	35	ARG
1	A	97	SER
1	A	176	LYS
2	B	19	LYS
2	B	69	GLU
2	B	70	PHE
3	C	1	GLU

Sometimes sidechains can be flipped to improve hydrogen bonding and reduce clashes. All (2) such sidechains are listed below:

Mol	Chain	Res	Type
1	A	174	ASN
1	A	255	GLN

### 5.3.3 RNA ⓘ

There are no RNA molecules in this entry.

## 5.4 Non-standard residues in protein, DNA, RNA chains ⓘ

1 non-standard protein/DNA/RNA residue is modelled in this entry.

In the following table, the Counts columns list the number of bonds (or angles) for which Mogul statistics could be retrieved, the number of bonds (or angles) that are observed in the model and the number of bonds (or angles) that are defined in the Chemical Component Dictionary. The Link column lists molecule types, if any, to which the group is linked. The Z score for a bond length (or angle) is the number of standard deviations the observed value is removed from the expected value. A bond length (or angle) with  $|Z| > 2$  is considered an outlier worth inspection. RMSZ is the root-mean-square of all Z scores of the bond lengths (or angles).

Mol	Type	Chain	Res	Link	Bond lengths			Bond angles		
					Counts	RMSZ	$\# Z  > 2$	Counts	RMSZ	$\# Z  > 2$
3	SEP	C	4	3	8,9,10	1.14	0	8,12,14	1.60	1 (12%)

In the following table, the Chirals column lists the number of chiral outliers, the number of chiral centers analysed, the number of these observed in the model and the number defined in the Chemical Component Dictionary. Similar counts are reported in the Torsion and Rings columns. '-' means no outliers of that kind were identified.

Mol	Type	Chain	Res	Link	Chirals	Torsions	Rings
3	SEP	C	4	3	-	0/5/8/10	-

There are no bond length outliers.

All (1) bond angle outliers are listed below:

Mol	Chain	Res	Type	Atoms	Z	Observed(°)	Ideal(°)
3	C	4	SEP	O3P-P-O2P	2.40	116.81	107.64

There are no chirality outliers.

There are no torsion outliers.

There are no ring outliers.

No monomer is involved in short contacts.

## 5.5 Carbohydrates [i](#)

There are no monosaccharides in this entry.

## 5.6 Ligand geometry [i](#)

8 ligands are modelled in this entry.

In the following table, the Counts columns list the number of bonds (or angles) for which Mogul statistics could be retrieved, the number of bonds (or angles) that are observed in the model and the number of bonds (or angles) that are defined in the Chemical Component Dictionary. The Link column lists molecule types, if any, to which the group is linked. The Z score for a bond length (or angle) is the number of standard deviations the observed value is removed from the expected value. A bond length (or angle) with  $|Z| > 2$  is considered an outlier worth inspection. RMSZ is the root-mean-square of all Z scores of the bond lengths (or angles).

Mol	Type	Chain	Res	Link	Bond lengths			Bond angles		
					Counts	RMSZ	$\# Z  > 2$	Counts	RMSZ	$\# Z  > 2$
9	ACT	A	307	-	3,3,3	0.88	0	3,3,3	0.88	0
5	PE8	A	302	-	24,24,24	0.19	0	23,23,23	0.21	0
6	PGE	A	303	-	9,9,9	0.32	0	8,8,8	0.16	0
6	PGE	A	304	-	9,9,9	0.19	0	8,8,8	0.14	0
8	PG4	A	306	-	12,12,12	0.46	0	11,11,11	0.43	0

Mol	Type	Chain	Res	Link	Bond lengths			Bond angles		
					Counts	RMSZ	# Z  > 2	Counts	RMSZ	# Z  > 2
7	PEG	A	305	-	6,6,6	0.19	0	5,5,5	0.14	0
4	12P	A	301	-	36,36,36	0.36	0	35,35,35	0.48	0
10	1PE	B	101	-	15,15,15	0.35	0	14,14,14	0.44	0

In the following table, the Chirals column lists the number of chiral outliers, the number of chiral centers analysed, the number of these observed in the model and the number defined in the Chemical Component Dictionary. Similar counts are reported in the Torsion and Rings columns. '-' means no outliers of that kind were identified.

Mol	Type	Chain	Res	Link	Chirals	Torsions	Rings
5	PE8	A	302	-	-	6/22/22/22	-
6	PGE	A	303	-	-	1/7/7/7	-
6	PGE	A	304	-	-	3/7/7/7	-
8	PG4	A	306	-	-	5/10/10/10	-
7	PEG	A	305	-	-	2/4/4/4	-
4	12P	A	301	-	-	13/34/34/34	-
10	1PE	B	101	-	-	5/13/13/13	-

There are no bond length outliers.

There are no bond angle outliers.

There are no chirality outliers.

All (35) torsion outliers are listed below:

Mol	Chain	Res	Type	Atoms
4	A	301	12P	O19-C20-C21-O22
4	A	301	12P	O13-C14-C15-O16
6	A	304	PGE	O1-C1-C2-O2
7	A	305	PEG	O1-C1-C2-O2
4	A	301	12P	O10-C11-C12-O13
6	A	304	PGE	O3-C5-C6-O4
8	A	306	PG4	O4-C7-C8-O5
8	A	306	PG4	O3-C5-C6-O4
5	A	302	PE8	O4-C5-C6-O7
5	A	302	PE8	O19-C20-C21-O22
5	A	302	PE8	O13-C14-C15-O16
7	A	305	PEG	O2-C3-C4-O4
5	A	302	PE8	C21-C20-O19-C18
8	A	306	PG4	C1-C2-O2-C3
4	A	301	12P	C14-C15-O16-C17

*Continued on next page...*

*Continued from previous page...*

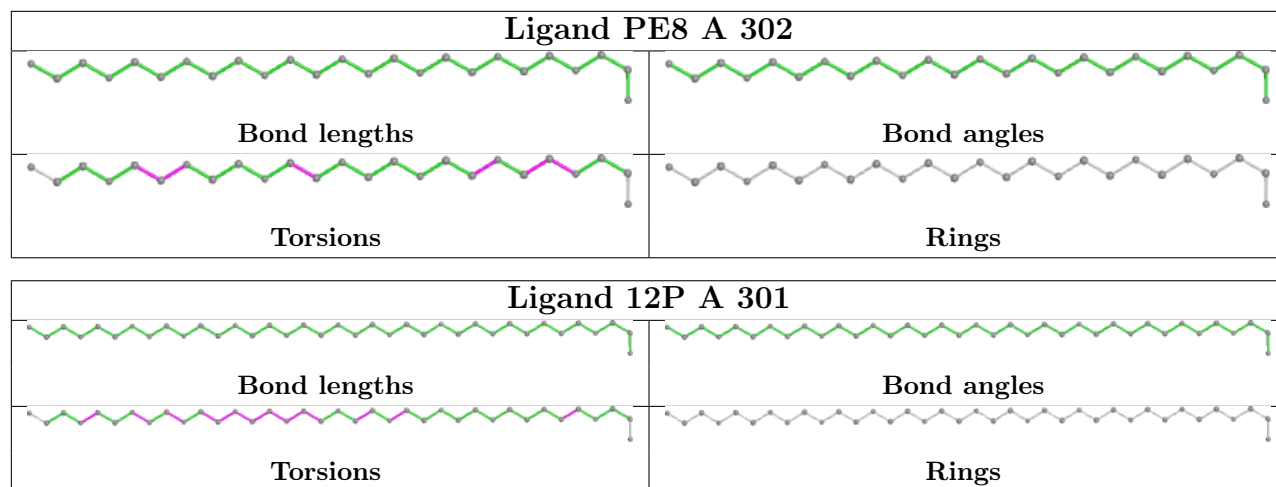
Mol	Chain	Res	Type	Atoms
10	B	101	1PE	C12-C22-OH3-C23
4	A	301	12P	C15-C14-O13-C12
4	A	301	12P	C6-C5-O4-C3
10	B	101	1PE	OH2-C12-C22-OH3
8	A	306	PG4	C3-C4-O3-C5
4	A	301	12P	O16-C17-C18-O19
5	A	302	PE8	C9-C8-O7-C6
4	A	301	12P	C9-C8-O7-C6
10	B	101	1PE	C16-C26-OH6-C15
10	B	101	1PE	C15-C25-OH5-C14
10	B	101	1PE	C13-C23-OH3-C22
4	A	301	12P	C11-C12-O13-C14
5	A	302	PE8	C6-C5-O4-C3
4	A	301	12P	C24-C23-O22-C21
6	A	304	PGE	C4-C3-O2-C2
6	A	303	PGE	O1-C1-C2-O2
4	A	301	12P	C18-C17-O16-C15
8	A	306	PG4	O1-C1-C2-O2
4	A	301	12P	C8-C9-O10-C11
4	A	301	12P	O31-C32-C33-O34

There are no ring outliers.

1 monomer is involved in 9 short contacts:

Mol	Chain	Res	Type	Clashes	Symm-Clashes
4	A	301	12P	9	0

The following is a two-dimensional graphical depiction of Mogul quality analysis of bond lengths, bond angles, torsion angles, and ring geometry for all instances of the Ligand of Interest. In addition, ligands with molecular weight > 250 and outliers as shown on the validation Tables will also be included. For torsion angles, if less than 5% of the Mogul distribution of torsion angles is within 10 degrees of the torsion angle in question, then that torsion angle is considered an outlier. Any bond that is central to one or more torsion angles identified as an outlier by Mogul will be highlighted in the graph. For rings, the root-mean-square deviation (RMSD) between the ring in question and similar rings identified by Mogul is calculated over all ring torsion angles. If the average RMSD is greater than 60 degrees and the minimal RMSD between the ring in question and any Mogul-identified rings is also greater than 60 degrees, then that ring is considered an outlier. The outliers are highlighted in purple. The color gray indicates Mogul did not find sufficient equivalents in the CSD to analyse the geometry.



## 5.7 Other polymers [i](#)

There are no such residues in this entry.

## 5.8 Polymer linkage issues [i](#)

There are no chain breaks in this entry.

## 6 Fit of model and data [i](#)

### 6.1 Protein, DNA and RNA chains [i](#)

In the following table, the column labelled ‘#RSRZ> 2’ contains the number (and percentage) of RSRZ outliers, followed by percent RSRZ outliers for the chain as percentile scores relative to all X-ray entries and entries of similar resolution. The OWAB column contains the minimum, median, 95<sup>th</sup> percentile and maximum values of the occupancy-weighted average B-factor per residue. The column labelled ‘Q< 0.9’ lists the number of (and percentage) of residues with an average occupancy less than 0.9.

Mol	Chain	Analysed	<RSRZ>	#RSRZ>2	OWAB(Å <sup>2</sup> )	Q<0.9
1	A	275/275 (100%)	-0.02	7 (2%) 57 62	20, 30, 51, 71	0
2	B	100/100 (100%)	-0.28	0 100 100	21, 28, 51, 76	0
3	C	8/9 (88%)	-0.04	0 100 100	22, 33, 43, 46	0
All	All	383/384 (99%)	-0.09	7 (1%) 68 72	20, 30, 51, 76	0

All (7) RSRZ outliers are listed below:

Mol	Chain	Res	Type	RSRZ
1	A	194	ILE	4.7
1	A	1	GLY	4.2
1	A	267	PRO	2.6
1	A	86	ASN	2.5
1	A	199	ALA	2.4
1	A	138	THR	2.1
1	A	268	LYS	2.0

### 6.2 Non-standard residues in protein, DNA, RNA chains [i](#)

In the following table, the Atoms column lists the number of modelled atoms in the group and the number defined in the chemical component dictionary. The B-factors column lists the minimum, median, 95<sup>th</sup> percentile and maximum values of B factors of atoms in the group. The column labelled ‘Q< 0.9’ lists the number of atoms with occupancy less than 0.9.

Mol	Type	Chain	Res	Atoms	RSCC	RSR	B-factors(Å <sup>2</sup> )	Q<0.9
3	SEP	C	4	10/11	0.96	0.08	22,32,43,45	0

### 6.3 Carbohydrates [i](#)

There are no monosaccharides in this entry.

## 6.4 Ligands ⓘ

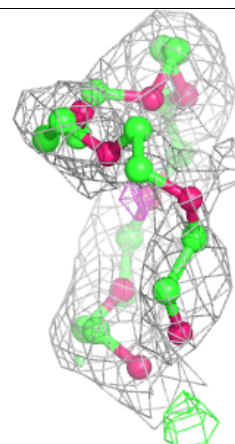
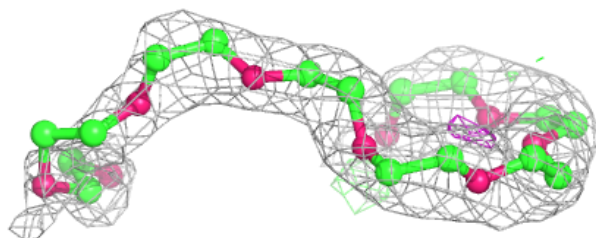
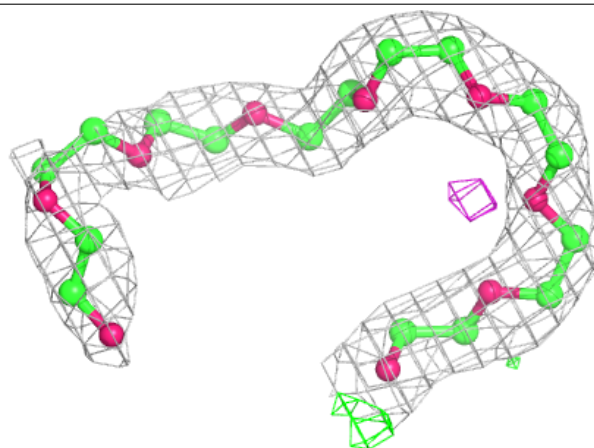
In the following table, the Atoms column lists the number of modelled atoms in the group and the number defined in the chemical component dictionary. The B-factors column lists the minimum, median, 95<sup>th</sup> percentile and maximum values of B factors of atoms in the group. The column labelled 'Q< 0.9' lists the number of atoms with occupancy less than 0.9.

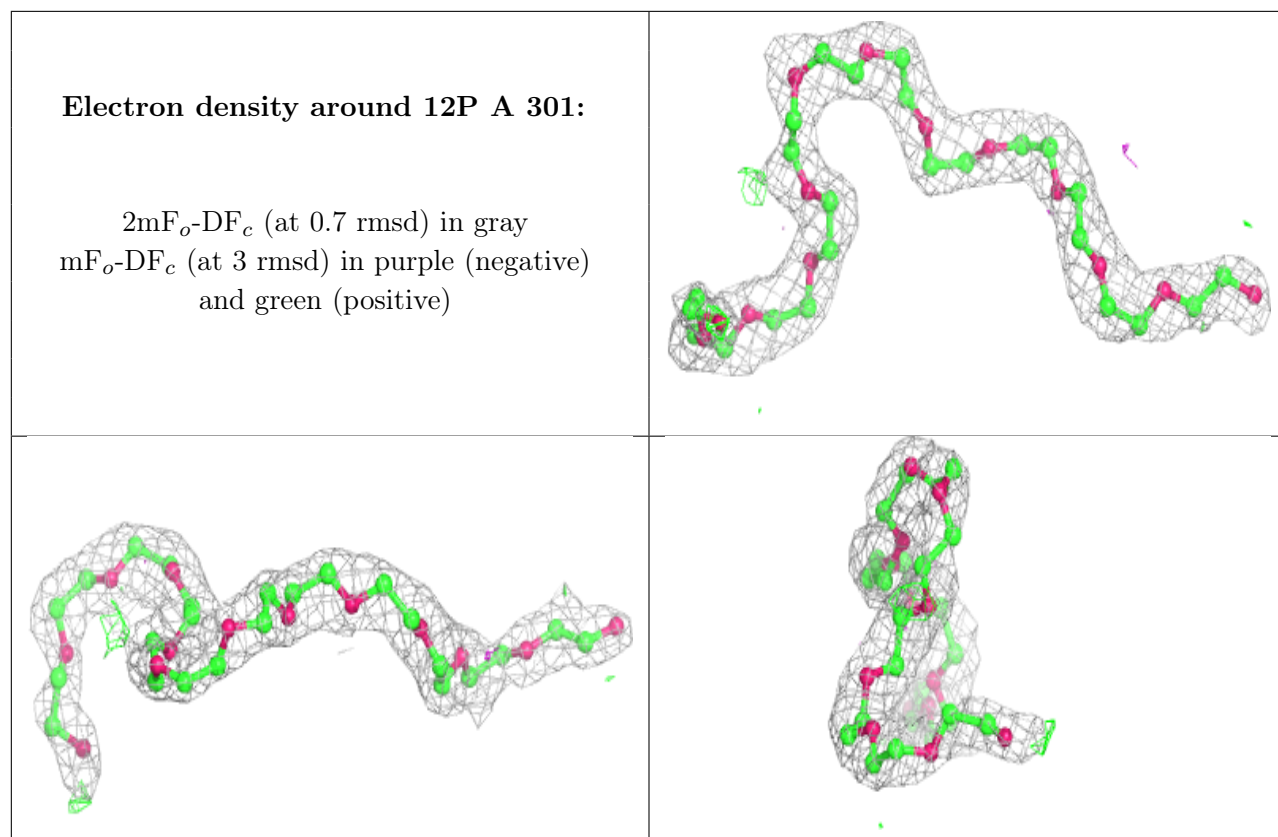
Mol	Type	Chain	Res	Atoms	RSCC	RSR	B-factors(Å <sup>2</sup> )	Q<0.9
6	PGE	A	303	10/10	0.84	0.19	50,58,69,70	0
6	PGE	A	304	10/10	0.87	0.25	58,64,73,73	0
5	PE8	A	302	25/25	0.88	0.18	33,42,80,82	0
7	PEG	A	305	7/7	0.88	0.18	54,61,65,66	0
8	PG4	A	306	13/13	0.88	0.18	35,49,68,70	0
4	12P	A	301	37/37	0.90	0.17	33,45,67,68	0
10	1PE	B	101	16/16	0.91	0.19	41,53,68,72	0
9	ACT	A	307	4/4	0.97	0.08	42,46,46,55	0

The following is a graphical depiction of the model fit to experimental electron density of all instances of the Ligand of Interest. In addition, ligands with molecular weight > 250 and outliers as shown on the geometry validation Tables will also be included. Each fit is shown from different orientation to approximate a three-dimensional view.

### Electron density around PE8 A 302:

2mF<sub>o</sub>-DF<sub>c</sub> (at 0.7 rmsd) in gray  
mF<sub>o</sub>-DF<sub>c</sub> (at 3 rmsd) in purple (negative)  
and green (positive)





## 6.5 Other polymers [i](#)

There are no such residues in this entry.