



Full wwPDB X-ray Structure Validation Report ⓘ

Aug 7, 2020 – 03:06 PM BST

PDB ID : 3SCW
Title : Crystal Structure of Rice BGlu1 E386G/Y341A Mutant Complexed with Cel-
lotetraose
Authors : Pengthaisong, S.; Withers, S.G.; Kuaprasert, B.; Ketudat Cairns, J.R.
Deposited on : 2011-06-08
Resolution : 1.90 Å(reported)

This is a Full wwPDB X-ray Structure Validation Report for a publicly released PDB entry.

We welcome your comments at validation@mail.wwpdb.org

A user guide is available at

<https://www.wwpdb.org/validation/2017/XrayValidationReportHelp>

with specific help available everywhere you see the ⓘ symbol.

The following versions of software and data (see [references ⓘ](#)) were used in the production of this report:

MolProbity : 4.02b-467
Mogul : 1.8.5 (274361), CSD as541be (2020)
Xtriage (Phenix) : 1.13
EDS : 2.13.1
Percentile statistics : 20191225.v01 (using entries in the PDB archive December 25th 2019)
Refmac : 5.8.0158
CCP4 : 7.0.044 (Gargrove)
Ideal geometry (proteins) : Engh & Huber (2001)
Ideal geometry (DNA, RNA) : Parkinson et al. (1996)
Validation Pipeline (wwPDB-VP) : 2.13.1

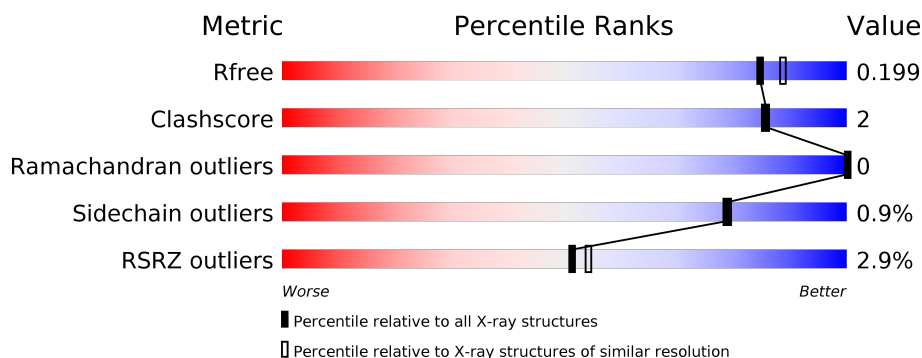
1 Overall quality at a glance

The following experimental techniques were used to determine the structure:

X-RAY DIFFRACTION

The reported resolution of this entry is 1.90 Å.

Percentile scores (ranging between 0-100) for global validation metrics of the entry are shown in the following graphic. The table shows the number of entries on which the scores are based.



Metric	Whole archive (#Entries)	Similar resolution (#Entries, resolution range(Å))
R_{free}	130704	6207 (1.90-1.90)
Clashscore	141614	6847 (1.90-1.90)
Ramachandran outliers	138981	6760 (1.90-1.90)
Sidechain outliers	138945	6760 (1.90-1.90)
RSRZ outliers	127900	6082 (1.90-1.90)

The table below summarises the geometric issues observed across the polymeric chains and their fit to the electron density. The red, orange, yellow and green segments on the lower bar indicate the fraction of residues that contain outliers for ≥ 3 , 2, 1 and 0 types of geometric quality criteria respectively. A grey segment represents the fraction of residues that are not modelled. The numeric value for each fraction is indicated below the corresponding segment, with a dot representing fractions $\leq 5\%$. The upper red bar (where present) indicates the fraction of residues that have poor fit to the electron density. The numeric value is given above the bar.

Mol	Chain	Length	Quality of chain
1	A	481	<div> <div>2%</div> <div> <div></div> <div>94%</div> <div>5%</div> <div></div> </div> <div>• •</div> </div>
1	B	481	<div> <div>3%</div> <div> <div></div> <div>93%</div> <div>5%</div> <div></div> </div> <div>•</div> </div>
2	C	4	<div> <div>25%</div> <div>75%</div> </div>
2	D	4	<div> <div>25%</div> <div>75%</div> </div>
2	E	4	<div> <div>25%</div> <div>75%</div> </div>

The following table lists non-polymeric compounds, carbohydrate monomers and non-standard residues in protein, DNA, RNA chains that are outliers for geometric or electron-density-fit criteria:

Mol	Type	Chain	Res	Chirality	Geometry	Clashes	Electron density
2	BGC	C	1	-	-	-	X
2	BGC	D	1	-	-	-	X

2 Entry composition

There are 6 unique types of molecules in this entry. The entry contains 8666 atoms, of which 0 are hydrogens and 0 are deuteriums.

In the tables below, the ZeroOcc column contains the number of atoms modelled with zero occupancy, the AltConf column contains the number of residues with at least one atom in alternate conformation and the Trace column contains the number of residues modelled with at most 2 atoms.

- Molecule 1 is a protein called Beta-glucosidase 7.

Mol	Chain	Residues	Atoms					ZeroOcc	AltConf	Trace
1	A	472	Total	C	N	O	S	0	0	0
			3797	2441	655	688	13			
1	B	472	Total	C	N	O	S	0	0	0
			3797	2441	655	688	13			

There are 16 discrepancies between the modelled and reference sequences:

Chain	Residue	Modelled	Actual	Comment	Reference
A	-4	ALA	-	expression tag	UNP Q75I93
A	-3	MET	-	expression tag	UNP Q75I93
A	-2	ALA	-	expression tag	UNP Q75I93
A	-1	ASP	-	expression tag	UNP Q75I93
A	0	VAL	-	expression tag	UNP Q75I93
A	24	VAL	ALA	SEE REMARK 999	UNP Q75I93
A	341	ALA	TYR	engineered mutation	UNP Q75I93
A	386	GLY	GLU	engineered mutation	UNP Q75I93
B	-4	ALA	-	expression tag	UNP Q75I93
B	-3	MET	-	expression tag	UNP Q75I93
B	-2	ALA	-	expression tag	UNP Q75I93
B	-1	ASP	-	expression tag	UNP Q75I93
B	0	VAL	-	expression tag	UNP Q75I93
B	24	VAL	ALA	SEE REMARK 999	UNP Q75I93
B	341	ALA	TYR	engineered mutation	UNP Q75I93
B	386	GLY	GLU	engineered mutation	UNP Q75I93

- Molecule 2 is an oligosaccharide called beta-D-glucopyranose-(1-4)-beta-D-glucopyranose-(1-4)-beta-D-glucopyranose-(1-4)-beta-D-glucopyranose.

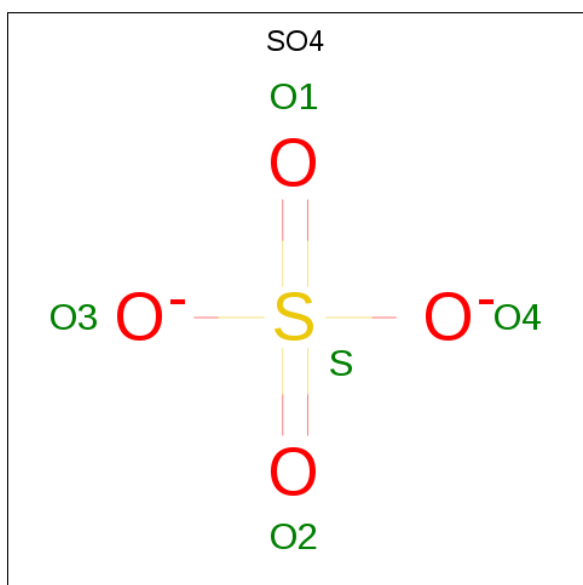


Mol	Chain	Residues	Atoms			ZeroOcc	AltConf	Trace
2	C	4	Total	C	O	0	0	0
			45	24	21			
2	D	4	Total	C	O	0	0	0
			45	24	21			
2	E	4	Total	C	O	0	0	0
			45	24	21			

- Molecule 3 is ZINC ION (three-letter code: ZN) (formula: Zn).

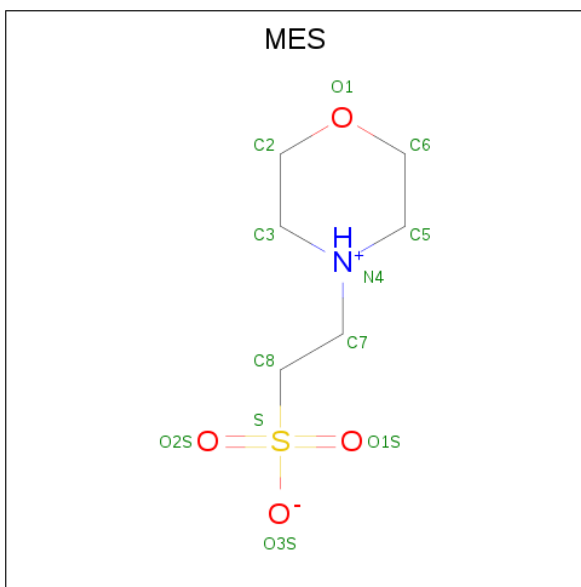
Mol	Chain	Residues	Atoms		ZeroOcc	AltConf
3	A	1	Total	Zn	0	0
			1	1		

- Molecule 4 is SULFATE ION (three-letter code: SO4) (formula: O₄S).



Mol	Chain	Residues	Atoms			ZeroOcc	AltConf
4	A	1	Total	O	S	0	0
			5	4	1		
4	B	1	Total	O	S	0	0
			5	4	1		

- Molecule 5 is 2-(N-MORPHOLINO)-ETHANESULFONIC ACID (three-letter code: MES) (formula: C₆H₁₃NO₄S).



Mol	Chain	Residues	Atoms					ZeroOcc	AltConf
5	A	1	Total	C	N	O	S	0	0
			12	6	1	4	1		
5	B	1	Total	C	N	O	S	0	0
			12	6	1	4	1		

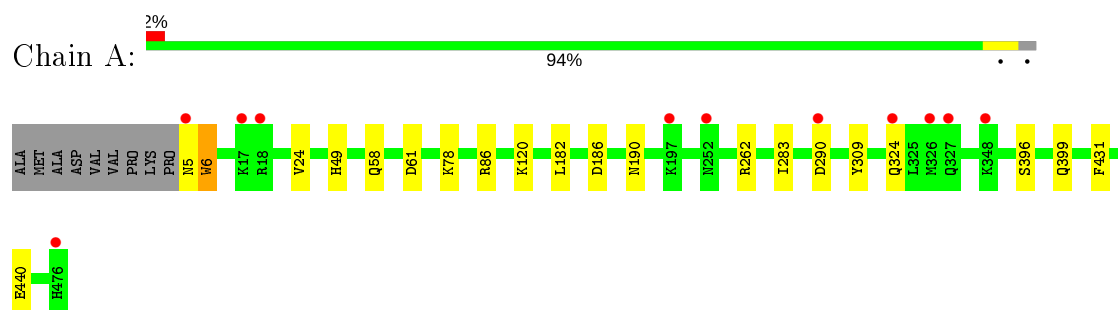
- Molecule 6 is water.

Mol	Chain	Residues	Atoms		ZeroOcc	AltConf
6	A	447	Total	O	0	0
			447	447		
6	B	455	Total	O	0	0
			455	455		

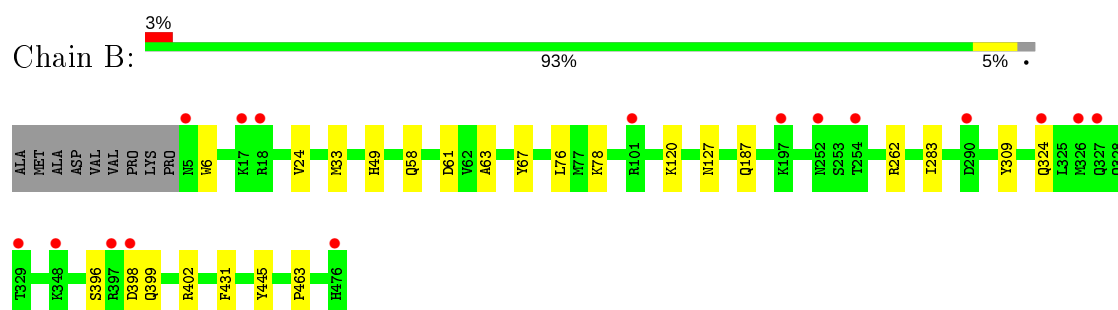
3 Residue-property plots [i](#)

These plots are drawn for all protein, RNA, DNA and oligosaccharide chains in the entry. The first graphic for a chain summarises the proportions of the various outlier classes displayed in the second graphic. The second graphic shows the sequence view annotated by issues in geometry and electron density. Residues are color-coded according to the number of geometric quality criteria for which they contain at least one outlier: green = 0, yellow = 1, orange = 2 and red = 3 or more. A red dot above a residue indicates a poor fit to the electron density ($RSRZ > 2$). Stretches of 2 or more consecutive residues without any outlier are shown as a green connector. Residues present in the sample, but not in the model, are shown in grey.

- Molecule 1: Beta-glucosidase 7



- Molecule 1: Beta-glucosidase 7



- Molecule 2: beta-D-glucopyranose-(1-4)-beta-D-glucopyranose-(1-4)-beta-D-glucopyranose-(1-4)-beta-D-glucopyranose



- Molecule 2: beta-D-glucopyranose-(1-4)-beta-D-glucopyranose-(1-4)-beta-D-glucopyranose-(1-4)-beta-D-glucopyranose



- Molecule 2: beta-D-glucopyranose-(1-4)-beta-D-glucopyranose-(1-4)-beta-D-glucopyranose-(1-4)-beta-D-glucopyranose

Chain E:  25% 75%

 EG01
EG02
EG03
EG04

4 Data and refinement statistics

Property	Value	Source
Space group	P 21 21 21	Depositor
Cell constants a, b, c, α , β , γ	79.33Å 101.33Å 127.41Å 90.00° 90.00° 90.00°	Depositor
Resolution (Å)	23.54 – 1.90 23.17 – 1.90	Depositor EDS
% Data completeness (in resolution range)	99.1 (23.54-1.90) 99.1 (23.17-1.90)	Depositor EDS
R_{merge}	(Not available)	Depositor
R_{sym}	0.11	Depositor
$\langle I/\sigma(I) \rangle$ ¹	3.53 (at 1.90Å)	Xtriage
Refinement program	REFMAC 5.5.0110	Depositor
R, R_{free}	0.169 , 0.198 0.171 , 0.199	Depositor DCC
R_{free} test set	3935 reflections (4.89%)	wwPDB-VP
Wilson B-factor (Å ²)	12.9	Xtriage
Anisotropy	0.086	Xtriage
Bulk solvent k_{sol} (e/Å ³), B_{sol} (Å ²)	0.42 , 54.9	EDS
L-test for twinning ²	$\langle L \rangle = 0.51$, $\langle L^2 \rangle = 0.35$	Xtriage
Estimated twinning fraction	No twinning to report.	Xtriage
F_o, F_c correlation	0.96	EDS
Total number of atoms	8666	wwPDB-VP
Average B, all atoms (Å ²)	12.0	wwPDB-VP

Xtriage's analysis on translational NCS is as follows: *The analyses of the Patterson function reveals a significant off-origin peak that is 50.50 % of the origin peak, indicating pseudo-translational symmetry. The chance of finding a peak of this or larger height randomly in a structure without pseudo-translational symmetry is equal to 6.4151e-05. The detected translational NCS is most likely also responsible for the elevated intensity ratio.*

¹ Intensities estimated from amplitudes.

² Theoretical values of $\langle |L| \rangle$, $\langle L^2 \rangle$ for acentric reflections are 0.5, 0.333 respectively for untwinned datasets, and 0.375, 0.2 for perfectly twinned datasets.

5 Model quality

5.1 Standard geometry

Bond lengths and bond angles in the following residue types are not validated in this section: ZN, BGC, SO4, MES

The Z score for a bond length (or angle) is the number of standard deviations the observed value is removed from the expected value. A bond length (or angle) with $|Z| > 5$ is considered an outlier worth inspection. RMSZ is the root-mean-square of all Z scores of the bond lengths (or angles).

Mol	Chain	Bond lengths		Bond angles	
		RMSZ	$\# Z > 5$	RMSZ	$\# Z > 5$
1	A	0.50	0/3912	0.56	0/5317
1	B	0.50	0/3912	0.56	0/5317
All	All	0.50	0/7824	0.56	0/10634

There are no bond length outliers.

There are no bond angle outliers.

There are no chirality outliers.

There are no planarity outliers.

5.2 Too-close contacts

In the following table, the Non-H and H(model) columns list the number of non-hydrogen atoms and hydrogen atoms in the chain respectively. The H(added) column lists the number of hydrogen atoms added and optimized by MolProbity. The Clashes column lists the number of clashes within the asymmetric unit, whereas Symm-Clashes lists symmetry related clashes.

Mol	Chain	Non-H	H(model)	H(added)	Clashes	Symm-Clashes
1	A	3797	0	3637	19	0
1	B	3797	0	3637	14	0
2	C	45	0	39	0	0
2	D	45	0	39	4	0
2	E	45	0	39	0	0
3	A	1	0	0	0	0
4	A	5	0	0	0	0
4	B	5	0	0	0	0
5	A	12	0	12	0	0
5	B	12	0	12	0	0
6	A	447	0	0	4	0

Continued on next page...

Continued from previous page...

Mol	Chain	Non-H	H(model)	H(added)	Clashes	Symm-Clashes
6	B	455	0	0	3	0
All	All	8666	0	7415	33	0

The all-atom clashscore is defined as the number of clashes found per 1000 atoms (including hydrogen atoms). The all-atom clashscore for this structure is 2.

All (33) close contacts within the same asymmetric unit are listed below, sorted by their clash magnitude.

Atom-1	Atom-2	Interatomic distance (Å)	Clash overlap (Å)
1:A:5:ASN:ND2	2:D:1:BGC:H3	1.41	1.33
1:A:5:ASN:HD22	2:D:1:BGC:H3	1.04	0.88
1:A:5:ASN:HD22	2:D:1:BGC:C3	1.92	0.78
1:A:396:SER:H	1:A:399:GLN:HE21	1.44	0.64
1:B:396:SER:H	1:B:399:GLN:HE21	1.46	0.63
1:A:24:VAL:HG22	1:A:431:PHE:HB3	1.89	0.55
1:B:24:VAL:HG22	1:B:431:PHE:HB3	1.88	0.54
1:B:24:VAL:CG2	1:B:431:PHE:HB3	2.39	0.53
1:A:396:SER:H	1:A:399:GLN:NE2	2.09	0.51
1:A:49:HIS:HE1	1:A:61:ASP:OD1	1.93	0.51
1:B:262:ARG:HG2	1:B:283:ILE:HG12	1.93	0.50
1:A:190:ASN:ND2	6:A:835:HOH:O	2.44	0.50
1:B:49:HIS:HE1	1:B:61:ASP:OD1	1.95	0.50
1:B:396:SER:H	1:B:399:GLN:NE2	2.08	0.49
1:A:24:VAL:CG2	1:A:431:PHE:HB3	2.43	0.48
1:A:78:LYS:HD2	1:A:120:LYS:HE3	1.95	0.48
1:A:262:ARG:HG2	1:A:283:ILE:HG12	1.95	0.47
1:A:290:ASP:HB2	6:A:551:HOH:O	2.15	0.46
1:B:78:LYS:HD2	1:B:120:LYS:HE3	1.97	0.45
1:A:182:LEU:O	1:A:186:ASP:HB3	2.18	0.44
1:B:49:HIS:HD2	6:B:850:HOH:O	2.01	0.43
1:B:58:GLN:NE2	6:B:724:HOH:O	2.52	0.43
1:B:33:MET:HG3	1:B:67:TYR:CD2	2.54	0.43
1:A:78:LYS:HE2	6:A:575:HOH:O	2.20	0.42
1:B:398:ASP:HB3	1:B:402:ARG:NH1	2.34	0.42
1:A:58:GLN:NE2	6:A:729:HOH:O	2.52	0.42
1:B:187:GLN:NE2	6:B:832:HOH:O	2.52	0.41
1:A:5:ASN:ND2	1:A:6:TRP:H	2.18	0.41
1:A:5:ASN:HB2	2:D:1:BGC:H1	2.02	0.41
1:A:440:GLU:O	1:A:440:GLU:HG3	2.20	0.41
1:B:63:ALA:HA	1:B:445:TYR:OH	2.21	0.41
1:B:76:LEU:HD11	1:B:463:PRO:HG3	2.03	0.40

Continued on next page...

Continued from previous page...

Atom-1	Atom-2	Interatomic distance (Å)	Clash overlap (Å)
1:A:24:VAL:HG13	1:A:86:ARG:HB3	2.02	0.40

There are no symmetry-related clashes.

5.3 Torsion angles [i](#)

5.3.1 Protein backbone [i](#)

In the following table, the Percentiles column shows the percent Ramachandran outliers of the chain as a percentile score with respect to all X-ray entries followed by that with respect to entries of similar resolution.

The Analysed column shows the number of residues for which the backbone conformation was analysed, and the total number of residues.

Mol	Chain	Analysed	Favoured	Allowed	Outliers	Percentiles	
1	A	470/481 (98%)	456 (97%)	14 (3%)	0	100	100
1	B	470/481 (98%)	457 (97%)	13 (3%)	0	100	100
All	All	940/962 (98%)	913 (97%)	27 (3%)	0	100	100

There are no Ramachandran outliers to report.

5.3.2 Protein sidechains [i](#)

In the following table, the Percentiles column shows the percent sidechain outliers of the chain as a percentile score with respect to all X-ray entries followed by that with respect to entries of similar resolution.

The Analysed column shows the number of residues for which the sidechain conformation was analysed, and the total number of residues.

Mol	Chain	Analysed	Rotameric	Outliers	Percentiles	
1	A	388/395 (98%)	385 (99%)	3 (1%)	81	82
1	B	388/395 (98%)	384 (99%)	4 (1%)	76	76
All	All	776/790 (98%)	769 (99%)	7 (1%)	78	79

All (7) residues with a non-rotameric sidechain are listed below:

Mol	Chain	Res	Type
1	A	6	TRP
1	A	309	TYR
1	A	324	GLN
1	B	6	TRP
1	B	127	ASN
1	B	309	TYR
1	B	324	GLN

Some sidechains can be flipped to improve hydrogen bonding and reduce clashes. All (13) such sidechains are listed below:

Mol	Chain	Res	Type
1	A	49	HIS
1	A	58	GLN
1	A	119	GLN
1	A	187	GLN
1	A	353	GLN
1	A	399	GLN
1	A	462	HIS
1	B	49	HIS
1	B	58	GLN
1	B	119	GLN
1	B	187	GLN
1	B	399	GLN
1	B	462	HIS

5.3.3 RNA [i](#)

There are no RNA molecules in this entry.

5.4 Non-standard residues in protein, DNA, RNA chains [i](#)

There are no non-standard protein/DNA/RNA residues in this entry.

5.5 Carbohydrates [i](#)

12 monosaccharides are modelled in this entry.

In the following table, the Counts columns list the number of bonds (or angles) for which Mogul statistics could be retrieved, the number of bonds (or angles) that are observed in the model and the number of bonds (or angles) that are defined in the Chemical Component Dictionary. The Link column lists molecule types, if any, to which the group is linked. The Z score for a bond

length (or angle) is the number of standard deviations the observed value is removed from the expected value. A bond length (or angle) with $|Z| > 2$ is considered an outlier worth inspection. RMSZ is the root-mean-square of all Z scores of the bond lengths (or angles).

Mol	Type	Chain	Res	Link	Bond lengths			Bond angles		
					Counts	RMSZ	# $ Z > 2$	Counts	RMSZ	# $ Z > 2$
2	BGC	C	1	2	12,12,12	0.48	0	17,17,17	0.66	0
2	BGC	C	2	2	11,11,12	0.22	0	15,15,17	1.04	1 (6%)
2	BGC	C	3	2	11,11,12	0.29	0	15,15,17	1.03	1 (6%)
2	BGC	C	4	2	11,11,12	0.57	0	15,15,17	1.41	2 (13%)
2	BGC	D	1	2	12,12,12	0.66	0	17,17,17	1.04	0
2	BGC	D	2	2	11,11,12	0.43	0	15,15,17	1.06	1 (6%)
2	BGC	D	3	2	11,11,12	0.33	0	15,15,17	0.76	0
2	BGC	D	4	2	11,11,12	0.37	0	15,15,17	0.72	1 (6%)
2	BGC	E	1	2	12,12,12	0.49	0	17,17,17	0.63	0
2	BGC	E	2	2	11,11,12	0.30	0	15,15,17	1.03	1 (6%)
2	BGC	E	3	2	11,11,12	0.35	0	15,15,17	1.30	2 (13%)
2	BGC	E	4	2	11,11,12	0.68	0	15,15,17	1.37	3 (20%)

In the following table, the Chirals column lists the number of chiral outliers, the number of chiral centers analysed, the number of these observed in the model and the number defined in the Chemical Component Dictionary. Similar counts are reported in the Torsion and Rings columns. '-' means no outliers of that kind were identified.

Mol	Type	Chain	Res	Link	Chirals	Torsions	Rings
2	BGC	C	1	2	-	0/2/22/22	0/1/1/1
2	BGC	C	2	2	-	0/2/19/22	0/1/1/1
2	BGC	C	3	2	-	0/2/19/22	0/1/1/1
2	BGC	C	4	2	-	0/2/19/22	0/1/1/1
2	BGC	D	1	2	-	1/2/22/22	0/1/1/1
2	BGC	D	2	2	-	0/2/19/22	0/1/1/1
2	BGC	D	3	2	-	0/2/19/22	0/1/1/1
2	BGC	D	4	2	-	2/2/19/22	0/1/1/1
2	BGC	E	1	2	-	0/2/22/22	0/1/1/1
2	BGC	E	2	2	-	0/2/19/22	0/1/1/1
2	BGC	E	3	2	-	0/2/19/22	0/1/1/1
2	BGC	E	4	2	-	2/2/19/22	0/1/1/1

There are no bond length outliers.

All (12) bond angle outliers are listed below:

Mol	Chain	Res	Type	Atoms	Z	Observed(°)	Ideal(°)
2	E	3	BGC	C1-O5-C5	3.53	116.97	112.19
2	C	4	BGC	C1-O5-C5	3.12	116.42	112.19
2	C	2	BGC	C1-O5-C5	2.78	115.95	112.19
2	E	2	BGC	C1-O5-C5	2.77	115.95	112.19
2	D	2	BGC	C1-O5-C5	2.77	115.94	112.19
2	E	4	BGC	C1-O5-C5	2.50	115.59	112.19
2	E	4	BGC	C2-C3-C4	-2.31	106.89	110.89
2	E	4	BGC	O5-C5-C6	2.30	110.81	107.20
2	C	4	BGC	C2-C3-C4	-2.22	107.06	110.89
2	E	3	BGC	O4-C4-C5	-2.21	103.81	109.30
2	C	3	BGC	O4-C4-C5	-2.20	103.83	109.30
2	D	4	BGC	C1-O5-C5	2.13	115.08	112.19

There are no chirality outliers.

All (5) torsion outliers are listed below:

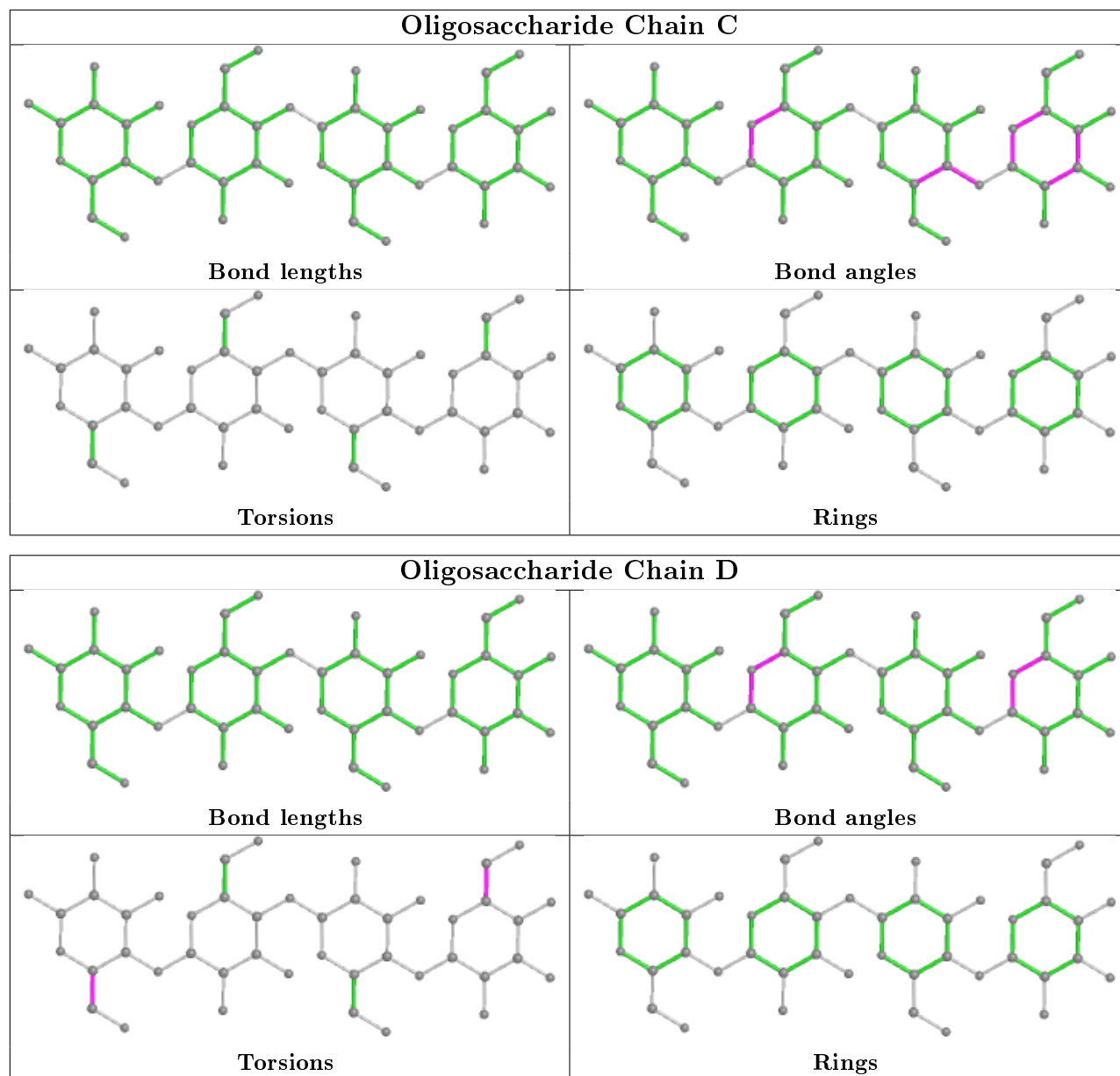
Mol	Chain	Res	Type	Atoms
2	D	4	BGC	C4-C5-C6-O6
2	D	4	BGC	O5-C5-C6-O6
2	E	4	BGC	O5-C5-C6-O6
2	E	4	BGC	C4-C5-C6-O6
2	D	1	BGC	C4-C5-C6-O6

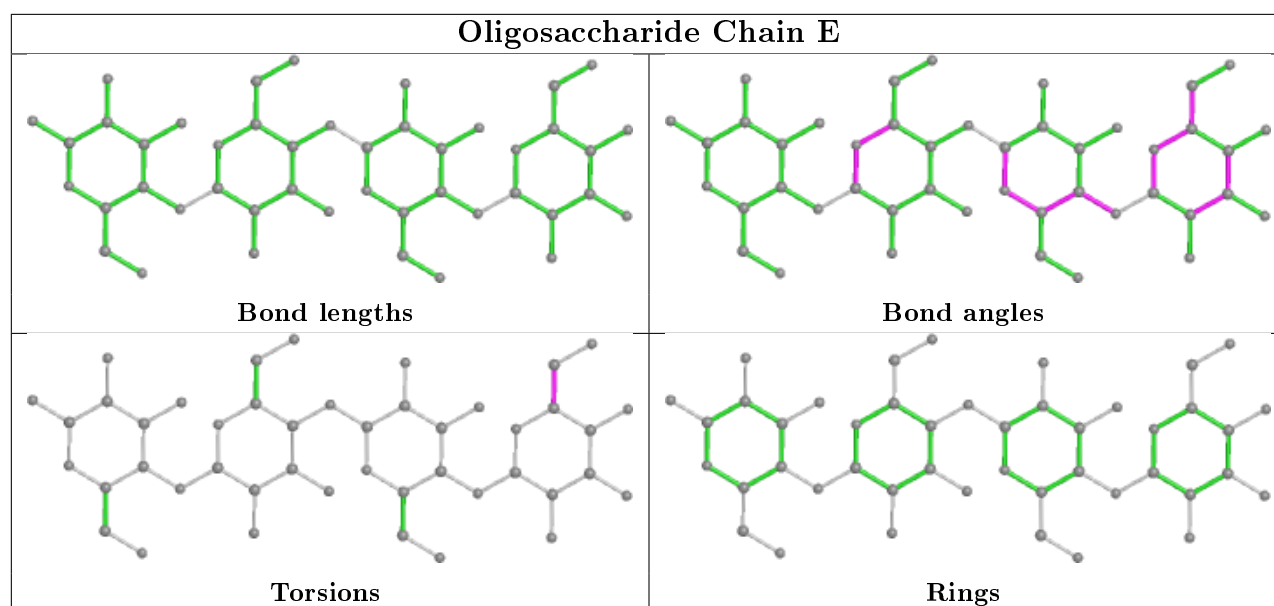
There are no ring outliers.

1 monomer is involved in 4 short contacts:

Mol	Chain	Res	Type	Clashes	Symm-Clashes
2	D	1	BGC	4	0

The following is a two-dimensional graphical depiction of Mogul quality analysis of bond lengths, bond angles, torsion angles, and ring geometry for oligosaccharide.





5.6 Ligand geometry [i](#)

Of 5 ligands modelled in this entry, 1 is monoatomic - leaving 4 for Mogul analysis.

In the following table, the Counts columns list the number of bonds (or angles) for which Mogul statistics could be retrieved, the number of bonds (or angles) that are observed in the model and the number of bonds (or angles) that are defined in the Chemical Component Dictionary. The Link column lists molecule types, if any, to which the group is linked. The Z score for a bond length (or angle) is the number of standard deviations the observed value is removed from the expected value. A bond length (or angle) with $|Z| > 2$ is considered an outlier worth inspection. RMSZ is the root-mean-square of all Z scores of the bond lengths (or angles).

Mol	Type	Chain	Res	Link	Bond lengths			Bond angles		
					Counts	RMSZ	$\# Z > 2$	Counts	RMSZ	$\# Z > 2$
4	SO4	B	1004	-	4,4,4	0.16	0	6,6,6	0.12	0
5	MES	B	1006	-	12,12,12	1.67	1 (8%)	14,16,16	6.63	8 (57%)
4	SO4	A	1003	-	4,4,4	0.20	0	6,6,6	0.20	0
5	MES	A	1005	-	12,12,12	1.66	1 (8%)	14,16,16	6.76	7 (50%)

In the following table, the Chirals column lists the number of chiral outliers, the number of chiral centers analysed, the number of these observed in the model and the number defined in the Chemical Component Dictionary. Similar counts are reported in the Torsion and Rings columns. '-' means no outliers of that kind were identified.

Mol	Type	Chain	Res	Link	Chirals	Torsions	Rings
5	MES	B	1006	-	-	1/6/14/14	0/1/1/1
5	MES	A	1005	-	-	1/6/14/14	0/1/1/1

All (2) bond length outliers are listed below:

Mol	Chain	Res	Type	Atoms	Z	Observed(Å)	Ideal(Å)
5	B	1006	MES	C8-S	-5.30	1.70	1.77
5	A	1005	MES	C8-S	-5.23	1.70	1.77

All (15) bond angle outliers are listed below:

Mol	Chain	Res	Type	Atoms	Z	Observed(°)	Ideal(°)
5	B	1006	MES	O1S-S-C8	-16.13	87.49	106.92
5	A	1005	MES	O1S-S-C8	-14.52	89.43	106.92
5	A	1005	MES	O2S-S-C8	-14.48	89.48	106.92
5	B	1006	MES	O2S-S-C8	-12.73	91.59	106.92
5	A	1005	MES	O3S-S-C8	-11.20	87.65	105.77
5	B	1006	MES	O3S-S-C8	-8.71	91.69	105.77
5	B	1006	MES	C5-N4-C3	6.35	123.12	108.83
5	B	1006	MES	O3S-S-O1S	6.31	126.68	111.27
5	A	1005	MES	C5-N4-C3	6.07	122.50	108.83
5	A	1005	MES	O3S-S-O2S	5.14	123.83	111.27
5	A	1005	MES	C7-N4-C5	4.08	121.68	111.23
5	B	1006	MES	C7-N4-C5	3.97	121.39	111.23
5	B	1006	MES	C2-C3-N4	3.08	114.77	110.10
5	B	1006	MES	O2S-S-O1S	2.72	123.36	113.95
5	A	1005	MES	O2S-S-O1S	2.17	121.44	113.95

There are no chirality outliers.

All (2) torsion outliers are listed below:

Mol	Chain	Res	Type	Atoms
5	B	1006	MES	C8-C7-N4-C5
5	A	1005	MES	C8-C7-N4-C5

There are no ring outliers.

No monomer is involved in short contacts.

5.7 Other polymers

There are no such residues in this entry.

5.8 Polymer linkage issues

There are no chain breaks in this entry.

6 Fit of model and data

6.1 Protein, DNA and RNA chains

In the following table, the column labelled ‘#RSRZ> 2’ contains the number (and percentage) of RSRZ outliers, followed by percent RSRZ outliers for the chain as percentile scores relative to all X-ray entries and entries of similar resolution. The OWAB column contains the minimum, median, 95th percentile and maximum values of the occupancy-weighted average B-factor per residue. The column labelled ‘Q< 0.9’ lists the number of (and percentage) of residues with an average occupancy less than 0.9.

Mol	Chain	Analysed	<RSRZ>	#RSRZ>2	OWAB(Å ²)	Q<0.9
1	A	472/481 (98%)	-0.17	11 (2%) 60 63	5, 10, 20, 35	0
1	B	472/481 (98%)	-0.17	16 (3%) 45 48	5, 10, 20, 35	0
All	All	944/962 (98%)	-0.17	27 (2%) 51 54	5, 10, 20, 35	0

All (27) RSRZ outliers are listed below:

Mol	Chain	Res	Type	RSRZ
1	B	476	HIS	6.7
1	B	327	GLN	4.4
1	B	5	ASN	4.2
1	B	324	GLN	4.1
1	A	5	ASN	4.0
1	A	476	HIS	3.9
1	A	197	LYS	3.8
1	B	326	MET	3.8
1	A	324	GLN	3.6
1	B	17	LYS	3.5
1	A	252	ASN	3.3
1	A	327	GLN	3.2
1	B	197	LYS	3.1
1	A	326	MET	2.6
1	A	290	ASP	2.6
1	A	18	ARG	2.5
1	B	18	ARG	2.5
1	B	398	ASP	2.4
1	B	101	ARG	2.4
1	B	290	ASP	2.4
1	A	17	LYS	2.3
1	B	329	THR	2.3
1	B	254	THR	2.3
1	B	252	ASN	2.2

Continued on next page...

Continued from previous page...

Mol	Chain	Res	Type	RSRZ
1	A	348	LYS	2.1
1	B	348	LYS	2.1
1	B	397	ARG	2.1

6.2 Non-standard residues in protein, DNA, RNA chains [i](#)

There are no non-standard protein/DNA/RNA residues in this entry.

6.3 Carbohydrates [i](#)

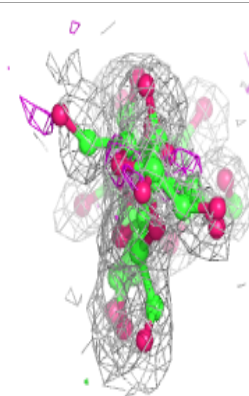
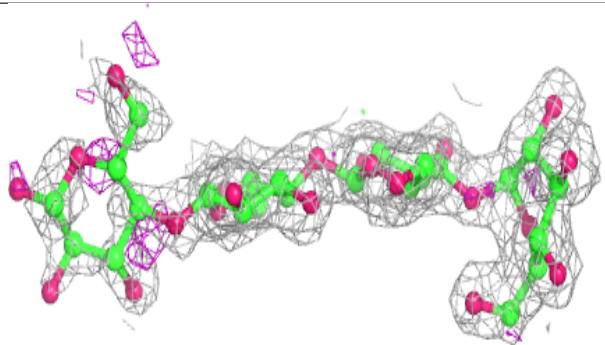
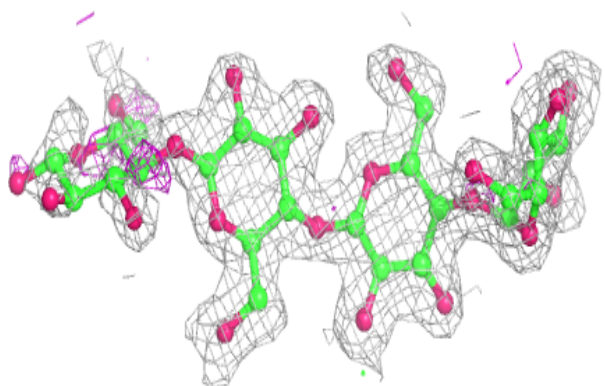
In the following table, the Atoms column lists the number of modelled atoms in the group and the number defined in the chemical component dictionary. The B-factors column lists the minimum, median, 95th percentile and maximum values of B factors of atoms in the group. The column labelled 'Q< 0.9' lists the number of atoms with occupancy less than 0.9.

Mol	Type	Chain	Res	Atoms	RSCC	RSR	B-factors(\AA^2)	Q<0.9
2	BGC	E	1	12/12	0.68	0.36	34,41,43,43	0
2	BGC	D	1	12/12	0.68	0.41	39,43,44,45	0
2	BGC	C	1	12/12	0.68	0.44	34,40,42,42	0
2	BGC	D	4	11/12	0.84	0.25	29,31,32,33	0
2	BGC	D	3	11/12	0.85	0.20	30,31,32,33	0
2	BGC	D	2	11/12	0.86	0.17	32,34,35,36	0
2	BGC	E	4	11/12	0.89	0.15	14,19,21,21	0
2	BGC	C	2	11/12	0.90	0.13	24,26,29,30	0
2	BGC	E	2	11/12	0.90	0.14	25,26,28,30	0
2	BGC	C	3	11/12	0.91	0.14	20,21,22,23	0
2	BGC	E	3	11/12	0.93	0.15	23,23,24,25	0
2	BGC	C	4	11/12	0.94	0.16	10,18,20,20	0

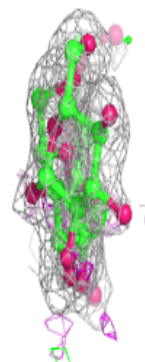
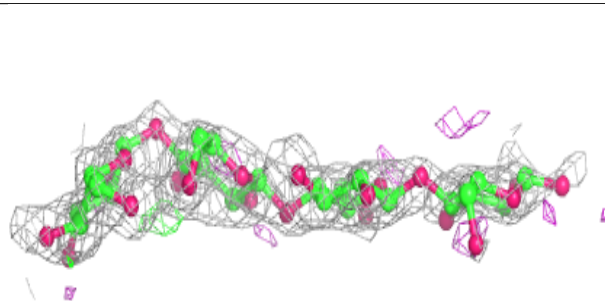
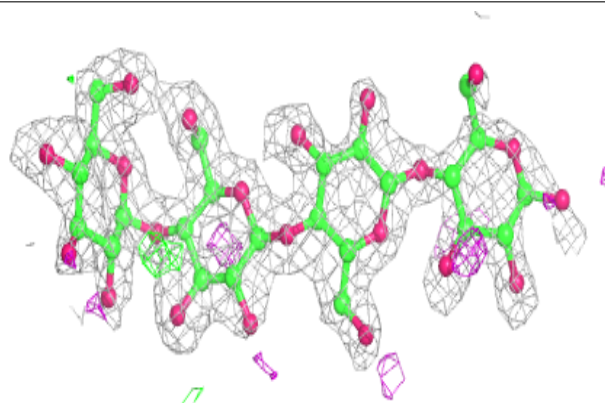
The following is a graphical depiction of the model fit to experimental electron density for oligosaccharide. Each fit is shown from different orientation to approximate a three-dimensional view.

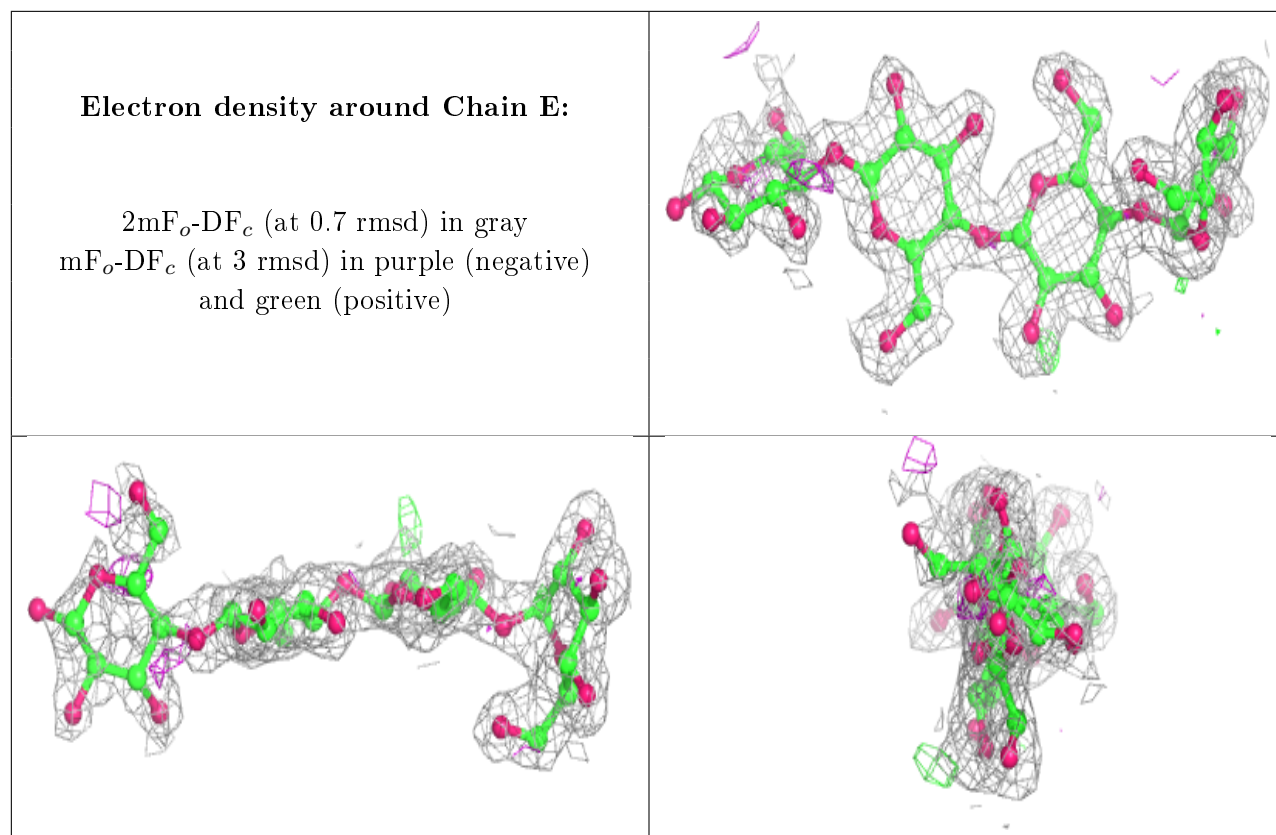
Electron density around Chain C:

$2mF_o-DF_c$ (at 0.7 rmsd) in gray
 mF_o-DF_c (at 3 rmsd) in purple (negative)
and green (positive)

**Electron density around Chain D:**

$2mF_o-DF_c$ (at 0.7 rmsd) in gray
 mF_o-DF_c (at 3 rmsd) in purple (negative)
and green (positive)





6.4 Ligands [i](#)

In the following table, the Atoms column lists the number of modelled atoms in the group and the number defined in the chemical component dictionary. The B-factors column lists the minimum, median, 95th percentile and maximum values of B factors of atoms in the group. The column labelled 'Q< 0.9' lists the number of atoms with occupancy less than 0.9.

Mol	Type	Chain	Res	Atoms	RSCC	RSR	B-factors(Å ²)	Q<0.9
5	MES	A	1005	12/12	0.91	0.19	23,27,29,29	0
5	MES	B	1006	12/12	0.93	0.16	22,25,27,27	0
4	SO4	B	1004	5/5	0.98	0.11	29,30,30,31	0
4	SO4	A	1003	5/5	0.99	0.15	24,24,25,25	0
3	ZN	A	1001	1/1	1.00	0.03	7,7,7,7	0

6.5 Other polymers [i](#)

There are no such residues in this entry.