



Full wwPDB X-ray Structure Validation Report ⓘ

Aug 7, 2020 – 11:32 AM BST

PDB ID : 3SE3
Title : human IFNa2-IFNAR ternary complex
Authors : Thomas, C.; Garcia, K.C.
Deposited on : 2011-06-10
Resolution : 4.00 Å(reported)

This is a Full wwPDB X-ray Structure Validation Report for a publicly released PDB entry.

We welcome your comments at validation@mail.wwpdb.org

A user guide is available at

<https://www.wwpdb.org/validation/2017/XrayValidationReportHelp>

with specific help available everywhere you see the ⓘ symbol.

The following versions of software and data (see [references ⓘ](#)) were used in the production of this report:

MolProbity : 4.02b-467
Mogul : 1.8.5 (274361), CSD as541be (2020)
Xtriage (Phenix) : 1.13
EDS : 2.13.1
Percentile statistics : 20191225.v01 (using entries in the PDB archive December 25th 2019)
Refmac : 5.8.0158
CCP4 : 7.0.044 (Gargrove)
Ideal geometry (proteins) : Engh & Huber (2001)
Ideal geometry (DNA, RNA) : Parkinson et al. (1996)
Validation Pipeline (wwPDB-VP) : 2.13.1

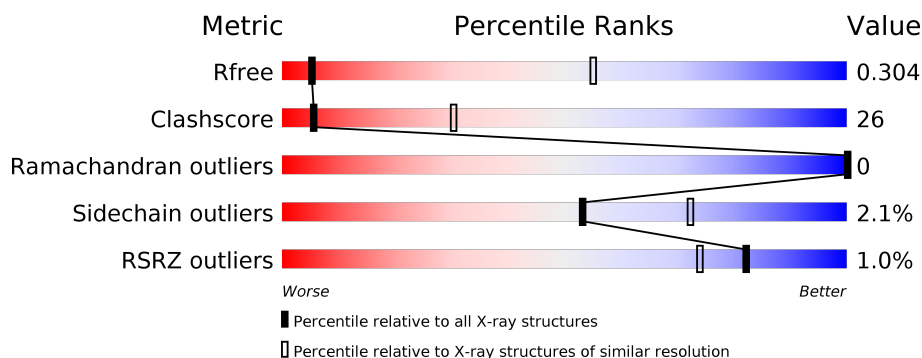
1 Overall quality at a glance

The following experimental techniques were used to determine the structure:

X-RAY DIFFRACTION

The reported resolution of this entry is 4.00 Å.

Percentile scores (ranging between 0-100) for global validation metrics of the entry are shown in the following graphic. The table shows the number of entries on which the scores are based.



Metric	Whole archive (#Entries)	Similar resolution (#Entries, resolution range(Å))
R_{free}	130704	1087 (4.30-3.70)
Clashscore	141614	1148 (4.30-3.70)
Ramachandran outliers	138981	1108 (4.30-3.70)
Sidechain outliers	138945	1099 (4.30-3.70)
RSRZ outliers	127900	1028 (4.34-3.66)

The table below summarises the geometric issues observed across the polymeric chains and their fit to the electron density. The red, orange, yellow and green segments on the lower bar indicate the fraction of residues that contain outliers for ≥ 3 , 2, 1 and 0 types of geometric quality criteria respectively. A grey segment represents the fraction of residues that are not modelled. The numeric value for each fraction is indicated below the corresponding segment, with a dot representing fractions $\leq 5\%$. The upper red bar (where present) indicates the fraction of residues that have poor fit to the electron density. The numeric value is given above the bar.

Mol	Chain	Length	Quality of chain
1	A	414	<div> <div></div> <div> <div></div> <div>38%</div> <div>29%</div> <div>•</div> <div>31%</div> </div> </div>
2	B	166	<div> <div>57%</div> <div>19%</div> <div>•</div> <div>23%</div> </div>
3	C	199	<div> <div>60%</div> <div>32%</div> <div>8%</div> </div>

2 Entry composition

There are 4 unique types of molecules in this entry. The entry contains 4462 atoms, of which 0 are hydrogens and 0 are deuteriums.

In the tables below, the ZeroOcc column contains the number of atoms modelled with zero occupancy, the AltConf column contains the number of residues with at least one atom in alternate conformation and the Trace column contains the number of residues modelled with at most 2 atoms.

- Molecule 1 is a protein called Interferon alpha/beta receptor 1.

Mol	Chain	Residues	Atoms					ZeroOcc	AltConf	Trace
1	A	285	Total	C	N	O	S	0	0	0
			2025	1297	336	383	9			

There are 5 discrepancies between the modelled and reference sequences:

Chain	Residue	Modelled	Actual	Comment	Reference
A	-4	ALA	-	cloning artifact	UNP P17181
A	-3	ASP	-	cloning artifact	UNP P17181
A	-2	LEU	-	cloning artifact	UNP P17181
A	-1	GLY	-	cloning artifact	UNP P17181
A	0	SER	-	cloning artifact	UNP P17181

- Molecule 2 is a protein called Interferon alpha 2b.

Mol	Chain	Residues	Atoms					ZeroOcc	AltConf	Trace
2	B	128	Total	C	N	O	S	0	0	0
			1006	647	160	192	7			

There are 3 discrepancies between the modelled and reference sequences:

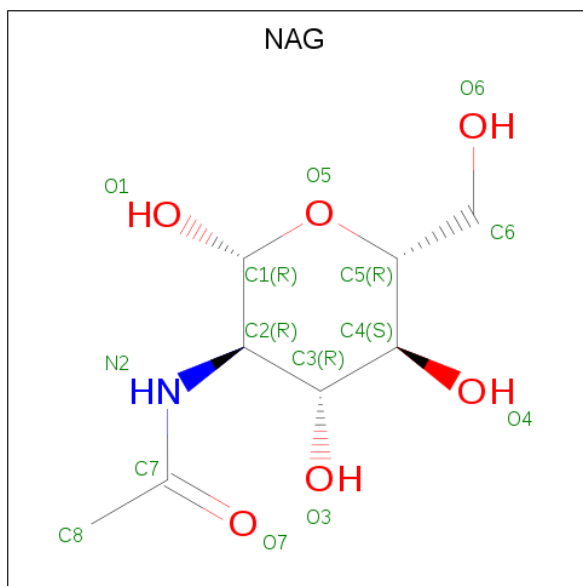
Chain	Residue	Modelled	Actual	Comment	Reference
B	57	TYR	HIS	engineered mutation	UNP Q86UP4
B	58	ASN	GLU	engineered mutation	UNP Q86UP4
B	61	SER	GLN	engineered mutation	UNP Q86UP4

- Molecule 3 is a protein called Interferon alpha/beta receptor 2.

Mol	Chain	Residues	Atoms					ZeroOcc	AltConf	Trace
3	C	183	Total	C	N	O	S	0	0	0
			1417	912	226	270	9			

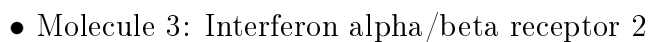
- Molecule 4 is 2-acetamido-2-deoxy-beta-D-glucopyranose (three-letter code: NAG) (formula:

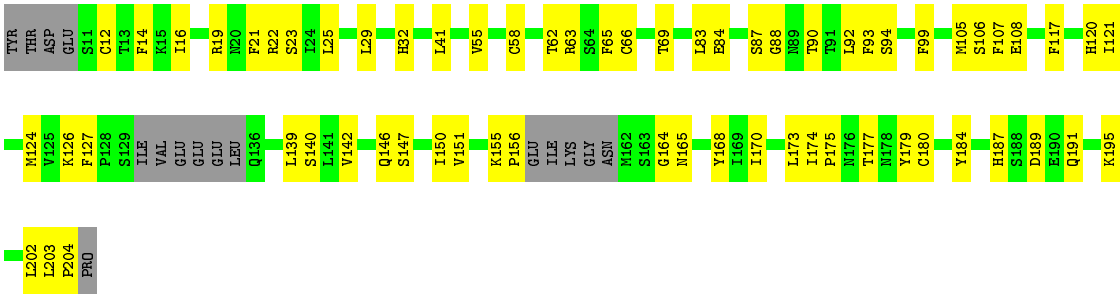
C₈H₁₅NO₆).



Mol	Chain	Residues	Atoms				ZeroOcc	AltConf
4	A	1	Total	C	N	O	0	0
			14	8	1	5		

- Molecule 1: Interferon alpha/beta receptor 1





4 Data and refinement statistics

Property	Value	Source
Space group	P 61 2 2	Depositor
Cell constants a, b, c, α , β , γ	93.37Å 93.37Å 401.50Å 90.00° 90.00° 120.00°	Depositor
Resolution (Å)	46.78 – 4.00 46.78 – 4.00	Depositor EDS
% Data completeness (in resolution range)	99.8 (46.78-4.00) 99.9 (46.78-4.00)	Depositor EDS
R_{merge}	(Not available)	Depositor
R_{sym}	0.17	Depositor
$\langle I/\sigma(I) \rangle$ ¹	2.87 (at 4.00Å)	Xtriage
Refinement program	PHENIX	Depositor
R, R_{free}	0.251 , 0.311 0.249 , 0.304	Depositor DCC
R_{free} test set	477 reflections (5.00%)	wwPDB-VP
Wilson B-factor (Å ²)	137.0	Xtriage
Anisotropy	0.001	Xtriage
Bulk solvent k_{sol} (e/Å ³), B_{sol} (Å ²)	0.34 , 157.8	EDS
L-test for twinning ²	$\langle L \rangle = 0.45$, $\langle L^2 \rangle = 0.28$	Xtriage
Estimated twinning fraction	No twinning to report.	Xtriage
F_o, F_c correlation	0.90	EDS
Total number of atoms	4462	wwPDB-VP
Average B, all atoms (Å ²)	161.0	wwPDB-VP

Xtriage's analysis on translational NCS is as follows: *The largest off-origin peak in the Patterson function is 3.02% of the height of the origin peak. No significant pseudotranslation is detected.*

¹Intensities estimated from amplitudes.

²Theoretical values of $\langle |L| \rangle$, $\langle L^2 \rangle$ for acentric reflections are 0.5, 0.333 respectively for untwinned datasets, and 0.375, 0.2 for perfectly twinned datasets.

5 Model quality

5.1 Standard geometry

Bond lengths and bond angles in the following residue types are not validated in this section:
NAG

The Z score for a bond length (or angle) is the number of standard deviations the observed value is removed from the expected value. A bond length (or angle) with $|Z| > 5$ is considered an outlier worth inspection. RMSZ is the root-mean-square of all Z scores of the bond lengths (or angles).

Mol	Chain	Bond lengths		Bond angles	
		RMSZ	# Z >5	RMSZ	# Z >5
1	A	0.47	0/2075	0.88	8/2854 (0.3%)
2	B	0.48	0/1026	0.75	2/1389 (0.1%)
3	C	0.47	0/1452	0.89	3/1980 (0.2%)
All	All	0.47	0/4553	0.86	13/6223 (0.2%)

There are no bond length outliers.

All (13) bond angle outliers are listed below:

Mol	Chain	Res	Type	Atoms	Z	Observed(°)	Ideal(°)
1	A	69	VAL	N-CA-CB	-6.40	97.42	111.50
3	C	191	GLN	N-CA-CB	6.21	121.77	110.60
1	A	122	GLY	N-CA-C	-6.18	97.66	113.10
1	A	67	LEU	N-CA-C	5.79	126.62	111.00
1	A	179	LEU	CA-CB-CG	5.75	128.52	115.30
2	B	99	VAL	CB-CA-C	-5.29	101.35	111.40
2	B	130	LEU	CA-CB-CG	-5.25	103.23	115.30
3	C	65	PHE	C-N-CA	-5.25	108.59	121.70
1	A	278	LEU	CA-CB-CG	-5.16	103.44	115.30
1	A	13	ILE	CB-CA-C	-5.14	101.32	111.60
3	C	23	SER	N-CA-CB	-5.10	102.85	110.50
1	A	119	ILE	CB-CA-C	-5.05	101.51	111.60
1	A	140	LEU	CA-CB-CG	-5.00	103.79	115.30

There are no chirality outliers.

There are no planarity outliers.

5.2 Too-close contacts ⓘ

In the following table, the Non-H and H(model) columns list the number of non-hydrogen atoms and hydrogen atoms in the chain respectively. The H(added) column lists the number of hydrogen atoms added and optimized by MolProbity. The Clashes column lists the number of clashes within the asymmetric unit, whereas Symm-Clashes lists symmetry related clashes.

Mol	Chain	Non-H	H(model)	H(added)	Clashes	Symm-Clashes
1	A	2025	0	1671	126	0
2	B	1006	0	931	33	0
3	C	1417	0	1327	60	0
4	A	14	0	13	4	0
All	All	4462	0	3942	215	0

The all-atom clashscore is defined as the number of clashes found per 1000 atoms (including hydrogen atoms). The all-atom clashscore for this structure is 26.

All (215) close contacts within the same asymmetric unit are listed below, sorted by their clash magnitude.

Atom-1	Atom-2	Interatomic distance (Å)	Clash overlap (Å)
1:A:145:ASN:HD21	4:A:410:NAG:C1	1.39	1.35
3:C:29:LEU:HB3	3:C:32:HIS:HD2	1.22	1.05
1:A:118:HIS:HA	1:A:159:ARG:HG2	1.45	0.98
3:C:19:ARG:HG2	3:C:108:GLU:HG3	1.46	0.96
1:A:18:PHE:CE1	1:A:62:PHE:CE2	2.56	0.93
1:A:18:PHE:O	1:A:59:LYS:HA	1.71	0.89
1:A:101:ILE:HA	1:A:129:TRP:HZ2	1.38	0.88
1:A:111:GLU:O	1:A:196:THR:HB	1.74	0.88
1:A:101:ILE:HA	1:A:129:TRP:CZ2	2.07	0.88
1:A:174:LYS:HE3	1:A:188:TYR:CG	2.10	0.86
3:C:29:LEU:HB3	3:C:32:HIS:CD2	2.13	0.81
1:A:217:TYR:CE1	1:A:268:GLN:HA	2.16	0.80
2:B:116:ILE:HG13	2:B:117:LEU:N	1.98	0.78
3:C:22:ARG:HE	3:C:69:THR:CB	1.98	0.77
1:A:46:TRP:HB3	1:A:76:ARG:NH2	2.00	0.75
1:A:18:PHE:CZ	1:A:62:PHE:CE2	2.76	0.72
1:A:176:LYS:HD3	1:A:188:TYR:CZ	2.23	0.72
1:A:63:SER:O	1:A:64:SER:HB3	1.88	0.72
1:A:120:SER:HB2	1:A:121:PRO:HD2	1.71	0.71
1:A:216:ASN:HA	1:A:267:PRO:HA	1.74	0.70
3:C:88:GLY:C	3:C:90:THR:H	1.95	0.70
3:C:173:LEU:CB	3:C:203:LEU:HD11	2.22	0.70
3:C:170:ILE:HG22	3:C:173:LEU:HD21	1.74	0.70

Continued on next page...

Continued from previous page...

Atom-1	Atom-2	Interatomic distance (Å)	Clash overlap (Å)
2:B:81:LEU:O	2:B:84:PHE:HB3	1.92	0.69
1:A:55:ILE:HD12	1:A:56:THR:H	1.58	0.68
1:A:259:VAL:HG11	1:A:264:CYS:HB3	1.75	0.67
2:B:122:TYR:HA	2:B:125:ARG:CZ	2.25	0.67
1:A:43:MET:SD	1:A:46:TRP:CZ2	2.88	0.66
3:C:173:LEU:HB2	3:C:203:LEU:HD11	1.77	0.66
1:A:173:LEU:C	1:A:173:LEU:HD12	2.16	0.66
3:C:105:MET:HG3	3:C:106:SER:N	2.11	0.66
1:A:145:ASN:CG	4:A:410:NAG:C1	2.64	0.66
1:A:176:LYS:HB3	1:A:188:TYR:CD1	2.31	0.65
1:A:217:TYR:HB2	1:A:266:PHE:O	1.97	0.64
3:C:25:LEU:O	3:C:66:CYS:N	2.25	0.64
3:C:84:GLU:HG2	3:C:94:SER:HB3	1.79	0.64
1:A:254:PRO:O	1:A:257:GLU:HG2	1.97	0.63
3:C:146:GLN:HB3	3:C:180:CYS:O	1.99	0.63
1:A:205:PRO:HB3	1:A:221:TRP:CD1	2.33	0.63
3:C:22:ARG:HE	3:C:69:THR:HB	1.64	0.62
1:A:150:GLU:O	1:A:150:GLU:HG3	1.99	0.62
2:B:41:GLU:H	2:B:41:GLU:CD	2.02	0.62
3:C:124:MET:SD	3:C:165:ASN:HB3	2.40	0.62
3:C:21:PHE:O	3:C:22:ARG:HD2	2.00	0.61
1:A:124:LYS:O	1:A:125:ASP:HB2	2.00	0.61
1:A:62:PHE:CD1	1:A:62:PHE:O	2.52	0.61
2:B:130:LEU:HD11	2:B:143:VAL:HG21	1.81	0.61
3:C:139:LEU:HD23	3:C:187:HIS:HA	1.83	0.61
1:A:140:LEU:HD23	1:A:156:ILE:HD13	1.83	0.60
3:C:41:LEU:O	3:C:55:VAL:HG12	2.01	0.60
3:C:117:PHE:C	3:C:204:PRO:HD2	2.22	0.60
1:A:298:ASP:OD1	1:A:298:ASP:O	2.20	0.60
3:C:184:TYR:CE1	3:C:195:LYS:NZ	2.68	0.59
1:A:17:ASN:OD1	1:A:61:ASN:HB2	2.03	0.58
1:A:174:LYS:HE3	1:A:188:TYR:CD1	2.39	0.58
1:A:46:TRP:CB	1:A:76:ARG:NH2	2.67	0.58
3:C:25:LEU:HD23	3:C:41:LEU:HD11	1.84	0.58
1:A:145:ASN:HD21	4:A:410:NAG:C2	2.11	0.57
1:A:18:PHE:CE1	1:A:62:PHE:CZ	2.92	0.57
1:A:143:TRP:HD1	1:A:144:LYS:O	1.88	0.57
1:A:221:TRP:HZ2	1:A:230:PHE:CD2	2.23	0.57
3:C:177:THR:C	3:C:202:LEU:HD13	2.24	0.57
3:C:87:SER:H	3:C:92:LEU:CD1	2.19	0.56
1:A:142:ILE:HG13	1:A:172:CYS:O	2.06	0.55

Continued on next page...

Continued from previous page...

Atom-1	Atom-2	Interatomic distance (Å)	Clash overlap (Å)
1:A:12:ASP:HA	1:A:98:LYS:HD3	1.88	0.55
1:A:160:HIS:CD2	1:A:161:LYS:H	2.24	0.55
1:A:119:ILE:HG21	1:A:138:TYR:CE1	2.41	0.55
2:B:121:LYS:O	2:B:124:GLN:HB3	2.07	0.55
1:A:182:SER:C	1:A:184:LYS:H	2.10	0.55
3:C:120:HIS:HA	3:C:173:LEU:HD12	1.88	0.54
3:C:173:LEU:HB3	3:C:203:LEU:HD11	1.87	0.54
3:C:87:SER:N	3:C:92:LEU:CD1	2.70	0.54
1:A:110:ALA:HB2	1:A:194:ILE:CD1	2.38	0.54
1:A:230:PHE:HA	1:A:281:GLN:O	2.07	0.54
1:A:163:TYR:O	1:A:165:LEU:HD13	2.07	0.54
1:A:160:HIS:CD2	1:A:161:LYS:N	2.76	0.54
3:C:12:CYS:HB3	3:C:29:LEU:HD23	1.90	0.54
1:A:46:TRP:CB	1:A:76:ARG:HH22	2.21	0.54
1:A:157:TYR:CD1	1:A:241:ARG:HG3	2.43	0.54
1:A:176:LYS:HD3	1:A:188:TYR:CE2	2.42	0.54
1:A:160:HIS:HD2	1:A:161:LYS:H	1.55	0.53
1:A:75:LEU:HB2	1:A:90:VAL:HB	1.91	0.53
1:A:139:SER:CB	1:A:154:GLU:HA	2.38	0.53
1:A:237:ALA:CB	1:A:275:ILE:HG22	2.38	0.53
3:C:12:CYS:HB3	3:C:29:LEU:CD2	2.39	0.53
3:C:55:VAL:HG13	3:C:58:CYS:HB2	1.89	0.53
3:C:117:PHE:O	3:C:204:PRO:HD2	2.08	0.53
1:A:113:LYS:O	1:A:165:LEU:HB2	2.09	0.52
3:C:62:THR:HG23	3:C:63:ARG:N	2.25	0.52
1:A:221:TRP:CZ2	1:A:230:PHE:CG	2.98	0.52
2:B:52:THR:HG23	2:B:56:LEU:HD13	1.92	0.52
1:A:182:SER:O	1:A:184:LYS:N	2.43	0.52
1:A:137:THR:CG2	1:A:155:ASN:HA	2.41	0.51
1:A:299:THR:O	1:A:300:GLU:OE1	2.29	0.51
1:A:145:ASN:OD1	4:A:410:NAG:C1	2.58	0.51
1:A:143:TRP:HB3	1:A:150:GLU:HA	1.92	0.51
1:A:182:SER:C	1:A:184:LYS:N	2.61	0.51
1:A:179:LEU:C	1:A:181:THR:N	2.64	0.51
3:C:156:PRO:HG3	3:C:168:TYR:CD1	2.46	0.51
1:A:173:LEU:HD12	1:A:173:LEU:O	2.11	0.50
1:A:134:LEU:HD12	2:B:64:PHE:CD2	2.46	0.50
1:A:134:LEU:HD21	1:A:242:ASN:HA	1.91	0.50
1:A:129:TRP:HA	1:A:129:TRP:HE3	1.76	0.50
2:B:27:PHE:HD2	2:B:30:LEU:HD12	1.75	0.50
1:A:73:ILE:O	1:A:92:SER:HA	2.10	0.50

Continued on next page...

Continued from previous page...

Atom-1	Atom-2	Interatomic distance (Å)	Clash overlap (Å)
1:A:129:TRP:HA	1:A:129:TRP:CE3	2.46	0.50
1:A:134:LEU:HD13	1:A:134:LEU:O	2.12	0.50
1:A:86:SER:HB2	1:A:88:TYR:CE2	2.47	0.50
3:C:88:GLY:C	3:C:90:THR:N	2.62	0.50
1:A:221:TRP:HZ2	1:A:230:PHE:CG	2.29	0.50
3:C:62:THR:CG2	3:C:63:ARG:N	2.75	0.49
1:A:138:TYR:HB2	1:A:156:ILE:CG1	2.43	0.49
1:A:157:TYR:HD1	1:A:241:ARG:HG3	1.78	0.49
2:B:122:TYR:HA	2:B:125:ARG:NH2	2.28	0.49
2:B:155:THR:O	2:B:155:THR:HG22	2.12	0.49
1:A:179:LEU:C	1:A:181:THR:H	2.14	0.49
1:A:279:ARG:HG3	1:A:291:TRP:CZ3	2.48	0.48
2:B:60:ILE:HG23	2:B:88:LEU:HD22	1.95	0.48
1:A:259:VAL:HG11	1:A:264:CYS:CB	2.43	0.48
2:B:42:GLU:HB2	2:B:43:PHE:CE2	2.49	0.48
3:C:151:VAL:O	3:C:151:VAL:HG23	2.13	0.48
3:C:83:LEU:O	3:C:94:SER:HA	2.14	0.48
1:A:145:ASN:HB2	1:A:170:THR:HG22	1.96	0.48
1:A:111:GLU:HG2	1:A:290:PHE:CE1	2.48	0.48
3:C:184:TYR:HB3	3:C:195:LYS:HA	1.95	0.48
1:A:20:LEU:N	1:A:20:LEU:HD23	2.28	0.48
3:C:25:LEU:HD23	3:C:41:LEU:CD1	2.44	0.48
1:A:142:ILE:HG12	1:A:143:TRP:N	2.28	0.47
3:C:22:ARG:NE	3:C:69:THR:HB	2.29	0.47
1:A:101:ILE:HB	1:A:186:GLY:HA3	1.94	0.47
1:A:158:SER:CB	1:A:243:PRO:HB3	2.45	0.47
3:C:87:SER:N	3:C:92:LEU:HD11	2.29	0.47
3:C:126:LYS:HE2	3:C:126:LYS:HB3	1.52	0.47
1:A:143:TRP:CD1	1:A:148:GLY:HA2	2.50	0.47
3:C:140:SER:OG	3:C:155:LYS:NZ	2.47	0.47
1:A:138:TYR:HB2	1:A:156:ILE:HG13	1.95	0.47
2:B:32:ASP:OD1	2:B:133:LYS:NZ	2.35	0.47
3:C:107:PHE:CD1	3:C:139:LEU:HD11	2.50	0.47
2:B:121:LYS:HD2	2:B:124:GLN:HB3	1.96	0.46
1:A:184:LYS:C	1:A:185:ILE:HG13	2.35	0.46
1:A:282:ALA:O	1:A:289:SER:N	2.46	0.46
1:A:63:SER:O	1:A:64:SER:CB	2.57	0.46
2:B:53:ILE:N	2:B:54:PRO:CD	2.77	0.46
3:C:127:PHE:HB2	3:C:164:GLY:O	2.15	0.46
3:C:92:LEU:O	3:C:93:PHE:HB3	2.15	0.46
1:A:124:LYS:O	1:A:125:ASP:CB	2.64	0.46

Continued on next page...

Continued from previous page...

Atom-1	Atom-2	Interatomic distance (Å)	Clash overlap (Å)
1:A:145:ASN:HB2	1:A:170:THR:O	2.16	0.46
2:B:43:PHE:N	2:B:43:PHE:CD2	2.84	0.46
1:A:237:ALA:HB3	1:A:275:ILE:HG22	1.97	0.46
2:B:80:LEU:O	2:B:81:LEU:C	2.53	0.46
1:A:131:LEU:HB2	2:B:62:GLN:OE1	2.16	0.45
3:C:107:PHE:CE1	3:C:139:LEU:HD11	2.52	0.45
1:A:232:VAL:O	1:A:252:GLN:HG3	2.16	0.45
1:A:142:ILE:O	1:A:150:GLU:HA	2.16	0.45
1:A:110:ALA:HB2	1:A:194:ILE:HD13	1.98	0.45
3:C:21:PHE:O	3:C:22:ARG:CD	2.64	0.45
3:C:87:SER:H	3:C:92:LEU:HD12	1.81	0.45
2:B:22:ARG:HG3	2:B:144:ARG:NH2	2.31	0.45
3:C:121:ILE:HG13	3:C:173:LEU:CD1	2.47	0.45
3:C:174:ILE:HG22	3:C:175:PRO:O	2.17	0.45
1:A:236:HIS:CE1	1:A:276:TYR:CE1	3.05	0.44
2:B:27:PHE:CD2	2:B:30:LEU:HD12	2.53	0.44
1:A:167:PRO:HG2	1:A:199:GLU:HB2	1.99	0.44
1:A:235:LEU:HB2	1:A:250:TRP:CE3	2.51	0.44
2:B:22:ARG:HG3	2:B:144:ARG:HH21	1.81	0.44
3:C:156:PRO:HG3	3:C:168:TYR:CE1	2.53	0.44
1:A:129:TRP:O	1:A:130:ALA:C	2.53	0.44
1:A:112:ASP:CB	1:A:199:GLU:HA	2.48	0.44
1:A:212:VAL:HG23	1:A:216:ASN:O	2.18	0.44
2:B:122:TYR:HB2	2:B:125:ARG:NH2	2.33	0.44
3:C:147:SER:HB3	3:C:179:TYR:CD1	2.53	0.44
1:A:301:ILE:O	1:A:302:GLN:CB	2.65	0.44
2:B:24:ILE:CG1	2:B:141:GLU:HG3	2.48	0.44
1:A:150:GLU:O	1:A:150:GLU:CG	2.65	0.43
1:A:71:GLU:O	1:A:95:PRO:HD2	2.19	0.43
2:B:130:LEU:HA	2:B:130:LEU:HD23	1.86	0.43
3:C:87:SER:H	3:C:92:LEU:HD11	1.83	0.43
1:A:173:LEU:O	1:A:191:VAL:HA	2.18	0.43
1:A:143:TRP:CD1	1:A:144:LYS:O	2.69	0.43
1:A:142:ILE:CG1	1:A:143:TRP:N	2.82	0.43
1:A:140:LEU:CD2	1:A:156:ILE:HD13	2.49	0.43
1:A:119:ILE:HG21	1:A:138:TYR:CD1	2.54	0.43
1:A:101:ILE:HG21	1:A:177:ALA:HB3	2.01	0.43
1:A:238:PHE:CD1	1:A:238:PHE:C	2.92	0.43
1:A:140:LEU:HD12	1:A:140:LEU:C	2.39	0.42
3:C:22:ARG:NE	3:C:69:THR:CB	2.74	0.42
1:A:176:LYS:HB3	1:A:188:TYR:CE1	2.54	0.42

Continued on next page...

Continued from previous page...

Atom-1	Atom-2	Interatomic distance (Å)	Clash overlap (Å)
2:B:60:ILE:CG2	2:B:92:LEU:HD21	2.49	0.42
1:A:18:PHE:CZ	1:A:62:PHE:CD2	3.07	0.42
1:A:200:ASN:CB	1:A:290:PHE:CD2	3.03	0.42
1:A:86:SER:HB2	1:A:88:TYR:HE2	1.84	0.42
2:B:60:ILE:C	2:B:62:GLN:N	2.73	0.42
1:A:139:SER:HB2	1:A:154:GLU:HA	2.01	0.42
3:C:16:ILE:HG23	3:C:16:ILE:O	2.20	0.42
1:A:117:ILE:HG22	1:A:119:ILE:HG13	2.02	0.42
2:B:22:ARG:HB2	2:B:144:ARG:NH2	2.35	0.41
3:C:25:LEU:CD2	3:C:41:LEU:HD11	2.48	0.41
2:B:116:ILE:HG13	2:B:117:LEU:H	1.82	0.41
3:C:142:VAL:HG11	3:C:184:TYR:OH	2.20	0.41
3:C:14:PHE:HB3	3:C:99:PHE:HZ	1.85	0.41
1:A:96:PHE:CE2	2:B:116:ILE:HD11	2.55	0.41
3:C:203:LEU:HA	3:C:204:PRO:HD3	1.74	0.41
1:A:101:ILE:HA	1:A:129:TRP:CH2	2.50	0.41
1:A:276:TYR:N	1:A:276:TYR:CD2	2.88	0.41
1:A:233:GLN:OE1	1:A:279:ARG:NH2	2.46	0.41
2:B:22:ARG:CG	2:B:144:ARG:NH2	2.84	0.41
3:C:105:MET:HG3	3:C:106:SER:H	1.80	0.41
1:A:119:ILE:CG2	1:A:138:TYR:CE1	3.04	0.41
1:A:34:PHE:O	1:A:54:ASN:N	2.54	0.41
3:C:202:LEU:N	3:C:202:LEU:CD2	2.84	0.41
1:A:34:PHE:HA	1:A:78:ARG:O	2.21	0.40
1:A:141:VAL:CG1	1:A:150:GLU:HB2	2.51	0.40
1:A:61:ASN:OD1	1:A:61:ASN:C	2.60	0.40
2:B:116:ILE:O	2:B:120:ARG:N	2.50	0.40
1:A:96:PHE:HE2	2:B:116:ILE:HD11	1.86	0.40

There are no symmetry-related clashes.

5.3 Torsion angles [i](#)

5.3.1 Protein backbone [i](#)

In the following table, the Percentiles column shows the percent Ramachandran outliers of the chain as a percentile score with respect to all X-ray entries followed by that with respect to entries of similar resolution.

The Analysed column shows the number of residues for which the backbone conformation was analysed, and the total number of residues.

Mol	Chain	Analysed	Favoured	Allowed	Outliers	Percentiles	
1	A	279/414 (67%)	259 (93%)	20 (7%)	0	100	100
2	B	122/166 (74%)	118 (97%)	4 (3%)	0	100	100
3	C	177/199 (89%)	168 (95%)	9 (5%)	0	100	100
All	All	578/779 (74%)	545 (94%)	33 (6%)	0	100	100

There are no Ramachandran outliers to report.

5.3.2 Protein sidechains ⓘ

In the following table, the Percentiles column shows the percent sidechain outliers of the chain as a percentile score with respect to all X-ray entries followed by that with respect to entries of similar resolution.

The Analysed column shows the number of residues for which the sidechain conformation was analysed, and the total number of residues.

Mol	Chain	Analysed	Rotameric	Outliers	Percentiles	
1	A	174/382 (46%)	168 (97%)	6 (3%)	37	61
2	B	105/153 (69%)	104 (99%)	1 (1%)	76	86
3	C	158/189 (84%)	156 (99%)	2 (1%)	69	82
All	All	437/724 (60%)	428 (98%)	9 (2%)	53	72

All (9) residues with a non-rotameric sidechain are listed below:

Mol	Chain	Res	Type
1	A	131	LEU
1	A	134	LEU
1	A	146	SER
1	A	149	VAL
1	A	165	LEU
1	A	300	GLU
2	B	116	ILE
3	C	150	ILE
3	C	189	ASP

Some sidechains can be flipped to improve hydrogen bonding and reduce clashes. All (10) such sidechains are listed below:

Mol	Chain	Res	Type
1	A	145	ASN

Continued on next page...

Continued from previous page...

Mol	Chain	Res	Type
1	A	160	HIS
1	A	252	GLN
2	B	34	HIS
2	B	90	GLN
2	B	124	GLN
3	C	20	ASN
3	C	32	HIS
3	C	122	ASN
3	C	165	ASN

5.3.3 RNA [i](#)

There are no RNA molecules in this entry.

5.4 Non-standard residues in protein, DNA, RNA chains [i](#)

There are no non-standard protein/DNA/RNA residues in this entry.

5.5 Carbohydrates [i](#)

There are no monosaccharides in this entry.

5.6 Ligand geometry [i](#)

1 ligand is modelled in this entry.

In the following table, the Counts columns list the number of bonds (or angles) for which Mogul statistics could be retrieved, the number of bonds (or angles) that are observed in the model and the number of bonds (or angles) that are defined in the Chemical Component Dictionary. The Link column lists molecule types, if any, to which the group is linked. The Z score for a bond length (or angle) is the number of standard deviations the observed value is removed from the expected value. A bond length (or angle) with $|Z| > 2$ is considered an outlier worth inspection. RMSZ is the root-mean-square of all Z scores of the bond lengths (or angles).

Mol	Type	Chain	Res	Link	Bond lengths			Bond angles		
					Counts	RMSZ	$\# Z > 2$	Counts	RMSZ	$\# Z > 2$
4	NAG	A	410	1	14,14,15	0.62	0	17,19,21	1.06	2 (11%)

In the following table, the Chirals column lists the number of chiral outliers, the number of chiral centers analysed, the number of these observed in the model and the number defined in the

Chemical Component Dictionary. Similar counts are reported in the Torsion and Rings columns. '-' means no outliers of that kind were identified.

Mol	Type	Chain	Res	Link	Chirals	Torsions	Rings
4	NAG	A	410	1	-	0/6/23/26	0/1/1/1

There are no bond length outliers.

All (2) bond angle outliers are listed below:

Mol	Chain	Res	Type	Atoms	Z	Observed(°)	Ideal(°)
4	A	410	NAG	C1-O5-C5	-3.13	107.95	112.19
4	A	410	NAG	O5-C1-C2	-2.07	108.03	111.29

There are no chirality outliers.

There are no torsion outliers.

There are no ring outliers.

1 monomer is involved in 4 short contacts:

Mol	Chain	Res	Type	Clashes	Symm-Clashes
4	A	410	NAG	4	0

5.7 Other polymers [i](#)

There are no such residues in this entry.

5.8 Polymer linkage issues [i](#)

There are no chain breaks in this entry.

6 Fit of model and data [i](#)

6.1 Protein, DNA and RNA chains [i](#)

In the following table, the column labelled ‘#RSRZ> 2’ contains the number (and percentage) of RSRZ outliers, followed by percent RSRZ outliers for the chain as percentile scores relative to all X-ray entries and entries of similar resolution. The OWAB column contains the minimum, median, 95th percentile and maximum values of the occupancy-weighted average B-factor per residue. The column labelled ‘Q< 0.9’ lists the number of (and percentage) of residues with an average occupancy less than 0.9.

Mol	Chain	Analysed	<RSRZ>	#RSRZ>2	OWAB(Å ²)	Q<0.9
1	A	285/414 (68%)	-0.10	6 (2%) 63 54	92, 168, 270, 345	0
2	B	128/166 (77%)	-0.41	0 100 100	93, 132, 168, 198	0
3	C	183/199 (91%)	-0.12	0 100 100	104, 153, 208, 264	0
All	All	596/779 (76%)	-0.17	6 (1%) 82 74	92, 154, 246, 345	0

All (6) RSRZ outliers are listed below:

Mol	Chain	Res	Type	RSRZ
1	A	245	ASN	5.1
1	A	84	THR	5.0
1	A	11	VAL	3.1
1	A	85	SER	2.6
1	A	32	VAL	2.5
1	A	267	PRO	2.1

6.2 Non-standard residues in protein, DNA, RNA chains [i](#)

There are no non-standard protein/DNA/RNA residues in this entry.

6.3 Carbohydrates [i](#)

There are no monosaccharides in this entry.

6.4 Ligands [i](#)

In the following table, the Atoms column lists the number of modelled atoms in the group and the number defined in the chemical component dictionary. The B-factors column lists the minimum, median, 95th percentile and maximum values of B factors of atoms in the group. The column labelled ‘Q< 0.9’ lists the number of atoms with occupancy less than 0.9.

Mol	Type	Chain	Res	Atoms	RSCC	RSR	B-factors(\AA^2)	Q<0.9
4	NAG	A	410	14/15	0.82	0.21	159,208,221,228	0

6.5 Other polymers [i](#)

There are no such residues in this entry.