



Full wwPDB X-ray Structure Validation Report ⓘ

Apr 9, 2022 – 08:04 AM EDT

PDB ID : 7SKY
Title : Pertussis toxin S1 bound to NAD+
Authors : Littler, D.R.; Beddoe, T.; Pulliainen, A.; Rossjohn, J.
Deposited on : 2021-10-21
Resolution : 1.37 Å(reported)

This is a Full wwPDB X-ray Structure Validation Report for a publicly released PDB entry.

We welcome your comments at validation@mail.wwpdb.org

A user guide is available at

<https://www.wwpdb.org/validation/2017/XrayValidationReportHelp>

with specific help available everywhere you see the ⓘ symbol.

The following versions of software and data (see [references ⓘ](#)) were used in the production of this report:

MolProbity : 4.02b-467
Mogul : 1.8.5 (274361), CSD as541be (2020)
Xtriage (Phenix) : 1.13
EDS : 2.27
buster-report : 1.1.7 (2018)
Percentile statistics : 20191225.v01 (using entries in the PDB archive December 25th 2019)
Refmac : 5.8.0158
CCP4 : 7.0.044 (Gargrove)
Ideal geometry (proteins) : Engh & Huber (2001)
Ideal geometry (DNA, RNA) : Parkinson et al. (1996)
Validation Pipeline (wwPDB-VP) : 2.27

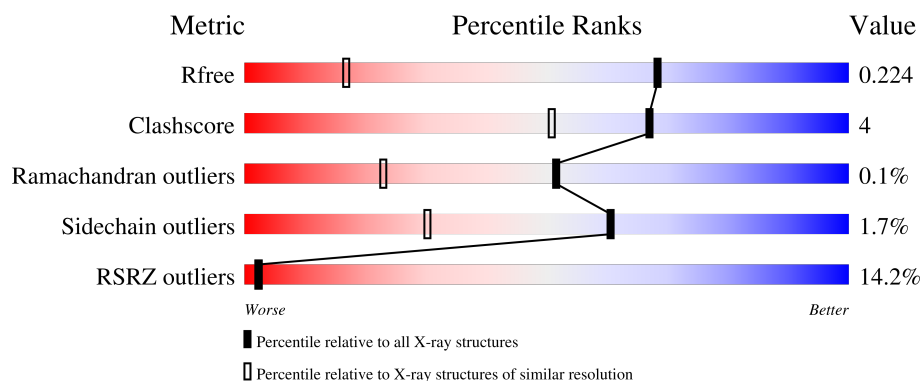
1 Overall quality at a glance

The following experimental techniques were used to determine the structure:

X-RAY DIFFRACTION

The reported resolution of this entry is 1.37 Å.

Percentile scores (ranging between 0-100) for global validation metrics of the entry are shown in the following graphic. The table shows the number of entries on which the scores are based.



Metric	Whole archive (#Entries)	Similar resolution (#Entries, resolution range(Å))
R_{free}	130704	2907 (1.40-1.36)
Clashscore	141614	3037 (1.40-1.36)
Ramachandran outliers	138981	2970 (1.40-1.36)
Sidechain outliers	138945	2969 (1.40-1.36)
RSRZ outliers	127900	2846 (1.40-1.36)

The table below summarises the geometric issues observed across the polymeric chains and their fit to the electron density. The red, orange, yellow and green segments of the lower bar indicate the fraction of residues that contain outliers for ≥ 3 , 2, 1 and 0 types of geometric quality criteria respectively. A grey segment represents the fraction of residues that are not modelled. The numeric value for each fraction is indicated below the corresponding segment, with a dot representing fractions $\leq 5\%$. The upper red bar (where present) indicates the fraction of residues that have poor fit to the electron density. The numeric value is given above the bar.

Mol	Chain	Length	Quality of chain
1	A	184	<div> <div>15%</div> <div>92%</div> <div>• • •</div> </div>
1	B	184	<div> <div>9%</div> <div>89%</div> <div>8% • •</div> </div>
1	C	184	<div> <div>12%</div> <div>90%</div> <div>6% • •</div> </div>
1	D	184	<div> <div>19%</div> <div>89%</div> <div>8% • •</div> </div>

The following table lists non-polymeric compounds, carbohydrate monomers and non-standard

residues in protein, DNA, RNA chains that are outliers for geometric or electron-density-fit criteria:

Mol	Type	Chain	Res	Chirality	Geometry	Clashes	Electron density
2	IOD	B	201	-	-	X	-

2 Entry composition

There are 4 unique types of molecules in this entry. The entry contains 6564 atoms, of which 0 are hydrogens and 0 are deuteriums.

In the tables below, the ZeroOcc column contains the number of atoms modelled with zero occupancy, the AltConf column contains the number of residues with at least one atom in alternate conformation and the Trace column contains the number of residues modelled with at most 2 atoms.

- Molecule 1 is a protein called Pertussis toxin subunit 1.

Mol	Chain	Residues	Atoms					ZeroOcc	AltConf	Trace
1	B	180	Total	C	N	O	S	0	0	0
			1432	883	261	286	2			
1	A	180	Total	C	N	O	S	0	0	0
			1432	883	261	286	2			
1	C	177	Total	C	N	O	S	0	0	0
			1409	869	255	283	2			
1	D	180	Total	C	N	O	S	0	0	0
			1432	883	261	286	2			

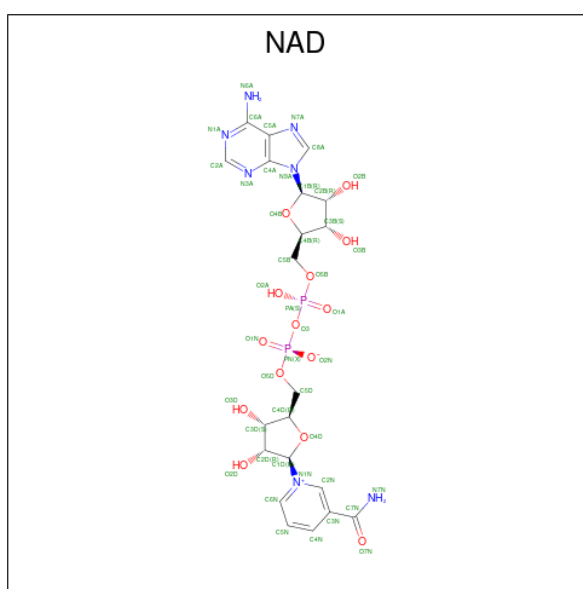
There are 16 discrepancies between the modelled and reference sequences:

Chain	Residue	Modelled	Actual	Comment	Reference
B	-1	GLY	-	expression tag	UNP P04977
B	0	PRO	-	expression tag	UNP P04977
B	1	GLY	-	expression tag	UNP P04977
B	34	GLU	ASP	variant	UNP P04977
A	-1	GLY	-	expression tag	UNP P04977
A	0	PRO	-	expression tag	UNP P04977
A	1	GLY	-	expression tag	UNP P04977
A	34	GLU	ASP	variant	UNP P04977
C	-1	GLY	-	expression tag	UNP P04977
C	0	PRO	-	expression tag	UNP P04977
C	1	GLY	-	expression tag	UNP P04977
C	34	GLU	ASP	variant	UNP P04977
D	-1	GLY	-	expression tag	UNP P04977
D	0	PRO	-	expression tag	UNP P04977
D	1	GLY	-	expression tag	UNP P04977
D	34	GLU	ASP	variant	UNP P04977

- Molecule 2 is IODIDE ION (three-letter code: IOD) (formula: I).

Mol	Chain	Residues	Atoms	ZeroOcc	AltConf
2	B	1	Total I 1 1	0	0
2	A	1	Total I 1 1	0	0
2	C	1	Total I 1 1	0	0
2	D	1	Total I 1 1	0	0

- Molecule 3 is NICOTINAMIDE-ADENINE-DINUCLEOTIDE (three-letter code: NAD) (formula: $C_{21}H_{27}N_7O_{14}P_2$) (labeled as "Ligand of Interest" by depositor).



Mol	Chain	Residues	Atoms	ZeroOcc	AltConf
3	B	1	Total C N O P 44 21 7 14 2	0	0
3	A	1	Total C N O P 44 21 7 14 2	0	0
3	C	1	Total C N O P 44 21 7 14 2	0	0
3	D	1	Total C N O P 44 21 7 14 2	0	0

- Molecule 4 is water.

Mol	Chain	Residues	Atoms	ZeroOcc	AltConf
4	B	180	Total O 180 180	0	0

Continued on next page...

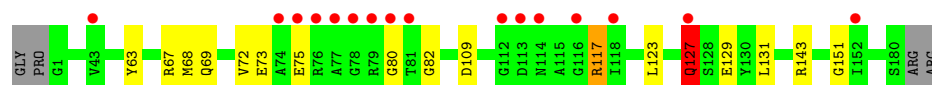
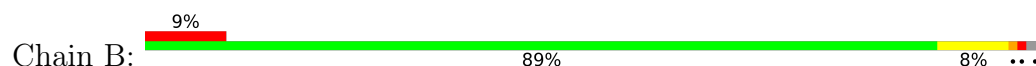
Continued from previous page...

Mol	Chain	Residues	Atoms		ZeroOcc	AltConf
4	A	173	Total 173	O 173	0	0
4	C	172	Total 172	O 172	0	0
4	D	154	Total 154	O 154	0	0

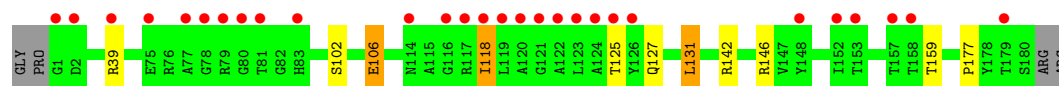
3 Residue-property plots [i](#)

These plots are drawn for all protein, RNA, DNA and oligosaccharide chains in the entry. The first graphic for a chain summarises the proportions of the various outlier classes displayed in the second graphic. The second graphic shows the sequence view annotated by issues in geometry and electron density. Residues are color-coded according to the number of geometric quality criteria for which they contain at least one outlier: green = 0, yellow = 1, orange = 2 and red = 3 or more. A red dot above a residue indicates a poor fit to the electron density ($RSRZ > 2$). Stretches of 2 or more consecutive residues without any outlier are shown as a green connector. Residues present in the sample, but not in the model, are shown in grey.

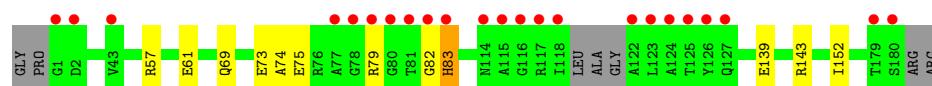
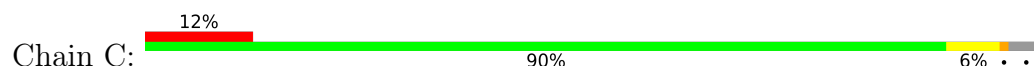
- Molecule 1: Pertussis toxin subunit 1



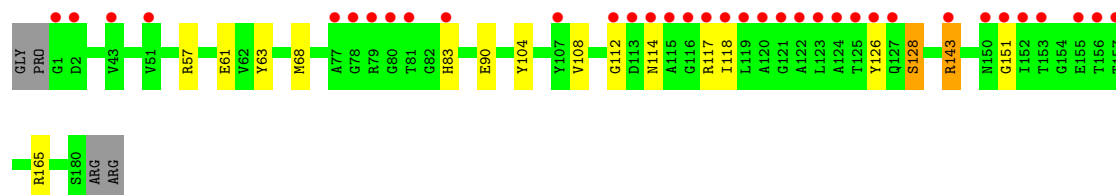
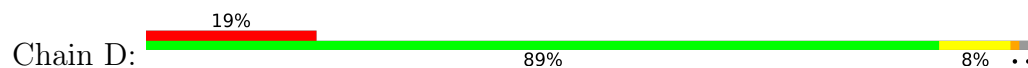
- Molecule 1: Pertussis toxin subunit 1



- Molecule 1: Pertussis toxin subunit 1



- Molecule 1: Pertussis toxin subunit 1



4 Data and refinement statistics

Property	Value	Source
Space group	P 1	Depositor
Cell constants a, b, c, α , β , γ	34.60Å 68.25Å 71.67Å 90.73° 90.27° 91.45°	Depositor
Resolution (Å)	24.60 – 1.37 24.60 – 1.37	Depositor EDS
% Data completeness (in resolution range)	90.4 (24.60-1.37) 90.4 (24.60-1.37)	Depositor EDS
R_{merge}	(Not available)	Depositor
R_{sym}	(Not available)	Depositor
$\langle I/\sigma(I) \rangle$ ¹	2.37 (at 1.37Å)	Xtriage
Refinement program	PHENIX 1.10.1_2155, PHENIX 1.10.1_2155	Depositor
R, R_{free}	0.202 , 0.224 0.203 , 0.224	Depositor DCC
R_{free} test set	6148 reflections (4.94%)	wwPDB-VP
Wilson B-factor (Å ²)	9.1	Xtriage
Anisotropy	0.202	Xtriage
Bulk solvent k_{sol} (e/Å ³), B_{sol} (Å ²)	0.37 , 55.9	EDS
L-test for twinning ²	$\langle L \rangle = 0.47$, $\langle L^2 \rangle = 0.29$	Xtriage
Estimated twinning fraction	0.128 for h,-k,-l 0.029 for -h,k,-l 0.029 for -h,-k,l	Xtriage
F_o, F_c correlation	0.94	EDS
Total number of atoms	6564	wwPDB-VP
Average B, all atoms (Å ²)	18.0	wwPDB-VP

Xtriage's analysis on translational NCS is as follows: *The largest off-origin peak in the Patterson function is 6.45% of the height of the origin peak. No significant pseudotranslation is detected.*

¹Intensities estimated from amplitudes.

²Theoretical values of $\langle |L| \rangle$, $\langle L^2 \rangle$ for acentric reflections are 0.5, 0.333 respectively for untwinned datasets, and 0.375, 0.2 for perfectly twinned datasets.

5 Model quality

5.1 Standard geometry

Bond lengths and bond angles in the following residue types are not validated in this section: IOD, NAD

The Z score for a bond length (or angle) is the number of standard deviations the observed value is removed from the expected value. A bond length (or angle) with $|Z| > 5$ is considered an outlier worth inspection. RMSZ is the root-mean-square of all Z scores of the bond lengths (or angles).

Mol	Chain	Bond lengths		Bond angles	
		RMSZ	$\# Z > 5$	RMSZ	$\# Z > 5$
1	A	0.43	1/1468 (0.1%)	0.66	3/1998 (0.2%)
1	B	0.56	0/1468	0.67	3/1998 (0.2%)
1	C	0.37	0/1444	0.58	0/1965
1	D	0.38	0/1468	0.59	0/1998
All	All	0.44	1/5848 (0.0%)	0.63	6/7959 (0.1%)

All (1) bond length outliers are listed below:

Mol	Chain	Res	Type	Atoms	Z	Observed(Å)	Ideal(Å)
1	A	106	GLU	CG-CD	-7.55	1.40	1.51

All (6) bond angle outliers are listed below:

Mol	Chain	Res	Type	Atoms	Z	Observed(°)	Ideal(°)
1	B	68	MET	CG-SD-CE	8.18	113.29	100.20
1	A	131	LEU	CA-CB-CG	6.45	130.13	115.30
1	B	143	ARG	NE-CZ-NH2	-5.35	117.62	120.30
1	A	142	ARG	NE-CZ-NH2	5.25	122.92	120.30
1	A	106	GLU	OE1-CD-OE2	5.21	129.56	123.30
1	B	127	GLN	N-CA-C	5.12	124.81	111.00

There are no chirality outliers.

There are no planarity outliers.

5.2 Too-close contacts

In the following table, the Non-H and H(model) columns list the number of non-hydrogen atoms and hydrogen atoms in the chain respectively. The H(added) column lists the number of hydrogen atoms added and optimized by MolProbity. The Clashes column lists the number of clashes within

the asymmetric unit, whereas Symm-Clashes lists symmetry-related clashes.

Mol	Chain	Non-H	H(model)	H(added)	Clashes	Symm-Clashes
1	A	1432	0	1320	10	0
1	B	1432	0	1320	11	0
1	C	1409	0	1289	11	0
1	D	1432	0	1320	14	0
2	A	1	0	0	1	0
2	B	1	0	0	4	0
2	C	1	0	0	0	0
2	D	1	0	0	0	0
3	A	44	0	26	0	0
3	B	44	0	26	0	0
3	C	44	0	26	0	0
3	D	44	0	26	0	0
4	A	173	0	0	2	0
4	B	180	0	0	0	0
4	C	172	0	0	0	0
4	D	154	0	0	3	0
All	All	6564	0	5353	44	0

The all-atom clashscore is defined as the number of clashes found per 1000 atoms (including hydrogen atoms). The all-atom clashscore for this structure is 4.

All (44) close contacts within the same asymmetric unit are listed below, sorted by their clash magnitude.

Atom-1	Atom-2	Interatomic distance (Å)	Clash overlap (Å)
1:B:131:LEU:HD23	2:B:201:IOD:I	2.05	1.26
1:B:131:LEU:CD2	2:B:201:IOD:I	2.56	1.23
1:B:131:LEU:HD21	2:B:201:IOD:I	2.27	1.05
1:A:125:THR:HG22	1:A:127:GLN:HG2	1.58	0.85
1:A:131:LEU:HD23	2:A:201:IOD:I	2.50	0.81
1:A:118:ILE:HD12	1:A:118:ILE:N	2.00	0.77
1:D:57:ARG:NH1	1:D:61:GLU:OE2	2.26	0.68
1:A:118:ILE:HD12	1:A:118:ILE:H	1.58	0.66
1:C:57:ARG:NH1	1:C:61:GLU:OE2	2.34	0.61
1:B:109:ASP:OD1	1:B:117:ARG:NH1	2.35	0.60
1:B:82:GLY:HA3	1:B:151:GLY:HA3	1.86	0.58
1:D:114:ASN:OD1	1:D:117:ARG:NH1	2.37	0.57
1:A:39:ARG:NH1	4:A:305:HOH:O	2.38	0.56
1:B:129:GLU:HB3	2:B:201:IOD:I	2.77	0.55
1:D:68:MET:HE2	4:D:320:HOH:O	2.09	0.53
1:A:102:SER:OG	1:A:177:PRO:HG3	2.09	0.52

Continued on next page...

Continued from previous page...

Atom-1	Atom-2	Interatomic distance (Å)	Clash overlap (Å)
1:D:90:GLU:HB3	1:D:143:ARG:HG3	1.91	0.52
1:D:83:HIS:CD2	1:D:151:GLY:H	2.28	0.51
1:C:83:HIS:HE1	1:C:152:ILE:HD12	1.74	0.51
1:A:118:ILE:N	1:A:118:ILE:CD1	2.71	0.51
1:D:128:SER:HB3	4:D:340:HOH:O	2.10	0.50
1:C:143:ARG:NH2	1:D:114:ASN:HB2	2.26	0.49
1:D:104:TYR:CZ	1:D:108:VAL:HG21	2.48	0.49
1:C:143:ARG:HH22	1:D:114:ASN:HB2	1.80	0.47
1:C:83:HIS:CE1	1:C:152:ILE:HD12	2.50	0.46
1:D:114:ASN:HA	1:D:117:ARG:HE	1.80	0.46
1:A:159:THR:HG22	4:A:427:HOH:O	2.15	0.46
1:A:146:ARG:HB3	1:A:159:THR:HG23	1.97	0.46
1:B:75:GLU:OE1	1:B:82:GLY:HA2	2.15	0.46
1:C:74:ALA:HB1	1:C:79:ARG:O	2.16	0.46
1:D:118:ILE:HD12	1:D:118:ILE:H	1.81	0.46
1:D:108:VAL:CG1	1:D:117:ARG:HB2	2.47	0.45
1:C:69:GLN:O	1:C:73:GLU:HG2	2.17	0.44
1:C:75:GLU:HB2	1:C:82:GLY:N	2.33	0.44
1:D:165:ARG:NH2	4:D:304:HOH:O	2.45	0.44
1:A:125:THR:CG2	1:A:127:GLN:HG2	2.39	0.43
1:C:75:GLU:HB2	1:C:82:GLY:CA	2.48	0.43
1:C:83:HIS:HD1	1:C:83:HIS:N	2.18	0.42
1:B:72:VAL:HA	1:B:75:GLU:OE1	2.19	0.42
1:C:139:GLU:CD	1:C:139:GLU:H	2.23	0.41
1:B:69:GLN:O	1:B:73:GLU:HG2	2.20	0.40
1:B:75:GLU:HG3	1:B:80:GLY:C	2.41	0.40
1:D:112:GLY:C	1:D:114:ASN:H	2.25	0.40
1:B:123:LEU:HD23	1:B:127:GLN:NE2	2.36	0.40

There are no symmetry-related clashes.

5.3 Torsion angles

5.3.1 Protein backbone

In the following table, the Percentiles column shows the percent Ramachandran outliers of the chain as a percentile score with respect to all X-ray entries followed by that with respect to entries of similar resolution.

The Analysed column shows the number of residues for which the backbone conformation was analysed, and the total number of residues.

Mol	Chain	Analysed	Favoured	Allowed	Outliers	Percentiles	
1	A	178/184 (97%)	173 (97%)	5 (3%)	0	100	100
1	B	178/184 (97%)	171 (96%)	6 (3%)	1 (1%)	25	7
1	C	173/184 (94%)	169 (98%)	4 (2%)	0	100	100
1	D	178/184 (97%)	170 (96%)	8 (4%)	0	100	100
All	All	707/736 (96%)	683 (97%)	23 (3%)	1 (0%)	51	23

All (1) Ramachandran outliers are listed below:

Mol	Chain	Res	Type
1	B	127	GLN

5.3.2 Protein sidechains ⓘ

In the following table, the Percentiles column shows the percent sidechain outliers of the chain as a percentile score with respect to all X-ray entries followed by that with respect to entries of similar resolution.

The Analysed column shows the number of residues for which the sidechain conformation was analysed, and the total number of residues.

Mol	Chain	Analysed	Rotameric	Outliers	Percentiles	
1	A	149/152 (98%)	147 (99%)	2 (1%)	69	41
1	B	149/152 (98%)	146 (98%)	3 (2%)	55	23
1	C	147/152 (97%)	146 (99%)	1 (1%)	84	65
1	D	149/152 (98%)	145 (97%)	4 (3%)	44	13
All	All	594/608 (98%)	584 (98%)	10 (2%)	60	30

All (10) residues with a non-rotameric sidechain are listed below:

Mol	Chain	Res	Type
1	B	63	TYR
1	B	67	ARG
1	B	117	ARG
1	A	106	GLU
1	A	118	ILE
1	C	83	HIS
1	D	63	TYR
1	D	126	TYR
1	D	128	SER
1	D	143	ARG

Sometimes sidechains can be flipped to improve hydrogen bonding and reduce clashes. All (2) such sidechains are listed below:

Mol	Chain	Res	Type
1	A	127	GLN
1	D	83	HIS

5.3.3 RNA ⓘ

There are no RNA molecules in this entry.

5.4 Non-standard residues in protein, DNA, RNA chains ⓘ

There are no non-standard protein/DNA/RNA residues in this entry.

5.5 Carbohydrates ⓘ

There are no monosaccharides in this entry.

5.6 Ligand geometry ⓘ

Of 8 ligands modelled in this entry, 4 are monoatomic - leaving 4 for Mogul analysis.

In the following table, the Counts columns list the number of bonds (or angles) for which Mogul statistics could be retrieved, the number of bonds (or angles) that are observed in the model and the number of bonds (or angles) that are defined in the Chemical Component Dictionary. The Link column lists molecule types, if any, to which the group is linked. The Z score for a bond length (or angle) is the number of standard deviations the observed value is removed from the expected value. A bond length (or angle) with $|Z| > 2$ is considered an outlier worth inspection. RMSZ is the root-mean-square of all Z scores of the bond lengths (or angles).

Mol	Type	Chain	Res	Link	Bond lengths			Bond angles		
					Counts	RMSZ	$\# Z > 2$	Counts	RMSZ	$\# Z > 2$
3	NAD	D	202	-	42,48,48	1.22	6 (14%)	50,73,73	1.32	6 (12%)
3	NAD	A	202	-	42,48,48	1.53	7 (16%)	50,73,73	1.32	6 (12%)
3	NAD	B	202	-	42,48,48	1.45	5 (11%)	50,73,73	1.21	4 (8%)
3	NAD	C	202	-	42,48,48	1.64	8 (19%)	50,73,73	1.32	8 (16%)

In the following table, the Chirals column lists the number of chiral outliers, the number of chiral centers analysed, the number of these observed in the model and the number defined in the Chemical Component Dictionary. Similar counts are reported in the Torsion and Rings columns. '-' means no outliers of that kind were identified.

Mol	Type	Chain	Res	Link	Chirals	Torsions	Rings
3	NAD	D	202	-	-	4/26/62/62	0/5/5/5
3	NAD	A	202	-	-	1/26/62/62	0/5/5/5
3	NAD	B	202	-	-	1/26/62/62	0/5/5/5
3	NAD	C	202	-	-	1/26/62/62	0/5/5/5

All (26) bond length outliers are listed below:

Mol	Chain	Res	Type	Atoms	Z	Observed(Å)	Ideal(Å)
3	C	202	NAD	O7N-C7N	-5.31	1.14	1.24
3	B	202	NAD	C2B-C1B	-4.49	1.46	1.53
3	C	202	NAD	C2B-C1B	-4.37	1.47	1.53
3	A	202	NAD	C2B-C1B	-3.96	1.47	1.53
3	B	202	NAD	O7N-C7N	-3.47	1.17	1.24
3	A	202	NAD	O7N-C7N	-3.40	1.17	1.24
3	B	202	NAD	C8A-N7A	-3.25	1.28	1.34
3	D	202	NAD	O7N-C7N	-3.10	1.18	1.24
3	C	202	NAD	C6N-N1N	-3.03	1.28	1.35
3	A	202	NAD	O4B-C1B	2.85	1.45	1.41
3	D	202	NAD	C3D-C4D	-2.52	1.46	1.53
3	B	202	NAD	O4B-C1B	2.50	1.44	1.41
3	C	202	NAD	O4B-C1B	2.44	1.44	1.41
3	C	202	NAD	C5A-N7A	-2.43	1.30	1.39
3	D	202	NAD	C2N-N1N	-2.42	1.32	1.35
3	C	202	NAD	O4D-C4D	-2.31	1.39	1.45
3	B	202	NAD	C4A-N3A	-2.31	1.32	1.35
3	D	202	NAD	O4B-C4B	-2.26	1.39	1.45
3	A	202	NAD	C6A-N1A	-2.25	1.27	1.37
3	C	202	NAD	C2A-N1A	-2.22	1.29	1.33
3	C	202	NAD	PN-O2N	-2.20	1.45	1.55
3	A	202	NAD	O5D-C5D	-2.20	1.36	1.44
3	A	202	NAD	C2D-C1D	-2.18	1.50	1.53
3	D	202	NAD	C6N-N1N	-2.15	1.30	1.35
3	A	202	NAD	C5A-N7A	-2.12	1.32	1.39
3	D	202	NAD	C3N-C7N	2.11	1.53	1.50

All (24) bond angle outliers are listed below:

Mol	Chain	Res	Type	Atoms	Z	Observed(°)	Ideal(°)
3	D	202	NAD	N3A-C2A-N1A	-3.84	122.68	128.68
3	A	202	NAD	C4A-C5A-N7A	-3.50	105.75	109.40
3	A	202	NAD	C3D-C2D-C1D	3.39	106.09	100.98
3	D	202	NAD	C4A-C5A-N7A	-3.27	105.99	109.40
3	A	202	NAD	C3N-C7N-N7N	3.23	121.62	117.75

Continued on next page...

Continued from previous page...

Mol	Chain	Res	Type	Atoms	Z	Observed(°)	Ideal(°)
3	C	202	NAD	C3D-C2D-C1D	3.06	105.58	100.98
3	D	202	NAD	C2A-N1A-C6A	2.85	123.63	118.75
3	D	202	NAD	PN-O3-PA	-2.73	123.46	132.83
3	C	202	NAD	C4A-C5A-N7A	-2.69	106.60	109.40
3	B	202	NAD	PN-O3-PA	-2.62	123.85	132.83
3	D	202	NAD	C1B-N9A-C4A	-2.61	122.05	126.64
3	C	202	NAD	N3A-C2A-N1A	-2.59	124.64	128.68
3	C	202	NAD	O4B-C4B-C3B	-2.52	100.13	105.11
3	A	202	NAD	O7N-C7N-N7N	-2.51	119.01	122.58
3	C	202	NAD	C5A-C6A-N6A	2.48	124.12	120.35
3	C	202	NAD	C2A-N1A-C6A	2.42	122.90	118.75
3	B	202	NAD	C3D-C2D-C1D	2.42	104.62	100.98
3	D	202	NAD	C2N-C3N-C4N	-2.41	115.53	118.26
3	B	202	NAD	C4A-C5A-N7A	-2.19	107.12	109.40
3	C	202	NAD	PN-O3-PA	-2.18	125.35	132.83
3	C	202	NAD	C5A-C6A-N1A	-2.10	115.59	120.35
3	B	202	NAD	N6A-C6A-N1A	2.04	122.81	118.57
3	A	202	NAD	C5A-C6A-N6A	2.03	123.43	120.35
3	A	202	NAD	C5A-C6A-N1A	-2.02	115.78	120.35

There are no chirality outliers.

All (7) torsion outliers are listed below:

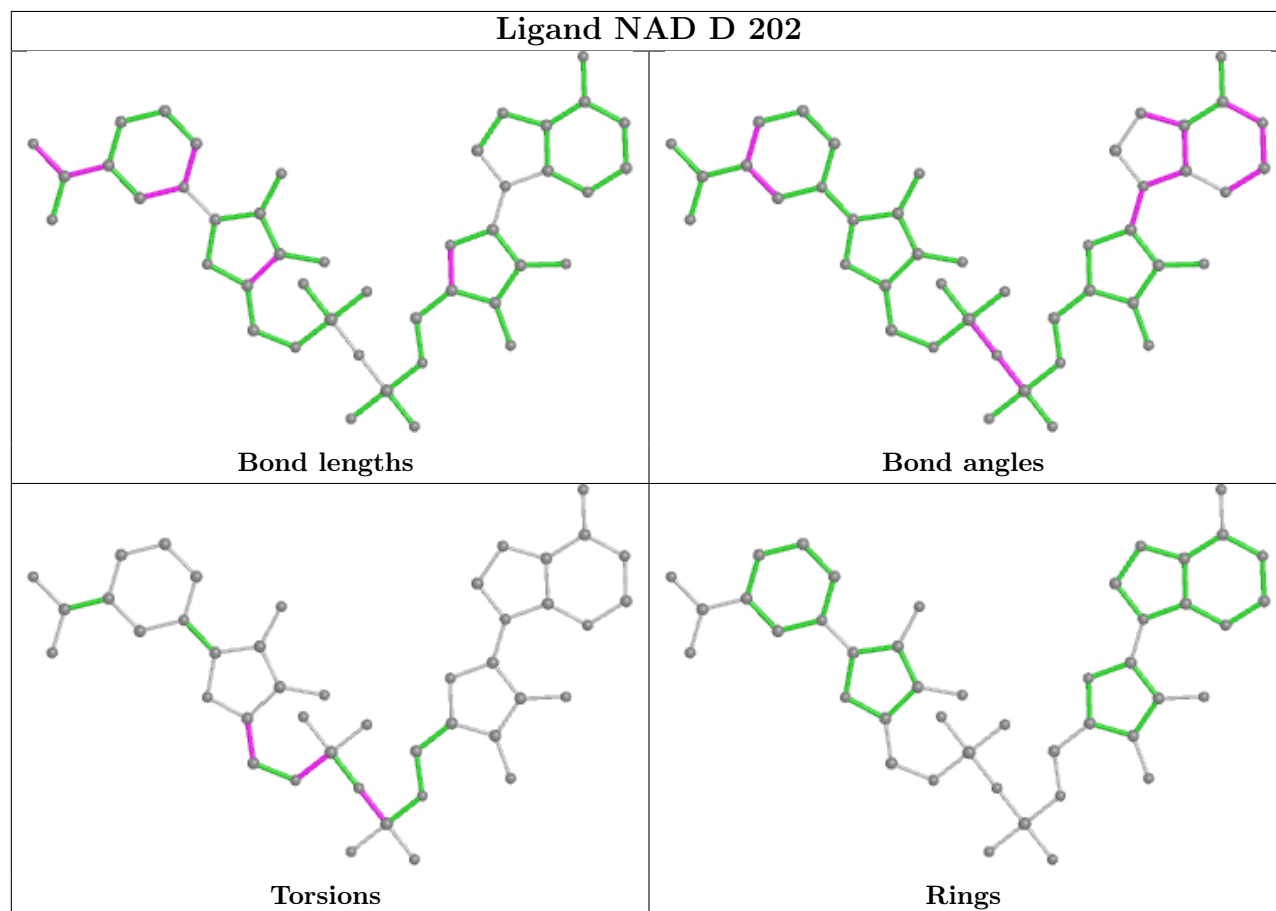
Mol	Chain	Res	Type	Atoms
3	A	202	NAD	PN-O3-PA-O5B
3	D	202	NAD	PN-O3-PA-O5B
3	D	202	NAD	C3D-C4D-C5D-O5D
3	B	202	NAD	PN-O3-PA-O5B
3	C	202	NAD	PN-O3-PA-O5B
3	D	202	NAD	O4D-C4D-C5D-O5D
3	D	202	NAD	C5D-O5D-PN-O1N

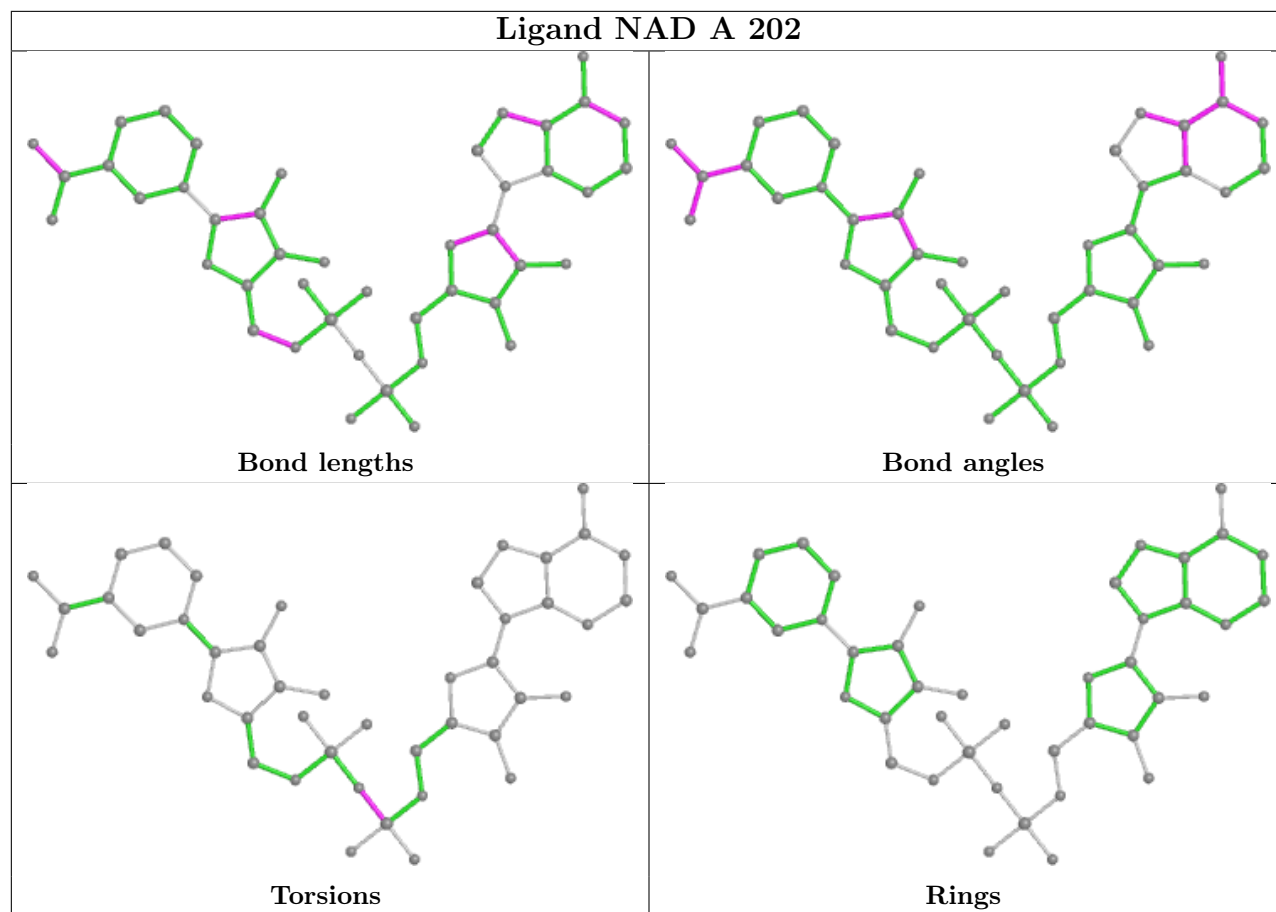
There are no ring outliers.

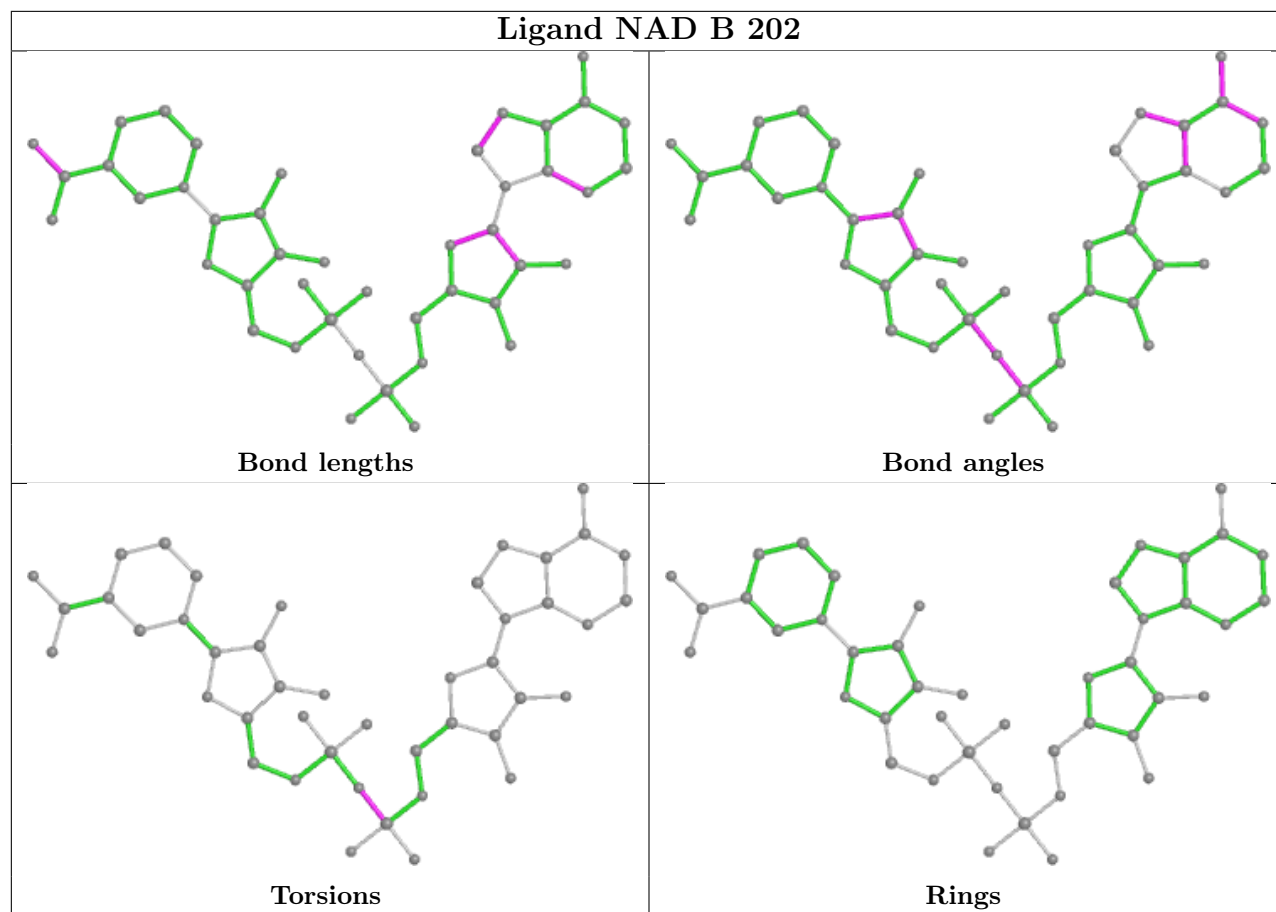
No monomer is involved in short contacts.

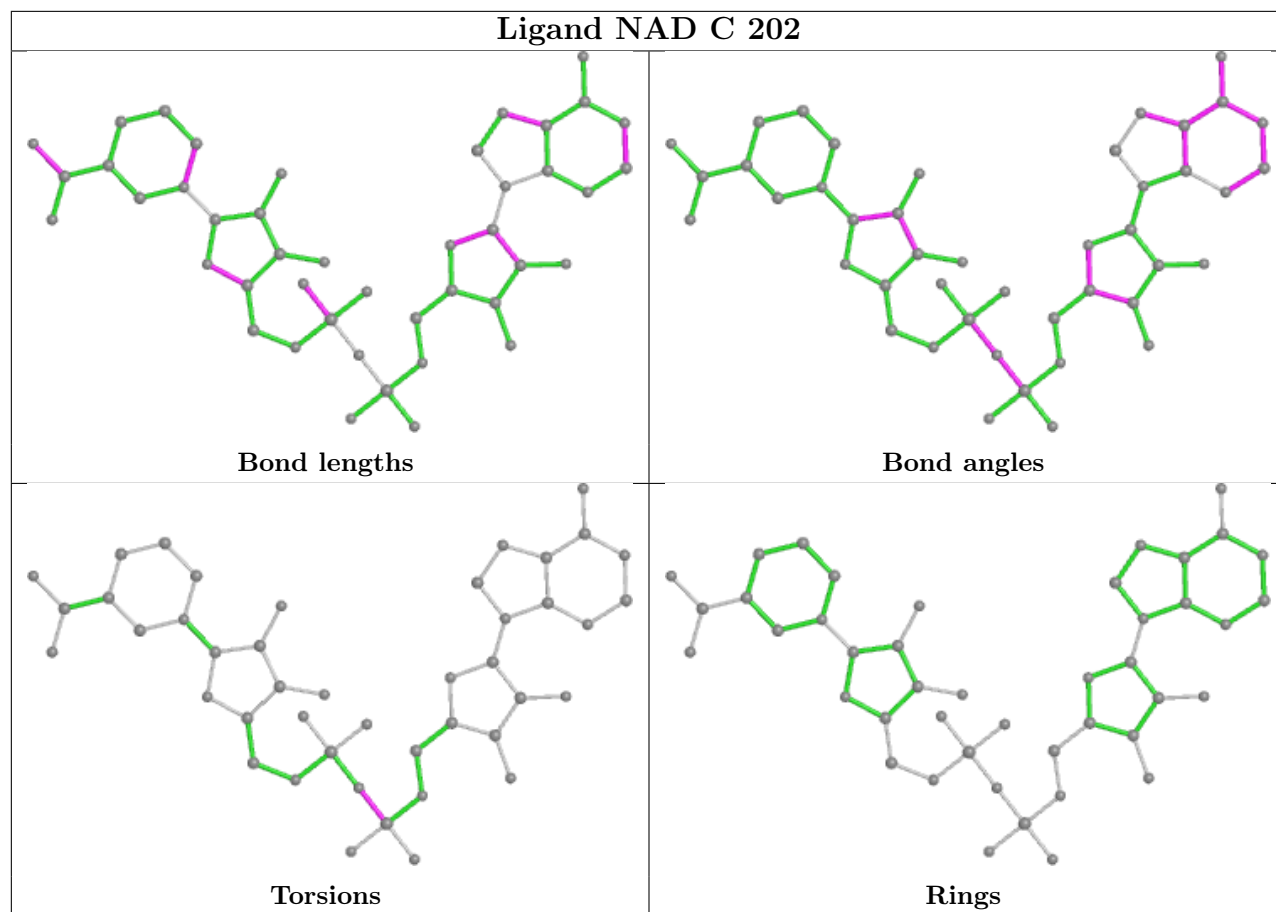
The following is a two-dimensional graphical depiction of Mogul quality analysis of bond lengths, bond angles, torsion angles, and ring geometry for all instances of the Ligand of Interest. In addition, ligands with molecular weight > 250 and outliers as shown on the validation Tables will also be included. For torsion angles, if less than 5% of the Mogul distribution of torsion angles is within 10 degrees of the torsion angle in question, then that torsion angle is considered an outlier. Any bond that is central to one or more torsion angles identified as an outlier by Mogul will be highlighted in the graph. For rings, the root-mean-square deviation (RMSD) between the ring

in question and similar rings identified by Mogul is calculated over all ring torsion angles. If the average RMSD is greater than 60 degrees and the minimal RMSD between the ring in question and any Mogul-identified rings is also greater than 60 degrees, then that ring is considered an outlier. The outliers are highlighted in purple. The color gray indicates Mogul did not find sufficient equivalents in the CSD to analyse the geometry.









5.7 Other polymers [i](#)

There are no such residues in this entry.

5.8 Polymer linkage issues [i](#)

There are no chain breaks in this entry.

6 Fit of model and data

6.1 Protein, DNA and RNA chains

In the following table, the column labelled ‘#RSRZ> 2’ contains the number (and percentage) of RSRZ outliers, followed by percent RSRZ outliers for the chain as percentile scores relative to all X-ray entries and entries of similar resolution. The OWAB column contains the minimum, median, 95th percentile and maximum values of the occupancy-weighted average B-factor per residue. The column labelled ‘Q< 0.9’ lists the number of (and percentage) of residues with an average occupancy less than 0.9.

Mol	Chain	Analysed	<RSRZ>	#RSRZ>2	OWAB(Å ²)	Q<0.9
1	A	180/184 (97%)	0.98	28 (15%) 2 1	7, 14, 39, 56	0
1	B	180/184 (97%)	0.82	16 (8%) 9 10	7, 12, 38, 76	0
1	C	177/184 (96%)	0.93	23 (12%) 3 3	7, 13, 43, 65	0
1	D	180/184 (97%)	1.63	35 (19%) 1 1	8, 16, 91, 100	0
All	All	717/736 (97%)	1.09	102 (14%) 2 2	7, 14, 48, 100	0

All (102) RSRZ outliers are listed below:

Mol	Chain	Res	Type	RSRZ
1	D	124	ALA	17.8
1	D	118	ILE	17.6
1	D	123	LEU	14.9
1	D	116	GLY	14.7
1	C	122	ALA	14.4
1	D	115	ALA	12.6
1	D	122	ALA	12.3
1	C	123	LEU	11.4
1	D	121	GLY	10.2
1	A	152	ILE	9.9
1	D	125	THR	8.7
1	A	118	ILE	8.6
1	D	120	ALA	8.4
1	C	118	ILE	8.1
1	D	114	ASN	7.8
1	D	117	ARG	7.7
1	D	112	GLY	7.6
1	D	79	ARG	7.2
1	A	125	THR	6.8
1	C	83	HIS	6.8
1	B	79	ARG	6.8

Continued on next page...

Continued from previous page...

Mol	Chain	Res	Type	RSRZ
1	D	126	TYR	6.8
1	C	79	ARG	6.6
1	D	152	ILE	6.4
1	B	75	GLU	5.8
1	B	80	GLY	5.7
1	A	79	ARG	5.7
1	B	77	ALA	5.7
1	D	81	THR	5.6
1	D	113	ASP	5.5
1	B	78	GLY	5.5
1	D	119	LEU	5.5
1	A	121	GLY	5.4
1	D	78	GLY	5.2
1	B	81	THR	5.2
1	D	77	ALA	5.2
1	A	148	TYR	5.2
1	A	1	GLY	5.1
1	B	118	ILE	5.0
1	B	114	ASN	4.9
1	C	125	THR	4.7
1	C	81	THR	4.7
1	C	114	ASN	4.6
1	C	82	GLY	4.4
1	A	78	GLY	4.3
1	A	80	GLY	4.1
1	A	120	ALA	4.1
1	D	80	GLY	4.1
1	B	74	ALA	4.0
1	C	117	ARG	3.9
1	D	1	GLY	3.8
1	A	123	LEU	3.7
1	C	179	THR	3.6
1	C	43	VAL	3.6
1	C	116	GLY	3.5
1	A	117	ARG	3.4
1	B	152	ILE	3.4
1	A	116	GLY	3.4
1	B	113	ASP	3.3
1	D	127	GLN	3.3
1	C	124	ALA	3.3
1	B	127	GLN	3.3
1	B	76	ARG	3.2

Continued on next page...

Continued from previous page...

Mol	Chain	Res	Type	RSRZ
1	A	153	THR	3.2
1	A	2	ASP	3.1
1	D	155	GLU	3.1
1	B	116	GLY	3.1
1	C	80	GLY	3.0
1	A	157	THR	3.0
1	A	119	LEU	2.8
1	A	124	ALA	2.8
1	A	179	THR	2.8
1	C	2	ASP	2.7
1	D	156	THR	2.7
1	D	151	GLY	2.7
1	A	122	ALA	2.7
1	C	1	GLY	2.6
1	D	150	ASN	2.6
1	D	83	HIS	2.6
1	D	153	THR	2.6
1	C	126	TYR	2.6
1	C	78	GLY	2.6
1	A	114	ASN	2.6
1	C	115	ALA	2.6
1	B	43	VAL	2.5
1	A	39	ARG	2.5
1	D	43	VAL	2.5
1	D	157	THR	2.4
1	C	77	ALA	2.4
1	A	126	TYR	2.4
1	A	81	THR	2.4
1	A	158	THR	2.3
1	A	83	HIS	2.3
1	D	51	VAL	2.3
1	D	143	ARG	2.3
1	A	77	ALA	2.2
1	C	180	SER	2.2
1	C	127	GLN	2.2
1	D	2	ASP	2.1
1	D	107	TYR	2.1
1	A	75	GLU	2.1
1	B	112	GLY	2.0

6.2 Non-standard residues in protein, DNA, RNA chains [i](#)

There are no non-standard protein/DNA/RNA residues in this entry.

6.3 Carbohydrates [i](#)

There are no monosaccharides in this entry.

6.4 Ligands [i](#)

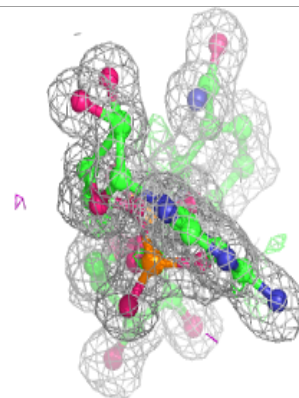
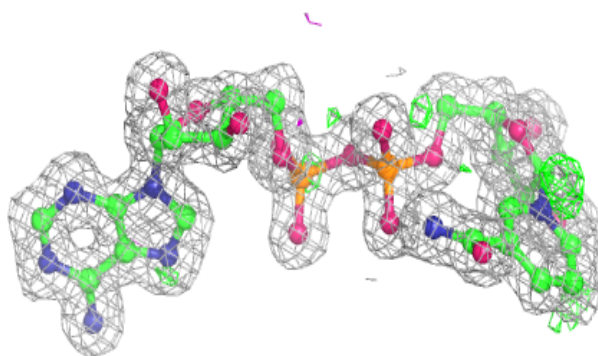
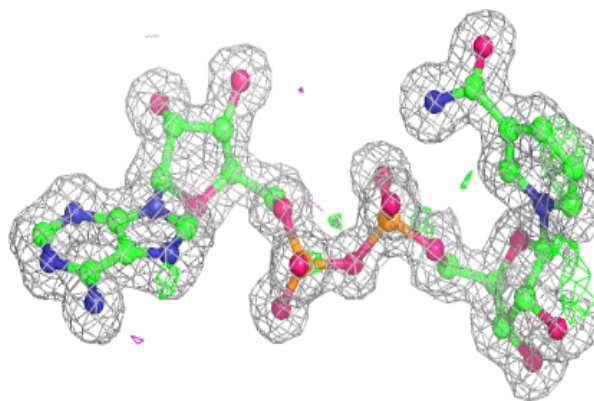
In the following table, the Atoms column lists the number of modelled atoms in the group and the number defined in the chemical component dictionary. The B-factors column lists the minimum, median, 95th percentile and maximum values of B factors of atoms in the group. The column labelled 'Q< 0.9' lists the number of atoms with occupancy less than 0.9.

Mol	Type	Chain	Res	Atoms	RSCC	RSR	B-factors(\AA^2)	Q<0.9
2	IOD	B	201	1/1	0.88	0.15	57,57,57,57	0
3	NAD	C	202	44/44	0.96	0.08	7,9,13,14	0
3	NAD	D	202	44/44	0.96	0.08	7,11,16,20	0
3	NAD	B	202	44/44	0.97	0.07	6,9,15,19	0
3	NAD	A	202	44/44	0.97	0.09	7,9,12,14	0
2	IOD	D	201	1/1	0.99	0.04	13,13,13,13	0
2	IOD	C	201	1/1	1.00	0.05	10,10,10,10	0
2	IOD	A	201	1/1	1.00	0.04	9,9,9,9	0

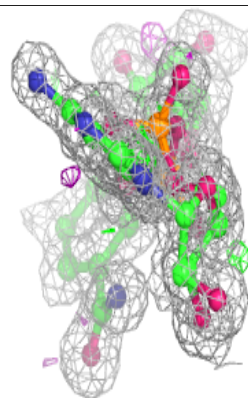
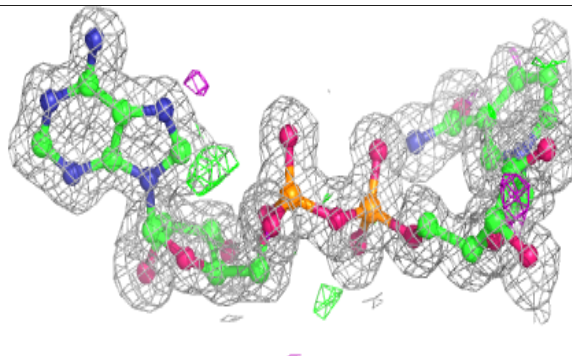
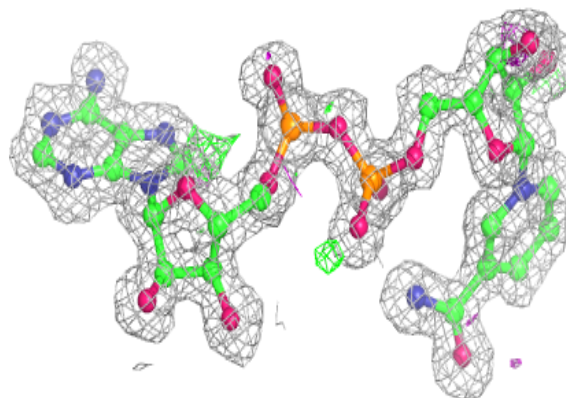
The following is a graphical depiction of the model fit to experimental electron density of all instances of the Ligand of Interest. In addition, ligands with molecular weight > 250 and outliers as shown on the geometry validation Tables will also be included. Each fit is shown from different orientation to approximate a three-dimensional view.

Electron density around NAD C 202:

$2mF_o-DF_c$ (at 0.7 rmsd) in gray
 mF_o-DF_c (at 3 rmsd) in purple (negative)
and green (positive)

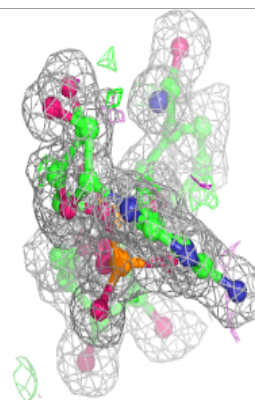
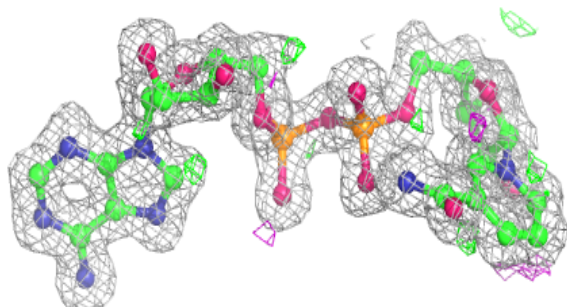
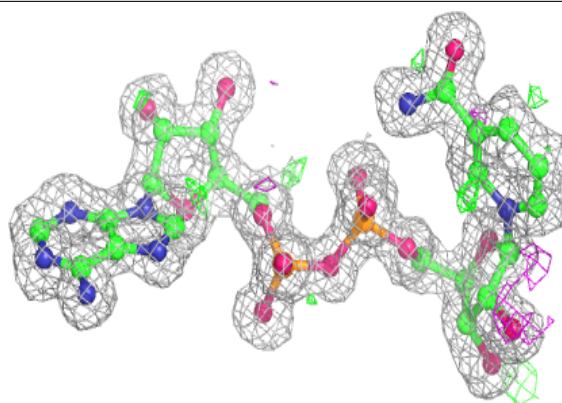
**Electron density around NAD D 202:**

$2mF_o-DF_c$ (at 0.7 rmsd) in gray
 mF_o-DF_c (at 3 rmsd) in purple (negative)
and green (positive)

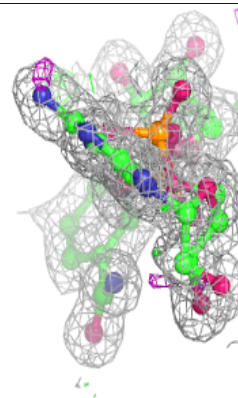
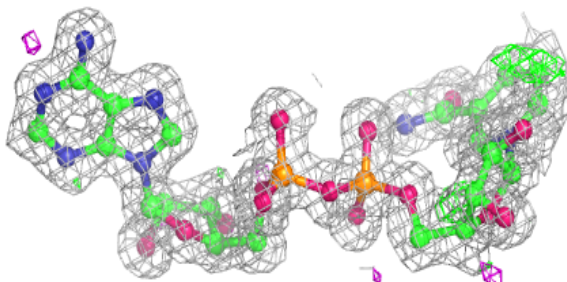
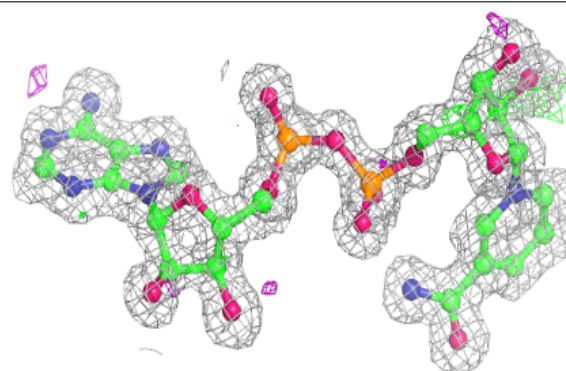


Electron density around NAD B 202:

$2mF_o-DF_c$ (at 0.7 rmsd) in gray
 mF_o-DF_c (at 3 rmsd) in purple (negative)
and green (positive)

**Electron density around NAD A 202:**

$2mF_o-DF_c$ (at 0.7 rmsd) in gray
 mF_o-DF_c (at 3 rmsd) in purple (negative)
and green (positive)



6.5 Other polymers [i](#)

There are no such residues in this entry.