



Full wwPDB X-ray Structure Validation Report ⓘ

Aug 8, 2020 – 05:57 PM BST

PDB ID : 6SMA
Title : Crystal structure of Human Neutrophil Elastase (HNE) in complex with the 3-Oxo-beta-Sultam inhibitor LMC249
Authors : Brito, J.A.; Almeida, V.T.; Carvalho, L.M.; Moreira, R.; Archer, M.
Deposited on : 2019-08-21
Resolution : 2.59 Å(reported)

This is a Full wwPDB X-ray Structure Validation Report for a publicly released PDB entry.

We welcome your comments at validation@mail.wwpdb.org

A user guide is available at

<https://www.wwpdb.org/validation/2017/XrayValidationReportHelp>

with specific help available everywhere you see the ⓘ symbol.

The following versions of software and data (see [references ⓘ](#)) were used in the production of this report:

MolProbity : 4.02b-467
Mogul : 1.8.5 (274361), CSD as541be (2020)
Xtriage (Phenix) : 1.13
EDS : 2.13.1
buster-report : 1.1.7 (2018)
Percentile statistics : 20191225.v01 (using entries in the PDB archive December 25th 2019)
Refmac : 5.8.0158
CCP4 : 7.0.044 (Gargrove)
Ideal geometry (proteins) : Engh & Huber (2001)
Ideal geometry (DNA, RNA) : Parkinson et al. (1996)
Validation Pipeline (wwPDB-VP) : 2.13.1

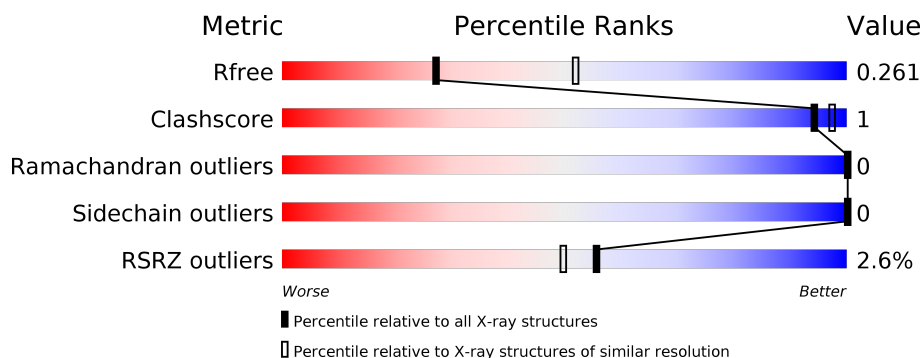
1 Overall quality at a glance

The following experimental techniques were used to determine the structure:

X-RAY DIFFRACTION

The reported resolution of this entry is 2.59 Å.

Percentile scores (ranging between 0-100) for global validation metrics of the entry are shown in the following graphic. The table shows the number of entries on which the scores are based.



Metric	Whole archive (#Entries)	Similar resolution (#Entries, resolution range(Å))
R_{free}	130704	3163 (2.60-2.60)
Clashscore	141614	3518 (2.60-2.60)
Ramachandran outliers	138981	3455 (2.60-2.60)
Sidechain outliers	138945	3455 (2.60-2.60)
RSRZ outliers	127900	3104 (2.60-2.60)

The table below summarises the geometric issues observed across the polymeric chains and their fit to the electron density. The red, orange, yellow and green segments on the lower bar indicate the fraction of residues that contain outliers for ≥ 3 , 2, 1 and 0 types of geometric quality criteria respectively. A grey segment represents the fraction of residues that are not modelled. The numeric value for each fraction is indicated below the corresponding segment, with a dot representing fractions $\leq 5\%$. The upper red bar (where present) indicates the fraction of residues that have poor fit to the electron density. The numeric value is given above the bar.

Mol	Chain	Length	Quality of chain
1	A	218	<div> <div>2%</div> <div> <div></div> <div>96%</div> <div></div> </div> <div></div> </div>
1	B	218	<div> <div>4%</div> <div> <div></div> <div>95%</div> <div></div> </div> <div></div> </div>
1	C	218	<div> <div>2%</div> <div> <div></div> <div>99%</div> <div></div> </div> <div></div> </div>
2	D	3	<div> <div></div> <div> <div>67%</div> <div>33%</div> </div> </div>
2	E	3	<div> <div></div> <div> <div>67%</div> <div>33%</div> </div> </div>
2	F	3	<div> <div></div> <div> <div>67%</div> <div>33%</div> </div> </div>

Continued on next page...

Continued from previous page...

Mol	Chain	Length	Quality of chain
2	H	3	
2	I	3	
3	G	2	

The following table lists non-polymeric compounds, carbohydrate monomers and non-standard residues in protein, DNA, RNA chains that are outliers for geometric or electron-density-fit criteria:

Mol	Type	Chain	Res	Chirality	Geometry	Clashes	Electron density
4	BR	A	308	-	-	X	-

2 Entry composition

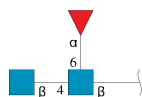
There are 7 unique types of molecules in this entry. The entry contains 10356 atoms, of which 5120 are hydrogens and 0 are deuteriums.

In the tables below, the ZeroOcc column contains the number of atoms modelled with zero occupancy, the AltConf column contains the number of residues with at least one atom in alternate conformation and the Trace column contains the number of residues modelled with at most 2 atoms.

- Molecule 1 is a protein called Neutrophil elastase.

Mol	Chain	Residues	Atoms						ZeroOcc	AltConf	Trace
1	A	218	Total	C	H	N	O	S	0	0	0
			3280	1026	1644	316	283	11			
1	B	214	Total	C	H	N	O	S	0	0	0
			3209	1008	1607	305	278	11			
1	C	218	Total	C	H	N	O	S	0	0	0
			3280	1026	1644	316	283	11			

- Molecule 2 is an oligosaccharide called 2-acetamido-2-deoxy-beta-D-glucopyranose-(1-4)-[alpha-L-fucopyranose-(1-6)]2-acetamido-2-deoxy-beta-D-glucopyranose.



Mol	Chain	Residues	Atoms					ZeroOcc	AltConf	Trace
2	D	3	Total	C	H	N	O	0	0	0
			72	22	34	2	14			
2	E	3	Total	C	H	N	O	0	0	0
			72	22	34	2	14			
2	F	3	Total	C	H	N	O	0	0	0
			72	22	34	2	14			
2	H	3	Total	C	H	N	O	0	0	0
			73	22	35	2	14			
2	I	3	Total	C	H	N	O	0	0	0
			72	22	34	2	14			

- Molecule 3 is an oligosaccharide called alpha-L-fucopyranose-(1-6)-2-acetamido-2-deoxy-beta-D-glucopyranose.

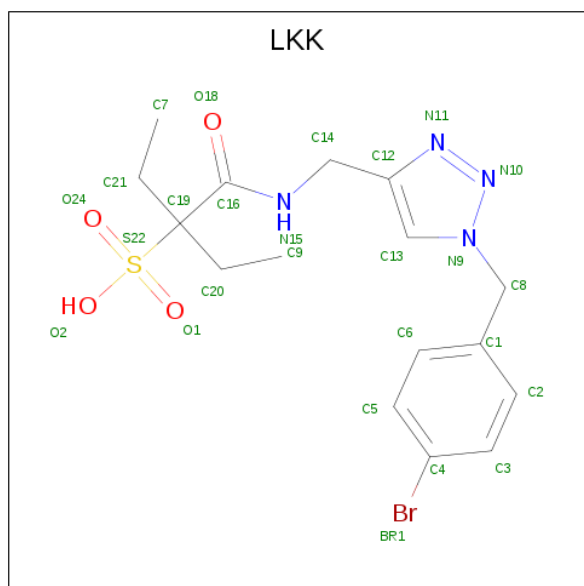


Mol	Chain	Residues	Atoms					ZeroOcc	AltConf	Trace
3	G	2	Total	C	H	N	O	0	0	0
			46	14	22	1	9			

- Molecule 4 is BROMIDE ION (three-letter code: BR) (formula: Br).

Mol	Chain	Residues	Atoms		ZeroOcc	AltConf
4	B	1	Total	Br	0	0
			1	1		
4	A	2	Total	Br	0	0
			2	2		
4	C	2	Total	Br	0	0
			2	2		

- Molecule 5 is 3-[[1-[(4-bromophenyl)methyl]-1,2,3-triazol-4-yl]methylcarbamoyl]pentane-3-sulfonic acid (three-letter code: LKK) (formula: C₁₆H₂₁BrN₄O₄S) (labeled as "Ligand of Interest" by author).



Mol	Chain	Residues	Atoms							ZeroOcc	AltConf
5	C	1	Total	Br	C	H	N	O	S	0	0
			45	1	16	20	4	3	1		

- Molecule 6 is 1,2-ETHANEDIOL (three-letter code: EDO) (formula: C₂H₆O₂).



Mol	Chain	Residues	Atoms				ZeroOcc	AltConf
6	C	1	Total	C	H	O	0	0
			10	2	6	2		
6	C	1	Total	C	H	O	0	0
			10	2	6	2		

- Molecule 7 is water.

Mol	Chain	Residues	Atoms		ZeroOcc	AltConf
7	A	32	Total	O	0	0
			32	32		
7	B	21	Total	O	0	0
			21	21		
7	C	57	Total	O	0	0
			57	57		

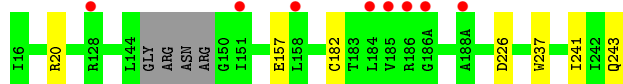
3 Residue-property plots [i](#)

These plots are drawn for all protein, RNA, DNA and oligosaccharide chains in the entry. The first graphic for a chain summarises the proportions of the various outlier classes displayed in the second graphic. The second graphic shows the sequence view annotated by issues in geometry and electron density. Residues are color-coded according to the number of geometric quality criteria for which they contain at least one outlier: green = 0, yellow = 1, orange = 2 and red = 3 or more. A red dot above a residue indicates a poor fit to the electron density ($RSRZ > 2$). Stretches of 2 or more consecutive residues without any outlier are shown as a green connector. Residues present in the sample, but not in the model, are shown in grey.

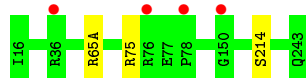
- Molecule 1: Neutrophil elastase



- Molecule 1: Neutrophil elastase



- Molecule 1: Neutrophil elastase



- Molecule 2: 2-acetamido-2-deoxy-beta-D-glucopyranose-(1-4)-[alpha-L-fucopyranose-(1-6)]2-acetamido-2-deoxy-beta-D-glucopyranose



- Molecule 2: 2-acetamido-2-deoxy-beta-D-glucopyranose-(1-4)-[alpha-L-fucopyranose-(1-6)]2-acetamido-2-deoxy-beta-D-glucopyranose



- Molecule 2: 2-acetamido-2-deoxy-beta-D-glucopyranose-(1-4)-[alpha-L-fucopyranose-(1-6)]2-acetamido-2-deoxy-beta-D-glucopyranose

Chain F:  67% 33%

HA01
HA02
FUC3

- Molecule 2: 2-acetamido-2-deoxy-beta-D-glucopyranose-(1-4)-[alpha-L-fucopyranose-(1-6)]2-acetamido-2-deoxy-beta-D-glucopyranose

Chain H:  33% 33% 33%

HA01
HA02
FUC3

- Molecule 2: 2-acetamido-2-deoxy-beta-D-glucopyranose-(1-4)-[alpha-L-fucopyranose-(1-6)]2-acetamido-2-deoxy-beta-D-glucopyranose

Chain I:  67% 33%

HA01
HA02
FUC3

- Molecule 3: alpha-L-fucopyranose-(1-6)-2-acetamido-2-deoxy-beta-D-glucopyranose

Chain G:  50% 50%

HA01
FUC2

4 Data and refinement statistics

Property	Value	Source
Space group	C 1 2 1	Depositor
Cell constants a, b, c, α , β , γ	116.67Å 105.91Å 79.47Å 90.00° 121.07° 90.00°	Depositor
Resolution (Å)	62.83 – 2.59 62.83 – 2.59	Depositor EDS
% Data completeness (in resolution range)	94.6 (62.83-2.59) 87.5 (62.83-2.59)	Depositor EDS
R_{merge}	(Not available)	Depositor
R_{sym}	(Not available)	Depositor
$\langle I/\sigma(I) \rangle$ ¹	2.05 (at 2.58Å)	Xtriage
Refinement program	BUSTER-TNT, PHENIX 1.14_3260	Depositor
R, R_{free}	0.215 , 0.258 0.226 , 0.261	Depositor DCC
R_{free} test set	1229 reflections (5.00%)	wwPDB-VP
Wilson B-factor (Å ²)	29.9	Xtriage
Anisotropy	0.145	Xtriage
Bulk solvent k_{sol} (e/Å ³), B_{sol} (Å ²)	0.43 , 39.1	EDS
L-test for twinning ²	$\langle L \rangle = 0.50$, $\langle L^2 \rangle = 0.33$	Xtriage
Estimated twinning fraction	No twinning to report.	Xtriage
F_o, F_c correlation	0.91	EDS
Total number of atoms	10356	wwPDB-VP
Average B, all atoms (Å ²)	45.0	wwPDB-VP

Xtriage's analysis on translational NCS is as follows: *The largest off-origin peak in the Patterson function is 6.01% of the height of the origin peak. No significant pseudotranslation is detected.*

¹Intensities estimated from amplitudes.

²Theoretical values of $\langle |L| \rangle$, $\langle L^2 \rangle$ for acentric reflections are 0.5, 0.333 respectively for untwinned datasets, and 0.375, 0.2 for perfectly twinned datasets.

5 Model quality [i](#)

5.1 Standard geometry [i](#)

Bond lengths and bond angles in the following residue types are not validated in this section: FUC, LKK, NAG, BR, EDO

The Z score for a bond length (or angle) is the number of standard deviations the observed value is removed from the expected value. A bond length (or angle) with $|Z| > 5$ is considered an outlier worth inspection. RMSZ is the root-mean-square of all Z scores of the bond lengths (or angles).

Mol	Chain	Bond lengths		Bond angles	
		RMSZ	# Z >5	RMSZ	# Z >5
1	A	0.25	0/1666	0.45	0/2263
1	B	0.26	0/1631	0.46	0/2216
1	C	0.26	0/1666	0.47	0/2263
All	All	0.25	0/4963	0.46	0/6742

There are no bond length outliers.

There are no bond angle outliers.

There are no chirality outliers.

There are no planarity outliers.

5.2 Too-close contacts [i](#)

In the following table, the Non-H and H(model) columns list the number of non-hydrogen atoms and hydrogen atoms in the chain respectively. The H(added) column lists the number of hydrogen atoms added and optimized by MolProbity. The Clashes column lists the number of clashes within the asymmetric unit, whereas Symm-Clashes lists symmetry related clashes.

Mol	Chain	Non-H	H(model)	H(added)	Clashes	Symm-Clashes
1	A	1636	1644	1650	6	0
1	B	1602	1607	1614	4	0
1	C	1636	1644	1649	2	1
2	D	38	34	34	0	0
2	E	38	34	34	0	0
2	F	38	34	34	0	0
2	H	38	35	34	1	0
2	I	38	34	34	0	0
3	G	24	22	22	0	0
4	A	2	0	0	2	1

Continued on next page...

Continued from previous page...

Mol	Chain	Non-H	H(model)	H(added)	Clashes	Symm-Clashes
4	B	1	0	0	0	0
4	C	2	0	0	0	0
5	C	25	20	0	1	0
6	C	8	12	12	0	0
7	A	32	0	0	2	0
7	B	21	0	0	1	0
7	C	57	0	0	0	0
All	All	5236	5120	5117	13	1

The all-atom clashscore is defined as the number of clashes found per 1000 atoms (including hydrogen atoms). The all-atom clashscore for this structure is 1.

All (13) close contacts within the same asymmetric unit are listed below, sorted by their clash magnitude.

Atom-1	Atom-2	Interatomic distance (Å)	Clash overlap (Å)
1:A:145:GLY:O	7:A:401:HOH:O	2.00	0.78
1:A:128:ARG:NH1	1:A:129:ARG:O	2.22	0.73
1:B:243:GLN:O	7:B:401:HOH:O	2.11	0.66
1:C:214:SER:O	5:C:309:LKK:N15	2.33	0.61
1:C:65(A):ARG:HE	2:H:3:FUC:H63	1.66	0.60
1:B:237:TRP:CE2	1:B:241:ILE:HD11	2.43	0.54
1:B:20:ARG:NH2	1:B:157:GLU:OE2	2.44	0.51
4:A:308:BR:BR	7:A:426:HOH:O	2.76	0.47
1:A:75:ARG:O	1:A:80:ARG:NH2	2.48	0.46
1:A:20:ARG:HG2	4:A:308:BR:BR	2.72	0.44
1:B:182:CYS:HA	1:B:226:ASP:O	2.19	0.42
1:A:51:PHE:CG	1:A:242:ILE:HG22	2.55	0.41
1:A:242:ILE:O	1:A:243:GLN:OXT	2.40	0.40

All (1) symmetry-related close contacts are listed below. The label for Atom-2 includes the symmetry operator and encoded unit-cell translations to be applied.

Atom-1	Atom-2	Interatomic distance (Å)	Clash overlap (Å)
1:C:75:ARG:HH22	4:A:308:BR:BR[4_546]	1.50	0.10

5.3 Torsion angles

5.3.1 Protein backbone

In the following table, the Percentiles column shows the percent Ramachandran outliers of the chain as a percentile score with respect to all X-ray entries followed by that with respect to entries of similar resolution.

The Analysed column shows the number of residues for which the backbone conformation was analysed, and the total number of residues.

Mol	Chain	Analysed	Favoured	Allowed	Outliers	Percentiles	
1	A	216/218 (99%)	210 (97%)	6 (3%)	0	100	100
1	B	210/218 (96%)	206 (98%)	4 (2%)	0	100	100
1	C	216/218 (99%)	211 (98%)	5 (2%)	0	100	100
All	All	642/654 (98%)	627 (98%)	15 (2%)	0	100	100

There are no Ramachandran outliers to report.

5.3.2 Protein sidechains

In the following table, the Percentiles column shows the percent sidechain outliers of the chain as a percentile score with respect to all X-ray entries followed by that with respect to entries of similar resolution.

The Analysed column shows the number of residues for which the sidechain conformation was analysed, and the total number of residues.

Mol	Chain	Analysed	Rotameric	Outliers	Percentiles	
1	A	172/172 (100%)	172 (100%)	0	100	100
1	B	169/172 (98%)	169 (100%)	0	100	100
1	C	172/172 (100%)	172 (100%)	0	100	100
All	All	513/516 (99%)	513 (100%)	0	100	100

There are no protein residues with a non-rotameric sidechain to report.

Some sidechains can be flipped to improve hydrogen bonding and reduce clashes. There are no such sidechains identified.

5.3.3 RNA

There are no RNA molecules in this entry.

5.4 Non-standard residues in protein, DNA, RNA chains ⓘ

There are no non-standard protein/DNA/RNA residues in this entry.

5.5 Carbohydrates ⓘ

17 monosaccharides are modelled in this entry.

In the following table, the Counts columns list the number of bonds (or angles) for which Mogul statistics could be retrieved, the number of bonds (or angles) that are observed in the model and the number of bonds (or angles) that are defined in the Chemical Component Dictionary. The Link column lists molecule types, if any, to which the group is linked. The Z score for a bond length (or angle) is the number of standard deviations the observed value is removed from the expected value. A bond length (or angle) with $|Z| > 2$ is considered an outlier worth inspection. RMSZ is the root-mean-square of all Z scores of the bond lengths (or angles).

Mol	Type	Chain	Res	Link	Bond lengths			Bond angles		
					Counts	RMSZ	# $ Z > 2$	Counts	RMSZ	# $ Z > 2$
2	NAG	D	1	1,2	14,14,15	0.38	0	17,19,21	0.47	0
2	NAG	D	2	2	14,14,15	0.58	0	17,19,21	0.52	0
2	FUC	D	3	2	10,10,11	0.69	0	14,14,16	1.89	4 (28%)
2	NAG	E	1	1,2	14,14,15	0.27	0	17,19,21	0.44	0
2	NAG	E	2	2	14,14,15	0.28	0	17,19,21	0.52	0
2	FUC	E	3	2	10,10,11	0.85	1 (10%)	14,14,16	0.83	0
2	NAG	F	1	1,2	14,14,15	0.31	0	17,19,21	0.43	0
2	NAG	F	2	2	14,14,15	0.63	0	17,19,21	0.57	0
2	FUC	F	3	2	10,10,11	0.81	1 (10%)	14,14,16	0.81	0
3	NAG	G	1	1,3	14,14,15	0.28	0	17,19,21	0.43	0
3	FUC	G	2	3	10,10,11	0.63	0	14,14,16	1.91	3 (21%)
2	NAG	H	1	1,2	14,14,15	0.36	0	17,19,21	0.44	0
2	NAG	H	2	2	14,14,15	0.67	1 (7%)	17,19,21	0.56	0
2	FUC	H	3	2	10,10,11	0.63	0	14,14,16	1.89	3 (21%)
2	NAG	I	1	1,2	14,14,15	0.32	0	17,19,21	0.46	0
2	NAG	I	2	2	14,14,15	0.39	0	17,19,21	0.51	0
2	FUC	I	3	2	10,10,11	0.80	1 (10%)	14,14,16	0.93	0

In the following table, the Chirals column lists the number of chiral outliers, the number of chiral centers analysed, the number of these observed in the model and the number defined in the Chemical Component Dictionary. Similar counts are reported in the Torsion and Rings columns. '-' means no outliers of that kind were identified.

Mol	Type	Chain	Res	Link	Chirals	Torsions	Rings
2	NAG	D	1	1,2	-	1/6/23/26	0/1/1/1

Continued on next page...

Continued from previous page...

Mol	Type	Chain	Res	Link	Chirals	Torsions	Rings
2	NAG	D	2	2	-	4/6/23/26	0/1/1/1
2	FUC	D	3	2	-	-	0/1/1/1
2	NAG	E	1	1,2	-	0/6/23/26	0/1/1/1
2	NAG	E	2	2	-	2/6/23/26	0/1/1/1
2	FUC	E	3	2	-	-	0/1/1/1
2	NAG	F	1	1,2	-	0/6/23/26	0/1/1/1
2	NAG	F	2	2	-	4/6/23/26	0/1/1/1
2	FUC	F	3	2	-	-	0/1/1/1
3	NAG	G	1	1,3	-	0/6/23/26	0/1/1/1
3	FUC	G	2	3	-	-	0/1/1/1
2	NAG	H	1	1,2	-	1/6/23/26	0/1/1/1
2	NAG	H	2	2	-	4/6/23/26	0/1/1/1
2	FUC	H	3	2	-	-	0/1/1/1
2	NAG	I	1	1,2	-	0/6/23/26	0/1/1/1
2	NAG	I	2	2	-	2/6/23/26	0/1/1/1
2	FUC	I	3	2	-	-	0/1/1/1

All (4) bond length outliers are listed below:

Mol	Chain	Res	Type	Atoms	Z	Observed(Å)	Ideal(Å)
2	H	2	NAG	O5-C1	-2.20	1.40	1.43
2	E	3	FUC	O5-C1	-2.18	1.40	1.43
2	F	3	FUC	O5-C1	-2.09	1.40	1.43
2	I	3	FUC	O5-C1	-2.01	1.40	1.43

All (10) bond angle outliers are listed below:

Mol	Chain	Res	Type	Atoms	Z	Observed(°)	Ideal(°)
2	H	3	FUC	O5-C1-C2	4.37	117.52	110.77
3	G	2	FUC	O5-C1-C2	4.23	117.30	110.77
2	D	3	FUC	O5-C1-C2	4.17	117.20	110.77
3	G	2	FUC	C1-C2-C3	3.94	114.51	109.67
2	H	3	FUC	C1-C2-C3	3.79	114.33	109.67
2	D	3	FUC	C1-C2-C3	3.78	114.31	109.67
3	G	2	FUC	C1-O5-C5	3.22	120.07	112.78
2	D	3	FUC	C1-O5-C5	3.19	120.01	112.78
2	H	3	FUC	C1-O5-C5	3.17	119.95	112.78
2	D	3	FUC	O5-C5-C4	2.05	113.19	109.52

There are no chirality outliers.

All (18) torsion outliers are listed below:

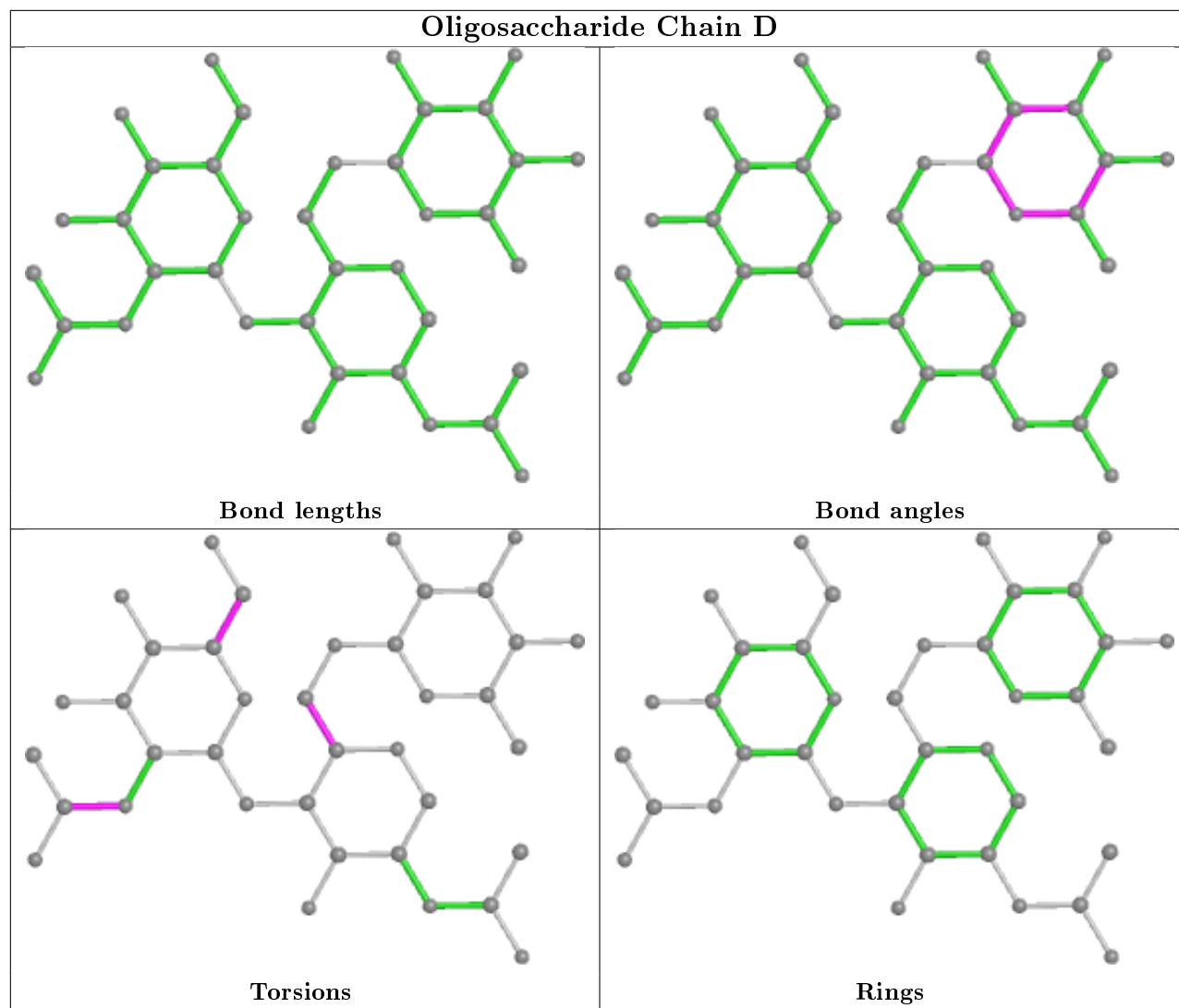
Mol	Chain	Res	Type	Atoms
2	F	2	NAG	C4-C5-C6-O6
2	F	2	NAG	O5-C5-C6-O6
2	E	2	NAG	C8-C7-N2-C2
2	E	2	NAG	O7-C7-N2-C2
2	I	2	NAG	C8-C7-N2-C2
2	I	2	NAG	O7-C7-N2-C2
2	D	2	NAG	C8-C7-N2-C2
2	D	2	NAG	O7-C7-N2-C2
2	F	2	NAG	C8-C7-N2-C2
2	F	2	NAG	O7-C7-N2-C2
2	H	2	NAG	C8-C7-N2-C2
2	H	2	NAG	O7-C7-N2-C2
2	H	2	NAG	C4-C5-C6-O6
2	D	2	NAG	O5-C5-C6-O6
2	D	2	NAG	C4-C5-C6-O6
2	H	2	NAG	O5-C5-C6-O6
2	H	1	NAG	C4-C5-C6-O6
2	D	1	NAG	C4-C5-C6-O6

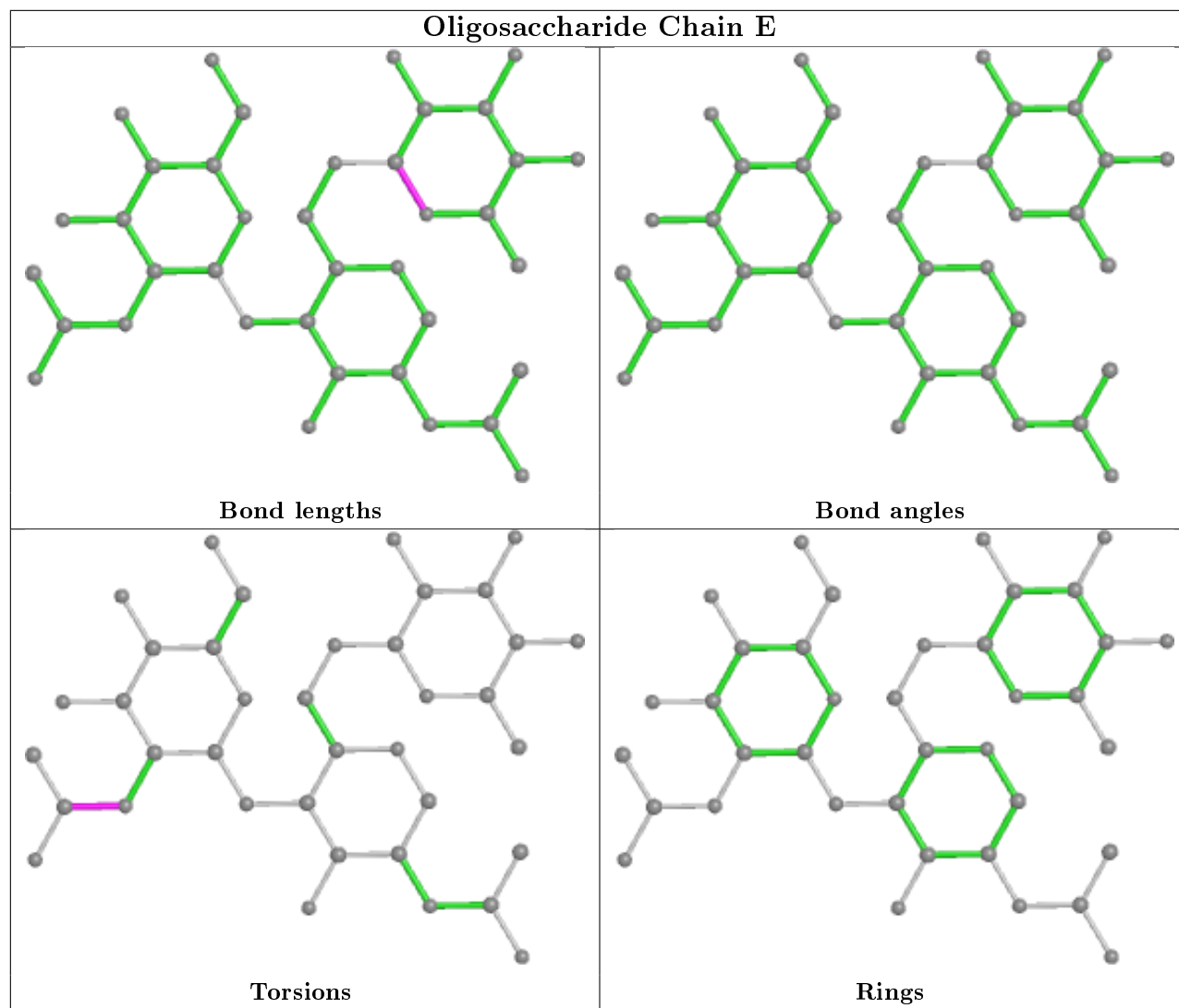
There are no ring outliers.

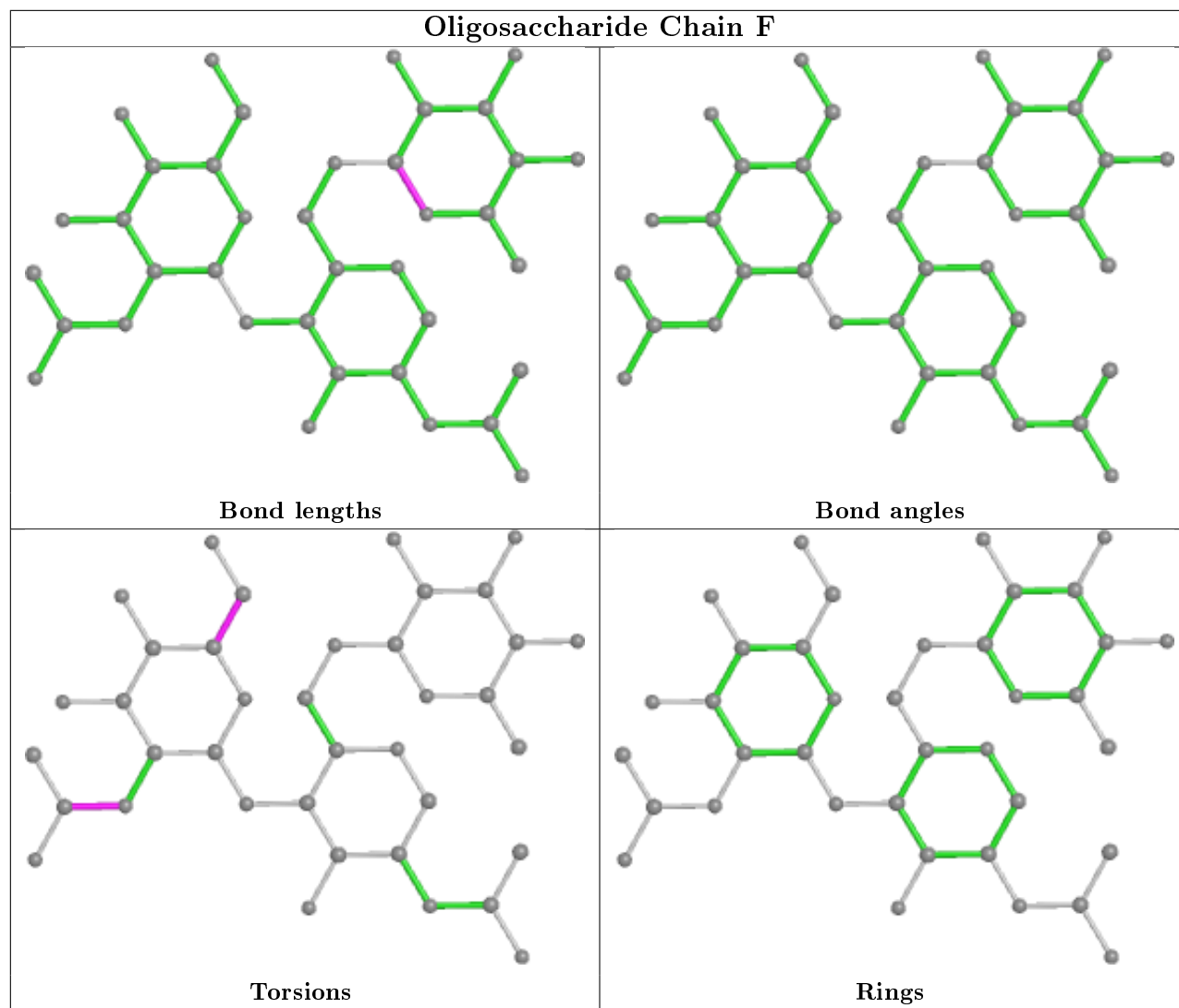
1 monomer is involved in 1 short contact:

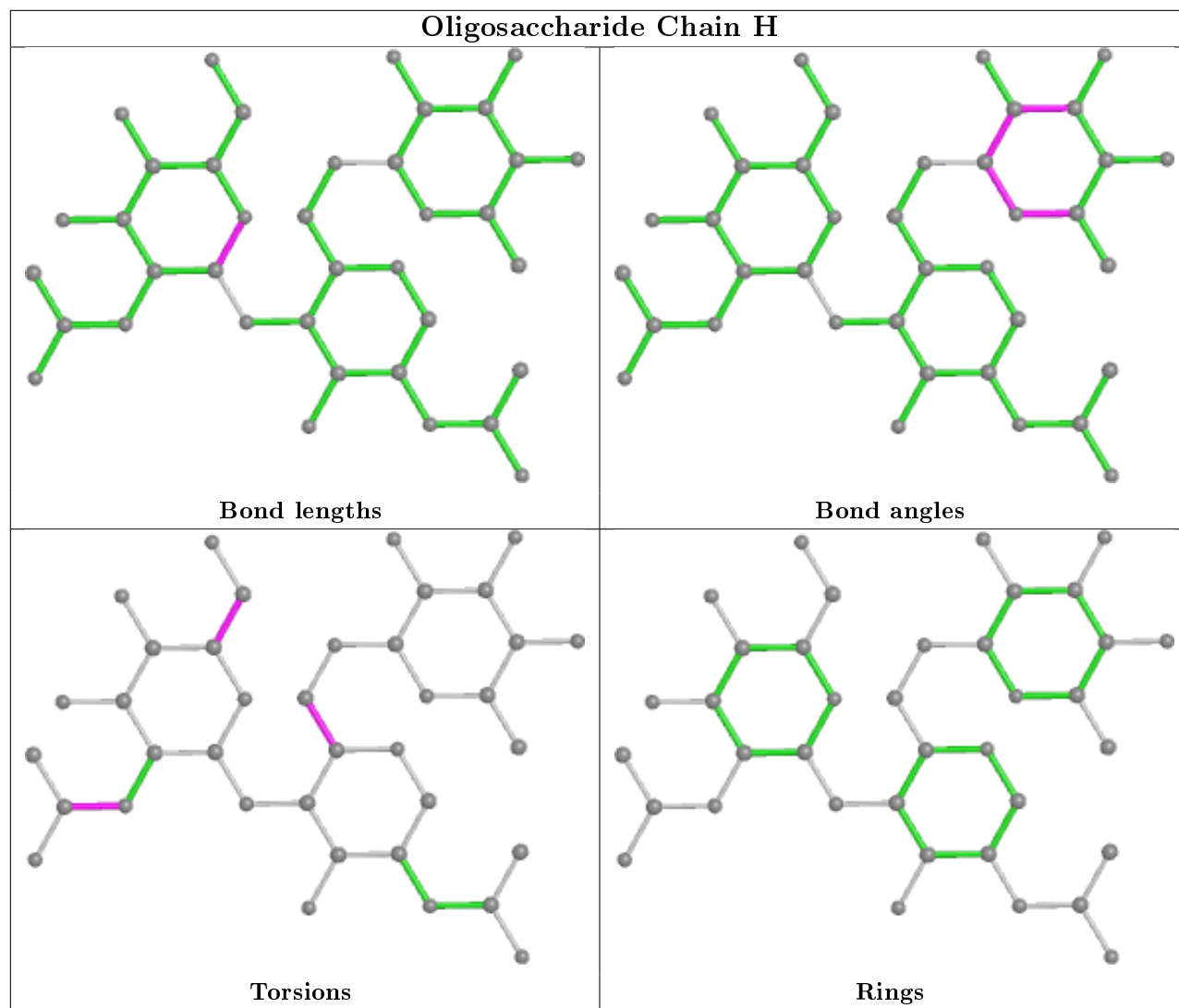
Mol	Chain	Res	Type	Clashes	Symm-Clashes
2	H	3	FUC	1	0

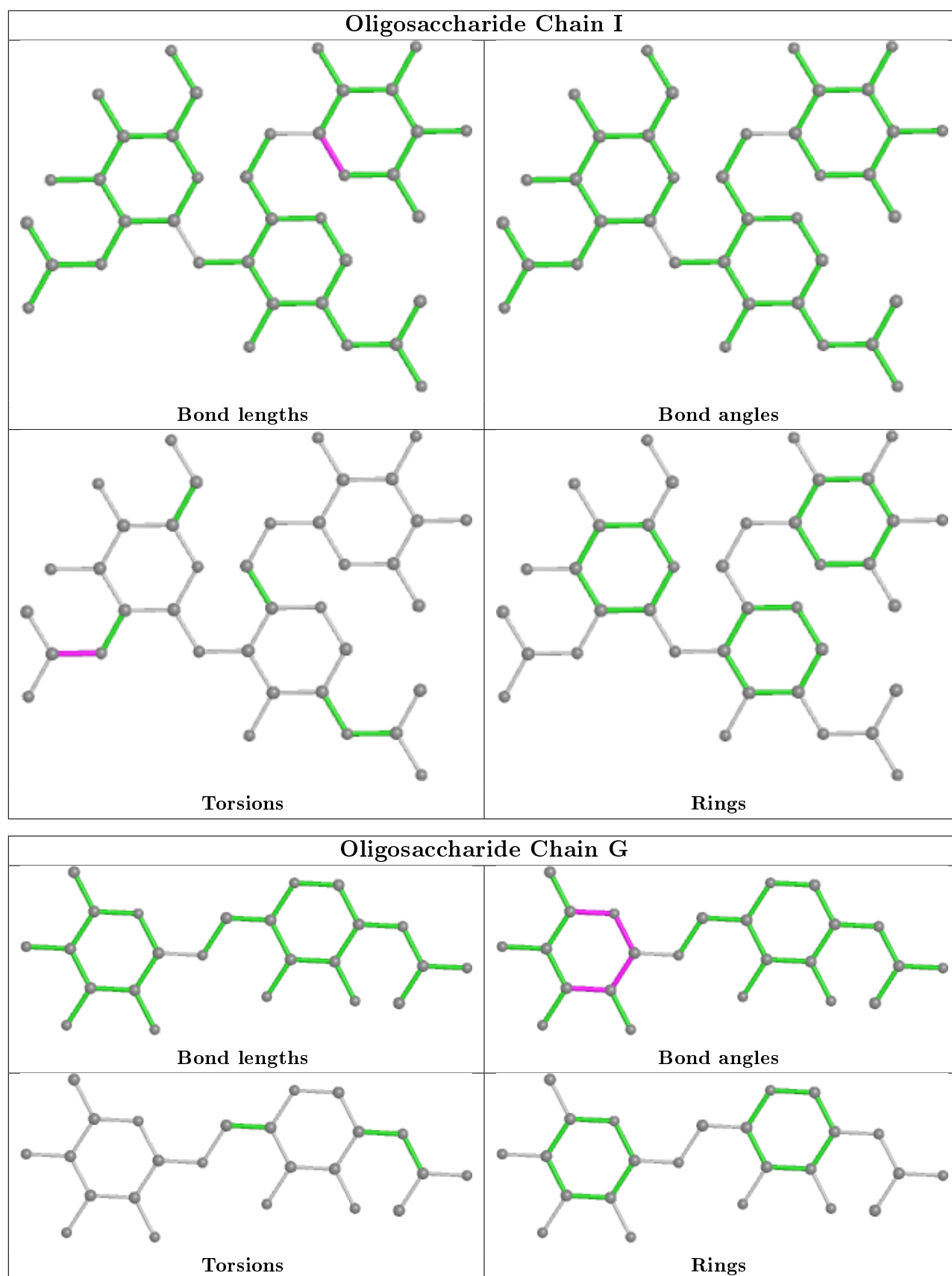
The following is a two-dimensional graphical depiction of Mogul quality analysis of bond lengths, bond angles, torsion angles, and ring geometry for oligosaccharide.











5.6 Ligand geometry

Of 8 ligands modelled in this entry, 5 are monoatomic - leaving 3 for Mogul analysis.

In the following table, the Counts columns list the number of bonds (or angles) for which Mogul statistics could be retrieved, the number of bonds (or angles) that are observed in the model and the number of bonds (or angles) that are defined in the Chemical Component Dictionary. The Link column lists molecule types, if any, to which the group is linked. The Z score for a bond length (or angle) is the number of standard deviations the observed value is removed from the expected value. A bond length (or angle) with $|Z| > 2$ is considered an outlier worth inspection. RMSZ is the root-mean-square of all Z scores of the bond lengths (or angles).

Mol	Type	Chain	Res	Link	Bond lengths			Bond angles		
					Counts	RMSZ	# Z > 2	Counts	RMSZ	# Z > 2
6	EDO	C	311	-	3,3,3	0.45	0	2,2,2	0.33	0
5	LKK	C	309	1	21,26,27	2.49	6 (28%)	24,36,39	1.75	3 (12%)
6	EDO	C	310	-	3,3,3	0.44	0	2,2,2	0.44	0

In the following table, the Chirals column lists the number of chiral outliers, the number of chiral centers analysed, the number of these observed in the model and the number defined in the Chemical Component Dictionary. Similar counts are reported in the Torsion and Rings columns. '-' means no outliers of that kind were identified.

Mol	Type	Chain	Res	Link	Chirals	Torsions	Rings
6	EDO	C	311	-	-	0/1/1/1	-
5	LKK	C	309	1	-	4/17/27/30	0/2/2/2
6	EDO	C	310	-	-	1/1/1/1	-

All (6) bond length outliers are listed below:

Mol	Chain	Res	Type	Atoms	Z	Observed(Å)	Ideal(Å)
5	C	309	LKK	C16-N15	6.95	1.47	1.34
5	C	309	LKK	C13-C12	4.97	1.43	1.36
5	C	309	LKK	C8-C1	3.53	1.59	1.51
5	C	309	LKK	BR1-C4	3.24	1.96	1.90
5	C	309	LKK	C14-C12	2.81	1.56	1.51
5	C	309	LKK	O18-C16	-2.10	1.19	1.22

All (3) bond angle outliers are listed below:

Mol	Chain	Res	Type	Atoms	Z	Observed(°)	Ideal(°)
5	C	309	LKK	C8-N9-C13	-5.38	122.33	129.19
5	C	309	LKK	C13-C12-N11	-3.61	105.98	111.34
5	C	309	LKK	N11-N10-N9	3.48	109.94	107.31

There are no chirality outliers.

All (5) torsion outliers are listed below:

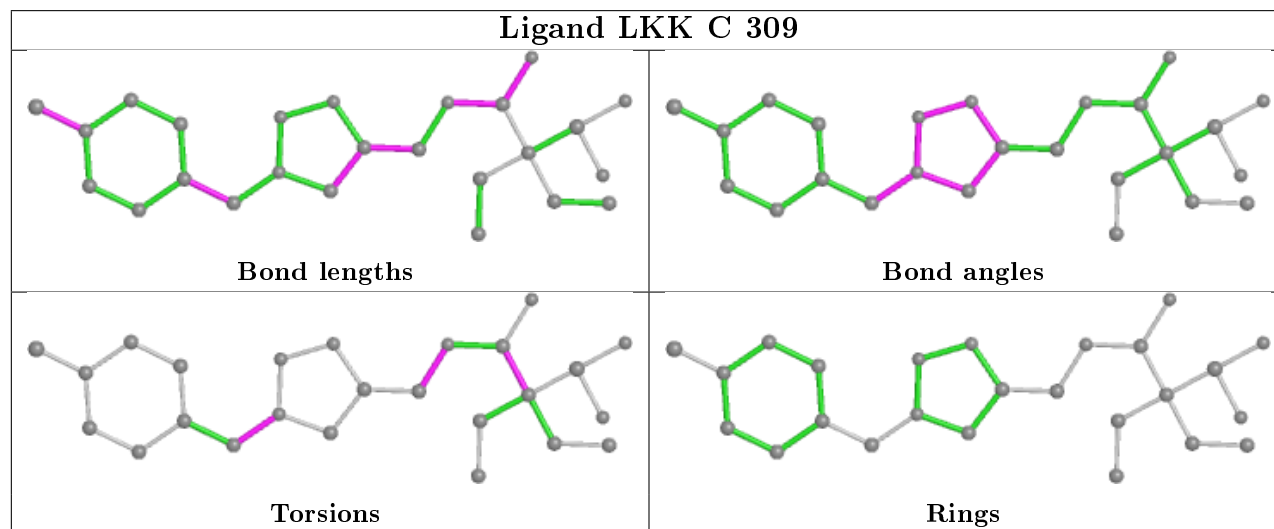
Mol	Chain	Res	Type	Atoms
5	C	309	LKK	C12-C14-N15-C16
5	C	309	LKK	C1-C8-N9-C13
6	C	310	EDO	O1-C1-C2-O2
5	C	309	LKK	N15-C16-C19-C20
5	C	309	LKK	O18-C16-C19-C20

There are no ring outliers.

1 monomer is involved in 1 short contact:

Mol	Chain	Res	Type	Clashes	Symm-Clashes
5	C	309	LKK	1	0

The following is a two-dimensional graphical depiction of Mogul quality analysis of bond lengths, bond angles, torsion angles, and ring geometry for all instances of the Ligand of Interest. In addition, ligands with molecular weight > 250 and outliers as shown on the validation Tables will also be included. For torsion angles, if less than 5% of the Mogul distribution of torsion angles is within 10 degrees of the torsion angle in question, then that torsion angle is considered an outlier. Any bond that is central to one or more torsion angles identified as an outlier by Mogul will be highlighted in the graph. For rings, the root-mean-square deviation (RMSD) between the ring in question and similar rings identified by Mogul is calculated over all ring torsion angles. If the average RMSD is greater than 60 degrees and the minimal RMSD between the ring in question and any Mogul-identified rings is also greater than 60 degrees, then that ring is considered an outlier. The outliers are highlighted in purple. The color gray indicates Mogul did not find sufficient equivalents in the CSD to analyse the geometry.



5.7 Other polymers

There are no such residues in this entry.

5.8 Polymer linkage issues

There are no chain breaks in this entry.

6 Fit of model and data [i](#)

6.1 Protein, DNA and RNA chains [i](#)

In the following table, the column labelled ‘#RSRZ> 2’ contains the number (and percentage) of RSRZ outliers, followed by percent RSRZ outliers for the chain as percentile scores relative to all X-ray entries and entries of similar resolution. The OWAB column contains the minimum, median, 95th percentile and maximum values of the occupancy-weighted average B-factor per residue. The column labelled ‘Q< 0.9’ lists the number of (and percentage) of residues with an average occupancy less than 0.9.

Mol	Chain	Analysed	<RSRZ>	#RSRZ>2	OWAB(Å ²)	Q<0.9
1	A	218/218 (100%)	0.30	5 (2%) 60 54	29, 39, 53, 76	0
1	B	214/218 (98%)	0.42	8 (3%) 41 34	29, 41, 58, 81	0
1	C	218/218 (100%)	0.18	4 (1%) 68 64	27, 34, 50, 68	0
All	All	650/654 (99%)	0.30	17 (2%) 56 50	27, 38, 56, 81	0

All (17) RSRZ outliers are listed below:

Mol	Chain	Res	Type	RSRZ
1	B	186	ARG	4.1
1	B	186(A)	GLY	3.5
1	A	36	ARG	3.4
1	B	184	LEU	3.0
1	C	76	ARG	3.0
1	A	147	ARG	2.9
1	B	185	VAL	2.9
1	A	186	ARG	2.7
1	A	76	ARG	2.6
1	C	36	ARG	2.3
1	B	151	ILE	2.3
1	B	128	ARG	2.3
1	C	150	GLY	2.2
1	C	78	PRO	2.2
1	B	158	LEU	2.1
1	B	188(A)	ALA	2.1
1	A	223	LEU	2.0

6.2 Non-standard residues in protein, DNA, RNA chains [i](#)

There are no non-standard protein/DNA/RNA residues in this entry.

6.3 Carbohydrates

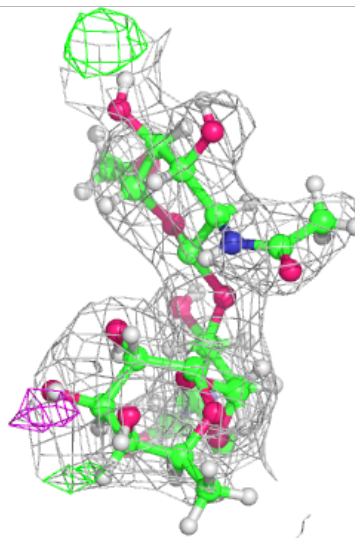
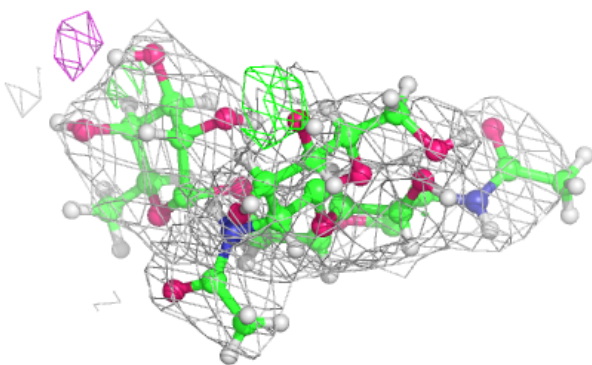
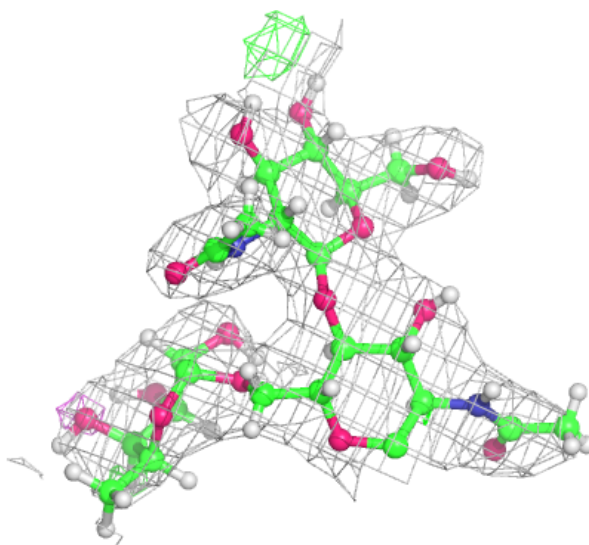
In the following table, the Atoms column lists the number of modelled atoms in the group and the number defined in the chemical component dictionary. The B-factors column lists the minimum, median, 95th percentile and maximum values of B factors of atoms in the group. The column labelled 'Q< 0.9' lists the number of atoms with occupancy less than 0.9.

Mol	Type	Chain	Res	Atoms	RSCC	RSR	B-factors(Å ²)	Q<0.9
2	NAG	F	2	14/15	0.76	0.20	64,67,80,81	0
2	NAG	H	2	14/15	0.79	0.26	54,64,77,77	0
3	NAG	G	1	14/15	0.80	0.24	51,61,73,74	0
2	NAG	E	2	14/15	0.85	0.22	54,58,69,70	0
2	FUC	H	3	10/11	0.85	0.25	57,63,75,76	0
2	NAG	I	2	14/15	0.85	0.22	53,57,69,70	0
2	NAG	D	2	14/15	0.86	0.17	48,53,64,64	0
2	NAG	F	1	14/15	0.87	0.18	43,58,69,70	0
2	NAG	H	1	14/15	0.89	0.16	41,56,63,68	0
2	FUC	D	3	10/11	0.91	0.19	49,52,61,62	0
2	NAG	E	1	14/15	0.91	0.15	43,53,64,64	0
2	FUC	F	3	10/11	0.91	0.17	62,66,78,79	0
2	NAG	D	1	14/15	0.94	0.15	33,47,56,58	0
2	NAG	I	1	14/15	0.94	0.17	35,46,54,58	0
3	FUC	G	2	10/11	0.94	0.18	45,50,56,56	0
2	FUC	I	3	10/11	0.94	0.22	38,41,48,49	0
2	FUC	E	3	10/11	0.97	0.17	42,44,52,53	0

The following is a graphical depiction of the model fit to experimental electron density for oligosaccharide. Each fit is shown from different orientation to approximate a three-dimensional view.

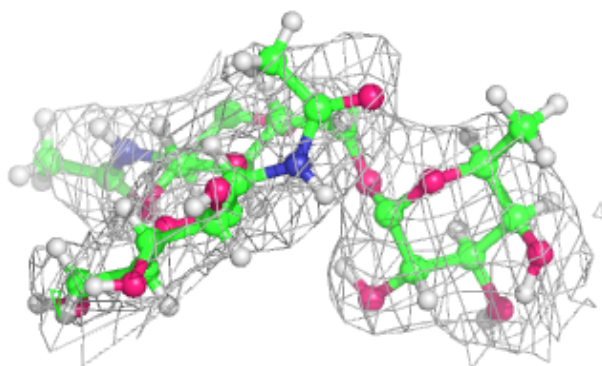
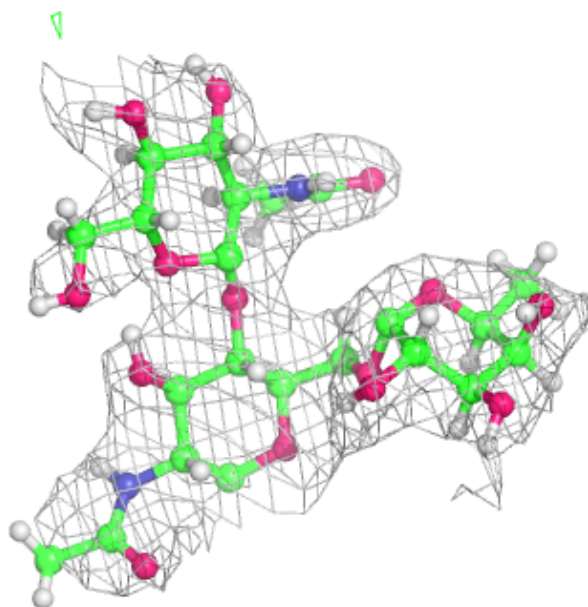
Electron density around Chain D:

$2mF_o-DF_c$ (at 0.7 rmsd) in gray
 mF_o-DF_c (at 3 rmsd) in purple (negative)
and green (positive)



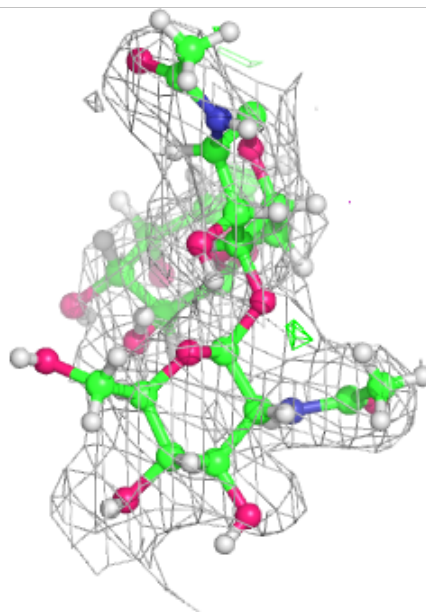
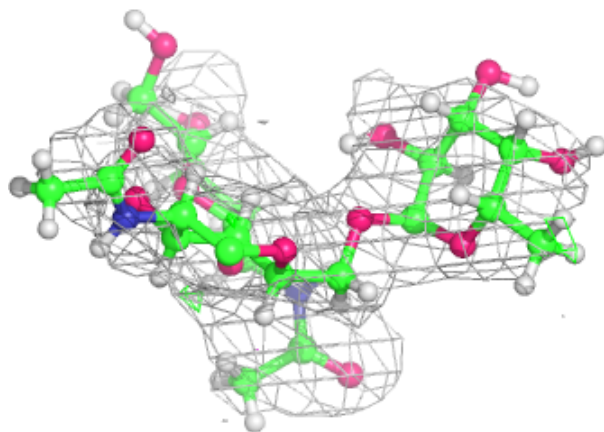
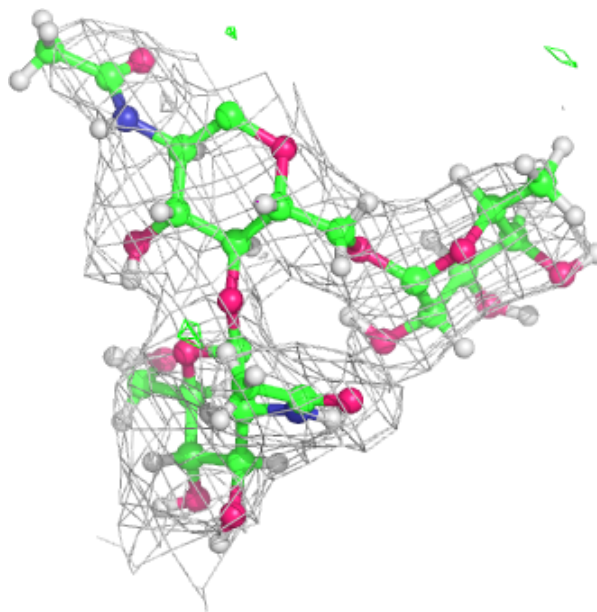
Electron density around Chain E:

$2mF_o-DF_c$ (at 0.7 rmsd) in gray
 mF_o-DF_c (at 3 rmsd) in purple (negative)
and green (positive)



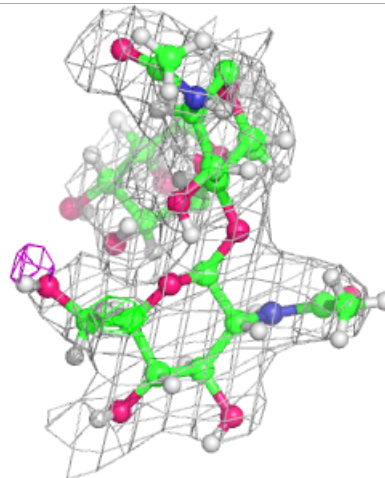
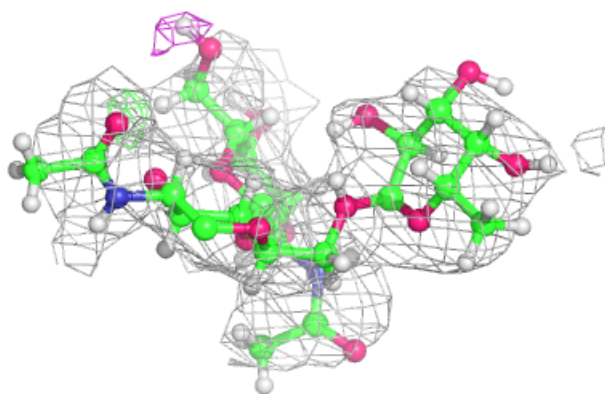
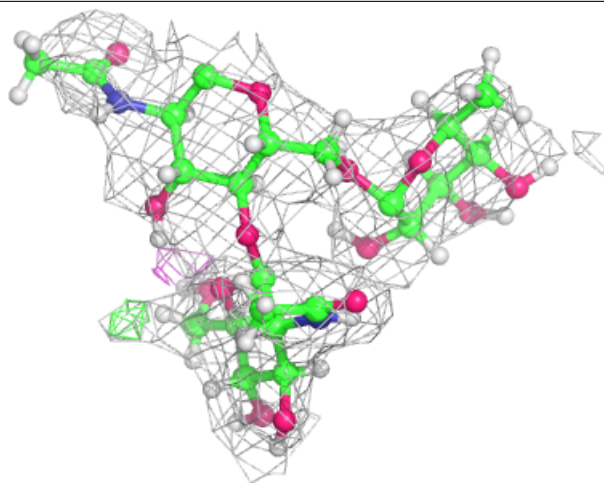
Electron density around Chain F:

$2mF_o-DF_c$ (at 0.7 rmsd) in gray
 mF_o-DF_c (at 3 rmsd) in purple (negative)
and green (positive)



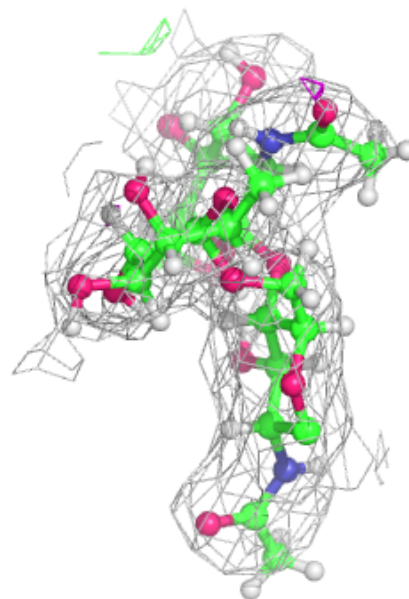
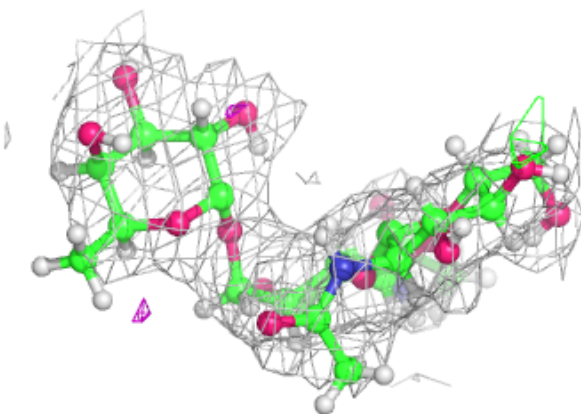
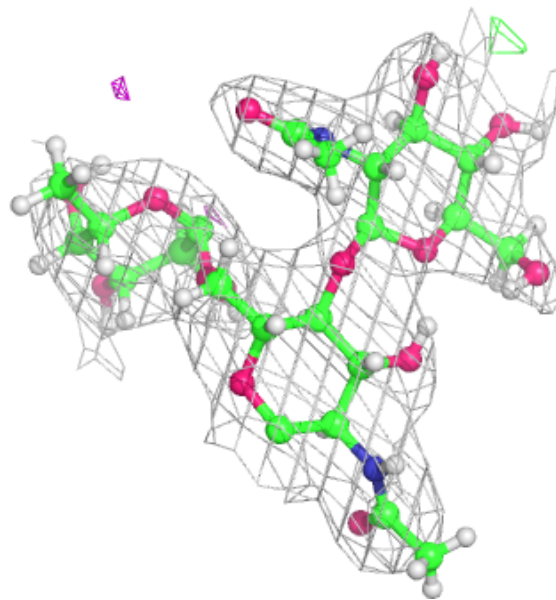
Electron density around Chain H:

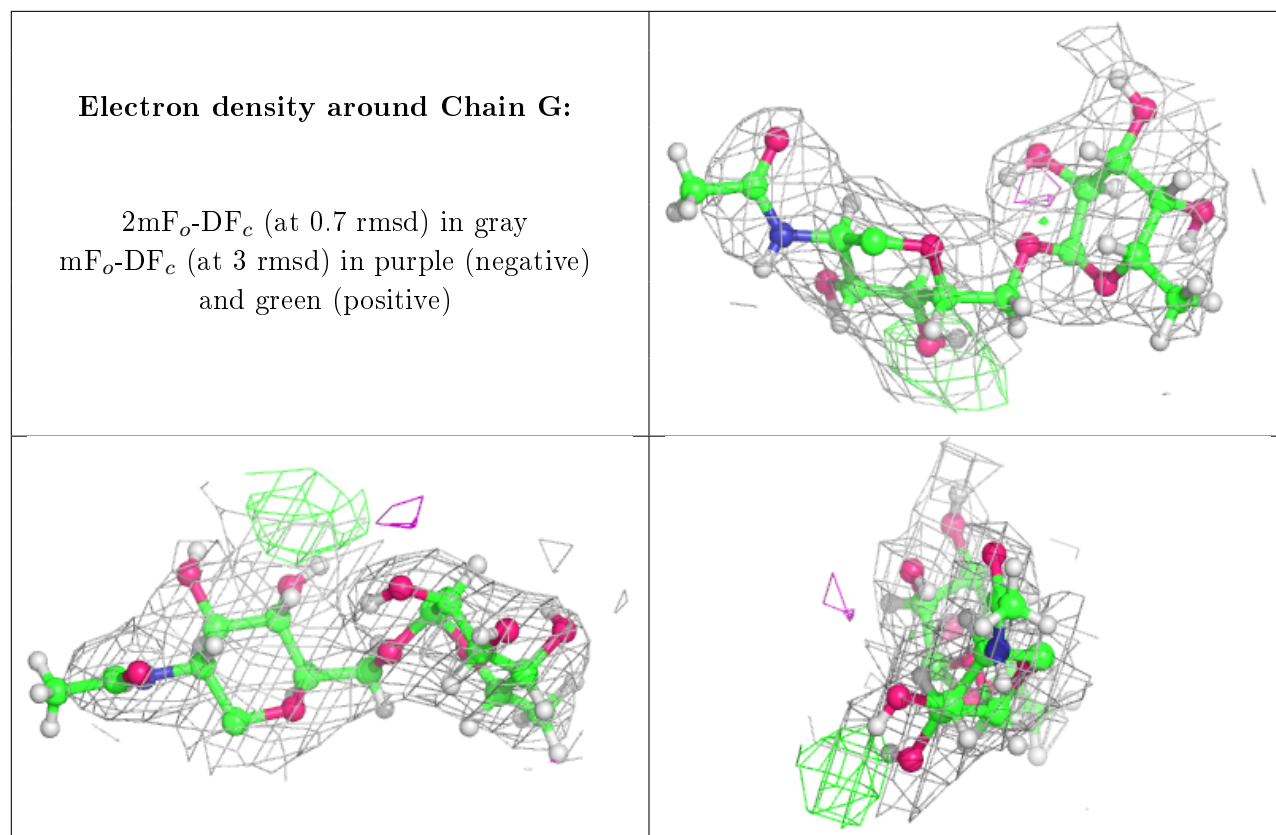
$2mF_o-DF_c$ (at 0.7 rmsd) in gray
 mF_o-DF_c (at 3 rmsd) in purple (negative)
and green (positive)



Electron density around Chain I:

$2mF_o-DF_c$ (at 0.7 rmsd) in gray
 mF_o-DF_c (at 3 rmsd) in purple (negative)
and green (positive)



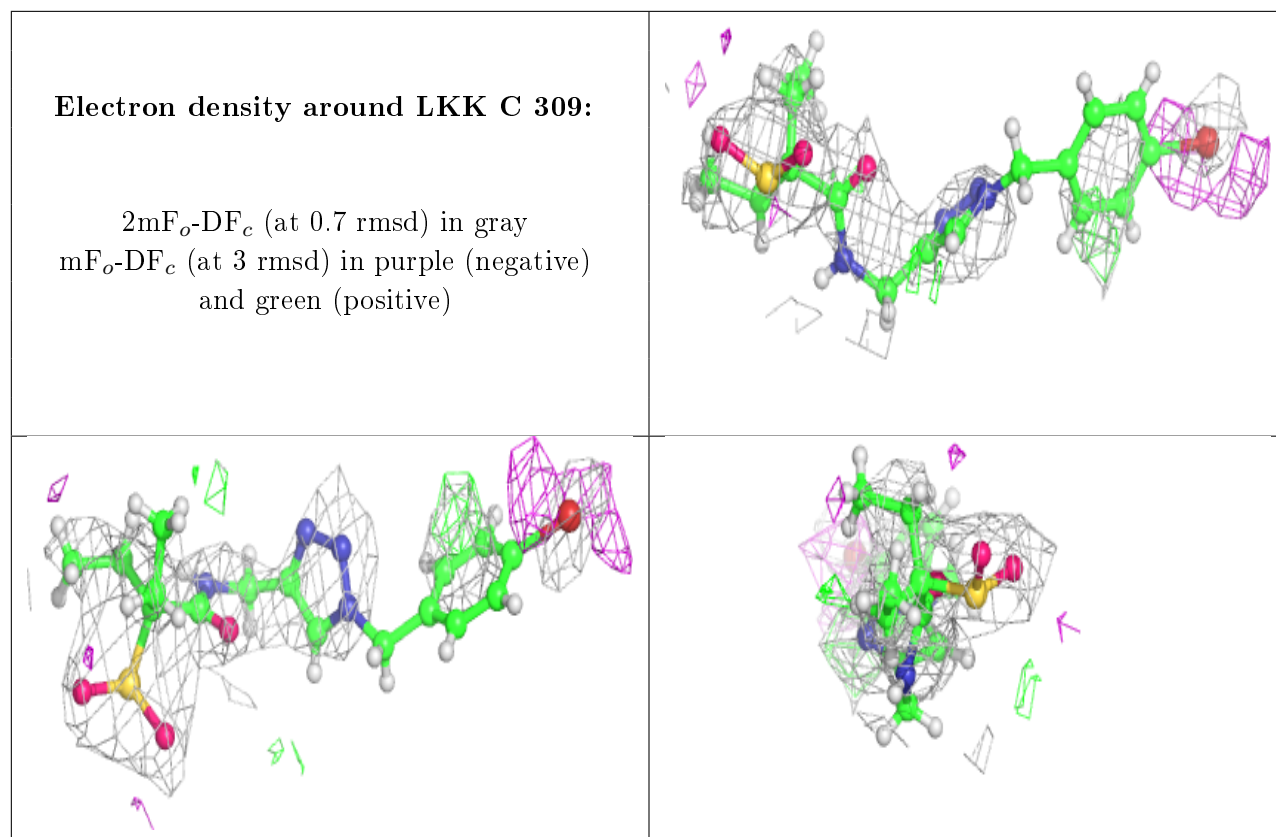


6.4 Ligands ⓘ

In the following table, the Atoms column lists the number of modelled atoms in the group and the number defined in the chemical component dictionary. The B-factors column lists the minimum, median, 95th percentile and maximum values of B factors of atoms in the group. The column labelled 'Q< 0.9' lists the number of atoms with occupancy less than 0.9.

Mol	Type	Chain	Res	Atoms	RSCC	RSR	B-factors(Å ²)	Q<0.9
5	LKK	C	309	25/26	0.86	0.34	36,73,124,128	0
6	EDO	C	310	4/4	0.91	0.28	33,40,42,43	0
4	BR	B	306	1/1	0.93	0.09	89,89,89,89	0
6	EDO	C	311	4/4	0.96	0.29	37,44,46,46	0
4	BR	A	308	1/1	0.96	0.08	78,78,78,78	0
4	BR	C	307	1/1	0.98	0.10	69,69,69,69	0
4	BR	C	308	1/1	0.98	0.08	72,72,72,72	0
4	BR	A	307	1/1	0.99	0.09	57,57,57,57	0

The following is a graphical depiction of the model fit to experimental electron density of all instances of the Ligand of Interest. In addition, ligands with molecular weight > 250 and outliers as shown on the geometry validation Tables will also be included. Each fit is shown from different orientation to approximate a three-dimensional view.



6.5 Other polymers [i](#)

There are no such residues in this entry.