



# Full wwPDB X-ray Structure Validation Report ⓘ

Jul 6, 2022 – 12:30 PM EDT

PDB ID : 5SPC  
Title : PanDDA analysis group deposition – Crystal structure of SARS-CoV-2 NSP3  
macrodomein in complex with Z5010894387 - (R,R) and (S,S) isomers  
Authors : Correy, G.J.; Fraser, J.S.  
Deposited on : 2022-06-09  
Resolution : 1.05 Å(reported)

This is a Full wwPDB X-ray Structure Validation Report for a publicly released PDB entry.

We welcome your comments at [validation@mail.wwpdb.org](mailto:validation@mail.wwpdb.org)

A user guide is available at

<https://www.wwpdb.org/validation/2017/XrayValidationReportHelp>

with specific help available everywhere you see the ⓘ symbol.

The types of validation reports are described at <http://www.wwpdb.org/validation/2017/FAQs#types>.

---

The following versions of software and data (see [references ⓘ](#)) were used in the production of this report:

MolProbity	:	4.02b-467
Mogul	:	1.8.5 (274361), CSD as541be (2020)
Xtriage (Phenix)	:	1.13
EDS	:	2.29
buster-report	:	1.1.7 (2018)
Percentile statistics	:	20191225.v01 (using entries in the PDB archive December 25th 2019)
Refmac	:	5.8.0158
CCP4	:	7.0.044 (Gargrove)
Ideal geometry (proteins)	:	Engh & Huber (2001)
Ideal geometry (DNA, RNA)	:	Parkinson et al. (1996)
Validation Pipeline (wwPDB-VP)	:	2.29

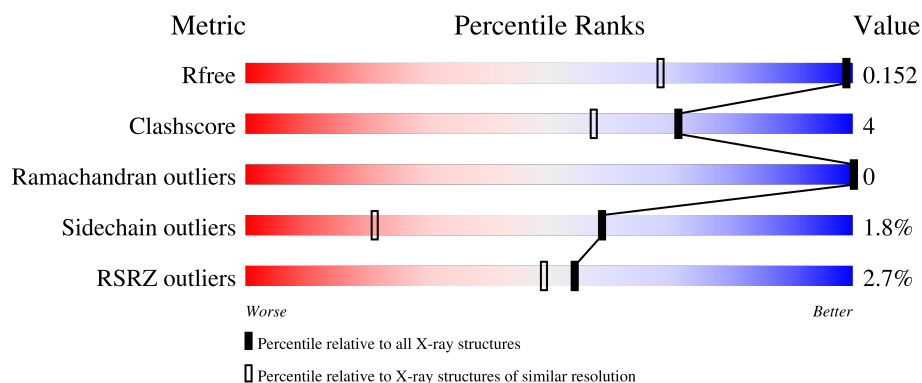
# 1 Overall quality at a glance

The following experimental techniques were used to determine the structure:

*X-RAY DIFFRACTION*

The reported resolution of this entry is 1.05 Å.

Percentile scores (ranging between 0-100) for global validation metrics of the entry are shown in the following graphic. The table shows the number of entries on which the scores are based.



Metric	Whole archive (#Entries)	Similar resolution (#Entries, resolution range(Å))
$R_{free}$	130704	1202 (1.10-1.02)
Clashscore	141614	1252 (1.10-1.02)
Ramachandran outliers	138981	1204 (1.10-1.02)
Sidechain outliers	138945	1202 (1.10-1.02)
RSRZ outliers	127900	1178 (1.10-1.02)

The table below summarises the geometric issues observed across the polymeric chains and their fit to the electron density. The red, orange, yellow and green segments of the lower bar indicate the fraction of residues that contain outliers for  $\geq 3$ , 2, 1 and 0 types of geometric quality criteria respectively. A grey segment represents the fraction of residues that are not modelled. The numeric value for each fraction is indicated below the corresponding segment, with a dot representing fractions  $\leq 5\%$ . The upper red bar (where present) indicates the fraction of residues that have poor fit to the electron density. The numeric value is given above the bar.

Mol	Chain	Length	Quality of chain
1	A	169	<div> <div>3%</div> <div> <div></div> <div>92%</div> <div>7% ..</div> </div> </div>
1	B	169	<div> <div>2%</div> <div> <div></div> <div>92%</div> <div>7% .</div> </div> </div>

## 2 Entry composition [i](#)

There are 4 unique types of molecules in this entry. The entry contains 6597 atoms, of which 3050 are hydrogens and 0 are deuteriums.

In the tables below, the ZeroOcc column contains the number of atoms modelled with zero occupancy, the AltConf column contains the number of residues with at least one atom in alternate conformation and the Trace column contains the number of residues modelled with at most 2 atoms.

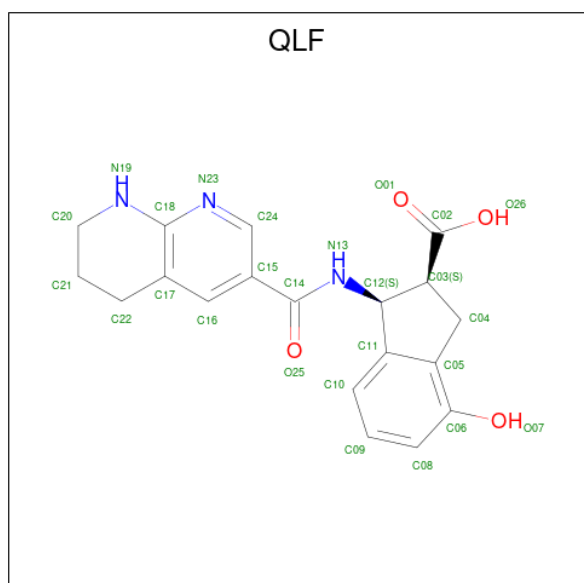
- Molecule 1 is a protein called Non-structural protein 3.

Mol	Chain	Residues	Atoms						ZeroOcc	AltConf	Trace
1	A	167	Total	C	H	N	O	S	0	61	0
			3315	1045	1672	281	313	4			
1	B	169	Total	C	H	N	O	S	0	7	0
			2655	834	1342	226	247	6			

There are 4 discrepancies between the modelled and reference sequences:

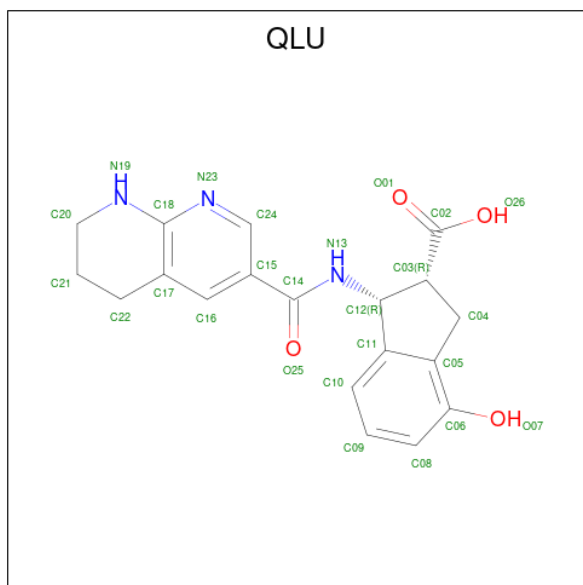
Chain	Residue	Modelled	Actual	Comment	Reference
A	1	SER	-	expression tag	UNP P0DTD1
A	2	MET	-	expression tag	UNP P0DTD1
B	1	SER	-	expression tag	UNP P0DTD1
B	2	MET	-	expression tag	UNP P0DTD1

- Molecule 2 is (1S,2S)-4-hydroxy-1-[(5,6,7,8-tetrahydro-1,8-naphthyridine-3-carbonyl)amino]-2,3-dihydro-1H-indene-2-carboxylic acid (three-letter code: QLF) (formula: C<sub>19</sub>H<sub>19</sub>N<sub>3</sub>O<sub>4</sub>) (labeled as "Ligand of Interest" by depositor).



Mol	Chain	Residues	Atoms					ZeroOcc	AltConf
2	A	1	Total	C	H	N	O	0	1
			44	19	18	3	4		

- Molecule 3 is (1R,2R)-4-hydroxy-1-[(5,6,7,8-tetrahydro-1,8-naphthyridine-3-carbonyl)amino]-2,3-dihydro-1H-indene-2-carboxylic acid (three-letter code: QLU) (formula: C<sub>19</sub>H<sub>19</sub>N<sub>3</sub>O<sub>4</sub>) (labeled as "Ligand of Interest" by depositor).



Mol	Chain	Residues	Atoms					ZeroOcc	AltConf
3	A	1	Total	C	H	N	O	0	1
			44	19	18	3	4		

- Molecule 4 is water.

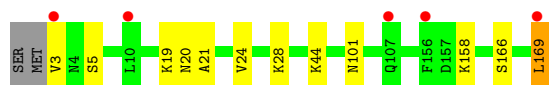
Mol	Chain	Residues	Atoms		ZeroOcc	AltConf
4	A	290	Total	O	0	56
			290	290		
4	B	249	Total	O	0	0
			249	249		

### 3 Residue-property plots [i](#)

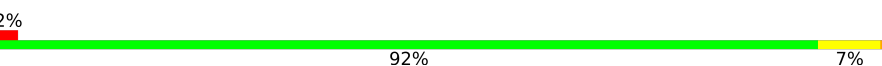
These plots are drawn for all protein, RNA, DNA and oligosaccharide chains in the entry. The first graphic for a chain summarises the proportions of the various outlier classes displayed in the second graphic. The second graphic shows the sequence view annotated by issues in geometry and electron density. Residues are color-coded according to the number of geometric quality criteria for which they contain at least one outlier: green = 0, yellow = 1, orange = 2 and red = 3 or more. A red dot above a residue indicates a poor fit to the electron density ( $RSRZ > 2$ ). Stretches of 2 or more consecutive residues without any outlier are shown as a green connector. Residues present in the sample, but not in the model, are shown in grey.

- Molecule 1: Non-structural protein 3

Chain A: 



- Molecule 1: Non-structural protein 3

Chain B: 



## 4 Data and refinement statistics

Property	Value	Source
Space group	P 43	Depositor
Cell constants a, b, c, $\alpha$ , $\beta$ , $\gamma$	88.87Å 88.87Å 39.56Å 90.00° 90.00° 90.00°	Depositor
Resolution (Å)	44.44 – 1.05 44.44 – 1.05	Depositor EDS
% Data completeness (in resolution range)	99.7 (44.44-1.05) 99.7 (44.44-1.05)	Depositor EDS
$R_{merge}$	0.05	Depositor
$R_{sym}$	(Not available)	Depositor
$\langle I/\sigma(I) \rangle$ <sup>1</sup>	1.66 (at 1.05Å)	Xtriage
Refinement program	PHENIX 1.20.1_4487	Depositor
R, $R_{free}$	0.135 , 0.153 0.133 , 0.152	Depositor DCC
$R_{free}$ test set	6898 reflections (4.83%)	wwPDB-VP
Wilson B-factor (Å <sup>2</sup> )	11.1	Xtriage
Anisotropy	0.732	Xtriage
Bulk solvent $k_{sol}$ (e/Å <sup>3</sup> ), $B_{sol}$ (Å <sup>2</sup> )	0.41 , 52.7	EDS
L-test for twinning <sup>2</sup>	$\langle  L  \rangle = 0.49$ , $\langle L^2 \rangle = 0.32$	Xtriage
Estimated twinning fraction	0.025 for h,-k,-l	Xtriage
$F_o, F_c$ correlation	0.98	EDS
Total number of atoms	6597	wwPDB-VP
Average B, all atoms (Å <sup>2</sup> )	18.0	wwPDB-VP

Xtriage's analysis on translational NCS is as follows: *The largest off-origin peak in the Patterson function is 6.68% of the height of the origin peak. No significant pseudotranslation is detected.*

<sup>1</sup>Intensities estimated from amplitudes.

<sup>2</sup>Theoretical values of  $\langle |L| \rangle$ ,  $\langle L^2 \rangle$  for acentric reflections are 0.5, 0.333 respectively for untwinned datasets, and 0.375, 0.2 for perfectly twinned datasets.

## 5 Model quality [i](#)

### 5.1 Standard geometry [i](#)

Bond lengths and bond angles in the following residue types are not validated in this section: QLU, QLF

The Z score for a bond length (or angle) is the number of standard deviations the observed value is removed from the expected value. A bond length (or angle) with  $|Z| > 5$  is considered an outlier worth inspection. RMSZ is the root-mean-square of all Z scores of the bond lengths (or angles).

Mol	Chain	Bond lengths		Bond angles	
		RMSZ	$\# Z  > 5$	RMSZ	$\# Z  > 5$
1	A	0.35	0/1746	0.61	0/2369
1	B	0.33	0/1357	0.64	0/1839
All	All	0.34	0/3103	0.62	0/4208

There are no bond length outliers.

There are no bond angle outliers.

There are no chirality outliers.

There are no planarity outliers.

### 5.2 Too-close contacts [i](#)

In the following table, the Non-H and H(model) columns list the number of non-hydrogen atoms and hydrogen atoms in the chain respectively. The H(added) column lists the number of hydrogen atoms added and optimized by MolProbity. The Clashes column lists the number of clashes within the asymmetric unit, whereas Symm-Clashes lists symmetry-related clashes.

Mol	Chain	Non-H	H(model)	H(added)	Clashes	Symm-Clashes
1	A	1643	1672	1594	11	1
1	B	1313	1342	1310	10	0
2	A	26	18	0	0	0
3	A	26	18	0	0	0
4	A	290	0	0	6	0
4	B	249	0	0	6	0
All	All	3547	3050	2904	21	1

The all-atom clashscore is defined as the number of clashes found per 1000 atoms (including hydrogen atoms). The all-atom clashscore for this structure is 4.

All (21) close contacts within the same asymmetric unit are listed below, sorted by their clash

magnitude.

Atom-1	Atom-2	Interatomic distance (Å)	Clash overlap (Å)
1:A:3[A]:VAL:N	4:A:301:HOH:O	1.94	0.99
1:A:3[B]:VAL:N	4:A:301:HOH:O	1.96	0.96
1:B:44:LYS:NZ	4:B:202:HOH:O	1.95	0.90
1:B:169:LEU:O	4:B:201:HOH:O	1.91	0.89
1:A:20[B]:ASN:OD1	1:A:158[B]:LYS:HD3	1.80	0.81
1:A:19[B]:LYS:HD3	1:A:21[B]:ALA:HB2	1.71	0.71
1:A:44[B]:LYS:HD2	4:A:479:HOH:O	1.92	0.69
1:A:169:LEU:HB2	4:A:334:HOH:O	1.99	0.62
1:B:11[B]:LYS:NZ	1:B:14:ASP:HA	2.16	0.60
1:B:29[A]:LYS:HD2	4:B:215:HOH:O	2.08	0.54
1:A:44[A]:LYS:HD2	4:A:479:HOH:O	2.09	0.53
1:B:11[A]:LYS:NZ	1:B:14:ASP:HA	2.24	0.52
1:A:20[B]:ASN:CG	1:A:158[B]:LYS:HD3	2.30	0.52
1:A:44[B]:LYS:CD	4:A:479:HOH:O	2.57	0.47
1:B:25:GLU:HG3	4:B:402:HOH:O	2.15	0.45
1:B:29[B]:LYS:HD2	4:B:215:HOH:O	2.15	0.45
1:B:42:TYR:OH	4:B:203:HOH:O	2.11	0.45
1:A:24[B]:VAL:HG12	1:A:28:LYS:HE2	1.99	0.44
1:B:9:TYR:HB3	1:B:17:TYR:HB3	2.01	0.43
1:B:21:ALA:HB1	1:B:26:GLU:HG2	2.02	0.41
1:A:44[A]:LYS:HB3	1:A:44[A]:LYS:HE3	1.95	0.41

All (1) symmetry-related close contacts are listed below. The label for Atom-2 includes the symmetry operator and encoded unit-cell translations to be applied.

Atom-1	Atom-2	Interatomic distance (Å)	Clash overlap (Å)
1:A:101[B]:ASN:HD21	1:A:166:SER:O[3_454]	1.59	0.01

## 5.3 Torsion angles ⓘ

### 5.3.1 Protein backbone ⓘ

In the following table, the Percentiles column shows the percent Ramachandran outliers of the chain as a percentile score with respect to all X-ray entries followed by that with respect to entries of similar resolution.

The Analysed column shows the number of residues for which the backbone conformation was analysed, and the total number of residues.

Mol	Chain	Analysed	Favoured	Allowed	Outliers	Percentiles	
1	A	225/169 (133%)	224 (100%)	1 (0%)	0	100	100
1	B	174/169 (103%)	173 (99%)	1 (1%)	0	100	100
All	All	399/338 (118%)	397 (100%)	2 (0%)	0	100	100

There are no Ramachandran outliers to report.

### 5.3.2 Protein sidechains [i](#)

In the following table, the Percentiles column shows the percent sidechain outliers of the chain as a percentile score with respect to all X-ray entries followed by that with respect to entries of similar resolution.

The Analysed column shows the number of residues for which the sidechain conformation was analysed, and the total number of residues.

Mol	Chain	Analysed	Rotameric	Outliers	Percentiles	
1	A	185/141 (131%)	183 (99%)	2 (1%)	73	40
1	B	148/141 (105%)	145 (98%)	3 (2%)	55	17
All	All	333/282 (118%)	328 (98%)	5 (2%)	59	26

All (5) residues with a non-rotameric sidechain are listed below:

Mol	Chain	Res	Type
1	A	5	SER
1	A	169	LEU
1	B	1	SER
1	B	107	GLN
1	B	169	LEU

Sometimes sidechains can be flipped to improve hydrogen bonding and reduce clashes. All (3) such sidechains are listed below:

Mol	Chain	Res	Type
1	A	150	ASN
1	B	15	ASN
1	B	107	GLN

### 5.3.3 RNA [i](#)

There are no RNA molecules in this entry.

## 5.4 Non-standard residues in protein, DNA, RNA chains [i](#)

There are no non-standard protein/DNA/RNA residues in this entry.

## 5.5 Carbohydrates [i](#)

There are no monosaccharides in this entry.

## 5.6 Ligand geometry [i](#)

2 ligands are modelled in this entry.

In the following table, the Counts columns list the number of bonds (or angles) for which Mogul statistics could be retrieved, the number of bonds (or angles) that are observed in the model and the number of bonds (or angles) that are defined in the Chemical Component Dictionary. The Link column lists molecule types, if any, to which the group is linked. The Z score for a bond length (or angle) is the number of standard deviations the observed value is removed from the expected value. A bond length (or angle) with  $|Z| > 2$  is considered an outlier worth inspection. RMSZ is the root-mean-square of all Z scores of the bond lengths (or angles).

Mol	Type	Chain	Res	Link	Bond lengths			Bond angles		
					Counts	RMSZ	$\# Z  > 2$	Counts	RMSZ	$\# Z  > 2$
3	QLU	A	202[C]	-	28,29,29	1.99	8 (28%)	33,42,42	2.06	12 (36%)
2	QLF	A	201[B]	-	28,29,29	1.92	7 (25%)	33,42,42	1.66	8 (24%)

In the following table, the Chirals column lists the number of chiral outliers, the number of chiral centers analysed, the number of these observed in the model and the number defined in the Chemical Component Dictionary. Similar counts are reported in the Torsion and Rings columns. '-' means no outliers of that kind were identified.

Mol	Type	Chain	Res	Link	Chirals	Torsions	Rings
3	QLU	A	202[C]	-	-	1/12/31/31	0/4/4/4
2	QLF	A	201[B]	-	-	0/12/31/31	0/4/4/4

All (15) bond length outliers are listed below:

Mol	Chain	Res	Type	Atoms	Z	Observed(Å)	Ideal(Å)
3	A	202[C]	QLU	C14-N13	5.98	1.47	1.34
2	A	201[B]	QLF	C14-N13	5.07	1.45	1.34
2	A	201[B]	QLF	C03-C12	-4.64	1.50	1.56
3	A	202[C]	QLU	C11-C12	3.95	1.55	1.51
2	A	201[B]	QLF	C04-C05	3.90	1.55	1.51
3	A	202[C]	QLU	C04-C03	-3.48	1.50	1.54

*Continued on next page...*

*Continued from previous page...*

Mol	Chain	Res	Type	Atoms	Z	Observed(Å)	Ideal(Å)
2	A	201[B]	QLF	C11-C12	2.89	1.54	1.51
3	A	202[C]	QLU	C04-C05	2.89	1.54	1.51
3	A	202[C]	QLU	C03-C12	-2.68	1.53	1.56
2	A	201[B]	QLF	C22-C17	2.34	1.55	1.51
2	A	201[B]	QLF	O25-C14	-2.21	1.18	1.23
3	A	202[C]	QLU	C22-C17	2.16	1.54	1.51
3	A	202[C]	QLU	O25-C14	-2.14	1.18	1.23
2	A	201[B]	QLF	C04-C03	-2.06	1.51	1.54
3	A	202[C]	QLU	O07-C06	2.05	1.40	1.36

All (20) bond angle outliers are listed below:

Mol	Chain	Res	Type	Atoms	Z	Observed(°)	Ideal(°)
3	A	202[C]	QLU	C12-N13-C14	-5.82	112.95	122.28
3	A	202[C]	QLU	C15-C14-N13	3.99	124.71	117.06
3	A	202[C]	QLU	C05-C04-C03	3.83	107.43	103.46
2	A	201[B]	QLF	C05-C11-C12	-3.52	107.28	110.21
2	A	201[B]	QLF	C10-C11-C12	3.39	133.50	128.99
2	A	201[B]	QLF	C24-N23-C18	3.31	122.69	116.05
3	A	202[C]	QLU	C15-C16-C17	-3.18	116.63	121.47
2	A	201[B]	QLF	C15-C16-C17	-3.01	116.89	121.47
3	A	202[C]	QLU	C16-C17-C18	2.89	120.39	116.87
2	A	201[B]	QLF	C15-C24-N23	-2.84	119.71	123.67
3	A	202[C]	QLU	C24-N23-C18	2.81	121.68	116.05
2	A	201[B]	QLF	C16-C15-C24	2.65	120.68	117.95
3	A	202[C]	QLU	O25-C14-C15	-2.60	116.29	120.94
2	A	201[B]	QLF	C12-N13-C14	-2.55	118.20	122.28
3	A	202[C]	QLU	C11-C12-N13	-2.53	110.56	114.61
2	A	201[B]	QLF	C16-C17-C18	2.39	119.78	116.87
3	A	202[C]	QLU	O26-C02-C03	2.34	120.46	114.03
3	A	202[C]	QLU	C16-C15-C24	2.18	120.19	117.95
3	A	202[C]	QLU	C04-C03-C12	2.14	107.36	103.84
3	A	202[C]	QLU	C15-C24-N23	-2.08	120.77	123.67

There are no chirality outliers.

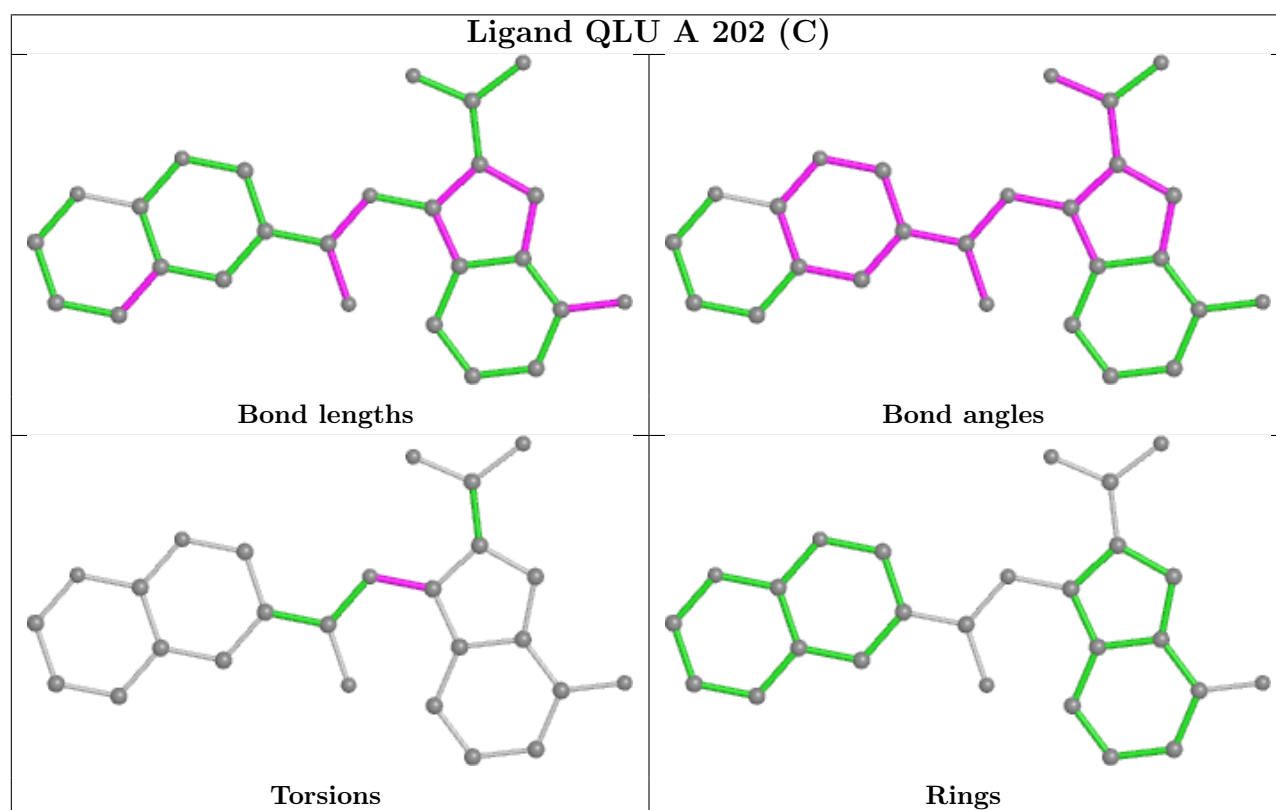
All (1) torsion outliers are listed below:

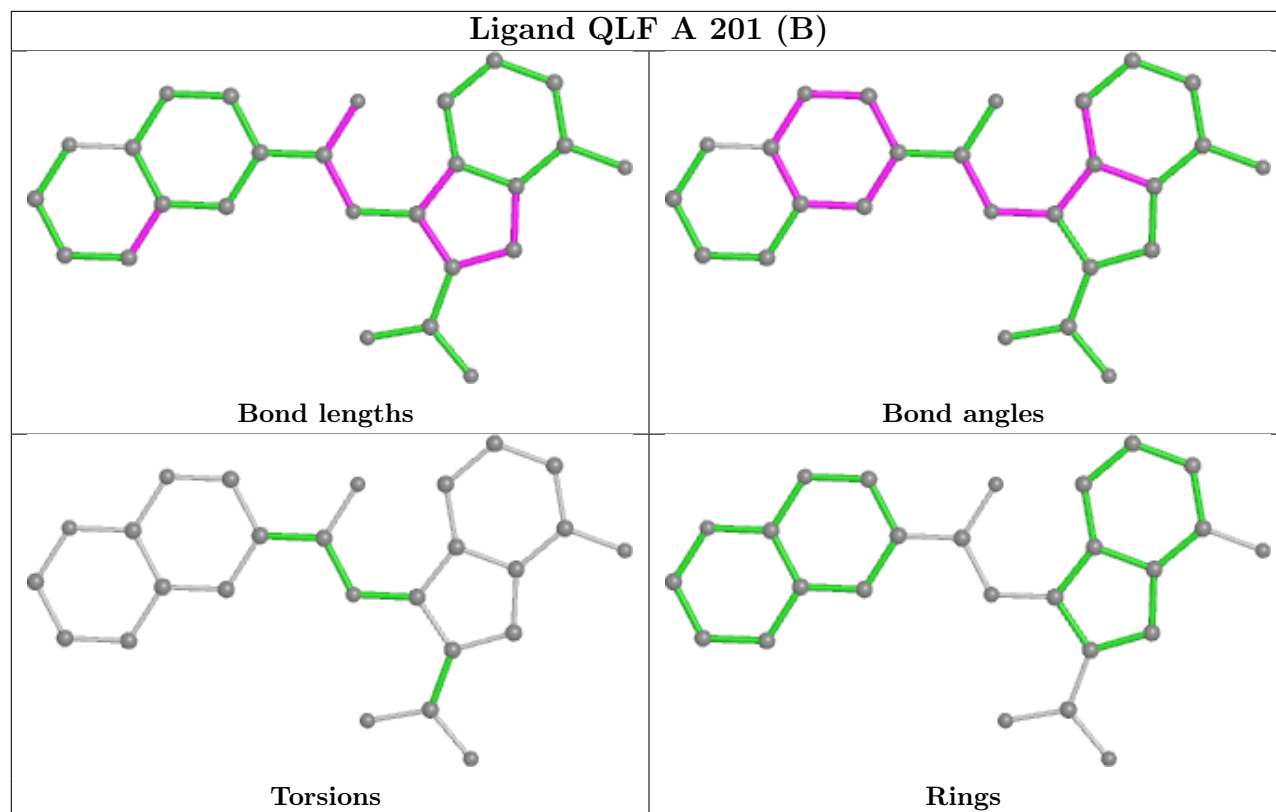
Mol	Chain	Res	Type	Atoms
3	A	202[C]	QLU	C11-C12-N13-C14

There are no ring outliers.

No monomer is involved in short contacts.

The following is a two-dimensional graphical depiction of Mogul quality analysis of bond lengths, bond angles, torsion angles, and ring geometry for all instances of the Ligand of Interest. In addition, ligands with molecular weight > 250 and outliers as shown on the validation Tables will also be included. For torsion angles, if less than 5% of the Mogul distribution of torsion angles is within 10 degrees of the torsion angle in question, then that torsion angle is considered an outlier. Any bond that is central to one or more torsion angles identified as an outlier by Mogul will be highlighted in the graph. For rings, the root-mean-square deviation (RMSD) between the ring in question and similar rings identified by Mogul is calculated over all ring torsion angles. If the average RMSD is greater than 60 degrees and the minimal RMSD between the ring in question and any Mogul-identified rings is also greater than 60 degrees, then that ring is considered an outlier. The outliers are highlighted in purple. The color gray indicates Mogul did not find sufficient equivalents in the CSD to analyse the geometry.





## 5.7 Other polymers [i](#)

There are no such residues in this entry.

## 5.8 Polymer linkage issues [i](#)

There are no chain breaks in this entry.

## 6 Fit of model and data [i](#)

### 6.1 Protein, DNA and RNA chains [i](#)

In the following table, the column labelled ‘#RSRZ > 2’ contains the number (and percentage) of RSRZ outliers, followed by percent RSRZ outliers for the chain as percentile scores relative to all X-ray entries and entries of similar resolution. The OWAB column contains the minimum, median, 95<sup>th</sup> percentile and maximum values of the occupancy-weighted average B-factor per residue. The column labelled ‘Q < 0.9’ lists the number of (and percentage) of residues with an average occupancy less than 0.9.

Mol	Chain	Analysed	<RSRZ>	#RSRZ>2	OWAB(Å <sup>2</sup> )	Q<0.9
1	A	167/169 (98%)	0.13	5 (2%) 50 44	9, 12, 25, 38	0
1	B	169/169 (100%)	0.06	4 (2%) 59 53	9, 14, 25, 35	0
All	All	336/338 (99%)	0.09	9 (2%) 54 49	9, 13, 25, 38	0

All (9) RSRZ outliers are listed below:

Mol	Chain	Res	Type	RSRZ
1	A	169	LEU	4.5
1	A	3[A]	VAL	2.9
1	A	107[A]	GLN	2.9
1	B	103	GLY	2.8
1	A	156[A]	PHE	2.6
1	A	10[A]	LEU	2.6
1	B	2[A]	MET	2.4
1	B	29[A]	LYS	2.3
1	B	169	LEU	2.0

### 6.2 Non-standard residues in protein, DNA, RNA chains [i](#)

There are no non-standard protein/DNA/RNA residues in this entry.

### 6.3 Carbohydrates [i](#)

There are no monosaccharides in this entry.

### 6.4 Ligands [i](#)

In the following table, the Atoms column lists the number of modelled atoms in the group and the number defined in the chemical component dictionary. The B-factors column lists the minimum,

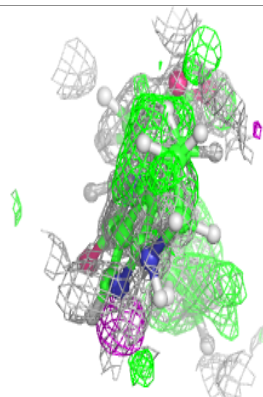
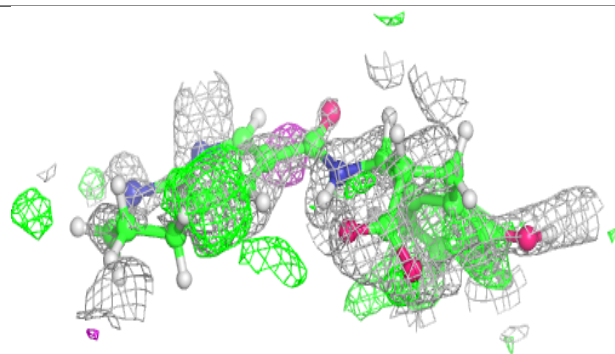
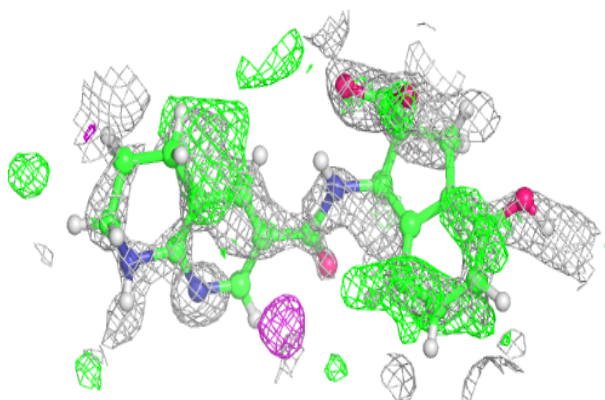
median, 95<sup>th</sup> percentile and maximum values of B factors of atoms in the group. The column labelled 'Q<0.9' lists the number of atoms with occupancy less than 0.9.

Mol	Type	Chain	Res	Atoms	RSCC	RSR	B-factors(Å <sup>2</sup> )	Q<0.9
2	QLF	A	201[B]	26/26	0.78	0.28	10,11,14,14	44
3	QLU	A	202[C]	26/26	0.92	0.23	13,15,19,19	44

The following is a graphical depiction of the model fit to experimental electron density of all instances of the Ligand of Interest. In addition, ligands with molecular weight > 250 and outliers as shown on the geometry validation Tables will also be included. Each fit is shown from different orientation to approximate a three-dimensional view.

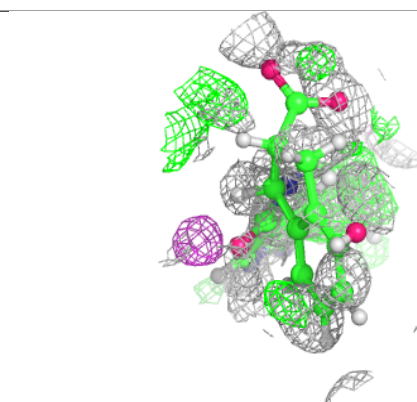
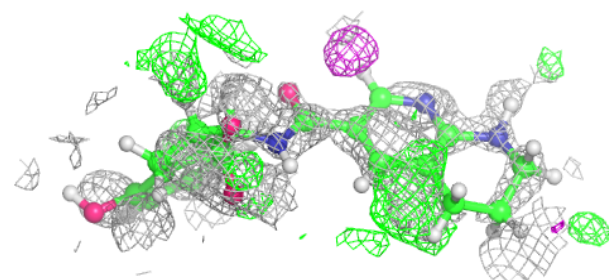
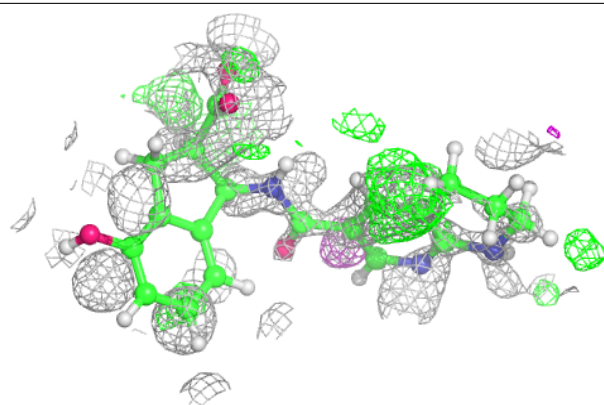
**Electron density around QLF A 201 (B):**

2mF<sub>o</sub>-DF<sub>c</sub> (at 0.7 rmsd) in gray  
mF<sub>o</sub>-DF<sub>c</sub> (at 3 rmsd) in purple (negative)  
and green (positive)



**Electron density around QLU A 202 (C):**

$2mF_o-DF_c$  (at 0.7 rmsd) in gray  
 $mF_o-DF_c$  (at 3 rmsd) in purple (negative)  
and green (positive)



## 6.5 Other polymers [i](#)

There are no such residues in this entry.