



Full wwPDB X-ray Structure Validation Report ⓘ

Nov 1, 2022 – 03:29 PM EDT

PDB ID : 7SPL
Title : [2T3] Self-assembling 3D DNA triangle with three inter-junction base pairs containing the L1 junction and a zero-linked center strand
Authors : Vecchioni, S.; Lu, B.; Sha, R.; Ohayon, Y.P.; Seeman, N.C.
Deposited on : 2021-11-02
Resolution : 6.09 Å(reported)

This is a Full wwPDB X-ray Structure Validation Report for a publicly released PDB entry.

We welcome your comments at validation@mail.wwpdb.org

A user guide is available at

<https://www.wwpdb.org/validation/2017/XrayValidationReportHelp>

with specific help available everywhere you see the ⓘ symbol.

The types of validation reports are described at

<http://www.wwpdb.org/validation/2017/FAQs#types>.

The following versions of software and data (see [references ⓘ](#)) were used in the production of this report:

MolProbity : 4.02b-467
Mogul : 1.8.5 (274361), CSD as541be (2020)
Xtriage (Phenix) : 1.13
EDS : 2.31.2
Percentile statistics : 20191225.v01 (using entries in the PDB archive December 25th 2019)
Refmac : 5.8.0158
CCP4 : 7.0.044 (Gargrove)
Ideal geometry (proteins) : Engh & Huber (2001)
Ideal geometry (DNA, RNA) : Parkinson et al. (1996)
Validation Pipeline (wwPDB-VP) : 2.31.2

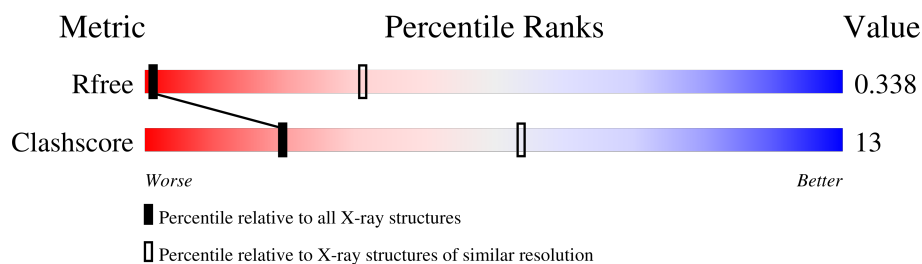
1 Overall quality at a glance

The following experimental techniques were used to determine the structure:

X-RAY DIFFRACTION

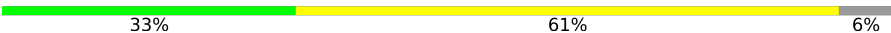
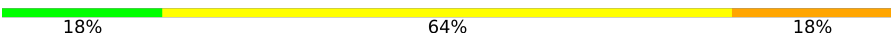
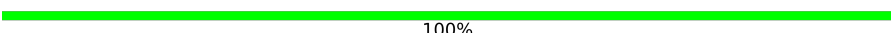

The reported resolution of this entry is 6.09 Å.

Percentile scores (ranging between 0-100) for global validation metrics of the entry are shown in the following graphic. The table shows the number of entries on which the scores are based.



Metric	Whole archive (#Entries)	Similar resolution (#Entries, resolution range(Å))
R_{free}	130704	1002 (8.30-3.88)
Clashscore	141614	1051 (8.30-3.90)

The table below summarises the geometric issues observed across the polymeric chains and their fit to the electron density. The red, orange, yellow and green segments of the lower bar indicate the fraction of residues that contain outliers for ≥ 3 , 2, 1 and 0 types of geometric quality criteria respectively. A grey segment represents the fraction of residues that are not modelled. The numeric value for each fraction is indicated below the corresponding segment, with a dot representing fractions $\leq 5\%$.

Mol	Chain	Length	Quality of chain
1	A	18	 33% 61% 6%
2	B	11	 18% 64% 18%
3	C	10	 100%
4	D	3	 67% 33%

2 Entry composition [i](#)

There are 5 unique types of molecules in this entry. The entry contains 858 atoms, of which 0 are hydrogens and 0 are deuteriums.

In the tables below, the ZeroOcc column contains the number of atoms modelled with zero occupancy, the AltConf column contains the number of residues with at least one atom in alternate conformation and the Trace column contains the number of residues modelled with at most 2 atoms.

- Molecule 1 is a DNA chain called DNA (5'-D(P*GP*AP*GP*CP*AP*GP*CP*CP*TP*GP*TP*GP*AP*CP*AP*TP*CP*A)-3').

Mol	Chain	Residues	Atoms					ZeroOcc	AltConf	Trace
1	A	17	Total	C	N	O	P	0	0	0
			349	167	61	104	17			

- Molecule 2 is a DNA chain called DNA (5'-D(*TP*CP*TP*GP*AP*TP*GP*TP*CP*C)-3').

Mol	Chain	Residues	Atoms					ZeroOcc	AltConf	Trace
2	B	11	Total	C	N	O	P	0	0	0
			223	107	37	68	11			

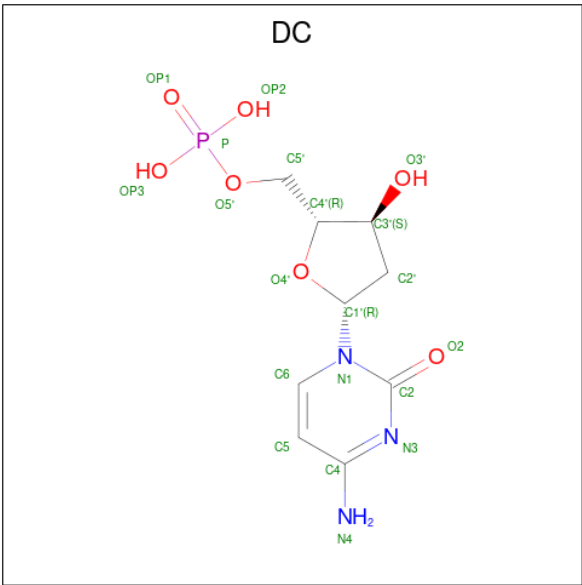
- Molecule 3 is a DNA chain called DNA (5'-D(P*GP*TP*AP*CP*AP*GP*GP*CP*TP*GP*C)-3').

Mol	Chain	Residues	Atoms					ZeroOcc	AltConf	Trace
3	C	10	Total	C	N	O	P	0	0	0
			211	99	45	57	10			

- Molecule 4 is a DNA chain called DNA (5'-D(*GP*AP*C)-3').

Mol	Chain	Residues	Atoms					ZeroOcc	AltConf	Trace
4	D	3	Total	C	N	O	P	0	0	0
			56	28	11	15	2			

- Molecule 5 is 2'-DEOXYCYTIDINE-5'-MONOPHOSPHATE (three-letter code: DC) (formula: C₉H₁₄N₃O₇P).



Mol	Chain	Residues	Atoms					ZeroOcc	AltConf
5	A	1	Total	C	N	O	P	0	0
			19	9	3	6	1		

3 Residue-property plots [i](#)

These plots are drawn for all protein, RNA, DNA and oligosaccharide chains in the entry. The first graphic for a chain summarises the proportions of the various outlier classes displayed in the second graphic. The second graphic shows the sequence view annotated by issues in geometry. Residues are color-coded according to the number of geometric quality criteria for which they contain at least one outlier: green = 0, yellow = 1, orange = 2 and red = 3 or more. Stretches of 2 or more consecutive residues without any outlier are shown as a green connector. Residues present in the sample, but not in the model, are shown in grey.

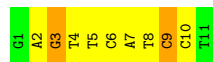
- Molecule 1: DNA (5'-D(P*GP*AP*GP*CP*AP*GP*CP*CP*TP*GP*TP*GP*AP*CP*AP*TP*CP*A)-3')

Chain A: 



- Molecule 2: DNA (5'-D(*TP*CP*TP*GP*AP*TP*GP*TP*CP*C)-3')

Chain B: 



- Molecule 3: DNA (5'-D(P*GP*TP*AP*CP*AP*GP*GP*CP*TP*GP*C)-3')

Chain C: 

There are no outlier residues recorded for this chain.

- Molecule 4: DNA (5'-D(*GP*AP*C)-3')

Chain D: 



4 Data and refinement statistics

Property	Value	Source
Space group	H 3	Depositor
Cell constants a, b, c, α , β , γ	87.84Å 87.84Å 140.53Å 90.00° 90.00° 120.00°	Depositor
Resolution (Å)	36.72 – 6.09 66.90 – 6.03	Depositor EDS
% Data completeness (in resolution range)	61.1 (36.72-6.09) 61.7 (66.90-6.03)	Depositor EDS
R_{merge}	(Not available)	Depositor
R_{sym}	(Not available)	Depositor
$\langle I/\sigma(I) \rangle$ ¹	0.20 (at 6.18Å)	Xtriage
Refinement program	PHENIX 1.18.2_3874	Depositor
R, R_{free}	0.234 , 0.335 0.231 , 0.338	Depositor DCC
R_{free} test set	30 reflections (3.92%)	wwPDB-VP
Wilson B-factor (Å ²)	348.9	Xtriage
Anisotropy	0.331	Xtriage
Bulk solvent k_{sol} (e/Å ³), B_{sol} (Å ²)	1.40 , 106.0	EDS
L-test for twinning ²	$\langle L \rangle = 0.50$, $\langle L^2 \rangle = 0.33$	Xtriage
Estimated twinning fraction	0.239 for h,-h-k,-l	Xtriage
F_o, F_c correlation	0.68	EDS
Total number of atoms	858	wwPDB-VP
Average B, all atoms (Å ²)	847.0	wwPDB-VP

Xtriage's analysis on translational NCS is as follows: *The largest off-origin peak in the Patterson function is 13.00% of the height of the origin peak. No significant pseudotranslation is detected.*

¹Intensities estimated from amplitudes.

²Theoretical values of $\langle |L| \rangle$, $\langle L^2 \rangle$ for acentric reflections are 0.5, 0.333 respectively for untwinned datasets, and 0.375, 0.2 for perfectly twinned datasets.

5 Model quality [i](#)

5.1 Standard geometry [i](#)

The Z score for a bond length (or angle) is the number of standard deviations the observed value is removed from the expected value. A bond length (or angle) with $|Z| > 5$ is considered an outlier worth inspection. RMSZ is the root-mean-square of all Z scores of the bond lengths (or angles).

Mol	Chain	Bond lengths		Bond angles	
		RMSZ	$\# Z > 5$	RMSZ	$\# Z > 5$
1	A	0.65	0/390	1.06	0/600
2	B	0.67	0/248	1.40	4/380 (1.1%)
3	C	0.60	0/238	0.84	0/366
4	D	0.69	0/62	1.04	0/93
All	All	0.65	0/938	1.11	4/1439 (0.3%)

There are no bond length outliers.

All (4) bond angle outliers are listed below:

Mol	Chain	Res	Type	Atoms	Z	Observed(°)	Ideal(°)
2	B	9	DC	OP1-P-O3'	-10.87	81.29	105.20
2	B	9	DC	OP2-P-O3'	-9.01	85.38	105.20
2	B	10	DC	OP1-P-OP2	7.07	130.20	119.60
2	B	3	DG	O4'-C1'-N9	5.89	112.13	108.00

There are no chirality outliers.

There are no planarity outliers.

5.2 Too-close contacts [i](#)

In the following table, the Non-H and H(model) columns list the number of non-hydrogen atoms and hydrogen atoms in the chain respectively. The H(added) column lists the number of hydrogen atoms added and optimized by MolProbity. The Clashes column lists the number of clashes within the asymmetric unit, whereas Symm-Clashes lists symmetry-related clashes.

Mol	Chain	Non-H	H(model)	H(added)	Clashes	Symm-Clashes
1	A	349	0	194	8	0
2	B	223	0	126	9	0
3	C	211	0	112	0	0
4	D	56	0	35	1	0
5	A	19	0	12	2	0

Continued on next page...

Continued from previous page...

Mol	Chain	Non-H	H(model)	H(added)	Clashes	Symm-Clashes
All	All	858	0	479	17	0

The all-atom clashscore is defined as the number of clashes found per 1000 atoms (including hydrogen atoms). The all-atom clashscore for this structure is 13.

All (17) close contacts within the same asymmetric unit are listed below, sorted by their clash magnitude.

Atom-1	Atom-2	Interatomic distance (Å)	Clash overlap (Å)
1:A:8:DT:H2'	1:A:9:DG:C8	2.19	0.77
1:A:4:DC:H2''	1:A:5:DT:C6	2.28	0.68
1:A:2:DC:H2''	1:A:3:DT:H5''	1.80	0.64
1:A:17:DA:H2''	5:A:101:DC:H5	1.63	0.63
2:B:3:DG:H2''	2:B:4:DT:H72	1.85	0.58
2:B:2:DA:H2''	2:B:3:DG:H8	1.72	0.55
2:B:8:DT:H2''	2:B:9:DC:H5''	1.89	0.54
2:B:2:DA:H2''	2:B:3:DG:C8	2.45	0.52
2:B:3:DG:H1'	2:B:4:DT:OP2	2.11	0.51
1:A:15:DG:H2''	1:A:16:DA:O5'	2.12	0.48
1:A:7:DC:H2'	1:A:8:DT:C1'	2.45	0.46
1:A:11:DG:O6	4:D:1:DA:N6	2.49	0.45
1:A:17:DA:H2''	5:A:101:DC:C5	2.47	0.44
2:B:5:DT:H2''	2:B:6:DC:H5''	1.99	0.43
2:B:6:DC:H2'	2:B:7:DA:C8	2.55	0.41
2:B:3:DG:C2'	2:B:4:DT:H72	2.49	0.41
2:B:4:DT:H2''	2:B:5:DT:OP1	2.21	0.41

There are no symmetry-related clashes.

5.3 Torsion angles [i](#)

5.3.1 Protein backbone [i](#)

There are no protein molecules in this entry.

5.3.2 Protein sidechains [i](#)

There are no protein molecules in this entry.

5.3.3 RNA ⓘ

There are no RNA molecules in this entry.

5.4 Non-standard residues in protein, DNA, RNA chains ⓘ

There are no non-standard protein/DNA/RNA residues in this entry.

5.5 Carbohydrates ⓘ

There are no monosaccharides in this entry.

5.6 Ligand geometry ⓘ

1 ligand is modelled in this entry.

In the following table, the Counts columns list the number of bonds (or angles) for which Mogul statistics could be retrieved, the number of bonds (or angles) that are observed in the model and the number of bonds (or angles) that are defined in the Chemical Component Dictionary. The Link column lists molecule types, if any, to which the group is linked. The Z score for a bond length (or angle) is the number of standard deviations the observed value is removed from the expected value. A bond length (or angle) with $|Z| > 2$ is considered an outlier worth inspection. RMSZ is the root-mean-square of all Z scores of the bond lengths (or angles).

Mol	Type	Chain	Res	Link	Bond lengths			Bond angles		
					Counts	RMSZ	$\# Z > 2$	Counts	RMSZ	$\# Z > 2$
5	DC	A	101	-	17,20,21	0.33	0	24,28,31	0.42	0

In the following table, the Chirals column lists the number of chiral outliers, the number of chiral centers analysed, the number of these observed in the model and the number defined in the Chemical Component Dictionary. Similar counts are reported in the Torsion and Rings columns. '-' means no outliers of that kind were identified.

Mol	Type	Chain	Res	Link	Chirals	Torsions	Rings
5	DC	A	101	-	-	0/7/21/22	0/2/2/2

There are no bond length outliers.

There are no bond angle outliers.

There are no chirality outliers.

There are no torsion outliers.

There are no ring outliers.

1 monomer is involved in 2 short contacts:

Mol	Chain	Res	Type	Clashes	Symm-Clashes
5	A	101	DC	2	0

5.7 Other polymers [i](#)

There are no such residues in this entry.

5.8 Polymer linkage issues [i](#)

There are no chain breaks in this entry.

6 Fit of model and data

6.1 Protein, DNA and RNA chains

Unable to reproduce the depositors R factor - this section is therefore empty.

6.2 Non-standard residues in protein, DNA, RNA chains

Unable to reproduce the depositors R factor - this section is therefore empty.

6.3 Carbohydrates

Unable to reproduce the depositors R factor - this section is therefore empty.

6.4 Ligands

Unable to reproduce the depositors R factor - this section is therefore empty.

6.5 Other polymers

Unable to reproduce the depositors R factor - this section is therefore empty.