



Full wwPDB X-ray Structure Validation Report ⓘ

May 25, 2022 – 10:04 AM EDT

PDB ID : 7STQ
Title : Crystal structure of arabidopsis thaliana acetohydroxyacid synthase W574L mutant in complex with chlorimuron-ethyl
Authors : Guddat, L.W.; Cheng, Y.
Deposited on : 2021-11-15
Resolution : 3.30 Å(reported)

This is a Full wwPDB X-ray Structure Validation Report for a publicly released PDB entry.

We welcome your comments at validation@mail.wwpdb.org

A user guide is available at

<https://www.wwpdb.org/validation/2017/XrayValidationReportHelp>

with specific help available everywhere you see the ⓘ symbol.

The following versions of software and data (see [references ⓘ](#)) were used in the production of this report:

MolProbity : 4.02b-467
Mogul : 1.8.5 (274361), CSD as541be (2020)
Xtriage (Phenix) : 1.13
EDS : 2.28.1
buster-report : 1.1.7 (2018)
Percentile statistics : 20191225.v01 (using entries in the PDB archive December 25th 2019)
Refmac : 5.8.0158
CCP4 : 7.0.044 (Gargrove)
Ideal geometry (proteins) : Engh & Huber (2001)
Ideal geometry (DNA, RNA) : Parkinson et al. (1996)
Validation Pipeline (wwPDB-VP) : 2.28.1

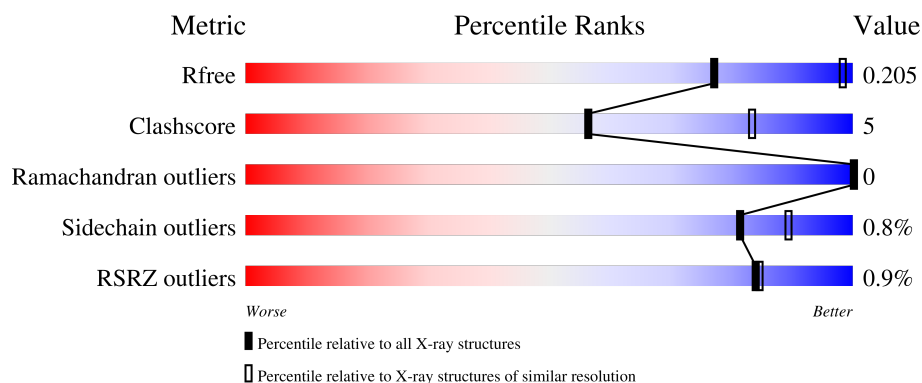
1 Overall quality at a glance

The following experimental techniques were used to determine the structure:

X-RAY DIFFRACTION

The reported resolution of this entry is 3.30 Å.

Percentile scores (ranging between 0-100) for global validation metrics of the entry are shown in the following graphic. The table shows the number of entries on which the scores are based.



Metric	Whole archive (#Entries)	Similar resolution (#Entries, resolution range(Å))
R_{free}	130704	1149 (3.34-3.26)
Clashscore	141614	1205 (3.34-3.26)
Ramachandran outliers	138981	1183 (3.34-3.26)
Sidechain outliers	138945	1182 (3.34-3.26)
RSRZ outliers	127900	1115 (3.34-3.26)

The table below summarises the geometric issues observed across the polymeric chains and their fit to the electron density. The red, orange, yellow and green segments of the lower bar indicate the fraction of residues that contain outliers for ≥ 3 , 2, 1 and 0 types of geometric quality criteria respectively. A grey segment represents the fraction of residues that are not modelled. The numeric value for each fraction is indicated below the corresponding segment, with a dot representing fractions $\leq 5\%$. The upper red bar (where present) indicates the fraction of residues that have poor fit to the electron density. The numeric value is given above the bar.

Mol	Chain	Length	Quality of chain
1	A	590	

The following table lists non-polymeric compounds, carbohydrate monomers and non-standard residues in protein, DNA, RNA chains that are outliers for geometric or electron-density-fit criteria:

Mol	Type	Chain	Res	Chirality	Geometry	Clashes	Electron density
4	CIE	A	703	-	X	-	-

Continued on next page...

Continued from previous page...

Mol	Type	Chain	Res	Chirality	Geometry	Clashes	Electron density
6	NHE	A	706	-	X	-	-

2 Entry composition

There are 7 unique types of molecules in this entry. The entry contains 4575 atoms, of which 0 are hydrogens and 0 are deuteriums.

In the tables below, the ZeroOcc column contains the number of atoms modelled with zero occupancy, the AltConf column contains the number of residues with at least one atom in alternate conformation and the Trace column contains the number of residues modelled with at most 2 atoms.

- Molecule 1 is a protein called Acetolactate synthase, chloroplastic.

Mol	Chain	Residues	Atoms					ZeroOcc	AltConf	Trace
1	A	582	Total	C	N	O	S	0	1	0
			4448	2819	767	838	24			

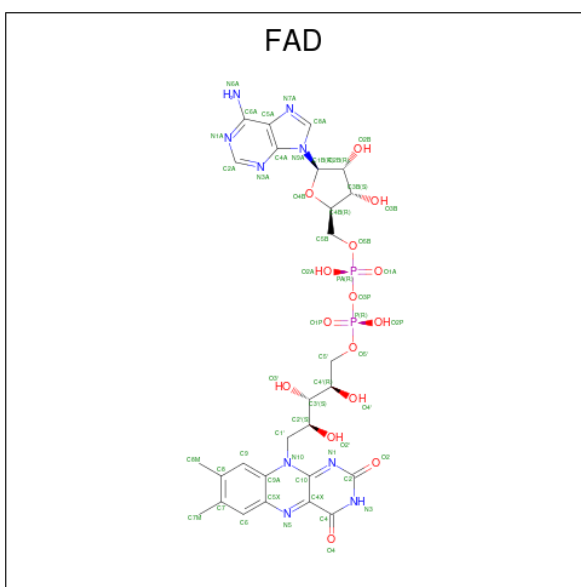
There are 9 discrepancies between the modelled and reference sequences:

Chain	Residue	Modelled	Actual	Comment	Reference
A	574	LEU	TRP	engineered mutation	UNP P17597
A	668	LEU	-	expression tag	UNP P17597
A	669	GLU	-	expression tag	UNP P17597
A	670	HIS	-	expression tag	UNP P17597
A	671	HIS	-	expression tag	UNP P17597
A	672	HIS	-	expression tag	UNP P17597
A	673	HIS	-	expression tag	UNP P17597
A	674	HIS	-	expression tag	UNP P17597
A	675	HIS	-	expression tag	UNP P17597

- Molecule 2 is MAGNESIUM ION (three-letter code: MG) (formula: Mg).

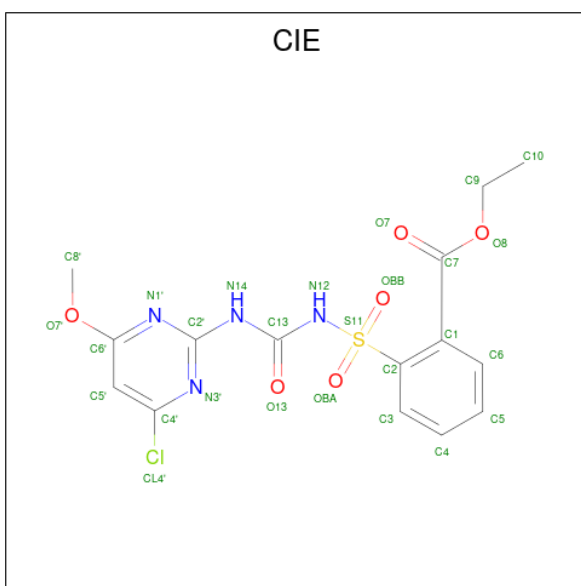
Mol	Chain	Residues	Atoms		ZeroOcc	AltConf
2	A	2	Total	Mg	0	0
			2	2		

- Molecule 3 is FLAVIN-ADENINE DINUCLEOTIDE (three-letter code: FAD) (formula: C₂₇H₃₃N₉O₁₅P₂).



Mol	Chain	Residues	Atoms					ZeroOcc	AltConf
3	A	1	Total	C	N	O	P	0	0
			53	27	9	15	2		

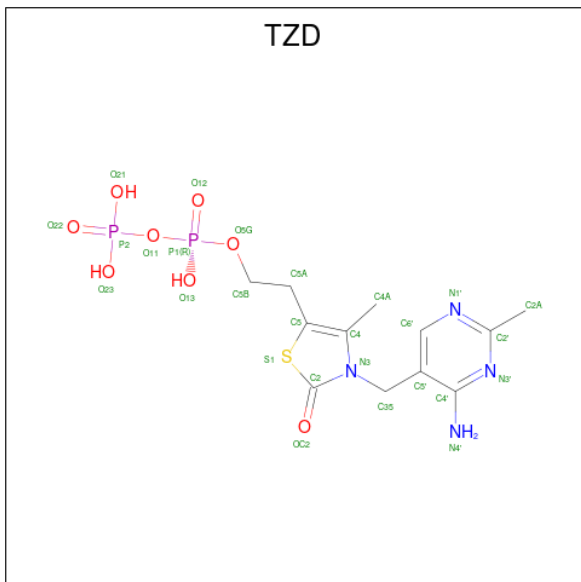
- Molecule 4 is 2-[[[(4-CHLORO-6-METHOXY-2-PYRIMIDINYL)AMINO]CARBONYL]AMINO]SULFONYL]BENZOIC ACID ETHYL ESTER (three-letter code: CIE) (formula: C₁₅H₁₅ClN₄O₆S).



Mol	Chain	Residues	Atoms						ZeroOcc	AltConf
4	A	1	Total	C	Cl	N	O	S	0	0
			27	15	1	4	6	1		

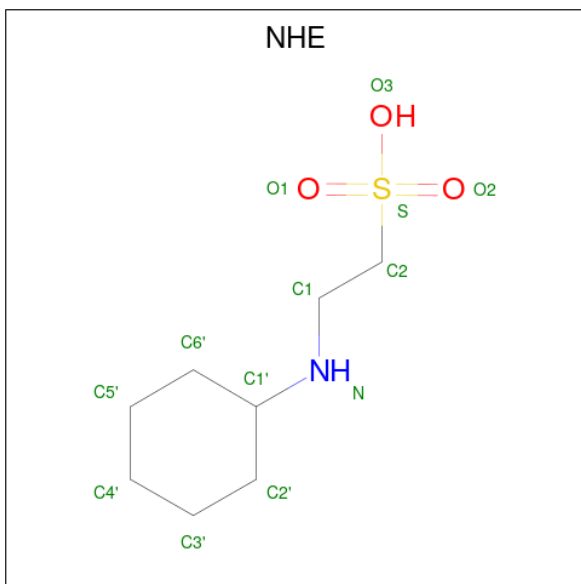
- Molecule 5 is 2-{3-[(4-AMINO-2-METHYLPYRIMIDIN-5-YL)METHYL]-4-METHYL-

2-OXO-2,3-DIHYDRO-1,3-THIAZOL-5-YL}ETHYL TRIHYDROGEN DIPHOSPHATE
(three-letter code: TZD) (formula: C₁₂H₁₈N₄O₈P₂S).



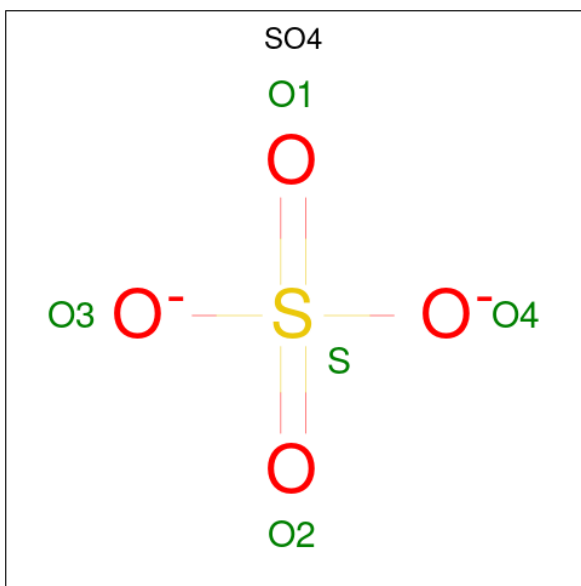
Mol	Chain	Residues	Atoms						ZeroOcc	AltConf
5	A	1	Total	C	N	O	P	S	0	0
			27	12	4	8	2	1		

- Molecule 6 is 2-[N-CYCLOHEXYLAMINO]ETHANE SULFONIC ACID (three-letter code: NHE) (formula: $\text{C}_8\text{H}_{17}\text{NO}_3\text{S}$).



Mol	Chain	Residues	Atoms					ZeroOcc	AltConf
6	A	1	Total	C	N	O	S	0	0
			13	8	1	3	1		

- Molecule 7 is SULFATE ION (three-letter code: SO4) (formula: O₄S).

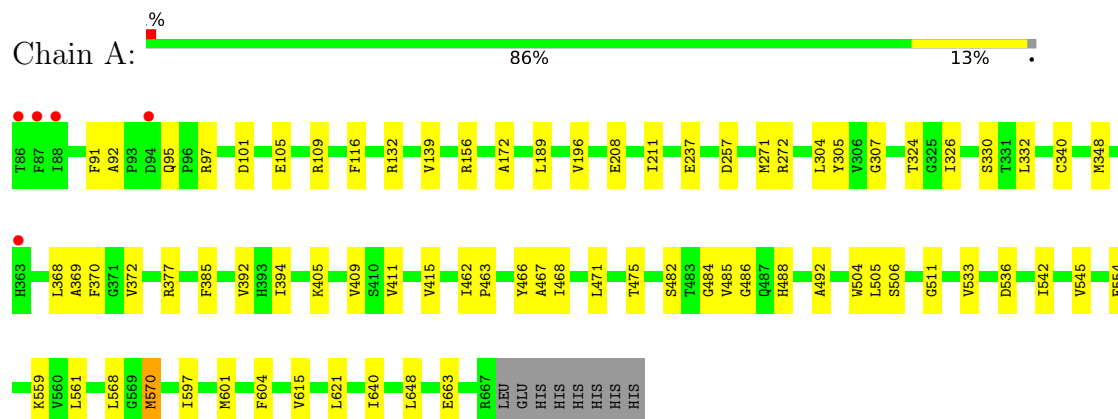


Mol	Chain	Residues	Atoms			ZeroOcc	AltConf
7	A	1	Total	O	S	0	0
			5	4	1		

3 Residue-property plots

These plots are drawn for all protein, RNA, DNA and oligosaccharide chains in the entry. The first graphic for a chain summarises the proportions of the various outlier classes displayed in the second graphic. The second graphic shows the sequence view annotated by issues in geometry and electron density. Residues are color-coded according to the number of geometric quality criteria for which they contain at least one outlier: green = 0, yellow = 1, orange = 2 and red = 3 or more. A red dot above a residue indicates a poor fit to the electron density ($RSRZ > 2$). Stretches of 2 or more consecutive residues without any outlier are shown as a green connector. Residues present in the sample, but not in the model, are shown in grey.

- Molecule 1: Acetolactate synthase, chloroplastic



4 Data and refinement statistics

Property	Value	Source
Space group	P 64 2 2	Depositor
Cell constants a, b, c, α , β , γ	178.13Å 178.13Å 184.76Å 90.00° 90.00° 120.00°	Depositor
Resolution (Å)	48.13 – 3.30 48.13 – 3.30	Depositor EDS
% Data completeness (in resolution range)	99.5 (48.13-3.30) 99.5 (48.13-3.30)	Depositor EDS
R_{merge}	(Not available)	Depositor
R_{sym}	(Not available)	Depositor
$\langle I/\sigma(I) \rangle$ ¹	2.19 (at 3.33Å)	Xtriage
Refinement program	PHENIX 1.17.1_3660	Depositor
R, R_{free}	0.178 , 0.205 0.178 , 0.205	Depositor DCC
R_{free} test set	1998 reflections (7.56%)	wwPDB-VP
Wilson B-factor (Å ²)	89.1	Xtriage
Anisotropy	0.356	Xtriage
Bulk solvent k_{sol} (e/Å ³), B_{sol} (Å ²)	0.34 , 45.5	EDS
L-test for twinning ²	$\langle L \rangle = 0.51$, $\langle L^2 \rangle = 0.34$	Xtriage
Estimated twinning fraction	No twinning to report.	Xtriage
F_o, F_c correlation	0.95	EDS
Total number of atoms	4575	wwPDB-VP
Average B, all atoms (Å ²)	83.0	wwPDB-VP

Xtriage's analysis on translational NCS is as follows: *The largest off-origin peak in the Patterson function is 2.29% of the height of the origin peak. No significant pseudotranslation is detected.*

¹Intensities estimated from amplitudes.

²Theoretical values of $\langle |L| \rangle$, $\langle L^2 \rangle$ for acentric reflections are 0.5, 0.333 respectively for untwinned datasets, and 0.375, 0.2 for perfectly twinned datasets.

5 Model quality [i](#)

5.1 Standard geometry [i](#)

Bond lengths and bond angles in the following residue types are not validated in this section: CSD, MG, FAD, CIE, TZD, NHE, SO4

The Z score for a bond length (or angle) is the number of standard deviations the observed value is removed from the expected value. A bond length (or angle) with $|Z| > 5$ is considered an outlier worth inspection. RMSZ is the root-mean-square of all Z scores of the bond lengths (or angles).

Mol	Chain	Bond lengths		Bond angles	
		RMSZ	$\# Z > 5$	RMSZ	$\# Z > 5$
1	A	0.25	0/4534	0.47	0/6157

There are no bond length outliers.

There are no bond angle outliers.

There are no chirality outliers.

There are no planarity outliers.

5.2 Too-close contacts [i](#)

In the following table, the Non-H and H(model) columns list the number of non-hydrogen atoms and hydrogen atoms in the chain respectively. The H(added) column lists the number of hydrogen atoms added and optimized by MolProbity. The Clashes column lists the number of clashes within the asymmetric unit, whereas Symm-Clashes lists symmetry-related clashes.

Mol	Chain	Non-H	H(model)	H(added)	Clashes	Symm-Clashes
1	A	4448	0	4435	43	0
2	A	2	0	0	0	0
3	A	53	0	31	1	0
4	A	27	0	15	2	0
5	A	27	0	15	2	0
6	A	13	0	16	0	0
7	A	5	0	0	0	0
All	All	4575	0	4512	45	0

The all-atom clashscore is defined as the number of clashes found per 1000 atoms (including hydrogen atoms). The all-atom clashscore for this structure is 5.

All (45) close contacts within the same asymmetric unit are listed below, sorted by their clash magnitude.

Atom-1	Atom-2	Interatomic distance (Å)	Clash overlap (Å)
1:A:394:ILE:HG12	1:A:411:VAL:HB	1.81	0.63
1:A:467:ALA:HA	1:A:621:LEU:HD21	1.84	0.58
1:A:463:PRO:HG2	1:A:466:TYR:HB3	1.86	0.57
1:A:332:LEU:HD13	1:A:348:MET:HE1	1.85	0.56
1:A:196:VAL:HG21	1:A:208:GLU:HG3	1.88	0.54
1:A:533:VAL:HG22	1:A:559:LYS:HB2	1.90	0.52
1:A:304:LEU:HD23	1:A:368:LEU:HB2	1.92	0.52
1:A:332:LEU:HD11	1:A:504:TRP:HZ2	1.74	0.51
1:A:305:TYR:HB3	1:A:369:ALA:HA	1.92	0.51
1:A:615:VAL:HG21	1:A:621:LEU:HA	1.93	0.50
1:A:648:LEU:HD13	1:A:663:GLU:HA	1.93	0.50
1:A:486:GLY:HA2	1:A:570:MET:HG3	1.94	0.49
5:A:704:TZD:C2	5:A:704:TZD:H4'2	2.26	0.49
1:A:370:PHE:HB3	1:A:415:VAL:HG21	1.95	0.49
1:A:92:ALA:HB3	1:A:95:GLN:HB2	1.94	0.48
1:A:257:ASP:OD1	1:A:257:ASP:N	2.47	0.48
1:A:484:GLY:H	1:A:488:HIS:HE1	1.62	0.47
1:A:91:PHE:CG	1:A:97:ARG:HD3	2.50	0.47
1:A:385:PHE:O	1:A:405:LYS:HE2	2.15	0.47
1:A:482:SER:HA	1:A:505:LEU:O	2.15	0.47
1:A:139:VAL:HG13	1:A:554:GLU:HG3	1.97	0.46
1:A:568:LEU:HB3	5:A:704:TZD:H5A1	1.98	0.46
1:A:485:VAL:HG21	1:A:511:GLY:C	2.36	0.46
1:A:392:VAL:HG22	1:A:409:VAL:HB	1.98	0.45
1:A:542:ILE:HA	1:A:545:VAL:HB	1.97	0.45
1:A:377:ARG:HA	1:A:377:ARG:HD3	1.77	0.45
1:A:377:ARG:NH2	4:A:703:CIE:O13	2.50	0.45
1:A:105:GLU:OE2	1:A:109:ARG:NH1	2.50	0.44
1:A:601:MET:HA	1:A:604:PHE:HD2	1.82	0.44
1:A:471:LEU:O	1:A:475:THR:OG1	2.33	0.44
1:A:172:ALA:HB1	1:A:211:ILE:HG12	2.00	0.43
1:A:324:THR:HB	1:A:326:ILE:HG13	2.00	0.43
1:A:330:SER:O	1:A:348:MET:HA	2.18	0.43
1:A:307:GLY:HA3	1:A:372:VAL:HG12	2.01	0.43
1:A:156:ARG:NH1	1:A:506:SER:O	2.52	0.42
1:A:116:PHE:CD1	1:A:139:VAL:HB	2.54	0.42
1:A:462:ILE:HG23	1:A:621:LEU:HD22	2.01	0.42
1:A:463:PRO:HG2	1:A:466:TYR:CB	2.48	0.42
1:A:468:ILE:HD13	1:A:492:ALA:HA	2.02	0.41
1:A:597:ILE:HG12	1:A:640:ILE:HD12	2.03	0.41
1:A:101:ASP:OD2	1:A:132:ARG:NH1	2.54	0.41
3:A:702:FAD:H9	3:A:702:FAD:H1'1	1.75	0.41

Continued on next page...

Continued from previous page...

Atom-1	Atom-2	Interatomic distance (Å)	Clash overlap (Å)
1:A:237:GLU:HG2	1:A:271:MET:HB3	2.02	0.41
1:A:471:LEU:HD22	1:A:561:LEU:HD22	2.03	0.40
1:A:570:MET:HE1	4:A:703:CIE:H5'	2.03	0.40

There are no symmetry-related clashes.

5.3 Torsion angles [i](#)

5.3.1 Protein backbone [i](#)

In the following table, the Percentiles column shows the percent Ramachandran outliers of the chain as a percentile score with respect to all X-ray entries followed by that with respect to entries of similar resolution.

The Analysed column shows the number of residues for which the backbone conformation was analysed, and the total number of residues.

Mol	Chain	Analysed	Favoured	Allowed	Outliers	Percentiles	
1	A	580/590 (98%)	562 (97%)	18 (3%)	0	100	100

There are no Ramachandran outliers to report.

5.3.2 Protein sidechains [i](#)

In the following table, the Percentiles column shows the percent sidechain outliers of the chain as a percentile score with respect to all X-ray entries followed by that with respect to entries of similar resolution.

The Analysed column shows the number of residues for which the sidechain conformation was analysed, and the total number of residues.

Mol	Chain	Analysed	Rotameric	Outliers	Percentiles	
1	A	476/486 (98%)	472 (99%)	4 (1%)	81	89

All (4) residues with a non-rotameric sidechain are listed below:

Mol	Chain	Res	Type
1	A	189	LEU
1	A	272	ARG
1	A	536	ASP

Continued on next page...

Continued from previous page...

Mol	Chain	Res	Type
1	A	570	MET

Sometimes sidechains can be flipped to improve hydrogen bonding and reduce clashes. There are no such sidechains identified.

5.3.3 RNA ⓘ

There are no RNA molecules in this entry.

5.4 Non-standard residues in protein, DNA, RNA chains ⓘ

1 non-standard protein/DNA/RNA residue is modelled in this entry.

In the following table, the Counts columns list the number of bonds (or angles) for which Mogul statistics could be retrieved, the number of bonds (or angles) that are observed in the model and the number of bonds (or angles) that are defined in the Chemical Component Dictionary. The Link column lists molecule types, if any, to which the group is linked. The Z score for a bond length (or angle) is the number of standard deviations the observed value is removed from the expected value. A bond length (or angle) with $|Z| > 2$ is considered an outlier worth inspection. RMSZ is the root-mean-square of all Z scores of the bond lengths (or angles).

Mol	Type	Chain	Res	Link	Bond lengths			Bond angles		
					Counts	RMSZ	# Z > 2	Counts	RMSZ	# Z > 2
1	CSD	A	340	1	3,7,8	1.09	0	1,8,10	7.81	1 (100%)

In the following table, the Chirals column lists the number of chiral outliers, the number of chiral centers analysed, the number of these observed in the model and the number defined in the Chemical Component Dictionary. Similar counts are reported in the Torsion and Rings columns. '-' means no outliers of that kind were identified.

Mol	Type	Chain	Res	Link	Chirals	Torsions	Rings
1	CSD	A	340	1	-	0/2/6/8	-

There are no bond length outliers.

All (1) bond angle outliers are listed below:

Mol	Chain	Res	Type	Atoms	Z	Observed(°)	Ideal(°)
1	A	340	CSD	OD1-SG-CB	7.81	120.40	105.54

There are no chirality outliers.

There are no torsion outliers.

There are no ring outliers.

No monomer is involved in short contacts.

5.5 Carbohydrates [i](#)

There are no monosaccharides in this entry.

5.6 Ligand geometry [i](#)

Of 7 ligands modelled in this entry, 2 are monoatomic - leaving 5 for Mogul analysis.

In the following table, the Counts columns list the number of bonds (or angles) for which Mogul statistics could be retrieved, the number of bonds (or angles) that are observed in the model and the number of bonds (or angles) that are defined in the Chemical Component Dictionary. The Link column lists molecule types, if any, to which the group is linked. The Z score for a bond length (or angle) is the number of standard deviations the observed value is removed from the expected value. A bond length (or angle) with $|Z| > 2$ is considered an outlier worth inspection. RMSZ is the root-mean-square of all Z scores of the bond lengths (or angles).

Mol	Type	Chain	Res	Link	Bond lengths			Bond angles		
					Counts	RMSZ	$\# Z > 2$	Counts	RMSZ	$\# Z > 2$
4	CIE	A	703	-	28,28,28	2.67	10 (35%)	38,39,39	3.19	13 (34%)
5	TZD	A	704	2	23,28,28	3.56	6 (26%)	28,42,42	1.69	8 (28%)
3	FAD	A	702	-	51,58,58	2.33	17 (33%)	60,89,89	1.82	12 (20%)
7	SO4	A	707	-	4,4,4	0.15	0	6,6,6	0.09	0
6	NHE	A	706	-	13,13,13	3.77	6 (46%)	16,17,17	3.44	13 (81%)

In the following table, the Chirals column lists the number of chiral outliers, the number of chiral centers analysed, the number of these observed in the model and the number defined in the Chemical Component Dictionary. Similar counts are reported in the Torsion and Rings columns. '-' means no outliers of that kind were identified.

Mol	Type	Chain	Res	Link	Chirals	Torsions	Rings
6	NHE	A	706	-	-	4/7/15/15	0/1/1/1
4	CIE	A	703	-	-	15/24/24/24	0/2/2/2
3	FAD	A	702	-	-	11/30/50/50	0/6/6/6
5	TZD	A	704	2	-	3/16/17/17	0/2/2/2

All (39) bond length outliers are listed below:

Mol	Chain	Res	Type	Atoms	Z	Observed(Å)	Ideal(Å)
5	A	704	TZD	OC2-C2	11.54	1.40	1.21
5	A	704	TZD	C4-N3	8.47	1.58	1.39
6	A	706	NHE	C2'-C1'	-8.45	1.32	1.52
6	A	706	NHE	C5'-C6'	-8.05	1.32	1.53
3	A	702	FAD	C2B-C1B	8.05	1.66	1.53
4	A	703	CIE	C2'-N14	7.31	1.48	1.38
3	A	702	FAD	O4B-C1B	-6.68	1.31	1.41
3	A	702	FAD	O4-C4	6.57	1.41	1.24
4	A	703	CIE	C2-S11	5.70	1.85	1.77
4	A	703	CIE	S11-N12	5.07	1.75	1.64
6	A	706	NHE	C4'-C3'	-4.93	1.32	1.51
5	A	704	TZD	C5A-C5	4.82	1.53	1.50
5	A	704	TZD	C4'-N4'	4.51	1.45	1.34
4	A	703	CIE	C13-N12	4.47	1.49	1.39
4	A	703	CIE	C13-N14	4.21	1.46	1.37
5	A	704	TZD	C5'-C4'	-3.75	1.36	1.42
3	A	702	FAD	C5B-C4B	-3.66	1.40	1.51
6	A	706	NHE	C2-S	3.32	1.82	1.77
3	A	702	FAD	C6A-N6A	3.28	1.46	1.34
3	A	702	FAD	O3B-C3B	3.24	1.50	1.43
4	A	703	CIE	O8-C7	3.24	1.41	1.33
3	A	702	FAD	O4B-C4B	3.11	1.51	1.45
4	A	703	CIE	O13-C13	-3.08	1.16	1.23
3	A	702	FAD	C3B-C4B	2.89	1.60	1.53
5	A	704	TZD	C5-S1	-2.87	1.68	1.74
3	A	702	FAD	C5'-C4'	2.78	1.55	1.51
4	A	703	CIE	O7'-C6'	2.70	1.39	1.35
3	A	702	FAD	C2-N1	-2.63	1.33	1.38
3	A	702	FAD	C2-N3	-2.41	1.33	1.38
4	A	703	CIE	C4'-CL4'	2.41	1.79	1.74
3	A	702	FAD	P-O5'	2.40	1.69	1.59
4	A	703	CIE	C1-C7	2.40	1.55	1.50
3	A	702	FAD	PA-O5B	2.29	1.68	1.59
3	A	702	FAD	O4'-C4'	-2.24	1.38	1.43
6	A	706	NHE	O1-S	2.19	1.51	1.45
3	A	702	FAD	C9A-C5X	-2.17	1.38	1.42
6	A	706	NHE	O2-S	2.13	1.51	1.45
3	A	702	FAD	O2B-C2B	2.12	1.48	1.43
3	A	702	FAD	C9A-N10	-2.02	1.35	1.38

All (46) bond angle outliers are listed below:

Mol	Chain	Res	Type	Atoms	Z	Observed(°)	Ideal(°)
4	A	703	CIE	OBB-S11-OBA	-9.35	108.06	119.55
4	A	703	CIE	C2'-N14-C13	-8.29	121.56	130.40
4	A	703	CIE	C4'-N3'-C2'	7.64	120.93	114.69
3	A	702	FAD	C2-N3-C4	6.33	120.49	115.14
4	A	703	CIE	C5'-C4'-N3'	-6.01	118.90	125.50
6	A	706	NHE	C6'-C1'-C2'	5.29	120.00	110.82
3	A	702	FAD	N3A-C2A-N1A	-4.90	121.01	128.68
4	A	703	CIE	C2'-N1'-C6'	4.81	120.65	114.99
6	A	706	NHE	C5'-C6'-C1'	4.73	120.01	111.11
6	A	706	NHE	C3'-C2'-C1'	4.73	120.00	111.11
4	A	703	CIE	C2-S11-N12	4.67	111.56	106.06
4	A	703	CIE	C5'-C6'-N1'	-4.46	118.88	124.08
6	A	706	NHE	C4'-C5'-C6'	4.24	120.06	111.42
3	A	702	FAD	O2'-C2'-C3'	4.24	119.40	109.10
6	A	706	NHE	C4'-C3'-C2'	4.22	120.01	111.42
6	A	706	NHE	O3-S-O2	-4.17	101.09	111.27
5	A	704	TZD	C4A-C4-N3	3.96	127.67	122.69
6	A	706	NHE	O2-S-C2	3.87	111.57	106.92
3	A	702	FAD	O2'-C2'-C1'	3.82	118.79	109.59
3	A	702	FAD	C9A-N10-C10	-3.59	117.21	121.91
4	A	703	CIE	O8-C7-C1	3.48	119.08	112.21
6	A	706	NHE	O3-S-C2	3.37	111.22	105.77
5	A	704	TZD	N1'-C2'-N3'	-3.29	119.88	125.54
3	A	702	FAD	C1'-C2'-C3'	3.26	118.91	109.79
4	A	703	CIE	C4'-C5'-C6'	3.17	118.92	114.70
6	A	706	NHE	C1-N-C1'	3.16	120.35	114.14
3	A	702	FAD	C10-C4X-C4	-3.15	117.86	119.95
4	A	703	CIE	N3'-C2'-N1'	-2.86	121.71	126.23
6	A	706	NHE	C5'-C4'-C3'	2.84	119.92	111.18
3	A	702	FAD	C4X-C4-N3	-2.84	119.55	123.43
3	A	702	FAD	C4A-C5A-N7A	-2.84	106.44	109.40
5	A	704	TZD	P1-O11-P2	-2.83	123.13	132.83
6	A	706	NHE	O1-S-C2	2.82	110.31	106.92
3	A	702	FAD	C4-C4X-N5	2.80	121.80	118.60
5	A	704	TZD	C6'-C5'-C4'	2.75	119.47	115.72
5	A	704	TZD	C2A-C2'-N1'	2.73	120.14	117.14
3	A	702	FAD	P-O3P-PA	-2.59	123.94	132.83
4	A	703	CIE	N12-C13-N14	2.57	118.33	114.93
3	A	702	FAD	C5X-C9A-N10	2.55	119.56	117.72
4	A	703	CIE	CL4'-C4'-N3'	2.49	121.19	115.44
5	A	704	TZD	C6'-N1'-C2'	2.49	120.20	115.96
5	A	704	TZD	C5'-C35-N3	-2.25	109.54	113.26
6	A	706	NHE	C2'-C1'-N	2.24	120.15	110.57

Continued on next page...

Continued from previous page...

Mol	Chain	Res	Type	Atoms	Z	Observed(°)	Ideal(°)
6	A	706	NHE	C6'-C1'-N	2.17	119.86	110.57
4	A	703	CIE	O8-C7-O7	-2.16	119.29	123.67
5	A	704	TZD	C5'-C6'-N1'	-2.13	120.26	123.82

There are no chirality outliers.

All (33) torsion outliers are listed below:

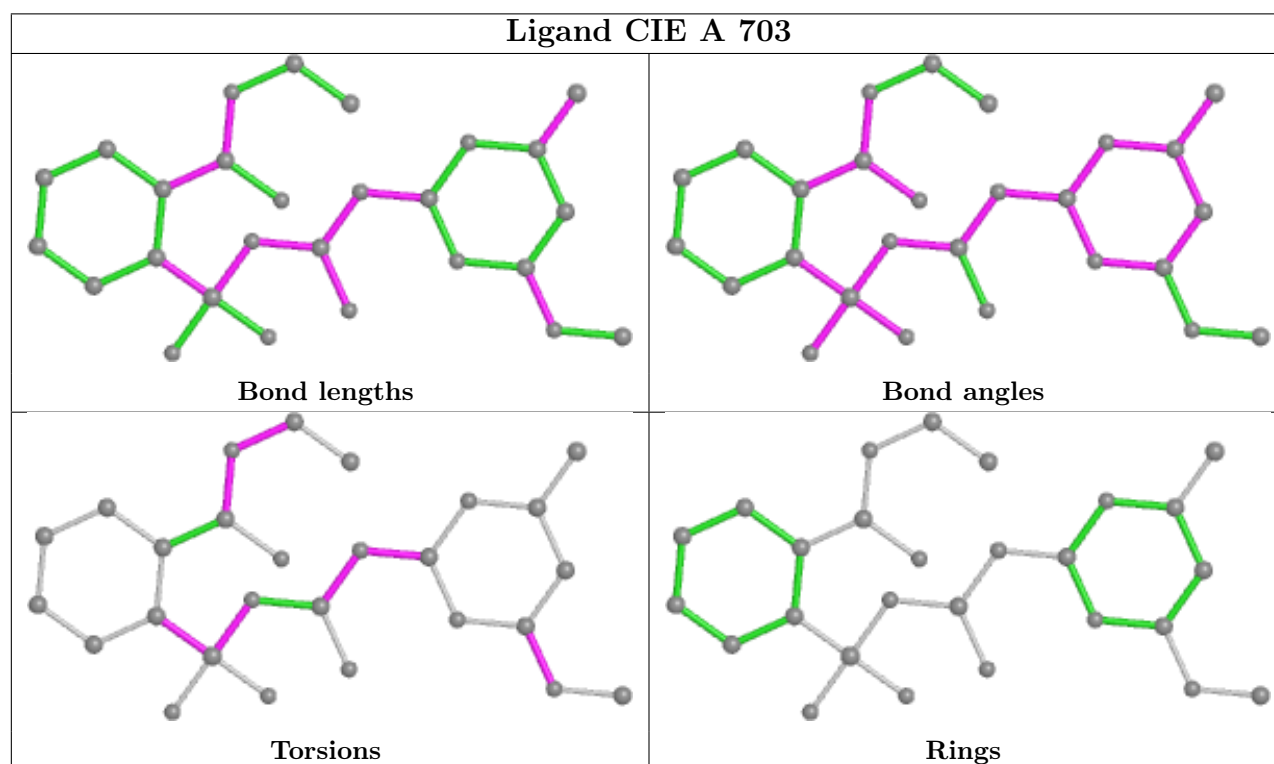
Mol	Chain	Res	Type	Atoms
3	A	702	FAD	N10-C1'-C2'-C3'
3	A	702	FAD	O2'-C2'-C3'-O3'
3	A	702	FAD	O2'-C2'-C3'-C4'
3	A	702	FAD	C3'-C4'-C5'-O5'
3	A	702	FAD	O4'-C4'-C5'-O5'
3	A	702	FAD	C5'-O5'-P-O1P
3	A	702	FAD	C5'-O5'-P-O2P
3	A	702	FAD	C5'-O5'-P-O3P
3	A	702	FAD	PA-O3P-P-O5'
4	A	703	CIE	C13-N12-S11-C2
4	A	703	CIE	C13-N12-S11-OBA
4	A	703	CIE	N12-C13-N14-C2'
4	A	703	CIE	N1'-C2'-N14-C13
4	A	703	CIE	N3'-C2'-N14-C13
5	A	704	TZD	P1-O11-P2-O21
6	A	706	NHE	C2'-C1'-N-C1
6	A	706	NHE	C1-C2-S-O2
6	A	706	NHE	C1-C2-S-O3
4	A	703	CIE	C1-C7-O8-C9
4	A	703	CIE	O7-C7-O8-C9
4	A	703	CIE	N1'-C6'-O7'-C8'
4	A	703	CIE	C5'-C6'-O7'-C8'
4	A	703	CIE	C1-C2-S11-OB
4	A	703	CIE	C1-C2-S11-N12
4	A	703	CIE	C3-C2-S11-OB
6	A	706	NHE	C1-C2-S-O1
4	A	703	CIE	O13-C13-N14-C2'
3	A	702	FAD	P-O3P-PA-O2A
4	A	703	CIE	C13-N12-S11-OB
3	A	702	FAD	O4B-C4B-C5B-O5B
5	A	704	TZD	P1-O11-P2-O23
4	A	703	CIE	C10-C9-O8-C7
5	A	704	TZD	P1-O11-P2-O22

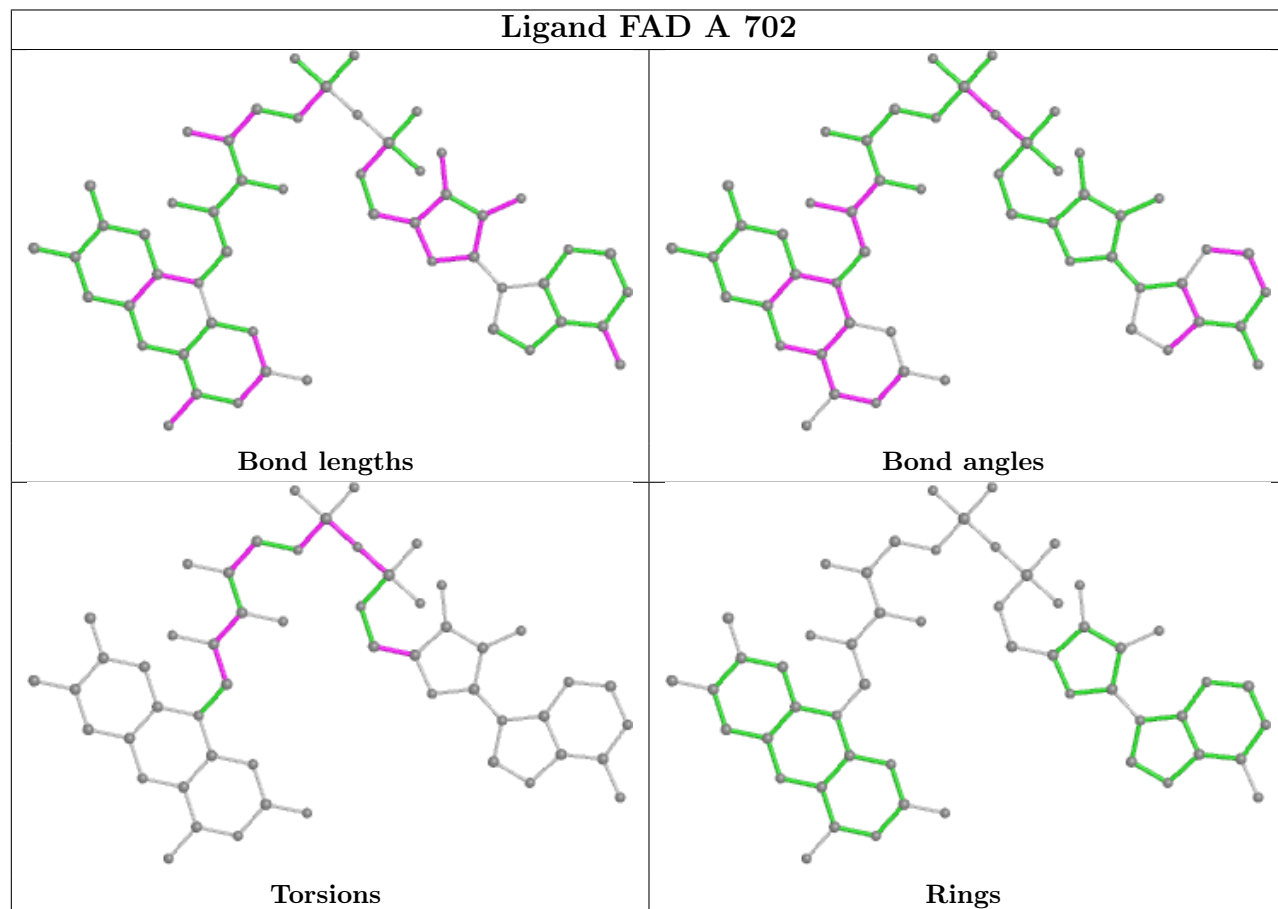
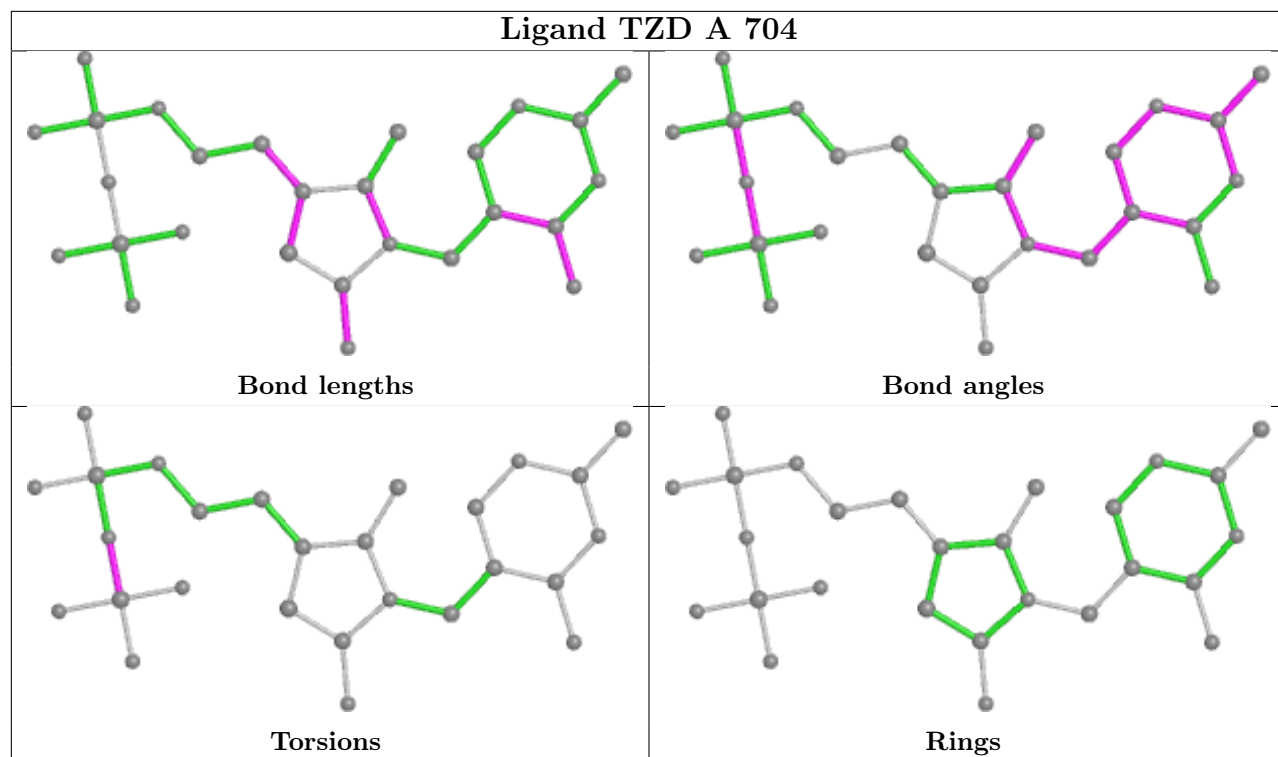
There are no ring outliers.

3 monomers are involved in 5 short contacts:

Mol	Chain	Res	Type	Clashes	Symm-Clashes
4	A	703	CIE	2	0
5	A	704	TZD	2	0
3	A	702	FAD	1	0

The following is a two-dimensional graphical depiction of Mogul quality analysis of bond lengths, bond angles, torsion angles, and ring geometry for all instances of the Ligand of Interest. In addition, ligands with molecular weight > 250 and outliers as shown on the validation Tables will also be included. For torsion angles, if less than 5% of the Mogul distribution of torsion angles is within 10 degrees of the torsion angle in question, then that torsion angle is considered an outlier. Any bond that is central to one or more torsion angles identified as an outlier by Mogul will be highlighted in the graph. For rings, the root-mean-square deviation (RMSD) between the ring in question and similar rings identified by Mogul is calculated over all ring torsion angles. If the average RMSD is greater than 60 degrees and the minimal RMSD between the ring in question and any Mogul-identified rings is also greater than 60 degrees, then that ring is considered an outlier. The outliers are highlighted in purple. The color gray indicates Mogul did not find sufficient equivalents in the CSD to analyse the geometry.





5.7 Other polymers [i](#)

There are no such residues in this entry.

5.8 Polymer linkage issues [i](#)

There are no chain breaks in this entry.

6 Fit of model and data [i](#)

6.1 Protein, DNA and RNA chains [i](#)

In the following table, the column labelled ‘#RSRZ> 2’ contains the number (and percentage) of RSRZ outliers, followed by percent RSRZ outliers for the chain as percentile scores relative to all X-ray entries and entries of similar resolution. The OWAB column contains the minimum, median, 95th percentile and maximum values of the occupancy-weighted average B-factor per residue. The column labelled ‘Q< 0.9’ lists the number of (and percentage) of residues with an average occupancy less than 0.9.

Mol	Chain	Analysed	<RSRZ>	#RSRZ>2	OWAB(Å ²)	Q<0.9
1	A	581/590 (98%)	-0.07	5 (0%) 84 84	56, 80, 113, 131	0

All (5) RSRZ outliers are listed below:

Mol	Chain	Res	Type	RSRZ
1	A	86	THR	3.9
1	A	87	PHE	2.8
1	A	363	HIS	2.7
1	A	88	ILE	2.5
1	A	94	ASP	2.1

6.2 Non-standard residues in protein, DNA, RNA chains [i](#)

In the following table, the Atoms column lists the number of modelled atoms in the group and the number defined in the chemical component dictionary. The B-factors column lists the minimum, median, 95th percentile and maximum values of B factors of atoms in the group. The column labelled ‘Q< 0.9’ lists the number of atoms with occupancy less than 0.9.

Mol	Type	Chain	Res	Atoms	RSCC	RSR	B-factors(Å ²)	Q<0.9
1	CSD	A	340	8/9	0.86	0.16	68,100,114,123	0

6.3 Carbohydrates [i](#)

There are no monosaccharides in this entry.

6.4 Ligands [i](#)

In the following table, the Atoms column lists the number of modelled atoms in the group and the number defined in the chemical component dictionary. The B-factors column lists the minimum,

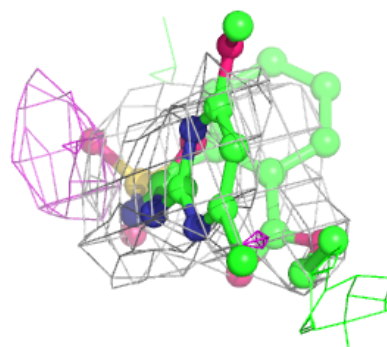
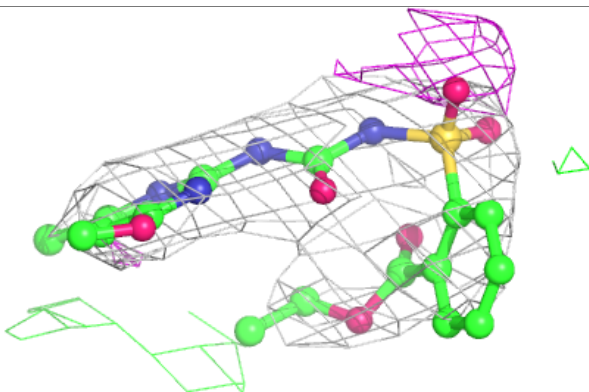
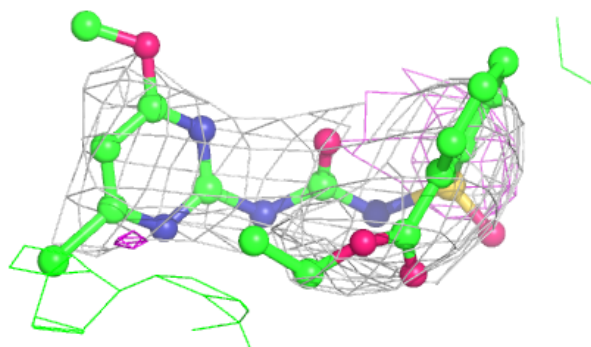
median, 95th percentile and maximum values of B factors of atoms in the group. The column labelled 'Q<0.9' lists the number of atoms with occupancy less than 0.9.

Mol	Type	Chain	Res	Atoms	RSCC	RSR	B-factors(Å ²)	Q<0.9
2	MG	A	701	1/1	0.83	0.30	74,74,74,74	0
7	SO4	A	707	5/5	0.90	0.25	72,83,108,141	5
6	NHE	A	706	13/13	0.94	0.24	74,94,111,114	0
4	CIE	A	703	27/27	0.94	0.25	72,94,117,133	27
3	FAD	A	702	53/53	0.95	0.20	54,74,88,96	0
2	MG	A	705	1/1	0.96	0.21	93,93,93,93	0
5	TZD	A	704	27/27	0.98	0.25	56,71,83,88	6

The following is a graphical depiction of the model fit to experimental electron density of all instances of the Ligand of Interest. In addition, ligands with molecular weight > 250 and outliers as shown on the geometry validation Tables will also be included. Each fit is shown from different orientation to approximate a three-dimensional view.

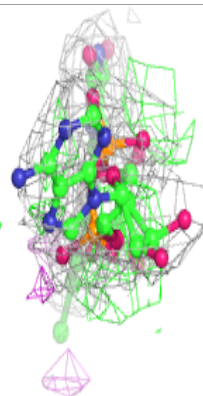
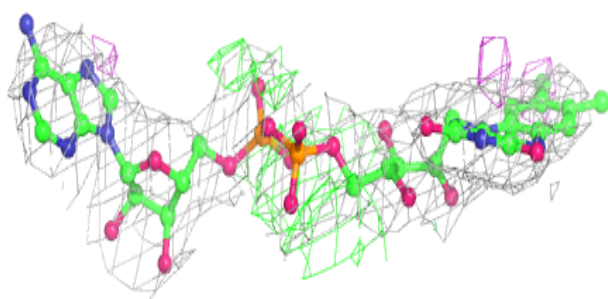
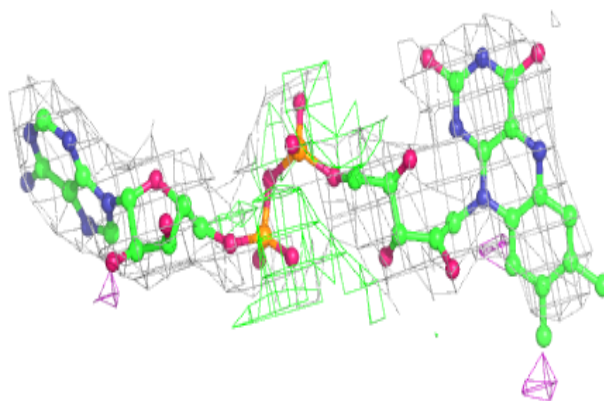
Electron density around CIE A 703:

2mF_o-DF_c (at 0.7 rmsd) in gray
mF_o-DF_c (at 3 rmsd) in purple (negative)
and green (positive)

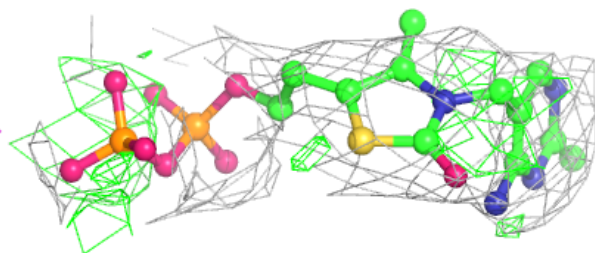
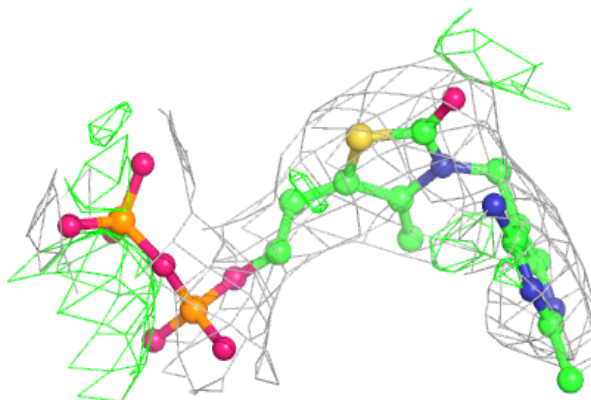


Electron density around FAD A 702:

$2mF_o-DF_c$ (at 0.7 rmsd) in gray
 mF_o-DF_c (at 3 rmsd) in purple (negative)
and green (positive)

**Electron density around TZD A 704:**

$2mF_o-DF_c$ (at 0.7 rmsd) in gray
 mF_o-DF_c (at 3 rmsd) in purple (negative)
and green (positive)



6.5 Other polymers [i](#)

There are no such residues in this entry.