



Full wwPDB X-ray Structure Validation Report ⓘ

Jun 13, 2020 – 09:38 pm BST

PDB ID : 5SXG
Title : Crystal Structure of the Cancer Genomic DNA Mutator APOBEC3B
Authors : Shi, K.; Kurahashi, K.; Aihara, H.
Deposited on : 2016-08-09
Resolution : 1.93 Å(reported)

This is a Full wwPDB X-ray Structure Validation Report for a publicly released PDB entry.

We welcome your comments at validation@mail.wwpdb.org

A user guide is available at

<https://www.wwpdb.org/validation/2017/XrayValidationReportHelp>

with specific help available everywhere you see the ⓘ symbol.

The following versions of software and data (see [references ⓘ](#)) were used in the production of this report:

MolProbity : 4.02b-467
Mogul : 1.8.5 (274361), CSD as541be (2020)
Xtriage (Phenix) : 1.13
EDS : 2.11
Percentile statistics : 20191225.v01 (using entries in the PDB archive December 25th 2019)
Refmac : 5.8.0158
CCP4 : 7.0.044 (Gargrove)
Ideal geometry (proteins) : Engh & Huber (2001)
Ideal geometry (DNA, RNA) : Parkinson et al. (1996)
Validation Pipeline (wwPDB-VP) : 2.11

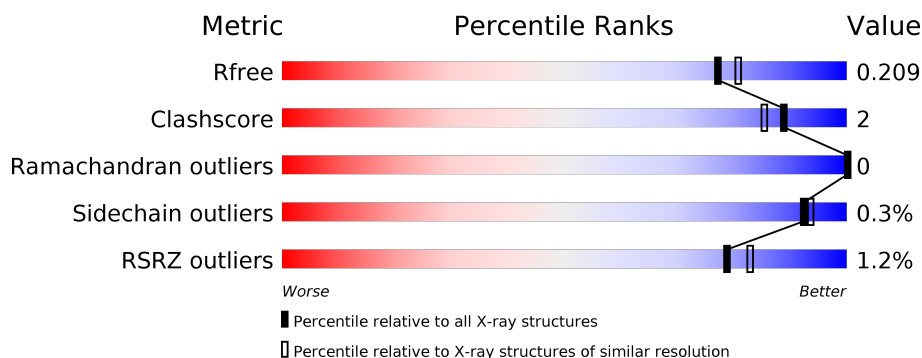
1 Overall quality at a glance

The following experimental techniques were used to determine the structure:

X-RAY DIFFRACTION

The reported resolution of this entry is 1.93 Å.

Percentile scores (ranging between 0-100) for global validation metrics of the entry are shown in the following graphic. The table shows the number of entries on which the scores are based.



Metric	Whole archive (#Entries)	Similar resolution (#Entries, resolution range(Å))
R_{free}	130704	4310 (1.96-1.92)
Clashscore	141614	1023 (1.94-1.94)
Ramachandran outliers	138981	1007 (1.94-1.94)
Sidechain outliers	138945	1007 (1.94-1.94)
RSRZ outliers	127900	4250 (1.96-1.92)

The table below summarises the geometric issues observed across the polymeric chains and their fit to the electron density. The red, orange, yellow and green segments on the lower bar indicate the fraction of residues that contain outliers for ≥ 3 , 2, 1 and 0 types of geometric quality criteria respectively. A grey segment represents the fraction of residues that are not modelled. The numeric value for each fraction is indicated below the corresponding segment, with a dot representing fractions $\leq 5\%$. The upper red bar (where present) indicates the fraction of residues that have poor fit to the electron density. The numeric value is given above the bar.

Mol	Chain	Length	Quality of chain
1	A	185	
1	B	185	

2 Entry composition

There are 5 unique types of molecules in this entry. The entry contains 5967 atoms, of which 2765 are hydrogens and 0 are deuteriums.

In the tables below, the ZeroOcc column contains the number of atoms modelled with zero occupancy, the AltConf column contains the number of residues with at least one atom in alternate conformation and the Trace column contains the number of residues modelled with at most 2 atoms.

- Molecule 1 is a protein called DNA dC->dU-editing enzyme APOBEC-3B.

Mol	Chain	Residues	Atoms						ZeroOcc	AltConf	Trace
1	A	173	Total	C	H	N	O	S	0	0	0
			2807	923	1361	252	261	10			
1	B	172	Total	C	H	N	O	S	0	0	0
			2789	917	1351	251	260	10			

There are 36 discrepancies between the modelled and reference sequences:

Chain	Residue	Modelled	Actual	Comment	Reference
A	186	SER	-	expression tag	UNP Q9UH17
A	187	GLU	-	expression tag	UNP Q9UH17
A	188	ILE	-	expression tag	UNP Q9UH17
A	189	LEU	-	expression tag	UNP Q9UH17
A	190	ARG	-	expression tag	UNP Q9UH17
A	200	SER	PHE	engineered mutation	UNP Q9UH17
A	228	SER	TRP	engineered mutation	UNP Q9UH17
A	230	LYS	LEU	engineered mutation	UNP Q9UH17
A	?	-	ALA	deletion	UNP Q9UH17
A	?	-	LYS	deletion	UNP Q9UH17
A	?	-	ASN	deletion	UNP Q9UH17
A	?	-	LEU	deletion	UNP Q9UH17
A	?	-	LEU	deletion	UNP Q9UH17
A	?	-	CYS	deletion	UNP Q9UH17
A	?	-	GLY	deletion	UNP Q9UH17
A	?	-	PHE	deletion	UNP Q9UH17
A	250	SER	TYR	engineered mutation	UNP Q9UH17
A	308	LYS	PHE	engineered mutation	UNP Q9UH17
B	186	SER	-	expression tag	UNP Q9UH17
B	187	GLU	-	expression tag	UNP Q9UH17
B	188	ILE	-	expression tag	UNP Q9UH17
B	189	LEU	-	expression tag	UNP Q9UH17
B	190	ARG	-	expression tag	UNP Q9UH17
B	200	SER	PHE	engineered mutation	UNP Q9UH17
B	228	SER	TRP	engineered mutation	UNP Q9UH17

Continued on next page...

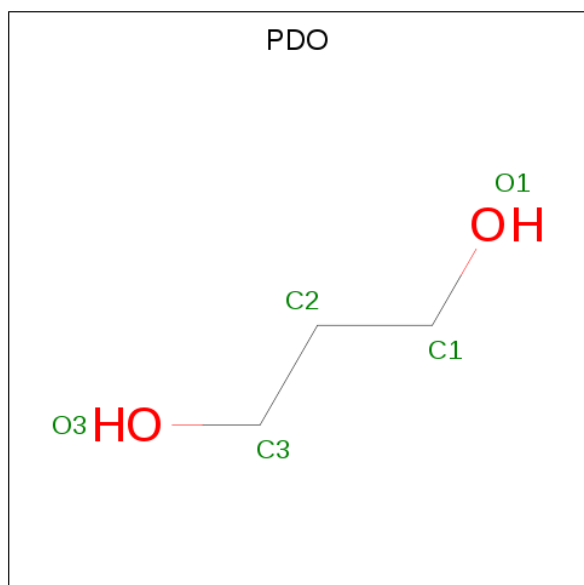
Continued from previous page...

Chain	Residue	Modelled	Actual	Comment	Reference
B	230	LYS	LEU	engineered mutation	UNP Q9UH17
B	?	-	ALA	deletion	UNP Q9UH17
B	?	-	LYS	deletion	UNP Q9UH17
B	?	-	ASN	deletion	UNP Q9UH17
B	?	-	LEU	deletion	UNP Q9UH17
B	?	-	LEU	deletion	UNP Q9UH17
B	?	-	CYS	deletion	UNP Q9UH17
B	?	-	GLY	deletion	UNP Q9UH17
B	?	-	PHE	deletion	UNP Q9UH17
B	250	SER	TYR	engineered mutation	UNP Q9UH17
B	308	LYS	PHE	engineered mutation	UNP Q9UH17

- Molecule 2 is ZINC ION (three-letter code: ZN) (formula: Zn).

Mol	Chain	Residues	Atoms	ZeroOcc	AltConf
2	B	1	Total Zn 1 1	0	0
2	A	1	Total Zn 1 1	0	0

- Molecule 3 is 1,3-PROPANDIOL (three-letter code: PDO) (formula: C₃H₈O₂).



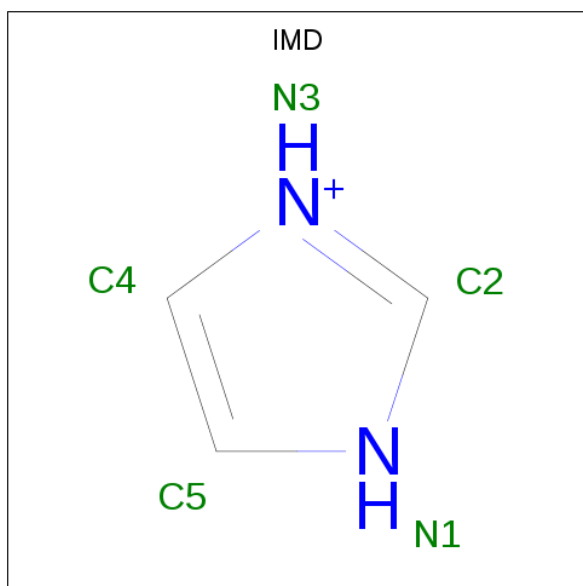
Mol	Chain	Residues	Atoms	ZeroOcc	AltConf
3	A	1	Total C H O 13 3 8 2	0	0

Continued on next page...

Continued from previous page...

Mol	Chain	Residues	Atoms				ZeroOcc	AltConf
3	A	1	Total	C	H	O	0	0
			13	3	8	2		
3	B	1	Total	C	H	O	0	0
			13	3	8	2		
3	B	1	Total	C	H	O	0	0
			13	3	8	2		
3	B	1	Total	C	H	O	0	0
			13	3	8	2		
3	B	1	Total	C	H	O	0	0
			13	3	8	2		

- Molecule 4 is IMIDAZOLE (three-letter code: IMD) (formula: $C_3H_5N_2$).



Mol	Chain	Residues	Atoms				ZeroOcc	AltConf
4	A	1	Total	C	H	N	0	0
			10	3	5	2		

- Molecule 5 is water.

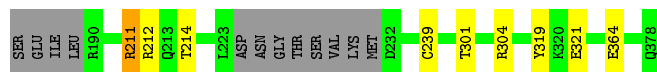
Mol	Chain	Residues	Atoms		ZeroOcc	AltConf
5	A	143	Total	O	0	0
			143	143		
5	B	138	Total	O	0	0
			138	138		

3 Residue-property plots [i](#)


These plots are drawn for all protein, RNA and DNA chains in the entry. The first graphic for a chain summarises the proportions of the various outlier classes displayed in the second graphic. The second graphic shows the sequence view annotated by issues in geometry and electron density. Residues are color-coded according to the number of geometric quality criteria for which they contain at least one outlier: green = 0, yellow = 1, orange = 2 and red = 3 or more. A red dot above a residue indicates a poor fit to the electron density ($RSRZ > 2$). Stretches of 2 or more consecutive residues without any outlier are shown as a green connector. Residues present in the sample, but not in the model, are shown in grey.

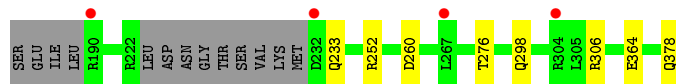
- Molecule 1: DNA dC->dU-editing enzyme APOBEC-3B

Chain A:  89% 6%



- Molecule 1: DNA dC->dU-editing enzyme APOBEC-3B

Chain B:  89% 7%



4 Data and refinement statistics

Property	Value	Source
Space group	P 1 21 1	Depositor
Cell constants a, b, c, α , β , γ	44.39Å 50.80Å 76.89Å 90.00° 102.86° 90.00°	Depositor
Resolution (Å)	37.48 – 1.93 43.28 – 1.93	Depositor EDS
% Data completeness (in resolution range)	99.7 (37.48-1.93) 99.7 (43.28-1.93)	Depositor EDS
R_{merge}	0.10	Depositor
R_{sym}	0.10	Depositor
$\langle I/\sigma(I) \rangle$ ¹	1.78 (at 1.94Å)	Xtriage
Refinement program	PHENIX dev_2499	Depositor
R, R_{free}	0.177 , 0.210 0.176 , 0.209	Depositor DCC
R_{free} test set	1217 reflections (4.82%)	wwPDB-VP
Wilson B-factor (Å ²)	21.8	Xtriage
Anisotropy	0.591	Xtriage
Bulk solvent k_{sol} (e/Å ³), B_{sol} (Å ²)	0.38 , 50.0	EDS
L-test for twinning ²	$\langle L \rangle = 0.48$, $\langle L^2 \rangle = 0.31$	Xtriage
Estimated twinning fraction	No twinning to report.	Xtriage
F_o, F_c correlation	0.96	EDS
Total number of atoms	5967	wwPDB-VP
Average B, all atoms (Å ²)	33.0	wwPDB-VP

Xtriage's analysis on translational NCS is as follows: *The largest off-origin peak in the Patterson function is 18.18% of the height of the origin peak. No significant pseudotranslation is detected.*

¹Intensities estimated from amplitudes.

²Theoretical values of $\langle |L| \rangle$, $\langle L^2 \rangle$ for acentric reflections are 0.5, 0.333 respectively for untwinned datasets, and 0.375, 0.2 for perfectly twinned datasets.

5 Model quality

5.1 Standard geometry

Bond lengths and bond angles in the following residue types are not validated in this section: PDO, ZN, IMD

The Z score for a bond length (or angle) is the number of standard deviations the observed value is removed from the expected value. A bond length (or angle) with $|Z| > 5$ is considered an outlier worth inspection. RMSZ is the root-mean-square of all Z scores of the bond lengths (or angles).

Mol	Chain	Bond lengths		Bond angles	
		RMSZ	# Z >5	RMSZ	# Z >5
1	A	0.32	0/1486	0.50	0/2015
1	B	0.29	0/1478	0.48	0/2004
All	All	0.31	0/2964	0.49	0/4019

There are no bond length outliers.

There are no bond angle outliers.

There are no chirality outliers.

There are no planarity outliers.

5.2 Too-close contacts

In the following table, the Non-H and H(model) columns list the number of non-hydrogen atoms and hydrogen atoms in the chain respectively. The H(added) column lists the number of hydrogen atoms added and optimized by MolProbity. The Clashes column lists the number of clashes within the asymmetric unit, whereas Symm-Clashes lists symmetry related clashes.

Mol	Chain	Non-H	H(model)	H(added)	Clashes	Symm-Clashes
1	A	1446	1361	1373	6	1
1	B	1438	1351	1362	5	1
2	A	1	0	0	0	0
2	B	1	0	0	0	0
3	A	10	16	16	0	0
3	B	20	32	32	0	0
4	A	5	5	5	0	0
5	A	143	0	0	4	1
5	B	138	0	0	3	0
All	All	3202	2765	2788	11	2

The all-atom clashscore is defined as the number of clashes found per 1000 atoms (including

hydrogen atoms). The all-atom clashscore for this structure is 2.

All (11) close contacts within the same asymmetric unit are listed below, sorted by their clash magnitude.

Atom-1	Atom-2	Interatomic distance (Å)	Clash overlap (Å)
1:B:298:GLN:NE2	5:B:501:HOH:O	2.06	0.87
1:A:364:GLU:OE2	5:A:501:HOH:O	2.01	0.77
1:A:212:ARG:NH2	5:A:504:HOH:O	2.18	0.76
1:A:301:THR:O	1:A:304:ARG:NH1	2.27	0.68
1:A:321:GLU:OE1	5:A:502:HOH:O	2.12	0.66
1:B:378:GLN:NE2	5:B:506:HOH:O	2.37	0.57
1:A:211:ARG:NH2	5:A:508:HOH:O	2.38	0.48
1:B:276:THR:OG1	1:B:306:ARG:NH1	2.46	0.48
1:B:233:GLN:O	5:B:502:HOH:O	2.20	0.47
1:B:252:ARG:NE	1:B:260:ASP:OD2	2.36	0.47
1:A:214:THR:O	1:A:239:CYS:HA	2.19	0.41

All (2) symmetry-related close contacts are listed below. The label for Atom-2 includes the symmetry operator and encoded unit-cell translations to be applied.

Atom-1	Atom-2	Interatomic distance (Å)	Clash overlap (Å)
5:A:522:HOH:O	5:A:607:HOH:O[2_545]	2.13	0.07
1:A:319:TYR:HH	1:B:364:GLU:OE1[1_455]	1.55	0.05

5.3 Torsion angles

5.3.1 Protein backbone

In the following table, the Percentiles column shows the percent Ramachandran outliers of the chain as a percentile score with respect to all X-ray entries followed by that with respect to entries of similar resolution.

The Analysed column shows the number of residues for which the backbone conformation was analysed, and the total number of residues.

Mol	Chain	Analysed	Favoured	Allowed	Outliers	Percentiles	
1	A	169/185 (91%)	167 (99%)	2 (1%)	0	100	100
1	B	168/185 (91%)	164 (98%)	4 (2%)	0	100	100
All	All	337/370 (91%)	331 (98%)	6 (2%)	0	100	100

There are no Ramachandran outliers to report.

5.3.2 Protein sidechains [i](#)

In the following table, the Percentiles column shows the percent sidechain outliers of the chain as a percentile score with respect to all X-ray entries followed by that with respect to entries of similar resolution.

The Analysed column shows the number of residues for which the sidechain conformation was analysed, and the total number of residues.

Mol	Chain	Analysed	Rotameric	Outliers	Percentiles	
1	A	154/165 (93%)	153 (99%)	1 (1%)	86	85
1	B	153/165 (93%)	153 (100%)	0	100	100
All	All	307/330 (93%)	306 (100%)	1 (0%)	92	93

All (1) residues with a non-rotameric sidechain are listed below:

Mol	Chain	Res	Type
1	A	211	ARG

Some sidechains can be flipped to improve hydrogen bonding and reduce clashes. There are no such sidechains identified.

5.3.3 RNA [i](#)

There are no RNA molecules in this entry.

5.4 Non-standard residues in protein, DNA, RNA chains [i](#)

There are no non-standard protein/DNA/RNA residues in this entry.

5.5 Carbohydrates [i](#)

There are no carbohydrates in this entry.

5.6 Ligand geometry [i](#)

Of 9 ligands modelled in this entry, 2 are monoatomic - leaving 7 for Mogul analysis.

In the following table, the Counts columns list the number of bonds (or angles) for which Mogul statistics could be retrieved, the number of bonds (or angles) that are observed in the model and the number of bonds (or angles) that are defined in the Chemical Component Dictionary. The Link column lists molecule types, if any, to which the group is linked. The Z score for a bond

length (or angle) is the number of standard deviations the observed value is removed from the expected value. A bond length (or angle) with $|Z| > 2$ is considered an outlier worth inspection. RMSZ is the root-mean-square of all Z scores of the bond lengths (or angles).

Mol	Type	Chain	Res	Link	Bond lengths			Bond angles		
					Counts	RMSZ	$\# Z > 2$	Counts	RMSZ	$\# Z > 2$
3	PDO	A	404	-	4,4,4	0.34	0	3,3,3	0.45	0
3	PDO	B	402	-	4,4,4	0.37	0	3,3,3	0.40	0
3	PDO	A	402	-	4,4,4	0.38	0	3,3,3	0.33	0
3	PDO	B	405	-	4,4,4	0.37	0	3,3,3	0.48	0
4	IMD	A	403	-	3,5,5	0.43	0	4,5,5	0.56	0
3	PDO	B	404	-	4,4,4	0.32	0	3,3,3	0.48	0
3	PDO	B	403	-	4,4,4	0.34	0	3,3,3	0.44	0

In the following table, the Chirals column lists the number of chiral outliers, the number of chiral centers analysed, the number of these observed in the model and the number defined in the Chemical Component Dictionary. Similar counts are reported in the Torsion and Rings columns. '-' means no outliers of that kind were identified.

Mol	Type	Chain	Res	Link	Chirals	Torsions	Rings
4	IMD	A	403	-	-	-	0/1/1/1
3	PDO	B	402	-	-	0/2/2/2	-
3	PDO	A	402	-	-	0/2/2/2	-
3	PDO	B	405	-	-	0/2/2/2	-
3	PDO	A	404	-	-	0/2/2/2	-
3	PDO	B	404	-	-	0/2/2/2	-
3	PDO	B	403	-	-	0/2/2/2	-

There are no bond length outliers.

There are no bond angle outliers.

There are no chirality outliers.

There are no torsion outliers.

There are no ring outliers.

No monomer is involved in short contacts.

5.7 Other polymers ⓘ

There are no such residues in this entry.

5.8 Polymer linkage issues ⓘ

There are no chain breaks in this entry.

6 Fit of model and data [i](#)

6.1 Protein, DNA and RNA chains [i](#)

In the following table, the column labelled ‘#RSRZ> 2’ contains the number (and percentage) of RSRZ outliers, followed by percent RSRZ outliers for the chain as percentile scores relative to all X-ray entries and entries of similar resolution. The OWAB column contains the minimum, median, 95th percentile and maximum values of the occupancy-weighted average B-factor per residue. The column labelled ‘Q< 0.9’ lists the number of (and percentage) of residues with an average occupancy less than 0.9.

Mol	Chain	Analysed	<RSRZ>	#RSRZ>2	OWAB(Å ²)	Q<0.9
1	A	173/185 (93%)	-0.36	0 100 100	13, 23, 46, 82	0
1	B	172/185 (92%)	-0.08	4 (2%) 60 67	15, 28, 67, 125	0
All	All	345/370 (93%)	-0.22	4 (1%) 79 83	13, 25, 60, 125	0

All (4) RSRZ outliers are listed below:

Mol	Chain	Res	Type	RSRZ
1	B	267	LEU	5.5
1	B	232	ASP	2.8
1	B	304	ARG	2.6
1	B	190	ARG	2.6

6.2 Non-standard residues in protein, DNA, RNA chains [i](#)

There are no non-standard protein/DNA/RNA residues in this entry.

6.3 Carbohydrates [i](#)

There are no carbohydrates in this entry.

6.4 Ligands [i](#)

In the following table, the Atoms column lists the number of modelled atoms in the group and the number defined in the chemical component dictionary. The B-factors column lists the minimum, median, 95th percentile and maximum values of B factors of atoms in the group. The column labelled ‘Q< 0.9’ lists the number of atoms with occupancy less than 0.9.

Mol	Type	Chain	Res	Atoms	RSCC	RSR	B-factors(Å ²)	Q<0.9
3	PDO	B	405	5/5	0.69	0.19	48,58,61,64	0

Continued on next page...

Continued from previous page...

Mol	Type	Chain	Res	Atoms	RSCC	RSR	B-factors(\AA^2)	Q<0.9
4	IMD	A	403	5/5	0.71	0.20	64,64,77,77	0
3	PDO	A	404	5/5	0.90	0.14	51,62,62,63	0
3	PDO	B	402	5/5	0.90	0.17	39,52,60,63	0
3	PDO	B	403	5/5	0.91	0.15	39,47,52,52	0
3	PDO	A	402	5/5	0.93	0.21	51,62,62,63	0
3	PDO	B	404	5/5	0.95	0.14	33,40,44,44	0
2	ZN	B	401	1/1	1.00	0.03	24,24,24,24	0
2	ZN	A	401	1/1	1.00	0.05	18,18,18,18	0

6.5 Other polymers [i](#)

There are no such residues in this entry.