



wwPDB X-ray Structure Validation Summary Report ⓘ

May 16, 2020 – 08:17 am BST

PDB ID : 5SYI
Title : Structure of D141A variant of B. pseudomallei KatG complexed with INH
Authors : Loewen, P.C.
Deposited on : 2016-08-11
Resolution : 1.70 Å(reported)

This is a wwPDB X-ray Structure Validation Summary Report for a publicly released PDB entry.

We welcome your comments at validation@mail.wwpdb.org

A user guide is available at

<https://www.wwpdb.org/validation/2017/XrayValidationReportHelp>

with specific help available everywhere you see the ⓘ symbol.

The following versions of software and data (see [references ⓘ](#)) were used in the production of this report:

MolProbity : 4.02b-467
Mogul : 1.8.5 (274361), CSD as541be (2020)
Xtriage (Phenix) : 1.13
EDS : 2.11
buster-report : 1.1.7 (2018)
Percentile statistics : 20191225.v01 (using entries in the PDB archive December 25th 2019)
Refmac : 5.8.0158
CCP4 : 7.0.044 (Gargrove)
Ideal geometry (proteins) : Engh & Huber (2001)
Ideal geometry (DNA, RNA) : Parkinson et al. (1996)
Validation Pipeline (wwPDB-VP) : 2.11

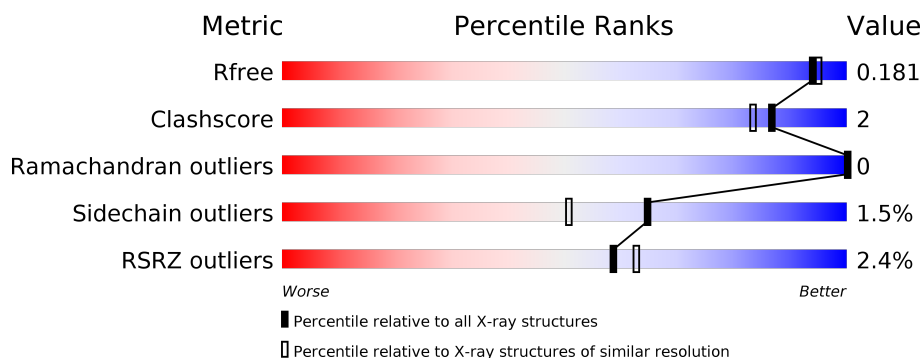
1 Overall quality at a glance ⓘ

The following experimental techniques were used to determine the structure:

X-RAY DIFFRACTION

The reported resolution of this entry is 1.70 Å.

Percentile scores (ranging between 0-100) for global validation metrics of the entry are shown in the following graphic. The table shows the number of entries on which the scores are based.



Metric	Whole archive (#Entries)	Similar resolution (#Entries, resolution range(Å))
R_{free}	130704	4298 (1.70-1.70)
Clashscore	141614	4695 (1.70-1.70)
Ramachandran outliers	138981	4610 (1.70-1.70)
Sidechain outliers	138945	4610 (1.70-1.70)
RSRZ outliers	127900	4222 (1.70-1.70)

The table below summarises the geometric issues observed across the polymeric chains and their fit to the electron density. The red, orange, yellow and green segments on the lower bar indicate the fraction of residues that contain outliers for ≥ 3 , 2, 1 and 0 types of geometric quality criteria respectively. A grey segment represents the fraction of residues that are not modelled. The numeric value for each fraction is indicated below the corresponding segment, with a dot representing fractions $\leq 5\%$. The upper red bar (where present) indicates the fraction of residues that have poor fit to the electron density. The numeric value is given above the bar.

Mol	Chain	Length	Quality of chain
1	A	728	<div> <div>2%</div> <div> <div></div> <div>86%</div> <div>11%</div> <div>••</div> </div> </div>
1	B	728	<div> <div>2%</div> <div> <div></div> <div>85%</div> <div>11%</div> <div>••</div> </div> </div>

The following table lists non-polymeric compounds, carbohydrate monomers and non-standard residues in protein, DNA, RNA chains that are outliers for geometric or electron-density-fit criteria:

Mol	Type	Chain	Res	Chirality	Geometry	Clashes	Electron density
6	NIZ	B	805	-	X	-	-
8	PO4	B	809	-	X	-	-

2 Entry composition [i](#)

There are 9 unique types of molecules in this entry. The entry contains 12740 atoms, of which 0 are hydrogens and 0 are deuteriums.

In the tables below, the ZeroOcc column contains the number of atoms modelled with zero occupancy, the AltConf column contains the number of residues with at least one atom in alternate conformation and the Trace column contains the number of residues modelled with at most 2 atoms.

- Molecule 1 is a protein called Catalase-peroxidase.

Mol	Chain	Residues	Atoms					ZeroOcc	AltConf	Trace
1	A	713	Total	C	N	O	S	0	4	0
			5523	3490	984	1035	14			
1	B	713	Total	C	N	O	S	0	5	0
			5526	3494	984	1034	14			

There are 2 discrepancies between the modelled and reference sequences:

Chain	Residue	Modelled	Actual	Comment	Reference
A	141	ALA	ASP	engineered mutation	UNP Q3JNW6
B	141	ALA	ASP	engineered mutation	UNP Q3JNW6

- Molecule 2 is PROTOPORPHYRIN IX CONTAINING FE (three-letter code: HEM) (formula: $C_{34}H_{32}FeN_4O_4$).



Mol	Chain	Residues	Atoms					ZeroOcc	AltConf
2	A	1	Total	C	Fe	N	O	0	0
			43	34	1	4	4		

Continued on next page...

Continued from previous page...

Mol	Chain	Residues	Atoms				ZeroOcc	AltConf
2	B	1	Total	C	Fe	N	O	
			43	34	1	4	4	
							0	0

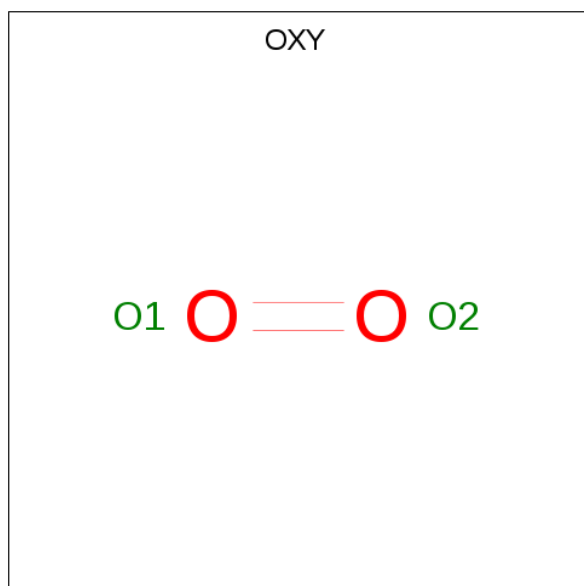
- Molecule 3 is SODIUM ION (three-letter code: NA) (formula: Na).

Mol	Chain	Residues	Atoms		ZeroOcc	AltConf
3	B	1	Total	Na		
			1	1	0	0
3	A	1	Total	Na		
			1	1	0	0

- Molecule 4 is CHLORIDE ION (three-letter code: CL) (formula: Cl).

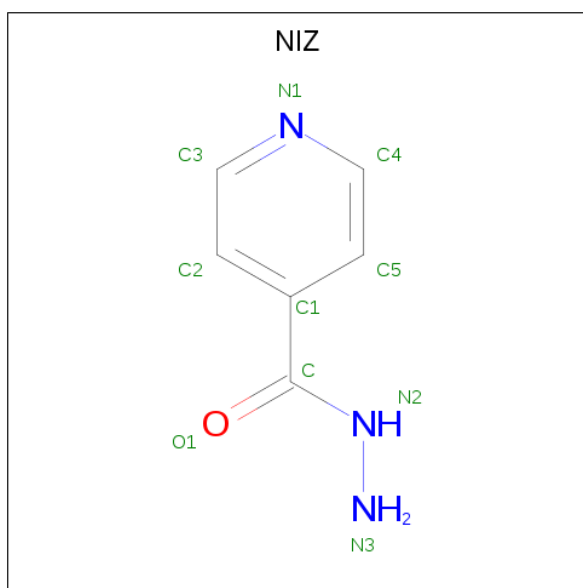
Mol	Chain	Residues	Atoms		ZeroOcc	AltConf
4	B	1	Total	Cl		
			1	1	0	0
4	A	1	Total	Cl		
			1	1	0	0

- Molecule 5 is OXYGEN MOLECULE (three-letter code: OXY) (formula: O₂).



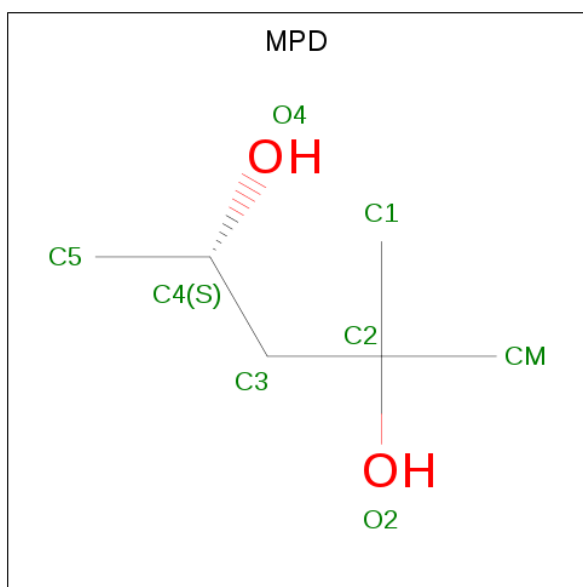
Mol	Chain	Residues	Atoms		ZeroOcc	AltConf
5	A	1	Total	O		
			2	2	0	0
5	B	1	Total	O		
			2	2	0	0

- Molecule 6 is pyridine-4-carbohydrazide (three-letter code: NIZ) (formula: $C_6H_7N_3O$).



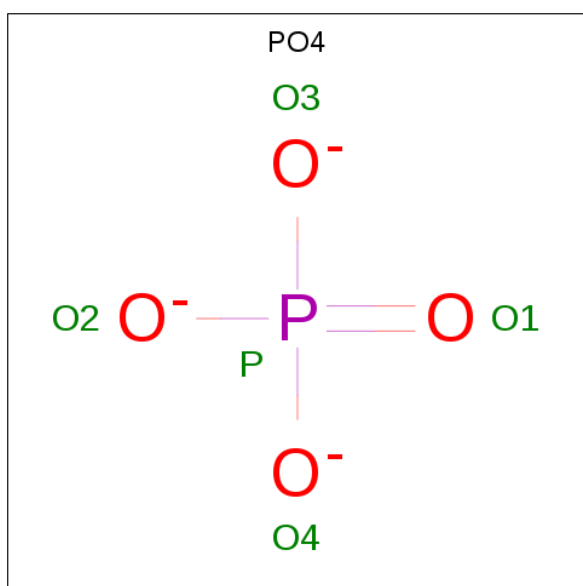
Mol	Chain	Residues	Atoms				ZeroOcc	AltConf
6	A	1	Total	C	N	O	0	0
			10	6	3	1		
6	B	1	Total	C	N	O	0	0
			10	6	3	1		
6	B	1	Total	C	N	O	0	0
			10	6	3	1		

- Molecule 7 is (4S)-2-METHYL-2,4-PENTANEDIOL (three-letter code: MPD) (formula: $C_6H_{14}O_2$).



Mol	Chain	Residues	Atoms	ZeroOcc	AltConf
7	A	1	Total C O 8 6 2	0	0
7	A	1	Total C O 8 6 2	0	0
7	B	1	Total C O 8 6 2	0	0
7	B	1	Total C O 8 6 2	0	0

- Molecule 8 is PHOSPHATE ION (three-letter code: PO4) (formula: O₄P).



Mol	Chain	Residues	Atoms	ZeroOcc	AltConf
8	A	1	Total O P 5 4 1	0	0
8	B	1	Total O P 5 4 1	0	0

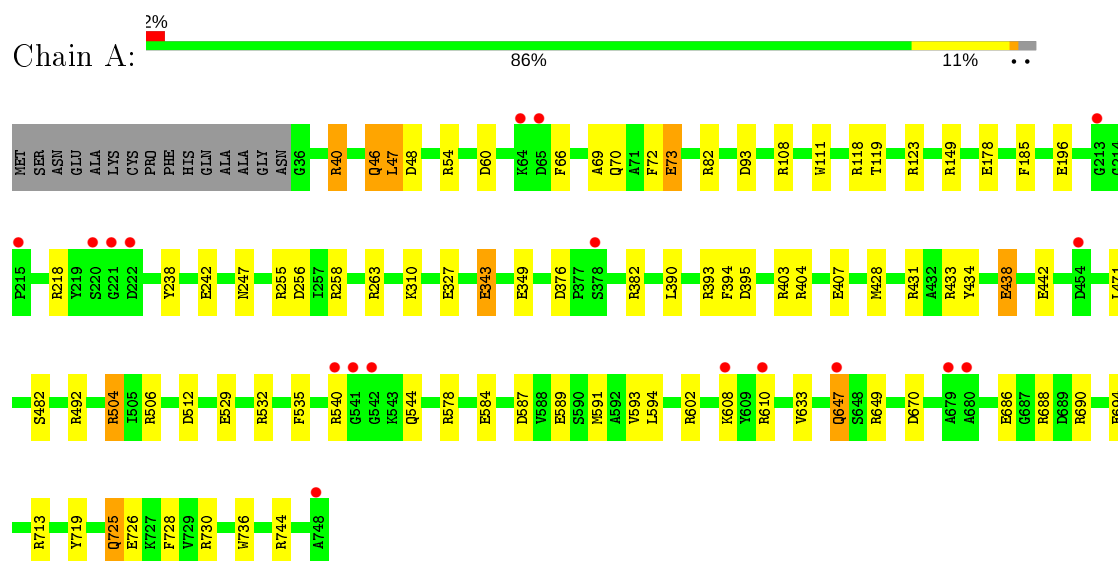
- Molecule 9 is water.

Mol	Chain	Residues	Atoms	ZeroOcc	AltConf
9	A	783	Total O 783 783	0	0
9	B	742	Total O 742 742	0	0

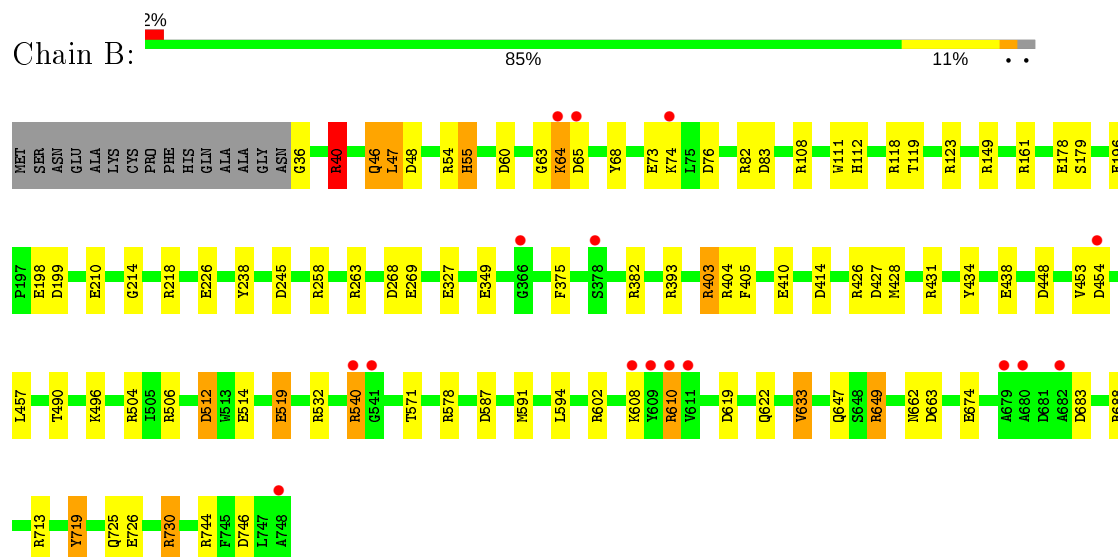
3 Residue-property plots [i](#)

These plots are drawn for all protein, RNA and DNA chains in the entry. The first graphic for a chain summarises the proportions of the various outlier classes displayed in the second graphic. The second graphic shows the sequence view annotated by issues in geometry and electron density. Residues are color-coded according to the number of geometric quality criteria for which they contain at least one outlier: green = 0, yellow = 1, orange = 2 and red = 3 or more. A red dot above a residue indicates a poor fit to the electron density ($RSRZ > 2$). Stretches of 2 or more consecutive residues without any outlier are shown as a green connector. Residues present in the sample, but not in the model, are shown in grey.

• Molecule 1: Catalase-peroxidase



• Molecule 1: Catalase-peroxidase



4 Data and refinement statistics

Property	Value	Source
Space group	P 21 21 21	Depositor
Cell constants a, b, c, α , β , γ	100.77Å 115.59Å 174.57Å 90.00° 90.00° 90.00°	Depositor
Resolution (Å)	20.00 – 1.70 40.83 – 1.70	Depositor EDS
% Data completeness (in resolution range)	99.4 (20.00-1.70) 99.4 (40.83-1.70)	Depositor EDS
R_{merge}	(Not available)	Depositor
R_{sym}	0.09	Depositor
$\langle I/\sigma(I) \rangle$ ¹	2.70 (at 1.70Å)	Xtriage
Refinement program	REFMAC 5.8.0151	Depositor
R, R_{free}	0.145 , 0.170 0.159 , 0.181	Depositor DCC
R_{free} test set	11143 reflections (5.02%)	wwPDB-VP
Wilson B-factor (Å ²)	19.2	Xtriage
Anisotropy	0.263	Xtriage
Bulk solvent k_{sol} (e/Å ³), B_{sol} (Å ²)	0.35 , 43.5	EDS
L-test for twinning ²	$\langle L \rangle = 0.50$, $\langle L^2 \rangle = 0.33$	Xtriage
Estimated twinning fraction	No twinning to report.	Xtriage
F_o, F_c correlation	0.97	EDS
Total number of atoms	12740	wwPDB-VP
Average B, all atoms (Å ²)	23.0	wwPDB-VP

Xtriage's analysis on translational NCS is as follows: *The largest off-origin peak in the Patterson function is 3.22% of the height of the origin peak. No significant pseudotranslation is detected.*

¹Intensities estimated from amplitudes.

²Theoretical values of $\langle |L| \rangle$, $\langle L^2 \rangle$ for acentric reflections are 0.5, 0.333 respectively for untwinned datasets, and 0.375, 0.2 for perfectly twinned datasets.

5 Model quality [i](#)

5.1 Standard geometry [i](#)

Bond lengths and bond angles in the following residue types are not validated in this section: MPD, OXY, CL, NA, PO4, NIZ, HEM

The Z score for a bond length (or angle) is the number of standard deviations the observed value is removed from the expected value. A bond length (or angle) with $|Z| > 5$ is considered an outlier worth inspection. RMSZ is the root-mean-square of all Z scores of the bond lengths (or angles).

Mol	Chain	Bond lengths		Bond angles	
		RMSZ	$\# Z > 5$	RMSZ	$\# Z > 5$
1	A	1.52	52/5677 (0.9%)	1.50	67/7718 (0.9%)
1	B	1.51	47/5685 (0.8%)	1.38	72/7729 (0.9%)
All	All	1.51	99/11362 (0.9%)	1.44	139/15447 (0.9%)

Chiral center outliers are detected by calculating the chiral volume of a chiral center and verifying if the center is modelled as a planar moiety or with the opposite hand. A planarity outlier is detected by checking planarity of atoms in a peptide group, atoms in a mainchain group or atoms of a sidechain that are expected to be planar.

Mol	Chain	#Chirality outliers	#Planarity outliers
1	A	0	2

The worst 5 of 99 bond length outliers are listed below:

Mol	Chain	Res	Type	Atoms	Z	Observed(Å)	Ideal(Å)
1	B	726	GLU	CD-OE1	12.09	1.39	1.25
1	A	532	ARG	CD-NE	-10.38	1.28	1.46
1	A	438	GLU	CD-OE1	-9.78	1.14	1.25
1	A	584	GLU	CG-CD	8.80	1.65	1.51
1	A	327	GLU	CD-OE1	8.72	1.35	1.25

The worst 5 of 139 bond angle outliers are listed below:

Mol	Chain	Res	Type	Atoms	Z	Observed(°)	Ideal(°)
1	A	532	ARG	NE-CZ-NH2	-44.01	98.30	120.30
1	A	532	ARG	NE-CZ-NH1	34.08	137.34	120.30
1	A	255	ARG	NE-CZ-NH1	11.20	125.90	120.30
1	A	532	ARG	CD-NE-CZ	11.08	139.12	123.60
1	A	713	ARG	NE-CZ-NH1	10.84	125.72	120.30

There are no chirality outliers.

All (2) planarity outliers are listed below:

Mol	Chain	Res	Type	Group
1	A	438	GLU	Sidechain
1	A	47	LEU	Mainchain

5.2 Too-close contacts ⓘ

In the following table, the Non-H and H(model) columns list the number of non-hydrogen atoms and hydrogen atoms in the chain respectively. The H(added) column lists the number of hydrogen atoms added and optimized by MolProbity. The Clashes column lists the number of clashes within the asymmetric unit, whereas Symm-Clashes lists symmetry related clashes.

Mol	Chain	Non-H	H(model)	H(added)	Clashes	Symm-Clashes
1	A	5523	0	5351	12	0
1	B	5526	0	5360	18	0
2	A	43	0	30	0	0
2	B	43	0	30	0	0
3	A	1	0	0	0	0
3	B	1	0	0	0	0
4	A	1	0	0	0	0
4	B	1	0	0	0	0
5	A	2	0	0	1	0
5	B	2	0	0	1	0
6	A	10	0	7	2	0
6	B	20	0	14	4	0
7	A	16	0	28	10	0
7	B	16	0	28	4	0
8	A	5	0	0	0	0
8	B	5	0	0	0	0
9	A	783	0	0	11	1
9	B	742	0	0	8	1
All	All	12740	0	10848	47	1

The all-atom clashscore is defined as the number of clashes found per 1000 atoms (including hydrogen atoms). The all-atom clashscore for this structure is 2.

The worst 5 of 47 close contacts within the same asymmetric unit are listed below, sorted by their clash magnitude.

Atom-1	Atom-2	Interatomic distance (Å)	Clash overlap (Å)
7:A:806:MPD:O4	7:A:806:MPD:H11	1.44	1.14

Continued on next page...

Continued from previous page...

Atom-1	Atom-2	Interatomic distance (Å)	Clash overlap (Å)
5:B:804:OXY:O1	6:B:806:NIZ:N2	1.85	1.08
1:A:119[B]:THR:HG21	9:A:1012:HOH:O	1.73	0.88
7:A:806:MPD:H53	9:A:1185:HOH:O	1.75	0.85
5:A:804:OXY:O1	6:A:805:NIZ:N2	2.11	0.84

All (1) symmetry-related close contacts are listed below. The label for Atom-2 includes the symmetry operator and encoded unit-cell translations to be applied.

Atom-1	Atom-2	Interatomic distance (Å)	Clash overlap (Å)
9:A:1132:HOH:O	9:B:1056:HOH:O[2_444]	2.16	0.04

5.3 Torsion angles [i](#)

5.3.1 Protein backbone [i](#)

In the following table, the Percentiles column shows the percent Ramachandran outliers of the chain as a percentile score with respect to all X-ray entries followed by that with respect to entries of similar resolution.

The Analysed column shows the number of residues for which the backbone conformation was analysed, and the total number of residues.

Mol	Chain	Analysed	Favoured	Allowed	Outliers	Percentiles	
1	A	715/728 (98%)	706 (99%)	9 (1%)	0	100	100
1	B	716/728 (98%)	709 (99%)	7 (1%)	0	100	100
All	All	1431/1456 (98%)	1415 (99%)	16 (1%)	0	100	100

There are no Ramachandran outliers to report.

5.3.2 Protein sidechains [i](#)

In the following table, the Percentiles column shows the percent sidechain outliers of the chain as a percentile score with respect to all X-ray entries followed by that with respect to entries of similar resolution.

The Analysed column shows the number of residues for which the sidechain conformation was analysed, and the total number of residues.

Mol	Chain	Analysed	Rotameric	Outliers	Percentiles	
1	A	553/560 (99%)	546 (99%)	7 (1%)	69	56
1	B	554/560 (99%)	545 (98%)	9 (2%)	62	48
All	All	1107/1120 (99%)	1091 (99%)	16 (1%)	65	53

5 of 16 residues with a non-rotameric sidechain are listed below:

Mol	Chain	Res	Type
1	B	40	ARG
1	B	46	GLN
1	B	608	LYS
1	A	725	GLN
1	B	610	ARG

Some sidechains can be flipped to improve hydrogen bonding and reduce clashes. 5 of 8 such sidechains are listed below:

Mol	Chain	Res	Type
1	B	55	HIS
1	B	725	GLN
1	B	622	GLN
1	B	46	GLN
1	B	227	ASN

5.3.3 RNA ⓘ

There are no RNA molecules in this entry.

5.4 Non-standard residues in protein, DNA, RNA chains ⓘ

There are no non-standard protein/DNA/RNA residues in this entry.

5.5 Carbohydrates ⓘ

There are no carbohydrates in this entry.

5.6 Ligand geometry ⓘ

Of 17 ligands modelled in this entry, 4 are monoatomic - leaving 13 for Mogul analysis.

In the following table, the Counts columns list the number of bonds (or angles) for which Mogul statistics could be retrieved, the number of bonds (or angles) that are observed in the model and the number of bonds (or angles) that are defined in the Chemical Component Dictionary. The Link column lists molecule types, if any, to which the group is linked. The Z score for a bond length (or angle) is the number of standard deviations the observed value is removed from the expected value. A bond length (or angle) with $|Z| > 2$ is considered an outlier worth inspection. RMSZ is the root-mean-square of all Z scores of the bond lengths (or angles).

Mol	Type	Chain	Res	Link	Bond lengths			Bond angles		
					Counts	RMSZ	# $ Z > 2$	Counts	RMSZ	# $ Z > 2$
2	HEM	B	801	1,6	27,50,50	2.25	7 (25%)	17,82,82	3.13	8 (47%)
2	HEM	A	801	1,6	27,50,50	1.52	5 (18%)	17,82,82	2.43	7 (41%)
7	MPD	A	806	-	7,7,7	1.46	1 (14%)	9,10,10	1.47	2 (22%)
7	MPD	B	808	-	7,7,7	1.15	0	9,10,10	1.26	1 (11%)
7	MPD	B	807	-	7,7,7	0.66	0	9,10,10	1.35	2 (22%)
7	MPD	A	807	-	7,7,7	0.76	0	9,10,10	2.54	4 (44%)
5	OXY	B	804	-	1,1,1	0.13	0	-		
8	PO4	B	809	-	4,4,4	1.95	1 (25%)	6,6,6	3.97	3 (50%)
6	NIZ	A	805	2	10,10,10	3.47	6 (60%)	12,12,12	1.73	3 (25%)
6	NIZ	B	805	-	10,10,10	4.53	7 (70%)	12,12,12	4.07	8 (66%)
8	PO4	A	808	-	4,4,4	1.16	0	6,6,6	2.67	2 (33%)
6	NIZ	B	806	2	10,10,10	3.61	4 (40%)	12,12,12	2.99	7 (58%)
5	OXY	A	804	-	1,1,1	0.16	0	-		

In the following table, the Chirals column lists the number of chiral outliers, the number of chiral centers analysed, the number of these observed in the model and the number defined in the Chemical Component Dictionary. Similar counts are reported in the Torsion and Rings columns. '-' means no outliers of that kind were identified.

Mol	Type	Chain	Res	Link	Chirals	Torsions	Rings
2	HEM	B	801	1,6	-	0/6/54/54	-
2	HEM	A	801	1,6	-	0/6/54/54	-
7	MPD	B	808	-	-	2/5/5/5	-
7	MPD	B	807	-	-	3/5/5/5	-
7	MPD	A	807	-	-	2/5/5/5	-
7	MPD	A	806	-	-	2/5/5/5	-
6	NIZ	A	805	2	-	0/6/6/6	0/1/1/1
6	NIZ	B	805	-	-	1/6/6/6	0/1/1/1
6	NIZ	B	806	2	-	0/6/6/6	0/1/1/1

The worst 5 of 31 bond length outliers are listed below:

Mol	Chain	Res	Type	Atoms	Z	Observed(Å)	Ideal(Å)
6	B	805	NIZ	C4-N1	9.28	1.60	1.33
6	B	806	NIZ	C-N2	7.65	1.41	1.33
6	A	805	NIZ	C-N2	6.81	1.40	1.33
6	B	805	NIZ	C5-C1	6.51	1.50	1.39
2	B	801	HEM	C3B-C2B	-6.38	1.31	1.40

The worst 5 of 47 bond angle outliers are listed below:

Mol	Chain	Res	Type	Atoms	Z	Observed(°)	Ideal(°)
2	B	801	HEM	C1D-C2D-C3D	-8.37	101.17	107.00
6	B	805	NIZ	C1-C-N2	8.37	125.83	116.27
8	B	809	PO4	O3-P-O2	8.12	134.02	107.97
6	B	806	NIZ	C1-C-N2	7.38	124.70	116.27
2	A	801	HEM	CAA-CBA-CGA	-6.32	102.08	112.67

There are no chirality outliers.

5 of 10 torsion outliers are listed below:

Mol	Chain	Res	Type	Atoms
7	A	806	MPD	C2-C3-C4-O4
7	A	807	MPD	C2-C3-C4-C5
6	B	805	NIZ	C1-C-N2-N3
7	B	807	MPD	O2-C2-C3-C4
7	B	808	MPD	C2-C3-C4-C5

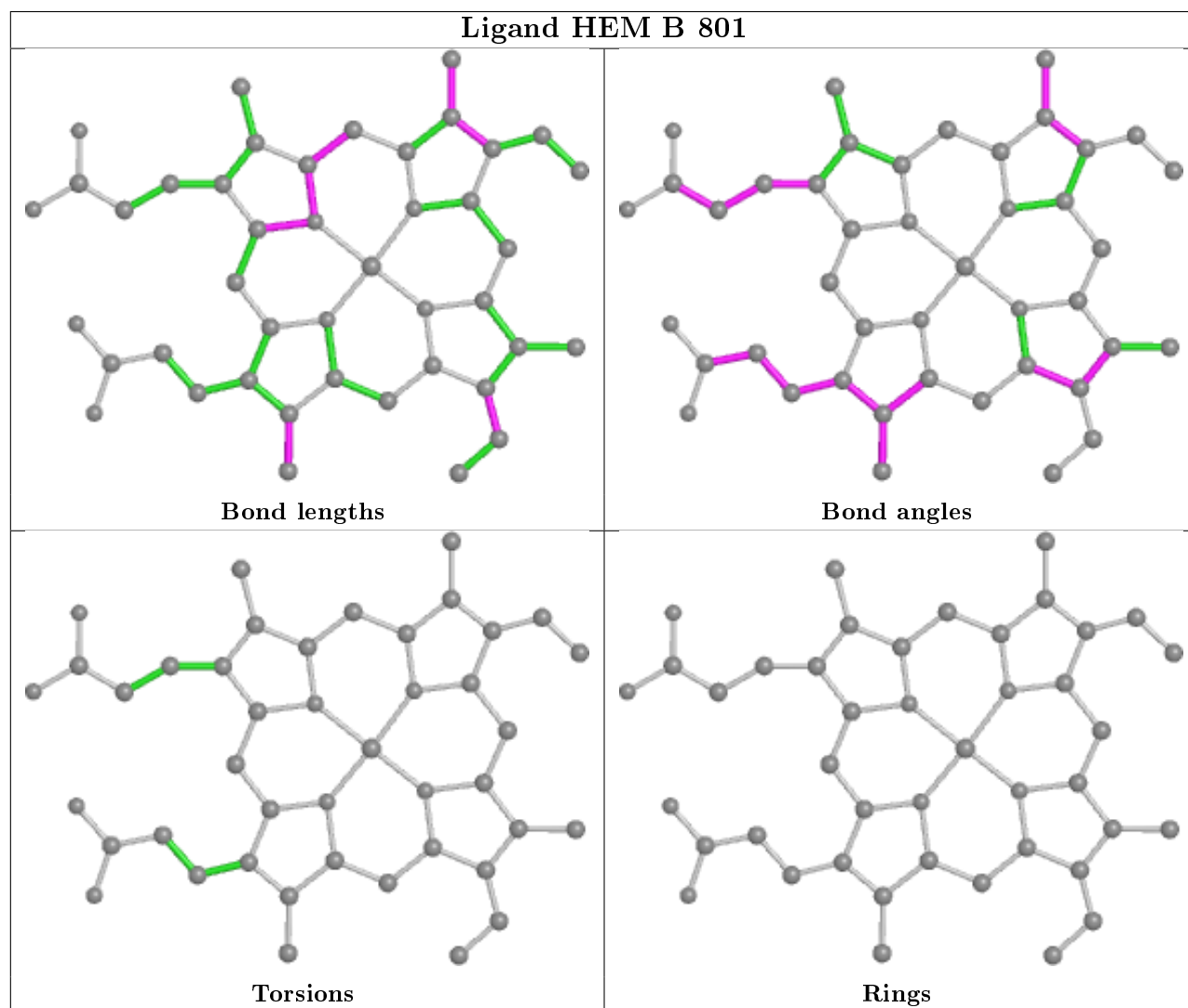
There are no ring outliers.

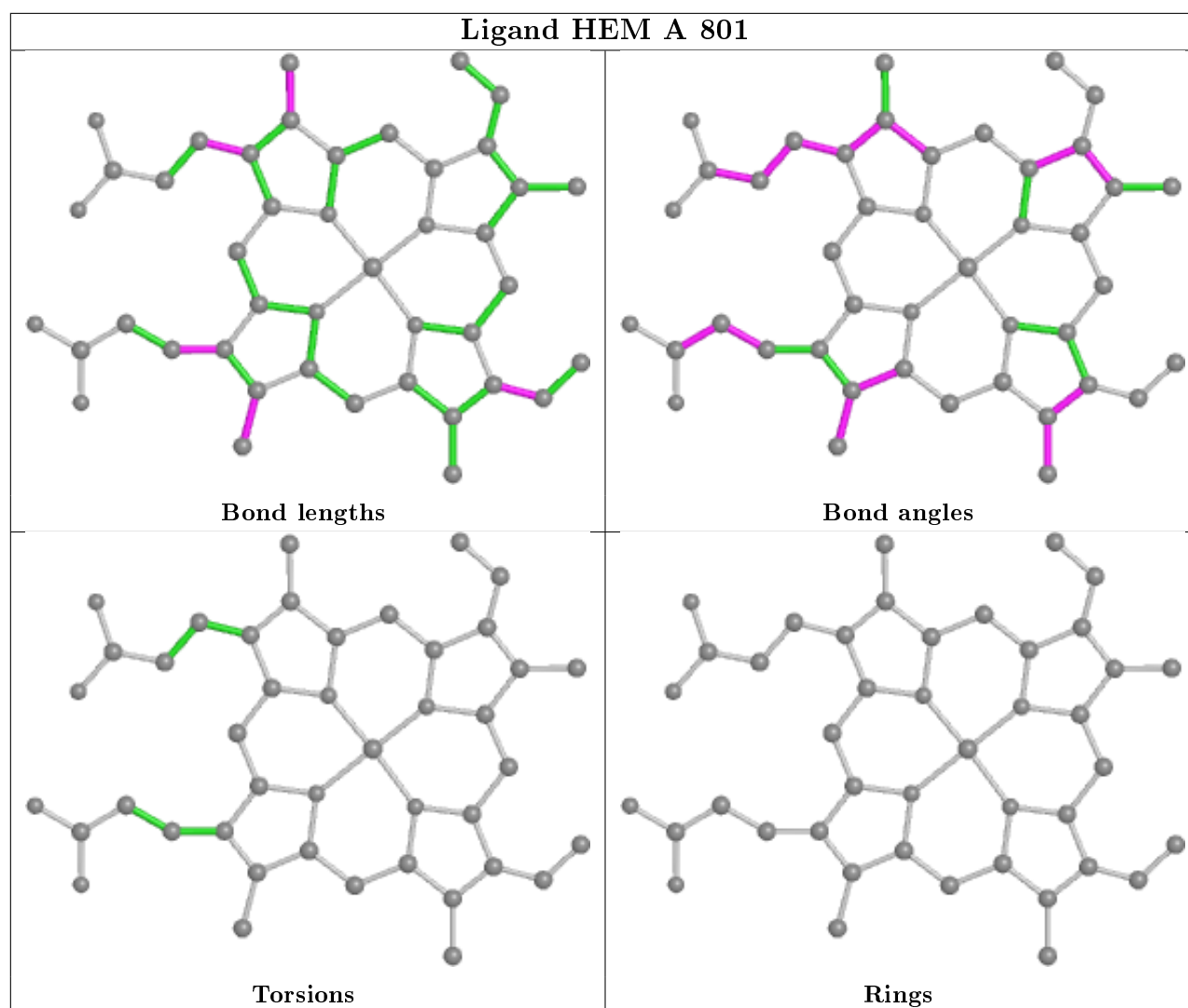
9 monomers are involved in 20 short contacts:

Mol	Chain	Res	Type	Clashes	Symm-Clashes
7	A	806	MPD	5	0
7	B	808	MPD	2	0
7	B	807	MPD	2	0
7	A	807	MPD	5	0
5	B	804	OXY	1	0
6	A	805	NIZ	2	0
6	B	805	NIZ	2	0
6	B	806	NIZ	2	0
5	A	804	OXY	1	0

The following is a two-dimensional graphical depiction of Mogul quality analysis of bond lengths, bond angles, torsion angles, and ring geometry for all instances of the Ligand of Interest. In addition, ligands with molecular weight > 250 and outliers as shown on the validation Tables will

also be included. For torsion angles, if less than 5% of the Mogul distribution of torsion angles is within 10 degrees of the torsion angle in question, then that torsion angle is considered an outlier. Any bond that is central to one or more torsion angles identified as an outlier by Mogul will be highlighted in the graph. For rings, the root-mean-square deviation (RMSD) between the ring in question and similar rings identified by Mogul is calculated over all ring torsion angles. If the average RMSD is greater than 60 degrees and the minimal RMSD between the ring in question and any Mogul-identified rings is also greater than 60 degrees, then that ring is considered an outlier. The outliers are highlighted in purple. The color gray indicates Mogul did not find sufficient equivalents in the CSD to analyse the geometry.





5.7 Other polymers [i](#)

There are no such residues in this entry.

5.8 Polymer linkage issues [i](#)

There are no chain breaks in this entry.

6 Fit of model and data [i](#)

6.1 Protein, DNA and RNA chains [i](#)

In the following table, the column labelled ‘#RSRZ> 2’ contains the number (and percentage) of RSRZ outliers, followed by percent RSRZ outliers for the chain as percentile scores relative to all X-ray entries and entries of similar resolution. The OWAB column contains the minimum, median, 95th percentile and maximum values of the occupancy-weighted average B-factor per residue. The column labelled ‘Q< 0.9’ lists the number of (and percentage) of residues with an average occupancy less than 0.9.

Mol	Chain	Analysed	<RSRZ>	#RSRZ>2	OWAB(Å ²)	Q<0.9
1	A	713/728 (97%)	-0.33	18 (2%) 57 61	12, 20, 37, 80	0
1	B	713/728 (97%)	-0.34	16 (2%) 62 66	12, 19, 37, 82	0
All	All	1426/1456 (97%)	-0.34	34 (2%) 59 63	12, 20, 37, 82	0

The worst 5 of 34 RSRZ outliers are listed below:

Mol	Chain	Res	Type	RSRZ
1	A	748	ALA	8.5
1	B	610	ARG	5.6
1	B	748	ALA	5.0
1	B	540	ARG	4.7
1	A	540	ARG	4.5

6.2 Non-standard residues in protein, DNA, RNA chains [i](#)

There are no non-standard protein/DNA/RNA residues in this entry.

6.3 Carbohydrates [i](#)

There are no carbohydrates in this entry.

6.4 Ligands [i](#)

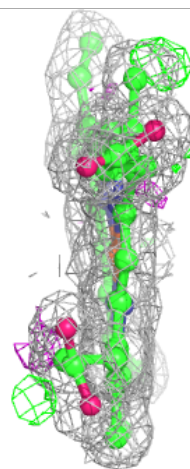
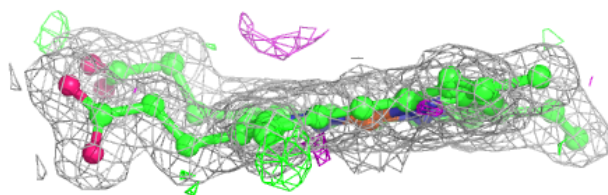
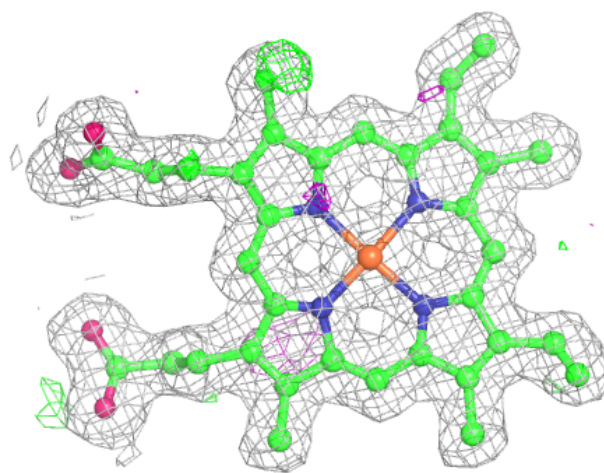
In the following table, the Atoms column lists the number of modelled atoms in the group and the number defined in the chemical component dictionary. The B-factors column lists the minimum, median, 95th percentile and maximum values of B factors of atoms in the group. The column labelled ‘Q< 0.9’ lists the number of atoms with occupancy less than 0.9.

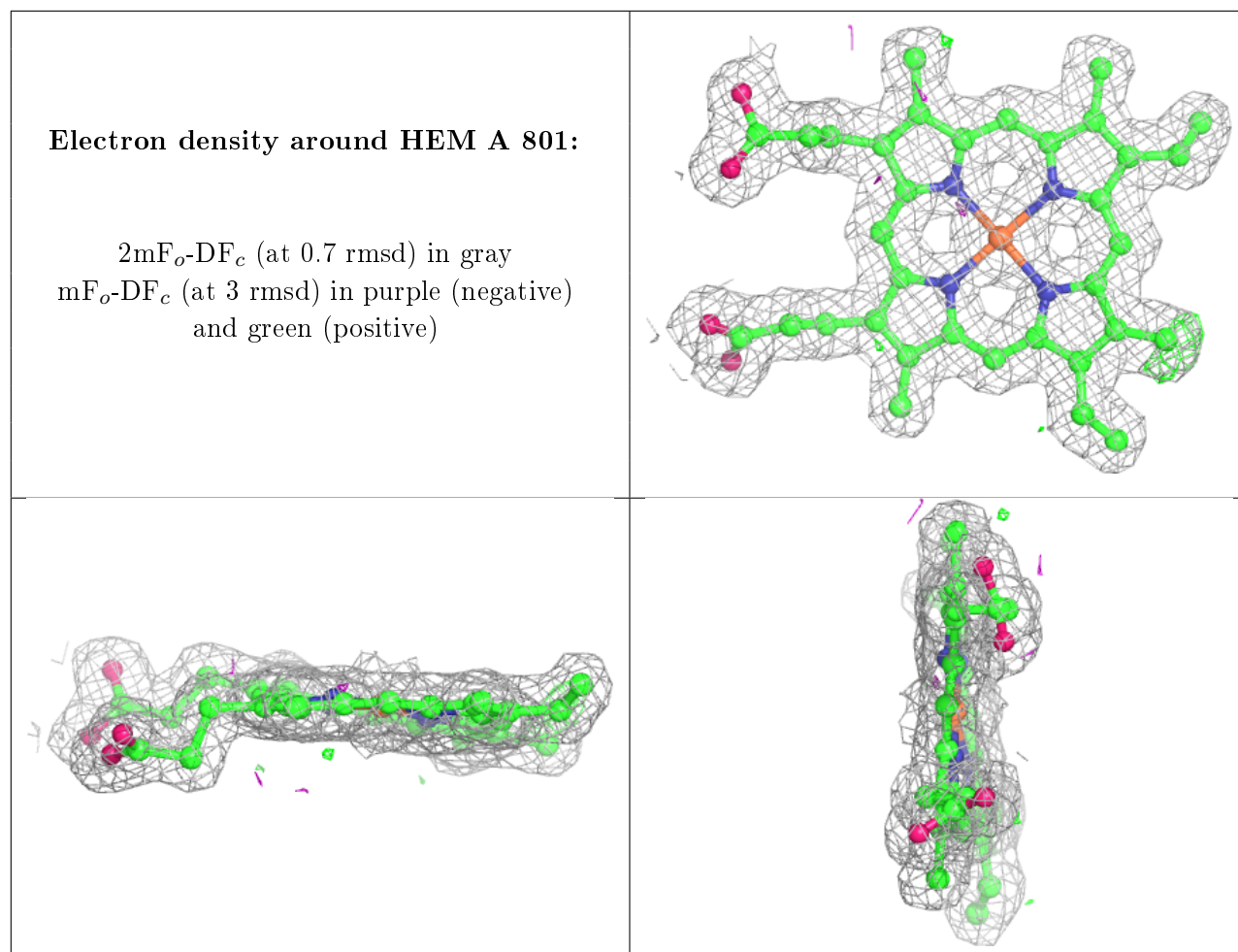
Mol	Type	Chain	Res	Atoms	RSCC	RSR	B-factors(\AA^2)	Q<0.9
6	NIZ	B	805	10/10	0.74	0.25	26,39,48,49	0
7	MPD	A	806	8/8	0.77	0.19	38,41,55,59	0
7	MPD	B	808	8/8	0.79	0.21	44,63,71,74	0
6	NIZ	B	806	10/10	0.88	0.14	26,30,34,35	0
6	NIZ	A	805	10/10	0.90	0.11	28,32,35,35	0
7	MPD	B	807	8/8	0.90	0.12	46,54,59,60	0
7	MPD	A	807	8/8	0.90	0.13	42,50,57,68	0
8	PO4	B	809	5/5	0.95	0.21	35,46,50,54	0
5	OXY	B	804	2/2	0.96	0.08	26,26,26,40	0
5	OXY	A	804	2/2	0.96	0.07	23,23,23,38	0
8	PO4	A	808	5/5	0.97	0.23	44,54,60,61	0
4	CL	B	803	1/1	0.98	0.05	31,31,31,31	0
3	NA	B	802	1/1	0.99	0.03	17,17,17,17	0
3	NA	A	802	1/1	0.99	0.03	16,16,16,16	0
4	CL	A	803	1/1	0.99	0.04	33,33,33,33	0
2	HEM	B	801	43/43	0.99	0.10	12,14,17,20	0
2	HEM	A	801	43/43	0.99	0.09	12,15,19,20	0

The following is a graphical depiction of the model fit to experimental electron density of all instances of the Ligand of Interest. In addition, ligands with molecular weight > 250 and outliers as shown on the geometry validation Tables will also be included. Each fit is shown from different orientation to approximate a three-dimensional view.

Electron density around HEM B 801:

$2mF_o-DF_c$ (at 0.7 rmsd) in gray
 mF_o-DF_c (at 3 rmsd) in purple (negative)
and green (positive)





6.5 Other polymers [i](#)

There are no such residues in this entry.