



Full wwPDB X-ray Structure Validation Report ⓘ

May 14, 2020 – 11:40 am BST

PDB ID : 6SYP
Title : Human DHODH bound to inhibitor IPP/CNRS-A017
Authors : Kraemer, A.; Janin, Y.; Arrowsmith, C.H.; Edwards, A.M.; Bountra, C.;
Knapp, S.; Structural Genomics Consortium (SGC)
Deposited on : 2019-09-30
Resolution : 1.80 Å(reported)

This is a Full wwPDB X-ray Structure Validation Report for a publicly released PDB entry.

We welcome your comments at validation@mail.wwpdb.org

A user guide is available at

<https://www.wwpdb.org/validation/2017/XrayValidationReportHelp>

with specific help available everywhere you see the ⓘ symbol.

The following versions of software and data (see [references ⓘ](#)) were used in the production of this report:

MolProbity : 4.02b-467
Mogul : 1.8.5 (274361), CSD as541be (2020)
Xtriage (Phenix) : 1.13
EDS : 2.11
buster-report : 1.1.7 (2018)
Percentile statistics : 20191225.v01 (using entries in the PDB archive December 25th 2019)
Refmac : 5.8.0158
CCP4 : 7.0.044 (Gargrove)
Ideal geometry (proteins) : Engh & Huber (2001)
Ideal geometry (DNA, RNA) : Parkinson et al. (1996)
Validation Pipeline (wwPDB-VP) : 2.11

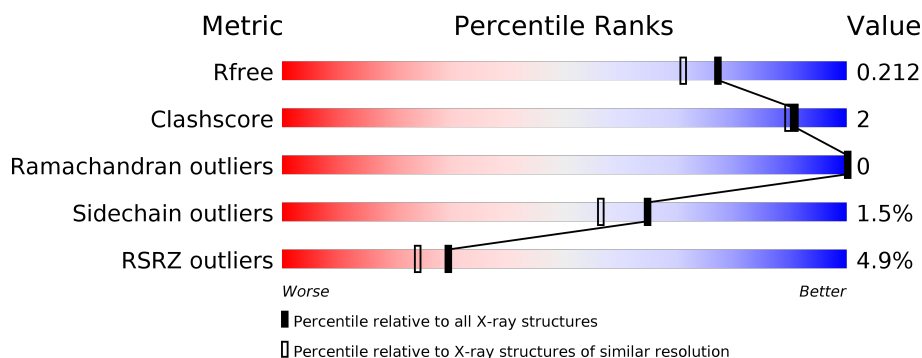
1 Overall quality at a glance

The following experimental techniques were used to determine the structure:

X-RAY DIFFRACTION

The reported resolution of this entry is 1.80 Å.

Percentile scores (ranging between 0-100) for global validation metrics of the entry are shown in the following graphic. The table shows the number of entries on which the scores are based.



Metric	Whole archive (#Entries)	Similar resolution (#Entries, resolution range(Å))
R_{free}	130704	5950 (1.80-1.80)
Clashscore	141614	6793 (1.80-1.80)
Ramachandran outliers	138981	6697 (1.80-1.80)
Sidechain outliers	138945	6696 (1.80-1.80)
RSRZ outliers	127900	5850 (1.80-1.80)

The table below summarises the geometric issues observed across the polymeric chains and their fit to the electron density. The red, orange, yellow and green segments on the lower bar indicate the fraction of residues that contain outliers for ≥ 3 , 2, 1 and 0 types of geometric quality criteria respectively. A grey segment represents the fraction of residues that are not modelled. The numeric value for each fraction is indicated below the corresponding segment, with a dot representing fractions $\leq 5\%$. The upper red bar (where present) indicates the fraction of residues that have poor fit to the electron density. The numeric value is given above the bar.

Mol	Chain	Length	Quality of chain
1	AAA	395	<div> <div>4%</div> <div>83%</div> <div>5%</div> <div>12%</div> </div>

2 Entry composition [i](#)

There are 6 unique types of molecules in this entry. The entry contains 2846 atoms, of which 0 are hydrogens and 0 are deuteriums.

In the tables below, the ZeroOcc column contains the number of atoms modelled with zero occupancy, the AltConf column contains the number of residues with at least one atom in alternate conformation and the Trace column contains the number of residues modelled with at most 2 atoms.

- Molecule 1 is a protein called Dihydroorotate dehydrogenase.

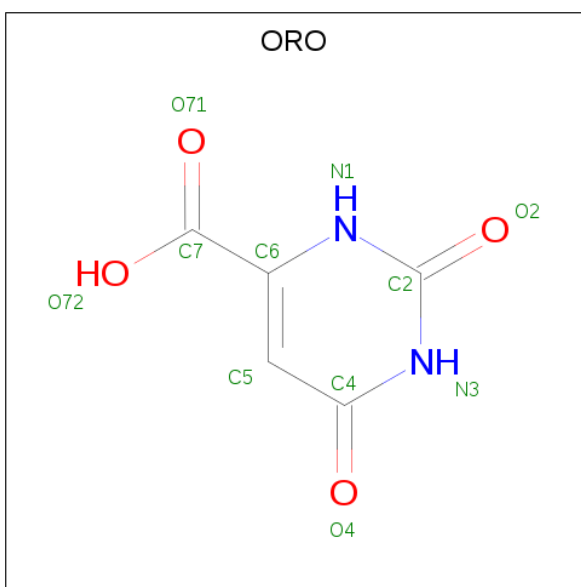
Mol	Chain	Residues	Atoms					ZeroOcc	AltConf	Trace
1	AAA	347	Total	C	N	O	S	0	2	0
			2624	1651	483	487	3			

- Molecule 2 is FLAVIN MONONUCLEOTIDE (three-letter code: FMN) (formula: $C_{17}H_{21}N_4O_9P$).



Mol	Chain	Residues	Atoms					ZeroOcc	AltConf
2	AAA	1	Total	C	N	O	P	0	0
			31	17	4	9	1		

- Molecule 3 is OROTIC ACID (three-letter code: ORO) (formula: $C_5H_4N_2O_4$).



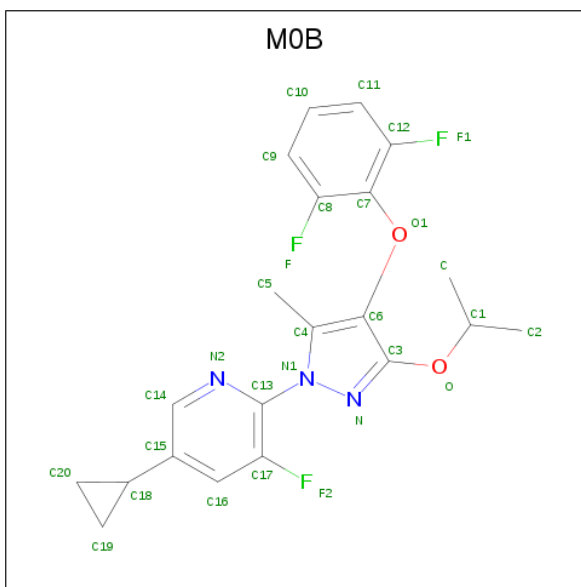
Mol	Chain	Residues	Atoms				ZeroOcc	AltConf
3	AAA	1	Total	C	N	O	0	0
			11	5	2	4		

- Molecule 4 is SULFATE ION (three-letter code: SO4) (formula: O₄S).



Mol	Chain	Residues	Atoms			ZeroOcc	AltConf
4	AAA	1	Total	O	S	0	0
			5	4	1		

- Molecule 5 is 2-[4-[2,6-bis(fluoranyl)phenoxy]-5-methyl-3-propan-2-yloxy-pyrazol-1-yl]-5-cyclopropyl-3-fluoranyl-pyridine (three-letter code: M0B) (formula: C₂₁H₂₀F₃N₃O₂) (labeled as "Ligand of Interest" by author).



Mol	Chain	Residues	Atoms					ZeroOcc	AltConf
5	AAA	1	Total	C	F	N	O	0	0
			29	21	3	3	2		

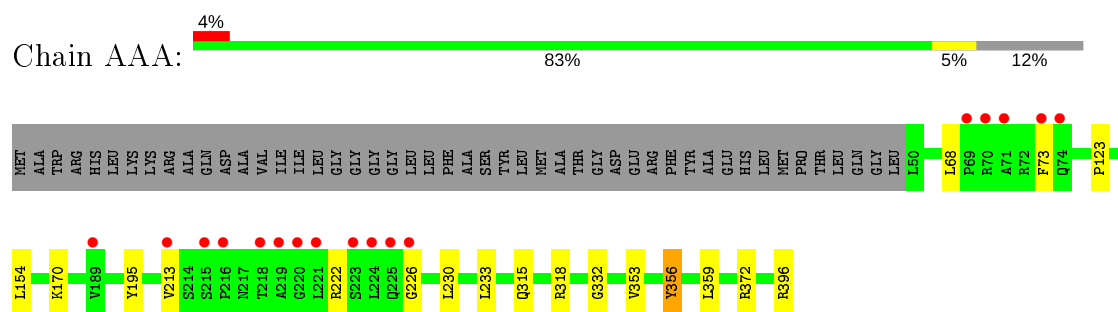
- Molecule 6 is water.

Mol	Chain	Residues	Atoms		ZeroOcc	AltConf
6	AAA	146	Total	O	0	0
			146	146		

3 Residue-property plots [i](#)

These plots are drawn for all protein, RNA and DNA chains in the entry. The first graphic for a chain summarises the proportions of the various outlier classes displayed in the second graphic. The second graphic shows the sequence view annotated by issues in geometry and electron density. Residues are color-coded according to the number of geometric quality criteria for which they contain at least one outlier: green = 0, yellow = 1, orange = 2 and red = 3 or more. A red dot above a residue indicates a poor fit to the electron density ($RSRZ > 2$). Stretches of 2 or more consecutive residues without any outlier are shown as a green connector. Residues present in the sample, but not in the model, are shown in grey.

- Molecule 1: Dihydroorotate dehydrogenase



4 Data and refinement statistics

Property	Value	Source
Space group	P 32 2 1	Depositor
Cell constants a, b, c, α , β , γ	90.56 Å 90.56 Å 122.39 Å 90.00° 90.00° 120.00°	Depositor
Resolution (Å)	48.25 – 1.80 48.25 – 1.80	Depositor EDS
% Data completeness (in resolution range)	99.9 (48.25-1.80) 99.9 (48.25-1.80)	Depositor EDS
R_{merge}	(Not available)	Depositor
R_{sym}	(Not available)	Depositor
$\langle I/\sigma(I) \rangle$ ¹	1.97 (at 1.79 Å)	Xtriage
Refinement program	REFMAC 5.8.0253	Depositor
R, R_{free}	0.182 , 0.203 0.192 , 0.212	Depositor DCC
R_{free} test set	2621 reflections (4.82%)	wwPDB-VP
Wilson B-factor (Å ²)	26.1	Xtriage
Anisotropy	0.288	Xtriage
Bulk solvent k_{sol} (e/Å ³), B_{sol} (Å ²)	0.43 , 51.0	EDS
L-test for twinning ²	$\langle L \rangle = 0.50$, $\langle L^2 \rangle = 0.33$	Xtriage
Estimated twinning fraction	0.023 for -h,-k,l	Xtriage
F_o, F_c correlation	0.96	EDS
Total number of atoms	2846	wwPDB-VP
Average B, all atoms (Å ²)	31.0	wwPDB-VP

Xtriage's analysis on translational NCS is as follows: *The largest off-origin peak in the Patterson function is 3.65% of the height of the origin peak. No significant pseudotranslation is detected.*

¹Intensities estimated from amplitudes.

²Theoretical values of $\langle |L| \rangle$, $\langle L^2 \rangle$ for acentric reflections are 0.5, 0.333 respectively for untwinned datasets, and 0.375, 0.2 for perfectly twinned datasets.

5 Model quality

5.1 Standard geometry

Bond lengths and bond angles in the following residue types are not validated in this section: FMN, ORO, M0B, SO4

The Z score for a bond length (or angle) is the number of standard deviations the observed value is removed from the expected value. A bond length (or angle) with $|Z| > 5$ is considered an outlier worth inspection. RMSZ is the root-mean-square of all Z scores of the bond lengths (or angles).

Mol	Chain	Bond lengths		Bond angles	
		RMSZ	$\# Z > 5$	RMSZ	$\# Z > 5$
1	AAA	0.65	0/2672	0.75	0/3615

There are no bond length outliers.

There are no bond angle outliers.

There are no chirality outliers.

There are no planarity outliers.

5.2 Too-close contacts

In the following table, the Non-H and H(model) columns list the number of non-hydrogen atoms and hydrogen atoms in the chain respectively. The H(added) column lists the number of hydrogen atoms added and optimized by MolProbity. The Clashes column lists the number of clashes within the asymmetric unit, whereas Symm-Clashes lists symmetry related clashes.

Mol	Chain	Non-H	H(model)	H(added)	Clashes	Symm-Clashes
1	AAA	2624	0	2683	9	0
2	AAA	31	0	19	0	0
3	AAA	11	0	3	0	0
4	AAA	5	0	0	0	0
5	AAA	29	0	0	0	0
6	AAA	146	0	0	0	0
All	All	2846	0	2705	9	0

The all-atom clashscore is defined as the number of clashes found per 1000 atoms (including hydrogen atoms). The all-atom clashscore for this structure is 2.

All (9) close contacts within the same asymmetric unit are listed below, sorted by their clash magnitude.

Atom-1	Atom-2	Interatomic distance (Å)	Clash overlap (Å)
1:AAA:315:GLN:HE22	1:AAA:318:ARG:HE	1.45	0.63
1:AAA:315:GLN:NE2	1:AAA:318:ARG:HE	2.08	0.50
1:AAA:195:TYR:CD2	1:AAA:233:LEU:HD11	2.50	0.47
1:AAA:332:GLY:O	1:AAA:353:VAL:HA	2.16	0.45
1:AAA:123:PRO:HA	1:AAA:154:LEU:HG	2.00	0.43
1:AAA:356:TYR:O	1:AAA:359:LEU:HB2	2.18	0.43
1:AAA:213:VAL:O	1:AAA:222:ARG:HA	2.20	0.41
1:AAA:73:PHE:CE1	1:AAA:372:ARG:HG2	2.54	0.41
1:AAA:226:GLY:O	1:AAA:230:LEU:HB2	2.21	0.41

There are no symmetry-related clashes.

5.3 Torsion angles [i](#)

5.3.1 Protein backbone [i](#)

In the following table, the Percentiles column shows the percent Ramachandran outliers of the chain as a percentile score with respect to all X-ray entries followed by that with respect to entries of similar resolution.

The Analysed column shows the number of residues for which the backbone conformation was analysed, and the total number of residues.

Mol	Chain	Analysed	Favoured	Allowed	Outliers	Percentiles	
1	AAA	347/395 (88%)	339 (98%)	8 (2%)	0	100	100

There are no Ramachandran outliers to report.

5.3.2 Protein sidechains [i](#)

In the following table, the Percentiles column shows the percent sidechain outliers of the chain as a percentile score with respect to all X-ray entries followed by that with respect to entries of similar resolution.

The Analysed column shows the number of residues for which the sidechain conformation was analysed, and the total number of residues.

Mol	Chain	Analysed	Rotameric	Outliers	Percentiles	
1	AAA	274/316 (87%)	270 (98%)	4 (2%)	65	56

All (4) residues with a non-rotameric sidechain are listed below:

Mol	Chain	Res	Type
1	AAA	68	LEU
1	AAA	170	LYS
1	AAA	356	TYR
1	AAA	396	ARG

Some sidechains can be flipped to improve hydrogen bonding and reduce clashes. There are no such sidechains identified.

5.3.3 RNA ⓘ

There are no RNA molecules in this entry.

5.4 Non-standard residues in protein, DNA, RNA chains ⓘ

There are no non-standard protein/DNA/RNA residues in this entry.

5.5 Carbohydrates ⓘ

There are no carbohydrates in this entry.

5.6 Ligand geometry ⓘ

4 ligands are modelled in this entry.

In the following table, the Counts columns list the number of bonds (or angles) for which Mogul statistics could be retrieved, the number of bonds (or angles) that are observed in the model and the number of bonds (or angles) that are defined in the Chemical Component Dictionary. The Link column lists molecule types, if any, to which the group is linked. The Z score for a bond length (or angle) is the number of standard deviations the observed value is removed from the expected value. A bond length (or angle) with $|Z| > 2$ is considered an outlier worth inspection. RMSZ is the root-mean-square of all Z scores of the bond lengths (or angles).

Mol	Type	Chain	Res	Link	Bond lengths			Bond angles		
					Counts	RMSZ	$\# Z > 2$	Counts	RMSZ	$\# Z > 2$
2	FMN	AAA	401	-	31,33,33	2.23	5 (16%)	40,50,50	2.44	9 (22%)
3	ORO	AAA	402	-	6,11,11	1.47	1 (16%)	3,15,15	5.37	2 (66%)
5	M0B	AAA	404	-	30,32,32	0.60	0	32,47,47	0.78	1 (3%)
4	SO4	AAA	403	-	4,4,4	0.40	0	6,6,6	0.07	0

In the following table, the Chirals column lists the number of chiral outliers, the number of chiral centers analysed, the number of these observed in the model and the number defined in the

Chemical Component Dictionary. Similar counts are reported in the Torsion and Rings columns.
'-' means no outliers of that kind were identified.

Mol	Type	Chain	Res	Link	Chirals	Torsions	Rings
2	FMN	AAA	401	-	-	6/18/18/18	0/3/3/3
3	ORO	AAA	402	-	-	0/0/4/4	0/1/1/1
5	M0B	AAA	404	-	-	0/8/18/18	0/4/4/4

All (6) bond length outliers are listed below:

Mol	Chain	Res	Type	Atoms	Z	Observed(Å)	Ideal(Å)
2	AAA	401	FMN	C4A-C10	9.52	1.48	1.38
2	AAA	401	FMN	C4-C4A	4.22	1.48	1.41
2	AAA	401	FMN	C9A-C5A	3.13	1.48	1.42
3	AAA	402	ORO	C4-N3	3.10	1.38	1.33
2	AAA	401	FMN	C8-C7	2.96	1.48	1.40
2	AAA	401	FMN	C9A-N10	2.56	1.42	1.38

All (12) bond angle outliers are listed below:

Mol	Chain	Res	Type	Atoms	Z	Observed(°)	Ideal(°)
2	AAA	401	FMN	C4-N3-C2	9.52	123.18	115.14
3	AAA	402	ORO	C5-C4-N3	-7.83	114.94	124.08
2	AAA	401	FMN	C4-C4A-C10	-6.66	115.54	119.95
3	AAA	402	ORO	C4-C5-C6	4.85	119.86	116.73
2	AAA	401	FMN	C1'-N10-C9A	4.67	121.97	118.29
2	AAA	401	FMN	C4A-C4-N3	-4.07	117.87	123.43
2	AAA	401	FMN	C4A-N5-C5A	3.92	120.69	116.77
2	AAA	401	FMN	C4-C4A-N5	3.51	122.60	118.60
2	AAA	401	FMN	C5A-C9A-N10	2.78	119.73	117.72
5	AAA	404	M0B	C16-C17-C13	-2.61	120.06	121.73
2	AAA	401	FMN	P-O5'-C5'	2.24	124.46	118.30
2	AAA	401	FMN	C9A-N10-C10	-2.01	119.28	121.91

There are no chirality outliers.

All (6) torsion outliers are listed below:

Mol	Chain	Res	Type	Atoms
2	AAA	401	FMN	C2'-C3'-C4'-O4'
2	AAA	401	FMN	O3'-C3'-C4'-O4'
2	AAA	401	FMN	C4'-C5'-O5'-P
2	AAA	401	FMN	O3'-C3'-C4'-C5'
2	AAA	401	FMN	C5'-O5'-P-O1P

Continued on next page...

Continued from previous page...

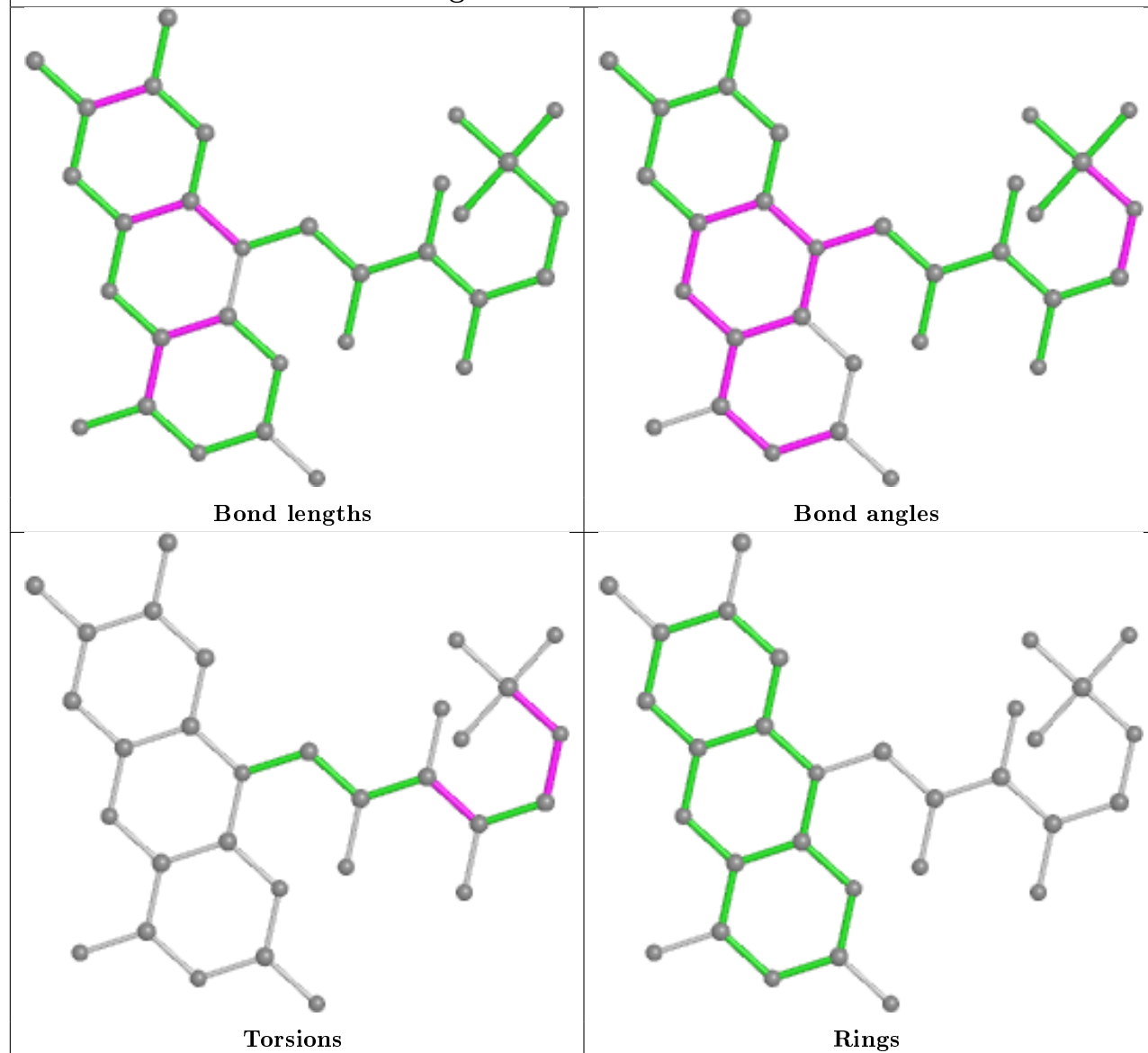
Mol	Chain	Res	Type	Atoms
2	AAA	401	FMN	C2'-C3'-C4'-C5'

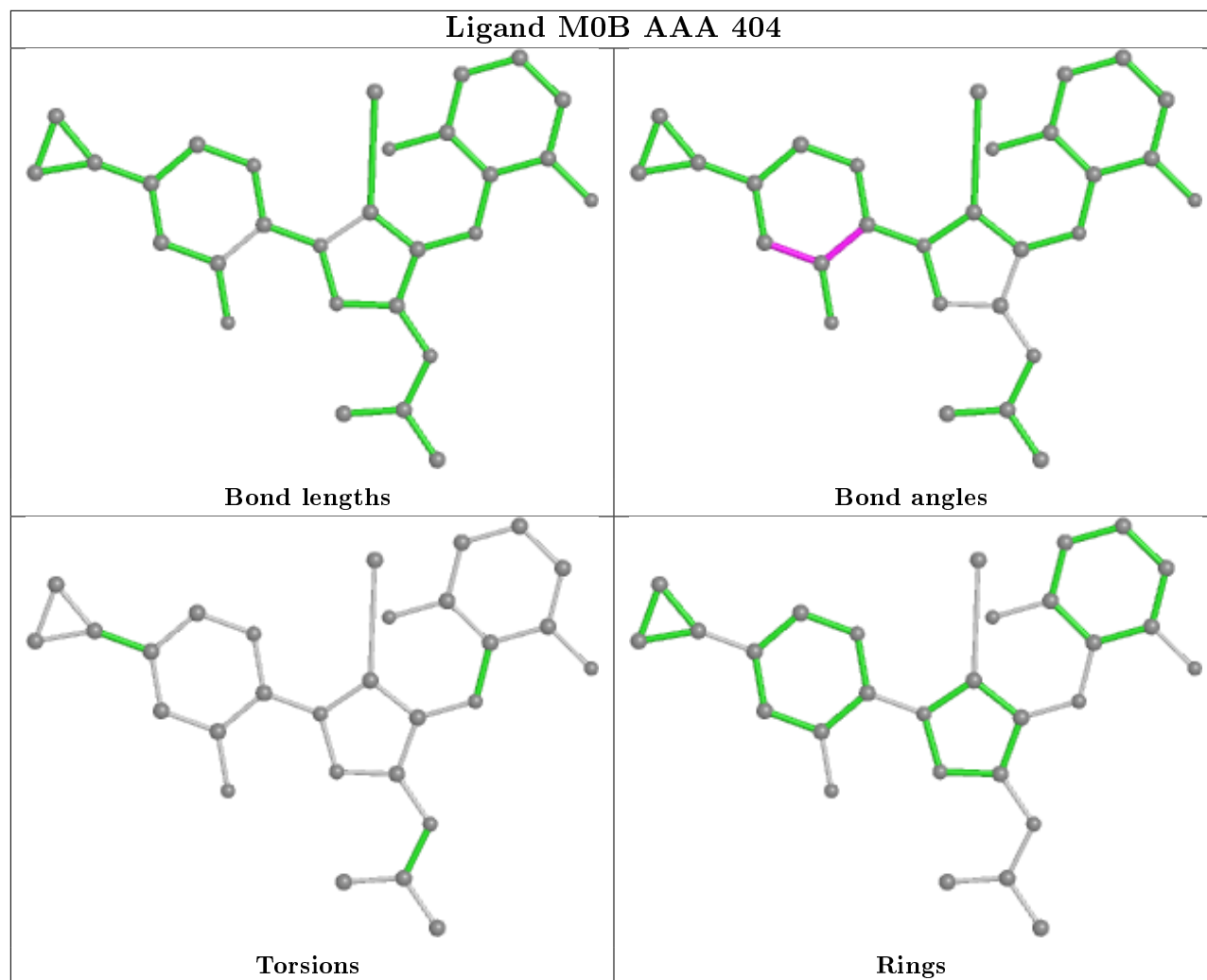
There are no ring outliers.

No monomer is involved in short contacts.

The following is a two-dimensional graphical depiction of Mogul quality analysis of bond lengths, bond angles, torsion angles, and ring geometry for all instances of the Ligand of Interest. In addition, ligands with molecular weight > 250 and outliers as shown on the validation Tables will also be included. For torsion angles, if less than 5% of the Mogul distribution of torsion angles is within 10 degrees of the torsion angle in question, then that torsion angle is considered an outlier. Any bond that is central to one or more torsion angles identified as an outlier by Mogul will be highlighted in the graph. For rings, the root-mean-square deviation (RMSD) between the ring in question and similar rings identified by Mogul is calculated over all ring torsion angles. If the average RMSD is greater than 60 degrees and the minimal RMSD between the ring in question and any Mogul-identified rings is also greater than 60 degrees, then that ring is considered an outlier. The outliers are highlighted in purple. The color gray indicates Mogul did not find sufficient equivalents in the CSD to analyse the geometry.

Ligand FMN AAA 401





5.7 Other polymers [i](#)

There are no such residues in this entry.

5.8 Polymer linkage issues [i](#)

There are no chain breaks in this entry.

6 Fit of model and data [i](#)

6.1 Protein, DNA and RNA chains [i](#)

In the following table, the column labelled ‘#RSRZ> 2’ contains the number (and percentage) of RSRZ outliers, followed by percent RSRZ outliers for the chain as percentile scores relative to all X-ray entries and entries of similar resolution. The OWAB column contains the minimum, median, 95th percentile and maximum values of the occupancy-weighted average B-factor per residue. The column labelled ‘Q< 0.9’ lists the number of (and percentage) of residues with an average occupancy less than 0.9.

Mol	Chain	Analysed	<RSRZ>	#RSRZ>2	OWAB(Å ²)	Q<0.9
1	AAA	347/395 (87%)	-0.09	17 (4%) 29 24	20, 28, 55, 80	0

All (17) RSRZ outliers are listed below:

Mol	Chain	Res	Type	RSRZ
1	AAA	219	ALA	6.4
1	AAA	73	PHE	5.6
1	AAA	71	ALA	5.5
1	AAA	224	LEU	4.6
1	AAA	213	VAL	4.1
1	AAA	221	LEU	4.0
1	AAA	223	SER	3.8
1	AAA	226	GLY	3.7
1	AAA	70	ARG	3.7
1	AAA	225	GLN	3.2
1	AAA	215	SER	3.2
1	AAA	69	PRO	3.0
1	AAA	189	VAL	3.0
1	AAA	218	THR	2.9
1	AAA	74	GLN	2.6
1	AAA	220	GLY	2.5
1	AAA	216	PRO	2.0

6.2 Non-standard residues in protein, DNA, RNA chains [i](#)

There are no non-standard protein/DNA/RNA residues in this entry.

6.3 Carbohydrates [i](#)

There are no carbohydrates in this entry.

6.4 Ligands [i](#)

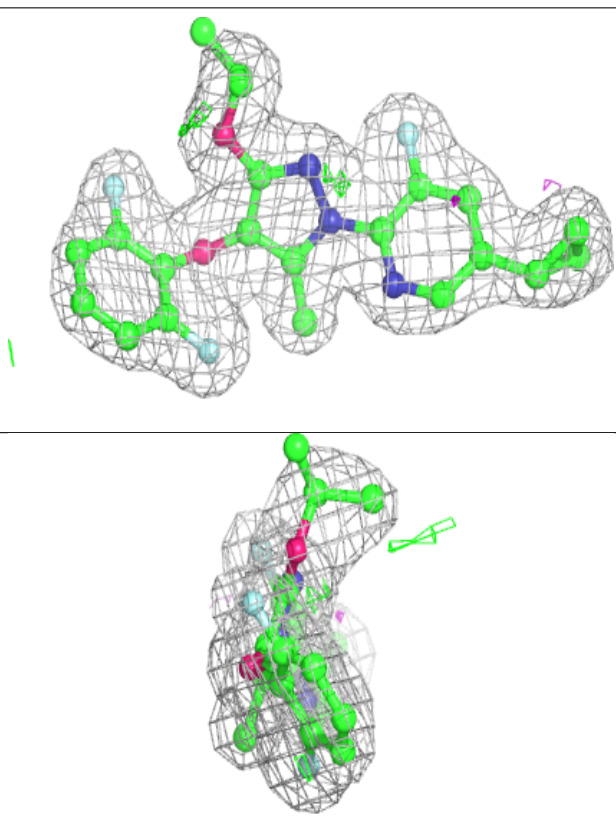
In the following table, the Atoms column lists the number of modelled atoms in the group and the number defined in the chemical component dictionary. The B-factors column lists the minimum, median, 95th percentile and maximum values of B factors of atoms in the group. The column labelled 'Q<0.9' lists the number of atoms with occupancy less than 0.9.

Mol	Type	Chain	Res	Atoms	RSCC	RSR	B-factors(\AA^2)	Q<0.9
5	M0B	AAA	404	29/29	0.94	0.11	28,33,41,43	0
3	ORO	AAA	402	11/11	0.97	0.06	22,23,24,25	0
2	FMN	AAA	401	31/31	0.98	0.08	19,20,21,22	0
4	SO4	AAA	403	5/5	0.99	0.05	47,48,49,49	0

The following is a graphical depiction of the model fit to experimental electron density of all instances of the Ligand of Interest. In addition, ligands with molecular weight > 250 and outliers as shown on the geometry validation Tables will also be included. Each fit is shown from different orientation to approximate a three-dimensional view.

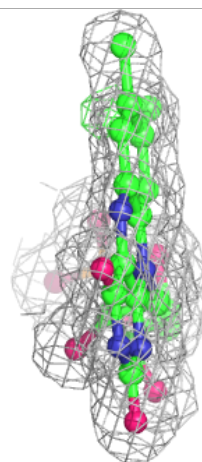
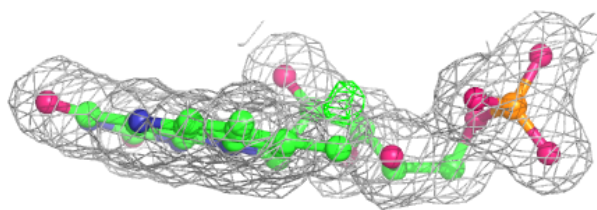
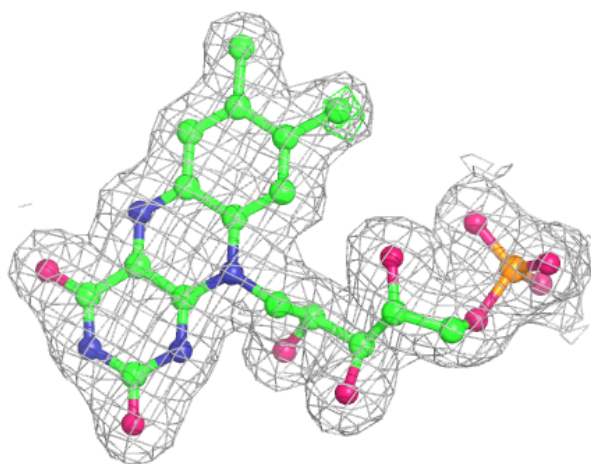
Electron density around M0B AAA 404:

2mF_o-DF_c (at 0.7 rmsd) in gray
mF_o-DF_c (at 3 rmsd) in purple (negative)
and green (positive)



Electron density around FMN AAA 401:

$2mF_o-DF_c$ (at 0.7 rmsd) in gray
 mF_o-DF_c (at 3 rmsd) in purple (negative)
and green (positive)



6.5 Other polymers [i](#)

There are no such residues in this entry.