



Full wwPDB X-ray Structure Validation Report ⓘ

Jun 13, 2020 – 10:04 pm BST

PDB ID : 5T02
Title : Structural characterisation of mutant Asp39Ala of thioesterase (NmACH) from *Neisseria meningitidis*
Authors : Khandokar, Y.B.; Srivastava, P.; Forwood, J.K.
Deposited on : 2016-08-15
Resolution : 2.80 Å(reported)

This is a Full wwPDB X-ray Structure Validation Report for a publicly released PDB entry.

We welcome your comments at validation@mail.wwpdb.org

A user guide is available at

<https://www.wwpdb.org/validation/2017/XrayValidationReportHelp>

with specific help available everywhere you see the ⓘ symbol.

The following versions of software and data (see [references ⓘ](#)) were used in the production of this report:

MolProbity : 4.02b-467
Mogul : 1.8.5 (274361), CSD as541be (2020)
Xtriage (Phenix) : 1.13
EDS : 2.11
buster-report : 1.1.7 (2018)
Percentile statistics : 20191225.v01 (using entries in the PDB archive December 25th 2019)
Refmac : 5.8.0158
CCP4 : 7.0.044 (Gargrove)
Ideal geometry (proteins) : Engh & Huber (2001)
Ideal geometry (DNA, RNA) : Parkinson et al. (1996)
Validation Pipeline (wwPDB-VP) : 2.11

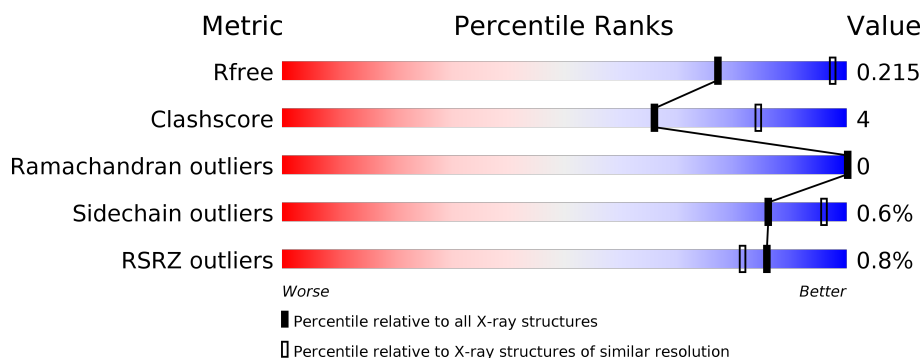
1 Overall quality at a glance

The following experimental techniques were used to determine the structure:

X-RAY DIFFRACTION

The reported resolution of this entry is 2.80 Å.

Percentile scores (ranging between 0-100) for global validation metrics of the entry are shown in the following graphic. The table shows the number of entries on which the scores are based.



Metric	Whole archive (#Entries)	Similar resolution (#Entries, resolution range(Å))
R_{free}	130704	3140 (2.80-2.80)
Clashscore	141614	3569 (2.80-2.80)
Ramachandran outliers	138981	3498 (2.80-2.80)
Sidechain outliers	138945	3500 (2.80-2.80)
RSRZ outliers	127900	3078 (2.80-2.80)

The table below summarises the geometric issues observed across the polymeric chains and their fit to the electron density. The red, orange, yellow and green segments on the lower bar indicate the fraction of residues that contain outliers for ≥ 3 , 2, 1 and 0 types of geometric quality criteria respectively. A grey segment represents the fraction of residues that are not modelled. The numeric value for each fraction is indicated below the corresponding segment, with a dot representing fractions $\leq 5\%$. The upper red bar (where present) indicates the fraction of residues that have poor fit to the electron density. The numeric value is given above the bar.

Mol	Chain	Length	Quality of chain
1	A	160	<div> <div>89%</div> <div>9%</div> </div>
1	B	160	<div> <div>81%</div> <div>11%</div> <div>8%</div> </div>
1	C	160	<div> <div>86%</div> <div>8%</div> <div>6%</div> </div>
1	D	160	<div> <div>89%</div> <div>8%</div> </div>
1	E	160	<div> <div>81%</div> <div>11%</div> <div>8%</div> </div>
1	F	160	<div> <div>3%</div> <div>80%</div> <div>9%</div> <div>9%</div> </div>

2 Entry composition

There are 4 unique types of molecules in this entry. The entry contains 7407 atoms, of which 0 are hydrogens and 0 are deuteriums.

In the tables below, the ZeroOcc column contains the number of atoms modelled with zero occupancy, the AltConf column contains the number of residues with at least one atom in alternate conformation and the Trace column contains the number of residues modelled with at most 2 atoms.

- Molecule 1 is a protein called Acyl-CoA hydrolase.

Mol	Chain	Residues	Atoms					ZeroOcc	AltConf	Trace
1	A	146	Total	C	N	O	S	0	0	0
			1150	725	204	212	9			
1	B	147	Total	C	N	O	S	0	0	0
			1150	725	202	214	9			
1	C	150	Total	C	N	O	S	0	0	0
			1179	741	209	220	9			
1	D	148	Total	C	N	O	S	0	0	0
			1168	735	208	216	9			
1	E	147	Total	C	N	O	S	0	0	0
			1159	730	206	214	9			
1	F	145	Total	C	N	O	S	0	0	0
			1139	719	200	211	9			

There are 24 discrepancies between the modelled and reference sequences:

Chain	Residue	Modelled	Actual	Comment	Reference
A	-2	SER	-	expression tag	UNP A0A0Y5D4F5
A	-1	ASN	-	expression tag	UNP A0A0Y5D4F5
A	0	ALA	-	expression tag	UNP A0A0Y5D4F5
A	39	ALA	ASP	engineered mutation	UNP A0A0Y5D4F5
B	-2	SER	-	expression tag	UNP A0A0Y5D4F5
B	-1	ASN	-	expression tag	UNP A0A0Y5D4F5
B	0	ALA	-	expression tag	UNP A0A0Y5D4F5
B	39	ALA	ASP	engineered mutation	UNP A0A0Y5D4F5
C	-2	SER	-	expression tag	UNP A0A0Y5D4F5
C	-1	ASN	-	expression tag	UNP A0A0Y5D4F5
C	0	ALA	-	expression tag	UNP A0A0Y5D4F5
C	39	ALA	ASP	engineered mutation	UNP A0A0Y5D4F5
D	-2	SER	-	expression tag	UNP A0A0Y5D4F5
D	-1	ASN	-	expression tag	UNP A0A0Y5D4F5
D	0	ALA	-	expression tag	UNP A0A0Y5D4F5
D	39	ALA	ASP	engineered mutation	UNP A0A0Y5D4F5
E	-2	SER	-	expression tag	UNP A0A0Y5D4F5

Continued on next page...

Chain	Residue	Modelled	Actual	Comment	Reference
E	-1	ASN	-	expression tag	UNP A0A0Y5D4F5
E	0	ALA	-	expression tag	UNP A0A0Y5D4F5
E	39	ALA	ASP	engineered mutation	UNP A0A0Y5D4F5
F	-2	SER	-	expression tag	UNP A0A0Y5D4F5
F	-1	ASN	-	expression tag	UNP A0A0Y5D4F5
F	0	ALA	-	expression tag	UNP A0A0Y5D4F5
F	39	ALA	ASP	engineered mutation	UNP A0A0Y5D4F5

-
- The image displays the chemical structure of Guanosine Diphosphate (GDP). It consists of a guanine base (a purine ring system with an amino group at C2 and a carbonyl group at C6) linked to a ribose sugar via a glycosidic bond at the C1 position. The ribose sugar is further linked to two phosphate groups (P1 and P2) via phosphodiester bonds. The structure is labeled with atom names and numbers: N1, C2, N3, C4, N7, C8 for the guanine base; C1', C2', C3', C4', C5' for the ribose sugar; and O1A, O2A, O3A, O1B, O2B for the phosphate groups. The phosphate groups are shown as P(=O)(OH)O- and P(=O)(OH)O- respectively.

- Molecule 3 is COENZYME A (three-letter code: COA) (formula: $C_{21}H_{36}N_7O_{16}P_3S$).



Mol	Chain	Residues	Atoms						ZeroOcc	AltConf
3	A	1	Total	C	N	O	P	S	0	0
			48	21	7	16	3	1		
3	B	1	Total	C	N	O	P	S	0	0
			48	21	7	16	3	1		
3	C	1	Total	C	N	O	P	S	0	0
			48	21	7	16	3	1		
3	D	1	Total	C	N	O	P	S	0	0
			48	21	7	16	3	1		
3	E	1	Total	C	N	O	P	S	0	0
			48	21	7	16	3	1		
3	F	1	Total	C	N	O	P	S	0	0
			48	21	7	16	3	1		


- Molecule 4 is CHLORIDE ION (three-letter code: CL) (formula: Cl).

Mol	Chain	Residues	Atoms		ZeroOcc	AltConf
4	B	2	Total	Cl	0	0
			2	2		
4	A	1	Total	Cl	0	0
			1	1		
4	D	1	Total	Cl	0	0
			1	1		
4	F	1	Total	Cl	0	0
			1	1		
4	E	1	Total	Cl	0	0
			1	1		

3 Residue-property plots [i](#)


These plots are drawn for all protein, RNA and DNA chains in the entry. The first graphic for a chain summarises the proportions of the various outlier classes displayed in the second graphic. The second graphic shows the sequence view annotated by issues in geometry and electron density. Residues are color-coded according to the number of geometric quality criteria for which they contain at least one outlier: green = 0, yellow = 1, orange = 2 and red = 3 or more. A red dot above a residue indicates a poor fit to the electron density ($RSRZ > 2$). Stretches of 2 or more consecutive residues without any outlier are shown as a green connector. Residues present in the sample, but not in the model, are shown in grey.

- Molecule 1: Acyl-CoA hydrolase

Chain A: 




- Molecule 1: Acyl-CoA hydrolase

Chain B: 




- Molecule 1: Acyl-CoA hydrolase

Chain C: 




- Molecule 1: Acyl-CoA hydrolase

Chain D: 

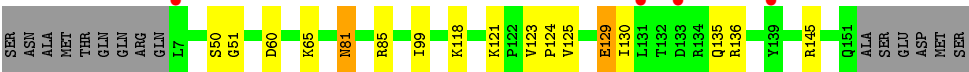
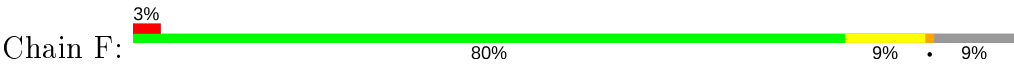


- Molecule 1: Acyl-CoA hydrolase

Chain E: 



- Molecule 1: Acyl-CoA hydrolase



4 Data and refinement statistics

Property	Value	Source
Space group	P 31 2 1	Depositor
Cell constants a, b, c, α , β , γ	226.07Å 226.07Å 68.32Å 90.00° 90.00° 120.00°	Depositor
Resolution (Å)	39.79 – 2.80 39.79 – 2.80	Depositor EDS
% Data completeness (in resolution range)	99.8 (39.79-2.80) 98.5 (39.79-2.80)	Depositor EDS
R_{merge}	0.04	Depositor
R_{sym}	(Not available)	Depositor
$\langle I/\sigma(I) \rangle$ ¹	4.70 (at 2.81Å)	Xtriage
Refinement program	PHENIX 1.9_1692	Depositor
R, R_{free}	0.173 , 0.212 0.177 , 0.215	Depositor DCC
R_{free} test set	2372 reflections (4.80%)	wwPDB-VP
Wilson B-factor (Å ²)	37.1	Xtriage
Anisotropy	0.370	Xtriage
Bulk solvent k_{sol} (e/Å ³), B_{sol} (Å ²)	0.35 , 35.1	EDS
L-test for twinning ²	$\langle L \rangle = 0.47$, $\langle L^2 \rangle = 0.30$	Xtriage
Estimated twinning fraction	0.040 for -h,-k,l	Xtriage
F_o, F_c correlation	0.93	EDS
Total number of atoms	7407	wwPDB-VP
Average B, all atoms (Å ²)	34.0	wwPDB-VP

Xtriage's analysis on translational NCS is as follows: *The largest off-origin peak in the Patterson function is 3.53% of the height of the origin peak. No significant pseudotranslation is detected.*

¹Intensities estimated from amplitudes.

²Theoretical values of $\langle |L| \rangle$, $\langle L^2 \rangle$ for acentric reflections are 0.5, 0.333 respectively for untwinned datasets, and 0.375, 0.2 for perfectly twinned datasets.

5 Model quality [i](#)

5.1 Standard geometry [i](#)

Bond lengths and bond angles in the following residue types are not validated in this section: GDP, COA, CL

The Z score for a bond length (or angle) is the number of standard deviations the observed value is removed from the expected value. A bond length (or angle) with $|Z| > 5$ is considered an outlier worth inspection. RMSZ is the root-mean-square of all Z scores of the bond lengths (or angles).

Mol	Chain	Bond lengths		Bond angles	
		RMSZ	# Z >5	RMSZ	# Z >5
1	A	0.48	0/1171	0.58	0/1583
1	B	0.46	0/1171	0.57	0/1584
1	C	0.44	0/1200	0.56	0/1622
1	D	0.43	0/1189	0.55	0/1607
1	E	0.46	0/1180	0.57	0/1595
1	F	0.47	0/1160	0.60	0/1569
All	All	0.46	0/7071	0.57	0/9560

There are no bond length outliers.

There are no bond angle outliers.

There are no chirality outliers.

There are no planarity outliers.

5.2 Too-close contacts [i](#)

In the following table, the Non-H and H(model) columns list the number of non-hydrogen atoms and hydrogen atoms in the chain respectively. The H(added) column lists the number of hydrogen atoms added and optimized by MolProbity. The Clashes column lists the number of clashes within the asymmetric unit, whereas Symm-Clashes lists symmetry related clashes.

Mol	Chain	Non-H	H(model)	H(added)	Clashes	Symm-Clashes
1	A	1150	0	1166	3	0
1	B	1150	0	1163	16	0
1	C	1179	0	1190	8	0
1	D	1168	0	1182	7	0
1	E	1159	0	1174	12	0
1	F	1139	0	1153	13	0
2	A	28	0	12	0	0

Continued on next page...

Continued from previous page...

Mol	Chain	Non-H	H(model)	H(added)	Clashes	Symm-Clashes
2	B	28	0	12	0	0
2	C	28	0	12	1	0
2	D	28	0	12	0	0
2	E	28	0	12	0	0
2	F	28	0	12	0	0
3	A	48	0	32	2	0
3	B	48	0	32	2	0
3	C	48	0	32	3	0
3	D	48	0	32	2	0
3	E	48	0	32	1	0
3	F	48	0	32	2	0
4	A	1	0	0	0	0
4	B	2	0	0	0	0
4	D	1	0	0	0	0
4	E	1	0	0	0	0
4	F	1	0	0	0	0
All	All	7407	0	7292	58	0

The all-atom clashscore is defined as the number of clashes found per 1000 atoms (including hydrogen atoms). The all-atom clashscore for this structure is 4.

All (58) close contacts within the same asymmetric unit are listed below, sorted by their clash magnitude.

Atom-1	Atom-2	Interatomic distance (Å)	Clash overlap (Å)
3:F:201:COA:C1B	3:F:201:COA:O4B	1.67	1.27
3:B:202:COA:C1B	3:B:202:COA:O4B	1.67	1.26
3:C:201:COA:O4B	3:C:201:COA:C1B	1.68	1.25
3:A:201:COA:C1B	3:A:201:COA:O4B	1.67	1.21
3:E:201:COA:O4B	3:E:201:COA:C1B	1.68	1.17
3:D:201:COA:O4B	3:D:201:COA:C1B	1.67	1.11
1:F:130:ILE:HG21	1:F:136:ARG:HG3	1.68	0.76
1:E:81:ASN:HD22	1:E:138:ARG:HG2	1.60	0.66
1:C:136:ARG:O	1:C:140:GLU:HG3	1.98	0.63
1:E:93:ARG:NH1	1:E:95:GLU:OE2	2.29	0.62
1:E:81:ASN:ND2	1:E:138:ARG:HG2	2.14	0.62
1:F:130:ILE:HG21	1:F:136:ARG:CG	2.30	0.62
1:C:9:SER:HA	1:C:48:ARG:HH21	1.67	0.60
1:F:81:ASN:OD1	1:F:81:ASN:N	2.35	0.59
1:F:130:ILE:HG23	1:F:135:GLN:HB3	1.86	0.57
1:F:129:GLU:CD	1:F:129:GLU:H	2.09	0.55
1:C:46:ALA:HB1	1:C:88:MET:HE3	1.92	0.52

Continued on next page...

Continued from previous page...

Atom-1	Atom-2	Interatomic distance (Å)	Clash overlap (Å)
1:F:50:SER:HB2	1:F:125:VAL:HG12	1.92	0.52
1:B:16:GLU:HG2	1:B:18:MET:CE	2.41	0.51
1:A:57:LEU:HD21	3:A:201:COA:C4A	2.41	0.51
1:B:37:LEU:O	1:B:41:VAL:HG23	2.12	0.50
1:B:105:ARG:HH21	1:D:134:ARG:HD2	1.78	0.49
1:B:48:ARG:HA	1:F:99:ILE:HD12	1.94	0.49
1:B:16:GLU:HG2	1:B:18:MET:HE1	1.93	0.49
1:B:105:ARG:NH2	1:D:134:ARG:HH11	2.11	0.48
1:B:83:THR:HG22	1:B:88:MET:HG2	1.94	0.48
1:B:11:GLU:O	1:B:48:ARG:NH2	2.46	0.48
1:C:146:ARG:NH2	3:C:201:COA:O2B	2.47	0.48
1:E:137:CYS:O	1:E:141:LYS:HG3	2.14	0.48
1:F:60:ASP:OD2	1:F:145:ARG:HD2	2.14	0.47
1:D:57:LEU:HD21	3:D:201:COA:C4A	2.45	0.47
1:B:18:MET:HE3	1:B:74:VAL:HB	1.97	0.47
1:B:105:ARG:NH2	1:D:134:ARG:HD2	2.29	0.46
1:C:57:LEU:HD21	3:C:201:COA:C4A	2.46	0.46
1:F:65:LYS:HB3	1:F:65:LYS:HE3	1.75	0.45
1:B:57:LEU:HD21	3:B:202:COA:C4A	2.47	0.45
1:F:85:ARG:O	1:F:124:PRO:HA	2.17	0.45
1:A:139:TYR:CD2	1:B:127:PRO:HG3	2.53	0.44
1:D:48:ARG:HA	1:E:99:ILE:HD12	1.99	0.44
1:C:99:ILE:HA	1:C:99:ILE:HD13	1.73	0.44
1:A:83:THR:HG22	1:A:88:MET:HG2	2.00	0.43
1:C:89:GLU:OE2	1:C:145:ARG:NH1	2.50	0.43
1:E:81:ASN:HB3	1:E:138:ARG:HB3	2.00	0.43
3:F:201:COA:H8A	3:F:201:COA:O3A	2.17	0.43
1:E:34:LEU:HD23	1:E:64:PHE:CE1	2.53	0.43
1:C:138:ARG:HD2	2:C:200:GDP:O3B	2.18	0.43
1:E:9:SER:HA	1:E:48:ARG:HH21	1.84	0.43
1:D:10:HIS:HB2	1:D:80:VAL:HB	2.01	0.43
1:D:99:ILE:O	1:E:51:GLY:HA2	2.19	0.43
1:E:97:GLN:HB2	1:E:104:ILE:HG12	2.01	0.42
1:B:99:ILE:O	1:F:51:GLY:HA2	2.20	0.42
1:B:23:ALA:HB2	1:B:70:ILE:HD11	2.02	0.41
1:B:34:LEU:HD23	1:B:64:PHE:CE1	2.56	0.41
1:F:99:ILE:HD13	1:F:99:ILE:HA	1.83	0.40
1:E:23:ALA:HA	1:E:28:ASN:O	2.21	0.40
1:F:118:LYS:HB3	1:F:123:VAL:HG11	2.03	0.40
1:B:99:ILE:HA	1:B:99:ILE:HD13	1.86	0.40
1:E:83:THR:HG22	1:E:88:MET:HG2	2.04	0.40

There are no symmetry-related clashes.

5.3 Torsion angles [i](#)

5.3.1 Protein backbone [i](#)

In the following table, the Percentiles column shows the percent Ramachandran outliers of the chain as a percentile score with respect to all X-ray entries followed by that with respect to entries of similar resolution.

The Analysed column shows the number of residues for which the backbone conformation was analysed, and the total number of residues.

Mol	Chain	Analysed	Favoured	Allowed	Outliers	Percentiles	
1	A	144/160 (90%)	139 (96%)	5 (4%)	0	100	100
1	B	145/160 (91%)	141 (97%)	4 (3%)	0	100	100
1	C	148/160 (92%)	143 (97%)	5 (3%)	0	100	100
1	D	146/160 (91%)	142 (97%)	4 (3%)	0	100	100
1	E	145/160 (91%)	140 (97%)	5 (3%)	0	100	100
1	F	143/160 (89%)	140 (98%)	3 (2%)	0	100	100
All	All	871/960 (91%)	845 (97%)	26 (3%)	0	100	100

There are no Ramachandran outliers to report.

5.3.2 Protein sidechains [i](#)

In the following table, the Percentiles column shows the percent sidechain outliers of the chain as a percentile score with respect to all X-ray entries followed by that with respect to entries of similar resolution.

The Analysed column shows the number of residues for which the sidechain conformation was analysed, and the total number of residues.

Mol	Chain	Analysed	Rotameric	Outliers	Percentiles	
1	A	128/140 (91%)	128 (100%)	0	100	100
1	B	128/140 (91%)	128 (100%)	0	100	100
1	C	131/140 (94%)	130 (99%)	1 (1%)	81	94
1	D	130/140 (93%)	130 (100%)	0	100	100
1	E	129/140 (92%)	128 (99%)	1 (1%)	81	94
1	F	127/140 (91%)	124 (98%)	3 (2%)	49	81

Continued on next page...

Continued from previous page...

Mol	Chain	Analysed	Rotameric	Outliers	Percentiles	
All	All	773/840 (92%)	768 (99%)	5 (1%)	86	96

All (5) residues with a non-rotameric sidechain are listed below:

Mol	Chain	Res	Type
1	C	7	LEU
1	E	81	ASN
1	F	81	ASN
1	F	121	LYS
1	F	129	GLU

Some sidechains can be flipped to improve hydrogen bonding and reduce clashes. All (1) such sidechains are listed below:

Mol	Chain	Res	Type
1	E	81	ASN

5.3.3 RNA [i](#)

There are no RNA molecules in this entry.

5.4 Non-standard residues in protein, DNA, RNA chains [i](#)

There are no non-standard protein/DNA/RNA residues in this entry.

5.5 Carbohydrates [i](#)

There are no carbohydrates in this entry.

5.6 Ligand geometry [i](#)

Of 18 ligands modelled in this entry, 6 are monoatomic - leaving 12 for Mogul analysis.

In the following table, the Counts columns list the number of bonds (or angles) for which Mogul statistics could be retrieved, the number of bonds (or angles) that are observed in the model and the number of bonds (or angles) that are defined in the Chemical Component Dictionary. The Link column lists molecule types, if any, to which the group is linked. The Z score for a bond length (or angle) is the number of standard deviations the observed value is removed from the expected value. A bond length (or angle) with $|Z| > 2$ is considered an outlier worth inspection. RMSZ is the root-mean-square of all Z scores of the bond lengths (or angles).

Mol	Type	Chain	Res	Link	Bond lengths			Bond angles		
					Counts	RMSZ	# Z > 2	Counts	RMSZ	# Z > 2
3	COA	C	201	-	41,50,50	4.45	17 (41%)	52,75,75	1.95	8 (15%)
2	GDP	B	201	-	24,30,30	1.04	2 (8%)	31,47,47	1.92	8 (25%)
3	COA	E	201	-	41,50,50	4.44	17 (41%)	52,75,75	1.97	10 (19%)
3	COA	B	202	-	41,50,50	4.39	17 (41%)	52,75,75	1.77	6 (11%)
2	GDP	A	200	-	24,30,30	1.15	2 (8%)	31,47,47	1.78	7 (22%)
2	GDP	C	200	-	24,30,30	1.17	2 (8%)	31,47,47	2.09	7 (22%)
2	GDP	D	200	-	24,30,30	1.02	2 (8%)	31,47,47	1.85	8 (25%)
2	GDP	E	200	-	24,30,30	1.18	2 (8%)	31,47,47	2.00	8 (25%)
2	GDP	F	200	-	24,30,30	1.09	2 (8%)	31,47,47	1.76	7 (22%)
3	COA	D	201	-	41,50,50	4.45	18 (43%)	52,75,75	1.98	7 (13%)
3	COA	F	201	-	41,50,50	4.44	17 (41%)	52,75,75	1.81	8 (15%)
3	COA	A	201	-	41,50,50	4.35	17 (41%)	52,75,75	1.82	9 (17%)

In the following table, the Chirals column lists the number of chiral outliers, the number of chiral centers analysed, the number of these observed in the model and the number defined in the Chemical Component Dictionary. Similar counts are reported in the Torsion and Rings columns. '-' means no outliers of that kind were identified.

Mol	Type	Chain	Res	Link	Chirals	Torsions	Rings
3	COA	C	201	-	-	2/44/64/64	0/3/3/3
2	GDP	B	201	-	-	2/12/32/32	0/3/3/3
3	COA	E	201	-	-	8/44/64/64	0/3/3/3
3	COA	B	202	-	-	2/44/64/64	0/3/3/3
2	GDP	A	200	-	-	1/12/32/32	0/3/3/3
2	GDP	C	200	-	-	3/12/32/32	0/3/3/3
2	GDP	D	200	-	-	5/12/32/32	0/3/3/3
2	GDP	E	200	-	-	7/12/32/32	0/3/3/3
2	GDP	F	200	-	-	2/12/32/32	0/3/3/3
3	COA	D	201	-	-	4/44/64/64	0/3/3/3
3	COA	F	201	-	-	4/44/64/64	0/3/3/3
3	COA	A	201	-	-	0/44/64/64	0/3/3/3

All (115) bond length outliers are listed below:

Mol	Chain	Res	Type	Atoms	Z	Observed(Å)	Ideal(Å)
3	E	201	COA	O4B-C1B	19.48	1.68	1.41
3	C	201	COA	O4B-C1B	19.39	1.68	1.41

Continued on next page...

Continued from previous page...

Mol	Chain	Res	Type	Atoms	Z	Observed(Å)	Ideal(Å)
3	D	201	COA	O4B-C1B	19.24	1.67	1.41
3	F	201	COA	O4B-C1B	18.96	1.67	1.41
3	B	202	COA	O4B-C1B	18.90	1.67	1.41
3	A	201	COA	O4B-C1B	18.87	1.67	1.41
3	C	201	COA	C2B-C1B	-13.82	1.32	1.53
3	D	201	COA	C2B-C1B	-13.79	1.32	1.53
3	B	202	COA	C2B-C1B	-13.79	1.32	1.53
3	E	201	COA	C2B-C1B	-13.74	1.32	1.53
3	F	201	COA	C2B-C1B	-13.63	1.33	1.53
3	A	201	COA	C2B-C1B	-13.37	1.33	1.53
3	F	201	COA	C9P-N8P	7.69	1.50	1.33
3	B	202	COA	C9P-N8P	7.28	1.49	1.33
3	D	201	COA	C9P-N8P	7.13	1.49	1.33
3	E	201	COA	C9P-N8P	7.06	1.49	1.33
3	A	201	COA	C9P-N8P	6.98	1.48	1.33
3	D	201	COA	O4B-C4B	-6.94	1.29	1.45
3	C	201	COA	C9P-N8P	6.70	1.48	1.33
3	F	201	COA	O4B-C4B	-6.68	1.30	1.45
3	C	201	COA	O4B-C4B	-6.66	1.30	1.45
3	B	202	COA	O4B-C4B	-6.58	1.30	1.45
3	A	201	COA	O4B-C4B	-6.45	1.30	1.45
3	E	201	COA	O4B-C4B	-6.28	1.31	1.45
3	F	201	COA	C5P-N4P	4.61	1.43	1.33
3	F	201	COA	C6A-N6A	4.26	1.49	1.34
3	E	201	COA	C5P-N4P	4.15	1.42	1.33
3	D	201	COA	C5P-N4P	4.14	1.42	1.33
3	D	201	COA	O3B-C3B	-4.09	1.29	1.44
3	C	201	COA	C5P-N4P	4.05	1.42	1.33
2	E	200	GDP	C6-C5	4.05	1.48	1.41
3	B	202	COA	C5P-N4P	4.02	1.42	1.33
3	D	201	COA	C6A-N6A	4.01	1.48	1.34
3	B	202	COA	C6A-N6A	4.00	1.48	1.34
3	A	201	COA	C5P-N4P	3.95	1.42	1.33
3	B	202	COA	O3B-C3B	-3.95	1.29	1.44
2	C	200	GDP	C6-C5	3.93	1.48	1.41
3	C	201	COA	O3B-C3B	-3.90	1.29	1.44
3	E	201	COA	C6A-N6A	3.88	1.48	1.34
3	A	201	COA	C6A-N6A	3.85	1.48	1.34
3	C	201	COA	C6A-N6A	3.83	1.48	1.34
3	A	201	COA	O3B-C3B	-3.78	1.30	1.44
3	F	201	COA	O3B-C3B	-3.74	1.30	1.44
3	E	201	COA	O3B-C3B	-3.74	1.30	1.44

Continued on next page...

Continued from previous page...

Mol	Chain	Res	Type	Atoms	Z	Observed(Å)	Ideal(Å)
3	C	201	COA	C7P-N8P	-3.63	1.37	1.46
2	F	200	GDP	C6-C5	3.55	1.47	1.41
3	B	202	COA	C7P-N8P	-3.52	1.38	1.46
2	D	200	GDP	C6-C5	3.51	1.47	1.41
3	D	201	COA	C7P-N8P	-3.46	1.38	1.46
2	A	200	GDP	C6-C5	3.43	1.47	1.41
2	B	201	GDP	C6-C5	3.39	1.47	1.41
3	A	201	COA	C7P-N8P	-3.36	1.38	1.46
3	C	201	COA	P3B-O7A	-3.31	1.39	1.50
3	B	202	COA	C5A-C4A	-3.28	1.32	1.40
3	E	201	COA	P3B-O7A	-3.25	1.40	1.50
3	E	201	COA	C3B-C4B	3.25	1.61	1.52
3	C	201	COA	C5A-C4A	-3.21	1.32	1.40
3	D	201	COA	C5A-C4A	-3.20	1.32	1.40
3	D	201	COA	P3B-O7A	-3.19	1.40	1.50
3	A	201	COA	P3B-O7A	-3.18	1.40	1.50
3	F	201	COA	C5A-C4A	-3.17	1.32	1.40
3	F	201	COA	P3B-O3B	3.17	1.65	1.59
3	E	201	COA	C7P-N8P	-3.15	1.38	1.46
3	A	201	COA	C5A-C4A	-3.14	1.32	1.40
3	E	201	COA	P3B-O3B	3.11	1.65	1.59
3	C	201	COA	C3B-C4B	3.09	1.61	1.52
3	F	201	COA	C7P-N8P	-3.09	1.39	1.46
3	E	201	COA	C5A-C4A	-3.08	1.32	1.40
3	F	201	COA	P3B-O7A	-3.06	1.40	1.50
3	D	201	COA	O2B-C2B	3.04	1.50	1.43
3	B	202	COA	P3B-O7A	-3.00	1.40	1.50
3	A	201	COA	P3B-O9A	-2.99	1.43	1.54
3	F	201	COA	C3B-C4B	2.99	1.60	1.52
3	A	201	COA	P3B-O3B	2.98	1.64	1.59
3	C	201	COA	P3B-O9A	-2.85	1.43	1.54
3	B	202	COA	P3B-O9A	-2.84	1.43	1.54
3	E	201	COA	P3B-O9A	-2.80	1.44	1.54
3	F	201	COA	O2B-C2B	2.78	1.49	1.43
3	D	201	COA	P3B-O9A	-2.78	1.44	1.54
3	C	201	COA	O2B-C2B	2.77	1.49	1.43
3	D	201	COA	C3B-C4B	2.73	1.60	1.52
3	B	202	COA	C3B-C4B	2.70	1.60	1.52
3	F	201	COA	P3B-O9A	-2.70	1.44	1.54
3	A	201	COA	C3B-C4B	2.69	1.60	1.52
3	D	201	COA	O5P-C5P	2.68	1.28	1.23
3	C	201	COA	C2A-N3A	2.68	1.36	1.32

Continued on next page...

Continued from previous page...

Mol	Chain	Res	Type	Atoms	Z	Observed(Å)	Ideal(Å)
3	E	201	COA	O2B-C2B	2.64	1.49	1.43
3	F	201	COA	O5P-C5P	2.61	1.28	1.23
3	C	201	COA	P3B-O3B	2.56	1.64	1.59
3	B	202	COA	O2B-C2B	2.56	1.49	1.43
3	A	201	COA	O2B-C2B	2.51	1.48	1.43
2	F	200	GDP	C5-C4	2.45	1.47	1.40
3	D	201	COA	C4A-N3A	2.43	1.39	1.35
3	A	201	COA	O5P-C5P	2.37	1.28	1.23
2	C	200	GDP	C5-C4	2.36	1.47	1.40
2	D	200	GDP	C5-C4	2.32	1.47	1.40
3	C	201	COA	O5P-C5P	2.32	1.28	1.23
3	E	201	COA	O5P-C5P	2.32	1.28	1.23
2	E	200	GDP	C5-C4	2.31	1.47	1.40
3	B	202	COA	P3B-O3B	2.31	1.63	1.59
3	F	201	COA	P2A-O4A	2.27	1.58	1.50
3	C	201	COA	P2A-O4A	2.26	1.58	1.50
3	B	202	COA	O5P-C5P	2.23	1.27	1.23
3	E	201	COA	C2A-N3A	2.23	1.35	1.32
2	A	200	GDP	C5-C4	2.20	1.46	1.40
3	B	202	COA	P2A-O4A	2.18	1.58	1.50
3	D	201	COA	C2A-N3A	2.16	1.35	1.32
3	A	201	COA	C4A-N3A	2.16	1.38	1.35
3	E	201	COA	P2A-O4A	2.15	1.58	1.50
3	B	202	COA	C2A-N3A	2.08	1.35	1.32
3	D	201	COA	P2A-O4A	2.05	1.58	1.50
3	F	201	COA	C4A-N3A	2.05	1.38	1.35
2	B	201	GDP	C5-C4	2.04	1.46	1.40
3	D	201	COA	P3B-O3B	2.04	1.63	1.59
3	A	201	COA	C3P-N4P	-2.03	1.41	1.46

All (93) bond angle outliers are listed below:

Mol	Chain	Res	Type	Atoms	Z	Observed(°)	Ideal(°)
3	E	201	COA	C5A-C6A-N6A	7.75	132.12	120.35
3	F	201	COA	C5A-C6A-N6A	7.66	131.99	120.35
3	C	201	COA	C5A-C6A-N6A	7.50	131.75	120.35
3	D	201	COA	C5A-C6A-N6A	6.98	130.97	120.35
3	B	202	COA	C5A-C6A-N6A	6.84	130.74	120.35
3	A	201	COA	C5A-C6A-N6A	6.83	130.73	120.35
3	D	201	COA	C7P-C6P-C5P	-6.46	101.61	112.36
3	E	201	COA	C7P-C6P-C5P	-5.92	102.50	112.36
3	D	201	COA	N3A-C2A-N1A	-5.46	120.14	128.68

Continued on next page...

Continued from previous page...

Mol	Chain	Res	Type	Atoms	Z	Observed(°)	Ideal(°)
3	B	202	COA	N3A-C2A-N1A	-5.45	120.17	128.68
3	F	201	COA	N3A-C2A-N1A	-5.38	120.27	128.68
3	C	201	COA	N3A-C2A-N1A	-5.31	120.37	128.68
3	A	201	COA	N3A-C2A-N1A	-5.27	120.45	128.68
3	E	201	COA	N6A-C6A-N1A	-5.22	107.73	118.57
3	C	201	COA	N6A-C6A-N1A	-5.20	107.78	118.57
3	C	201	COA	C7P-C6P-C5P	-5.13	103.82	112.36
3	E	201	COA	N3A-C2A-N1A	-5.11	120.70	128.68
2	C	200	GDP	C2-N3-C4	5.00	121.07	115.36
3	A	201	COA	C7P-C6P-C5P	-4.97	104.07	112.36
2	A	200	GDP	C5-C6-N1	-4.88	116.75	123.43
2	B	201	GDP	C2-N3-C4	4.87	120.92	115.36
2	E	200	GDP	C2-N3-C4	4.81	120.85	115.36
2	C	200	GDP	C6-N1-C2	4.77	123.51	115.93
3	D	201	COA	N6A-C6A-N1A	-4.65	108.93	118.57
3	F	201	COA	N6A-C6A-N1A	-4.62	108.98	118.57
3	B	202	COA	N6A-C6A-N1A	-4.62	108.98	118.57
3	A	201	COA	N6A-C6A-N1A	-4.62	108.99	118.57
2	C	200	GDP	C5-C6-N1	-4.43	117.38	123.43
2	E	200	GDP	C5-C6-N1	-4.40	117.41	123.43
2	C	200	GDP	C6-C5-C4	-4.37	116.62	120.80
2	D	200	GDP	C6-N1-C2	4.23	122.65	115.93
2	E	200	GDP	C6-N1-C2	4.15	122.53	115.93
2	D	200	GDP	C2-N3-C4	4.15	120.09	115.36
2	D	200	GDP	C5-C6-N1	-4.12	117.80	123.43
2	A	200	GDP	C6-N1-C2	4.04	122.35	115.93
2	C	200	GDP	N3-C2-N1	-4.01	121.88	127.22
2	B	201	GDP	C6-N1-C2	3.99	122.28	115.93
2	F	200	GDP	C2-N3-C4	3.98	119.91	115.36
2	F	200	GDP	C5-C6-N1	-3.93	118.05	123.43
2	E	200	GDP	C6-C5-C4	-3.93	117.05	120.80
2	F	200	GDP	C6-N1-C2	3.93	122.17	115.93
2	B	201	GDP	C5-C6-N1	-3.92	118.07	123.43
2	B	201	GDP	C6-C5-C4	-3.86	117.11	120.80
2	D	200	GDP	C6-C5-C4	-3.83	117.14	120.80
2	F	200	GDP	C6-C5-C4	-3.73	117.23	120.80
2	B	201	GDP	N3-C2-N1	-3.62	122.40	127.22
2	A	200	GDP	C4-C5-N7	-3.61	105.64	109.40
2	A	200	GDP	C2-N3-C4	3.54	119.40	115.36
3	D	201	COA	C2P-C3P-N4P	-3.37	104.61	112.31
2	E	200	GDP	N3-C2-N1	-3.25	122.88	127.22
3	B	202	COA	C2P-C3P-N4P	-3.25	104.88	112.31

Continued on next page...

Continued from previous page...

Mol	Chain	Res	Type	Atoms	Z	Observed(°)	Ideal(°)
2	D	200	GDP	N3-C2-N1	-3.15	123.02	127.22
3	D	201	COA	C3P-N4P-C5P	-3.10	117.08	122.84
2	F	200	GDP	N3-C2-N1	-3.09	123.10	127.22
2	B	201	GDP	C4-C5-N7	-2.95	106.33	109.40
3	B	202	COA	C7P-C6P-C5P	-2.94	107.46	112.36
2	E	200	GDP	C3'-C2'-C1'	2.89	105.33	100.98
2	C	200	GDP	O3B-PB-O3A	2.85	114.20	104.64
3	B	202	COA	C6P-C7P-N8P	-2.83	106.18	111.90
2	E	200	GDP	C4-C5-N7	-2.80	106.48	109.40
3	C	201	COA	P2A-O3A-P1A	-2.79	123.23	132.83
3	D	201	COA	C7P-N8P-C9P	-2.79	117.61	122.59
3	A	201	COA	C6P-C7P-N8P	-2.79	106.27	111.90
2	A	200	GDP	PA-O3A-PB	-2.66	123.70	132.83
3	F	201	COA	CDP-CBP-CAP	2.64	113.40	108.82
2	A	200	GDP	N3-C2-N1	-2.58	123.78	127.22
2	D	200	GDP	C3'-C2'-C1'	2.56	104.84	100.98
2	F	200	GDP	C4-C5-N7	-2.56	106.73	109.40
2	F	200	GDP	C3'-C2'-C1'	2.55	104.82	100.98
3	F	201	COA	C7P-C6P-C5P	-2.52	108.16	112.36
2	C	200	GDP	C4-C5-N7	-2.50	106.79	109.40
3	C	201	COA	CDP-CBP-CAP	2.49	113.14	108.82
3	C	201	COA	C7P-N8P-C9P	-2.47	118.17	122.59
3	F	201	COA	C2P-C3P-N4P	-2.47	106.66	112.31
3	E	201	COA	C7P-N8P-C9P	-2.36	118.37	122.59
2	E	200	GDP	PA-O3A-PB	-2.36	124.72	132.83
2	A	200	GDP	C6-C5-C4	-2.33	118.58	120.80
3	A	201	COA	O4B-C1B-C2B	-2.33	103.53	106.93
3	A	201	COA	C2P-C3P-N4P	-2.32	107.00	112.31
3	C	201	COA	C6P-C7P-N8P	-2.23	107.40	111.90
3	E	201	COA	P2A-O3A-P1A	-2.20	125.29	132.83
2	B	201	GDP	C3'-C2'-C1'	2.18	104.26	100.98
3	A	201	COA	C3P-N4P-C5P	-2.17	118.81	122.84
2	B	201	GDP	O3B-PB-O3A	2.16	111.88	104.64
2	D	200	GDP	C4-C5-N7	-2.15	107.15	109.40
3	A	201	COA	C3B-C2B-C1B	2.13	104.60	99.89
3	F	201	COA	P2A-O3A-P1A	-2.11	125.59	132.83
3	E	201	COA	C2P-C3P-N4P	-2.07	107.58	112.31
3	F	201	COA	C3P-N4P-C5P	-2.05	119.03	122.84
3	E	201	COA	C3P-N4P-C5P	-2.03	119.07	122.84
2	D	200	GDP	PA-O3A-PB	-2.02	125.89	132.83
3	E	201	COA	C6P-C5P-N4P	2.01	119.81	116.42
3	E	201	COA	CDP-CBP-CAP	2.01	112.31	108.82

There are no chirality outliers.

All (40) torsion outliers are listed below:

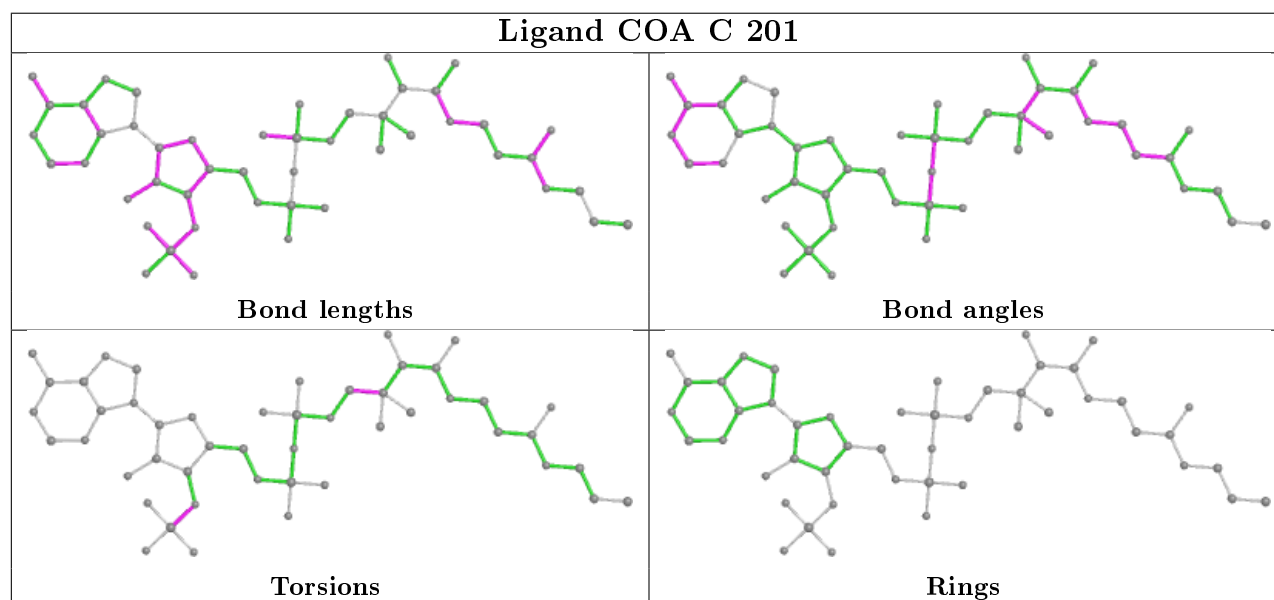
Mol	Chain	Res	Type	Atoms
2	B	201	GDP	PA-O3A-PB-O3B
2	A	200	GDP	PA-O3A-PB-O3B
2	C	200	GDP	PA-O3A-PB-O3B
2	D	200	GDP	C5'-O5'-PA-O3A
2	D	200	GDP	C5'-O5'-PA-O1A
2	E	200	GDP	C5'-O5'-PA-O1A
3	F	201	COA	S1P-C2P-C3P-N4P
3	E	201	COA	C3B-C4B-C5B-O5B
3	E	201	COA	O4B-C4B-C5B-O5B
2	D	200	GDP	PA-O3A-PB-O1B
3	F	201	COA	O4B-C4B-C5B-O5B
2	E	200	GDP	PB-O3A-PA-O5'
3	D	201	COA	O4B-C4B-C5B-O5B
2	D	200	GDP	PA-O3A-PB-O3B
2	E	200	GDP	C5'-O5'-PA-O3A
2	F	200	GDP	C5'-O5'-PA-O3A
2	E	200	GDP	PB-O3A-PA-O1A
2	E	200	GDP	C5'-O5'-PA-O2A
3	D	201	COA	C3B-C4B-C5B-O5B
3	F	201	COA	C3B-C4B-C5B-O5B
2	E	200	GDP	O4'-C4'-C5'-O5'
2	E	200	GDP	C3'-C4'-C5'-O5'
3	D	201	COA	CEP-CBP-CCP-O6A
3	E	201	COA	P2A-O3A-P1A-O2A
3	C	201	COA	CEP-CBP-CCP-O6A
3	E	201	COA	CEP-CBP-CCP-O6A
2	D	200	GDP	PB-O3A-PA-O1A
3	F	201	COA	P2A-O3A-P1A-O2A
3	E	201	COA	C3B-O3B-P3B-O7A
3	E	201	COA	CDP-CBP-CCP-O6A
2	C	200	GDP	PA-O3A-PB-O1B
3	D	201	COA	CDP-CBP-CCP-O6A
2	C	200	GDP	PA-O3A-PB-O2B
2	F	200	GDP	PA-O3A-PB-O2B
3	C	201	COA	C3B-O3B-P3B-O8A
3	E	201	COA	C3B-O3B-P3B-O8A
3	E	201	COA	P2A-O3A-P1A-O1A
3	B	202	COA	P2A-O3A-P1A-O1A
3	B	202	COA	P2A-O3A-P1A-O2A
2	B	201	GDP	PA-O3A-PB-O1B

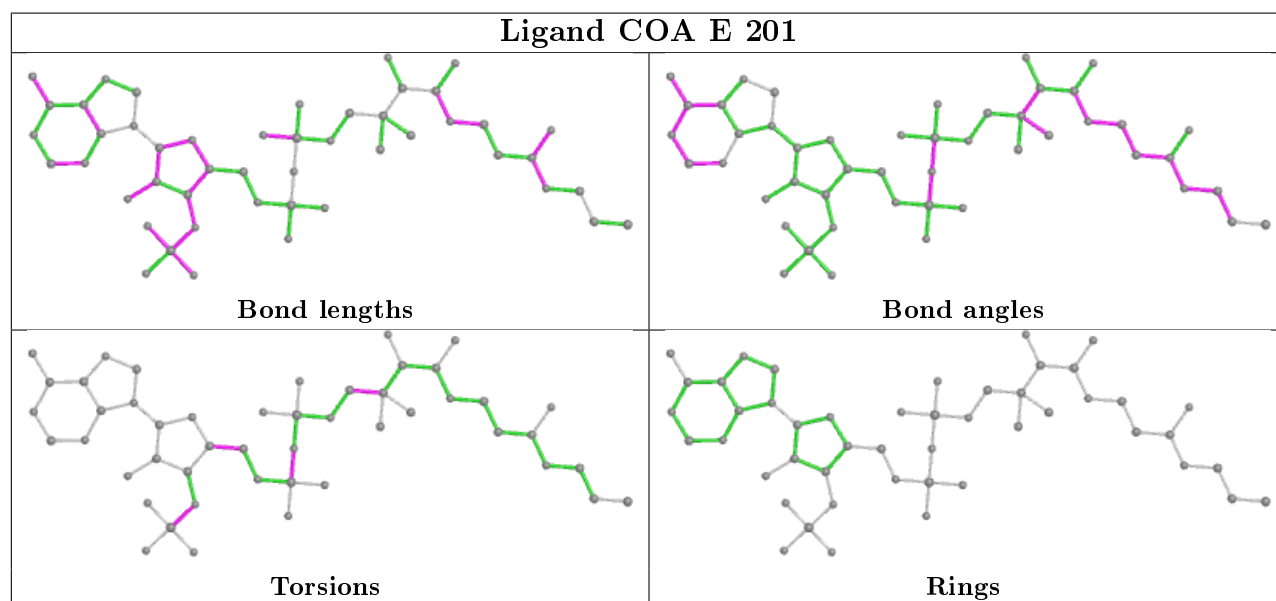
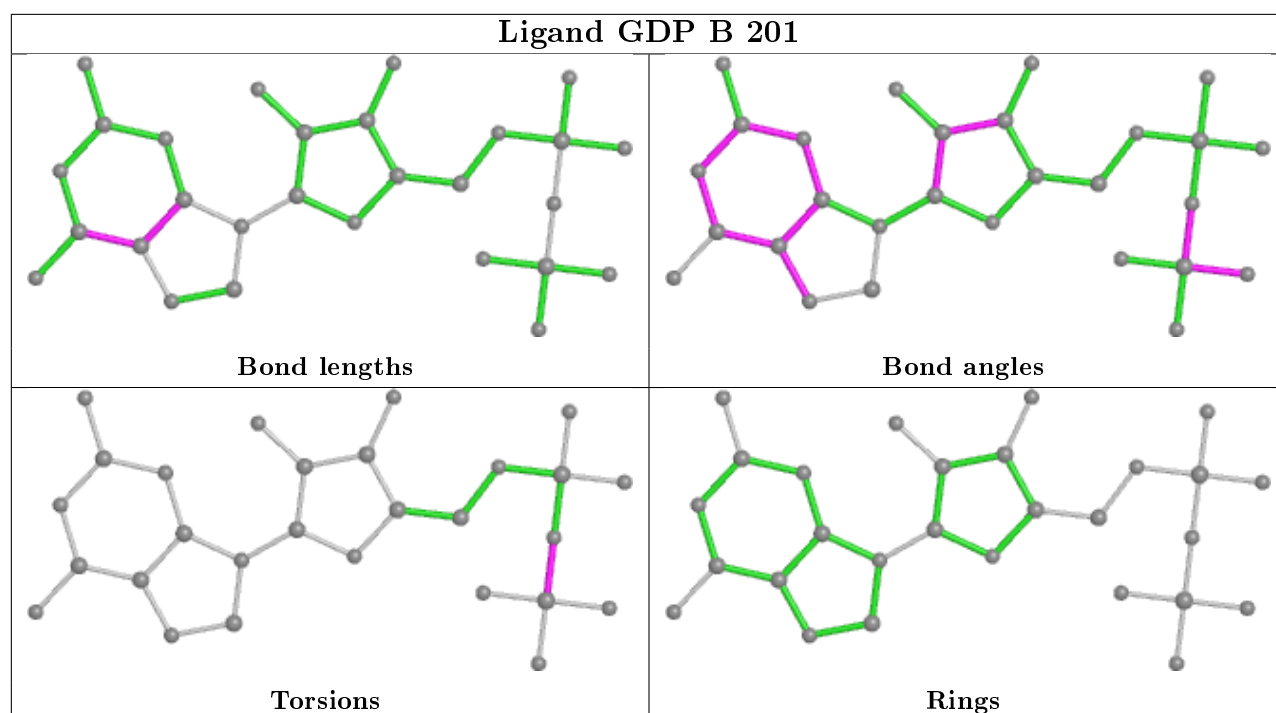
There are no ring outliers.

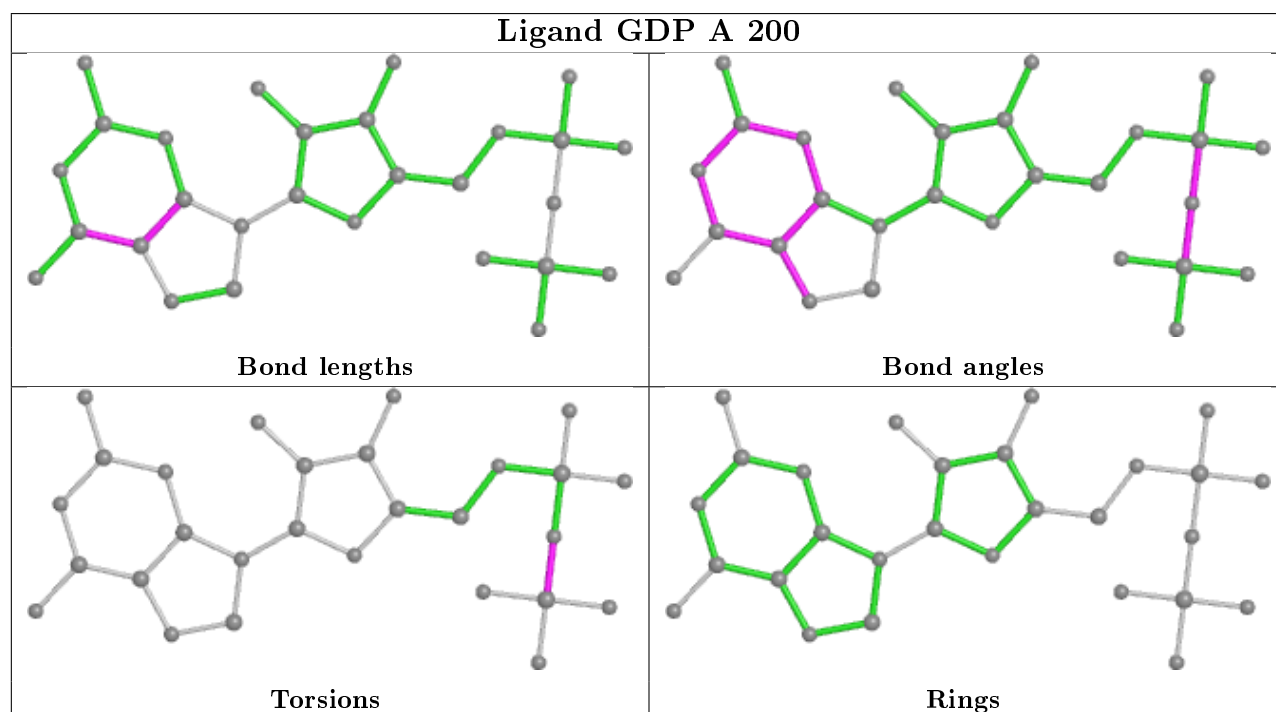
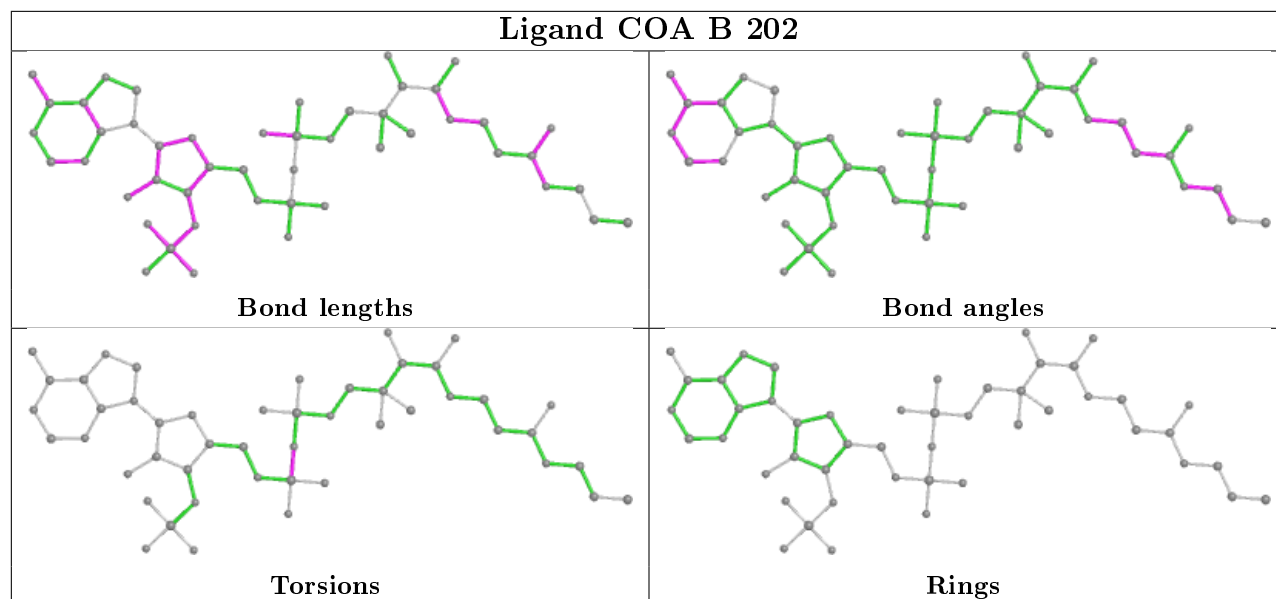
7 monomers are involved in 13 short contacts:

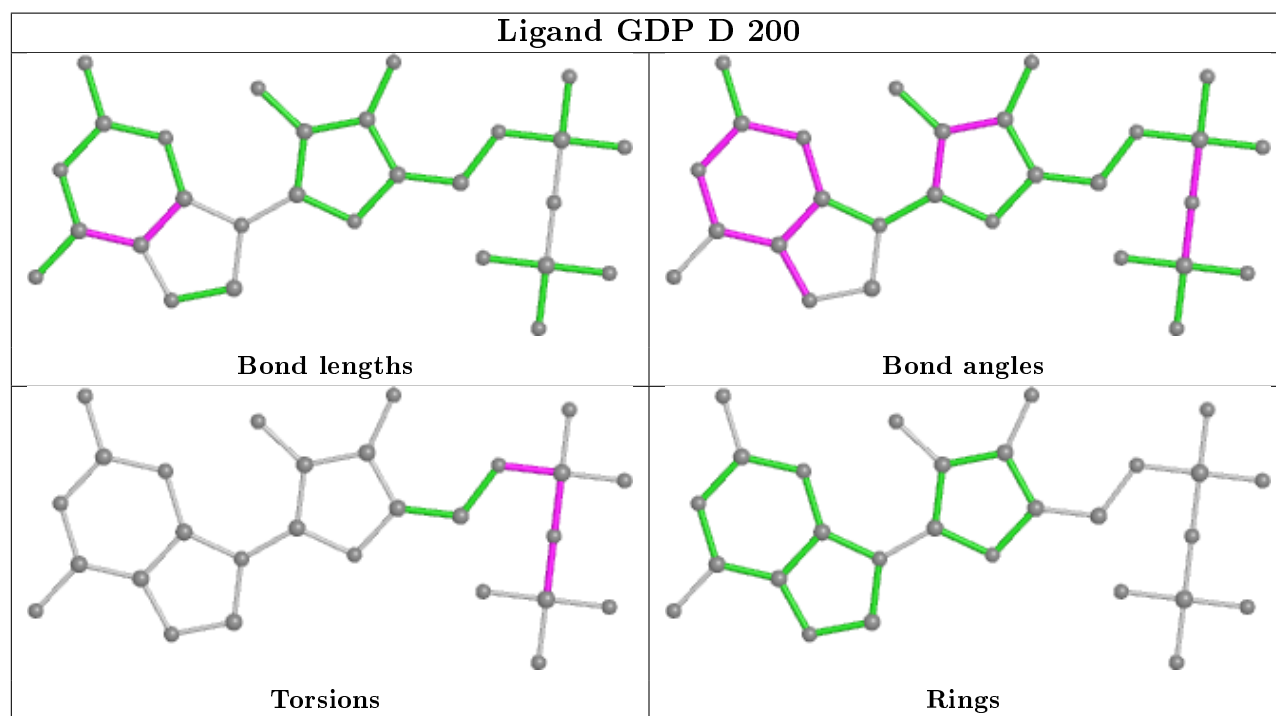
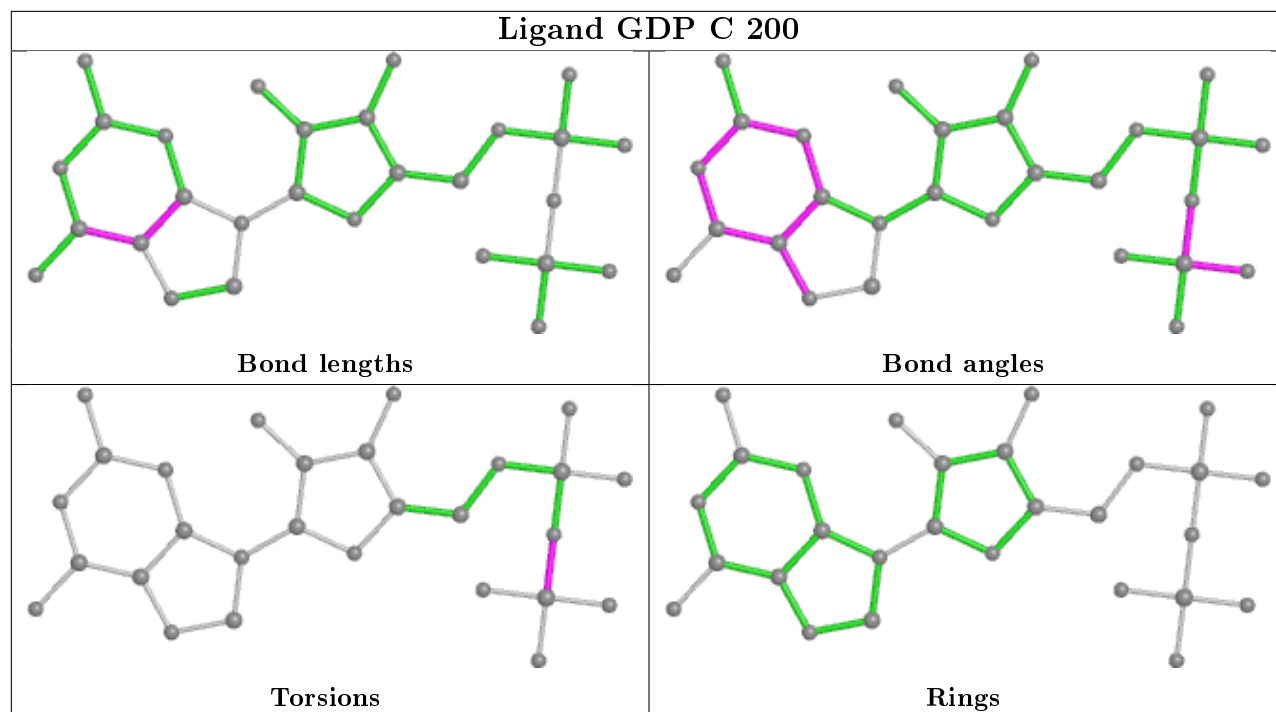
Mol	Chain	Res	Type	Clashes	Symm-Clashes
3	C	201	COA	3	0
3	E	201	COA	1	0
3	B	202	COA	2	0
2	C	200	GDP	1	0
3	D	201	COA	2	0
3	F	201	COA	2	0
3	A	201	COA	2	0

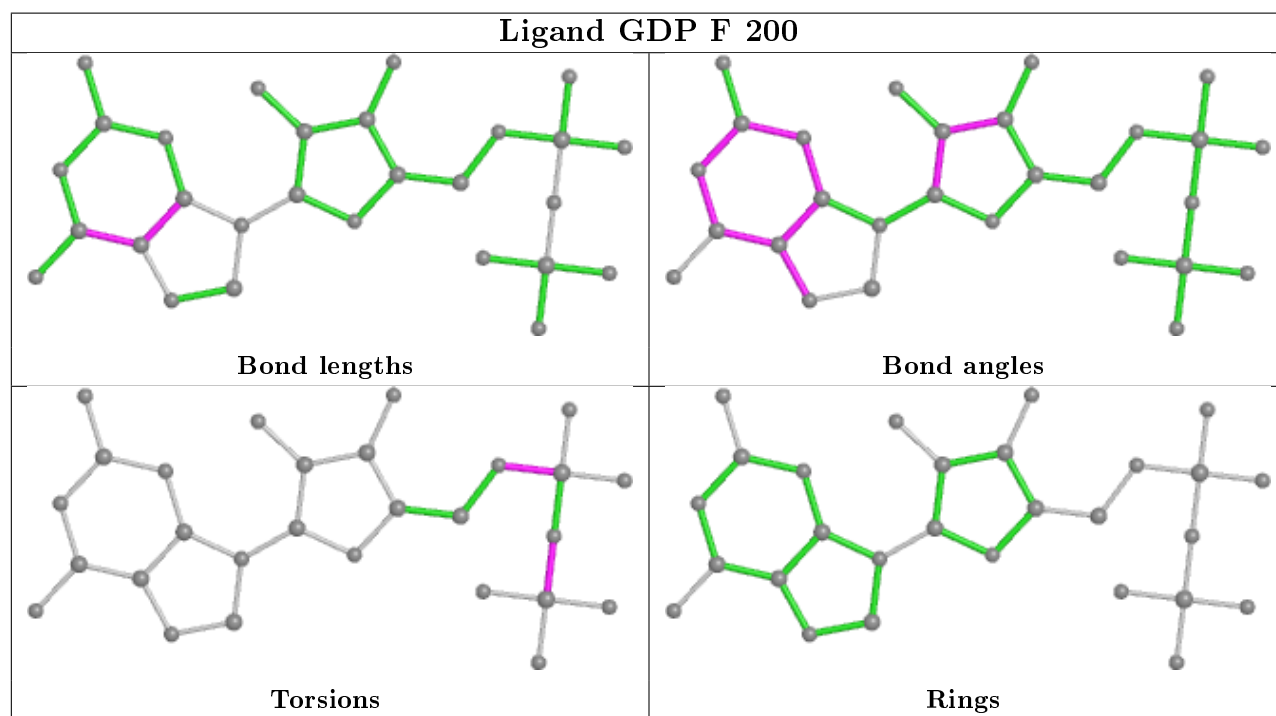
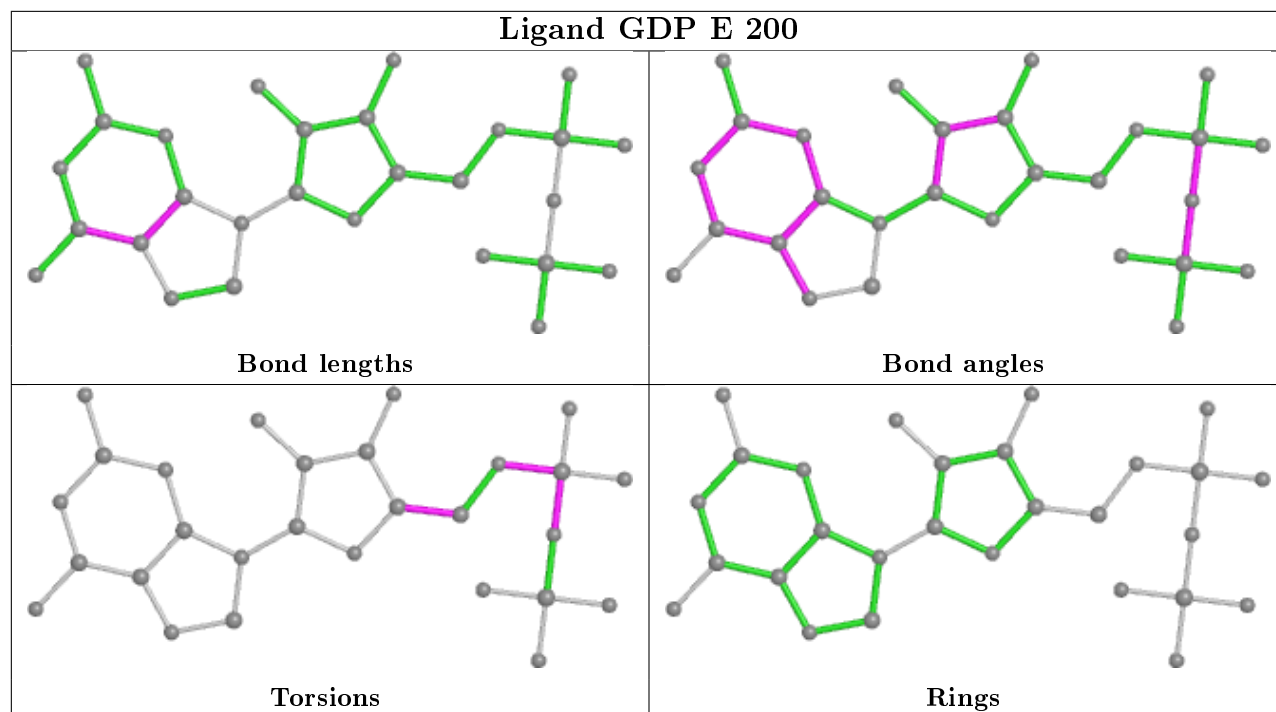
The following is a two-dimensional graphical depiction of Mogul quality analysis of bond lengths, bond angles, torsion angles, and ring geometry for all instances of the Ligand of Interest. In addition, ligands with molecular weight > 250 and outliers as shown on the validation Tables will also be included. For torsion angles, if less than 5% of the Mogul distribution of torsion angles is within 10 degrees of the torsion angle in question, then that torsion angle is considered an outlier. Any bond that is central to one or more torsion angles identified as an outlier by Mogul will be highlighted in the graph. For rings, the root-mean-square deviation (RMSD) between the ring in question and similar rings identified by Mogul is calculated over all ring torsion angles. If the average RMSD is greater than 60 degrees and the minimal RMSD between the ring in question and any Mogul-identified rings is also greater than 60 degrees, then that ring is considered an outlier. The outliers are highlighted in purple. The color gray indicates Mogul did not find sufficient equivalents in the CSD to analyse the geometry.

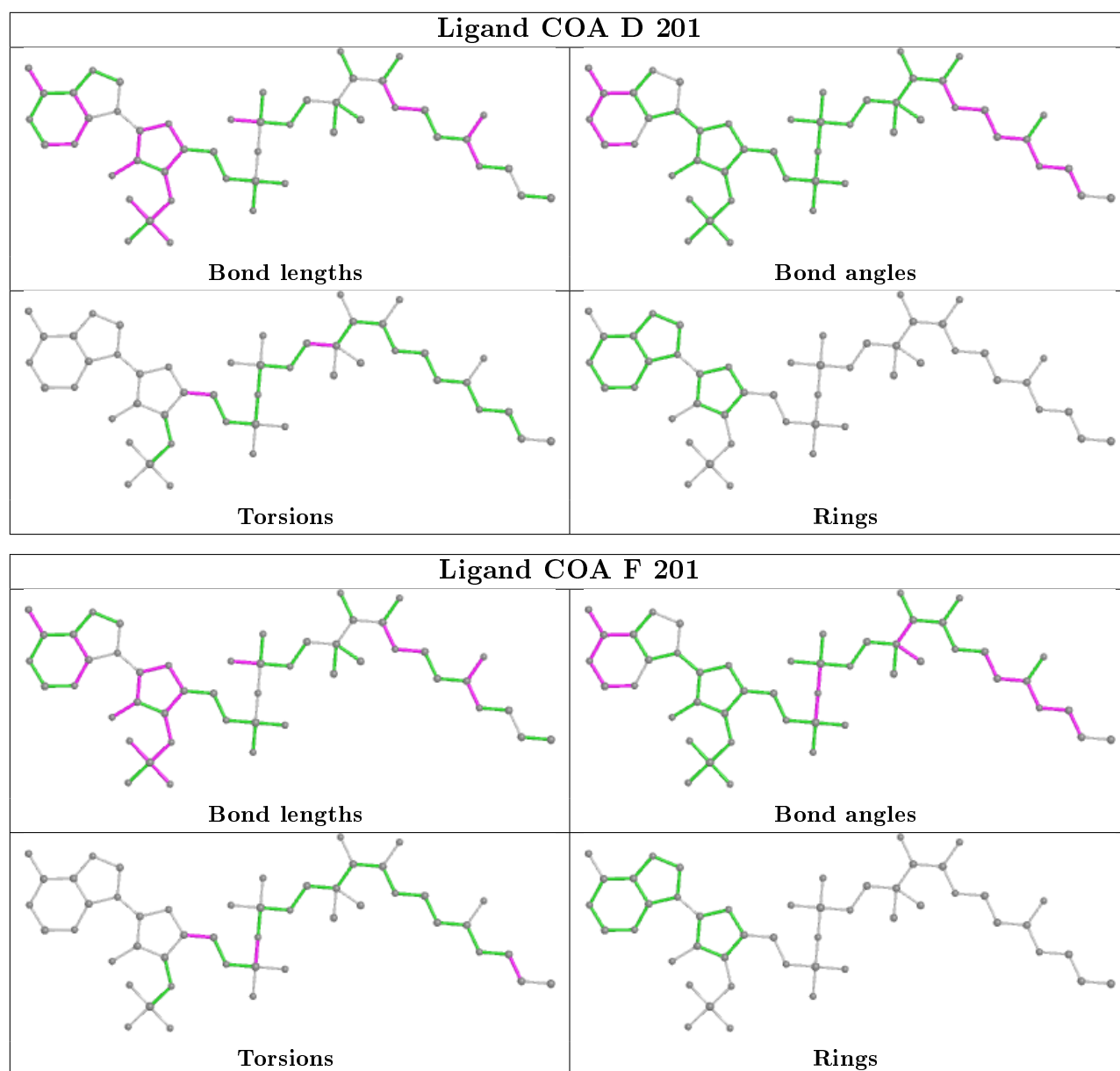


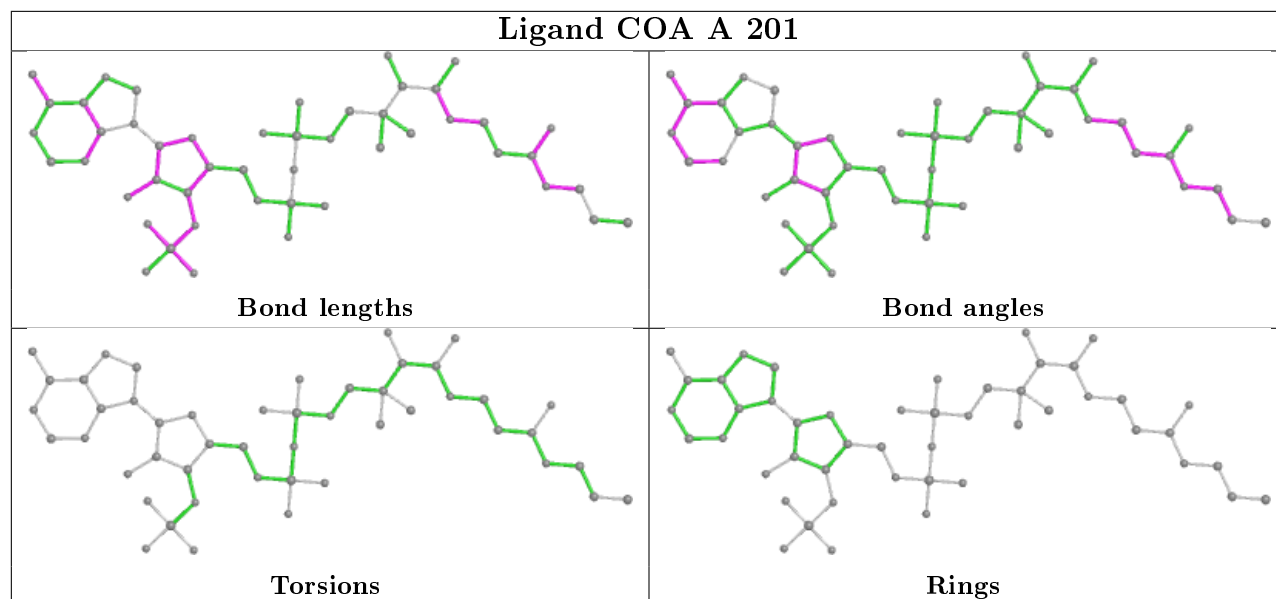












5.7 Other polymers [i](#)

There are no such residues in this entry.

5.8 Polymer linkage issues [i](#)

There are no chain breaks in this entry.

6 Fit of model and data [i](#)

6.1 Protein, DNA and RNA chains [i](#)

In the following table, the column labelled ‘#RSRZ> 2’ contains the number (and percentage) of RSRZ outliers, followed by percent RSRZ outliers for the chain as percentile scores relative to all X-ray entries and entries of similar resolution. The OWAB column contains the minimum, median, 95th percentile and maximum values of the occupancy-weighted average B-factor per residue. The column labelled ‘Q< 0.9’ lists the number of (and percentage) of residues with an average occupancy less than 0.9.

Mol	Chain	Analysed	<RSRZ>	#RSRZ>2	OWAB(Å ²)	Q<0.9
1	A	146/160 (91%)	-0.53	0 100 100	18, 28, 50, 69	0
1	B	147/160 (91%)	-0.65	0 100 100	18, 28, 46, 62	0
1	C	150/160 (93%)	-0.33	2 (1%) 77 72	19, 32, 60, 75	0
1	D	148/160 (92%)	-0.37	0 100 100	20, 31, 63, 81	0
1	E	147/160 (91%)	-0.41	1 (0%) 87 84	21, 32, 62, 87	0
1	F	145/160 (90%)	-0.29	4 (2%) 53 43	22, 34, 68, 74	0
All	All	883/960 (91%)	-0.43	7 (0%) 86 81	18, 31, 62, 87	0

All (7) RSRZ outliers are listed below:

Mol	Chain	Res	Type	RSRZ
1	C	7	LEU	3.4
1	F	7	LEU	3.0
1	C	6	GLN	2.7
1	E	131	LEU	2.4
1	F	131	LEU	2.3
1	F	133	ASP	2.2
1	F	139	TYR	2.2

6.2 Non-standard residues in protein, DNA, RNA chains [i](#)

There are no non-standard protein/DNA/RNA residues in this entry.

6.3 Carbohydrates [i](#)

There are no carbohydrates in this entry.

6.4 Ligands ⓘ

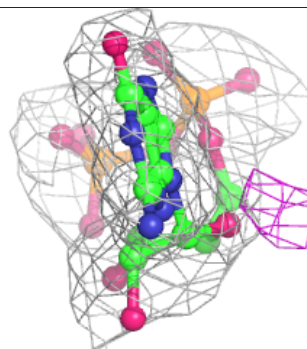
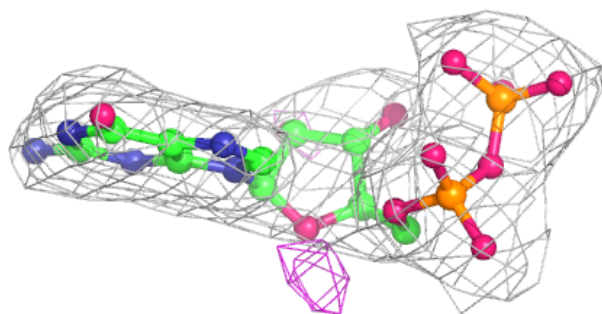
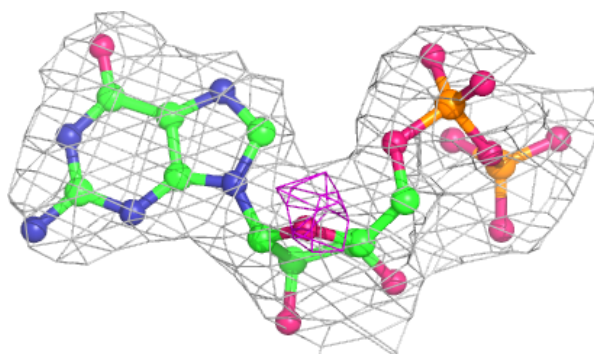
In the following table, the Atoms column lists the number of modelled atoms in the group and the number defined in the chemical component dictionary. The B-factors column lists the minimum, median, 95th percentile and maximum values of B factors of atoms in the group. The column labelled 'Q< 0.9' lists the number of atoms with occupancy less than 0.9.

Mol	Type	Chain	Res	Atoms	RSCC	RSR	B-factors(Å ²)	Q<0.9
4	CL	B	203	1/1	0.96	0.11	27,27,27,27	0
2	GDP	F	200	28/28	0.97	0.14	29,36,45,48	0
4	CL	B	204	1/1	0.97	0.11	37,37,37,37	0
3	COA	D	201	48/48	0.97	0.12	27,40,50,53	0
3	COA	E	201	48/48	0.97	0.13	26,42,49,54	0
2	GDP	A	200	28/28	0.98	0.11	23,27,33,42	0
2	GDP	C	200	28/28	0.98	0.12	29,35,44,45	0
2	GDP	D	200	28/28	0.98	0.13	25,29,36,44	0
2	GDP	E	200	28/28	0.98	0.13	23,30,37,44	0
3	COA	C	201	48/48	0.98	0.11	26,34,45,52	0
2	GDP	B	201	28/28	0.98	0.12	16,22,25,32	0
4	CL	E	202	1/1	0.98	0.09	35,35,35,35	0
4	CL	A	202	1/1	0.98	0.13	28,28,28,28	0
4	CL	F	202	1/1	0.98	0.08	34,34,34,34	0
3	COA	F	201	48/48	0.98	0.13	15,32,39,47	0
3	COA	B	202	48/48	0.98	0.12	19,28,36,47	0
4	CL	D	202	1/1	0.98	0.10	26,26,26,26	0
3	COA	A	201	48/48	0.98	0.11	16,25,29,43	0

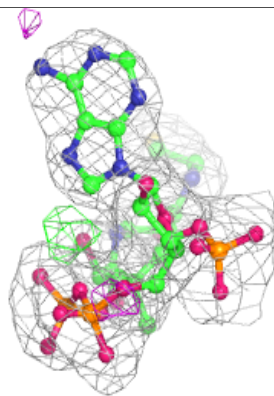
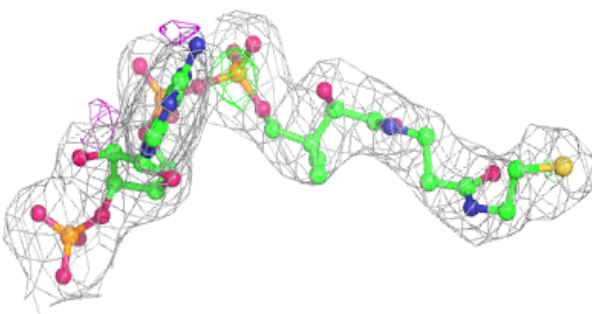
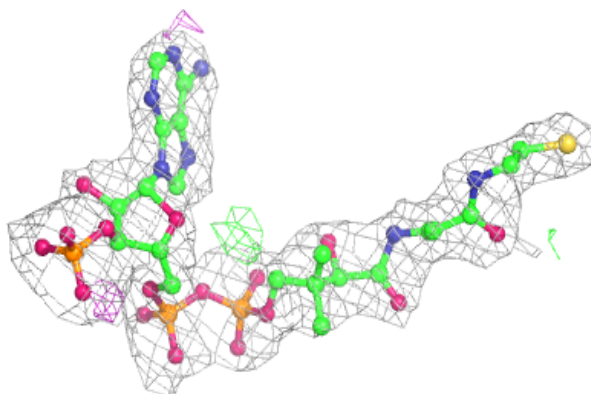
The following is a graphical depiction of the model fit to experimental electron density of all instances of the Ligand of Interest. In addition, ligands with molecular weight > 250 and outliers as shown on the geometry validation Tables will also be included. Each fit is shown from different orientation to approximate a three-dimensional view.

Electron density around GDP F 200:

$2mF_o - DF_c$ (at 0.7 rmsd) in gray
 $mF_o - DF_c$ (at 3 rmsd) in purple (negative)
and green (positive)

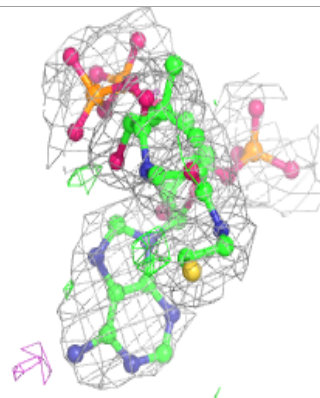
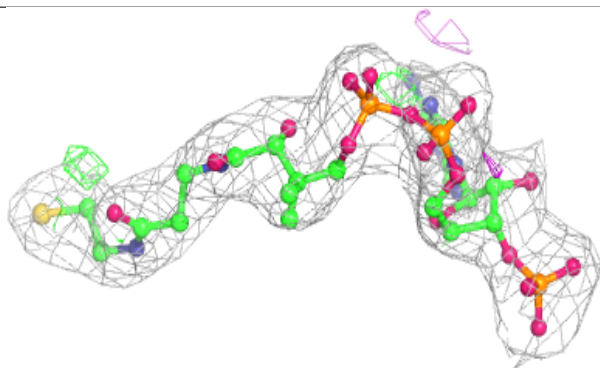
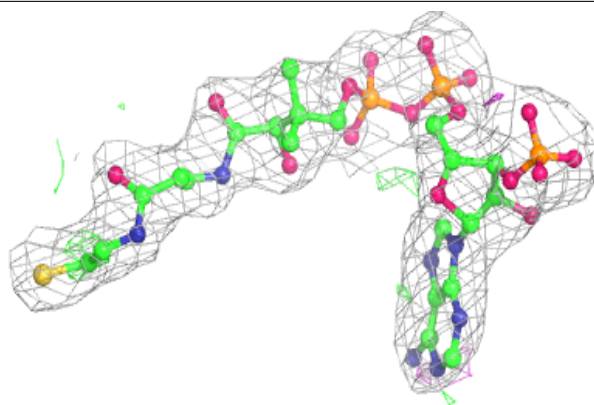
**Electron density around COA D 201:**

$2mF_o - DF_c$ (at 0.7 rmsd) in gray
 $mF_o - DF_c$ (at 3 rmsd) in purple (negative)
and green (positive)

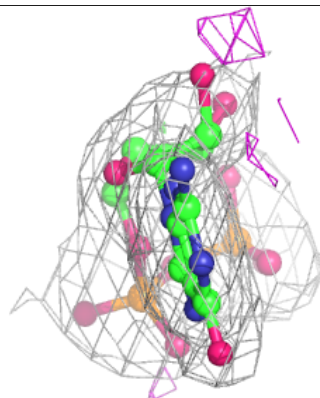
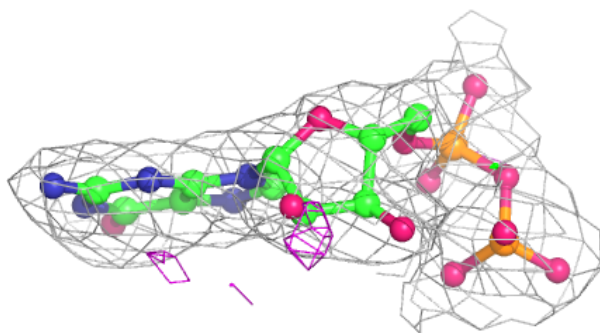
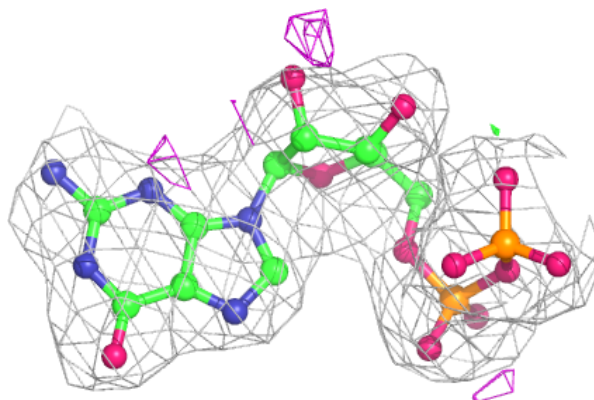


Electron density around COA E 201:

$2mF_o-DF_c$ (at 0.7 rmsd) in gray
 mF_o-DF_c (at 3 rmsd) in purple (negative)
and green (positive)

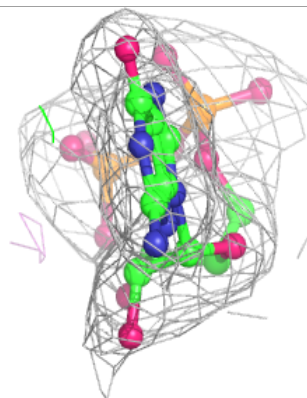
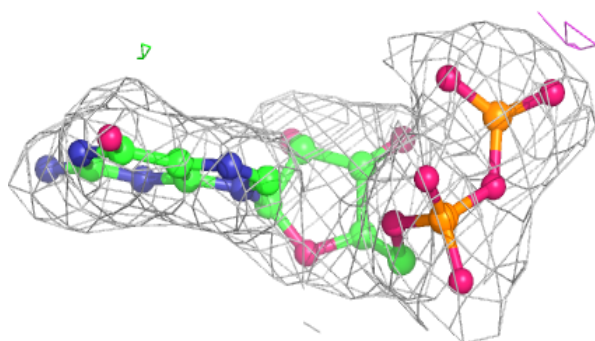
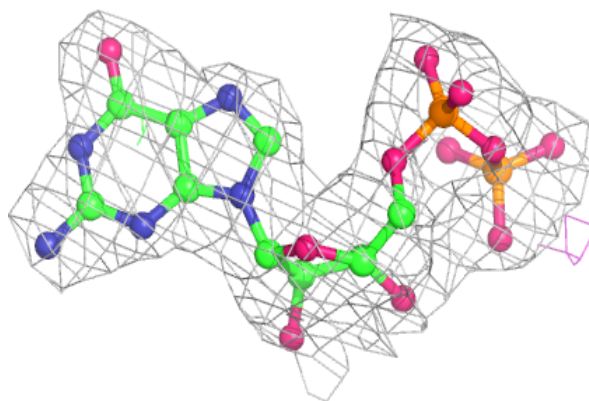
**Electron density around GDP A 200:**

$2mF_o-DF_c$ (at 0.7 rmsd) in gray
 mF_o-DF_c (at 3 rmsd) in purple (negative)
and green (positive)

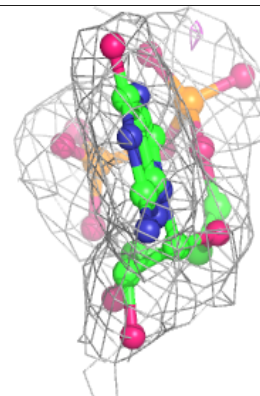
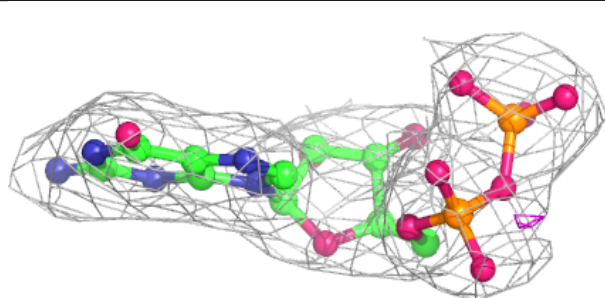
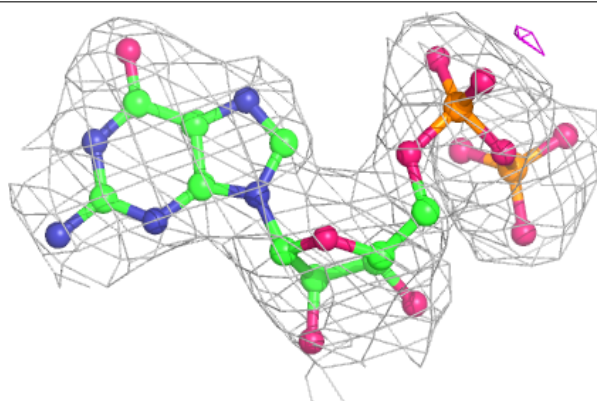


Electron density around GDP C 200:

$2mF_o-DF_c$ (at 0.7 rmsd) in gray
 mF_o-DF_c (at 3 rmsd) in purple (negative)
and green (positive)

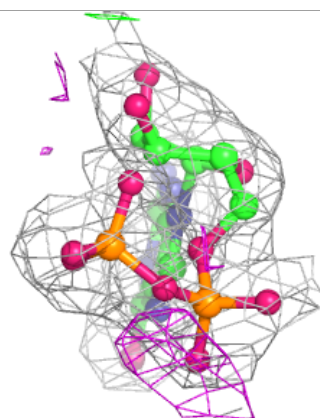
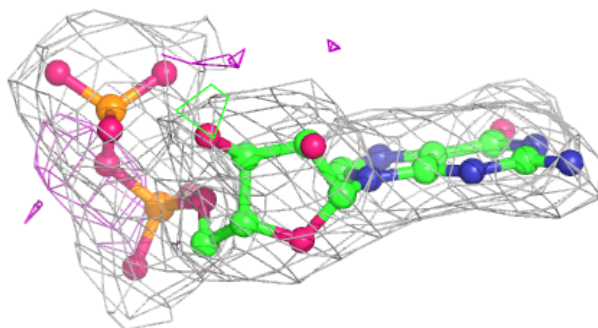
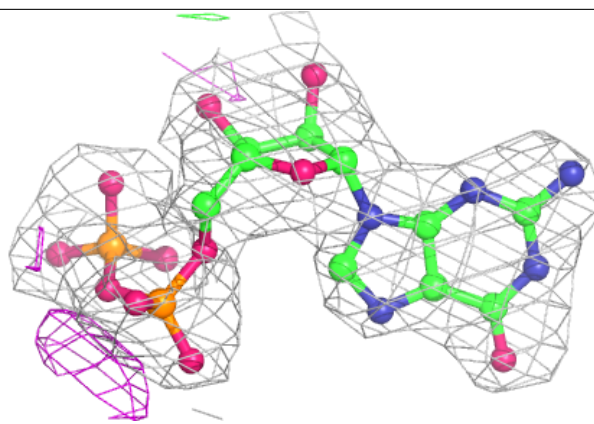
**Electron density around GDP D 200:**

$2mF_o-DF_c$ (at 0.7 rmsd) in gray
 mF_o-DF_c (at 3 rmsd) in purple (negative)
and green (positive)

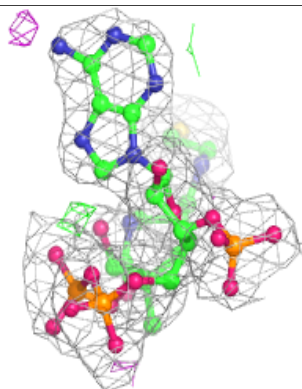
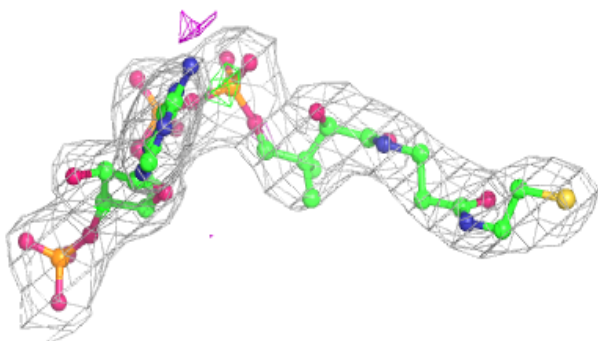
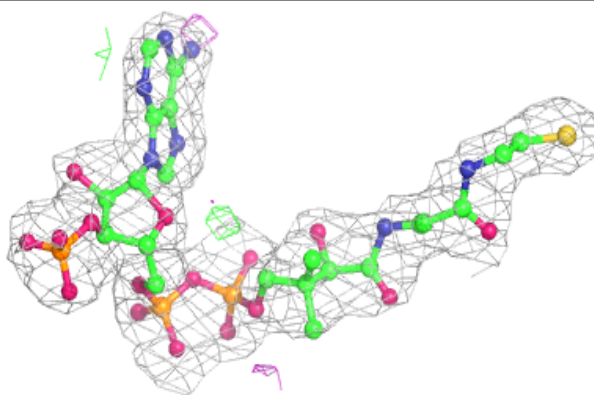


Electron density around GDP E 200:

$2mF_o-DF_c$ (at 0.7 rmsd) in gray
 mF_o-DF_c (at 3 rmsd) in purple (negative)
and green (positive)

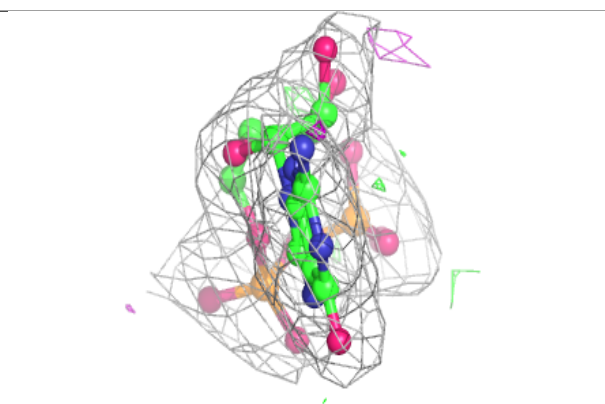
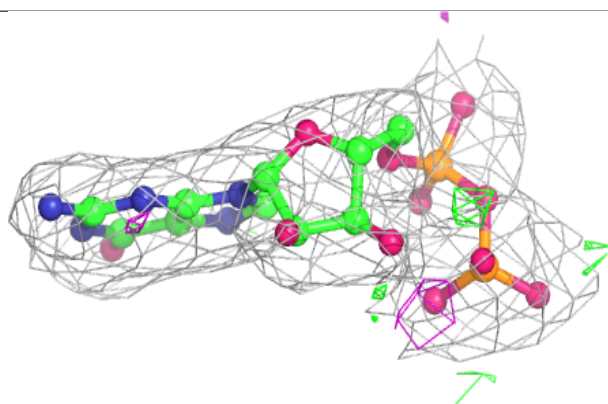
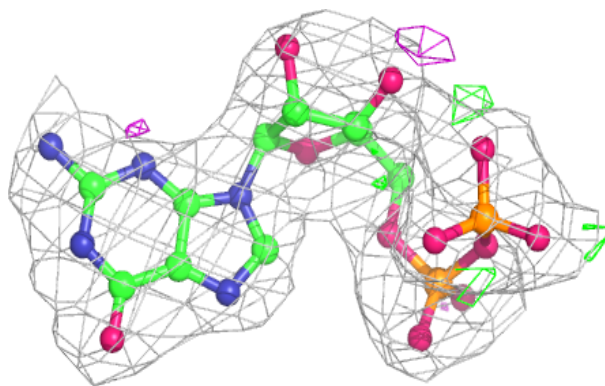
**Electron density around COA C 201:**

$2mF_o-DF_c$ (at 0.7 rmsd) in gray
 mF_o-DF_c (at 3 rmsd) in purple (negative)
and green (positive)

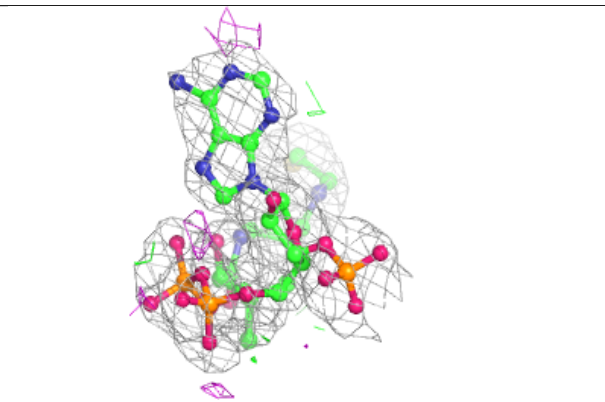
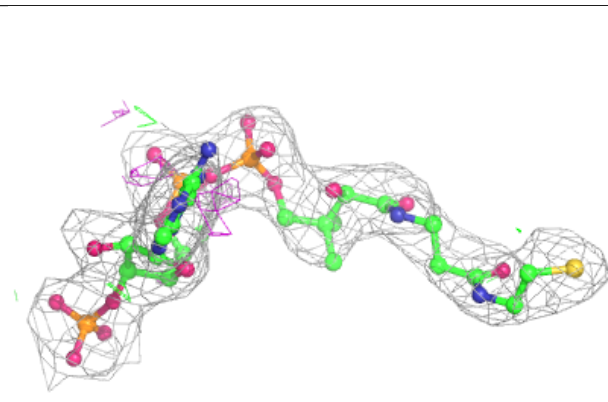
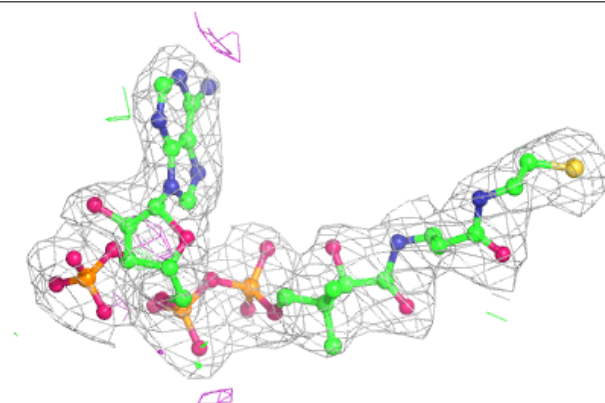


Electron density around GDP B 201:

$2mF_o-DF_c$ (at 0.7 rmsd) in gray
 mF_o-DF_c (at 3 rmsd) in purple (negative)
and green (positive)

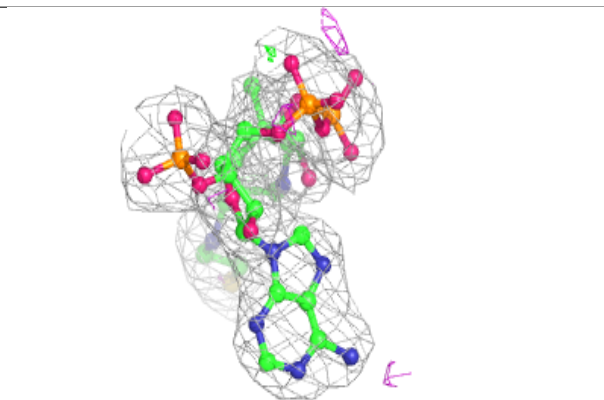
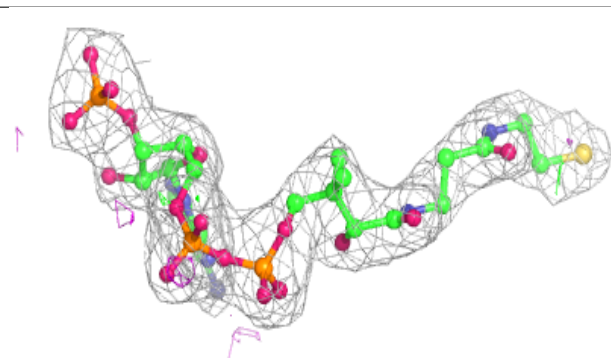
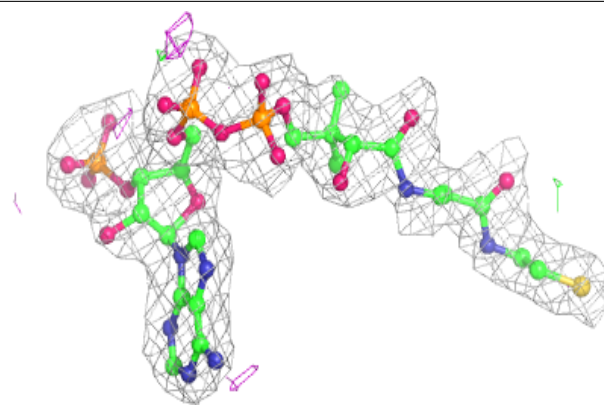
**Electron density around COA F 201:**

$2mF_o-DF_c$ (at 0.7 rmsd) in gray
 mF_o-DF_c (at 3 rmsd) in purple (negative)
and green (positive)

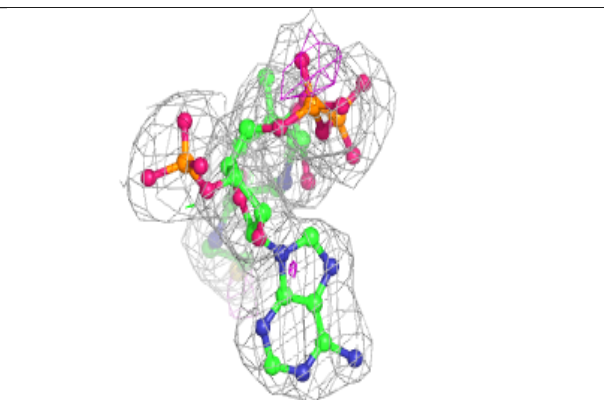
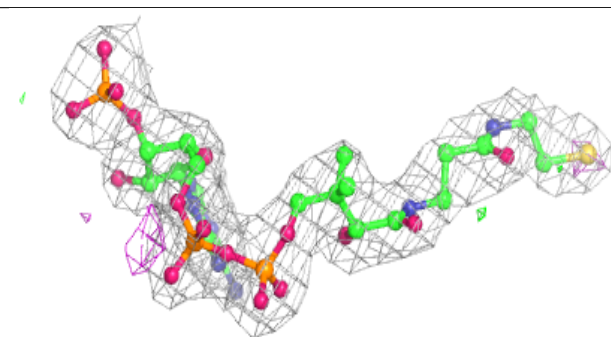
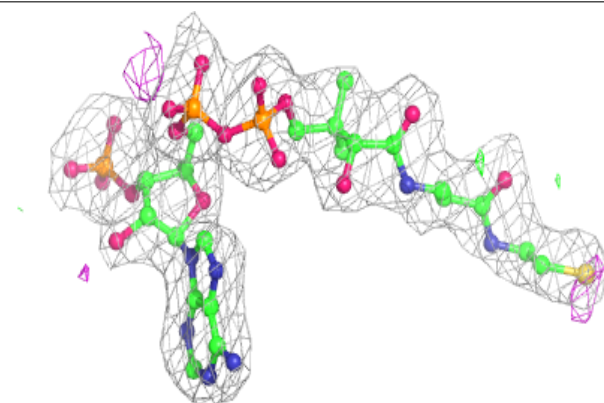


Electron density around COA B 202:

$2mF_o-DF_c$ (at 0.7 rmsd) in gray
 mF_o-DF_c (at 3 rmsd) in purple (negative)
and green (positive)

**Electron density around COA A 201:**

$2mF_o-DF_c$ (at 0.7 rmsd) in gray
 mF_o-DF_c (at 3 rmsd) in purple (negative)
and green (positive)



6.5 Other polymers

There are no such residues in this entry.