



Full wwPDB X-ray Structure Validation Report ⓘ

Dec 15, 2021 – 04:03 PM EST

PDB ID : 7T42
Title : Structure of SARS-CoV-2 3CL protease in complex with inhibitor 2c
Authors : Liu, L.; Lovell, S.; Battaile, K.P.; Chamandi, S.D.; Kim, Y.; Groutas, W.C.;
Chang, K.O.
Deposited on : 2021-12-09
Resolution : 1.60 Å(reported)

This is a Full wwPDB X-ray Structure Validation Report for a publicly released PDB entry.

We welcome your comments at validation@mail.wwpdb.org

A user guide is available at

<https://www.wwpdb.org/validation/2017/XrayValidationReportHelp>

with specific help available everywhere you see the ⓘ symbol.

The following versions of software and data (see [references ⓘ](#)) were used in the production of this report:

MolProbity : 4.02b-467
Mogul : 1.8.5 (274361), CSD as541be (2020)
Xtriage (Phenix) : 1.13
EDS : 2.24
buster-report : 1.1.7 (2018)
Percentile statistics : 20191225.v01 (using entries in the PDB archive December 25th 2019)
Refmac : 5.8.0158
CCP4 : 7.0.044 (Gargrove)
Ideal geometry (proteins) : Engh & Huber (2001)
Ideal geometry (DNA, RNA) : Parkinson et al. (1996)
Validation Pipeline (wwPDB-VP) : 2.24

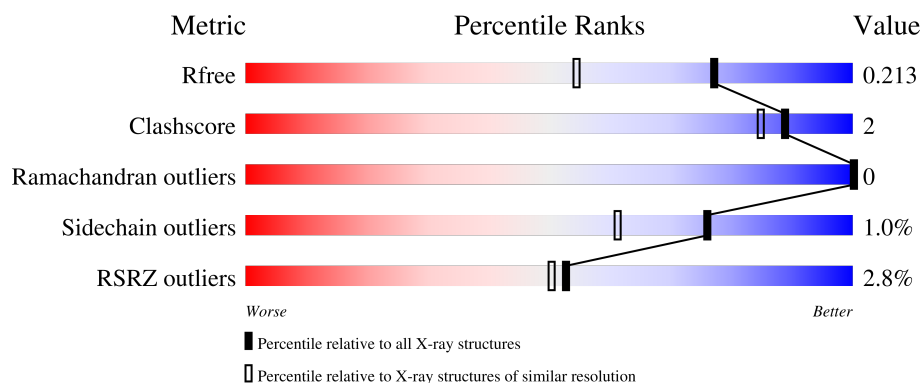
1 Overall quality at a glance

The following experimental techniques were used to determine the structure:

X-RAY DIFFRACTION

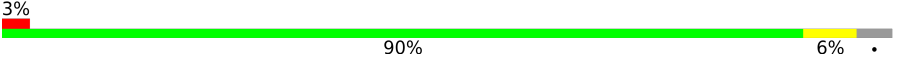
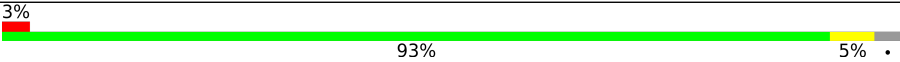
The reported resolution of this entry is 1.60 Å.

Percentile scores (ranging between 0-100) for global validation metrics of the entry are shown in the following graphic. The table shows the number of entries on which the scores are based.



Metric	Whole archive (#Entries)	Similar resolution (#Entries, resolution range(Å))
R_{free}	130704	3398 (1.60-1.60)
Clashscore	141614	3665 (1.60-1.60)
Ramachandran outliers	138981	3564 (1.60-1.60)
Sidechain outliers	138945	3563 (1.60-1.60)
RSRZ outliers	127900	3321 (1.60-1.60)

The table below summarises the geometric issues observed across the polymeric chains and their fit to the electron density. The red, orange, yellow and green segments of the lower bar indicate the fraction of residues that contain outliers for ≥ 3 , 2, 1 and 0 types of geometric quality criteria respectively. A grey segment represents the fraction of residues that are not modelled. The numeric value for each fraction is indicated below the corresponding segment, with a dot representing fractions $\leq 5\%$. The upper red bar (where present) indicates the fraction of residues that have poor fit to the electron density. The numeric value is given above the bar.

Mol	Chain	Length	Quality of chain
1	A	309	
1	B	309	

2 Entry composition

There are 5 unique types of molecules in this entry. The entry contains 4968 atoms, of which 0 are hydrogens and 0 are deuteriums.

In the tables below, the ZeroOcc column contains the number of atoms modelled with zero occupancy, the AltConf column contains the number of residues with at least one atom in alternate conformation and the Trace column contains the number of residues modelled with at most 2 atoms.

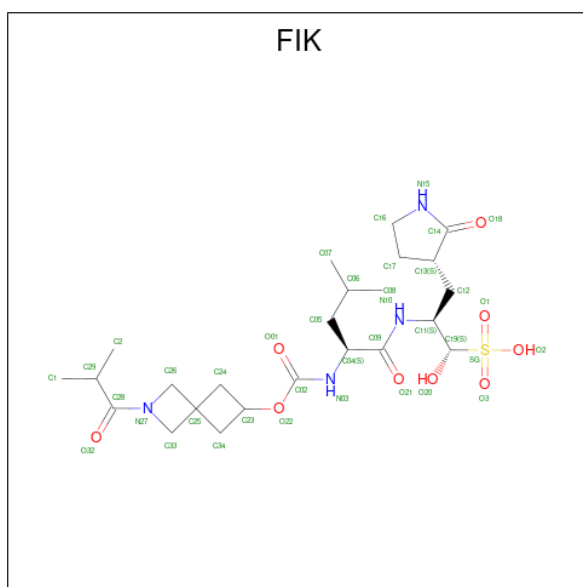
- Molecule 1 is a protein called 3C-like proteinase.

Mol	Chain	Residues	Atoms					ZeroOcc	AltConf	Trace
1	A	298	Total	C	N	O	S	0	7	0
			2274	1451	374	425	24			
1	B	301	Total	C	N	O	S	0	1	0
			2289	1453	387	427	22			

There are 8 discrepancies between the modelled and reference sequences:

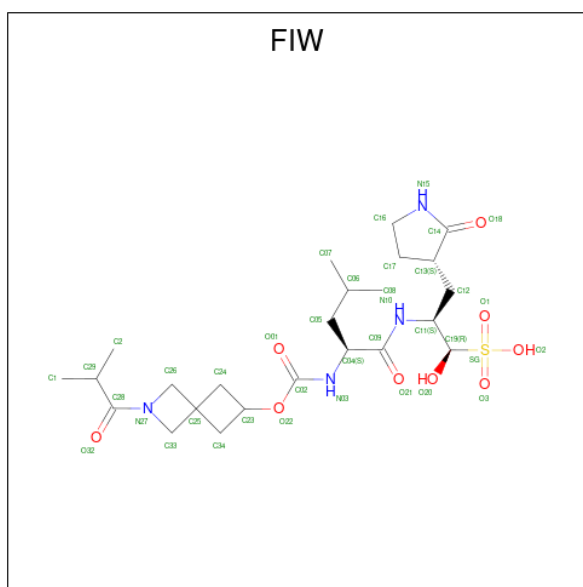
Chain	Residue	Modelled	Actual	Comment	Reference
A	-3	SER	-	expression tag	UNP P0DTD1
A	-2	ASN	-	expression tag	UNP P0DTD1
A	-1	ILE	-	expression tag	UNP P0DTD1
A	0	GLY	-	expression tag	UNP P0DTD1
B	-3	SER	-	expression tag	UNP P0DTD1
B	-2	ASN	-	expression tag	UNP P0DTD1
B	-1	ILE	-	expression tag	UNP P0DTD1
B	0	GLY	-	expression tag	UNP P0DTD1

- Molecule 2 is (1S,2S)-2-[(N-{[(2-acetyl-2-azaspiro[3.3]heptan-6-yl)oxy]carbonyl}-L-leucyl)amino]-1-hydroxy-3-[(3S)-2-oxopyrrolidin-3-yl]propane-1-sulfonic acid (three-letter code: FIK) (formula: C₂₄H₄₀N₄O₉S).



Mol	Chain	Residues	Atoms				ZeroOcc	AltConf
2	A	1	Total	C	N	O	0	1
			32	22	4	6		
2	B	1	Total	C	N	O	0	1
			29	20	4	5		

- Molecule 3 is (1R,2S)-1-hydroxy-2-{[N-({[2-(2-methylpropanoyl)-2-azaspiro[3.3]heptan-6-yl]oxy}carbonyl)-L-leucyl]amino}-3-[(3S)-2-oxopyrrolidin-3-yl]propane-1-sulfonic acid (three-letter code: FIW) (formula: C₂₄H₄₀N₄O₉S).



Mol	Chain	Residues	Atoms				ZeroOcc	AltConf
3	A	1	Total	C	N	O	0	1
			32	22	4	6		

Continued on next page...

Continued from previous page...

Mol	Chain	Residues	Atoms				ZeroOcc	AltConf
3	B	1	Total	C	N	O	0	1
			29	20	4	5		

- Molecule 4 is TETRAETHYLENE GLYCOL (three-letter code: PG4) (formula: $C_8H_{18}O_5$).



Mol	Chain	Residues	Atoms			ZeroOcc	AltConf
4	B	1	Total	C	O	0	0
			13	8	5		
4	B	1	Total	C	O	0	0
			13	8	5		

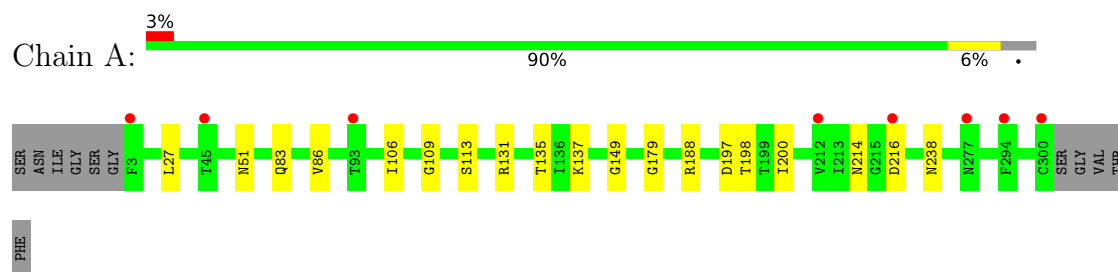
- Molecule 5 is water.

Mol	Chain	Residues	Atoms		ZeroOcc	AltConf
5	A	117	Total	O	0	0
			117	117		
5	B	140	Total	O	0	0
			140	140		

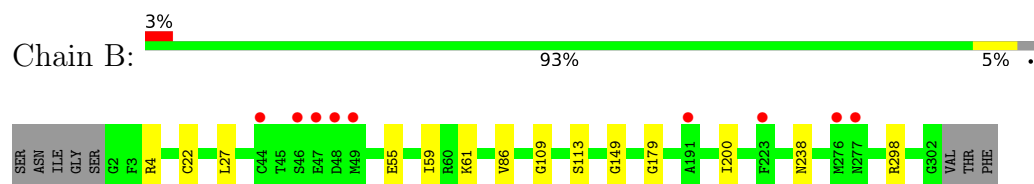
3 Residue-property plots [i](#)

These plots are drawn for all protein, RNA, DNA and oligosaccharide chains in the entry. The first graphic for a chain summarises the proportions of the various outlier classes displayed in the second graphic. The second graphic shows the sequence view annotated by issues in geometry and electron density. Residues are color-coded according to the number of geometric quality criteria for which they contain at least one outlier: green = 0, yellow = 1, orange = 2 and red = 3 or more. A red dot above a residue indicates a poor fit to the electron density ($RSRZ > 2$). Stretches of 2 or more consecutive residues without any outlier are shown as a green connector. Residues present in the sample, but not in the model, are shown in grey.

- Molecule 1: 3C-like proteinase



- Molecule 1: 3C-like proteinase



4 Data and refinement statistics

Property	Value	Source
Space group	P 1 21 1	Depositor
Cell constants a, b, c, α , β , γ	55.10Å 98.57Å 58.69Å 90.00° 107.72° 90.00°	Depositor
Resolution (Å)	36.97 – 1.60 46.33 – 1.60	Depositor EDS
% Data completeness (in resolution range)	99.6 (36.97-1.60) 99.7 (46.33-1.60)	Depositor EDS
R_{merge}	0.09	Depositor
R_{sym}	(Not available)	Depositor
$\langle I/\sigma(I) \rangle$ ¹	1.97 (at 1.60Å)	Xtriage
Refinement program	PHENIX DEV_4302	Depositor
R, R_{free}	0.180 , 0.212 0.187 , 0.213	Depositor DCC
R_{free} test set	3685 reflections (4.70%)	wwPDB-VP
Wilson B-factor (Å ²)	21.6	Xtriage
Anisotropy	0.235	Xtriage
Bulk solvent k_{sol} (e/Å ³), B_{sol} (Å ²)	0.36 , 50.0	EDS
L-test for twinning ²	$\langle L \rangle = 0.50$, $\langle L^2 \rangle = 0.33$	Xtriage
Estimated twinning fraction	No twinning to report.	Xtriage
F_o, F_c correlation	0.97	EDS
Total number of atoms	4968	wwPDB-VP
Average B, all atoms (Å ²)	29.0	wwPDB-VP

Xtriage's analysis on translational NCS is as follows: *The largest off-origin peak in the Patterson function is 5.64% of the height of the origin peak. No significant pseudotranslation is detected.*

¹Intensities estimated from amplitudes.

²Theoretical values of $\langle |L| \rangle$, $\langle L^2 \rangle$ for acentric reflections are 0.5, 0.333 respectively for untwinned datasets, and 0.375, 0.2 for perfectly twinned datasets.

5 Model quality

5.1 Standard geometry

Bond lengths and bond angles in the following residue types are not validated in this section: FIW, FIK, PG4

The Z score for a bond length (or angle) is the number of standard deviations the observed value is removed from the expected value. A bond length (or angle) with $|Z| > 5$ is considered an outlier worth inspection. RMSZ is the root-mean-square of all Z scores of the bond lengths (or angles).

Mol	Chain	Bond lengths		Bond angles	
		RMSZ	$\# Z > 5$	RMSZ	$\# Z > 5$
1	A	0.38	0/2342	0.60	0/3194
1	B	0.41	0/2343	0.63	0/3190
All	All	0.40	0/4685	0.61	0/6384

There are no bond length outliers.

There are no bond angle outliers.

There are no chirality outliers.

There are no planarity outliers.

5.2 Too-close contacts

In the following table, the Non-H and H(model) columns list the number of non-hydrogen atoms and hydrogen atoms in the chain respectively. The H(added) column lists the number of hydrogen atoms added and optimized by MolProbity. The Clashes column lists the number of clashes within the asymmetric unit, whereas Symm-Clashes lists symmetry-related clashes.

Mol	Chain	Non-H	H(model)	H(added)	Clashes	Symm-Clashes
1	A	2274	0	2195	11	0
1	B	2289	0	2210	7	0
2	A	32	0	0	0	0
2	B	29	0	0	0	0
3	A	32	0	0	0	0
3	B	29	0	0	0	0
4	B	26	0	36	0	0
5	A	117	0	0	0	0
5	B	140	0	0	1	0
All	All	4968	0	4441	17	0

The all-atom clashscore is defined as the number of clashes found per 1000 atoms (including

hydrogen atoms). The all-atom clashscore for this structure is 2.

All (17) close contacts within the same asymmetric unit are listed below, sorted by their clash magnitude.

Atom-1	Atom-2	Interatomic distance (Å)	Clash overlap (Å)
1:B:22:CYS:SG	1:B:61:LYS:NZ	2.57	0.76
1:A:198:THR:HG22	1:A:238[A]:ASN:OD1	1.95	0.66
1:A:197:ASP:O	1:A:238[A]:ASN:ND2	2.35	0.60
1:A:137:LYS:O	1:B:4:ARG:NH1	2.43	0.52
1:B:109:GLY:HA2	1:B:200:ILE:HD13	1.90	0.52
1:A:86[B]:VAL:HG13	1:A:179:GLY:HA2	1.91	0.51
1:A:109:GLY:HA2	1:A:200:ILE:HD13	1.94	0.49
1:B:55:GLU:O	1:B:59:ILE:HG12	2.12	0.48
1:A:106:ILE:HD12	1:A:106:ILE:O	2.14	0.47
1:B:113:SER:O	1:B:149:GLY:HA2	2.16	0.45
1:B:86[B]:VAL:HG23	1:B:179:GLY:HA2	1.98	0.45
1:B:298:ARG:NH2	5:B:505:HOH:O	2.49	0.43
1:A:51:ASN:OD1	1:A:188:ARG:NH2	2.52	0.43
1:A:83:GLN:O	1:A:86[B]:VAL:HG22	2.19	0.42
1:A:131:ARG:HG2	1:A:135:THR:O	2.20	0.42
1:A:106:ILE:HD12	1:A:106:ILE:C	2.40	0.42
1:A:113:SER:O	1:A:149:GLY:HA2	2.20	0.41

There are no symmetry-related clashes.

5.3 Torsion angles ⓘ

5.3.1 Protein backbone ⓘ

In the following table, the Percentiles column shows the percent Ramachandran outliers of the chain as a percentile score with respect to all X-ray entries followed by that with respect to entries of similar resolution.

The Analysed column shows the number of residues for which the backbone conformation was analysed, and the total number of residues.

Mol	Chain	Analysed	Favoured	Allowed	Outliers	Percentiles	
1	A	303/309 (98%)	298 (98%)	5 (2%)	0	100	100
1	B	300/309 (97%)	294 (98%)	6 (2%)	0	100	100
All	All	603/618 (98%)	592 (98%)	11 (2%)	0	100	100

There are no Ramachandran outliers to report.

5.3.2 Protein sidechains [i](#)

In the following table, the Percentiles column shows the percent sidechain outliers of the chain as a percentile score with respect to all X-ray entries followed by that with respect to entries of similar resolution.

The Analysed column shows the number of residues for which the sidechain conformation was analysed, and the total number of residues.

Mol	Chain	Analysed	Rotameric	Outliers	Percentiles	
1	A	247/265 (93%)	244 (99%)	3 (1%)	71	54
1	B	248/265 (94%)	246 (99%)	2 (1%)	81	70
All	All	495/530 (93%)	490 (99%)	5 (1%)	76	61

All (5) residues with a non-rotameric sidechain are listed below:

Mol	Chain	Res	Type
1	A	27	LEU
1	A	214	ASN
1	A	216	ASP
1	B	27	LEU
1	B	238	ASN

Sometimes sidechains can be flipped to improve hydrogen bonding and reduce clashes. There are no such sidechains identified.

5.3.3 RNA [i](#)

There are no RNA molecules in this entry.

5.4 Non-standard residues in protein, DNA, RNA chains [i](#)

There are no non-standard protein/DNA/RNA residues in this entry.

5.5 Carbohydrates [i](#)

There are no monosaccharides in this entry.

5.6 Ligand geometry [i](#)

6 ligands are modelled in this entry.

In the following table, the Counts columns list the number of bonds (or angles) for which Mogul statistics could be retrieved, the number of bonds (or angles) that are observed in the model and the number of bonds (or angles) that are defined in the Chemical Component Dictionary. The Link column lists molecule types, if any, to which the group is linked. The Z score for a bond length (or angle) is the number of standard deviations the observed value is removed from the expected value. A bond length (or angle) with $|Z| > 2$ is considered an outlier worth inspection. RMSZ is the root-mean-square of all Z scores of the bond lengths (or angles).

Mol	Type	Chain	Res	Link	Bond lengths			Bond angles		
					Counts	RMSZ	# Z > 2	Counts	RMSZ	# Z > 2
2	FIK	A	501[A]	1	34,34,40	2.26	10 (29%)	37,49,60	2.44	10 (27%)
4	PG4	B	401	-	12,12,12	0.10	0	11,11,11	0.73	0
2	FIK	B	403[A]	1	29,31,40	1.97	9 (31%)	32,44,60	2.18	9 (28%)
3	FIW	A	502[B]	1	34,34,40	2.06	7 (20%)	37,49,60	2.69	11 (29%)
3	FIW	B	404[B]	1	29,31,40	2.11	9 (31%)	32,44,60	2.18	6 (18%)
4	PG4	B	402	-	12,12,12	0.14	0	11,11,11	0.67	0

In the following table, the Chirals column lists the number of chiral outliers, the number of chiral centers analysed, the number of these observed in the model and the number defined in the Chemical Component Dictionary. Similar counts are reported in the Torsion and Rings columns. '-' means no outliers of that kind were identified.

Mol	Type	Chain	Res	Link	Chirals	Torsions	Rings
2	FIK	A	501[A]	1	-	0/28/60/72	0/3/3/3
4	PG4	B	401	-	-	0/10/10/10	-
2	FIK	B	403[A]	1	-	2/26/54/72	0/3/3/3
3	FIW	A	502[B]	1	-	2/28/60/72	0/3/3/3
3	FIW	B	404[B]	1	-	0/26/54/72	0/3/3/3
4	PG4	B	402	-	-	2/10/10/10	-

All (35) bond length outliers are listed below:

Mol	Chain	Res	Type	Atoms	Z	Observed(Å)	Ideal(Å)
2	B	403[A]	FIK	C14-N15	6.83	1.40	1.33
3	B	404[B]	FIW	C14-N15	6.83	1.40	1.33
3	A	502[B]	FIW	C14-N15	6.66	1.40	1.33
2	A	501[A]	FIK	C14-N15	6.64	1.40	1.33
2	A	501[A]	FIK	C26-N27	6.33	1.55	1.47
3	A	502[B]	FIW	C33-C25	5.18	1.58	1.54
2	A	501[A]	FIK	C33-C25	4.79	1.58	1.54
3	A	502[B]	FIW	C26-C25	-4.01	1.50	1.54
3	B	404[B]	FIW	C33-C25	3.74	1.57	1.54
2	B	403[A]	FIK	C33-C25	3.55	1.57	1.54

Continued on next page...

Continued from previous page...

Mol	Chain	Res	Type	Atoms	Z	Observed(Å)	Ideal(Å)
3	B	404[B]	FIW	C04-C09	3.28	1.61	1.52
2	A	501[A]	FIK	C28-N27	3.28	1.44	1.35
3	A	502[B]	FIW	C04-C09	3.23	1.61	1.52
3	B	404[B]	FIW	C19-C11	3.00	1.57	1.52
2	A	501[A]	FIK	C24-C25	2.87	1.57	1.54
3	B	404[B]	FIW	C24-C25	2.81	1.57	1.54
3	B	404[B]	FIW	C09-N10	2.67	1.39	1.34
2	B	403[A]	FIK	C24-C25	2.63	1.56	1.54
3	A	502[B]	FIW	C09-N10	2.58	1.39	1.34
3	B	404[B]	FIW	O22-C02	2.51	1.39	1.35
3	A	502[B]	FIW	O22-C23	-2.49	1.40	1.46
2	B	403[A]	FIK	O22-C02	2.48	1.39	1.35
2	A	501[A]	FIK	C29-C28	2.43	1.60	1.50
2	A	501[A]	FIK	C04-C09	2.39	1.59	1.52
2	A	501[A]	FIK	O22-C23	-2.36	1.40	1.46
2	A	501[A]	FIK	C34-C25	2.35	1.56	1.54
2	B	403[A]	FIK	C04-C09	2.34	1.59	1.52
2	B	403[A]	FIK	C19-C11	2.33	1.56	1.52
2	A	501[A]	FIK	C09-N10	2.23	1.38	1.34
2	B	403[A]	FIK	C02-N03	2.18	1.40	1.34
3	B	404[B]	FIW	O22-C23	-2.18	1.41	1.46
2	B	403[A]	FIK	O22-C23	-2.17	1.41	1.46
3	A	502[B]	FIW	O22-C02	2.12	1.38	1.35
3	B	404[B]	FIW	C26-C25	2.06	1.56	1.54
2	B	403[A]	FIK	C26-C25	2.01	1.56	1.54

All (36) bond angle outliers are listed below:

Mol	Chain	Res	Type	Atoms	Z	Observed(°)	Ideal(°)
3	A	502[B]	FIW	C33-N27-C26	-9.13	85.58	95.19
3	A	502[B]	FIW	O22-C02-N03	8.92	121.89	110.32
3	B	404[B]	FIW	O22-C02-N03	8.64	121.53	110.32
2	B	403[A]	FIK	O22-C02-N03	8.29	121.07	110.32
2	A	501[A]	FIK	C33-N27-C26	-7.76	87.02	95.19
2	A	501[A]	FIK	O22-C02-N03	6.81	119.15	110.32
3	A	502[B]	FIW	O22-C02-O01	-6.14	115.28	124.53
3	B	404[B]	FIW	O22-C02-O01	-5.34	116.49	124.53
2	B	403[A]	FIK	O22-C02-O01	-5.16	116.75	124.53
2	A	501[A]	FIK	C23-O22-C02	5.03	123.69	116.48
2	A	501[A]	FIK	O22-C02-O01	-4.13	118.30	124.53
2	A	501[A]	FIK	C29-C28-N27	4.12	123.05	118.26
2	A	501[A]	FIK	C34-C25-C33	3.00	129.65	120.79

Continued on next page...

Continued from previous page...

Mol	Chain	Res	Type	Atoms	Z	Observed(°)	Ideal(°)
3	A	502[B]	FIW	C33-C25-C26	-2.78	81.34	85.68
2	B	403[A]	FIK	C23-O22-C02	2.70	120.35	116.48
3	A	502[B]	FIW	C04-C09-N10	2.50	122.18	116.70
2	B	403[A]	FIK	O18-C14-C13	-2.47	123.33	126.23
3	A	502[B]	FIW	O32-C28-N27	2.45	124.03	121.02
2	B	403[A]	FIK	C12-C13-C14	2.38	118.12	112.89
3	A	502[B]	FIW	C23-O22-C02	2.37	119.87	116.48
3	B	404[B]	FIW	C12-C13-C14	2.33	118.00	112.89
2	B	403[A]	FIK	C04-C09-N10	2.31	121.77	116.70
3	B	404[B]	FIW	O18-C14-C13	-2.30	123.53	126.23
2	A	501[A]	FIK	C04-C09-N10	2.29	121.73	116.70
3	B	404[B]	FIW	C04-C09-N10	2.29	121.72	116.70
2	B	403[A]	FIK	C17-C16-N15	2.27	106.75	103.43
2	A	501[A]	FIK	C12-C13-C17	-2.22	109.13	117.31
3	A	502[B]	FIW	C12-C13-C17	-2.20	109.23	117.31
2	A	501[A]	FIK	O18-C14-C13	-2.18	123.68	126.23
2	B	403[A]	FIK	O21-C09-N10	-2.17	118.91	122.93
2	B	403[A]	FIK	C12-C13-C17	-2.11	109.53	117.31
3	A	502[B]	FIW	O18-C14-C13	-2.11	123.76	126.23
3	A	502[B]	FIW	C16-N15-C14	-2.10	109.73	113.84
3	B	404[B]	FIW	C16-N15-C14	-2.09	109.73	113.84
2	A	501[A]	FIK	C16-N15-C14	-2.09	109.74	113.84
3	A	502[B]	FIW	C12-C13-C14	2.01	117.30	112.89

There are no chirality outliers.

All (6) torsion outliers are listed below:

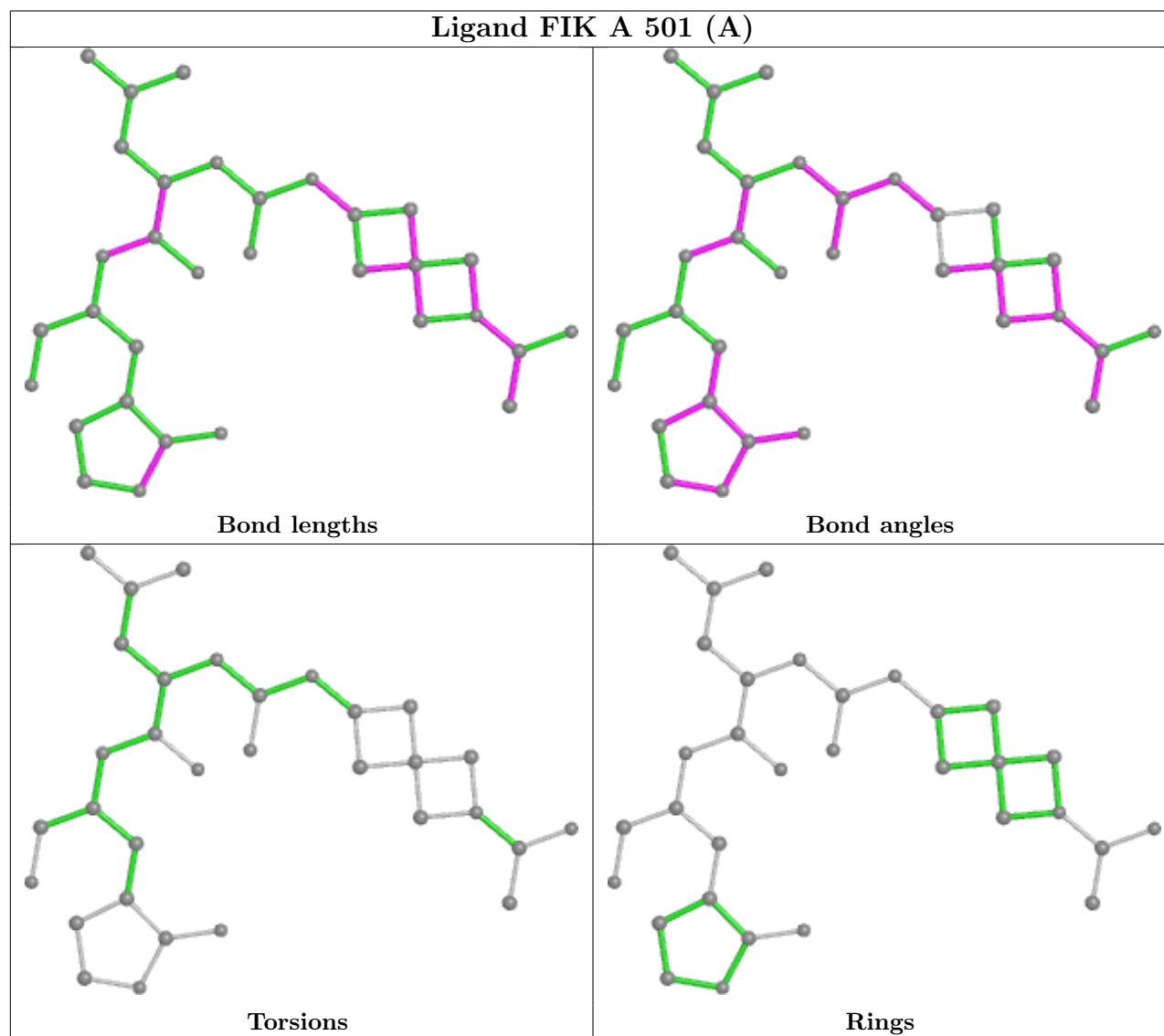
Mol	Chain	Res	Type	Atoms
3	A	502[B]	FIW	N03-C02-O22-C23
3	A	502[B]	FIW	O01-C02-O22-C23
4	B	402	PG4	O1-C1-C2-O2
4	B	402	PG4	O2-C3-C4-O3
2	B	403[A]	FIK	N03-C02-O22-C23
2	B	403[A]	FIK	O01-C02-O22-C23

There are no ring outliers.

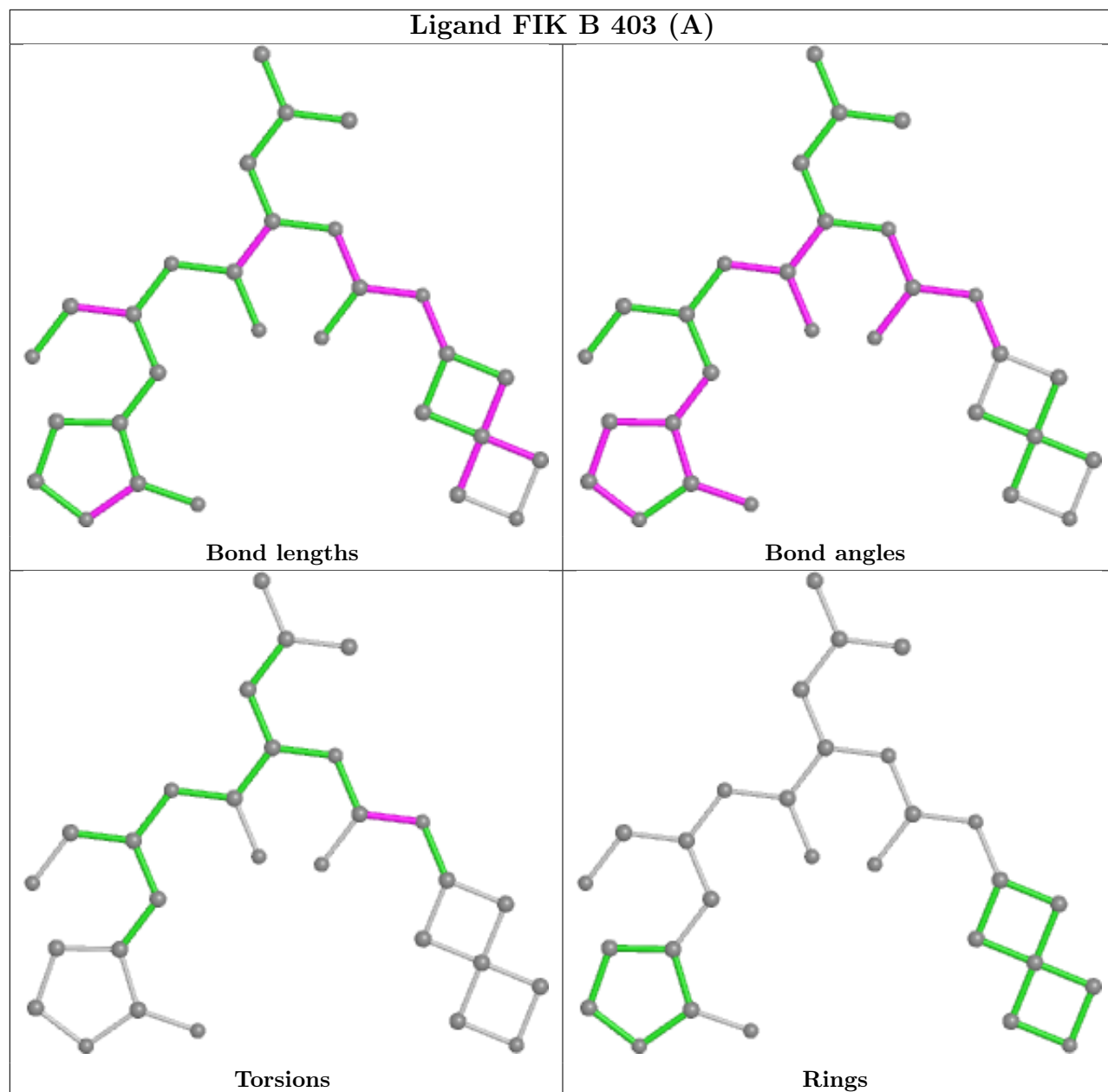
No monomer is involved in short contacts.

The following is a two-dimensional graphical depiction of Mogul quality analysis of bond lengths, bond angles, torsion angles, and ring geometry for all instances of the Ligand of Interest. In addition, ligands with molecular weight > 250 and outliers as shown on the validation Tables will also be included. For torsion angles, if less than 5% of the Mogul distribution of torsion angles is

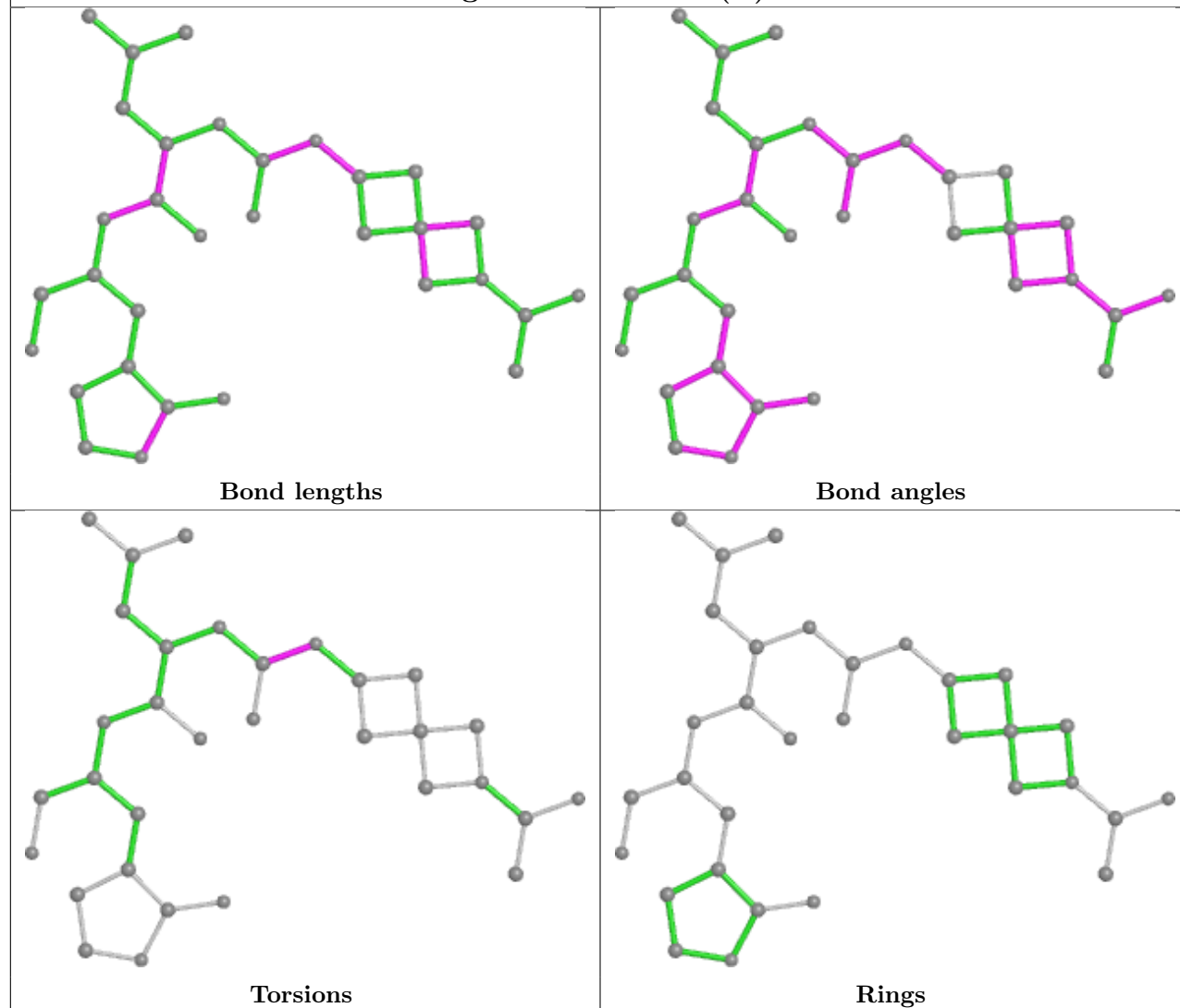
within 10 degrees of the torsion angle in question, then that torsion angle is considered an outlier. Any bond that is central to one or more torsion angles identified as an outlier by Mogul will be highlighted in the graph. For rings, the root-mean-square deviation (RMSD) between the ring in question and similar rings identified by Mogul is calculated over all ring torsion angles. If the average RMSD is greater than 60 degrees and the minimal RMSD between the ring in question and any Mogul-identified rings is also greater than 60 degrees, then that ring is considered an outlier. The outliers are highlighted in purple. The color gray indicates Mogul did not find sufficient equivalents in the CSD to analyse the geometry.

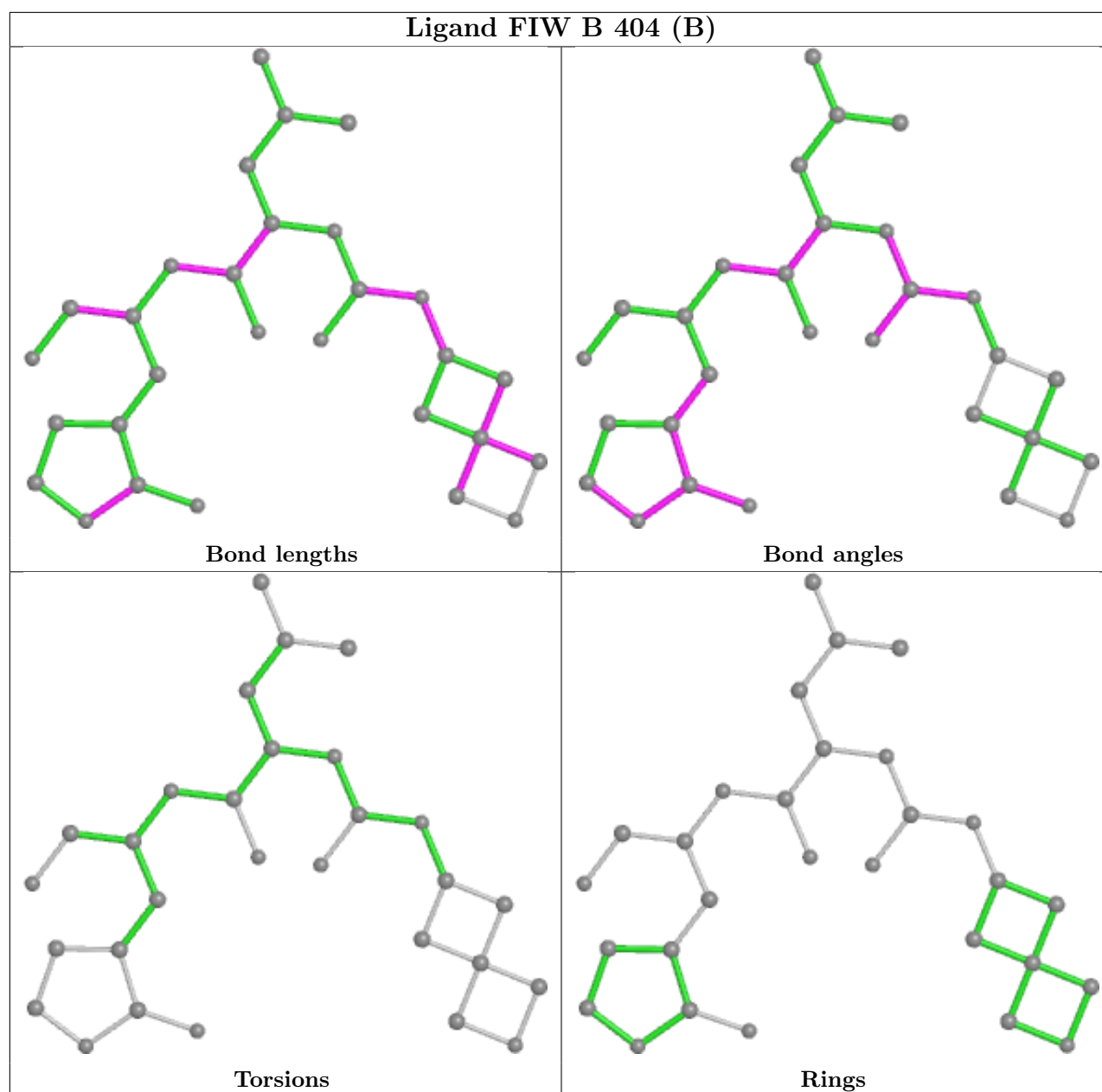


Ligand FIK B 403 (A)



Ligand FIW A 502 (B)





5.7 Other polymers [i](#)

There are no such residues in this entry.

5.8 Polymer linkage issues [i](#)

There are no chain breaks in this entry.

6 Fit of model and data [i](#)

6.1 Protein, DNA and RNA chains [i](#)

In the following table, the column labelled ‘#RSRZ > 2’ contains the number (and percentage) of RSRZ outliers, followed by percent RSRZ outliers for the chain as percentile scores relative to all X-ray entries and entries of similar resolution. The OWAB column contains the minimum, median, 95th percentile and maximum values of the occupancy-weighted average B-factor per residue. The column labelled ‘Q < 0.9’ lists the number of (and percentage) of residues with an average occupancy less than 0.9.

Mol	Chain	Analysed	<RSRZ>	#RSRZ>2	OWAB(Å ²)	Q<0.9
1	A	298/309 (96%)	0.19	8 (2%) 54 52	16, 29, 53, 73	0
1	B	301/309 (97%)	-0.01	9 (2%) 50 48	16, 24, 49, 61	0
All	All	599/618 (96%)	0.09	17 (2%) 53 50	16, 27, 52, 73	0

All (17) RSRZ outliers are listed below:

Mol	Chain	Res	Type	RSRZ
1	A	300	CYS	4.6
1	A	294	PHE	3.1
1	A	216	ASP	3.0
1	B	277	ASN	2.8
1	B	46	SER	2.7
1	B	48	ASP	2.6
1	B	191	ALA	2.6
1	B	276	MET	2.5
1	A	45	THR	2.4
1	B	44	CYS	2.3
1	B	47	GLU	2.2
1	A	93	THR	2.2
1	A	277	ASN	2.2
1	B	223	PHE	2.2
1	B	49	MET	2.1
1	A	212	VAL	2.1
1	A	3	PHE	2.0

6.2 Non-standard residues in protein, DNA, RNA chains [i](#)

There are no non-standard protein/DNA/RNA residues in this entry.

6.3 Carbohydrates [i](#)

There are no monosaccharides in this entry.

6.4 Ligands [i](#)

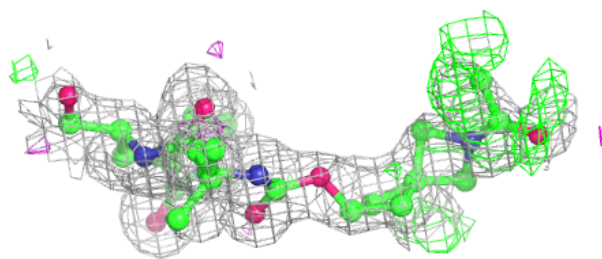
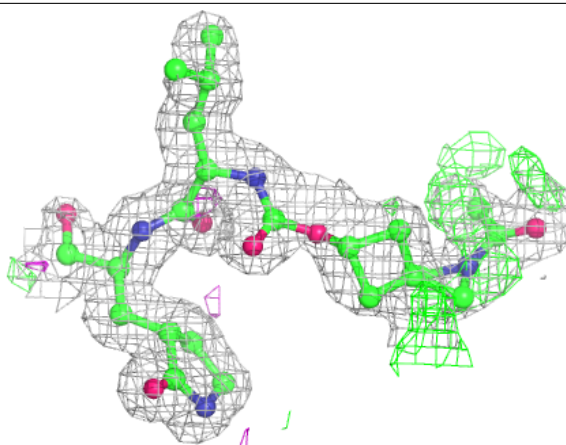
In the following table, the Atoms column lists the number of modelled atoms in the group and the number defined in the chemical component dictionary. The B-factors column lists the minimum, median, 95th percentile and maximum values of B factors of atoms in the group. The column labelled 'Q< 0.9' lists the number of atoms with occupancy less than 0.9.

Mol	Type	Chain	Res	Atoms	RSCC	RSR	B-factors(\AA^2)	Q<0.9
4	PG4	B	402	13/13	0.85	0.13	35,40,45,51	0
3	FIW	A	502[B]	32/38	0.91	0.14	18,23,34,39	32
3	FIW	B	404[B]	29/38	0.91	0.13	24,29,46,55	29
2	FIK	B	403[A]	29/38	0.91	0.13	21,29,46,55	29
2	FIK	A	501[A]	32/38	0.92	0.14	12,22,39,47	32
4	PG4	B	401	13/13	0.94	0.13	23,25,35,38	0

The following is a graphical depiction of the model fit to experimental electron density of all instances of the Ligand of Interest. In addition, ligands with molecular weight > 250 and outliers as shown on the geometry validation Tables will also be included. Each fit is shown from different orientation to approximate a three-dimensional view.

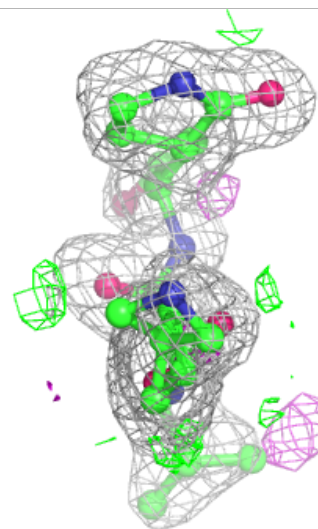
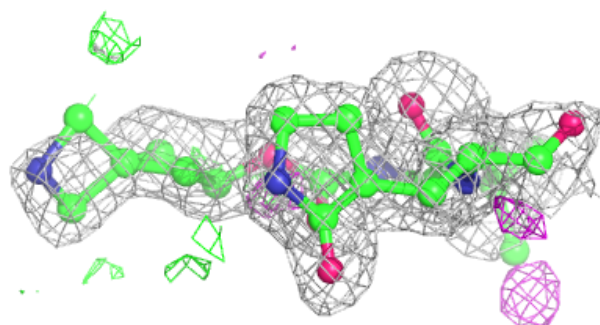
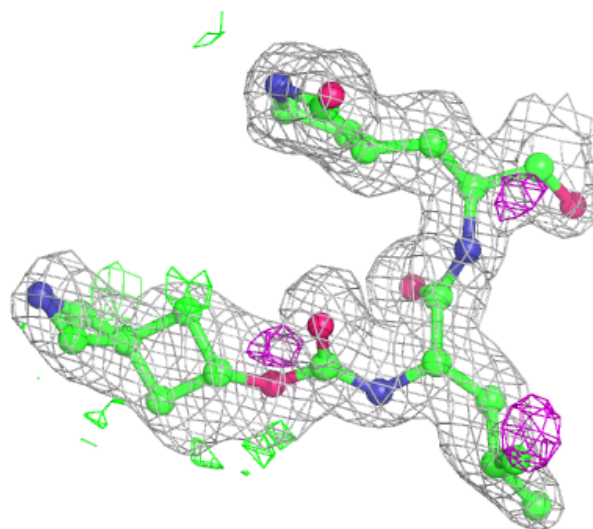
Electron density around FIW A 502 (B):

$2mF_o - DF_c$ (at 0.7 rmsd) in gray
 $mF_o - DF_c$ (at 3 rmsd) in purple (negative)
and green (positive)



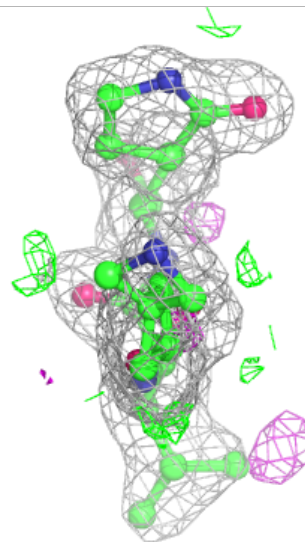
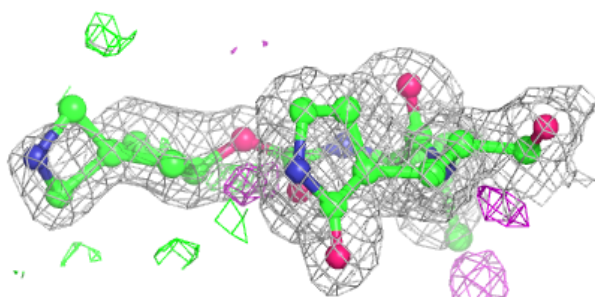
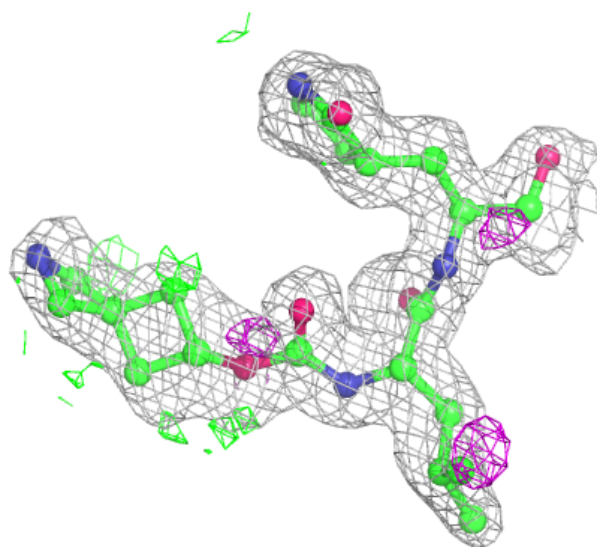
Electron density around FIW B 404 (B):

$2mF_o-DF_c$ (at 0.7 rmsd) in gray
 mF_o-DF_c (at 3 rmsd) in purple (negative)
and green (positive)



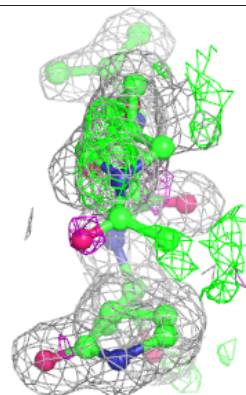
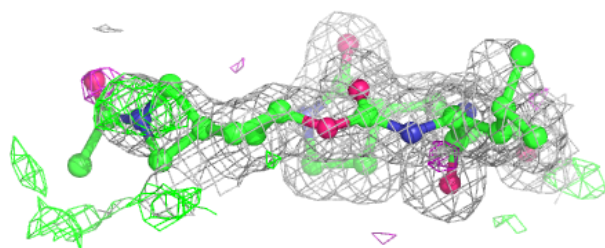
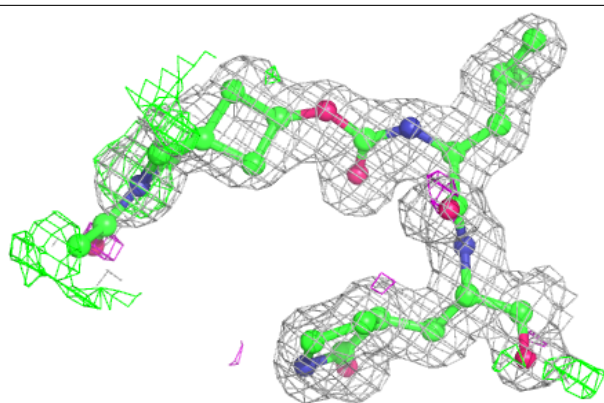
Electron density around FIK B 403 (A):

$2mF_o-DF_c$ (at 0.7 rmsd) in gray
 mF_o-DF_c (at 3 rmsd) in purple (negative)
and green (positive)



Electron density around FIK A 501 (A):

$2mF_o - DF_c$ (at 0.7 rmsd) in gray
 $mF_o - DF_c$ (at 3 rmsd) in purple (negative)
and green (positive)



6.5 Other polymers ⓘ

There are no such residues in this entry.